

## MECC

**Maximum capability, minimal logistical footprint.**

The MECC provides an enhanced working space for specialist capability without increasing the logistical footprint; it is C-130 air transportable and gives numerous options for the establishment of swift specialist capability with 7 ft 6 in (2.23 m) of internal headroom.

### SPECIFICATIONS

	PACKED MECC	DEPLOYED MECC
DIMENSIONS (mm) (in)	2438 mm (W) x 6096 mm (L) x 2438 mm (H) 96 in (W) x 240 in (L) x 96 in (H)	6400 mm (W) x 6096 mm (L) x 2438 mm (H) 253 in (W) x 240 in (L) x 96 in (H)
WORKSPACE AREA	-	420 ft <sup>2</sup> /39 m <sup>2</sup>
MAX GROSS WEIGHT	10,886 kg/24,000 lbs	-
TARE WEIGHT	3,856 kg/8,500 lbs	3,856 kg/8,500 lbs
MAX PAYLOAD	7,030 kg/15,500 lbs	-
PAYLOAD VOLUME	8.04 m <sup>3</sup> /290 ft <sup>3</sup>	-

### CAPABILITY

- Expands to triple work space from storage footprint.
- Secure transport & deployment of specialist capability without exposure to environment.
- 8 ft high transit footprint gives optimal logistical options for C-130, road, rail & sea.
- Fitted with integrated PLS/DROPS rails.
- Certified to 20 ft ISO container specifications.
- Robust steel or aluminium structure.
- Optional integrated ECU systems.
- Optional onboard 36 kVA generator set provides independent power supply.
- Internal headroom of 7 ft 6 in (2.23 m).
- Self-sufficient capability operational within minutes of deployment; no tools or power are required for deployment.
- Minimal maintenance facilitates through-life support.
- Fully insulated structure.
- Composite floor, door & interior furnishing.
- Simple & safe to transport & use.
- Stackable 9 high when stored/in transit.
- Compatible connections to enable complexing of extended FOB or operational headquarters.

Customized capabilities have included Command Posts, medical operating theatres & triage clinics, military vehicle & aircraft workshops, kitchens and ablutions.

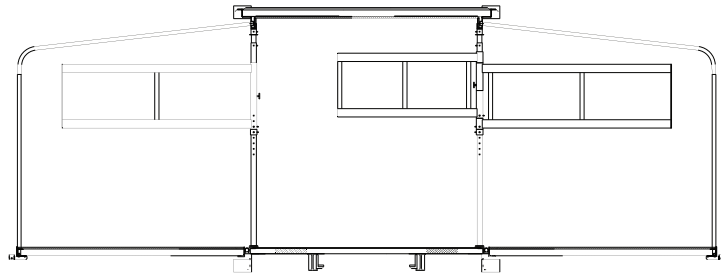
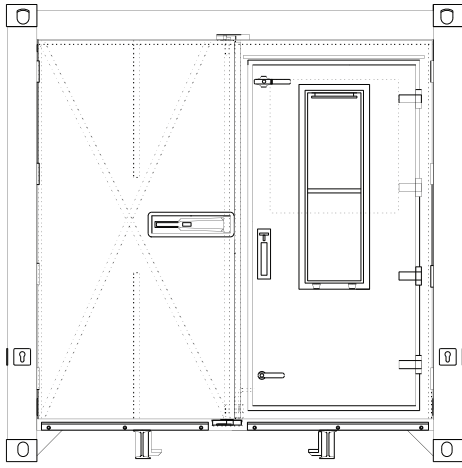


*The MECC showing its deployed & packed footprints.*

**Weatherhaven Global Solutions Ltd.**

Oakley's Yard Gatehouse Road Rotherwas Industrial Estate Hereford HR2 6LR UK  
[www.weatherhaven.co.uk](http://www.weatherhaven.co.uk) [info@weatherhaven.com](mailto:info@weatherhaven.com) +44 (0)1432 373000





*The design process for the MECC Operations Centre.*

**From requirement...  
...to development  
of a specialist  
capability.**



*The MECC Operations Centre deployed in Afghanistan alongside the EHMECC.*



*The MECC Operations Centre deployed, interior view.*

## A typical MECC Operations Centre

- Portable AVI capability with integrated fibre & CAT-5e patch panel relaying data to floor boxes & five 50 in monitors.
- 21 recessed floor boxes with power supply & fibre & CAT-5e capability.
- Integrated air conditioning units.
  - Ergonomically designed desks.
- Onboard 36 kVA generator power supply.
- Fully operational within 15 minutes of siting.

**...the  
complete  
solution.**



*A MECC being loaded into a C-130 (above) & a deployed MECC based Intensive Care Ward (right).*



**weatherhaven™**