

# TRECC-T

**Maximum capability, minimal logistical footprint.**

The TRECC-T provides an extremely mobile enhanced working space for specialist capability with a minimal logistical footprint.

## SPECIFICATIONS

	TRECC-T STOWED	TRECC-T DEPLOYED
External Dimensions (mm)	2134 W x 2260 L x 1448 H	4552 W x 2260 L x 2320 H
External Dimensions (in)	84.0 W x 89.0 L x 57.0 H	179.2 W x 89.0 L x 91.4 H
Workspace Floor Area	N/A	7.8 m <sup>2</sup> / 84 ft <sup>2</sup>
Max Gross Weight	2267 kg / 5,000 lbs	N/A
Tare Weight	907 kg / 2,000 lbs	2040 kg/4,500 lbs
Max Payload	1360 kg / 3,000 lbs	N/A

## CAPABILITY

- Trailer-mounted Tactical Redeployable Expanding Container Capability (TRECC-T).
- Agile and robust shelter operated directly from a NATO standard LTT-HC trailer.
- Deployed by 2 personnel in less than 5 minutes with no tools required.
- Expands to more than double the workspace from its stowed footprint.
- Secure transport and deployment of specialist capability without exposure to external environment.
- Fits onto a 463L pallet and transportable by air, road, rail or sea.
- Designed and tested for helicopter underslung transportation.
- Multiple self-sufficient capability options: command and control, forward medical facility, staff working environment, workshop.
- A full range of power options.
- Internal power distribution and optional HVAC.
- Deployed 2121 mm (83.5 in) internal headroom.
- Fully insulated, light-weight aluminium and composite structure with multi-layer fabric covers.
- Fully opaque blackout with both white and tactical green internal LED lighting.
- Designed to meet MIL-STD-810G climatic and environmental specifications and mechanical specifications for use over challenging terrain.



*The TRECC-T, stowed and deployed.*

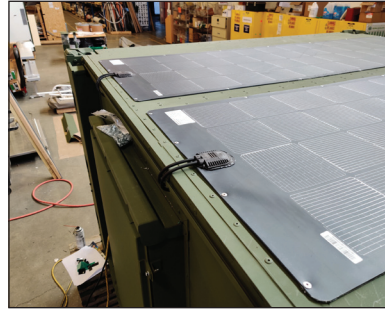
**Weatherhaven Global Solutions Ltd.**

Oakley's Yard Gatehouse Road Rotherwas Industrial Estate Hereford HR2 6LR UK  
[www.weatherhaven.co.uk](http://www.weatherhaven.co.uk) [info@weatherhaven.com](mailto:info@weatherhaven.com) +44 (0)1432 373000

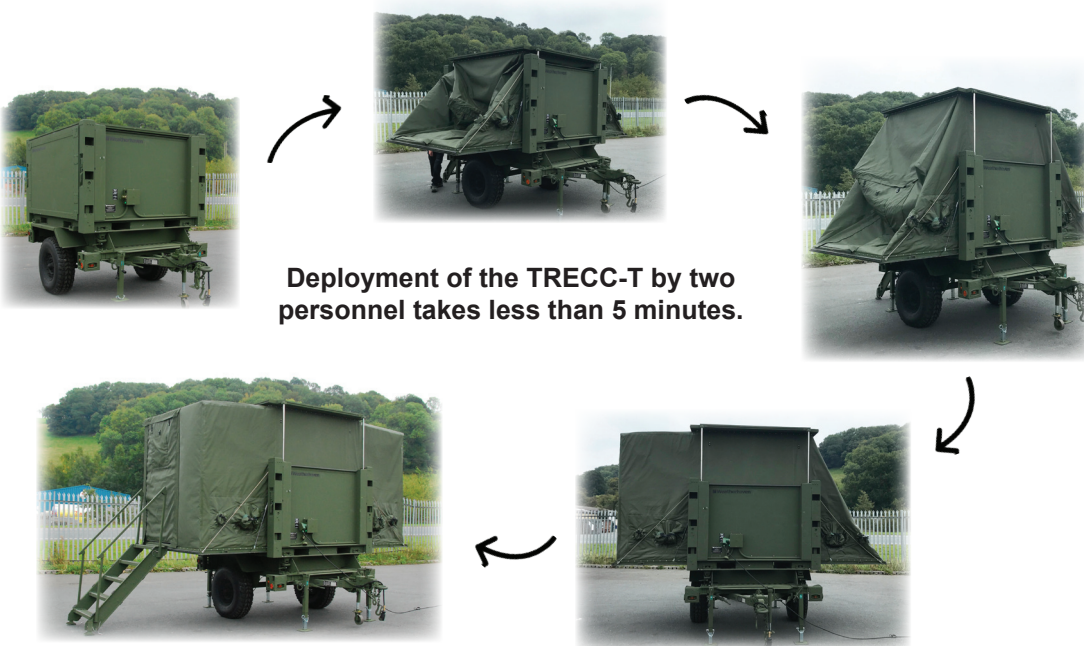
# From requirement...



Design for a TRECC-T medical clinic.

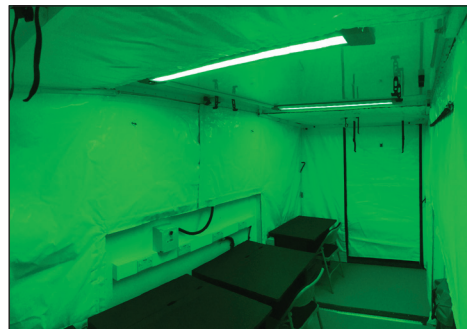


Hybrid power solutions for the TRECC-T.



Deployment of the TRECC-T by two personnel takes less than 5 minutes.

# ...to development of a specialist capability.



Logistically and operationally agile, the TRECC-T provides working space for at least four workspaces.



# ...the complete solution.

