



maastricht:

CITY OF HEALTH
& MATERIALS

Maastricht Region Destination Guide Exhibitions

City overview

Excellent Accessibility

Strong relation with the local government

Most European city of the Netherlands

MECC Maastricht, host of TEFAF, Stainless Steel and UTECH Europe

Diverse city

Strong conference community

Connect better / faster to Europe

Appealing destination for both Dutch and international visitors

Fantastic international exhibition and conference facilities

City of Health and Materials



“
*Maastricht is an historic,
dynamic city with countless
interesting sights and top
restaurants. It combines
the good life with an
international outlook.*”

Welcome to our international city!

Dear organizer,

As Mayor of Maastricht it is my pleasure to welcome your exhibition to our beautiful city of Maastricht. Maastricht is an international city, and this is obvious in a number of ways. Many Dutch visitors have said that coming to Maastricht feels like going abroad. We take that as a compliment. We are proud of the Dutch culture, and throughout history we also have enjoyed the positive effect combining different cultures has had on the city. For centuries Maastricht has been influenced by its bordering countries Belgium and Germany.

You can hear this international character on the streets. In addition to the sing-song Maastricht dialect (and of course Dutch), you will hear languages from all over the globe. Many are tourists, but most are people who work, study and live here.

With a multitude of international organizations and educational institutes (such as Maastricht University, Zuyd University of Applied Sciences, Maastricht School of Management, and United World College) we welcome talented people from all over the world.

Maastricht is a dynamic, historic city which is easy to get around in. It offers countless historical landmarks, many and diverse shopping opportunities and renowned gastronomic experiences. People have really mastered the art of enjoying life here. Maastricht hosts major international events such as The European Fine Art Fair (TEFAF), The Stainless Steel World Conference, UTECH Europe, André Rieu concerts, Jumping Indoor Maastricht and many international conferences.

As an international exhibition and conference destination, Maastricht is favored by many organizers and delegates because of its excellent exhibition climate. The city is compact, which means a higher density of networking during the exhibition evenings. Because almost everything in Maastricht is within walking distance, the city starts on the doorstep of your hotel. In

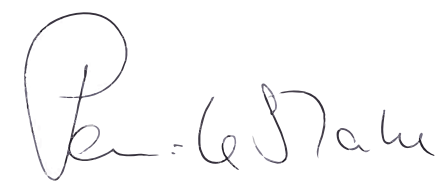
the historical city center there are over 2,100 hotel rooms within a short distance from the MECC exhibition and conference centre. Maastricht actually offers more than 5,000 hotel rooms when we take the whole region into account, all of which are connected to the city center. In terms of accessibility, Maastricht is very centrally located in Europe and has eight international airports within a one-hour drive. The MECC exhibition and conference centre has excellent and all the necessary facilities for organizing a successful conference.

Maastricht is working on its future. Academic Hospital Maastricht and Maastricht University work in close cooperation with Brightlands Maastricht Health Campus. This campus oversees the entire process involved in the development of innovations in the fields of health and life sciences (valorisation) and has numerous international connections. In combination with Brightlands Chemelot Campus, just a few kilometers north of Maastricht, this makes the city's economy even stronger.

Brightlands Chemelot Campus focuses on the development of smart materials and sustainable chemical production processes ensuring accelerated business growth through the open exchange of ideas. Together the two campuses are an economic engine for the Maastricht Region.

So, as you can see, we are the best location for your exhibition or conference and we are looking forward to welcoming you and your delegates to Maastricht!

Sincerely,



Annemarie Penn-te Strake
Mayor of Maastricht

42,450

companies
in Maastricht
Region



The most international
university in the Netherlands

50%

international students
at Maastricht University



Strongest brain scanner in
the world is in Maastricht



50

medical technology
companies

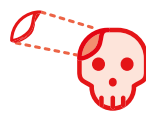


Made in Maastricht Region

The first
hamburger created
in a laboratory



First 3D-printed
skull implant



DYNEEMA
world's strongest fibre -
fifteen times stronger
than steel



€116,000

Maastricht
Region

€82,000

NL



Labour productivity

Brightlands campuses



Chemelot
campus



Maastricht Health
campus



Smart Services
campus



Greenport Venlo
campus

South-eastern Netherlands / Brainport 2020



35%
export NL



45%
R&D turnover in NL

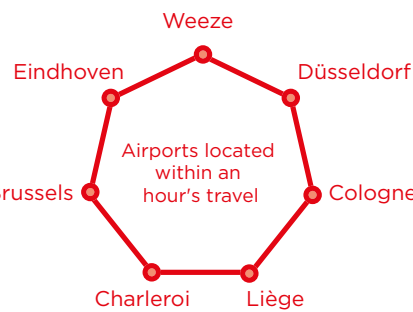


55%
of Dutch patents

Maastricht Aachen Airport



TGV stations in Liège and Aachen



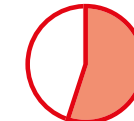
Jobs within an hour's travel

Maastricht Region + Euregion
2.2 million



Amsterdam region
1.7 million

60%



of companies in
Maastricht Region trade
internationally

United Nations University



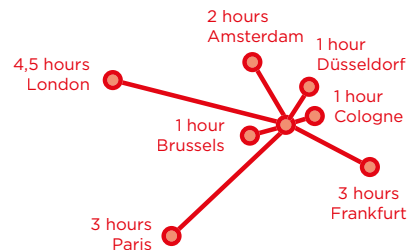
Maastricht Economics and
Social Research Institute on
Innovation and Technology

Four native languages



* The dialect is understood from
Cologne to Luxembourg.

Train journey times from Maastricht Region



RWTH Aachen University
40,000 Students one of the largest
technical universities in Europe



Graduating academic
engineers (annually)



3 Academic hospitals



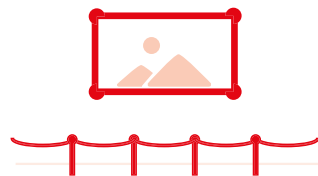
Aachen, Liège, Maastricht

Logistical connections

Connections via road, water,
railway, air, and pipelines



TEFAF
largest art fair in the world



The most musical province in
the Netherlands



27% of all Dutch musical societies
come from Limburg province.

The second monument city
of the Netherlands



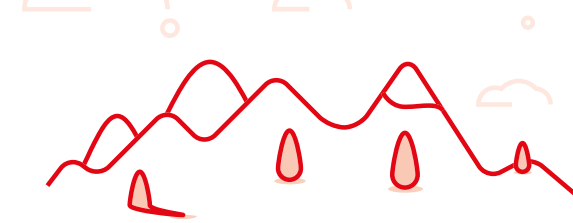
Maastricht ranks only behind Amsterdam in the
number of monuments to be seen in the city

The world's best
tourist destination.



Parkstad #1 according to the
World Travel & Tourism Council.

Heuvelland - Ardennes - Eifel



Maastricht Treaty
establishment of the EU



Founder of Europe



Charlemagne

Foundation of the euro



Pinkpop



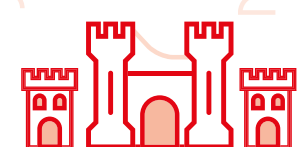
Pinkpop is the largest music
festival in the Netherlands

The most beautiful bookstore
in the world



Dominicanen Maastricht

90 castles and country estates



the largest concentration
of castles in the Netherlands



Table of content

| | | |
|--|---|--|
| <div>1</div> <div>Venue</div> <div>Introduction MECC Maastricht Multifunctional and compact venue</div> <div>page 10 - 15</div> | <div>2</div> <div>Destination</div> <div>Why Maastricht? Brightlands Knowledge crossing borders Knowledge city, knowledge region Maastricht exhibition and conference destination at a Glance</div> <div>page 16 - 27</div> | <div>3</div> <div>Accessibility</div> <div>Easy travelling By plane Shuttle service By train By car Visa</div> <div>page 28 - 33</div> |
| <div>4</div> <div>The city of Maastricht</div> <div>Cheers to the good life Hotel capacity Ideas for social venues</div> <div>page 34 - 39</div> | <div>5</div> <div>Exhibitions we are proud of</div> <div>TEFAF UTECH Europe</div> <div>page 40 - 43</div> | |
| <div>ANNEX 1 Overview and floor plans</div> <div>ANNEX 2 Hotel overview</div> <div>ANNEX 3 Accessibility</div> | | |

1 Venue



Introduction MECC Maastricht

As an international exhibition and conference destination, Maastricht is favoured by many organizers and delegates because of its excellent exhibition and conference climate. Even though we already host wonderful exhibitions every year, it became about time to transform MECC Maastricht again in a state of the art venue further suiting both the city of Maastricht as well as our exclusive visitors.

MECC Maastricht is on the threshold of a major renovation of the exhibition and conference centre. In the next few years, nearly 30 million Euros will be invested in a renovation that will give a substantial boost to the quality the MECC offers. Not only will the venue itself be more attractive and functional, the complex will also fit in better with the local development of the Maastricht area.

The most noticeable change will be the glass shell around the existing auditorium, the epicentre of MECC Maastricht. Not only will this be an eye-catcher in terms of appearance, but it will also offer the opportunity to literally lighten up the exhibition and conference centre and make

it more transparent, thanks to the addition of open spaces and spyholes. There will be not only top facilities, but a qualitative stay due to the daylight, wonderful culture and a pleasant periphery with beautiful hotels, restaurants and catering facilities.

The exhibition and conference centre will have a more open structure, making it easier to visitors to stay in contact. Another advantage is that the reconstruction offers congress and exhibitions delegates the opportunity to meet one another in a wonderful setting



FAST FACTS

- 🕒 Nearly 30 million Euros will be invested in a renovation
- 🕒 Goal is to become a meeting place for people working in offices in the area.
- 🕒 The Expo Foyer will be enlarged.
- 🕒 The Forum Passage will be adapted to include multi-functional rooms.
- 🕒 The new exhibition and conference centre opens in 2020.
- 🕒 Exhibition organizers are at MECC Maastricht part of our team.



due to beautiful terraces and at the same time connect with thousands of people working in offices in the neighbouring areas.

The interior will be getting a complete facelift. Many new rooms and spaces will be added and adapted to include multi-functional rooms. Not only will the new MECC offer more space for conference participants, the redesigned layout will also make it possible for two or three conferences to be held simultaneously.

The architectural firm Cepezed has created the design for this plan. The new exhibition and conference centre is expected to open in late 2020.

MECC Maastricht can only do this with a dedicated team at place. We work hard for the success of our clients who soon in the process become our partners. We understand that we can create successful shows only when we work as a team. Exhibition organizers are at MECC Maastricht part of our team. We are proud of every show and eager to raise the bar every time we think we can improve.



“
*MECC Maastricht can only do this
with a dedicated team at place.*”

Rob van de Wiel, Managing Director
MECC Maastricht

Multifunctional and compact venue

As a multifunctional and compact venue, MECC Maastricht has 30 years of experience in hosting corporate meetings, extraordinary events, large conferences and exhibitions in a climate where service and quality are the keywords. From start to finish, MECC Maastricht is determined to make each event a great success. To guarantee that success to your event, a dedicated team will be assigned to make sure the organization will be flawless. From our culinary team to the technicians, everyone has high quality service as a standard.

Multifunctional venue

MECC Maastricht consist of four halls, whose total floor space covers nearly 30,000 square meters and two exhibition and conference centres of which one, the Euro Centre, is specially designed for more intimate conferences, meetings and events. The halls as well as most of the multi-functional meeting rooms, can be used separately or in combination with one another. All meeting rooms and halls are within a walking distance of approximately 1,5 minute.

Exhibition and conference centre

The exhibition and conference centre consists of three flexible and multi-functional floors. All the floors are interconnected, allowing guests to see each other. It has a very compact and open character which creates a cozy atmosphere and encourages networking during a conference, meeting of event. This part of the building can host up to 5,000 delegates.

The exhibition and congress center can be reached via the Trajectum (1-level). This level accommodates both of the auditoria from which you have direct access to the Expo Foyer, making this floor ideal for combining an exhibition and congress with a trade fair. One special feature of the auditoriums is that they can be used both separately and in combination with one another. Both auditoriums offer interpreter booths. The Expo Foyer is perfect for an exhibition or a dinner party in a fine atmosphere.





The o-level benefits from a large number of meeting rooms, each perfectly suitable for meeting sessions combined with a seminar or workshop. Some of the meeting rooms are also equipped with interpreter booths which may be used as an extra service for your international guests.

The second floor of the exhibition and congress center, the Promenade, accommodates thirteen meeting rooms of various sizes. All the rooms on the second floor have natural day light.

Please check Annex 1 for an overview.

“
MECC Maastricht allowed a perfect environment for education and networking for the 1450 ESRA participants.”

Florian Locatelli, CEO ESRA

Euro Centre, for intimate conferences

The compactness and intimate atmosphere of MECC Maastricht is also noticeable in the Euro Centre. The Millennium Foyer leads to four multi-functional meeting rooms, which can be used separately or in combination with one another. All have natural light, although they can be darkened if necessary. Since it has its own toilet and kitchen facilities, as well as room for setting up a secretarial office, the Euro Centre is ideal for exhibitions and congresses where discretion and exclusivity are of the essence.

Partners of MECC

Through intensive collaboration with Brightlands, Maastricht University Medical Centre (MUMC+), Maastricht University and the Maastricht Convention Bureau, MECC Maastricht is leading in more days, international exhibitions and congresses.

MECC Hotel Services

MECC Hotel Services (MHS) is part of MECC Maastricht and can serve as the official housing partner for your conference. MHS is the strategic partner that offers proactive assistance to make it all easier for you when it comes to booking accommodation. MHS can also help you arrange the right transportation and assist with all the other factors contributing to the success of your conference.



MECC Catering Services

MECC Maastricht works with three catering partners that offer a broad range of products including regional products and innovative food concepts. They offer high-quality catering services in a variety of price categories. A personal in-house catering manager is ready to assist you in making the right choice.

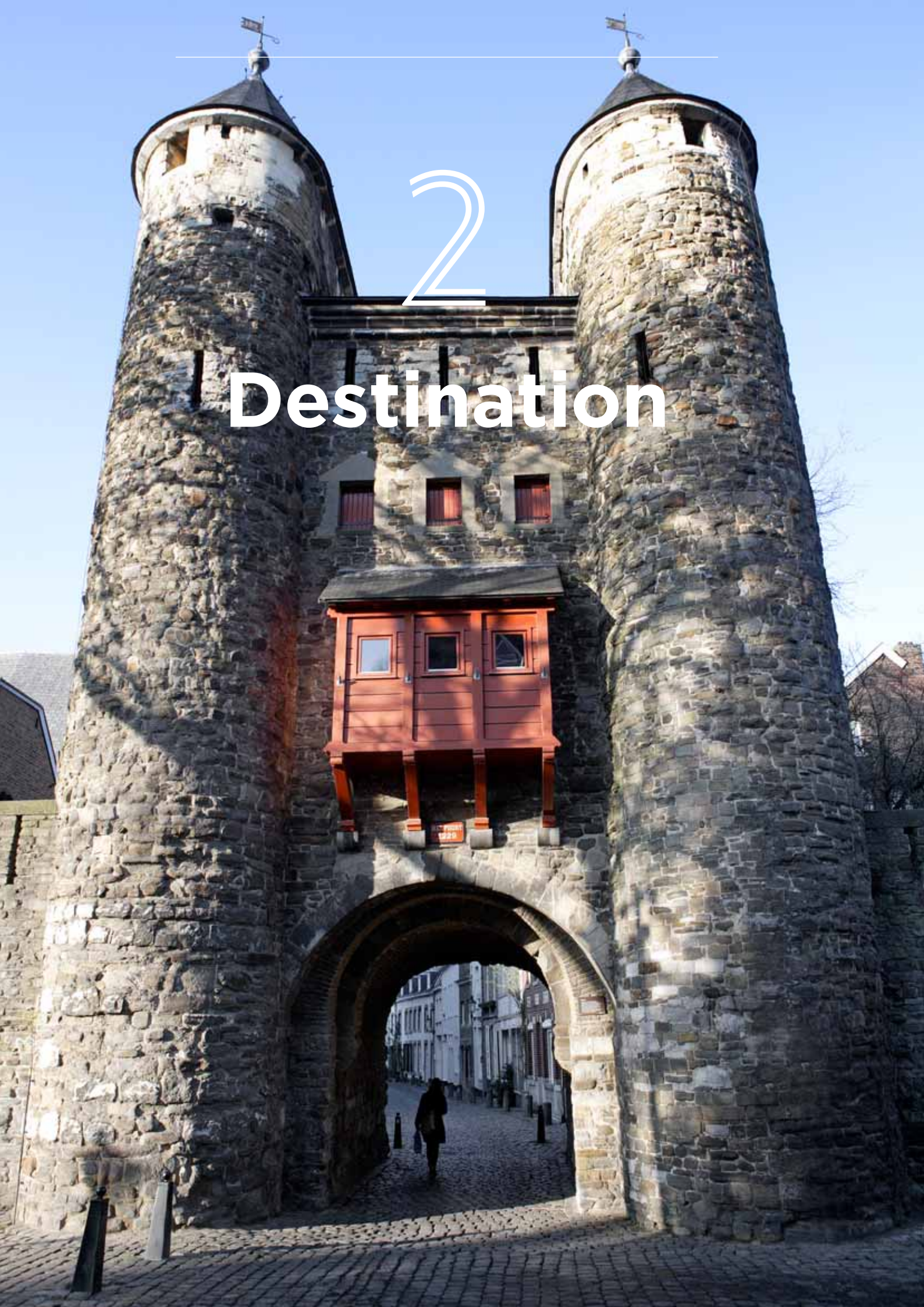
MECC Exhibitor Services

MECC Exhibitor Services (ES) supports exhibitors in their preparations for an event. As part of MECC, ES guarantees the best, fastest and most efficient service for your customers. Let ES handle these activities, so you can focus on organizing your congress and/or exhibition.



FAST FACTS

- 🕒 30 years of experience.
- 📏 Floor space covers 30,000 square meters.
- 👥 Can host up to 5,000 delegates.
- 🏠 Large number of meeting rooms (break-out rooms).
- 🏆 Best Dutch conference venue (Meeting Awards).



Why Maastricht?

Maastricht is an ideal place to organize an exhibition. It's a compact city, and thanks to its central location in Europe it is short trip away no matter how you get here. The city has eight airports nearby and good national and international train connections. Maastricht has a very large exhibition and conference centre, a great number of hotel rooms and most importantly, the talents, skills and experience to receive international groups.

Most European city of the Netherlands

Maastricht is internationally oriented, and is home to many international institutes, a teaching hospital, and a university. Thanks to the Brightlands Campuses in this region, the city is an excellent location for meetings on health, materials, data, and food. There are locations that can meet every need, from exhibition center to hotels both elegant and eclectic, to exclusive and unique locations like caves and châteaux. The many squares, bars, restaurants, café terraces, the gastronomic atmosphere, and hospitality also make Maastricht a delightful place to tarry after your business event.

City of Health and Materials

Maastricht as city of life science and (bio) materials is represented by two Brightlands campuses, Brightlands Maastricht Health Campus and Brightlands Chemelot Campus, strongly supported by Maastricht University Medical Centre (MUMC+) and with Maastricht University as academic partner. Maastricht is one of the top ten locations in Europe for medical health science valorization.



“

Locals were super helpful, I didn't experience any language barrier and there was always someone I could ask for help.”

Tereza Zvolská, Membership Manager
of the European Evaluation Society (EES)



Strong Exhibition Community

Everything is within walking distance such as exhibition venues, hotels and the city center. Most likely all delegates will stay in Maastricht during the whole exhibition period. There are ideal network possibilities due to the fact that delegates can easily interact in the evening. The entire city will embrace the exhibition (restaurants, hotels, bars and inhabitants).

Connect better to Europe

You can connect better to Europe due to Maastricht's central location in Europe and short distance to Belgium (5 kilometers) and Germany (20 kilometers). Several European capital cities are just a stone's throw away, such as Brussels (1 hour), Amsterdam (2 hours), Paris (3 hours), London (3 hours). You have direct access to European markets (Belgium, Germany, France, UK) and possible co-operation with several universities within a 100 km range.

Excellent Accessibility

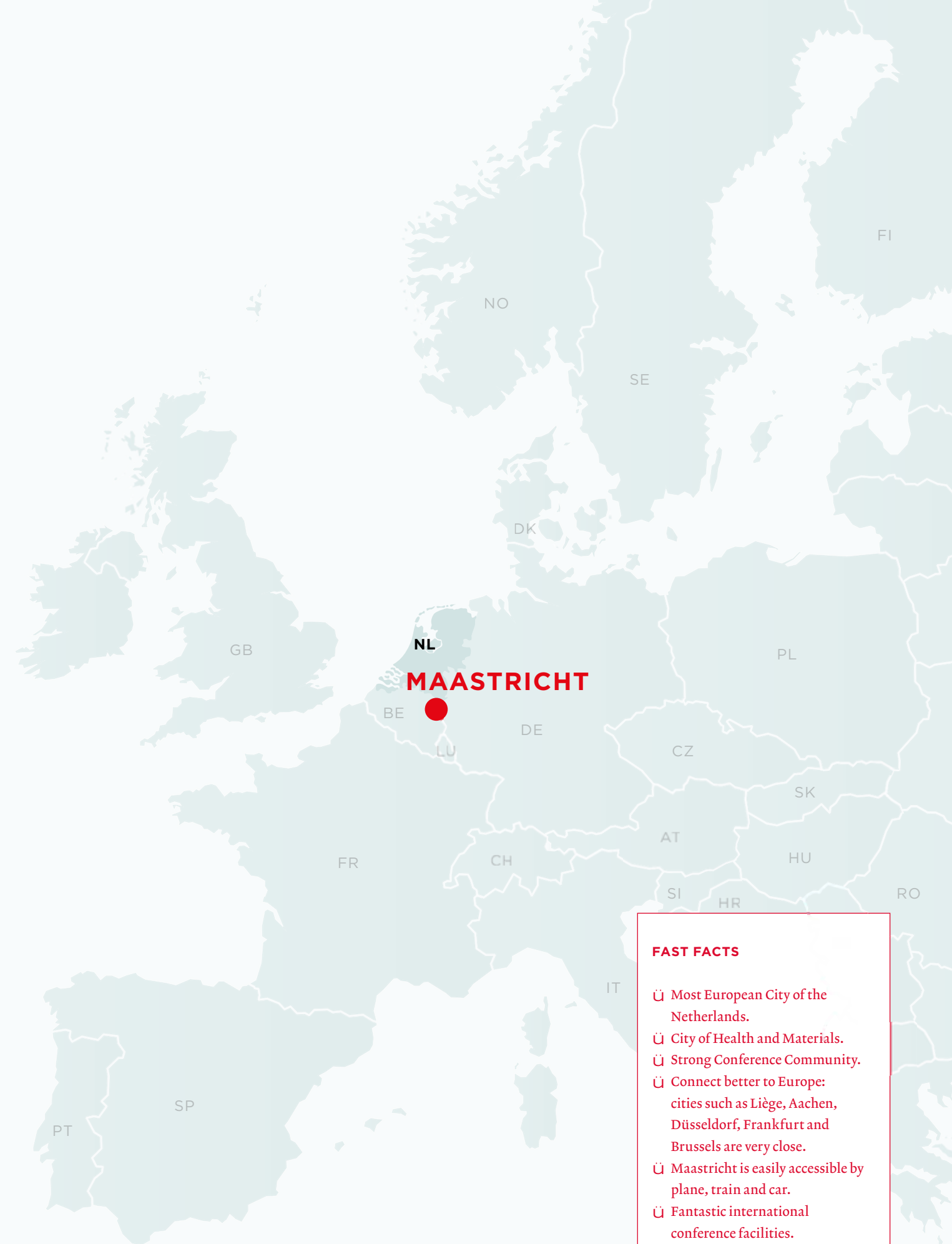
There are eight international airports surrounding Maastricht (up to one hour drive), amongst them there are two main exhibition hubs, Brussels Zaventem and Düsseldorf Airport. Maastricht can provide shuttle services from the airports to the city both logistically and financially. The city is easily accessible by car from the Netherlands, Belgium and Germany via the A2 and A79 highway. There's also a well-connected public transport system (train station in the middle of the city center and a train station at two minutes walking distance from the venue MECC Maastricht). If you travel by badge you can travel free with public bus transport within Maastricht.

Fantastic international Exhibition and conference facilities

MECC Maastricht as compact exhibition and conference venue can provide the perfect configuration for your show. MECC facilitates the organization in event marketing, hotel service, transport, AV, catering, exhibitor services and more.

Strong relation with the local government

Both the city of Maastricht and the Province of Limburg are well disposed towards international exhibitions and conferences.



FAST FACTS

- 📍 Most European City of the Netherlands.
- 📍 City of Health and Materials.
- 📍 Strong Conference Community.
- 📍 Connect better to Europe: cities such as Liège, Aachen, Düsseldorf, Frankfurt and Brussels are very close.
- 📍 Maastricht is easily accessible by plane, train and car.
- 📍 Fantastic international conference facilities.
- 📍 Strong relation with local government.



Brightlands

Knowledge crossing borders

The strength of the Maastricht Region is defined by the combination of the innovative economy, its international position, and inspiring living environment. It is a melting pot of research, education and entrepreneurship formed by four rapidly growing Brightlands campuses.

What is Brightlands

Brightlands is an ambitious community for open innovation in health and sustainability. At the four rapidly growing Brightlands campuses, researchers, entrepreneurs, investors and students develop new solutions in the fields of materials, health, food and smart services. They find what they need here for their personal and professional development: trendsetting know-how, unique R&D technology, continuous learning pathways, active valorisation and an international atmosphere.

Brightlands is located at the heart of the Eindhoven-Aachen-Leuven cross-border technology triangle.

At Brightlands, co-creation in open knowledge networks is a central theme. The four campuses work closely together, and offer state-of-the-art facilities for fundamental and applied research. The expertise available at the campuses dovetails with the existing developmental capacity in the regional business environment and specific knowledge at universities and higher secondary educational institutions. The campuses work across scientific, geographical and organizational borders to derive the optimal benefits of one another's fields of expertise.

Brightlands is the result of intensive triple-helix partnerships between government, knowledge institutes and entrepreneurs.



“

Brightlands creates synergies between different areas of expertise in the region. This is where researchers and entrepreneurs join forces to tackle global challenges in materials, health, smart services, and food.”

Bert Kip, CEO Brightlands Chemelot Campus

The four Brightlands campuses

- Brightlands Maastricht Health Campus: focus on regenerative medicine, precision medicine and innovative diagnostics.
Location: Maastricht
- Brightlands Chemelot Campus: focus on sustainable manufacturing and smart materials.
Location: Sittard-Geleen
- Brightlands Smart Services Campus: focus on data science and smart services.
Location: Heerlen
- Brightlands Campus Greenport Venlo: focus on healthy food and nutrition.
Location: Venlo

Brightlands ecosystem

Working within the Brightlands ecosystem means being part of an inspiring open innovation community. It is a community closely connected to the network of the eight national top science and innovation parks, and is also part of Health Axis Europe, an alliance between the leading medical clusters, Leuven, Heidelberg, Copenhagen and Brightlands.

Visit Brightlands

Brightlands is always looking to expand relationships and exchange knowledge and ideas, as exhibition and congress organizers and delegates do. You are more than welcome at the campuses for company visits and networking moments during your conference. The Maastricht Convention Bureau can arrange this for you.

Brightlands Campus Greenport Venlo

Healthy food and nutrition

| | |
|------------------|-----|
| <u>Companies</u> | 17 |
| <u>Jobs</u> | 300 |
| <u>Students</u> | 830 |

Brightlands Smart Services Campus

Data research, smart services

| | |
|------------------|-----|
| <u>Companies</u> | 35 |
| <u>Jobs</u> | 250 |
| <u>Students</u> | 75 |

Brightlands Chemelot Campus

Smart materials and sustainable manufacturing

| | |
|------------------|-------|
| <u>Companies</u> | 77 |
| <u>Jobs</u> | 1,900 |
| <u>Students</u> | 660 |

Brightlands Maastricht Health Campus

Precision medicine Regenerative medicine Innovative Diagnostics

| | |
|------------------|-------|
| <u>Companies</u> | 73 |
| <u>Jobs</u> | 9,200 |
| <u>Students</u> | 6,600 |

Knowledge city, knowledge region

Maastricht is a top location for high-quality knowledge technology, with a strong economy, ample employment, and a pleasant living environment. High-quality, internationally-oriented education is one of the requirements for achieving the goal of being an innovative city.

International student city

Maastricht is a vibrant international student city. Over 10% of its residents are students, almost half of whom are from outside the country. This international ambience is very much in line with the character and location of Maastricht in the heart of the Euregion Meuse-Rhine. University students are an inseparable part of Maastricht life. In recent years, the city has grown into a thriving international university city. Students are part of what makes Maastricht so colorful, dynamic, and international.

Maastricht University

Maastricht University (UM) is the most international university in the Netherlands and, with more than 16,000 students and 4,000 employees, is still growing. The university stands out for its innovative education model, international character and multidisciplinary approach to research and education.

Thanks to its high-quality research and study programs as well as a strong focus on social engagement, UM has quickly built up a solid reputation. Today it is considered one of the best young universities in the world.

The 6 faculties of the Maastricht University are:

1. Faculty of Arts and Social Sciences
2. Faculty of Health, Medicine and Life Sciences
3. Faculty of Humanities and Sciences
4. Faculty of Law
5. Faculty of Psychology and Neuroscience
6. School of Business and Economics

REASONS TO CHOOSE FOR MAASTRICHT AND REGION

- 📍 Life Science and (bio)materials represented by two R&D Campuses; Brightlands Maastricht Health Campus and Brightlands Chemelot Campus.
- 📍 Maastricht University as academic partner (6th best young university in the world).
- 📍 Strongly supported by Maastricht University Medical Centre – Maastricht UMC+.
- 📍 1 of the top 10 locations in Europe for medical and health science valorisation.
- 📍 5 medical and health care related spin-offs per year, on average.
- 📍 8,050 people currently work at Brightlands Campuses.
- 📍 90 companies are based at the Brightlands Campuses.
- 📍 DSM, Sabic, Lanxess, Sappi, BioMedBooster are amongst these companies.



Anchored in the Eu(region)

As internationally oriented as UM may be, it also places great value on its strong connection with Limburg and the Euregion. The university nurtures partnerships with many regional companies, knowledge institutes and government agencies. Together, they play a leading role in the sustainable economic development of the region.

In this context, UM and its partners have entered into an ambitious strategic program. This program will see the existing and Brightlands campuses merged into a single, international knowledge center specializing in the areas of bio-materials and innovative healthcare. The campuses serve as flywheels to attract knowledge workers, keep the population vital and fuel the growth engine of the Limburg economy.

“

The Brightlands Campuses, major companies, innovative enterprises and start-ups as well as the strong link between education and the labor market form the ecosystem of the Maastricht Region knowledge economy. All this is situated in a historic environment with countless interesting sights, charming hotels and top restaurants.”

Annemarie Penn-te Strake
Mayor of Maastricht

Studying in Maastricht

Studying here means choosing from an incredible variety of programs, from the 86 bachelor's and master's programs at Maastricht University, to Zuyd University of Applied Sciences, with no fewer than four faculties of the arts: the Maastricht Academy of Fine Arts and Design, the Academy of Architecture, the Academy of Music, and the Theatre Academy.

It also means the chance to take one of the international programs offered by institutions like Maastricht School of Management (The Netherlands' biggest international business school), the European Institute of Public Administration (a training center for European issues), or the European Journalism Centre (a teaching institute for journalists and media professionals).



Maastricht UMC+

The Maastricht University Medical Centre + (Maastricht UMC+) is the name under which the academic hospital Maastricht and the Faculty of Health, Medicine and Life Sciences of the Maastricht University cooperate. They provide a complete offer of excellent care: a broad offer of basic care, top clinical and advanced specialized care, always with the integration of research and education from the faculty.

Their aim is health recovery, health preservation and health promotion. This means that they do not only want to cure people once they are ill, but rather keep them healthy for as long as possible and prevent they need care. So they mainly focus on prevention (preventing diseases) and by doing so, they distinguish themselves internationally from other university medical centers. This is why they have the “+” in their name and their motto is Healthy living.



FAST FACTS

- 📌 The youngest and most international university in the Netherlands.
- 📌 16,500 students, 4,000 staff, 55,000 alumni.
- 📌 One of the best young universities in the world (THE, QS).
- 📌 The only Dutch university in the Worldwide Universities Network.
- 📌 86 different degree programs.
- 📌 More than 10% of residents of Maastricht are students.
- 📌 Approximately 50% come from abroad.
- 📌 More than 50 student and academic associations and independent societies for Dutch and international students are active in Maastricht.
- 📌 Maastricht UMC+:
7,593 employees (= 5,920 FTEs)
4,685 students enrolled in all
1,713 new students (884 Bachelor's and 829 Master's)
213 dissertations
2,350 scientific publications
73 on-campus companies.
- 📌 Most international university of the Netherlands and 14th worldwide.

Maastricht exhibition and conference destination at a glance

Population

Maastricht 122,000
Maastricht Region 604,000

Companies

42,450 in the Maastricht Region.
60% of the companies in the region operate on an international level

Brightlands

An ambitious community for open innovation in health and sustainability. At the four Brightlands campuses, researchers, entrepreneurs, investors and students develop new solutions in the fields of materials, health, food and smart services.

3 academic hospitals
Maastricht, Aachen, Liège

Maastricht University

Most international university of the Netherlands and 14th worldwide (Times Higher Education - 2016)

Nationalities

Over 150 in Maastricht

Hotel rooms

Over 5,000 in the region

Wining and dining

170 restaurants in Maastricht
244 bars and cafés in Maastricht
400 seats in one dining room

Tourists (Maastricht)

Second tourist destination and Best City Trip of the Netherlands 2016 and 2017

Break-out rooms
32 in one venue

MECC Maastricht

Exhibition space
30,000 square meters in one venue

Theatre facilities
1,650 seats in two combined multi-functional auditoriums with a stage in the middle

3 Accessibility



Easy travelling

Maastricht is very internationally-oriented, in many respects- not only in terms of locals' language ability, but also in the extensive road network, the eight nearby airports, and the excellent train connections.



By plane

Because of Maastricht's central location, it is actually most convenient to fly to Belgium or Germany when travelling to Maastricht. Brussels Zaventem Airport is Belgium's main airport and is situated only 100 kilometers from Maastricht. It has a wide variety of both European and intercontinental flights and airlines. Düsseldorf International Airport in Germany is located approximately 110 kilometers from Maastricht and also offers a wide variety of European and Intercontinental flights.

Official carrier

The Maastricht Region has a unique partnership with Brussels Airlines. The Brussels Airlines' Official Carrier Program is designed to meet the needs of organizers and delegates of international conventions held in Maastricht.

Warm welcome

The Maastricht Convention Bureau can arrange a warm welcome team and shuttle services at the airport, so your congress delegates will be able to easily and comfortably find their way to the exhibition or conference. A welcome desk behind the baggage claim will be manned by one professional hostess who will provide necessary travel information.

Low-cost carriers

Maastricht is even perfectly accessible budget-wise via the six low cost carrier airports, all within one hour travel.

Please check Annex 3 for an overview.

“

*As an airline, we offer contracts with interesting rates.
We already work with various Belgian convention centers.
The cooperation with the MECC Maastricht is absolutely an added value.”*

Kathleen Vandenbroecke, Key Account Manager MICE
at Brussels Airlines

FAST FACTS

- ✎ Two stop strategy.
- ✎ 8 international airports within one hour travel.
- ✎ Substantial discount for the organizer, delegates, and accompanying partner flying to your congress.
- ✎ Simplification of the management of air travel related to conferences.
- ✎ Delegates can book their own tickets.
- ✎ Excellent international and national train connections.
- ✎ Easily accessible by car.



“
We are very satisfied with the performance and services
provided by Jacobs Travel. They meet and very often exceed all
U.S. Department of Defense contractual requirements.
We would gladly recommend using their services.”

Marc S. Payne, GFS-9, Transportation Operations Specialist,
COR. U.S. Department of Defense



Shuttle service

To complete the accessibility
from the airport terminal to the
doorstep of your hotel, reliable
shuttle services can be provided
upon request. Depending on the
arrivals of the delegates, minivans,
taxi, VIP vehicles and buses are
available to use as a shuttle. You
can depend on their experienced,
qualified and professional drivers
for safe transportation. Jacobs Travel
arranges shuttle services according
to your wishes, and at a reduced rate.

Coordination

Jacobs Travel is specialized
in planning and organizing
transportation for conventions
and trade shows. Their team works
with the latest transportation
management technology to make
sure they can meet your personal
needs. Jacobs Travel will handle the
entire transportation management
process, so that you can devote
your valuable time to other critical
aspects of your congress.

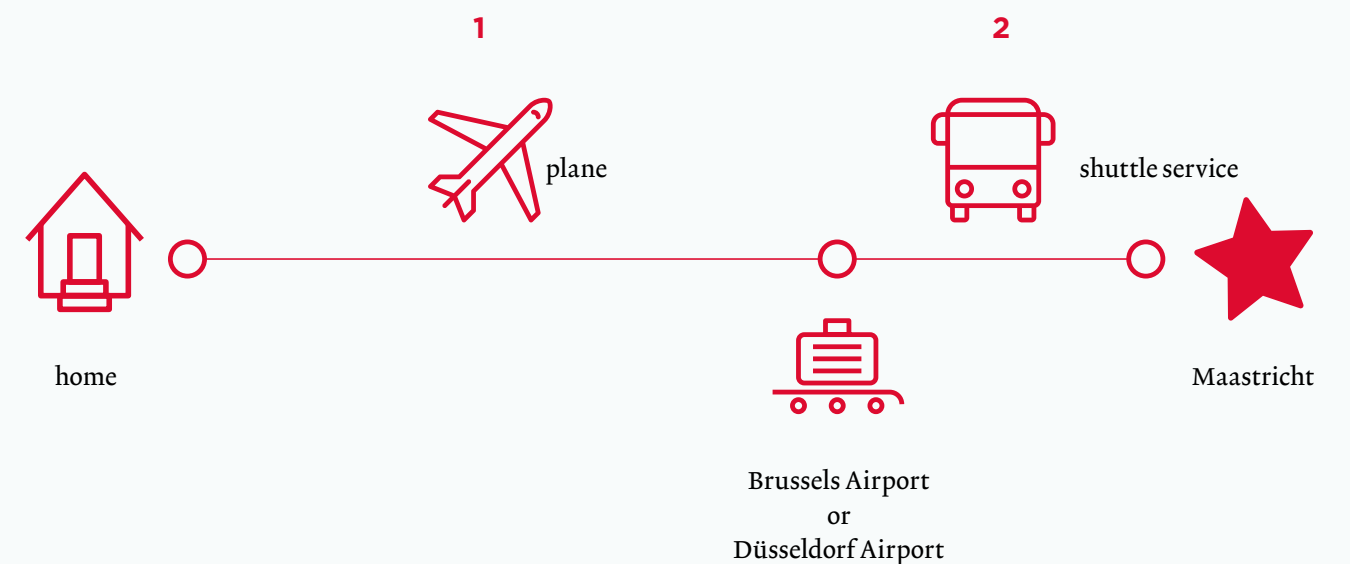
Coordinators lead the complete
transportation to and from your
location, from their office or on
the spot. Their coordinators are
able to immediately anticipate any
situations that may arise. Prior
to the event they will develop a
complete transportation plan in
cooperation with you.

Clear communication

To make sure that the transportation
is properly managed at all times,
Jacobs Travel offers different ways
to optimize communication, such
as client or destination notification
cards in the bus, advertising on the
outside of the bus, people to direct
traffic and signs along the way.



Two stop strategy





By train

Maastricht has excellent national and international train connections. There is an Intercity train connection to Eindhoven, Utrecht and Amsterdam every 30 minutes. There are also frequent connections to Liège (Belgium), Brussels (Belgium) and Aachen (Germany) where you can transfer to international trains – Thalys, TGV, Eurostar – to London, Paris and other European cities. Maastricht has three railway stations: Maastricht Central, Maastricht North and Maastricht Randwyck. From Central Station, you can walk directly into the city center where many hotels are located. Maastricht North gives you direct access to the city’s suburbs. Randwyck Station is located only 250 meters from the MECC Exhibition and Conference Centre. The Academic Hospital (MUMC+), Brightlands Maastricht Health Campus, Maastricht University, Maastricht School of Management and many hotels are also situated in the Randwyck station area.



By car

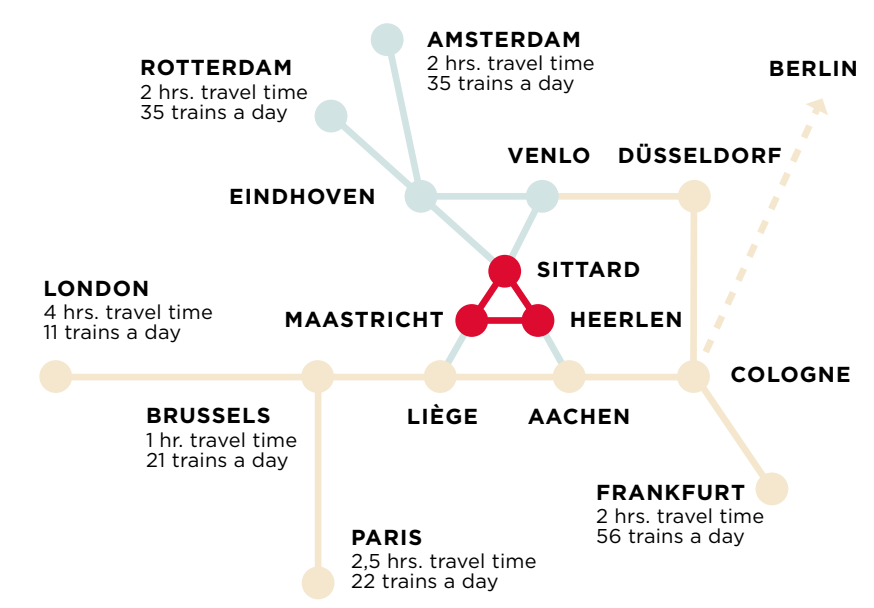
Because of the central location of the city, Maastricht is also easy accessible by car from all directions.

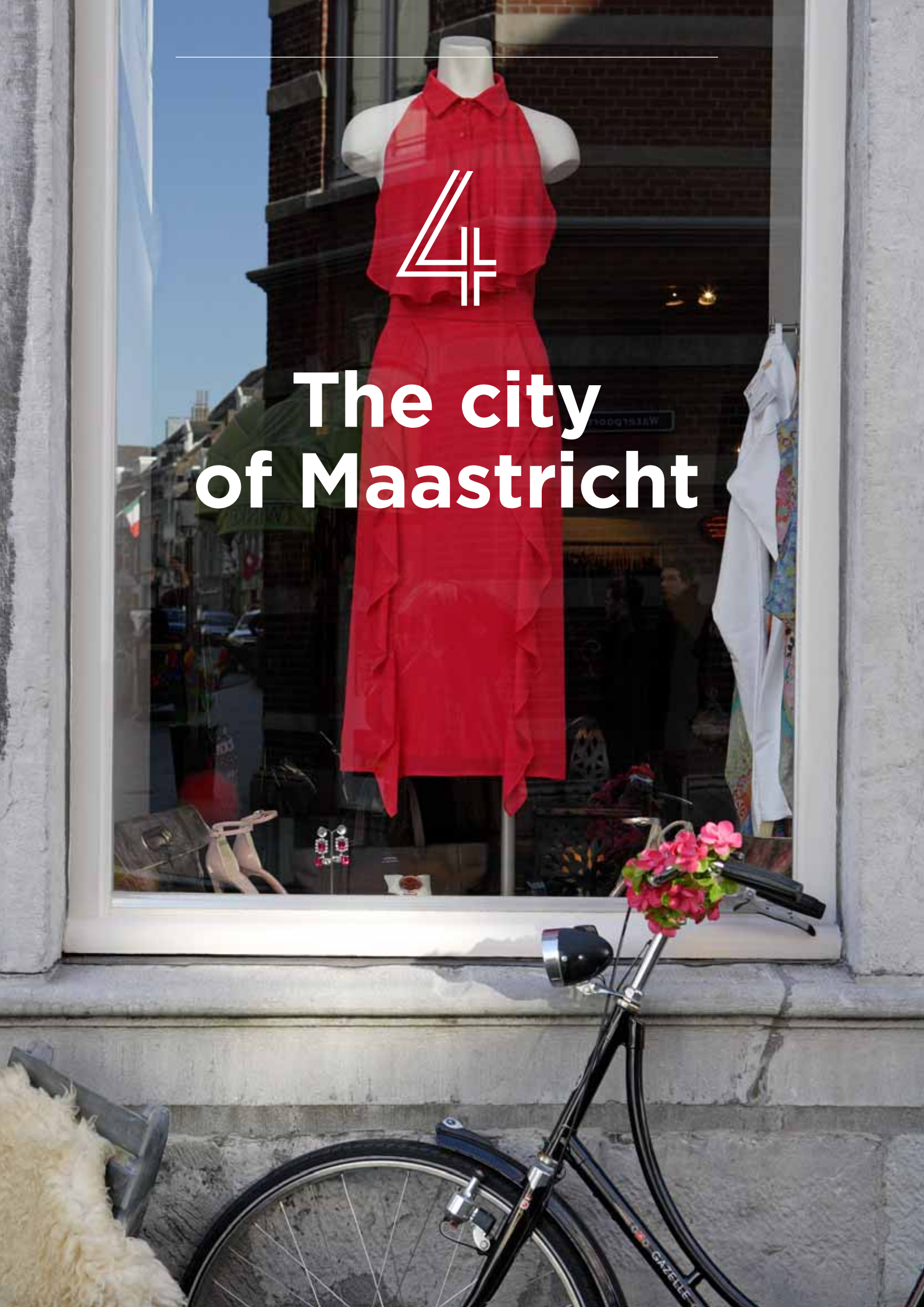
- From the north (Amsterdam, Utrecht, Eindhoven) **E25/A2**
- From the west (Brussels, Hasselt) **E40 > E25/A2 OR E314/A2**
- From the south (Paris, Liège) **E40 > E25/A2**
- From the east (Berlin, Düsseldorf, Köln/Bonn) **A79**

Visa

The Netherlands, Belgium and Germany are all Schengen members. A Schengen visa may be required for stays in the Netherlands or for arrivals in Belgium (Brussels - Zaventem International Airport) and Germany (Düsseldorf International Airport) for stays up to 90 days.

Please check Annex 3 for more detailed travel information and possible visa regulations.





The city of Maastricht

Cheers to the good life!

The city center of Maastricht is compact. It doesn't take long at all to know your way around. The highlights are all within walking distance and most streets are pedestrian zones, so you won't lose your way.

You can feel it, you can see it, and you can taste it.

Maastricht is a place with a unique and authentic energy and dynamism that you won't experience anywhere else in the Netherlands. Once it was the place where Germanic and Roman cultures collided; today it is the current mix of cultures, languages, and flavours that makes the city burst with creativity, research, enterprise, trend-setting and culinary delights. Today's Maastricht is a city that has the best of all worlds. There are historic buildings and trendy designer boutiques; majestic churches and thrilling cave adventures; inspired menus and inviting café terraces; lively festivals and sensational expositions; stately squares and vast vineyards. All this and more makes Maastricht a favourite destination, not only for exhibition and conferences, but also for a day of shopping, a weekend away for two, or an elegant European holiday.

Euregion

The Euregion Meuse-Rhine is the three-country area where the Netherlands, Germany, and Belgium meet, home to four million people and four different languages. At the heart of this area lies Maastricht.

Historic buildings and contemporary architecture

The whole of the Maastricht city center has been declared a protected national monument. In the historic buildings and elegant houses, you will find a rich variety of architectural styles from different ages from the early Roman period to the Maastricht Renaissance. Experience the seamless transition from stately, old façades to



contemporary architecture and the historic buildings of the future. One beautiful example is the architecture district Céramique, built on the former site of a prominent ceramics factory. Another is the Maastricht Academy of Fine Arts and Design (MAFAD) on Herdenkingsplein, designed by Limburg architect Wiel Arets, which UNESCO has named as one of the most beautiful buildings of the 20th century.

“

Cities can showcase themselves through the presence of restaurants and the culinary quality these offer. In this category Maastricht tops the rankings.”

Dutch national newspaper NRC, June 15, 2016

FAST FACTS

- 📍 Best city trip of the Netherlands (Zoover 2017 and 2016).
- 📍 Number 2 hotel, tourist and monument city of the Netherlands.
- 📍 Excellent gastronomy.



Vrijthof square

It's been called the most beautiful square in the country. Maybe it's because when you stand in the middle of the Vrijthof and look around, you could almost forget you're in the Netherlands. But perhaps it's also because it's the cultural heart of the city. The place where the theatre is framed by intriguing museums and spectacular churches. But it's also the place that undergoes a metamorphosis almost weekly, smoothly transitioning from each cultural season and event to the next, and the place where all the patchwork collection of colours and sounds of Carnival come together, the beautiful backdrop for the concerts of local favourite André Rieu, and where Maastricht and the region come to enjoy the many flavours of the Preuvenemint, the Netherlands' largest food festival.

City of shopping

Designer boutiques and major labels are found in abundance, punctuated by genuine one-of-a-kind shops with unique must-have fashion, lifestyle, and design items and accessories. All this only adds to the rich setting of the historic city center. The heart of the city is rightly legendary among fashion-lovers and shopaholics, who can shop to their hearts' content here, seven days a week.

Maastricht Culinaire: experience gastronomy

Maastricht Culinaire is a foundation to promote the culinary reputation of restaurants and the culinary image of the city of Maastricht, by safeguarding the quality of the members of Maastricht Culinaire and to further develop their standards, strong position in the market and spirit and co-operation. The participating restaurateurs live up to the title of gastronomic capital every single day. They do this by constantly surprising us with their culinary accomplishments – by enticing the senses with taste innovations, seasonal dishes and regional produce. These restaurateurs and master chefs promote the value of hospitality. They are often situated in a unique location – in the city center or an interesting site outside of the city. Each one offers an exceptional ambiance. Together, they aim to provide 'gastronomic experiences'.



Maastricht wine

Several varieties of wine grapes, including Pinot Noir, Riesling, and Müller-Thürgau, do well on the sun-drenched slopes of the Jeker Valley. Every year, Maastricht winegrowers produce delicious and award-winning wines. Like De Apostelhoeve, which produces six lovely white wines from Müller-Thurgau, Auxerrois, Riesling, and Pinot gris grapes, as well as two sparkling wines. The Jeker Valley is also home to the country's second-oldest vineyard, Hoeve Nekum, the wines of which are literally fit for a king - one of them, a Hoeve Nekum Riesling, was served at the wedding of King Willem-Alexander and Queen Máxima.

For the best wines, have a look in at the Netherlands' oldest wine shop, Thiessen Wijnkoopers, which also produces wines from its own urban vineyard! Tours including wine tasting are available for groups and by appointment.

Tap your feet

Going out in the Maastricht Region is inextricably intertwined with the typical Maastricht lust for life. From grand café to trendy bar or student hang-out, whether you want to have a good conversation or dance the night away, you'll find it here.

Hotel capacity

With over 5,000 hotel rooms available, Maastricht has a wide variety of stunning places to rest up for your exhibition or conference. Similar to the city's historic and international character, the places to stay are a mix of historic boutique hotels, charming - romantic hotels and modern design hotels, on both sides of the Meuse river. Whether you prefer a hotel in the lively city center or want a room in a nice and quiet part, Maastricht has all there is to have a marvelous stay. Our gastronomic character guarantees the best service and make your delegates feel at home.

Wide variety of hotels

All hotels are very close to the various squares, which makes it easy to go out for a drink after the exhibition or conference. Most hotels are also very close to each other so delegates can meet on the doorstep of their hotel.

In the area of MECC Maastricht, which is only a 15 minutes' walk from the city center, you can find several international hotel chains with modern conference hotels.

In the outskirts of Maastricht you can find exceptionally beautiful country estates where hospitality is enhanced by the surrounding verdant and tranquil nature. Most of these luxury hotels have beautiful gardens, wonderful terraces and heavenly spa & wellness facilities. All dedicated to a relaxing stay for your delegates.

An overview of recommended hotels can be found in Annex 2.

“

You should choose for Maastricht because of the professional and helpful staff at the conference centre, fine hotels, attractive and compact city and the many shops, restaurants and bars Maastricht has to offer.”

Mark J. Post, MD, PhD, Professor and Chair of Psychology of the Maastricht University and developer of the cultured beef burger.

Ideas for social venues



La Butte aux Bois

With its majestic garden, ponds and idyllic spots, La Butte aux Bois is one of the estates which one will always remember. In the heart of a verdant wooded area, one can dine, spend the night and enjoy the four-star hotel Relais & Chateau situated in Lanaken, Belgium, only a 10 minutes' drive from the center of Maastricht.

Max. capacity dinner/
reception: 1400 pax.

Max. capacity seated dinner: 960 pax.



Château St. Gerlach

The irresistibly attractive Geul valley, the marvelous 'Ingendael' wild life reserve, the own extensive parks and stylish baroque gardens located on the site, a farmhouse herb garden, a standard-tree fruit arboretum, and a rose garden – all features as such have given cause to the fame of Château St. Gerlach as the famous country estate of Maastricht.

Max. capacity dinner/
reception: 1000 pax.

Max. capacity seated dinner: 400 pax.



Museumplein Limburg

Imagine a place where knowledge and astonishment about science, technology design and our earth flourish and where past, present and future find each other. You can literally dine at the top of the world here. All events are tailor made, possibilities are endless. It all starts with just a small idea...

Max. capacity dinner/
reception: 500 pax.

Max. capacity seated dinner: 120 pax.



Buitenplaats Vaeshartelt

An outstanding medieval castle located in a small neighborhood near the center of Maastricht.

Dining in a castle, wandering around the gardens and spending the night in one of the historical rooms. 'Vaeshartelt' is a unique castle with its old elements and combined these with a beautiful park. A perfect base for discovering the surroundings of Maastricht.

Max. capacity dinner/
reception: 350 pax.

Max. capacity seated dinner: 296 pax.*
(capacity can be extended by building a temporary structure)



Dominicanen church

The 'Dominicanen' church, recently renovated, and decorated with beautiful old fresco's, is a perfect location for dinner parties and receptions. The location is a great reflection of the city of Maastricht: old, beautiful and fascinating!

Max. capacity dinner/
reception: 300 pax.

Max. capacity seated dinner: 150 pax.



Bonnefantenmuseum | Ipanema

With the unique characteristics of this building, inside and outside, the Bonnefanten museum is a true asset for the city of Maastricht. The contemporary ambiance of the museum and the trendy Ipanema café guarantee a great atmosphere and offer a decent location for events, dinners and other gatherings.

Max. capacity dinner/
reception: 500-750 pax.

Max. capacity seated dinner: 200 pax



Vaalsbroek

The historic castle Vaalsbroek, located in the Limburgian hilly landscape, is the ideal location for receptions, dinners and festivities. Three outer terraces, which all lead into the English castle garden, offer splendid places for receptions and barbecues. With the support of their outstanding team your event will become unique and memorable.

Max. capacity dinner/
reception: 1500 pax.

Max. capacity seated dinner: 250 pax.



Kasteel De Hoogenweerth

The castle and ponds of 'Kasteel de Hoogenweerth' are surrounded by an immense garden which gives you and your guests the maximum privacy. Suitable for spending the night in one of the lovely suites or have a meeting in one of the marvelously decorated rooms.

Max. capacity dinner/
reception: 357 pax.

Max. capacity seated dinner: 122 pax.



Château Neercanne

Château Neercanne has a rich cultural and culinary tradition. A dinner à la carte at the restaurant of Château Neercanne or a lunch at l'Auberge are both real treats. The attractive marl-built function rooms are ideal locations for parties, receptions and dinners. The unique wine cellars in the marl caves form an unparalleled setting for a wine-tasting session or for enjoying an aperitif.

Max. capacity dinner/
reception: 1000 pax.

Max. capacity seated dinner: 431 pax.



Rederij Stiphout (dinner cruise)

An enchanting dinner cruise through the city of Maastricht, passing by all wonderful and impressive sights of the city. Dinner is served with local delicious and fresh products. Having dinner while cruising on one of Stiphout's ships is a unique experience on its own.

Max. capacity dinner/
reception: 300 pax.

Max. capacity seated dinner: 250 pax.



5

Exhibitions we
are proud of

TEFAF

TEFAF Maastricht

TEFAF Maastricht runs every year in March at MECC Maastricht and welcomes over 70,000 visitors, from over 60 nationalities, demonstrating the wide reaching international appeal of the 275 dealers. In years of significant development for TEFAF, with the addition of two fairs in New York, the unrivalled heart of the organisation, the 30-year-old fair in Maastricht, continued to provide a dynamic sales platform for its exhibitors.

Both private and institutional buyers acquired some of the finest works available on the market, with sales reported across all price points and throughout all sections. TEFAF Maastricht continues to be an important event for museums from around the world, with over 200 visiting.

Patrick van Maris, CEO of TEFAF, said “Every year’s exhibitors put on an outstanding display of remarkable objects. To achieve this year on year is not easy: it takes dedication and connoisseurship. Yet again they have excelled themselves and have attracted international collectors from all corners of the globe to Maastricht, it is our job at TEFAF to provide a platform and environment that supports this extraordinary community both today and in the future.”

TEFAF was born in Maastricht, a picturesque medieval city in the southern Dutch province of Limburg in the mid-eighties. In 1988 it was relocated to the newly built Maastricht Congress Center (MECC). Since then, the

fair has grown exponentially and today it is an unmissable event for collectors, curators, museum directors, conservators and art lovers generally. The premises of MECC Maastricht became the door to over 7,000 years of art history.



“
For 30 years now, MECC Maastricht has been the perfect host for TEFAF. The excellent relationship we have had with MECC Maastricht all these years is definitely part of the success of TEFAF Maastricht, which has established an unrivalled reputation as being the world’s leading fair for art, antiques and design.”

Patrick van Maris Van Dijk, CEO TEFAF



UTECH Europe

UTECH Europe, is the leading international exhibitions and conference for the global polyurethanes industry. Every two years, the event is held at MECC in Maastricht attracting over 10,000 attendees. UTECH Europe is a three day event comprising a strategic conference and international exhibition.

The exhibition welcomes 200 top level exhibitors from a broad cross section of the polyurethanes industry to network, learn and source new business opportunities. One of the major attractions at the event is the strategic conference which, due to earlier success steadily grows every edition.

The conference is an innovative mix of papers on how to innovate products to meet real needs, how to open up new markets, the latest developments in raw materials, polyurethanes systems, processing equipment and manufacturing technologies. Companies receive the opportunity to present its latest developments to key polyurethane specialists in the global marketplace.

MECC Maastricht is host of UTECH Europe for over 15 years. It is always a pleasure to team up with Crain Global Polymer Group and help in the realisation of a successful event every time. Crain is one of the largest privately owned business media companies with 55 leading business, trade and consumer brands in North America, Europe and Asia. A partner MECC Maastricht is proud to have.

The UTECH trade fair is all about these industry sectors:

- Raw materials manufacture and supply (polyols / isocyanates)
- Processing machinery (liquid mixing / dispensing units)
- Handling equipment
- Analytical and testing services
- R&D
- Association / Federation
- Polyurethane systems manufacture and supply
- Processing machinery (molds and mold carriers)
- Coatings / Adhesives / Sealants / Elastomers
- Agent - raw materials
- Computing and control systems
- Laboratory / University
- Ancillary materials
- Manufacture and supply (catalysts / surfactants / flame retardants)
- Laboratory and testing equipment
- Agent - machinery
- Product design
- Market research



from the following industries:



Automotive



Construction



Furniture



Sanitary ware



Paints/coatings



Transportation



Footwear



Bedding



Marine/Offshore



Electrical



Building



Clothing



Household goods



General Engineering



Aerospace

1

Overview and floor plans

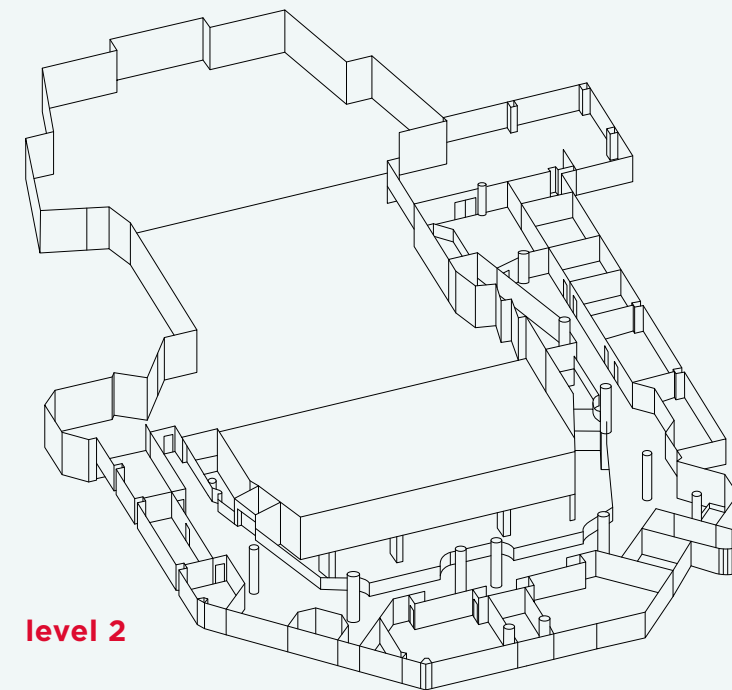
Venue overview

**Corporate Social Responsibility**

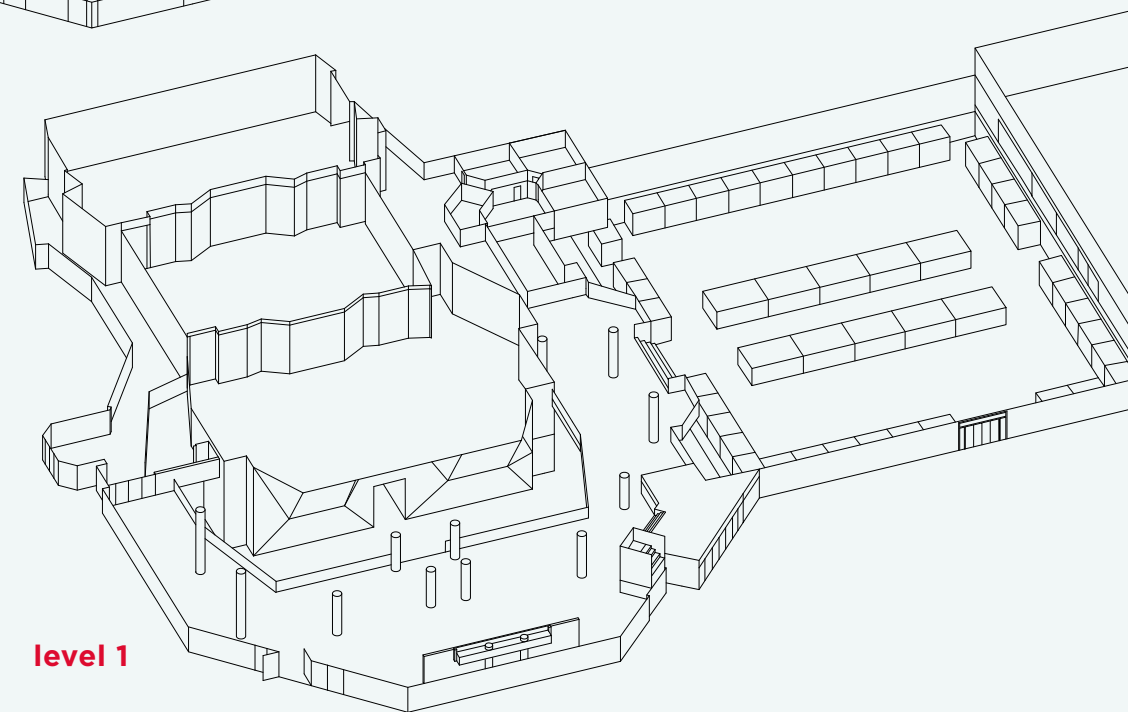
At MECC Maastricht, business decisions are never based purely on financial considerations. The social effects on the city and region are taken into account in everything we do. MECC Maastricht holds the Green Key Label Gold and follows the economic, environmental and social CSR policy. MECC has prepared a CSR statement to this end.

Green Key Certificated

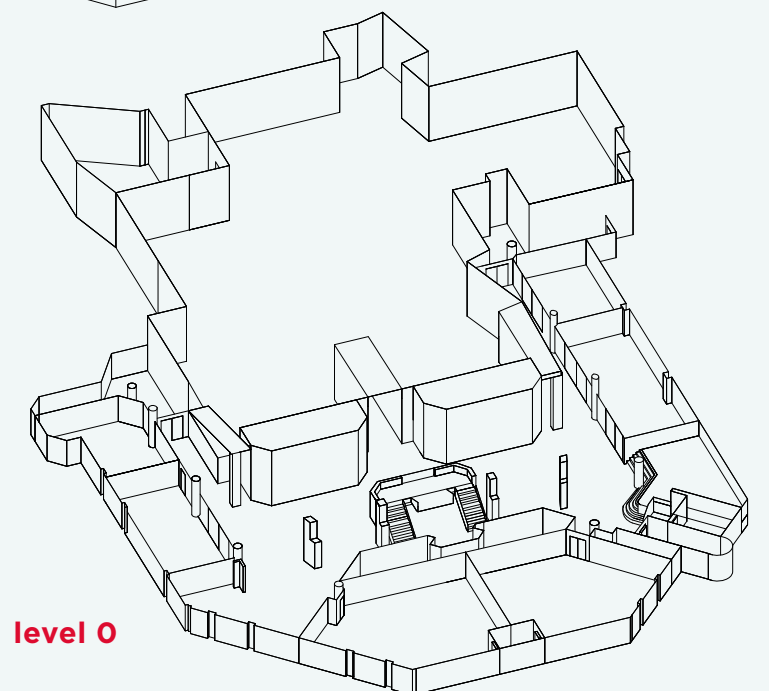
Green Key is the sustainability certification for tourist and business accommodations. Over 1,600 companies in 18 countries have joined Green Key's international certification program. In the Netherlands, Green Key certification is handled by the Foundation for Environmental, Safety, and Quality Certification (KMVK). MECC Maastricht is also officially affiliated with CSR Netherlands, by signing the CSR Netherlands manifesto.



level 2

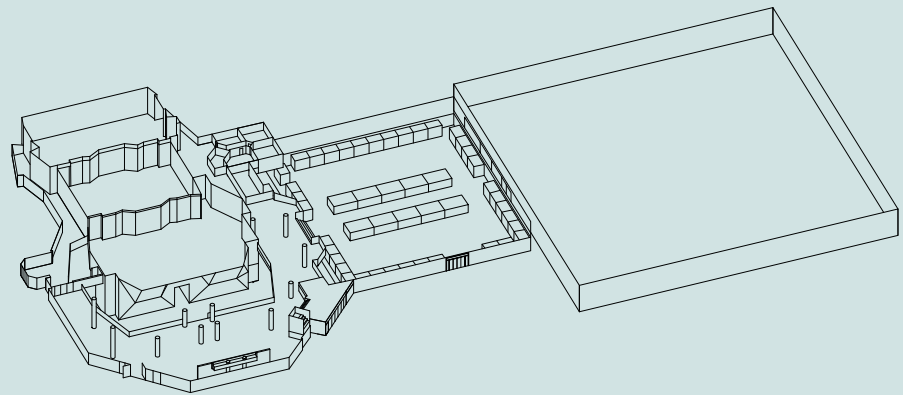










level 1



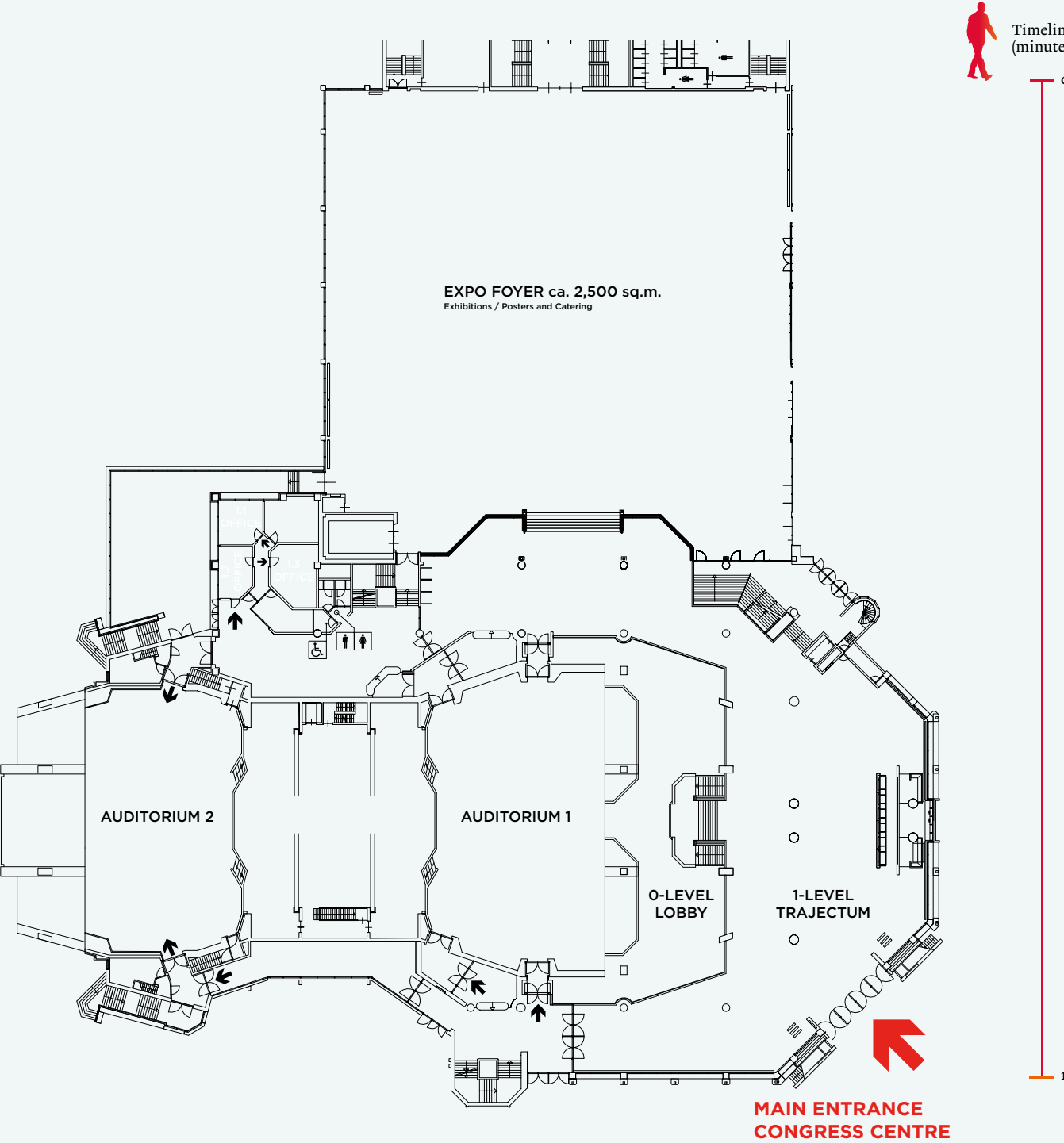
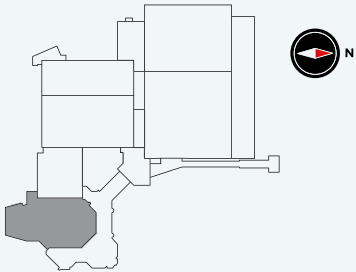
level 0

Floor plans



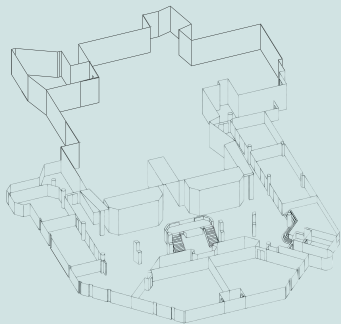
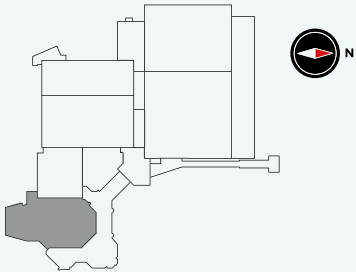
| | sq.m. |  |  |  |  |  |  |  |  |
|-------------------|-------|---|---|---|---|---|---|---|--|
| Auditorium 1 | 1.058 | | | | | | • | • | |
| Auditorium 2 | 592 | | | | | | • | • | |
| Auditorium 1 & 2 | 1.650 | | | | | | • | • | |
| 1.2 Office, small | 17 | | | | | 6 | | | • |
| 1.3 Office, large | 30 | | | | | 10 | | | |
| Expo Foyer | 2.500 | 1.940 | 1.200 | | 160 | | • | | • |
| Trajectum | 1.203 | | | | | | | | |









Trajectum / Level 1

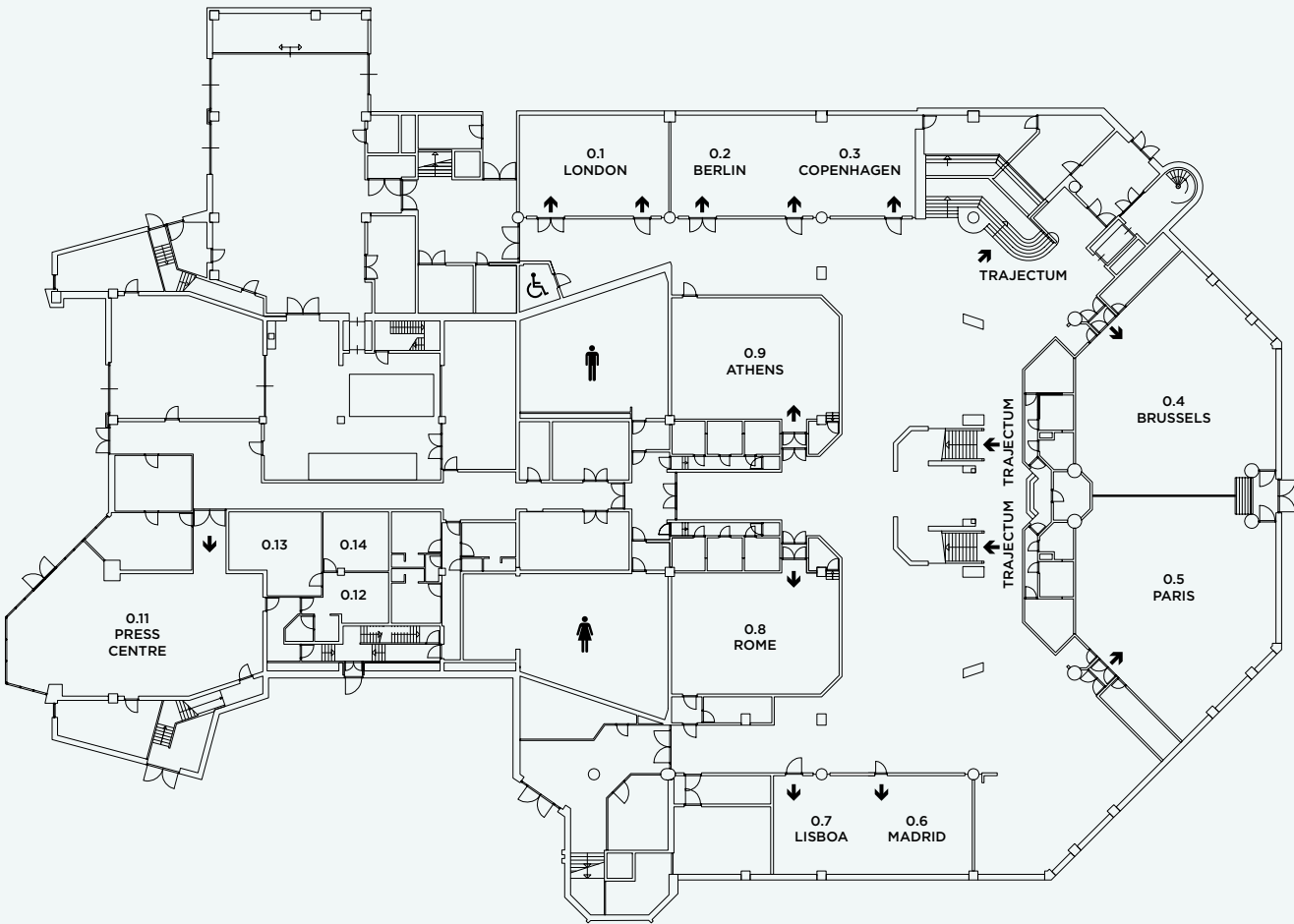




Lobby / Level 0

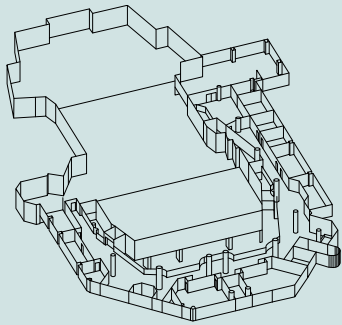
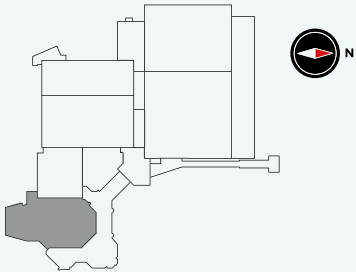










| | sq.m. |  |  |  |  |  |  |  |  |
|--|-------|---|---|---|---|---|---|---|--|
| | | Theatre | Cabaret | Classroom | U-shape | Carré | Sound system | Interpreter booths | Daylight |
| o.1 London | 76 | 90 | 44 | 32 | 24 | 28 | | | |
| o.2 Berlin | 76 | 90 | 44 | 32 | 24 | 28 | | | |
| o.3 Copenhagen | 47 | 49 | 30 | 20 | 16 | 20 | | | |
| o.2/o.3 combination Berlin/Copenhagen | 123 | 150 | 69 | 60 | 42 | 48 | | | |
| o.4 Brussels | 180 | 189 | 88 | 70 | 34 | 44 | • | • | |
| o.5 Paris | 180 | 189 | 88 | 70 | 34 | 44 | • | • | |
| o.4/o.5 combination Brussels/Paris | 379 | 400 | 144 | 128 | 66 | 76 | • | • | |
| o.6 Madrid | 48 | 49 | 27 | 20 | 16 | 20 | | | |
| o.7 Lisbon | 48 | 47 | 27 | 20 | 16 | 20 | | | |
| o.8 Rome | 100 | 118 | 52 | 40 | 26 | 36 | • | • | |
| o.9 Athens | 100 | 118 | 52 | 40 | 26 | 36 | • | • | |
| o.11 Pressroom | 150 | 152 | 74 | 52 | 32 | 48 | | | • |
| o.12 VIP kitchen incl. | 21 | | | | | | | | |
| o.13 VIP | 34 | | | | | | | | |
| o.14 VIP | 19 | | | | | | | | |
| Lobby | 792 | | | | | | | | |

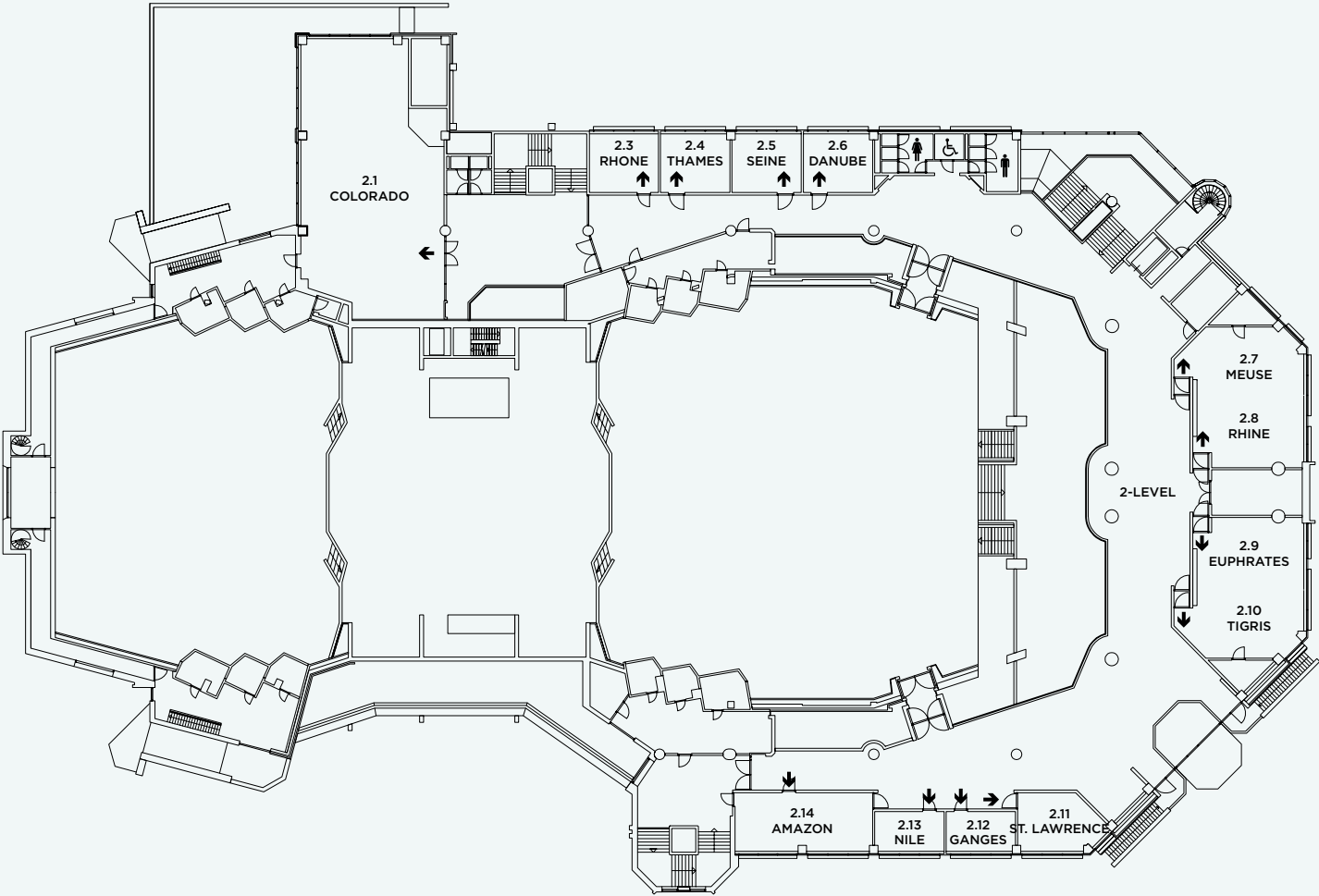




Promenade / Level 2



| | sq.m. |  |  |  |  |  |  |  |  |
|--|-------|---|---|---|---|---|---|---|--|
| 2.1 Colorado | 205 | 219 | 103 | 88 | 38 | 52 | | | • |
| 2.3 Rhone | 23 | 29 | | 8 | | 12 | | | • |
| 2.4 Thames | 23 | 27 | | 18 | | 12 | | | • |
| 2.5 Seine | 23 | 27 | | 8 | | 12 | | | • |
| 2.6 Danube | 23 | 27 | | 8 | | 12 | | | • |
| 2.7 Meuse | 45 | 41 | 24 | 18 | 16 | 20 | | | • |
| 2.8 Rhine | 44 | 36 | 24 | 20 | 16 | 20 | | | |
| 2.7/2.8 combination Meuse/Rhine | 88 | 97 | 54 | 30 | 24 | 28 | | | • |
| 2.9 Euphrates | 43 | 36 | 24 | 20 | 16 | 20 | | | • |
| 2.10 Tigris | 45 | 41 | 24 | 18 | 16 | 20 | | | • |
| 2.9/2.10 combination Euphrates/Tigris | 88 | 95 | 49 | 30 | 24 | 28 | | | • |
| 2.11 St. Lawrence | 260 | 30 | 16 | 10 | 10 | 12 | | | • |
| 2.12 Ganges | 15 | 17 | | | | 8 | | | • |
| 2.13 Nile | 15 | 17 | | | | 8 | | | • |
| 2.14 Amazon | 45 | 53 | 30 | 20 | 18 | 20 | | | • |
| Promenade | 566 | | | | | | | | |

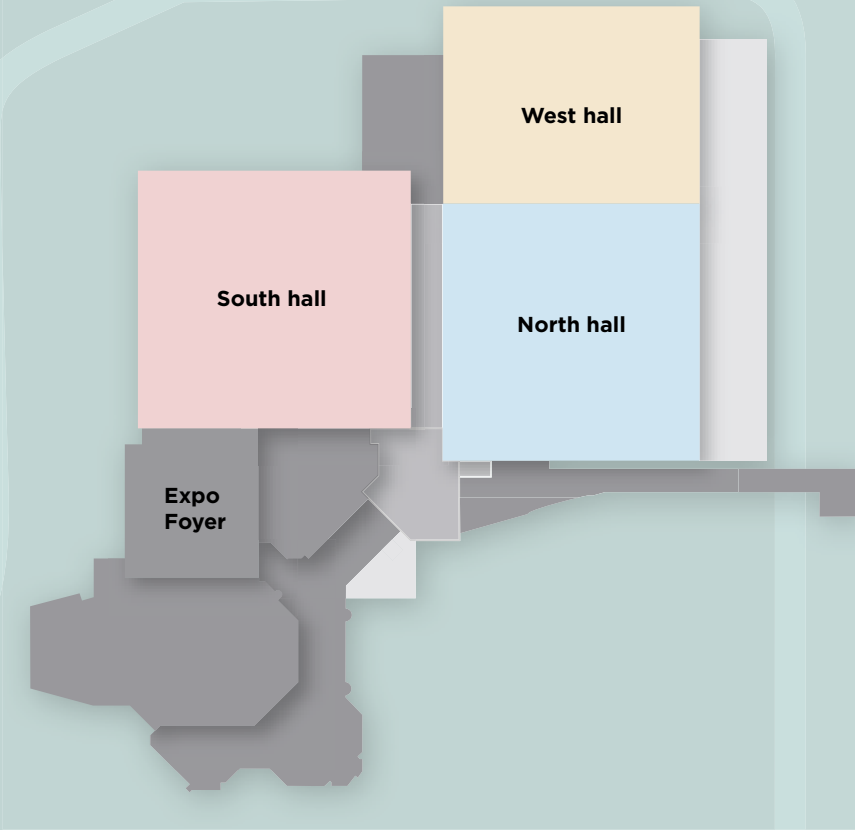




Exhibition halls

Technical specifications

| | North hall | South hall | West hall | Expo Foyer |
|---------------------------|--|---------------------------------|---------------------------------|--------------------------------------|
| dimensions | 100 x 100 m | 100 x 100 m | 100 x 70 m | 50 x 50 m |
| floorspace | 10.000 m ² | 10.000 m ² | 7.000 m ² | 2.500 m ² |
| gross height | 13 m | 17,5 m | 17,5 m | 7 m |
| free net height | 5,45 m | 5,45 m | 12,5 m | 4,78 m |
| maximum gate width | 5,45 m | 5,45 m | 5,45 m | |
| maximum gate height | 7 m | 7 m | 7 m | |
| emergency exits | 11 | 9 | 10 | 6 |
| maximum floorload bearing | 3.000 kg/m ² | 3.000 kg/m ² | 3.000 kg/m ² | 500 kg/m ² |
| lighting level | max 400 lux | max 400 lux | max 240 lux | |
| electrical power | main feeder channel in floor | main feeder channel in floor | main feeder channel in floor | main feeder channel in floor |
| telecommunications | tel. connection in ceiling | tel. connection in ceiling | tel. connection in ceiling | tel. and tv connection in ceiling |
| ventilations | through underground network | through underground network | through underground network | |
| heating | by air heaters | by air heaters | by air heaters | airco |
| height between halls | 5,6 m | 5,6 m | | |
| elevator | max 6.300 kg / 13.890 lbs entrance: 2,49 m (w) x 2,19 m (h) X 6,78 m (d) in favour of Expo Foyer | | | |



2

Hotel overview

Hotels Maastricht & surroundings

| Hotel name | Location | Stars | Rooms | Distance to the venue (km) | Distance to the city centre (km) |
|---------------------------------------|------------|-------|-------|----------------------------|----------------------------------|
| NH Maastricht | Maastricht | **** | 275 | 0 | 5 |
| Hotel van der Valk | Maastricht | **** | 189 | 1 | 5 |
| Novum Hotel Apple Park Maastricht | Maastricht | **** | 165 | 5 | 4 |
| Amrâth Hotel de l'Empereur | Maastricht | **** | 149 | 2 | 0 |
| Crowne Plaza Maastricht | Maastricht | **** | 144 | 2 | 0 |
| Bastion Maastricht | Maastricht | **** | 123 | 3 | 0 |
| Hampshire Eden Designhotel Maastricht | Maastricht | **** | 105 | 2 | 0 |
| Accor Hotel Novotel | Maastricht | **** | 94 | 1 | 5 |
| Buitenplaats Vaeshartelt | Maastricht | *** | 84 | 6 | 6 |
| Hotel Beaumont | Maastricht | **** | 75 | 2 | 0 |
| Kaboom Hotel | Maastricht | *** | 63 | 2 | 0 |
| Townhouse Maastricht | Maastricht | **** | 63 | 2 | 0 |
| Kruisherhotel Maastricht | Maastricht | **** | 60 | 3 | 0 |
| City Centre Hotel Mabi | Maastricht | **** | 55 | 3 | 0 |
| Hotel Derlon | Maastricht | **** | 50 | 2 | 0 |
| Aparthotel Randwyck | Maastricht | **** | 49 | 0,3 | 5 |
| Amrâth Hotel Ducasque | Maastricht | **** | 45 | 2 | 0 |
| Stayokay Maastricht | Maastricht | ** | 39 | 2 | 0 |
| Hotel La Bourse | Maastricht | ** | 28 | 3 | 0 |
| Teaching hotel | Maastricht | *** | 26 | 5 | 3 |
| The Dutch | Maastricht | **** | 26 | 2 | 0 |
| Hotel BEEZ | Maastricht | ** | 24 | 3 | 0 |
| Hotel In den Hoof | Maastricht | *** | 24 | 6 | 6 |
| Hotel d'Orangerie | Maastricht | *** | 22 | 3 | 0 |
| Hotel La Colombe | Maastricht | ** | 21 | 3 | 0 |
| Hotel le Theatre | Maastricht | **** | 20 | 3 | 0 |
| Urban Residences Maastricht | Maastricht | **** | 19 | 2 | 0 |
| Hotel Botticelli | Maastricht | *** | 18 | 3 | 0 |
| Boutique Hotel St. Jacob | Maastricht | **** | 16 | 3 | 0 |
| Hotel de Pauwenhof | Maastricht | *** | 16 | 3 | 0 |
| Zenden Designhotel | Maastricht | *** | 16 | 2 | 0 |
| Hotel Les Charmes | Maastricht | *** | 15 | 2 | 0 |
| Hotel Au Quartier Petit Bonheur | Maastricht | *** | 14 | 2 | 0 |
| St. Martenslane | Maastricht | **** | 13 | 2 | 0 |
| Hoogenweerth Suites | Maastricht | **** | 12 | 3 | 6 |
| Chambres d'hotes Rekko | Maastricht | *** | 11 | 3 | 0 |
| Hotel Matuchi | Maastricht | ** | 10 | 3 | 0 |
| Hotel Pastis | Maastricht | *** | 10 | 2 | 1 |
| Saillant hotel Maastricht | Maastricht | *** | 10 | 3 | 0 |
| B&B Trash Deluxe | Maastricht | *** | 8 | 3 | 0 |
| Residences Maastricht | Maastricht | *** | 8 | 3 | 0 |
| Trash Deluxe | Maastricht | B&B | 8 | 3 | 0 |
| Hotel DIS | Maastricht | *** | 7 | 2 | 0 |
| Hotel Brasserie Brittanique | Maastricht | *** | 6 | 3 | 0 |
| BE41 | Maastricht | B&B | 5 | 3 | 0 |
| Haas op het Vrijthof | Maastricht | B&B | 4 | 7 | 3 |



Hotels Maastricht & surroundings

| Hotel name | Location | Stars | Rooms | Distance to the venue (km) | Distance to the city centre (km) |
|--|--------------|-------|-------|----------------------------|----------------------------------|
| Hotel Le Virage | Maastricht | ** | 4 | 2 | 0 |
| zbe Hotel kind of Blue | Maastricht | *** | 3 | 2 | 5 |
| B&B Bourgogne Suite | Maastricht | *** | 3 | 2 | 0 |
| Hotel Per Sempre | Maastricht | ** | 2 | 3 | 0 |
| Hotel Van der Valk Heerlen | Surroundings | **** | 189 | 26,3 | 24,3 |
| Hotel Pullman Aachen Quellenhof | Surroundings | **** | 183 | 39,7 | 37,7 |
| Hotel Van der Valk Urmond | Surroundings | **** | 166 | 22,2 | 20,2 |
| Abdij Rolduc | Surroundings | *** | 160 | 32 | 35 |
| Ramada Plaza Liège City Centre | Surroundings | **** | 149 | 29,9 | 30,3 |
| Bilderberg Kasteel Vaalsbroek | Surroundings | **** | 130 | 39,9 | 38 |
| Crowne Plaza Liège | Surroundings | **** | 125 | 31,5 | 31,9 |
| SnowWorld | Surroundings | **** | 100 | 29 | 27 |
| Eurotel Lanaken | Surroundings | **** | 77 | 10,3 | 8,7 |
| Hotel Kasteel Bloemendal | Surroundings | **** | 77 | 38,8 | 36,8 |
| Landal Kasteeldomein de Cauberg (bungalow) | Surroundings | **** | 75 | 14,2 | 17,2 |
| Amrâth hotel Born/Sittard | Surroundings | **** | 59 | 31,9 | 29,7 |
| Sandton Château de Raay | Surroundings | **** | 50 | 71 | 74 |
| Hotel Winselerhof | Surroundings | **** | 49 | 31,5 | 29,5 |
| Hotel - Restaurant Kasteel Erenstein | Surroundings | **** | 44 | 32,5 | 30,5 |
| Bastion Geleen | Surroundings | *** | 40 | 18,8 | 16,8 |
| Bastion Heerlen | Surroundings | *** | 40 | 27 | 25 |
| Hotel Kasteel Terworm | Surroundings | **** | 40 | 25 | 23,6 |
| Altembrouck | Surroundings | **** | 33 | 16,6 | 19,6 |
| B&B 4 Seasons | Surroundings | *** | 4 | 11,6 | 12,6 |
| Hotel Schaepkens van St. Fijt | Valkenburg | *** | 130 | 14,4 | 12,4 |
| Best Western Hotel Walram | Valkenburg | *** | 106 | 15 | 13 |
| Chateau St. Gerlach | Valkenburg | ***** | 97 | 12 | 10 |
| Parkhotel Valkenburg | Valkenburg | **** | 93 | 15 | 14 |
| Hotel 2000 | Valkenburg | *** | 60 | 13,5 | 11,6 |
| Thermae 2000 | Valkenburg | **** | 60 | 11 | 11 |
| Hotel Riche | Valkenburg | **** | 55 | 15 | 13 |
| Grand Hotel Monopole | Valkenburg | *** | 46 | 14,3 | 12,3 |
| Grand Hotel Voncken - Hampshire Classic | Valkenburg | **** | 39 | 15 | 13 |
| Hotel Vue | Valkenburg | *** | 36 | 9 | 9 |
| Atlanta Hotel | Valkenburg | **** | 34 | 15,1 | 13,1 |
| Hotel Tummers | Valkenburg | **** | 34 | 14 | 12 |
| Fletcher hotel Valkenburg | Valkenburg | *** | 33 | 13 | 12 |
| Fletcher hotel de Burghoeve | Valkenburg | *** | 27 | 13 | 11 |
| Hotel Lamerichs | Valkenburg | *** | 25 | 9 | 8 |

3

Accessibility

Selection of international arrivals
at Brussels and Düsseldorf



Brussels Zaventem Airport

| Country | City | Weekly arrivals |
|----------------------|--------------|-----------------|
| Burkina Faso | Ouagadougou | 21 |
| China | Beijing | 7 |
| Czech Republic | Prague | 46 |
| Dem. Rep. Congo | Kinshasa | 21 |
| Denmark | Copenhagen | 185 |
| Egypt | Cairo | 7 |
| Finland | Helsinki | 95 |
| France | Paris (CDG) | 42 |
| Germany | Berlin | 163 |
| Germany | Frankfurt | 185 |
| Germany | Munich | 168 |
| Hungary | Budapest | 34 |
| Mexico | Cancun | 7 |
| Morocco | Marrakesh | 7 |
| Netherlands, the | Amsterdam | 169 |
| Poland | Warschau | 86 |
| Portugal | Lisbon | 88 |
| Senegal | Dakar | 3 |
| Spain | Barcelona | 79 |
| Spain | Madrid | 114 |
| Sweden | Stockholm | 50 |
| Switzerland | Geneva | 159 |
| Turkey | Istanbul | 21 |
| United Arab Emirates | Dubai | 3 |
| United Kingdom | London (LHR) | 210 |
| United States | Chicago | 7 |
| United States | New York | 57 |

Düsseldorf Airport

| Country | City | Weekly arrivals |
|----------------------|--------------|-----------------|
| Austria | Vienna | 87 |
| China | Beijing | 5 |
| Czech Republic | Prague | 39 |
| Denmark | Copenhagen | 53 |
| Finland | Helsinki | 34 |
| France | Paris (CDG) | 97 |
| Germany | Berlin | 111 |
| Germany | Frankfurt | 49 |
| Germany | Munich | 156 |
| Hungary | Budapest | 24 |
| Mexico | Cancun | 3 |
| Netherlands, the | Amsterdam | 35 |
| Poland | Warschau | 30 |
| Portugal | Lisbon | 7 |
| Spain | Barcelona | 35 |
| Spain | Madrid | 43 |
| Sweden | Stockholm | 30 |
| Switzerland | Geneva | 27 |
| Turkey | Istanbul | 48 |
| United Arab Emirates | Dubai | 14 |
| United Kingdom | London (LHR) | 81 |
| United States | Chicago | 13 |
| United States | New York | 17 |

Low cost carriers airports

Maastricht is even perfectly accessible budget wise via the 6 low cost carriers airports, all within one hour travel.



Airlines and their IATA code

| | | |
|-------------------------|-----------------------|-------------------------|
| Air Arabia - 30 | Germanwings - PW | SATA International - S4 |
| airberlin - AB | Go2Sky - 6G | SkyWork Airlines - SX |
| Air Corsica - XK | Jet Air - TB | Sun Express - XQ |
| Austrian Airlines - OS | Luxair - LG | Thomas Cook - MT |
| Blue Air - OB | Meridiana - IG | Transavia - TO |
| Borajet Airlines - YB | NIKI Luftfahrt - HG | TUIfly - X3 |
| Condor - DE | Olympic Air - OA | Turkish Airlines - TK |
| Corendon - XC | Onur Air - 8Q | Vueling - Vy |
| CSA Czech Airlines - OK | Pegasus Airlines - PC | Wizz Air - W6 |
| EasyJet - U2 | Pobeda Airlines - DP | |
| Eurowings - EW | Ryanair - FR | |

MAASTRICHT AIRPORT

- Alicante - FR
- Antalya - XC
- Barcelona - VY
- Bari - FR
- Girona - FR
- Katowice - W6

LIEGE AIRPORT

- Agadir - MT
- Ajaccio - XK
- Alicante - TB
- Antalya - TB/MT
- Bastio - XK
- Bodrum - TB/MT
- Casablanca - TB
- Corfu - TB/MT
- Djerba - TB/MT
- Enfidha - TB/MT
- Heraclion - TB/MT
- Ibiza - TB
- Izmir - TB/MT
- Kos - TB/MT
- Las Palmas - TB
- Palma de Mallorca - TB/MT
- Rhodes - TB/MT
- Tenerife - TB/MT
- Tetouan - TB

EINDHOVEN AIRPORT

- Alanya - TO
- Alghero - TO
- Alicante - TO/FR
- Antalya - TO/X3/XC
- Arrecife - TO/X3/FR
- Athens - TO
- Barcelona - TO/VY
- Belgrade - W6
- Bodrum - TO/XC
- Bucharest - W6
- Bologna
- Brno - W6
- Budapest - W6
- Catania - FR
- Chania - TO
- Cluj Napoca - W6
- Corfu - TO
- Dalaman - TO/XC
- Debrecen - W6
- Dublin - FR
- Faro - TO/FR
- Fez - FR
- Fuerteventura - TO/X3/VY
- Gdansk - W6
- Girona - TO/X3/VY
- Heraklion - TO
- Hurghada - TO
- Ibiza - X3
- Innsbruck - TO

- Istanbul - TO
- Katowice - W6
- Copenhagen - TO
- Kos - TO
- Krakow - W6
- Las Palmas - TO/FR/VY
- Lisbon - TO/FR
- London - FR
- Madrid - VY/FR
- Malaga - TO/FR/VY
- Malta - FR
- Manchester - FR
- Marrakech - FR
- Marsa Alam - TO
- Marseille - TO
- Milan - FR
- Modlin - W6
- Munich - TO
- Murcia - FR
- Nador - FR
- Nice - TO
- Palma de Mallorca - TO/FR/VY
- Pisa - FR
- Porto - TO/FR
- Poznan - W6
- Prague - W6
- Reus - FR
- Rhodes - TO
- Riga - W6
- Rome - FR
- Salzburg - TO
- Seville - FR/VY
- Skopje - W6
- Sofia - W6
- Tenerife - TO/FR/VY
- Trapani - FR
- Tuzla - W6
- Valencia - TO
- Venice - FR
- Vilnius - W6
- Warsaw - W6
- Wroclaw - W6
- Zakynthos - TO

COLOGNE AIRPORT

- Alicante - FR
- Ankara - YB/PC
- Antalya - XC/DE/PW/8Q/PC/XQ/X3
- Arrecife - AB
- Athens - PW
- Barcelona - PW/FR
- Bari - PW
- Bastia - PW
- Bern - SX
- Budapest - PW
- Bucharest-Otopeni - OB
- Bologna - PW
- Cagliari - PW/OA
- Calvi - PW
- Catania - PW
- Cluj Napoka - W6
- Danzig - W6

- Dublin - PW/FR
- Dubrovnik - LG/X3
- Edinburgh - PW
- Faro - OK/PW
- Fuerteventura - AB/PW/XQ/X3
- Funchal - AB/X3
- Heraklion - PW
- Hurghada - AB/PW/XQ
- Ibiza - PW
- Istanbul - YB/PC/TK
- Izmir - XQ
- Jerez de la Frontera - PW
- Katowice - W6
- Kiev-Zhuliyani - W6
- Klagenfurt - PW
- Copenhagen - FR
- Larnaca - PW
- Las Palmas - AB/PW/FR/X3
- Lisbon - PW/6G/S4/ X3
- London - 42/PW/FR
- Madrid - FR
- Malaga - AB/FR
- Malta - FR
- Manchester - PW
- Marrakech - PW
- Milan - EW/PW
- Moscow - DP
- Nador - PW/30/XQ
- Naples - PW
- Nice - PW
- Olbia - AB
- Palermo - PW
- Palma de Mallorca - AB/DE/PW/FR
- Pisa - PW
- Porto - PW - FR
- Prague - EW/PW
- Riga - FR
- Rome - FR/PW
- Salzburg - AB/PW/HG
- Sarajevo - PW
- Skopje - W6
- Sofia - W6
- Split - PW
- Stockholm - PW
- Tenerife - AB/PW/FR/X3
- Thessaloniki - PW
- Tunis - PW/IG
- Valencia - FR
- Venice - PW
- Warsaw - FR
- Vienna - OS/PW
- Zagreb - PW
- Zurich - PW

WEEZE AIRPORT

- Agadir - FR
- Alicante - FR
- Ancona - FR
- Bari - FR
- Beziere - FR
- Bologna - FR

- Burgas - FR
- Bydgoszcz - FR
- Cagliari - FR
- Comiso (Sicilies) - FR
- Corfu - FR
- Edinburgh - FR
- Faro - FR
- Fez - FR
- FuertaVentura - FR
- Gerona - FR
- Gran Canaria - FR
- Ibiza - FR
- Crete - FR
- Lamezia - FR
- Lanzarote - FR
- London - FR
- Malaga - FR
- Mallorca - FR/TO
- Malta - FR
- Marrakech - FR
- Milan - FR
- Oujda - FR
- Palermo - FR
- Pescara - FR
- Pisa - FR
- Porto - FR
- Rhodes - FR
- Rome - FR
- Santander - FR
- Smaland - FR
- Stockholm - FR
- Talinn - FR
- Tenerife - FR
- Thessaloniki - TO
- Timisoara - FR
- Valentia - FR
- Zadar - FR

CHARLEROI AIRPORT

- Agadir - FR
- Algiers - TB
- Alicante - FR/TB
- Almeria - FR
- Ancona - FR
- Arecife (Lanzarote) - FR
- Athens - FR
- Bari - FR
- Bejaia - TB
- Biarritz - FR
- Budapest - FR/W6
- Bucharest - W6
- Bologna - FR
- Bordeaux - FR
- Bratislava - FR
- Brindisi - FR
- Cagliari - FR
- Carcassonne - FR
- Casablanca - TB
- Cluj-Napoca - W6
- Comiso - FR
- Constantine - TB
- Debrecen - W6
- Djerba - TB

- Dublin - FR
- Edinburgh - FR
- Enfidha - TB
- Faro - FR
- Fez - FR/TB
- Fuertaventura - FR
- Gdansk - W6
- Gerona - FR
- Istanbul - PC
- Copenhagen - FR
- Krakow - FR
- Lamezia Terme - FR
- Las Palmas - FR
- Ljubliana - W6
- Mador - FR/TB
- Madrid - FR
- Malaga - FR/TB
- Manchester - FR
- Marrakech - FR
- Marseille - FR
- Milan - FR
- Montpellier - FR
- Murcia - TB
- Nimes - FR
- Oran - TB
- Oslo - FR
- Oujda - FR/TB
- Palma de Mallorca - FR/TB
- Paphos - W6
- Pescara - FR
- Pisa - FR
- Podgorika - FR
- Porto - FR
- Prague - TB
- Rabat - FR
- Riga - FR
- Rodez - FR
- Rome - FR
- Santander - FR
- Seville - FR
- Skopje - FR
- Sofia - W6
- Stockholm - FR
- Tanger - FR/TB
- Tenerife - FR/TB
- Thessaloniki - FR
- Timisoara - W6
- Tlemcen - TB
- Toulon - TB
- Toulouse - FR
- Trapani - FR
- Turin - FR
- Valencia - FR
- Venice - FR
- Verona - FR
- Vilnius - FR
- Warsaw - FR/W6
- Zaragoza - F

Perfect shuttle service

Complimentary (in consultation)

Once delegates arrive either at the Brussels International or Düsseldorf International Airport they can be pleasantly welcomed by a professional host at a Maastricht and/or exhibition and congress styled welcome desk. The host will inform the delegates in detail about their booked shuttle transportation and when the driver will pick them up.

Jacobs Travel has substantial airport shuttle know how and a lot of experience in both individual and group transportations. They work with the highest professional drivers and modern vehicles.

Conference delegates can make use of either private or collective airport shuttle service. In order to shuttle as tailor made as possible, delegates can reserve their shuttle seats online, via an online reservation link of Jacobs Travel, prior to the start of the conference. They only have to fill out their personal details, flight/train number, preferred shuttle time and service, pick up and drop off location. Due to this information we can easily ensure all registered delegates of their seat as we know exactly the amount of shuttles (seats) required when and where.

After registration, delegates receive a confirmation of their reservation which will be made available to them directly via e-mail and acts as their personal shuttle ticket. If applicable, they will also receive an invoice. Delegates and organizers get a reduced rate for their shuttle.

The luxurious Comfort Class Coaches from Jacobs Travel are perfectly suitable for these kind of group transportations. Their modern vehicles, equipped with on board WIFI, are exclusively driven by experienced and representative drivers with years of experience and a broad touristic knowledge.

This ensures delegates of a safe and comfortable trip to Maastricht and their hotel.

During the drive to Maastricht, the driver will provide his passengers of a short and interesting Maastricht introduction. Also, the exhibition or congress program and/or booklet can already be distributed in order to prepare properly.

Once in Maastricht delegates will be brought directly to their hotel or one of the strategically appointed bus stops within the city center nearby their hotel.

Based on years of substantial airport shuttle experience, knowhow of incoming flights, and number of delegates, we will provide the necessary shuttle transfers per day from and or to both Brussels International and Düsseldorf International Airport.

In order for delegates to make use of this service, they need to register and reserve their seat prior to the start of the exhibition or congress via the online reservation link which will be provided by Jacobs Travel and can easily be implemented in the exhibition and congress/hotel reservation module.



Travel details



Shuttle service

| Location | Airport Shuttle | Private taxi van | Private taxi |
|---|-----------------|------------------|--------------|
| From and/or to the main conference hubs Brussels Zaventem Airport Düsseldorf Airport | Ü Ü | Ü Ü | Ü Ü |
| From and/or to other Belgian locations Brussels South Charleroi Airport Brussels Midi train station Liège Airport/train station | | Ü Ü Ü | Ü Ü Ü |
| From and/or to other German locations Köln (Cologne) Airport Aachen train station | | Ü Ü | Ü Ü |
| From and/or to Dutch locations Eindhoven Airport Amsterdam Schiphol Airport | | Ü Ü | Ü Ü |



By train

| From | To | First departure | Last departure | Duration | Frequency |
|-----------------------------|-----------------------------|-----------------|----------------|------------------|--------------------|
| Maastricht Central Station | Schiphol Airport | 05:24 | 22:24 | 2 hrs. + 35 min. | *** - 35x per day |
| Schiphol Airport | Maastricht Central Station | 04:05 | 22:24 | 2 hrs. + 35 min. | *** - 35x per day |
| Maastricht Central Station | Eindhoven Airport | 05:24 | 22:54 | 1 h. + 34 min. | *** - 37x per day |
| Eindhoven Airport | Maastricht Central Station | 05:50 | 23:35 | 1 h. + 33 min. | *** - 36x per day |
| Maastricht Central Station | Liège-Guillemins | 06:49 | 22:49 | 31 min. | **** - 18x per day |
| Liège-Guillemins | Maastricht Central Station | 06:40 | 22:40 | 32 min. | **** - 19x per day |
| Brussels Int. Train Station | Liège-Guillemins | 05:39 | 00:21 | 1 h. + 27 min. | * - 81x per day |
| Liège-Guillemins | Brussels Int. Train Station | 04:40 | 23:08 | 1 h. + 23 min. | ** - 80x per day |



Bus service

| From | First departure | Last departure | Duration | Frequency |
|---|-----------------|----------------|--------------------------------------|--------------------------|
| Intercity bus Düsseldorf Ö Maastricht Ö Liège-Guillemins Liège-Guillemins Ö Maastricht Ö Düsseldorf | 10:50 07:35 | 16:50 14:50 | 2 hrs. + 15 min. 2 hrs. + 15 min. | 2x per day 2x per day |
| KLM Bus Service* Schiphol Airport Ö Eindhoven Airport Ö Maastricht/Aachen Airport Ö Maastricht Central Station Maastricht Central Station Ö Maastricht/Aachen Airport Ö Eindhoven Airport Ö Schiphol Airport | 10:15 05:00 | 20:30 15:00 | 3 hrs. 3 hrs. | 2x per day 2x per day |

* If you stay in Maastricht and fly from Amsterdam Schiphol, you can travel to and from the airport for free and in comfort with the KLM Bus.

How it works

- Book a KLM ticket on KLM.com to your destination with Maastricht or Eindhoven as the starting point or final destination;
- The KLM bus will take you efficiently and comfortably to Maastricht Central station, Maastricht Aachen Airport or Eindhoven Airport and back to Schiphol airport again;
- Boarding the bus is possible from 20 minutes before departure (in Maastricht: when the bus arrives);
- Your baggage allowance as stated on your ticket also applies to the part travelled by bus;

Benefits

- To get on the bus, simply show your KLM ticket to the bus driver. You don't need to check in for the bus trip;
- Save on costs for petrol, taxi or train;
- Comfortably in a reclining seat;
- Free Wi-Fi and toilet on the bus;
- Coffee, tea and water free of charge;
- Travelling with a group by KLM bus is possible. The only restriction is the capacity of the bus.

Note: the KLM bus can be used only if the service is visible on your ticket. The itinerary shown on your ticket should begin an/or end in Maastricht or Eindhoven. If your ticket does not show these stretches, then you may contact your booking office to have the bus-service included for free.

Visa requirements

Which visa do I need to travel to the Netherlands, Belgium and Germany

As Maastricht is centrally located in Europe, surrounded by 8th International Airports situated in The Netherlands, Belgium and Germany all within an hour’s drive, delegates can easily choose the most convenient airport/ country to travel. The Netherlands, as well as Belgium and Germany are all Schengen members and possible visa regulations, per country as mentioned bellow, apply to them all.

A Schengen visa may be needed to stay in the Netherlands or to arrive in Belgium (Brussels - Zaventhem International Airport) and Germany (Düsseldorf International airport) for a stay up to 90 days. With a transit visa, you can change flights in the Netherlands. Different rules apply if you wish to stay for longer than 90 days.

Countries whose nationals must be in possession of a visa when crossing the external borders of the Netherlands, Belgium and Germany

| | | | |
|------------------------------|--------------------|-----------------------|-----------------|
| Afghanistan | Djibouti | Lesotho | Saudi Arabia |
| Algeria | Dominican Republic | Liberia | Senegal |
| Angola | Ecuador | Libya | Sierra Leone |
| Armenia | Egypt | Madagascar | Solomon Islands |
| Azerbaijan | Equatorial Guinea | Malawi | Somalia |
| Bahrain | Eritrea | Maldives | South Africa |
| Bangladesh | Ethiopia | Mali | South Sudan |
| Belarus | Fiji | Marshall Islands | Sri Lanka |
| Belize | Gabon | Mauritania | Sudan |
| Benin | Gambia | Micronesia | Suriname |
| Bhutan | Georgia | Mongolia | Swaziland |
| Bolivia | Ghana | Morocco | Syria |
| Botswana | Guinea | Mozambique | Tajikistan |
| Burkina Faso | Guinea-Bissau | Namibia | Tanzania |
| Burma/Myanmar | Guyana | Nauru | Thailand |
| Burundi | Haiti | Nepal | Togo |
| Cambodia | India | Niger | Tonga |
| Cameroon | Indonesia | Nigeria | Tunisia |
| Cape Verde | Iran | North Korea | Turkey |
| Central African Republic | Iraq | Oman | Turkmenistan |
| Chad | Jamaica | Pakistan | Tuvalu |
| China | Jordan | Palau | Uganda |
| Colombia | Kazakhstan | Papua Newguinea | Ukraine |
| Comoros | Kenya | Peru | Uzbekistan |
| Congo | Kiribati | Philippines | Vietnam |
| Cote d’Ivoire | Kuwait | Qatar | Yemen |
| Cuba | Kyrgyzstan | Russia | Zambia |
| Democratic Republic of Congo | Laos | Rwanda | Zimbabwe |
| | Lebanon | Sao Tome And Principe | |

Entities and territorial authorities not recognised as States by at least one Member State

Kosovo
Palestinian Authority

Special Administrative Regions of the People’s Republic of China

Hong Kong S.A.R.⁶
Macao S.A.R.⁷

British citizens who are not nationals of the United Kingdom of Great Britain and Northern Ireland for the purposes of Union law

British nationals (Overseas)
British overseas territories citizens (BOTC)
British overseas citizens (BOC)
British protected persons (BPP)
British subjects (BS)

Entities and territorial authorities not recognised as States by at least one Member State

Taiwan

Visa for a stay of up to 90 days: single entry. Whether you need a Schengen visa or not depends on your nationality.

The visa exemption applies only to holders of a “Hong Kong Special Administrative Region” passport.

The visa exemption applies only to holders of a “Região Administrativa Especial de Macau” passport.

Countries whose nationals are exempt from that requirement

Albania
Andorra
Antigua And Barbuda
Argentina
Australia
Bahamas
Barbados
Bosnia And Herzegovina
Brazil
Brunei
Darussalam
Canada
Chile
Costa Rica
Dominica
El Salvador
Former Yugoslav Republic of Macedonia
Grenada
Guatemala
Holy See (State Of The Vatican)
Honduras
Israel
Japan
Malaysia
Mauritius
Mexico
Moldova
Republic Of Monaco
Montenegro
Newzealand
Nicaragua
Panama
Paraguay
Samoa
San Marino
Seychelles
Serbia
Singapore
South Korea
St Kitts And Nevis
St Lucia
St Vincent And The Grenadines
Timor-Leste
Trinidad And Tobago
United Arab Emirates
United States Of America
Uruguay
Vanuatu
Venezuela

Exhibitions organizers, welcome to Maastricht, home to TEFAF Maastricht for over 30 years!

Maastricht is the Netherlands' most European city. You can feel it, you can see it, and you can taste it! It's a place with a unique energy that you won't experience anywhere else in the Netherlands.

www.mecc.nl

maastricht:



Gemeente Maastricht

provincie limburg



TEFAF

Overall design: Zuiderlicht, Maastricht
Photography: Eef Bongers, Lorraine Bodewes, Philip Driessen, Marcel van Hoorn, iStock, Morel fotografie, Photostique.com, Hugo Thomassen, Guy van Grinsven/ Studiopress, Verbruggen Photography, Roy Wanders

MECC Maastricht

Oana Cipca
Business Development Manager Exhibitions
o.cipca@mecc.nl
+31 6 20 88 61 35
www.mecc.nl

