



ASUS **Education** Portfolio

A NEW ERA
OF LEARNING



ASUS Business 
EDUCATION

TRENDS AND CHALLENGES

Technology is rapidly changing the way students learn and the way educators teach in the 21st century. Below are several trends and recent challenges that face modern education institutions. Education administrators increasingly require innovative education solutions to adapt to change, and ASUS provides the education solutions to overcome these challenges, harness trends and empower students, educators and learning institutions.

Remote learning

As the COVID-19 pandemic continues, research shows that over 1.2 billion children around the world are out of the classroom¹. In 2020, many schools are resorting to remote learning, which means students of all ages are relying on digital platforms for learning.

Mobility

In the age of wireless internet and mobile devices, students around the world are able to access course materials anytime and anywhere. Additionally, out-of-school learning opportunities such as field trips and workshops provide students with hands-on, practical learning experiences.

Augmented Reality and Virtual Reality

According to a report by Goldman Sachs, global revenue for VR and AR educational software is expected to reach \$700 million by 2025². As gamified AR and VR learning platforms grow in number, more and more students are engaging in interactive, immersive experiences that encourage greater understanding by providing opportunities to apply concepts.

Cloud Collaborative Learning

Online learning programs and value-added learning software applications such as Google Classroom and Blackboard Learn are becoming more popular and widely utilized. Educators are increasingly likely to use these technologies to promote teamwork and collaboration on projects for student-led learning.

Cybersecurity

In 2020, the education sector has been a major target for cybercriminals. Hacking, malware and phishing threats continue to increase the risk of financial loss and system disruption. Therefore, an important question for each network administrator to consider is how to upgrade the school's system to keep data safe and protect students from inappropriate or harmful content online.

1. <https://www.weforum.org/agenda/2020/04/coronavirus-education-global-covid19-online-digital-learning/>

2. <https://www.goldmansachs.com/insights/pages/technology-driving-innovation-folder/virtual-and-augmented-reality/report.pdf>

WHY ASUS?

ASUS is dedicated to solving the unique challenges facing today's students and educators. We are here to help cultivate the minds of the next generation with a comprehensive, student-centered product portfolio that includes Chromebooks, Windows-based laptops, desktops, AiO PCs and software to enable progressive and innovative learning in an ever-changing world.



Durability & reliability

Tough enough to endure everyday accidents

ASUS education devices have the durability to withstand the accidents that can occur in the classroom or at home. ASUS Chromebooks and Windows-based laptops feature a wrap-around rubber bumper¹, a spill-resistant keyboard¹ and an ultra-tough hinge¹. Built to surpass the demanding military-grade MIL-STD-810G durability standards, these devices are designed to endure the stresses and strains of everyday use.



Mobility

Empower remote learning with tools

ASUS combines powerful connectivity with long battery life² for seamless learning and portability that empowers students and educators to access course materials anytime, anywhere. ASUS also supports cloud-based learning tools, such as Google's G Suite, Microsoft Office 365 and Microsoft Teams, to ensure optimum e-learning experiences.



Innovation

Unleash student creativity with the power of technology

The Chromebook Flip series features an innovative 360° ErgoLift hinge¹ for flexible learning and a user-friendly stylus¹ for easily and intuitively noting ideas.



Security

Ultimate protection with multilayered defense

ASUS products provide comprehensive hardware- and software-based security features—ranging from physical hardware protection to identity security—to protect against unauthorized access and cyberattacks.



IT Management

Less downtime, more learning time

ASUS is your school's partner for efficient device and classroom technology management. Routine device maintenance is simple with software such as ASUS Control Center and AI Recovery¹, and the tool-free¹, modular design¹ of ASUS laptops make upkeep easy. Google Classroom, Microsoft Whiteboard and Windows Autopilot streamline classroom management, as teachers can easily track student progress and work together with students.



Premium Support & Service

Education with peace of mind

ASUS premium care services go beyond the standard warranty to assure maximum protection with minimal effort. The MyASUS software service helps you to quickly contact ASUS after-sales customer service online for support, providing diagnostic help and effective solutions, including in Windows Recovery Environment (WinRE).

1. Specifications may vary by model.

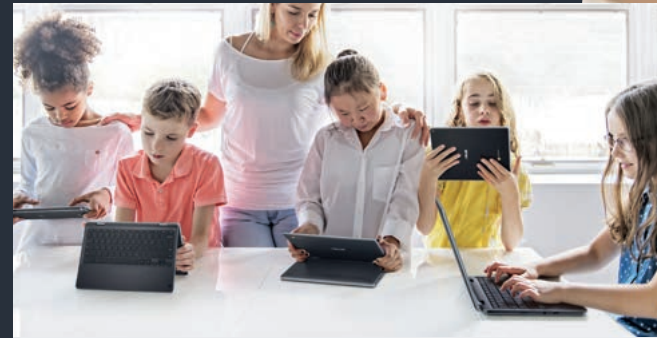
2. Actual battery life depends on usage, specifications, applications and environment, among other factors.

BENEFITS FOR ALL



Students

ASUS solutions help prepare students for the future with innovative learning experiences. With ASUS technology, students can access online learning resources, engage in interactive and collaborative projects, enjoy immersive learning, and develop skills that are essential in the digital age.



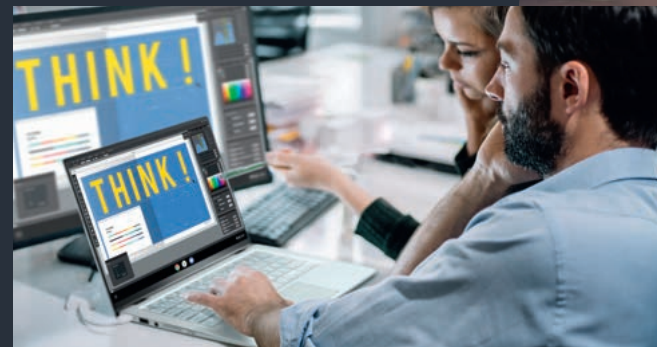
Teachers

ASUS innovations empower teachers to increase student engagement, enhance students' skills, and encourage collaboration. With easy management solutions, teachers can keep classrooms organized and spend more time teaching.



IT administrators

ASUS solutions help IT administrators improve efficiency and minimize downtime, so learning can continue uninterrupted. Our hardware and software features help IT administrators ensure that all data and information is controlled and secure. IT administrators can also enjoy fast response times and consistent quality of after-sales service.



School Administrators

Schools are under considerable pressure to swiftly invest in educational technology that supports virtual and remote learning. ASUS solutions enable school administrators to effectively improve teaching productivity and learning outcomes while keeping IT management costs low.





BENEFITS OF CHROMEBOOKS

Unlock limitless learning with ASUS Chromebooks

ASUS Chromebooks make learning more effective and engaging.

Some key features include:

- Google Classroom assists teachers with class management
- The Google Admin Console centrally manages hundreds of thousands of devices
- Google Play Store allows you to discover millions of apps
- G Suite provides productivity apps that keep students connected and empower students to collaborate and communicate
- Learning materials can be accessed on any device, from anywhere, online or offline
- Simplified deployment gives IT administrators access to device policies
- 24/7 IT admin support at no additional cost
- Advanced security and automatic updates ensure that school data is always safe and secure



CHROMEBOOK

With the right tools, students can achieve any goal. In partnership with Google, ASUS has created Chromebooks with versatile features that teachers and students can use to create and collaborate.



US MIL-STD 810G
military grade
durability



Splash-proof
keyboard



All- rounded rubber
edges for durability



Modular product
design



Stylus support



Anti-glare display



C214

- Intel® Celeron® N4020 Processor
- Chrome OS keeps it new and fast
- US MIL-STD 810G military-grade standard
- Weights starting at 1.28 kg¹ with rubberized chassis design
- Up to 16GB LPDDR4 2400MHz RAM
- 11.6" HD (1366 x 768), multi-touch with Wacom® EMR™ support, Corning® Gorilla® Glass 3 display
- 2 x USB 3.2 Gen 1 Type-C™ support display & support power delivery, 1 x USB 3.2 Type-A, and 1 x microSD card reader
- 50Wh battery with up to 12 hours² battery life
- Fast and stable Wi-Fi: Integrated 802.11a/b/g/n/ac (2x2)



C403

- Intel® Celeron® N3350 Processor
- Chrome OS keeps it new and fast
- US MIL-STD 810G military-grade standard
- Up to 4 GB LPDDR4 2400MHz RAM
- 14.0" HD (1366x768), Anti-Glare Panel with 45% NTSC
- 2 x Type-C™ USB 3.2 Gen 1 with display and power delivery support
- 2 x Type-A USB 3.2 Gen 1
- 46 Wh battery with up to 11 hours² battery life
- Weights starting at 1.7 kg¹ with rubberized chassis design
- 180 lay-flat hinge for stress-free sharing



C204

- Intel® Celeron® N4020 Processor
- Chrome OS keeps it new and fast
- US MIL-STD 810G military-grade standard
- Weights starting at 1.19 kg¹ with rubberized chassis design
- Up to 4GB LPDDR4 2400MHz RAM
- 11.6" HD (1366 x 768), 250nits, NTSC: 45%, Anti-glare,
- Optional touch panel, Wide view display
- 2 x USB 3.2 Gen1 Type-C™ support display & support power delivery, 2 x USB 3.2 Type-A, and 1 x microSD card reader
- 50Wh battery with up to 11 hours² battery life
- 180° lay-flat hinge for stress-free sharing



C202

- Media Tek MT8173C Processor
- Chrome OS keeps it new and fast
- US MIL-STD 810G military-grade standard
- 11.6" HD (1366x768) anti-glare display panel
- 1x USB Type-C™ (support DisplayPort and power delivery), 1 x USB Type-A, 1x HDMI, and a SD card
- 180° lay-flat hinge for stress-free sharing
- All-round rubber bumper around 4 exterior edges
- Spill-resistant and tamper-resistant keyboard
- Up to 10 hours² battery life



CZ1100

- 11.6" touch or non-touch display with clamshell and Flip design
- MediaTek 8183 Processor
- Up to 13hr battery life
- 5MP world-facing camera (on flip device)
- Anti-bacteria on C Part to inhibit the growth of bacteria by over 99% over a 24-hour period
- Ultra-tough military-grade durability, rubber bumper around 4 exterior edges and spill-resistant keyboard
- Hinge is tested to withstand 50,000 open-and-close cycles
- Versatile IO ports : 1 x USB Type-C (support DisplayPort and power delivery), 1 x USB Type-A, 1 x micro SD card, 1 x Audio Combo Jack and 1 x Kensington Lock

Chromebook

With the right tools, students can achieve any goal. In partnership with Google, ASUS has created Chromebooks with versatile features that teachers and students can use to create and collaborate.



NanoEdge Display



Thin and light



Stylus support



C433

- Intel® Core™ i5-8200Y / m3-8100Y processor
- Chrome OS keeps it new and fast
- 14" (16:9) Full HD (1920 x 1080) multi-touch four-sided NanoEdge display with 85% screen-to-body ratio
- Up to 8GB LPDDR3 1867MHz RAM
- Up to 128GB eMMC Storage
- 2 x USB 3.2 Gen 1 Type-C™ support display & support power delivery, 1 x USB 3.2 Type A, and 1 x microSD card reader
- Up to 10 hours¹ battery life
- 178° wide-view technology with optional touchscreen
- Weights starting at 1.5 kg² with stylish metallic design



C436

- Ultra-slim 14-inch screen in 13-inch chassis with with 360° ErgoLift hinge
- 4-sided NanoEdge display with 85% immersive vision
- Powered by up to the latest Intel® Core i7 processor, 16GB RAM and 512GB storage
- Up to 12 hours battery life
- Quad-speakers certified by Harman/Kardon
- The first Chromebook with Wi-Fi 6 2x2 and ASUS Wi-Fi Master technology
- Fingerprint module integrated and optional USI stylus support
- 1.1kg light and 13.7mm thin



C423

- Up to Intel® Pentium® Quad-Core N4200 processor
- Chrome OS keeps it new and fast
- 14.0" (3:2) LED-backlit HD or FHD NanoEdge display with 78% screen-to-body ratio
- Up to 64 GB eMMC Storage
- 2 x USB 3.2 Gen 1 Type-A, 2 x USB 3.2 Gen 1 Type-C™ with display and power delivery support
- Up to 10 hours¹ battery life
- Weights starting at 1.33 kg² with stylish metallic design
- 180 degree lay-flat hinge
- Optional touchscreen



C523

- Up to Intel® Pentium® Quad-Core N4200 processor
- Chrome OS keeps it new and fast
- 15.6" HD or FHD NanoEdge display with 80% screen-to-body ratio
- Up to 64 GB eMMC Storage
- 2 x USB 3.2 Gen 1 Type-A, 2 x USB 3.2 Gen 1 Type-C™ with display and power delivery support
- Up to 10 hours¹ battery life
- Weights starting at 1.43 kg² with stylish metallic design
- 180 degree lay-flat hinge
- Optional touchscreen

1. Specifications may vary by region and country.

2. Actual battery life depends on usage, specifications, applications and environment, among other factors.

1. Actual battery life depends on usage, specifications, applications and environment, among other factors.

2. Specifications may vary by region and country.

LITTLE LONDON CASE STUDY



ASUS was thrilled to work with and supply ASUS C202 Chromebooks to Little London Primary School in Leeds on this truly inspiring project. The Schools mission was to supply a Chromebook to every pupil in the School and to enable them to use a device both at School and also at home. Before the students received the ASUS Chromebooks, very few had access to a computer or Internet access.

Tell us a little bit about yourself and your school

My name is Jill Wood and I am the Head teacher of Little London, a three form entry primary school situated right in the heart of Leeds. A wonderful area to work but an area with lots of challenges. We have a very diverse population here at Little London with over 82 languages spoken across the school and wonderful parents who want the best for their children.

What were you main motivations in sourcing a new IT solution?

We have been trying to increase our digital ability across the school, to make sure technology was playing the right sort of part in our students' education. We were also uncomfortable with the fact that the children were only accessing technology on their set timetabled lessons so we wanted to see technology becoming a part of their everyday learning, whilst in school as well as at home.

What did you do to find the right device/supplier?

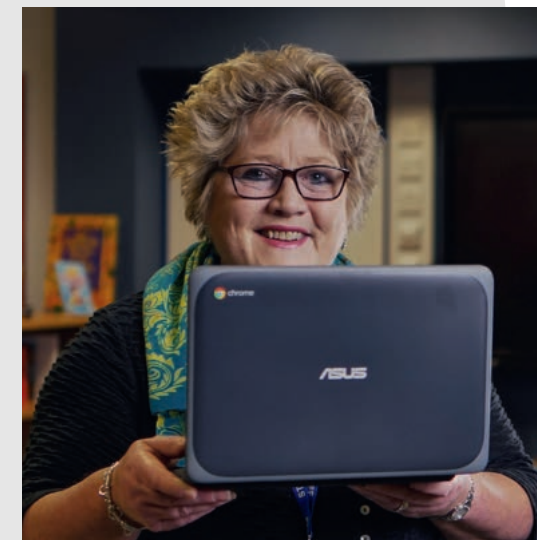
We had a long conversation with our IT support in school, a wonderful company called Next Generation IT. We expressed our thoughts around implementing a solution to the school and they took that all away and ultimately suggested the ASUS C202 Chromebook. What swayed us on this decision was that this device seemed to be very robust, with a simplified operating system for the students as well as it being sustainable for the next few years without a need to refresh the device.

What has been the initial feedback from students and teachers?

The children were incredibly excited and they love the fact that they can take the device home and continue learning when not at school. Teachers have also been really positive about the Chromebooks and they have seen a massive increase in work from many of our children.

How has this new solution impacted your school?

The implementation of the Chromebooks has been a real positive for the school, we have seen those who wrote very little in books now writing a lot on their Chromebook, which is great to see. Everything is very secure on the devices so there is no risk of the children accessing all parts of internet and the children are now finding learning fun! So we feel all our children, all of our children are now part of the future.



Jill Wood, Headteacher



BENEFITS OF WINDOWS-BASED LAPTOPS

Unlock limitless learning with ASUS Windows-based laptops

ASUS Windows 10 laptops are affordable and easy to manage. With technology that transforms classroom time, they allow educators to focus on delivering personalized learning experiences that help enable better learning outcomes. ASUS Windows 10 laptops empower students to navigate their learning and develop social and emotional skills, with free tools available to deliver tailored learning in key subjects like reading, writing, and mathematics.

Moving to a virtual classroom

Creating an online classroom is an important step in moving to a remote learning environment. Microsoft Teams for Education provides an online classroom so students and teachers can find new ways to continue to focus on learning — free for schools .

Empowering the students of today to create the world of tomorrow with fast and hardworking features, and new ways to interact with your Windows 10 laptop.

With Windows Autopilot, you can quickly transform a brand new device into a classroom-ready state—or reset existing devices to remove apps, settings and personal files—without physically having to touch the device.

Windows Hello

is the password-free sign-in that gives you the fastest, most secure way to unlock your Windows devices using facial recognition, fingerprint, or companion devices

Microsoft Whiteboard

is a collaborative, digital whiteboard that makes it easy for your class to come together to share ideas in real time.



WINDOWS-BASED LAPTOPS

With the right tools, students can achieve any goal. ASUS has created Windows-based laptops with versatile features that teachers and students can use to create and collaborate.



MIL-STD-810G
military-grade
durability



Splash-proof
keyboard



AI Noise-Canceling
technology



Anti-glare display



Long-lasting
battery life



W202

- Up to Intel® Celeron® Dual-Core N3350 Processor
- Windows 10 Pro
- 11.6" (16:9) LED-backlit HD (1366x768) anti-glare display
- 4GB LPDDR4 and 64GB EMMC
- All-round rubber bumper around 4 exterior edges
- Spill-resistant and tamper-resistant keyboard
- Ultratough: military-grade durability
- Up to 11 hours¹ battery life
- Versatile IO ports : 2 x USB Type-A, 1 x HDMI and a micro SD card
- Up to Wi-Fi 5 (802.11ac) + Bluetooth 4.1
- A modular construction that allows key components to be replaced in minutes using simple tools



ASUS E210/E410

- 11.6" and 14" with Celeron/Pentium CPU
- 180 degree hinge design for easy sharing
- Innovative NumberPad for convenient numerical input
- Quiet fanless design
- 1.2kg light, 16.9mm thin



ASUS P1411/P1511

- 14" / 15" FHD with up to Intel® Core™ i7-1065G7 processor
- Up to MX330 discrete graphics and up to 1TB HDD + 1TB SSD
- Slim bezel, less than 7 mm with screen-to-body ratio 82%
- ASUS Splendid technology with tur2Life video, enhance 150% of the contrast
- Fingerprint sensor support
- 1.6 kg light and 19.9 mm thin



TP401

- 14-inch Full HD display in a typical 13-inch laptop frame
- Up to Intel® Pentium N5030 processor
- Up to 8GB DDR4 and up to 256GB SSD storage
- Durable 360° hinge
- Support active ASUS Pen (with battery) for intuitive input
- 8mm NanoEdge slim bezel with 74.3% screen to body ratio
- 1.5kg light and 15.4mm thin



BR1100

- 11.6 inch anti-glare display
- Up to 11hrs battery life
- Anti-bacteria on C Part to indirectly protect children's health
- Garaged stylus can be used up to 45 min. once charged for 15 sec. (Optional)
- LTE connection to access the Internet wherever you are (Optional)
- All-round rubber bumper around 4 exterior edges and reinforced brackets on I/O ports
- Versatile IO ports : RJ45, 1XUSB 3.2 Gen2 Type-C with charging, 1XUSB 3.2 Gen1 Type-A, 1XUSB 2.0 Type A, HDMI, Micro SD Card
- Modular construction allows key components to be replaced in minutes by using simple tools



ExpertBook B1400/B1500

- Intel® Core™ i3-1115G4 / i5-1135G7 / i7-1165G7
- Windows 10 Pro
- 14"/15.6" (16:9) Full HD, three-sided NanoEdge display with 84% screen-to body ratio
- Up to NVIDIA® GeForce® MX330
- DDR4 4G/8G/16G onboard + 1 DIMM
- Up to 2TB HDD + 1TB PCIe SSD
- New Military Grade MIL-STD 810H
- Comprehensive I/O ports : 3 x USB Type-A ports, 1x Thunderbolt 4 (Thunderbolt support Power Delivery/DisplayPort/USB 4), 1x D-SUB, HDMI, 1x RJ45(LAN), 1*Kensington lock
- Wi-Fi 6 (802.11ax) with Wi-Fi Master technology
- Only 1.45 kg² light with aluminum alloy top case, and 19.2 mm thin

1. Actual battery life depends on usage, specifications, applications and environment, among other factors.
2. Specifications may vary by region and country.

GAMING IN EDUCATION

Gaming has taken the world by storm. Not only with the ever growing number of Esports tournaments around the world but also how it is now perceived in education. There is now plenty of evidence backing the benefits of extracurricular activities for students such as Esports.

*Studies have shown that those involved in extracurricular activities have become more successful in a number of ways. These include higher graduation rates, improved grades in mathematics and reading and higher attendance. Esports has also been proven to help boost students' strategic thinking, teamwork, communication, leadership and social skills.

*Source: <https://nces.ed.gov/pubs95/web/95741.asp>



ROG Strix G17 – G713IH-HX009T

- 15.6" FHD 240Hz display
- NVIDIA® GeForce RTX™ 3060 graphics
- Intel® Core™ i7-11370H Processor
- 1TB SSD & 16GB RAM
- Upgraded cooling solutions for peak performance



ASUS TUF Dash F15 – FX516PM-AZ003T

- 15.6" FHD 240Hz display
- NVIDIA® GeForce RTX™ 3060 graphics
- Intel® Core™ i7-11370H Processor
- 1TB SSD & 16GB RAM
- Upgraded cooling solutions for peak performance



ROG Strix GA15 – G15DH-UK088T

- AMD Ryzen™ 5-3600X Processor
- NVIDIA® GeForce GTX™ 1660 Ti graphics
- 1TB SSD & 8GB RAM
- Transparent side panel and RGB lighting
- Keyboard and mouse included



ROG Zephyrus G15 – GA503QS-HQ003T

- 15.6" QHD 165Hz display
- NVIDIA® GeForce RTX™ 3080 graphics
- AMD Ryzen™ 9 5900HS Processor
- 1TB SSD & 32GB RAM
- Shimmer effect lid



ROG Strix SCAR 17 – G733QR-HG001T

- 17.3" FHD 300Hz display
- NVIDIA® GeForce RTX™ 3070 graphics
- AMD Ryzen™ 7 5800H Processor
- 1TB SSD & 16GB RAM
- RGB keyboard and lightbar



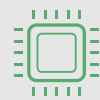
ROG Strix GT35 – G35CZ-UK007T

- NVIDIA® GeForce RTX™ 3070 graphics
- Intel® Core™ i7-10700KF Processor
- 256GB SSD + 2TB HDD storage
- 16GB RAM
- Transparent side panel and RGB lighting

DESKTOPS

Unlock limitless learning with ASUS desktops

ASUS offers a wide range of desktop solutions that cater to the diverse needs of teachers and students, providing features to ensure rich learning experiences.



ASUS World's No. 1 motherboard



100% solid capacitors



Full expandability



Rock-solid security



Designed for tool-free upgrading and servicing



ExpertCenter D500 series

- Up to Intel® Core™ i7 processor
- Intel® H310C chipset
- Windows 10 Pro / Home
- Intel® HD Graphics
- 2 x DIMM SLOT, DDR4 2666MHz, support max 32GB
- Up to 2TB HDD, up to 512GB
- Kensington lock

AIO

Unlock limitless learning with ASUS AiO PCs

ASUS All-in-One PCs feature space-saving design, a stunning NanoEdge display, a perfectly balanced hinge, and powerful performance — all perfectly suited to a variety of student needs and learning environments.



Best-in-class performance



Powerful speakers



Dual storage



NanoEdge display



Fast connectivity



ASUS AiO V241

- Up to Intel® Core™ i7-8565U processor
- Windows 10 Pro
- 23.8" 16:9 Full HD (1920x1080) anti-glare panel with slim bezel and up to 88% screen-to-body ratio
- NVIDIA® GeForce® MX130, 2GB GDDR3
- Up to 16GB DDR4 RAM
- Up to 1TB HDD + 512GB PCIe SSD
- ASUS Splendid & Tru2Life Video-vibrant, vivid display
- Wide 100% sRGB gamut for vivid and realistic-looking colors
- SonicMaster-ultimate audio experience with huge stereo sound with two stereo speakers
- Optional multi-touchscreen



ASUS AiO 22 V222

- Up to 10th gen Intel® Core™ i7-10510U processor
- Windows 10 Pro
- 21.5" 16:9 Full HD (1920 x 1080) NanoEdge Panel with slim bezel and up to 87% screen-to-body ratio
- Up to NVIDIA® GeForce™ MX110, GDDR5 2G VRAM
- Up to 8GB DDR4 2400Mhz
- Up to 1TB HDD + 512GB PCIe SSD
- ASUS Splendid & Tru2Life Video-vibrant, vivid display
- Wide 100% sRGB gamut for vivid and realistic-looking colors
- SonicMaster-ultimate audio experience with huge stereo sound with two 3W stereo speakers
- Optional multi-touchscreen

DISPLAYS

ASUS monitors boast a range of sizes for various scenarios and specs for all users. Including full HD resolution, high refresh rates and low blue light filters to protect your eyes.



MINI PC'S & MEETING HARDWARE

ASUS Mini PC's and meeting hardware is versatile and smart, allowing for quick and seamless functionality, with the added bonus of being discrete in your workplace.



ASUS BE24EQK

- 23.8" Full HD frameless IPS panel with wide viewing angles
- Integrated Full HD webcam, mic array and stereo speakers
- DisplayPort, HDMI, D-sub, Audio in, Earphone jack
- Low Blue light filter for comfortable viewing



ASUS BE24EQSB

- 23.8" Full HD frameless IPS panel with wide viewing angles
- DisplayPort, HDMI, D-sub, Audio in, Earphone jack and four USB 3.0 ports
- Ergonomic design with +35° ~ -5° tilt, ±180° swivel, ±90° pivot and 130mm height adjustments
- Low Blue light filter for comfortable viewing



ASUS VP229HE

- 21.5" Full HD LED backlight display with wide viewing angles
- Up to 75Hz refresh rate with Adaptive-Sync/FreeSync™ technology
- Extensive connectivity including HDMI and D-sub ports
- Low Blue light filter for comfortable viewing



Chromebox 4

- Powered by 10th Generation Intel® Core™ or Celeron® processors.
- Supports up to three 4K displays with dual HDMI 2.0 and USB-C®.
- Extensively tested for 24/7 reliability to ensure long-term dependability.
- Locking VESA mount kit included for a tidy, clutter-free workspace.



ASUS Google Meet Hardware

- Versatile smart, one-touch video-conferencing solution with HD visuals
- Three hardware kits in a pack to suit any meeting room
- Powered by an Intel® Core™ i7 processor
- Includes Google Meet Speakermic for 360 sound, touchscreen control panel or remote control and UHD camera*
- *Large Room Kits are not supplied with a camera. A PTZ Pro 2 can be purchased separately.



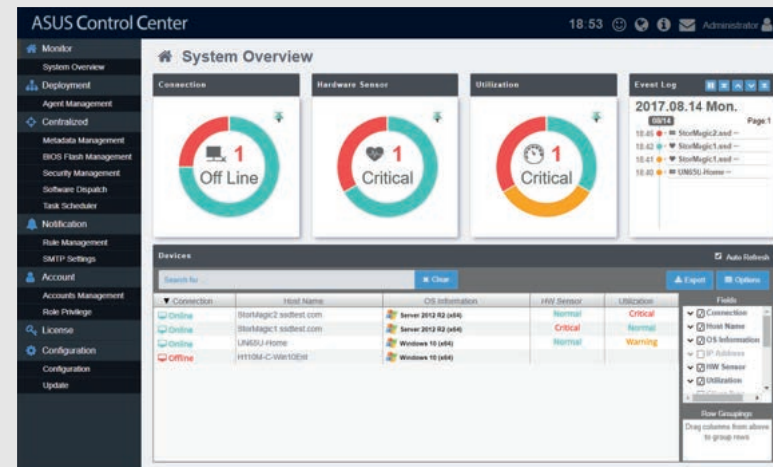
ASUS PN Series Mini PCs

- Powered by 10th Generation Intel® Core™, Pentium or Celeron® processors. AMD Ryzen™ 4000 Series Mobile Processors also available.
- Supports up to four 4K displays
- Modern space saving design, measuring 115x115x49mm (0.62l)
- Extensively tested for 24/7 reliability to ensure long-term dependability.
- Locking VESA mount kit included for a tidy, clutter-free workspace.

SOFTWARE

Unlock limitless learning with ASUS software

ASUS software simplifies asset-management processes for IT staff, as well as for students and educators.



ASUS Control Center

Comprehensive centralized IT management

ASUS Control Center is a centralized IT management suite designed to enhance productivity and security by offering a comprehensive set of controls via a user-friendly interface.



HARDWARE & SOFTWARE MONITORING



ADVANCE SEARCH AND GROUPING



TASK SCHEDULER



EFFICIENT ENERGY CONTROL



ENHANCE SECURITY



INTUITIVE USER INTERFACE

ASUS Business Manager

Simple PC management

ASUS Business Manager is a PC-based platform consisting of hardware and firmware that provides unique security and productivity capabilities for educators and students.



SYSTEM BACKTRACK



FILE SHREDDER



MY LOGO



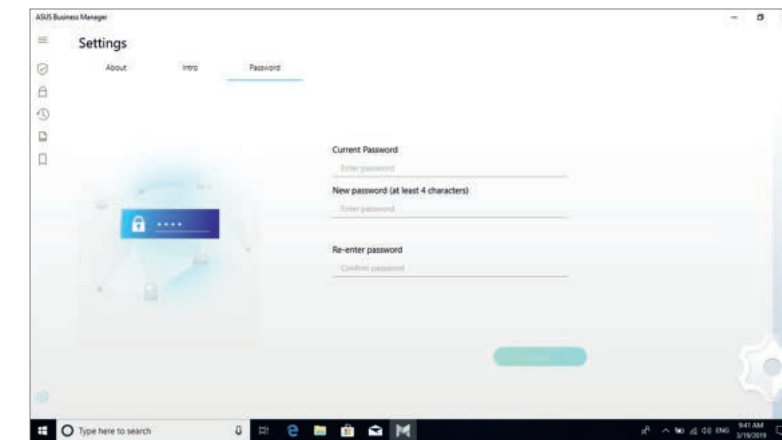
DEVICE LOCK



SECURE DRIVE



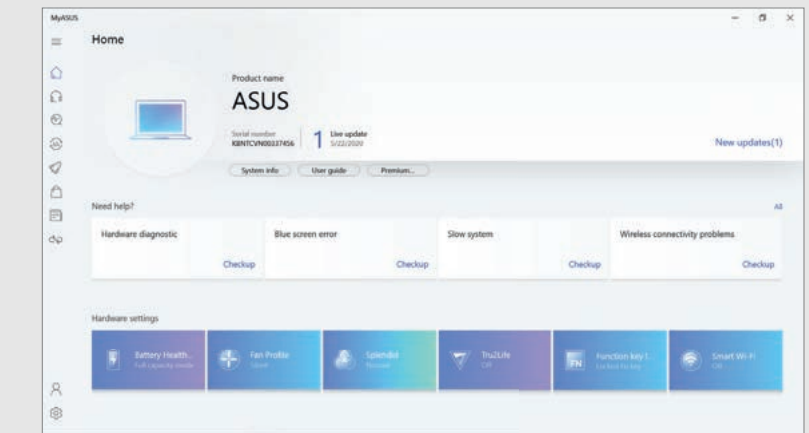
SYSTEM RESTRICTION



MyASUS

One-stop portal of ASUS-developed software tools and services

MyASUS is an exclusive app that helps you easily communicate with customer service, monitor repair status and access product instruction manuals, among other capabilities.



- System Diagnosis
- Hardware settings
- Customer service
- ASUS AppDeals
- Link to MyASUS



AI Recovery

Effectively set up all devices

AI Recovery is software that helps IT administrators create e-classrooms and allows for easy deployment, set-up and recovery of all devices.



ASUS Cloud

Ultimate online resource management

ASUS Cloud is a platform that integrates with multiple learning applications, providing rich and active learning experiences for students while making class management easier for educators. It also allows students and educators to store and access all their learning materials, making sharing as effortless as ever.

ASUS PREMIUM CARE SERVICES

Hassle free, peace of mind for Education.

Asus premium care services go beyond standard warranty, to provide the assurance of maximum protection with minimal effort. It's the peace of mind you need so that you can get things done without compromising productivity or mobility.



MINIMISED
DOWNTIME



INCREASED
EFFICIENCY



REDUCED
COSTS



Comprehensive Support

Nobody knows your devices better than our own Asus hardware experts do. That is why they are only a phone call away to help you get the best out of your devices and assist you when you need support from trouble-shooting, diagnostics and more.



Warranty Extensions

Keep that peace of mind feeling going for up to 5 years¹, with an Asus extended warranty². Ideal if you are planning to deploy your products for a longer period.



Next Business Day (NBD) Repair

Minimise disruptions by investing in NBD service. Eliminate the hassle of laptop drop offs and pick-ups.



Laptop Accidental Damage Protection (ADP)

ADP gives you the assurance that should your laptop be subject to accidental damage from events such as liquid spills, electrical surges, drops and falls, you will be covered, with no excess to pay.



Keep My Drive

In the unlikely event that the original storage drive requires replacement, Keep My Drive allows you to retain the defective drive and receive a replacement, installed by an authorised Asus technician.



Battery Back Up

Extend the warranty of your battery to match the warranty of the laptop with Battery Back Up. You will be entitled to one battery replacement during the warranty period, as a result of any manufacturing defects.

1. Service and warranty coverage may vary depending on country and territory and may change without notice. Please check with your supplier for exact offers.
2. Must be purchased and activated within 90 days of your ASUS product purchase date.

ASUS EDUCATION ECOSYSTEM PARTNER

Pave the way for education with ASUS Ecosystem Partner



Microsoft

ASUS and Microsoft share the goal of empowering every student to reach his or her potential. With Windows Autopilot, IT administrators can quickly transform a new device to one that's classroom-ready, reset existing devices to remove apps, change settings, or access personal files — and they can do all of this remotely. The collaborative and digital Microsoft Whiteboard brings any class to life, allowing members to share ideas in real time. Microsoft Teams for Education plays a vital role in remote communication and class discussions in online classrooms.



Google

ASUS and Google are working together to make learning and collaborating easier. G Suite brings together all the favorite productivity apps of students, including Google Docs™, Google Slides™ and Hangouts™, to keep everyone connected and productive. Google Classroom gives teachers easy-to-use tools to instantly create classes, distribute assignments, provide feedback and monitor student progress. In addition, the automatic updates and multi-layered security offered by Chrome OS keeps data safe.



Intel

Equipped with powerful Intel® processors and Wi-Fi-enhancing technology, ASUS devices offer the very best in performance, efficiency and connectivity. ASUS devices powered by Intel provide performance and reliability to empower students with unparalleled learning tools and deliver seamless learning experiences.



AMD

Powered by AMD processors, ASUS education devices deliver optimized performance to meet the needs of students and educators alike, empowering students to reach their full potential.



Endless OS

The goal of Endless OS is to enable people to harness the power of computing, anywhere. ASUS and Endless OS combine hardware and software to make it easy and free to access valuable preloaded resources for students.

FOR MORE INFORMATION ABOUT ASUS EDUCATION SOLUTIONS,
PLEASE CONTACT US ON EDUCATION_UK@ASUS.COM



ASUS **Education** Portfolio



DOWNLOAD
ASUS BUSINESS SOLUTION K-12 EDUCATION
BROCHURE AT