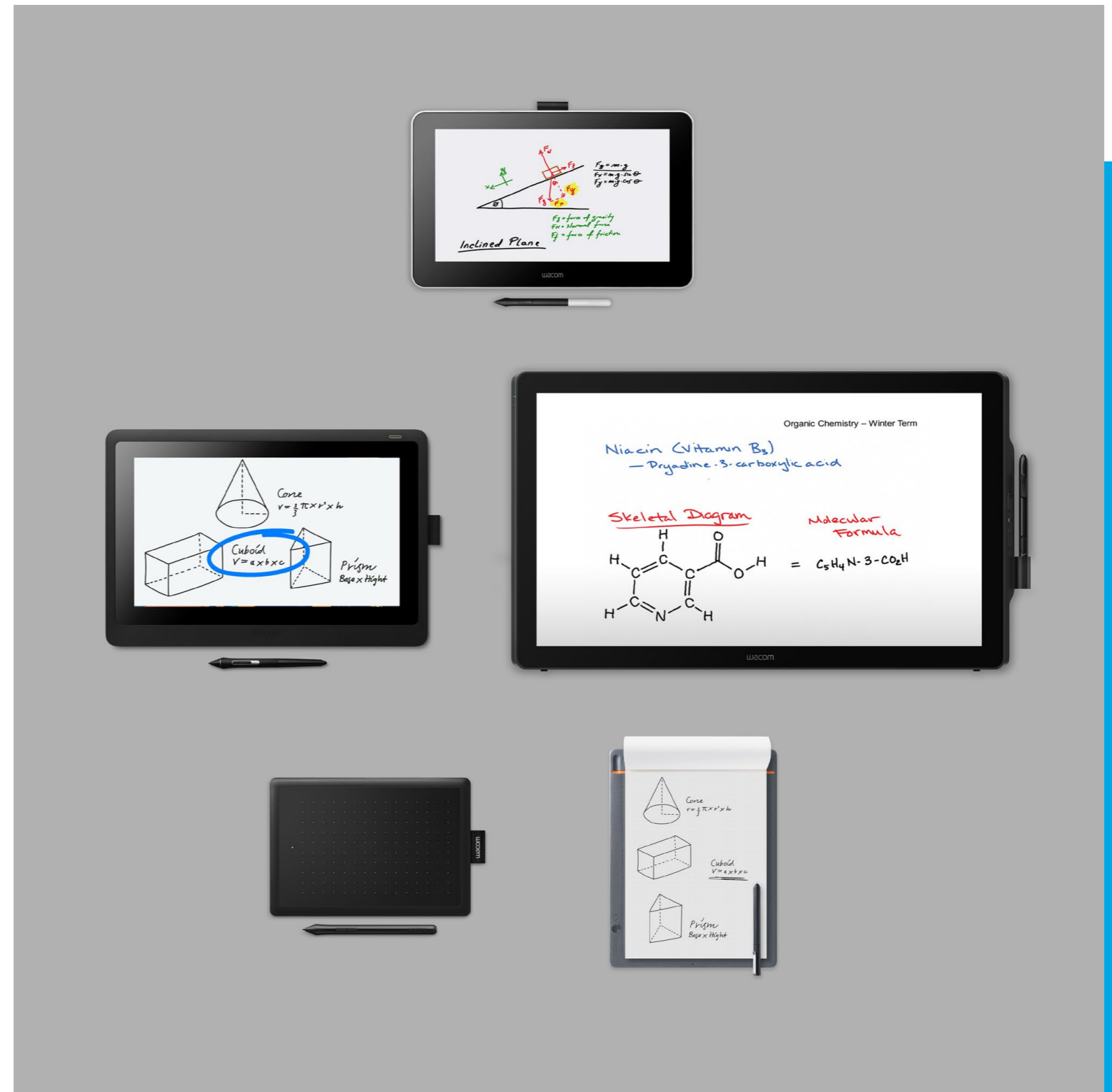


Product Portfolio

Transforming Digital Education

Wacom pen-enabled
devices for digital teaching
and learning

wacom®





Pen-Enabled Hardware Flexible Teaching Options

3 Learning made digital:
The pen still rules

4 Why Choose Wacom
Pen-enabled Devices?

5 Digital Teaching
Use Cases

6 Wacom for Education
Portfolio

7 **Pen Displays**

8 DTU-1141B

9 DTH-1152

10 Wacom One

11 Cintiq 16

12 Cintiq 22

13 DTK-2451/DTH-2452

14 **Pen Tablets**

15 One by Wacom

16 Wacom Intuos

17 **Bamboo SmartPads**

18 Bamboo Slate

19 Bamboo Folio

20 **Contact**

Rich education experiences improved learning outcomes

Digital technology has less impact if teachers are limited by a mouse and keyboard. Adding a digital pen gives educators freedom with a tool that's familiar and intuitive to use.

Interactive pen displays are the digital equivalent of a classroom whiteboard, letting teachers write annotations and drawings on presentations naturally while they teach. They easily add notes to resources, share learning materials, and write meaningful feedback on student assignments. The result is an efficient workflow for teachers, and better learning outcomes for students.

- **Intuitive**

Reduce the learning curve with a simple digital pen teachers can use with the software they already rely on.

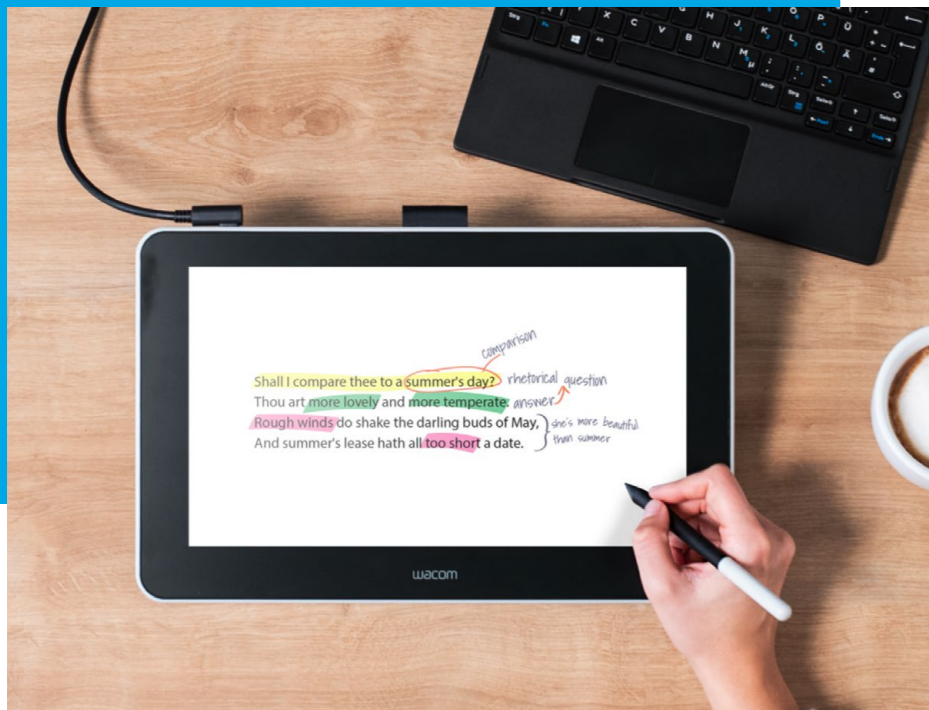
- **Versatile**

Our software-neutral digital pens work seamlessly with existing learning platforms and operating systems.

- **Better for learning**

Digital ink transforms learning materials into engaging, visually appealing resources with annotations, drawings, and modelled examples.





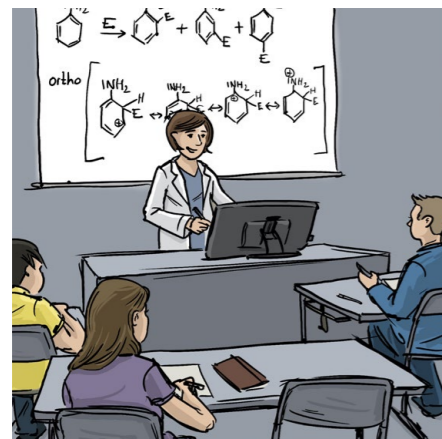
Why choose Wacom Pen-enabled Devices?

Wacom pen-enabled devices are an exciting yet cost-effective investment in making digital lessons really engaging for students at home and in the classroom.

- **Affordable digital transformation**
With minimal installation and ongoing management, Wacom is a cost-effective, low-maintenance choice.
- **Easy, flexible installation**
Wacom pen devices are built for hot swapping. No stopping, shutdown, or reboot needed.
- **As intuitive as pen and paper**
Wacom pens give educators a familiar writing tool they can naturally use with minimal training.
- **No technology lock-in**
Wacom devices work seamlessly with all programs that have digital ink capability, with no software buy-in.
- **Best user experience**
Teachers handwrite and draw effortlessly while facing the class, not the whiteboard.
- **Low maintenance**
With no operating system or updates, and just one driver for all tablets, Wacom devices keep working perfectly every time.
- **A device for every scenario**
Our wide range of pen screens, displays, tablets, and smart pads offer flexible choice.
- **Proven reliability**
Our devices are built for intensive use with a scratch-resistant screen and no recalibration needed.

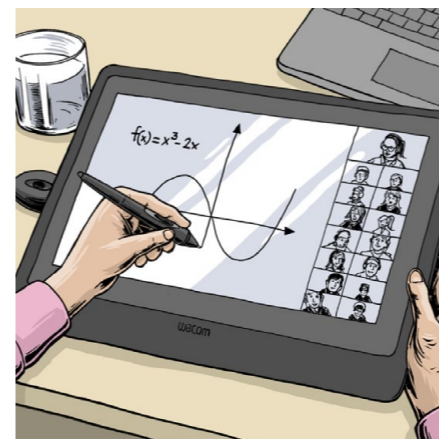
Digital Teaching Use Cases

Traditional classroom teaching has transformed to flexible and hybrid education models. With Wacom, educators have a tool they can use in every teaching scenario.



IN-CLASSROOM TEACHING

The teacher presenting uses a pen display linked to a computer and projector and is continuously facing the students. Classroom lectures are made engaging with the addition of digital ink to teaching slides.



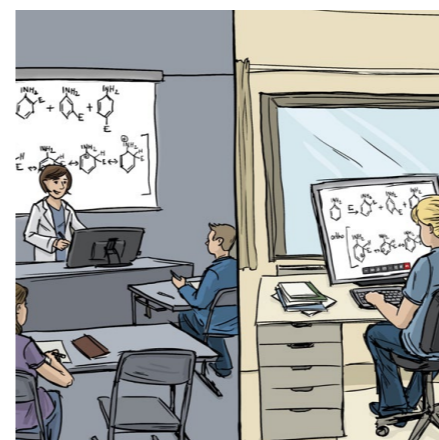
IN-CLASSROOM COLLABORATION

During lessons, students and teachers collaborate on digital whiteboard spaces and learning platforms. Students use pen tablets to handwrite ideas and answer questions. Rather than learning in isolation, lessons become interactive.



REMOTE TEACHING

Teachers add digital ink to presentations during live remote lessons shared via video conferencing software. Students annotate lesson resources and collaborate in shared spaces for interactive learning opportunities.



HYBRID TEACHING

Teachers switch between in-person and remote teaching, allowing learning across multiple sites. Remote learners follow the teacher's screen share, while on-campus students watch the same content through a projector.

Wacom for Education Portfolio

WITH DISPLAY



Pen Displays

Displays give teachers the pen and paper experience of a whiteboard they can use while facing students. The LCD screen sensors use patented EMR technology for perfect hand-eye coordination and precise writing and drawing.

WITHOUT DISPLAY



Pen Tablets

The most cost-effective way to use digital pen and ink without a second screen. Pen Tablets provide an opaque writing surface for teachers and students to write onto slideshows, PDFs, digital whiteboards, and every application with an ink option.

PAPER-BASED



Smartpads

Smartpads transform pen and paper into a presentation device by converting handwriting to digital files. Teachers write as they move around the classroom, and instantly project their notes onto a PC or mobile device, with the precision you expect from Wacom.

Wacom Pen Displays

Pen displays give teachers a second screen with a hardened surface to write on that can be projected in a classroom or shared remotely. Writing and drawings are accurate and precise. It acts as a digital whiteboard, letting the teacher face the class while writing, annotating, and drawing.



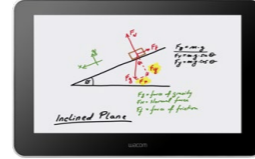
DTU-1141B

One simple cable connects this compact 10-inch HD pen display through a USB port with no AC charger required. It's designed for easy installation and storing. Comes with a battery-free pen.



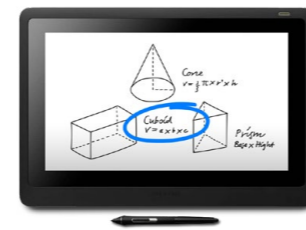
DTH-1152

This compact 10-inch display works in both portrait and landscape mode, allowing multi-touch zooming, scrolling, and navigating within apps. Comes with a battery-free pen and handy pen tether.



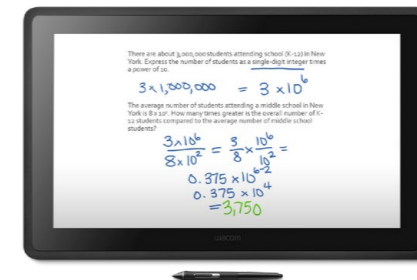
WACOM ONE

Our cost-effective adjustable pen display gives teachers a large and portable 13.3-inch Full HD second screen. The natural surface friction creates the feeling of writing on actual paper with the battery-free pen.



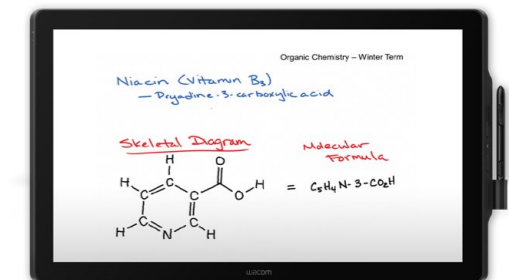
CINTIQ 16

This premium 15.6-inch pen display is ideal for busy classrooms and remote learning environments. It offers a Full HD anti-glare screen, digital pen, VESA mount, and optional adjustable stand.



CINTIQ 22

Our industry-leading 22-inch Full HD Pen Display is designed to be a replacement of a standard monitor. Comes complete with a highly accurate, battery-free pen and adjustable stand.



DTK-2451 / DTH-2452

This 24-inch HD pen display is designed for comfortable digital teaching with our largest writing space, video output, and battery-free pen. Choose the DTH-2452 for additional multi-touch functionality and intuitive navigation.

DTU-1141B

Our compact 10-inch Full HD pen display works through a simple USB connection. No AC charger and a battery-free pen make it ideal for moving between learning spaces.

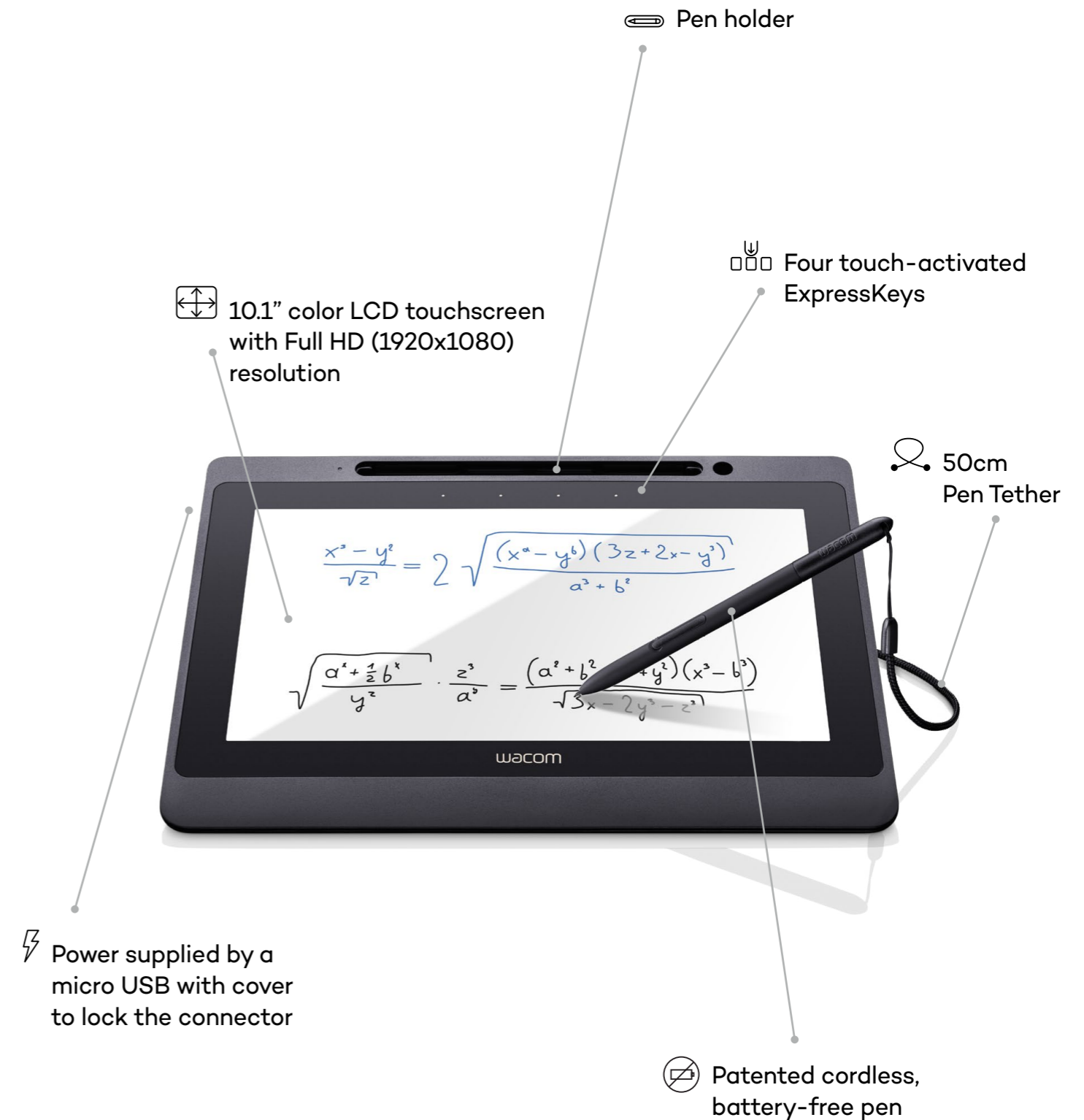
KEY FEATURES & BENEFITS

- **Portable design**
This lightweight pen display is easy to move between classrooms and store away.
- **Simple to use**
One single cable to connect, easy installation, and no need for an AC charger.
- **Accurate ink**
The compact screen allows precise digital ink with no recalibration needed.

IDEAL FOR

Flexible Classroom Spaces
The DTU-1141B conveniently plugs into a USB port, allowing teachers to move between classrooms and home offices. Its lightweight, compact design is made for easy storage.

Teachers draw, write, and note-take directly on the 10-inch Full HD LCD screen to add precise annotations to slideshows. Digital ink makes lessons engaging, interactive, and allows full eye contact with students.



DTH-1152

Our compact 10-inch Full HD touchscreen pen display gives educators a digital-ink enabled second screen for accurate writing, drawing, and annotation.

KEY FEATURES & BENEFITS

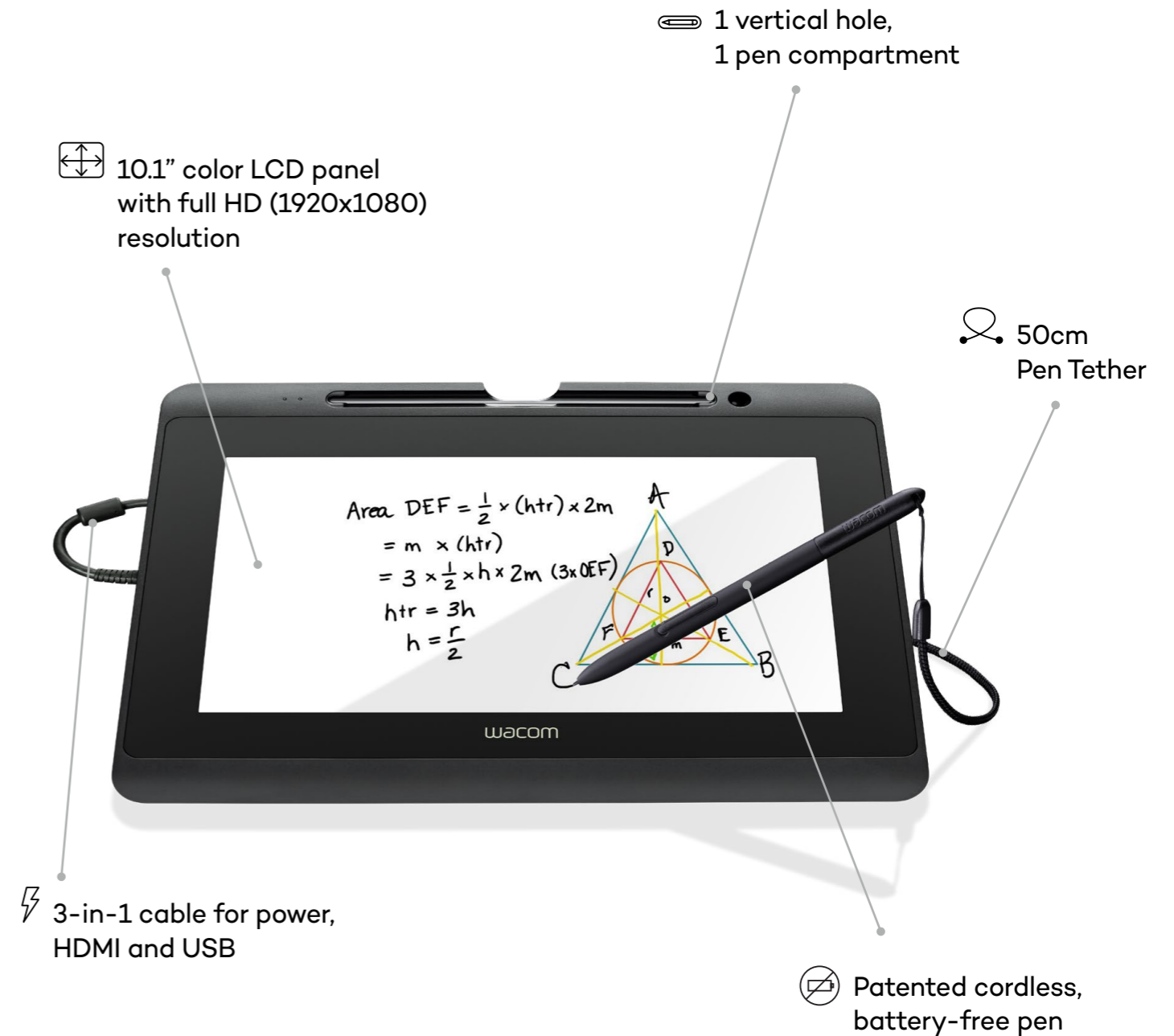
- **Touchscreen capability**
Offers easy, intuitive navigation using multi-touch zooming and scrolling.
- **Flexible use**
Works in both portrait and landscape mode to suit the software and teaching space.
- **Durable design**
Hardened, chip-resistant surface designed for daily use and easy storage.

IDEAL FOR

Extended Workspaces

Teachers attach the DTH-1152 pen screen to their device. They write digital ink annotations directly onto the 10-inch Full HD screen for engaging, collaborative lessons.

The compact, lightweight design offers the flexibility of both pen and touch input with a useful tether to keep the battery-free pen with the screen. Adding it to a classroom device creates an extended workspace with an intuitive second screen and easy touchscreen navigation.



Wacom One

A cost-effective pen display solution that recreates the feeling of writing on actual paper. Comes with a 13.3-inch Full HD screen and battery-free pen.

KEY FEATURES & BENEFITS

- Large Screen**
 The 13-inch full HD screen provides ample space for annotation and drawing.
- Realistic Feel**
 With natural surface friction, teachers have the feeling of writing on actual paper.
- Digital Ink**
 Accurate digital ink writing transforms lesson materials and presentations.

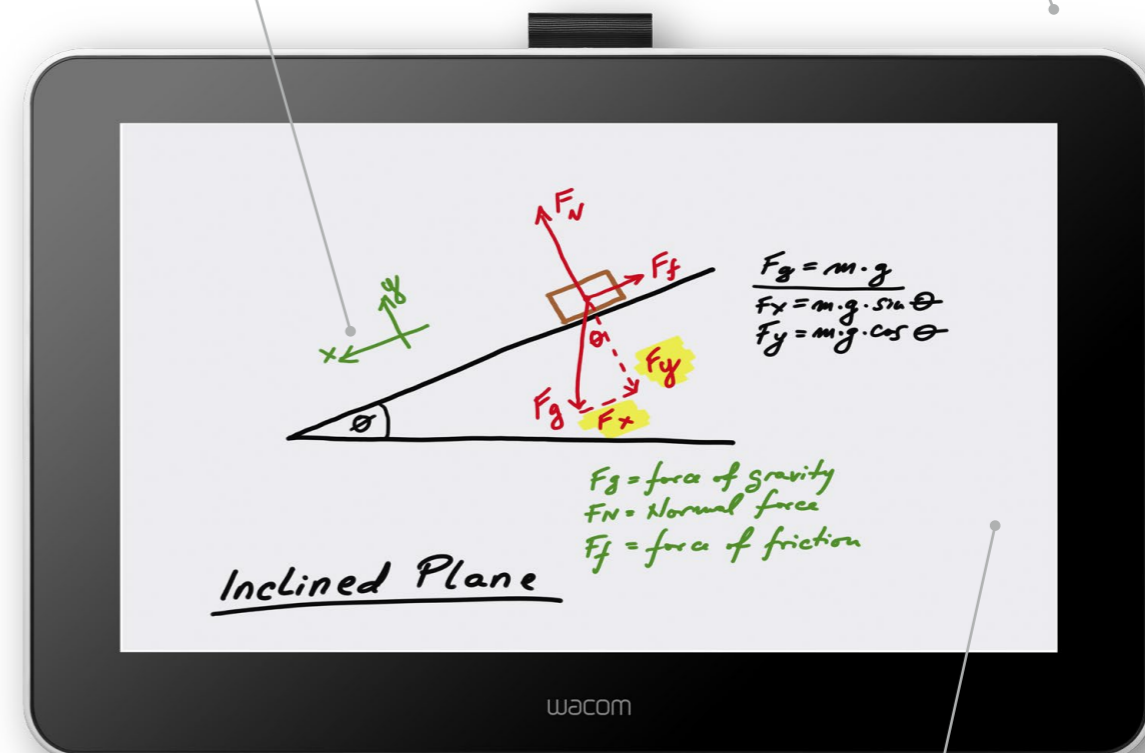
IDEAL FOR

Remote and In-Person Learning
 Used in the classroom, teachers add precise drawings and digital ink annotations to lesson resources straight onto Wacom One's large 13-inch Full HD screen. Remote learners watch pre-recorded videos or join live lessons using video conferencing software.

Plug and play the Wacom One with desktops, notebooks, and even compatible Android devices for flexible teaching options.

Connects easily to any computer and compatible Android devices

13,3" color LCD panel with full HD (1920x1080) resolution



Natural pen feel – battery-free drawing pen that looks and feels like a real pen

Paper-like canvas – the friction of the display surface feels like paper

Cintiq 16

With its premium 15.6-inch pen display, our Cintiq 16 offers a Full HD anti-glare screen, battery-free digital pen, and foldable legs to adjust the screen angle.

KEY FEATURES & BENEFITS

- **Screen Size**
The large anti-glare screen gives teachers a generous extended working space.
- **Flexible Use**
Comfortable full-size viewing of documents in portrait and landscape mode.
- **Realistic Feel**
Using the battery-free pen creates the feeling of writing on actual paper.

IDEAL FOR

Smaller Classroom Settings
The Cintiq 16 offers the perfect middle ground between large screen size and limited working space.

Teachers annotate lesson slides, personalise resources, and add feedback to student work using the 15.6-inch Full HD screen. Shared whiteboard spaces are used for collaborative projects with precise digital ink writing.



Cintiq 22

Our industry-leading 22-inch Full HD Pen Display with adjustable stand gives teachers a large, accurate working space for comfortable writing.

KEY FEATURES & BENEFITS

- **Extensive Screen Space**
The generous screen size gives teachers a comfortable working space.
- **Flexible Use**
Use the adjustable stand or integrate with a third-party ergonomic arm or podium.
- **Digital Ink**
The pressure sensitive, battery-free pen allows precision drawing and writing.

IDEAL FOR

Hybrid Teaching
Digital ink annotations allow students to follow self-guided tasks without the need for teacher supervision, making it ideal for learning across multiple sites.

You can also use the large 22-inch Full HD screen to create high-quality video content for flipped and blended learning models.



DTK-2451 / DTH-2452

Our large 24-inch Full HD screen lets educators display two A4-sized pages side by side, featuring video output, fully adjustable stand, and precise battery-free pen.

KEY FEATURES & BENEFITS


- **Largest Screen Size**
The expansive active area gives teachers a comfortable working space.
- **Flexible Display Options**
Support for both analog and digital connections with DVI video in/output.
- **Multi-Touch Enabled**
Choose the DTK-2452 for intuitive navigation and multi-touch functionality.

IDEAL FOR

Lecture Halls


The DTK-2451 and DTK-2452 make the perfect addition to lecture halls and large classroom spaces either using the display stand or attached to a third-party ergonomic arm or podium.

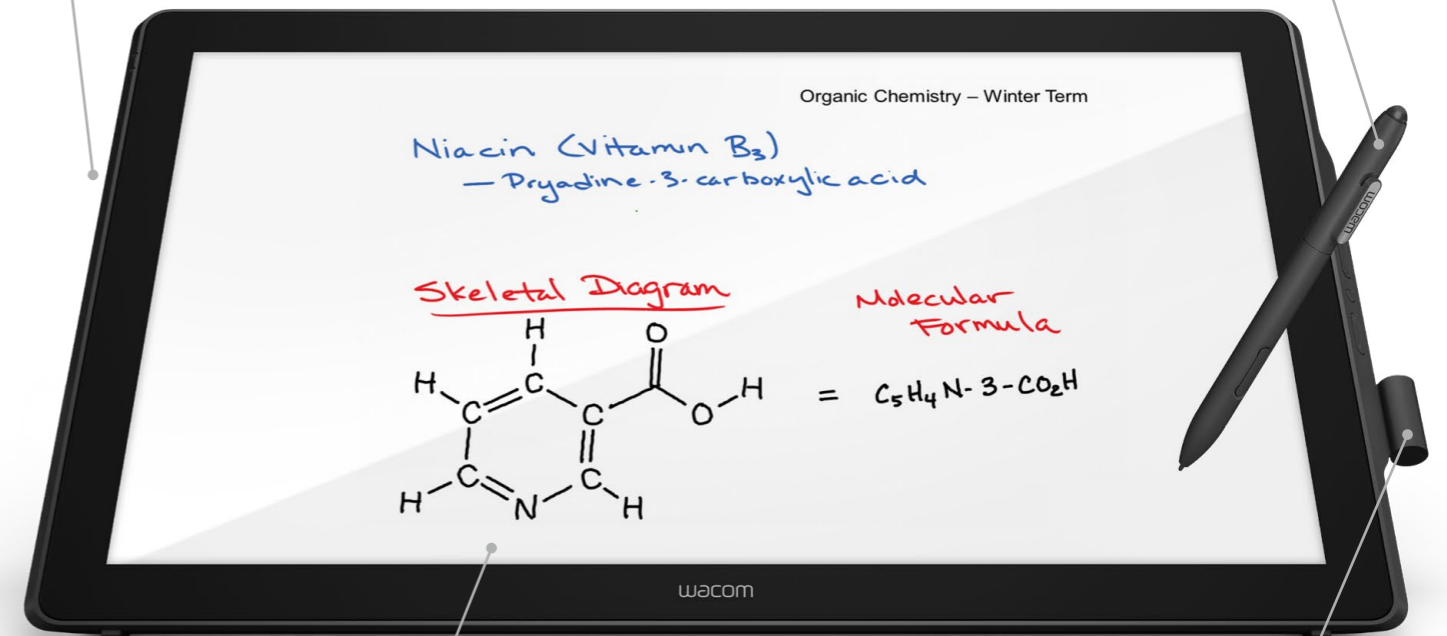
With HDCP compliant connection and video out port, learners view digital ink annotations on presentations displayed through a projector. Choose the DTK-2452 for additional multi-touch functionality with touch gestures for intuitive navigation.


 DVI video in/out for support of both analog and digital connection




reddot award 2018
winner

 Patented cordless, battery-free pen



 24" color LCD panel with Full HD (1920 x 1080) resolution

 Removable pen holder can be placed on either side

Wacom Pen Tablets

Pen tablets are an affordable way to add digital ink to the classroom. Our software-neutral tablets work perfectly with existing learning management systems, video conferencing software, and popular programs. It's the most cost-effective way to add the power of handwriting to digital teaching.



ONE BY WACOM S

This compact 6-inch Pen Tablet with battery-free pen is ideal for small workspaces. Students can connect with their own devices to access online collaborative spaces for engaging, interactive lessons.



ONE BY WACOM M

An 8-inch lightweight, portable Pen Tablet and battery-free pen that's perfect for using with larger computer screens. It's the essential digital tool for annotating lesson resources and marking student assignments.



WACOM INTUOS S WL

This 6-inch Pen Tablet is lightweight, compact, and cable-free, connected via Bluetooth with no AC charger required. An ideal Pen Tablet for students to use remotely and in class for collaborative work.



WACOM INTUOS M WL

This 8-inch cable-free Pen Tablet connects via Bluetooth with no AC charger required. It's portable and lightweight for teachers to use while moving around the classroom and offers a large writing space.

One by Wacom S / M

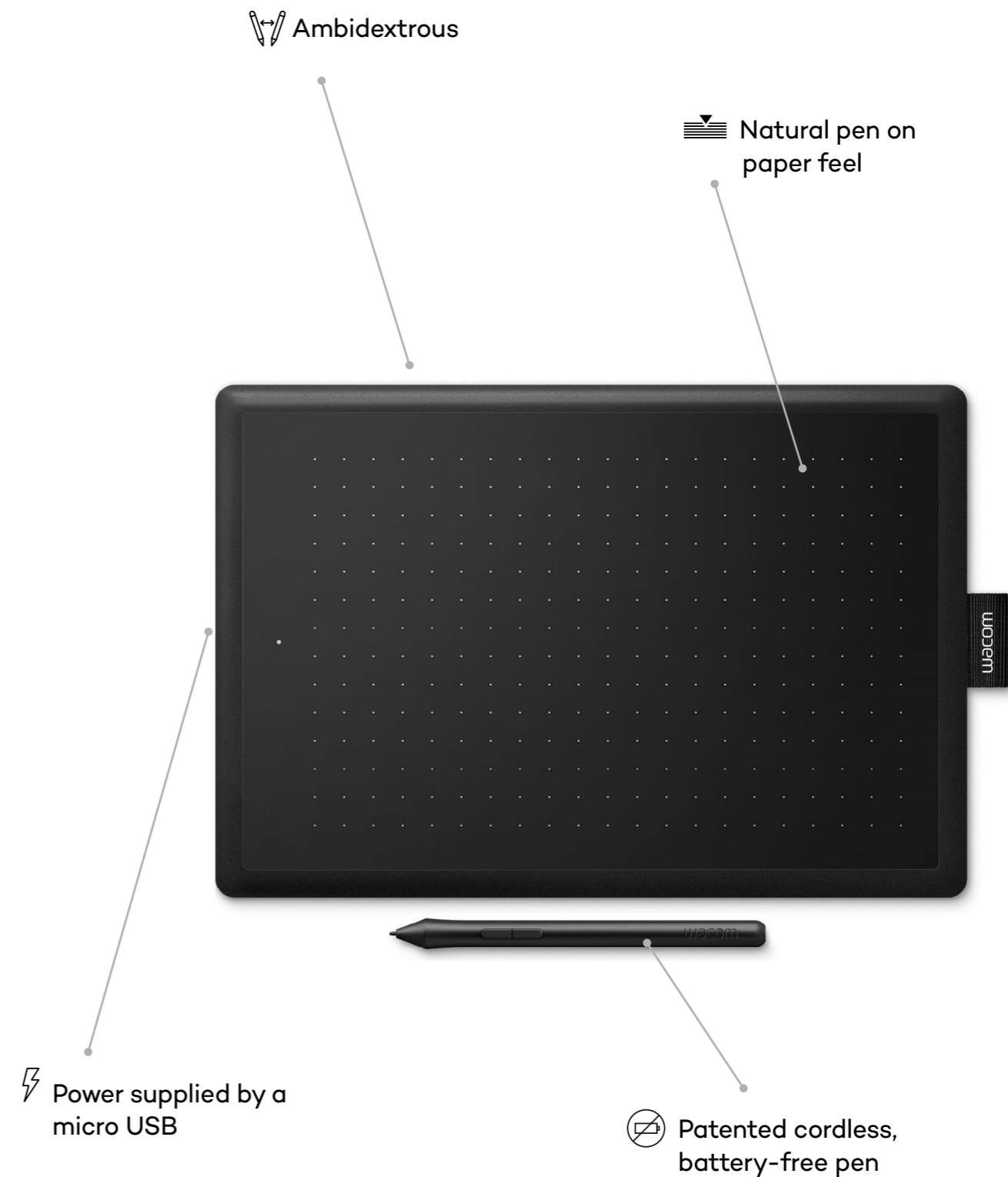
The One by Wacom is our most affordable Pen Tablet, available in both 6-inch and 8-inch size for teacher and student use. Its light, portable design is ideal for small spaces and flexible classroom arrangements.

KEY FEATURES & BENEFITS

- **Portable design**
The slim, lightweight design of this robust tablet makes it easy to carry between home and work.
- **Robust Technology**
The durable, compact design makes the One by Wacom a practical choice for students.
- **Ideal for Student Use**
This affordable Pen Tablet allows students to engage and collaborate in lessons for active learning.

IDEAL FOR

- **Student Collaboration**
During lessons, students and teachers use One by Wacom pen tablets connected via USB to their devices to collaborate on digital whiteboard spaces and learning platforms.
- **Active Learning**
Students handwrite ideas and answer questions using digital ink during lessons for a collaborative learning experience. Rather than passive learning, lessons become interactive to boost student engagement.



Wacom Intuos S WL / M WL

Our Wacom Intuos is available in both 6-inch and 8-inch sizes, with a large writing area that stretches from edge to edge. Selected models come with Bluetooth connection in addition to USB.

KEY FEATURES & BENEFITS

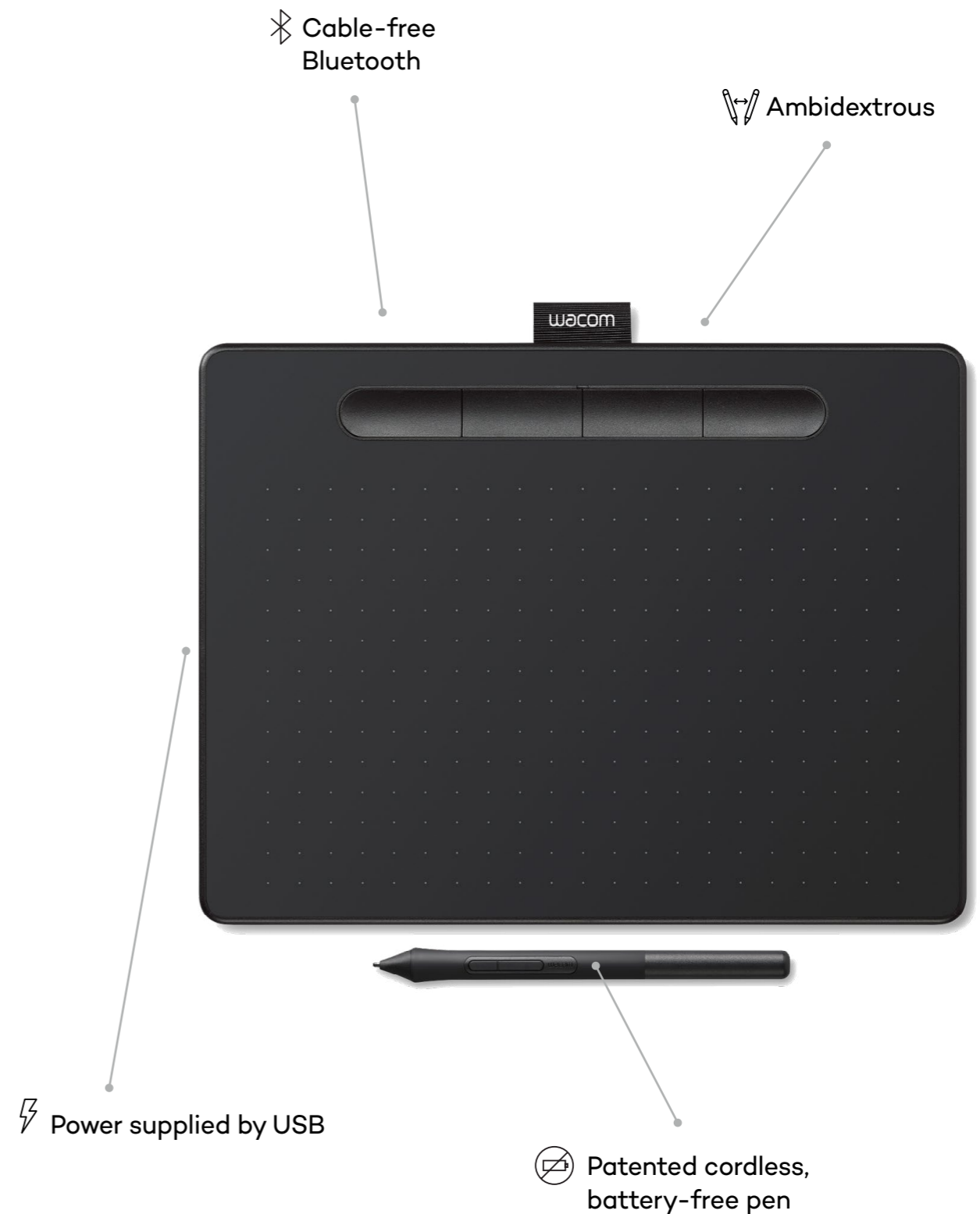
- **Cable-Free Option**
Use the simple USB connection or choose the Intuos S WL/ M WL to connect via cable-free Bluetooth.
- **Mobile Teaching**
The Bluetooth connection lets teachers move around the classroom with their tablet for individual student support.
- **Portable Design**
This durable, lightweight pen tablet is easy to move between classrooms and store away.

IDEAL FOR

Annotating Lesson Resources

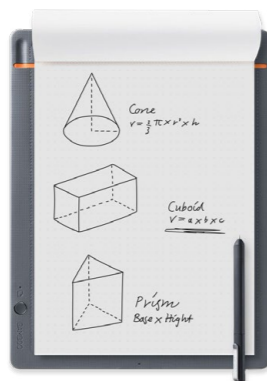
Teachers connect a Wacom Intuos to their device via USB or Bluetooth connection to prepare and edit lesson resources. They write, draw, and annotate on familiar software including slideshows, PDFs, and digital whiteboard spaces both before lessons and while teaching.

Marking takes place directly on students' work so they can see exactly what they need to improve. Student work is submitted and stored electronically with written feedback added using digital ink.



Bamboo SmartPads

Smartpads let teachers write on any paper at their desk or while moving around the classroom using a Bluetooth connection to turn their notes into digital ink. They can project their digitized notes onto a PC or a mobile device while teaching.



BAMBOO SLATE L (A4)

Our large A4-sized Smartpad and ballpoint pen is light and has Bluetooth connectivity, allowing teachers to write and draw as they move around the classroom, and display the results on a screen in real time.



BAMBOO FOLIO L (A4 WITH COVER)

Our large A4-sized Smartpad has an integrated cover and comes complete with a Wacom Ballpoint pen. It accurately converts handwritten notes and sketches into digital files to project onto a linked screen in real time.

Bamboo Slate L

Our Bamboo Slate Smartpads let teachers write on any paper using a Wacom Ballpoint pen. Handwritten notes and sketches are instantly converted to digital ink at the touch of a button.

KEY FEATURES & BENEFITS

• Choice of Size

The Bamboo Slate is available in A5 and A4 size to suit individual teacher preference.

• Digital Ink

Instantly converting handwritten notes to digital ink removes any need for retyping.

• Sensitive Design

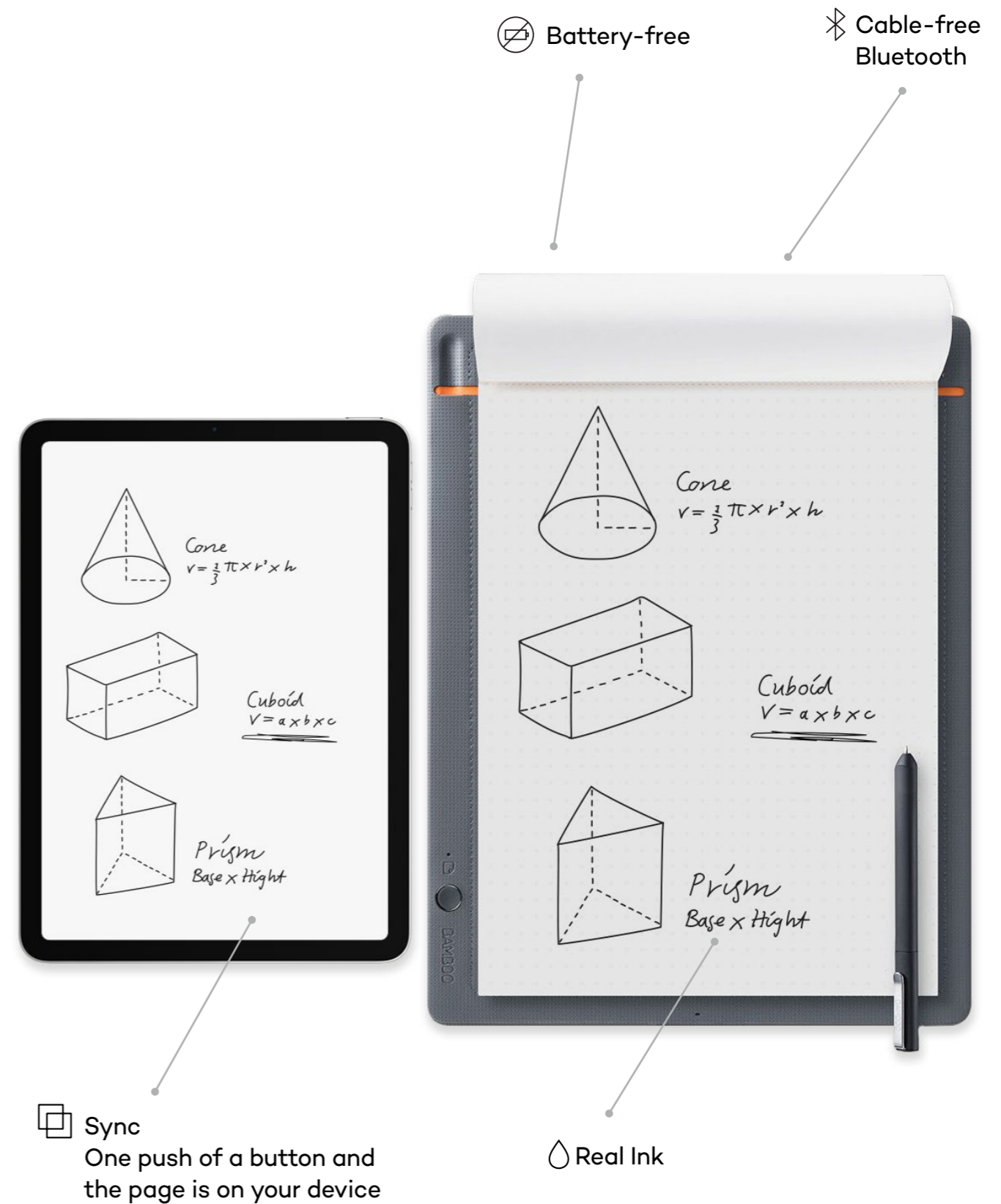
Our Smartpad picks up subtle changes in pressure and handwriting through 80 pieces of paper.

IDEAL FOR

Ideating and Lesson Planning

Teachers write lesson plans, sketch diagrams, and brainstorm ideas on actual paper using a Wacom ballpoint pen on their Bamboo Slate Smartpad. The A5-sized version is compact and light, while the A4 Smartpad offers a large writing area.

Using a Bluetooth connection, handwritten notes are accurately captured as digital ink. Notes are shared and categorized with our unique tagging feature and displayed on a linked screen in real time.



Bamboo Folio L

Bamboo Folio Smartpads are available in A5 and A4 size, complete with an integrated protective cover and Wacom ballpoint pen. Handwritten notes are converted to digital ink using a Bluetooth connection.

KEY FEATURES & BENEFITS

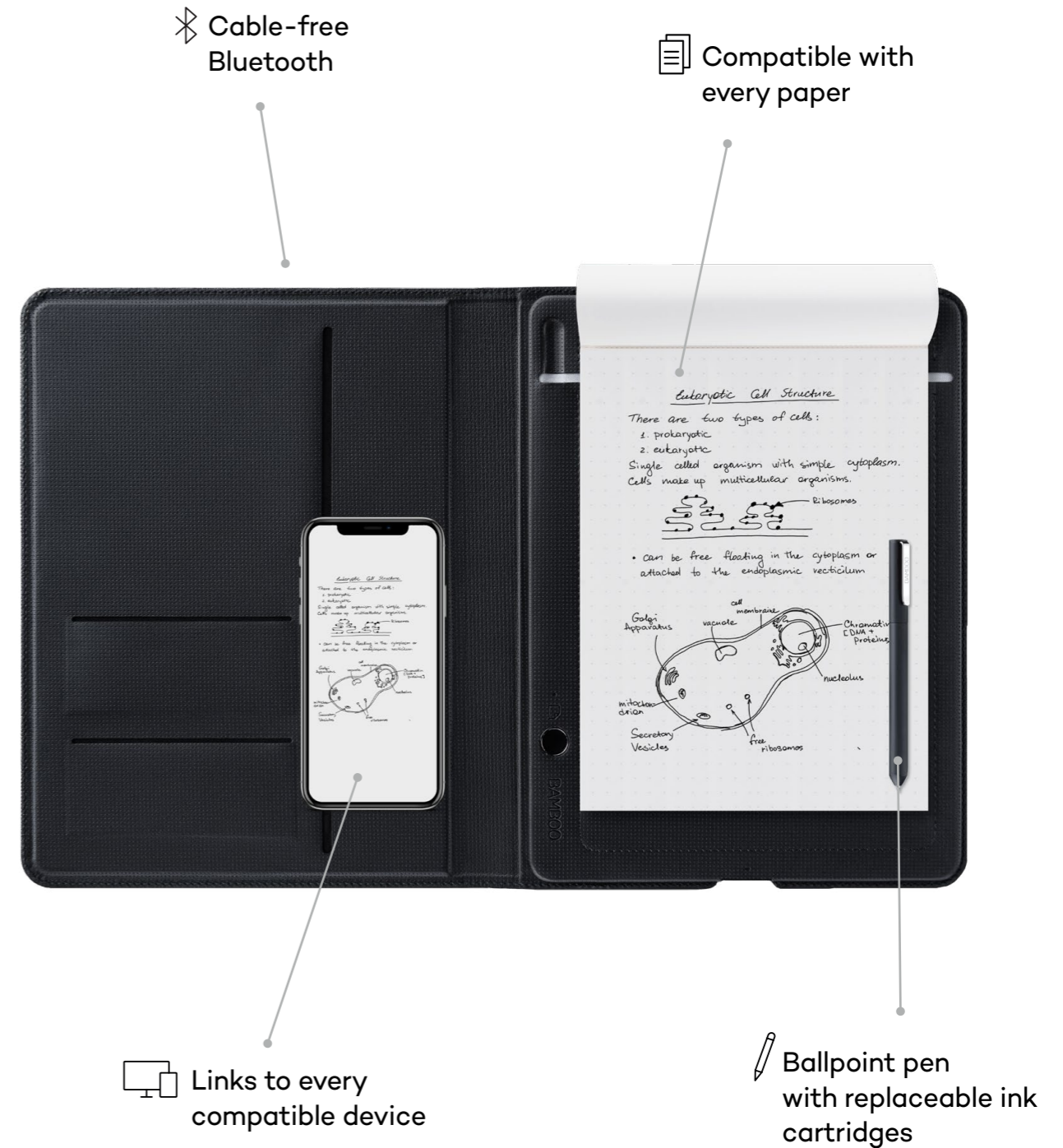
- **All Paper**
Bamboo Smartpads accurately recognize individual handwriting styles on any paper.
- **Flexible Use**
Teachers move around the classroom making notes and display them in real time on a linked device.
- **Protective Cover**
Keep notes safe with an integrated cover to protect the paper pad and easy storage when not in use.

IDEAL FOR

Instant Student Feedback

With its cable-free design, teachers move around the classroom with their Bamboo Folio, to make notes about common misconceptions, track student progress, and record teaching points to address with the entire class.

The handwritten notes are converted accurately to digital ink and displayed on their classroom PC in real time for further editing and sharing.



Global reach. Local impact.



Japan (HQ)

For more information please contact:

Wacom Co., Ltd. · Sumitomo Fudosan Shinjuku Grand Tower 31F, 35F,
8-17-1 Nishi-Shinjuku, Shinjuku-ku, Tokyo 160-6131, Japan
education.jp@wacom.com



Americas

For more information please contact:

Wacom Technology Corporation · 1455 NW Irving Street, Suite 800,
Portland, OR 97209 USA
education@wacom.com



Europe, Middle East and Africa

For more information please contact:

Wacom Europe GmbH · Völklinger Straße 1, 40219 Düsseldorf, Germany
education@wacom-europe.com



China

For more information please contact:

Wacom China Corporation · 518, West Wing Office, China World Trade Center,
No. 1 Jianguomenwai Avenue, Chaoyang District, Beijing 100004, China
education.cn@wacom.com.cn

Hong Kong

For more information please contact:

Wacom Hong Kong Ltd. · Unit 1610, 16/F, Exchange Tower, 33 Wang Chiu Road
Kowloon Bay, Hong Kong
education.hk@wacom.com.hk



Australia

For more information please contact:

Wacom Australia Pty. Ltd. · Ground floor, Building 1, 3 Richardson Place,
North Ryde, NSW, 2113, Australia
education@wacom.com.au

Korea

For more information please contact:

Wacom Korea Co., Ltd. · Rm #1211, 12F, KGIT Sangam Center, 402 Worldcup
Bukro, Mapo-gu, Seoul 03925, Korea
education@wacomkorea.com

Singapore

For more information please contact:

Wacom Singapore Pte. Ltd. · 5 Temasek Boulevard, #12-09, Suntec Tower Five,
Singapore 038985
educationsea@wacom.com

India

For more information please contact:

Wacom India Pvt. Ltd. · 426, Tower B, DLF Building Jasola District Centre,
Mathura Road, New Delhi 110025 India
education.india@wacom.com

wacom.com/education

© 2021 Wacom Co., Ltd.