

exatech

# exatech

EXATECH offers comprehensive, tailor-made and innovative solutions, as relates to exam-organization management, digital marking and more.

Our group has been working with government agencies, universities and technical schools, as well as other institutions, for many years.

Our R&D sector and our technologies place us among the most innovative companies in France and within the "French Tech".

With offices in Paris, Lyon and Montpellier, we guarantee continuous availability and ensure the success of your exams and assessments.



Digital correction  
of exam papers



Automatic correction  
of MCQs



Innovative solution  
for assessments

Our most famous digital solutions are  
VIATIQUE, Passnum and QCM direct.

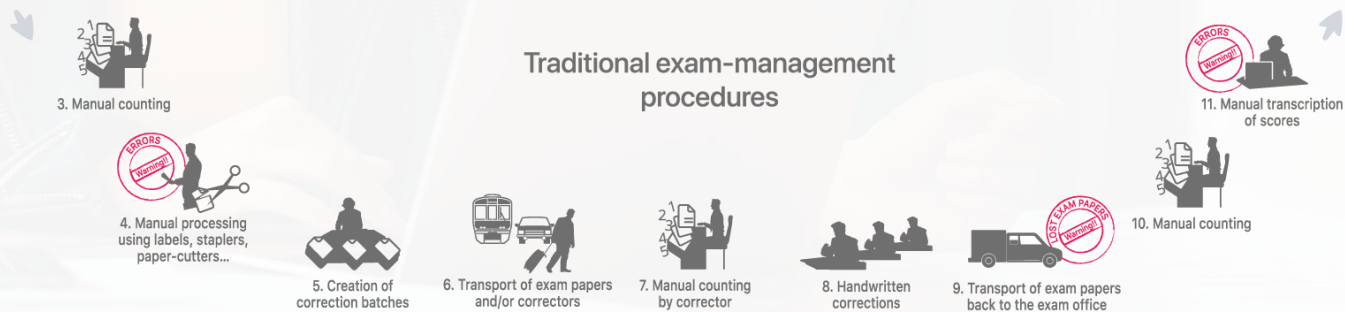
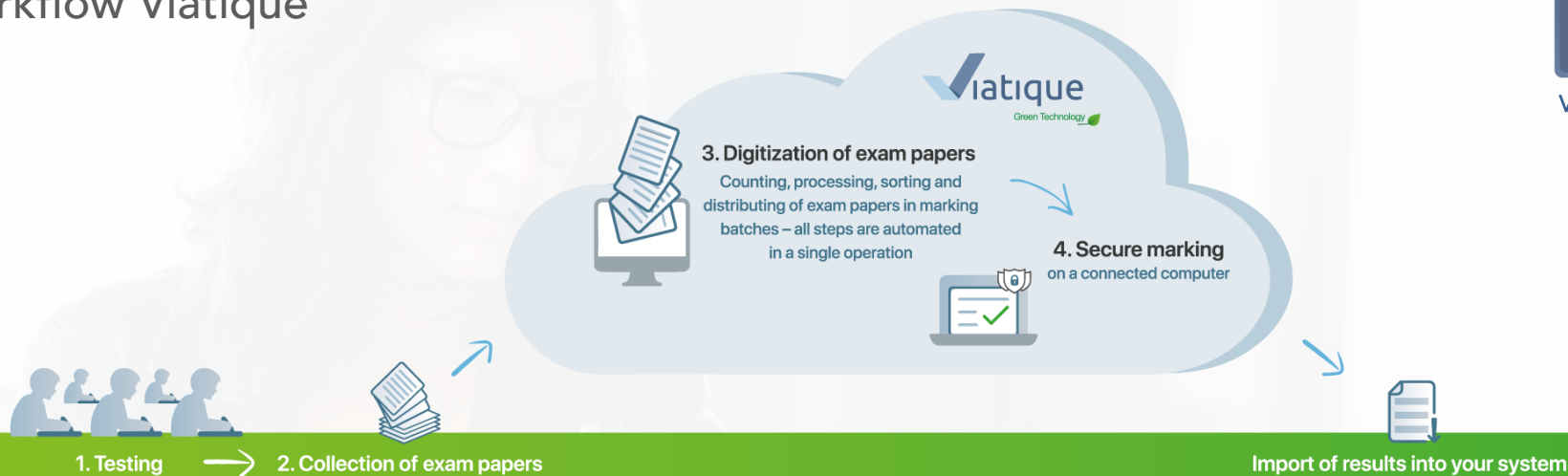


## VIATIQUE

Secure digital marking for  
high-stakes exams



# Workflow Viatique



# Exam configuration and digitization of exam papers



VIATIQUE

## Exam configuration

- Candidates uploaded via file import
- User account management

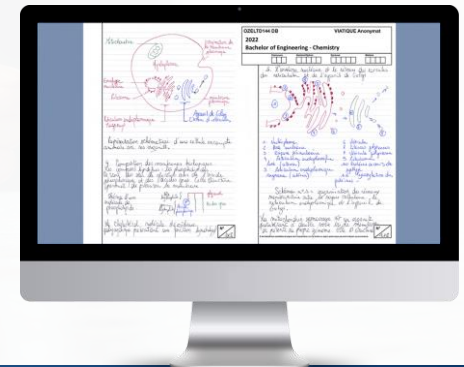
Session	Exams	Comp.	Launch	Candidates	Scripts	Scanning	Problems	Reprints	Message	Corrections	Deliberations	Archiving
2022	Bachelor of Engineering - Chemistry		✓	12	4	50 %				0 %	X	X
2022	Bachelor of Engineering - Engineering sciences		✓	12	10	100 %	⚠				X	X
2022	Bachelor of Engineering - Physics		✓	12	5	41 %				20 %	X	X
2022	Bachelor of Engineering - English		✓	12	0	0 %					X	X
2022	Bachelor of Engineering - Information technology		✓	12	0	0 %					X	X
2022	Bachelor of Engineering - Digital Technology		✓	12	0	0 %					X	X



No transportation of exam papers

## Automated processes

- Instant processing of candidates' exam papers (each paper is identified, rendered anonymous and encrypted)
- Upload to a secure cloud server



exatech

# Correction and supervision

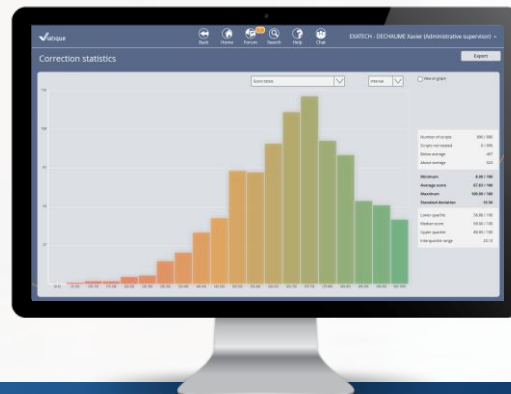


## Correction

- Online correction
- Equal treatment of candidates
- Exam papers are sorted into constrained or random batches and distributed in one click
- Simple and double marking
- Integrated easy-to-use tools and self-training module

## Remote supervision of exam corrections

- Access to real-time statistics
- Secure forum and instant messaging tools
- Marks standardization functionalities
- Import of results in your system





## Why use digital marking for high-stakes exams?



No shipping or transport  
of exam papers and  
secure correction



User mobility with  
on-line correction



Automated  
procedures



Saves time and  
reduces costs



Automatic processing of  
exam papers



No data entry  
errors



Electronic archiving of  
exam papers

# Examples of deployment

Certification NF 461



VIATIQUE



## French Baccalaureate and DNB

(International network of French schools abroad)

290 scanning centres in over 130 countries worldwide

150 000 exam papers in 2021  
1400 correctors



CentraleSupélec

## Entrance exams for Management and Business Schools

45 000 exam papers in 2021

1 scanning centre (EXATECH)

## French Department of Education

Recruitment of teachers and other education personnel

260 000 exam papers in 2021

40 scanning centres in France

aefe

Agence pour  
l'enseignement français  
à l'étranger

## Engineering School entrance exams

100 000 exam papers in 2021

1 scanning centre (EXATECH)

ecricome

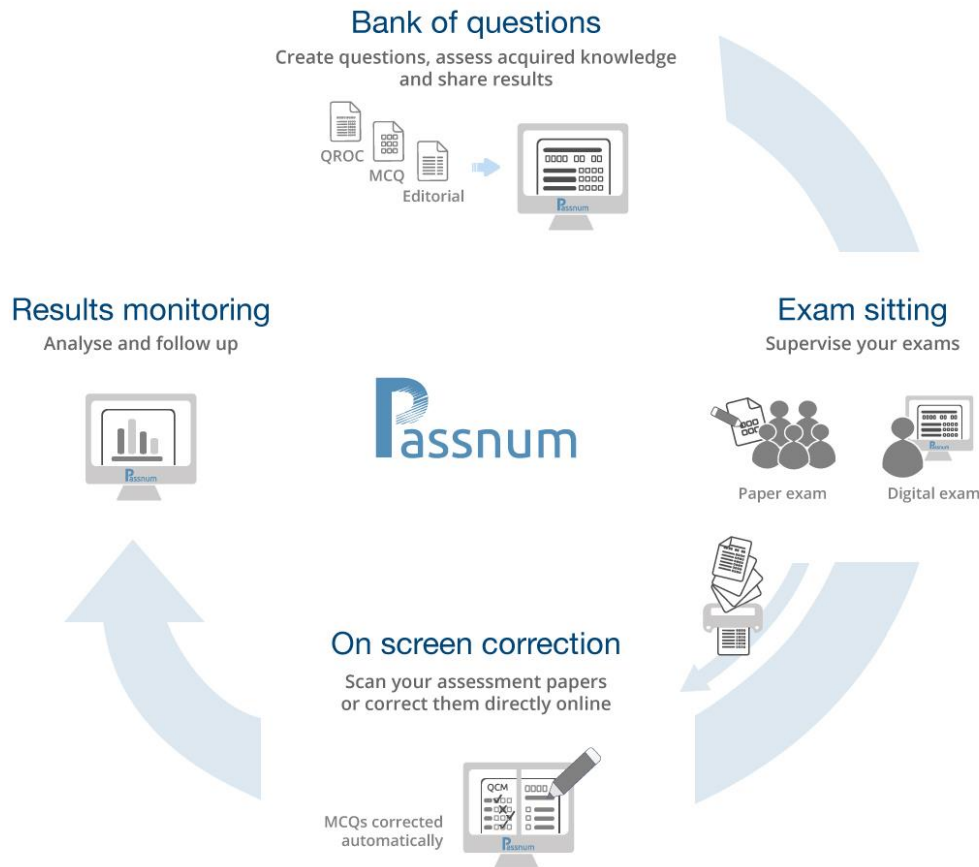


## PASSNUM

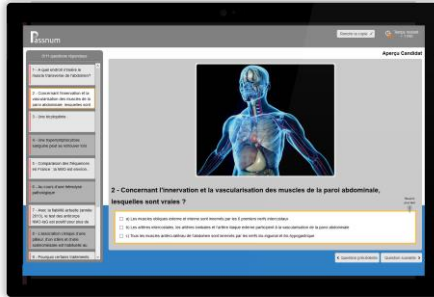
Creation of paper an digital  
assessments for the classroom

# Workflow Passnum

## Evaluation 2.0



# Why use Passnum for assessments ?



Question bank



MCQs, open questions,  
media



Paper & digital  
assessments



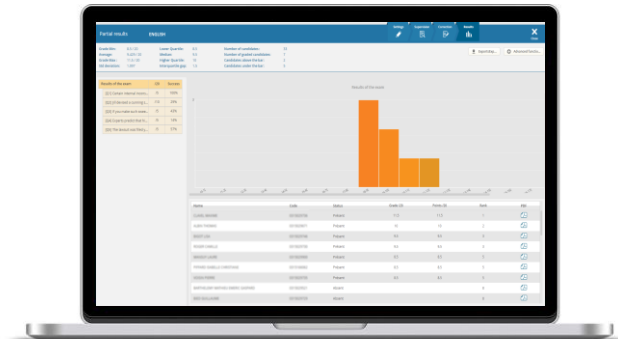
Automatic correction  
of MCQs



Online correction



Assessment archives  
and result consultation



# Examples of deployment



PASSNUM



Assessments throughout  
the academic year



Bank of questions  
shared by the different  
schools of the group

Used both for  
assessments and  
exams



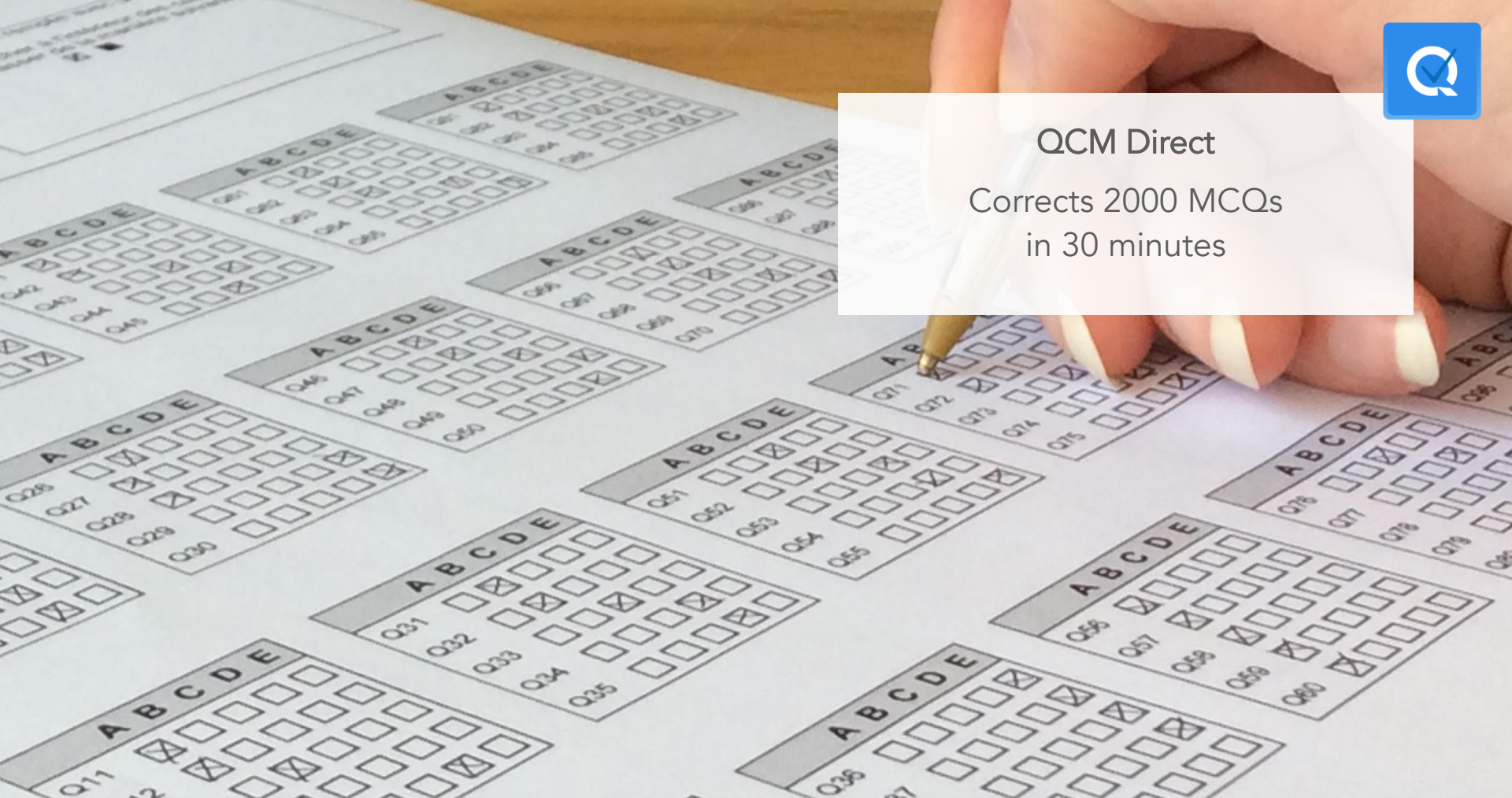
Professional competence  
training in the banking  
sector





QCM Direct

Corrects 2000 MCQs  
in 30 minutes



# Workflow QCM Direct

## Creation and automatic correction of multiple choice questionnaires



QCM Direct

### 1. Creation

1. Create your questions using Word



2. Import them into QCM direct and choose a layout



3. Import your list of candidates



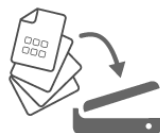
4. Specify your marking scheme



Candidates take the test



### 2. Reading and correction



Scan the answer sheets  
QCM direct corrects them instantly

### 3. Results consultation

Instant results



Fast and simple marking scheme modification



Individual and global statistics



Web publishing

# Why use QCM Direct for the correction of your MCQs?



Automatic correction of  
MCQs



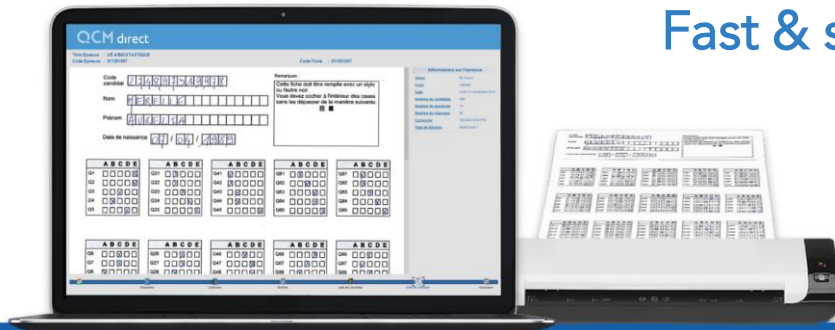
Thousands of answer  
sheets corrected in a  
few minutes



Saves time and  
reduces costs



Instant statistics  
and results

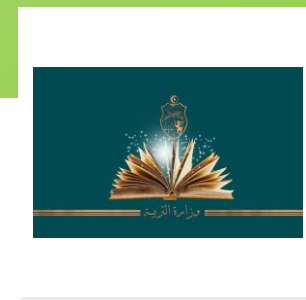


Fast & simple !

# Examples of deployment



QCM Direct



exatech