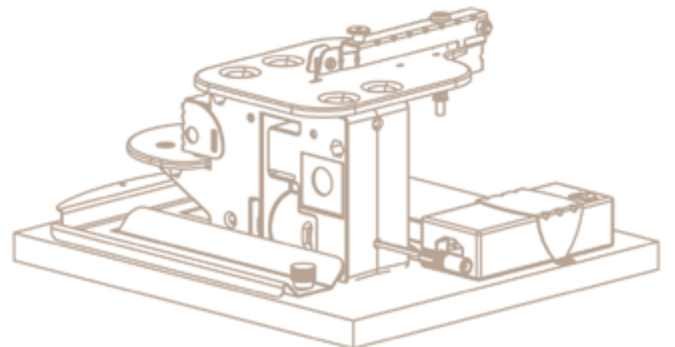
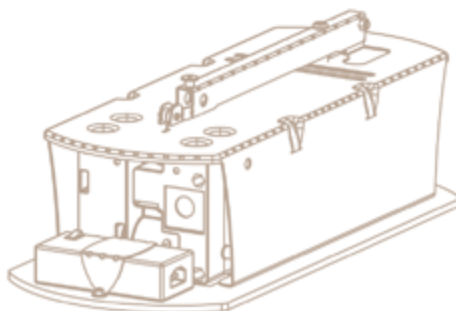
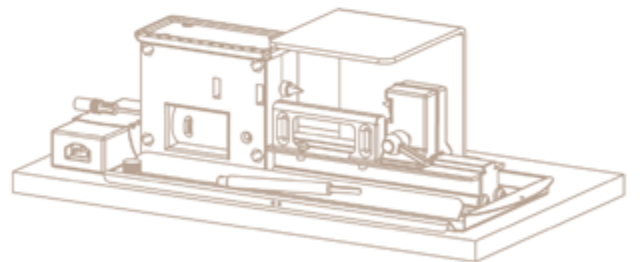
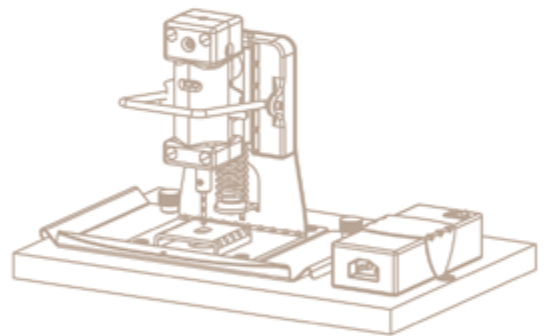


# wooder

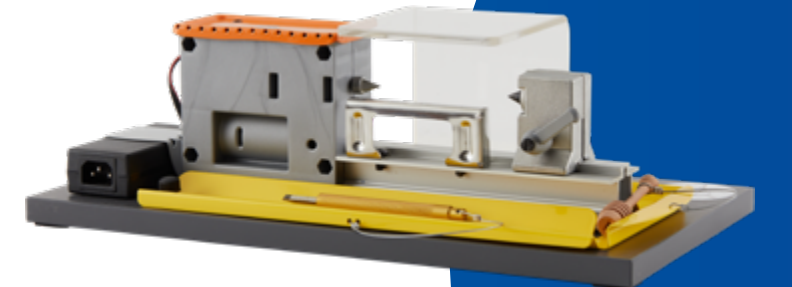
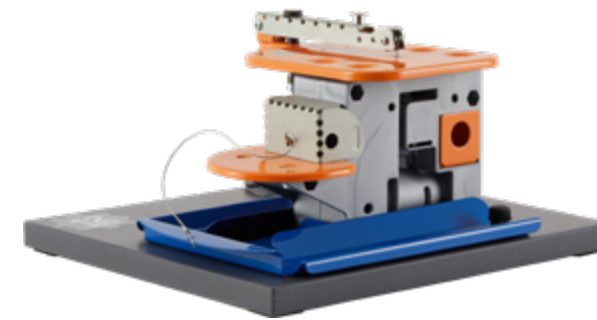
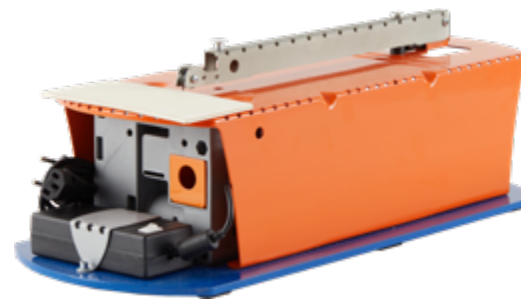


# wooder

## WHO ARE WE?

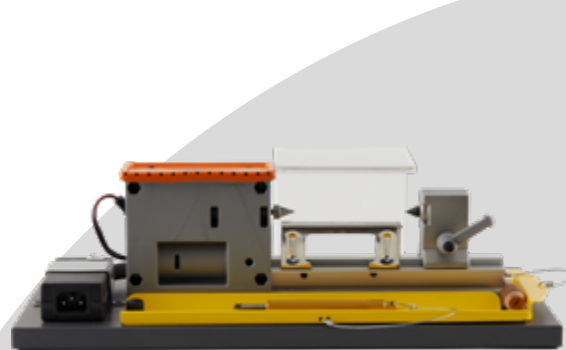
BenMaker has been carrying out its production activities in Bursa since 2016. BenMaker aims to accelerate individuals to develop their hand skills and gain professional competence with the educational tools and equipment produced 100% domestically. BenMaker bring traditional and modern production methods together with users with Wooder which instill a love of production at an early age with design and styling sets; EKSER, which offers three-dimensional design and technology support; FAGNER product groups, which enable professional knowledge and competencies to be acquired quickly and practically.

With Wooder products, BenMaker contributes to the raising of productive generations in more than 1000 institutions and organizations in the country and abroad.



# Wooden Design and Shaping Modules

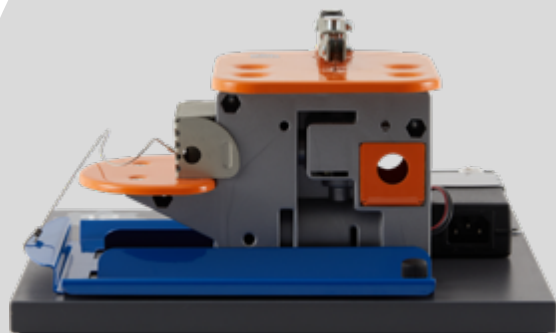
It aims to enable children to think analytically,  
develop their design-oriented thinking skills,  
and turn their dreams into reality.



Lathe Module



Drill Module



Jigsaw Sander Module



Saw XL Module



## What Children Gain With wooder



**Sense of  
Discovery**



**Design  
Based  
Thinking**



**Self  
Confidence  
and  
Responsibility**



**Learning  
with Fun**



**Innovative  
Thinking**



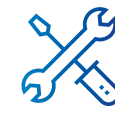
**Preparation  
For The  
Future**



**Team  
Spirit and  
Sharing**



**Global  
Awareness**

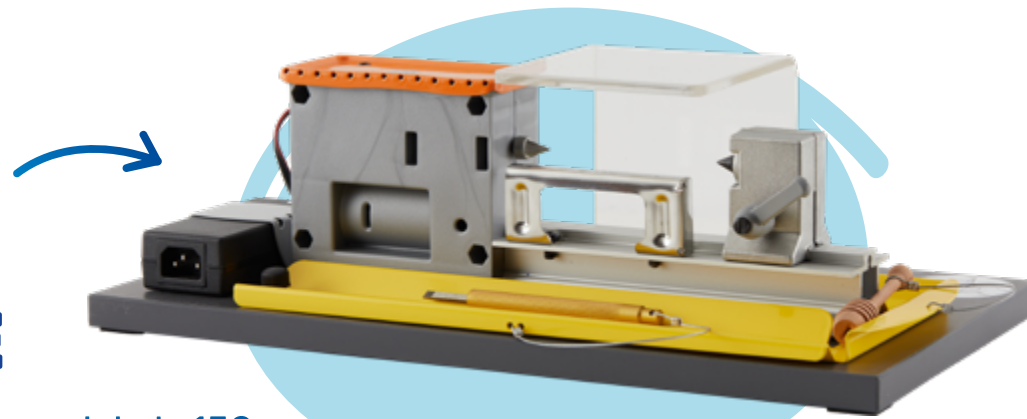


**Basic  
Technical  
Knowledge**



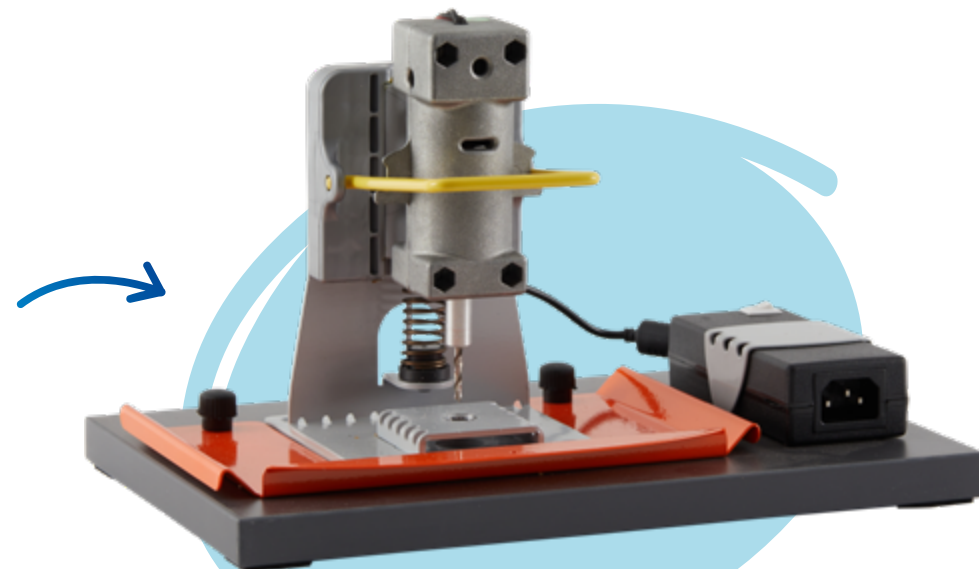


## LATHE MODULE



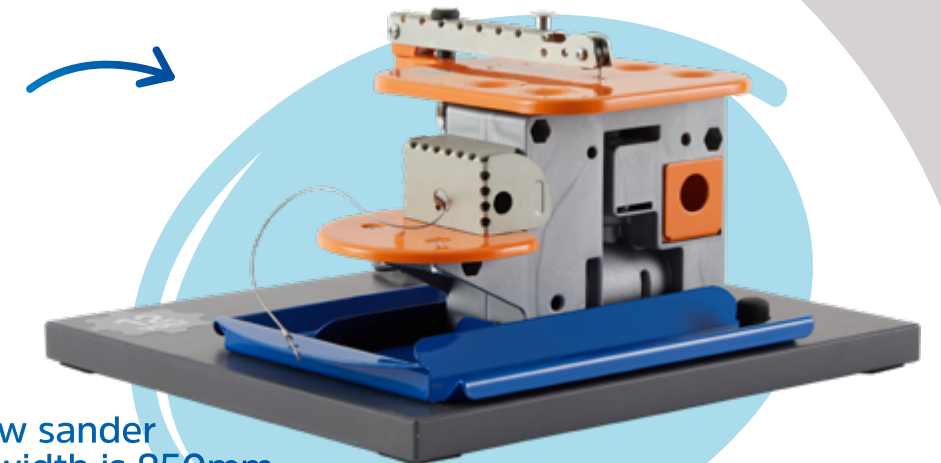
- Height of the lathe module is 150 mm, its width is 350 mm and its depth is 120 mm.
- The operating voltage of the product is 12V.
- The diameter of the material that the lathe module can process is at least 20 mm, its length is at least 100 mm.
- Lathe can only process wood materials.

## DRILL MODULE



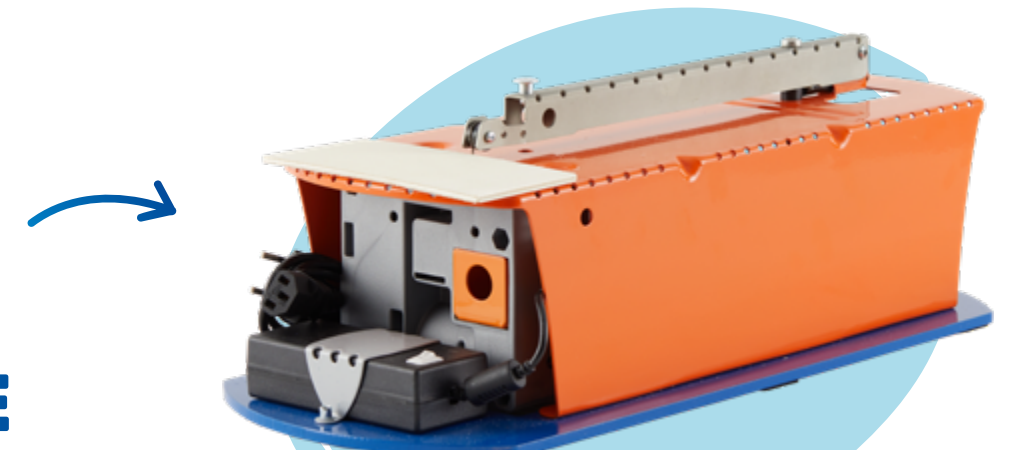
- Height of the drill module is 200 mm, its width is 150 mm and depth is 150 mm.
- The operating voltage of the product is 12V.
- This product is only operate wood plywood.
- Drilling thickness is 4 mm.
- The drill bit diameter of the drill module is 3 mm.

## JIGSAW SANDER MODULE



- The height of the jigsaw sander module is 180mm, its width is 250mm, its depth is 250 mm.
- The operating voltage of the product is 12V.
- This product can only process wood plywood.
- The cutting thickness is maximum 4 mm.
- The sander paper, which used by the jigsaw sander module, has 60 grit thickness.

## SAW XL MODULE



- The height of the saw XL module is 180 mm, its width is 300 mm and depth is 465 mm.
- The operating voltage of the product is 12V.
- The plywood thickness should be 4 mm.
- Maximum cutting length is 240 mm.
- The product has the ability to process wood plywood.

# CONSUMABLES MATERIALS



## Plywood

- 4 mm thickness
- 70 mm width
- 150 mm length

There are 100 pieces of plywood in the wooden plywood consumables box specially produced from poplar tree.



## Wooden Cylinder

- 20 mm diameter
- 10 cm length

There are 50 cylinders of wood in the wooden cylinder consumable box specially produced from hornbeam.



## Saw Blade and Sander Kit

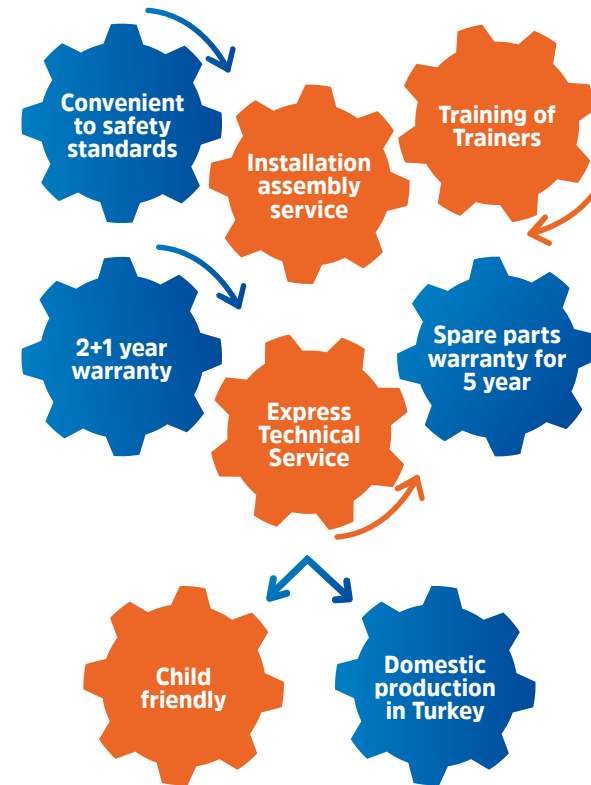
- 10 Pieces of Sander
- 3mm - 2.5mm Saw Tip
- 10 pieces Saw Blades

The kit produced for the jigsaw sander module includes 10 pieces of saw blade and 10 pieces of adhesive emeries.

# DISCOVER THE POWER OF PRODUCTION

Expose your inner MAKER spirit with the Wooder Wood Design and Shaping Set!

Wooder Wood Design and Shaping Set, which is 100% domestic production in Turkey, is a child-friendly production set with high work safety.





# PRODUCTION SKILLS WORKSHOP





+90 224 504 15 97

1. Nilüfer Sok. No:5 16110 Demirtaş  
Dumlupınar OSB / Osmangazi / Bursa

[benmaker.com](http://benmaker.com)

f @ t v | [benmakercom](http://benmaker.com)

**WOODER** is a one of **BENMAKER** brand.