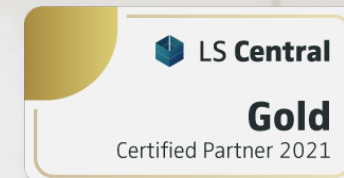


BETT 2022

NAVTECH GROUP Ltd.

London

23-25.03.2022



We deliver highly professional services for implementation, development, and support of ERP, CRM, and BI solutions. Our professional team is built by top industry experts with a proven track record of successful projects.

We are fully dedicated to complete our commitment to customers - delivering business value, leveraging their investment in information technologies and bringing the best knowledge and expertise in our mutual projects. Our goal at Navtech Group is to provide complete solutions for our customers instead of implementing standalone business applications. In our projects, we integrate Business applications (ERP, CRM), Customer and partner portals, E-commerce platforms, 3rd party applications, Analytic applications.





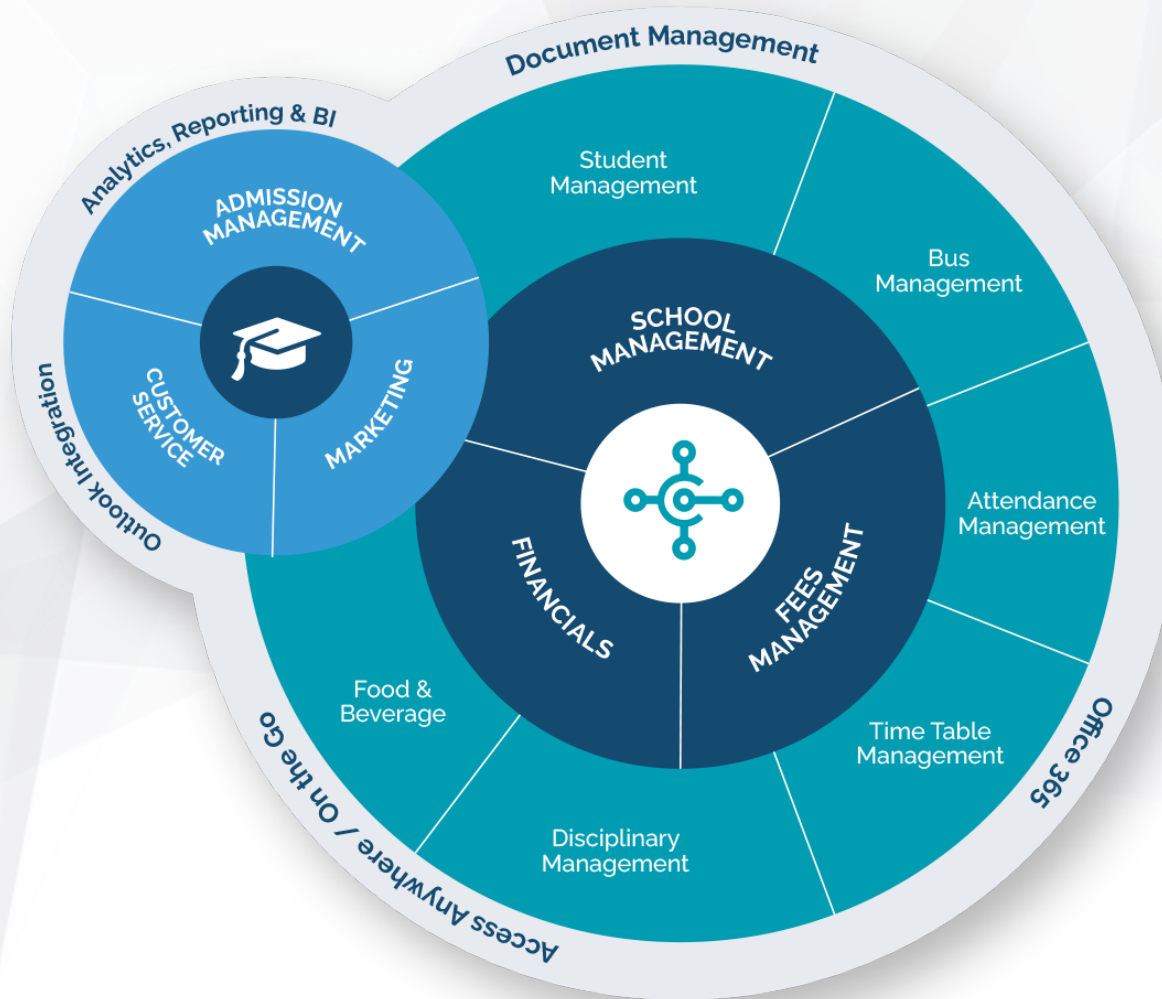
Navtech Group will act as your adviser when it comes to the strategic decision on how your solution should be deployed on Cloud. At Navtech Group we team up with our customers during the processes of analysis of the requirements and design of the solution, implementation, and full support not only for the solution created but for the overall IT infrastructure if needed.

Our slogan is **SUCCESS OR NOTHING**



Microsoft Dynamics 365 Business Central

Microsoft Dynamics 365 Business Central for School Managements is Cloud-based or In-house School information management platform designed for private schools, and other educational organizations. Features include Notification alerts, Admission, attendance, TimeTables, Exams and Exam results, disciplinary, fees management, promotions, bus management included with the service request and maintenance ledgers ... and a lot more.



Business Central is fast to deploy, easy to configure, and drive innovation in product design, development, deployment, and usability.

Integrated **Microsoft Teams** feature. Class inside tab, educators can see average grades, average react time and more.

GEOGRAPHIC INFORMATION SYSTEM

@ SCHOOLS (GIS)

Designed for teachers who want to add interactive tools to improve the teaching and learning of the curriculum. It includes access to the ArcGIS Online platform, which offers work in its own secure environment with a personalized account with a username and password for each teacher and each student. In addition to ArcGIS Online, the program also includes the ability to request additional types of specialized GIS software, including:

• ArcGIS Pro and its extensions:

- 3D Analyst
- Data Interoperability
- Geostatistical Analyst
- Image Analyst
- LocateXT
- Network Analyst
- Publisher
- Spatial Analyst

• ArcGIS Premium apps:

- ArcGIS Drone2Map
- ArcGIS GeoPlanner
- ArcGIS Insights
- ArcGIS Urban Suite





Data and templates

ArcGIS Online provides the opportunity to use ready-made online maps among the thousands of data sets for the world of Esri Living Atlas of the World, or if you wish you can import the necessary data for the lesson in various formats, edit and share with your students or you use preloaded ones. In addition, a wide variety of tools and templates are available to visualize your data, create maps, perform analyzes, and answer complex geographic questions with students.



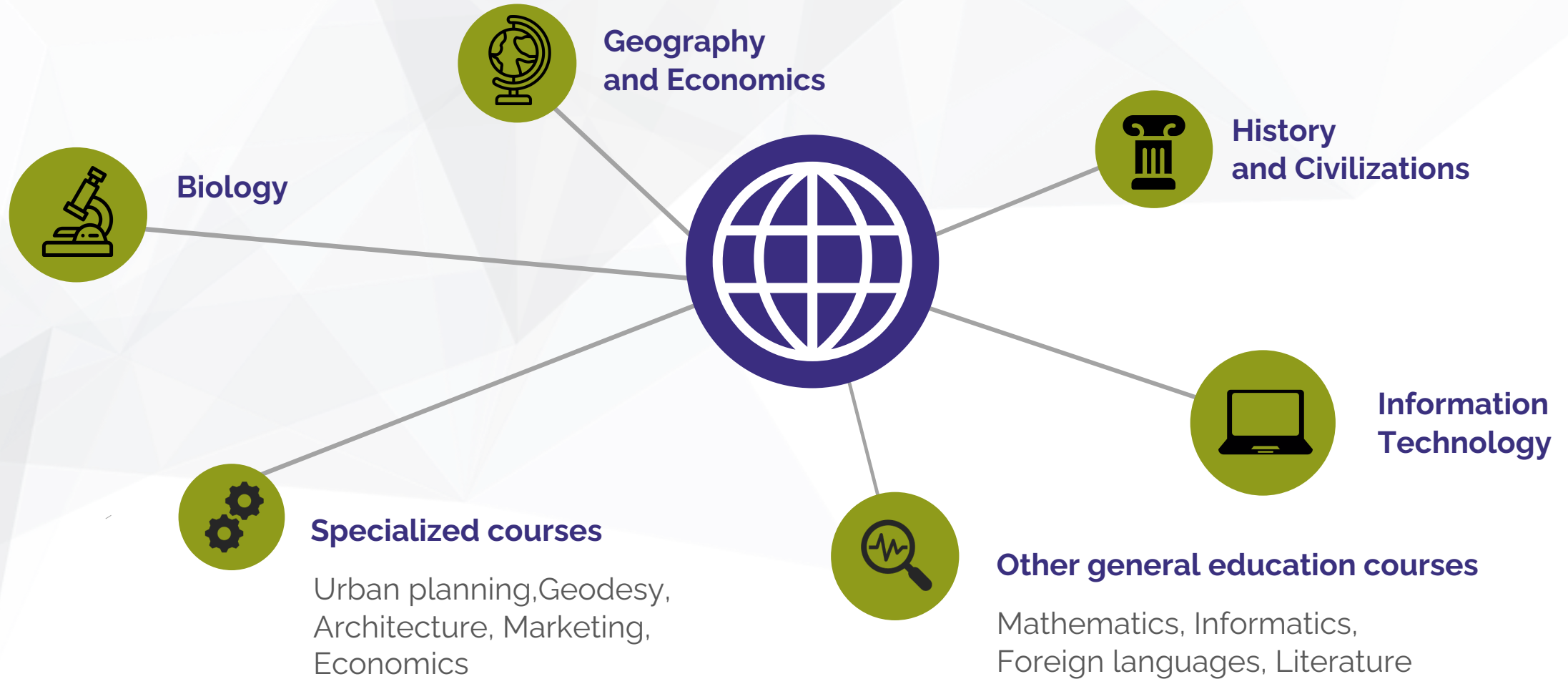
Story Maps

Participants get access to the application for creating interactive GIS maps: Esri StoryMap. It is an online tool for combining maps, images, multimedia content and text, which can be easily used in the classroom to interactively convey the content of the lesson or to prepare independent work by students.

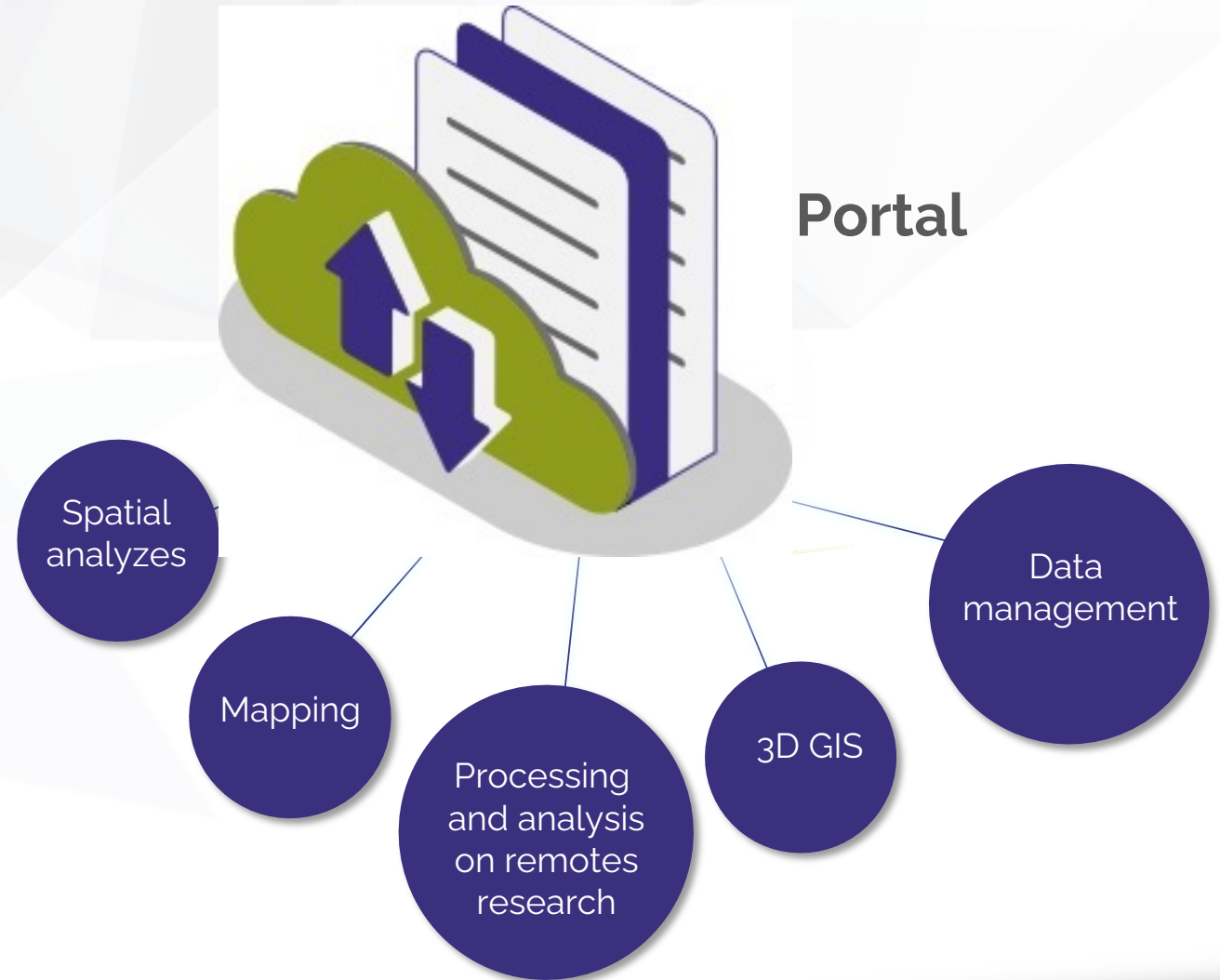


Spatial Analyzes

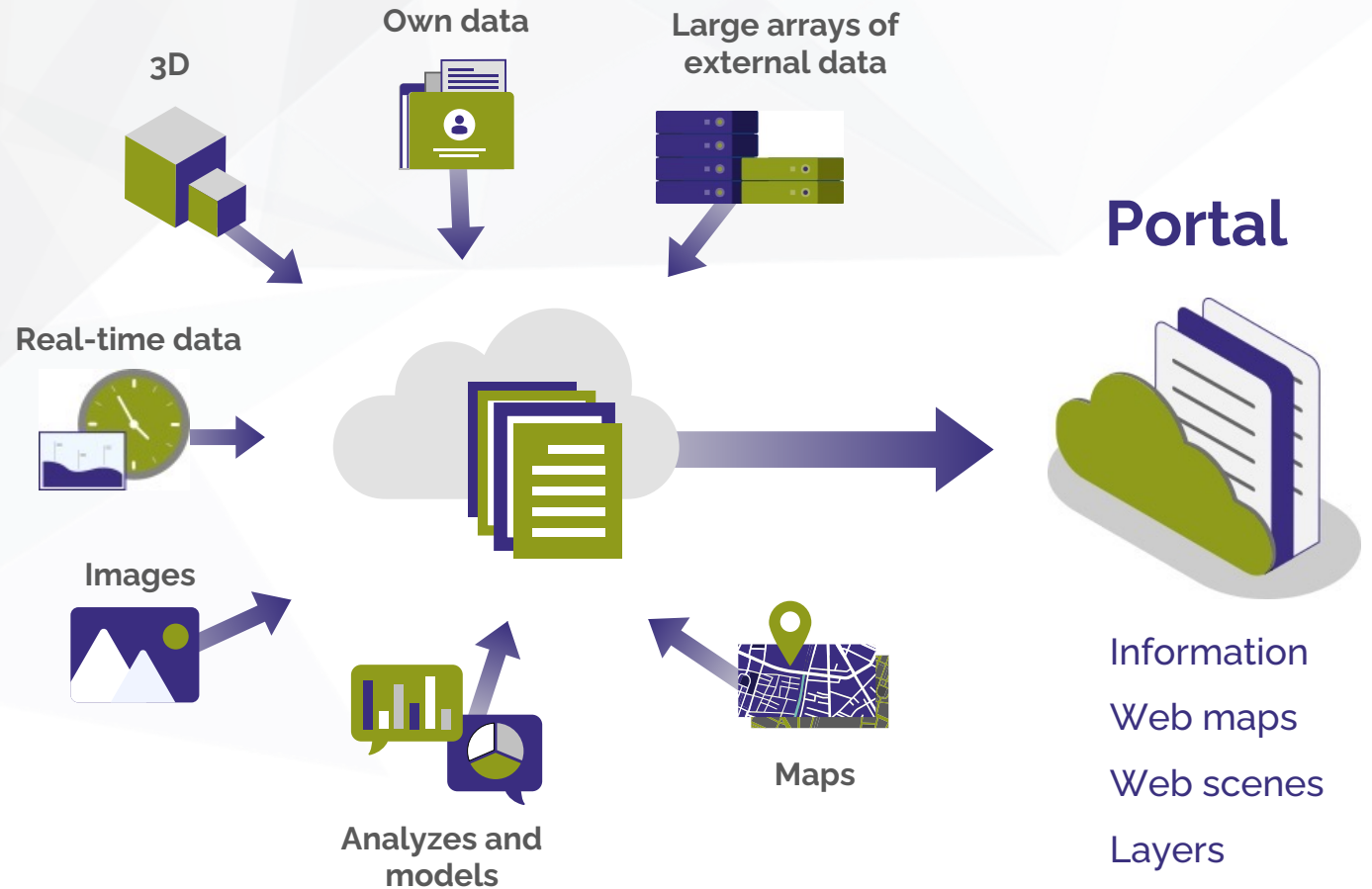
Spatial analyzes can be used to study objects and their interaction depending on their location on the earth's surface. Very often whole models of phenomena are created, with which future forecasts are made, current decisions are taken or past moments and events are analyzed.



- Innovative complete GIS platform with exceptional functional capabilities;
- Sets the direction and standards in the development of GIS;
- It is used by more than 50,000 institutions;
- From thousands of universities, schools and scientific institutes.



- GIS based on cloud technology;
- **Web GIS** - communicates via the Internet between servers and clients;
- Uses an **internet browser**;
- Serves for **web mapping** and performing **spatial analyzes**;
- It is used for **2D** and **3D data**.



View and visualize geographic information;

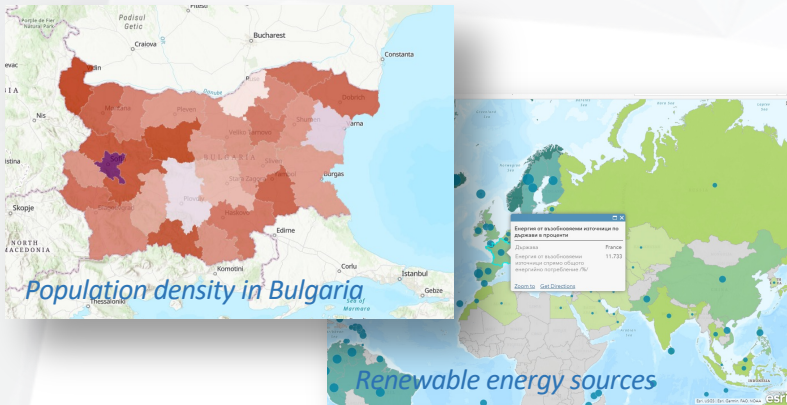
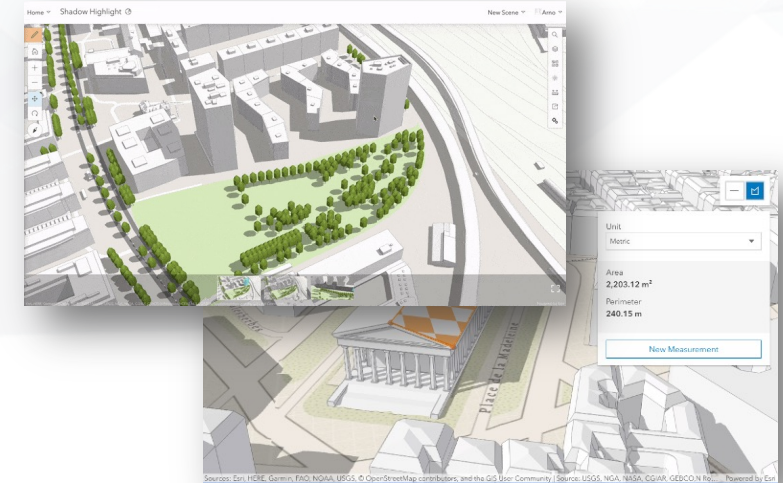
Create geographic information;

Set up fast maps;

Discover spatial connections.

**Map Viewer
2D**

**Scene Viewer
3D**



- **Explore** the Earth's illumination from the sun;
- **Explore** existing 3D models of cities;
- Make measurements in 3D.



NAVTECH GROUP

1700 Sofia, Bulgaria
5B, Vitosha District (GAMA Residence)
Ground Floor - Office 3

Fax: +359 2 439 6681
Phone: +359 2 439 6680

www.navtech.net

NAVTECH SUISSE

CH-6301, Zug, Suisse
137 Baarerstrasse,

Phone: +41 78 625 33 17

www.navtech.net