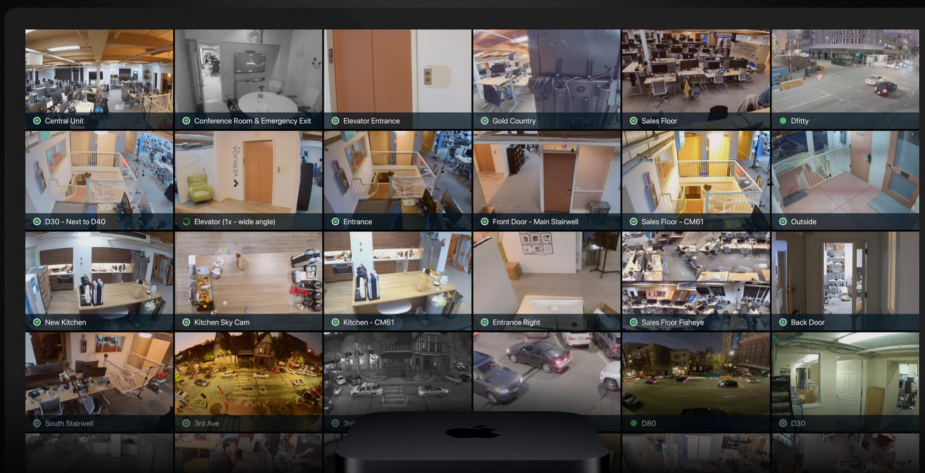




# VX51 Viewing Station

Optimized For Live Viewing



## Overview

The VX51 is a dedicated device that streams up to 180 camera feeds (36 cameras per page, up to five pages) simultaneously to any display with ultra-low latency, crisp video playback, and customizable layouts. Built on the powerful Mac mini™ platform, the VX51 is the viewing platform of choice for customers with mission-critical real-time viewing requirements.

### Administrator Managed Device

Admins remotely manage the VX51, selecting video feeds to display and customizing layouts. Non-admin viewers do not need accounts, cannot access historical footage, and cannot modify display settings.

### Plug-and-Play by Design

Simply connect the device to your network and display and it's ready to stream. Zero local configuration needed.

### Stable and Resilient

Streams play continuously without interruption for both local and remote streaming. There is no need to reset the device or relaunch a browser or application – streams restart automatically after a power outage.

### Supported by Verkada

Admins configure the VX51 in Command, just like their cameras. The VX51 is backed by our industry-leading 10-year warranty and the dedicated Verkada customer support team.

## Key Features

- Stream up to 180 cameras across five pages on a single display
- Ultra-low latency with crisp video playback
- Administrator managed device without requiring additional accounts
- Plug-and-play with zero local configuration needed
- Automatically restarts after a power outage
- 10-year warranty



## Ordering Information

Product Name	Description	Cost (MSRP)
VX51	VX51 Viewing station hardware	\$1,999
LIC-VX-1Y	Verkada 1 Year Viewing Station License	\$499
LIC-VX-3Y	Verkada 3 Year Viewing Station License	\$1,299
LIC-VX-5Y	Verkada 5 Year Viewing Station License	\$1,999
LIC-VX-10Y	Verkada 10 Year Viewing Station License	\$3,999

## Tech Specs

Supported Displays	One display per station	Connectors	HDMI 2.0 Port, Gigabit Ethernet Port
Number of Streams	Up to 36 cameras (local and remote)	Connectivity	10/100/1000BASE-T Gigabit Ethernet (RJ-45)
Processor	3.6Ghz quad-core Intel Core i3	Operating	Line voltage: 100–240V AC Frequency: 50Hz to 60Hz, single phase Maximum continuous power: 150W Operating temperature: 50° to 95° F (10° to 35° C) Storage temperature: -40° to 116° F (-40° to 47° C) Relative humidity: 5% to 90% noncondensing Operating altitude: tested up to 16,400 feet (5000 meters)
Graphics	Intel UHD Graphics 630		
Dimensions	7.7 x 7.7 x 1.4 in		
Weight	2.9 lbs		
Display	Up to 4096 x 2160 resolution		
Included Accessories	HDMI cord, setup guide, power cord		

## Industry-Leading 10-Year Product Warranty

All Verkada hardware purchases are backed by our 10-year limited warranty. For more information, visit [verkada.com/support/terms-of-sale](https://verkada.com/support/terms-of-sale).

For more information and to learn about a free 30-day trial, contact [sales@verkada.com](mailto:sales@verkada.com).