

glee

Fresh
Inspiration
e-Guide



Visit us at www.gleebirmingham.com

11-13 September 2017

CONTENTS

2. Contents

3. Introduction

LANDSCAPING & GARDEN DECORATION

5. Grange

6. Bathgate Silica Sand

7. Creekwood

8. The Pot Company

9. Terra Style - Terra Plast

10. Eden Greenhouses

11.. Think Outside

12. Viomes

13. Apta

GARDEN CARE

15. Hug Rug

16. Bord Na Mona

17. K.E.Enterprises

18. Briers

19. Whitefurze

HOME, GIFT & CLOTHING

21. Stormafit

22. Wild & Wolf

23. Boot Buddy

24. D. O'Reilly & Sons

25. Florelle Import Co



INTRODUCTION



WELCOME TO THE THIRD EDITION OF FRESH INSPIRATION

Your March edition of Fresh Inspiration focuses on new exhibitors and products from Garden Care, Landscaping & Garden Decoration and Home, Gift & Clothing. Browse show sectors and start making your wish list.

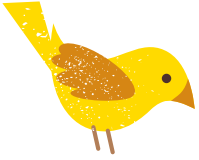
A NOTE FROM MATT:



"Welcome back to issue 3 of Fresh Inspiration! Spring is in the air and we have picked out some great new products that are worth exploring, we have tried to put together a group of products that feature across key categories. All the companies featured along with their products will be exhibiting at Glee 12-14 September.

Fresh inspiration will be running each month leading up until the main event where you can see these products live and meet the suppliers live. If you are an exhibitor that would like feature your new products in here please email fernanda.pinto@i2ieventsgroup.com

Matthew Mein
Event director



LANDSCAPING & GARDEN DECORATION

This is one of the core areas of the show and is packed with the biggest garden landscaping brands. Products in this area include but not limited to: aggregates, decking, outdoor lighting, play structures, water features and much more.



GRANGE



Established in 1868, Grange has 147 years of experience and an established reputation for quality and excellence in the fencing industry. Building on the successes of the past, they strive to push the boundaries in the garden world. Quality and choice, backed by the highest level of customer service is what they stand for. Classical designs, contemporary trends or urban living, Grange endeavour to bring you products that define your garden.



www.grangefen.co.uk
sales@grangefen.co.uk
01952 588 088



BATHGATE SILICA SAND



For over 60 years Bathgate have been producing high quality silica sand for a variety of specialist use in Industry, Foundry, Equestrian, Agriculture, Amenity and Landscape. Bespoke turf dressings, bunker sand and root zone material are produced to market leading standards and are widely used throughout the sport and leisure industry.

Their range of products has been formulated to the highest standards to satisfy the needs of professional growers, landscapers and dedicated garden enthusiasts.

Using the finest quality ingredients available and with vigorous testing and monitoring procedures assures superb and consistent product quality. The retail products are formulated with carefully selected ingredients to optimise performance, attractively packaged and offered in convenient bag sizes to maximise sales potential.



www.bathgatesilica.co.uk
A.Peers@bathgatesilica.co.uk
01270 762 828



CREEKWOOD

Creekwood offers a fresh and colourful garden products. Popular products include Wind Spinners, Solar Garden Stakes and Metal Bird Statuary.



The Wind Spinners create a mesmerizing effect with double & triple bladed designs spinning in opposite directions, ranging from 50cm to 80cm diameter. Solar Garden Stakes add colour to the garden by day and light up at night. Made using coloured glass and gift boxed. The popular Bird Statuary come in variety of bronze or copper patina finishes. Ranging from 64cm to 115cm height.



www.creekwood.co.uk
sales@creekwood.co.uk
01403 273034



THE POT COMPANY



The Pot Company has been sourcing garden planters from around the world for over 30 years. This depth of experience has allowed them to develop a unique and varied range that features consistently popular design themes and materials with proven durability.

They are the market leader in the supply of large and small planters and containers of all shapes, colours and materials – whether for the home, amenity scheme or commercial project.



www.thepotco.com
sales@thepotco.com
01892 890 353



TERRASTYLE / TERAPLAST



With over 20 years of experience in the industry, Terrastyle provide some of the biggest names in the UK with everything from Terracotta, Terra Fibre and glazed bespoke pots & planters through to ornamentation. Now firmly established in this market Terrastyle are working with their Italian sister company Teraplast to introduce a new range to the UK.

Teraplast SPA are experts in the development and manufacture of polypropylene pots and planters and provide ranges covering the full spectrum from potting up to large statement pieces. With a good mix of traditional styles and designs and the more modern styles there is something here for every taste.



www.terrastyle.co.uk
sales@terrastyle.co.uk
01249 463495



EDEN GREENHOUSES



Eden Greenhouses are one of the longest established Greenhouse manufacturers in Great Britain. They are a successful Exporter and welcome enquiries from Export Distributors as well as UK dealers and distributors. Most greenhouses are glazed with horticultural glass which breaks into large unpredictable shards. If your greenhouse is to be sited in a public place, or where children or elderly people may be present, Eden strongly recommend that you choose the toughened safety glass (to BS6206) or polycarbonate safety glazing options.



www.edengreenhouses.com
mail@eden-greenhouses.com
01242 676626



THINK OUTSIDE

Think Outside is the creator of remarkable hand-crafted sculptures, décor and furniture for homes and gardens or as cherished gifts. All of Think Outside's products are carefully crafted and designed with impeccable detail and built with integrity to bring joy into people's lives.

Founded by Aaron Jackson in 1998, Think Outside has been committed to creating a global community by up skilling craftsmen in developing countries, whilst continually pushing the boundaries of art through innovation. Still today, the unique pieces within each collection are custom designed by Aaron and crafted individually by artisans at the Think Outside workshop operating out of Vietnam -the epicentre for building the thousands of pieces each year.



www.thinkoutside.biz
sales.uk@thinkoutside.biz
+61 2 8824 4488

VIOMES



VIOMES has more than 40 years of experience in the field of plastic household and garden articles. The new collections of pots are great in quality but still light, elegant but functional, decorative but affordable really suitable for every internal or external space. Patented designs both for the aesthetical result but also for their functionality the new pots are an example of creativity and excellence focusing on everyday living making our environments bright and colorful.



www.viomes.gr
es@viomes.gr
+302106646231



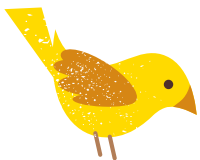
APTA

Over its 35-year history, Apta has built an enviable reputation as one of the most dynamic suppliers in the garden trade, thanks to a stream of innovation which has inspired gardeners. A stream of innovation from Apta has led to strong growth in each of the past five years - and has seen the company become the pots and planters supplier of choice for more and more leading garden centres.



www.apta.co.uk
sales@apta.co.uk
01233 621090





GARDEN CARE

The largest of the show sectors, Garden Care is home to the most comprehensive range of garden care products including but not limited to: bird food, bulbs and seeds, composts (incl. peat-free), decorative coatings and treatments, garden tools and accessories and much more.



HUG RUG

Wave goodbye to muddy floors by giving your home a practical yet stylish update with fabulous eco-friendly barrier mats from British manufacturer and retailer, Hug Rug.

Designed to provide an everyday solution for busy households and high traffic zones like hallways, bathrooms or conservatories, Hug Rug's high performance mats and runners combine 90% recycled cotton from the clothing industry and advanced, innovative microfibre that cleverly traps up to 95% of dust, wet, mud and dirt.



www.hugrug.co.uk
info@hugrug.co.uk
01484863227

BORD NA MONA

Bord Na Mona is the partnership of nature and technology – respect for the former as their greatest resource and investment in the latter to safeguard our future. With this in mind, Bord na Móna UK is committed to supplying the best quality, most fit for purpose peat-free and peat-reduced growing media, soil improvers and natural, sustainable fuels. And to fulfilling the home and garden needs and aspirations of us all – consistently great results, absolute reliability and a clean, sustainable future. Winter Fuels is positioned as a convenience-led range, the emphasis is very much on a quick and easy pick up solution for consumers looking for a real fire romance and aesthetics, a cosy night in or a focal point for entertaining.

There are eco friendly products for real fires, stoves and chimineas as well as traditional house coal and smokeless.



www.thegrenergardener.com
info@grenergardener.co.uk
0800 973 555



K.E.ENTERPRISES

K. E. Enterprises is a quality conscious entity engaged in manufacturing and exporting premium quality Jute garden Leisure products. Their products started receiving great appreciation from the clients owing to their unmatched quality. They are a trusted business entity in the domain of Jute.

They believe in delivering high quality products to their customers who are spread in different parts of the world. In order to retain their market reputation, they don't compromise with the quality of their Garden products. We deliver what we commit and never commit what lies beyond our ability and business endeavor.



www.kees.co.in
export@kees.co.in
08048065985





BRIERS

Combining quality and style with outstanding value for money their range is available from Garden Centres and retailers.

Whether you are looking for a classic leather gardening glove, the latest in innovation and technology glove material or one of our gorgeous cotton designs they offer a comprehensive range of gardening gloves in an assortment of sizes.

The quality tested footwear range offers traditional wellies or for the fashion conscious leading welly designs in our new Jelly Wellies. With clogs, shoes, short wellies and ankle boots whatever you are looking for you will find a tempting selection of Briers footwear products.



www.briersltd.co.uk
sales@briersltd.co.uk
01963 269077





WHITEFURZE

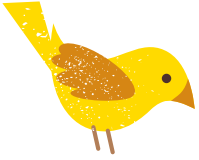
Whitefurze Ltd was formed in 1978 by owner and Managing Director, Philip Lanni. The company has grown from selling a small range of plastic consumer products to a successful and dynamic business with comprehensive ranges in the Food Storage, Gardening, General Storage, Housewares, and Hardware sectors.

They think that gardening can be very rewarding and enjoyable when you have got the right tools for the job. Whitefurze garden accessories are designed to help you make the most of growing and nurturing your plants.



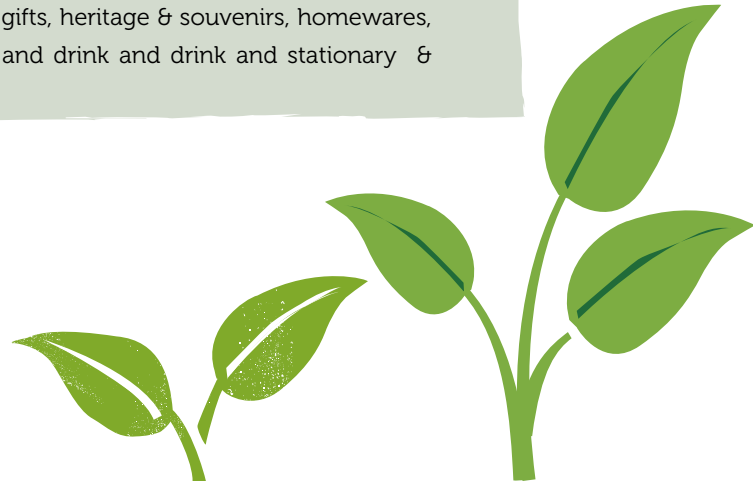
www.whitefurze.net
info@whitefurze.net
024 76 716915





HOME, GIFT & CLOTHING

As the worlds of high-end, fast moving fashion design and garden retailing align ever closer, the home, gift and clothing exhibitors at Glee are ever increasing. Offering a range of clothing & footwear, confectionery, decorative accessories, games, toys & books, gifts, heritage & souvenirs, homewares, jewellery, picnicware, seasonal decorations, specialty food and drink and stationary & greetings cards.



STORMAFIT

Started up from inside a garden shed, Stormafit is a family run business based in the countryside of Suffolk that continues to grow, even today.

Over the course of 28 years, Stormafit has aimed to provide fashionable, reliable, high quality clothing and accessories whilst maintaining affordability and functionality for both Men and Women.

Stormafit now supply over 250 centres Nationwide with a wide range of products across two iconic and trusted brand names; JackDaw and Jane Austin.

Stormafit boast a variety of products that are made in Britain, as well as an ever expanding Italian range, designed and manufactured in the country famous for high quality, iconic fashion.

With products ranging from Walking Sticks to Wellington Boots, Handbags to Waterproof Coats and Purses to Shirts and Casual Tops, you are sure to find something for every occasion and all weather at Stormafit.



www.stormafit.co.uk
enquiries@stormafit.co.uk
01284 811 365



WILD & WOLF

Everything they do is centered around design first and foremost and while the collection may be varied in terms of formats there is an underlying theme and style to everything they do.

Renowned designer Orla Kiely has extended her collection with Wild & Wolf with an appealing new range for spring/summer 2016. Continuing with her distinctive and popular floral designs, the collection showcases a colour palette of warm blues and neon greens. Including all gardening essentials such as Potting Gloves, Secateurs, a Trowel & Fork set and Garden Kneeler, the range also features an eye-catching yellow Watering Can. New for 2016 are Grow Your Own Herb Pots, with a choice of five pot designs and five different herbs to grow – making the perfect gift for keen gardeners.



www.wildandwolf.com
sales@wildandwolf.com
01225 789909



BOOT BUDDY

In the wise words of Bill Gates, "I choose a lazy person to do a hard job. Because a lazy person will find an easy way to do it."

Alas The Boot Buddy was born. The combination of a young boy's laziness and a spark of genius led to the creation of The Boot Buddy, solving a problem which affects all age groups.

The Boot Buddy is an example of home grown innovation, designed by a young British inventor. Engineered and produced by one of Britain's leading manufacturers, solving problems on its own turf before conquering the world.

The Boot Buddy has been designed to uphold high British standards of innovation, quality and durability known and respected worldwide.

The Boot buddy is aware of the negative impact that excess human consumption has on the environment. One vital resource for humanity is water. Therefore The Boot Buddy aims to use water in a wise and eco-friendly way.

The Boot buddy not only cleans footwear efficiently but it helps to enhance the life span of the boot. It does this by keeping mud at bay and not allowing it to set in, therefore not ruining the colour, texture and appearance of the boot.



www.thebootbuddy.co.uk
info@thebootbuddy.co.uk
07446986544



D. O'REILLY & SONS



With over 50 years' experience in distribution, D. O'Reilly & Sons bring first-rate quality, good value products to Department stores and Pharmacies in Ireland.

Building connections that will last, they hope to create and facilitate opportunities for growth in the UK Garden Centre Market.

Launched at the Spring Fair this year, they had a fantastic response for their fantastic new ranges from the creators of Dickens & Hawthorne Australia, which they will be showcasing at Glee 2016.

www.doreillyandsons.ie
nikki@doreillyandsons.ie
035312930995



FLORELLE IMPORT CO



For over 25 years Florelle have been sourcing, importing and delivering realistic artificial flowers, trees, plants and Christmas decorations to the gift trade across the UK, Ireland and parts of Europe.

During this time we have built a reputation for exceptional value and reliability. We use our experience and expertise to ensure we can provide the very latest designs and accurately predict shifting trends in the market. Our attention to detail in our systems and business practice is matched only by the unrivalled quality of the products themselves. What nature inspires, Florelle aims to deliver.



www.florelle.co.uk
sales@florelle.co.uk
01484353000





12-14 September 2016
NEC Birmingham UK

WISH LIST

WHY NOT CREATE YOUR OWN GUIDE TO
GLEE USING THE WISH LIST FUNCTION ON
OUR NEW WEBSITE.

[CLICK HERE](#)



Get Your Free Ticket Now

