

glee

Fresh  
Inspiration  
e-Guide



Visit us at [www.gleebirmingham.com](http://www.gleebirmingham.com)

11-13 September 2017

# CONTENTS



- |                                     |                        |                           |
|-------------------------------------|------------------------|---------------------------|
| 3. Introduction                     | 16. Natural Soil       | 28. SeedCell              |
| 4. Kadai Firebowls by Wilstone      | 17. Viva Green         | 29. Tracey Russell Design |
| 5. Hamac Trading Company            | 18. Roundup            | 30. Staedtler             |
| 6. UNNI Wood - Fire Ovens           | 19. EAZYBBQ            | 31. Southalls             |
| 7. Hum Flowerpots                   | 20. Batavia            | 32. Primeur               |
| 8. DJ Turfcare                      | 21. Botanical Cushions | 33. Buttacup              |
| 9. Bord na Mona                     | 22. PotPal             | 34. Soil Renew Ireland    |
| 10.. Woodlodge                      | 23. Belstane           | 35. Little Babas          |
| 11. Jeyes                           | 24. Padamo             | 36. Beefayre              |
| 12. NAP Brands                      | 25. Whitefurze         | 37. Primus                |
| 13. Scheurich                       | 26. Compass Group      | 38. Swann                 |
| 14. The Walsall Wheelbarrow Company | 27. Cloackrooms        | 39. Vitax                 |
| 15. Fast Grow Seaweed Fertilisers   |                        | 40. HTA                   |



# INTRODUCTION



## WELCOME TO THE NINTH EDITION OF FRESH INSPIRATION

Get ready for Glee! This is the last edition of fresh inspiration before the show, brimming with the latest products from eight dedicated show sectors, so make sure you take a note of the products you want to see onsite.



### A NOTE FROM MATT, OUR EVENT DIRECTOR:

"Welcome to the 9th issue of Fresh Inspiration. With Glee coming up tomorrow, take a look at your e-guide and prepare yourself for the biggest and boldest garden and outdoor living event yet. An insight into the latest products and freshest ideas awaits you!

We look forward to welcoming you all at Glee and If you haven't registered for you free ticket please log onto [www.gleebirmingham.com](http://www.gleebirmingham.com)."

**Matthew Mein**  
Event director

# KADAI FIREBOWLS BY WILSTONE



The Kadai Firebowl is a unique, handcrafted fire bowl and barbecue in one, made using recycled materials by skilled artisans in India. Use as a barbecue with our range of award winning accessories, then simply lift out the grills and you can use as a stunning fire bowl.



# HAMAC TRADING COMPANY



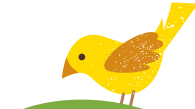
# UUNI WOOD - FIRE OVENS

Uuni is a product design company built around their flagship product the revolutionary Uuni 2S wood-fired oven. Uuni 2S reaches temperatures of 500c and cooks amazing pizzas in less than 60 seconds.

Uuni fits in any outdoor space and is portable. It runs on fire and sustainable wood-pellets, creating food with a delicious flavour. Uuni is not just for pizza either and is great for meat, roast veggies, fish, desserts and more. Uuni seeks to democratise wood-fired cooking.



[www.uuni.net](http://www.uuni.net)  
[hello@uuni.net](mailto:hello@uuni.net)  
07971 462103





# HUM FLOWERPOTS

The new Hum Flowerpot patterns are inspired by Japanese and botanical prints, and make a fresh new addition to the range. New Spring and Christmas designs are also being unveiled at the shows for pre-ordering.

Hum pots have been getting excellent reviews from consumers, with particular praise for the beautiful patterns, high quality and vibrant colours. They are designed and made in Britain out of polypropylene, and are manufactured with UV inhibitors to prevent fading. Durable and multi-purpose, they can also be used in a variety of ways from ice buckets to storage containers. They have a 5L capacity and are 22cm tall by 22.5cm wide at the rim.



[www.hum-partnership.com](http://www.hum-partnership.com)  
[hello@hum-partnership.com](mailto:hello@hum-partnership.com)  
03302 233414

# DJ TURFCARE



DJ TURFCARE is the sole importer and distributor of Viano organic lawn fertilisers. Viano, of Belgium, produce the award-winning MO BACTER, a slow-release lawn fertiliser that destroys moss and eliminates the debris by bacterial action. No raking required. It is stocked by more than 100 garden centres in the UK.

As leading experts in lawncare, DJ Turfcare also supply Atom Edgers and Bushranger Edgers - for both domestic and professional use.



[www.djturfcare.co.uk](http://www.djturfcare.co.uk)  
[sales@djturfcare.co.uk](mailto:sales@djturfcare.co.uk)  
01483 200976





# BORD NA MÓNA



Bord na Móna UK has invested further in its growing media range with new products and pack sizes. Now also available in convenient 10L and 20L packs with handles, the extended Bord na Móna Growise growing media range is designed to suit all needs, from indoor plants to the bigger garden. A new 50 litre premium multipurpose with high peat content joins the existing peat-reduced through to peat-free multipurpose selection.

There are also seven new specialist blends - 10 litre Cactus and Bonsai, 10 litre Orchid, 10 litre Citrus, 10 litre Houseplant, 20 litre Bulb, a 25 litre John Innes Ericaceous and a 25 litre Lawn Soil. There is also a new 70 litre Chunky Chip Bark being introduced to the existing Bord na Móna Growise mulches range.





# WOODLODGE



Woodlodge is a leading supplier of garden pots, with a reputation for excellence and expertise in the design and distribution of gardenware and horticulture products. The family businesses has been trading since 1987, prioritising quality and end-to-end customer service. Woodlodge is proud to hold a partnership with the National Trust, distributing products to over 2,000 garden centres and retail outlets nationwide.



[www.woodlodge.co.uk](http://www.woodlodge.co.uk)  
[pots@woodlodge.co.uk](mailto:pots@woodlodge.co.uk)  
01666 501000



# JEYES



Jeyes Ltd is a UK based manufacturer, specialising in Outdoor Cleaning. It began in 1875, when John Jeyes developed his liquid disinfectant. 140 years later, his formula is still used to make the classic Jeyes Fluid.

Granted the Royal Warrant in 1896, they are still proud to supply cleaning solutions to the UK's Royal Household.

Today, you will find a whole range of clenaing products available from Jeyes, to help keep every aspect of your outdoor areas clean and disinfected.



[www.jeyes.com/en-gb/home](http://www.jeyes.com/en-gb/home)  
[contact@jeyes.com](mailto:contact@jeyes.com)  
01223 269059

# NAP BRANDS



STANLEY® is the worlds most recognised hand tool manufacturers and at Glee this year NAP Brands will be exclusively launching a comprehensive range of hand and petrol garden tools under both the STANLEY® and STANLEY FATMAX® brands.

Designed to perform and aimed squarely at the discerning the petrol garden range will deliver revolutionary advances in starting technology and economy. Innovation runs throughout the offer and on centre stage will be the revolutionary 'virtually unkinkable' hose from STANLEY FATMAX. This professional grade hose features PolyFusion™ Technology making it extremely light and quick connect ensures compatibility with the wider market.



[www.napbrands.co.uk](http://www.napbrands.co.uk)  
[sales@napbrands.co.uk](mailto:sales@napbrands.co.uk)  
01926 482880



# THE WALSALL WHEELBARROW COMPANY

The innovative Barrow-in-a-Box range offers an extensive choice of easy-to-assemble wheelbarrow solutions for every application. The new range extension will include space saving, self-assembly versions of the company's popular galvanised Twin Barrow and hugely successful Duraball model.

With high customer demand for next day delivery, the company now offers flexible customer support, ensuring speedy delivery within 24 hours of order placement.



[www.thewalsallwheelbarrow.co.uk](http://www.thewalsallwheelbarrow.co.uk)  
[sales@thewalsallwheelbarrow.co.uk](mailto:sales@thewalsallwheelbarrow.co.uk)  
01902 304002



# FAST GROW SEAWEED FERTILISERS



Produced in Ireland, with unique blends of locally sourced Seaweed and Chicken Manure, Fast Grow Seaweed Fertilisers aims to provide a top quality range of NATURAL garden and plant fertilisers by:

Providing a range of high end formulas that would outperform any other product in the stores today.

Testing to ensure that Fast Grow could be used effectively all year round.

Revamping the packaging making our products more attractive to consumers and massively reducing waste.

Driving down costs ensuring maximum returns for retailers.

Produced in Co Down, Northern Ireland, to ensure top quality all our ingredients are sourced in Ireland.

# NATURAL SOIL

VFS-1 is an Organically Certified Liquid Fertiliser being introduced by Natural Soil Ltd.

As a result of estimated food shortages over the next 20 years, we have developed a user friendly liquid fertiliser that increases yields in a safe and sustainable way. We invite and encourage you the 'Home gardeners and Allotment growers' to start growing your own fruit and vegetables using our organically certified product, VFS-1 and enjoy the benefits!

Plants, like humans, need a balanced diet to remain healthy and productive, which is determined by the condition of the soil. Therefore, if the soil is healthy then anything grown in it will be healthy.

VFS-1 can be used to:

- \* Grow your own fresh fruit and vegetables at home
- \* Create blooming flower beds
- \* Have chemical free healthy lawns

Coverage: 1 Litre of VFS-1 will be sufficient to cover 22,000 sq. ft. or 1/2 Acre.

[www.naturalsoil.ca](http://www.naturalsoil.ca)  
[ron@naturalsoil.ca](mailto:ron@naturalsoil.ca)  
+1 905 751 1086



# VIVA GREEN



Vivagreen Group has been developing and manufacturing world-class, eco-friendly products since it was set up by the founding engineers in the early 1990's.

VivaGreen is a knowledge-based company specialising in putting the power of nature to work in a home, garden and workplace through advanced products like GreenSax compostable waste bags and MossOff the non-biocide moss and algae remover.

[www.vivagreengroup.com](http://www.vivagreengroup.com)  
[office@vivagreengroup.com](mailto:office@vivagreengroup.com)  
353 1 43 66 314

# ROUNDUP



Roundup is launching its newly designed Pump N Go 5.0L that allows up to ten-minutes of controllable spraying, and features improved packaging for easier storage for both retailers and customers. Also new for 2017, Tough Roundup Gel is ten times stronger than Original Roundup Gel, perfect for tackling tree stumps and deep-rooted, woody perennial weeds with the easy to use applicator.



[www.roundup-garden.com](http://www.roundup-garden.com)  
[gemma.bryan@hroc.co.uk](mailto:gemma.bryan@hroc.co.uk)  
01483 410334.

# EAZYBBQ



EAZYBBQ is a new company with a unique product.

Their Oak Charcoal is 100% ecological. It is a clean product, easy to transport, store and display. It is easy to light without any chemical additives your BBQ is ready to use in approximately 20 minutes. The quality and high calorific value of the green oak gives a long lasting burn (up to 2 hours) and preserves the taste and flavour of food.

The boxes optimise space and are ideal for display in shops.







# BATAVIA



Young Dutch-based company Batavia has a range of innovative products for the garden, DIY and professional use. Founded in 2009, Batavia is rapidly expanding forming partnerships in the European and international markets. Their range includes everything from power tools to indoor & outdoor products.

One of their innovative products on the market is the 4Grill which allows you to enjoy cooking and eating outside all year round. Shaped like a barrel, the portable 4Grill can be used to grill, smoke or cook your meals, and can even be used as a fireplace. Feel the difference with Batavia.



[www.batavia.eu](http://www.batavia.eu)  
[info@batavia.eu](mailto:info@batavia.eu)  
+31 522 820201



# BOTANICAL CUSHIONS



Botanical Cushions design, manufacture and retail a range of luxury Outdoor Cushions all with a strong botanical theme. The unique weather resistant Outdoor Cushions are manufactured using a 100% waterproof Polyfibre with a hollow fibre pad. Each zipped cushion is double sided and has a complementary image on both front and back. Two looks from one cushion. Sizes available Standard (42x42cm) and Supersize (85x85cm). All completely UK Made.



[www.botanicalcushions.com](http://www.botanicalcushions.com)  
[hello@botanicalcushions.com](mailto:hello@botanicalcushions.com)  
01539 730880



# POTPAL



Pot Pal products are unique in design and are manufactured using plastic injection moulding to produce a product with a distinctive and attractive appearance. Their products are available in a choice of colours and inlaid with beautiful feature Mexican style artwork.

Their range includes terracotta and plastic plant pots in various sizes. An added bonus is that ground frost, snail and slug problems are greatly diminished. Pot Pal is lightweight, portable, weatherproof, maintenance free and a great space saver too. All they products are made from 100% recyclable material.



[www.potpal.co.uk](http://www.potpal.co.uk)  
[pot-pal@outlook.com](mailto:pot-pal@outlook.com)  
07903 131180





# BELSTANE

Belstane Ltd are premium distributors in the UK & Ireland outdoor and lifestyle sectors. Belstane Ltd operate to bring brands to the marketplace with a distribution strategy and go to market plan, using their in house sales, marketing, finance and distribution departments working out of their Derby & London offices.

Belstane Ltd currently distribute The Original Muck Boot Company, Spats Boots, Manhattan Portage & Mocks to the UK & Ireland outdoor & lifestyle sectors.



[www.belstane.com](http://www.belstane.com)  
[Genevieve.Preece@belstane.com](mailto:Genevieve.Preece@belstane.com)  
01335 372600





# PADAMO

## QUICK BOOSTER

- Blown air Charcoal Chimney Starter
- Achieve charcoal at cooking temperature within just 5 minutes
- Compatible with Charcoal Chimneys from many other manufacturers
- Ideal for the keen charcoal BBQ enthusiast

Place the QUICK BOOSTER outdoors on a flat, not flammable surface. Place and light 3-4 fire-lighters on the plate that surrounds the air nozzle. Place a chimney (the QUICK CAN is ideal but it works with chimneys from many other manufacturers) containing an adequate quantity of briquettes on top of the QUICK BOOSTER and turn on the QUICK BOOSTER. In just 5 minutes you are ready to barbecue.



[www.padamouk.com](http://www.padamouk.com)  
[enquiries@newcd.co.uk](mailto:enquiries@newcd.co.uk)  
01562 824799





# WHITEFURZE

Garden landscaping specialists Deco-Pak produce, supply and deliver a wide range of garden and landscaping products to garden retailers across the UK and Ireland. The company carefully selects products from around the world, ensuring that their quality is of the highest standard at all times. Their extensive range includes decorative aggregates, horticultural sands and gravels, natural water features, decorative paving, DIY building sands and gravel and unique birdhouses and feeders.



[www.whitefurze.net](http://www.whitefurze.net)  
[marketing@whitefurze.net](mailto:marketing@whitefurze.net)  
02476 717755

# COMPASS GROUP



At Compass Group UK & Ireland they have a strong background in retail cafés, restaurants and coffee shops and newer ventures in the garden retail market, so they are delighted to be exhibiting at Glee for the second year.

A great catering provision is proven to drive strong customer loyalty and satisfaction along with increased footfall and spend so why not work with the experts, allowing you to focus on driving your core business forward?



[www.weareinstore.com](http://www.weareinstore.com)  
[Russell.scanlon@compass-group.co.uk](mailto:Russell.scanlon@compass-group.co.uk)  
07979 702623



# CLOACKROOMS



Cloackrooms are celebrating 30 years of manufacturing fine woodwork. This unique little range of "traditional wooden furnishings" is collected and sold at the high end of the market place. Customers include garden centres, nurseries, farm and deli, country stores, department stores, cook shops, high street retailers, hardware, mail order etc. including manufacturing for other retailers.



[www.cloackrooms.co.uk](http://www.cloackrooms.co.uk)  
[cloackrooms@aol.com](mailto:cloackrooms@aol.com)  
01773 711972



# SEEDCELL



Award-Winning start-up Green Digit is set to expand its roots in the gardening retail sector with the launch of four new SeedCells and an exciting new gift range at Glee.

The product was designed to eliminate the complexities of growing plants from seed, allowing everyone from novice gardeners to green-fingered experts the opportunity to enjoy the experience of growing and eating their own fresh produce.



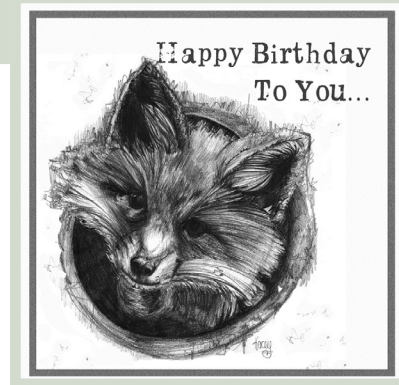
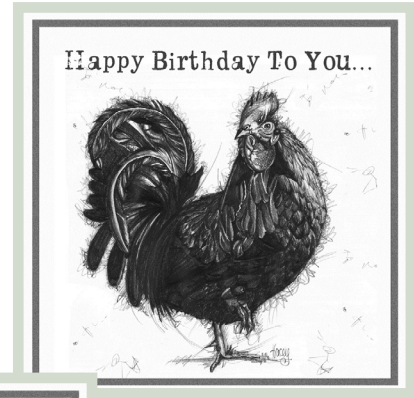
[www.seedcell.co.uk](http://www.seedcell.co.uk)  
[info@green-digit.com](mailto:info@green-digit.com)  
01913 495957





# TRACEY RUSSELL DESIGN

A greetings card company that thrives on turning Tracey Russell's designs into a beautiful portfolio of handmade greetings cards and gifts. Using Tracey's many different styles creates a series of card collections that fits to many different tastes. As a company they understand the importance of being flexible for their customers, as a result they offer their collections in different sizes, different price points and their minimum order value is lower than most. As an extra bonus to their retailers they offer a bespoke design service allowing them to create their own sentiment, perfect for regional dialect and special occasions!



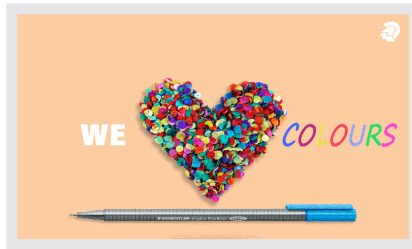
[www.traceyrussell.co.uk](http://www.traceyrussell.co.uk)  
[office@traceyrussell.co.uk](mailto:office@traceyrussell.co.uk)  
01913 732497



# STAEDTLER

With the adult colouring craze set to continue, the STAEDTLER brand is benefiting from a year-long global partnership with Johanna Basford, the world-famous artist and lifelong STAEDTLER enthusiast whose adult colouring books have topped the international best-seller lists. Johanna shot to fame with her first colouring book, *Secret Garden*, pioneering a completely new market sector. *Secret Garden* and Johanna's second book, *Enchanted Forest*, were hugely successful selling literally millions of copies throughout the world and were followed by her third book, *Lost Ocean*, is enjoying similar success.

Now, Johanna is about to launch her fourth book 'Magic Jungle' and STAEDTLER is celebrating the partnership with a series of special edition promotional packs of Noris Colour colouring pencils, triplus fineliners and triplus fibre-tips featuring Johanna's image, book and recommendations.



[www.staedtler.com](http://www.staedtler.com)  
[info@staedtler.de](mailto:info@staedtler.de)  
01656 778668



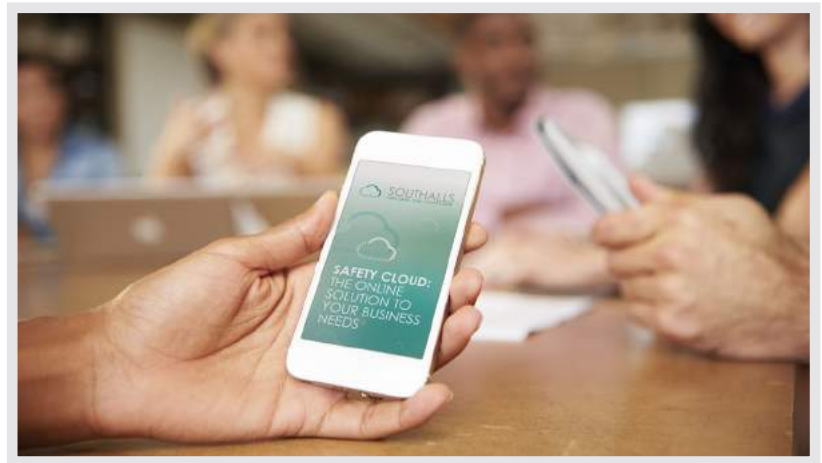
# SOUTHALLS



Southalls work with garden centres and retailers across the country to help keep their staff and customers safe and their businesses compliant with safety regulations.

With their team of commercially minded ex-enforcement officer consultants, they understand the importance of balancing business with compliance. Their Safety Cloud management software keeps you up-to-date with your due diligence tasks and keeps a track record of accidents, equipment checks, audits and more.

They won't swamp you with masses of paperwork and leave your business unchanged, but take a helping, hands-on approach to make a real, tangible difference to your business. Get in touch to find out more.



[www.southalls.com](http://www.southalls.com)  
[hello@southalls.com](mailto:hello@southalls.com)  
03452574015





# PRIMEUR

Primeur is a well-established supplier of home wares and flooring products to the British retail market and at this year's GLEE exhibition they officially launch their partnership with Multy Home. Multy Home is a world leader in manufacturing innovative, eco-friendly recycled rubber lawn and garden products.

The new products cover several categories – planters, stepping stones, garden borders and decking and are unique to the market as they are made from 100% recycled rubber tyres. They are completely eco-friendly, extremely durable and suitable for use all year-round.



[www.primeur.co.uk](http://www.primeur.co.uk)  
[info@primeur.ltd.uk](mailto:info@primeur.ltd.uk)  
01416 5235444



# BUTTACUP

Buttacup are creators of a distinct range of crescent shaped planters designed to brighten up waterbutts, fencing and other landscapes. Available in a range of colours, the company offers three distinct products including the self-watering planter, the Buttacup Bumble to encourage wildlife and the Buttacup Bloom a perfect planting companion.



[www.buttacup.co.uk](http://www.buttacup.co.uk)  
[hello@buttacup.co.uk](mailto:hello@buttacup.co.uk)  
0208 7852802





# SOIL RENEW IRELAND

Soil Renew, Compost Renew and Moss Go Lawn Renew work in harmony with nature, nurturing the life in the soil to create natural, healthy, nutrient-rich soil which in turn produces healthy, disease-resistant plants. They provide a natural boost to the system so nature can do what it does best, which is increase in diversity and abundance.

All life is interdependent and when we interfere with the balance in nature by applying fertilisers, herbicides and pesticides we change the interactions between life forms in ways that is hard to predict.



[www.soilrenewireland.ie](http://www.soilrenewireland.ie)  
[paul@soilrenew.ie](mailto:paul@soilrenew.ie)  
353 6738271



# LITTLE BABAS



Mr Bloom is the star of the hit CBeebies TV show Mr Bloom's Nursery. He is a bubbly allotment owner who teaches some important life lessons through the wonders of gardening. Mr Bloom is accompanied on his explorations by a group of lively vegetables. The Veggies consist of Joan the Fennel, Margaret the Cabbage, Raymond the Butternut Squash, Sebastian the Aubergine, and The Wee Macgregors.

Now their own 'Tiddlers' can dress up just like the nations favourite gardener and play with his new range of toys.



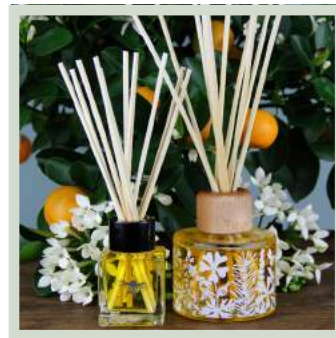
[www.littlebabastoys.co.uk](http://www.littlebabastoys.co.uk)  
[customerservices@littlebabastoys.co.uk](mailto:customerservices@littlebabastoys.co.uk)  
07703 719371



# BEEFAYRE



Beefayre is an award winning scented candle & home fragrance company, inspired by nature and the plight of the honeybee. All products are made in the UK, the natural wax candles, room diffusers, body & bath products are all adorned with flower and bee designs. Products can be beautifully displayed in pre-assembled beehive floor standing units. 3% of profits going to bee conservation.



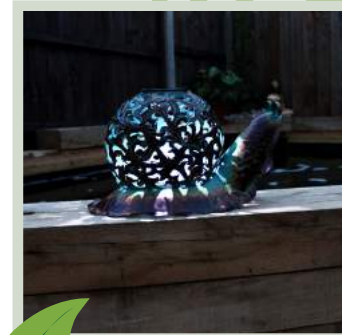
[www.beefayre.com](http://www.beefayre.com)  
[bex.hewetson@beefayre.com](mailto:bex.hewetson@beefayre.com)  
01858 434492



# PRIMUS

Supplier of unique, weird and wonderful home and garden ornaments, whose goal is to turn dull, uninspiring homes into a dwelling of pride and charm.

They are a new company with all new products that the marketplace has never seen before. They currently have over 60 different SKUs and are constantly looking for the next new product to add to their extraordinary inventory that ranges from metal garden animal sculptures, solar lights, wall art and a range of quality cast iron ornaments.



# SWANN



Swann products are easy to install, affordable and get the job done. All Swann product carries a 12mth warranty, with the option of a further 6mths by completing an insert which accompanies each kit...then there's the 24/7 support line, immediate online support to talk through any issues and help your customers where necessary. Swann also feature a small range of fun drones, as part of our Xtream Toys range...perfect for the 'pick up' Christmas gift.

- Xtream Atom II – lightning fast mini RC quadcopter: it is a powerful flying quadcopter capable of fast speeds and countless hours of indoor flying.
- Xtream Raptor Eye – RC quadcopter with the ability to shoot HD video; with onboard HD camera, is a feature rich drone perfect for inexperienced pilots. It has a compact size and lightweight construction alongside cutting-edge flying capabilities from Xtream's Easy-Fly Gyro technology. 360 degree maneuverability means users can control up/down, forwards/backwards, sideways movements and even flips, stunt tumbles and more.
- Swann Pro-Series HD 720p Home and Garden CCTV system: Easy to install, this system keeps an eye on things in HD resolution. Four cameras can be used and can record continuously for 30 days+ onto a 500GB hard drive. The cameras are fully weatherproof and enable playback of live or recorded video. There's also the option of viewing on smartphones and tablets.
- Swann Outback cam: For use in the garden, the Outback Cam is a portable HD video recorder and photo camera, great for capturing nature and keeping an eye out for unwanted intruders, day and night. It's water resistant and can be mounted to trees or flat surfaces. It will withstand temperatures down to -20°C.

[www.swann.com](http://www.swann.com)  
[uksales@swann.com](mailto:uksales@swann.com)  
02036 911 158





# VITAX



Vitax provide everything needed to make a garden grow, including a range of high quality composts, a huge selection of fertilisers, and a line-up of specialist products for the gardening enthusiast.

6X Natural Fibrous and Pelleted fertilisers, and their award winning wool slug and snail repellent Slug Gone together with Vitapot plant pots, all provide opportunities for natural organic growth, as they are all environmentally sustainable and naturally made from waste products.

[www.vitax.co.uk](http://www.vitax.co.uk)  
[marketing@vitax.co.uk](mailto:marketing@vitax.co.uk)  
01202 684141



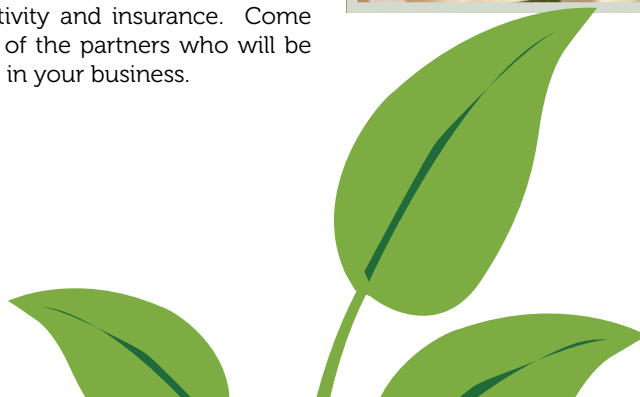
# HTA

The HTA are once again delighted to be one of the key partners of Glee 2016 and will be having two stands at the show as well as contributing content to the Glee seminars.

HTA and GCA stand - The HTA stand offers HTA members a place to learn about the benefits of their membership. Visitors can drop by and have a coffee, meet with HTA staff and learn about how to utilise their membership, the HTA Academy, HTA events, National Garden Gift Vouchers and the Garden Gift Card. The GCA will be sharing the stand so pop along and learn how both associations can help your business. (Stand: H10, Hall 20)

This year, the HTA Cost Reduction Partners will have their own stand within the show and can be found next to the Seminar Area. (Stand F51, Hall 20) The Cost Reduction Programme offers huge savings through our partner organisations with a proven track record of excellent customer service you can be confident you are getting the best deal. We can save you money on a wide range of products and services such as; credit card processing, health and safety and employment law, telecoms & connectivity and insurance. Come along to the stand to meet a number of the partners who will be showcasing how they can save money in your business.

[www.hta.org.uk](http://www.hta.org.uk)  
[info@hta.org.uk](mailto:info@hta.org.uk)  
01189 303132



# GLEE SUPPORTERS & PARTNERS





12-14 September 2016  
NEC Birmingham UK

## WISH LIST

WHY NOT CREATE YOUR OWN GUIDE TO  
GLEE USING THE WISH LIST FUNCTION ON  
OUR NEW WEBSITE.

[CLICK HERE](#)



*Get Your Free Ticket Now*

