

® PREMIUM PORCELAIN

Al Fresco

INDOORS & OUTDOORS



New Collection 2021 - 2022

Design Inspiration

Get inspired and learn how to create the perfect space to relax, entertain and enjoy.

Accessories

Everything you need to install your outdoor porcelain tiles to the highest standard.

Installation Advice

Our simple guide shows you the many ways you can install outdoor porcelain tiles.



Extend your home to the great outdoors...

Our premium porcelain outdoor tiles offer a stylish alternative to stone or concrete flagstones and our wood effect ranges create the look of high-end timber decking but with many added benefits such as good slip resistance.

Hard wearing and practical, these tiles have a 10 year guarantee, are simple to install and require no sealing - the perfect way to create a durable and low maintenance living space that's great for the whole family.

Available in a choice of 20 colours and designs, our 20mm thick porcelain tiles are perfect for outdoor living. Selected designs also have coordinating indoor tiles for seamless living spaces from inside your home and out into the garden.

Features & Benefits

Not only do Al Fresco outdoor porcelain tiles look amazing, they also have many other benefits. Tiles have been used within the home for centuries to create amazing spaces, why not extend that to the great outdoors? Al Fresco tiles are manufactured in a way that avoids all imperfections associated with natural stone and traditional paving slabs. Pressed in a raw state and heated at very high temperatures, Al Fresco tiles are stylish, strong and durable.



Uniform Thickness

Al Fresco tiles are manufactured under extremely tight tolerances ensuring an even thickness and stable surface. They also feature precision cut rectified edges for a premium finish every time.



Algae & Moss Resistant

Unlike natural materials such as stone or timber, our outdoor Al Fresco tiles are resistant to algae and moss - no need to worry about your tiles turning green and becoming slippery!



Good Slip Resistance

Al Fresco outdoor porcelain tiles have a good slip rating of R11 making them safe and practical in all weather conditions. For more information on slip ratings, see page 33.



Simple to Install

Create a traditional patio, or loose lay outdoor porcelain tiles onto grass, gravel or sand without the need for any specialist installation equipment. If you already have a solid surface, why not try our Pedestal Support System? For further installation advice, see pages 28-32.



Frostproof

Natural stone and timber is porous and allows water to enter the surface. When this freezes, this can crack the material. Durable under extreme temperatures, Al Fresco outdoor porcelain is completely frostproof.



Easy to Clean

Al Fresco outdoor porcelain tiles are extremely low maintenance. To clean, simply brush with a mix of washing up liquid and water. For stubborn stains, use the Al Fresco Residue Remover. See page 33 for aftercare advice.



Colour Bodied

Sometimes, accidents happen - but don't worry! The core of our Al Fresco outdoor porcelain tiles is colour bodied, meaning that any unfortunate small chips that may occur will barely be noticeable.



Fade Resistant

Perfect for sunny spots, Al Fresco tiles are created using high definition printing techniques with inks that will not fade or lose their colour.



Abbey Black Multi

Create an authentic black and multi-shade slate effect look, but in a low maintenance tile that won't fade or deteriorate, whatever the British weather may bring. Each tile features a varied mix of black and natural shades that are indistinguishable from real slate making it a practical and low maintenance option for a variety of outdoor spaces. Remember to always mix up your tiles prior to fixing to create a pleasing blend of shades.

Available in size 600x600x20mm outdoor
See specification table on page 34 for more information



Newby Grey Multi

Featuring a softer blend of shades than Abbey Black Multi, Newby Grey Multi is perfect for creating a relaxing and rustic outdoor space. Each tile features a varied blend of soft grey and natural shades, carefully crafted from durable porcelain to look just like natural stone but without the need for sealing or excessive maintenance. Relax and enjoy your time outdoors on a beautiful patio area, rather than investing all your time with upkeep. Remember to always mix up your tiles prior to fixing to create a pleasing blend of shades.

Available in size 600x600x20mm outdoor
See specification table on page 34 for more information

Chatsworth

The Chatsworth collection features a subtly shaded pattern with tonal flecks of stone effect detailing. Opt for the contemporary and versatile Light Grey shade, or create a bolder statement with the striking Dark Grey shade that really makes plants and foliage pop. For a softer and more natural look the Ivory shade is perfect for creating a relaxed and calm feel. Frost and fade resistant, these tiles are a practical choice for any outdoor space.

Ivory, Light Grey & Dark Grey available in sizes 600x600x20mm & 600x900x20mm outdoor
See specification table on page 34 for more information



Chatsworth Dark Grey 600x600x20mm & 600x900x20mm



Chatsworth Light Grey 600x600x20mm & 600x900x20mm



Chatsworth Ivory 600x600x20mm & 600x900x20mm



Exbury Beige 595x595x10mm & 600x600x20mm



Exbury Beige 600x900x20mm



Exbury Grey 600x900x20mm



Exbury Grey 595x595x10mm & 600x600x20mm

Exbury

Create a rustic feel in your outside space with the authentic veining and natural stone look of Exbury. This striking design has been created using high definition printing techniques that create the look of natural stone, but without the need for sealing and maintenance. Exbury is available in two shades - modern classic Grey, and traditional warming Beige. Coordinate 10mm thick tiles through to your interior spaces too for a seamless finish from garden to home.

Beige & Grey available in sizes 595x595x10mm indoor, 600x600x20mm outdoor & 600x900x20mm outdoor
See specification table on page 34 for more information

Harewood

If you love the look of natural wood or timber decking, then Harewood is the perfect collection to create a hard wearing and durable patio area. Unlike timber, our porcelain tiles do not require sealing to protect them and will not rot or become slippery in wet weather. Contemporary Grey creates a cool and stylish space, whilst the Oak shade grounds gardens and offers natural charm. Our indoor 11mm thick tiles come in a slightly smaller format to better suit interior spaces and blur the boundaries between indoor and outdoor living.

Grey & Oak available in sizes 195x1200x11mm indoor & 300x1200x20mm outdoor
See specification table on page 34 for more information



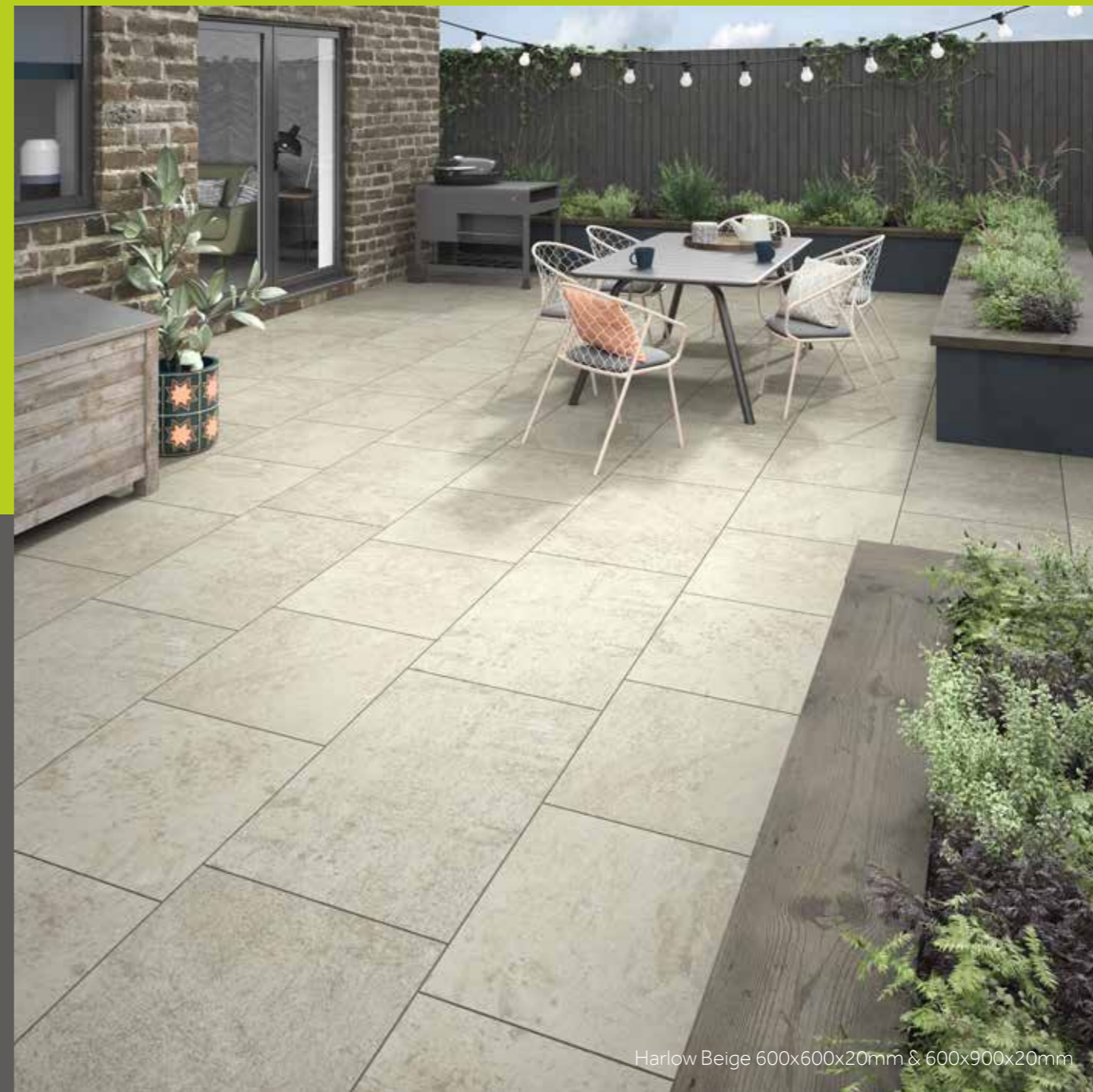
Harewood Grey 195x1200x11mm & 300x1200x20mm



Harewood Oak 195x1200x11mm & 300x1200x20mm



Harlow Grey 600x900x20mm



Harlow Beige 600x600x20mm & 600x900x20mm



Harlow Grey 600x600x20mm & 600x900x20mm

Harlow

Easy to install in a variety of ways including onto sand, grass or gravel. Harlow brings natural ambience to your outdoor space. Harlow works harmoniously with an array of exterior styles and is available in warm Beige and stylish Grey. Combine both 600x600mm and 600x900mm sizes together for an organic modular effect that will look beautiful for years to come.

Beige & Grey available in sizes 600x600x20mm & 600x900x20mm outdoor
See specification table on page 34 for more information

Adlington White

Adlington features a fresh and light white colouring mixed with traces of natural tones that's ideal for creating an illusion of space in small gardens. Coordinate with statement pops of colour and a mixture of florals for a bright and exciting space, or for a more traditional Mediterranean look add terracotta pots and deep aqua blue tones reminiscent of the sea and summer sky. Fade resistant in strong sunlight and resistive to algae and moss, Adlington will look perfect for many years to come.

Available in size 600x600x20mm outdoor
See specification table on page 34 for more information



Sherborne Graphite

In stark contrast to Adlington, Sherborne is the darkest shaded tile in the Al Fresco collection, featuring a striking black tone with an understated stone effect pattern. The deep shading of this tile creates the ideal backdrop to allow plants and foliage to really stand out. Style with shades of grey and white for an ultra-sleek monochrome look that's practical, hard wearing and low maintenance.

Available in size 600x600x20mm outdoor
See specification table on page 34 for more information





Rosemoor Sand 600x900x20mm



Rosemoor Grey 600x900x20mm

Rosemoor

Create a striking and unique look with the appearance of natural stone but in a low maintenance porcelain tile that won't fade over time. Each tile features a varied mix of natural patterns and stone-style veining that replicates the real thing. Rosemoor is available in two shades - soft and calming Grey, and warm and inviting Sand. Remember to always mix up your tiles prior to fixing to create a pleasing blend of patterns and shades.

Sand & Grey available in size 600x900x20mm outdoor
See specification table on page 34 for more information

Welford

Add a contemporary touch to your outside space with the subtle concrete style patterning of Welford. This modern design has been created using high definition printing techniques that create a look of weathered concrete, but without the need for sealing. Welford is available in three shades - dark and moody Anthracite, classic and chic Grey, and refreshing Ivory. Use coordinating 10mm thick tiles in your interior spaces too for a seamless finish from garden to home, or combine with our striking Welford Geometric outdoor porcelain tiles on pages 22-23.

Ivory, Grey & Anthracite available in sizes 595x595x10mm indoor & 600x600x20mm outdoor
See specification table on page 34 for more information



Welford Ivory 595x595x10mm & 600x600x20mm



Welford Anthracite 595x595x10mm & 600x600x20mm



Welford Grey 595x595x10mm & 600x600x20mm



Welford Geometric Grey 600x600x20mm



Welford Geometric Anthracite 600x600x20mm & Welford Grey 600x600x20mm

Welford Geometric

Looking for something a little bit different? Our Welford Geometric tiles are the perfect choice to create a unique outdoor living area. Embrace the great outdoors and create a feature floor that is sure to get your friends and family talking. Combine with Welford non-patterned tiles to create zoned areas - ideal for defining entertaining and relaxing spaces. Extremely hard wearing and simple to install, Welford Geometric tiles are the easy way to create a statement on-trend outdoor space.

Geometric Grey & Geometric Anthracite available in size 600x600x20mm outdoor
See specification table on page 34 for more information

Installation Accessories

From small and intimate patios, to large scale landscaping projects, the AI Fresco collection offers a comprehensive range of installation accessories to complete any project. If you are fixing your tiles with mortar, **Instarmac Pro-Prime Slurry** is an absolute essential to ensure your tiles bond to the base below. Use **AI Fresco Tile Protector** to create a protective seal against installation residues such as mortar and grouting compounds, and for any stubborn stains after installation, use the **AI Fresco Residue Remover**. For a perfect finish, use **Instarmac ProPave Brush-In Grout** to infill joints with minimal effort. An alternative installation method is our **Pedestal Support System** which creates an elevated patio area without the need for lots of equipment. The patio can also be easily moved around or adjusted as the tiles are not fixed with adhesive.



Slurry Primer A10200

- Provides an exceptional bond between outdoor porcelain tiles and a wet mortar bed
- Just add water on-site
- Quick and easy application
- 20kg paper bag covers 15m²*
- NBS Plus registered
- BS 7533 compliant



Brush-In Grout

- Use to fill the gaps between tiles for a seamless finish
- Fast and easy application
- Permeable - allows drainage
- Walk on in just 24 - 48 hours
- Use in all weather
- Resistant to frost and extreme weather conditions
- No waste - left over material can be re-used
- 15kg tub covers up to 25m²**



A10201
Black



A10203
Grey



A10202
Buff



Available in a handy twin pack!



Tile Protector

- Apply before grouting to create a protective seal against cement, grout & jointing compounds
- Apply after grouting to protect both exterior and interior porcelain tiles against the dirt of everyday living
- 1 Litre covers approx 25m²*



Residue Remover

- Rapid action cleaner for removing cement residues, grout stain and other similar deposits
- Suitable for exterior and interior porcelain tiles
- Use diluted or concentrated to remove a variety of stains and residues
- 1 Litre covers approx 25m²*

A10082

* Coverage is provided as a guide only and reflects typical application without any wastage. It should not be used as an exact material calculation.

** Based on 600x600mm tile, 20mm joint depth & 3mm joint width.

Pedestals

- Create a patio without the need for lots of equipment
- Pedestals allow for drainage and you can hide cables and equipment underneath
- As the tiles are not attached with adhesive, you can easily move them around
- Can be laid over any solid surface such as existing patios, concrete or balconies
- Self levelling pedestal head creates a stable surface on uneven ground
- Create a clean step front to raised patios using the edge & corner clips
- Easily adjust the patio level using the adjustment key



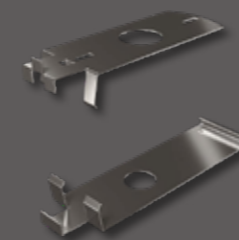
A10122 Small Pedestal
Height 25-37mm



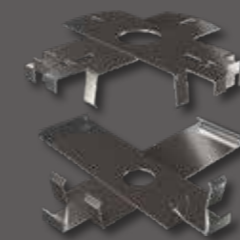
A10123 Medium Pedestal
Height 60-105mm



A10124 Large Pedestal
Height 94-169mm



A10125 Edging Clip
Base & Head



A10126 Corner Clip
Base & Head



A10127 Pedestal
Height Adjustment Key

Design Inspiration

When it comes to laying a patio area in your garden, many people choose a regular grid of square or rectangular slabs, all the same size and colour. It's surprisingly easy to create a practical yet beautiful space by playing with different textures, colours and laying patterns. Here are some simple yet creative ideas to inspire you and help you design your perfect space.

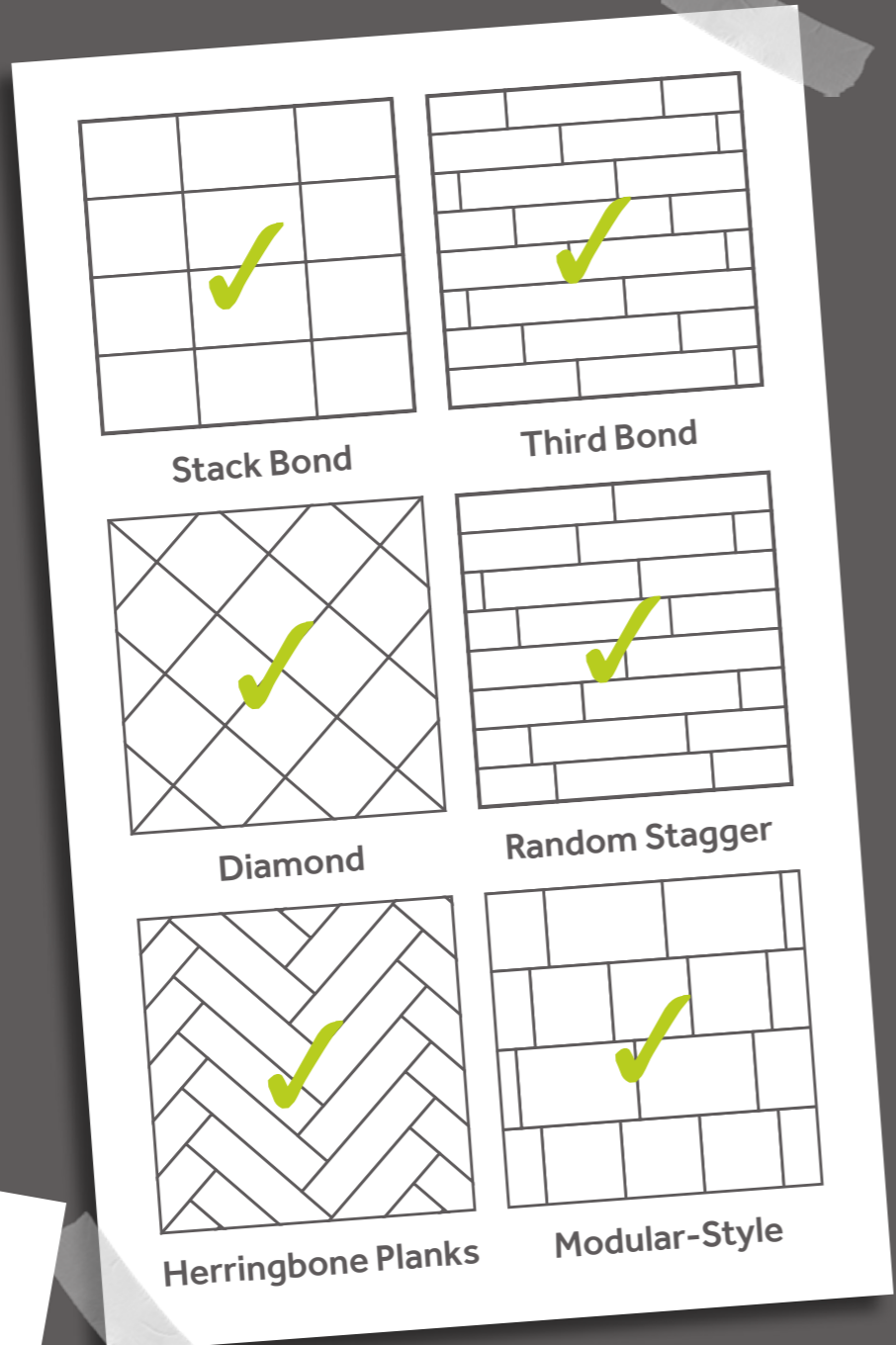
Stack bond is the simplest and most common way to lay a patio. Coordinate your grout colour for a seamless look, or use a contrasting colour to add a simple statement.

Third bond is a great way to lay planks and larger tiles for a contemporary look. Staggering the tiles in this way creates an organic feel and helps to define the shape of the tiles.

You can create an interesting twist on a simple pattern with the **diamond** layout - perfect for square tiles.

Using a **random stagger** is a great way to create a natural look and the **herringbone** pattern is a good way to create a sense of space in small areas - both of these layouts work especially well for planks.

Some of our AI Fresco collection features both square and rectangle tiles in the same design and colour - you can mix these together in rows to create a **modular-style** effect which is really effective in larger spaces.



Larger porcelain tiles inherently have a slight curvature to them, which means that fixing them in a **brick bond** layout can make the floor appear slightly uneven. Although we don't recommend it, if you try laying your tiles in a **brick bond** pattern and you're happy with the level of evenness between each row of tiles then there's no reason why you can't lay them in this way.



Zone your space



Extend your entertaining area



Create elegant walkways



Mix & match collections



Step up your style

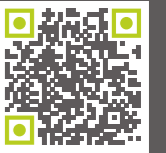


Add modular interest

Installation Advice

With the right materials and preparation, you can easily install your own AI Fresco tiles. Follow these simple steps to create your own seamless indoor & outdoor space. Installing your own AI Fresco tiles is both rewarding and satisfying but before you begin, be sure you have the correct tools and the appropriate protective equipment. Always wear gloves and safety footwear when working with outdoor porcelain tiles. Handle your tiles with care to avoid breakages and seek assistance when lifting.

Scan here with your smart phone to view our detailed installation video



How to install a porcelain patio on wet mortar



Step One

Firstly, mark out the area where you want your patio to be with posts and string. Measure the length and width of your area and multiply these values together to calculate the square meterage. If your area is not a straight forward square or rectangle, break each area down into smaller rectangles. Calculate each rectangle, then add these values together. Once you've calculated the total square meterage, multiply this number by 1.1. This adds 10% extra on to your total to allow for cuts and wastage.



Step Two

Although outdoor porcelain tiles don't need to be sealed to protect them from water penetration, you may find the installation process easier if you coat the tiles before installation with AI Fresco Tile Protector. This prevents mortar and slurry from becoming ingrained in the surface of the tiles and makes cleaning up after installation even easier. Apply to the surface of the tile with a foam roller, taking care not to coat the edges as this can prevent the grout from bonding.



Step Five

Add a layer of mortar on top of the compressed hardcore. We recommend 4 parts sand to 1 part cement.



Step Six

Place 7 litres of clean water in a suitable container. Add UltraScape Pro-Prime powder slowly and mix for 3 to 5 minutes to create a smooth lump-free slurry. Coat the underside of the first tile with priming slurry. Using priming slurry is an essential step to ensure that your tiles bond to the mortar bed.



Step Three

Before you lay your tiles, you will need to prepare the ground, by digging to a depth of around 150-200mm. Your ground should have a slight slope to allow for drainage. If you're tiling up to the edge of a house or wall, the slope should run away from the structure.



Step Four

Fill with hardcore (gravel and crushed hard rock) to a depth of 100-150mm and use a rake to distribute the mixture. Compress the hardcore using a whacker power plate, building up in layers. Remember to check that your ground still has a slight slope.



Step Seven

Place the tile into position, using a corner as a starting point - for example next to a wall or house. Press into place and use a rubber mallet and spirit level to secure and adjust the level, remembering to take drainage into consideration. Continue to lay tiles in this way leaving a 3-5mm gap between each one. Use a bucket of water and sponge to clean up any mortar or slurry as you go.



Step Eight

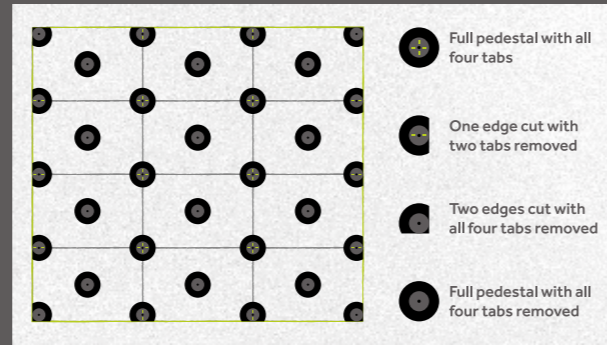
Avoid walking on your newly laid patio for a minimum of 24-48 hours to allow it to dry and strengthen. If you wish to infill any joint gaps, we recommend using ProPave Brush-In Grout designed for outdoor porcelain tiles. Use a brush to mix over the joints, gradually and evenly filling them all in. Once the joints are filled, use a pointing trowel to firm the grout into place. Add more grout if needed to create a clean and level finish.

How to create a raised patio with pedestals



Step One

Pedestals are a great way to create a patio area without the need for lots of messy equipment or tools. They can be laid on top of any solid surface such as existing patios, tarmac driveways or even balconies. It's a good idea to place a layer of weed membrane down under the pedestals so that you don't get weeds growing up through the gaps. If your sub-surface is completely solid such as a concrete slab or balcony, you can skip this step. If you don't already have a solid sub-base, you will need to create one before you begin installation.



Step Two

Before you begin, you will need to calculate how many pedestals you need. The easiest way to do this, is to measure and sketch out your patio plans. The spacer tabs in the top of the pedestal head hold up to four tile corners in place. For the edges, you will need to remove two of the spacer tabs, and for corners you will need to remove all of the spacer tabs so that the tile sits flush on top. For larger tiles you may wish to place an additional pedestal without spacer tabs in the centre for extra support.



Step Five

Continue to lay your tiles, adjusting the height and level as you go by inserting the adjustment key between the tile joints and twisting. Once the whole pedestal patio area is complete, review the level again and adjust if needed.



Step Six

If you need to create a step front, measure and cut your tile to the correct height (see page 32 for cutting advice). Temporarily remove any tiles from the main patio area that lay on top of an edge or corner and prepare the edging clips by laying one piece underneath the pedestal, and one piece on top. The top piece should slot on top of the spacer tabs.



Step Three

Prepare your pedestals for the edges and corners. For the edges, cut along the base line to remove one side. For the corners, cut along an additional base line to remove two sides and create a right angle. To remove the tabs, simply snap and pull with your fingers or pliers.



Step Four

Use a corner as a starting point such as next to a wall, house or fence, and place the first pedestal. Place three more pedestals in a grid layout to fit the measurements of your tile. Twist the pedestal by hand or with the adjustment key to alter the height. Align the pedestal head so that the cross shaped keyhole is at a right angle to the tile corner. Place the tile on top of the pedestals ensuring that the corners sit flush into the tabs.



Step Seven

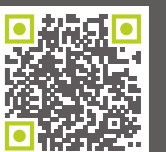
Place the cut tile piece in between the clips to hold it in place. If you wish, you can secure the edging clips with silicone or glue but this is not essential. Repeat this process for the corner clips until your step front is completed.



Step Eight

Place your tiles back in place on top of the pedestals to complete the look.

Scan here with your smart phone to view our detailed installation video



How to cut outdoor porcelain tiles



Step One

Outdoor porcelain tiles are super strong and cannot be cut using traditional hand tools. In order to minimise breakages and spoiled cuts, we recommend using a water fed cutter with a diamond blade. This will also help to minimise dust. Always wear gloves, safety footwear, goggles & respiratory protection when using cutting equipment. Handle your tiles with care to avoid breakages and seek assistance when lifting.



Step Two

Measure and mark a line where you would like to cut the tile. Cut from the top surface with the blade running at half-revs. Bring the blade into contact with the tile. As the blade bites the tile, increase the revs if necessary and progress along the marked line. Ensure the blade is water fed throughout and remains evenly balanced. Do not attempt to plunge the blade through the tile in one go - progress steadily and repeat the process until the tile is cut.

Aftercare



Clean & Protect

Maintaining your porcelain tiles is easy, simply sweep away any loose dirt regularly, and brush with warm soapy water for an extra clean as and when needed. Outdoor porcelain tiles do not require sealing, however you may wish to apply AI Fresco Tile Protector after grouting to protect your tiles against the dirt of everyday living.



Stains & Residues

For any mild stains and residues, dilute 1 part AI Fresco Residue Remover in 4 parts water. Dampen a cloth or sponge and wipe thoroughly. For tougher stains and residues, dilute 1 part AI Fresco Residue Remover with 1 part water. Apply liberally over the surface of the tile and agitate with a scrubbing brush. Leave for 5-10 minutes before rinsing with clean water. For extremely stubborn stains, use undiluted Residue Remover and agitate with a scrubbing brush. Always rinse the surface with clean water afterwards.

How to lay stepping stones or staggered patios



Step One

It's easy to create walkways and staggered patios by loose laying your outdoor tiles. If your surface is solid and secure, outdoor porcelain tiles can be simply placed on the ground. If the ground is soft or uneven in any way, you will need to make the surface stable.



Step Two

To make a stable surface, create a base with a layer of sharp sand or fine gravel, then place your tile on top. If you're laying your tiles on to grass, you may wish to cut away a square of turf and dig down slightly so that the tile lays flush with the surface.

Important Information

Dimensions, colour and shading

Although we have made every effort to display the colours accurately, we cannot guarantee that this printed brochure directly reflects the colours of the actual product. As products can vary slightly from these images, we advise you to view a sample for true colour representation. Check out our website to find your nearest stockist. Please note that tiles are created in batches and some shade variation may occur between batches. Products with the same colour name, such as "grey", are not necessarily the same exact colour shade as another product with "grey" in its name. Please do not order using colour names or product names as your guide to colour. We manufacture our tiles to extremely tight tolerances, however due to the nature of the manufacturing process, sizes, weights, capacities, dimensions and measurements indicated may vary slightly.

Health and safety

Installing your own AI Fresco tiles is both rewarding and satisfying but you could be exposed to various risks if the correct safe methods of work as described in this booklet are not followed. Before you begin, be sure you have the appropriate protective equipment.

- Always wear gloves and safety footwear.
- Always wear goggles & respiratory protection when using cutting equipment.
- Handle your AI Fresco tiles with care to avoid breakages and chipping that may result from mishandling.
- Larger tiles will require assistance when lifting.

Guarantee

AI Fresco tiles have a 10 year structural guarantee. We warrant that the structural integrity of the product will not fail, under normal conditions, within a period of 10 years from date of purchase. Because specific installation details, structural design and environmental conditions are beyond the control of the Company, we cannot accept responsibility for the improper installation and/or care and maintenance of our products after they are installed. However, in the event of latent defects in the product caused by improper manufacturing, the Company will replace any defective product, provided the Company is notified in writing. The Company will also not be responsible if tiles are installed with a visible defect. The Company must pre-approve the cost of the replacement, in writing, prior to commencement of any warranty work.

Goods

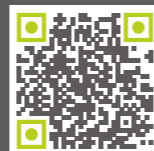
We take care to ensure that all of our Goods leave us in perfect condition. All orders must be examined on delivery and any shortages, damages or other discrepancies should be brought to the supplier's attention before installation. Confirm that all products have been inspected and approved before installation begins, as the installation of the product signifies acceptance.

Slip resistance

R Ratings are determined via testing in accordance with DIN 51130:2004, which is the "Testing of floor coverings; determination of the anti-slip properties; workrooms and fields of activities with slip danger; walking method; ramp test German National standard 2004". This is fully recognised and adopted in the UK. The "R" values range from R9, which has a small degree of slip resistance, up to R13 which is the highest slip resistance. R9 & R10 ratings are suitable for indoor domestic areas, whereas R11 ratings and above are also suitable for external applications.

For further installation advice, or if you have any questions, get in touch!
Tel: 0113 244 4984
info@alfrescotiles.co.uk

Scan here with your smart phone to view our detailed installation video



Specification

Code	Description	Indoor	Outdoor	Size (mm)	Variation	Slip Rating	Tile Weight (kg)	Pieces Per M ²	Box Quantity
P10825	Abbey Black Multi		•	600x600x20	V5	R11	15.50	2.78	2
P10827	Adlington White		•	600x600x20	V3	R11	15.50	2.78	2
P11194	Chatsworth Dark Grey		•	600x600x20	V2	R11	16.60	2.78	2
P11195	Chatsworth Dark Grey		•	600x900x20	V2	R11	25.00	1.85	1
P11196	Chatsworth Ivory		•	600x600x20	V2	R11	16.60	2.78	2
P11197	Chatsworth Ivory		•	600x900x20	V2	R11	25.00	1.85	1
P11192	Chatsworth Light Grey		•	600x600x20	V2	R11	16.60	2.78	2
P11193	Chatsworth Light Grey		•	600x900x20	V2	R11	25.00	1.85	1
P11200	Exbury Beige	•		595x595x10	V3	R9	7.50	2.82	4
P11178	Exbury Beige		•	600x600x20	V3	R11	16.80	2.78	2
P11179	Exbury Beige		•	600x900x20	V3	R11	25.50	1.85	1
P11199	Exbury Grey	•		595x595x10	V3	R9	7.50	2.82	4
P11176	Exbury Grey		•	600x600x20	V3	R11	16.80	2.78	2
P11177	Exbury Grey		•	600x900x20	V3	R11	25.50	1.85	1
P11205	Harewood Grey	•		195x1200x11	V2	R10	5.55	4.27	6
P11187	Harewood Grey		•	300x1200x20	V2	R11	17.15	2.78	2
P11204	Harewood Oak	•		195x1200x11	V2	R10	5.55	4.27	6
P11186	Harewood Oak		•	300x1200x20	V2	R11	17.15	2.78	2
P11190	Harlow Beige		•	600x600x20	V3	R11	16.60	2.78	2
P11191	Harlow Beige		•	600x900x20	V3	R11	25.00	1.85	1
P11188	Harlow Grey		•	600x600x20	V3	R11	16.60	2.78	2
P11189	Harlow Grey		•	600x900x20	V3	R11	25.00	1.85	1
P10826	Newby Grey		•	600x600x20	V4	R11	15.50	2.78	2
P11198	Rosemoor Grey		•	600x900x20	V3	R11	25.00	1.85	1
P11206	Rosemoor Sand		•	600x900x20	V3	R11	25.00	1.85	1
P11180	Sherborne Graphite		•	600x600x20	V1	R11	16.80	2.78	2
P11203	Welford Anthracite	•		595x595x10	V2	R9	7.50	2.82	4
P11183	Welford Anthracite		•	600x600x20	V2	R11	16.80	2.78	2
P11185	Welford Geometric Anthracite		•	600x600x20	V2	R11	16.80	2.78	2
P11201	Welford Grey	•		595x595x10	V2	R9	7.50	2.82	4
P11181	Welford Grey		•	600x600x20	V2	R11	16.80	2.78	2
P11184	Welford Geometric Grey		•	600x600x20	V2	R11	16.80	2.78	2
P11202	Welford Ivory	•		595x595x10	V2	R9	7.50	2.82	4
P11182	Welford Ivory		•	600x600x20	V2	R11	16.80	2.78	2

Guide to Variations



Uniform appearance

Pattern, shading and colour differences are minimal



Slight variation

Distinguishable yet subtle differences in pattern with similar colouring



Moderate variation

Varying pattern and shading but with a similar colour identity



Substantial variation

Random colour and pattern differences that create a totally unique look



Extreme variation

Contrasting colour and pattern differences that create a striking statement look

Product Summary



Abbey Black Multi
600x600x20mm
Page 6



Newby Multi
600x600x20mm
Page 7



Sherborne Graphite
600x600x20mm
Page 17



Adlington White
600x600x20mm
Page 16



Welford Ivory
595x595x10mm
Pages 20-21



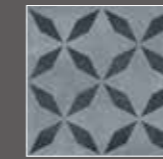
Welford Ivory
600x600x20mm
Pages 20-21



Welford Grey
595x595x10mm
Pages 20-21



Welford Grey
600x600x20mm
Pages 20-21



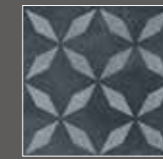
Welford Geometric Grey
600x600x20mm
Pages 22-23



Welford Anthracite
595x595x10mm
Pages 20-21



Welford Anthracite
600x600x20mm
Pages 20-21



Welford Geometric Anthracite
600x600x20mm
Pages 22-23



Harlow Beige
600x600x20mm
Pages 14-15



Harlow Beige
600x900x20mm
Pages 14-15



Harlow Grey
600x600x20mm
Pages 14-15



Harlow Grey
600x900x20mm
Pages 14-15



Rosemoor Sand
600x900x20mm
Pages 18-19



Rosemoor Grey
600x900x20mm
Pages 18-19



Exbury Beige
595x595x10mm
Pages 10-11



Exbury Beige
600x600x20mm
Pages 10-11



Exbury Beige
600x900x20mm
Pages 10-11



Exbury Grey
595x595x10mm
Pages 10-11



Exbury Grey
600x600x20mm
Pages 10-11



Exbury Grey
600x900x20mm
Pages 10-11



Chatsworth Ivory
600x600x20mm
Pages 8-9



Chatsworth Ivory
600x900x20mm
Pages 8-9



Chatsworth Light Grey
600x600x20mm
Pages 8-9



Chatsworth Light Grey
600x900x20mm
Pages 8-9



Chatsworth Dark Grey
600x600x20mm
Pages 8-9



Chatsworth Dark Grey
600x900x20mm
Pages 8-9



Harewood Grey
195x1200x11mm
Pages 12-13



Harewood Grey
300x1200x20mm
Pages 12-13



Harewood Oak
195x1200x11mm
Pages 12-13



Harewood Oak
300x1200x20mm
Pages 12-13



Exbury Beige 595x595x10mm & 600x600x20mm & Harewood Oak 300x1200x20mm
Front Cover: Harewood Grey 195x1200x11mm & 300x1200x20mm, Welford Grey 600x600x20mm & Welford Geometric Grey 600x600x20mm

Please note that product images are shown for indicative purposes only and colour reproduction throughout this catalogue is as accurate as printing techniques allow. Although we endeavour to communicate any changes as soon as possible, we reserve the right to amend or withdraw products contained within this catalogue at any time without prior notice.

As variations in colour, shading and texture may occur between different batches of tiles, we recommend you purchase sufficient tiles in one go to complete a project. Please ensure a satisfactory blend of shades can be achieved BEFORE fixing as claims relating to variations that were apparent before fixing will not be accepted once the tiles have been installed.

M10236

March 2021 V1

Supplied and distributed by Verona Group | sales@veronagroup.co.uk | Project House, Armley Road, Leeds, LS12 2DR