

URBAN GARDENING CATALOGUE

WELCOME TO THE HYDROGARDEN URBAN GARDENING CATALOGUE.

We have picked out a selection of our best-selling products that will achieve excellent results to keep your plants and flowers flourishing. Whether growing indoors or outdoors, propagating or potting up; we have all the products you need to help make the job easier.

HydroGarden have a complete hydroponic and horticultural catalogue available upon request. Our full range of products can be viewed at hydrogarden.com

We hope you enjoy browsing through the latest we have to offer.

The HG Team



WAYS TO SHOP

Order online
hydrogarden.com



Order by phone
+44 (0)2476 651 500



Order by email
sales@hydrogarden.com



DELIVERY

NEXT DAY DELIVERY

on all phone orders placed before 2pm
on all web orders placed online before 3pm

For full ordering information and details
of next day delivery*, see the latest
HydroGarden price list.

Keep up to date with news, offers and
new products by signing up and opting in
to our newsletter!

Don't miss out and follow all things
HydroGarden on our social media channels.



If you have any questions about our
products or to arrange an online account,
please call +44 (0)2476 651 500 or email
commercialsales@hydrogarden.co.uk

*This service is only available in
our courier areas and is subject
to availability.

CONTENTS

POTS & SYSTEMS 2-20

GROWING ACCESSORIES 21-28

GROWING MEDIA 29-32

NUTRIENTS & ADDITIVES 33-38

HEATERS 39

PROPAGATION 40-46

PUMPS 47

PEST CONTROL 48-51

LIGHTING 52-53



GoGro Style brings colour and nature to a growers' home or outdoor area. GoGro's modular self-watering design means your system can be built to fit any space, from living rooms to gardens, patios or even balconies – the possibilities are endless, and now brighter and more stylish!

The larger 28.5 L pots are now available in three beautiful colours; white, lime green and purple. Each pot is fully UV resistant and frost proof meaning they can handle the most adverse weather conditions. GoGro is exceptionally easy to install and use, meaning it suits all levels of growers.

Say goodbye to daily watering!

GoGro's clever self-watering tray and valve prevents over/under watering meaning your plants will stay healthier for longer with minimal upkeep! Simply set up your GoGro modules using the parts provided, place in your desired location, plant your favourite flowers, fill up the reservoir, and let GoGro handle the rest! Please make sure your reservoir is raised a minimum of 50 cm above the level of your pots allowing gravity to take control.

No power? No problem!

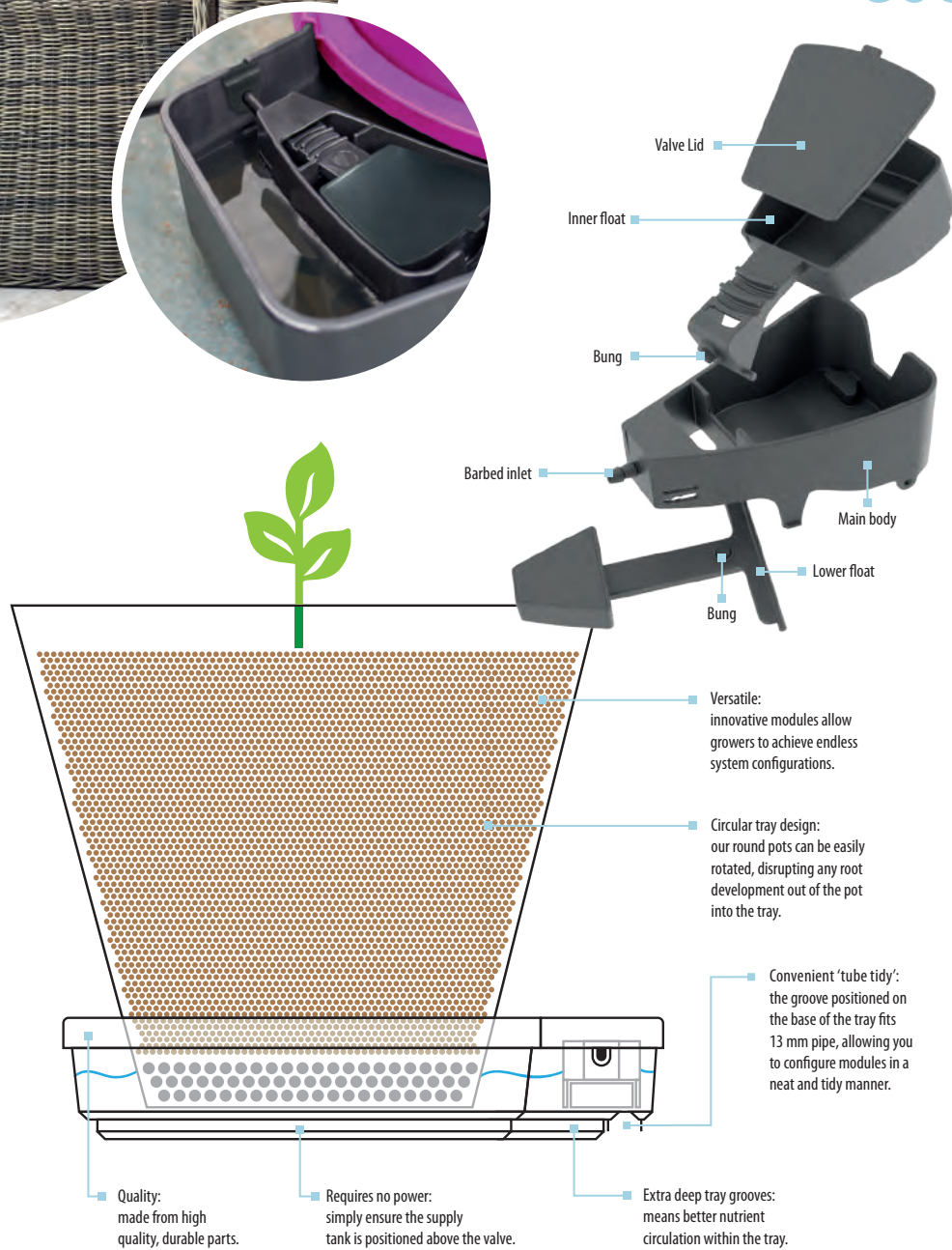
GoGro Style is a gravity fed system that does not require any plumbing, electricity or even growing expertise! Its uniquely designed tray and collar prevents algae build up by blocking sunlight reaching the water under each pot; this is a common issue with standard pots and trays in greenhouses or gardens that can cause many growing problems.

GoGro Style is simple, stylish and gives you amazing results!

Designed and manufactured in the UK.



GoGro Style Systems | POTS & SYSTEMS



GoGro Style 3 Plant Systems

GoGro Style brings colour and nature to a growers' home or outdoor area. GoGro's modular self-watering kit design means your system can be built to fit any space, from living rooms to gardens, patios or even balconies – the possibilities are endless, and now brighter and more stylish!

- Stylish self-watering kit system
- No plumbing required
- Prevents under/over watering
- UV and frost proof
- Ideal for growing in small spaces



01-075-155	GoGro Style 3 Plant System - White
01-075-160	GoGro Style 3 Plant System - Purple

01-075-165	GoGro Style 3 Plant System - Lime Green
01-075-170	GoGro Style 3 Plant System - Mixed Colours



don't stop... gro



GoGro Essential 2 & 4 Plant Kits

Designed with modularity at its core the GoGro can be used as a single unit or extended to use with multiple pots.

- Available with 15 or 25 L pots or module only
- Kit bag contains everything you need to set your module up
- Fits most industry standard round 15 or 25 L pots



01-075-050	GoGro Essential 2 Plant - 15 L
01-075-100	GoGro Essential 4 Plant - 15 L



GoGro Expansion 2 Plant Kit

The same modular system that can be used as a single unit or extended to use with multiple PLANT!T DirtPots instead of plastic pots.

- Available with 17 or 26 L PLANT!T DirtPots
- Kit bag contains everything you need to set your module up



01-075-080	GoGro Expansion 2 Plant - 15 L
------------	--------------------------------



01-075-705



01-075-765

01-075-760

GoGro Root Control Disc

Prevents roots from growing outside of your pots, allowing the GoGro Valve to work correctly.

- Makes maintenance of GoGro systems easy
- Suitable for use with the 35 L pot

Technical Specifications

Dimensions: 370 mm diameter

GoGro 5 Pot Floor & Pallet Tray Modules

An incredibly efficient way of growing up to five plants within the GoGro system. Designed to be situated directly on the floor or on a pallet.

- Holds five 35 L pots, all fed through one GoGro Valve
- Uses the same amount of water as five separately set up pots
- Designed to fit perfectly in a 1.2 m² growtent
- Pallet Tray version is designed to be situated on top of a pallet, to allow for more efficient space management

Technical Specifications

Dimensions: 1.2 m x 1.2 m



01-075-725

GoGro 5 Pot Floor & Pallet Trays

The Floor & Pallet Tray component for the GoGro 5 pot system.

Compatible with 35 L pots



GoGro Valve & Channel Covers

Lids for the chamber where the GoGro Valve is located on the tray and the channels between the pots.

- Prevents airborne dust and debris from blocking the channel
- Prevents algal growth, and contamination of the nutrient solution

01-075-630	GoGro Root Control Disc - 370 mm
------------	----------------------------------

01-075-705	GoGro 5 Pot Floor Tray Module
------------	-------------------------------

01-075-725	GoGro 5 Pot Pallet Tray Module
------------	--------------------------------

01-075-750	GoGro 5 Pot Pallet Tray
01-075-755	GoGro 5 Pot Floor Tray
01-010-087	Round Black Pot - 35 L

01-075-760	GoGro 5 Pot Tray Valve Cover - White
01-075-765	GoGro 5 Pot Tray Channel Cover - White

POTS & SYSTEMS | Fabric Pots

11 & 17 L
ROUND POTS
ARE PERFECT
FOR
GOGRO



PLANT!T Fabric Dirt Pots

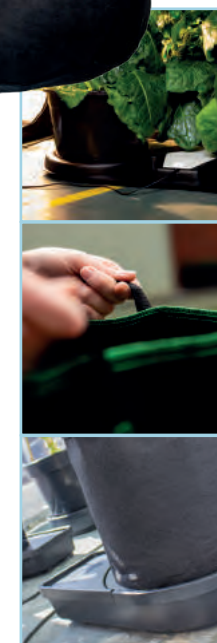
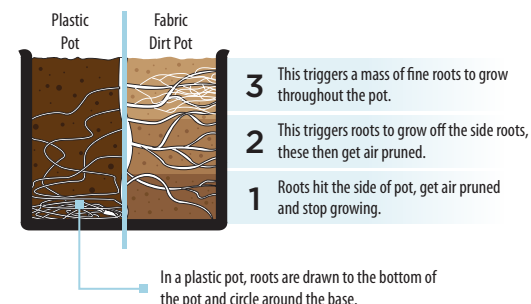
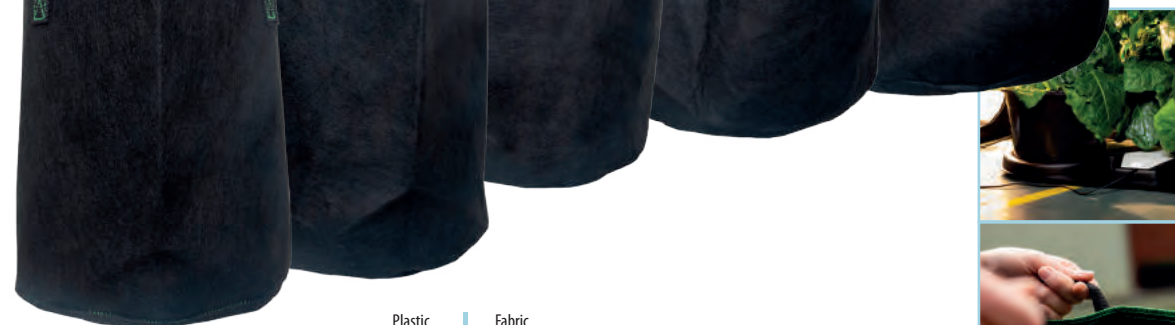
Lightweight and reusable, the PLANT!T Dirt Pots offer value and versatility to all gardening enthusiasts. Made from porous breathable fabric, PLANT!T Dirt Pots allow your plants to thrive, promoting exceptional root health and vigorous plant growth. The soft-sided construction allows the planter to conform to your terrain, making them the perfect choice for all growing areas.

- Promotes vigorous plant growth
- No root circling
- Great for Tender Perennials - heavy duty handles that allow you to manoeuvre them around your garden or glasshouse
- Breathable, soft fabric means superior drainage and aeration
- Manages plant temperatures - keeping plants cooler in summer and warmer in winter

PLANT!T

01-010-465	PLANT!T Square Base Dirt Pot 11 L - Pack of 10
01-010-470	PLANT!T Square Base Dirt Pot 17 L - Pack of 10
01-010-475	PLANT!T Square Base Dirt Pot 26 L - Pack of 10
01-010-480	PLANT!T Square Base Dirt Pot 37 L - Pack of 5
01-010-485	PLANT!T Square Base Dirt Pot 56 L - Pack of 5

01-010-800	PLANT!T Round Dirt Pot 11 L - Pack of 10
01-010-805	PLANT!T Round Dirt Pot 17 L - Pack of 10
01-010-810	PLANT!T Round Dirt Pot 26 L - Pack of 10
01-010-815	PLANT!T Round Dirt Pot 37 L - Pack of 5
01-010-820	PLANT!T Round Dirt Pot 56 L - Pack of 5





Botanium

Pick, chop, cook. Indoor growing simplified!

Botanium enables you to grow herbs or vegetables fast and effortlessly. Featuring an automatic watering system along with a water tank that lasts several weeks, this product is perfect if you lack green fingers but want fresh basil with minimum effort. Perfect for growing basil, oregano, mint, chillies, tomatoes and more!

Botanium's contemporary look and feel means it will be a beautiful addition to any household. Whether you want to grow on the windowsill in your kitchen, or next to your TV - Botanium takes the 'green fingers' out of growing!



18-015-200	Botanium - White Smoke
18-015-205	Botanium - Ash Grey
18-015-210	Botanium - Laurel Green

32-005-160	Botanium Nutrient 90 ml
32-005-170	Botanium Growing Medium - 0.7 L

How does it work?

Complete with a USB cable, Botanium simply plugs into any USB port/plug and begins irrigating immediately. Once the USB cable is unplugged you will automatically reset the pump timer setting. Due to its low power output, Botanium can also work using a solar or phone charger battery pack allowing you to grow anywhere around your home.

Botanium comes complete with porous stone growing media. By growing in porous stones instead of soil, the plant's roots are exposed to higher levels of oxygen resulting in faster growth. The plant is automatically watered every three hours with nutrient-rich water from the reservoir below. The excess water is drained through the bottom of the growing container and is collected in the water tank, so it can be reused - this prevents any water wastage!

What can you grow?

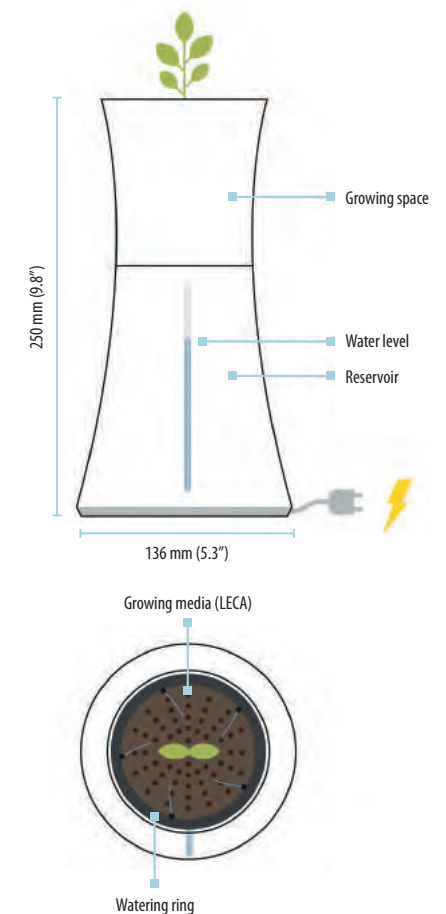
You can grow herbs such as basil, oregano or mint. If herbs aren't for you, then why not try growing chillies, tomatoes or even strawberries! Botanium works especially well with thirsty plants that normally would require very frequent watering.

Grow indoors

Botanium works well on a windowsill with plenty of natural sunlight. If you live in a cold and dark country, you will need extra light during the winter to help your plants thrive. The E27 full spectrum LED grow light is the perfect supplement for natural daylight, and it will encourage your plant to grow faster and stronger!

What comes in your kit?

Your complete kit includes; one Botanium planter with built-in pump and USB cable, one USB to UK three pin plug, 0.7 L of porous stone, 25 ml of Botanium nutrient solution, and a complete guide to set up your Botanium.





Urbalive Roseta Self-watering Bowl

Ideal for small plants, flowers and succulents.
Urbalive Roseta self-watering bowls are designed to keep your small flowers or succulents alive for longer. Using a clever self-watering system, Roseta Bowls are great for indoor & outdoor use and comes with a built-in weight that anchors the product on those windy days, meaning you can leave your plants to flourish all year round.



urbalive
by plastia

18-025-105	Urbalive Flower Bowl Roseta - 30 cm - Anthracite
18-025-110	Urbalive Flower Bowl Roseta - 30 cm - Silver
18-025-115	Urbalive Flower Bowl Roseta - 30 cm - Ivory
18-025-120	Urbalive Flower Bowl Roseta - 30 cm - Bronze

18-025-130	Urbalive Flower Bowl Roseta - 40 cm - Anthracite
18-025-135	Urbalive Flower Bowl Roseta - 40 cm - Silver
18-025-140	Urbalive Flower Bowl Roseta - 40 cm - Ivory
18-025-145	Urbalive Flower Bowl Roseta - 40 cm - Bronze



Urbalive Roseta Self-watering Vase

Perfect for outdoor tables, graves, and living rooms.
Urbalive Roseta vases are designed to keep your cut flowers alive for longer. Roseta Vases are great for indoor and outdoor use especially on tables or grave sicles. The vases come with either a built-in weight or a built-in spike, that anchors the product on those windy days, meaning you can leave your plants to flourish.



urbalive
by plastia

18-025-005	Urbalive Vase Roseta 1 L with Load - Anthracite
18-025-010	Urbalive Vase Roseta 1 L with Load - Silver
18-025-015	Urbalive Vase Roseta 1 L with Load - Ivory
18-025-020	Urbalive Vase Roseta 1 L with Load - Bronze
18-025-030	Urbalive Vase Roseta 1 L with Spike - Anthracite
18-025-035	Urbalive Vase Roseta 1 L with Spike - Silver
18-025-040	Urbalive Vase Roseta 1 L with Spike - Ivory
18-025-045	Urbalive Vase Roseta 1 L with Spike - Bronze

18-025-055	Urbalive Vase Roseta 1.3 L with Load - Anthracite
18-025-060	Urbalive Vase Roseta 1.3 L with Load - Silver
18-025-065	Urbalive Vase Roseta 1.3 L with Load - Ivory
18-025-070	Urbalive Vase Roseta 1.3 L with Load - Bronze
18-025-080	Urbalive Vase Roseta 1.3 L with Spike - Anthracite
18-025-085	Urbalive Vase Roseta 1.3 L with Spike - Silver
18-025-090	Urbalive Vase Roseta 1.3 L with Spike - Ivory
18-025-095	Urbalive Vase Roseta 1.3 L with Spike - Bronze



Urbalive Self-watering Planter

Create a real centre piece to a room.

The Urbalive product range supports green living in cities. Urbalive's mission is to produce and design products that bring us closer to nature, create a healthier lifestyle and utilise sustainable natural resources. Thanks to our Urbalive range, growing plants and composting will become a normal part of city life!

Urbalive Self-watering Planters are ideally suited for indoor use, but they can also be used outside on roof terraces, balconies and patios. They are ideal for growing and maintaining houseplants, flowers, herbs and small vegetables. This European designed product perfectly combines wood with plastic to create a real centre piece to a room.

Using a simple wick system, both planters hold 15 L of water meaning your plants can stay hydrated for up to two weeks during warmer summer days. These trendy planters are great for thirsty plants, small vegetables, and even strawberries thanks for their large volume planting area.

Technical Specifications

Low planter: 50.5 cm x 48 cm
 Raised planter: 50.5 cm x 78 cm
 Planting volume: 21.7 L
 Reservoir volume: 15 L

urbalive
by plastfla

18-025-705	Urbalive Raised Planter - Light Anthracite
18-025-710	Urbalive Raised Planter - Light Green
18-025-715	Urbalive Raised Planter - Ivory & White
18-025-720	Urbalive Raised Planter - Chocolate

18-025-730	Urbalive Low Planter - Light Anthracite
18-025-735	Urbalive Low Planter - Light Green
18-025-740	Urbalive Low Planter - Ivory & White
18-025-745	Urbalive Low Planter - Chocolate



Clever self-watering
wick system

POTS & SYSTEMS | Worm Farm



Urbalive Worm Farm

Ideal for recycling organic kitchen waste.

The Urbalive Worm Farm is a stylish container that is used to compost organic kitchen waste using Californian earthworms. This unique and trendy product can be used at home, in schools or at work to make clever use of your food waste to continue the ecosystem.

The Urbalive range supports green living in cities, brings us closer to nature, and helps towards sustainability of natural resources.

Its modern design is made up of composting layers where earthworms help create vermicompost leading to a container where the worm tea collects. Vermicompost contains essential enzymes and natural growth hormones that are great for soil fertility and feeding your garden. Worm tea is rich in natural nutrients and enzymes that help plants grow strong and healthy. Simply mix your tea with water and feed your plants or vegetables.

urbalive
by plastia

18-025-750	Urbalive Worm Farm - Anthracite
18-025-755	Urbalive Worm Farm - Light Green
18-025-760	Urbalive Worm Farm - Ivory
18-025-762	Urbalive Worm Farm - Chocolate

Turn your organic kitchen waste into compost

The Urbalive Worm Farm by Plastia is a stylish container that is used to compost organic kitchen waste using Californian Earthworms which are easily accessible. Alternatively, you do not necessarily have to use earthworms, as they simply speed up the natural breakdown of compost.

This unique and trendy product can be used at home, in schools or at work to make clever use of your food waste to continue the ecosystem.

Clever multi-layered system allows you to make worm tea

The modern design is made up of composting layers where earthworms help create Vermicompost leading to a container where the worm tea collects.

Vermicompost contains efficient enzymes and natural growth hormones that are great for soil fertility and feeding your garden.

Worm tea is rich in natural nutrients and enzymes that help plants grow strong and healthy.

Fun, odourless and educational!

Composting in the Urbalive Worm Farm is easy and odourless. The kit comes with trays where the worms transform food scraps into Vermicompost, a bin where the liquid worm tea is collected and a tight fitting lid. Worm tea is a liquid fertiliser containing a lot of rich nutrients and enzymes that help your plants grow and prevent them from pests.

Where can I use my Worm Farm?

You can compost with worms all year-round. You can place your Worm Farm either indoors or outdoors, however it is important to always ensure that the earthworms have an optimal temperature of approximately 20°C. It is also key that there is plenty of moisture in the substrate. During Winter you should keep your

Worm Farm insulated to withstand a sudden drop in temperature or to avoid risk on frost. In the Summer please avoid leaving the Worm Farm in direct sunlight, this is to prevent water evaporation and overheating. The temperature in your Worm Farm should not drop below 5°C or exceed 25°C.

What can go into my Worm Farm?

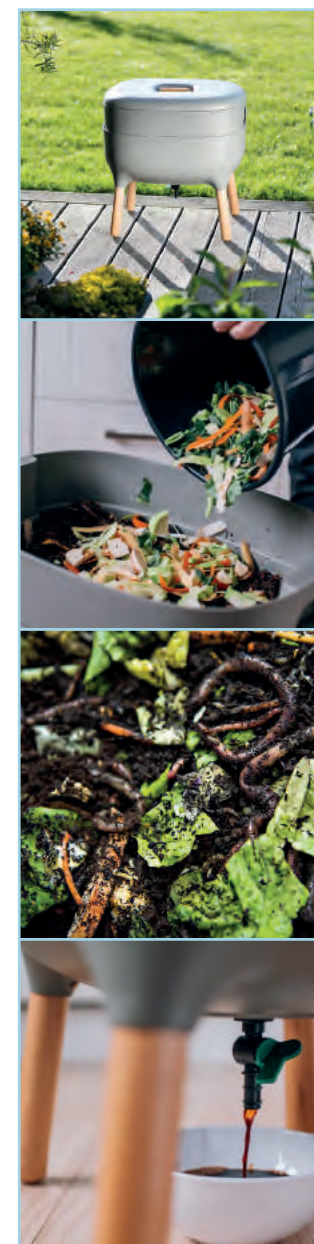
Your Worm Farm is particularly suitable for peelings and leftovers of fruit and vegetables, such as potato peels, apple cores, green tops of vegetables etc. Tea-bags are also great as the worms will often reproduce in them resulting in more Vermicompost! Coffee grounds and paper coffee filters are also suitable as well as cooked vegetables, crushed egg shells, dampened cardboard and dead plants. We strongly advise avoiding spicy foods, citrus fruits (oranges and limes), milk-based products, meat products, bones, oils, lard and other fats.

Which worms do I use?

Composting worms are mixture of species selected for their composting ability. These types of worms are productive at consuming organic leftovers and therefore offer the best solution to creating an organic Worm Tea and Vermicompost. Californian Earthworms are also excellent composters, they can be purchased online or in-store across the UK.

How do I use the Worm Tea?

Worm tea is an excellent liquid fertilizer for indoor plants and garden plants. It contains high amounts of nutrients and enzymes that promote natural growth and help build the plants' resistance to pests. We recommend diluting the tea with water at a ratio of 1:5, for example, 10 ml of worm tea with 50 ml of water.





Add your leftover fruits and vegetables (peel, pulps, seeds, stalks, leaves), teabags, coffee grounds and much more

Urbanive Bokashi Composter

An indoor composter designed for the processing of organic household waste, which uses fermenting bacteria to transform organic waste to a fermented liquid and fermented mixture. The obtained fermented material that can be used to create first-class compost, while the liquid has a range of possible uses in the household.

Bokashi composting is the transformation of organic waste using the principle of fermentation that is carried out by adding a dry mixture of special Bokashi bacteria to the organic waste. Unlike classical composting, here the fermentation process takes place without air and relies on living organisms that activate upon contact with organic material.

During fermentation, fermented liquid will form in the bin. The first collection of the liquid will be possible in approximately 14 days from the start of fermentation. After that, you should collect it approximately every 3-5 days.

The Urbanive Bokashi Composter can be kept in the kitchen, in the corridor in the garage, etc. Keep the container at room temperature. Avoid placing it in direct sunlight!

urbanive
by plastfa

18-026-400 Urbanive Bokashi Composter - Grey



The liquid can be used as a fertilizer for plants and soil

POTS & SYSTEMS | Feeders & Baths



Anthracite

Green

Ruby Red

Urbalve Finch Bird Feeder

Great for bird enthusiasts.

Urbalve Finch Bird Feeders help to bring birds and people together! This bird feeder comes in a simple, modern design that will suit any garden, patio, balcony or outdoor area.

Urbalve Finch Bird Feeders can be hung on a tree branch, attached to a railing, or a free-standing bar. Maintaining and replenishing the seed is very easy.

Technical Specifications

Dimensions:

L - 28.5 cm, W - 28.5 cm, H - 17 cm

Weight: 0.38 kg



urbalve
by plastfa

18-025-800	Urbalve Bird Feeder Finch - Anthracite
18-025-805	Urbalve Bird Feeder Finch - Green
18-025-810	Urbalve Bird Feeder Finch - Ruby Red



Anthracite

Green

Brown

Urbalve Domek Bird Feeder

Bringing nature closer.

Bright, vibrant feeders for wild birds. Hang on a tree, terrace or attached to railings and poles. Maintaining and replenishing the seed is very easy allowing you to feed the ecosystem.

Technical Specifications

Dimensions:

L - 16.5 cm, W - 21 cm, H - 15 cm

Weight: 0.43 kg



urbalve
by plastfa

18-025-870	Urbalve Bird Feeder Domek - Anthracite - Box of 6
18-025-875	Urbalve Bird Feeder Domek - Green - Box of 6
18-025-880	Urbalve Bird Feeder Domek - Brown - Box of 6



Taupe

Olive Green

Ivory

Urbalve Finch Birdbath

Invite nature to visit your garden!

A modern, simple, outdoor birdbath which provides a source of water for birds and insects and will suit any garden, patio, balcony or outdoor area.

Urbalve Finch Birdbaths can be fixed to a pole or rail.

Technical Specifications

Dimensions:

L - 32 cm, W - 32 cm, H - 22 cm

Weight: 0.30 kg



urbalve
by plastfa

18-025-900	Urbalve Birdbath Finch - Taupe - Box of 6
18-025-905	Urbalve Birdbath Finch - Olive Green - Box of 6
18-025-910	Urbalve Birdbath Finch - Ivory - Box of 6



Urbalive Berberis Self-watering Planters

Urbalive Berberis Self-watering Planters are great for indoor and outdoor planting.

The clever self-watering system allows your plant to be in control of watering cycles. Using a simple wick system, this stylish planter prevents under or over watering of plants, herbs and small vegetables. This system comes with a water level indicator to tell you how much water is in the pot, simply fill the reservoir up and enjoy healthier, greener plants!

If you live in a city where outdoor space is tight, the Urbalive Berberis Planter will fit perfectly onto windowsills and window ledges, to bring plenty of green to your urban landscape.

- Stylish self-watering system
- Visual indicator means no over or under watering
- Ideal for houseplants, flowers, herbs or small vegetables
- Perfect for balconies, roof terraces and patios
- Suitable for indoor and outdoor use



urbalive
by plastifa

18-025-475	Urbalive Berberis - 30 cm - Taupe
18-025-480	Urbalive Berberis - 30 cm - White
18-025-485	Urbalive Berberis - 30 cm - Anthracite
18-025-490	Urbalive Berberis - 30 cm - Terracota
18-025-495	Urbalive Berberis - 30 cm - Chocolate

18-025-405	Urbalive Berberis - 60 cm - Taupe & Ivory
18-025-410	Urbalive Berberis - 60 cm - White & Green
18-025-415	Urbalive Berberis - 60 cm - Anthracite & Green
18-025-420	Urbalive Berberis - 60 cm - Terracota & Ivory
18-025-425	Urbalive Berberis - 60 cm - Grey/Blue & White
18-025-430	Urbalive Berberis - 60 cm - Green & White

18-025-440	Urbalive Berberis - 80 cm - Taupe & Ivory
18-025-445	Urbalive Berberis - 80 cm - White & Green
18-025-450	Urbalive Berberis - 80 cm - Anthracite & Green
18-025-455	Urbalive Berberis - 80 cm - Terracota & Ivory
18-025-460	Urbalive Berberis - 80 cm - Grey/Blue & White
18-025-465	Urbalive Berberis - 80 cm - Green & White

POTS & SYSTEMS | Automatic Watering



Urbalive Berberis UNO, DUO & TRIO

Large-volume planters with a self-watering system for growing herbs, flowers, and vegetables.

Available in 3 sizes to suit small to larger, long-term plants. All variations are easy to handle. The container inserts have handles for easy access to the water tank, as well as inlets for firmly affixing plant supports (not included). Wheels on the base of the planters allow you to move the containers if needed.

Suitable for terraces, balconies, and gardens.



urbalive
by plastifa

18-026-200	Urbalive Berberis UNO - Terracotta
18-026-205	Urbalive Berberis UNO - Anthracite
18-026-210	Urbalive Berberis UNO - Chocolate

18-026-230	Urbalive Berberis DUO - Terracotta
18-026-235	Urbalive Berberis DUO - Anthracite
18-026-240	Urbalive Berberis DUO - Chocolate

18-026-260	Urbalive Berberis TRIO - Terracotta
18-026-265	Urbalive Berberis TRIO - Anthracite
18-026-270	Urbalive Berberis TRIO - Chocolate





Urbalive Berberis Hanging Bowl

Create a green corner anywhere.

An elegant masterpiece with lots of convenient details. A self-watering pot in it's own right can also be displayed with straps to create a decorative hanging basket. Thanks to its clever stopper, water will always stay inside the bowl, so you can hang it literally anywhere creating a green corner on your terrace, garden or in your living room.

TWO SIZES AVAILABLE



urbalive
by plastfla

18-026-305	Urbalive Berberis Hanging Bowl - 26 cm - Terracotta
18-026-310	Urbalive Berberis Hanging Bowl - 26 cm - Taupe
18-026-315	Urbalive Berberis Hanging Bowl - 26 cm - Grey-Blue
18-026-320	Urbalive Berberis Hanging Bowl - 26 cm - White
18-026-325	Urbalive Berberis Hanging Bowl - 26 cm - Anthracite

18-026-355	Urbalive Berberis Hanging Bowl - 30 cm - Terracotta
18-026-360	Urbalive Berberis Hanging Bowl - 30 cm - Taupe
18-026-365	Urbalive Berberis Hanging Bowl - 30 cm - Grey-Blue
18-026-370	Urbalive Berberis Hanging Bowl - 30 cm - White
18-026-375	Urbalive Berberis Hanging Bowl - 30 cm - Anthracite



POTS & SYSTEMS | Round Pots & Saucers



Drainage holes

Handles
not included



Round Black Pots

Robust plastic pots, ideal for pot culture and drip systems.

- Robust plastic material
- Handles are not included and are suitable for 35 & 65 L Round Pots

Technical Specifications

Dimensions:

1 L - 130 x 104 mm (Fits 20 cm Saucer)
3 L - 190 x 150 mm (Fits 20 cm Saucer)
5 L - 230 x 180 mm (Fits 26 cm Saucer)
7.5 L - 260 x 205 mm (Fits 26 cm Saucer)
10 L - 290 x 225 mm (Fits 30 cm Saucer)

15 L - 330 x 260 mm (Fits 35 cm Saucer)
20 L - 360 x 295 mm (Fits 40 cm Saucer)
25 L - 380 x 305 mm (Fits 40 cm Saucer)
35 L - 460 x 320 mm (Fits 60 cm Saucer)
65 L - 540 x 350 mm (Fits 60 cm Saucer)

01-010-006	Round Black 1 L Pot
01-010-008	Round Black 3 L Pot
01-010-009	Round Black 5 L Pot
01-010-073	Round Black 7.5 L Pot
01-010-075	Round Black 10 L Pot
01-010-010	Round Black 15 L Pot

01-010-082	Round Black 20 L Pot
01-010-085	Round Black 25 L Pot
01-010-087	Round Black 35 L Pot
01-010-092	Round Black 65 L Pot
01-010-094	Single Black Handle



Round Saucers

Sturdy, reusable and heavy duty.

Use these saucers to collect excess water drainage and soil spillage. They help keep plants moist for longer and maintain a cleaner growing area.

01-010-700	Round Saucer 20 cm – Black
01-010-705	Round Saucer 26 cm – Black
01-010-710	Round Saucer 30 cm – Black
01-010-715	Round Saucer 35 cm – Black
01-010-720	Round Saucer 40 cm – Black
01-010-725	Round Saucer 45 cm – Black
01-010-730	Round Saucer 60 cm – Black

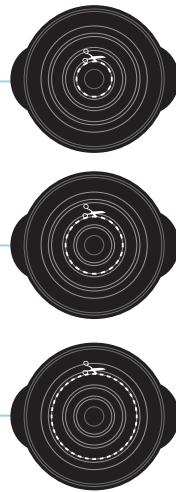


Round Net Pots

Get the air to your roots.

Our range of quality net pots are great for all sorts of systems and propagation.

01-010-045	Round Net Pot 51 mm (2")
01-010-052	Round Net Pot 77 mm (3")



Cable management points.
All pipes fit neatly, so no blocked
pipes or airlines. All fit correctly so
no problems with light or algae



Ultra Heavy Duty Net Pots

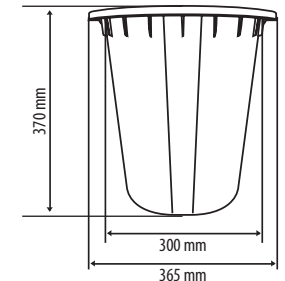
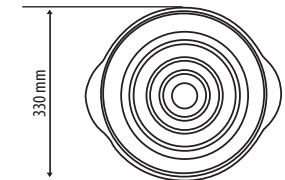
Heavy gauge, dense plastic netting, which is more resistant to cracking.

- Ideal for use in aeroponic systems as they offer the plants excellent breathing opportunities
- Perfect for use in Flood & Drain and NFT set ups
- Fits the PLANT!T Bucket Lid

PLANT!T Heavy Duty Bucket & Lid

Purpose-made bucket for DIY hobby systems while still maintaining function as a storage container.

- 20 L capacity
- Heaviest, strongest bucket on the market
- Tight fitting lid with indicator areas in the top to show where to cut to fit net pots
- Flat side panel on bucket to aid easy drilling for pipe inlets and better watertight seals
- Designed to take pre-moulded net pot lids that fit inside the inner lip of the bucket allowing any top spillage from drippers to fall back into the bucket
- Stackable when used as storage container, the base locates onto the lid



01-010-060	Ultra Heavy Duty Net Pot - 80 mm Diameter
01-010-065	Ultra Heavy Duty Net Pot - 140 mm Diameter
01-010-070	Ultra Heavy Duty Net Pot - 200 mm Diameter

PLANT!T

01-010-312	PLANT!T 20 L Bucket
01-010-317	PLANT!T Bucket Lid

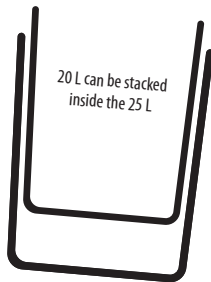
POTS & SYSTEMS | Buckets & Square Pots



Round Black Buckets

Robust, versatile buckets with handle and lid are great for storage buckets or making into DIY bucket systems.

- Available in 5 L, 10 L, 20 L, 25 L and 33 L sizes
- 20 L and 25 L sizes nest well to make double bucket Flood & Drain or Deep Water Culture systems
- 20 L, 25 L and 33 L sizes come with heavy duty metal handles



01-010-650	5 L Round Black Bucket with Handle & Lid
01-010-655	10 L Round Black Bucket with Handle & Lid
01-010-660	20 L Round Black Bucket with Metal Handle & Lid
01-010-665	25 L Round Black Bucket with Metal Handle & Lid
01-010-670	33 L Round Black Bucket with Metal Handle & Lid



Premium Square Pots with Feet

High quality pots offering excellent drainage.

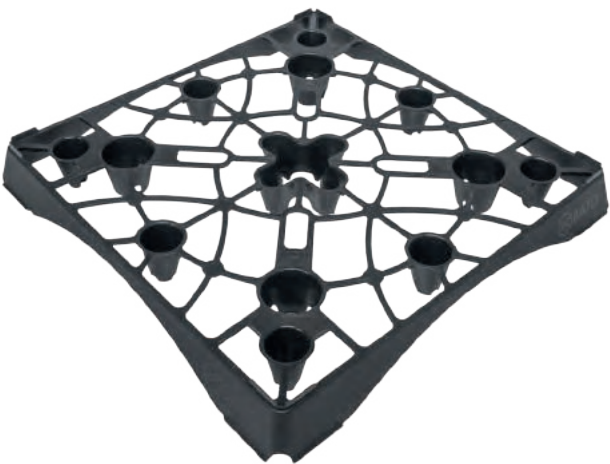
- 25 mm feet elevate pot out of standing water
- Robust plastic, suitable for years of use
- Unique underside with drainage slots and aeration holes
- Grid bottom

Technical Specifications

25 L - 345 x 345 x 325 mm
(Fits 330 mm² Saucer)
35 L - 395 x 395 x 360 mm
(Fits 420 mm² Saucer)



01-010-232	25 L Premium Square Pot with Feet
01-010-235	35 L Premium Square Pot with Feet



Pot Stand

Developed to create distance between the base of pot and standing water, the open construction provides excellent drainage.

- Feet allow air and light to come under the bag or pot
- Supports a weight up to 25 kg
- Fits up to 35 cm pots

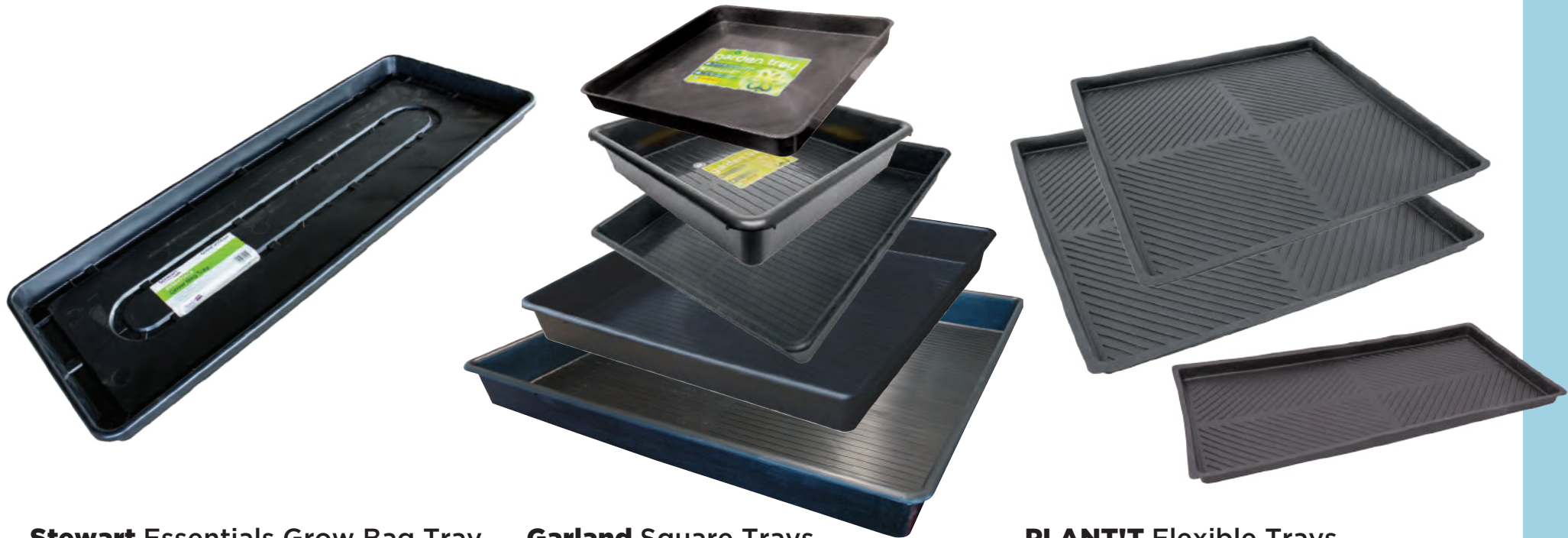
Technical Specifications

Dimensions: 350 x 350 x 42 mm

Suitable for use with

- 01-010-225 18 L Premium Square Pot
- 01-010-230 25 L Premium Square Pot
- 01-010-010 Round Black 15 L Pot
- 01-010-082 Round Black 20 L Pot
- 01-010-085 Round Black 25 L Pot
- 01-010-087 Round Black 35 L Pot

01-010-245	35 cm Pot Stand - Black
------------	-------------------------



Stewart Essentials Grow Bag Tray

Impact resistant, light, long life trays.

- Ideal for use with growbags, if needed add holes for drainage
- Robust injection moulded propagator ideal for years of use
- Large enough to fill with smaller trays or pots or multi cell inserts

Technical Specifications

Dimensions: 1000 x 390 x 50 mm



Stewart
Garden

12-555-020	Stewart Essentials Grow Bag Tray 100 cm x 39 cm x 5 cm
------------	--------------------------------------------------------

Garland Square Trays

Lightweight but robust plastic makes these trays perfect for many uses. Plant direct or in seed trays and pots, if needed add holes for drainage.

- Impact-resistant material, made from recycled polypropylene
- Shallow horizontal ridges on the internal base of the tray aid drainage

Technical Specifications

Dimensions:

60 cm² - 600 x 600 x 50 mm
 60 cm² - 600 x 600 x 120 mm
 80 cm² - 800 x 800 x 120 mm
 1 m² - 1000 x 1000 x 120 mm
 1.2 m² - 1200 x 1200 x 120 mm



12-555-025	Garland 60 cm ² Tray - 5 cm Depth
12-555-026	Garland 60 cm ² Tray - 12 cm Depth
12-555-027	Garland 80 cm ² Tray - 12 cm Depth
12-555-035	Garland 1 m ² Tray - 12 cm Depth
12-555-040	Garland 1.2 m ² Tray - 12 cm Depth

PLANT!T Flexible Trays

An innovative solution for greenhouses to be used as a catch tray with pots or to add extra protection.

- Flexible trays that fit where other trays can't go
- High quality, durable and hardwearing trays

Technical Specifications

Dimensions:

1.2 m - 1200 x 600 x 60 mm
 1 cm² - 1000 x 1000 x 60 mm
 1.2 m² - 1200 x 1200 x 60 mm



PLANT!T

12-555-115	PLANT!T 1.2 m x 0.6 m Flexible Tray
12-555-120	PLANT!T 1 m ² Flexible Tray
12-555-125	PLANT!T 1.2 m ² Flexible Tray



Slimline Water Butts

Heavy duty water butts that are ideal for gravity feed or pumped irrigation systems such as GoGro.

- Available in 100 or 250 L sizes
- Supplied with a lid and 13 mm tap

01-045-155	100 L Slimline Water Butt
01-045-160	Slimline Water Butt Stand - to suit 100 L
01-045-165	250 L Slimline Water Butt
01-045-170	Water Butt Stand - to suit 250 L



PLANTIT Flexible Tanks

Use for rain water collection or as a nutrient reservoir.

- This handy tank can be used for hydroponic systems, water storage in gardening and collection of rain water
- Easy to store away when not in use unlike rigid tanks
- Includes a 13 mm Nut and Tail with 3/4" BSP

Technical Specifications

Size	Max. Working Volume	Diameter	Height
60 L	50 Litres	40 cm	50 cm
100 L	90 Litres	40 cm	80 cm
250 L	240 Litres	60 cm	90 cm
500 L	450 Litres	80 cm	100 cm
780 L	700 Litres	100 cm	100 cm
1100 L	1000 Litres	120 cm	100 cm

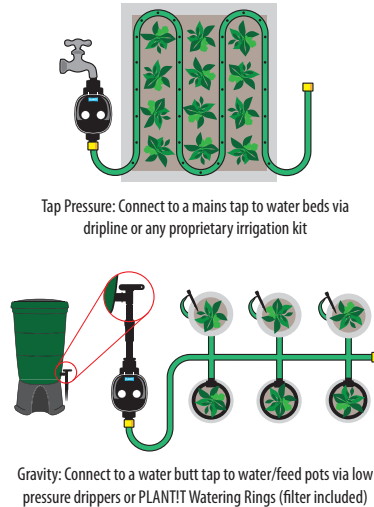


01-045-500	PLANTIT 60 L Flexible Tank
01-045-505	PLANTIT 100 L Flexible Tank

01-045-510	PLANTIT 250 L Flexible Tank
01-045-515	PLANTIT 500 L Flexible Tank

01-045-520	PLANTIT 780 L Flexible Tank
01-045-525	PLANTIT 1100 L Flexible Tank





PLANT!T Watering Ring

Laser-cut watering ring and T-piece, ideal for use with DIY kits or systems. Allows for even watering throughout growing media eliminating dry areas and maximising root growth.

- Laser cutting eliminates swarf, creating very clean holes and reducing the likelihood of blockages
- Adjustable angle 13 mm T-piece for connecting to dripper lines or "in-pot feed" from below

Technical Specifications

Dimensions:
200 mm diameter



PLANT!T

01-045-115 PLANT!T Watering Ring

PLANT!T Water Timer

Gravity feed and mains pressure irrigation controllers. Simply select the time you want the water supply to be turned on and off, link up to your irrigation dripper line and the timer will do the rest.

- Ideal for watering allotments, lawns, gardens, shrubs, pots, hanging baskets, patio irrigation, roof gardens, holiday watering and sprinklers
- Easy to install and simple to use, with just 2 dials for setting frequency and run time
- Auto safety valve shut-off when battery power is low and programme delay button for when you need to do plant maintenance work and don't want to be irrigating
- Includes extra fittings to connect to a water butt, as well as a filter

Technical specifications

Working pressure range: 0-150 PSI (0-10 BAR)

Connection: 3/4 male /female tap/hose connector

Frequency: can select to irrigate every 1, 2, 3, 4, 6, 8, 12, 24, 48, 72 hours or 1 week

Run (on) time: 1, 3, 5, 10, 15, 20, 30, 60, 90 or 120 minutes



PLANT!T

01-045-125 PLANT!T Water Timer



PLANT!T pH Meter

A sturdy, compact, reliable and surprisingly easy to use pH Meter that also reads the temperature at the same time.

- pH/temperature dual LCD display
- Auto-Temperature Compensation (ATC)
- One touch auto-calibration
- 20 minute sleep function
- Data hold selection
- Low battery indicator
- Sensor cover to keep glass bulb moist

PLANT!T

09-410-100 PLANT!T pH Meter

GROWING ACCESSORIES | Plant Support



Mulch Trays

Mulch Trays fit over the top of your plant pot and are ideal for hand watered and dripper fed plants. They are designed to help reduce water loss through evaporation..

- Water less frequently and use less water!
- Evenly distributes water over the surface of the media

Technical Specifications

25 L - 345 x 345 x 325 mm (Fits 330 mm² Saucer)

35 L - 395 x 395 x 360 mm (Fits 420 mm² Saucer)



01-010-520	3 L Mulch Tray - Black
01-010-530	10 L Mulch Tray - Black

PLANT!T YoYo

The ultimate plant support, eliminating the need to re-hang everyday.

- Automatically tightens as plants grow, offering support and sculptural training
- No need to constantly adjust the device as plants grow
- Supports your plant as it grows or holds fruiting trusses
- Includes locking pin!

PLANT!T

10-480-020 PLANT!T YoYo - Box of 8

PLANT!T Bamboo Stakes

These Bamboo Stakes have a natural finish and can be used indoors and outdoors.

- Lightweight stakes that have a smooth, attractive finish
- Natural finish
- Strong and durable
- Use indoors or outdoors

PLANT!T

10-480-055	PLANT!T Bamboo Stakes 90 cm (3') - Pack of 25
10-480-060	PLANT!T Bamboo Stakes 120 cm (4') - Pack of 25
10-480-062	PLANT!T Bamboo Stakes 150 cm (5') - Pack of 25
10-480-064	PLANT!T Bamboo Stakes 180 cm (6') - Pack of 25

PLANT!T Plant Support - Connectable

The PLANT!T Plant Support - Connectable 60 cm (2ft) allows growers not just to support their plants but also extend the support to required length.

- Connect together for longer support
- Plastic coated steel supports
- Increased strength and durability

PLANT!T

10-480-100 PLANT!T Plant Support - Connectable 60 cm (2ft) - Pack of 50



LightHouse Twist Tie

This plastic coated wire is durable and comes with a cutting tool built into the dispenser.

- Dispenser included!
- Available as a 50 metre roll



LightHouse Soft Garden Tie

The Garden Soft Tie is ideal for tying plants to stakes and trellises.

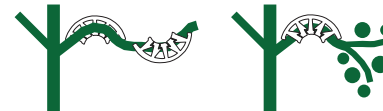
- Padded tie that will not cut into the stems
- 8 metres long



Plant Bends

Plant Bends enable you to train leaves or stems to ensure a plant receives as much light as possible. They offer flexible short and side truss support for long and thick truss stems and can be attached at an early stage of growth.

- Bendable, so the stem does not have to be forced through the support and they bend with the truss as the stem grows
- Pack of 50



LightHouse PVC Coated Stiff Wire

PVC Coated Stiff Wire can be used for a range of different applications such as securing plants to plant supports in a greenhouse or growroom.

- 50 m x 1.2 mm (approx.)



10-480-065 LightHouse Twist Tie - 50 m Roll



10-480-070 LightHouse Garden Soft Tie - 3.5 mm x 8 m (26' x 1/8")



10-480-090 LightHouse PVC Coated Stiff Wire - 50 m

10-480-085 Plant Bends - Pack of 50

GROWING ACCESSORIES | Measuring



Plastic Pipettes

Used to take an accurate amount of concentrate to mix with water or add to your tank. A must for all growrooms.

- 3 ml Pipette measures in 0.5 ml increments
- 5 & 10 ml Pipettes measure in 1 ml increments

10-485-025	3 ml Plastic Pipette - 0.5 ml increments
10-485-030	5 ml Plastic Pipette - 1 ml increments
10-485-035	10 ml Plastic Pipette - 1 ml increments



Graduated Jugs

An essential piece of kit for every growroom, used to take an accurate amount of concentrate to mix with water or add to a tank.

- Measures in 5 - 100 ml increments (depending on size)

10-485-041	50 ml Graduated Jug - 5 ml increments
10-485-042	100 ml Graduated Jug - 5 ml increments
10-485-044	250 ml Graduated Jug - 25 ml increments



10-485-045	500 ml Graduated Jug - 50 ml increments
10-485-050	1 L Graduated Jug - 50 ml increments
10-485-055	2 L Graduated Jug - 100 ml increments



Scalpels

Perfect for fine pruning and trimming, these stainless steel clippers come in a box of 12.

- Quality stainless steel remains sharp and untarnished even through heavy use
- Mini blades ideal for precision trimming

12-570-020	Scalpels (Packet of 10)
------------	-------------------------



Microscopes | **GROWING ACCESSORIES**



Stainless Steel Blade Precision Pruners - Straight & Curved

Made with high-grade razor-sharp stainless steel, these pruners produce an extremely neat and precise result when pruning. Available with straight or curved blades.

- Soft grips for comfort while pruning
- Spring-loaded to take strain off the gardener's hands
- Quality stainless steel remains sharp and untarnished even through heavy use



Titanium Coated Blade Precision Pruners - Straight & Curved

Incredibly sharp durable coated titanium pruners allow gardener's to prune accurately, with minimum effort. Available with straight or curved blades.

- Coated titanium remains untarnished and retains its sharp edge
- Soft grips for comfort while pruning
- Spring-loaded to take strain off the gardener's hands



Stainless Steel Curved Shears

Robust shears with sharp, stainless steel blades and ergonomically designed handles.

- Ergonomically designed handles for comfortable, easy use
- Quality stainless steel remains sharp and untarnished even through heavy use



Stainless Steel Mini Clippers

Perfect for fine pruning and trimming, these stainless steel clippers come in a box of 12.

- Quality stainless steel remains sharp and untarnished even through heavy use
- Mini blades ideal for precision trimming

**PACK
OF 12**

12-570-200	Stainless Steel Straight Blade Precision Pruners
12-570-205	Stainless Steel Curved Blade Precision Pruners

12-570-220	Titanium Coated Straight Blade Precision Pruners
12-570-225	Titanium Coated Curved Blade Precision Pruners

12-570-240	Stainless Steel Curved Shears
-------------------	-------------------------------

12-570-245	Stainless Steel Mini Clippers - Pack of 12
-------------------	--------------------------------------------

GROWING ACCESSORIES | Microscopes



ESSENTIALS Illuminated Magnifier Loupe

A great little magnifier that provides a sharp, clear, enlarged image without distortion and features a swing-away protective lens cover that also serves as a handle.

- Easily identify pests or diseases
- The protective lens cover also serves as a handle, making handling far easier and comfortable
- Built-in light provides targeted illumination
- Includes protective pouch and instructions
- Batteries included

ESSENTIALS Illuminated Microscopes

Simply place the base of the microscopes on to the specimen and adjust the focus by gently turning the focusing dial until your item comes into perfect view.

- Easily identify pests or diseases
- 60x to 100x magnification
- Built-in light provides targeted illumination
- Includes protective pouch and instructions
- Batteries included

PHONESCOPE

Quick and easy magnification using your mobile.

- Take amazing magnified photos and videos
- Easily attaches directly to your mobile or tablet
- Up to 30x magnification using your device's digital zoom

Thermometer

Ideal for monitoring the temperature levels in your growroom.

- Measures temperatures in both °C and °F
- Contains no mercury

ESSENTIALS

10-465-030	ESSENTIALS Illuminated Magnifier Loupe
------------	----------------------------------------

ESSENTIALS

10-465-035	ESSENTIALS Illuminated Microscope (60x - 100x)
10-465-040	ESSENTIALS Illuminated Microscope (100x)

10-465-080	PHONESCOPE
------------	------------

09-435-045	Plastic Thermometer
------------	---------------------

Irrigatia Automatic Watering | **GROWING ACCESSORIES**



Irrigatia C12 Solar Automatic Watering System

This auto-irrigation system offers automatic watering for up to 12 irrigation units (that's 5 large hanging baskets or 12 x 20 litre pots!).

The SOL-C12 connects to the following Irrigatia Kits:

Drippers: Use for pots, baskets and individual plants

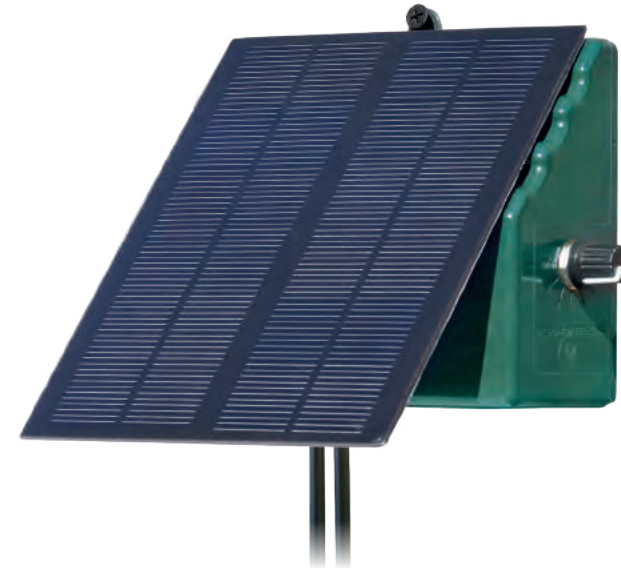
Seep hose: Ideal for short runs in a mixed dripper/seep hose environment, germinating seedlings, watering plant troughs and small beds

Contents:

- 1 x SMART Controller C12 with integrated pump
- 1 x Inlet Filter
- 1 x Anti-siphon Device
- 15 m Tube
- 12 x each: Drippers, Stakes, Tees
- 1 x Water Level Sensor
- 3 x AA batteries



13-635-105	Irrigatia C12 Solar Automatic Watering System
-------------------	-----------------------------------------------



Irrigatia C24 Solar Automatic Watering System

This auto-irrigation system offers automatic watering for up to 12 irrigation units (that's 12 large hanging baskets or 24 x 20 litre pots!).

The SOL-C24 connects to the following Irrigatia Kits:

Drippers: Use for pots, baskets and individual plants

Seep hose: Ideal for short runs in a mixed dripper/seep hose environment, germinating seedlings, watering plant troughs and small beds

Microporous Hose: Ideal for flower beds, raised beds, vegetable plots, fruit trees and fruit cages

Contents:

- 1 x SMART Controller C24 with integrated pump
- 1 x Inlet Filter
- 1 x Anti-siphon Device
- 15 m Tube
- 12 x each: Drippers, Stakes, Tees
- 1 x Water Level Sensor
- 3 x AA batteries



13-635-110	Irrigatia C24 Solar Automatic Watering System
-------------------	-----------------------------------------------

GROWING ACCESSORIES | Irrigatia Automatic Watering



Irrigatia Micro Porous Hose

A unique system that distributes water through millions of microscopic pores using durable DuPont Tyvek tubes, that resist the clogging, cracking and root intrusion problems common to other drip systems.

- These are ideal for longer runs in vegetable and flower beds and can be connected to the SOL-C12 (only half of the roll will be required) or SOL-C24 unit in up to 25 m lengths
- Each 25 m roll comes with 2 adaptors, 2 connectors, 2 lengths of connector pipe, 2 O rings, 2 cable ties and 6 stakes



Irrigatia 12 Dripper Extension Kit

Complete with 15 m of tube and 12 of each drippers, stakes and t-pieces, this 12 dripper extension kit extends the C12 to a 24 dripper system with 30m of tube.

- Please note that adding more than 12 drippers to the C12 reduces the amount of water supplied to each dripper



Irrigatia Seep Hose Extension Kit

If you want to extend the water emission over a longer area then you can use the Irrigatia Seep hose Extension kit that connects directly onto a dripper.

- Ideal for raised beds, seed trays or even tree root establishment
- Connect up to 1m of seep hose directly onto the dripper or a 2 m length with a dripper at either end
- Comes with 12 m of seep hose, 12 stoppers, 2 connectors and 12 stakes



13-635-150 Irrigatia Micro Porous Hose & Fittings - 25 m



13-635-155 Irrigatia 12 Dripper Extension Kit



13-635-160 Irrigatia Seep Hose Extension Kit

Pebbles, Coco & Soil Conditioning | GROWING MEDIA



PLANT!T Clay Pebbles

PLANT!T Clay Pebbles are made from 100% natural clay, they are clean, pH and EC stable, and offer great aeration and drainage.

- Due to their unique structure and large surface area, they offer the ideal environment to foster beneficial bacterial growth around the root zone, leading to healthier plants.



02-050-050	PLANT!T Clay Pebbles 10 L Bag
------------	-------------------------------



PLANT!T Potting Soil

PLANT!T Potting Soil is an organic, peat free coco soil that contains natural trichodermas and is ideal for both indoor and outdoor use.

- Comes in a transparent bag that allows you to mix the substrate with water immediately to avoid any mess in your house
- Lightweight, compact and easy to carry, so no more struggling with large soil bags!



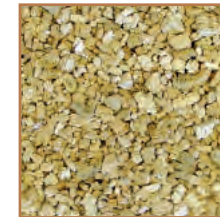
02-055-320	PLANT!T Potting Soil - 15 L
------------	-----------------------------



PLANT!T Perlite

PLANT!T Perlite is a natural pH neutral sterile growing medium derived from volcanic rock which is great for improving the aeration and drainage of your soil.

- Achieve faster germination and striking of cuttings due to superior air to water ratio
- Can aid in the breaking up of heavy soils, simply mix with potting soil and it will keep the soil loose and light
- Great for repairing/laying down lawns - gives additional aeration and drainage when raked into spiked holes
- Ideal for planting trees and shrubs - loosens and aerates soil to encourage root development



02-065-005	PLANT!T Perlite 100 L Bag
02-065-015	PLANT!T Perlite 10 L - Box of 6 Bags



PLANT!T Vermiculite

PLANT!T Vermiculite is a natural sterile soft mica mineral with great water holding and insulation properties.

- Excellent water holding capabilities makes it an excellent addition to sandy soils or dried out ground
- Offers a high cation exchange capacity which means it will slowly release nutrients back to your plant which it has absorbed during watering
- Easy and safe to handle and odourless whilst also being lightweight and simple to use
- Our vermiculite grade is V3 Medium, which is a nominal size range 2.0-5.0 mm



02-070-005	PLANT!T Vermiculite 100 L Bag
02-070-015	PLANT!T Vermiculite 10 L - Box of 6 Bags

GROWING MEDIA | Soil & Coco



PLANT!T Reduced Peat Pro Soil

Vegetables, fruits, flowers and herbs will all thrive when grown in PLANT!T Reduced Peat Pro Soil. Perfect for plant pots and improving flower beds, it is packed with beneficial bacteria and has a high nutrient content to help with plant growth, and to keep plants healthy.

- Unique soil blend designed for a bumper yield
- Added beneficial microbes produce bigger and better plants
- Wood fibres improve drainage, provide excellent aeration and makes re-wetting easy
- Feeds plants for up to 4 weeks by just adding water
- Reduced peat mix for today's eco-minded grower



02-075-255 | PLANT!T Reduced Peat Pro Soil - 50 L Bag



PRO7 Light

A natural, clean and light; an air enriched peat based potting mix that gives you the control. It sets itself apart from other substrates through its use of the purest raw materials, that conform to the strictest RHP standards.

- It has a superb air to water relationship, ensuring optimal drainage throughout whilst creating ideal air filled porosity for almost every method of cultivation
- Strong, rapid rooting through low EC value and optimal air to water ratio
- Charged to kickstart microbial life that builds plant strength and resilience
- Use for all phases of your plant's growth, rooting, growing and blooming



PRO7
made by **Jiffy**

02-075-300 | PRO7 Light, Peat Potting Mix – 50 L Bag



PRO7 Coco

Premium, peat free, coco from a guaranteed reliable and consistent source PRO7 Coco is one of the most stable coco substrates on the market today. 100% pith manufactured from the mature coconut husk and never compressed to retain its structure.

- Uses mature coconuts which means the pith will decay slower, thus giving a more stable media over the growing cycle.
- Washed and buffered with calcium and magnesium to RHP standards - extracting unwanted elements such as potassium, sodium and chlorides
- Has excellent water retention and airing properties
- Guaranteed low EC value with stable pH



PRO7
made by **Jiffy**

02-055-350 | PRO7 Coco, 100% Pure Coco – 50 L Bag



PRO7 Coco 70/30

PRO7 Coco 70/30 contains a combination of two high quality substrates: 70% RHP Certified coco pith mixed fibre substrate with excellent air and water retention properties and 30% perlite.

- A fully buffered coco that is really easy to use and is a universal substrate for both the growth stage as well as the flowering stage
- A coco/perlite mix, providing good structure and improved drainage when hand-watering - results in better root development
- Perfect for timed irrigation too, with higher AFP (Air-Filled porosity)
- Better rootzone temperature control, aiding growth in young plants
- Peat free



PRO7
made by **Jiffy**

02-055-360 | PRO7 Coco 70/30, Coco Perlite Mix – 50 L Bag



PRO7 Coco Block

The perfect choice for growers that use a lot of coco and want it to be easy to transport and store, but more cost effective than buying multiple PRO7 Coco Bricks.

- Fast expansion - makes 70 L of loose fill substrate!
- Made of a premium mixed fibre cocopeat with excellent air and water retention properties
- Recommended for short-term fast-growing crops
- Premium quality RHP washed and buffered coco
- Peat Free



02-055-370 PRO7 Coco Block 5 kg (70 L)



PRO7 Coco Bricks

A 100% RHP Certified brick of pressed and dehydrated premium mixed fibre coconut coir pith. It is washed/buffered and charged with added trace elements and beneficial elements, making it ideal for an all-round potting substrate that is easy to transport and store, aids faster rooting and develops stronger plants.

- Easy to transport and store due to its compressed nature
- Fast expansion - each brick makes 8 L of loose fill substrate!
- Made of a premium mixed fibre cocopeat with excellent air and water retention properties
- Premium quality RHP washed and buffered coco
- Peat free



02-055-380 PRO7 Coco Brick 8 L – Box of 24



PRO7 Coco Cubes

PRO7's purified, stabilized Coco Cube substrate is carefully selected at Jiffy's own production site; washed/buffered to RHP standards and charged with added trace elements and beneficial elements to aid faster rooting to develop stronger plants.

- Ideal for cuttings and seedlings
- Excellent air and water retention properties
- Air pruning – allows the roots to grow through its sides so, when potting-on, plants get established faster
- Better rootzone temperature control, aiding growth in young plants
- Complete with seedling hole in the top to accommodate Jiffy7C pellets or direct seeding
- Limits damaging root system when potting on
- Premium quality RHP washed and buffered coco
- Peat free



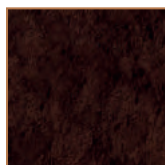
02-055-390 PRO7 Coco Cube 100 mm (4") - Box of 92



Biobizz Coco Mix

An organic substrate that can be used in combination with specialist coco nutrients such as PLANTIT Coco Feed.

- Made from waste materials left over by the coconut industry, which has proven to be an ideal medium for growing plants
- Due to its neutral structure, it is also ideal to mix into pre-used soil allowing the grower to recycle old substrate (flush your soil first)
- The pH falls between 5-6 and can be used in all hydroponic media systems



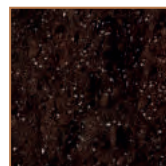
BIOBIZZ
WORLD WIDE ORGANICS

02-055-025 Biobizz Coco-Mix - 50 L Bag

Biobizz Light-Mix Potting Soil

An ideal potting soil for organic gardeners who want to have control over the growing process through the application of liquid fertilisers.

- Ensures a fast development of roots and vigorous new growth
- Made from Baltic Peat, the best source of peat offering a light fluffy texture with high air exchange
- Specially blended to ensure optimal drainage throughout - an essential property if you use automatic irrigation systems



BIOBIZZ
WORLD WIDE ORGANICS

02-075-100 Biobizz Light-Mix Potting Soil - 50 L Bag

02-075-105 Biobizz Light-Mix Potting Soil - 20 L Bag

Biobizz All-Mix Potting Soil

This heavily pre-fertilized substrate mixture emulates a rich outdoor soil with a full micro active ecosystem. It's been designed to have enough nutrient-fuelled power to sustain lush growth for a couple of weeks, without any need to add any extra fertilizer.

- Creates the optimum environment for plants to flourish throughout the year
- Pre-fertilized so it emulates a rich outdoor soil with a full micro active ecosystem



BIOBIZZ
WORLD WIDE ORGANICS

02-075-110 Biobizz All-Mix Potting Soil - 50 L Bag

02-075-115 Biobizz All-Mix Potting Soil - 20 L Bag

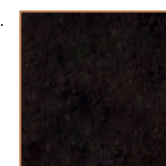
Biobizz Pre-Mix

A dry fertiliser comprised of 100% natural ingredients derived from organic matter, rock meal and trace elements.

- Microbially active blend was formulated to guarantee vigorous growth, abundant flowering and maximum resistance to disease and fungal attack

Tip

Make your own soil mixture: (1000 L) 50% Potting Soil or Coco-Mix (500 L), 30% Perlite (300 L), 15% Biobizz Worm-Humus (150 L) and 5% Pre-Mix (50 L). Important: well and evenly



BIOBIZZ
WORLD WIDE ORGANICS

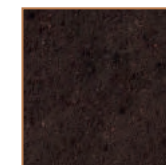
05-225-005 Biobizz Pre-Mix 5 L Tub

05-225-010 Biobizz Pre-Mix 25 L Tub

Biobizz Worm-Humus

A 100% organic worm manure of a very high quality.

- To be used in the rejuvenation of All-Mix or for use in potting mixtures, garden beds etc.



BIOBIZZ
WORLD WIDE ORGANICS

05-225-015 Biobizz Worm-Humus 40 L Bag



Biobizz Bio-Grow

Impressive growth during all the plant's development stages.

- Complete fertilizer that can be used throughout the growing and flowering period
- A rich food source for beneficial soil microbes
- Use with most types of soil and substrate mixtures

Biobizz Bio-Bloom

The perfect diet for exuberant flowers.

- 100% organic, complete liquid fertilizer
- Contains blend of nitrogen, phosphorous and potassium, along with enzymes and amino acids

Biobizz Alg-A-Mic

The 100% organic way to make plants less stressed and more productive.

- Made from a high grade, 100% organic seaweed concentrate
- Ensures green leaves by stimulating chlorophyll absorption
- Contains a low level of NPK (Nitrogen, Phosphorus and Potassium) - making it impossible to overdose

Biobizz Fish-Mix

The power of the sea, concentrated in your pot. A rich infusion of organic fish emulsion from the North Sea, mixed together with extract of 100% organic Dutch sugar beet.

- Stimulates the production of microorganisms and useful bacteria in all types of soil and coco-based substrates
- For use on all kinds of plants during the first stages of growth, and during the flowering period until harvest
- Mild enough to be used in the first stages of a plant's life or sprayed directly onto leaves

BIOBIZZ
WORLD WIDE ORGANICS

05-225-018	Biobizz Bio-Grow 250 ml
05-225-020	Biobizz Bio-Grow 500 ml
05-225-025	Biobizz Bio-Grow 1 L
05-225-030	Biobizz Bio-Grow 5 L
05-225-035	Biobizz Bio-Grow 10 L
05-225-037	Biobizz Bio-Grow 20 L

BIOBIZZ
WORLD WIDE ORGANICS

05-225-048	Biobizz Bio-Bloom 250 ml
05-225-050	Biobizz Bio-Bloom 500 ml
05-225-055	Biobizz Bio-Bloom 1 L
05-225-060	Biobizz Bio-Bloom 5 L
05-225-065	Biobizz Bio-Bloom 10 L
05-225-067	Biobizz Bio-Bloom 20 L

BIOBIZZ
WORLD WIDE ORGANICS

06-300-003	Biobizz Alg-A-Mic 250 ml
06-300-005	Biobizz Alg-A-Mic 500 ml
06-300-010	Biobizz Alg-A-Mic 1 L
06-300-015	Biobizz Alg-A-Mic 5 L
06-300-020	Biobizz Alg-A-Mic 10 L
06-300-022	Biobizz Alg-A-Mic 20 L

BIOBIZZ
WORLD WIDE ORGANICS

06-300-023	Biobizz Fish-Mix 250 ml
06-300-025	Biobizz Fish-Mix 500 ml
06-300-030	Biobizz Fish-Mix 1 L
06-300-035	Biobizz Fish-Mix 5 L
06-300-040	Biobizz Fish-Mix 10 L
06-300-042	Biobizz Fish-Mix 20 L

NUTRIENTS & ADDITIVES | Biobizz



Biobizz Root-Juice

The first step towards an amazing harvest. Made entirely from vegetable ingredients and designed for organic gardening, Root-Juice combines two amazing natural substances: premium humic acid and seaweed.

- Encourages vigorous root development
- Enhances the health of the natural biological life that surrounds the root zone
- Ideal for soil, peat and coco mixes, as well as guaranteed root protection with hydroponic and aeroponic systems

BIOBIZZ
WORLD WIDE ORGANICS

06-300-045	Biobizz Root-Juice 250 ml
06-300-047	Biobizz Root-Juice 500 ml
06-300-050	Biobizz Root-Juice 1 L
06-300-055	Biobizz Root-Juice 5 L
06-300-056	Biobizz Root-Juice 10 L
06-300-057	Biobizz Root-Juice 20 L

Biobizz Top-Max

Taste, nuance, and aroma taken to the top with Top-Max, the 100% organic flowering stimulator.

- Humic and fulvic acids work together to boost the energy in plant cells while stimulating new cells to form
- Increases size, weight and taste of fruit/flowers
- Can be used throughout the entire flowering period

BIOBIZZ
WORLD WIDE ORGANICS

06-300-059	Biobizz Top-Max 250 ml
06-300-060	Biobizz Top-Max 500 ml
06-300-065	Biobizz Top-Max 1 L
06-300-070	Biobizz Top-Max 5 L
06-300-075	Biobizz Top-Max 10 L
06-300-077	Biobizz Top-Max 20 L

Biobizz Bio-Heaven

The 100% organic metabolic stimulator: your plants will look forward to complete, all-round nirvana with Bio-Heaven.

- Stimulates enzymatic activity and fast nutrient absorption
- Increases the chelate of essential macro and micronutrients
- Use during the entire growing and flowering period on every type of substrate, coco mix or hydroponic systems

BIOBIZZ
WORLD WIDE ORGANICS

06-300-100	Biobizz Bio-Heaven 250 ml
06-300-105	Biobizz Bio-Heaven 500 ml
06-300-110	Biobizz Bio-Heaven 1 L
06-300-115	Biobizz Bio-Heaven 5 L
06-300-117	Biobizz Bio-Heaven 10 L
06-300-118	Biobizz Bio-Heaven 20 L

Biobizz Acti-Vera Botanic Activator

Acti-Vera has been designed to protect the immune system, increase metabolism and enhance nutrient absorption in all sorts of plants.

- Protects and activates the immune system, increases germination and plant metabolism
- Can be used indoors and out, on food crops, plantations, perennials, and ornamental plants
- Use during the vegetative and flowering phase to stimulate growing and blooming young plants

BIOBIZZ
WORLD WIDE ORGANICS

06-300-120	Biobizz Acti-Vera Botanic Activator 250 ml
06-300-125	Biobizz Acti-Vera Botanic Activator 500 ml
06-300-130	Biobizz Acti-Vera Botanic Activator 1 L
06-300-135	Biobizz Acti-Vera Botanic Activator 5 L
06-300-140	Biobizz Acti-Vera Botanic Activator 10 L
06-300-145	Biobizz Acti-Vera Botanic Activator 20 L



Biobizz CALMAG

Organic and certified. Biobizz CALMAG has been designed for the professional grower and the hobbyist that needs an extra boost of Calcium and Magnesium in their grow.

- 100% organic and certified solution for Ca/Mg deficiencies
- Does not alter an existing feeding regime



Biobizz Bio-PH-

Lower pH without lowering your substrate's nutrient power.

- Aqueous solution made of citric acid found naturally in different citrus fruits, such as lemons
- Enables fast pH adjusting of any type of substrate and for any type of crop
- Suitable to be used during both the growing and the flowering period
- Doesn't contain any strong acids. This means that this 100% organic pH regulator doesn't harm the substrate micro life



Biobizz Bio-PH+

Raise pH in an easy, controlled, and harmless way.

- Humic acid based formulation harvested from natural sources
- Enables fast pH adjusting of any type of substrate and for any type of crop
- Suitable to be used during both the growing and the flowering period
- Doesn't contain any strong acids. This means that this 100% organic pH regulator doesn't harm the substrate micro life



Biobizz Leaf-Coat

A ready-to-use plant strengthener that can be applied to plants growing in soil, coconut substrate and stone-wool up to two weeks before the end of the flowering period.

- Strengthens plants and gives them a powerful expelling effect on harmful insects. It also prevents damaging leaf fungi
- Made from natural latex which was developed to restrain evaporation.
- Forms a very thin elastic layer of 1.5 micron on the leaves, which contains the nutritious elements for the plant. Its effect will last up to two weeks until it is decomposed by light or sunlight
- Extremely suitable for use as an environmentally friendly alternative to pesticides

BIOBIZZ
WORLD WIDE ORGANICS

06-300-150	Biobizz CALMAG 250 ml
06-300-155	Biobizz CALMAG 500 ml
06-300-160	Biobizz CALMAG 1 L
06-300-165	Biobizz CALMAG 5 L
06-300-170	Biobizz CALMAG 10 L

BIOBIZZ
WORLD WIDE ORGANICS

09-420-210	Biobizz Bio-PH- 250 ml
09-420-215	Biobizz Bio-PH- 500 ml
09-420-220	Biobizz Bio-PH- 1 L
09-420-225	Biobizz Bio-PH- 5 L

BIOBIZZ
WORLD WIDE ORGANICS

09-420-240	Biobizz Bio-PH+ 250 ml
09-420-245	Biobizz Bio-PH+ 500 ml
09-420-250	Biobizz Bio-PH+ 1 L
09-420-255	Biobizz Bio-PH+ 5 L

BIOBIZZ
WORLD WIDE ORGANICS

10-475-500	Biobizz Leaf-Coat 500 ml (incl. Spray Nozzle)
------------	-----------------------------------------------

NUTRIENTS & ADDITIVES | Biobizz



Biobizz Starters-Pack

Are you someone with strong organic beliefs? Do you care about the future of the planet? Is it quality above quantity – or more about the flavour and the colour of your crop that matters? Whatever your concerns or goals, choose Biobizz and the rest is easy.

- Fully loaded with everything you need to begin your own growing adventure



Biobizz Try-Packs

Indoor Pack

If indoor cultivation is your choice and you don't know how to start, let Biobizz make it easy for you.

The Indoor Pack contains Bio-Bloom, Bio-Grow, and Top-Max. A combination that will allow the grower to gain experience with the Biobizz organic fertilizers range as it provides basic feeding for 1-4 plants.

Outdoor Pack

If the climate in your region allows it and outdoor cultivation is your choice, but you don't know how to start, then try the Outdoor Pack from Biobizz.

Biobizz Fish-Mix contained in this pack boosts all of the natural minerals and (micro) organisms and stimulates the production of useful bacteria. The high levels of proteins will also help to create a rich organic outdoor substrate. But remember, don't try it at home or you will have to keep the windows open for a week!

Stimulant Pack

Do your plants need a boost? The Stimulant Pack from Biobizz could be just what you need.

The Stimulant Pack contains Root-Juice, Top-Max, and Alg-A-Mic; a combination that will allow both the hydroponic and the organic grower to gain experience with the Biobizz organic stimulant range as it provides basic feeding for 1-4 plants.

An ideal pack if you wish to take a step further and get the maximum out of your harvest organically. With the Biobizz Stimulant Pack, you will get sweeter taste, bigger plants, and better results than ever, even hydroponically!

Hydro Pack

Do you grow hydroponically but you are tired of feeding minerals to your plants? Do you want to enjoy the natural taste of an organic harvest but can't let your system go? Let Biobizz make it easy for you with the Hydro Pack.

The Hydro Pack contains Bio-Bloom, Bio-Heaven, and Top-Max. A combination that will allow the hydroponic grower to gain experience with the Biobizz organic products that are suitable to be applied in any hydroponic system.

Get the best of both worlds with the organic quality and the hydroponic quantity. The Hydro Pack will stimulate an optimal root development and protection by using organics in your hydro system.

BIOBIZZ
WORLD WIDE ORGANICS

05-225-200 Biobizz Starters-Pack

BIOBIZZ
WORLD WIDE ORGANICS

05-225-205	Biobizz Try-Pack - Indoor Pack
05-225-210	Biobizz Try-Pack - Outdoor Pack
05-225-215	Biobizz Try-Pack - Stimulant Pack
05-225-220	Biobizz Try-Pack - Hydro Pack



PLANT!T Fruit Booster

A PK additive containing optimised levels of readily available phosphorus and potassium in an ideally accessible form for uptake by your plants.

- Contains magnesium and sulphate which enhances plant utilisation of phosphorus and potassium



PLANT!T

06-335-005 PLANT!T Fruit Booster 250 ml



PLANT!T Hydro Feed

A complete balanced liquid fertiliser containing all the essential micro and macronutrients for healthy plants and higher yields.

- Specially formulated for growing tomatoes, chillies, peppers and other capsicum in recirculating hydroponic systems along with hydroponic growing media such as clay pebbles



PLANT!T

05-260-200 PLANT!T Hydro Tomato Feed 1 L

05-260-260 PLANT!T Hydro Chilli & Pepper Feed 1 L



PLANT!T Coco Feed

A complete balanced liquid fertiliser containing all the essential micro and macronutrients for healthy plants and higher yields.

- Specially formulated for growing tomatoes, chillies, peppers and other capsicum in coco coir growing media



PLANT!T

05-260-220 PLANT!T Coco Tomato Feed 1 L

05-260-280 PLANT!T Coco Chilli & Pepper Feed 1 L



PLANT!T Earth Feed

A complete balanced liquid fertiliser containing all the essential micro and macronutrients for healthy plants and higher yields.

- Specially formulated for growing tomatoes, chillies, peppers and other capsicum
- For the best results use PLANT!T Feeds alongside PLANT!T Reduced Peat Pro Soil to ensure your plants are provided with their complete nutrient requirements



PLANT!T

05-260-240 PLANT!T Earth Tomato Feed 1 L

05-260-300 PLANT!T Earth Chilli & Pepper Feed 1 L

NUTRIENTS & ADDITIVES | Plant Tonic & Bat Guano



SUPERthrive Plant Tonic

The world renowned SUPERthrive is a great plant tonic and general growth promoter. Plants require more than one vitamin for optimum performance. SUPERthrive is full of vitamins.

- SUPERthrive is NOT a fertiliser, but an additive
- Use SUPERthrive on any plant at any stage of growth or flower. On indoor plants, it brings out more new flower and leaf buds. On outdoor plants and bare-rooted plants, it starts new root and foliage action. It helps develop earlier and larger flowers as well as being a great stress reliever to plants
- Use on seeds to help during germination and get earlier vegetable and flower crops, to revive sick plants or to help plants recover from any stress or to guard against transplant shock

SUPERthrive

06-260-020	SUPERthrive 120 ml (4 oz)
06-260-025	SUPERthrive 480 ml (Pint)
06-260-030	SUPERthrive 960 ml (Quart)
06-260-035	SUPERthrive 3.8 L (Gallon)
06-260-040	SUPERthrive 9.4 L (2.5 Gallon)



VitaLink Bat Guano

Bat Guano is bat faeces that have been composted over hundreds of years to produce an odourless, high phosphorus fertiliser. Elements such as Nitrogen, Phosphorus and Potassium are found in Bat Guano which are highly beneficial to plant growth and make the product an ideal fertiliser or soil conditioner.

- Provides a rich, potent, 100% organic fertiliser which ensures rapid, high quality root growth and bud development
- A slow release, natural fertiliser, it contains many of the macronutrients and micronutrients which help to grow healthier, stronger plants that are more resistant to pests and disease
- Soil builder & cleanser - improves the condition of soil and encourages a rich microbial life which can break down toxins in the soil.
- Compost activator that encourages beneficial microbes which can speed up composting
- High cationic exchange which increases a plant's ability to feed
- Assists plants to resist fungal attacks



05-235-005	VitaLink Bat Guano 700 g
05-235-010	VitaLink Bat Guano 3.5 kg





LightHouse ECOHEAT Greenhouse Heaters

ECOHEAT Heaters produce a stable heat to protect plants against sudden temperature fluctuations and protect against frost. Ideal for use in propagation areas where ambient temperatures are required.

- Helps reduce humidity and condensation when growing indoors thus protecting against fungal attack
- More economical than a fan heater, cleaner and safer than paraffin heaters
- Cheap-to-run, similar to an ordinary light bulb and 25% less than most similar tube heaters
- IP55 rated, splash and sprinkler resistant



09-435-250	LightHouse ECOHEAT 45 W Greenhouse Heater - 305 mm
09-435-255	LightHouse ECOHEAT 80 W Greenhouse Heater - 608 mm
09-435-260	LightHouse ECOHEAT 135 W Greenhouse Heater - 915 mm
09-435-262	LightHouse ECOHEAT 240 W Greenhouse Heater - 1220 mm



LightHouse 2 kW Greenhouse Heater

This 2 kW heater is robust, reliable and simple to use with a built-in fan to keep air moving over the two heating elements.

- Dual use – can be used as both a heater and a fan
- Thermostatically controlled with a choice of three heat settings
- Not suitable for control by external thermostats

Technical Specifications

Power	2025 W
Input	230 V
Frequency	50 Hz



09-435-280	LightHouse 2 kW Greenhouse Heater
------------	-----------------------------------



LightHouse 3 kW Greenhouse Heater

A powerful, 3 kW output means it can quickly and effectively heat up large spaces or act as a fan if required.

- Dual use – can be used as both a heater and a fan
- Thermostatically controlled with a choice of three heat settings
- Simple and robust design, easy to assemble
- Quiet Running

Technical Specifications

Power	3050 W
Input	220-240 V
Frequency	50 Hz



09-435-290	LightHouse 3 kW Greenhouse Heater
------------	-----------------------------------

PROPAGATION | Plugs



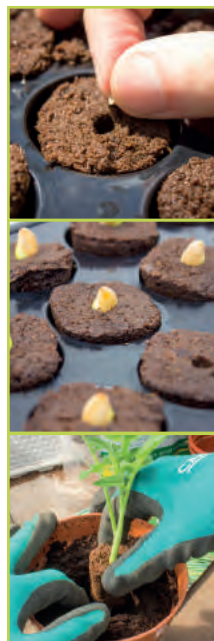
ROOT!T Natural Rooting Sponges Refill Bag - 50 Plugs

Maximise your success rates and grow faster, more vigorous roots with our specially manufactured ROOT!T Natural Rooting Sponges. Create the ideal micro-climate for seeds and cuttings meaning you will have higher success rates.

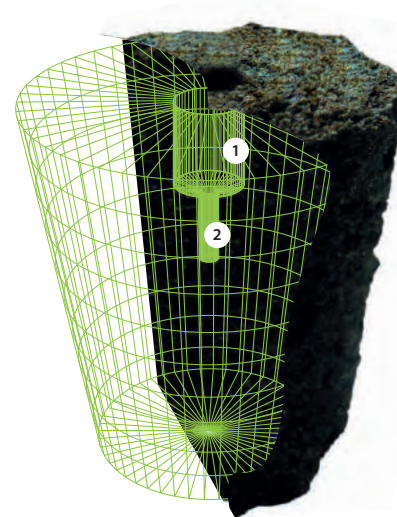
- Simply dampen the sponges, place your seeds in the pre-drilled holes, clip the propagator lid on top of the filled tray insert, and place somewhere with plenty of natural light.
- Resealable to help ensure that each ROOT!T Natural Rooting Sponge is kept in perfect condition.

Benefits

- Grow from seed - you can grow herbs, leafy greens, salads, vegetable, chillies and more directly from seed.
- Ideal for cuttings - Combine our sponges with the ROOT!T Rooting Gel for the best success rate on your cuttings.
- Effortless transportation - the sponges hold your roots together to prevent damaging them during transplantation.
- Great water retention - due to its structure, each plug retains the right amount of water without causing material compression.



02-090-210 ROOT!T Natural Rooting Sponges 50 Refill Bags - Box of 10



Unique Design

ROOT!T Natural Rooting Sponges are a breakthrough in organic technology. They are made from a mixture of peat and bark bonded together with plant-derived biodegradable polymers that allow the plug to biodegrade.

The ROOT!T Natural Rooting Sponges are specially designed to improve cutting strike rate and encourage faster germination.

Each ROOT!T Natural Rooting Sponge has two holes

Hole 1 is the perfect depth for most seeds, designed to a specific width to create an ideal humid micro-climate around the seed resulting in faster seed germination.

Hole 2 is perfect for gripping cuttings and will hold the cutting firmly in place. We recommend using ROOT!T Rooting Gel for better results; this will create a seal around the cutting preventing it from drying out.



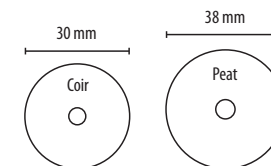
Jiffy-7 Expanding Plugs

These best-selling propagating plugs just require wetting. Drop in the seed or cutting and place in a propagator and off it grows. Sold throughout the world.

- Works great in NFT, simply drop your new seedlings into your SureGrow Gully

Benefits

- Stable structured substrate
- Environmentally friendly product
- Convenience
- Quality Assured



Jiffy

12-580-005 Jiffy-7 38 mm Peat Plug (Box of 1000)

12-580-010 Jiffy-7C 30 mm Coco Coir Plug (Box of 1155)



Jiffy-7 Tray

Purpose-made Jiffy tray fits 84 Jiffy-7C coco plugs, ideal for volume propagation.

- Great for volume propagation or to cut down to fit smaller propagators

Technical Specifications

Dimensions: 520 x 310 mm



12-580-050 | Jiffy 84 Cell Trays - Pack of 20

ROOT!T Value Propagator (Large)

Garland's largest unheated propagator.

- Robust injection moulded propagator ideal for years of use
- Large enough to fill with smaller trays or pots or multi cell inserts

Technical Specifications

Dimensions: 580 x 405 x 225 mm



12-550-030 | ROOT!T Large Propagator Tray - Box of 18

12-550-035 | ROOT!T Large Propagator Lid - Box of 18

12-550-040 | ROOT!T Large Propagator 60 Hole Insert - Box of 18



ROOT!T 24 Cell Filled Propagation Insert and Tray

Filled with ROOT!T Natural Rooting Sponges, it is durable and does not allow for any pooling, it really does help to grow big every time.

- Large drain hole to facilitate easy de-plugging
- Specially designed irrigation channels to rapidly remove excess water
- Fully recyclable HIPS (hi-impact polystyrene)
- Tough and durable
- Fits standard seed tray size propagators
- Consumable for existing ROOT!T Propagators



12-550-100 | ROOT!T Natural Rooting Sponge 24 Cell Filled Trays - Box of 8



ROOT!T Value Natural Rooting Sponge Propagation Kit (Large)

Garland's largest unheated propagator.

- Robust injection moulded propagator ideal for years of use
- Large enough to fill with smaller trays or pots or multi cell inserts

Technical Specifications

Dimensions: 570 x 370 x 200 mm



12-550-135 | ROOT!T Large Value Rooting Sponge Propagation Kit

PROPAGATION | Propagators



ROOT!T Value Natural Rooting Sponge Propagation Kit

Garland's largest unheated propagator.

- Robust injection moulded propagator ideal for years of use
- Large enough to fill with smaller trays or pots or multi cell inserts

Technical Specifications

Dimensions: 320 x 220 x 140 mm



ROOT!T Natural Rooting Sponge Propagation Kit

Garland's largest unheated propagator.

- Robust injection moulded propagator ideal for years of use
- Large enough to fill with smaller trays or pots or multi cell inserts

Technical Specifications

Dimensions: 380 x 240 x 185 mm



Stewart Unheated Propagators (Medium & Large)

Stewart's Propagators provide the ideal environment for raising seedlings and cuttings.

- Humidity and air temperature controlled via adjustable ventilation panels
- Durable clear cover, impact resistant, light, long life base tray - plant direct or in seed trays and pots

Technical Specifications

Medium Dimensions: 380 x 240 x 218 mm

Large Dimensions: 520 x 420 x 280 mm



Stewart Heated Propagators (Medium & Large)

Fixed temperature heated propagators featuring a sealed heating unit - insulation beneath the carbon heating mat maintains selected compost temperature at 15-20°C under normal conditions (the temperature can be affected by ambient temperature).

- Long-life heaters (8 W for the medium and 22 W for the large) which use less power than an ordinary light bulb

Technical Specifications

Medium Dimensions: 380 x 240 x 215 mm

Large Dimensions: 520 x 415 x 280 mm



12-550-145	ROOT!T Value Natural Rooting Sponge Propagation Kit - Box of 4
------------	----------------------------------------------------------------



12-550-150	ROOT!T Natural Rooting Sponge Propagation Kit - Box of 3
------------	----------------------------------------------------------



12-550-010	Stewart Medium Unheated Propagator
12-550-015	Stewart Large Unheated Propagator



12-550-050	Stewart Medium Heated Propagator
12-550-055	Stewart Large Heated Propagator



Stewart Large Variable Heated Propagator

Garland's largest unheated propagator.

- Robust injection moulded propagator ideal for years of use
- Large enough to fill with smaller trays or pots or multi cell inserts

Technical Specifications

Dimensions: 520 x 415 x 280 mm



Stewart
Garden

12-550-075 Stewart Large Variable Heated Propagator



Garland XL High Dome Unheated Propagator

Garland's largest unheated propagator.

- Robust injection moulded propagator ideal for years of use
- Large enough to fill with smaller trays or pots or multi cell inserts

Technical Specifications

Dimensions: 580 x 405 x 225 mm

Garland
PRODUCTS LIMITED

12-550-210 Garland XL High Dome Unheated Propagator



Garland XL High Dome Heated Propagator

Ideal for growers who want to grow seeds and cuttings in large volumes all year round.

- Features a 24 W heated base, which provides warmth to aid germination and young plant development
- Robust injection moulded propagator ideal for years of use
- Large enough to fill with smaller trays or pots or multi cell inserts

Technical Specifications

Dimensions: 590 x 410 x 265 mm (External)

Garland
PRODUCTS LIMITED

12-550-230 Garland XL High Dome Heated Propagator



MPL Unheated Propagators

Whether you're growing from seeds, or cloning plants within your grow tent, this propagator creates an ideal micro-climate for seeds and cuttings.

- Adjustable ventilation for humidity and air control
- Shatter resistant and crystal clear lid for maximum light exposure
- Unpackaged propagator

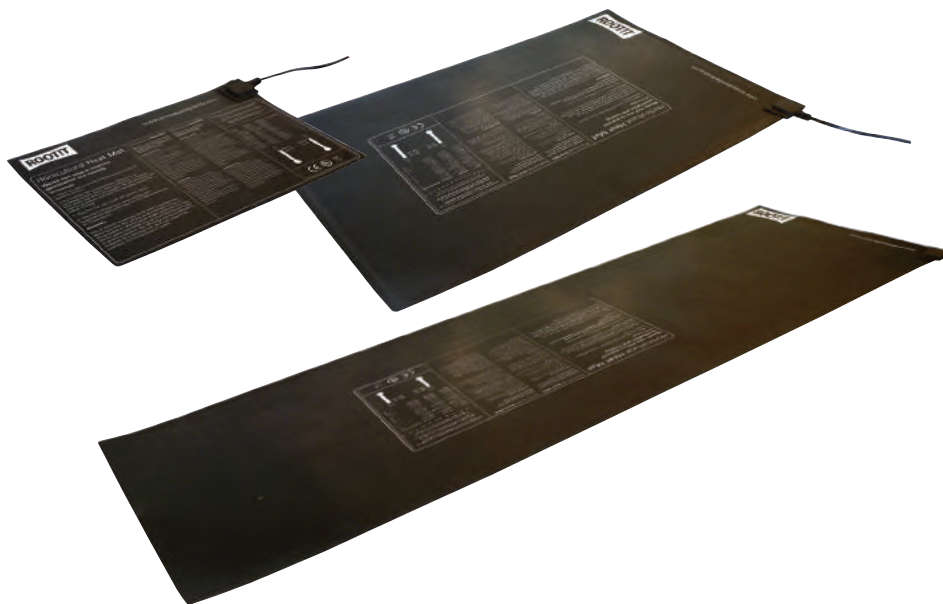
Technical Specifications

Medium Dimensions: 380 x 240 x 160 mm

Large Dimensions: 580 x 380 x 250 mm

12-550-250	MPL Unheated Propagator - Medium
12-550-255	MPL Unheated Propagator Base - Medium
12-550-260	MPL Unheated Propagator Lid - Medium
12-550-270	MPL Unheated Propagator - Large
12-550-275	MPL Unheated Propagator Base - Large
12-550-280	MPL Unheated Propagator Lid - Large

PROPAGATION | Propagators



ROOT!T Heat Mats

ROOT!T Heat Mats produce a offer more efficient, uniform heat, generated by the single mesh element encased inside a waterproof, frayproof matting.

- Tough and can withstand rugged greenhouse environments
- The heating element is encased in waterproof, fray-proof layers
- Available in three sizes to suit a variety of propagation set ups
- Suitable for use with the ROOT!T Propagation Kit and Insulated Mats



12-585-005	ROOT!T 9 W Heat Mat - Small (250 x 350 mm)
12-585-010	ROOT!T 25 W Heat Mat - Medium (400 x 600 mm)
12-585-015	ROOT!T 50 W Heat Mat - Large (400 x 1200 mm)

12-585-025	ROOT!T 9 W Heat Mat & Insulated Mat (Small) Bundle
12-585-030	ROOT!T 25 W Heat Mat & Insulated Mat (Medium) Bundle
12-585-035	ROOT!T 50 W Heat Mat & Insulated Mat (Large) Bundle



ROOT!T Hobby Heat Mats

Value heat mats for budget growers designed to gently and evenly warm seedlings.

- The heating element is encased in waterproof, fray-proof layers
- Available in three sizes to suit a variety of propagation set ups
- Suitable for use with the ROOT!T Propagation Kit and Insulated Mats



12-585-055	ROOT!T Hobby 11 W Heat Mat - (250 x 350 mm)
12-585-060	ROOT!T Hobby 30 W Heat Mat - (400 x 600 mm)
12-585-065	ROOT!T Hobby 60 W Heat Mat - (400 x 1200 mm)

12-585-200	ROOT!T Hobby 11 W Heat Mat & Insulated Mat Bundle
12-585-205	ROOT!T Hobby 30 W Heat Mat & Insulated Mat Bundle
12-585-210	ROOT!T Hobby 60 W Heat Mat & Insulated Mat Bundle



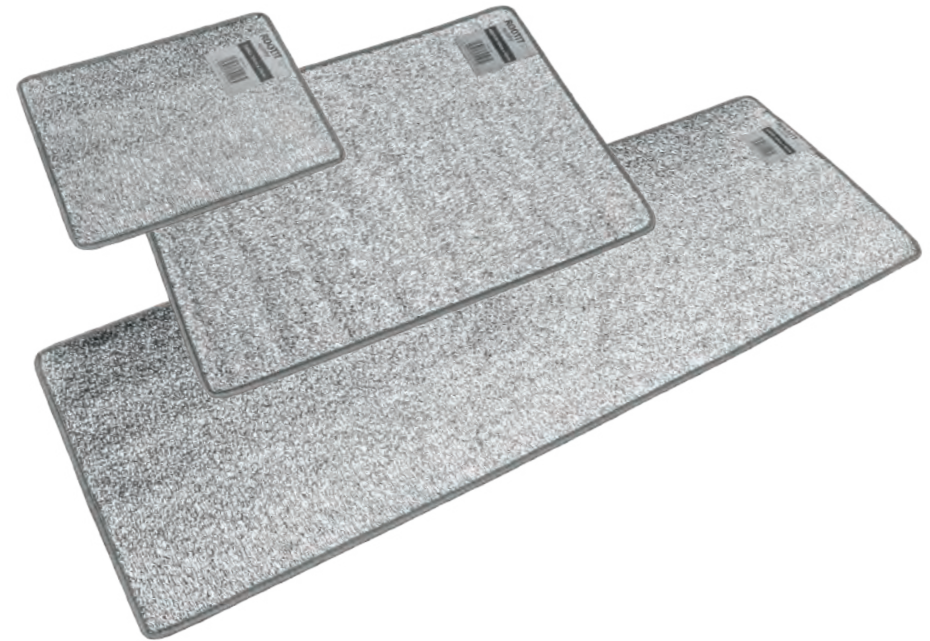
ROOT!T Heat Mat Thermostat

ROOT!T's electronic temperature controller is compatible with all heat mats and is an optional accessory for the ROOT!T Heat Mats.

- The thermostat turns the heat mat on and off to maintain optimum temperatures giving ultimate temperature control during propagation
- Maintain optimum temperatures for specific plants
- Easy plug-in operation
- Easy-to-use and control
- Temperature control range 20°C to 42°C
- 2 year warranty



12-585-105 ROOT!T Heat Mat Thermostat



ROOT!T Hobby Insulated Mats

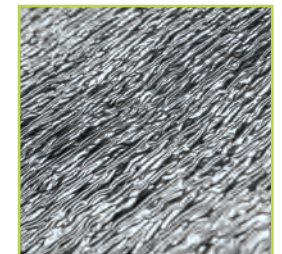
Simply placed underneath your heated propagation mat. This will ensure that sensitive surfaces are protected and all heat produced is directed upward into your propagator and not lost into work tops.

- Direct heat upwards
- Avoid heat loss into work tops
- Protect sensitive surfaces

**SUITABLE FOR
ALL TYPES OF
HEAT MAT**



12-585-155	ROOT!T Hobby Small Insulated Mat - (250 x 350 mm)
12-585-160	ROOT!T Hobby Medium Insulated Mat - (400 x 600 mm)
12-585-165	ROOT!T Hobby Large Insulated Mat - (400 x 1200 mm)





CDU
OF 10



CDU
OF 16



ROOT!T First Feed

Specially formulated to give young plants the best start in life. ROOT!T First Feed contains everything required for healthy growing during the propagation stage. This highly concentrated liquid feed is incredibly easy to use and is ideally suited for propagation plugs/sponges or transplanter blocks/pots.

- Promotes fast and healthy root development
- Proven to reduce standard rooting times
- Boosts resistance to infection and disease
- Increases your chance of success at this difficult and crucial stage
- Provides the basis for overall healthy plants



05-250-005	ROOT!T First Feed 125 ml - CDU of 10
-------------------	--------------------------------------

ROOT!T Rooting Gel

ROOT!T Rooting Gel is the first rooting gel specifically formulated for use with growing media. ROOT!T Rooting Gel helps natural root development of cuttings.

- Placed directly into the central cavity of the plug, the gel forms a seal around the cut surface of the cutting, aiding uptake and helping prevent dehydration and infection
- Works equally effectively with rooting sponges, stonewool plugs, peat plugs, coco coir plugs/fibre or compost
- No need for hormone rooting powder
- Use in combination with ROOT!T First Feed and ROOT!T Cutting Mist for the strongest rooting around!



12-560-115	ROOT!T Rooting Gel 150 ml - CDU of 16
-------------------	---------------------------------------

ROOT!T Cutting Mist

ROOT!T Cutting Mist helps to prevent losses in the critical first few days. It can be used to pre-treat donor plants 2-3 days before taking a cutting and also, to treat cuttings for the following 3 days.

- Ideal for use on soft and semi-hardwood material
- Best used with ROOT!T Rooting Gel, but can be used with other rooting products or even on its own



12-560-120	ROOT!T Cutting Mist - 100 ml
-------------------	------------------------------



Sicce Utility UltraZero Pump

Fully submersible, sits on the base of your nutrient tank and pulls nutrient from as little as 2 mm depth to ensure that no sludge forms.

- Made of thermoplastic and will not rust or corrode
- Features an easy access handle with a removable base for cleaning
- Designed and produced in Italy

Technical Specifications

Flow rate	3000 L/hr
Head Max.	3.1 m
Size	(Ø) 120 x (h) 150 mm
Cord	10 m
Discharge	3/4"



10-450-042 Sicce Utility UltraZero Pump - 3000 L/hr



BOYU Low Noise Air Pumps

Low noise air pumps with aluminium casing for long life, strength and good heat dissipation.

- Quiet running with high air flow
- A range of 5 pumps with flow rates ranging from 600 – 3600 litres per hour
- Fittings included

Technical Specifications

Pump	Flow Rate	Outlet	Power	Fittings (included)
SES-10	600 L/hr	Single 8 mm	10 W	4-way plastic manifold and hose
SES-20	1200 L/hr	Single 8 mm	15 W	6-way plastic manifold and hose
SES-30	1800 L/hr	Single 13 mm	25 W	6-way plastic manifold and hose
SES-40	2400 L/hr	Single 13 mm	30 W	6-way plastic manifold and hose
SES-60	3600 L/hr	Single 13 mm	35 W	8-way plastic manifold and hose

BOYU®

10-455-630	BOYU Low Noise Air Pump SES-10 - 600 L/hr
10-455-635	BOYU Low Noise Air Pump SES-20 - 1200 L/hr
10-455-640	BOYU Low Noise Air Pump SES-30 - 1800 L/hr
10-455-645	BOYU Low Noise Air Pump SES-40 - 2400 L/hr
10-455-650	BOYU Low Noise Air Pump SES-60 - 3600 L/hr



Guard'n'Aid Insect Catcher

Double-sided sticky fly traps for catching and identifying pests.

- Double-sided glue sheets used to monitor the presence of all flying insects
- Use sticky fly traps as part of your routine pest management (IPM) procedure to alert you to a problem before it becomes an infestation



10-475-050 Guard'n'Aid Insect Catcher CDU - 12 Packs



Guard'n'Aid Pest Pistol

A high quality sprayer is ideal for applying pest products to the plant, designed with a fine output.

- For foliar application



10-475-055 Guard'n'Aid Pest Pistol 750 ml



Pump Up Compression Sprayers

Spritz plants efficiently with this sprayer. Simply pressurise the bottle using the handy pump lid and spray!

- Handle features an on/off trigger to allow a constant stream of nutrients and water
- Adjustable nozzle allows growers to choose between a fine mist or a more direct spray

10-505-025 Pump Up Compression Sprayer - 2 L

10-505-030 Pump Up Compression Sprayer - 5 L



Guard'n'Aid PestOFF Plus Concentrate

A broad spectrum Pyrethrum-based contact insecticide for control of many sucking and biting insects including White Fly, Aphids, Thrip, Mites, Scale bugs, Caterpillars, Wool bug, Mealy bug, beetles and some wasp larvae.

- Effective against adult insects, some larval stages and eggs
- Contains the active ingredients of Natural Pyrethrum and a formulated addition of Rapeseed oil. Natural Pyrethrum is obtained from a species of chrysanthemum (*Chrysanthemum cinerariaefolium*) indigenous to Africa. The actual agent, Pyrethrin, is contained in the yellow petal heads of the plant
- Most effective when applied in the evening or early morning when temperatures are lower. The effectiveness decreases when temperatures are 25°C or higher
- This is a contact spray. Therefore the plants must be sprayed from all sides. The spray technique and application are very important to the effectiveness of the product
- We recommend a secondary spraying 5-7 days after the first application
- When dealing with Dracaenae thrips (Parthenothrips dracaenae), scales and mealy-bugs the second application should be sprayed after 14 days.



10-475-400 Guard'n'Aid PestOFF Plus Concentrate - 250 ml



**THIS
250 ML
BOTTLE MAKES
UP TO 22 X
750 ML READY
TO USE HAND
SPRAYS**

Guard'n'Aid PestOFF Plus Fumers

Permethrin-based smoke generators for use in controlling crawling and flying insects in difficult to reach places, growrooms and empty glasshouses.

- Please note: Guard'n'Aid PestOFF Plus Fumers are specifically for fumigating vacated areas and are not for treating plants. The room must be vacated for 4 hours after the treatment. ADVICE SHEET INCLUDED (contains Permethrin Synthetic Pyrethroid Insecticide)
- NOTE: MAXI FUMER IS FOR PROFESSIONAL USE ONLY

Technical Specifications

PestOFF Plus Mini Fumer - contains 2 x 3.5 g smoke generators

PestOFF Plus Midi Fumer - contains 1 x 15 g smoke generator

PestOFF Plus Maxi Fumer - contains 1 x 31 g smoke generator



10-475-405	Guard'n'Aid PestOFF Plus Mini Fumer - Pack of 2
10-475-410	Guard'n'Aid PestOFF Plus Midi Fumer
10-475-415	Guard'n'Aid PestOFF Plus Maxi Fumer

PEST CONTROL | Insecticides



Guard'n'Aid for Thrip

Pyrethrum-based targeted contact insecticide for use against Thrips in all edible and non-edible crops grown in outdoor and in protected situations.

- A contact insecticide specially developed for use against Thrips in all edible and non-edible crops grown in outdoor and protected situations, including hard surfaces.
- Controls some eggs, larval stages and adult Thrip
- Pyrethrins as a oil-based formulation with added Canola oil targets the respiratory organ and nervous system of insects, eradicating them
- Most effective when applied in the evening or early morning when temperatures are lower. The effectiveness decreases when temperatures are 25°C or higher



**THIS
250 ML
BOTTLE MAKES
UP TO 22 X
750 ML READY
TO USE HAND
SPRAYERS**

10-475-420 Guard'n'Aid for Thrip - 250 ml



Guard'n'Aid for SpiderMite

Pyrethrum-based targeted contact insecticide for use against SpiderMite and their eggs.

- A targeted contact insecticide for use against SpiderMite in all edible and non-edible crops grown in outdoor and protected situations. Controls eggs, larval stages and adult mites
- Pyrethrins as a oil-based formulation with added Canola oil targets the respiratory organ and nervous system of insects, eradicating them
- Canola oil also works extremely well against the egg stages of pests. This is especially important when dealing with red spider mites
- Most effective when applied in the evening or early morning when temperatures are lower. The effectiveness decreases when temperatures are 25°C or higher



**THIS
250 ML
BOTTLE MAKES
UP TO 16 X
750 ML READY
TO USE HAND
SPRAYERS**

10-475-425 Guard'n'Aid for SpiderMite - 250 ml



Guard'n'Aid Healthy Leaf & Bud

A concentrated preparation of naturally-occurring bacteria and nutrients to promote plant health in hydroponics and soil-based systems.

- Feeds and strengthens the leaf by adding beneficial bacteria, improves calcium absorption and uptake and will ensure that your leaves and buds grow strong and healthy even in the harshest of conditions
- Use alongside your standard nutrient program or as a boost when you see stress
- Contains naturally-occurring bacteria (*Bacillus subtilis*) at 5×10^8 cfu/g (colony forming units per gram) and essential nutrient Calcium in chelated form



**THE
250 ML
BOTTLE MAKES
UP TO 22 X
750 ML READY
TO USE HAND
SPRAYERS**

10-475-430 Guard'n'Aid Healthy Leaf & Bud - 250 ml

10-475-435 Guard'n'Aid Healthy Leaf & Bud - 1 L



**NATURALLY
DERIVED
BIOCIDE THAT
KILLS 99.9%
OF BACTERIA**



Guard'n'Aid Healthy Root

A concentrated preparation of naturally-occurring bacteria to promote plant and root health in hydroponics and soil-based systems.

- Restores the microbial balance by adding beneficial bacteria, improves nutrient availability and uptake and will ensure that your roots grow strong and healthy even in the harshest of conditions.
- Use alongside your standard nutrient program or as a boost when you see stress or browning of roots

Healthy roots



Stressed, unhealthy roots

After application, healthy roots grow



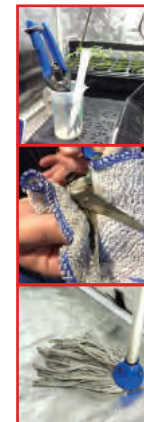
**ROOTS
WILL GROW
IN GOOD
OR BAD
CONDITIONS**

10-475-440	Guard'n'Aid Healthy Root - 250 ml
10-475-445	Guard'n'Aid Healthy Root - 1 L

Guard'n'Aid CleanRoom

A powerful, naturally derived cleaner and disinfectant based on fermentation extracts and plant-derived surfactants, for growrooms and greenhouses. Helping you to naturally clean & disinfect your growing area for ensuring healthy crops and a healthy growing environment.

- Keep your growroom and growing equipment/cutting blades clean and free from fungi and bacteria
- Kills 99.9% of bacteria as well as common plant pathogenic fungi, such as Fusarium and Botrytis
- Naturally derived Biocide
- Used to clean down a room and growing equipment in between crops. Not to be used directly on the crop.



10-510-010	Guard'n'Aid CleanRoom - 1 L
------------	-----------------------------

Guard'n'Aid OxyPlus

Liquid additive that can be used in hydroponic or soil systems to increase oxygen content and maintain system cleanliness.

- Can also be used in seed germination and as a preventative against Pythium



10-510-020	Guard'n'Aid OxyPlus 250 ml
10-510-025	Guard'n'Aid OxyPlus 1 L
10-510-030	Guard'n'Aid OxyPlus 5 L



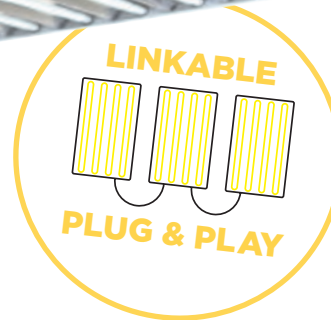
EnviroGro by LUMii T5 Lights

EnviroGro by LUMii's T5 Lights deliver performance and flexibility along with high Lumen output in any growing environment.

- These durable lights are ideal for small and large-scale propagation
- Low profile powder coated, pre-galvanized steel housing
- 2 m grounded power cord
- On/Off switch
- Outlet socket for daisy-chaining multiple units

Technical Specifications

Model	Lumen Output	Colour Temp.	IP Rating
60 cm 2 Lamp	Up to 4000 lm	6400 K	IP20
60 cm 4 Lamp	Up to 8000 lm		
122 cm 4 Lamp	Up to 16,400 lm		
122 cm 8 Lamp	Up to 32,800 lm		



More control for you: dual switches are featured on all models (except the 61 cm 2 lamp model). Switches allow half illumination of either inner or outer lamps illuminated or full illumination of all lamps.



03-140-050	EnviroGro by LUMii 60 cm (2 ft) 2 Lamp T5 Light
03-140-055	EnviroGro by LUMii 60 cm (2 ft) 4 Lamp T5 Light

03-140-060	EnviroGro by LUMii 122 cm (4 ft) 4 Lamp T5 Light
03-140-065	EnviroGro by LUMii 122 cm (4 ft) 8 Lamp T5 Light



EnviroGro by LUMii T5 Lamps

Replacement lamps for T5 Lights.

- Delivers performance and flexibility along with high lumen output in any growing environment



03-117-155	EnviroGro by LUMii 54.8 cm 24 W T5 Lamp (6400 K) - Box of 20
03-117-185	EnviroGro by LUMii 114.9 cm 54 W T5 Lamp (6400 K) - Box of 20





EnviroGro by LUMii TLED Tube

A single Tubular LED lamp designed for use within the EnviroGro by LUMii 60 cm TLED Fixture.

- Delivers performance and flexibility along with high lumen output in any growing environment
- 6400 K colour temperature



03-155-450 EnviroGro by LUMii 60 cm (2 ft) TLED Tube



E27 Grow Lights

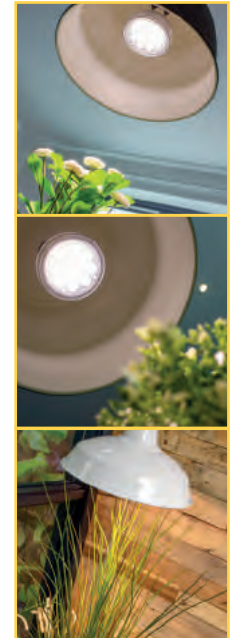
Our E27 Grow Light grows salad crops from seed, as well as keeping houseplants alive for longer. Thanks to its warm 4000 K white light and full spectrum, the E27 Grow Light will suit any room in the home, rather than purple alternatives available on the market.

- Boasting two timer options, 15 hours ON and 9 hours OFF, or permanently ON; this state of the art E27 lamp allows you to carry on with your busy lifestyle without worrying about your plants
- Due to its specifically developed LED chips, the E27 Grow Light will leave your houseplants looking greener, fuller and healthier for longer!
- Fits any standard E27 lighting fixture
- Uses warm white light to create a cosy atmosphere
- Available in 16 W or 25 W variants



03-155-020 E27 LED 4000 K Grow Light - 16 W

03-155-030 E27 LED 4000 K Grow Light - 25 W



Try Guard'n'Aid



PRO7

made by *Jiffy*



AVAILABLE
NOW

**ALL NEW & EXCLUSIVE
TO HYDROGARDEN**



ROOT!T[®]

Propagation made easy

propagateplants.com

BIOBIZZ®

WORLD WIDE ORGANICS

30
Years Anniversary



100% organic, 100% certified



hydrogarden.com



Follow us for the latest
HydroGarden news

Please note that the following brands are registered to HydroGarden Ltd:
EnviroGro by LUMii, GoGro, GoGro Style, LightHouse, PLANT!T, ROOT!T and ROOT!T Hobby are HydroGarden brands
HydroGarden Ltd., 2 Progress Way, Binley, Coventry, CV3 2NT, UK

All product images are for illustration purposes only and are subject to change.

V2.0 2022