



**Woodstock Chimes® UK**

*The World's Favourite Windchime™*

## 2022 Collection



*The original musically tuned windchime since 1979*



## Woodstock 2022

*Woodstock Chimes are Better Than Ever!*



2021 was a year of growth for all of us, and we look forward to exciting new possibilities in the year ahead. In September of 2021, we sold our beloved Woodstock Chimes to Sullivans, a leader in the home décor industry. You can expect our commitment to high quality in design and innovative sounds to continue—and to be better than ever!

We're happy to continue our partnership with White Pebble International as our exclusive distributor for Woodstock Chimes in the UK and Ireland.

As we embrace change and growth, we're excited to bring you along with us. As always, in conjunction with White Pebble we remain committed to providing you with top-of-the-line products and excellent customer service. Together we will be better than ever!

Thanks for listening.

*Garry*

Garry Kvistad - Founder

 **Woodstock Chimes® UK**

## Personalising Chimes



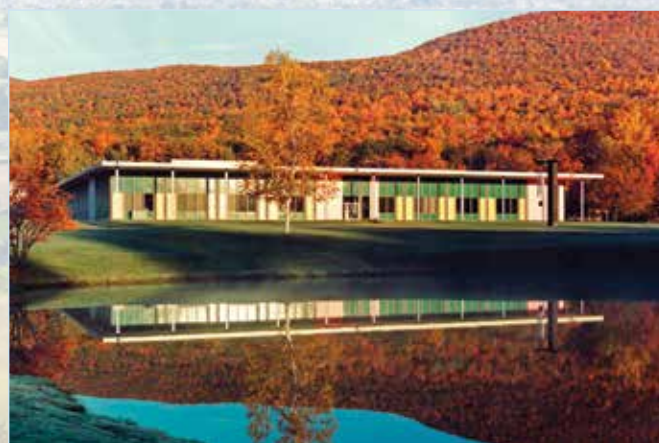
Our removable windcatcher logo indicates chimes that are designed to be easily customised. Including a personal message such as a wedding date, note of sympathy or birthday greeting makes the gift that much more special. Woodstock Chimes does not offer engraving services, but the removable windcatcher can be taken to a personalisation store, trophy shop, printer or jeweller to be engraved or silk-screened.



## Woodstock Chimes®

### The environment and responsible manufacturing:

Woodstock Chimes is committed to ensuring all products are made with attention to sustaining and protecting the environment. Recycled materials are used whenever possible and all packing materials are recyclable. All wood is sourced from managed forests. Anodising and electroplating processes have been almost entirely eliminated in favor of a state-of-the-art environmentally friendly painting method. All production is done in compliance with relevant local environmental laws and regulations. All products are made in modern factories with clean and safe working conditions. The highly skilled chime makers are paid fair wages and treated with respect and dignity. Woodstock Chimes is a global brand dedicated to continuous improvement both in protecting the environment and maintaining responsible manufacturing conditions.



*Home of Woodstock Chimes, Shokan, N.Y.*

## Warehoused and Fulfilled in the UK, Designed in New York

In the United Kingdom and Ireland, Woodstock Percussion products are distributed by White Pebble International. This allows us to offer our UK customers fast turnaround and delivery times.

Woodstock Percussion products are exclusively designed in New York State and manufactured in Bali, China, Taiwan and the U.S. Representatives visit our production facilities frequently to ensure our high standards are met. Our products are made in factories where the working conditions are excellent, the facilities are clean and organised and the employees are paid fair wages while being treated with dignity and respect. The majority of the wood used in our products is North American hardwood.



# Encore® Collection

In 2001 we introduced Encore Collection Chimes to share the top quality sound of musically tuned Woodstock Chimes® with more music lovers. Using a standard set of designs and tunings, we can offer this line of chimes at affordable prices. All Encore Chimes harmonise nicely with each other and act in concert with the wind to create random patterns of wonderful music.



## Encore® Packaging

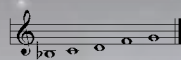
Each Encore Collection product comes in a colourful gift box with a Euro-slot design, suitable for our grid display or any pegged display. The box image is reminiscent of the Hudson Valley, global headquarters of Woodstock Chimes.



## CHIMES OF MERCURY™

Available in four colour combinations.

L 14" • 0.4 lb



### A. Bronze

Bubinga finish wood,  
5 bronze tubes

DCB14



0 28375 06301 7

### B. Silver

Bubinga finish wood,  
5 silver tubes

DCS14



0 28375 06311 6

### C. Verdigris

Cherry finish wood,  
5 verdigris tubes

DCV14



0 28375 16341 0



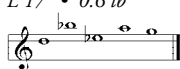
*Garry says*

**Perennial Favourites:** Our Encore® chimes come in a variety of styles, including bronze, silver, black, evergreen or verdigris tubes and bubinga, or cherry finish wood. Find the sizes and styles that work best for your customers.



## CHIMES OF MARS™

Available in six colour combinations.  
L 17" • 0.6 lb



### D. Bronze

Bubinga finish wood,  
5 bronze tubes  
DCB17



### F. Silver

Bubinga finish wood,  
5 silver tubes  
DCS17



### G. Black

Bubinga finish wood,  
5 satin black tubes  
DCK17



### E. Evergreen

Bubinga finish wood,  
5 satin green tubes  
DCE17



### H Verdigris

Cherry finish wood,  
5 verdigris tubes  
DCV17





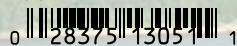
# Bells & Polaris



## A. Encore Copper Bells™

Bubinga finish wood,  
3 antiqued copper-plated steel bells  
L 36" • 0.8 lb

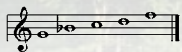
DCCB



## CHIMES OF POLARIS™

Available in three colour combinations.

L 22" • 0.8 lb



## B. Bronze

Bubinga finish wood,  
5 bronze tubes

DCB22



## C. Silver

Bubinga finish wood,  
5 silver tubes

DCS22



## D. Verdigris

Cherry finish wood,  
5 verdigris tubes

DCV22



E.

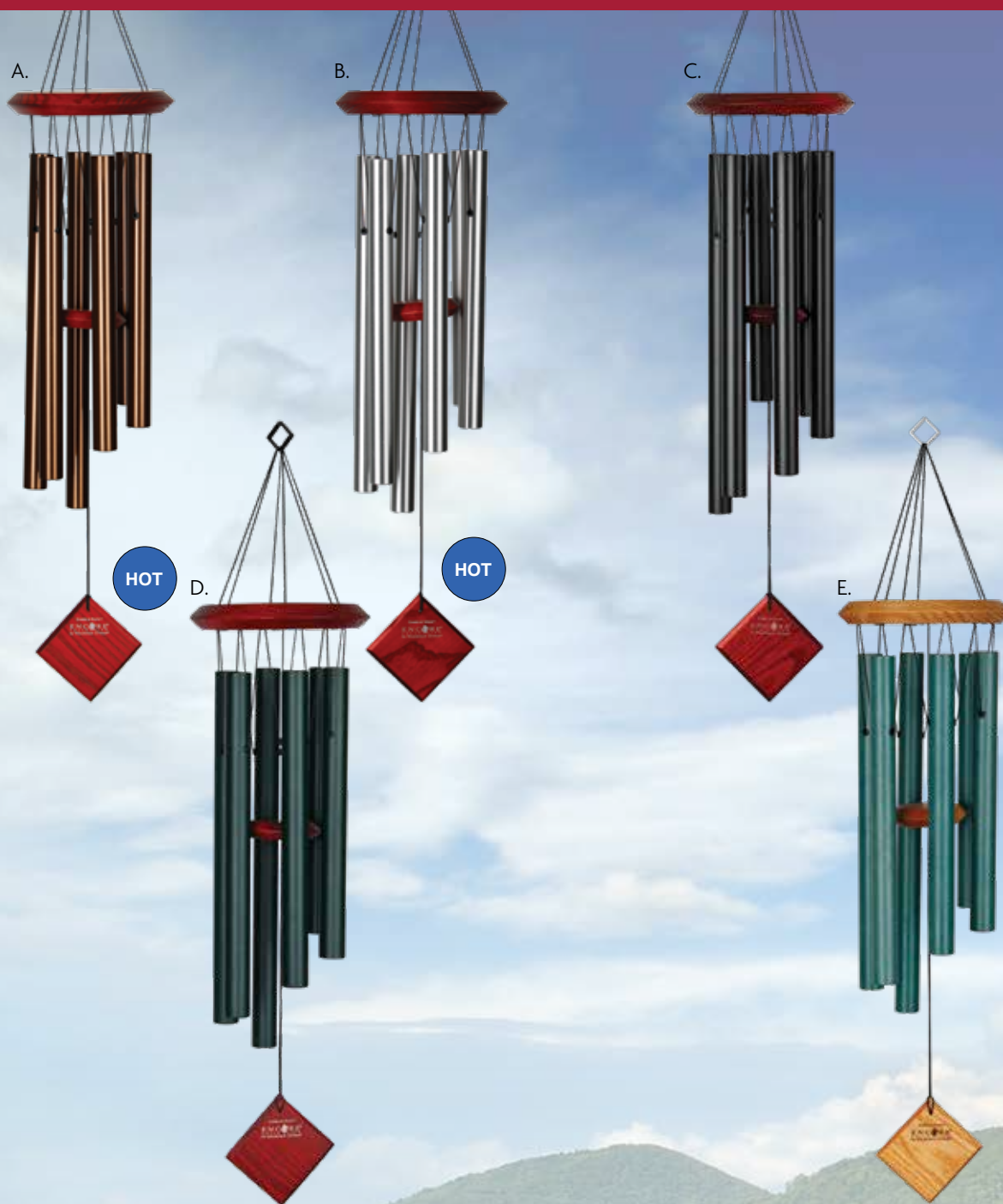


## E. Encore Garden Bells™

7 brass bells,  
GardenStone™ base  
H 20" • 3.5 lb

DCGB

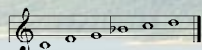




## CHIMES OF PLUTO™

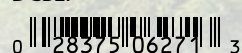
Available in five colour combinations.

L 27" • 1.8 lb



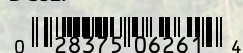
### A. Bronze

Bubinga finish wood,  
6 bronze tubes  
DCB27



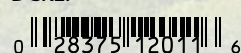
### B. Silver

Bubinga finish wood,  
6 silver tubes  
DCS27



### C. Black

Bubinga finish wood,  
6 satin black tubes  
DCK27



### D. Evergreen

Bubinga finish wood,  
6 satin green tubes  
DCE27



### E. Verdigris

Cherry finish wood,  
6 verdigris tubes  
DCV27







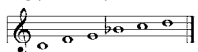
You can hear  
our chimes online at  
[woodstock-chimes.co.uk](http://woodstock-chimes.co.uk)



## CHIMES OF EARTH™

Available in five colour combinations.

L 37" • 2.9 lb



### A. Bronze

Bubinga finish wood,  
6 bronze tubes

DCB37



0 28375 0629 1 1

### B. Silver

Bubinga finish wood,  
6 silver tubes

DCS37



0 28375 0628 1 2

### C. Black

Bubinga finish wood,  
6 satin black tubes

DCK37



0 28375 1438 1 8

### D. Evergreen

Bubinga finish wood,  
6 satin green tubes

DCE37



0 28375 2737 1 3

### E. Verdigris

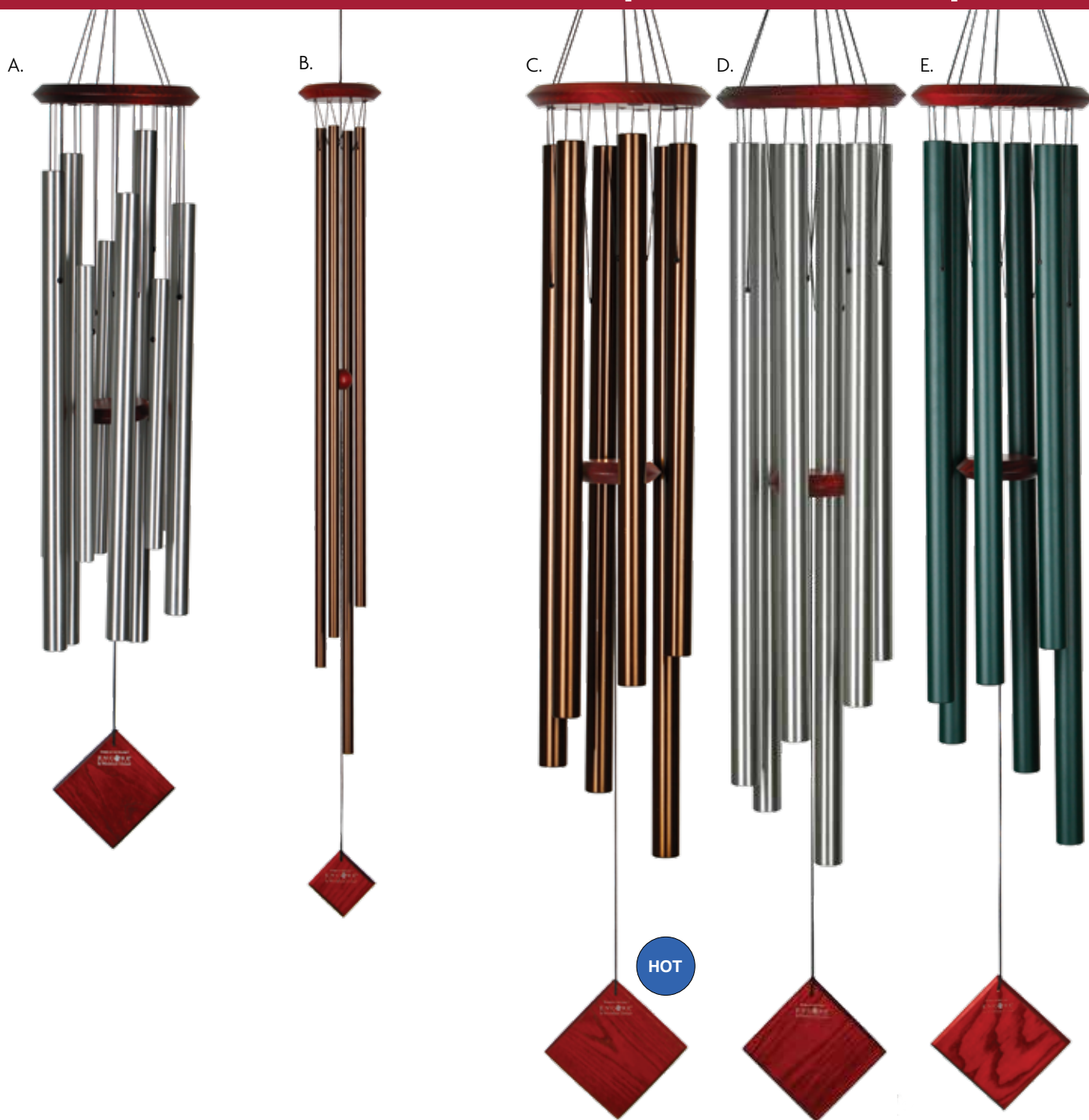
Cherry finish wood,  
6 verdigris tubes

DCV37



0 28375 1637 1 7

# Eclipse, Saturn & Neptune

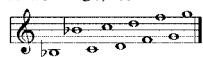


## CHIMES OF THE ECLIPSE™

Available in two colour combinations.

Bubinga finish wood

L 40" • 3.7 lb



### A. Silver

10 silver tubes

DCS40



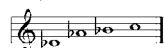
### B. Chimes of Saturn™

Bronze

Bubinga finish wood,

4 bronze tubes

L 47" • 1.4 lb



DCB47

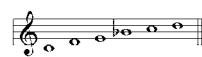


## CHIMES OF NEPTUNE™

Available in three colour combinations.

Bubinga finish wood

L 54" • 6.3 lb



### C. Bronze

6 bronze tubes

DCB54



### D. Silver

6 silver tubes

DCS54



### E. Evergreen

6 satin green tubes

DCE54





# Signature Collection™

Containing the wildly popular classic-style Woodstock Chimes®, others with contemporary flair, products that contribute to holistic living, and more, this collection appeals to a wide range of customers. This is where you'll find our "WOW" products like Heroic Windbells, Windsinger Chimes and Magical Mystery Chimes, all distinctive products that draw more customers to your display.

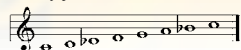


## Inspirational & Memorial Chimes

Beautiful, elegant and spiritually uplifting, these chimes offer a way to celebrate one's faith, serve as a reminder to take time out for meditation or provide comfort to those who have lost a loved one. While all Woodstock Chimes® make lovely gifts, the products found on this spread are especially suitable for inspirational or sympathy gifts.

### GREGORIAN CHIMES®

Tuned to a meditative medieval scale.  
Cherry finish ash wood, 8 silver tubes



#### A. Tenor

L 39" • 3.8 lb

GTS



#### B. Alto, Silver

L 27" • 2 lb

GAS



#### C. Soprano

L 17" • 0.7 lb

GSS

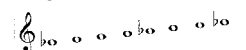


#### D. Little Gregorian Chime™

Tuned to a meditative medieval scale.

Cherry finish ash wood,  
8 silver tubes

L 13" • 0.4 lb



GLS





## Amazing Grace

Perennial best sellers, our immensely popular Amazing Grace Chimes are available in sizes from 16" to 40". Be sure your customers have found them—include them on all your orders so they can hear "...how sweet the sound...."

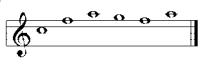


You can hear  
our chimes online at  
[woodstock-chimes.co.uk](http://woodstock-chimes.co.uk)



## AMAZING GRACE CHIME™

Tuned to the opening notes of *Amazing Grace*.



**E. Large, Silver**  
Cherry finish ash wood,  
6 silver tubes  
L 40" • 3.2 lb  
AGLS



**F. Medium, Silver**  
Cherry finish ash wood,  
6 silver tubes  
L 24" • 1.6 lb  
AGMS



**G. Medium, Bronze**  
Teak finish ash wood,  
6 bronze tubes  
L 24" • 1.6 lb  
AGMBR



**H. Small, Silver**  
Cherry finish ash wood,  
6 silver tubes  
L 16" • 0.7 lb  
AGSS



**I. Small, Bronze**  
Teak finish ash wood,  
6 bronze tubes  
L 16" • 0.7 lb  
AGSBR





# World Music



## World Music

Some of our most beloved chimes are tuned to scales from different countries and cultures around the world. Your customers can travel the globe without ever leaving the back yard with Woodstock Chimes®.



### A. Chimes of Tuscany™

Tuned to the notes of a Verdi aria from *La Forza del Destino*. Burgundy wash finish ash wood, 9 satin burgundy tubes, wood-burned grapes image L 27" • 2.1 lb

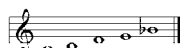


CTS



### C. Chimes of Bali®

Tuned to the traditional scale of a Balinese shadow puppet play. Cherry finish ash wood, 5 silver tubes L 25" • 1.3 lb



BWS



### E. Chimes of Olympos®

Tuned to a beautiful ancient Greek scale from the 7<sup>th</sup> century BC. The original Woodstock Chime! Cherry finish ash wood, 6 silver tubes L 36" • 3.2 lb



OWS



### B. Woodstock Happy Birthday Chime™

Tuned to notes from *Happy Birthday*. Teak finish ash wood, 6 silver tubes L 22" • 1 lb



BDAY



### D. Calypso Island

Tuned to notes from the well-loved calypso song *Yellow Bird*. L 24" • 1.6 lb



MMCI



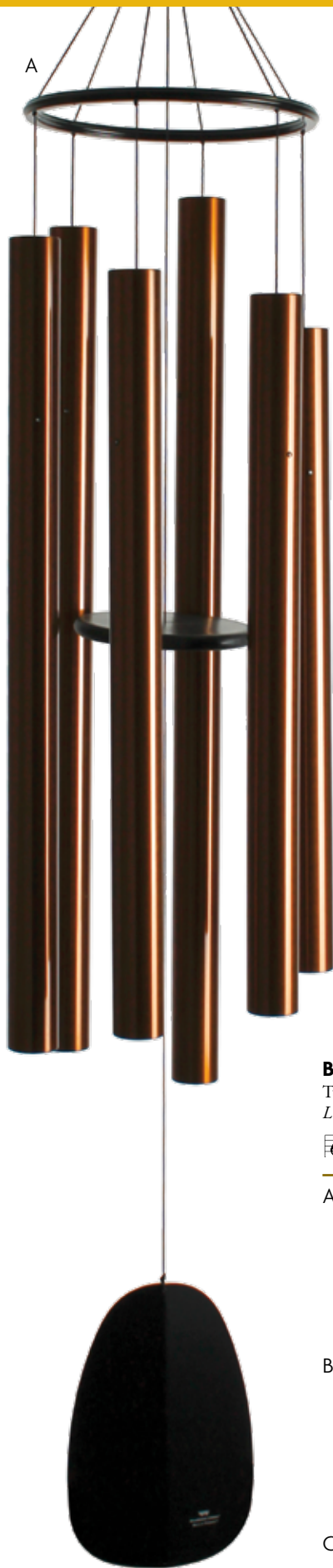
### F. Pachelbel Canon Chime™ - Silver

Tuned to notes from Johann Pachelbel's celebrated *Canon in D*, with a small chime within the main chime for fuller sound. Black finish ash wood, 6 silver tubes, 4 black solid rods L 32" • 1.9 lb



PCC



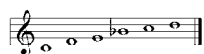


## Décor Designs

Year after year, we've proven that Woodstock Chimes® leads the industry in the most original and attractive designs of quality chimes and bells. Our Décor Designs chimes represent some of our most innovative creations.

### BELLS OF PARADISE™ - 88"

Tuned to an ancient Chinese pentatonic scale.  
L 88" • 21.7 lb



#### A. Bronze

Black aluminium ring  
and windcatcher,  
6 bronze tubes

BPBR88



#### B. Black

Black aluminium ring  
and windcatcher,  
6 satin black tubes

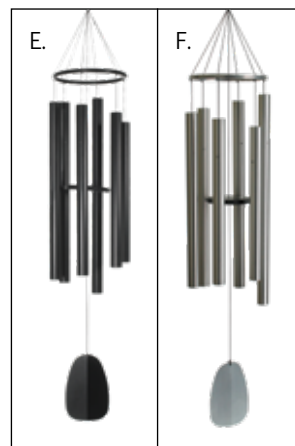
BPK88



#### C. Silver

Silver aluminium ring  
and windcatcher,  
6 silver tubes

BPS88



### BELLS OF PARADISE - 68"

Tuned to an ancient Chinese pentatonic scale.  
L 68" • 10.9 lb



#### D. Bronze

Black aluminium ring  
and windcatcher,  
6 bronze tubes

BPBR68



#### E. Black

Black aluminium ring  
and windcatcher,  
6 satin black tubes

BPK68



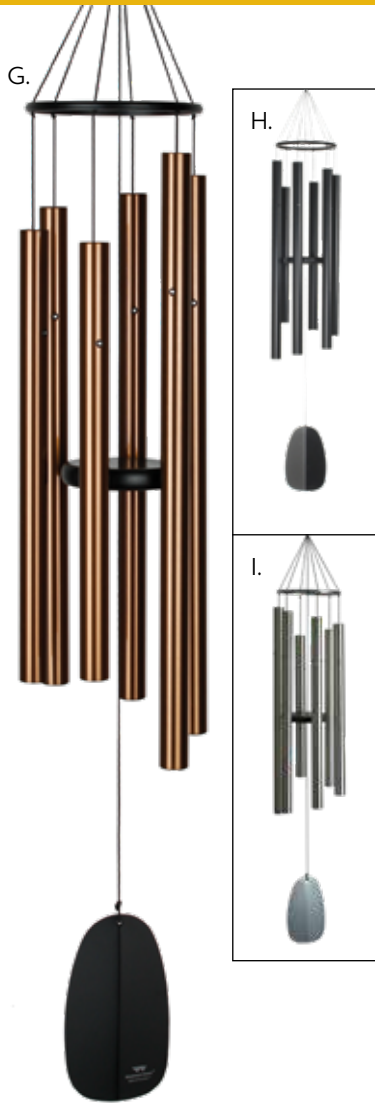
#### F. Silver

Silver aluminium ring  
and windcatcher,  
6 silver tubes

BPS68

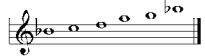






## BELLS OF PARADISE™ - 54"

Tuned to an ancient Chinese pentatonic scale.  
L 54" • 4.7 lb



### G. Bronze

Black aluminium ring  
and windcatcher,  
6 bronze tubes

BPLR54



### H. Black

Black aluminium ring  
and windcatcher,  
6 satin black tubes

BPK54



### I. Silver

Silver aluminium ring  
and windcatcher,  
6 silver tubes

BPS54



## BELLS OF PARADISE - 44"

Tuned to an ancient Chinese pentatonic scale.  
L 44" • 2.9 lb



### J. Bronze

Black aluminium ring  
and windcatcher,  
6 bronze tubes

BPLBR



### K. Black

Black aluminium ring  
and windcatcher,  
6 satin black tubes

BPLK



### L. Silver

Silver aluminium ring  
and windcatcher,  
6 silver tubes

BPLS



### M. Rainforest Green

Silver aluminium ring  
and windcatcher,  
6 satin green tubes

BPLRG



## BELLS OF PARADISE - 32"

Tuned to an ancient Chinese pentatonic scale.  
L 32" • 1.8 lb



### N. Bronze

Black aluminium ring  
and windcatcher,  
6 bronze tubes

BPMBR



### O. Black

Black aluminium ring  
and windcatcher,  
6 satin black tubes

BPMK



### P. Silver

Silver aluminium ring  
and windcatcher,  
6 silver tubes

BPMS



### Q. Rainforest Green

Silver aluminium ring  
and windcatcher,  
6 satin green tubes

BPMRG





## Our Premier Line

### Specially Designed for Long-Lasting Musical Sustain

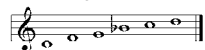
When two or more musical sounds interact, the listener hears other notes that mathematically relate to those notes. The more in tune the original notes are, the more harmonic and pleasing the combination tones.

#### WOODSTOCK WINDSINGER CHIME™ - BLACK

Tuned to an ancient Chinese pentatonic scale.  
Black aluminium ring and windcatcher, 6 black tubes

##### A. Chimes of King David™

L 88" • 43.4 lb

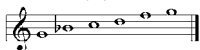


WWKB



##### B. Chimes of Apollo™

L 68" • 19.7 lb

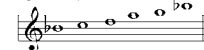


WWAB



##### C. Chimes of Orpheus™

L 54" • 7.4 lb

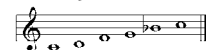


WWOB



##### D. Chimes of Athena™

L 44" • 5 lb



WWAA







## Why Windsinger Chimes Ring Supreme

Our Windsinger Chime line includes our largest chimes. These massive chimes make spectacular music, and here are some of the reasons why:

- Tuned to perfection
- Extra thick tubes
- Frictionless suspension
- Precise placement of parts

## WOODSTOCK WINDSINGER CHIME™ - SILVER

Tuned to an ancient Chinese pentatonic scale.

Silver aluminium ring and windcatcher, 6 brushed silver tubes

### E. Chimes of Athena™

L 44" • 5 lb



WWSA



### F. Chimes of Orpheus™

L 54" • 7.4 lb

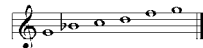


WWOS



### G. Chimes of Apollo™

L 68" • 19.7 lb

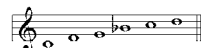


WWAS



### H. Chimes of King David™

L 88" • 43.4 lb



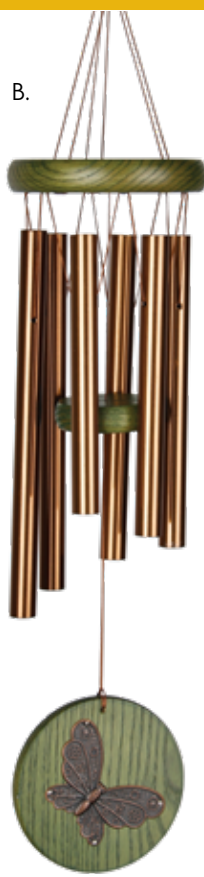
WWKD





**A. Emperor Gong™**  
**Medium, Natural**  
*Cherry finish ash wood,  
 hand-hammered bronze gong*  
 Gong dia. 10"  
 L 34" • 2.1 lb

EGC  
 0 28375 07491 4



**Woodstock Habitat Chimes™ - Green**  
 Tuned to an intriguing pentatonic scale.  
*Green wash finish ash wood, 6 bronze tubes,  
 antiqued copper-plated steel accent*  
 L 17" • 0.7 lb



**B. Butterfly**  
 HCGB

0 28375 23991 7



**C. Dragonfly**  
 HCGD

0 28375 23981 8

## Wind Fantasy Chimes™

Tuned to a traditional Balinese scale.  
*5 silver tubes, nickel-plated brass ornament*  
 L 24" • 1.1 lb

**D. Dog**

*Bubinga finish ash wood*  
 WFCD

0 28375 30061 7

**E. Cat**

*Bubinga finish ash wood*  
 WFCC

0 28375 31231 3

**F. Tree of Life**

*Green wash finish ash wood*  
 WFCTL

0 28375 31221 4



NEW

**D.**



NEW

**E.**



**F.**





## G. Amazing Grace Garden Chime

Tuned to a pentatonic scale.

Cherry finish pine wood, 5 silver tubes, silk-screened windcatcher  
L 27" • 0.8 lb



GCAG



## H. Moonlight Waves™

Black finish ash wood,  
34 antiqued copper finish steel disks  
L 34" • 1.1 lb

MW



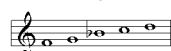
## I. Woodstock Habitats Butterfly Chime

Verdigris finish cast aluminium  
L 21" • 0.5 lb  
CBC



## J. Woodstock Garden Chime - Butterfly

Tuned to a pentatonic scale.  
Teak finish ash wood,  
5 satin blue silk-screened tubes  
L 24" • 1.3 lb



GCB

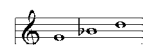


I.



## K. Piccolo Chime™

Cherry finish ash wood, 3 silver tubes  
Sold as a 12-pak POP.  
Chime: L 6" • 0.1 lb (unboxed wt.)  
POP: H 11" • W 7" • D 5" • 1.2 lb



PCS





# Décor Designs



## SPARKLE CHIME™

4 silver solid rods, crystal accents  
L 10" • 0.2 lb

## Sparkle Chimes Package

Includes twelve of each colour.  
Sixty chimes total.

Comes with FREE display.

SCPKG



### A. Blue

Blue wash finish ash wood  
SCB



### B. Chakra

White wash finish ash wood  
SCC



### C. Green

Green wash finish ash wood  
SCG



### D. Pink

Pink wash finish ash wood  
SCP



### E. Purple

Purple wash finish ash wood  
SCU



### F.



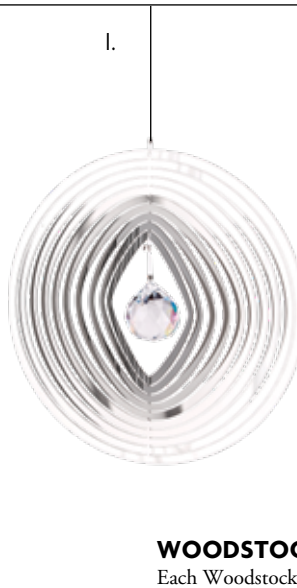
### G.



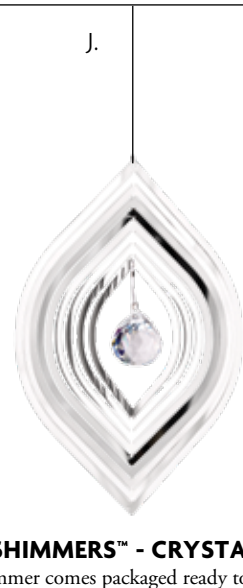
### H.



### I.



### J.



## WOODSTOCK CHIME FANTASY™

4 silver solid rods, nickel-plated brass ornament, crystal accents  
L 10" • 0.2 lb

## WOODSTOCK SHIMMERS™ - CRYSTAL

Each Woodstock Shimmer comes packaged ready to give in an organza gift bag.

Polished stainless steel, glass crystal accent, hanging line, alligator clip  
L 5" (25" w/ hanging line) • 0.1 lb

### F. Tree of Life

Green wash finish ash wood  
WCFTL



### G. Mermaid

White wash finish ash wood  
WCFM



### H. Dolphin

Teal wash finish ash wood  
WCFD



### H. Crystal Orb

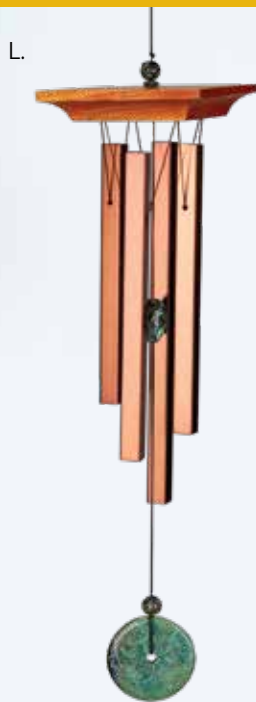
SHCO



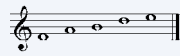
### I. Crystal Marquise

SHCM





**K. My Butterfly Chime™**  
Tuned to a pentatonic scale.  
Black wash finish pine wood,  
5 bronze tubes, steel windcatcher  
L 21" • 0.8 lb

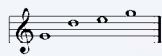


BFC



**L. Woodstock Turquoise Chime™**  
**Small**

Tuned using the "golden ratio".  
Cherry finish ash wood, 4 square bronze tubes,  
faux turquoise accents  
L 21" • 0.8 lb



WTBR



**ALOHA SOLAR CHIME™**

Tuned to the opening notes of *Amazing Grace*.  
A solar-powered light illuminates as the sun sets.  
Solar-powered light, bamboo sleeve and windcatcher,  
ash wood top and clapper, 4 silver tubes  
L 28" • 1.7 lb



**M.. Natural**

ACSN



**N. Purple Passion**

ACSP



*Tops of Woodstock Flourish Chimes*

**WOODSTOCK FLOURISH CHIME™**

4 silver solid rods, polished stainless steel filigree windcatcher  
and accent  
L 18" • 0.3 lb

**O. Tree of Life**

FLTL



**P. Hummingbird**

FLHU



**Q. Butterfly**

FLBU



**R. Dragonfly**

FLDR



**S. Heart**

FLHE



**T. Sun**

FLSU



**Flourish Chimes  
Package**

Includes six of each style.  
Thirty-six chimes total.  
**Comes with FREE display.**  
FLPKG



**Flourish Chime  
Assortment**

Includes two of each style.  
Twelve chimes total.

FLAST



# Eastern Energies

A.



## A. Woodstock Healing Chime™ - Silver

Precisely tuned to harmonic overtones, making it sound like there are more tones than tubes!  
Black and cherry finish ash wood, 9 silver tubes, silk-screened windcatcher  
L 34" • W 15" • 2.5 lb



HC



## C. Woodstock Crystal Meditation Chime™

Black finish ash wood, 6 solid rods, crystal accents  
L 16" • 0.5 lb

CCMC



B.



HOT



## B.. Woodstock Chakra Chime™

**Seven Stones, Large, Black**  
Tuned to the frequencies of the chakras.  
Black finish pine wood, 7 silver tubes, wood and multi-stone clapper  
L 24" • 1.5 lb



CC7L



C.



D.



HOT

## D. Woodstock Tree of Life Chime™

Black finish ash wood, 6 silver solid rods, nickel-plated brass ornament, crystal accents  
L 19" • 0.6 lb  
WFTE







## Precious Stones Package

Includes six of each colour.  
36 chimes total.  
Comes with **FREE** display.  
PSP



## Precious Stones Assortment

Includes one of each colour.  
Six chimes total.

PSC7



### PRECIOUS STONES CHIME™

Black finish ash wood, 4 silver solid rods, stone accents  
L 12" • 0.2 lb

#### E. Turquoise

PST



#### H. Lapis

PSL



#### F. Amethyst

PSAM



#### I. Jade

PSJ



#### G.. Rose Quartz

PSR



#### J. Crystal

Glass crystal windcatcher

PSCR



You can hear  
our chimes online at  
[woodstock-chimes.co.uk](http://woodstock-chimes.co.uk)

M.



K.



HOT

L..



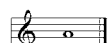
### WOODSTOCK ZENERGY CHIME™

Designed for easy wall mounting.  
Cherry finish ash wood, mallet

#### K. Solo, Silver

1 silver solid rod

H 1.5" • W 7" • D 1.7" • 0.5 lb



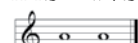
ZENERGY



#### L. Meditation

2 silver solid rods

H 1.5" • W 7.5" • D 2.5" • 0.8 lb



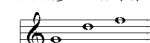
ZENERGY2



#### M. Trio

3 silver solid rods

H 1.5" • W 7.7" • D 3" • 0.9 lb



ZENERGY3



# Eastern Energies



You can hear  
our chimes online at  
[woodstock-chimes.co.uk](http://woodstock-chimes.co.uk)



## Chakra Chimes Package

Includes three of each style.  
Twenty-seven chimes total.

**Comes with FREE display.**

CCP

0 28375 19951 8



## WOODSTOCK CHAKRA CHIME™

L 17" • 0.5 lb

### A. Seven Stones, Silver

Black finish ash wood,  
6 silver solid rods, stone accents,  
aluminium windcatcher

CC7

0 28375 20191 4

### B. Seven Stones, Bronze

Teak finish ash wood,  
6 bronze solid rods,  
stone accents,  
aluminium windcatcher

CC7BR

0 28375 31201 6

### C. Amethyst

The Crown Chakra.  
Black finish ash wood,  
6 silver solid rods, stone accents,  
stone windcatcher

CCAM

0 28375 19681 4

### D. Lapis

The Brow Chakra (third eye).  
Black finish ash wood,  
6 silver solid rods, stone accents,  
stone windcatcher

CCL

0 28375 20801 2

### E. Turquoise

The Throat Chakra.  
Black finish ash wood,  
6 silver solid rods, stone accents,  
stone windcatcher

CCT

0 28375 19741 5

### F. Aventurine

The Heart Chakra.  
Black finish ash wood,  
6 silver solid rods, ceramic and  
stone accents, stone windcatcher

CCAV

0 28375 19691 3

### G. Citrine

The Solar Plexus Chakra.  
Black finish ash wood,  
6 silver solid rods, stone accents,  
glass windcatcher

CCCI

0 28375 20791 6

### H. Amber

The Sacral Chakra.  
Black finish ash wood,  
6 silver solid rods, wood and  
stone accents, glass windcatcher

CCAB

0 28375 20781 7

### I. Red Coral

The Base Chakra.  
Black finish ash wood,  
6 silver solid rods, stone accents,  
stone windcatcher

CCR

0 28375 19731 6





## L. Woodstock Peace Chime™

Tuned to notes of the hymn  
Let There Be Peace On Earth.  
Teak finish ash wood, 6 bronze tubes,  
flamed stainless steel windcatcher  
L 16" • 0.7 l



Detail of Mindfulness  
Chime windcatchers

## Eastern Energies

Sound is used by followers of many Eastern religions and philosophies and the Metaphysical Movement to enhance meditation and relaxation. Our Eastern Energy chimes are ideal for use in meditation, sound therapy or to simply enhance one's soundscape.

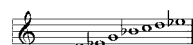
## WOODSTOCK MINDFULNESS CHIME™

Teak finish ash wood, silk-screened windcatcher

NEW

### J. Large

Tuned to notes from  
an African scale.  
9 silver tubes  
L 44" • 3.9 lb

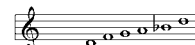


WMCL



### K. Medium

Tuned to notes from  
a New Age scale.  
8 silver tubes  
L 28" • 1.9 lb



WMCM



# Bells



## Woodstock Bells

Our bells come in many designs that can be displayed with contemporary, Asian or country-themed products, or in an area of your store reserved for men's gifts. They're more than instruments of the wind, they're musical works of art!

### WOODSTOCK TEMPLE BELLS®

#### A. Trio, Brass

3 polished brass bells  
and windcatcher  
L 24" • 0.5 lb

TB3



0 28375 03521 2

#### B. Trio, Copper

3 antiqued copper-plated  
steel bells and windcatcher  
L 24" • 0.5 lb

TB3C



0 28375 13111 2

#### C. Quintet, Brass

5 polished brass bells  
and windcatcher  
L 32" • 0.8 lb

TB5



0 28375 03651 6

#### D. Quintet, Copper

5 antiqued copper-plated  
steel bells and windcatcher  
L 32" • 0.8 lb

TB5C



0 28375 13121 1

#### E. Heroic Windbell™ - Large

##### Antique Copper

Antiqued copper steel bell,  
aluminium windcatcher,  
black finish ash wood clapper  
L 40" • Dia. 6" • 11.8 lb

HWLC



0 28375 21661 1

#### F. Heroic Windbell - Medium

##### Antique Copper

Antiqued copper steel bell,  
aluminium windcatcher,  
black finish ash wood clapper  
L 24" • Dia. 4" • 3.8 lb

HWMC



0 28375 21681 9





## Chime Tree Display

Holds 36 chimes.

Black powder-coated steel,  
includes sign and 36 attached hooks  
H 89" • Dia. 40" • 22.8 lb

DISCT2



## Tabletop Display

Holds 12 small chimes.

Includes POP Header.

Black powder-coated steel  
H 26" • Dia. 14" • 3.5 lb  
DISPC3



## Fiddlehead Counter Display

Silver

Holds 15 small chimes.

Stems are adjustable.

Chrome-plated steel  
H 20" • Dia. 13" • 1.6 lb

CDS



## FIDDLEHEAD TWO-TIER HANGING DISPLAY

Holds 10 small chimes.

Includes POP hangtags.

L 13" • Dia. 9" • 0.6 lb

Silver

Chrome-plated steel

CDHA



Black

Black painted steel

CDHAB



## Small Arbour Display

Holds 25-30 chimes, bells and gongs.

Antiqued bronze powder-coated steel,  
includes sign, 24 S-Hooks, 1 pkg. HB6,  
1 pkg. HB12, 4 Double Loop Hooks,  
2 shelves, stabilisers, 4 rubber feet  
H 89" • W 36" • D 17" • 30 lb  
(W 23" without hooks)

WACDS



*It's on wheels!*

## Mobile Trellis Display

Holds 25-35 chimes, bells and gongs.

Antiqued brass powder-coated steel,  
includes sign, 24 S-Hooks, 1 pkg. HB6,  
1 pkg. HB12, 2 shelves, stabilisers,  
4 wheels (2 lockable)  
H 76" • W 39" • D 34" • 33 lb  
(D 22" without hooks)

MTD



## Extra Large Arbour Display

Holds 30-40 chimes, bells and gongs.

Antiqued bronze powder-coated steel,  
includes sign, 24 S-Hooks, 1 pkg. HB6,  
1 pkg. HB12, 4 Double Loop Hooks,  
2 shelves, stabilisers, 4 rubber feet  
H 85" • W 48" • D 24" • 45 lb  
(W 38" without hooks)

WACDXL



# CLEARANCE CHIMES - 60% OFF!



## Garden Chimes

Tuned to a pentatonic scale.

Cherry finish pine wood, 5 silver tubes, silk-screened windcatcher  
L 27" • 0.8 lb

A. **The Lord's Prayer**  
GCLP



B. **Serenity Prayer**  
GCSP



G.



## WOODSTOCK SEASHORE CHIME™

Tuned to a traditional Balinese scale.

5 silver tubes



## C. Sand Dollar

White wash finish ash wood,  
hand-painted resin windcatcher

L 24" • 1.4 lb

SSA



## D. Scallop

Blue wash finish ash wood,  
cast aluminium windcatcher

L 15" • 0.6 lb

SSS



## E. Sea Star

White wash finish ash wood,  
hand-painted resin windcatcher

L 14" • 0.6 lb

SST



## F. Woodstock Seashore Spiral™ - Scallop

Light blue wash finish pine wood,  
8 cast aluminium accents

L 18" • 0.8 lb

SSSC



## G. Woodstock Habitats - Nutty Squirrel Windbell

Green wash finish ash wood, 18 bronze tubes

L 31" • 1 lb

CSQ



**H. Für Elise Piano Chime**

Two-sided chime commemorates one of Beethoven's most popular compositions.

L 12" • 0.8 lb

FEP



**I. Sea Glass Chime - Havana**

Wood top, 13 red, yellow, green and blue frosted glass "leaves"

L 18" • 0.4 lb (unboxed wt.)

SGH



**J. Sea Glass Chime -**

**Autumn Leaves**

9 red, yellow and orange frosted glass "leaves"

L 23" • W 9" • 0.6 lb (unboxed wt.)

SGAL



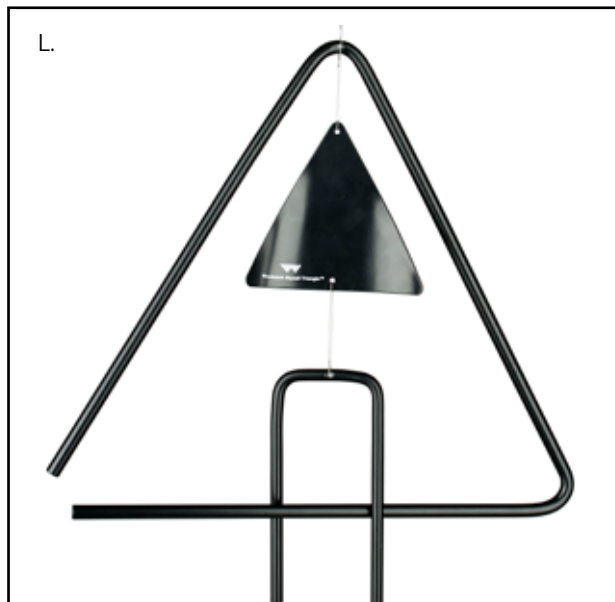
**K. West Side Story Chime**

Tuned to the opening notes of "Somewhere" from West Side Story.

Cherry finish ash wood, 5 silver tubes, silk-screened windcatcher

L 24" • 1.3 lb

WEST



**L. Woodstock Skysail Triangle**

Black finish aluminum

L 18" • W 13" • 1 lb

WST





White Pebble International Ltd  
Unit 2  
Plot 11 Terminus Road  
Chichester  
PO19 8TX  
UK

Tel: +44 (0) 1243 780501  
Fax: +44 (0) 1243 839332  
Email: [orders@whitepebbleint.com](mailto:orders@whitepebbleint.com)  
Web: [woodstock-chimes.co.uk](http://woodstock-chimes.co.uk)

THIS CATALOGUE AND ALL DESIGNS ARE ©2022 WPI



**Woodstock Chimes® UK**

Chimes are the  
*heart*  
of our business



Woodstock Chimes 2022 Catalogue

*The World's Favourite Windchime™*