

A photograph of a modern outdoor furniture set on a patio. The set includes a three-seater sofa, a two-seater sofa, and two ottomans, all with dark grey cushions and light-colored wicker frames. A low coffee table with a glass top and wicker frame sits in the center, holding a small vase of blue hydrangeas. A large green plant in a woven basket is on the right. The background shows a glass door leading into a house.

innovators

— international —

Est. 1988

LUXURY COLLECTION
2023



INTRODUCING

2023 LUXURY COLLECTION

It is with great pleasure that we present our 2023 Luxury Collection.

This is a wide range of inspiring and stylish outdoor furniture, designed to be as desirable as it is functional. An affordable range for every need.

Throughout the collection we have widened the range of possibilities. We are enthusiastic to present new sets, a large choice in table tops and the new Comforma cushion fabric.

As we are well known for our All-weather cushions, the Comforma fabric cushions are a great addition. These cushions have a very soft touch and have a luxurious finish.

The luxury collection offers the best of leisure furniture, manufactured from high-quality materials and assembled with the greatest care.

LUXURY RANGES



SARASOTA RANGE

P. 4



CANDOSA RANGE

P. 56

innovators
— international —

Innovators International Ltd. is always striving to further improve the design & functionality of furniture collections. We produce many fresh concepts year after year, whilst keeping our core values of luxury & longevity as a focalpoint.

Innovators offers stylish & space saving twists on classic garden furniture, ensuring that your garden always looks its best whether you are entertaining or simply relaxing. Innovators International is proud to be an accredited member of a number of trade organisations, ensuring that all our factories meet UK/EU ethical and environmental standards.

Innovators is certified LOFA Assured.



Our products are created with elegance, comfort & functionality in mind by professionals with more than 30 years experience in the furniture, gardening & design industries.



Our brand offers design led products that constantly bring innovation to the marketplace. In 2020 our Bellevue Set won the Best New Product award at the Glee Spring Fair.



SARASOTA RANGE



The Sarasota Range has been updated and developed in conjunction with our customers requirements.

This range was created in response to demand for a mid-price range of quality rattan furniture which was affordable to all.

We have combined some of our best selling rattan items to create this exclusive selection.

The range is offered in two attractive and on-trend colours and features aluminium frames with double half round rattan and shower proof spun polyester cushions.

SARASOTA RANGE

- Suitable for All Weather
- Fully Assembled Chairs
- UKFR 220g SpunPoly Cushion
- 5mm durable tempered safety glass top
- Aluminium Frame, 8x2mm Double Half Rattan

SARASOTA COLLECTION

P.6	BISTRO SETS	P.36	ACCESSORIES
P.12	DINING SETS	P.38	DELUXE SETS
P.20	MODULAR SETS	P.46	NAPLES SETS
P.28	LOUNGE SET	P.54	COVERS
P.32	SUNLOUNGERS		

HIGHLIGHTS

						
ALL WEATHER	BREATHABLE	WATER RESISTANT	EASY CARE	CHAIR FULLY ASSEMBLED	SUPERIOR RATTAN WAVE	ALUMINIUM

COLOUR OPTIONS

RATTAN



GREY



NATURAL

CUSHIONS



GREY



CAPPUCCINO

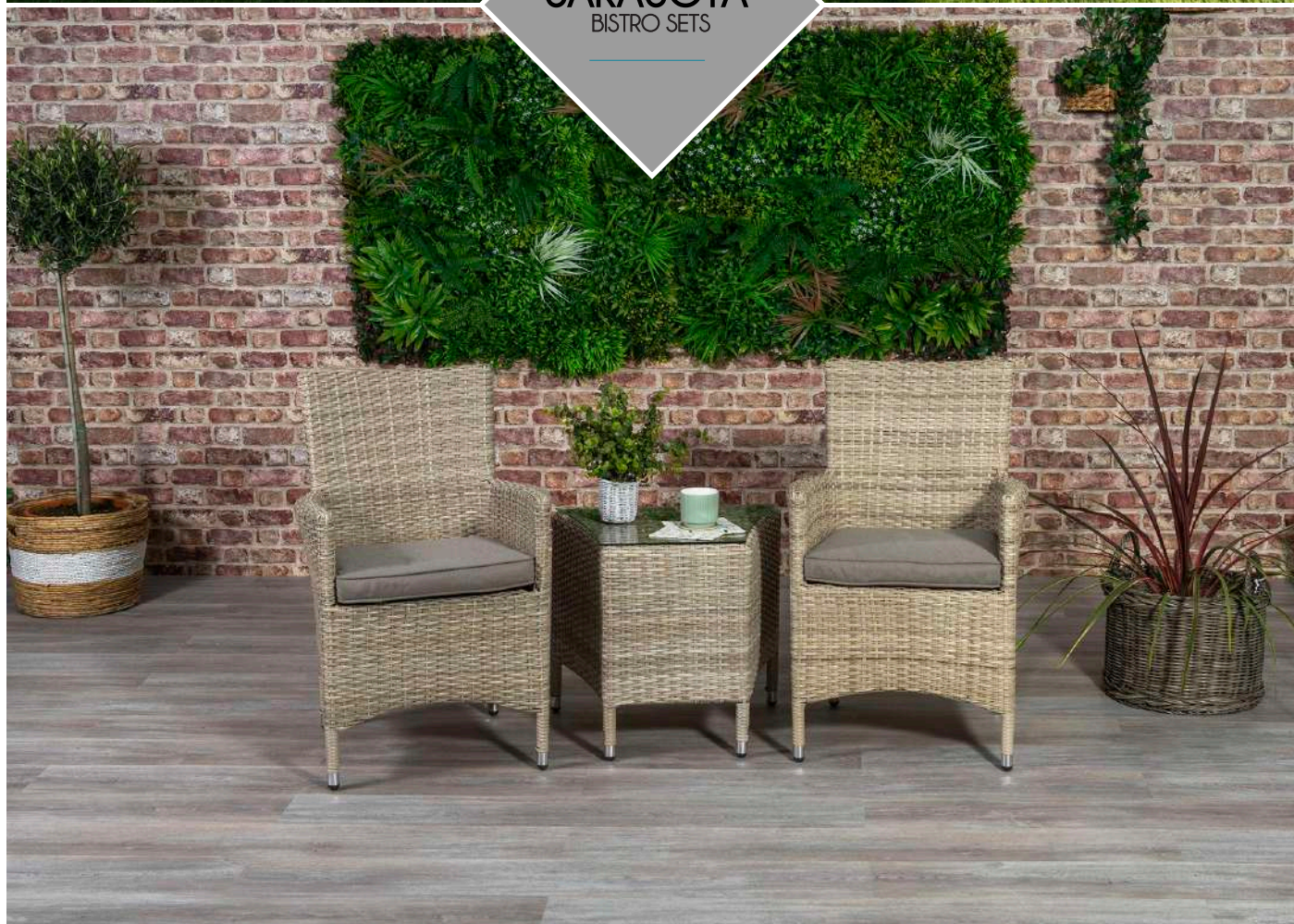
TABLE TOPS



CLEAR GLASS



SARASOTA
BISTRO SETS



Whether it's a catch up with a good friend or a romantic moment for two, Sarasota bistro sets are the ideal addition to any garden.

Compact enough to fit into all kinds of spaces, this rattan furniture looks wonderful on balconies, patios and decking as well as in conservatories and orangeries.

A bistro set gives you a comfy setting of 2 armchairs and a small table perfect for drinks and nibbles. Presented in either grey rattan weave with charcoal cushions or natural rattan weave with cappuccino cushions with a glass topped side table.

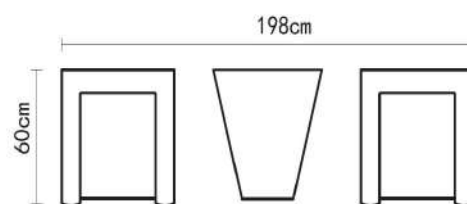
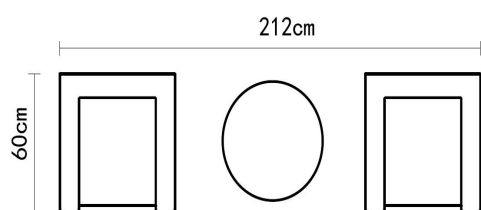
Both sets come in an elegant double half hand woven rattan, with fabric seat cushions. The weave is UV resistant and is woven onto a sturdy, rust proof aluminium frame, meaning it can be left outside all year.

The cushions are made from water resistant and easy care fabric for accidental spillages.

FEATURES

- Double half rattan, hand woven.
- Aluminium frame.
- 2 x armchairs
- 1 x bistro table with tempered safety glass top

FLOORPLAN



ELEMENTS

2x ARMCHAIR

W60 x D58.5 x H90cm



ROUND TABLE

Dia 75 x H75cm



2x ARMCHAIR

W60 x D58.5 x H90cm



SIDE TABLE

W60 x D42 x H53cm



COLOUR OPTIONS

RATTAN



GREY



NATURAL

CUSHIONS



GREY



CAPPUCCINO

TABLE TOPS



CLEAR GLASS



SARASOTA
RECLINING SETS



Find your ultimate relaxation space with the Sarasota reclining bistro set. This 2-seater rattan set includes beautifully curved armchairs that can be reclined so you can find the perfect position to relax.

Presented in either grey rattan weave with charcoal cushions or natural rattan weave with cappuccino cushions with a glass topped side table.

This set comes in an elegant double half hand weaved rattan, with fabric cushions to the back and seat. The weave is UV resistant and is woven onto a sturdy, rust proof aluminium frame, meaning it can be left outside all year. The cushions are made from water resistant and easy care fabric for accidental spillages.

The set comes with a matching rattan glass topped side table, which can be placed between the chairs so you can enjoy a drink and snack with a friend while relaxing in the sun.

FEATURES

- Double half rattan, hand weaved.
- Aluminium frame.
- 2 x reclining armchairs.
- 2 x footrests.
- 1 x side table with tempered safety glass top.
- Reclining chair back release function.

ELEMENTS

2x RECLINING CHAIR

W71 x D84 x H89cm

2x FOOTSTOOL

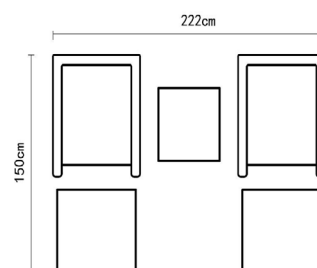
W64 x D64 x H42cm

COFFEE TABLE

W50 x D50 x H45cm



FLOORPLAN



COLOUR OPTIONS

RATTAN



GREY

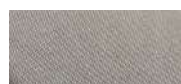


NATURAL

CUSHIONS



GREY



CAPPUCCINO

TABLE TOPS



CLEAR GLASS

SARASOTA BISTRO SETS OVERVIEW

COMPONENTS

SARASOTA BISTRO SET - ZYY-GL7093		
QTY	DESCRIPTION	DIMENSIONS
2	Single Armchairs	W60 x D58.5 x H90cm
1	Round Table	Dia 75 x H75cm

SARASOTA RECLINING SET - ZYY-GL7099		
QTY	DESCRIPTION	DIMENSIONS
2	Reclining Armchairs	W71 x D84 x H89cm
1	Coffee Table	W50 x D50 x H45cm
2	Footstools	W64 x D64 x H42cm

SARASOTA COMPANION SET - ZYY-GL7094		
QTY	DESCRIPTION	DIMENSIONS
2	Single Armchairs	W60 x D58.5 x H90cm
1	Side Table	W60 x D42 x H53cm

CARE INSTRUCTIONS

The rattan furniture has become so popular in recent years as it's a high-quality style of garden furniture, designed to last. Sarasota Collection is also lightweight, which allows it to be moved with ease.

The Sarasota Range can be left outside all year round however, we recommend using our Innovators Covers which provide waterproof protection from rain and dirt.

COLOUR OPTIONS

RATTAN



GREY

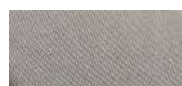


NATURAL

CUSHIONS



GREY



CAPPUCCINO

TABLE TOPS



CLEAR GLASS





SARASOTA
ROUND DINING SETS



The Sarasota Range features round dining sets with 4 or 6 armchairs.

Presented in either grey rattan weave with charcoal cushions or natural rattan weave with cappuccino cushions and come with a round dining table with glass top.

Find your ultimate dining space with the Sarasota round dining sets.

The sets come in an elegant double half hand woven rattan, with fabric seat cushions.

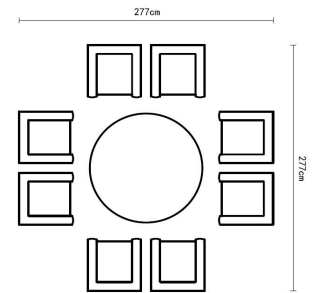
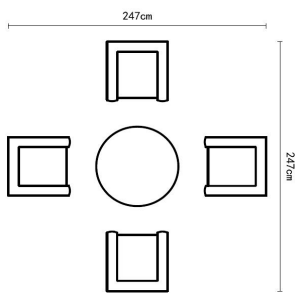
The weave is UV resistant and is woven onto a sturdy, rust proof aluminium frame, meaning it can be left outside all year.

The cushions are made from water resistant and easy care fabric for accidental spillages.

FEATURES

- Double half rattan, hand woven.
 - Aluminium frame.
 - 4/6 x armchairs.
- 1 x round table with glass top.
 - Hole in table to add parasol.
 - Available in grey rattan with charcoal fabric cushions or natural rattan with cappuccino fabric cushions.

FLOORPLAN



ELEMENTS

4x ARMCHAIR	ROUND TABLE	6x ARMCHAIR	ROUND TABLE
W60 x D58.5 x H90cm	Dia 110 x H75	W60 x D58.5 x H90cm	Dia 140 x H75



COLOUR OPTIONS

RATTAN		CUSHIONS		TABLE TOPS
				
GREY	NATURAL	GREY	CAPPUCCINO	CLEAR GLASS



SARASOTA
FIREPIT ROUND SET



The Sarasota 6-seater round Fire Pit dining set is an elegant dining set with 6 armchairs and a generously sized Fire Pit table.

Find your ultimate dining space with the Sarasota 6-seater Fire Pit round dining set.

The gas bottle is neatly stored in the base of the table and a round glass case protects the table when the fire pit is in use. A metal cover can then be put on the fire pit when not in use.

This is the perfect finish to your outdoor setting ready to keep you warm into the long summer evenings out in the garden.

FEATURES

- Double half rattan, hand weaved.
- Aluminium frame.
- 6 x armchairs.
- Firepit table.
- Available in grey rattan with charcoal fabric cushions or natural rattan with cappuccino fabric cushions.

ELEMENTS

6x ARMCHAIR

W60 x D58.5 x H90cm

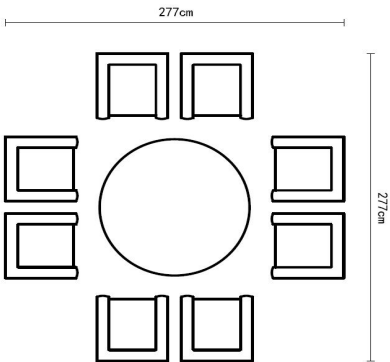


FIRE PIT ROUND TABLE

Dia 140 x H75



FLOORPLAN



COLOUR OPTIONS

RATTAN



GREY



NATURAL

CUSHIONS



GREY



CAPPUCCINO

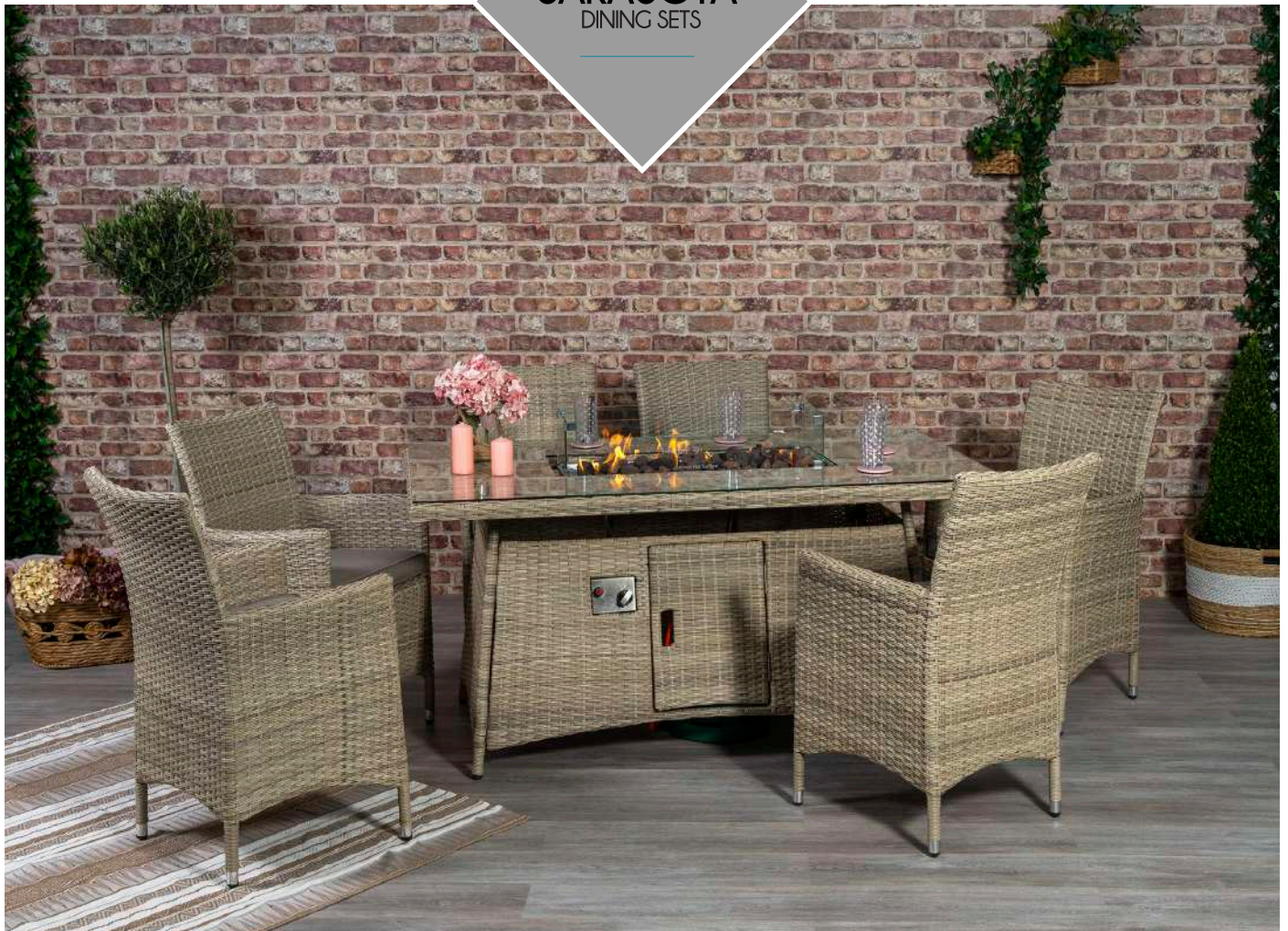
TABLE TOPS



CLEAR GLASS



SARASOTA
DINING SETS



The Sarasota rectangular dining set is a stylish dining set with 6 armchairs, the perfect addition to any outdoor space for dining and socialising with friends.

Presented in either grey rattan weave with charcoal cushions or natural rattan weave with cappuccino cushions with a round dining table with glass top.

The set comes in an elegant double half hand woven rattan with fabric cushions. The weave is UV resistant and is woven onto a sturdy, rust proof aluminium frame, meaning it can be left outside all year. The cushions are made from water resistant and easy care fabric for accidental spillages.

If you are looking for something extra special, there is the option to have this Sarasota 6-seater dining set with a fire pit table instead, the perfect finish to your outdoor setting ready to keep you warm during the long summer evenings out in the garden.

FEATURES

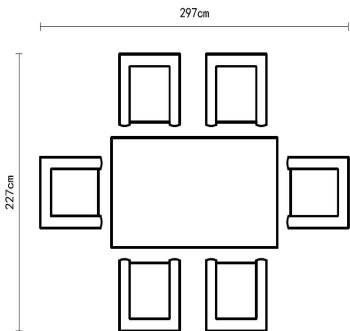
- Double half rattan, hand woven.
 - Aluminium frame.
 - 6 x armchairs.
- 1 x rectangular table with glass top.
 - Hole in table to add parasol.
 - Fire Pit option available.
 - Available in grey rattan with charcoal fabric cushions or natural rattan with cappuccino fabric cushions.

ELEMENTS

6x ARMCHAIR	RECTANGULAR TABLE	Or	FIRE PIT TABLE
W60 x D58.5 x H90cm	W160 x D90 x H75cm		W160 x D90 x H75cm



FLOORPLAN



COLOUR OPTIONS

RATTAN



GREY



NATURAL

CUSHIONS



GREY



CAPPUCCINO


TABLE TOPS





CLEAR GLASS


SARASOTA DINING SETS OVERVIEW


COMPONENTS

SARASOTA 5PC ROUND DINING SET - ZYY-GL7095		
		
QTY	DESCRIPTION	DIMENSIONS
4	Single Armchairs	W60 x D58.5 x H90cm
1	Round Dining Table	Dia 110 x H75

SARASOTA 7PC ROUND DINING SET - ZYY-GL7096		
		
QTY	DESCRIPTION	DIMENSIONS
6	Single Armchairs	W60 x D58.5 x H90cm
1	Round Dining Table	Dia 140 x H75

SARASOTA 7PC ROUND DINING SET FIREPIT - ZYY-GL7096R-FT		
		
QTY	DESCRIPTION	DIMENSIONS
6	Single Armchairs	W60 x D58.5 x H90cm
1	Round Dining Table	Dia 140 x H75

SARASOTA 7PC RECTANGLE DINING SET - ZYY-GL7097		
		
QTY	DESCRIPTION	DIMENSIONS
6	Single Armchairs	W60 x D58.5 x H90cm
1	Dining Table	W160 x D90 x H75cm

SARASOTA 7PC RECTANGLE DINING SET FIREPIT - ZYY-GL7097R-FT		
		
QTY	DESCRIPTION	DIMENSIONS
6	Single Armchairs	W60 x D58.5 x H90cm
1	Dining Table	W160 x D90 x H75cm

COLOUR OPTIONS

RATTAN



GREY

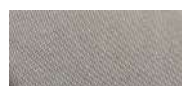


NATURAL

CUSHIONS



GREY



CAPPUCCINO

TABLE TOPS



CLEAR GLASS





SARASOTA
MINI MODULAR CORNER SET



Perfect for when you have guests to entertain or just relaxing outside on a glorious summers day, the Sarasota mini modular corner set includes everything you need to ensure a great addition to your living space.

This is the perfect corner set, compact yet still big enough for all your al fresco dining needs.

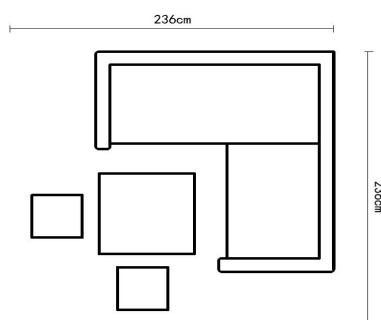
The set comes in an elegant double half hand woven rattan, with fabric cushions to the back and seat. The weave is UV resistant and is woven onto a sturdy, rust proof aluminium frame, meaning it can be left outside all year. The cushions are made from water resistant and easy care fabric for accidental spillages.

If you are looking for something extra special, there is the option to have this Sarasota mini modular corner set with a fire pit table instead.

FEATURES

- Double half rattan, hand woven.
- Aluminium frame.
- Square corner seating
- High back seating for adding comfort
- 1 x square table with glass top.
- Fire Pit option available.
- Available in grey rattan with charcoal fabric cushions or natural rattan with cappuccino fabric cushions.

FLOORPLAN

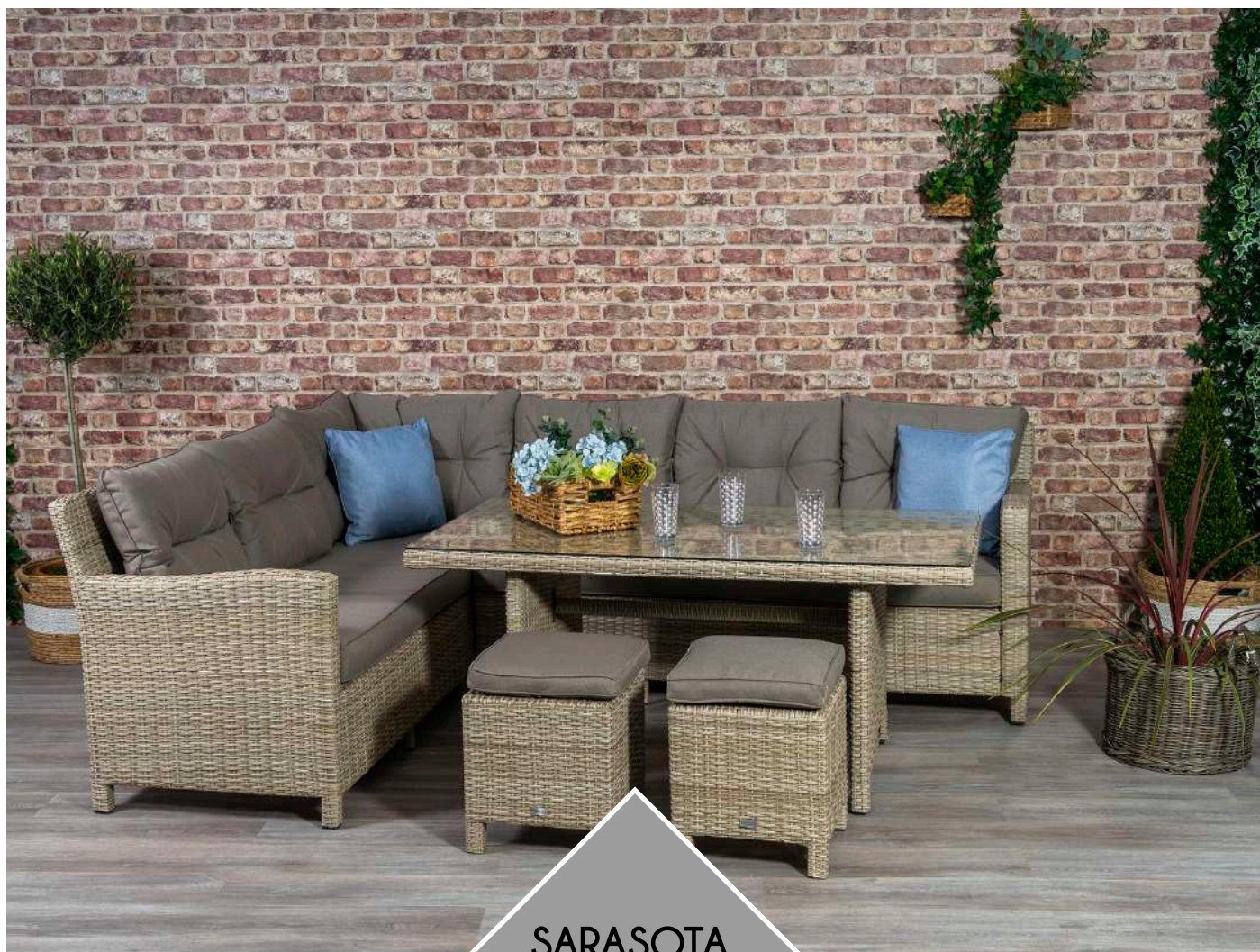


ELEMENTS

RIGHT SOFA	LEFT SOFA	2x OTTOMAN	SQUARE TABLE	Or	FIRE PIT TABLE
W110 x D78 x H70cm	W180 x D78 x H70cm	W38 x D38 x H40cm	W90 x D90 x H70cm		W110 x D110 x H70cm
					

COLOUR OPTIONS

RATTAN		CUSHIONS		TABLE TOPS
				
GREY	NATURAL	GREY	CAPPUCCINO	CLEAR GLASS



SARASOTA
MODULAR CORNER SET



The Sarasota modular corner set includes everything you need to ensure a great addition to your living space, the perfect corner set for all your al fresco dining needs.

The set comes in an elegant double half hand woven rattan, with fabric cushions to the back and seat. The weave is UV resistant and is woven onto a sturdy, rust proof aluminium frame, meaning it can be left outside all year. The cushions are made from water resistant and easy care fabric for accidental spillages.

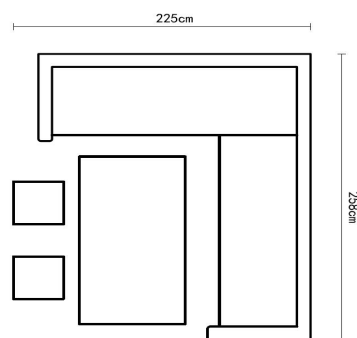
If you are looking for something extra special, there is the option to upgrade the Sarasota modular corner set to a fire pit table instead.

The firepit table has the depth to fit a plate so you can still dine at your leisure whilst enjoying the benefits of the firepit. This is the perfect finish to your outdoor setting ready to keep you warm into the long summer evenings out in the garden.

FEATURES

- Double half rattan, hand woven.
- Aluminium frame.
- Rectangular corner seating
- High back seating for adding comfort
- 1 x rectangular table with glass top.
- Fire Pit option available.
- Available in grey rattan with charcoal fabric cushions or natural rattan with cappuccino fabric cushions.

FLOORPLAN



ELEMENTS

RIGHT SOFA	LEFT SOFA	2x OTTOMAN	RECTANGULAR TABLE	Or	FIRE PIT TABLE
W206.5 x D78 x H85cm	W178 x D78 x H85cm	W38 x D38 x H40cm	W150 x D79 x H67cm		W150 x D79 x H67cm
					

COLOUR OPTIONS

RATTAN		CUSHIONS		TABLE TOPS
				
GREY	NATURAL	GREY	CAPPUCCINO	CLEAR GLASS



SARASOTA
MODULAR LOUNGE SET



The Sarasota modular lounge set is perfect for all your entertaining needs!

This rattan set includes 2 armchairs, a 3-seater sofa, 2 ottomans and a dining table with glass top. This is the ultimate dining set to enjoy with friends on a summer day.

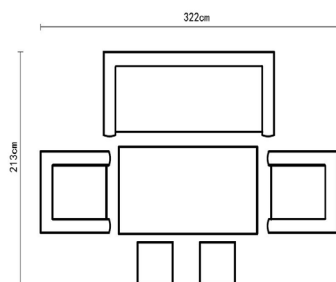
Presented in either grey rattan weave with charcoal cushions or natural rattan weave with cappuccino cushions with a glass topped side table.

The set comes in an elegant double half hand woven rattan, with fabric cushions to the back and seat. The weave is UV resistant and is woven onto a sturdy, rust proof aluminium frame, meaning it can be left outside all year. The cushions are made from water resistant and easy care fabric for accidental spillages.

FEATURES

- Double half rattan, hand woven.
- Aluminium frame.
- 2 x armchairs.
- 1 x 3-seater sofa.
- 2 x ottomans.
- 1 x rectangular dining table with glass top.
- All seats have high backs for added comfort.
- Available in grey rattan with charcoal fabric cushions or natural rattan with cappuccino fabric cushions.

FLOORPLAN



ELEMENTS

2x ARMCHAIR

W74 x D76 x H89cm



3 SEATER SOFA

W185 x D76 x H89cm



2x OTTOMAN

W38 x D38 x H40cm



RECTANGULAR TABLE

W150 x D79 x H67cm



COLOUR OPTIONS

RATTAN



GREY



NATURAL

CUSHIONS



GREY



CAPPUCCINO

TABLE TOPS



CLEAR GLASS


SARASOTA MODULAR SETS OVERVIEW

COMPONENTS

SARASOTA MINI MODULAR CORNER SET - ZYY-GL7101		
		
QTY	DESCRIPTION	DIMENSIONS
1	Square Table	W90 x D90 x H70cm
1	1 Arm Sofa	W110 x D78 x H70cm
1	2 Arm Sofa	W180 x D78 x H70cm
2	Ottoman	W38 x D38 x H40cm

SARASOTA MINI MODULAR FIREPIT CORNER SET - ZYY-GL7100R-FT		
		
QTY	DESCRIPTION	DIMENSIONS
1	Fire Pit Table	W110 x D110 x H70cm
1	1 Arm Sofa	W110 x D78 x H70cm
1	2 Arm Sofa	W180 x D78 x H70cm
2	Ottoman	W38 x D38 x H40cm

SARASOTA MODULAR CORNER SET - ZYY-GL7102		
		
QTY	DESCRIPTION	DIMENSIONS
1	Rectangular Table	W150 x D79 x H67cm
1	1 Arm Sofa	W206.5 x D78 x H85cm
1	2 Arm Sofa	W178 x D78 x H85cm
2	Ottoman	W38 x D38 x H40cm

SARASOTA MODULAR FIREPIT CORNER SET - ZYY-GL7102R		
		
QTY	DESCRIPTION	DIMENSIONS
1	Fire Pit Table	W150 x D79 x H67cm
1	1 Arm Sofa	W206.5 x D78 x H85cm
1	2 Arm Sofa	W178 x D78 x H85cm
2	Ottoman	W38 x D38 x H40cm

SARASOTA MODULAR LOUNGE SET - ZYY-GL7103		
		
QTY	DESCRIPTION	DIMENSIONS
1	Rectangular Table	W150 x D79 x H67cm
1	Dining Sofa	W185 x D76 x H89cm
2	Dining Chair	W74 x D76 x H89cm
2	Ottoman	W38 x D38 x H40cm

COLOUR OPTIONS

RATTAN



GREY

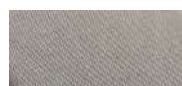


NATURAL

CUSHIONS



GREY



CAPPUCCINO

TABLE TOPS



CLEAR GLASS





SARASOTA
LOUNGE SET



Relax in your garden with this stylish lounge set, the perfect addition to any garden or outdoor space this summer.

This set includes a 2-seater sofa, 2 armchairs and a coffee table and is the ultimate piece of furniture for socialising with friends in comfort.

Presented in either grey rattan weave with charcoal cushions or natural rattan weave with cappuccino cushions with a glass topped side table.

The set comes in an elegant double half hand woven rattan, with fabric cushions to the back and seat. The weave is UV resistant and is woven onto a sturdy, rust proof aluminium frame, meaning it can be left outside all year.

The cushions are made from water resistant and easy care fabric for accidental spillages.

FEATURES

- Double half rattan, hand woven.
- Aluminium frame.
- 2 x armchairs.
- 1 x 2-seater sofa.
- 1 x coffee table with glass top.
- All seats have high backs for added comfort.
- Available in grey rattan with charcoal fabric cushions or natural rattan with cappuccino fabric cushions.

ELEMENTS

2x ARMCHAIR

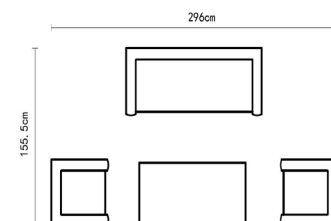
W58 x D61 x H86cm

LOUNGE SOFA

W140 x D85.5 x

COFFEE TABLE

W110 x D55 x H44cm



FLOORPLAN

COLOUR OPTIONS

RATTAN



GREY

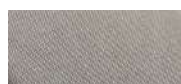


NATURAL

CUSHIONS



GREY



CAPPUCCINO

TABLE TOPS



CLEAR GLASS



SARASOTA
HIDEAWAY SET



The Sarasota hideaway set is the ideal space saving set that you were looking for.

You can easily pack the set away and save on space when the set is not in use. This stylish and space-efficient set is an ideal addition to any outdoor space. This set consists of a 2-seater sofa, 2 single chairs, 2 ottomans and a coffee table.

Simply remove the cushions to slide the chairs under the sofa, the stools slide under the table, and the stools and table then fit onto the sofa seat, making a compact cuboid!

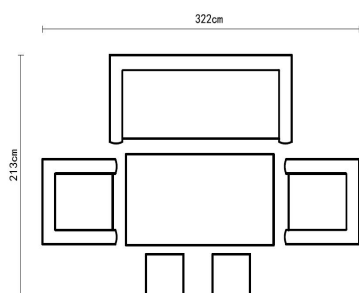
Presented in either grey rattan weave with charcoal cushions or natural rattan weave with cappuccino cushions with a glass topped side table.

The set comes in an elegant double half hand woven rattan, with fabric cushions to the back and seat. The weave is UV resistant and is woven onto a sturdy, rust proof aluminium frame, meaning it can be left outside all year.

FEATURES

- Double half rattan, hand woven.
- Aluminium frame.
- 2 x single chairs.
- 1 x 2-seater sofa.
- 2 x ottomans.
- 1 x coffee table with glass top.
- Available in grey rattan with charcoal fabric cushions or natural rattan with cappuccino fabric cushions.

FLOORPLAN



ELEMENTS

2x LOUNGE CHAIR

W63 x D71 x H59cm



LOUNGE SOFA

W142 x D71 x H63cm



2x OTTOMAN

W43 x D43 x H26cm



MODULAR TABLE

W100 x D51 x H30cm



COLOUR OPTIONS

RATTAN



GREY

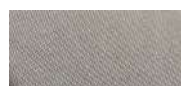


NATURAL

CUSHIONS



GREY



CAPPUCCINO

TABLE TOPS



CLEAR GLASS



SARASOTA
SUNLOUNGERS



Whether it's a bright spring morning or a hot summer day, you'll adore the Sarasota sun loungers. Shaped from woven rattan, this is the ideal way to stretch out and enjoy the feel of the fresh air in the most extravagantly relaxing way.

This innovative Folding Sunlounger is shaped for you to relax and unwind with the added feature of an adjustable reclining back.

This sunlounger also folds away so it can be used as a table or just as a space saving item for any outdoor space.

The Sunlounger Set features reclining back function, high seat back for ultimate comfort and a generously sized side table.

The cushions are made from water resistant and easy care fabric for accidental spillages.

FEATURES

- Double half rattan, hand weaved.
- Aluminium frame.
- 1 x side table with glass top
- Reclining levels on sun lounger for added comfort.
- Available in grey rattan with charcoal fabric cushions or natural rattan with cappuccino fabric cushions.

FLOORPLAN



ELEMENTS

FOLDING SUNLOUNGER

W198 x D59 x H38/82cm



SUNLOUNGER

W210 x D70 x H51cm



SIDE TABLE

W51 x D51 x H42cm

COLOUR OPTIONS

RATTAN



GREY



NATURAL

CUSHIONS



GREY



CAPPUCCINO

TABLE TOPS




CLEAR GLASS

SARASOTA LOUNGE SETS OVERVIEW

COMPONENTS

SARASOTA LOUNGE SET - ZYY-GL7098		
		
QTY	DESCRIPTION	DIMENSIONS
2	Single Lounge Chairs	W58 x D61 x H86cm
1	Lounge Sofa	W140 x D85.5 x H89cm
1	Coffee Table	W110 x D55 x H44cm

SARASOTA HIDEAWAY SET - ZYY-GL7222		
		
QTY	DESCRIPTION	DIMENSIONS
1	Modular Table	W100 x D51 x H30cm
1	Lounge Sofa	W142 x D71 x H63cm
2	Lounge Chairs	W63 x D71 x H59cm
2	Ottomans	W43 x D43 x H26cm

SARASOTA FOLDING SOUNLOUNGER- ZYY-GL7323		
		
QTY	DESCRIPTION	DIMENSIONS
1	Folding Sunlounger	W198 x D59 x H38/82cm

SARASOTA SOUNLOUNGER WITH TABLE - ZYY-GL7104		
		
QTY	DESCRIPTION	DIMENSIONS
1	Sunlounger	W210 x D70 x H51cm
1	Side Table	W51 x D51 x H42cm

SARASOTA SOUNLOUNGER SET - ZYY-GL7104R		
		
QTY	DESCRIPTION	DIMENSIONS
2	Sunloungers	W210 x D70 x H51cm
1	Side Table	W51 x D51 x H42cm

COLOUR OPTIONS

RATTAN



GREY



NATURAL

CUSHIONS



GREY



CAPPUCCINO

TABLE TOPS



CLEAR GLASS





SARASOTA
ACCESSORIES



This Sarasota cushion box is ideal for storing garden furniture accessories such as cushions.

The panels are lined with waterproof sheeting to give greater protection from the weather.

This is an aluminium frame cushion storage box that is encased with hand weaved double half rattan, making it both maintenance free and suitable for all weather conditions.

This Sarasota cushion storage box is available in grey or cappuccino rattan.

FEATURES

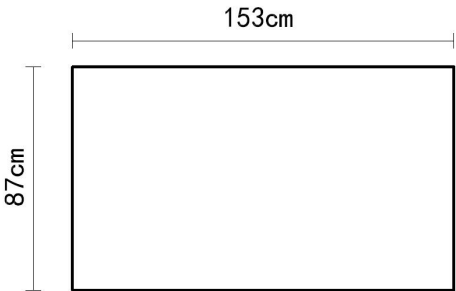
- Double half rattan, hand weaved.
- Aluminium frame.
- Available in grey rattan or cappuccino rattan.
- 100% waterproof lining.
- Zip closing on edge of lining.

ELEMENTS

FLOORPLAN

CUSHION BOX

W167 x D85 x H84cm



COLOUR OPTIONS

RATTAN



GREY



NATURAL



DELUXE
RECLINER SETS



Ensure you and your guests make the most of your outdoor living space with the Sarasota Deluxe recliner sets, the perfect blend of style, luxury and comfort.

The Sarasota deluxe dining set comes with a matching rattan base height adjustable table. This is the perfect table for socialising as it will suit whether you are having drinks and keep the table at its lowest function, or raise to a height that suits yourself to dine.

The sets come in an elegant double half hand woven rattan, with fabric cushions to the back and seat. The weave is UV resistant and is woven onto a sturdy, rust proof aluminium frame, meaning it can be left outside all year.

The cushions are made from water resistant and easy care fabric for accidental spillages.

The armchairs are reclining and the dining table is height adjustable.

FEATURES

- Double half rattan, hand woven.
 - Aluminium frame.
 - Reclining armchairs.
 - Table with tempered safety glass top.
- Reclining chair back release function.
 - Water resistant cushion covers.
 - Suitable for all weather.
 - Available in grey rattan with charcoal fabric cushions or natural rattan with cappuccino fabric cushions.

FLOORPLAN

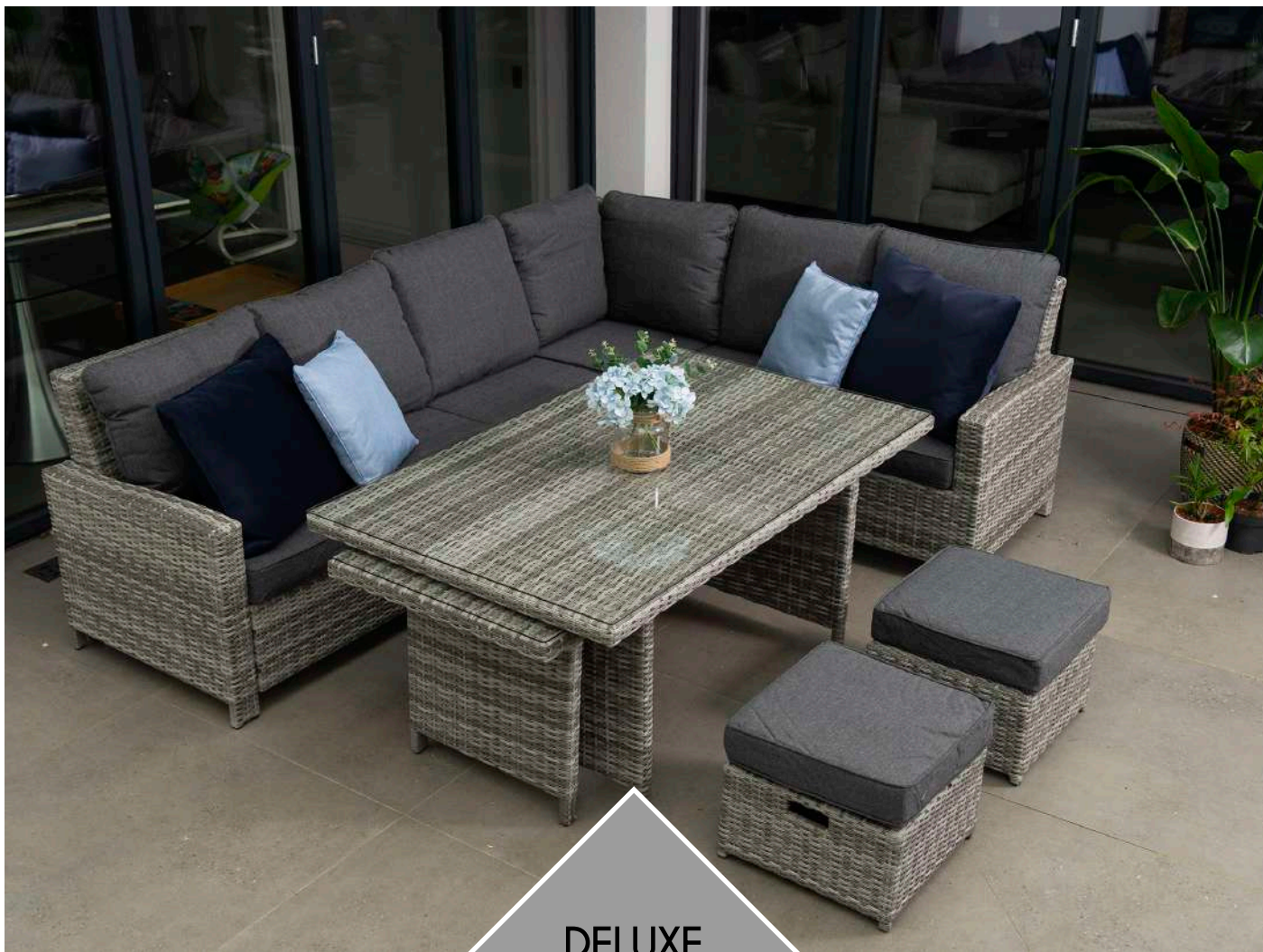


ELEMENTS

2x ARMCHAIR	SIDE TABLE	3 SEATER SOFA	2x ARMCHAIR	2x OTTOMAN	RISEING TABLE
W63.5 x D78.5 x H97cm	W47.5 x D47.5 x H56cm	W181 x D78.5 x H97cm	W63.5 x D78.5 x H97cm	W38 x D38 x H40cm	W140 x D80 x H45/68cm
					

COLOUR OPTIONS

RATTAN		CUSHIONS		TABLE TOPS
				
GREY	NATURAL	GREY	CAPPUCCINO	CLEAR GLASS



DELUXE
CORNER SET



The Sarasota Deluxe Extending Corner Set is the ultimate dining set for outdoor entertaining.

The set is designed to allow you to host large garden parties when needed but keep your garden space free when not required.

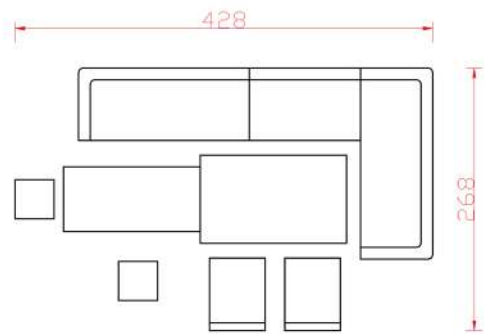
The Sarasota Deluxe Extending Corner Set includes 1 right-hand sofa piece, 1 left-hand sofa piece, 2 footstools, 2 hidden chairs and an extending dining table.

If you wish to extend your set, simply use the 2 extra single seats tucked into the back of the sofa pieces and another casual dining table that pulls out from underneath the original table.

FEATURES

- Double half rattan, hand weaved.
- Aluminium frame.
- Reclining armchairs.
- Table with tempered safety glass top.
- Reclining chair back release function.
- Water resistant cushion covers.
- Suitable for all weather.
- Available in grey rattan with charcoal fabric cushions or natural rattan with cappuccino fabric cushions.

FLOORPLAN



ELEMENTS

2 ARM 3 SEATER SOFA	1 ARM 3 SEATER SOFA	SINGLE SOFA	2x SINGLE CHAIR	2x OTTOMAN	EXTENDING TABLE
W186 x D74 x H83cm	W156 x D74 x H83cm	W113 x D65 x H83cm	W56 x D65 x H79cm	W38 x D38 x H40cm	W150/325 x D90 x H70cm
					

COLOUR OPTIONS

RATTAN		CUSHIONS		TABLE TOPS
				
GREY	NATURAL	GREY	CAPPUCCINO	CLEAR GLASS



DELUXE
SOFA DAYBED



Make yourself comfortable on your Sarasota deluxe sofa bed, the perfect place to lie back and daydream.

Sarasota deluxe sofa bed includes 2 curved cushion sofas, two curved cushioned benches and a handy rising table with removeable cushion pad to create a versatile set for a variety of occasions.

When all the parts are pushed together you can stretch out comfortably, or you can separate the different parts of the set and use them individually if you prefer.

The circular part in the middle comes with cushions, so you can use it as a stool, and a poliwood top, so you can use it as a coffee table. Then, when it's time for dinner, raise the adjustable table up to dining height.

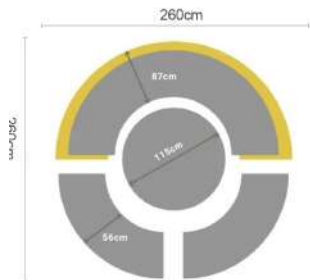
Presented in either grey rattan weave with charcoal cushions or natural rattan weave with cappuccino cushions.

FEATURES

- Double half rattan, hand weaved.
 - Aluminium frame.
 - 2 x curved cushioned sofas.
 - 2 x curved cushioned benches.
- 1 x rising table with removable cushioned top.
 - Water resistant cushion covers.
 - Suitable for all weather.
 - Available in grey rattan with charcoal fabric cushions or natural rattan with cappuccino fabric cushions.

ELEMENTS

2x CURVED SOFA	2X CURVED BENCH	LIFT TABLE
W179 x D86 x H86cm	W158 x D60 x H34cm	Dia. 120 x H40/67cm



COLOUR OPTIONS

RATTAN



GREY



NATURAL

CUSHIONS

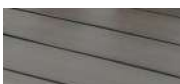


GREY



CAPPUCCINO

TABLE TOPS



POLYWOOD

SARASOTA DELUXE OVERVIEW

COMPONENTS

SARASOTA 3PC DELUXE RECLINER BISTRO SET - ZYY-GL		
QTY	DESCRIPTION	DIMENSIONS
2	Single Sofas	W63.5 x D78.5 x H97cm
1	Side Table	W47.5 x D47.5 x H56cm

SARASOTA 6PC DELUXE RECLINER SET - ZYY-GL		
QTY	DESCRIPTION	DIMENSIONS
1	3 Seater Sofa	W181 x D78.5 x H97cm
2	Armchairs	W63.5 x D78.5 x H97cm
1	Rising Table	W140 x D80 x H45/68cm
2	Ottomans	W38 x D38 x H40cm

SARASOTA DELUXE SOFA DAYBED - ZYY-GL		
QTY	DESCRIPTION	DIMENSIONS
2	Curved Sofas	W179 x D86 x H86cm
2	Curved Benches	W158 x D60 x H34cm
1	Lift Table	Dia. 120 x H40/67cm

SARASOTA DELUXE CORNER SET - ZYY-GL		
QTY	DESCRIPTION	DIMENSIONS
1	Left 3 Seater Sofa	W186 x D74 x H83cm
1	Right 3 Seater Sofa	W156 x D74 x H83cm
1	Single Sofa	W113 x D65 x H83cm
2	Chairs	W56 x D65 x H79cm
2	Ottomans	W38 x D38 x H40cm
1	Extending Table	W150/325 x D90 x H70cm

COLOUR OPTIONS

RATTAN



GREY

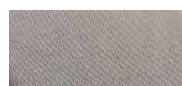


NATURAL

CUSHIONS



GREY



CAPPUCCINO

TABLE TOPS

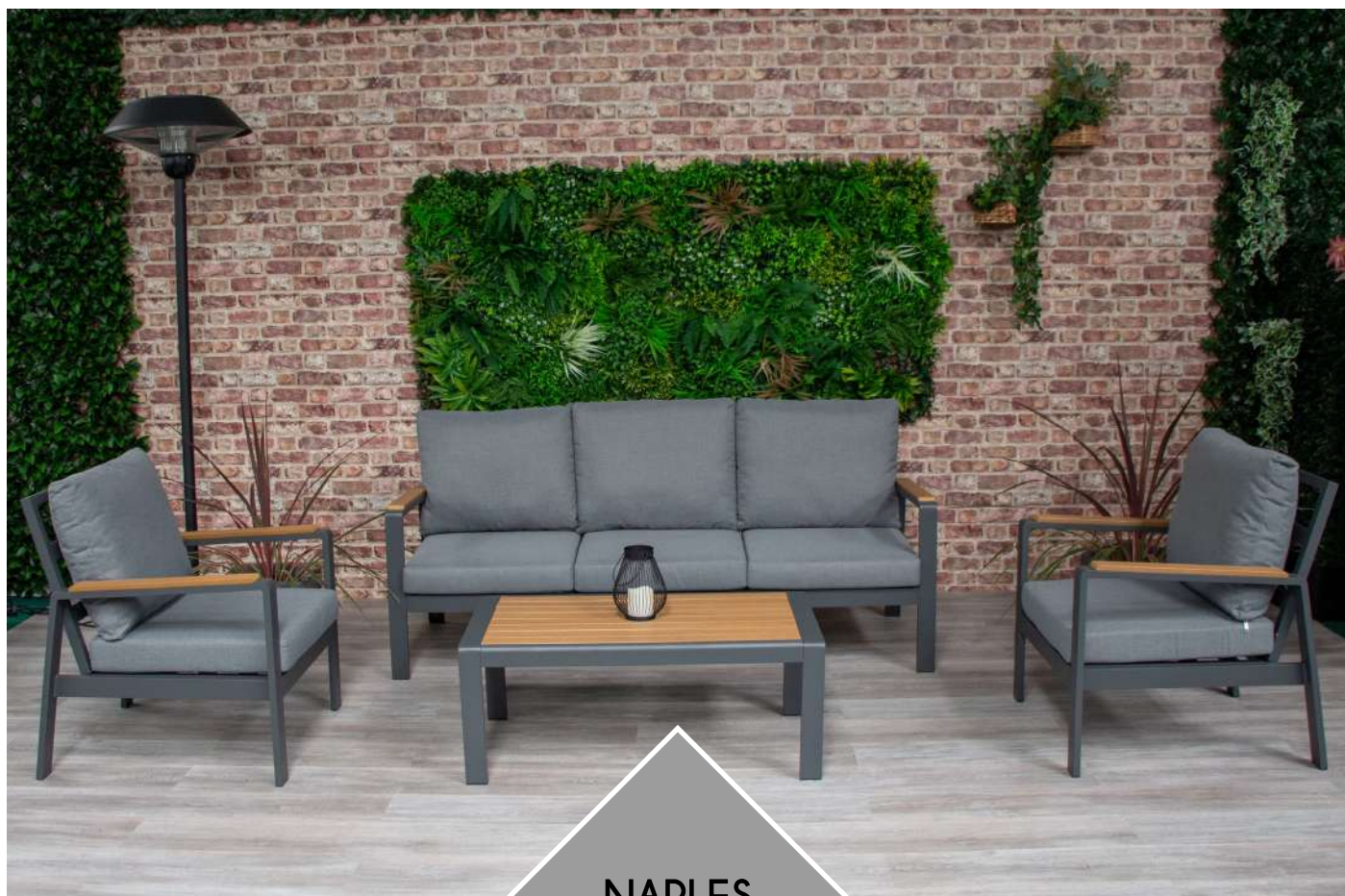


POLYWOOD



CLEAR GLASS





NAPLES
LOUNGE SETS



The Naples range represents a glorious modern option for gardens by the industry leaders.

The Naples collection is part aluminium, part Polywood, and offers stylish dining and lounging options for modern and chic outdoor spaces.

The Naples Lounge Sets consist of a 2 or a 3 seater sofa with 2 armchairs and a coffee table.

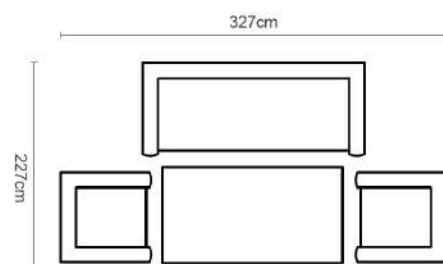
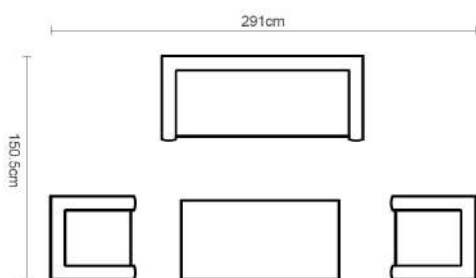
The table is topped with a beautiful Polywood top available in either dark grey or teak. The metal has been powder coated in a charcoal tone, meaning it won't ever rust.

Both sofas and armchairs benefit from polywood topped arm detailing. The cushions are available in grey colour and offer the same powder coating that the base offers.

FEATURES

- Polywood topped table
- Polywood arm details
- Powder coated aluminium
- High loading capacity
- All products are KD
- Available in Dark Grey or Teak Polywood

FLOORPLAN



ELEMENTS

2x ARMCHAIR	LOVE SEAT SOFA	COFFEE TABLE	2x ARMCHAIR	3 SEATER SOFA	COFFEE TABLE
W70.5 x D80.5 x H81cm	W129 x D80.5 x H81cm	W100 x D55 x H40cm	W70.5 x D80.5 x H81cm	W187 x D80.5 x H81cm	W100 x D55 x H40cm



COLOUR OPTIONS

ALUMINIUM



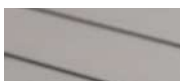
CHARCOAL

CUSHIONS

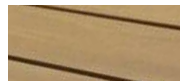


GREY

TABLE TOPS



GREY POLYWOOD



TEAK POLYWOOD



NAPLES
DINING SETS



The Naples Bistro and Dining Sets consist of modern and comfortable armchairs and table.

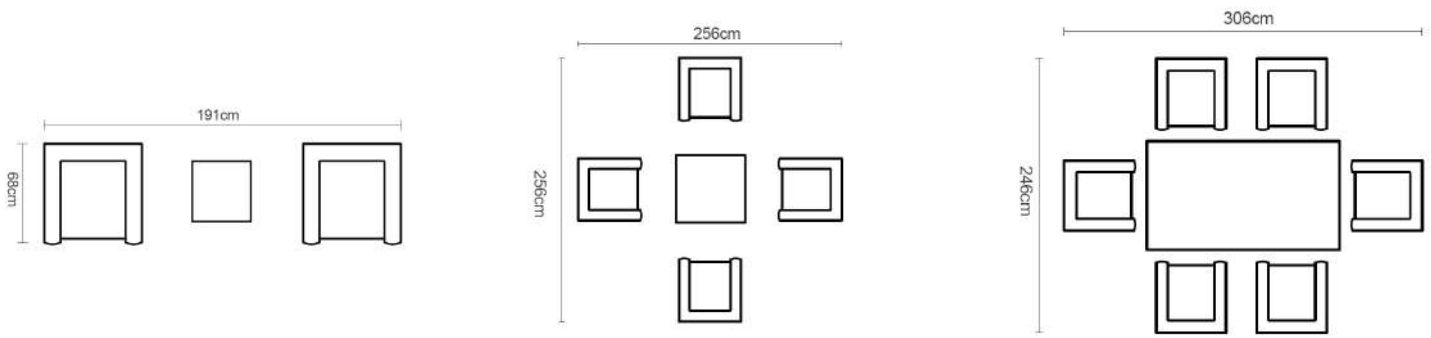
The tables are topped with a Polywood top available in either dark grey or teak. The metal has been powder coated in a charcoal tone, meaning it won't ever rust.

The armchairs have polywood topped arm detailing. The cushions are available in grey fabric.

FEATURES

- Polywood topped table
- Polywood arm details
- Powder coated aluminium
- High loading capacity
- All products are KD
- Available in Dark Grey or Teak Polywood

FLOORPLAN

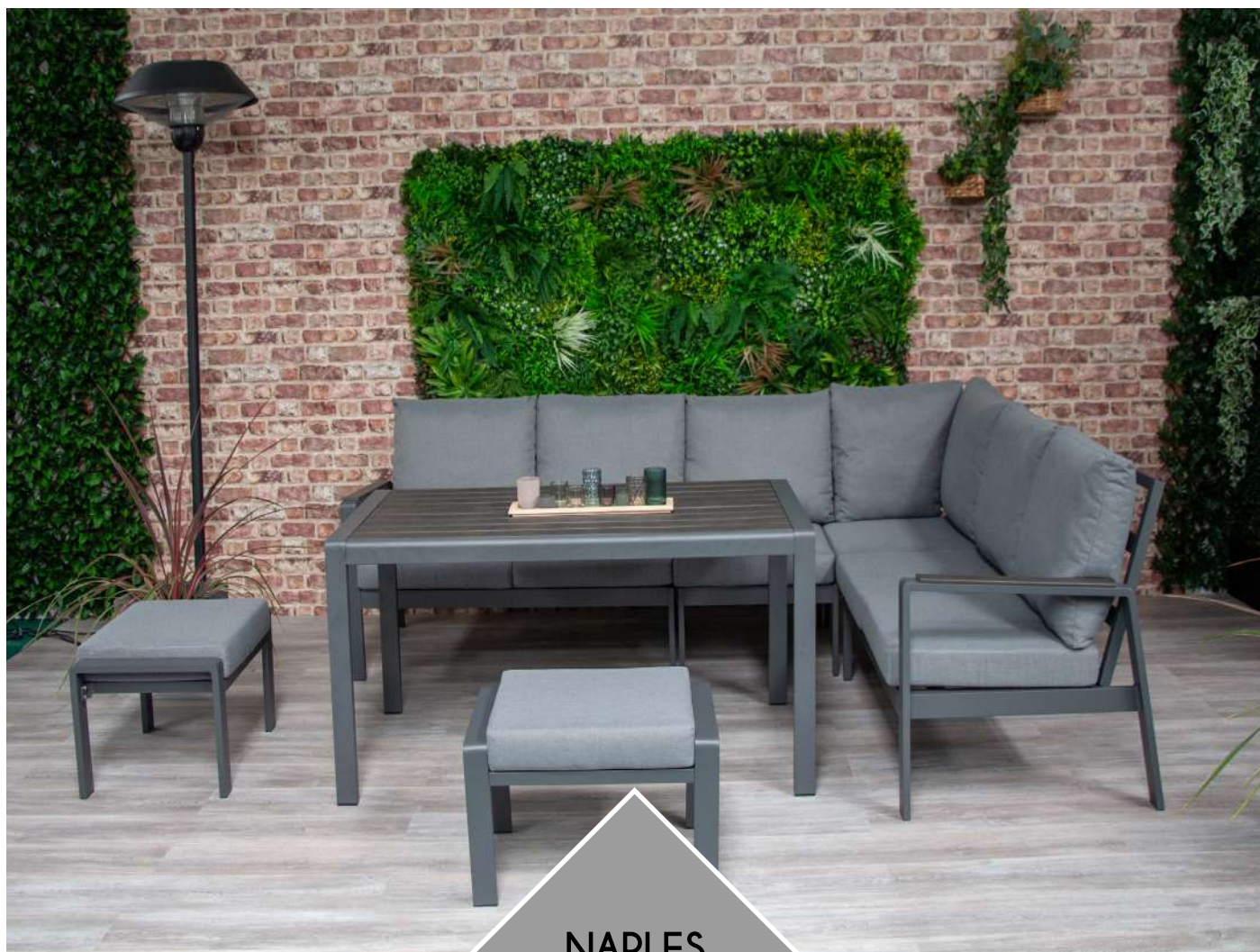


ELEMENTS

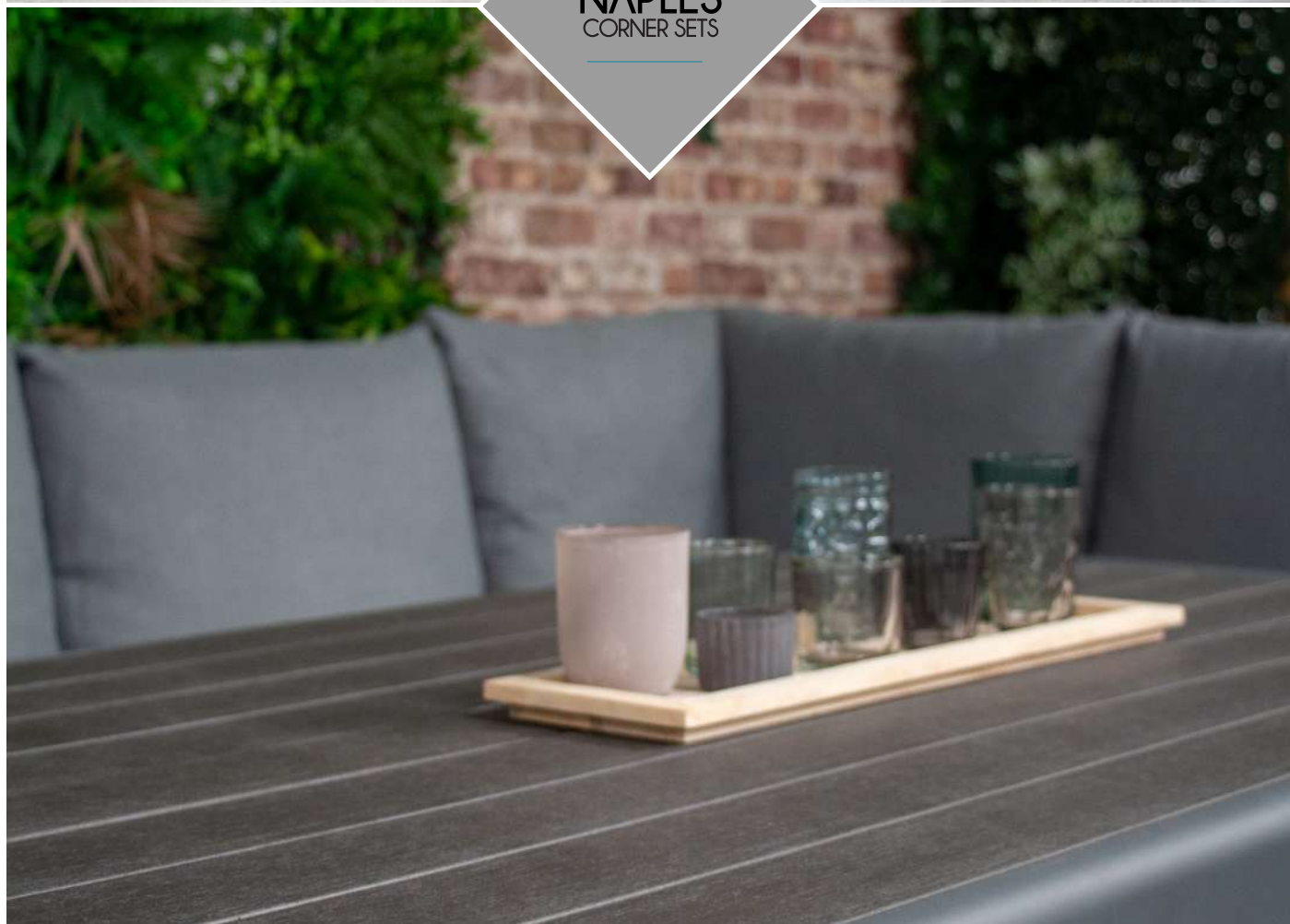
SINGLE CHAIR	SIDE TABLE	SINGLE CHAIR	DINING TABLE	SINGLE CHAIR	RECTANGLE DINING
W60 x D68 x H88cm	W51 x D51 x H51cm	W60 x D68 x H88cm	W90 x D90 x H73cm	W60 x D68 x H88cm	W150 x D90 x H73cm
					

COLOUR OPTIONS

ALUMINIUM	CUSHIONS	TABLE TOPS	
			
CHARCOAL	GREY	GREY POLYWOOD	TEAK POLYWOOD



NAPLES
CORNER SETS



Your outdoor furniture will be the centre of attention with the Naples corner sets, a contemporary range of aluminium framed outdoor furniture with the added touch of polywood, creating an attractive contrast to the charcoal coloured frames.

Naples Corner Sets consist of a modern corner sofa, 2 ottomans and a square or rectangular dining table.

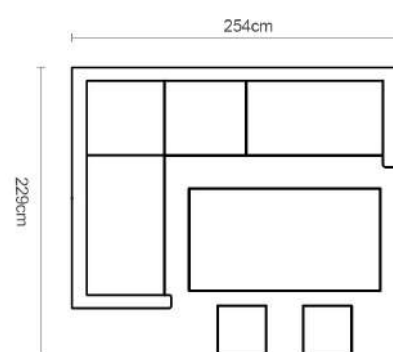
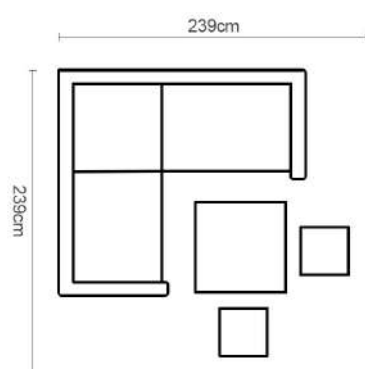
The tables are topped with a beautiful Polywood top available in either dark grey or teak. The metal has been powder coated in a charcoal tone, meaning it won't ever rust.

This modern set banks on its sturdiness to brave outdoor conditions. We love the contrast enhanced by the polywood armrests which will give your patio a welcoming, natural feel.

FEATURES

- Polywood Topped Table
- Polywood arm details
- Powder Coated Aluminium
- High loading capacity
- All products are KD
- Available in Dark Grey or Teak Polywood

FLOORPLAN



ELEMENTS

LEFT CORNER SOFA	RIGHT CORNER SOFA	END CORNER SOFA	2 X OTTOMAN	SQUARE TABLE	or	RECTANGULAR TABLE
W122 x D74 x H81cm	W122 x D74 x H81cm	W74 x D74 x H81cm	W58 x D45 x H30cm	W90 x D90 x H68cm		W140 x D80 x H68cm



COLOUR OPTIONS

ALUMINIUM



CHARCOAL

CUSHIONS

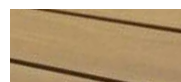


GREY

TABLE TOPS



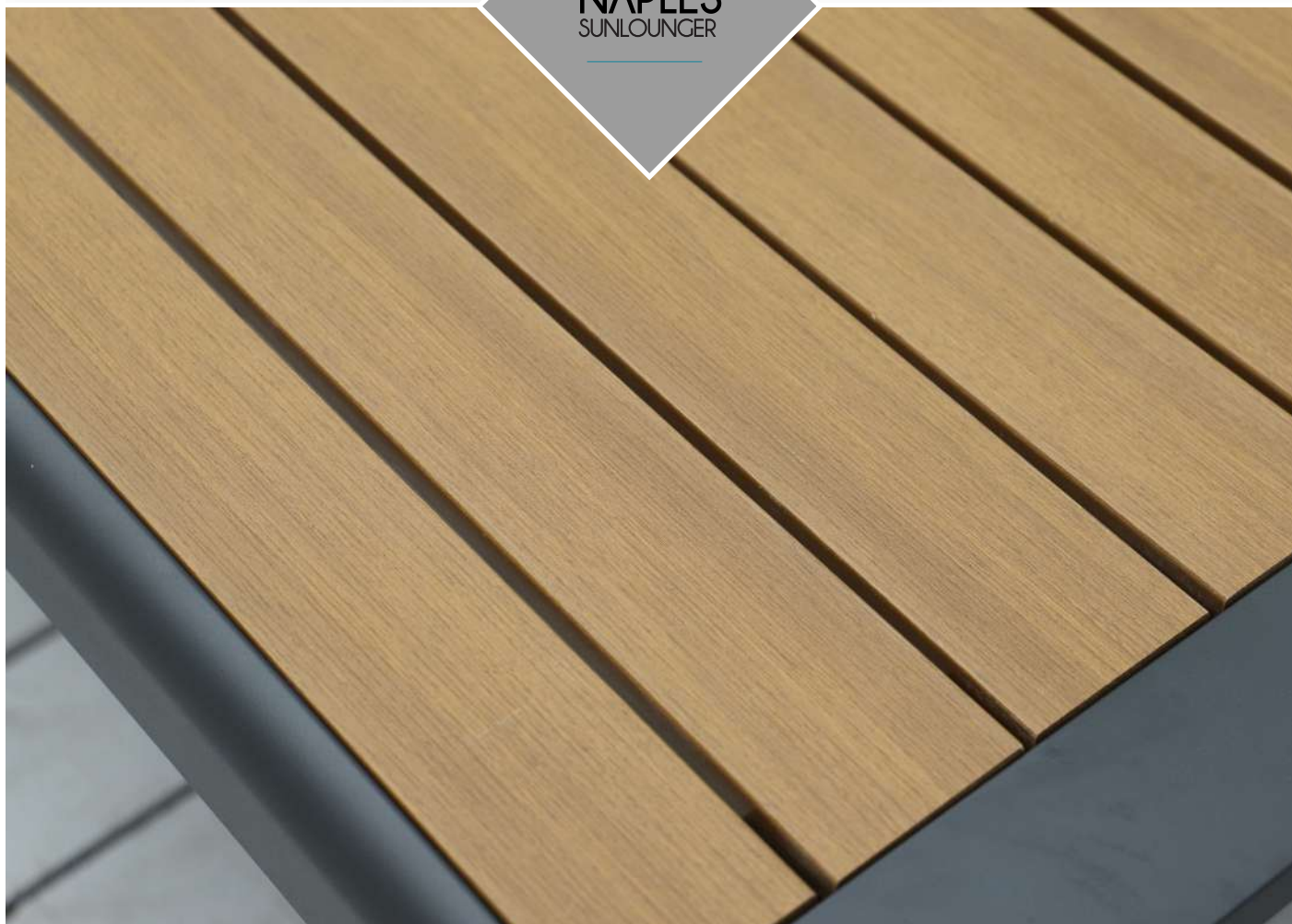
GREY POLYWOOD



TEAK POLYWOOD





NAPLES
SUNLOUNGER



SARASOTA NAPLES OVERVIEW


COMPONENTS


NAPLES 4 SEATER LOUNGE SET		
		
QTY	DESCRIPTION	DIMENSIONS
2	1 seater sofa	W70.5 x D80.5 x H81cm
1	Love Seat Sofa	W129 x D80.5 x H81cm
1	Coffee Table	W100 x D55 x H40cm


NAPLES 5 SEATER LOUNGE SET		
		
QTY	DESCRIPTION	DIMENSIONS
2	1 seater sofa	W70.5 x D80.5 x H81cm
1	3 seater Sofa	W187 x D80.5 x H81cm
1	Coffee Table	W100 x D55 x H40cm


NAPLES 3PC BISTRO SET		
		
QTY	DESCRIPTION	DIMENSIONS
2	Armchair	W60 x D68 x H88cm
1	Side Table	W51 x D51 x H51cm

NAPLES 4 SEATER DINING SET		
		
QTY	DESCRIPTION	DIMENSIONS
4	Armchair	W60 x D68 x H88cm
1	Dining Table	W90 x D90 x H73cm

NAPLES 6 SEATER DINING SET		
		
QTY	DESCRIPTION	DIMENSIONS
6	Armchair	W60 x D68 x H88cm
1	Dining Table	W150 x D90 x H73cm

NAPLES 6PC CORNER SET		
		
QTY	DESCRIPTION	DIMENSIONS
1	Left Corner Sofa	W122 x D74 x H81cm
1	Right Corner Sofa	W122 x D74 x H81cm
1	End Corner Sofa	W122 x D74 x H81cm
1	Dining Table	W90 x D90 x H68cm
2	Ottoman	W58 x D45 x H30cm

NAPLES 7PC CORNER SET		
		
QTY	DESCRIPTION	DIMENSIONS
1	Left Corner Sofa	W122 x D74 x H81cm
1	Right Corner Sofa	W122 x D74 x H81cm
1	End Corner Sofa	W122 x D74 x H81cm
1	Dining Table	W140 x D80 x H68cm
2	Ottoman	W58 x D45 x H30cm

NAPLES SUNLOUNGER SET		
		
QTY	DESCRIPTION	DIMENSIONS
1	Sunlounger	W178 x D67 x H50cm
1	Side Table	W51 x D51 x H51cm

SARASOTA COVERS

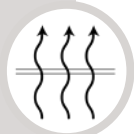
Innovators covers can significantly prolong the life of garden furniture providing protection from rain and dirt.

Innovators covers are made to measure to fit all our sets and they ensure the furniture has an extra layer of protection against harsh weathers as well as dirt and droppings.

Supplied in a carry bag with handles for easy storage when not in use.



100% Water Resistant



Breathable



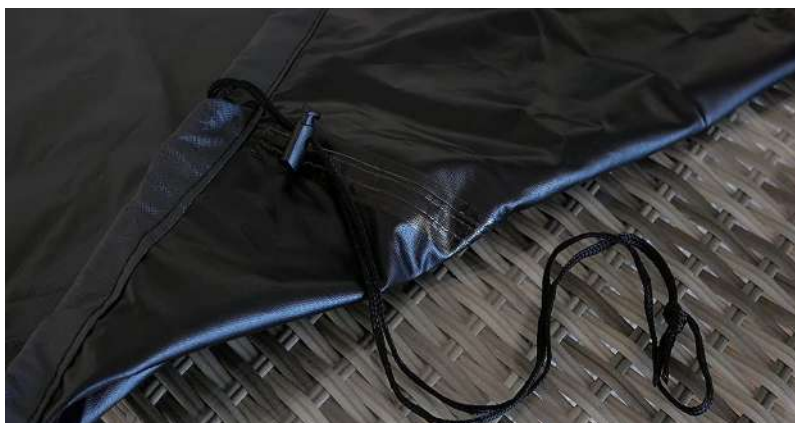
UV stabilised and fade resistant



Includes Carry Bag for easy storage



Includes strings for easy installation and removal



PRODUCT	DESCRIPTION	COVER DIMENSION	COVER SKU
	SARASOTA BISTRO SET	250 x 100 x 95cm	ZRN-XRY100
	2x Armchairs + Side Table		
	SARASOTA COMPANION SET	250 x 100 x 95cm	ZRN-MXRY100
	2x Armchairs + Side Table		
	SARASOTA 5 PC ROUND DINING SET	200 x 85cm	ZRN-GEN102
	4x Armchairs + Round Table		
	SARASOTA 7 PC ROUND DINING SET	250 x 85cm	ZRN-GEN103
	6x Armchairs + Round Table		
	SARASOTA 7 PC RECTANGULAR DINING SET	300 x 155 x 100cm	ZRN-GEN100
	6x Armchairs + Rectangular Table		
	SARASOTA MINI MODULAR CORNER LOUNGE DINING SET	255 x 255 x 70cm	ZRN-GEN104
	1x Corner set + 2x Ottoman + Square Table		
	SARASOTA MODULAR CORNER LOUNGE DINING SET	255 x 255 x 70cm	ZRN-GEN104
	1x Corner set + 2x Ottoman + Rectangular Table		
	SARASOTA MODULAR LOUNGE DINING SET	300 x 155 x 100cm	ZRN-GEN100
	1x Sofa + 2x Armchair + 2x Ottoman + Dining Table		
	SARASOTA DELUXE 3 PC RECLINER BISTRO SET	250 x 100 x 95cm	ZRN-XRY100
	2x Armchairs + Side Table		
	SARASOTA DELUXE 6 PC RECLINER LOUNGE SET	300 x 155 x 100cm	ZRN-GEN100
	1x Sofa + 2x Armchair + 2x Ottoman + Dining Table		

CANDOSA RANGE



A great addition to any garden or patio, the Candosa E-Coated Collection is the perfect set to kick back and relax with family and friends.

Designed with thick shower proof Spun Polyester padded cushions for comfort and safety, this garden furniture set is made with e-coated steel frames for strength and durability.

CANDOSA FEATURES

- Material: Durable E-coated Steel Frame, 18cm UKFR 220g SpunPoly Cushion with 5mm
- Tempered Glass, K/D Table
- Reclining chairs
- Rust-Free Frame
- Suitable for all weather

WHY E-COATING

E-Coat is an electrically-applied paint coating.

Its benefits are:

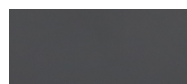
- Cosmetic Appeal: E-Coat paint applies a super-even finish, no dripping, no pooling and no gaps.
- Corrosion Protection: All parts are coated evenly inside and out. Complex parts can be coated even after assembly.
- Unbeatable Durability: Withstands the most rigorous salt spray, adhesion, dielectric, acid resistance, and U.V. tests.

HIGHLIGHTS



COLOUR OPTIONS

FRAME



CHARCOAL

TABLE TOP



CLEAR GLASS

CUSHIONS



GREY



CANDOSA
4PC E-COATED
PADDED SET



The 4pc Candosa set is the ultimate set to cater for all your outdoor socialising needs.

This set features 2 adjustable reclining padded armchairs, 1 adjustable reclining 2-seater sofa and a glass top coffee table.

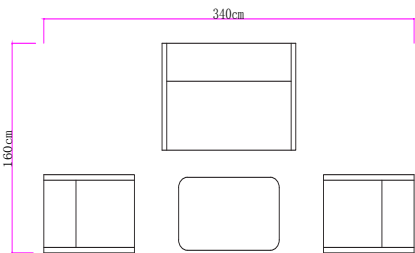
This 4pc Candosa set is E-coated steel which gives the product its corrosion protection and unbeatable durability as it withstands most rigorous salt sprays, adhesion, acid resistance and UV tests.

FEATURES

- Charcoal e-coated steel frame.
- Grey spun poly cushions.
- 1 x glass top coffee table.
- Grey tempered glass top.
- 2 x adjustable chairs with padded cushions.
- 1 x adjustable 2-seater sofa.

ELEMENTS

SINGLE ARMCHAIR	2 SEATER SOFA	COFFEE TABLE
W82 x D60 x H91cm	W82 x D121 x H91cm	W91 x D56 x H51cm



COLOUR OPTIONS

FRAME	TABLE TOP	CUSHIONS
		
CHARCOAL	CLEAR GLASS	GREY



CANDOSA
6/8PC E-COATED
PADDED SET



The 6/8pc Candosa sets are the ultimate set to cater for all your outdoor socialising needs.

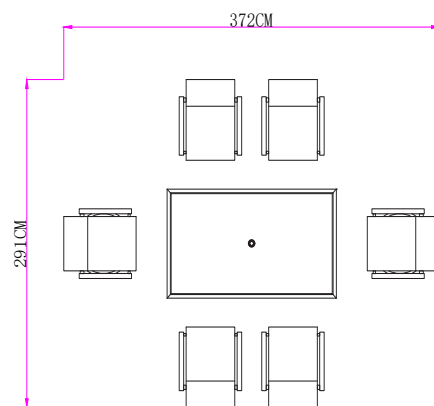
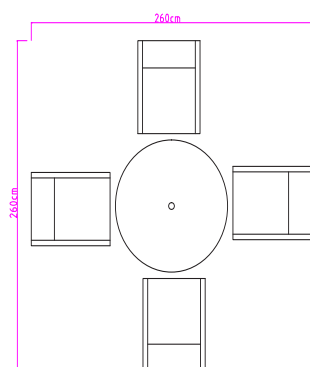
These sets feature 4 or 8 adjustable reclining padded chairs, 1 round or rectangular dining table and steel umbrella with crank and tilt function.

These 6/8 pc Candosa sets are E-coated steel which gives the products its corrosion protection and unbeatable durability as it withstands most rigorous salt sprays, adhesion, acid resistance and UV tests.

FEATURES

- Charcoal e-coated steel frame.
- Grey spun poly cushions.
- 1 x glass top dining table.
- Grey tempered glass top.
- 6/8 x adjustable chairs with padded cushions.
- 1 x steel umbrella with crank and tilt function with grey parasol.

FLOORPLAN



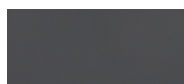
ELEMENTS

SINGLE ARMCHAIR	ROUND TABLE	PARASOL	SINGLE ARMCHAIR	DINING TABLE	PARASOL
W81 x D55 x H100cm	Dia. 101 x 72cm	2.7m	W81 x D55 x H100cm	W152.5 x D96.5 x H71cm	2.7m



COLOUR OPTIONS

FRAME



CHARCOAL

TABLE TOP



CLEAR GLASS

CUSHIONS



GREY



CANDOSA

11PC E-COATED
PADDED SET



The 11pc Candosa set is the ultimate set to cater for all your outdoor socialising needs.

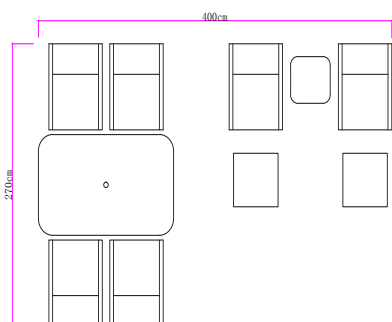
This set features 6 adjustable reclining padded chairs, 1 dining table, 1 side table, 2 ottomans and a steel umbrella with crank and tilt function.

This 11pc Candosa set is E-coated steel which gives the product its corrosion protection and unbeatable durability as it withstands most rigorous salt sprays, adhesion, acid resistance and UV tests.

FEATURES

- Charcoal e-coated steel frame.
- Grey spun poly cushions.
- 1 x glass top dining table.
- 1 x glass top side table.
- Grey tempered glass tops.
- 6 x adjustable chairs with padded cushions.
- 2 x ottomans.
- 1 x steel umbrella with crank and tilt function with grey parasol.

FLOORPLAN



ELEMENTS

SINGLE ARMCHAIR	OTTOMAN	SIDE TABLE	DINING TABLE	PARASOL
W81 x D55 x H100cm	W54 x D44 x H30cm	W45 x D45 x H51cm	W152 x D96 x H72cm	2.7m



COLOUR OPTIONS

FRAME	TABLE TOP	CUSHIONS
		
CHARCOAL	CLEAR GLASS	GREY




CANDOSA
E-COATED
SUNLOUNGER




CANDOSA OVERVIEW


COMPONENTS


CANDOSA 11PC E-COATED PADDED SET		
		
QTY	DESCRIPTION	DIMENSIONS
6	Padded Adjustable Chairs	W81 x D55 x H100cm
2	Ottomans	W54 x D44 x H30cm
1	Side Table	W45 x D45 x H51cm
1	Dining Table	W152 x D96 x H72cm
1	Parasol	Dia. 270cm

CANDOSA 8PC E-COATED PADDED SET		
		
QTY	DESCRIPTION	DIMENSIONS
6	Padded Armchairs	W81 x D55 x H100cm
1	Dining Table	W152.5 x D96.5 x H71cm
1	Parasol	Dia. 270cm

CANDOSA 4PC E-COATED PADDED SET		
		
QTY	DESCRIPTION	DIMENSIONS
2	Padded Armchairs	W82 x D60 x H91cm
1	Padded 2 Seater Sofa	W82 x D121 x H91cm
1	Coffee Table	W91 x D56 x H51cm

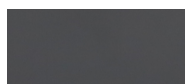
CANDOSA CONVERSATION PADDED SET		
		
QTY	DESCRIPTION	DIMENSIONS
2	Padded Armchairs	W81 x D55 x H100cm
2	Ottomans	W54 x D44 x H30cm
1	Side Table	W45 x D45 x H51cm

CANDOSA 6PC E-COATED PADDED SET		
		
QTY	DESCRIPTION	DIMENSIONS
4	Padded Armchairs	W81 x D55 x H100cm
1	Dining Table	Dia. 101 x H72cm
1	Parasol	Dia. 270cm

CANDOSA E-COATED PADDED SUNLOUNGER		
		
QTY	DESCRIPTION	DIMENSIONS
1	Sunlounger	W159 x D67 x H96cm

COLOUR OPTIONS

FRAME



CHARCOAL

TABLE TOP

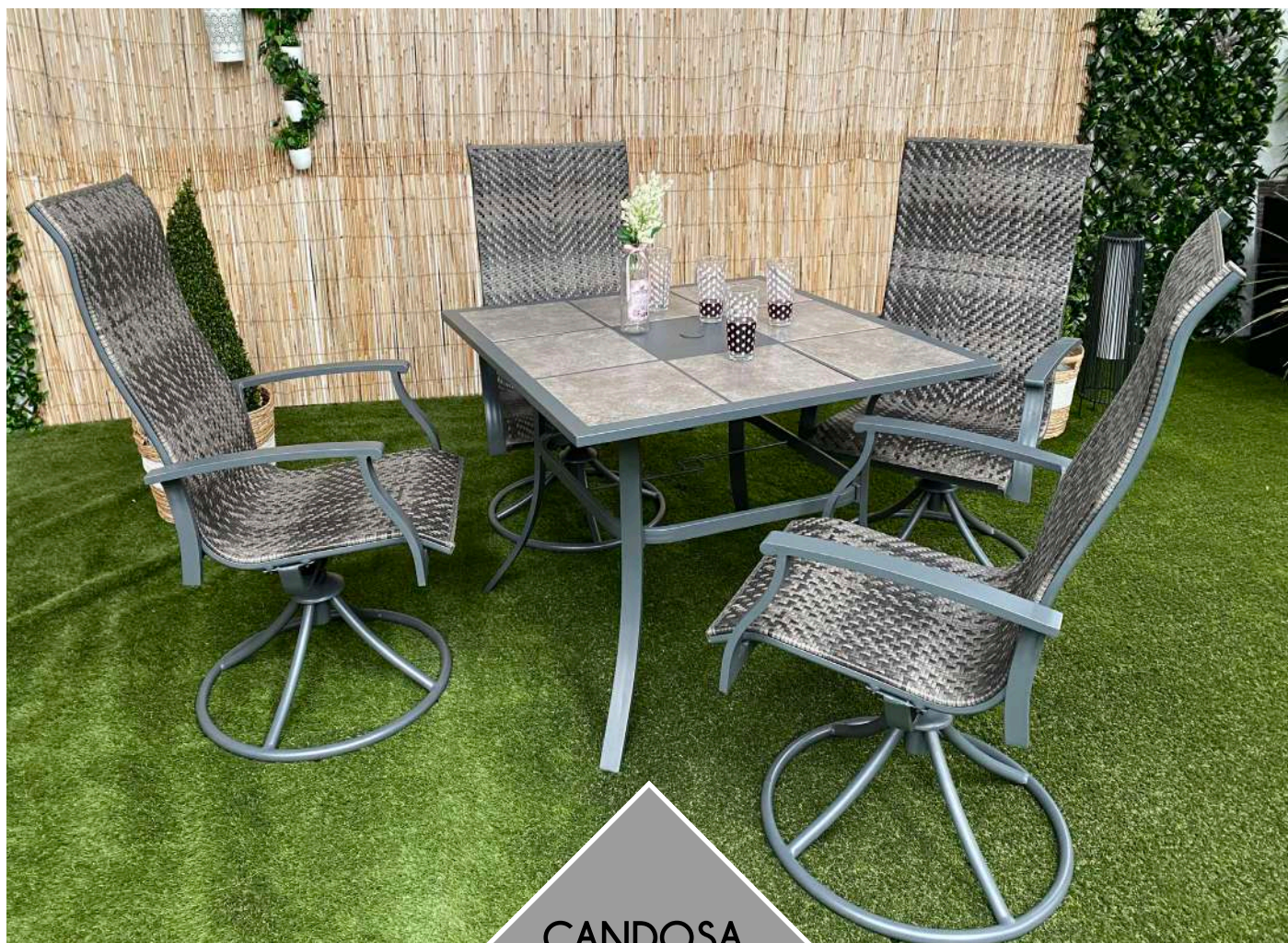


CLEAR GLASS

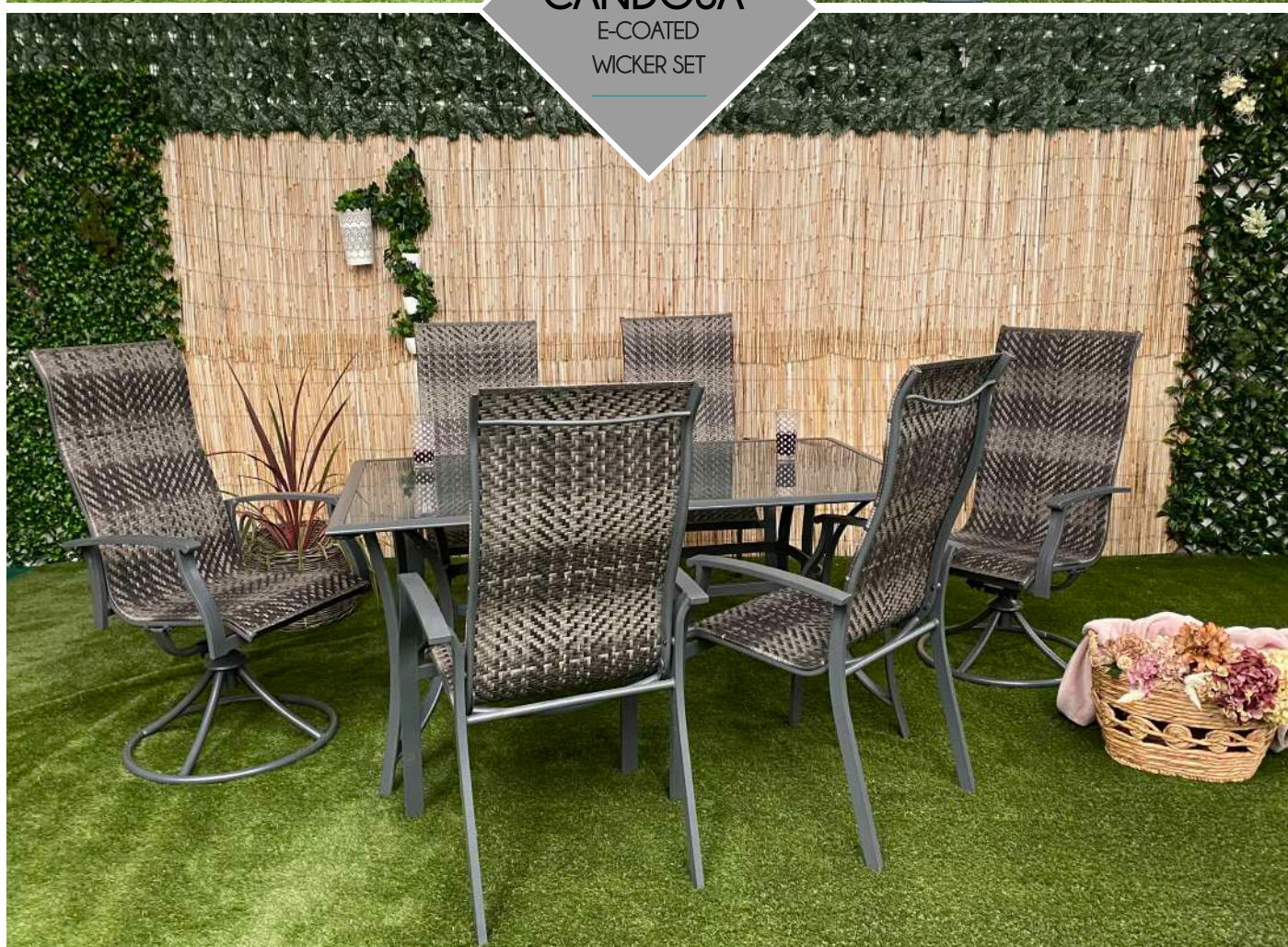
CUSHIONS



GREY



CANDOSA
E-COATED
WICKER SET



Relax in your garden with these stylish Candosa dining sets, the perfect addition to any garden or outdoor space this summer.

These set include swivel chairs and dining tables and are the ultimate piece of furniture for socialising with friends in comfort.

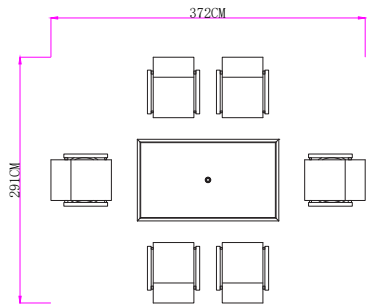
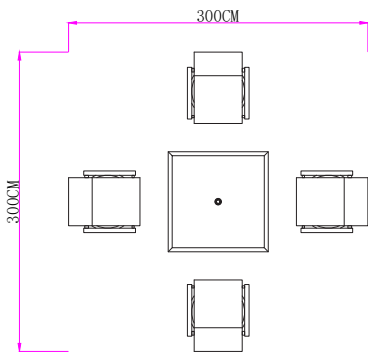
Presented in charcoal frame, with black and brown rattan. They come with either a tile topped square table or a glass topped rectangular table.

Also, the chairs swivel for extra comfort.

FEATURES

- Charcoal e-coated steel frame.
- 1 x tile top dining table.
- 4 x swivel chairs.
- Parasol Hole.
- Machine Rattan.
- Swivel chairs.
- High loading capacity.

FLOORPLAN



ELEMENTS

SWIVEL ARMCHAIR	SQUARE TILE TABLE	SWIVEL ARMCHAIR	DINING CHAIR	GLASS DINING TABLE
W72 x D65 x H108cm	W100 x D100 x H72cm	W72 x D65 x H108cm	W72 x D65 x H108cm	W167 x D97 x H71cm



COLOUR OPTIONS

FRAME	TABLE TOPS		RATTAN
			
CHARCOAL	CLEAR GLASS	TILE TOP	GREY



CANDOSA

E-COATED
WICKER SET



Relax in your garden with these stylish Candosa dining sets, the perfect addition to any garden or outdoor space this summer.

Choose from cushioned or reclining chairs and dine in style with these glass topped dining sets.

Both sets are presented in charcoal frame, black and brown rattan and come with either a tile topped square table or a glass topped rectangular table.

FEATURES

- Charcoal e-coated steel frame.
- 1 x rectangular dining table.
- 6 x armchairs.
- Parasol Hole.
- Machine Rattan.
- High loading capacity.

FLOORPLAN



ELEMENTS

ARMCHAIR	DINING TABLE	RECLINING ARMCHAIR	DINING TABLE
W66 x D62 x H94cm	W152.5 x D96.5 x H72cm	W72 x D56 x H98cm	W150 x D90 x H72cm

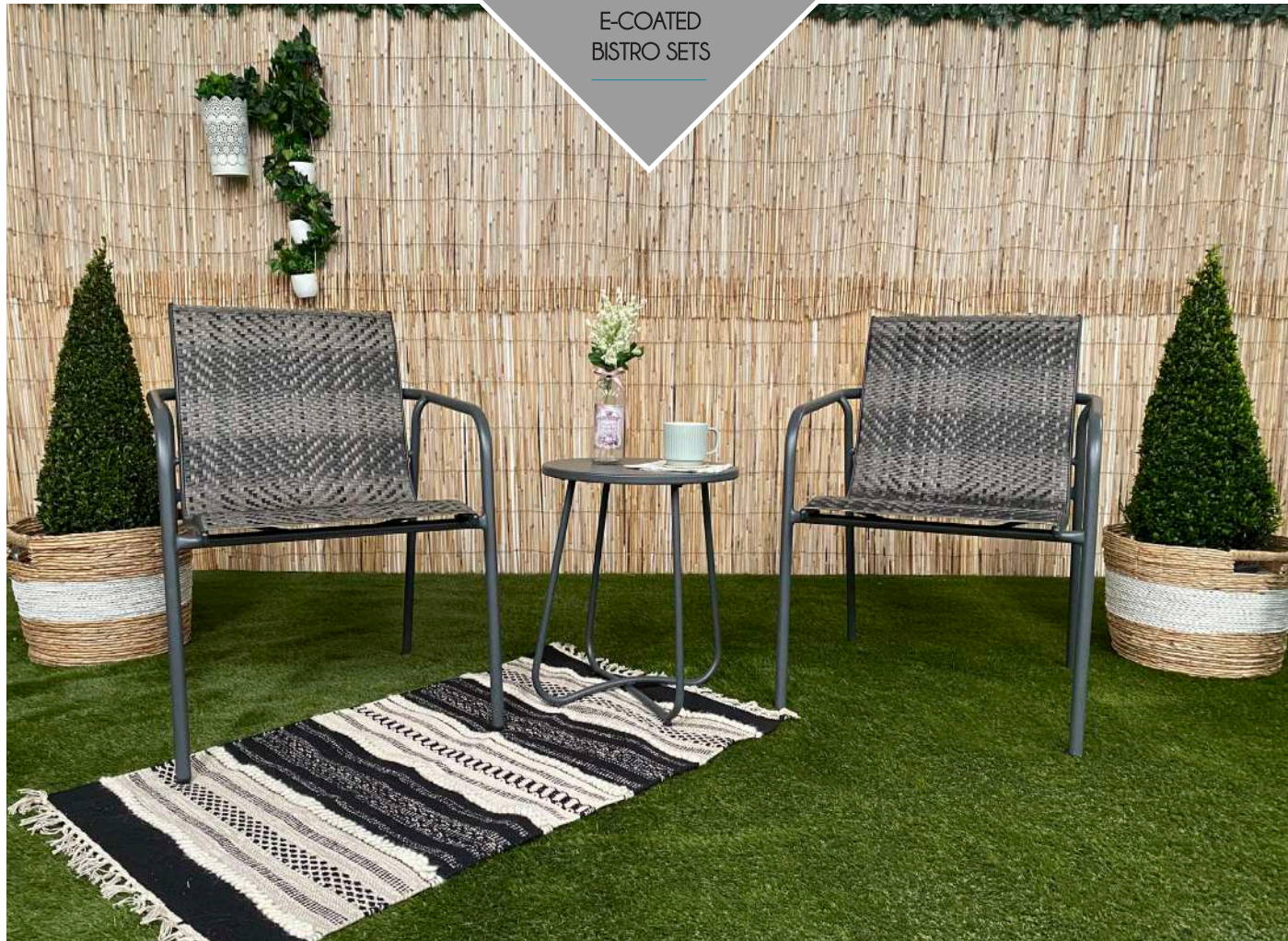


COLOUR OPTIONS

FRAME	TABLE TOPS	CUSHION	RATTAN
CHARCOAL	CLEAR GLASS	GREY	GREY



CANDOSA
E-COATED
BISTRO SETS



Enjoy socialising in total luxury, comfort and style with the Candosa Bistro Sets.

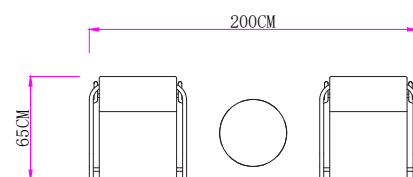
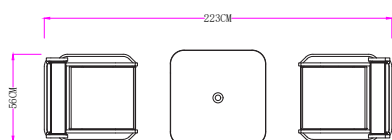
This versatile set will add a touch of class to your outdoor or indoor setting and it's the ideal furniture for dinner drinks as well as relaxed casual dining.

Both sets are presented in charcoal frame, black and brown rattan and come with either a tile topped square table or a glass topped rectangular table.

FEATURES

- Charcoal e-coated steel frame.
- 1 x side table.
- 2 x armchairs.
- Parasol Hole.
- Machine Rattan.
- High loading capacity.

FLOORPLAN



ELEMENTS

CHAIR	GLASS SIDE TABLE	CHAIR	STEEL SIDE
W58.5 x D56 x H99cm	W61 x D61 x H84cm	W66 x D61 x H83cm	Dia. 42 x 50cm

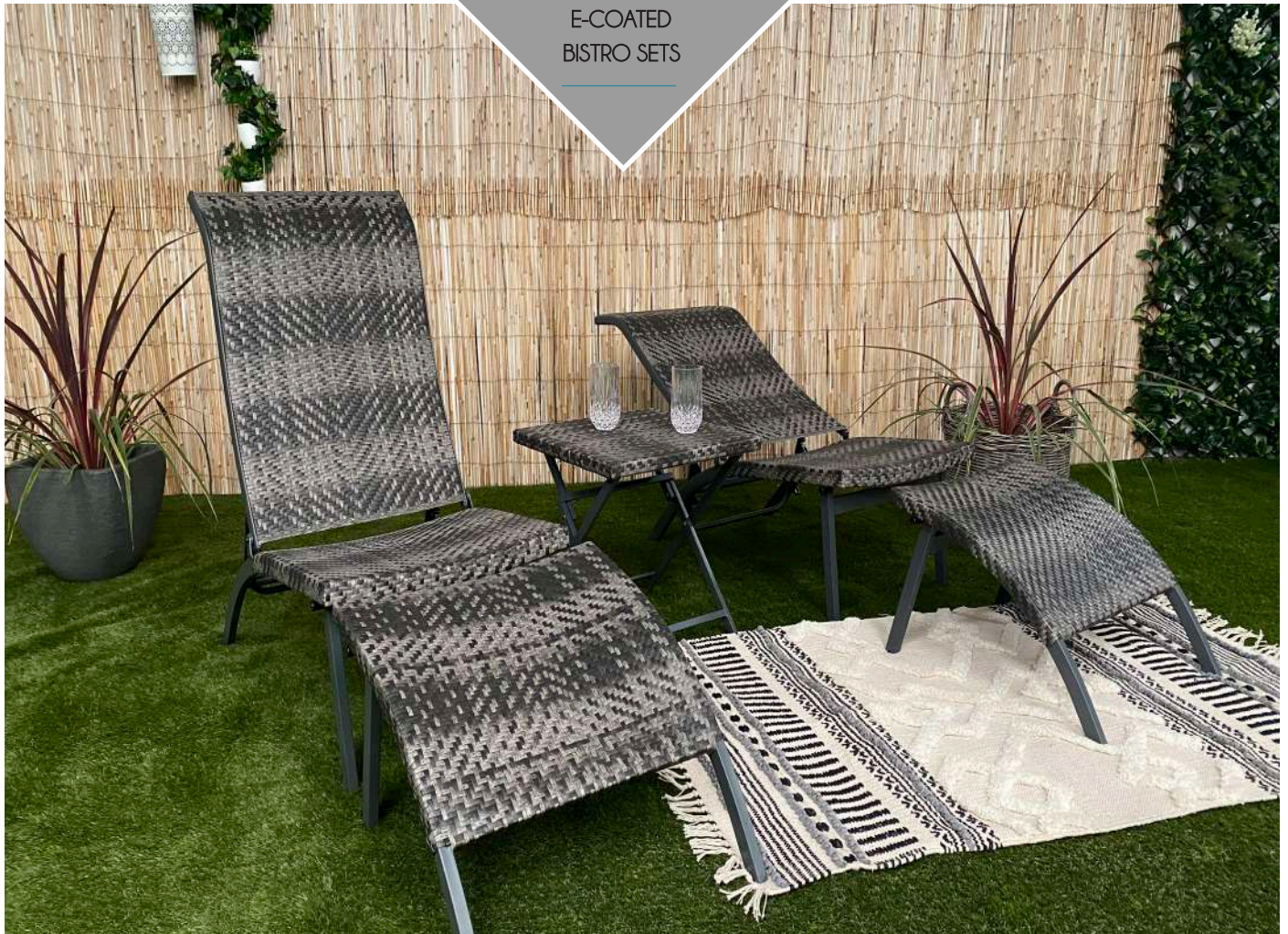


COLOUR OPTIONS

FRAME	TABLE TOPS		RATTAN
			
CHARCOAL	CLEAR GLASS	STEEL	GREY



CANDOSA
E-COATED
BISTRO SETS



Turn your garden into a relaxing escape and put your feet up with Candosa Bistro Sets featuring reclining chairs and footstools, the perfect way of enjoying the sunshine with a friend or loved one.

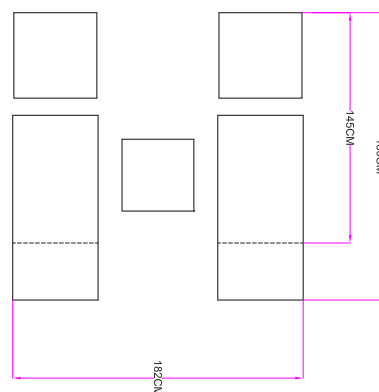
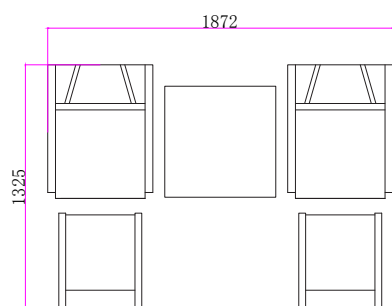
These exquisite sets consists of 2 comfortable reclining armchairs, 2 ottomans and a luxurious bistro table.

The Candosa Folding Relaxer set can be completely folded. Fold away chairs, ottomans and the bistro table and save space in your garden or take them with you on a day trip at the beach.

FEATURES

- Charcoal e-coated steel frame.
- 1 x side table.
- 2 x armchairs.
- Machine Rattan.
- Reclining chairs.
- Folding chairs.
- Folding Rattan table.

FLOORPLAN



ELEMENTS

ARMCHAIR	OTTOMAN	TILE SIDE TABLE	FOLDING CHAIR	OTTOMAN	WICKER SIDE TABLE
W72 x D56 x H98cm	W54 x D45 x H34.5cm	W60 x D60 x H60cm	W82 x D52 x H97cm	W53.5 x D52 x H36.5cm	W45 x D45 x H45cm



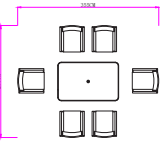



COLOUR OPTIONS

FRAME	TABLE TOPS	RATTAN	
			
CHARCOAL	TILE	WICKER	GREY

CANDOSA WICKER OVERVIEW

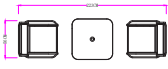


COMPONENTS

CANDOSA WICKER 7PC DINING SET

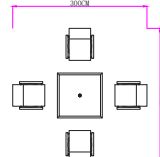


QTY	DESCRIPTION	DIMENSIONS
4	Armchairs	W72 x D65 x H108cm
1	Swivel Chairs	W72 x D65 x H108cm
1	Dining Table	W167 x D97 x H71cm

CANDOSA WICKER 3PC BAR SET

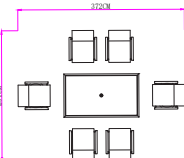


QTY	DESCRIPTION	DIMENSIONS
2	Armchairs	W58.5 x D56 x H99cm
1	Table	W61 x D61 x H84cm

CANDOSA WICKER 5PC DINING SET

QTY	DESCRIPTION	DIMENSIONS
1	Swivel Chairs	W72 x D65 x H108cm
1	Dining Table	W100 x D100 x H72cm

CANDOSA E-COATED PADDED SUNLOUNGER

QTY	DESCRIPTION	DIMENSIONS
6	Armchairs	W66 x D62 x H94cm
1	Table	W152.5 x D96.5 x H72cm

CANDOSA WICKER 5PC PADDED SET






QTY	DESCRIPTION	DIMENSIONS
4	Armchairs	W72 x D56 x H98cm
1	Ottomans	W54 x D45 x H34.5cm
1	Table	W60 x D60 x H60cm

CANDOSA WICKER 5PC FOLDING RELAXER SET






QTY	DESCRIPTION	DIMENSIONS
2	Folding Chairs	W82 x D52 x H97cm
2	Ottomans	W53.5 x D52 x H36.5cm
1	Table	W45 x D45 x H45cm

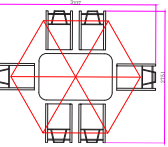


CANDOSA WICKER 3PC BISTRO SET





QTY	DESCRIPTION	DIMENSIONS
2	Armchairs	W66 x D61 x H83cm
1	Table	Dia. 42 x H50cm

CANDOSA WICKER 7PC PADDED ADJUSTABLE DINING SET

QTY	DESCRIPTION	DIMENSIONS
6	Armchairs	W72 x D56 x H98cm
1	Table	W150 x D90 x H72cm



Innovators International

Great furniture to relax in

Innovators has been a key supplier to the garden and DIY trades for over 30 years.

The 'Innovators International' brand name is recognized throughout the trade for offering quality, innovative products at superb prices.

We were the original mixed container specialist and have always 'led while others followed'. Our reputation has been built on product and service innovation.

We always listen to our customer's requirements, responding to their individual needs in a timely, accurate and innovative manner. We have co-operated with our partner factories for many years and have established a reliable and quality manufacturing base.

For 2023, we are able to offer a superb range of products which have been designed in accordance with current fashion and lifestyle trends, whilst incorporating the logistical requirements of our customers. The overall ambiance that we are trying to create is one of simplicity. Our ranges are manufactured to ensure that minimal maintenance is required in keeping with modern living.

Innovators International is proud to be an accredited member of a number of trade organisations, ensuring that all our factories meet UK/EU ethical and environmental standards.

How to order

For more information on the complete Innovators collection and how to place an order please contact your sales representative, alternatively:



Send us an email
office@innovators-international.co.uk



Call us on
0208 736 2700



Visit our website
www.innovators-international.co.uk



facebook.com/Innovators-International-Ltd



instagram.com/innovators.international/

Innovators Terms of Warranty

PLEASE KEEP THIS SHEET WITH YOUR PROOF OF PURCHASE WARRANTY CLAIMS CAN ONLY BE PROCESSED WITH A VALID RECEIPT OR PROOF OF PURCHASE

SHOULD YOU HAVE ANY QUERIES ABOUT YOUR FURNITURE YOUR FIRST POINT OF CONTACT SHOULD BE THE RETAILER FROM WHOM YOU PURCHASED YOUR PRODUCT.

TERMS OF WARRANTY - This warranty covers the product for its intended use only - The warranty will be null and void if the product is used for any other purpose than originally intended, or if it is altered, modified or repaired by a third party. The warranty is in effect for a period of 24 months beginning from the date of sale/invoice to the original retail purchaser. (With exception to our exclusive Winawood range tm where we offer a 36 month warranty period)

Any claim must be reported in writing to Innovators International Ltd who will take reasonable steps to either suitably repair the product or if this is not possible, replace or refund the item. All claims will be subject to scrutiny and inspection from our own experts. The decision to be repair or replace the item will be made by Innovators International Ltd.

When reporting any claim Innovators International Ltd will require proof of purchase and images to support the reported issue.

Any damaged product must be reported within 14 days of purchase to the retailer. Or within a 4 month period of sale to the retailer.

In order to get the very best performance from your furniture we have listed and recommend the following.

GENERAL - UK & EUROPE

- Garden Furniture should not be covered when damp and not in use as this traps moisture and can cause mould to develop, we recommend that a cover should be used on dry items only and certainly not over cushions. (Cushions should be stored in a separate sealed bag).
- Certain types of furniture can be left outside throughout the year. Please discuss this with your retailer prior to purchase. However, if you wish to store the furniture inside please ensure it is completely dry before storing it. Furniture stored away when damp or stored in damp conditions can develop mould.
- If using a parasol with your furniture you must always ensure you use a suitably weighted base, this is especially important when using glass top tables.
- When a parasol is not in use or when it is windy the parasol should be removed, failure to do so can lead to damage to your furniture and this warranty becomes null and void.
- Each piece of Innovators furniture has been thoroughly tested against most weather conditions and can withstand everyday use
- If the furniture you have purchased is foldable each piece should fold easily, please do not use extreme force to fold furniture
- It is recommended not to sit on Innovators furniture whilst wearing sun cream/sunblock/self-tanning or body lotions. We recommend a towel be placed upon the furniture to stop the creams/lotions reacting with the coatings on the furniture
- Clean up spilt drinks as quickly as possible with an absorbent cloth
- Remove grease or any other dirt as quickly as possible with warm soapy water. Rinse with lukewarm water to prevent stains
- Do not jet wash any of our furniture as this can cause damage to material and coatings (with exception to the Winawood tm range)

WINAWOOD™ UK AND EUROPE

- Winawood, the zero-maintenance outdoor furniture you've been looking for.
- Combining the latest manufacturing techniques and using both new and recycled polymer materials, Innovators international ltd. have successfully produced a range of outdoor furniture that combines the appearance of wood (including a natural wood grain effect) with the durability and maintenance characteristics of man-made items.
- The colour and grain is not only visible on the surface but is embedded through the material. It's the same colour all the way through, just like real wood!
- Winawood is not painted, Winawood will never need to be recoloured!
- The colour is encased in the polymer material. Sand the top layer of any item and you will find the same colour underneath the visible surface. All of our designs are patented and exclusive.
- Supplied with a 3 year limited guarantee. Each bench comes with a small sanding block for easy maintenance.
- To clean use a power hose and just wash the product and leave to dry or wipe down, no cleaning material is required.

WOOD - UK & EUROPE

- The high oil content of wood means it is ideally suited to the UK's changeable climate
- Wood will naturally develop splits, known as end grain cracking, as it dries out through the season, this will be particularly visible on the ends of parts such as arm rests and edges of tables. This is not a fault but a naturally occurring process.
- If left untreated your furniture will weather to a silvery grey finish, if you wish to maintain the original colour we recommend treating the item every year, your retailer should be able to recommend the correct product.
- Wood cleaner can be used at the beginning and end of the season to remove any build up of dirt on your furniture, carefully follow the instructions on the back of the bottle.
- Once clean your furniture will benefit from a light sanding to remove any colour differences which have developed before the wood oil is applied.
- Wood oil should be applied to the underside of furniture as well as visible parts, any excess oil should be removed with a dry cloth.
- Once a year we advise that you tighten the fittings on your furniture as they can loosen as the wood breathes.
- Do not jet spray the furniture as this can damage the wood.

CUSHIONS - UK & EUROPE

- Store your cushions in the dry when not in use.
- If the cushions get wet ensure they are completely dry before storing away.
- Small spillages can be cleaned using soapy water and a clean cloth before leaving the cushion to dry.
- Removable covers have cleaning instructions on the cushion tag and these must be followed. After cleaning pull back into shape before being left to dry.
- Cushions will eventually fade in the sunshine, the chemicals that make up the colours within the fabric are broken down by ultra-violet light that is present in the sunshine, this is a natural process and is not covered by the guarantee or warranty.

CERAMIC TABLES - UK ONLY

- Ceramic table tops are made by bonding a layer of ceramic onto a lightweight aluminium honeycomb structure.
- Do not place hot dishes directly onto the ceramic and ensure spillages are cleaned away quickly with a clean damp cloth.
- Do not jet spray the tables as this can damage the table tops.

RATTAN - UK & EUROPE

- Rattan products are made by weaving durable resin weave onto a lightweight aluminium frame.
- To clean your rattan furniture use warm soapy water and a clean cloth and rinse with lukewarm water.
- Do not place hot dishes directly onto the glass table top and ensure spillages are cleaned away quickly with a clean damp cloth.
- Do not jet spray the furniture as this can damage the weave

GLASS - UK & EUROPE

- Unfortunately glass is not covered by our warranty.
- The glass that accompanies our tables is toughened safety glass. It is either 5mm or 8mm thick with chamfered or rounded edges. This glass is similar to the glass that is used in cars or house windows. This glass will only shatter or crack if impacted by a heavy object or if the parasol is left in the table and the wind takes the parasol which may cause damage to the glass.
- Our glass does not shatter or crack due to the heat.

CAST ALUMINIUM AND ALUMINIUM - UK & EUROPE

- Cast Aluminium furniture requires very little maintenance however your furniture will benefit from occasional cleaning with warm soapy water, a clean cloth and then rinse with lukewarm water.
- Do not place hot dishes directly onto table tops and ensure spillages are cleaned away quickly with a clean damp cloth.
- Do not jet spray your furniture as this can cause damage.

SPRAYSTONE TABLES • UK & EUROPE

- Sprystone tabletops have a topcoat made of plastic, not stone. The coating is hard and extremely durable.
- To maintain remove sand or dirt with a soft brush to avoid scratching.
- Clean table with lukewarm water and a mild detergent then rinse with lukewarm water to prevent any potential stains from the cleaning agent.
- To prolong the life of your table the following should be avoided as they can cause permanent damage to the table.
- Do not cover the table with a plastic cover, this can cause permanent stains and mould.
- Do not use aggressive cleaning products as this may cause irremovable stains and damage the surface.
- Do not place objects on the table for long periods of time.
- Do not use plastic placemats on the table.
- Do not pile the table with disproportionate weight.
- Do not place hot plates or candles on the table as these can cause permanent stains.
- Clean up spilled drinks as quickly as possible with a damp cloth before they are absorbed by the stone.
- Remove any grease as quickly as possible with warm water and mild detergent. Rinse with lukewarm water to prevent staining.

PARASOLS - UK & EUROPE

- Parasols should only be used as a sunshade and not as an umbrella
- Our parasols are showerproof and not waterproof
- Parasols will fade in the sunshine, the chemicals that make up the colours within the polyester fabric are broken down by ultraviolet light that is present in the sunshine, and this is a natural process and is not covered by the guarantee or warranty. We do try to counteract this process by putting a UV resistant additive in to the fabric however this only protects the fabric for a certain amount of time.
- Always use a suitable weighted base with a parasol
- Do not leave parasol up or unattended when not in use or if there is the slightest chance of wind, failure to do so will cause damage to your furniture.

PERGOLAS - UK & EUROPE

- Pergolas should only be used as a sunshade
- The lining on all pergolas are waterproof however we do not recommend using them as a shelter from the rain they are by design a shading product only
- Pergola canopies will fade in the sunshine, the chemicals that make up the colours within the polyester fabric are broken down by ultraviolet light that is present in the sunshine, this is a natural process and is not covered by the guarantee or warranty. We do try to counteract this process by putting a UV resistant additive in to the fabric however this only protects the fabric for a certain amount of time.
- Make sure all pergolas are fixed firmly to the ground or have a suitable weighted base to hold them in place. If not secured or weighted down they will move position if there is the slightest chance of wind.
- Please be aware that Pergolas/Pavilions are not permanent structures and we recommend removing the canopy between October and March. These are the months when the weather will cause damage to the fabric.

ROPE – UK & EUROPE

- Rope is made of thermoplastic polypropylene fibres and has been developed to meet all standard requirements for outdoor furniture. The rope is UV resistant, colour fast and water and mould resistant. It is also resistant to temperature variations from -40 to +80 degrees Celsius.
- We recommend that outdoor rope products are cleaned using a fabric and upholstery protector, following the instructions detailed on the label. Do not abrade the rope with excessive scrubbing or by using a hard brush. Please use a soft cloth and allow to air-dry. Never use a high-pressure hose on rope.

ACCESSORY ITEMS

Fire Pits & Heaters

All instructions used for a fire pit must be adhered to, all safety measures must be followed. Remember to ensure children are not left alone near any fire pit or heating product. It is best to cover the item when not in use.

GUARANTEE CONDITIONS

The conditions of guarantee only apply to material and/or construction faults already present at delivery. Excluded are defects arising from wrong or improper use of the furniture, such as abnormal loads, damage by corrosive substances, incorrect maintenance, repair by non - experts, incorrect assembly, discolouration due to covering furniture as well as damages by not using or incorrect usage of the instructions.

Wood has a conditional guarantee of two years on material and construction faults. Textiles have a conditional guarantee of one year on weaving faults, loose seams

Parasols and Pergolas have a conditional guarantee of two years on material and construction faults for parasol frame, weaving faults, loose seams in the fabric

Cast Aluminium has a conditional guarantee of two years on material and construction faults Aluminium has a conditional guarantee of two years on material and construction faults Rattan has a conditional guarantee of two years on material and construction faults

Rope has a conditional guarantee of two years on material and construction faults.

Notes

This image shows a full page of blank white paper with horizontal ruling lines. The lines are evenly spaced and run across the width of the page, typical of notebook paper or a document template. There are no margins, text, or other markings present.



office@innovators-international.co.uk



0208 736 2700



www.innovators-international.co.uk

innovators
— international —