



TALKING OF PLANTS

Gifts and Homeware Guide



2022



Sku: TT-SS22-EE

Plant and garden-themed gifts
and homeware.

Designed by artist and RHS-
qualified gardener, Hannah
Weeks.

Proudly made in England.

Be sure to follow Talking of Plants on social media @talkingofplants



new items



STRING HOLDERS

Garden string holders made from sustainably sourced poplar plywood. Ten metres of garden twine reveals a gorgeous hanging ornament.

Pages 3-5

COTTON TEA TOWELS

Beautifully illustrated, machine washable cotton tea towels with hanging loop. Made in Suffolk from start to finish.

Page 9-10



ORGANIC COTTON CLOTHING

Circular, organic cotton clothing. Plastic-free, plant-themed t-shirts and jumpers made using renewable energy.

Pages 19-28



SUSTAINABLY FORESTED WOOD

Sku: ST-DG-PNK

GARDEN STRING HOLDERS

Delightful wooden string holders that reveal an adorable hanging ornament. Perfect for tying in plants and general use around the garden. A must-have for any potting shed, utility or craft room.

- Original designs by Hannah Weeks
- Printed in full colour on both sides
- Made from sustainably sourced, laser-cut, 6mm Poplar plywood*
- Each holder includes 10m of biodegradable, Scottish-made, Nutscene® jute twine

*Given wood is a natural material, the colours and grain may vary slightly from piece-to-piece.

Talk to me about customising this product

garden string holders

Wholesale price from £4.00 / RRP: £12.00

Approx size: 10cm x 15cm

Choice of string colour



WHITE CAT

Meow! The perfect string holder for a cat-lover.

Sku: ST-CT-BL



SUCCULENT WELLIES

A must-have for a potting shed, utility or craft room.

Sku: ST-SW-YEL



SAUSAGE DOG

Oh by golly! A Dachshund wearing a jumper.

Sku: ST-DG-PNK



ROSE WELLIES

Sku: ST-RW-GR



TULIP WELLIES

Sku: ST-TW-GR



FERN WELLIES

Sku: ST-FW-BL



PEONY WELLIES

Sku: ST-PW-PNK



CHRISTMAS TWINE HOLDERS

A Christmas range of string holders complete with decorative bakers twine – perfect for gift wrapping! Hang on a Christmas tree or around the home once the twine is finished.

- Original designs by Hannah Weeks
- Printed in full colour on both sides
- Made from sustainably sourced, laser-cut, 6mm Poplar plywood
- Each holder includes 10m of bakers twine manufactured in Scotland by Henry Winning® from biodegradable, 100% recycled cotton

Wholesale price from £4.00 / RRP: £12.00 / Approx size: 10cm x 15cm



CHRISTMAS WHITE CAT

A mischievous moggy bundled up in Christmas lights and candy stripes.
Sku: ST-XMS-CAT



FESTIVE WELLIES

A festive take on my best-selling welly string holder, complete with friendly robin.
Sku: ST-XMS-WEL



CHRISTMAS SAUSAGE DOG

Oh, hi! An adorable dachshund in a Christmas jumper.
Sku: ST-XMS-DOG



ECO FRIENDLY FSC POPLAR

Sku: DC-ES-BL

WOODEN DECORATIONS

Succulent and flower-themed hanging wooden ornaments.

Easy-to-post gifts for gardeners and plant-lovers that make a great stocking filler at Christmas time.

- Original designs by Hannah Weeks
- Printed in full colour on both sides
- Made from sustainable, laser-cut, 3mm Poplar plywood*
- The threaded hanging cord is supplied untied so customers can choose how long they'd like it

*Given wood is a natural material, the colours and grain may vary slightly from piece-to-piece.

Let's work together on an exclusive design for your business

wooden decorations

Wholesale price from £3.20 / RRP: £7.00



PINK ROSE

This Rosa 'Boscobel' is blooming beautiful!

Approx size: 10cm x 8cm
Sku: DC-PR-PNK



PURPLE ROSE

An ideal choice for rose lovers and flower growers.

Approx size: 10cm x 7.5cm
Sku: DC-PRR-PR



ECHEVERIA SUCCULENT

Match your home to your succulent obsession.

Approx size: 10cm x 10cm
Sku: DC-ES-BL



ECHEVERIA GIBBIFLORA

Bring your succulent obsession to your decor.

Approx size: 10cm x 9cm
Sku: DC-EG-BL



SEMPERVIVUM

Wonderful for a succulent plant addict.

Approx size: 10cm x 8cm
Sku: DC-SP-GR



PINK DAHLIA

Add a pretty pop of pink to your home interior.

Approx size: 10cm x 10cm
Sku: DC-PD-PNK

wooden decorations

Wholesale price from £3.20 / RRP: £7.00



ECHEVERIA BLUE

For a fan of houseplants and succulents.

Approx size: 10cm x 8cm
Sku: DC-ECH-BL



SNOWDROPS MUG

Enjoy snowdrop season all year around.

Approx size: 8.5cm x 10cm
Sku: DC-SD-BL



ECHEVERIA ELEGANS

Succulents...a trend that's here to stay!

Approx size: 10cm x 10cm
Sku: DC-EEL-BL



ECHEVERIA RAINBOW

One for people who enjoy using colour in their home.

Approx size: 10cm x 8cm
Sku: DC-ER-PNK

Christmas tree decoration



GARDENING SANTA

A fun addition to a gardener's festive decor.

Approx size: 7cm x 10cm
Sku: DC-GS-RD

Christmas tree decoration



GARDENING MRS CLAUS

Cute Mrs Claus and her rosy cheeks.

Approx size: 7cm x 10cm
Sku: DC-GMC-RD



DESIGNED AND MADE IN SUFFOLK

Skur: TT-SS22-SP, TT-SS22-TT

COTTON TEA TOWELS

Illustrated cotton tea towels for plant and flower lovers. Made from start to finish in Suffolk.

Designed to look good when folded over a cupboard door or hung by the hanging loop.

- 100% cotton with hanging loop
- Machine washable at 30°C*
- Supplied in a printed cardboard belly band with dedicated barcodes (if required)
- Talk to me about creating a bespoke design for your brand

* Select a cool temperature during the first machine wash to prevent fading. Always wash with similar colours.

cotton tea towels

Wholesale price from £7.90 / RRP: £13.50



ECHINACCA ECHINACCA

Pink and white coneflowers displayed your way.

Sku: TT-SS22-EE



TULIPA TULIPA

Welcome the outside in for all of your kitchen tasks.

Sku: TT-SS22-TT



SUCCULENT OBSESSION

One for people with the healthiest of obsessions.

Sku: TT-SS22-SO



THE SWEETEST PEAS

This will quickly become your favourite kitchen accessory.

Sku: TT-SS22-SP



SPECIAL SPECIES

Test yourself while you're drying the dishes!

Sku: TT-SS21-SS

Go bespoke

Talk to me about creating an exclusive design for your store.

BIODEGRADABLE PRODUCT



Sku: PR-SS-KO

A4 PRINTS

Illustrated houseplant and succulent-themed prints and plant identification charts. Ready to pop into a frame of your choice.

The Special Species range includes the origin of the plant's Latin name, such as the pictured *Kalanchoe luciae*, *Oricula*.

- **Size:** A4 – 210mm x 297mm
- **Printed on** luxurious 225gsm matt paper stock
- **Presented in a clear and compostable envelope, backed with grey-board**
- **The whole product is fully recyclable - the wrapper, backing card and print itself can all be added to your compost heap**

A4 prints

A4 size: 210mm x 297mm

Wholesale price from £2.00 / RRP: £10.00



Special Species

CRASSULA PERFORATA

The string of buttons or necklace vine plant.

Sku: PR-SS-CP



Special Species

ECHEVERIA GIBBIFLORA

One of the largest hens and chicks plants.

Sku: PR-SS-EG



Special Species

KALANCHOE LUCIAE

The much-loved, intriguing paddle plant.

Sku: PR-SS-KO



Special Species

ECHEVERIA ELEGANS

A good go-to for any succulent enthusiast.

Sku: PR-SS-EE

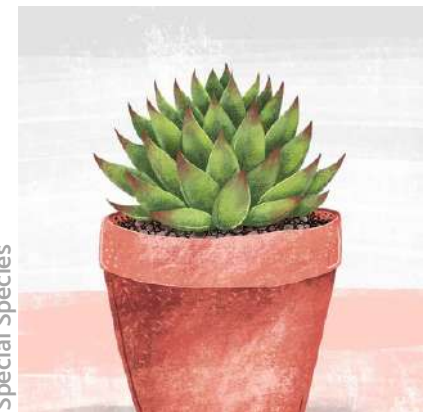


Special Species

CRASSULA PYRAMIDALIS

Also known as a Buddha's temple or pagoda jade.

Sku: PR-SS-CPY



Special Species

ECHEVERIA AGAVOIDS

An echeveria that looks like an agave!

Sku: PR-SS-EA

A4 prints

A4 size: 210mm x 297mm
Wholesale price from £2.00 / RRP: £10.00



ADROMISCHUS COOPERI

The adorably named, plover eggs plant.

Sku: PR-SS-AC



CRASSULA OVATA

Also known as a jade or money plant.

Sku: PR-SS-CO



CRASSULA OVATA "GOLLUM"

An amazing adaptation of the jade - the gollum jade.

Sku: PR-SS-COG



CRASSULA IDENT

Get to acquainted with your crassula species.

Sku: PR-ID-CRS



SEMPERVIVUM IDENT

Learn the names the many sempervivums.

Sku: PR-ID-SEM



ECHEVERIA IDENT

Just some of the species and cultivars.

Sku: PR-ID-ECH

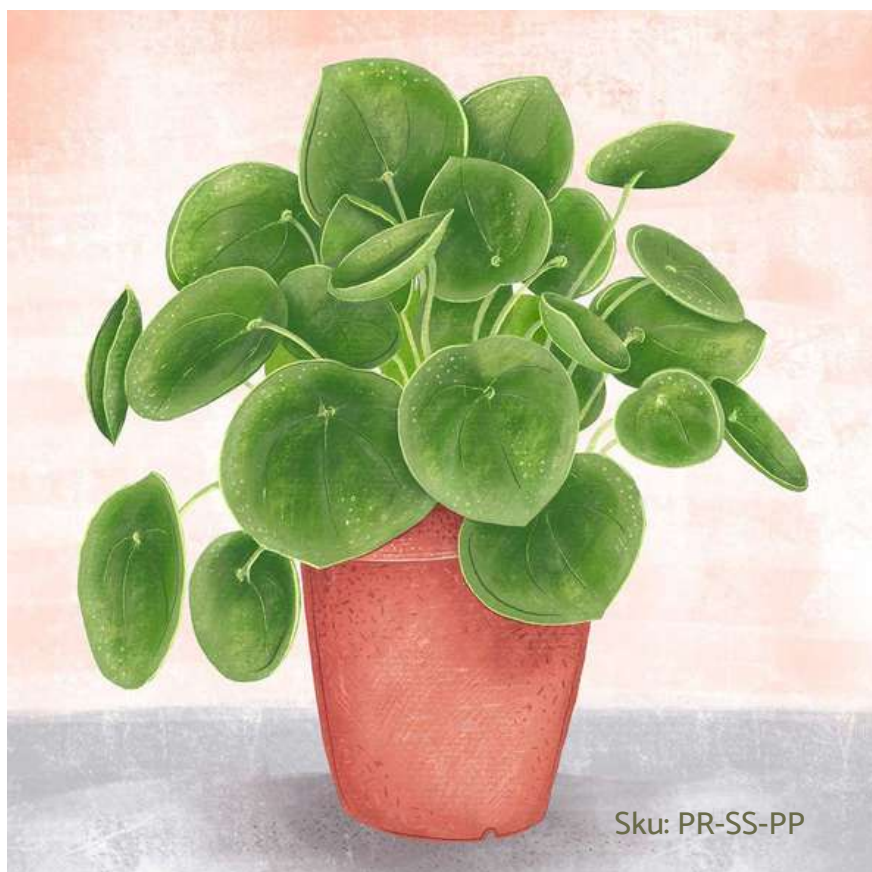


Sku: PR-ECN-PNK

COMPOSTABLE WRAPPERS



Sku: PR-ECN-WHT



Sku: PR-SS-PP

All A4 prints come with a cardboard backing board, sealed in a compostable wrapper.



"NAKED" CARDS PRINTED IN ENGLAND

GREETINGS CARDS

Beautiful, colourful, plant-themed greetings cards, perfect for flower lovers. Each card is A6 size, blank inside for your own message and supplied with an envelope.

Cards can be popped into small frames for a cost-effective, eye-catching gallery wall of mini-prints.

- Original designs by Hannah Weeks
- Card size: A6 – 105mm x 148mm
- Printed on 350gsm uncoated stock (for writing on)
- Blank inside
- Includes a white, peel-and-seal envelope
- Cards are naked and supplied without cellophane wrappers
- Proudly printed in England



BLOOMING MARVELLOUS

Featuring a perfect David Austin 'Boscobel' rose.

Sku: GC-BM-GR



LOTS OF LOVE

Nothing says lots of love like lots of roses.

Sku: GC-LOL-YEL

greetings cards

A6 size: 105mm x 148mm

Wholesale price from £0.35 / RRP: £3.00



HELLO YOU

A striking green card covered in beautiful pink roses.

Sku: GC-HY-GR



HELLO BEAUTIFUL

A riot of succulents.

Sku: GC-HB-PNK



YOU ARE LOVELY

A beautiful card featuring Rosa 'Dainty Bess' blooms.

Sku: GC-YAL-BL



OH HI CAT

Roses and cats. What's not to love?

Sku: GC-OH-GR



MIAOW

Miaow! Ideal for cat owners and flower lovers.

Sku: GC-MC-PNK



HELLO CAT

This cat says hello to everyone and now you can too.

Sku: GC-HEL-GR



THINKING OF YOU

Send to a cat lover to show them you're thinking of them.

Sku: GC-TOY-PR



JUST TO SAY

Fill someone's day with cats and flowers.

Sku: GC-JTS-BL



PREMIUM WRAPPING PAPER

GIFT WRAP SHEETS

A range of wonderfully thick wrapping papers to make presents look (almost) too good to open.

These individual sheets are printed in the UK on a luxurious, matt paper stock.

- Size - 50cm x 70cm
- 120gsm matt, uncoated paper stock
- Sheets can be sent flat or rolled
 - Flat sheets are posted flat and can be folded into quarters (or left unfolded)
 - Rolled sheets are sent in multiples of 25 inside postal tubes
- All Talking of Plants wrapping paper is glitter-free and recyclable

gift wrap sheets

Size: 50cm x 70cm

Wholesale price from £0.70 / RRP: £2.50



ROSE PRINT BLUE

Perfect for adding an extra layer of luxury to a present.

Sku: GW-RP-BL



ROSE PRINT YELLOW

Great for adding an extra pop of colour to a gift.

Sku: GW-RP-YEL



SUCCULENT PRINT PINK

Add a playful look to your specially chosen pressies.

Sku: GW-SP-PNK



SUCCULENT PRINT GREY

A stylish paper that adds a unique finish to gifting.

Sku: GW-SP-GY



CATS AND ROSES PURPLE

The purrfect gift wrapping choice for cat owners.

Sku: GW-CAT-PR



CATS AND ROSES GREEN

Cats and roses... the cutest combo!

Sku: GW-CAT-GR



Sku: WJ-DRM-NY

PRINTED IN THE UK

ORGANIC COTTON CLOTHING

Say hello to beautiful, sustainable clothing from Talking of Plants. A range of thoughtfully designed plant and flower-themed t-shirt and sweatshirts made 100% from organic cotton. There's something for everyone!

Men's sizes: XS-XXL

Women's sizes: 8-18

- GOTS certified organic cotton
- Wash cool and hang dry
- GM free. Not tested on animals. Does not contain animal-derived products
- Made in a renewable energy powered factory*
- Printed-on demand, in the UK using low waste printing technology
- Fully recyclable, circular clothing – designed to be returned once worn out, re-milled and never enter a landfill

*Garments are constructed in India before being printed and finished in England.

Sku: MJ-DRM-NY



MEN'S CREW NECK JUMPER



THE DREAMER

Sku: MJ-DRM-NY

Wholesale price: from £17.45

Retail price: £40.00



THE STAR

Sku: MJ-STR-GY

Wholesale price: from £17.45

Retail price: £40.00

Men's crew-neck jumpers offer a flattering fit in soft organic cotton. Ideal for layering over a Talking of Plants tee or for wearing under a jacket.

Sku: MTS-MAG-PNK



MEN'S TSHIRT



Sku: MTS-MAG-RST



Sku: MTS-STR-PR



Sku: MTS-STR-BL

Men's classic t-shirts feature a crew neckline and straight hem offering a casual fit.

Main picture: The Magnus pink Echinacea tee available in pale pink or rust.



THE STAR

Sku: MTS-STR-PR/GY/BL



THE MAGNUS

Sku: MTS-MAG-PNK/RST



men's classic t-shirts

Wholesale price from £9.93
RRP: £25.00



THE WARRIOR

Sku: MTS-WAR-WH/GY/PNK



THE MELBA

Sku: MTS-MEL-RST/PNK



THE DREAMER

Sku: MTS-DRM-NY/PR



THE HUE

Sku: MTS-HUE-BL/PNK



THE STANDARD

Sku: MTS-STD-BL/PNK



THE BOMBUS

Sku: MTS-BOM-WH/MU/BL





Sku: WCT-BOM-WH

CLASSIC TSHIRT



Sku: WCT-BOM-WH



Sku: WCT-BOM-PNK



Sku: WCT-BOM-MU

Women's classic t-shirts feature a traditional shape with a crew neckline. Perfect for pairing with jeans or leggings.

Main picture: The Bombus Bees need trees tee available in white, pink and mustard.

TIE SIDE TEE



Sku: WTS-GUP-MV



Sku: WTS-GUP-GR



Women's tie-side tees feature a versatile tie-side hem, cuffed sleeve detail and an oversized fit. Designed to be worn in more than one way - loose, tied or tucked in.

The Glow Up
Sku: WTS-GUP-BL



Sku: WBT-WAR-WH

BOXY TSHIRT



Sku: WBT-WAR-WH



Sku: WBT-WAR-GY

Women's boxy tees have an oversized fit that gives a timeless look, ideal for pairing with trousers, shorts or leggings.

As with all Talking of Plants clothing, this style is made from 100% organic cotton in carbon-neutral premises.

Main picture: The Warrior native ladybirds t-shirt.

Available in white and grey marl.

Classic t-shirt



THE BOMBUS

Sku: WCT-BOM-WH/PNK/MU



Tie-side t-shirt



THE MAGNUS

Sku: WTS-MAG-WH/MV



women's t-shirts

Wholesale price from £9.93
RRP: £25.00

Tie-side t-shirt



THE GLOW UP

Sku: WTS-GUP-MV/GR/BL



Tie-side t-shirt



THE BOOBEGS

Sku: WTS-BOO-WH/GR



Tie-side t-shirt



THE MELBA

Sku: WTS-MEL-WH/BL/MV



Boxy t-shirt



THE HUG

Sku: WBT-HUE-WH/BL



Boxy t-shirt



THE STAR

Sku: WBT-STR-WH/BL/GY



Boxy t-shirt



THE WARRIOR

Sku: WBT-WAR-WH/GY





WOMEN'S CREW JUMPER



THE DREAMER

Sku: WJ-DRM-NY/BL

Wholesale price: from £17.45

Retail price: £40.00



Women's crew-neck jumpers are cut in a shape that is designed to flatter.

All Talking of Plants clothes are made from 100% organic cotton and are printed in England.

They are dyed with vegan-friendly inks in a solar-powered factory.



Women's boxy sweaters feature an effortless, relaxed fit, cuffed sleeves and a raw, cropped hem. They pair perfectly with jeans, shorts or activewear for an easy weekend look.

Sku: WBS-BES-GR

BOXY SWEATER



THE BESS

Sku: WBS-BES-GR/BL

Wholesale price: from £15.10

Retail price: £40.00



THE MAGNUS

Sku: WBS-MAG-GR/MV

Wholesale price: from £15.10

Retail price: £40.00



THE MAGNUS

Sku: WBS-HUE-GR/MV

Wholesale price: from £15.10

Retail price: £40.00





T-shirt: The Glow Up / Sku: WTS-GUP-BL





TALKING OF PLANTS

I am Hannah Weeks, Illustrator and RHS-qualified Gardener. Talking of Plants was born out of a desire to combine these two passions.

I have a genuine love of plants and gardens, so when you choose to work with me you can be confident in the products themselves and the inspiration behind the designs.

Established in 2021, you are joining me at the best time – right at the start of my business evolution.

I'm so grateful that you have taken the time to get to know my range, and I look forward to working together soon.

Reasons to work with me

- It's just me, which means I have complete control over every aspect of my business.
- I will be the person you are talking to whenever you enquire or place an order.
- There are no sales agents or third-parties to liaise with.
- I can customise any product or create completely bespoke designs for your business.
- I am focused on remaining a sustainability-led, eco-friendly operation, completely free of any single use plastic.
- I am RHS Level 2 qualified



LET'S TALK!

services & info

Bespoke products

If you would like a different version of something from my range or would like me to create something completely exclusive, I would love to fulfil this for you.

With over a decade of experience in drawing for businesses and individuals, I am able to work within your budget to design something entirely bespoke. Alternatively, I can customise certain products with your company name, colours and logo.

Please get in touch to discuss your requirements.

Tel. 07823 885 921

Email. hannah@talkingofplants.com

Exclusivity

Talk to me if you would like to stock an existing product or range of products exclusively.

RRP

The recommended retail prices indicated in this brochure are in line with the prices that I sell my products for on my website.

Images and descriptions

Please do not copy the photos, images or descriptions on talkingofplants.com (or any of my social media profiles) onto your own website.

If you would like to use my images and descriptions, please get in touch.

eco credentials

Circular economy

My garments are made in an eco-friendly factory in India, close to where the raw cotton is grown. The items are then printed and finished on the Isle of Wight by Teemill Tech Ltd.

Taking advantage of a circular clothing economy, all items can be returned to Teemill and remade – ensuring they never enter a landfill.

Sustainable products

- Art Prints are printed in England onto matte paper. They are presented inside a biodegradable envelope which has been produced in the UK (that has a label on it stating that it is compostable). The whole product (including the grey-board backing which has been made from 100% recycled materials) is fully recyclable.
- Tea Towels are printed in Suffolk onto 100% cotton by Star Editions Ltd, a climate positive manufacturer. Tea Towels are presented in a card belly band which is recyclable.
- Wooden items are printed in England onto FSC poplar plywood. Garden twine hangers include organic jute twine from Nutscene® and my Christmas String Holders include 100% recycled cotton baker's twine from Henry Winning®. Both are manufactured in Scotland.
- Greetings Cards are printed in England onto matt paper-stock. They are naked cards (meaning they are not packaged). Cards are supplied with a coordinating envelope. The card and envelope are fully recyclable.
- Gift wrap sheets are printed in England onto matt paper stock (which is fully recyclable).
- I never use single-use plastic in any of my packaging. Boxes are sealed with paper tape and in many cases my packaging is made entirely from recycled materials.



COMPLETE RANGE LIST . SKU CODES

Garden string holders

Use the below format with your choice of string colour:

BL = Blue
YEL = Yellow
PNK = Pink
GR = Green

Fern wellies ST-FW-BL/YEL/PNK/GR
Peony wellies ST-PW-BL/YEL/PNK/GR
Succulent wellies ST-SW-BL/YEL/PNK/GR
Tulip wellies ST-TW-BL/YEL/PNK/GR
Rose wellies ST-RW-BL/YEL/PNK/GR
Sausage dog ST-DG-BL/YEL/PNK/GR
White cat ST-CT-BL/YEL/PNK/GR

Christmas twine holders

Christmas white cat ST-XMS-CAT (Christmas)
Festive wellies ST-XMS-WEL (Christmas)
Christmas sausage dog ST-XMS-DOG (Christmas)

Wooden decorations

Pink rose DC-PR-PNK
Purple rose DC-PRR-PR
Echeveria succulent DC-ES-BL
Echeveria gibbiflora DC-EG-BL
Sempervivum DC-SP-GR
Pink dahlia DC-PD-PNK
Echeveria blue DC-ECH-BL
Snowdrops mug DC-SD-BL
Echeveria elegans DC-EE-BL
Echeveria rainbow DC-ER-PNK
Gardening Santa DC-GS-RD (Christmas)
Gardening Mrs Claus DC-GMS-RD (Christmas)

Cotton tea towels

Echinacea echinacea TT-SS22-EE
Tulipa tulipa TT-SS22-TT
Succulent obsession TT-SS22-SO
The sweetest peas TT-SS22-SP
Special species TT-SS21-SS

A4 prints

Crassula perorata PR-SS-CP
Echeveria gibbiflora PR-SS-EG
Kalanchoe lucie oricula PR-SS-KO
Echeveria elegans PR-SS-EE
Crassula pyramidalis PR-SS-CPY
Andromischus cooperi PR-SS-AC
Crassula ovata PR-SS-CO
Crassula ovata 'gollum' PR-SS-COG
Pilea peperomioides PR-SS-PP
Crassula identification PR-ID-CRS
Sempervivum identification PR-ID-SEM
Echeveria identification PR-ID-ECH
Echinacea (pink on lilac) PR-ECN-PNK
Echinacea (white on grey) PR-ECN-WHT

Greetings cards

Blooming marvellous roses GC-BM-GR
Lots of love roses GC-LOL-YEL
You are lovely roses GC-YAL-BL
Hello beautiful succulents GC-HB-PNK
Hello you roses GC-HY-GR
Just to say GC-JTS-BL
Thinking of you GC-TOY-PR
Hello cat GC-HEL-GR
Oh hi cat GC-OH-GR
Miaow GC-MC-PNK

Gift wrap sheets

Rose print (blue) GW-RP-BL
Rose print (yellow) GW-RP-YEL
Succulent print (grey) GW-SP-GY
Succulent print (pink) GW-SP-PNK
Cats and roses (green) GW-CAT-GR
Cats and roses (purple) GW-CAT-PR

Men's classic t-shirts

The Star classic tee (grey marl) MTS-STR-GY
The Star classic tee (purple) MTS-STR-PR
The Star classic tee (stone blue) MTS-STR-BL
The Magnus classic tee (pink) MTS-MAG-PNK
The Magnus classic tee (rust) MTS-MAG-RST
The Warrior classic tee (white) MTS-WAR-WH
The Warrior classic tee (grey marl) MTS-WAR-GY
The Warrior classic tee (pink) MTS-WAR-PNK
The Melba classic tee (pink) MTS-MEL-PNK
The Melba classic tee (rust) MTS-MEL-RST
The Dreamer classic tee (navy) MTS-DRM-NY
The Dreamer classic tee (purple) MTS-DRM-PR
The Hue classic tee (stone blue) MTS-HUE-BL
The Hue classic tee (pink) MTS-HUE-PNK
The Standard classic tee (stone blue) MTS-STD-BL
The Standard classic tee (pink) MTS-STD-PNK
The Bombus classic tee (white) MTS-BOM-WH
The Bombus classic tee (mustard) MTS-BOM-MU
The Bombus classic tee (bright blue) MTS-BOM-BL

Men's crew jumpers

The Dreamer crew-neck (navy) MJ-DRM-NY
The Star crew-neck (grey marl) MJ-STR-GY

Women's classic t-shirts

The Bombus classic tee (white) WCT-BOM-WH
The Bombus classic tee (pink) WCT-BOM-PNK
The Bombus classic tee (mustard) WCT-BOM-MU

Women's tie-side t-shirts

The Magnus tie-side tee (white) WTS-MAG-WH
The Magnus tie-side tee (mauve) WTS-MAG-MV
The Glow Up tie-side tee (mauve) WTS-GUP-MV
The Glow Up tie-side tee (sage green) WTS-GUP-GR
The Glow Up tie-side tee (stone blue) WTS-GUP-BL
The Boobees tie-side tee (white) WTS-BOO-WH
The Boobees tie-side tee (sage green) WTS-BOO-GR
The Melba tie-side tee (white) WTS-MEL-WH
The Melba tie-side tee (stone blue) WTS-MEL-BL
The Melba tie-side tee (mauve) WTS-MEL-MV

Women's boxy t-shirts

The Hue boxy tee (white) WBT-HUE-WH
The Hue boxy tee (stone blue) WBT-HUE-BL
The Star boxy tee (white) WBT-STR-WH
The Star boxy tee (stone blue) WBT-STR-BL
The Star boxy tee (grey marl) WBT-STR-GY
The Warrior boxy tee (white) WBT-WAR-WH
The Warrior boxy tee (grey marl) WBT-WAR-GY

Women's crew jumpers

The Dreamer crew-neck (navy) WJ-DRM-NY
The Dreamer crew-neck (stone blue) WJ-DRM-BL

Women's boxy jumpers

The Bess boxy (stone blue) WBS-BES-BL
The Bess boxy (sage green) WBS-BES-GR
The Magnus boxy (mauve) WBS-MAG-MV
The Magnus boxy (sage green) WBS-MAG-GR
The Hue boxy (mauve) WBS-HUE-MV
The Hue boxy (sage green) WBS-HUE-GR

order terms

Minimum Order Quantity (MOQ)

The minimum order quantity is fifty units. Orders can combine different product types, but the product-specific MOQ for each product type must be met.

Product-specific MOQs

String Holders

Incl. garden string and Christmas string holders (6mm poplar ply)

- Wellies MOQ x100 (in multiples of x10/design). Order can be split across designs.
- Cats and Dogs MOQ x104 (in multiples of x8/design). Order can be split across designs.

Wooden decorations

Incl. Christmas decorations (3mm poplar ply)

- MOQ x108 (in multiples of x12/design). Order can be split across designs.

Tea towels

- MOQ x12/design. Larger orders can be split across designs in multiples of x12/design.

A4 prints

- MOQ x50. Order can be split across designs in any quantity.

Greetings cards

- MOQ x100. Order can be split across designs in equal quantities (e.g. x10 each of x10 different designs).

Gift wrap sheets

- MOQ x150. Order can be split across designs in equal quantities (e.g. x25 each of x6 different designs).

Organic cotton clothing

Incl. all men's and women's t-shirts and jumpers

- MOQ x50. Order can be split across designs in any colour, in any quantity, in any size.

Price breaks

Wellies string holders

- x500 | x1000

Cats and Dogs string holders

- x504 | x1000

Wooden decorations

- x504 | x1008

Tea towels

- x504

A4 prints

- x100 | x500

Greetings cards

- x200 | x500 | x1000 | x2000

Gift wrap sheets

- x300 | x600 | x1200

Organic cotton clothing

- x100 | x150 | x500

Delivery

Delivery costs will be calculated upon request of your order. This will be detailed on an emailed invoice.

How to order

To place an order or ask about anything in the Talking of Plants range, please email or give me a call. Please state the SKU codes and quantity of the products you would like to order and the delivery address. Please ensure your order meets my minimum quantities.

I will email you a proforma invoice detailing your order, including delivery and lead times.

Payment

Payment is to be made within 30 days of receipt of the proforma invoice. Orders can be paid for by Bacs or via Paypal. Paypal payments will incur an additional fee (2.9% plus £0.30).

Orders will not be actioned until payment has been made in full.

Lead times

Products are printed and made to order, and some are finished by hand. Lead times differ between products, ranging from between 1-6 weeks (plus delivery time). Specific lead times will be calculated upon request of the order. This will be detailed on an emailed invoice.

Please tell me if you require your order by a certain date and I will do my best to accommodate this.

Returns

I do not offer a sale or return policy. In the unlikely event you are disappointed with the quality of a product or if the item is different to what you expected, please get in touch to discuss.



TALKING OF PLANTS...

LET'S TALK!

@talkingofplants

