

**M** HEBEI MINMETALS CO.,LTD.

**METAL**  **TEC**®



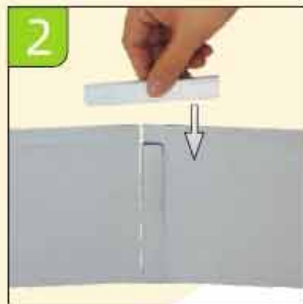
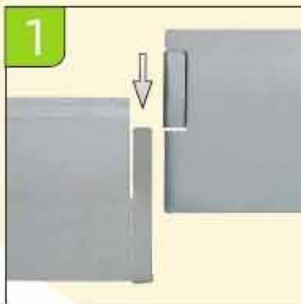
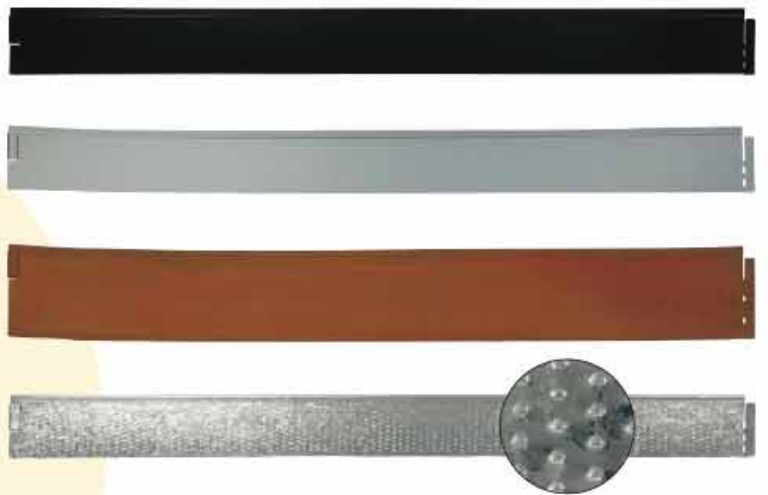
# LAWN EDGE





### Lawn Edge With Clips

- The Lawn edge separates the area to prevent plant roots from growing out of the garden.
- The soft lawn edging shape can be bent, whether straight, square or round.
- The upper edge is folded which can protect you and your children playing from injury.
- The plug-in system can make the individual lawn edge connected to each other without any screw
- One more small clip will be also fixed on closed lawn edges to make it more stable.



Two-end display

### Specifications

Item	Length(mm)	Height(mm)	Finish
LEC1195130	1195	130	Galvanized Powder Coated Corten Steel
LEP1000100	1000	100	
LET1180125	1180	125	
LEC1180195	1180	195	

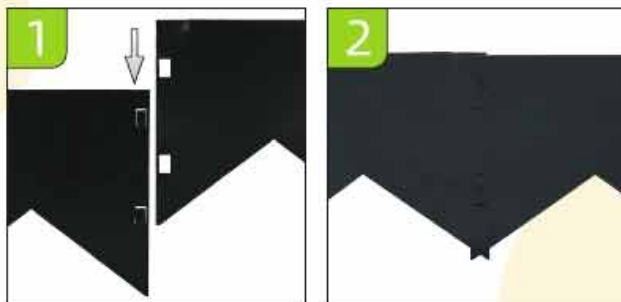
### Colour





## Lawn Edge With Large Spikes

- The lawn edge was made of high quality galvanized metal and then powder coated. It is very rust resistant, strong and guarantees a carefree and durable use.
- They are widely used in outdoor gardens, courtyards and forestry etc.








Two-end display

### Specifications

Item	Length(mm)	Height(mm)	Finish
LEB5001	1000	175	Galvanized Powder Coated Corten Steel

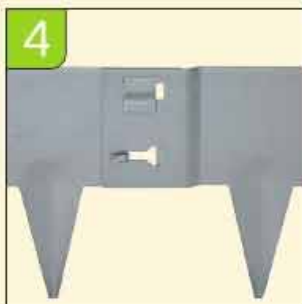
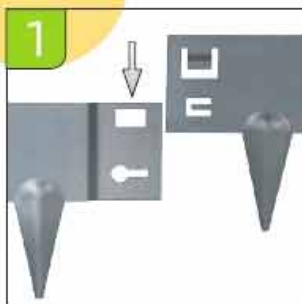
### Colour

	Galvanized		Rust
	RAL 6005		RAL 9005
	RAL 7016		



### Lawn Edge With Spikes

- The lawn edge with spike give your garden landscape a charming and individual character. It creates clean lines and provide a natural, rustic look.
- They are widely used in outdoor gardens, courtyards and forestry etc.
- The bottom spikes will make you easily hammer it into ground.
- Available in 3 kinds surface treatments, Galvanized, Black/Green powder coated and Corten steel, guarantees good ductility and stability.



### Specifications

Item	Length(mm)	Height(mm)	Finish
LES001	1060	160	Galvanized Powder Coated Corten Steel
LES002	1060	240	
LES003	1060	400	
LES004	1060	181	
LES005	1060	207	



Two-end display



**METALTEC**<sup>®</sup>



Join Edging  
Secure with Locking Tab

Self Staking  
Integrated Stakes

Edging Installed on a Cure



**Specifications**

Lengths: 39-1/2 feet  
Heights: 4 inches

**Colour**

- Galvanized
- Rust
- RAL 6005
- RAL 9005
- RAL 7016

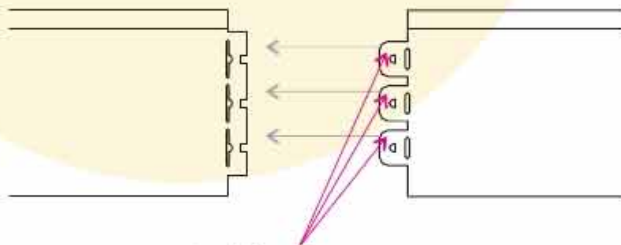
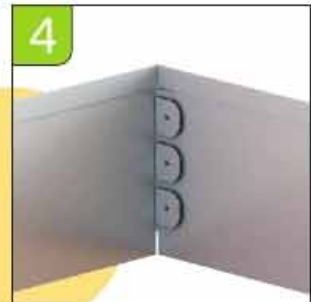
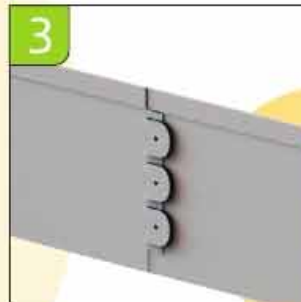
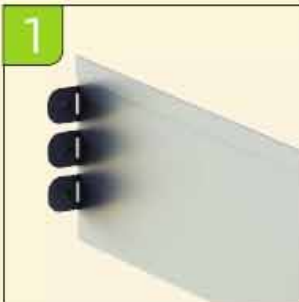


### Lawn Edge With Clamps

- The lawn edge with clamps as a special connection structure makes the edges can be easily connected to each other.
- No accessories are required and will be fixed on closed lawn edges to make it more stable. Upper edge folded to protect against injury.



Two-end display



Locking Elements

#### Specifications

Item	Length(mm)	Height(mm)	Finish
LEC001	1195	130	Galvanized/Powder Coated

#### Colour

- Galvanized
- RAL 6005
- RAL 7016

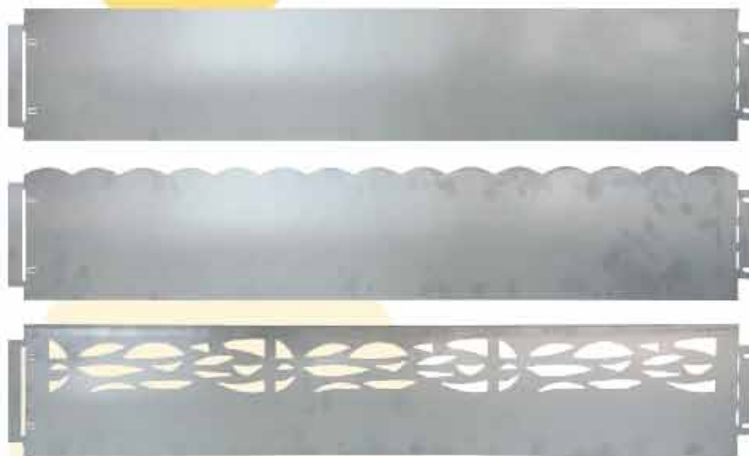


## Lawn Edge With Decorated Pattern

- The lawn edge with decorated pattern as a special connection structure makes the edges can be easily connected to each other.
- No accessories are required and will be fixed on closed lawn edges to make it more stable.
- Available in 3 special pattern on the edge to improve the beauty of your garden. Upper edge folded to protect against injury.



Two-end display



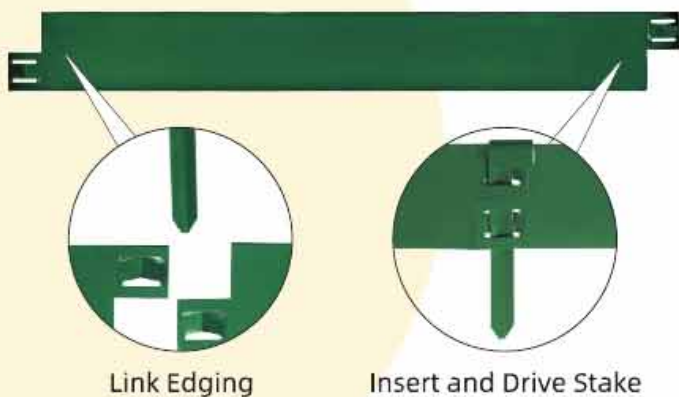
### Specifications

Item	Length(mm)	Height(mm)	Finish
LED01-Normal	1000	180	Galvanized Powder Coated
LED02-Wave	1000	180	
LED03-Flower	1000	180	



## Economical Steel landscape Edging

Metal Edging is a versatile solution for a variety of outdoor projects. Whether you're using it to define and mark off flower beds, gardens, or walkways, this edging is easy to install and can be secured into the ground using metal edging stakes (sold separately). The powder-coated finish helps to prevent corrosion, so your edging will last for years to come, and the attractive color blends easily with surroundings if you're looking for a low-visibility option.



Link Edging

Insert and Drive Stake

### Specifications

Lengths: 3 feet  
Heights: 4 inches

### Powder Coat Colors

RAL 9005   RAL8017   RAL 6005

### Finishes

Powder coat:  
Smooth / Textured

## Economical Steel Edging Stakes

8-inch stakes are easy to install and are used to secure metal garden edging into the ground. Ideal for defining and marking off flower beds, gardens, and walkways, these stakes feature a powder-coated finish for added durability and to help prevent corrosion. The attractive color blends in with the surroundings, and they can accommodate curves and angles.

### Specifications

Heights: 8 inches

### Finishes

Powder coat:  
Smooth / Textured

### Powder Coat Colors

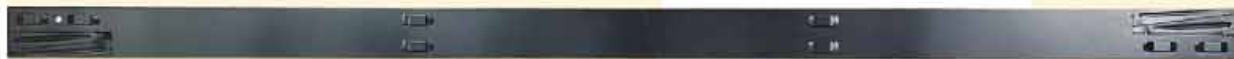
RAL 9005   RAL8017  
RAL 6005





## Steel Landscape Edging With Attached Stakes

Gives your yard a long-lasting landscape edging which are made with galvanized steel. and comes with the perfect number of stakes every time. Either use long handled pliers to bend the stakes back and forth until the tab fatigues or leave them on and use splicing stakes to create garden beds, driveways and more.



### Specifications

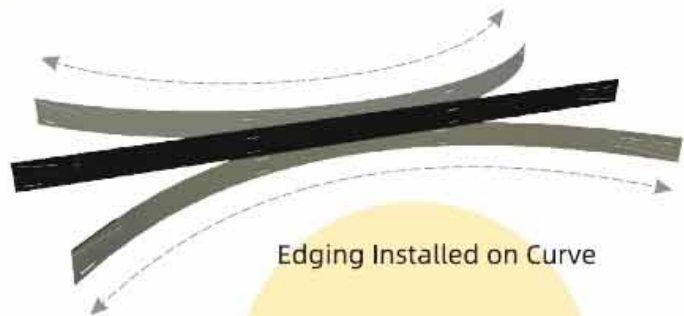
Lengths: 8 feet/4feet  
 Heights: 4 inches  
 Gauge: 14 gauge

### Finishes

Powder coat:  
 Smooth / Textured

### Powder Coat Colors

RAL 9005
  RAL8017
  RAL 6005



Edging Installed on Curve



Remove Stakes



Link Edging



Drive Stakes



## Steel Landscape Edging Corner Stake

Preformed to a 90 angle to create a corner using 2 cuts end of edging.



### Specifications

Heights: 8 inches

### Finishes

Powder coat:  
Smooth / Textured

### Powder Coat Colors



## Steel Landscape Edging Splicing Stake

- For connecting cut-off pieces of edging or concealing gaps and protruding corners caused by grade changes.

- Designed to easily slip over 2 cut ends of steel edging and secured using a deep stake.



### Specifications

Heights: 12 inches

### Finishes

Powder coat:  
Smooth / Textured

### Powder Coat Colors





## Steel Landscape Edging Extra Stake

- For connecting cut-off pieces of edging or concealing gaps and protruding corners caused by grade changes.
- Designed to easily slip over 2 cut ends of steel edging and secured using a deep stake.






### Specifications

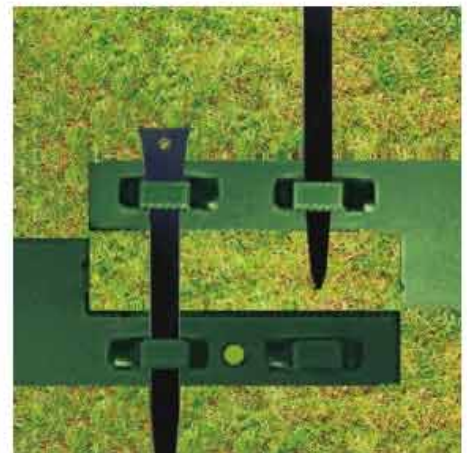
Heights: 12 inches

### Finishes

Powder coat:  
Smooth / Textured

### Powder Coat Colors

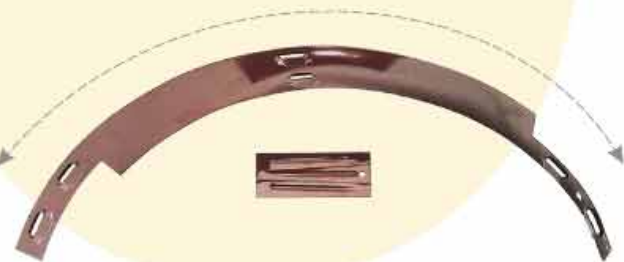
- |                                                                                     |          |                                                                                     |         |
|-------------------------------------------------------------------------------------|----------|-------------------------------------------------------------------------------------|---------|
|  | RAL 9005 |  | RAL8017 |
|  | RAL 6005 |                                                                                     |         |





## Steel Tree Ring with Three Stakes

- Protect your tree and its roots from lawn mowers and keep your mulch contained with the green steel tree ring.
- 3 spikes are included with each curved panel section.
- 3 panels connected creates a circle.
- Powder coated finish provides long lasting wear and aids in rust and corrosion prevention.



### Specifications

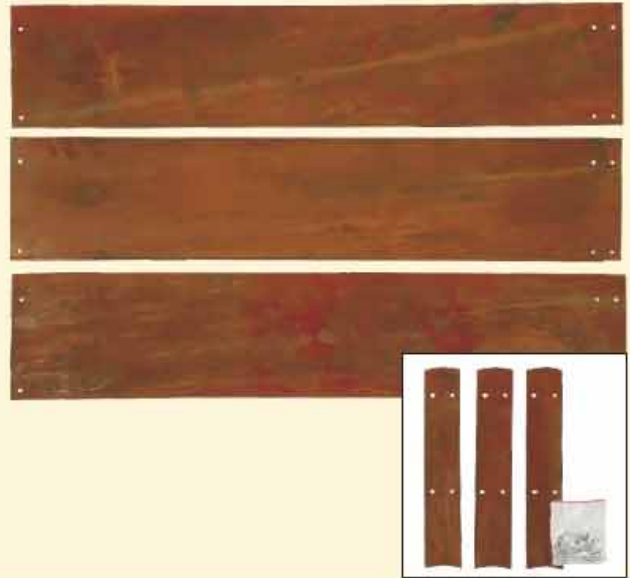
Lengths: 3-3/4 feet  
Heights: 4 inches  
Gauge: 14 gauge

### Finishes

Powder coat:  
Smooth / Textured

### Powder Coat Colors

■ RAL 9005 ■ RAL8017 ■ RAL 6005



## Lawn Edge Round






- Flexible lawn edging round for flower and tree bed.
- Stable hold thanks to screw connection.



### Specifications

Item	Dia.(mm)	Height(mm)	Finish
LER001	600	160	Galvanized Powder Coated Corten Steel

### Colour

	Galvanized		Rust
	RAL 6005		RAL 9005
	RAL 7016		



## Corrugated Edging


- Corrugated Edging is a shapeable lawn edge to prevent grass & weeds growing out onto your paths, leaving your garden looking neat and well-maintained.
- It's a great garden border solution for flower beds, along paths or driveways and in backyards.
- Available in 2 corrugated types. Available in different length (Easy to cut - you can use a scissors) and height (Position edging into trench according to your target depth).
- Easy to install, simply tap or push firmly into place. Overlap any ends if using more than one roll. Upper edge folded to protect against injury.



### Specifications

Item	length(m)	Height(mm)	Finish
CEB320250	3.2	250	Galvanized/Powder Coated
CEB500150	5	150	Galvanized/Powder Coated
CEB600150	6	150	Galvanized/Powder Coated
CE5500150	5	150	Galvanized
CEB100075	10	75	Galvanized/Powder Coated

### Colour

-  Galvanized
-  RAL 6005
-  RAL 7016



## Lawn Edge With Roll

- The lawn edge with roll is a great garden border solution for flower beds, along paths or driveways and in backyards. Corten's popularity can be attributed to its strength, durability, practicality, and great appeal.
- It extends a few metres longer than other edgings in our selection, so it's a bit more work to set up. One roll is 10 m long. Upper edge folded to protect against injury.



### Specifications

Item	length(m)	Height(mm)	Finish
LER001	10	150	Corten with Rusty

### Colour

 Rust

COPY-RIGHT RESERVED  
2023.10 FIRST EDITION



 **HEBEI MINMETALS CO.,LTD.**

Add: No.337, XinHua Road, Shijiazhuang, 050057, China.

Tel: +86-311-8520 2701 / 8520 2702 / 8527 2699

Fax: +86-311-8520 2703

E-mail: sales@hebeimetals.com

ussales@hebeimetals.com

eusales@hebeimetals.com

Website: <http://www.hebeiminmetals.com.cn>

<http://www.chinawiremesh.com>

