

# FeltPro<sup>®</sup>ducts

Coverings for British Industry



**2024/25  
PRODUCT  
CATALOGUE**



# **FeltProducts**

Coverings for British Industry

<b>CHARCOAL MINERAL GLASS FIBRE SHED FELT</b>	<b>P3</b>
<b>HEAVY DUTY GREEN MINERAL 40KG</b>	<b>P4</b>
<b>GREEN MINERAL 35KG TRADE FELT</b>	<b>P5</b>
<b>ULTRAPOL™ - TOUGHENED POLYESTER MINERAL FELT</b>	<b>P6</b>
<b>HURACAN250™ - ULTRA STRONG POLYESTER MINERAL FELT</b>	<b>P7</b>
<b>TECNAFLEX™ TORCH-ON POLYESTER MINERAL CAP SHEET</b>	<b>P8</b>
<b>SUPATEC™ TORCH-ON POLYESTER MINERAL CAP SHEET</b>	<b>P9</b>
<b>SUPATEC™ 4KG POLYESTER MINERAL CAP SHEET</b>	<b>P10</b>
<b>SUPATEC™ 5KG POLYESTER MINERAL CAP SHEET</b>	<b>P11</b>
<b>SUPATEC™ TORCH-ON POLYESTER SAND FINISH UNDERLAY 4mm</b>	<b>P12</b>
<b>SUPATEC™ TORCH-ON FILM UNDERLAY</b>	<b>P13</b>
<b>SUPATEC™ TORCH-ON SAND UNDERLAY</b>	<b>P14</b>
<b>REINFORCED FIBREGLASS ROOFING SHINGLES</b>	<b>P15</b>
<b>NEWOLINE™ CORRUGATED BITUMEN ROOFING SHEETS</b>	<b>P16-17</b>
<b>DAMP PROOF MEMBRANE (DPM)</b>	<b>P18</b>
<b>DAMP PROOF COURSE (DPC)</b>	<b>P19</b>
<b>STROTEX BREATHABLE MEMBRANE</b>	<b>P20</b>
<b>STROTEX AL180g/m<sup>2</sup> / TEMPORARY PROTECTION SHEET (TPS)</b>	<b>P21</b>
<b>BUILDERS RUBBLE SACKS / UNIVERSAL DRY RIDGE + HIP KITS</b>	<b>P22</b>
<b>RADON BARRIER / VAPOUR BARRIER</b>	<b>P23</b>
<b>FELT ADHESIVES</b>	<b>P24</b>
<b>1F SLATERS FELT / 3H PERFORATED FELT</b>	<b>P25</b>
<b>UPCOMING PRODUCTS / PRODUCT SPECIFICATION</b>	<b>P26</b>
<b>ABOUT THE COMPANY / OFFICE LOCATION</b>	<b>P27</b>
<b>ABOUT US</b>	<b>P28</b>



# CHARCOAL MINERAL GLASS FIBRE SHED FELT



Charcoal mineral top side with a film faced bottom side which prevents rippling and keeps the product flat when laid.

## **INTENDED USE:**

- A waterproofing top coat roofing felt
- Ideal for use on Sheds, Summerhouses, Kennels and Hutches

## **FIXING METHOD:**

- Galvanised Clout Nails, spaced every 75mm
- Felt Adhesive/Felt Joint Adhesive, brushed along edges
- **Do not remove the film backing from this product**

## **ROLL SIZES:**

- 20m x 1m - max weight 44kg (pallet of 20 rolls)
- 10m x 1m - max weight 20kg (pallet of 40 rolls)
- 5m x 1m - max weight 10kg (pallet of 54 rolls)

## **LIFE EXPECTANCY:**

- 5+ years



# HEAVY DUTY GREEN MINERAL 40KG



Natural green mineral slate top side with a film faced bottom side which prevents rippling and keeps the product flat when laid.

## **INTENDED USE:**

- A high-quality waterproofing roofing felt – can be used as a single layer roofing product
- Ideal to use on Sheds, Summerhouses, Home Office, Log Cabins and Garages etc

## **FIXING METHOD:**

- Galvanised Clout Nails, spaced every 75mm
- Felt Adhesive/Felt Joint Adhesive, brushed along edges
- **Do not remove the film backing from this product**

## **ROLL SIZES:**

- 10m x 1m – max weight 40kg (pallet of 24 rolls)

## **LIFE EXPECTANCY:**

- 10+ years



# GREEN MINERAL 35kg TRADE FELT



Natural green mineral slate top side with a film faced bottom side which prevents rippling and keeps the product flat when laid.

## **INTENDED USE:**

- A high-quality waterproofing roofing felt
- Perfect for Sheds, Summerhouses, Log Cabins etc.

## **FIXING METHOD:**

- Galvanised Clout Nails spaced every 75mm
- Felt Adhesive / Felt Joint Adhesive, brushed along edges
- **Do not remove the film backing from this product**

## **ROLL SIZES:**

- 10m x 1m - max weight 35kg (pallet of 30 rolls)

## **LIFE EXPECTANCY:**

- 10+ years



# ULTRAPOL™ - TOUGHENED POLYESTER MINERAL FELT



Ultrapol SBS Polyester Mineral Shed Roofing Felt – The ultimate quality in polyester roofing felt.

Mineral top side with a film faced bottom side which prevents rippling and keeps the product flat when laid.

This polyester based shed felt is ultra strong and ultra flexible in even the coldest temperatures, down to -25°C. The best polyester shed felt on the market.

## INTENDED USE:

- The ultimate waterproofing roofing felt, used as a single layer
- Ideal to use on Sheds, Summerhouses, Home Office, Log Cabins and Garages

## FIXING METHOD:

- Galvanised Clout Nails spaced every 75mm
- Felt Adhesive brushed along edges
- **Do not remove the film backing from this product**

## ROLL SIZES:

- 10m x 1m
- 20m x 1m

## LIFE EXPECTANCY:

- 15 year guarantee

ULTRAPOL AVAILABILITY	10m ROLL	20m ROLL	PALLET SIZE 10m	PALLET SIZE 20m
BLACK MINERAL	YES (25KG MAX)	YES (44KG MAX)	33	18
GREEN MINERAL	YES (28KG MAX)	YES (48KG MAX)	33	15
RED MINERAL	YES (28KG MAX)	N/A	33	N/A



# HURACAN250™ – ULTRA STRONG POLYESTER MINERAL FELT



Natural green mineral slate top side with a film faced bottom side which prevents rippling and keeps the product flat when laid.

Ultra strong, impossible to tear by hand and with flexibility at temperatures down to -8°C, the Huracan250 is the ultimate waterproofing roof felt.

## **INTENDED USE:**

- Ideal to use on Sheds, Summerhouses, Home Office, Log Cabins and Garages

## **FIXING METHOD:**

- Galvanised Clout Nails, spaced every 75mm
- Felt Adhesive brushed along edges

## **ROLL SIZES:**

- 10m x 1m – max weight 40kg (pallet of 24 rolls)

## **LIFE EXPECTANCY:**

- 20 year guarantee



# TECNAFLEX™ TORCH-ON POLYESTER MINERAL CAP SHEET



4.5mm thick polyester base with SBS modified bitumen. Should be rolled out prior to use.

## **INTENDED USE:**

- Cap/Top Sheet

## **FIXING METHOD:**

- Torching on only

## **ROLL SIZES:**

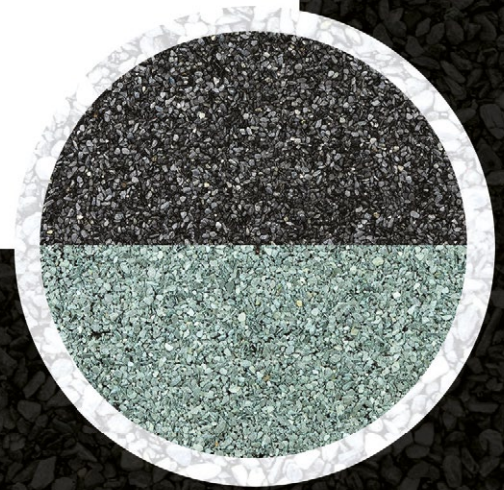
- 8m x 1m - max weight 45kg (pallet of 20 rolls)

## **LIFE EXPECTANCY:**

- 20 year guarantee when applied as a 2 layer system
- Flexible in low temperatures down to -20°C



# SUPATEC™ TORCH-ON POLYESTER MINERAL CAP SHEET



5mm thick polyester base with SBS modified bitumen. Should be rolled out prior to use.

## **INTENDED USE:**

- Cap/Top Sheet

## **FIXING METHOD:**

- Torching on / Cold Felt Adhesive

## **ROLL SIZES:**

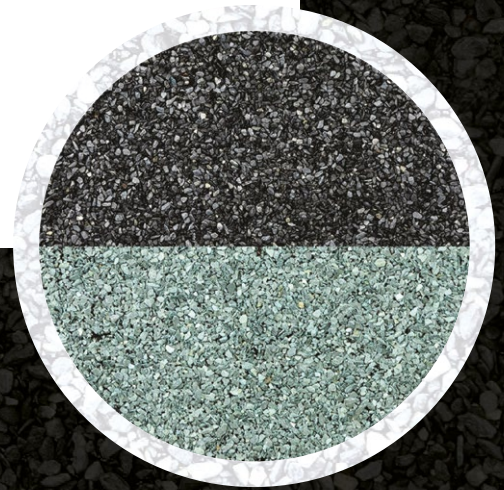
- 7.5m x 1m - max weight 44kg (pallet of 20 rolls)

## **LIFE EXPECTANCY:**

- 15 year guarantee when applied as a 2-layer system
- Flexible in low temperatures down to -15°C



# SUPATEC™ 4KG POLYESTER MINERAL CAP SHEET



3.6mm thick polyester base with SBS modified bitumen. Should be rolled out prior to use.

## **INTENDED USE:**

- Cap/Top Sheet

## **ROLL SIZES:**

- 8m x 1m (pallet of 20 rolls)

## **LIFE EXPECTANCY:**

- 10 years when applied as a 2 layer system
- Flexible in low temperatures down to -10°C

## **BENEFITS:**

- 34kg roll
- Sbs modified
- -10° flexibility
- Grooved underside for better ventilation



# SUPATEC™ 5KG POLYESTER MINERAL CAP SHEET



4.5mm thick polyester base with SBS modified bitumen. Should be rolled out prior to use.

## **INTENDED USE:**

- Cap/Top Sheet

## **ROLL SIZES:**

- 8m x 1m (pallet of 20 rolls)

## **LIFE EXPECTANCY:**

- 20 years guarantee when applied as a 3 layer system

## **BENEFITS:**

- 4.5mm thick
- 8m x 1m
- 40kg roll
- Sbs modified
- -20° flexibility
- Grooved underside for better ventilation



# SUPATEC™ TORCH-ON POLYESTER SAND FINISH UNDERLAY 4mm



4mm thick polyester base with modified bitumen. Should be rolled out prior to use.

## **INTENDED USE:**

- Cap/Top/Underlay Sheet

## **FIXING METHOD:**

- Torching on / Cold Felt Adhesive
- Bottom side finish – Plastic Foil
- Top side finish – Fine Sand

## **ROLL SIZES:**

- 7.5m x 1m – max weight 40kg (pallet of 20 rolls)

## **LIFE EXPECTANCY:**

- 10 year guarantee when applied as a 2 layer system
- Flexible in low temperatures down to -10°C



# SUPATEC™ TORCH-ON FILM UNDERLAY



3mm SBS bitumen base means this product is flexible at low temperatures and does not have to be rolled out prior to use.

**New this year: now available in polyester!**

## **FINISHING:**

- Bottom side - Plastic Film
- Top side - Plastic Film

## **INTENDED USE:**

- Underlay

## **FIXING METHOD:**

- Torching on / Cold Felt Adhesive

## **ROLL SIZES:**

- 12m x 1m - max weight 42kg (pallet of 24 rolls)
- New Polyester:  
10m x 1m x 3mm - max weight 45kg (pallet of 25 rolls)

## **LIFE EXPECTANCY:**

- 10+ years



# SUPATEC™ TORCH-ON SAND UNDERLAY



2.2mm SBS bitumen glass fibre base means this product is flexible at low temperatures and does not have to be rolled out prior to use.

## **FINISHING:**

- **Bottom side** - Plastic Foil
- **Top side** - Fine Sand

## **INTENDED USE:**

- Underlay

## **FIXING METHOD:**

- Torching on / Cold Felt Adhesive

## **ROLL SIZES:**

- 15m x 1m - max weight 42kg (pallet of 24 rolls)

## **LIFE EXPECTANCY:**

- 10+ years



# REINFORCED FIBREGLASS ROOFING SHINGLES



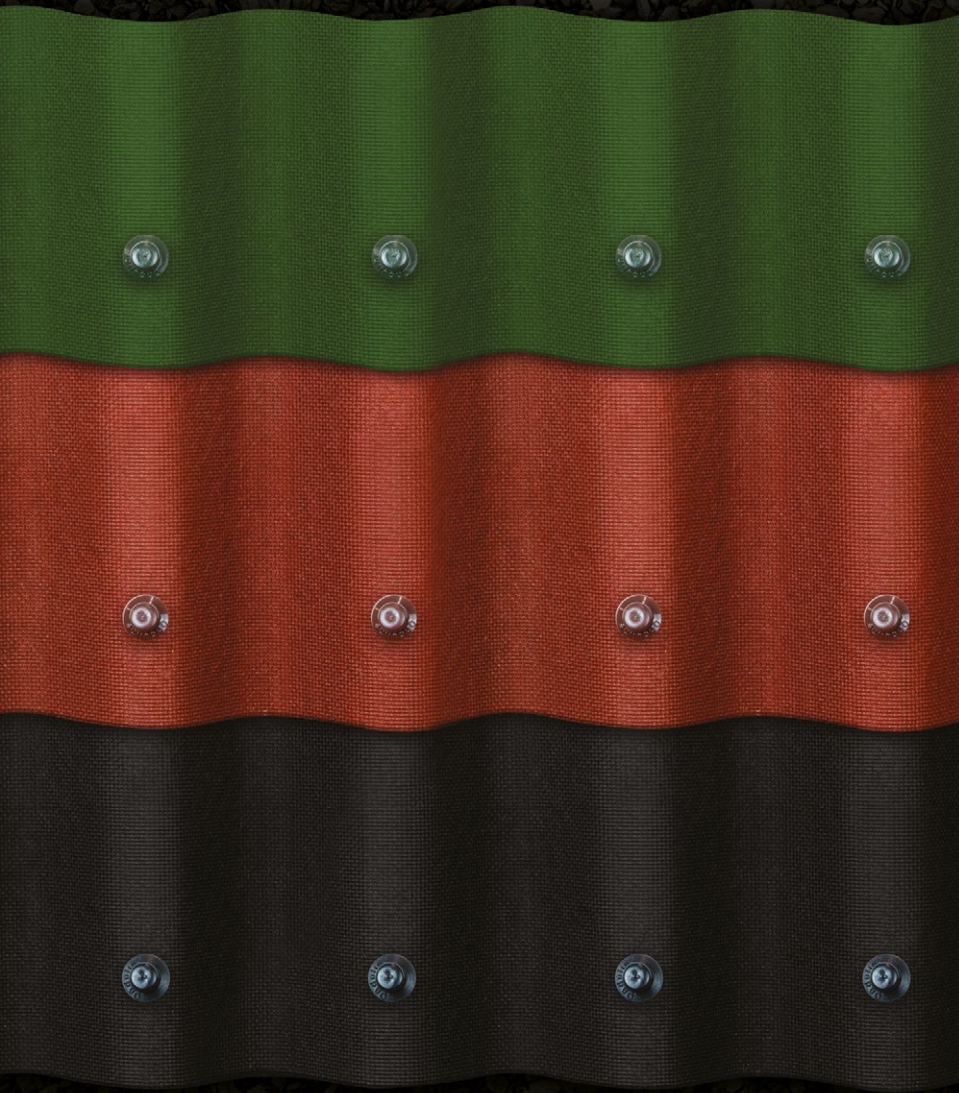
Roofing Shingles are a great way to make any roof take on a professional finish, a durable, decorative, weatherproof covering that's likely to last 30 years or more. The lightweight reinforced fibreglass product comes in a variety of patterns and colours, and Roofing Shingles can be easily applied to Sheds, Stables, Summerhouses, Chalets, Beach Huts and even Dog Kennels.

- The Hexagonal and 3-tab Roofing Shingles come with a 10-year guarantee and a 3m<sup>2</sup> coverage using the 21 pieces in the pack.
- The Hexagonal shingles have a peel-off adhesive backing
- **Length per piece:** 100cm
- **Fixing Method:** Felt Adhesive & Galvanised Extra Large Head Clout Nails

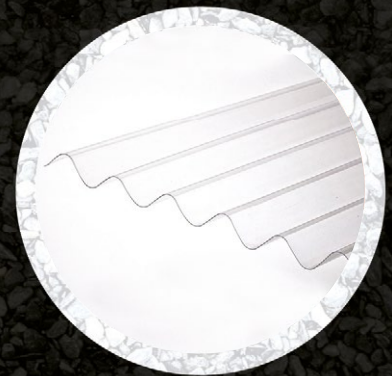
TYPE OF SHINGLE	SIZE PER PACK	PACKS PER PALLET	BLACK	RED	GREEN	GREY
<b>HEXAGONAL</b>	3m <sup>2</sup>	45	YES	YES	YES	YES
<b>3-TAB</b>	3m <sup>2</sup>	42	YES	YES	YES	NO
<b>RIDGE &amp; EAVES</b>	6m length	40	YES	YES	YES	YES



# NEWOLINE™ CORRUGATED BITUMEN ROOFING SHEETS



1m & 2m Ridge available in green, brown & black



Transparent PVC and translucent GRP sheets available



Newoline 80mm nails available in green, brown & black



# NEWOLINE™ CORRUGATED BITUMEN ROOFING SHEETS

2m x 0.97m (Coverage 755mm) x 3mm (weight per sheet 6.8kg)  
Corrugated width 95mm

## COLOURS:

- Green / Brown / Black

## BENEFITS OF NEWOLINE:

- Lightweight but extremely tough corrugated roofing composite material manufactured from bitumen – organic fibres saturated under intense pressure and heat weigh only 6.8kg
- Virtually no maintenance needed
- Easy to cut
- Resistant to colour fade
- Does not rust or become brittle
- Withstands wind speeds over 100mph

## LIFE EXPECTANCY:

- 15 year guarantee

## INSTALLATION GUIDE:

- The fixing guide recommends using 20-25 nails per sheet depending on the roof pitch

## SUNDRIES:

- **GRP Sheets**  
2m x 0.95m
- **Transparent/Translucent Sheets**  
2m x 0.95m
- **1m and 2m Ridge**  
Overlap of 30cm per piece
- **Nails**  
65mm / 80mm Annular Ring Wire.  
Colour coded tops.  
Bags of 100 / Boxes of 400



# DAMP PROOF MEMBRANE (DPM)



Ideal for waterproofing of buildings and building structures, creating a waterproof layer under floors, floorings, slabs etc.

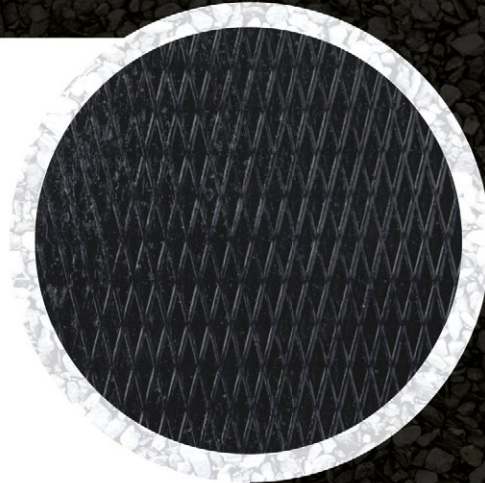
## All of our DPMs are:

- “BBA”/CE Certified No: 1454 EN 14909:2012 Type A
- Watertight at: > 2kPa
- Resistance at low temperature: - 25°C
- Resistance to Fire: Class F
- Shielding of building facades and windows
- Durable, flexible and easy to install
- Protects the floor against the harmful impact of water and moisture
- Prevents occurrence of mould and fungi
- Non-hazardous

TYPE OF DPM	SIZES AVAILABLE	ROLLS PER PALLET
125mu	4m x 25m	100
	4m x 50m	50
	4m x 25m clear	50
250mu BBA	4m x 25m	50
300mu nominal	4m x 25m	50
	4m x 5m	50
300mu BBA	4m x 25m	50
500mu BBA	4m x 25m	40



# DAMP PROOF COURSE (DPC)



Ideal for waterproofing of walls against moisture, preventing mold, mildew and other fungal residues inside buildings.

## Our DPC Specs:

- Length: 30m Thickness: 0.4mm Weight: 380g/m<sup>2</sup>
- Horizontal Anti - Damp Isolation for use on brick/block
- Surface: Serrated Diamond cut top & bottom to prevent mortar from slipping
- Watertight at: > 2kPa
- Resistant at low temperature: - 25°C
- Resistance to Fire: Class F
- Resistant to changing temperature, durable, flexible and alkali-resistant
- Non-hazardous

ROLL SIZE	ROLL QTY PER SLEEVE
100mm	9
112.5mm	9
150mm	6
225mm	4
300mm	3
337.5mm	3
375mm	3
450mm	2
600mm	2
900mm	1

**MIXED PALLET ORDERS ARE A MINIMUM OF 80 SLEEVES**



# STROTEX BREATHABLE MEMBRANE



STROTEX Breathable Membrane is a diffusion-open membrane, designed as a layer of preliminary covering for the external roofing. It is also an excellent windproof material, intended for walls of buildings in skeletal structures.

## STROTEX Breathable Membrane Specs:

- Roof underlay for both warm and cold pitched roofs
- BBA/CE certified quality product
- Provide a barrier to wind driven rain, snow and dust into the roof void
- Excellent waterproofing characteristics
- High water vapour permeability
- Membrane is lightweight, strong and easy to handle and install
- UV stabilised and has an increased flammability resistance

BREATHABLE MEMBRANE TYPE	STROTEX 95g	STROTEX 115g	STROTEX 135g	STROTEX 150g	STROTEX 170g	STROTEX 220g
SIZES	50 x 1m rolls 50 x 1.5m rolls	50 x 1m rolls 50 x 1.5m rolls	50 x 1m rolls 50 x 1.5m rolls	50 x 1m rolls 50 x 1.5m rolls	50 x 1m rolls 50 x 1.5m rolls	50 x 1m rolls 50 x 1.5m rolls
ROLL QTY PER PALLET	80 per pallet	77 per pallet	72 per pallet	60 per pallet	60 per pallet	50 per pallet
						
						



# STROTEX AL180g/m<sup>2</sup>



STROTEX AL180 is a multilayer film consisting of one layer of Metallised Polypropylene Film, one layer of Polypropylene Mesh and one layer of Polypropylene Film. The metallised layer reflects thermal radiation, preventing heat loss.

## INTENDED USE:

- Insulating barrier against water vapour and wind
- On both ventilated and non-ventilated roofs

## ROLL SIZES:

- 50m x 1.5m  
(1mm thick)

# TEMPORARY PROTECTION SHEET (TPS)



Our Polythene ECO TPS constitutes of a blown film of extruded low-density polyethylene, manufactured from 100% Recycled LDPE. TPS is to be used as a temporary protective sheet in order to protect against environmental effects such as dust and rain.

## ROLL SIZES:

- 4m x 25m



# BUILDERS RUBBLE SACKS



These 100mu grey heavy duty rubble sacks are double crimped, and suitable for disposing of rubble and general building waste. They are reusable and recyclable.

- 750mm x 500mm

# UNIVERSAL DRY RIDGE + HIP KITS



## UDRPro

Universal Ventilated 6 metre  
Dry Ridge Kit – Black

### Included in this kit:

- 6m Dry Ridge Roll
- 13 Dry Ridge Union Strips and Clips
- 10 Ridge Brackets
- 13 Fixing Screws
- 13 Clamping Plates

## UDR20

Universal Ventilated 6 metre  
Dry Ridge Kit – Black

### Included in this kit:

- 6m Dry Ridge Roll
- 20 Dry Ridge Union Strips and Clips
- 10 Ridge Brackets
- 20 Fixing Screws
- 20 Clamping Plates



# RADON BARRIER



Yellow Radon Gas Barrier is a quality driven product widely used throughout the UK and Europe to protect against cancer-causing Radon Gases. Our Radon Barrier comes centrefold from 2 meters to 4 meters, 1600 Gauge and because it is manufactured from 100% recycled materials, is the greener choice.

All our products conform to ISO 9001 and have been independently tested to K124/02/95

## ROLL SIZES:

- 4m x 20m
- 50 rolls per pallet

# VAPOUR BARRIER



Our 125mu Vapour Barrier is a plastic layer that restricts the movement of warm, moist air from inside a property into the fabric of the building. This reduces the risk of harmful interstitial condensation by ensuring that any moisture within the cavity is at a manageable level.

## SIZES AVAILABLE:

- 4m x 50m
- 50 rolls per pallet



# FELT ADHESIVES

## 5L ROOFING FELT ADHESIVE



Our 5L Roofing Felt Adhesive is a black oxidised and bitumen-based adhesive for a strong final bond to all of our bituminous products, and is suitable for use with metal, timber, and concrete. Applied cold with a brush, roller or mop.

## 330ml FELT JOINT ADHESIVE



Our 330ml Felt Joint Adhesive cartridge is a long curing water repellent and adhesive. This product is to be primarily used on felt joints and sealed edges.



# 1F SLATERS FELT



## ROLL SIZES:

- 15m x 1m



A traditional underlay for a pitched roofing system, our 1F Slaters Felt is hessian-backed to give extra strength and should be used as a secondary waterproofing membrane under slates or tiles on a pitched roof.

# 3H PERFORATED FELT



## ROLL SIZES:

- 20m x 1m

3H Perforated Sand Underlay felt comes in a 20m x 1m roll, weighing approximately 36kg, and is a Glass Fibre, Sand-Backed Underlay.

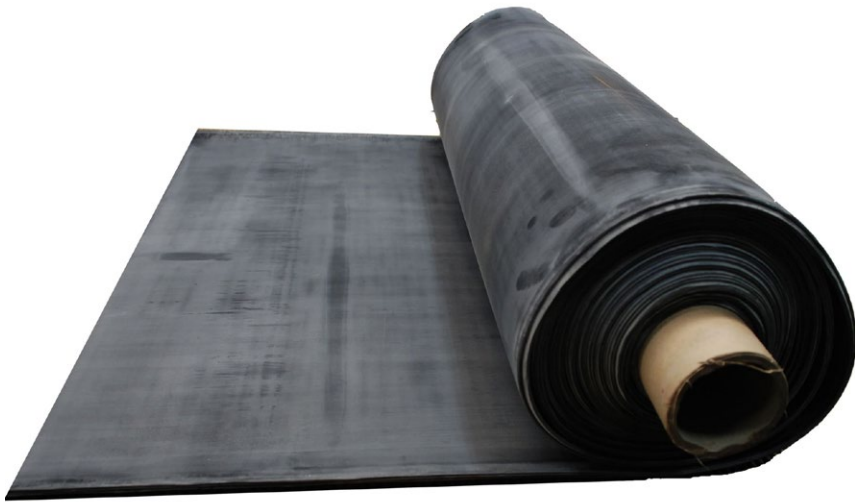
3H Perforated Sand Underlay is a classic, versatile product that can be used in a variety of circumstances. The Perforated Venting system makes it an ideal underlay, and should be laid down loosely for maximum ventilation efficiency.

Its versatility allows for flexibility in its application: it can be used in both a Torch-On system or a Pour and Roll system.



# UPCOMING PRODUCTS

## EPDM



- In 3m, 4.5m and 6m rolls
- 1.2mm fused

## HOUSE WRAP

- 100g/m<sup>2</sup> rolls
- 1.35 x 100m/2.7m x 100m
- In black, green and blue

## PRODUCT SPECIFICATION

Here at Felt Products we value product quality over anything else. For this reason, we have decided to showcase the specification of all products and materials on our website.

To view technical data on products such as DPM, Breathable Membrane and Torch-On Felt.

Please visit: [www.feltproducts.co.uk/product-data-sheets](http://www.feltproducts.co.uk/product-data-sheets)



# ABOUT THE COMPANY

Since 2011, we have supplied our premier range of felt and shingle products to timber merchants, roofing merchants and builders' merchants across the UK, as well as some of the largest shed manufacturers in the country. Over the years we have expanded our stock range to include items such as DPM, DPC and breathable membranes, amongst many others.

Having recently moved to a brand-new, 80,000 ft<sup>2</sup> production facility, it is no coincidence that Felt Products has risen rapidly to become the fastest-growing building and roofing materials distributor in the UK. With a combined 150 years of industry knowledge and a youthful, modern sales team, Felt Products is the contemporary choice for your business.

## OFFICE LOCATION



### OFFICE NUMBER:

01257 786600

### EMAIL ADDRESS:

[sales@feltproducts.co.uk](mailto:sales@feltproducts.co.uk)

### ADDRESS:

Felt Products Ltd  
Bescar Brow Lane,  
Scarisbrick,  
L40 9QH



# ABOUT US



**STUART OLDFIELD**

Managing Director

[stuart@feltproducts.co.uk](mailto:stuart@feltproducts.co.uk)

Tel: 07825 795559



**MIKE ASPEY**

Logistics Manager

[sales@feltproducts.co.uk](mailto:sales@feltproducts.co.uk)

Tel: 01257 786600



**JOHN FISHWICK**

Business Development Manager

[john@feltproducts.co.uk](mailto:john@feltproducts.co.uk)

Tel: 07518 620183



**JAMES OLDFIELD**

Office Manager

[james@feltproducts.co.uk](mailto:james@feltproducts.co.uk)

Tel: 07783 544381



**PAWEL BORGIEL**

Import Manager

[pawel@feltproducts.co.uk](mailto:pawel@feltproducts.co.uk)

Tel: 01257 786600



**KENNETH OLDFIELD**

Accounts Manager

[accounts@feltproducts.co.uk](mailto:accounts@feltproducts.co.uk)

Tel: 01257 786600