

capji

EUROPE

Certified



Corporation



2025

Grow a greener life.

With the **orange interior**.



20

**Made in Holland**



# Made in Holland collection.

## Nature Groove NL



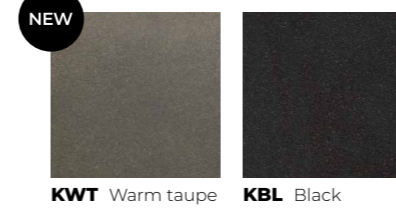
## Nature Rib NL



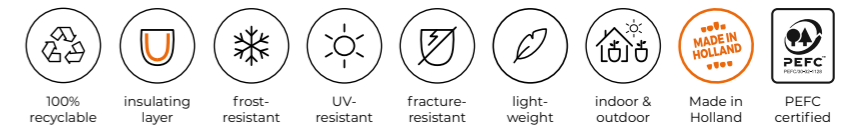
## Nature Clay NL



## Urban Smooth NL



## The Cork Collection NL



Pictured Vase Elegant Deluxe Rib Warm Taupe KWTR1131 & Plaster Ball Rib Warm Taupe KWTR933



# The Dutch touch.

The Capi Made in Holland collection is produced in our factory in Tilburg. Because of our own production process, we are able to manufacture high quality flower pots, which are 100% recyclable and come with a lifetime warranty.

The orange interior of these pots is intended to represent their

place of origin and has become a recognisable feature of our brand. The orange layer also provides the planters with insulation, offering the roots of your plants extra protection against both heat and cold. This extra layer provides extra firmness to the planter, which makes it fracture-resistant.

**Outdoor**

25 mm

For outdoor use, please drill a 25mm hole to ensure water drainage.

**Indoor**

100% watertight

The planters are perfect for indoor use, because they are 100% watertight.

- 100% recyclable
- insulating layer
- frost-resistant
- UV-resistant
- fracture-resistant
- light-weight
- indoor & outdoor
- Made in Holland
- PEFC certified

**LIFETIME WARRANTY**

# The Golden touch.











Designed to add a touch of glamour and elegance to your interior, making them true eye-catchers that are sure to impress.



The addition of the golden colour to our Clay, Rib, and Groove pots brings a sense of luxury to any room. You can find all models on the next page.



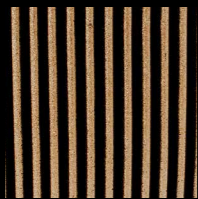
-  100% recyclable
-  indoor & outdoor
-  insulating layer
-  frost-/UV resistant
-  fracture-resistant
-  light-weight
-  PEFC certified
-  Made in Holland



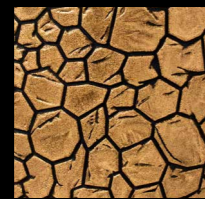
Available in:



KBGR Rib Gold



KQVGB Groove Gold



KCBC Clay Gold

## LIFETIME WARRANTY



**NEW  
COLOUR**



# Made in Holland **Warm taupe** NL

This year we expand our whole Made in Holland collection with a new, earthy colour: Warm taupe. This colour is nature itself.

**LIFETIME  
WARRANTY**



- 100% recyclable
- indoor & outdoor
- insulating layer
- frost-/UV resistant
- fracture-resistant
- light-weight
- MADE IN HOLLAND
- PEFC certified

Pictured: Vase Elegant Low Rib Warm Taupe KWTR783

Giving **waste** a new purpose.

98%

RECYCLED  
PLASTIC

Certified by RecyClass



# 98.6% MADE FROM WASTE, 100% HONEST.



VINVENTIONS

[Click for more information.](#)



## Where does it come from?

The Waste collection is made from **94%** used plastic corks. The cork comes from the French company Vinventions, that makes synthetic corks and screwcaps for wine bottles. They have a cork recycling program and the used corks are purchased by our supplier and transformed into raw material. The proceeds from this go to associations such as cancer funds.

To make the pot complete, **4%** agricultural ropes and a splash of used fishing nets (**1%**) are added.

Just like the rest of our Made in Holland collections, these pots are made in our factory in Holland and come with a lifetime warranty. The collection is available in a bright beige colour, with two stunning textures: Rib and Smooth.

## RecyClass certified

This collection is **98,6%** Recyclclass certified, showing that this collection actually consists of recycled materials. In our case by **98.6%**! The certification focuses on the traceability of recycled plastics within a process and the verification of a given percentage of recycled plastic content in products.

After all, does a product actually consist of what it says? Capi wanted to proof that what we say about the recycled materials in this collection is true. That's where we called in Recyclclass. What about the other 1,4%? These are additives to bind the materials and to give the pots the consistent colour they have.





Sizes from **XS** to **XXL**.



50

**Arc Granite**

**NEW**

Adds charm to every balcony.



54

**Balcony 'Made With'**

Capri for biodiversity.



58

**Biodiversity** collection

# Catch rainwater when it falls.

The climate is changing and the weather is becoming more extreme. There are more days with heavy and prolonged rainfall. And at the same time, there are more periods of sustained heat and drought. This has many adverse consequences. To help maintain a water friendly garden, Capi has developed several design rain barrels.

In today's world, where climate change has led to erratic weather patterns and increasing heat, the problem of rainwater runoff and heat build-up in urban areas has become a significant issue. Excessive rainwater runoff not only contributes to flooding but also exacerbates the urban heat island effect, making outdoor spaces uncomfortable and less sustainable.

Fortunately, Capi's rain barrels offer an effective solution to this problem. By collecting rainwater from rooftops, this precious resource can be stored and utilized for your garden's irrigation needs. You can nourish your plants with this natural resource, reducing the need for tap water consumption. This not only saves money on water bills but also minimizes the strain on local water supplies.

The Capi rain barrels are available in a variety of sizes, ensuring that you can find the perfect fit for your needs. Whether you have a small garden or a larger outdoor space, there's a rain barrel that suits your requirements. Additionally, the two different textures available allow you to choose a design that complements your aesthetic preferences and seamlessly integrates into your garden.

All rain barrels come with a planter on top. This way you can also add some extra green to your garden. Fill the planter on top with some flowers that attract birds, bees or butterflies to boost the biodiversity in your garden.

Did you know... Rain water is better for your plants than tap water, because it contains less chalk!

## Warranty

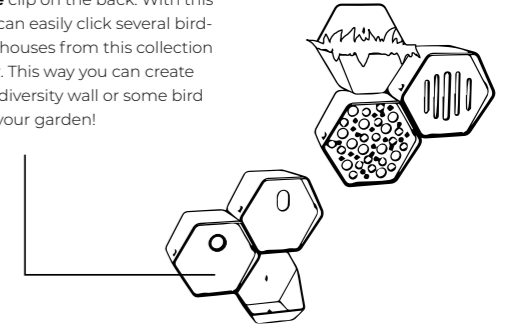
Just as our Made in Holland collection, our rain barrels come with a **lifetime warranty**. The barrels are very sturdy, weather resistant and can hold a lot of water. The accessories of the rain barrel come with a 5 year warranty and can be replaced easily without moving the rain barrel.

**LIFETIME WARRANTY** **5 YEAR WARRANTY**

Available in two textures and two colours:



The Hive models have a **click & combine** clip on the back. With this clip you can easily click several bird- or insecthouses from this collection together. This way you can create a full biodiversity wall or some bird villa's in your garden!



# Contribute to biodiversity.

Discover the Biodiversity Collection, a range of bird- & insect houses designed to support biodiversity in your garden or outdoor space. Available in two shapes, oval and hive, and two earthy colours, brown and anthracite. These houses seamlessly blend into natural surroundings while providing a safe haven for various species.

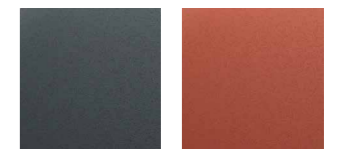
The gardens all around the world are consisting more and more of stone. And that's a shame, because insects and birds have less space to do what they are made for. Because a green lifestyle is very important for a lot of people and to help the animals, we have designed the biodiversity collection.

The Biodiversity Collection features a variety of houses, including birdhouses, butterfly houses, and bee hotels, each tailored to attract specific creatures.

From providing nesting sites for birds to creating habitats for butterflies and essential pollinators like bees, these houses play a vital role in supporting biodiversity.

The oval models have a natural shape so they fit in every garden. The Hive models have a modern geometric design, including a **click & combine** clip on the back. For the birdhouses, we have two different sizes of opening, attracting different bird species depending on the size of the opening.

Available in two shapes and two colours:



A Anthracite

B Brown

5 YEAR  
WARRANTY



# Level up your watering game.

Discover the versatile and stylish Xala watering items, the perfect companions for all your gardening needs. With a range of different watering cans and a convenient plant sprayer, these items make watering your plants a breeze.

Whether you're tending to your indoor plants or maintaining your outdoor garden, Xala offers a variety of options to suit your preferences. There is a watering solution for every task.

Functional design watering cans for home and garden in trendy colours. These watering cans are also suitable as a design object for your home and garden. Tip: Use the watering can as a vase and add some nice flowers.

The Chai plant sprayer is a handy tool for misting delicate plants or providing a gentle spray to keep leaves hydrated. Its compact size and easy-to-use design make it a must-have accessory for plant lovers.

Choose from an array of colours to match your style and create a visually appealing garden oasis.



**10** YEAR WARRANTY

Made with recycled materials.

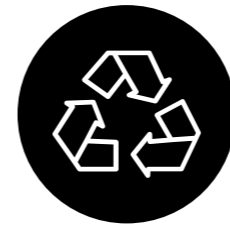


76

Groove 'Made With'



Pictured: Groove Sawdust White IGSW532 - IGSW533 - IGSW534



# Pots made with recycled materials.

Revolutionize your indoor decor with the new Capi Indoor Collection, a range of pots that combines stunning design with responsibility. Crafted through injection moulding, these pots are not only visually striking but also made from recycled materials, embodying a commitment to sustainability.

This new Indoor Collection features pots made with textiles, artificial grass, sawdust and medical waste. Each pot tells a story of repurposing and transforming one of these residuals into something beautiful.

The beige pots are made with sawdust, giving it a soft beige colour. This way wood waste is no longer waste and gets a new purpose. Then there is a fresh green colour made with artificial grass. Literally and figuratively a piece of green in your home. The black pots are made with textile. Thus, old clothes and other textile do not have to be burned, but they get a new life. The Metallic Copper pots are made from 99% medical waste, the highest percentage possible! Beautiful pots with their own story for a better world.

Available in three different sizes, these pots are suitable for different plants and spaces, providing endless possibilities for adding green in your home or office. Additionally, this collection comes with a lifetime warranty, ensuring the quality and long lifespan.

You not only enhance your indoor spaces but also contribute to the reduction of waste. These pots serve as a powerful reminder that taking care is not that hard.

Prefer using these pots outside? No problem. Just drill a drainage hole in the bottom so you can decorate your balcony or outside tables.

**Grow a greener life.** Together.

Available in:





Gives every space a **unique touch**.



84

**Indoor** collection



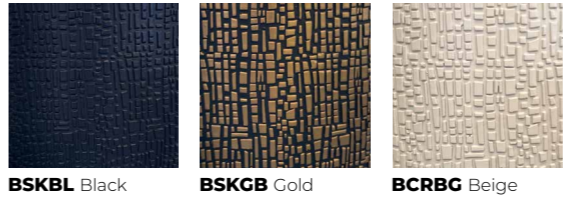
Pictured: Craft Warm Taupe BCRWT133

# Indoor collection.

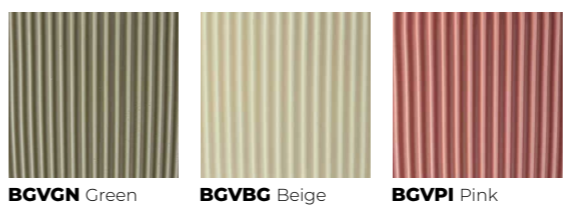
**NEW**  
**Craft**



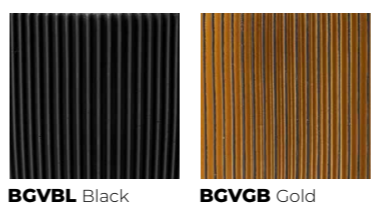
**NEW**  
**Skin**



## Groove Colours



## Groove Black & Gold



## Rib & Retro Gold



## Groove Anthracite & Ivory



## Rib Anthracite & Ivory



**5 YEAR WARRANTY**

light-weight indoor

# Displays.

To assist our customers to present the Capi accessories, we developed displays and POS materials for a practical and suitable presentation.

Please contact us for the options in your store.

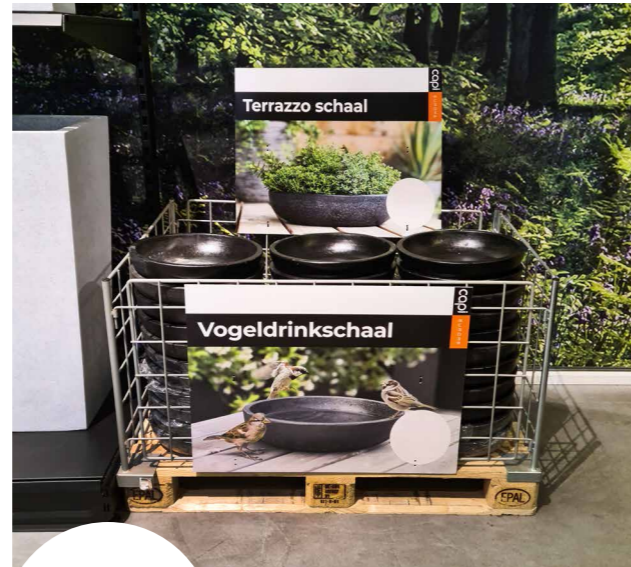
### Accessories display

A useful rack for displaying the pot pads and/or hydrocan. See page 67.



### Display for insert pots

This (mobile) rack is perfect for displaying our insert pots. See page 67.



### Terrazzo Bowl - TER031

TER301 37 x 9 4L

This black bowl is made of original terrazzo and is therefore sturdy and weather resistant.

This bowl is only available per pallet (135 pieces). See page 123.

### Yearround pallet promotion.

Made in Holland  
Row Black NL

**BUY ONE 933,  
GET A 932  
FOR FREE!**

### 25 Sets on one pallet



### Pallet

Planter Ball  
Row Black NL

932 ø 35 x 34 cm  
933 ø 43 x 41 cm

25 sets

### Indoor displays

For our bestselling 132 models we created two different pallet displays which you can easily place in store. The size of each display is 72 x 59 x 121 cm.



### Display Black & Gold DIS-132XMAS22

This display contains:

64x BGVBL132  
Groove Black 14 x 13

64x BGVGB132  
Groove Gold 14 x 13

32x BRTG132  
Retro Gold 14 x 13

# Indoor boxes.

Mostly for webshops we also provide some of our bestselling products in sets. The pots are packed in a cardboard box.

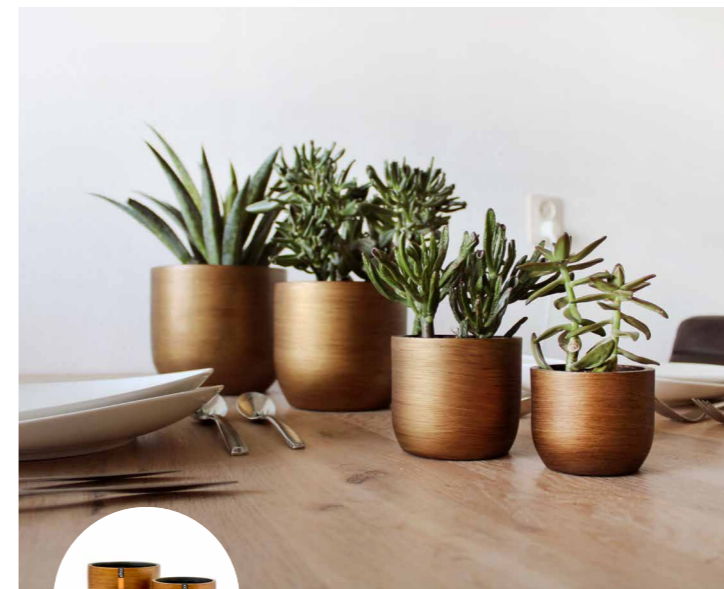
Please contact us for the different combinations.



### Mix box Groove Gold - Set of 3 BOX-BGVGB-3

This box contains:

1x BGVGB101	10 x 9
1x BGVGB109	13 x 10
1x BGVGB102	18 x 15



### Mix box Retro Gold - Set of 4 BOX-BRTG-4

This box contains:

1x BRTG131	8 x 6
1x BRTG139	9 x 8
1x BRTG132	14 x 13
1x BRTG133	17 x 15



### Mix box Groove Gold - Set of 4 BOX-BGVGB-4

This box contains:

1x BGVGB131	8 x 6
1x BGVGB139	9 x 8
1x BGVGB132	14 x 13
1x BGVGB133	17 x 15

Ask your accountmanager for the terms.

Grow a **greener life.**

capri

EUROPE

Cheers.  
Tschüss.  
Salut.  
**Houdoe.**

Grow a **greener life.**