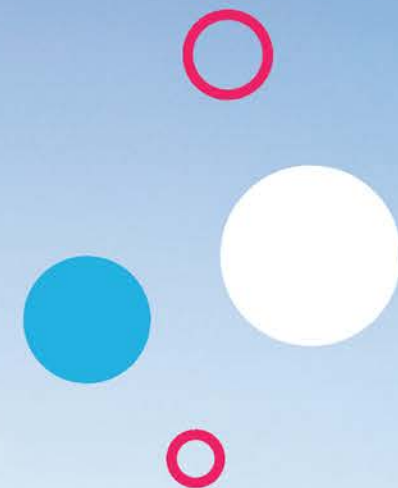




SIMPLY AMAZING

PRODUCTS

2025 RANGE



Visit Our Website

www.flowchemuk.com



AUTOMOTIVE RANGE

SCREEN WASH CONCENTRATE

What the product does;

- Screen wash concentrate is the perfect economical screen wash for all seasons. The formula has been developed with high-quality alcohols to clear traffic film, dirt, and insect deposits and leave a clean, smear-free finish. Effective down to -5c

How to use the product:

- Dilute at a ratio of 5:1 and add to your washer tank. Suitability Suitable for all vehicles and washer tanks.



Code	Size	Carton	Pallet	Barcode
CONSW1L	1L	12	828	5065015 010869
CONSW2L	2L	8	400	5061029 210615
CONSW5L	5L	4	160	5065015 010876



SCREEN WASH READY TO USE

What the product does;

- Screen wash is the perfect economical screen wash for all seasons. The formula has been developed with high-quality alcohols to clear traffic film, dirt, and insect deposits and leave a clean, smear free finish. Effective down to -5c.

How to use the product:

- No dilution required. Add straight to your washer tank. Suitability Suitable for all vehicles and washer tanks



Code	Size	Carton	Pallet	Barcode
RTUSW5L	5L	4	160	5065015 010890

flow

SCREEN WASH READY TO USE CHERRY SCENTED

What the product does;

- Screen wash Cherry Scented is the perfect economical screen wash for all seasons. The formula has been developed with high quality alcohols to clear traffic film, dirt, insect deposits and leave a clean, smear free finish. Effective down to -5c.

How to use the product:

- No dilution required. Add straight to your washer tank. Suitability Suitable for all vehicles and washer tanks



Code	Size	Carton	Pallet	Barcode
RTUSWCH2L	2L	8	400	5061029 211940

flow

SUMMER SCREEN WASH

What the product does;

- The perfect economical screen wash for the summer. The formula has been developed with high-quality raw materials to clear traffic film, dirt and insect deposits to leave a clean, smear free finish.

How to use the product:

- No dilution required. Add straight to your washer tank. Suitability Suitable for all vehicles and washer tanks.



Code	Size	Carton	Pallet	Barcode
SUMSW5L	5L	4	160	5065015 010890



ADBLUE 10L

What the product does;

- AdBlue, a 32.5% urea solution in water, is essential for vehicles with selective catalytic reduction (SCR) systems, mandated by emissions standards set by the EU and other regulatory bodies. It helps break down harmful nitrogen oxides into nitrogen and water vapor in the exhaust stream.

How to use the product:

- Always pour AdBlue into the AdBlue tank. Both the nozzle pistol and filler cap of the tank are clearly marked



Code	Size	Carton	Pallet	Barcode
ADBLUE10	10L	1	75	5061029 210455

ADBLUE

What the product does;

- AdBlue, a 32.5% urea solution in water, is essential for vehicles with selective catalytic reduction (SCR) systems, mandated by emissions standards set by the EU and other regulatory bodies. It helps break down harmful nitrogen oxides into nitrogen and water vapor in the exhaust stream.

How to use the product:

- Always pour AdBlue into the AdBlue tank. Both the nozzle pistol and filler cap of the tank are clearly marked



Code	Size	Carton	Pallet	Barcode
ADBLUE5L	5L	4	160	5061029 210448

CHERRY SNOWFOAM

What the product does;

- Cherry Snow Foam is a durable, slightly alkaline foam detergent with powerful cleaning agents that effectively remove road traffic film and everyday dirt, making it an ideal pre-wash before your contact wash.

How to use the product:

- Apply the foam with a lance for full coverage, leave it on for 2–5 minutes (depending on soiling), and rinse thoroughly with high pressure, ensuring all areas are cleaned; test on an inconspicuous spot if unsure.



Code	Size	Carton	Pallet	Barcode
SNOW5L	5L	4	160	5061029 210325

CAR WASH SHAMPOO

What the product does;

- Car Wash Shampoo is a premium shampoo that utilises specialist surfactants to create a foamy, ultra slick solution to break down dirt and allow you to safely clean your paintwork. Car Wash Shampoo is anti corrosive and suitable for bare steel also, ideal for older vehicles which may have stone chips or exposed areas of mild steel.

How to use the product:

- Ensure the surface is cool, rinse loose dirt, mix 15–30ml of product with 5L of warm water, apply with a wash mitt from top to bottom, rinse thoroughly, and dry with a towel—safe for all paint types and LSP.



Code	Size	Carton	Pallet	Barcode
CARSH5L	5L	4	160	5065015 010913

ULTRA TFR: TRAFFIC FILM REMOVER

What the product does;

- Ultra TFR is a concentrated formula that provides a deep clean for various surfaces across a wide range of industries, including motor, farming, boating, and cleaning. It can be used manually or with a power washer, remaining effective in hot, cold, and hard water, and offers an economical dilution ratio of up to 200:1.

•

How to use the product:

- Apply via a jet lance – or add 100 – 200ml per bucket of Hot or Cold Water. Do not allow product to dry.



Code	Size	Carton	Pallet	Barcode
TFR5L	5L	4	160	5065015 010906

COOLANT ANTI FREEZE

What the product does;

- This ready-to-use coolant/antifreeze is designed to protect your vehicle's engine from overheating and freezing in extreme temperatures. It helps maintain optimal engine temperature, prevents corrosion, and ensures smooth operation throughout the year.

How to use the product:

Simply pour the ready-to-use coolant/antifreeze into your vehicle's radiator or coolant reservoir to ensure optimal engine performance and protection.



Code	Size	Carton	Pallet	Barcode
FREEZEN1L	1L	12	828	5061029 212541
FREEZEN5L	5L	4	160	5061029 212534





HOME RANGE

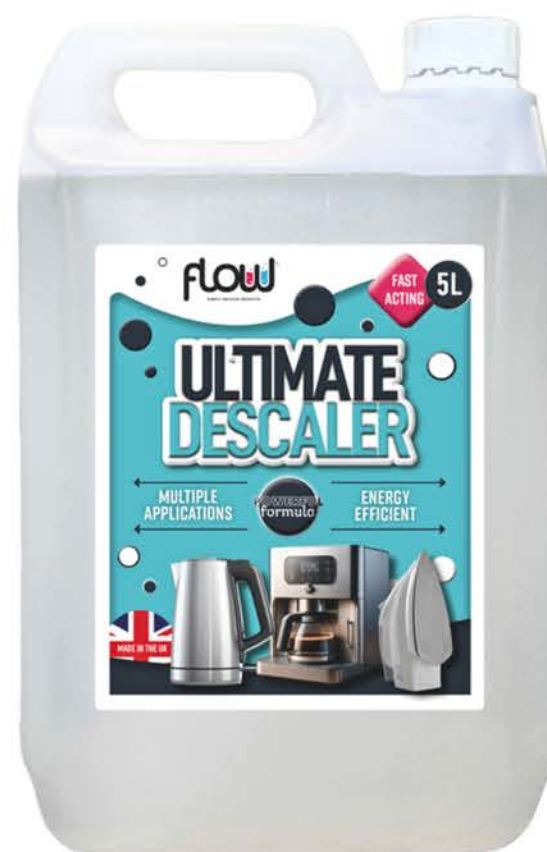
ULTIMATE DESCALER

What the product does;

- An efficient and powerful multi-purpose descaler that effectively removes limescale on contact leaving your appliances clean and fresh with noticeably improved performance. Alcohol-free, animal cruelty-free and biodegradable

How to use the product:

- Apply directly to affected areas, leave for a few minutes, then scrub or wipe away to remove limescale and restore appliance performance.



Code	Size	Carton	Pallet	Barcode
DESCALE5L	5L	12	828	5061029 210035

WHITE VINEGAR

What the product does;

- Our Technical Grade White Vinegar is a versatile, high-performance solution designed to meet the rigorous demands of industrial and technical applications. With its high acidity and purity, this vinegar is ideal for manufacturing processes, cleaning tasks, and chemical applications that require a reliable, consistent solution.

How to use the product:

- For cleaning surfaces, countertops, and floors, dilute white vinegar with water (approximately 1 part vinegar to 3 parts water).
- Use to disinfect, deodorise, and effectively cut through grease and grime on various surfaces.



Code	Size	Carton	Pallet	Barcode
VINEGAR1L	1L	12	828	5061029 210394
VINEGAR5L	5L	4	160	5061029 210387

RODENT & INSECT REPELLENT

What the product does;

- Our Rodent Repellent Spray effectively deters Rats, Mice, Spiders, and other rodents from your home or garden without killing them. The natural ingredients are an effective alternative to a mouse trap or inhumane sticky pads to ensure you are not affecting the ecosystem. Our unique formula will not damage plants, grass and is safe on all hard surfaces

How to use the product:

- Simply spray the areas where rodents are attracted to every 2-3 days for around 2 weeks. Your Rodent friends will soon move on. Suitable for all porous and non porous surfaces. Safe, friendly deterrent



Code	Size	Carton	Pallet	Barcode
RAT5L	5L	4	160	5065015 010043

SHAVER CLEAN & REFRESH

What the product does;

- Shaver Clean and Refresh will keep your electric shaver feeling clean and new. This alcohol-based solution will clean much more hygienically than water and efficiently removes hair and skin particles with ease

How to use the product:

- Apply the solution to the shaver head, brush off debris, rinse if needed, and let it dry.



Code	Size	Carton	Pallet	Barcode
SHAVER5L	5L	4	160	5065015 010036

RUST REMOVER

What the product does;

- Shaver Clean and Refresh will keep your electric shaver feeling clean and new. This alcohol-based solution will clean much more hygienically than water and efficiently removes hair and skin particles with ease

How to use the product:

- Apply the solution to the shaver head, brush off debris, rinse if needed, and let it dry.



Code	Size	Carton	Pallet	Barcode
RUST5L	5L	4	160	5061029 212473



GARDEN RANGE



TOMATO FEED CONCENTRATE

What the product does;

- FlowChem Tomato Feed concentrate is a powerful liquid solution to encourage plant growth. Ideal for growing strong, healthy and high yielding plants. The solution is a 300:1 concentrate.

How to use the product:

- Dilute: 1 capful (15ml) per 7 litres of water.



Code	Size	Carton	Pallet	Barcode
TOMATO5L	5L	4	160	5065015 01077

TOMATO FEED READY TO USE

What the product does;

- FlowChem Tomato Feed Ready To Use is a powerful liquid solution to encourage plant growth. Ideal for growing strong, healthy and high yielding plants.

How to use the product:

- See technical data sheet for full how to use instructions.



Code	Size	Carton	Pallet	Barcode
TOMRTU5L	5L	4	160	5061029 212572

PATH AND PATIO CLEANER

What the product does;

- The perfect cleaning solution for outdoor use and couldn't be easier. Simply Wet and Walk Away. Our premium formula with its special active ingredient safely and effectively removes green staining with ease. Use on a multitude of surfaces such as patios, fencing, driveways, roofs, gutters, artificial grass, caravans and much more. As Wet and Walk Away requires no agitation you can be sure that no damage will be caused in the cleaning process.

How to use the product:

- Our Wet and Walk Away formula has no bleach, caustic, or acids, yet this PH neutral formula has a special active ingredient that will get your patio, fencing, driveways, and most outdoor surfaces looking like new again. Best of all, it couldn't be easier. How to use the product Simply dilute the product up to 5:1 with water (use a stronger solution for badly affected areas). Apply to the surface using a sprayer or watering can. Once a generous layer has been applied simply walk away. You will start to notice results in 2-3 but please allow up to 2 weeks for full results. The product will continue working for months.



Code	Size	Carton	Pallet	Barcode
WET2L	2L	8	400	5061029 211032
WET5L	5L	4	160	5065015 010210



SUPER STRENGTH VINEGAR

What the product does;

Acetic acid, also known as ethanoic acid, is a clear, colourless liquid organic compound with the chemical formula CH_3COOH . It is widely used for many applications and has become an extremely popular raw material. Super strength vinegar, with a higher concentration of acetic acid, is commonly used in gardens to control weeds by drying them out, as well as cleaning garden tools and equipment. It can also help with removing stains from outdoor surfaces like patios, driveways, and fences, while being effective for general household cleaning tasks when diluted.

How to use the product:

- For cleaning, dilute the vinegar with water (about 1 part vinegar to 1-2 parts water), then apply to surfaces like patios, countertops, or garden tools.



Code	Size	Carton	Pallet	Barcode
SUPERV5L	5L	4	160	5061029 212077

OUTDOOR CLEANER

What the product does;

- Outdoor Cleaner and Disinfectant is the ultimate outdoor cleaner that can help you tackle a wide range of outdoor cleaning jobs. This versatile formula can be used to tackle many outdoor jobs and is pet safe once dry.

How to use the product:

- Pour over your patio or spray area liberally. Scrub (if necessary). Leave for a few hours. Rinse with water. Wait to dry. Repeat if necessary



Code	Size	Carton	Pallet	Barcode
OUTDOOR5L	5L	4	160	5065015 010456



ACETIC ACID PATH & PATIO

What the product does;

- Acetic Acid Path and Patio Cleaner is the ideal solution for maintaining the cleanliness and appearance of your outdoor surfaces. Its powerful formula is specifically designed to remove stubborn dirt, stains, and residues that can accumulate on paths, patios, and driveways over time. With its high-strength acetic acid, this product effectively cleans without the need for harsh chemicals, providing a safe and eco-friendly alternative.

How to use the product:

- Coverage 43.5 square meters – Dilution: Mix 1 part of the product with 3 parts of clean water to create the cleaning solution. – Application: Apply the solution liberally to the surface, ensuring it is fully covered – Maximum Application Rate: Use at a maximum rate of 30ml per m³ for optimal cleaning results – Repeat if Needed: For stubborn stains or heavy build-up, reapply the solution after a few days – Safety: Always wear protective gloves and safety glasses when handling the product to avoid contact with skin and eyes.



Code	Size	Carton	Pallet	Barcode
ACETIC2L	2L	8	400	5061029 211018
ACETIC5L	5L	4	160	5065015 010210

LEISURE RANGE



PINK TOILET RINSE

What the product does;

- Pink Toilet Rinse is a premium concentrated formula developed for the clean water tank and freshwater flush system of chemical toilets in the camping, caravanning and boating leisure industry. It can also be used as a powerful cleaner for toilets, sinks, urinals, and washrooms. Utilising specialist UK sourced surfactants and essential oils, Pink Toilet cleaner will clean and leave behind a very pleasant scent. The non-staining formula is biodegradable and contains premium UK sourced raw materials.

How to use the product:

- Add 200-300ml of product to your flush tank for every 1 Litre of water to create your flush solution. If you require a stronger fragrance, simply increase the ratio of product to water. Compatible with all caravans, motorhomes, and portable toilets.



Code	Size	Carton	Pallet	Barcode
PINK2L	2L	8	400	5061029 210745
PINK5L	5L	4	160	5065015 010074

flow

BLUE TOILET RINSE

What the product does;

- Blue Toilet Cleaner is a premium concentrated and pleasantly perfumed liquid specially developed for the waste tank of chemical toilets in the camping, caravanning, and boating leisure industry. Using specialist raw materials to help make the task of emptying the toilet tank more pleasant by removing odours and breaking down the waste so it is easier to dispose of. Blue Toilet Cleaner is compatible with all toilet cleaners, motorhomes, and portable toilets. The non-staining formula is biodegradable and contains premium UK sourced raw materials.

How to use the product:

- Add 200-300ml of product to your waste tank. Follow this with 1 Litre of water to activate the solution. Use every 3-4 days to keep foul odours at bay and ensure all waste is broken down. Compatible with all caravans, motorhomes, and portable toilets



Code	Size	Carton	Pallet	Barcode
BLUE2L	2L	8	400	5061029 210752
BLUE5L	5L	4	160	5065015 010074

TOP & BOTTOM ECO TOILET FLUID

What the product does;

- Top and Bottom Toilet Fluid is a premium concentrated and pleasantly perfumed liquid specially developed to be used in both the waste tank and flush tank of chemical toilets in the camping, caravanning and boating leisure industry.

How to use the product:

- Waste Tank – Add 200–300ml of product to your waste tank. Follow this with 1 Litre of water to activate the solution. Use every 3–4 days to keep foul odours at bay and ensure all waste is broken down. Flush Tank – Add 200–300ml of product to your flush tank for every 1 Litre of water to create your flush solution. If you require a stronger fragrance, simply increase the ratio of product to water.



Code	Size	Carton	Pallet	Barcode
TOP5L	5L	4	160	5065015 010241

flow

PINK & BLUE COMBO 2L

What the product does;

- Caravan/Motorhome toilets can become dirty and smelly very quickly, particularly in the summer months so chemical treatment is essential. The FlowChem Blue and Pink Combo set is the perfect pack to keep your motorhome or caravan toilet clean and fresh!
- Blue – Add 200–300ml of product to your waste tank. Follow this with 1 Litre of water to activate the solution. Use every 3–4 days to keep foul odours at bay and ensure all waste is broken down.

How to use the product:

- Add 200–300ml of product to your flush tank for every 1 Litre of water to create your flush solution. If you require a stronger fragrance, simply increase the ratio of product to water.



Code	Size	Carton	Pallet	Barcode
BPCOMBO	2L	4	200	5061029 210431

flow

JANITORIAL RANGE



MIRACLE FLOOR & SURFACE CLEANER

What the product does;

- Lemon Floor cleaner uses specialist surfactants to safely break down dirt, grease and oils making this an ideal product to use on all hard surfaces. The Lemon fragrance is long lasting and will leave your home smelling fresh for days.

How to use the product:

- Just dilute 2-4 capfuls of liquid in 5 litres of warm water and use it with a mop or cloth to get rid of grime and leave everything fresh and clean.



Code	Size	Carton	Pallet	Barcode
FLOOR5L	5L	4	160	5061029 210899

MIRACLE FLOOR & SURFACE CLEANER

What the product does;

- It powers through to the source of the blockage to resolve the issue and give you free running water again. Use regularly to ensure pipes and drains remain problem free. / Gets to work in just 5 minutes. Safe for use on all pipes. Dissolves grease, hair and soap. For indoor and outdoor use. Protect your sinks and drains by using this drain unblocker on a regular basis.

How to use the product:

- Simply add 1 Litre of product to the affected sink or drain and allow the product to work for at least 5 minutes. For best results, leave for up to 1 hour and then flush through with hot water. If problem persists, treat again, and leave solution overnight. Suitability Safe to use on all pipes and drains.



Code	Size	Carton	Pallet	Barcode
DRAIN5L	5L	4	160	5065015 010760

THICK COMMERCIAL BLEACH

What the product does;

- Providing an efficient and effective clean every time. The thick formulation clings to surfaces, ensuring long lasting performance. It can be used neat in toilets, or diluted for more general cleaning tasks



Code	Size	Carton	Pallet	Barcode
BLEACH5L	5L	4	160	5061029 210912

ISOPROPYL ALCOHOL 99%

What the product does;

- The chemical formula of isopropyl alcohol is $\text{CH}_3\text{CHOHCH}_3$, and it is very similar to Ethanol in its properties. This makes it an effective cleaning agent which is used in many domestic and industrial purposes.



Code	Size	Carton	Pallet	Barcode
IPA1L	1L	12	828	5061029 210370
IPA5L	5L	4	160	5065015 010272

PET RANGE



PET MAGIC CARPET CLEANER

What the product does;

- Using a mix of specialist surfactants, cleaning agents and essential oils, Pet Magic Carpet Cleaner not only cleans but leaves the area smelling fresh like Fresh Linen. A hazardous free making it the perfect cleaner for Pet owners. Compatible with all extraction carpet cleaners it is a must for your kitchen cupboard.

How to use the product:

- Mix your cleaning solution with water as directed below. Heavy soiling – Mix 1:1 (1 part solution with 1 part water). Medium soiling – Mix 1:5 Light soiling – Mix 1:10 Remove excess liquid or soiling with a damp cloth or similar before applying. Spray the affected area with your cleaning solution or refer to the manufacturer's instructions if using with a carpet cleaning machine: Please keep pets and young children away from the area during this time, they can return once the area is dry. Suitability It is suitable for use on carpets and upholstery and can be used with all carpet cleaners or by hand.



Code	Size	Carton	Pallet	Barcode
MAGIC5L	5L	4	160	5065015 010005



PET DISINFECTANT BUBBLEGUM

What the product does;

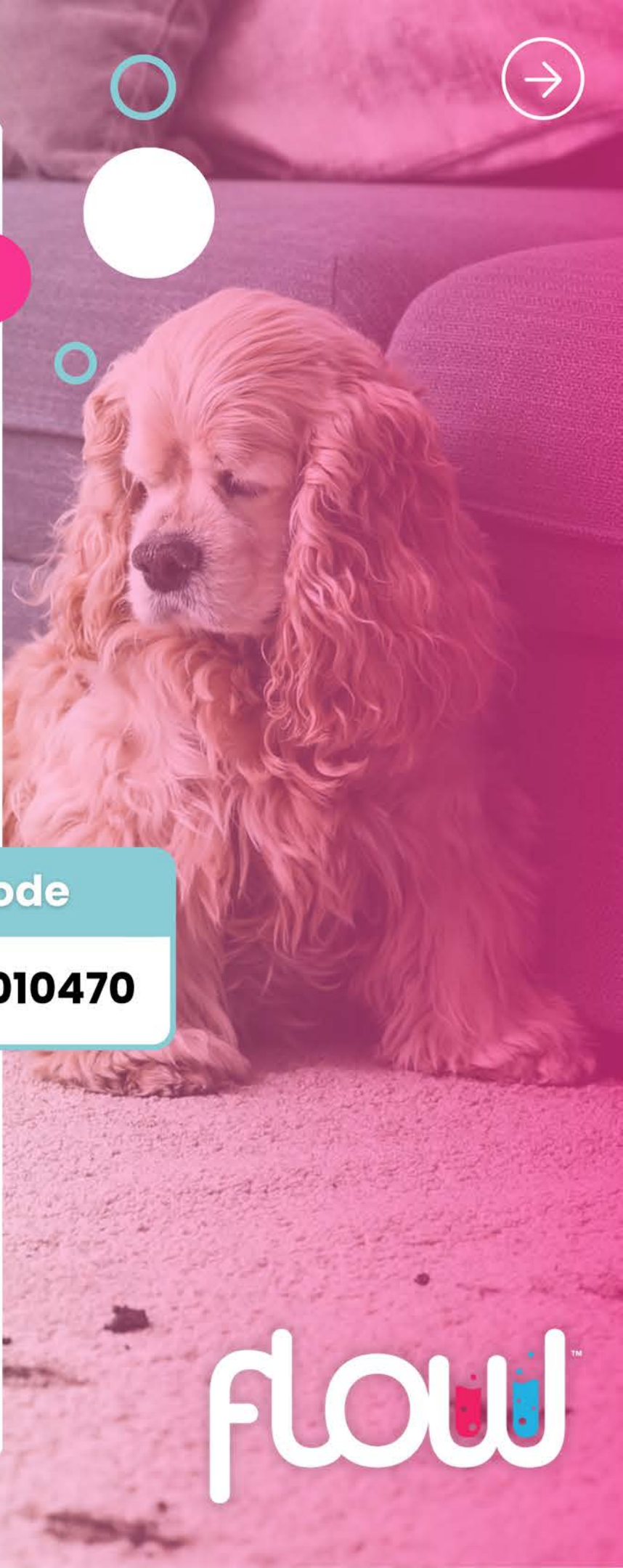
- Pet Disinfectant is a powerful cleaner that is perfect for Pet owners. Using specialist raw materials and essential oils, Pet Disinfectant will remove the unwanted stains and smells that your pet leaves behind and replace these with a pleasant bubblegum fragrance.

How to use the product:

- Mix your cleaning solution with water as directed below. Heavy soiling – Mix 1:1 (1 part solution with 1 part water). Medium soiling – Mix 1:5 Light soiling – Mix 1:10 Remove excess liquid or soiling with a damp cloth or similar before applying. Spray the affected area with your cleaning solution or refer to the manufacturer’s instructions if using with a carpet cleaning machine: Please keep pets and young children away from the area during this time, they can return once the area is dry. Suitability It is suitable for use on carpets and upholstery and can be used with all carpet cleaners or by hand.



Code	Size	Carton	Pallet	Barcode
PETB5L	5L	4	160	5065015 010470



PET DISINFECTANT LEMON

What the product does;

- PetMagic Disinfectant is a powerful cleaner that is perfect for Pet owners. Using specialist raw materials and essential oils, PetMagic Disinfectant will remove the unwanted stains and smells that your pet leaves behind and replace these with a pleasant Bubblegum fragrance. The premium formula is fully biodegradable and uses a high level of active ingredient, natural fragrance oils and surfactants to deliver an efficient and pleasurable user experience. Safe to use on all washable surfaces, floors, walls, cages, feeding bowls, bedding, toys, runs, yards, carpets, toilets, drains and so much more.

How to use the product:

- Mix your cleaning solution with water as directed below. Heavy soiling – Mix 1:1 (1 part solution with 1 part water). Medium soiling – Mix 1:5 Light soiling – Mix 1:10 Remove excess liquid or soiling with a damp cloth or similar before applying. Spray the affected area with your cleaning solution or refer to the manufacturer’s instructions if using with a carpet cleaning machine: Please keep pets and young children away from the area during this time, they can return once the area is dry. It is suitable for use on carpets and upholstery and can be used with all carpet cleaners or by hand.



Code	Size	Carton	Pallet	Barcode
PETL5L	5L	4	160	5061029 210400

