



NISSA

FALL / WINTER '19



NISSA Fall / Winter '19

The NISSA Fall / Winter '19 collection plays with metallic floral prints, midi lace dresses, and crimson satin to celebrate playful and colorful femininity.

The collection is a reflection on personal style, visually showing how to mix and layer each piece in an individual and unique way.

Fresh, stylish, and new, without lacking in elegance or timelessness.

Designed for the modern woman who loves adventure and a night out on the town.

Passionate and poetic, the #NISSAWoman continues to be faithful to her personal style that mixes old with new.







Tiered tulle, lace & silk dress



Velvet dress with sequin and crystal embroidery



Tulle midi skirt with golden stars
Velvet belt with golden buckle





Tulle & velvet midi dress with golden stars



Dusty pink silk dress with star lace



Silk chiffon straight dress with star lace





Star lace midi dress

Star lace high short dress

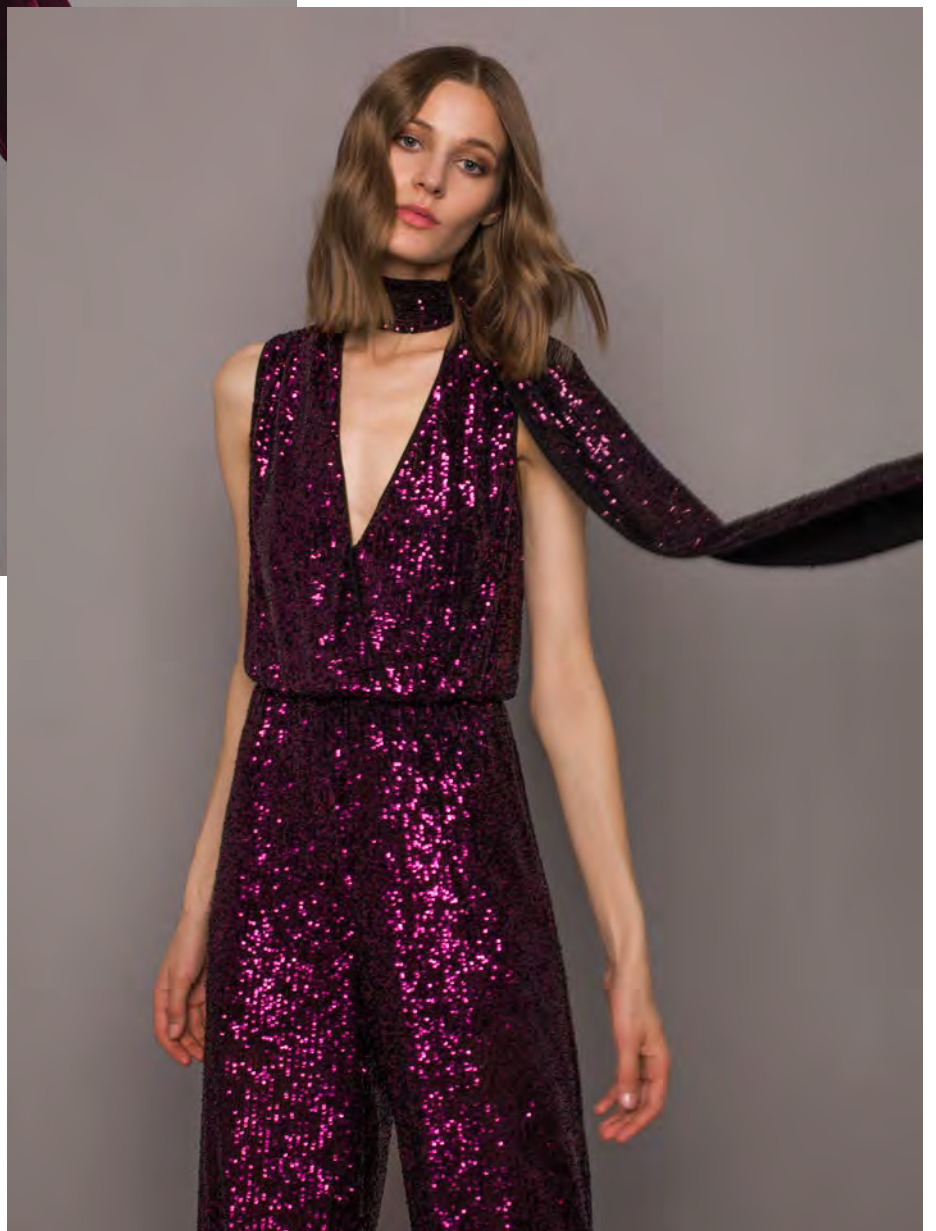




Velvet belt with crystal buckle
Sequined purple jumpsuit with scarf



Velvet two-piece suit



Sequined purple jumpsuit with scarf





Sequined purple top
Floral macrame lace dress





Printed vei midi dress
with lace inserts



Printed veil short dress
with lace details



Viscose chiffon blouse with gold details
Printed viscose chiffon dress





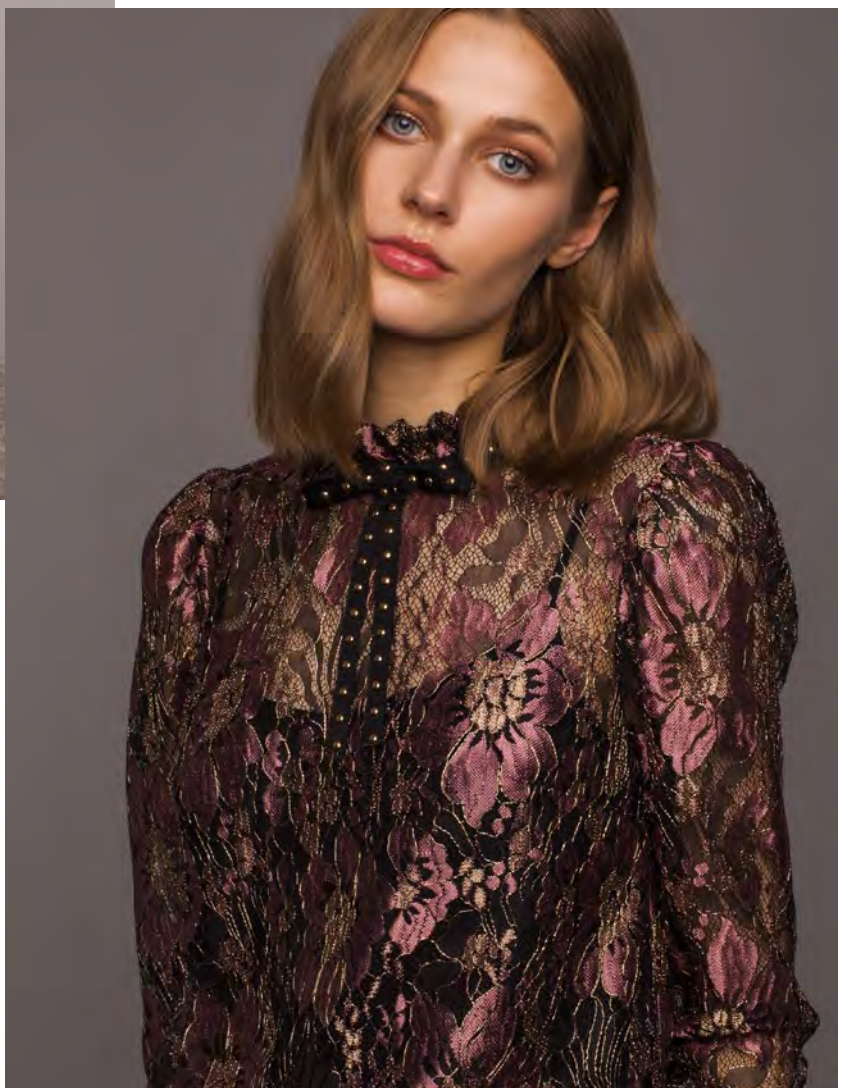
Velvet midi dress with handmade
floral applique

Velvet straight dress with floral applique





Rose gold lace pleated gown



Rose gold lace top with bow

Rose gold lace midi
asymmetrical dress





Rose gold lace midi asymmetrical dress

Rose gold lace pleated gown





Velvet mini dress with sequin embroidery
Silk chiffon dress with velvet lace





Boucle jacket with faux leather sleeves
Lace mini dress with ruffles





Cupro viscose printed dress with bow detail







Double breasted velvet jacket
Slim velvet pants

Silk chiffon midi dress





Viscose satin blouse
Sequined black pants
Velvet belt with crystal buckle



Viscose satin mini dress with tassels



Velvet belt with golden buckle





Off-the-shoulder sweatshirt with tulle
Tulle & lace asymmetric skirt



Faux leather flared dress with lace
Silver metal buckle belt
Faux leather wrap jumpsuit





Faux leather mini dress

Double breasted faux leather jacket with lace sleeves

Faux leather leggings







Animal print silk chiffon dress

Faux leather pants



Off-the-shoulder satin shirt with lace
Faux leather jogger with zip tape

Jacquard two piece suit
with velvet trimming







Tulle & lace midi dress

Velvet & tassel lapel sequined jacket

Velvet belt with crystal buckle

Viscose satin dress with velvet & crystal details



Viscose satin dress with
velvet & crystal details

Velvet two piece suit with crystals





Sequined green mini dress

Sequined green midi dress





Head Office
82 Baicului Street
021784, Bucharest, Romania

Mihaela Bildea
Export Coordinator

E-mail: mbildea@nissa.ro
Mobile: +40 731 790 270
Phone: +4021 250 5199



www.nissa.com



