

A photograph of two women standing outdoors in front of a large window. The woman on the left has blonde hair and is wearing a white sleeveless dress. The woman on the right has dark curly hair and is wearing a pink long-sleeved dress. Both are smiling.

Luella
Colour your life

2022
SUMMER
LINEN COLLECTION

lookbook

www.luellafashion.com



EDITORIAL

Breeze through summer days in our 100% linen collection.

Bright and breathable with relaxed silhouette our linens dresses and separates are perfect for any occasion at home or effortless holiday packing.

Needing less water to grow than other fabrics linen is one of the most biodegradable and naturally breathable fabrics - it's no surprise our linen collection is one of our bestselling ranges.

We love colour and this year's collection features summer hues from fabulously vibrant cobalt, emerald and soft hazy pastel pinks and blues.

BEST WISHES,

Alison Townshend

FOUNDER & CREATIVE DIRECTOR

WWW.LUELLAFASHION.COM



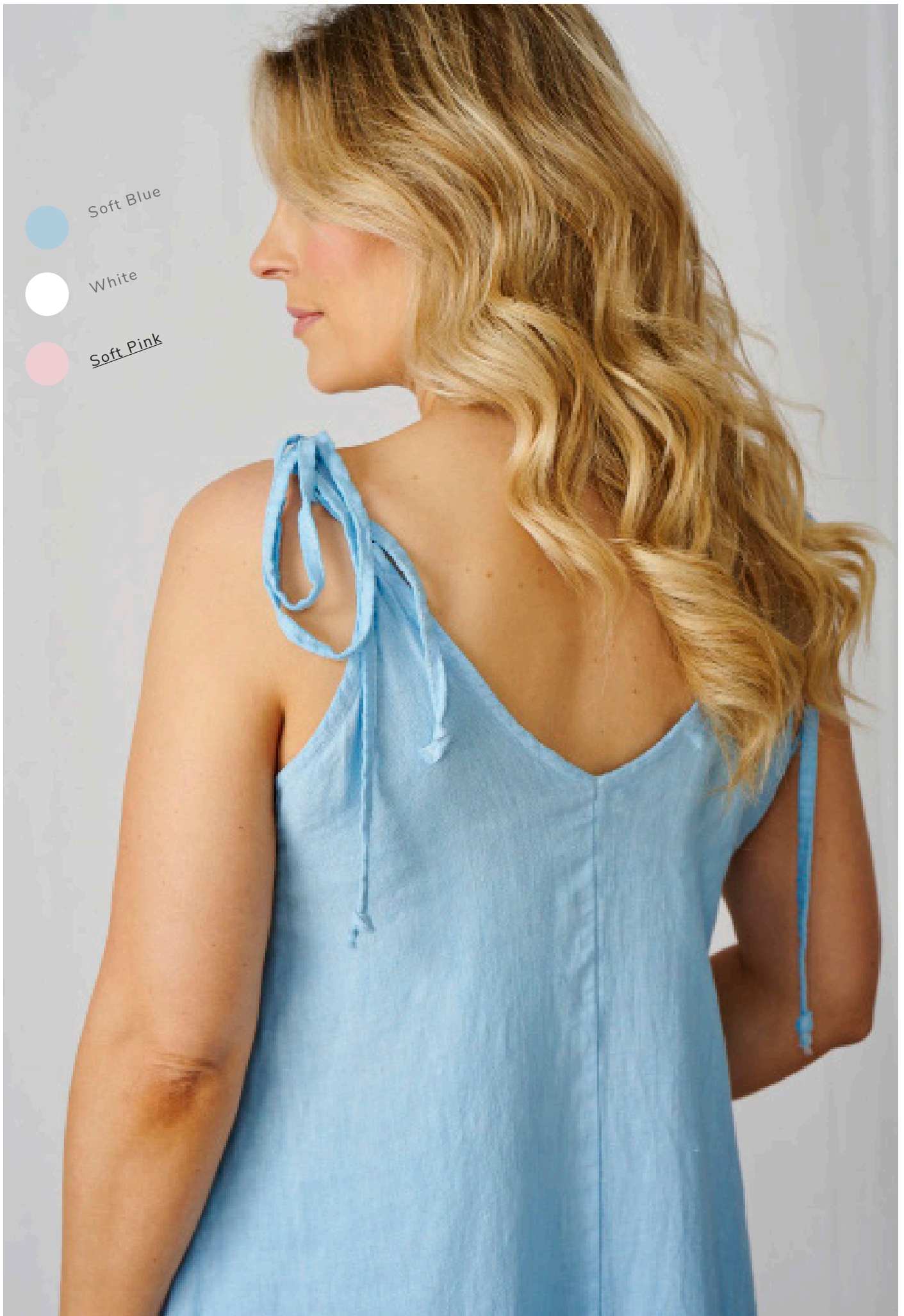
SUMMER




2022

NANCY DRESS



NANCY DRESS We love the feminine swing of this pretty pink pure linen dress. With front and back V-neck, the tie shoulder straps allow the perfect fit. The slightly dipped hem falls flatteringly on the calf. You'll feel light and breezy in this summer essential.



-  Soft Blue
-  White
-  Soft Pink



ALISON TUNIC



ALISON LINEN TUNIC (EMERALD) Our popular Alison linen tunic is available in several colours. It has a relaxed fit, with pockets, and is perfect in the summer months to wear alone or styled with trousers.



Soft Blue



Salmon



Emerald

White



LAYLA TOP



White



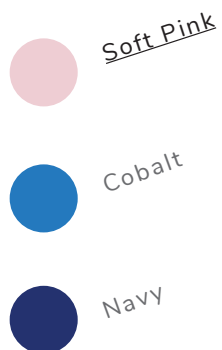
Navy

LAYLA TOP Our Layla Off-The-Shoulder Top in crisp white soft, breathable linen fabric is sure to be a versatile favourite. Featuring a fully elasticated neckline and elasticated hem puff sleeves, it looks great paired with a maxi

CHLOE DRESS



CHLOE DRESS The pure linen Chloe dress has fabulous three-quarter length fluted sleeves. The soft relaxed collar and V-neck are effortlessly stylish, making this an easy-to-wear shirt style dress or layer with trousers for cooler days.





Emerald

Soft Blue

White



AVA DRESS

With its A-line shape, this pretty blue sleeveless pure linen midi dress is perfect for carefree summer dressing. It features a shirred V-neck and the gentle gathering at the back creates a flattering line.

SAHARA DRESS



Cobalt



Emerald



Soft Pink

SAHARA LINEN V-NECK

DRESS Stay cool and bright in this emerald breathable mid-length linen sleeveless dress. It features side pockets and a wide stitched V-neck, creating a flattering pleat at the front.







CONTACT US

Orders can be placed via your agent, via your online account or by contacting Team Luella

E: sales@luellafashion.co.uk
T: +44 (0) 1454 238940

www.luellafashion.com





WWW.LUELLAFASHION.COM