

RE:SIN



HANDCRAFTED IN JAPAN

HANDCRAFTED IN JAPAN

HANDCRAFTED IN JAPAN

THE AMBER COLLECTION



AMBER
HANDCRAFTED

MAZZUCHELLI
ZEISS



IT'S NOT A SIN TO RE:SIN

A COLLECTION
OF THE LATEST
AMBER EYEWEAR

HANDCRAFTED IN JAPAN

ABOUT RE:SIN

RE:SIN is a company from Poland, founded by two sisters who believe in the idea of responsible and sustainable fashion. They are aware that every decision you make in life has an impact on your surroundings.

RE:SIN team cares about every single stage of production: from carefully choosing the materials from which each set of glasses is made, to selecting companies to cooperate with. The company works with experts in the eyewear industry that use high quality materials, which are ecological and premium, like the biodegradable Mazzucchelli acetate from the Be Green collection and Zeiss lenses. On top of that offering, vegan eyewear cases made of pineapple leaves fiber.

However, the most important element of RE:SIN glasses, what makes them extraordinary and unique, are the amber adornments. Amber is a stone that has survived 40 million years, contains the magic and history of the world, and also becomes mesmerizing in the rays of the sun. Vogue UK called it jewelry for the eyes.

Amber in combination with classicly shaped frames and bold colors makes RE:SIN glasses intriguing and timeless.



Monika & Karolina
RE:SIN founders

MEMBERSHIPS

RE:SIN company is a member of the exclusive Ile Maison Club based in New York. Ile Maison represents a collective of professionals dedicated to art, innovation, sustainability, artful living, and well-being.

RE:SIN won the ÎM ART Award. Ile Maison recognizes Art & Design products for space and lifestyle designed to inspire Artful Living. This award recognizes eco-luxury brands that show a legitimate commitment to environmental sustainability and ethical initiatives.



Amber shimmers in the sun, attracting attention, adding uniqueness and originality.

WHY AMBER

The history of the company begins at the Baltic Sea where amber meets Greek mythology. This special stone was already known in antiquity. Over thousands of years, the Amber Road was an ancient trade route for the transfer of amber from coastal areas of the North Sea and the Baltic Sea to the Mediterranean Sea. **Currently, Poland is the world capital of amber.**

A popular Polish legend says that amber nuggets are the debris of the Baltic sea goddess Jurata's palace. Her magnificent underwater residence, made entirely of amber, was shattered to pieces by the mighty god Perkun when he found out she was having an affair with a fisherman.

The names of the models of the glasses are taken from Greek mythology such as from the Oceanids - goddesses and sea nymphs. These magical and mysterious deities that inhabited the mythological seas are the personification of intelligence, wisdom, and prosperity. Thanks to RE:SIN you can experience this great mystery of magic and power.

Amber shimmers in the sun attracting attention, adding uniqueness and originality.

CLIO

the water nymph whose name
means giver-of-fame

available colors

purple

coffee

black



Amber adornments
Mazzucchelli acetate
Zeiss lenses
Made in Japan

Lens: 48 mm
Bridge: 26 mm
Temple: 145 mm





Amber adornments
Mazzucchelli acetate
Zeiss lenses
Made in Japan

Lens: 48 mm
Bridge: 26 mm
Temple: 145 mm

AMPHITRITE

the goddess of the sea

available colors

black

transparent

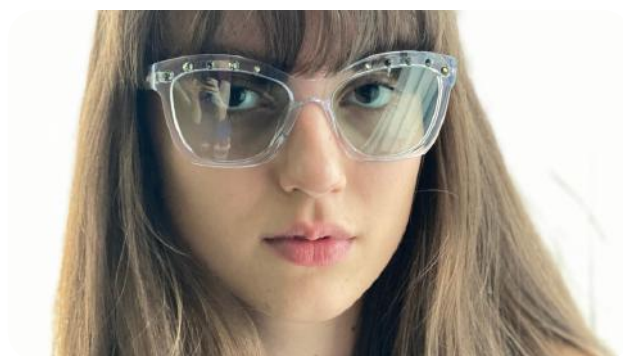
tortoise



Amber adornments
Mazzucchelli acetate
Zeiss lenses
Made in Japan

Lens: 55 mm
Bridge: 18 mm
Temple: 145 mm





Amber adornments
Mazzucchelli acetate
Zeiss lenses
Made in Japan

Lens: 55 mm
Bridge: 18 mm
Temple: 145 mm

METIS

the goddess of good counsel,
planning, and wisdom

available colors

black and white

transparent pink

cream



Amber adornments
Mazzucchelli acetate
Zeiss lenses
Made in Japan

Lens: 55 mm
Bridge: 16 mm
Temple: 145 mm





Amber adornments
Mazzucchelli acetate
Zeiss lenses
Made in Japan

Lens: 55 mm
Bridge: 16 mm
Temple: 145 mm

ELECTRA

the cloud-nymph of the amber-trim,
goddess of amber

available colors

cream

black and white

black



Amber adornments
Mazzucchelli acetate
Zeiss lenses
Made in Japan

Lens: 45 mm
Bridge: 27 mm
Temple: 145 mm





Amber adornments
Mazzucchelli acetate
Zeiss lenses
Made in Japan

Lens: 45 mm
Bridge: 27 mm
Temple: 145 mm

THALASSA

the primordial deity in Greek mythology
the goddess of the sea

available colors

blue

transparent

tortoise



Amber adornments
Mazzucchelli acetate
Zeiss lenses
Made in Japan

Lens: 47 mm
Bridge: 23 mm
Temple: 145 mm





Amber adornments
Mazzucchelli acetate
Zeiss lenses
Made in Japan

Lens: 47 mm
Bridge: 23 mm
Temple: 145 mm

KHLORIS

the goddess of spring, flowers,
and new growth

available colors

green

transparent pink

black and white



Amber adornments
Mazzucchelli acetate
Zeiss lenses
Made in Japan

Lens: 53 mm
Bridge: 16 mm
Temple: 145 mm





Amber adornments
Mazzucchelli acetate
Zeiss lenses
Made in Japan

Lens: 53 mm
Bridge: 16 mm
Temple: 145 mm

PONTUS

an ancient, pre-Olympian sea-god,
one of the Greek primordial deities

available colors

black

green

cream



Amber adornments
Mazzucchelli acetate
Zeiss lenses
Made in Japan

Lens: 56 mm
Bridge: 15 mm
Temple: 145 mm





Amber adornments
Mazzucchelli acetate
Zeiss lenses
Made in Japan

Lens: 56 mm
Bridge: 15 mm
Temple: 145 mm

FORKYS

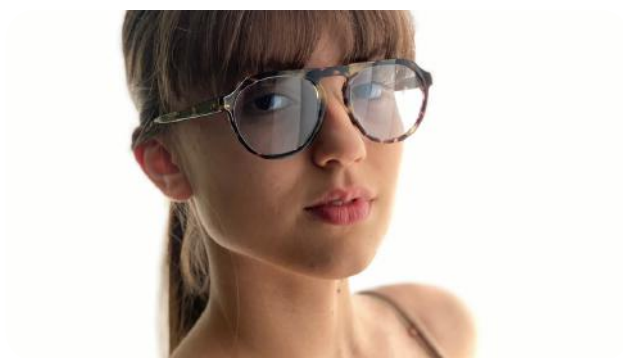
the primordial sea god

available colors

tortoise

brown

black



Amber adornments
Mazzucchelli acetate
Zeiss lenses
Made in Japan

Lens: 54 mm
Bridge: 19 mm
Temple: 145 mm





Amber adornments
Mazzucchelli acetate
Zeiss lenses
Made in Japan

Lens: 54 mm
Bridge: 19 mm
Temple: 145 mm

NEREUS

the sea god called by Homer
“Old Man of the Sea”, noted
for his wisdom

available colors

coffee

tortoise

black



Amber adornments
Mazzucchelli acetate
Zeiss lenses
Made in Japan

Lens: 50 mm
Bridge: 21 mm
Temple: 145 mm



Amber adornments
Mazzucchelli acetate
Zeiss lenses
Made in Japan

Lens: 50 mm
Bridge: 21 mm
Temple: 145 mm



FIND US

Poland, UK, Belgium, USA

W a r s a w
CONCEPT STORE

WARSAW CONCEPT STORE
GALERIA MOKOTÓW
Wołoska 12,
Warszawa

MYSIA 3.

Mysia 3

Alternative department store-former
censorship office.

Slow shopping, dog friendly, fashion stores,
art, inspirations.

pop-up store
2nd floor

**WOLF &
BADGER**

Wolf & Badger is a global online
marketplace for independent brands
storefronts in London and New York

EM
boutique

EM boutique

Premium concept store for women
ul. Szczygła 8, Warsaw

J|N
JAANTE

JAANTE J|N – Fashion
Agency & Sustainable
Showroom
Avenue Louise, 1050
Bruxelles,
Belgium

eter

Eter Boutique – Sheraton

Sopot Hotel
Powstańców Warszawy 6,
81-718 Sopot
Poland

t f h
KONCEPT

TFH Koncept – concept store fashion
design, art Szpitalna 8, Warsaw,
Poland



Perfumeria Quality Missala

Fashion House Shopping Center Klif, 58/72
Okopowa,
Warsaw, Masovian Voivodeship
Poland

STAY CONNECTED WITH US



www.re-sin.com



LinkedIn @re:sin



Facebook
[@resinofficial](https://www.facebook.com/resinofficial)



Instagram
[@re.sin](https://www.instagram.com/re.sin)

office@re-sin.com



RE:SIN