

KAMMÃ
SWIM

2021
2022

LOOKBOOK VOL.02



PAYING HOMAGE TO **INDONESIAN TRADITION** IN CONTEMPORARY **WAYS**

ABOUT US



“**KAMMA Swimwear** is a contemporary articulation of Indonesian culture and heritage. Designed with the modern mind. We aim to make pieces that tell the age-old stories of culture, but can also be appreciated by the present-day woman.”

Welcome to **KAMMA**. Born in 2015, **KAMMA** is a family business run by three founding members. Who wanted to put their love and passion for their culture and heritage, into something that they are passionate about. **KAMMA** aim to provide women with contemporary and eclectic swimwear, with a touch of Indonesian heritage in each piece.

After spending 3 years in Paris as a Fashion designer, **KAMMA's** founding sister has drawn inspiration from this lifestyle through modern Parisian 'la haute couture' and a perfect blend of traditional Indonesian heritage . Designed and made to bring you unique, timeless and bold swimwear pieces to take the pool and beach by storm. Each collection and piece is designed in house, and the focus is to provide modern, sophisticated and creative pieces. Tailored specifically for the woman who loves culture, travel and expressing her personality through her style.

Each piece is made with loving local Indonesian heritage, whilst leaving as little footprint as possible. **KAMMA** want to ensure each product is full of culture and maximum style and luxury. The swimwear collections are all handcrafted with the utmost care and love, and are the perfect pieces for the woman who likes to create her own style. Ranging from handcrafted embroidery by locals in the country of Bali combined with Parisian couture, there's nothing quite like it out there.



COMPANY VALUES

As a slow fashion retailer, they aim to provide excellent quality, luxury garments that take into consideration all aspects of the supply chain. **KAMMA** respect people, the environment and animals.

KAMMA is built on sustainability, preserving their wonderful culture, and exuding local craftsmanship. The brand is focused on quality over quantity, and they ensure every product is made with tender loving care, for the exclusive and stylish woman. To do this they spend a long time on the design process for collections, to ensure they are providing the best quality in both material and design.

‘**KAMMA** apparel is not disposable, it's luxury, sustainable and will last a lifetime.’

OUR FABRICS:

KAMMA garments are made using sustainable textiles from Carvico, these fabrics are generated from pre and post industrial waste that have reached the end of their life but can be recycled for their nylon. The fabric used for **KAMMA swimwear** is ‘vita fabric’- a sustainable techno fabric. Vita is versatile, thin, elegant, soft and breathable making it the perfect fabric to produce **KAMMA swimwear** with, being twice as resistant to chemicals found in suntan cream and chlorine, that damage the majority of swimwear fabrics used on the market.

For **KAMMA**'s ready to wear collection, the fabrics are made from 100% bamboo. Growing mainly in Asia, bamboo is now being used to craft fibre, to create yarn and fabric. Bamboo grows incredibly fast, and is one of the must sustainable plants in the market, and now can be used to create beautiful, elegant pieces to add to your ever-growing collection.

OUR PACKAGING:

KAMMA used biodegradable plastic packaging made from vegetable starch to package all of your orders. Using Cassava bags, this packaging decomposes in nature, is 100% natural so free from any toxins and is completely safe for the environment, meaning wildlife, marine life and the earth are not harmed with the discarding of this packaging after use.





OUR ARTISANS:

All **KAMMA** prints are designed in house by the founder. Providing you with an exclusive designed garment, there's nothing like **KAMMA** out there. They partner with local embroidery artists to create the swimwear and are all hand-made in house in their own manufacturing facility, a completely sustainable and genuine piece that hasn't been mass produced, and cutting out all shipping freight.

SLOW FASHION:

All of **KAMMA** garments are made in house in their small manufacturing facility in Bali. **KAMMA** stands for slow fashion, aiming to ultimately reduce any excess production that would be made through mass production from overseas factories. All **KAMMA** garments are 'made-to-order' meaning what you're getting is exclusive for you, adding luxury and uniqueness to each garment. Doing this means **KAMMA** are able to offer customers small modifications to their garments, making sure what you're getting is high quality that you love and can wear for a long time.

KAMMA BRAND CULTURE:

KAMMA is a family born project, created to share their love of culture, quality and tradition. Being a family run business, the brands ethos is family-minded, all brand relationships are genuinely built on trust and genuine family values.

Their relationships with people are at the core of what **KAMMA** do. All working relationships in the manufacturing facility will always be 100% legal and ensure all workers are fairly treated and protected. **KAMMA** provide a safe, and healthy workplace to all colleagues, including employee health care benefits, to ensure everyone feels and is part of the **KAMMA** family.

DE CHEZ MOI COLLECTION:

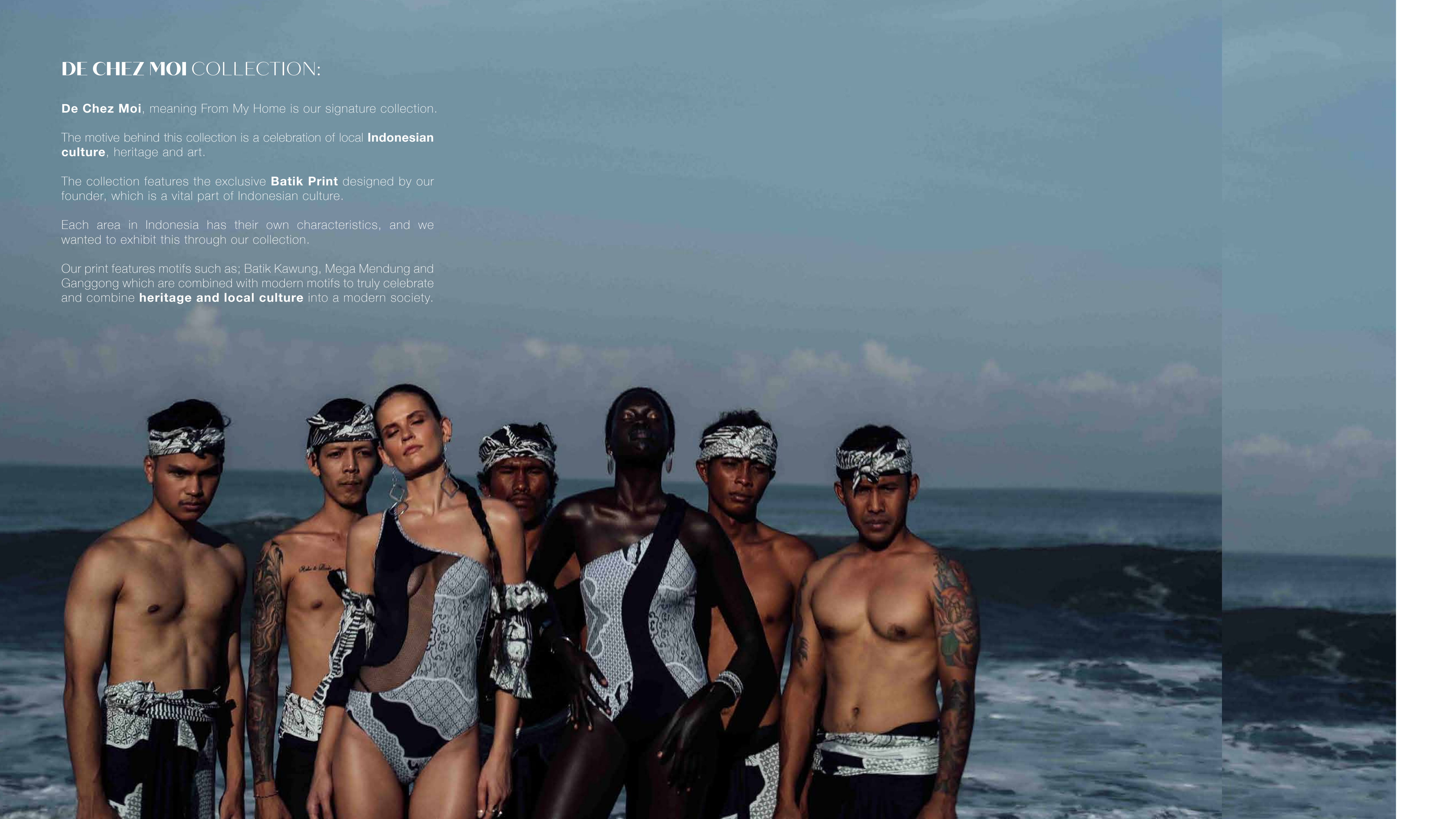
De Chez Moi, meaning From My Home is our signature collection.

The motive behind this collection is a celebration of local **Indonesian culture**, heritage and art.

The collection features the exclusive **Batik Print** designed by our founder, which is a vital part of Indonesian culture.

Each area in Indonesia has their own characteristics, and we wanted to exhibit this through our collection.

Our print features motifs such as; Batik Kawung, Mega Mendung and Ganggong which are combined with modern motifs to truly celebrate and combine **heritage and local culture** into a modern society.





ALULA ONE PIECE

This swimsuit features a one shoulder with see-through fishnet detail at the front and low cut leg. Customizable coverage.

MEDIUM COVERAGE // FULLY LINED

AMBATU ONE PIECE

A full-piece swimwear with a sleek one shoulder silhouette and cut-out on the back. It has medium-coverage briefs with high-cut legs to elongate your frame. Customizable coverage.

MEDIUM COVERAGE // FULLY LINED

FABRIC:

Main - 78% Recycled Polyester, 22% Elastane

Lining - 95% Recycled Polyester, 5% Spandex

COLOR:

Monochrome Batik

Note for all products in Batik Collection:

Pattern placement may look different on each product.

SIZE:

XS / S / M / L / XL / XXL

AMBATU ONE PIECE & ALULA ONE PIECE





FABRIC:

Main - 78% Recycled Polyester, 22% Elastane

Lining - 95% Recycled Polyester, 5% Spandex

SIZE:

XS / S / M / L / XL / XXL

COLOR:

Monochrome Batik

Note for zzall products in Batik Collection:

Pattern placement may look different on each product.

AMONE ONE PIECE

A plunging swimsuit with a deep V triangle back, a flattering ruch feature around the waist and high cut leg. Customizable coverage.

MEDIUM COVERAGE // FULLY LINED

WHOLESALE PRICE - GBP 45



ASA ONE PIECE

Cutout mesh one piece swimsuit with batik patterns. It has a low cut leg and full coverage. Customizable coverage.

FULL COVERAGE // FULLY LINED // ZIPPER BACK CLOSURE

WHOLESALE PRICE - GBP 45





AKUA ONE PIECE



AKUA ONE PIECE

The Akua Surf Suit in Batik pattern is the epitome of elegant surfing. It features a sweetheart neckline, long sleeve, fishnet detail, zipper back closure, and a high cut leg. Customizable coverage.

HIGH CUT LEG // FULLY LINED

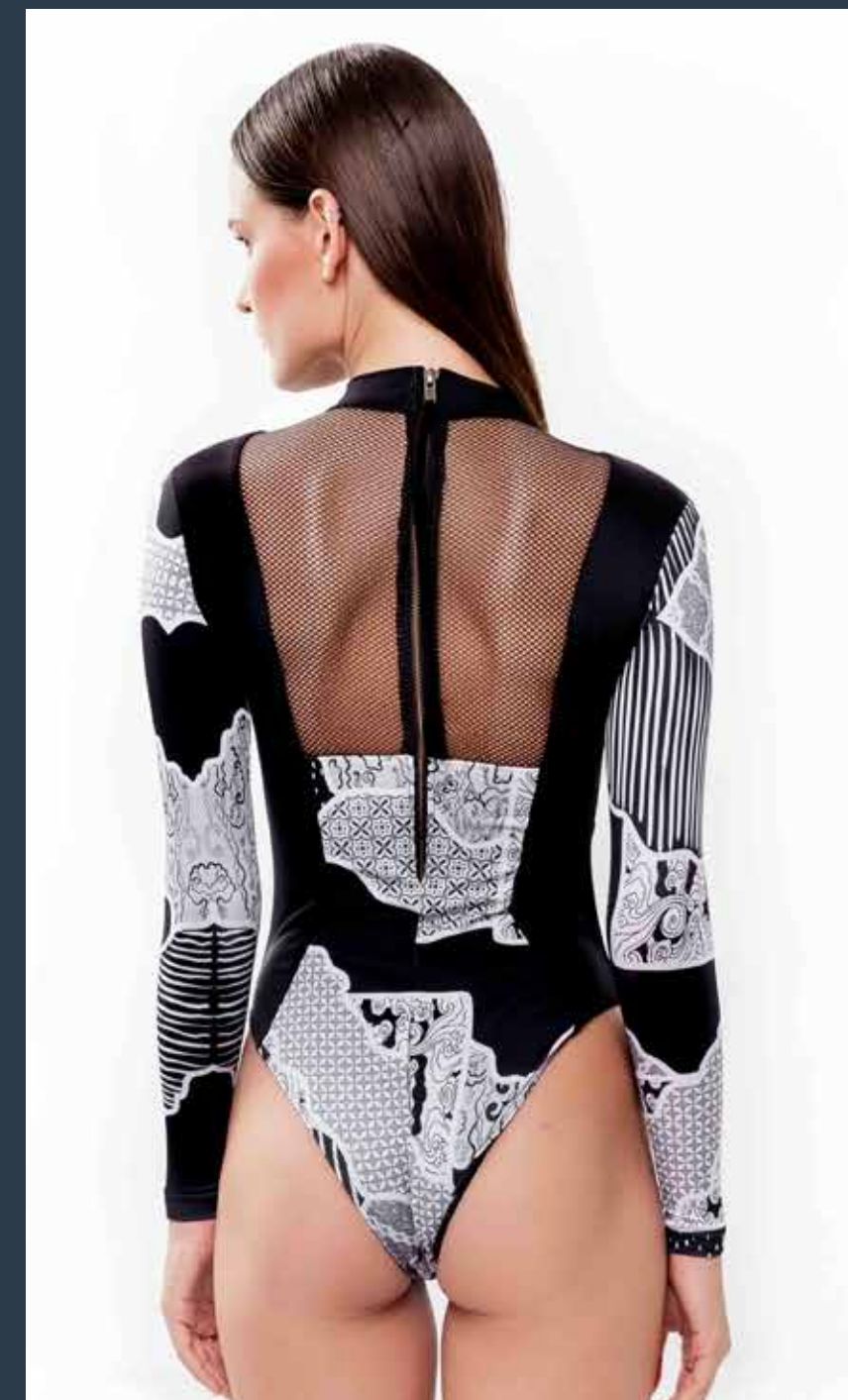
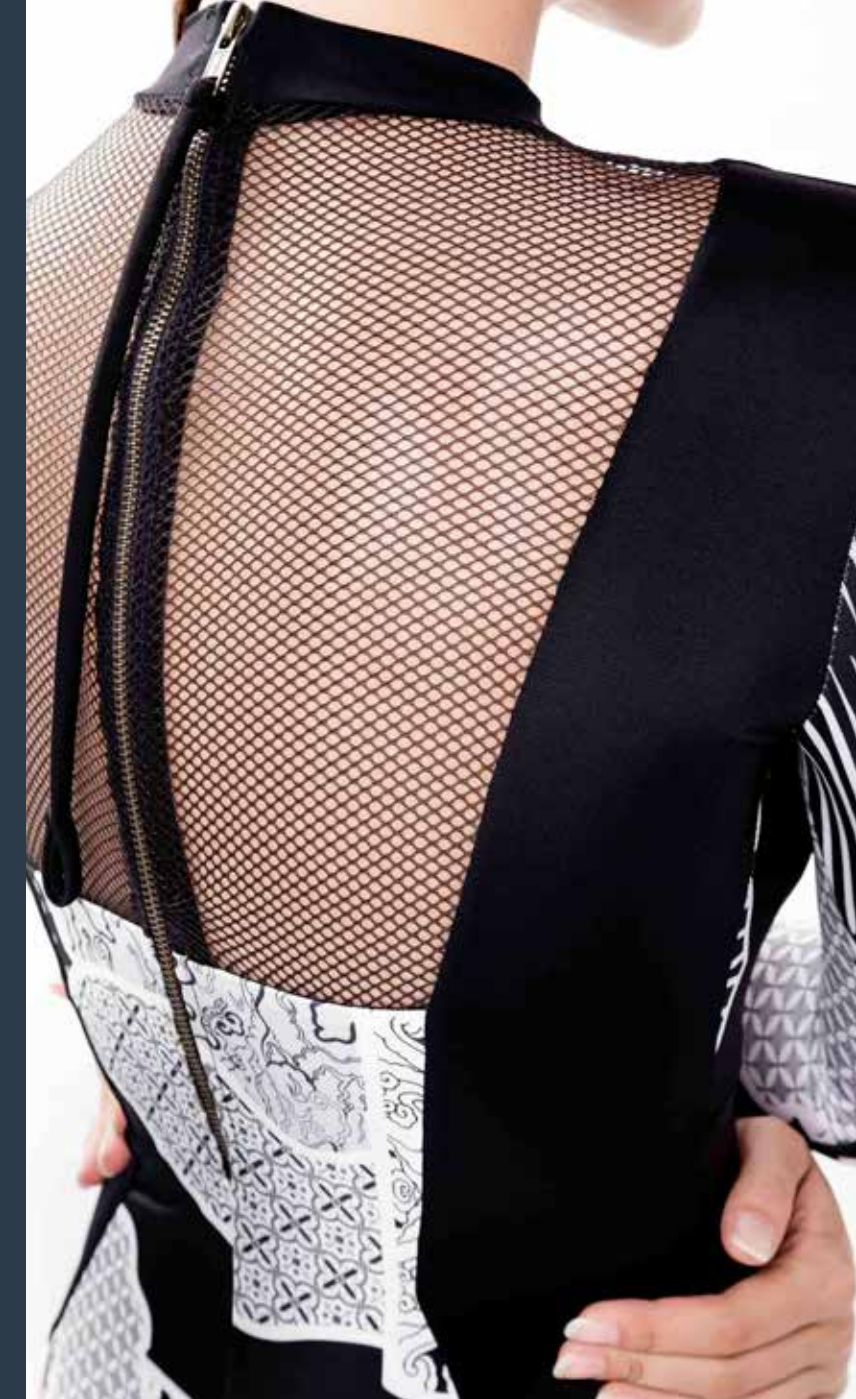
FABRIC:
Main - 78% Recycled Polyester, 22% Elastane
Lining - 95% Recycled Polyester, 5% Spandex

COLOR:
Monochrome Batik

Note for all products in Batik Collection:
Pattern placement may look different on each product.
SIZE:

XS / S / M / L / XL / XXL

WHOLESALE PRICE - GBP 55





FABRIC:

Main - 78% Recycled Polyester, 22% Elastane

Lining - 95% Recycled Polyester, 5% Spandex

SIZE:

XS / S / M / L / XL / XXL

COLOR:

Monochrome Batik

Note for zzall products in Batik Collection:

Pattern placement may look different on each product.



ANAI TOP

This bikini top features a bandeau silhouette and tie closure at the back. Customizable coverage.

MEDIUM COVERAGE // FULLY LINED

WHOLESALE PRICE - GBP 35

ALUN BOTTOM

A completely adjustable tie side bikini with minimum coverage. Customizable coverage.

MINIMUM COVERAGE // FULLY LINED

WHOLESALE PRICE - GBP 25



AMORA TOP & AIDA BOTTOM



FABRIC:

Main - 78% Recycled Polyester, 22% Elastane

Lining - 95% Recycled Polyester, 5% Spandex

SIZE:

XS / S / M / L / XL / XXL

COLOR:

Monochrome Batik

Note for zzall products in Batik Collection:

Pattern placement may look different on each product.

AMORA TOP

Fully adjustable triangle bikini top with tie fastenings in Batik pattern.

MINIMUM COVERAGE // FULLY LINED

WHOLESALE PRICE - GBP 30

AIDA BOTTOM

A flattering high waisted bikini bottom that contours the hips, stomach and waistline. This bikini bottom features batik pattern and fishnet details on the side. Customizable coverage.

MINIMUM COVERAGE // FULLY LINED
// HIGH CUT LEG

WHOLESALE PRICE - GBP 40



WHOLESALE PRICE (TOP) - GBP 35

WHOLESALE PRICE (BOTTOM) - GBP 30



ALBA BOTTOM

A flattering high waisted bikini bottom that contours the hips, stomach and waistline. This bikini bottom features a fixed belt in Batik pattern. Customizable coverage.

MEDIUM COVERAGE // FULLY LINED // HIGH WAISTED

ABANA TOP

This bikini top features exposed underwire at the front and wide adjustable straps.

MEDIUM COVERAGE // FULLY LINED

FABRIC:

Main - 78% Recycled Polyester, 22% Elastane

Lining - 95% Recycled Polyester, 5% Spandex

COLOR:

Monochrome Batik

Note for all products in Batik Collection:

Pattern placement may look different on each product.

SIZE:

XS / S / M / L / XL / XXL

ABANA TOP & ALBA BOTTOM



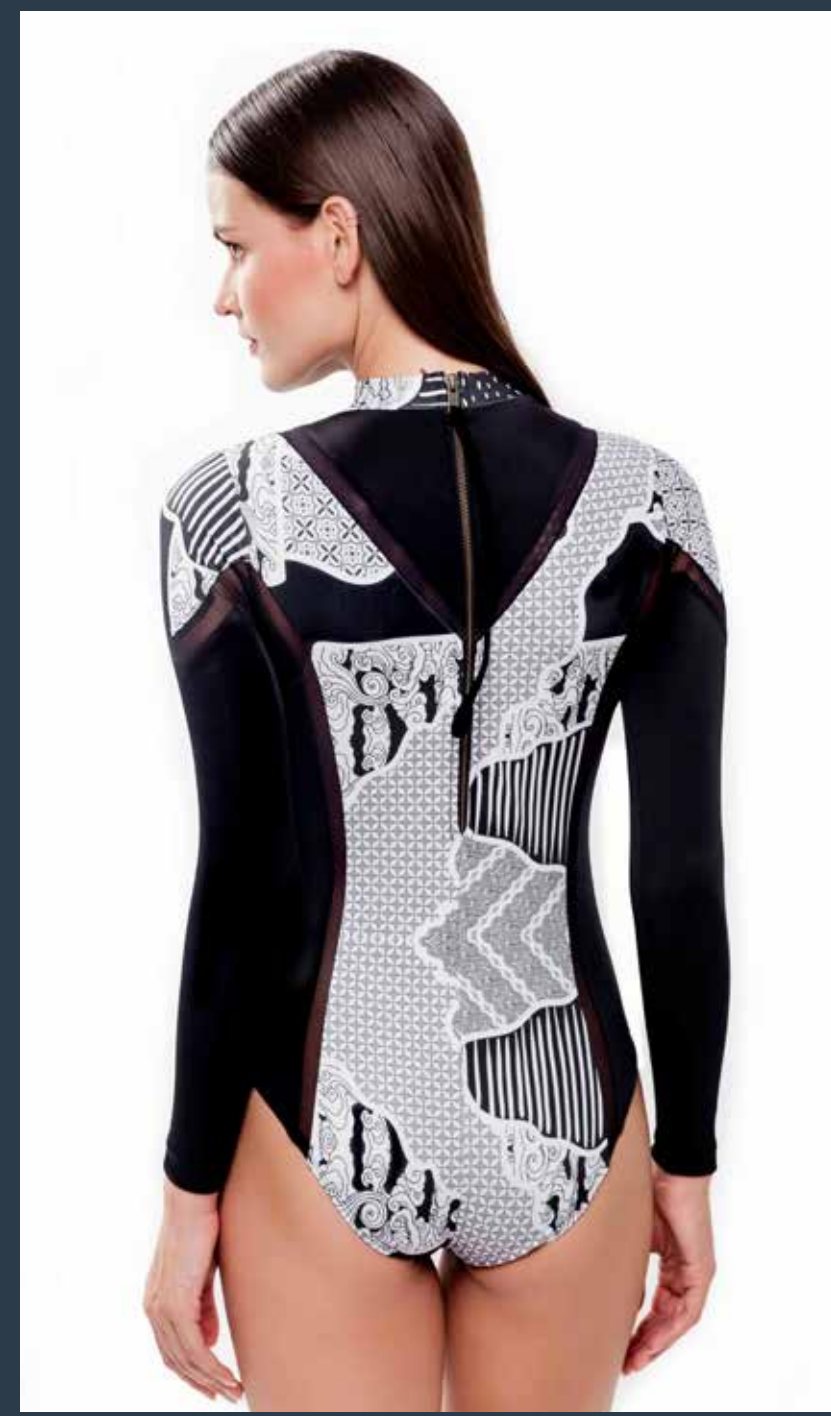


AWAN ONE PIECE



AWAN ONE PIECE

The Amani Surf Suit in Batik pattern gives you perfect functionality and feminine style lines. It features fishnet detail, zipper back closure, and a high cut leg. Customizable coverage.
MESH DETAILS // FULLY LINED
// FULL COVERAGE // LONG SLEEVES



FABRIC:

Main - 78% Recycled Polyester, 22% Elastane

Lining - 95% Recycled Polyester, 5% Spandex

COLOR:

Monochrome Batik

Note for all products in Batik Collection:
Pattern placement may look different on each product.

SIZE:

XS / S / M / L / XL / XXL

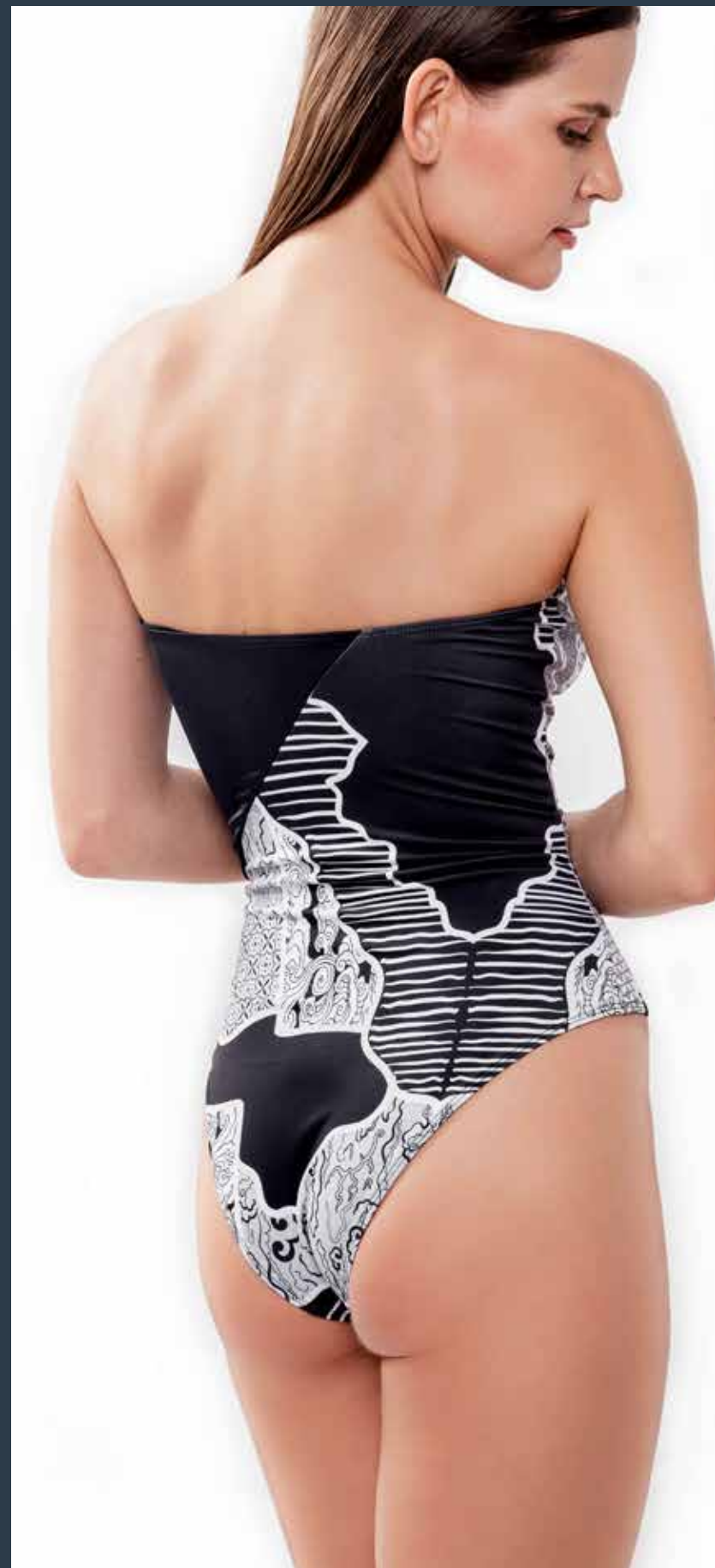
WHOLESALE PRICE - GBP 55



AYANA ONE PIECE

A bandeau one-piece swimwear in Batik pattern with V-shaped hardware detail. Customizable coverage.

MEDIUM COVERAGE // FULLY LINED // BANDEAU NECKLINE



FABRIC:

Main - 78% Recycled Polyester, 22% Elastane

Lining - 95% Recycled Polyester, 5% Spandex

COLOR:

Monochrome Batik

Note for all products in Batik Collection:

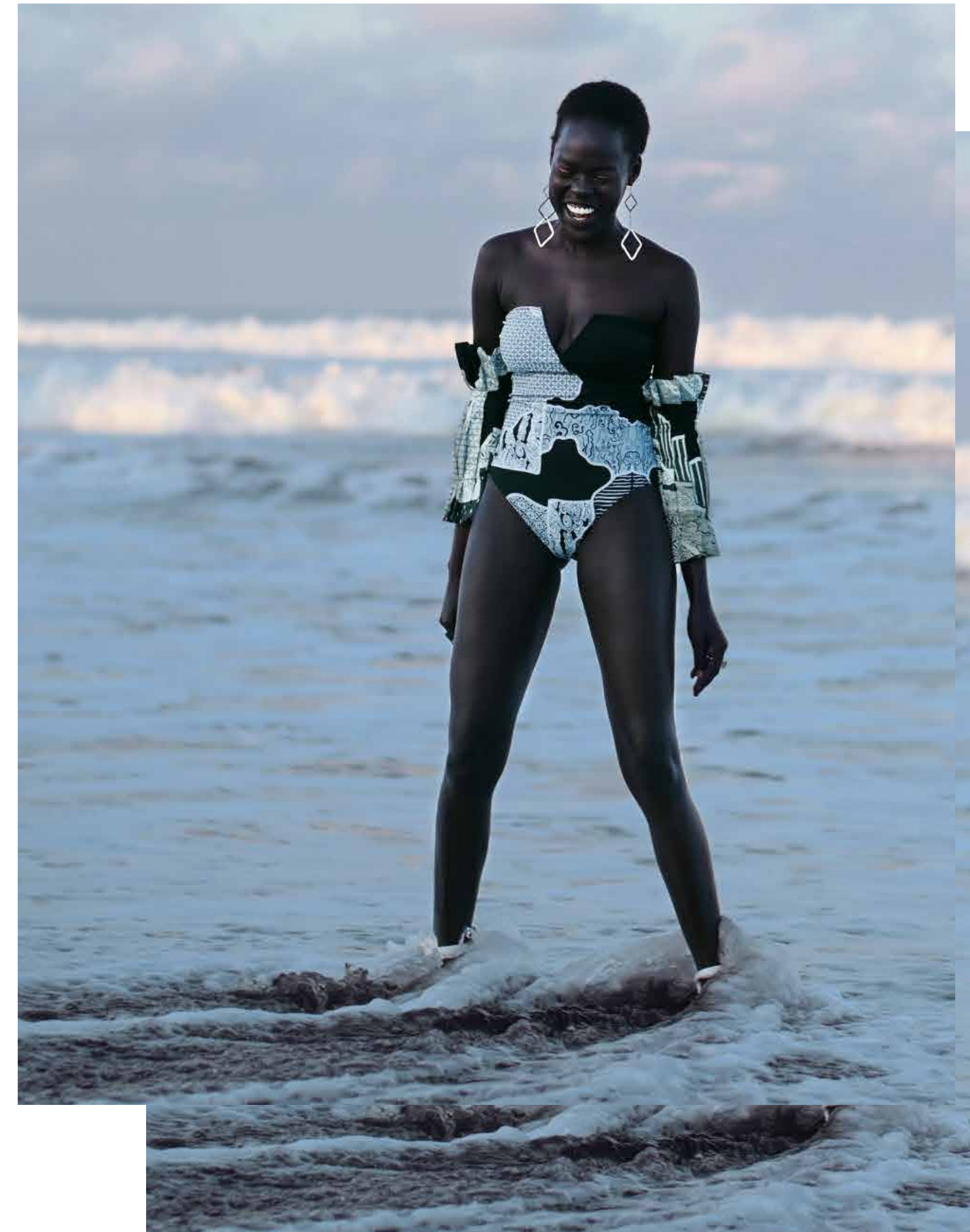
Pattern placement may look different on each product.

SIZE:

XS / S / M / L / XL / XXL

WHOLESALE PRICE - GBP 45

AYANA ONE PIECE





ALAIA TOP



ALAIA TOP

The Alaia Cropped Rashguard in Batik pattern brings glamour to the waves. It features fishnet detail and zipper back closure.
LONG SLEEVE // FULLY LINED



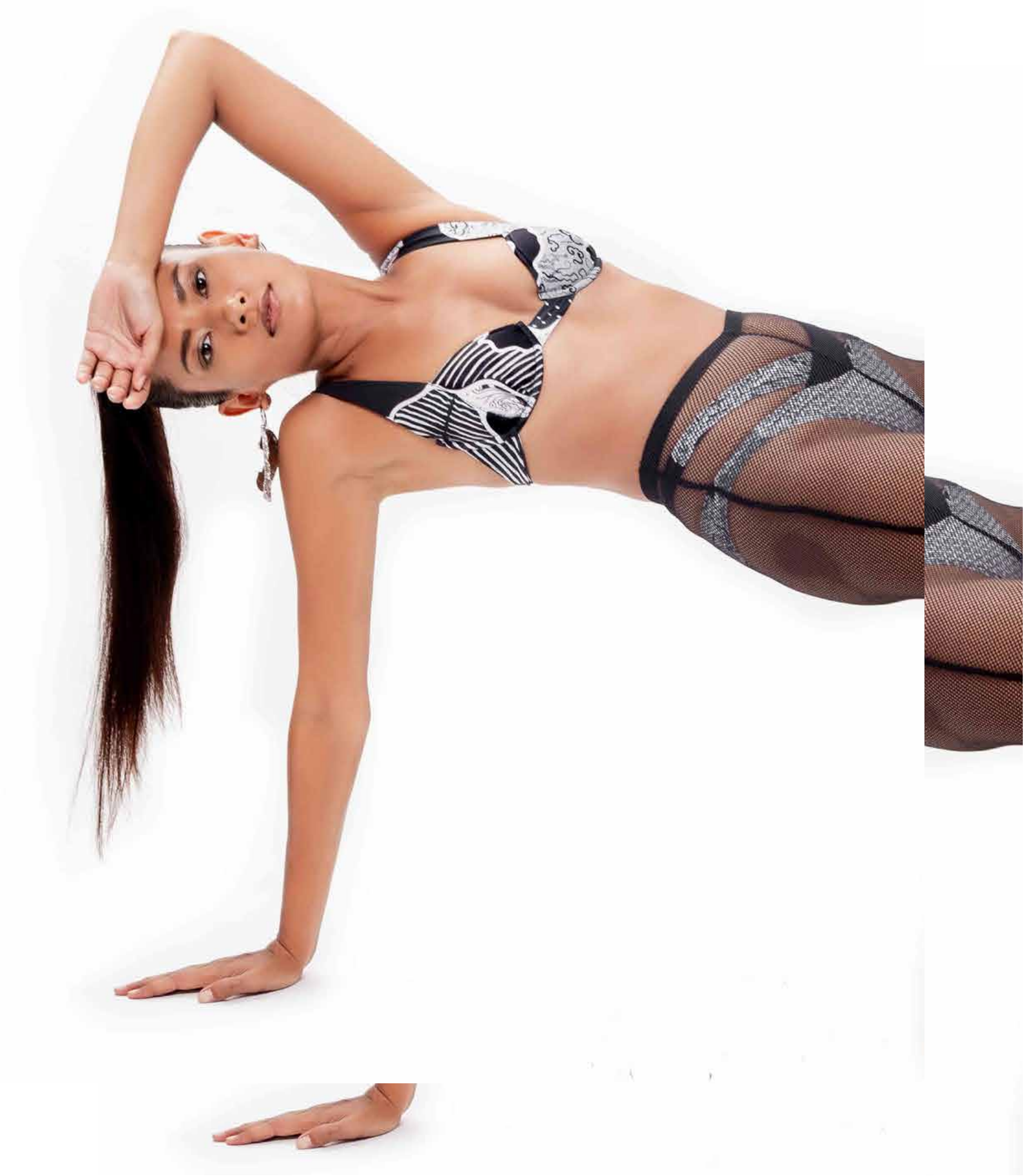
FABRIC:
Main - 78% Recycled Polyester, 22% Elastane
Lining - 95% Recycled Polyester, 5% Spandex
COLOR:

Monochrome Batik

Note for all products in Batik Collection:
Pattern placement may look different on each product.

SIZE:
XS / S / M / L / XL / XXL

WHOLESALE PRICE - GBP 40



FABRIC:
Main - 78% Recycled Polyester, 22% Elastane
Lining - 95% Recycled Polyester, 5% Spandex
SIZE:
XS / S / M / L / XL / XXL

COLOR:
Monochrome Batik
Note for all products in Batik Collection:
Pattern placement may look different on each product.



ARIA TOP

A supportive, underwired bra style top with adjustable straps.

CLASP AT BACK TO OPEN // MEDIUM COVERAGE // FULLY LINED

WHOLESALE PRICE - GBP 35



ARUN BOTTOM

A low cut leg bikini bottom with crossover details and Batik pattern. Customizable coverage.

MEDIUM COVERAGE // FULLY LINED // LOW CUT LEG

WHOLESALE PRICE - GBP 35

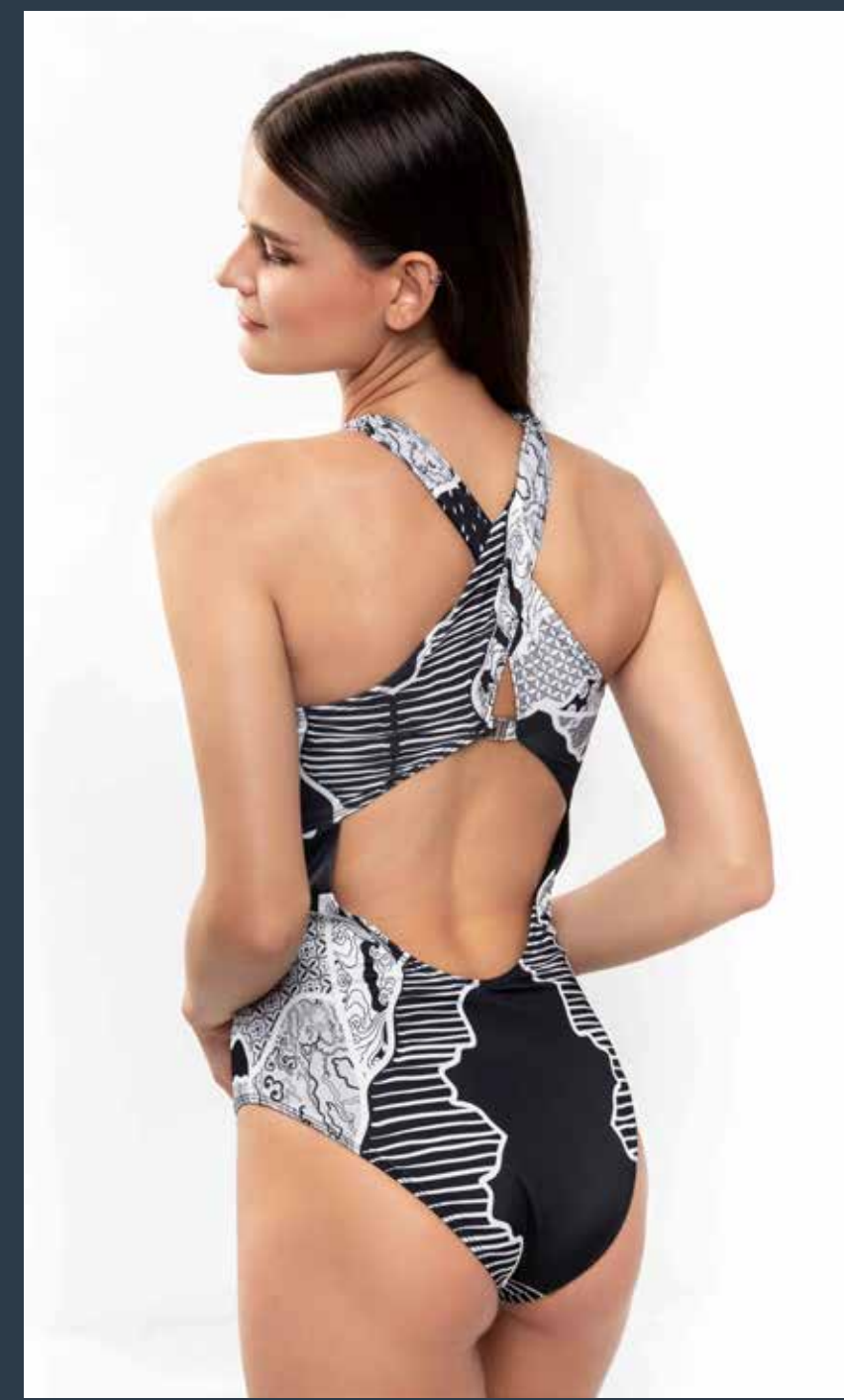
ABUA ONE PIECE



ABUA ONE PIECE

A cross-front wrap style swimsuit with cut out details, and finished with a wrap-around halter neckline. Customizable coverage.

MEDIUM COVERAGE // FULLY LINED // CLASP AT BACK TO OPEN



FABRIC:
Main - 78% Recycled Polyester, 22% Elastane
Lining - 95% Recycled Polyester, 5% Spandex

COLOR:
Monochrome Batik

Note for all products in Batik Collection:
Pattern placement may look different on each product.

SIZE:
XS / S / M / L / XL / XXL

WHOLESALE PRICE - GBP 45





AJOA KIMONO

This knee length kimono features large Japanese traditional sleeves, and is made of the softest vegan silk 100% bamboo in our Monochrome Batik print.

**LARGE JAPANESE SLEEVES // VEGAN
SILK // RELAXED FIT**

FABRIC:
100% Bamboo satin
COLOR:
Monochrome Batik

Note for all products in Batik Collection:
Pattern placement may look different on each product.
SIZE:
ONE SIZE

WHOLESALE PRICE - GBP 55

AJOA KIMONO



ABIONA TUNIC



FABRIC:
100% Bamboo satin
SIZE ABIONA TUNIC:
ONE SIZE
SIZE ARIMBI JUMPSUIT:
S/M & L/XL

COLOR:
Monochrome Batik
Note for zzall products in Batik Collection:
Pattern placement may look different on each product.

ABIONA TUNIC

Designed to be worn as a Beach Cover Up or as a tunic dress, The Abiona features a deep V neckline, batwing sleeves, and front lace up detail.

DEEP V NECKLINE // BATWING SLEEVES
WHOLESALE PRICE - GBP 35



ARIMBI JUMPSUIT

An oversized jumpsuit in Batik pattern with cross back detailing and a deep V neckline. Made of the softest vegan friendly bamboo satin.

CROSSED STRAPS BACK // OVERSIZE
WHOLESALE PRICE - GBP 40





BALANG KIMONO
FABRIC: 100% Bamboo satin
SIZE: ONE SIZE
COLORS:



BALANG KIMONO

This knee length kimono features hand embroidered details and our exclusive batik print .

RELAXED FIT // BACK SLIT // LARGE SLEEVES

WHOLESALE PRICE - GBP 55

BALANG KIMONO







AMANI SKIRT & ARA SKIRT

FABRIC:
100% Bamboo satin
SIZE AMANI SKIRT
XS / S / M / L / XL
SIZE ARA SKIRT: JUMPSUIT:
S / M & L / XL

COLOR:
Monochrome Batik
Note for all products in Batik Collection:
Pattern placement may look different on each product.



AMANI SKIRT

A high-waisted flowy mini skirt in Batik print.

**SKIRT-SHORT // FLOWY FABRIC //
UNIQUE SHAPE**

WHOLESALE PRICE - GBP 30



ARA SKIRT

A figure flattering crunched maxi skirt in Batik print.

**FITTED CUT // SIDE SLIT //CRUNCHE
DETAIL**

WHOLESALE PRICE - GBP 35



WHOLESALE PRICE - GBP 40



AMUTU PANTS

Bamboo satin palazzo pants in batik pattern featuring wide legs and high waist cut.
ELASTIC WAIST // WIDE LEGS // HIGH WAISTED



ARAXI TUNIQUE

A medium length bandeau style beach cover up in Batik pattern, with U shaped wire detail.
WIRE DETAIL // PLEATED FRONT

FABRIC: **100% Bamboo satin**
COLORS:

Monochrome Batik

Note for all products in Batik Collection:
Pattern placement may look different on each product.

SIZE ARAXI TUNIQUE:

S / M & L / XL

SIZE AMUTU PANTS:

XS / S / M / L / XL / XXL

ARAXI TUNIQUE & AMUTU PANTS



WHOLESALE PRICE - GBP 45

LES BRODÉS COLLECTION:

Paying homage to our **Indonesian culture**, we have worked with very talented local artisans to create the **Les Brodés** collection.

We've reintroduced the **Batik pattern** from our previous collections but in another approach that represents our amazing culture.

We've incorporated the stunning embroidery technique used by **locals in Bali** to make their traditional clothing.

Putting a modern spin on this, our swimwear pieces in this collection feature signature detailing using the **hand embroidery** technique.





BINAR TOP

This bikini top is asymmetrical and features a one shoulder with a hand-made embroidery detail and bandeau style

ONE SHOULDER STYLE // FULLY LINED

BIRA BOTTOM

A flattering high waisted bikini bottom that contours the hips, stomach and waistline. Customizable coverage

MEDIUM COVERAGE // FULLY LINED

BAMBU ONE PIECE

A clean cut one piece with embroidery statement details at the front, and low scoop back. Customizable coverage.

MINIMUM COVERAGE // FULLY LINED
// NON REMOVABLE STRAPS



WHOLESALE PRICE - GBP 50



TOP // WHOLESALE PRICE - GBP 40
BOTTOM // WHOLESALE PRICE - GBP 25



FABRIC:
Main - 78% Recycled Polyester, 22% Elastane
Lining - 95% Recycled Polyester, 5% Spandex
SIZE:
XS / S / M / L / XL / XXL
COLORS:





BAROK ONE PIECE

A flattering bandeau neckline with high cut leg, removable shoulder straps, and hand-made embroidery details at the front. This swimsuit offers an effortless resort look. Customizable coverage.

REMOVABLE STRAPS // FULLY LINED // MEDIUM COVERAGE



FABRIC:

Main - 78% Recycled Polyester, 22% Elastane

Lining - 95% Recycled Polyester, 5% Spandex

SIZE:

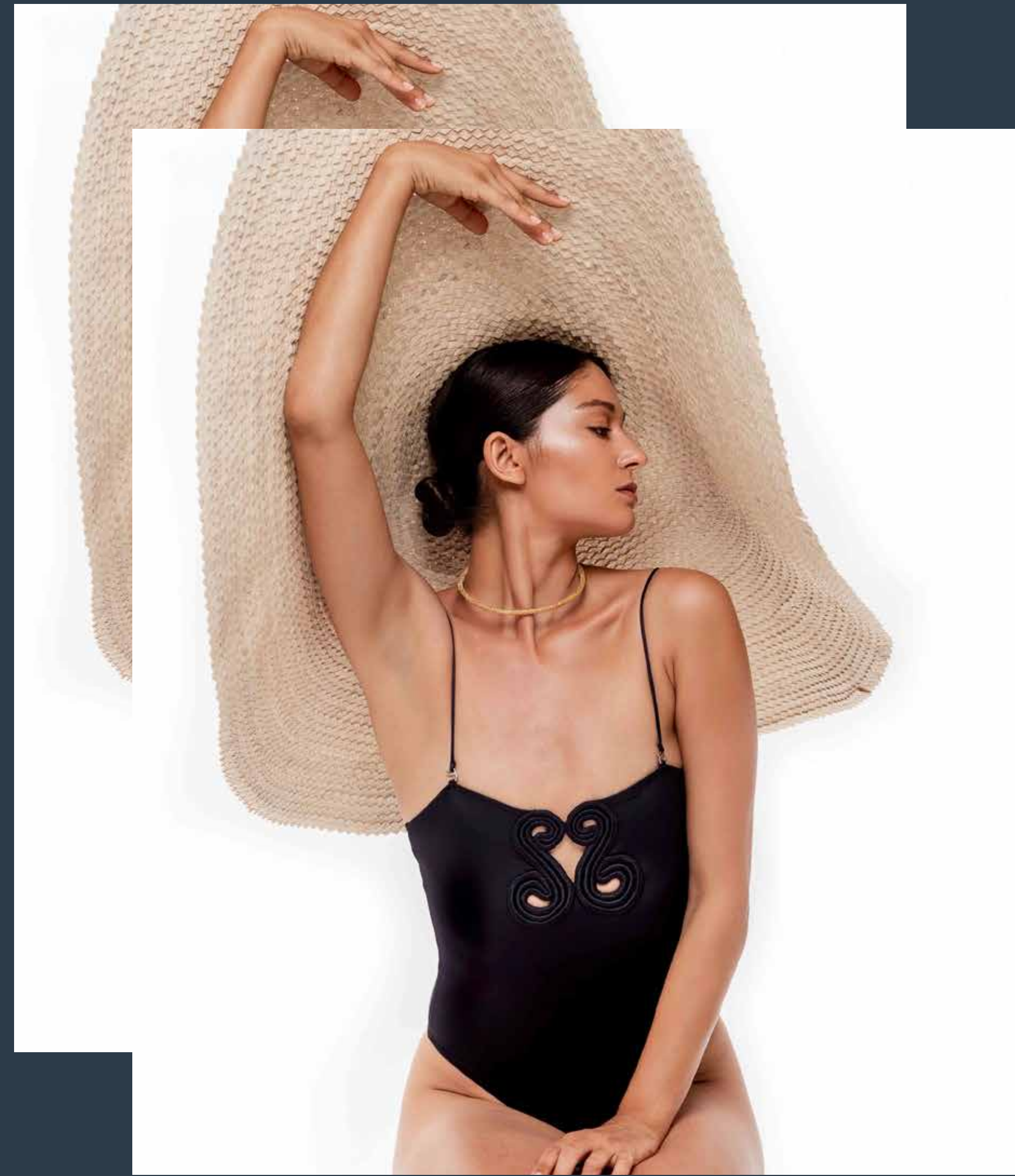
XS / S / M / L / XL / XXL

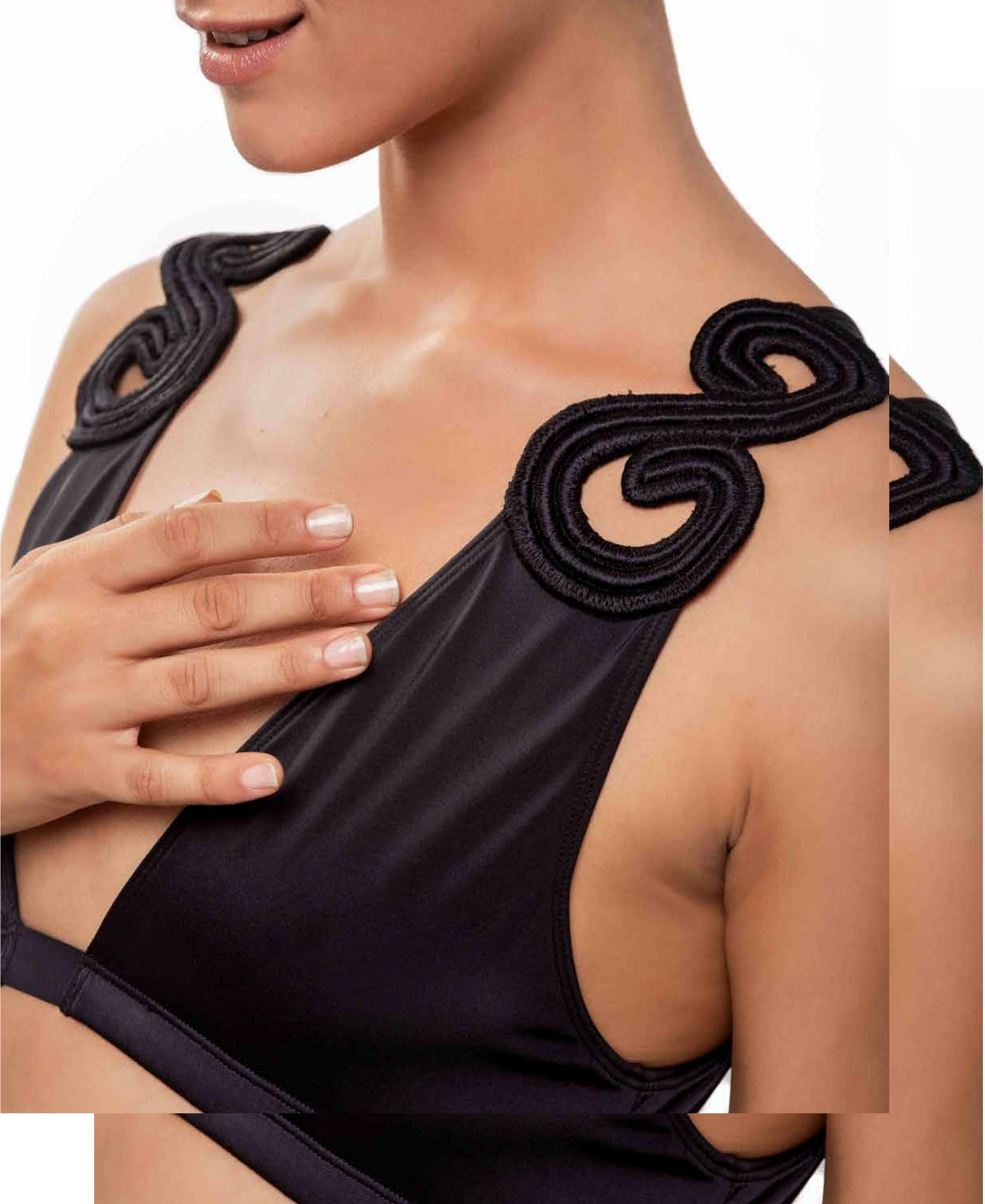
COLORS:



WHOLESALE PRICE - GBP 45

BAROK ONE PIECE





BAJO TOP

A deep V triangle top with wide straps, beautifully detailed with hand-made embroidery
CLASP BACK TO OPEN // FULLY LINED

BUMI BOTTOM

A brazilian bikini bottom that elongates the legs and flatters your shape by comfortably sitting above the hips, with less coverage to accentuate curves. Customizable coverage
LESS COVERAGE // FULLY LINED

BATU ONE PIECE

A plunging one-piece swimsuit with low back, high cut leg, and hand-made embroidery details. Customizable coverage.
**MINIMUM COVERAGE // FULLY LINED
// PLUNGE NECKLINE**



TOP // WHOLESALE PRICE - GBP 40
BOTTOM // WHOLESALE PRICE - GBP 25



WHOLESALE PRICE - GBP 50



FABRIC:
Main - 78% Recycled Polyester, 22% Elastane
Lining - 95% Recycled Polyester, 5% Spandex
SIZE:
XS / S / M / L / XL / XXL
COLORS:





BENOA BEACH COVER



BENOA BEACH COVER:
FABRIC: **100% cotton**
SIZE: **S / M & L / XL**
COLORS:  

BORA DRESS:
FABRIC: **100% cotton**
SIZE: **ONE SIZE**
COLORS: **white**

BENOA BEACH COVER

A delicate, 100% hand embroidered beach cover up featuring short sleeves and fringe details.

HAND EMBROIDERED // FRINGES

WHOLESALE PRICE - GBP 55

BORA DRESS

Flowy tiered maxi dress featuring hand-embroidered details, cut-out details, and adjustable straps.

HAND EMBROIDERED // ADJUSTABLE STRAPS

WHOLESALE PRICE - GBP 55





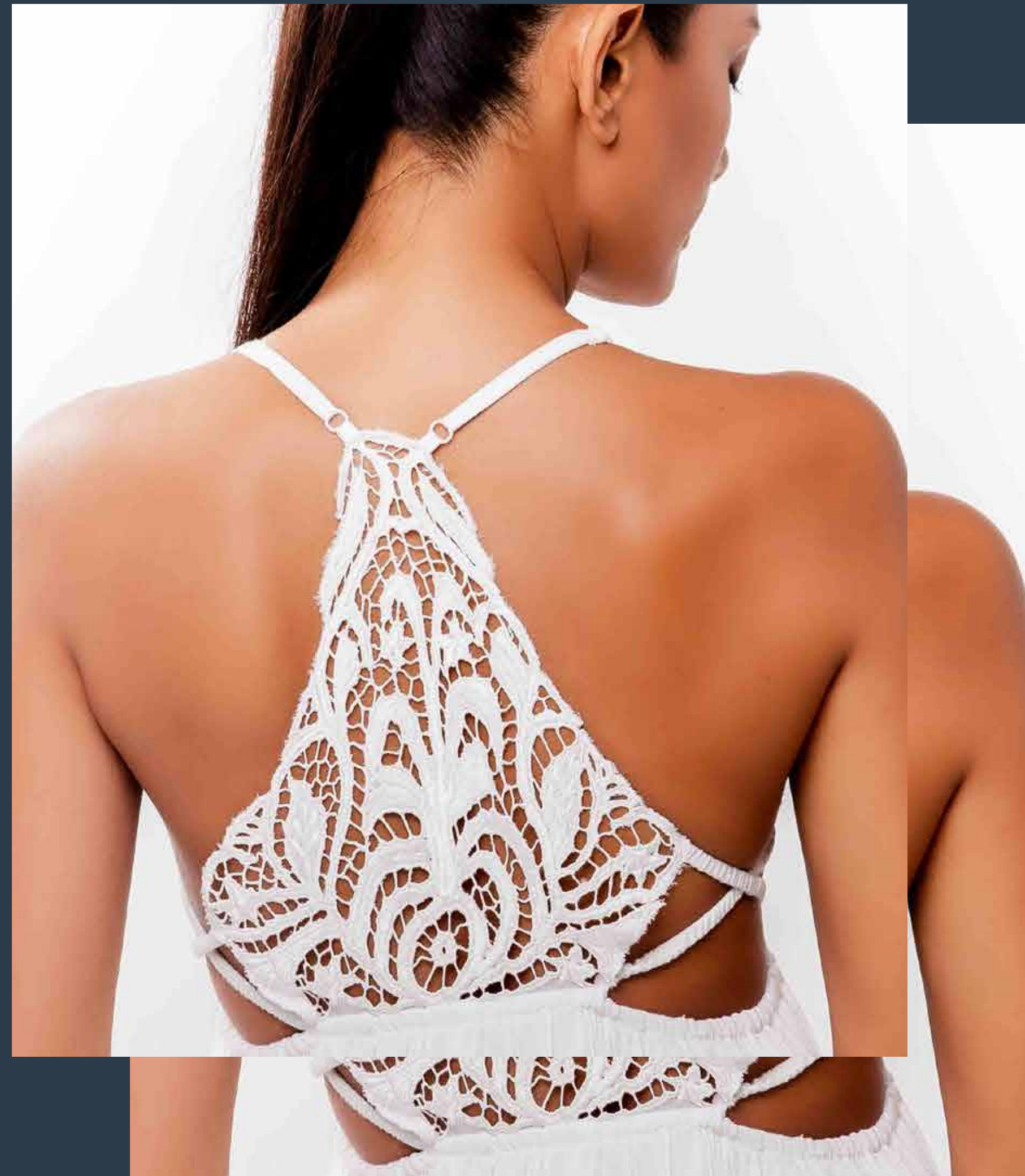
BIYAN DRESS

Flowy mini dress featuring hand-embroidered details.

HAND EMBROIDERED // CUT-OUT DETAILS

FABRIC: **100% cotton**
SIZE: **XS / S / M / L / XL**
COLORS: **white**
WHOLESALE PRICE - GBP 45

BIYAN DRESS





BEJANA SKIRT:
FABRIC: 100% bamboo satin
SIZE: **ONE SIZE**
COLORS:  

BULAN SKIRT:
FABRIC: 100% bamboo satin
SIZE: **ONE SIZE**
COLORS: **Black**



BEJANA SKIRT

Ruffled flowy skirt featuring wrap around tie details and side slit.

SLIDE SLIT // RUFFLES // WRAP TIE

WHOLESALE PRICE - GBP 30

BULAN SKIRT

Draped maxi skirt with wrap around tie detail.

DRAPED // WRAP TIE

WHOLESALE PRICE - GBP 30

BANYU DRESS



BANYU DRESS

A loose tiered maxi dress featuring ruffled neckline and low-cut back. The Banyu Dress is made from certified organic linen that is produced without chemical fertilizer, pesticide and genetically modified seeds.

ASYMMETRIC CUT // HALTER // DEEP V NECKLINE

FABRIC:
100% organic linen
COLOR:
Cream
SIZE:
XS / S / M / L / XL / XXL
WHOLESALE PRICE - GBP 55

