



Sophia & Alexia

LONDON

Introduction

Sophia-Alexia is a London based luxury resort brand launched in 2015. We love to give the feeling of a luxury lifestyle through our wardrobe of beautiful products that take you from morning till evening, from beach to bar and beyond! Our unique collection help to make women of all ages stand out and feel gorgeous, confident and beautiful. Our designs are inspired by travels around the world. Our colours and prints are reflections of the sea, sunsets, rainforests and are inspired by exotic animals, birds & nature.

Respecting our planet and our craft, every piece is designed to be sustainable, and lovingly cherished and enjoyed for years to come.

Our Designer Prints

All the prints within our collection are designed in-house by Sophia. They are exclusive to the Sophia Alexia brand, making them special and unique. All styles within our collection are created to be timeless pieces, worn and enjoyed by all ages.



BEACH SHIRT



Orchid Paradise Beach Shirt

Diamond Blue Beach Shirt

Made from super soft lightweight rayon, this summer staple beach shirt has a flattering shirt style front with large, beautiful mother of pearl buttons and the option to turn up and button the three-quarter sleeves.

£98

Petite, Small, Medium, Large, Extra Large
9 print options



Lilac Pebbles Capri Kimono



Aqua Pebbles Capri Kimono



Opal Opulence Capri Kimono

CAPRI KIMONO

The Capri Kimono is made from a beautiful silk-like viscose blend. This floaty maxi dress has an elasticated waist and sexy side slits.

£160

S/M, M/L & L/XL
6 print options

CLUTCH BAGS



Our embellished clutch bags are the perfect accessory to style with our collection. Available in 12 of our vibrant prints. The bags are trimmed with shell and gold beading and feature two gold pineapple adorned zips and a matching tassel.

£55

12 print options

Pink Pebbles Clutch Bag

NEW IN

*Turquoise Wave
Mini Sun Dress*

MINI/MAXI SUNDRESS

Crafted from super soft, lightweight rayon fabric, our sun dresses are sure to keep you cool on those hot summer days. Both our maxi and mini feature adjustable self-tie spaghetti straps, adorned with our signature tassels.

£85

S/M, M/L, L/XL
5 print options

£115

Maxi length
S/M, M/L, L/XL
5 print options



Lilac Pebbles Maxi Sun Dress

MALIBU MINI

The Malibu Mini is made from our super soft lightweight rayon.

This off-the-shoulder design has an elasticated waist, which can be adjusted to give a longer or shorter look. There is a pretty ruffle hem. It has billowed sleeves, elasticated at the wrist, which can be pushed up to the elbows. Also features tassel detail.

£125

S/M, M/L

4 print options

NEW IN



*Pink Sands
Malibu Mini*



Turquoise Wave Malibu Mini



Lilac Pebbles Malibu Mini



Jade Paradise Malibu Mini

CLASSIC SILK KAFTAN



Liquid Rainbow Silk Kaftan

This luxurious silk kaftan sports a relaxed silhouette with a handkerchief hem, V neckline and wide cropped sleeves.

£180

Small, Medium, Large
12 prints and 2 lengths
(2.5 inches difference).



Pink Fire Silk Kaftan

Pink Fire Maxi Silk Ibiza Dress



MAXI IBIZA

The Ibiza dress is crafted from luxurious silk which gives exceptional drape and fluid movement. It comes in one size with an adjustable and flattering drawstring tie located under the bust, tying at the back, as well as a halter necktie. The ties feature our signature gold pineapple and tassels.

The perfect dress for a wedding guest or summer holiday!

£215

One size fits all 6-16
13 print options

MINI IBIZA

£180

One size fits all 6-16
6 print options



*Blue Diamond
Mini Silk
Ibiza Dress*



MINI RIVIERA DRESS



Made from super lightweight rayon fabric, this dress features cascading flute sleeves, a cinching wrap-style silhouette and a two-tiered ruffle hemline that sits above the knee, floating longer at the back.

£135

XS/S, S/M, M/L, L/XL
2 print options



RUFFLE WRAP MAXI DRESS

The Maxi Ruffle Wrap dress is crafted from soft, lightweight rayon fabric that drapes beautifully on the body. This flattering wrap style has a discreet internal tie which accentuates the waist area by nipping it in and securing the dress in place. It also features a gathered cascading waist at the back creating an ultra-flattering rear view.

£159

Available in two lengths long and short both maxi but 5 inches in difference, we suggest 5'6 and below take the shorter length and 5'7 and above the longer length.
9 print options

Emerald Leopard Ruffle wrap dress (model wears longer version)

MEN'S SHIRTS



Our new line of men's linen shirts are perfect for summer days and warm barmy evenings. Mini linen shirts: Twin your men's linen shirt with your little one! The perfect gift for those fashionable families.

£95

S - 3XL

More print options available

A full-page photograph of a man with long, wavy brown hair and a light beard, wearing dark aviator sunglasses. He is shirtless and standing on the deck of a boat, with his right arm raised and hand near the boat's railing. He is wearing teal and black patterned swim shorts with white drawstrings. The background shows a deep blue sea and a hazy, mountainous coastline under a bright sky.

MEN'S SHORTS

The shorts are constructed in a quick dry polyester fabric and have a super soft hand feel.
Features two side pockets, a card-holder pocket and a rear zip pocket.

£110

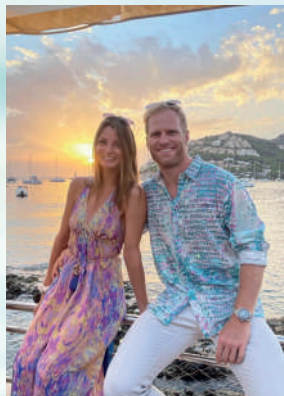
S - 3XL

6 print options

Spotted in Sophia



Follow us on Instagram @sophia.alexia and tag us to be featured.
#SPOTTEDINSOPHIA



Sign up to our mailing list and receive 10% off your first order, be part of the **Sophia Club** where you get first access to sales, competitions, new designs and be part of our colourful community.

Size Guide

Sophia Alexia Size	XS	S	M	L	XL
UK size	6 -8	8-10	10-12	12-14	14-16
EU size	34-36	36-38	38-40	40-42	42-44
US size	2-4	4-6	6-8	8-10	10-12
Full Bust (cm)	80-85	85-90	90-95	95-100	100-105
Full Waist (cm)	63-68	68-73	73-78	78-83	83-88
Full Hip (cm)	88-93	93-98	98-103	103-108	108-113

Above is our general size guide. Sizes are not specific to any garment measurement. This may vary with more loose-fitting styles. If you are unsure about what size to purchase, please do not hesitate to contact our friendly customer service team at orders@sophia-alexia.com.

Additional Information

How To Buy

Online: www.sophia-alexia.com

Make sure you visit us online to see our full range of styles, prints and sizes. We also ship worldwide.

Next Day Delivery

UK online orders: Receive your online order the next business day if your order is placed before 1pm.

Customer service

Please do not hesitate to contact our friendly customer service team who are very happy to help with any questions you might have: orders@sophia-alexia.com

Wholesale Enquires: wholesale@sophia-alexia.com


Our full terms and conditions are on our website. www.sophia-alexia.com



Sophia Alexia

-LONDON-

GET IN TOUCH: orders@sophia-alexia.com

 [@sophia.alexia](https://www.instagram.com/sophia.alexia)

 [Sophiaalexia](https://www.facebook.com/Sophiaalexia)