

SABINE

STUDIOS

ECO-FRIENDLY, AUSTRALIAN MADE LUXURY

info@sabinestudios.com.au



www.sabinestudios.com.au



SABINE

ECO-FRIENDLY, AUSTRALIAN MADE LUXURY

THOUGHTFUL. CONSIDERED. SEASONLESS

The juxtapositions that emulate true style-
Masculine yet feminine, chic yet laid back,
luxurious yet wearable.

A brand with a sophisticated ease grounded
in a genuine sustainability ethos and
ethical practices.

SUSTAINABLE. ETHICAL. LOCAL. ESSENTIAL



ABOUT SABINE

DESIGNED AND MADE IN MELBOURNE

With over twenty years experience in Trend Forecasting & Design; Sabine's Creative Director, Davina Cassino has designed each piece with the female body in mind. Knowing how to accentuate the good bits to make you look and feel your absolute best.

Local production ensures that there is no shipping back and forth from overseas suppliers. No polluting our earth and seas with air or sea freight. Whilst also helping to bring the textile industry back to Australia and create local jobs within our economy.

LIMITED QUANTITIES

Sabine pieces are high quality treasures for the woman who doesn't want to look like everyone else. Pieces that you can wear your own way to make you feel special. Smaller quantities means that there is no wastage or products left over and NOTHING ending up in landfill.

SLOW FASHION/ HANDMADE

Locally and ethically made by a team of Melbourne based expert machinists & pattern-makers who chose their own working hours and are paid high hourly rates. Keeping it real & keeping it local.

MULTI PURPOSE DRESSING

Machine washable, easy care- easy wear. Every garment has been designed to fit multiple functions and occasions. And that fact most pieces are machine washable, ensures you are getting value for money and the most out of your purchase.

CIRCULAR FASHION
HANDPICKED EXISTING FABRICATIONS

Every fabric used has been hand picked from materials that currently exist. We source the most beautiful dead-stock fabrics and create something new. Thus eliminating what can/will end up in landfill. We see ourselves as part of the solution not the problem.

FASHION FORWARD YET TIMELESS

Inspired by Parisienne street style with an Italian attitude; Sabine is chic in style, yet effortless and timeless in its silhouettes and cuts. Fashion that will make you feel stylish at all times, but designed to be worn forever.

"Our objective is to bring beauty, authenticity and individuality back to the fashion industry. To steer away from the current world of fast fashion & mass market drenching. To offer pieces that will last a lifetime whilst sustainably sourced and ethically & locally handmade"

THE PAIRING OF OPPOSITES

Our new AW collection reflects The pairing of opposites.
Masculine yet feminine, chic yet laid back, luxurious yet wearable.

Layer it, mix it up, pair it back, dress it up, dress it down. Make it yours.

This season we have added bold graphics to be teamed with the sophistication of
our tailored pieces.

The additions of our lounge component (underwear as outerwear). Crop tops with
suit pants. Sheer tops under shirts. Oversized graphic tees as dresses.
Do as you will.

With each piece designed to sit back with our current collections; the entire Sabine
aesthetic is relaxed, sophisticated, easy and chic.

Our signature monochromatic palette is now teamed with sand and highlighted
with hints of fiery red.

We continue with our set dressing offering new silhouettes in fresh stripes that are
the seamless update to your current staples.

Enjoy

Dx

JASPER SHIRT/ 100% COTTON POPLIN-
GREY

“It’s all well and good to wear something three sizes too big for You when you have youth on your side, but as you get older you need a little more curation and tailoring.

I wanted the appearance of the man-style shirt, however I needed it to be sleeker on my arms and designed to not make me look frumpy.

I couldn’t find anything like this... thus Sabine was born”

JASPER SHIRT & PANT/ 100% COTTON POPLIN-SAND



JASPER SHIRT & PANT/ 100% COTTON POPLIN-SAND



SASKIA 3/4 PANT & SHIRT/ 100% LINEN- INDIGO



MANON SHIRT- ALL SORTS STRIPE
100% SILK



MANON SHIRT- MERLOT STRIPE
100% CUPRO



MANON SHIRT- MERLOT STRIPE
100% CUPRO



MANON SHIRT- MERLOT STRIPE
100% CUPRO



ESTELLE SHIRT/ COTTON DENIM- INDIGO
MANON PANT/ 100% CUPRO- MERLOT STRIPE



ESTELLE SHIRT/ COTTON DENIM- LIGHT BLUE
JASPER PANT/ 100% COTTON- GREY
LE T-SHIRT/ 100% COTTON- WHITE



ULTIMATE SHIRT/ 100% COTTON- HOUNDSTOOTH
DAPHNE LONG SLEEVE/ LYOCCELL WOOL BLEND- CREAM
VITTORIA CROP TANK/ COTTON RIB- GREY
SARINA PANT/ 100% COTTON- HOUNDSTOOTH

MILA HOODIE/ COTTON FRENCH TERRY- BLUE

*“Sabine tee’s, tops & sweats are made using the highest
quality materials.*

*Fabrics that are good for you and good
for the Earth.*

No pilling, easy-care, easy-wear.

Dress them up or down, perfect for any occasion”

Sabine

MANON PANT/ 100% SILK- ALL SORTS STRIPE
LYON TEE/ 100% COTTON- WHITE



SISINA ZIP PANT/ NEOPRENE- RED
SIXTY SIX TEE/ 100% COTTON- RED



DYLAN TANK/ 100% COTTON- WHITE



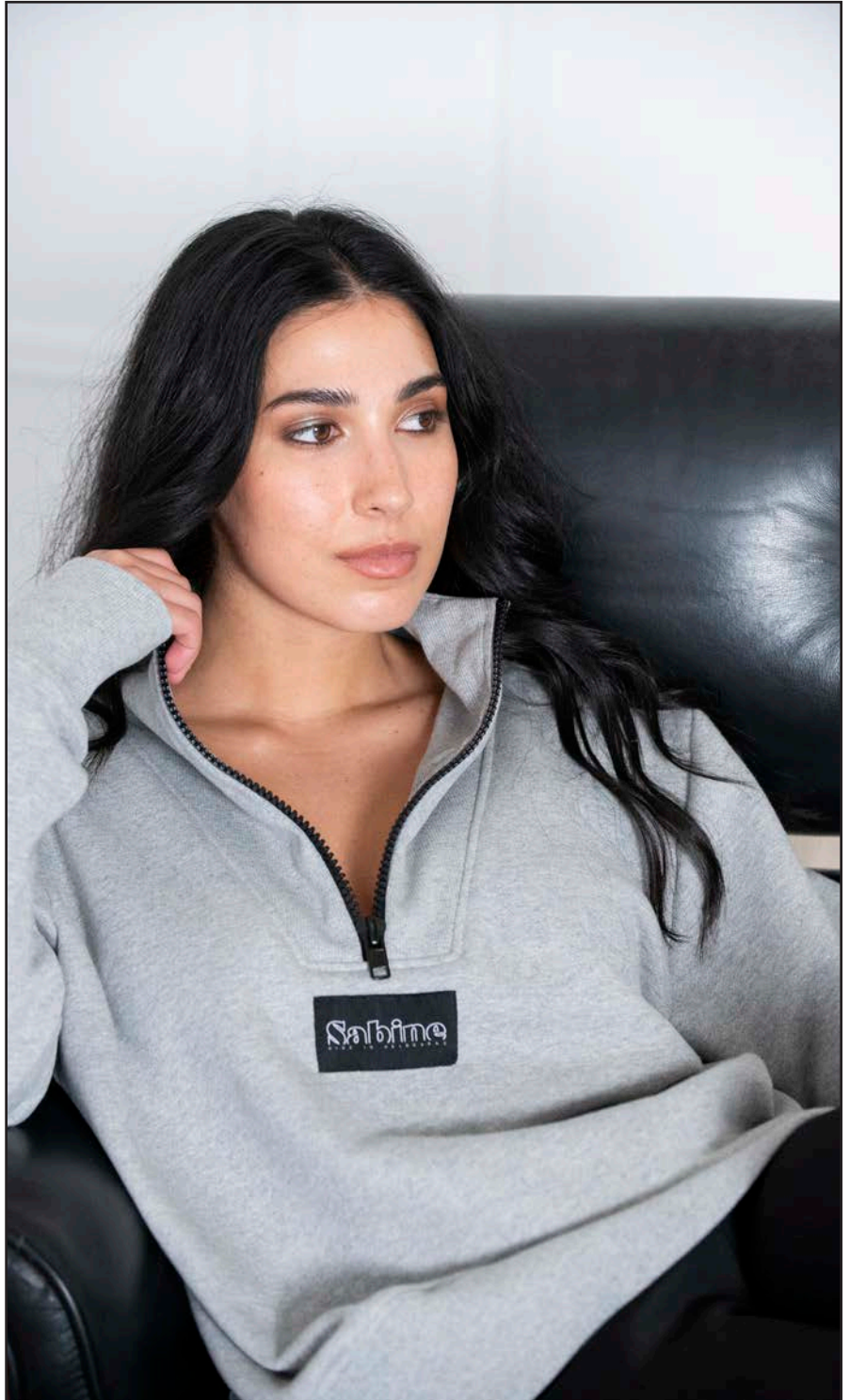
LE T-SHIRT/ 100% COTTON- WHITE
MANON PANT/ 100% SILK- ALL SORTS STRIPE



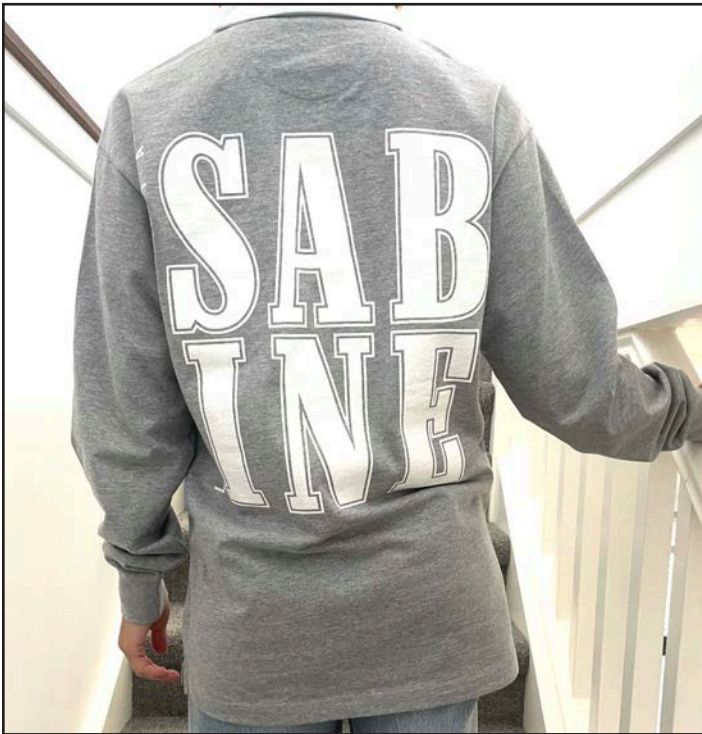
SABINE SHORT/ 100% COTTON- BLACK STRIPE
MIKEY POLO TOP/ 100% COTTON- BLACK



SAINT GERMAIN ZIP UP/ FRENCH TERRY- BLACK
SISINA ZIP PANT/ NEOPRENE- BLACK



SAINT GERMAIN ZIP UP/ FRENCH TERRY- GREY
SISINA ZIP PANT/ NEOPRENE- BLACK



MIKEY POLO TOP/ 100% COTTON- GREY



COLETTE HOODIE/ 100% COTTON- GREY



SIXTY SIX TEE/ 100% COTTON- BLACK

SUPERCLUB TEE/ 100% COTTON- BLACK ON BLACK



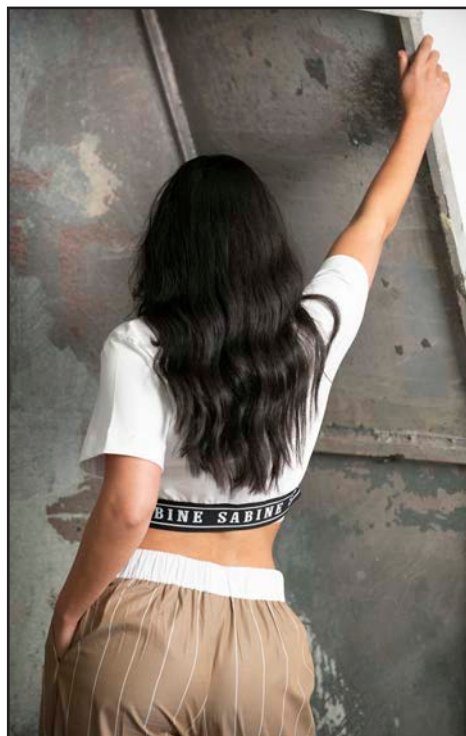
DAMIANO SWEATER/ BRUSHED FLEECE- BLACK



SYLVIE TANK/ 100% VISCOSE JACQUARD- BLACK LEOPARD



FABIAN 01 SWEATER- COTTON FRENCH TERRY- GREY
SARINA PANT/ 100% COTTON- BLACK STRIPE



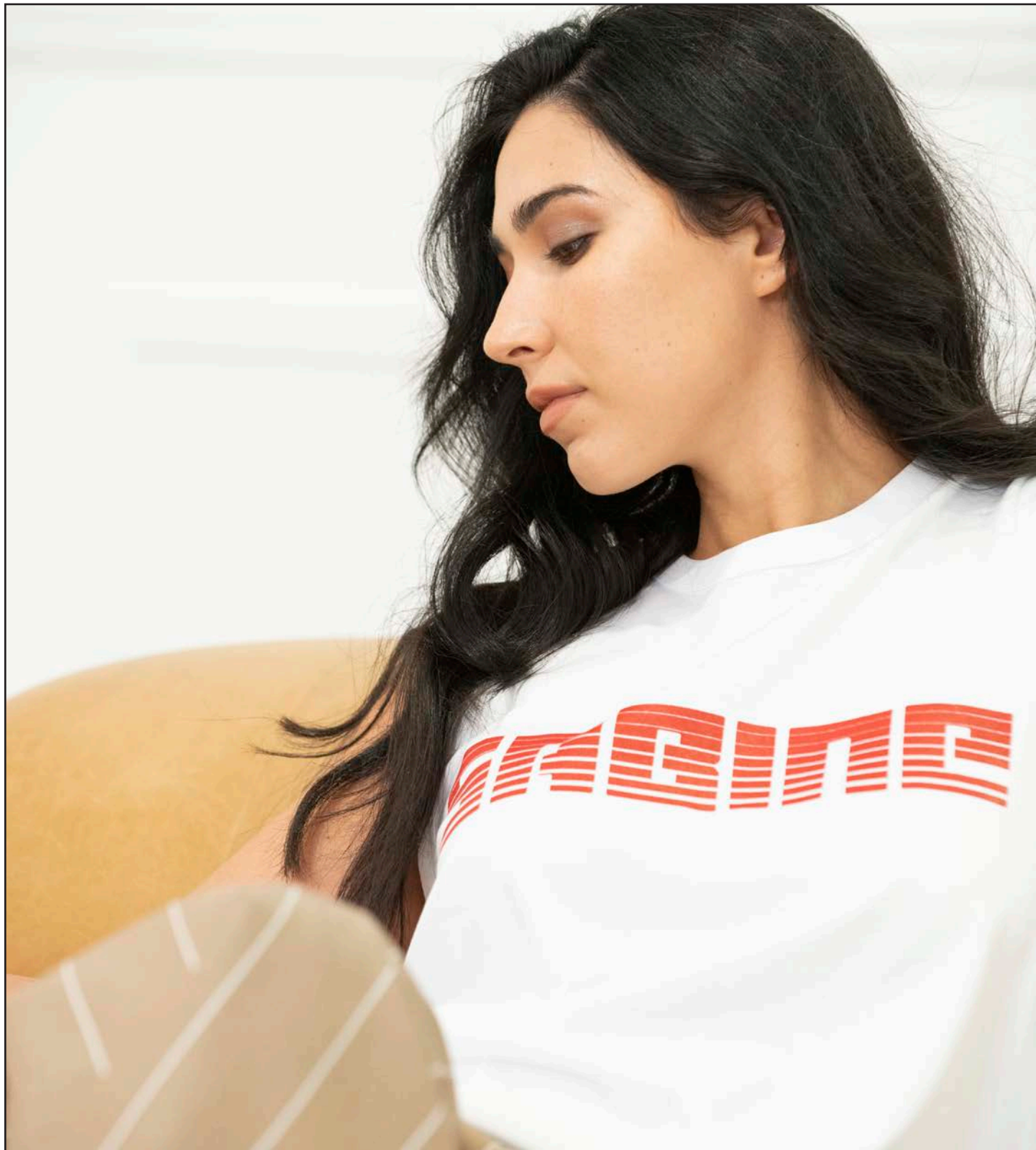
BRIGITTE CROP TEE/ 100% COTTON- WHITE
JASPER PANT/ 100% COTTON- SAND



BRIGITTE CROP TEE/ 100% COTTON- WHITE
JASPER PANT/ 100% COTTON- SAND



BRIGITTE CROP TEE/ 100% COTTON- GREY
SARINA PANT/ 100% COTTON- TAN STRIPE



DYLAN TANK/ 100% COTTON- WHITE
JASPER PANT/ 100% COTTON- SAND



SABINE SHORT/ 100% COTTON- WHITE
DAPHNE LONG SLEEVE TOP/ LYOCCELL WOOL/ CREAM
VITTORIA CROP TANK/ COTTON RIB- GREY




D-CASS CROP TOP & BRIEF SET/ COTTON RIB- GREY
MANON PANT/ 100% CUPRO- MERLOT STRIPE

D-CASS CROP TOP & BRIEF SET/ COTTON RIB- GREY
DAPHNE LONG SLEEVE/ LYOCELL WOOL BLEND- CREAM
SARINA PANT/ 100% COTTON- WHITE



SIENE SKIRT/ LYOCELL WOOL- GREY
DAPHNE LONG SLEEVE TOP/ LYOCELL WOOL/ CREAM
VITTORIA CROP TANK/ COTTON RIB- GREY

AZZURRA HIGH NECK/ LYOCELL WOOL BLEND- GREY
JASPER PANT/ 100% COTTON- SAND



“All our bottoms have been created and tailored to elongate the leg.
To accentuate the good bits and hide the not so good bits.
We cater for the woman who wants to rock her true style, so we ensure
to offer pieces that allow her to do it comfortably”

BRIGITTE CROP TEE/ 100% COTTON- WHITE
JASPER PANT/ 100% COTTON- SAND



D-CASS CROP TOP/ COTTON RIB- GREY
JASPER PANT/ 100% COTTON- GREY



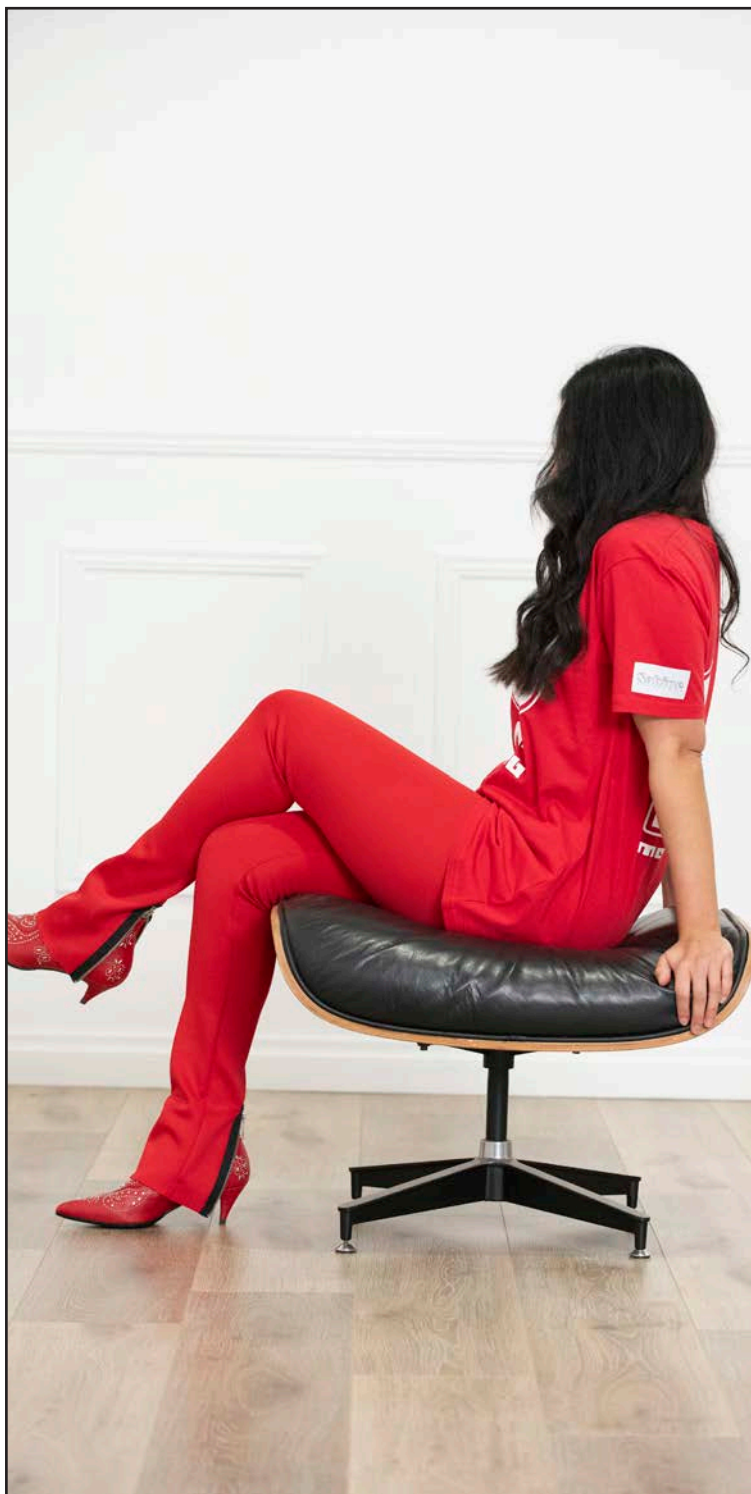
DYLAN TANK/ 100% COTTON- WHITE
JASPER PANT/ 100% COTTON- SAND



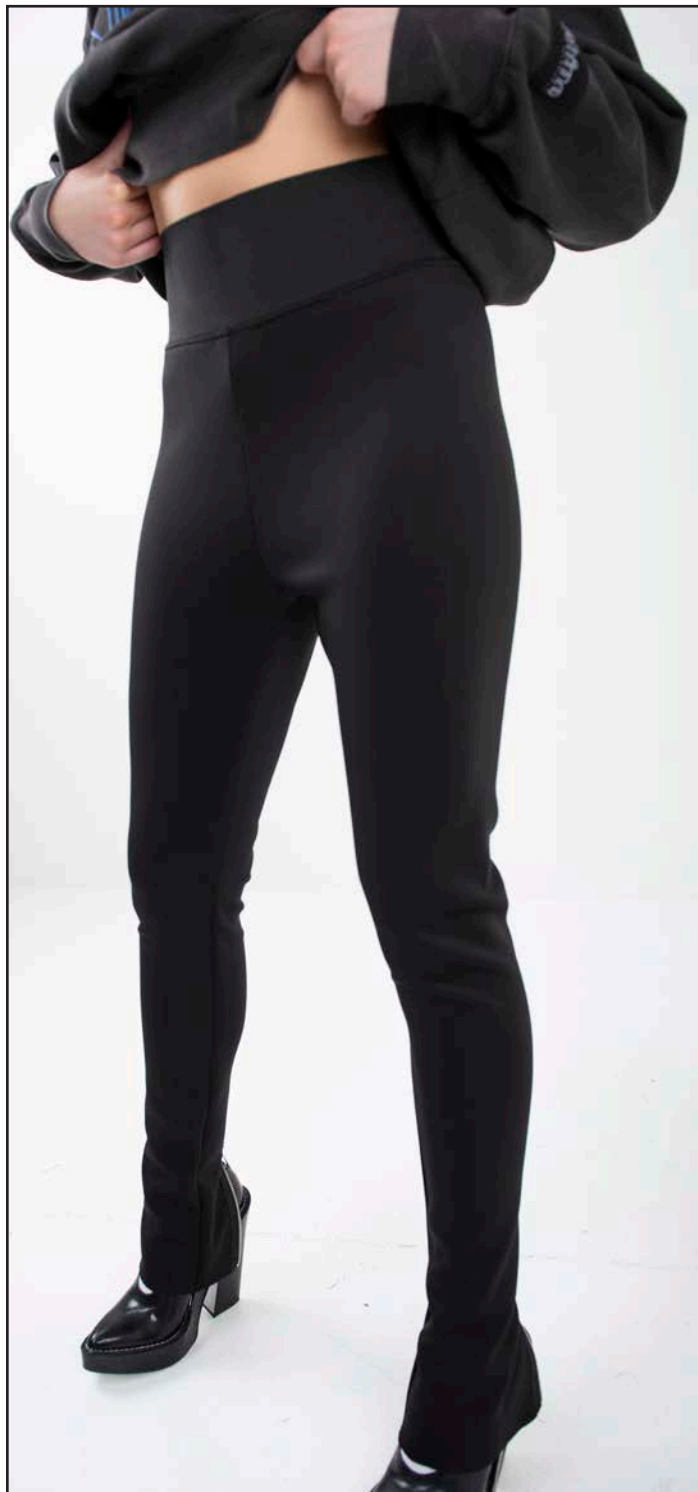
AZZURRA HIGH NECK/ LYOCCELL WOOL BLEND- GREY
VITTORIA CROP TANK/ COTTON RIB- GREY
JASPER PANT/ 100% COTTON- GREY



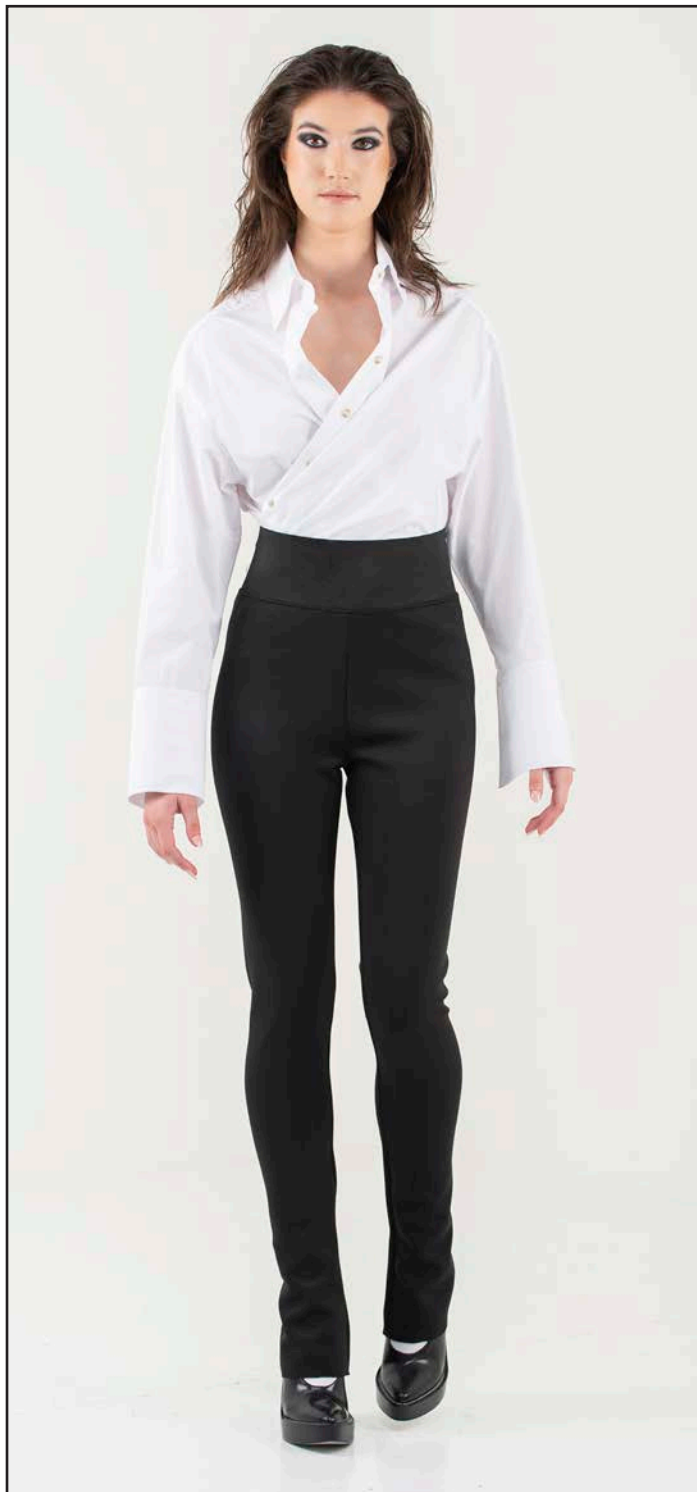
MIKEY POLO TOP/ 100% COTTON- BLACK
SISINA ZIP PANT/ NEOPRENE- BLACK



SIXTY SIX TEE/ 100% COTTON- RED
SISINA ZIP PANT/ NEOPRENE- RED



SISINA ZIP PANT/ NEOPRENE- BLACK



SISINA ZIP PANT/ NEOPRENE- BLACK
ULTIMATE SHIRT/ 100% COTTON- WHITE



SISINA ZIP PANT/ NEOPRENE- BLACK



SIENE SKIRT/ LYOCELL WOOL- GREY
DAPHNE LONG SLEEVE TOP/ LYOCELL WOOL/ CREAM
VITTORIA CROP TANK/ COTTON RIB- GREY

SIENE SKIRT/ LYOCELL WOOL- GREY
BRIGITTE CROP TEE/ 100% COTTON- GREY



AZZURRA HIGH NECK/ LYOCELL WOOL BLEND- GREY
JASPER PANT/ 100% COTTON- SAND



BRIGITTE CROP TEE/ 100% COTTON- GREY
SARINA PANT/ 100% COTTON- TAN STRIPE



MANON PANT & SHIRT/ 100% CUPRO- MERLOT STRIPE



SASKIA SHIRT AND 3/4 PANT/ 100% LINEN- INDIGO



WE WILL HAVE ADDITIONAL COLOURWAYS IN SOME STYLES AVAILABLE FOR REVIEW AT THE SHOW, ALONG WITH OUR CURRENT RANGE.

FIND US AT STAND:
GRAND GROUND F34

FOR APPOINTMENTS, PLEASE CONTACT BRIDGET AT
SALES@SABINESTUDIOS.COM.AU

FOR GENERAL INQUIRIES, PLEASE CONTACT DAVINA AT
INFO@SABINESTUDIOS.COM.AU



Sabina