

A man and a woman are posing against a light grey wall. The woman, on the left, has long blonde hair and is wearing a white t-shirt, blue jeans, and a brown leather jacket. She is smiling and looking towards the man. The man, on the right, has dark curly hair and a beard, and is wearing a grey t-shirt, dark jeans, and a black leather jacket. He is looking directly at the camera. The woman's right arm is resting on the man's shoulder.

*Mauritius*

LEATHERWEAR

NOOS



#### NOOS - NEVER OUT OF STOCK

Fashionable. Timeless. Sustainable.

Handcrafted clothing made from durable leather with a timeless design.

The NOOS range includes our classic core products in simple, basic colors, offered in a wide range of sizes.

We ship directly from our company headquarters: anything, anywhere, anytime.

#### VEGETABLE TANNING

Since Spring/Summer 2021 almost all of our leathers are vegetable tanned without relying on chromium salts and in accordance with the European DIN standard EN 15987:2015, which has a strict 0.1% chromium concentration limit (mass of chromium/total dry mass of leather) to exclude the addition of chromium salts. We reject any deliveries exceeding this value.

#### VISIBLE SUSTAINABILITY

With the launch of the Spring/Summer 2022 collection, vegetable tanning is not the only sustainability attribute for most of our articles of clothing. The lining is now also made of certified organic cotton and/or recycled polyester. We emphasize our commitment to sustainability on hang tags, sew-in labels and laundry labels. Our NOOS products, which are already vegetable tanned, are gradually being lined using organic cotton, with recycled polyester used for the sleeve lining.

#### FURTHER DEVELOPMENTS

Last but not least, we are proud to announce that we became an LWG member (Leather Working Group, [www.leatherworkinggroup.com](http://www.leatherworkinggroup.com)) in April 2021.

Together, we are working on improving the manufacturing methods. It allows us to form an alliance with other companies and organizations across industries in an effort to protect the environment. This membership shows our commitment to having at least 25% of our products produced by LWG-certified manufacturers within the next 3 year. It is our personal goal to increase this percentage significantly over the coming years.



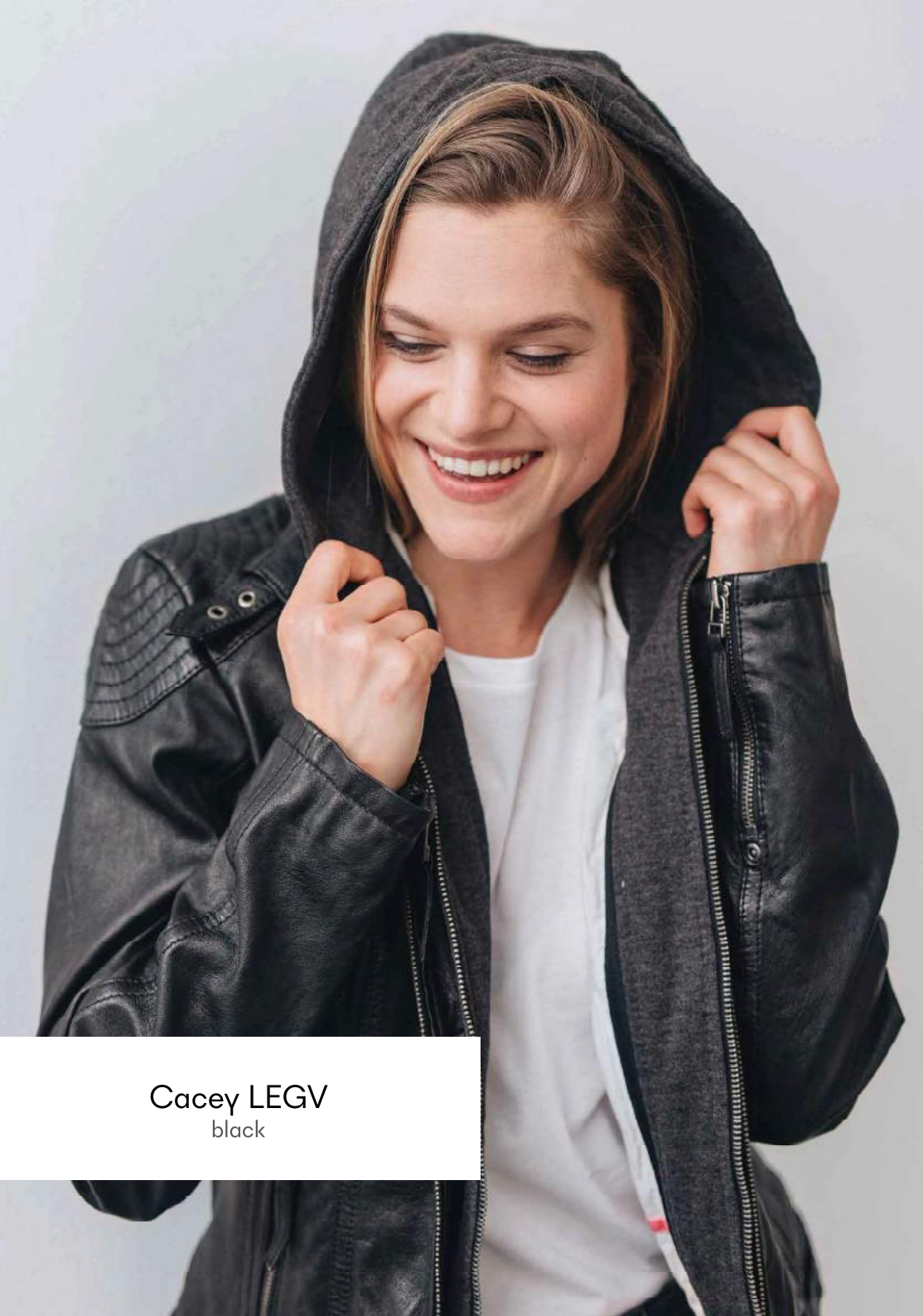


MWBjella  
black



Regular Fit | XS-4XL





Cacey LEGV  
black



Regular Fit | XS-4XL







Regular Fit | XS-4XL



CACEY LEGV  
anthracite





PGG W14 LEGV  
black



Regular Fit | XS-4XL





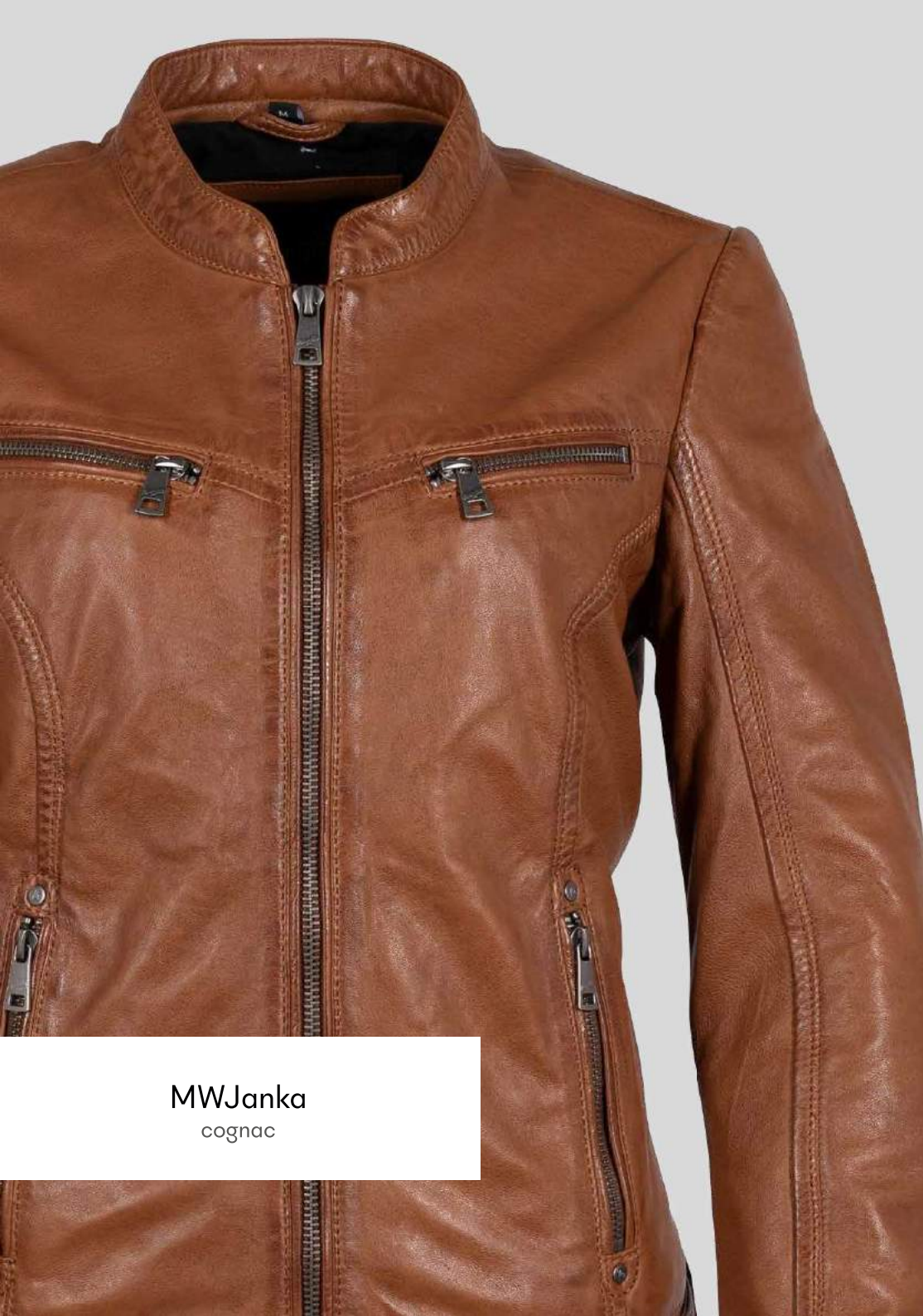
MWJanka  
black



Regular Fit | XS-4XL







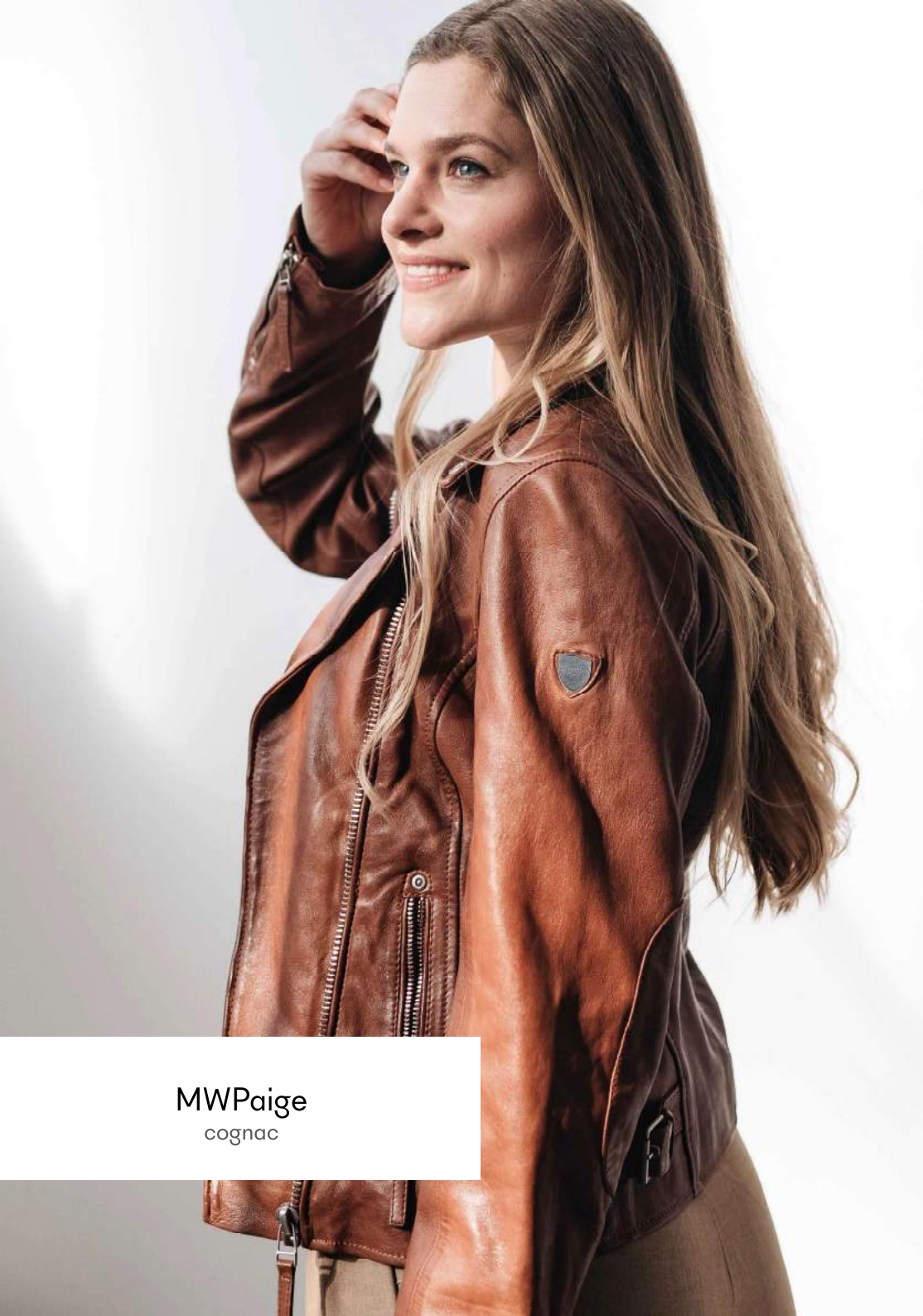
MWJanka  
cognac



Regular Fit | XS-4XL







MWPaige  
cognac



Regular Fit | XS-4XL











GWSwante LNV  
black



Regular Fit | XS-3XL





MWPeggie  
antique black



Regular Fit | XS-4XL







GGSuri LELEV  
black

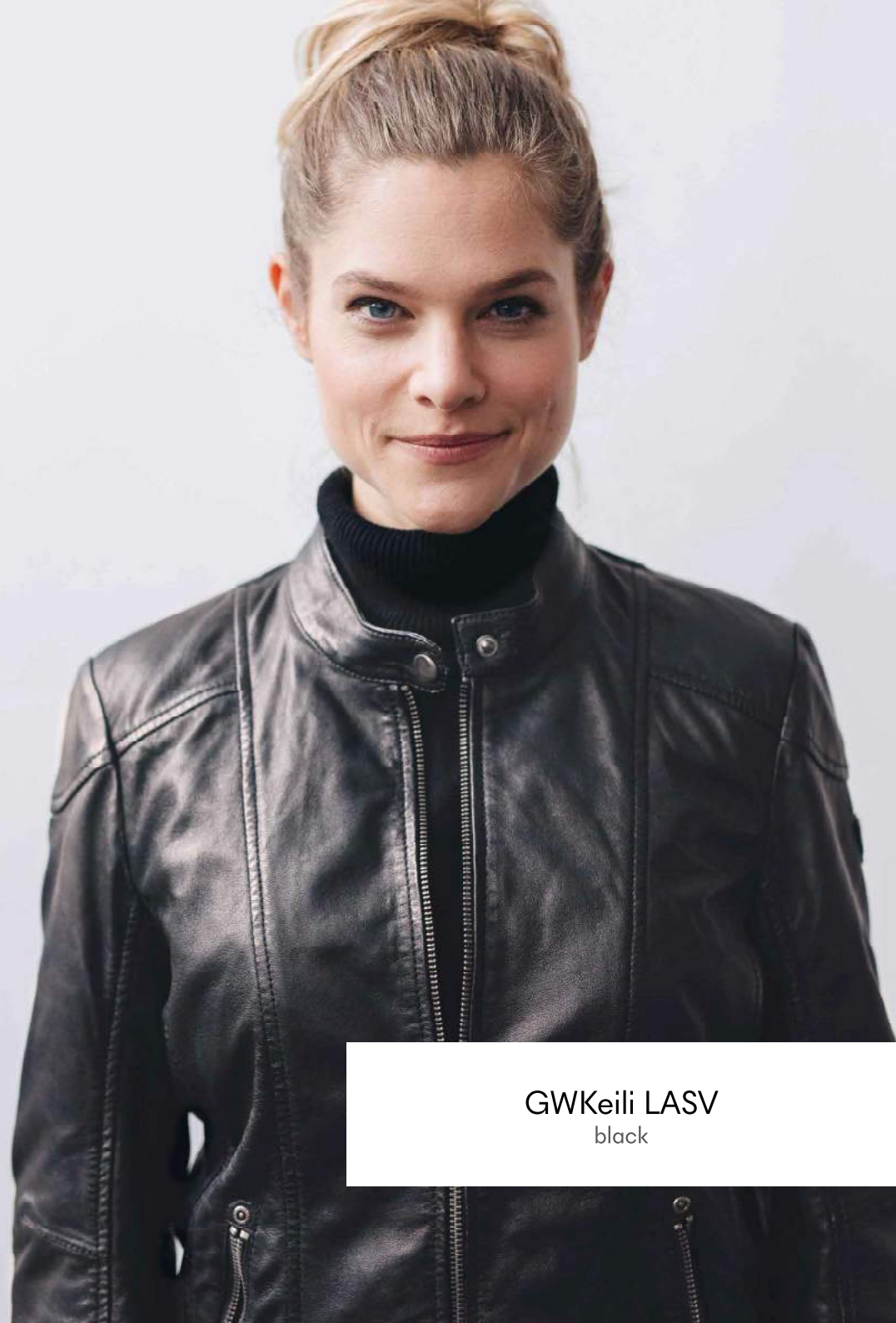


Regular Fit | XS-4XL





Regular Fit | XS-3XL



GWKeili LASV  
black





MWTamika  
black



Regular Fit | XS-3XL

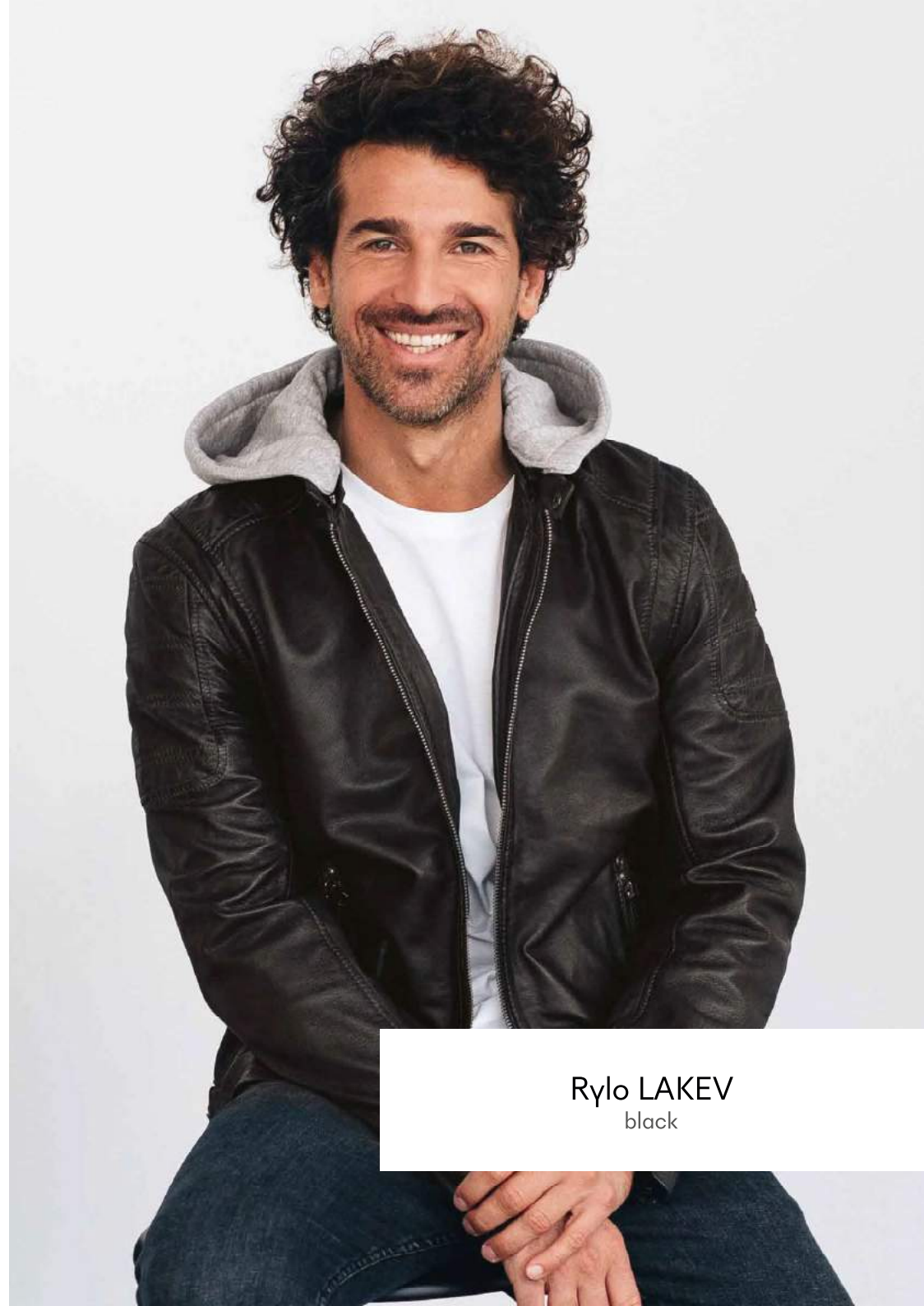








Regular Fit | XS-4XL



Rylo LAKEV  
black



Rylo LAKEV  
anthracite



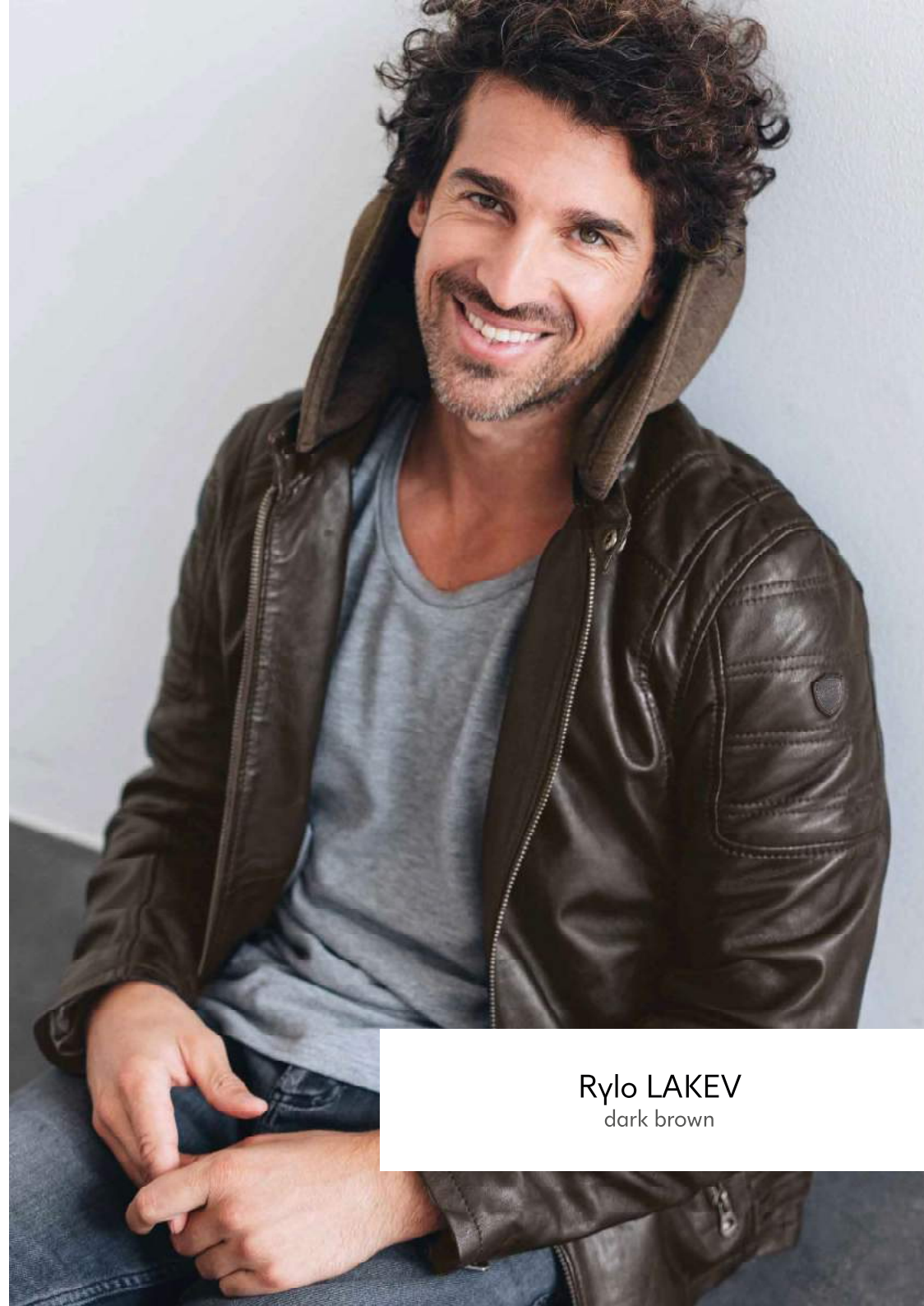
Regular Fit | XS-4XL







Regular Fit | XS-4XL



Rylo LAKEV  
dark brown





GBDerry LAORV  
black



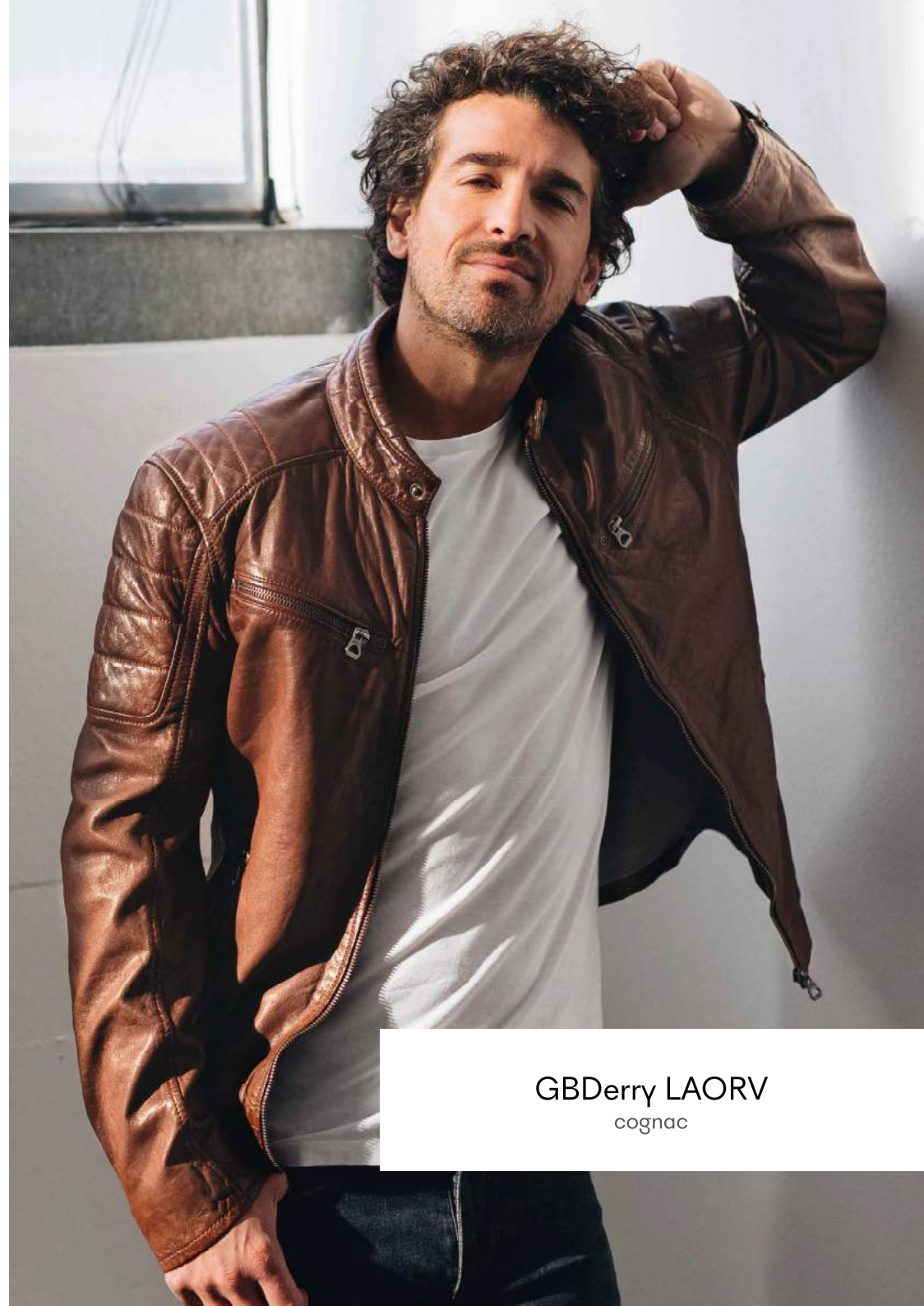
Regular Fit | XS-4XL







Regular Fit | XS-4XL



GBDerry LAORV  
cognac





Mavric SF NSLV  
black



Slim Fit | XS-4XL







Regular Fit | XS-4XL



GMBrody LASV  
dark brown



MMGoran  
black



Slim Fit | XS-4XL







Regular Fit | XS-4XL



MMAdelmo  
antique brown



Print colors may differ from original.  
Other sizes and colors available upon request.  
Webshop online: [dw.mauritius.de](http://dw.mauritius.de)





MAURITIUS GMBH INTERNATIONAL FASHION

Hahnstraße 8  
49835 Wietmarschen  
Germany

+49 5908 9333 70  
sales@mauritius.de  
www.mauritius.de

