

Reflection

The Blooming moment



The Blooming moment

"A flower does not use words to announce its arrival to the world; it just blooms." Matshona Dhliwayo

This Collection celebrates the transient beauty of flowers in different stages of life. We use Keshi pearls(ケシ)to depict the budding, blossoming, and the states when the petals drift with the wind.

*Keshi pearls are noted for their flower petal shapes and shimmering beautiful lustre.They are formed without a nucleus, This is what makes keshis unique. They are rarer and more expensive than normal baroque pearls.





Silver Petal Keshi Ring
material: sterling silver
SKU:REBMRI001



Golden Petal Keshi Ring
material: 18k gold plated sterling silver
SKU:REBMRI002

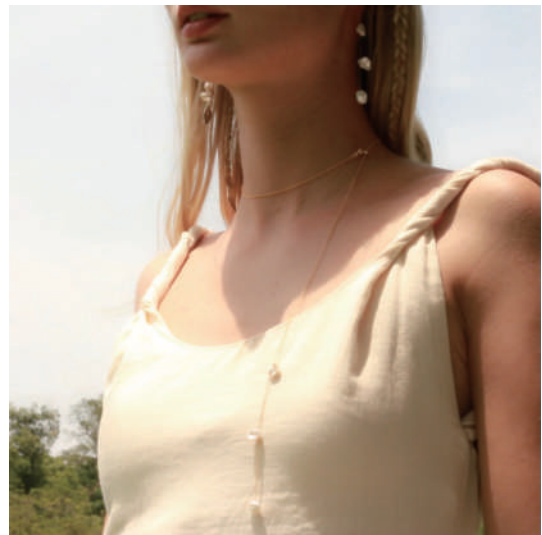


Silver Blooming Moment Keshi Earchain
material: sterling silver, Freshwater Keshi pearls
sku:REBMER001

Golden Blooming Moment Keshi Earchain
material: 18k gold plated sterling silver,
Freshwater Keshi pearls
sku:REBMER002



Drifting Petal Keshi Necklace/ Backlace (gold)
material: 18k gold plated sterling silver,
Freshwater Keshi pearls
sku:REBMNC002



Drifting Petal Keshi Necklace/ Backlace (gold)
material: 18k gold plated sterling silver,
Freshwater Keshi pearls
sku:REBMNC002



Drifting Petal Keshi Necklace/ Backlace (silver)
material: sterling silver,Freshwater Keshi pearls
sku:REBMNC001



Drifting Petal Keshi Necklace/ Backlace (silver)
material: sterling silver,Freshwater Keshi pearls
sku:REBMNC001

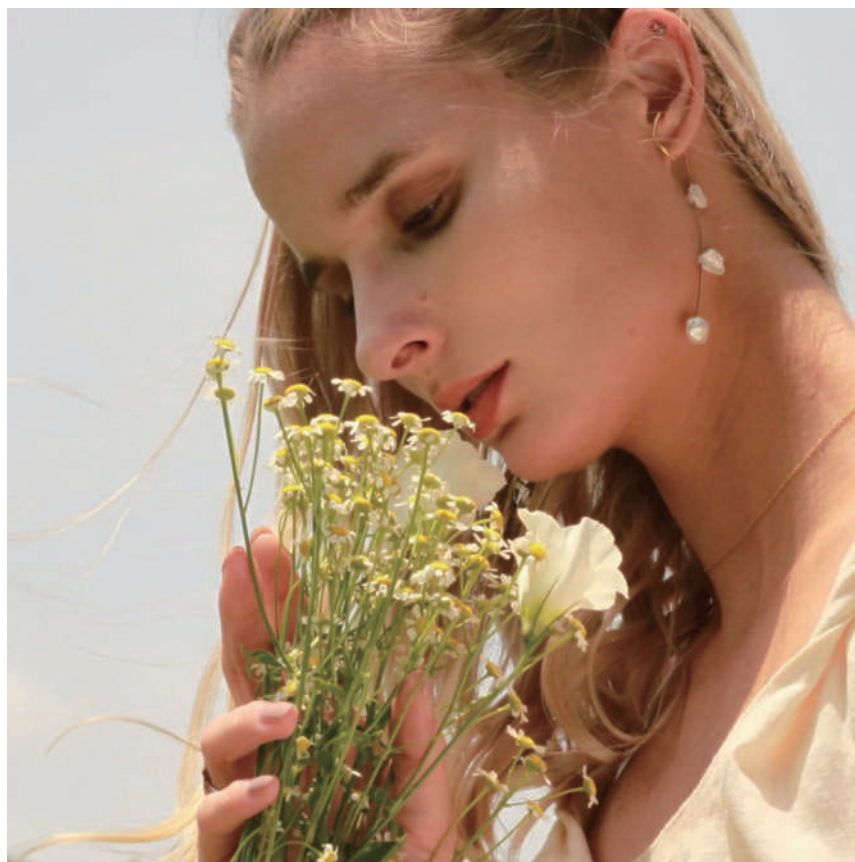


Drifting Petal Keshi Necklace/ Backlace (silver)
material: sterling silver,Freshwater Keshi pearls
sku:REBMNC001

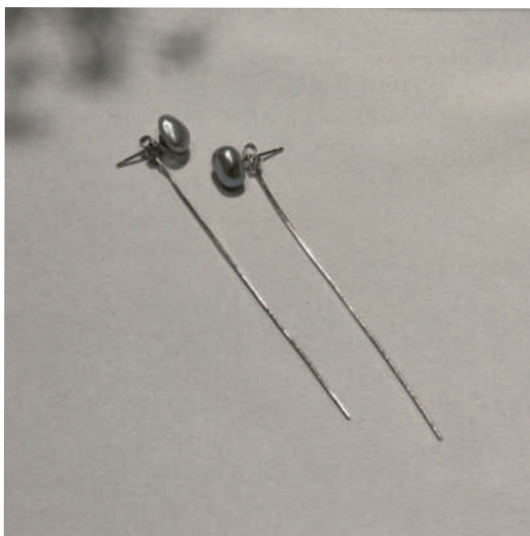




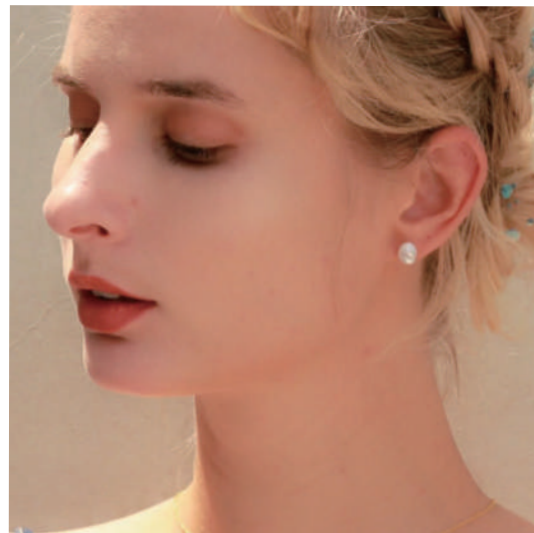
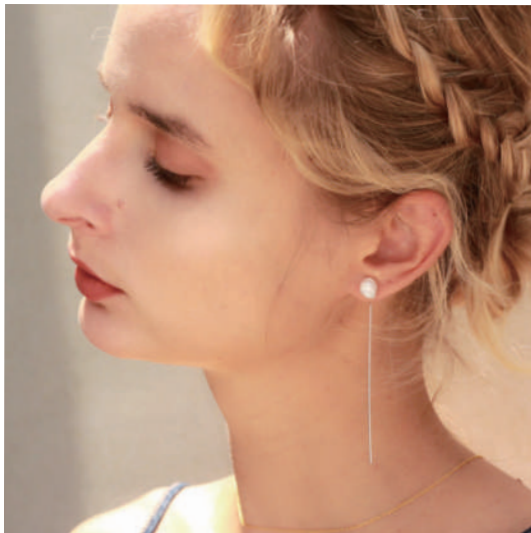
Silver Drifting Petal Keshi Ear Cuff Chain
material: sterling silver,Freshwater Keshi pearls
sku:REBMER003



Goldeb Drifting Petal Keshi Ear Cuff Chain
material: 18k gold plated sterling silver,
Freshwater Keshi pearls
sku:REBMER004



Silver Petal Keshi Ear Stud Chain
(can be worn as basic studs or with the chains)
material: sterling silver, Freshwater Keshi pearls
sku:REBMER005



Golden Petal Keshi Ear Stud Chain
(can be worn as basic studs or with the chains)
material: 18k gold plated sterling silver,
Freshwater Keshi pearls
sku:REBMER006



Silver Pearl Dew Ear Stud Chain (can be worn as basic studs or with the chains)
material: sterling silver,Freshwater pearls
sku:REBMER007

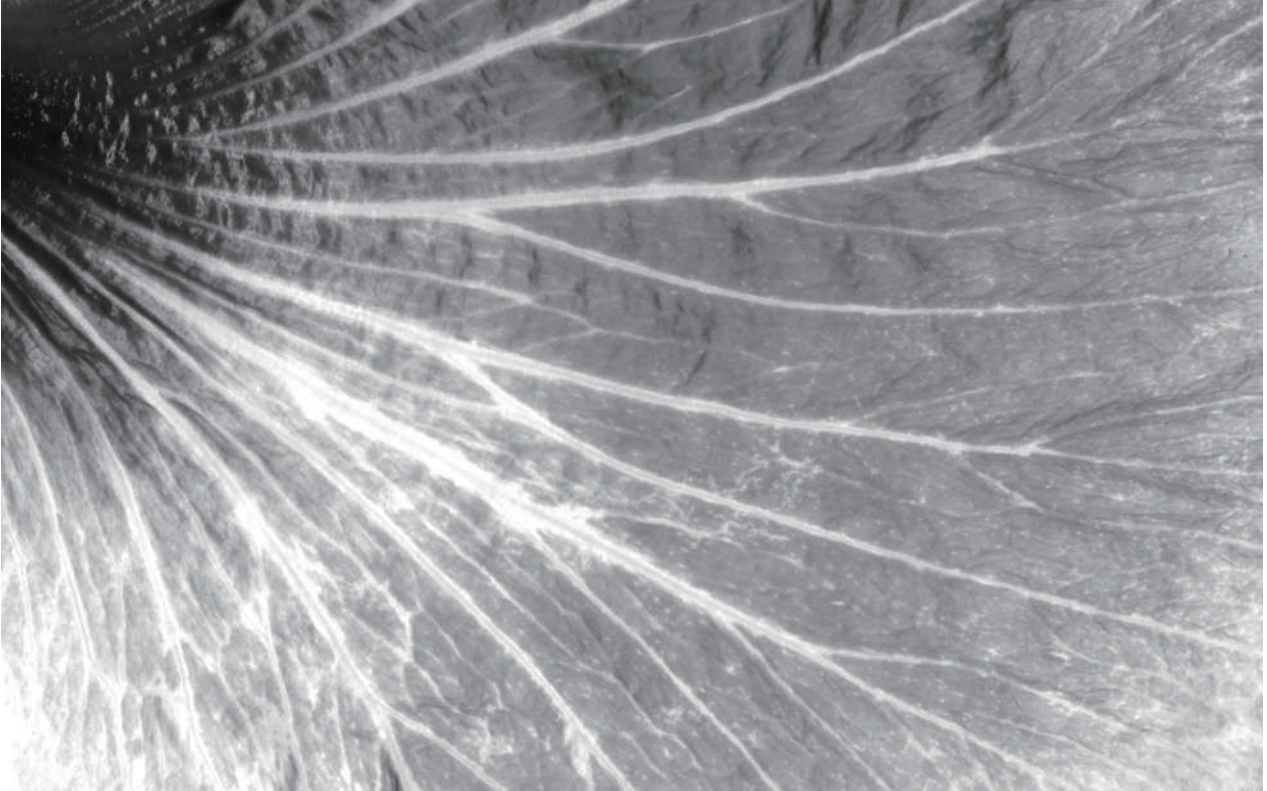
Golden Pearl Dew Ear Stud Chain (can be worn as basic stud or with the chain)
material: 18k gold plated sterling silver, Freshwater pearls
sku:REBMER008



Mobius flow ring/ ear cuff
material: sterling silver
SKU:REBMRI003



Rain Dew Ear Cuff Chain
material: sterling silver
sku:REBMER009



mail@reflection-uk.com



RESTORATION

