

Reflection

A SONG OF THE RIVER



As seen on London accessory week 2022



Ripple Dew Pearl Ring
SKU: REASRI001

Material: Sterling Silver, Freshwater Pearl

As seen on London accessory week 2022



Ripple Dew Necklace
SKU: REASNC001

Material: Sterling Silver, Freshwater Pearl



“Every dewdrop reflects the glints of morning sunlight like a pearl to kindle our hearts.” — Debasish Mridha

As seen on London accessory week 2022



Silver Dew ring
SKU: REASRI002

Material: Sterling Silver



Pearl Dew ring
SKU: REASRI003

Material: Sterling Silver, Freshwater Pearl

As seen on London accessory week 2022



Dew Ear Cuff
SKU: REASER001

Material: Sterling Silver, Freshwater Pearl





The Waterfall Ring/Earcuff
material: Sterling Silver
sku:REVMRI001



The Waterfall Ring/Earcuff
material: Sterling Silver+18k Gold plated
sku:REVMRI002



Silver Ripple Pearl Bracelet
material: Sterling Silver, Premium Freshwater Pearl
sku:REVMBC001

Golden Ripple Pearl Bracelet
material: material: Sterling Silver with 18K gold
plated,Premium Freshwater Pearl
sku:REVMBC002



Silver Moonlight Necklace
material: Sterling Silver, Premium Freshwater Pearl
sku:REVMNC001



Golden Moonlight Necklace
material: Sterling Silver with 18K gold plated,
Premium Freshwater Pearl
sku:REVMNC002



Silver Rain Dew earrings (a pair)
material: Sterling Silver
sku:REVMER001



Goldern Rain Dew earrings (a pair)
material: Sterling Silver with 18K gold plated
sku:REVMER002



The memories of forest- Twilly Silk Scarf
material: Recycled Polyester
sku:REVMSC002



The memories of forest- Twilly Silk Scarf
material: Recycled Polyester
sku:REVMSC002



Golden Time Ripple Ring
Sterling Silver with 18K gold plated, Premium Freshwater Pearl
sku:REVMRI003



The Golden Column Bangle
material: Sterling Silver with 18K gold plated
sku:REVMBC003



The memories of petals- Sheer Silk Scarf
material: Recycled Polyester
sku:REVMSC001



The memories of petals- Sheer Silk Scarf
material: Recycled Polyester
sku:REVMSC001

As seen on London accessory week 2022



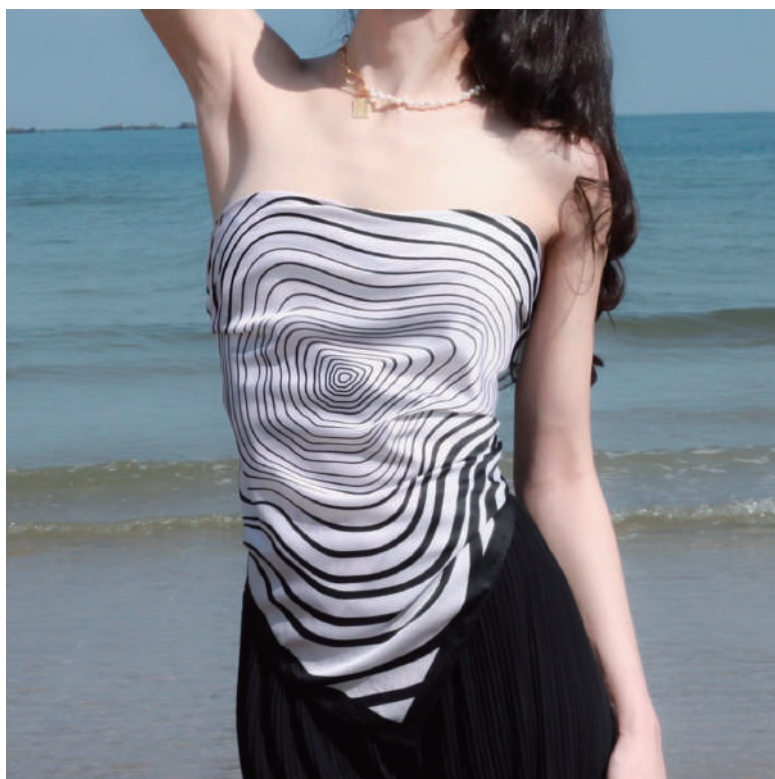
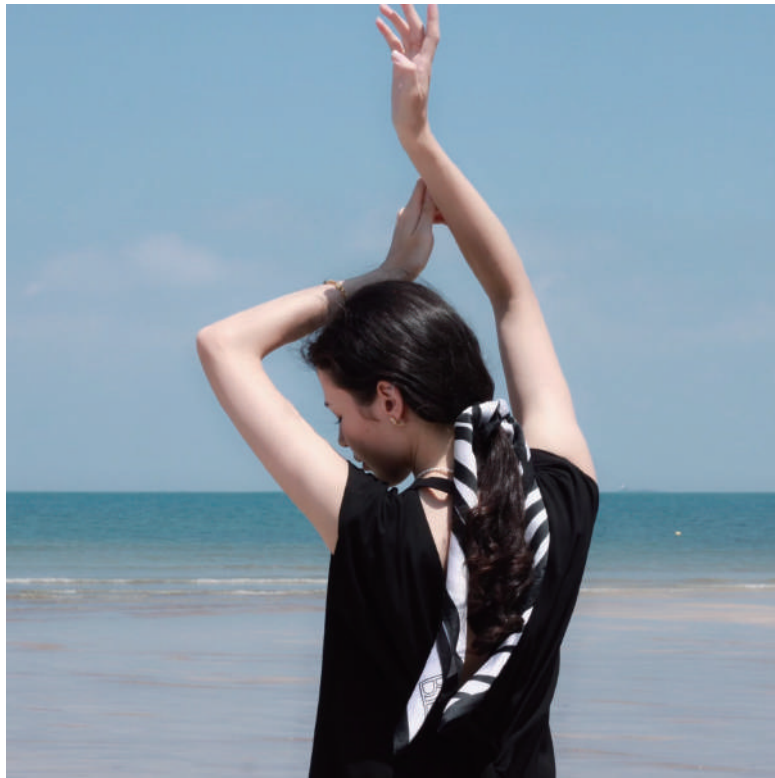
Black Ripple Satin Silk Scarf
SKU: REASSK001

Material: 100%polyester



The silk scarf can be applied as a top with necklace or paired with the ring (which can be applied as a scarf cuff too.)

We wish our pieces can bring people to a serene state of mind through poetic views, and we would like to invite people to explore the effortless and versatile possibility of accessories through our products.



“Dance with the waves, move with the sea,
let the rhythm of the water set your soul free.”
– Christy Ann Martine.

As seen on London accessory week 2022



Blue Ripple Satin Silk Scarf
SKU: REASSK002

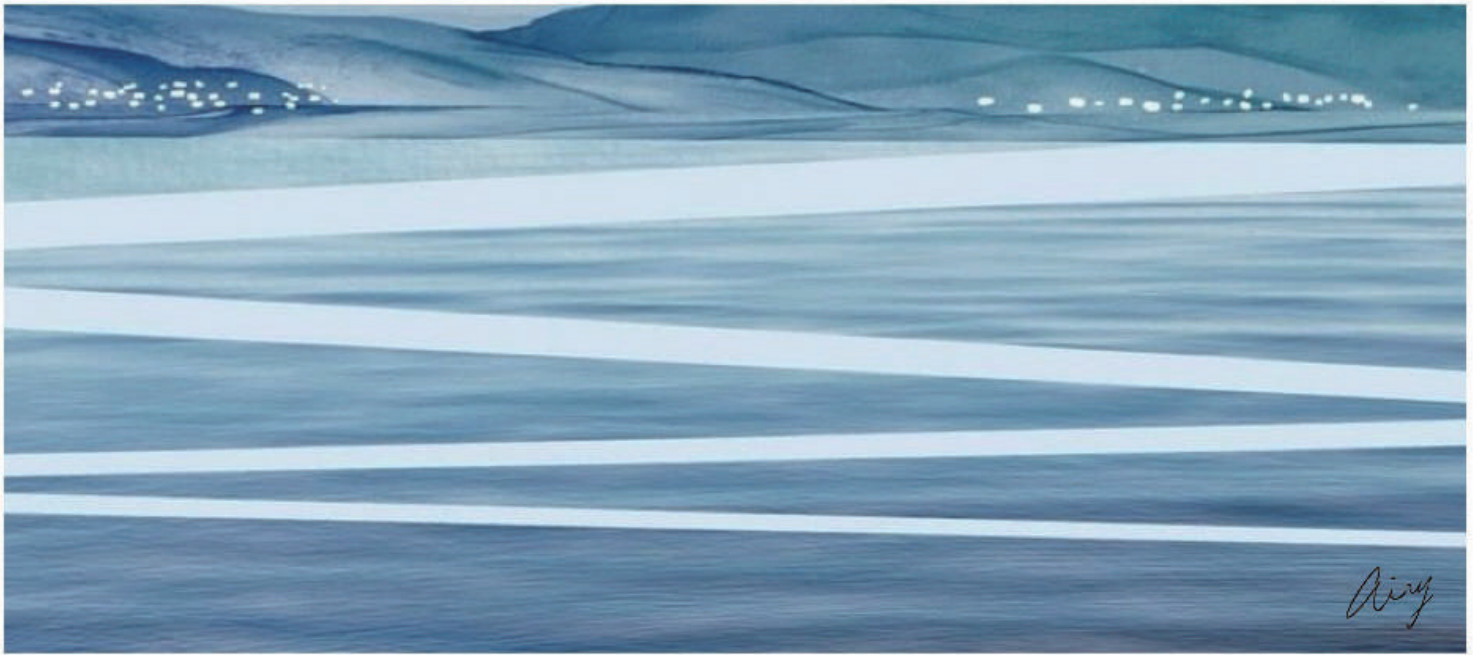
Material: 100%polyester



The silk scarf can be applied as a top with necklace or paired with the ring (which can be applied as a scarf cuff too.)

As seen on London accessory week 2022

スカーフのキャプション) 日月潭の静かな風景からインスパイアされました。



Reflection multi way scarf

SKU: REASSK003

Material: 80%Tencil, 20%Nylon



The silk scarf can be applied as the halter top or paired with the ring (which can be applied as a scarf cuff too.)





Restoration