

# Wild Ideas

New

Look Inside!!!  
**170 Ways...**  
to Encourage  
to Support  
to Enjoy...  
**Wildlife**

wildlife<sup>®</sup>  
world

Winter 2020  
Product Catalogue

WINNERS OF TWELVE WILDLIFE PRODUCT DESIGN AWARDS





wildlife<sup>®</sup>  
world

About us...



#### Who we are...

As Europe's premier designer and manufacturer of wildlife habitats and feeders, Wildlife World has always maintained a strong commitment to the environment. We are proud that our considered and innovative wildlife products make a significant, and on-going, contribution to the survival of species in the UK, Europe and the Americas.

#### Product Testing

Our experienced design team works closely with a range of wildlife experts and advisors to develop only products which are fit-for-purpose. Accordingly, before finalising any products, they are tested locally and in our woodlands in Devon to ensure that they work and are suitable for use by the respective wildlife.

#### Environmental Responsibility

Production of wildlife products must not be at the expense of other wildlife or the environment, which is why we are strongly committed to working to the highest environmental standards. We use FSC certified timber sourced from managed woodlands, recycled timber and, where possible other recycled materials in place of plastics and metals. Most packaging is sourced from recycled materials, and only low toxic water based stains and sealants are used in manufacturing. Additionally, we offset our carbon emissions by contributing to 'Climate Care' and regularly support a range of wildlife charities.

#### Ethical Auditing

As members of 'Sedex' we are committed to social accountability and transparency throughout our supply chains. Actively monitoring and ensuring appropriate Labour Standards, Health and Safety, Care for the Environment and Business Ethics.

#### UK Workshops

Although we work with a number of subcontractors we maintain an

extensive UK based manufacturing facility, fully capable of production, development and bespoke product ranges.

#### Customers

With an ever expanding customer base we currently export to **21 countries**. We are proud to have remained suppliers to the leading wildlife charities in the UK and in Europe for many years, and believe this to be the true testimony for the design and quality of our products.

We are always working to improve!

Thank you for your interest in Wildlife World. Please contact us for further information; we are here to help.

Yours sincerely,

Norman Sellers



*Many of our products are made from natural materials, and whilst we make every reasonable effort to ensure the colour, materials and details are consistent and the printing representative in this catalogue there may be some variance in the delivered products. Additionally, Wildlife World operates a policy of continuous improvement and reserves the right to change product details without notice.*



# Wild Ideas

## Autumn 2020 Product Catalogue

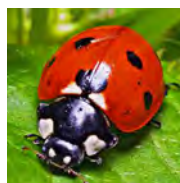
### Index...



#### BEEES, BUTTERFLIES & OTHER POLLINATORS

*Solitary Bees ...*  
*Bumbles Bees ...*  
*Butterflies ...*  
*Food for*  
*Beneficial Insects ...*

4-6  
7  
8  
9



#### BENEFICIAL INSECTS

*Ladybirds &*  
*Lacewings ...*  
*Insect Hotels ...*

10  
11



#### MAMMALS & AMPHIBIANS

*Hedgehogs ...*  
*Bats, Frogs &*  
*Toads ...*  
*Squirrels ...*

12-14  
15  
16



#### WILD BIRDS

*Tables & Feeders ...*  
*Nest Boxes ...*  
*Feeders ...*  
*Feeders-Food ...*  
*Roost Pockets ...*  
*Bird Baths ..*

17-18  
19  
20  
21  
22-23  
24-25



#### CAMERA NEST BOXES

26



#### WILDLIFE WORLD RANGES

*Premium Wildlife Food*  
*Specialist Nest Boxes ...*  
*Supersize Hotels ...*  
*(Bespoke) ...*  
*Education Range ...*  
*Supersize Hotels*  
*(Educational) ...*

27  
28  
29  
30-31  
32



#### FIELD GUIDES

33



#### National Trust

*Wicken Fen ...*  
*Range*  
*Stourhead ...*  
*Range*

34  
35



#### GIFTING RANGE

36-37



#### Simon King Wildlife

36-37





# Bees, Butterflies and Other Pollinators

## Solitary Bees

New



**BAR** - Bee Barrel

Hang your Bee Barrel near nectar-rich plants to provide a nesting place for solitary bees



### POS\_BTIN\_BOX

#### Bee Tin Display Box

Point of Sale Display Box

Available with a purchase of 18 units.

### BTIN The Pollinating Company - Bee Nester

For solitary mason bees, orchard bees & leafcutter bees - **safe bees around pets and children.**

Can help to increase fruit yields in your garden. Up to 180 bee cells. Easy to use.





# Bees, Butterflies and Other Pollinators

## Solitary Bees



### BEEBARN - Bee Barn

Part of our New Barn collection. Dual purpose house for essential pollinators

BEEBARN - with floral wrap and printed box



### POS BBB STAND

Bees and Pollinator Stand  
Stand FOC with £600 purchase of bee/pollinator stock



### DEWIH - Dewdrop Bee & Bug Hotel

A solitary bee nester packed with drilled canes for nesting and small holes for use by other beneficial insects.



### WWSB - Guide to Solitary Bees



### BTU8 - Eco Bee Nesting Tubes

Pack of 30 No. cardboard bee nesting tubes.



### Bee and Insect Tubes Wooden

BTW1 - PK 50

BTW2 - PK 1000

Clean-drilled bee nesting canes.



### BTPL - Bee Tubes Plexiglass PK 20

Pack of 20 No. clear plexiglass bee nesting tubes. Allows easy visual examination.



### BTU6 - 6mm White Cardboard Bee Tubes

Pack of 30 cardboard bee nesting tubes.



# Bees, Butterflies and Other Pollinators

## Solitary Bees



INTERACTIVE

### SBH2 - Solitary Bee Hive

Our original design Solitary Bee Hive is an **interactive solitary bee habitat** constructed in durable FSC certified timber with stacking trays which can be opened for inspection and cleaning. Always a friend to the gardener, attracting solitary bees to the garden is not only safe, but **beneficial to the pollination of flowers, fruit and vegetables**

The hole sizes of this habitat are precisely specified to attract non-swarming bees like the Red Mason Bee, Leafcutter Bee and other solitary bees. These friendly bees are industrious and **safe around children and pets**. The bees are naturally attracted to holes in wood and the Wildlife World solitary beehive provides a habitat that has become harder to find in modern gardens.

Fascinating and great for education, the **beehive trays can be carefully separated** to view the formation of small cells where the eggs are laid, or indeed where predators have been active

### Interactive Features



*The roof section swivels open to reveal a Perspex covered tray, allowing frequent easy monitoring of bee nesting activity and larvae development.*

### SBH1 - Solitary Bee Hive

The original interactive solitary bee habitat constructed in **durable FSC timber** with stacking trays which can be opened to view the bee's egg cells.





# Bees, Butterflies and Other Pollinators *Bumble Bees*



## **CBN3** - Ceramic Bumble Bee, Bird or Mini Mammal Nester

A high fired frost resistant nester providing a dry and ventilated home for **bumble bees**, **birds** and **mini mammals** such as voles and shrews. Includes nesting material.



## **BBN5** - Bumblebee Nester & Mini Mammal Habitat

A bumblebee or min-mammal nester with a new and improved **sliding inspection roof** and perspex cover to avoid disturbing the bees.

## **BBWW** - Organic Nesting Wool

This Bumblebee nesting material is designed to offer bumblebees a start to **making a nest** in Wildlife World bumblebee nesters.



## **HAY** - Organic Nesting Hay

Fine chopped organic nesting hay





# Bees, Butterflies and Other Pollinators *Butterflies*

New



## **BTFBARN** - *Butterfly Barn*

A complete habitat for Butterflies including a nectar feed tray with removable cups which folds up to provide a shelter for over wintering non-migratory butterflies.



*BTFBARN - with floral wrap and printed box*



## **BFE** - *Butterfly Nectar Feeder*

Nectar feeding station for butterflies and bees including a removable feed sponge and nectar cups.





# Bees, Butterflies and Other Pollinators

## Beneficial Insect food



**Seeds-AP1** - Native Wildflower seeds for pollinating bees.



**Seeds-AP2** - Native Wildflower seeds for bumble bees.



**Seeds-AP5** - Native Wildflower seeds for butterflies.

All seeds produced without harmful neonicotinoids



**LFA** - Ladybird Attractant  
Formulated to attract ladybirds which are **natural predators of aphids**. Maybe used with a ladybird tower or insect hotel to encourage ladybird occupancy and over wintering.



**BUFD** - Butterfly Food  
A formulated dry blend of food for mixing with water containing **essential vitamins** suitable for butterflies and moths.



**AP1** - Attractor Pack (Pollinating Bees)  
Attractor Pack for Bumblebees with seeds and species guides

**AP2** - Attractor Pack (Bumble Bees)  
**AP3** - Attractor Pack (Butterflies)



**SPG2** - Species guide to UK Bumble Bees



**AP6** - Wildflower Corner  
Native Wildflower Seeds for Wildlife



## Beneficial Insects

# Ladybirds & Lacewings



**LBT4 - 'Live' Ladybird Lodge** New habitat for release of live ladybirds in your garden. Natural pest solution.



### **LBT- Ladybird/Insect Tower**

Features a hollow chamber filled with straw for shelter and overwintering of ladybirds and insects. **Includes a pole for planting** into flower beds or any garden areas in need of natural aphid control.



### **MBB2 - Minibugs Bobby's Bug House**

Bobby's Bug Box is one of the minibugs collection of small functioning **wildlife habitats** specifically designed for children.





# Insect Hotels

## ICSCV2 - Multi-faceted Insect Centre:

### Features 4 different and interesting insect chambers

A fantastic resource for the garden or school, the Insect Conservation Study Centre is designed to combine interactivity, education and conservation and features a range of habitats for interest and year-round activity.

#### 1 Chamber 1 - Cosy Hay Loft.

A chalet style insect shelter and refuge from predators.

#### 2 Chamber 2 - Bug Zone.

This is the traditional multi insect, over wintering area which will provide insulated nooks and crannies for a wide range of insects including **ladybirds** and **lacewings** which are essential for organic gardening. This area will also be used by solitary bees.

#### 3 Chamber 3 - Over Wintering Zone.

When filled with natural straw this section will provide the **ideal over wintering space** for lacewings which are voracious eaters of aphids (*this area should be treated with Lacewing Attractant in the Autumn*). Lacewings are essential natural predators in an organic garden.

#### 4 Chamber 4 - Solitary Bee Chamber.

The slotted wooden blocks provide the perfect place for the female solitary bee to lay her larvae during spring and summer. **Mason bees** will divide the cells using mud and **leafcutter bees** do the same using leaf circles. The **larvae will develop over summer into winter** and emerge the following spring as adult bees.



## IMBC - Illuminated Minibeast Centre

The illuminated Minibeast Centre is not only great for collecting and studying insects, but features a **solar light which glows in the dark** and can attract moths. Now in picture carton with instructions for use.



# Mammals and Amphibians *Hedgehogs*



## HH10 - Igloo Hedgehog Home

This igloo home offers **hedgehogs and other mammals** a safe and spacious retreat. Features an entrance tunnel to deter predators, a robust steel frame and **waterproofed material** to help give some protection from the worst wet conditions. **Covered with brushwood** for a natural looking finish. May be covered with extra leaves in winter and secured to the ground with tent pegs.



## HH10CPv2 - Hedgehog Care Pack

The Hedgehog care pack contains a hedgehog shelter, a 140g tray of Spikes Meaty Feast Hedgehog food, a ceramic feeding bowl, and a copy of our hedgehog care guide.

**Seasonal only**



## HH7 - Hogilo Hedgehog Home

The Hogilo is made from FSC wood and easy to clean recycled plastic.

**The swivel lid allows easy access** and is ideal for tending to sick or injured hedgehogs. As seen on Spring Watch.



## WWH - Guide to Hedgehogs





# Mammals and Amphibians *Hedgehogs*



## POS\_UKHH\_STAND

- Hedgehog and Squirrel  
Display stand  
Contact sales office for details



## HC1 - Hedgehog Crossing

Reinforce your garden fence to enable  
garden connectivity for hedgehog survival.



## HH13 - Hedgehog Barn

Wooden Hedgehog House with solid floor and extending entrance tunnel

## NEW HEDGEHOG HAUS



## HH11 - Hedgehog Haus

Our unique Hedgehog Haus with a wooden  
entrance tunnel and natural brushwood body,  
covering a waterproof liner.





# Mammals and Amphibians *Hedgehog Food*



**HFDD1KG** - Premium  
Hedgehog Food 1kg



## **HHSB** -

**Hedgehog Snack Bowl**  
Square Hedgehog Snack Bowl  
in frost resistant ceramic with  
drainage hole to preserve food.



## **HHWB** - Hedgehog Water Bowl

Square Hedgehog Snack Bowl  
in frost resistant ceramic



**Spike's Delicious Dry  
Hedgehog Food**  
**SPKDD65** 650g  
**SPKDD25** 2.5kg



**SPKWITH2**  
**Wildthings**  
**Hedgehog**  
**Food 2kg**



**Spikes Delicious Semi  
Moist Hedgehog Food**  
**SPKSM55** 550g  
**SPKSM13** (1.3kg)



**Spike's Meaty Feast**  
**SPKSM55** (140g)



## **SKSOLFD** -

**Hedgehog and  
Mini Mammal  
Night Feeder**

The solar light  
illuminates the  
covered feeding trays  
so you can watch  
nocturnal feeding.

Spikes foods have  
been especially  
formulated for  
hedgehogs; tested  
and approved by  
wildlife hospitals.





# Mammals and Amphibians *Bats, Frogs & Toads*



Upto  
7 Bat  
Species



**CBB - Chavenage Bat Box**  
A single chamber quality roosting box for bats.



**CSVBB - Conservation Bat Box**  
Features twin vertical chambers and a front ladder with secured opening lid for professional inspection. Made to order.



**VBB - Vincent Bat Box**  
Introducing our new bat box based on a design by the Vincent Wildlife Trust featuring **3 vertical chambers** with varying size options for different species & temperature zones. Made to order.



**OBB - Original Bat Box**  
A twin chamber bat box with a high capacity roost for a variety of bat species.



**AP4 - Seed & Guide (Bats)**  
Bat Seed Pack & Guide includes special mix of **wildflower seeds** for night-scented plants that attract bats and a laminated guide.

**Seeds AP4**  
Wildflower seeds to attract bats - No Neonics



**CF/TH2 - Frogilo Frog and Toad Home**  
"Frogilo" is an attractive retreat for frogs, toads and other amphibians giving valuable protection from predators. **Made in frost resistant ceramic**, the "Frogilo" features an open space at the front of the base with an overwintering shelf at the back. Comes with a gift display carton.



# Mammals and Amphibians *Squirrels*

New



## SF2 - Craftsman Squirrel Feeder

Watch as clever squirrels swing the perspex door aside to reach their treats. **All new design with real copper roof** and removable food tray. Available in attractive natural display box.



## RSB - Red Squirrel Nest Box

## SPKBF2

Wildthings Badger &  
Fox Food – 2kg bag

## SQFD - Premium

Squirrel Food 1kg

A delicious blend of premium food for squirrels including their **favourite pine nuts** and a natural source of calcium.



## SF - Squirrel Feeder

Heavy duty squirrel feeder with a landing platform and **rust proof stainless steel hinged lid** which squirrels quickly learn to open and feed. Species likely to use the feeder include red squirrels, grey squirrels and pine martins.

Stainless  
Steel  
Hinge!





# Wildbirds Tables and Feeders



Removable Tray -  
for cleaning

## **BEBT** - Bempton Hanging Bird Table

A hanging bird table featuring a copper Verdigris roof and removable hygiene tray, designed to feed small garden birds in safety.



## **LBEBT** - Large Bempton Bird Table

A large wall mounted bird table with a **copper Verdigris roof with removable Hygiene tray**. Complete with bracket. Designed to attract a range of small to medium garden birds. Now available in attractive natural display box.



## **AP3** - Garden Bird Guide & Attractor Pack

Supporting wildlife charities. Laminated Guide & native UK wildflower seeds grown without neonics and chemicals.

## **SEEDS\_AP3** - Wildflower seeds for Birds - No Neonics



## **ARCHGF2** - Archway Ground Feeder

Introducing our new ground feeder with **stainless steel hygiene tray and Perspex roof** with option to use as a hanging feeder. Designed for flat pack and simple no tool assembly.





# Wildbirds Tables and Feeders



## **LUTB** - Lutyens Swing Seat Feeder (Brown)

New ornate swing seat feeder in the country house style of architect **Edwin Lutyens**. Finish in natural brown. With removable hygiene tray made from recycled second life plastic.



## **SWSF** - Swing Seat Feeder

Delightful hanging bird feeder suitable for a range of feed types **with removable hygiene tray**. Quality screwed construction.

## **ECOBC**

### *Eco Beacon Feeder*

Delightful hanging bird feeder suitable for a range of feed types with removable hygiene tray.

Recycled  
second life  
Plastic



## **FBR** - 'Hygiene Brush Kit

Includes an extendable pipe brush for cleaning the insides of feeders and a double-ended brush for bird table tops, bird boxes and bird baths.

## **SCR2** - Dual Purpose Scraper Tool

This stainless steel scraper tool is designed for both cleaning bird tables and lifting beehive frames.





# Nest Boxes



## NENBG -

### New England Nest Box - Green

Inspired by the beach huts of New England, each nest box features a shingle roof, hole protector, and a side opening for cleaning.



## HP32R - Hole protector

Stainless Steel hole protector for nest boxes. (Now with fixings included)



## DOVENB - Dovecote Nestbox

This is our latest decorative bird nestbox for small birds in the style of a traditional dovecote. The roof has handmade timber shingles with topped with a white finial. The flat-backed nest box body is painted in white with black steel hoops around. The box is suitable for small hole nesting species such as blue tits. Now with new attractive packaging.



## TPN2 - Robin Teapot Nester

A delightful frost resistant ceramic teapot nester in a **green glaze with drainage holes**. Also makes a fantastic bird feeder outside of nesting season. Comes in a display pictorial gift box.



## N8 - Natural Log Robin Nesting Box

A robust open fronted nest box made from hollowed out natural log for use by robins, pied wagtails etc.



## N7 - Natural Log Tit Nesting Box

A robust well insulated tit nest box for tits made from a hollowed out natural log.

**CHM - Ceramic House Martin Bowl**  
Housemartin nesting bowl in unglazed ceramic with FSC timber mounting board.



**CSW - Ceramic Swallow Bowl**  
Swallow nesting bowl in unglazed ceramic with FSC timber mounting board.





# Wildbirds Tables and Feeders



New

BIRDBARN - with  
floral wrap and  
printed box



## BIRDBARN - Bird Barn

This Bird Barn is a fantastic place to watch your favorite garden birds enjoying their dinner. It can be hung from almost anything and is so easy to refill once dinner has disappeared. This product is produced from sustainably managed forests and the plastic board used is recycled



## CERBT - Ceramic Blue Tit Feeder

Novelty small ceramic bird feeder for blue tits, robins, great tits and other garden species.

## CERROB - Ceramic Robin Feeder

Novelty small ceramic bird feeder for robins, blue tits, great tits and other garden species.



Hang Me!



## DEWWFv2 Dewdrop Window Feeder



The Closest  
you will ever see  
Wildbirds!!

Stick Me!





# Wildbirds Feeding 'Premium Food'

No  
Plastic  
Seed  
Feeders



## F3S - Seed Bird Feeder

All metal, super strong seed feeder for bird seed.  
Designed for maximum ease of use and practicality.

## F3SG - Giant Seed Bird Feeder

All metal, super strong seed feeder for bird seed.  
Large capacity, means less frequent filling.

New

## F3XL - Super Sized Bird Feeder

This quality stainless steel seed feeder is **100% plastic free** and provides 12 feeding ports for a backyard feast. The clever catch at the top stops the squirrels from lifting off the lid.

Wildthings Swan & Duck Food

**SPKSD15** - 1.5kg bag

**SPKSD5** - 5kg bag

**SPKSD13** - 13kg bag

(Vat Exempt)





# Roost Pockets

2019  
GIFT OF THE YEAR  
FINALIST



**ROBCP - Robin Winter Care Pack** Provides vital shelter and roosting space for robins during winter. Gift pack includes high quality bird seed in the jute bag. Bird care. Seasonal availability



**RNP7 - Giant Roost Pocket / Small Bird Nester**  
A sturdy nest pocket supported with an inside frame covered with natural fibre.

**RNP8 - Giant Roost Pocket / Open Nester**  
A sturdy nest pocket supported with an inside frame covered with natural fibre.



**RNP1 - Oval Roosting Nest Pocket**  
A nest pocket made from naturally durable materials with built in wire hanger.



**SPF1SWR**  
- British Nesting Wool  
Pack of British wool used by wild birds as supplementary nesting material.



**RNP2 - Tall Roosting Nest Pocket**  
A tall nest pocket made from naturally durable materials with built in wire hanger.



## Roost Pockets

ARTISAN  
WILD BIRD  
NESTER  
Range



These beautiful Artisan nesters are handwoven and handstitched onto a metal frame providing small backyard birds with essential protection against the weather in Winter and nesting in Spring. May be hung or secured into bushes or shrubs with the integrated fixing wire. These are Fair Trade products, great for the birds and for the women in Bangladesh who make these from seagrass and recycled saris.



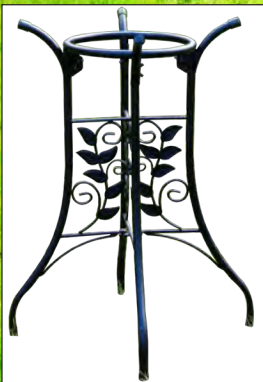


# Bird Baths



## SHBB - 'Shenstone Theatre' Bird Bath and Drinker

Our Shenstone Theatre Bird bath and drinker makes the perfect garden feature for birds, bees and other wildlife. The theatre step design **provides safe drinking not just for birds but other pollinators and insects** which like to sip from the shallow edges of pools. It is embossed around the bird bath rim with the opening lines from the well known verse from the W H Davies poem 'Leisure'



Fully adjustable

## UBBS - 'Vine Leaf'

### Universal Bird Bath Stand

Raise up your existing bird bath with our new 'Vine Leaf' Universal Bird Bath stand. Fits most bird baths





# Bird Baths



10 year  
Guarantee

## CONBB2 - 'Coniston' Bird Bath

An aged stone appearance bird bath made from light weight recycled plastic and clay. Extremely durable. New 'twist' stem - not compatible with tall stem. **10 year material guarantee.**



New



## OASIS - 'Nature Oasis' Bird Bath & Drinker

Essential watering pool for bees, birds, beneficial insects and small mammals. Made from second-life materials and bamboo fibre **10 year material guarantee.**



## EBB - 'Echoes' Bird Bath

Made from frost-resistant glazed terracotta, the Echoes Bird Bath features an attractive ripple step that provides extra footing for birds. Around the rim is imprinted a quote by the poet William Blake 'To see a world in a grain of sand and heaven in a wild flower, hold infinity in the palm of your hand and eternity in an hour'.



## EBBS - 'Echoes' Bird Bath Stand

An optional matching tall stand for use with the Echoes Bird Bath.





# Cameras for Wildlife

## Camera Nest Boxes

WITH  
2 LENS  
OPTIONS



### CCMBOX - Wildlife Camera System and Camera Nestbox

A complete wildlife camera unit featuring a robust multi species nest box with detachable housed camera for all year use with other wildlife habitats. The CMOS colour/infrared camera offers both standard and wide lens options operating in high quality colour during daylight switching to black and white in low light/darkness. Supplied with 30m screened cable and accessories to plug and play into your TV.



### CCBKIT - Colour Infrared Camera Nest Box Kit

A camera ready nest box and easy to install camera kit for watching colour daylight images and black & white images after dusk.

WITH  
2 LENS  
OPTIONS



### CRNB - Camera Ready Nest Box

A nest box ready-made for the installation of a camera kit. It features an opaque side window for additional light and improved daytime camera performance, a pre-fitted camera clip inside the roof, a hinged lid for inspection/cleaning and removable 32mm hole protector.



### CICAMKIT - Colour Infrared Camera Kit

A colour/infrared camera system with 1000 TV line designed for easy installation inside suitable camera nest boxes and other wildlife habitats.





# Product Ranges Premium Wildlife Food



Our range of food products come in fully compostable and resealable pouches.



The pouch is made up of three materials that are laminated together to form this compostable fully sustainable packaging.

The materials used are:



**NOMESS/M**  
**NOMESS/S**



**No Mess Bird Food Medium**  
**No Mess Bird Food Small**



**HEARTS/M**  
**HEARTS/S**



**Sunflower Hearts Medium**  
**Sunflower Hearts Small**



**NOWHEAT/M**  
**NOWHEAT/S**



**No Wheat Bird Food Medium**  
**No Wheat Bird Food Small**



**DUCK/M**  
**DUCK/S**



**Duck & Swan Food Medium**  
**Duck & Swan Food Small**



**HOG/M**  
**HOG/S**



**Hedgehog Food Medium**  
**Hedgehog Food Small**

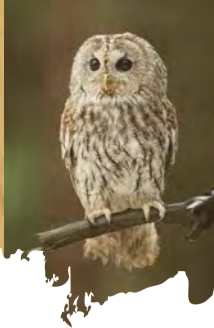


**SQL/M**  
**SQL/S**



**Squirrel Food Medium**  
**Squirrel Food Small**





# Product Ranges Specialist Nest Boxes



*Made to order at our workshops in Tetbury, Wildlife World offers a large range of specialist nest boxes made from naturally durable FSC timbers.*



**BOB3** - Barn Owl Nest Box



**TOB** - Tawny Owl Nest Box



**KB** - Kestrel Nest Box



**LOB** - Little Owl Nest Box



**CSVSPN** - Conservation Sparrow Nest Box

A communal nest box for sparrows featuring a hinged front access door and 32mm stainless steel hole protectors.



**WPB** - Woodpecker Nest Box



**TCB** - Tree Creeper Nest Box



**BLN** - Black Bird Nest Box





# Product Ranges Supersize Hotels 'Bespoke'



Greening the city. One of a pair of insect sculptures atop the London skyline.



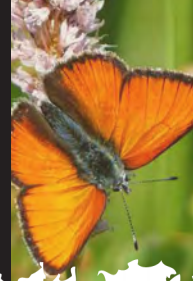
The Russell Square Bug Hotel Installation





## Product Ranges

# Education



### **PYR1- Pyramid Insect Hotel**

Our Pyramid Insect Hotel is our top of the range interactive insect habitat. **It features;** a solar light to attract night flying insects, a butterfly feeding platform, and a removable inspection cassette ideal for studying insects in the classroom.

**Also included** are separate removable inspection drawers for; over-wintering butterflies and other insects, solitary bees with bee tubes in clear plexi-glass, and a separate drawer for litter critters and smaller ground insects. Comes with a Key Stage II Solitary Bee Lesson plan and free pack of UK native top 10 wildflower mixes. **Dimensions - H 1250mm W 870mm D 200mm**







# Product Ranges Education



*Designed for use in schools and made to the highest specifications at our workshops in Tetbury; our education range includes a choice of insect hotels, all supplied with solitary bee lesson plan. All products are made to order using naturally durable FSC timbers.*



## **EDTRI - Crittacabin**

Our Crittacabin provides an impressive multi species habitat for pollinators, beneficial insects, mini mammals and hedgehogs.

**Designed to support the teaching of minibeasts on the Key Stage 1 curriculum**, this habitat is a valuable addition to any school wildlife garden. Features a hedgehog house, logs for solitary bees, ladybirds, lacewings and other beneficial over wintering insects.

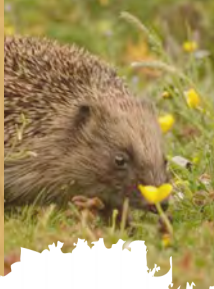
*Dimensions - H 1000mm W 300mm D 420mm*



## **SBLP - Solitary Bee KS2 Lesson Plan**

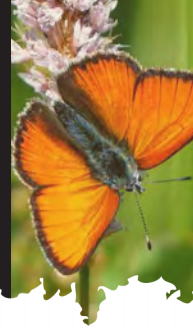
Step by step lesson plans running from January to the end of the Summer Term with essential resources to **teach about the importance of all bees** (bumblebees, honeybees and solitary bees) and their role as pollinators.





## Product Ranges

# Supersize Hotels 'Educational'



*Wildlife World Super-Size Hotels are unique statement pieces ideal for retail environments, leisure parks or for any business wishing to promote solitary bees as essential pollinators for plants and our food chain. Made to order at our workshops in Tetbury, these super-size hotels can be customized with corporate colours and logos.*



### **GIGFP - Giant Insect Biome**

Based upon our best-selling Bee & Bug Biome, this 1.5m tall super-size version features an interactive top chamber which opens to reveal Perspex bee nesting tubes. **The logs and canes provide habitats for solitary bees and other beneficial insects, such as ladybirds.** The bottom chamber filled with pine cones is ideal for lacewings, woodlice and other litter critters.

### **GIH9 - MiniBeast HQ**

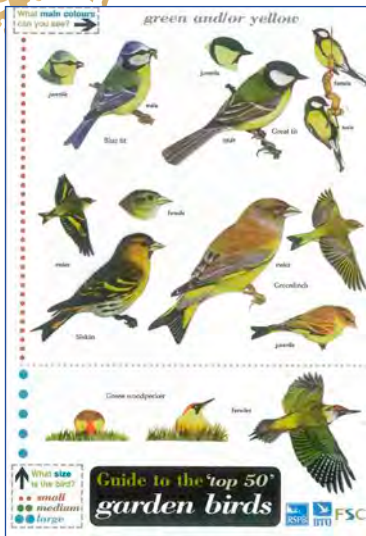
Our MiniBeast HQ is an interactive minibeast central destination. **Some rooms come ready furnished to suit solitary bees or invertebrates such as ladybirds, lacewings, spiders, wood lice.** Some rooms are left empty to allow you to add your own natural materials to attract other critters and minibeasts. At the bottom of MiniBeast HQ is a mini mammal house, which provides a cool dark refuge for shrews, field mice or even frogs and toads.

The HQ is made of sturdy FSC certified timber from sustainable sources with a second life re-cycled plastic roof & fixing bracket for waterproofing and stability.





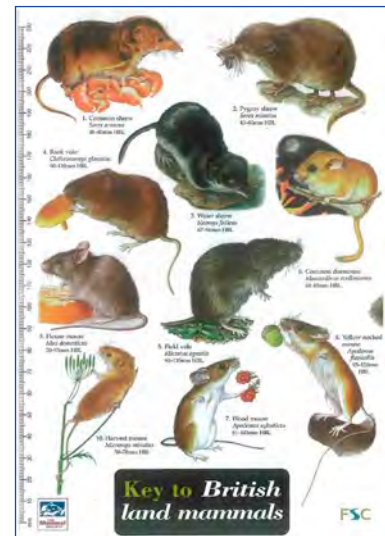
# Field Guides



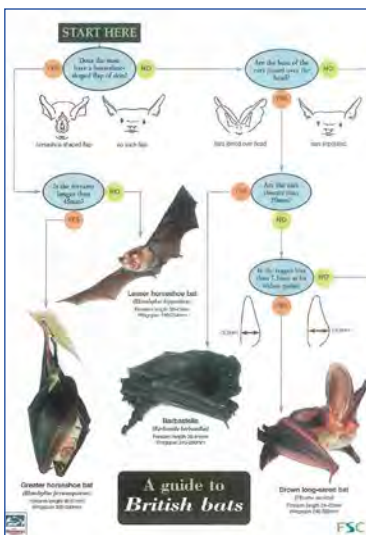
FG1 - Birds



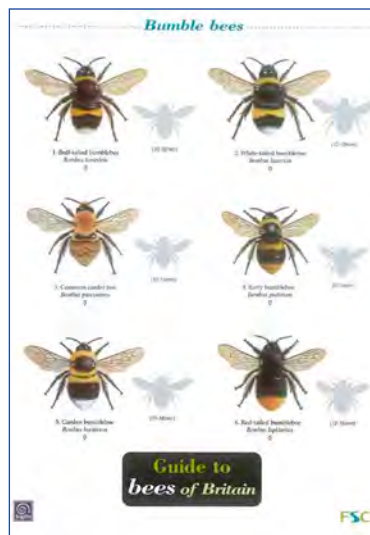
FG3 - Butterflies of Britain



FG4 - British land Mammals



FG6 - British Bats



FG19 - Bees of Britain

**Other Field Guide titles include:**

- FG2 - Tree Name Trail
- FG5 - Caterpillars (UK Butterflies)
- FG6 - British Bats
- FG7 - Reptiles & Amphibians
- FG8 - Wetland Birds
- FG9 - Woodlouse Trail
- FG10 - Fruits & Seed Dispersal
- FG11 - British Mammal Tracks/Signs
- FG12 - Bugs on Bushes
- FG13 - Dragonflies & Damselflies
- FG14 - Keeping Frogs & Tadpoles
- FG15 - Grasshoppers
- FG16 - Fungi Name Trail
- FG17 - Ladybirds
- FG18 - UK Dayflying Moths
- FG20 - Brit. Owls & Owls Pellets
- FG21 - British Birds of Prey



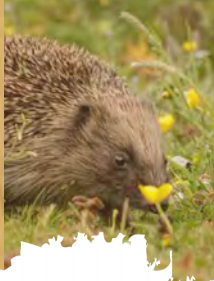
WWH - Guide to Hedgehogs



WWSB - Guide to Solitary Bees

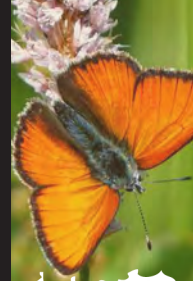






## Product Ranges

# National Trust 'Wicken Fen'



**Natural Bee Log**  
Code: N7PBL\_NT



**Ladybird Tower**  
Code: LBT\_NT



**Natural Log Bird Nester**  
Code: N7\_NT

Our rustic range is inspired by the National Trust's oldest nature reserve, **Wicken Fen**, home to over 9,000 recorded species including many rare birds, butterflies and dragonflies



**Wicken Fen Hedgehog House**  
Code: HH\_NT



**Butterfly/Moth House**  
Code: BTF\_NT



**Minibeast House**  
Code: MMH\_NT





# Product Ranges

## *National Trust*

### *'Stourhead'*



**Birds, Bees and Bugs Hotel**

Code: *ICSC\_NT*



**Multi-species Bird Box**

Code: *ESBN\_NT*



**Bat Box**

Code: *BB\_NT*

Our contemporary product range for the National Trust is Inspired by **Stourhead's** 1,060 hectare countryside estate, home to a variety of wildlife including the tree sparrow and 11 out of 18 UK species of bat



**Classic Copper Bird Table**

Code: *HBT\_NT*



**Lutyens Swingseat Bird Feeder**

Code: *SWSF\_NT*



# Winter Gifting Range

Help your customers find the perfect gift for friends and loved ones this winter. Our latest range of gift bundles have been packed full of Wildlife World's beautiful yet functional products and guides to delight and inform every green fingered novice and enthusiast alike.

As this year has seen an increase of people using and enjoying their outdoor spaces - our gift bundles this season have been designed to help encourage that engagement with nature through-out winter and into next spring. Supporting both the wellbeing of the people creating different habitats in their gardens and the animals that use them.

GP022

## For the love of Birds

Bundled to help feed our feathered friends this winter. **For the love of Birds gift pack** contains our hugely popular 'Bird Barn' bird feeder. Includes one pack of our natural gourmet wild bird food (250g) in our new fully-compostable packaging. Also nesting wool in a plastic-free hessian sack with compostable inner. Plus, our latest conservation guide on Garden Birds.



GP017

## For the love of Bees

...for the love of Wildlife!

Bundled to help the conservation of solitary bees and other pollinators. **For the love of Bees gift pack** contains our charming, customer favourite 'Bee Barn', offering nesting for solitary bees. Natural nesting hay for the 'Bee Barn' and a pack of seeds to grow colourful nectar rich wildflowers that attract and feed bees. Plus, our latest conservation guide on Bees.





GP019

## For the love of Hedgehogs



Bundled to help sustain hedgehogs through-out hibernation. **For the love of Hedgehogs gift pack** contains our stylish and durable ceramic hedgehog water and snack bowls. A bag of highly nutritional natural hedgehog food (950g) in our new fully-compostable zero waste packaging. Plus, our latest conservation guide on Hedgehogs.

GP018

## For the love of Butterflies

Bundled to help create a habitat haven for butterflies. **For the love of Butterflies gift pack** contains the 'Butterfly Barn', another product from our best-selling 'Barn' range. Our specially formulated Butterfly food and a pack of seeds to grow colourful nectar rich wildflowers that attract and feed butterflies. Plus, our latest conservation guide on Butterflies.



GP009

## For the love of Gardens



We have tailored this cottage garden themed gift pack to encourage small birds such as robins into your garden using the teapot nester which is a firm favorite with small birds. We have also included our great bird guide which allows you to identify the birds you have attracted using the petal feeder and gourmet bird food included.

GP021

## For the love of the Environment

Bundled to help birds and Fair-Trade workers. **For the love of the Environment gift pack** contains our brand new handmade stunning Fair-Trade Artisan Bird Nester. Includes one pack of our natural gourmet wild bird food (250g) in our new fully-compostable packaging. Also nesting wool in a plastic-free hessian sack with compostable inner. Plus, our latest conservation guide on Garden Birds.







# Product Ranges

## Simon King Wildlife Range

**Simon King**  
Wildlife



### SKROBRNP - Simon King Robin

#### Nester - Brushwood

The Brushwood Robin Nester is an **original design by Simon**, who has used his knowledge of birds and robins in particular to create a habitat that is tailored to the nesting habits of the species. The **brushwood finish** allows the nester to be hidden easily amongst foliage, or as an eye-catching focal point in a garden. An ideal roosting space for all small birds



### SKROBNB - Simon King Robin

#### Nester - Wood

Robins prefer an **open fronted nester**, with just enough cover to protect them from prying eyes of predators. Here we have the fully open doorway with a side entry nest area all under the cover of the green painted roof

### SKWHISPHIDE - Ultimate Wildlife

#### Watching Hide

The Ultimate Wildlife Hide designed in association with Simon King OBE. This a **fully featured, quick pop-up form** in in strong shower-proof camouflage polyester for ultimate performance.

"Our prototype was used within 48 hours" - SK



### SKCATPRFNB - Predator Defense Nest Box

Predator resist small bird nestbox. This a **super strong and extra deep nestbox** for extra protection from predators such as cats, rats and woodpeckers. It has a water-based green painted roof and a 32mm hole protector suitable for small hole nesting species up to the size of Great Tits.

### SKBATRACK The Bat Rack

The Bat Rack is a simple yet very effective solution to offering **free hanging bat species** a convenient roosting point. The Bat Rack can be used in any roof space where bats have uninterrupted access.

Our prototype was used within 48 hours!







# Product Ranges

## Simon King Wildlife Range

**Simon King**  
Wildlife

"I was inspired by watching coal tits nesting in a tree fissure" - SK



### SKYYN - Simon King Curve, Cavity Nest Box

A unique habitat for a variety of small birds including most Tit species, Sparrows, Flycatchers etc



### SKSOLFD - Hedgehog and Mini Mammal Night Feeder

The solar light illuminates the covered feeding trays so you can watch nocturnal feeding.



### SKTCBRNP Brushwood Tree Nest Pouch

A unique habitat for a Variety of Species including Wrens and Tree Creepers. May also attract Robin, Goldcrest, Wagtail, Marsh Tit, Willow Tit, dormouse and Woodmouse. **Made from a natural brushwood design**, with a strong metal frame to protect birds from predators.

### SKWREATH Wreath Nester

The Simon King Wreath Nester design features both an open entrance door and **secluded nest space** behind the side wall. In addition to nesting, small birds may use the wreath as a shelter from harsh weather.



New

### SKCABIN - Simon King Cabin Nester - Brushwood

The Simon King Cabin design features both an open entrance door and secluded nest space behind the side wall. In addition to nesting, small birds may use the cabin as a **shelter from harsh weather**. A metal frame gives the cabin strength and the roof has a cosy liner.







wildlife  
world®

Meet the  
Team...



Why not head on over to our  **YouTube** channel to meet the team and discover more about our unique product designs...

<http://www.youtube.com/user/WildlifeWorldUK>

Watch...

'How to' Guides  
...with Chantal

**Video Title...**

'Get your garden hedgehog ready'



Watch...

Expert advice from our  
Wildlife Ambassador  
...Simon King

**Video Title...**

'Help your garden birds to roost'



Watch...

Welcome to  
our Workshops

**Video Title...**

'Behind the scenes in the  
Wildlife World Workshop'







**Wildlife World is Europe's leading designer and manufacturer of wildlife products**

**Designed at our workshops near Tetbury, all products are tested at our farm and woodlands to ensure that they are fit for purpose and use by wildlife.**

*Pioneers in promoting conservation awareness and education, we invest heavily in new product development to bring our customers unique and award winning products.*

*Quality of design and manufacture using naturally durable and sustainable materials is paramount in everything we make.*



**For more detailed information please contact us.  
We are here to help...**

**Wildlife World Ltd**  
Manor Farm Barn, Chavenage  
Nr Tetbury, Gloucestershire,  
GL8 8XW England

**Tel: + 44 (0) 1666 505333**  
**Fax: + 44 (0) 1666 505320**  
**Email: [info@wildlifeworld.co.uk](mailto:info@wildlifeworld.co.uk)**  
**[www.wildlifeworld.co.uk](http://www.wildlifeworld.co.uk)**



WildlifeWorldUK



WildlifeWorldLtd



@wildlifeworlduk