

HOMWARE + ACCESSORIES



Emily Smith

# Contents

<b>04</b>	OUR STORY	<b>12</b>	COASTERS	<b>20</b>	NOTEBOOK & PEN SET
<b>06</b>	MUGS	<b>14</b>	TEA TOWELS	<b>22</b>	PRINT SETS
<b>08</b>	JUGS	<b>16</b>	COSMETIC BAGS	<b>24</b>	PRINTS
<b>10</b>	PLACEMATS	<b>18</b>	UMBRELLAS		





*They said paint it mum  
... so I did*

## *Our Story*

Emily Smith is a British brand that launched in 2018.

Emily is a dairy farmer's wife and mother to two fantastic children, her venture all started with a painting she did for her son's bedroom. She then stepped out of her comfort zone from a simple canvas to pursue and grow her love for design. She has now curated a collection of luxury homewares and accessories, one to make a person smile. Each of Emily's designs brings character and charm, inspired by the imaginations of her children, William and Livy, and from living in the beautiful Devon countryside.

Emily is proud to support British manufacturing and she has a real passion for combining colour, fun and quality.

Discover her passion...

# Mugs



SKYLA KINGFISHER



LUANNA LEOPARD



STELLA SLOTH



ELLIOTT & GEORGINA  
GIRAFFE



TAJ TOUCAN



CAMILLA OSTRICH



FLOSSY & AMBER FLAMINGO

- Fine Bone china mugs
- British made
- 400ml

- Hand painted rims
- Dishwasher safe
- Microwave safe





CAMILLA OSTRICH

- Fine Bone china jugs
- British made
- 1 pint, ½ pint & ¼ pint

- Hand painted rims
- Dishwasher safe
- Microwave safe







SKYLA KINGFISHER



TIPI KINGFISHER



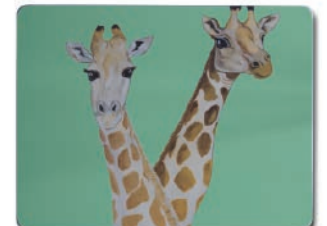
TAJ TOUCAN



CAMILLA OSTRICH



FLOSSY & AMBER  
FLAMINGO



ELLIOTT & GEORGINA  
GIRAFFE

- British made
- Moulded melamine
- 29cm x 22cm

- Dishwasher safe  
on (cool wash)





Coasters



SKYLA KINGFISHER



TIPI KINGFISHER



TAJ TOUCAN



PERCY & PENELOPE  
PARROT



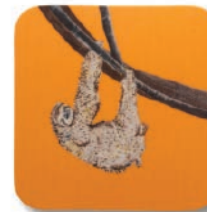
FLOSSY & AMBER  
FLAMINGO



ELLIOTT & GEORGINA  
GIRAFFE



CAMILLA OSTRICH



STELLA SLOTH



OSCAR OCTOPUS

- British made
- Moulded melamine
- 9.5cm x 9.5cm

- Dishwasher safe  
on (cool wash)







# Tea towels



SKYLA KINGFISHER



OSCAR OCTOPUS



LUANNA LEOPARD



FLOSSY & AMBER  
FLAMINGO



CAMILLA OSTRICH



PERCY & PENELOPE  
PARROT

- British made
- 100% cotton
- 37cm x 69cm

- Tumble dryer & iron safe (low heat)





## Cosmetic bags



SKYLA KINGFISHER



LUANNA LEOPARD



OSCAR OCTOPUS



CAMILLA OSTRICH



PERCY & PENELOPE  
PARROT



CAMILLA OSTRICH  
(MULTI PRINT)



FLOSSY & AMBER  
FLAMINGO

- British made
- Cotton
- 30cm x 15cm

- Silk beehive tassel
- Black waterproof lining





CAMILLA OSTRICH



TAJ TOUCAN



LUANNA LEOPARD



SKYLA KINGFISHER



FLOSSY & AMBER FLAMINGO



- British designed
- Fiberglass ribs
- Wood shaft & handle
- Pongee canopy (quick dry, anti-tear)

- Push-button automatic open
- Nickel rib tips
- Nickel top tip is resistant to cracking if used as walking stick



Notebook & pen set



SKYLA  
KINGFISHER



OSCAR  
OCTOPUS



LUANNA  
LEOPARD



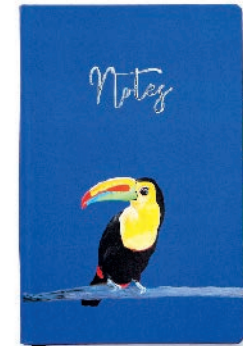
CAMILLA  
OSTRICH



FLOSSY & AMBER  
FLAMINGO



STELLA  
SLOTH

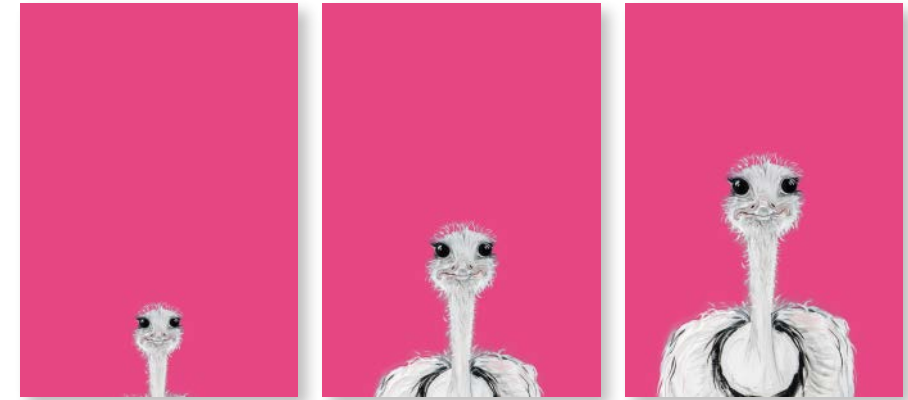


TAJ TOUCAN

- A5
- Soft touch cover
- Pen included

- Internal document pocket
- Pen loop & elasticated band closure
- FSC lined paper





CAMILLA PINK OSTRICH



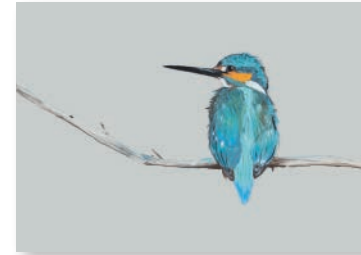
CAMILLA WHITE OSTRICH

- A4 & A3
- 300gsm paper
- FSC sourced

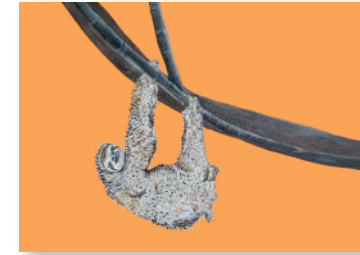
- Supporting the Woodland Trust's Carbon Capture Scheme







SKYLA KINGFISHER



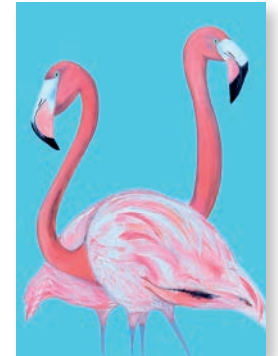
STELLA SLOTH



LUANNA LEOPARD



TAJ TOUCAN



FLOSSY & AMBER  
FLAMINGO

- A4 & A3
- 300gsm paper
- FSC sourced

- Supporting the Woodland Trust's Carbon Capture Scheme





SUPPORTING **UK** MANUFACTURING

[WWW.EMILY-SMITH.UK](http://WWW.EMILY-SMITH.UK)

#EMILYSMITHDESIGNS

 EMILYSMITHDESIGNS

