



20 21
GIFT OF THE YEAR
WINNER



JULIA GASH @ PARKWOOD SPRINGS

A TAILOR MADE COLLECTION OF SUSTAINABLE AND STYLISH SOUVENIRS



NEW LOWER MINIMUM
ORDER QUANTITY



**PARKWOOD
SPRINGS**

www.parkwood-springs.com

JULIA GASH @ PARKWOOD SPRINGS

Working closely with British designer Julia Gash, Parkwood Springs make stylish and sustainable souvenirs for tourists with taste and staycationers who simply want to love up their local.

ABOUT PARKWOOD SPRINGS

ETHICALLY SOURCED LICENSED MERCHANDISE

We license artists and promote their creative work on an array of printed products. We provide beautiful ranges of ethically sourced products printed with the designs of creative distinguished artists from around the world.

Julia's hand drawn illustrations are renowned the world over; to stock the Julia Gash range of contemporary and sustainable giftware in your store please contact us.

www.parkwood-springs.com



ABOUT THE DESIGNER

Julia Gash is a British artist who is passionate about print. She creates hand drawn illustrations using brush and ink and collaborates with licensees worldwide to create sustainable and stylish gift and souvenir ranges.

Julia's distinctive handwriting is expressed as spirited and creative line drawings with flat and textured colour palettes. Over the past four years Julia has created a unique and everlasting archive of illustrations celebrating the unique culture of cities from all around the world, which have been made into gorgeous gifts.

www.juliagash.co.uk

LOVING THE WORLD AROUND HER

CREATIVE MAPS FOR CULTURE VULTURES AND TOURISTS WITH TASTE

Julia creates Cityscapes: Map like illustrations of specific cities, towns or buildings from around the world that celebrate local culture and iconic landmarks using a naïve and playful handwriting.

Building your range is easy with a wide choice of natural tote bags and purses, cool home accessories, amazing art prints and stylish stationery.

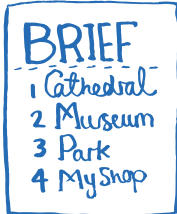
Parkwood Springs works closely with you to ensure that your exclusive Cityscape meets your brief and is delivered on time.



HOW IT WORKS...

let's GO

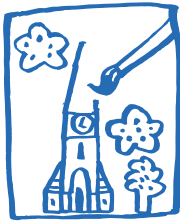
STEP 1. CREATE YOUR BRIEF



Simply complete and email us the Parkwood Springs Design Brief and Agreement with your top 10 must have features.



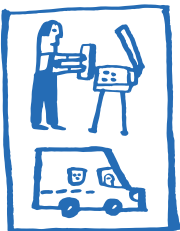
STEP 2. MADE TO ORDER



Julia creates an illustration from your brief using brush and ink. You approve the design and visual mock ups before we go to print.



STEP 3. PRINT, PACKAGING & POST



We work with local and sustainable suppliers to produce high quality, eco-friendly products and send them to you by courier wherever you are in the world.





Choose from a range of large, medium and mini tote bags and zip purses made from natural or denim 100% cotton heavyweight canvas as the perfect backdrop for your design. Pre-washed to achieve superior print quality, our canvas totes and accessory pouches are made in fair trade certified factories in India then printed with ecological water-based inks in the UK.

BEST SELLER

LARGE NATURAL PORTRAIT TOTE

SIZE: W37 x H42 x D11cm

SCREEN PRINTED: ZJGBAGN001B

PRINT MIN: 50

LEAD TIME: 6-8 weeks from approval

Printed one side, gusseted.

Product comes 100% cotton as standard with a product barcode and Julia Gash swing ticket.

Extras: Customer specified barcode
Customer specific swing tag
Customer specific button badge

LARGE NATURAL LANDSCAPE TOTE

SIZE: W42 x H36 x D11cm

SCREEN PRINTED: ZJGBAGN002B

PRINT MIN: 50

LEAD TIME: 6-8 weeks from approval

Printed one side, gusseted.

Product comes 100% cotton as standard with a product barcode and Julia Gash swing ticket.

Extras: Customer specified barcode
Customer specific swing tag
Customer specific button badge



LARGE DENIM PORTRAIT TOTE

SIZE: W37 x H42 x D11cm

SCREEN PRINTED: ZJGBAGD001B

PRINT MIN: 100

LEAD TIME: 6-8 weeks from approval

Printed one side, gusseted.

Product comes 100% cotton as standard with a product barcode and Julia Gash swing ticket.

Extras: Customer specified barcode
Customer specific swing tag
Customer specific button badge

NATURAL
HANDLES!



LARGE NATURAL PORTRAIT TOTE

SIZE: W37 x H42 x D11cm

SCREEN PRINTED: ZJGBAGN001A

PRINT MIN: 50

LEAD TIME: 6-8 weeks from approval

Printed one side, gusseted.

Product comes 100% cotton as standard with a product barcode and Julia Gash swing ticket.

Extras: Customer specified barcode
Customer specific swing tag
Customer specific button badge



LARGE NATURAL LANDSCAPE TOTE

SIZE: W42 x H36 x D11cm

SCREEN PRINTED: ZJGBAGN002A

PRINT MIN: 50

LEAD TIME: 6-8 weeks from approval

Printed one side, gusseted.

Product comes 100% cotton as standard with a product barcode and Julia Gash swing ticket.

Extras: Customer specified barcode
Customer specific swing tag
Customer specific button badge

CHOOSE YOUR HANDLES. ADD A BUTTON BADGE

Each bag comes with natural or striped handles as standard.
Why not add a customised 25mm button badge at an additional cost?



NATURAL

OR



RED, WHITE
& BLUE

+



OR



**SPECIAL
ORDER**

We can make other bag sizes and specifications to special order, subject to designer approval. (SCREEN PRINTED ONLY)

MINI TOTE - ACCESSORY POUCH COMBO OFFER

Why not split the quantity and get the best of both worlds!

For instance, if ordering a quantity of 100 of the denim products you can mix it up and buy half (50) Accessory Pouch and the other half (50) Mini Totes.

Why is this possible? Because the print design and size is the same, this creates a cost-effective way to expand your range.

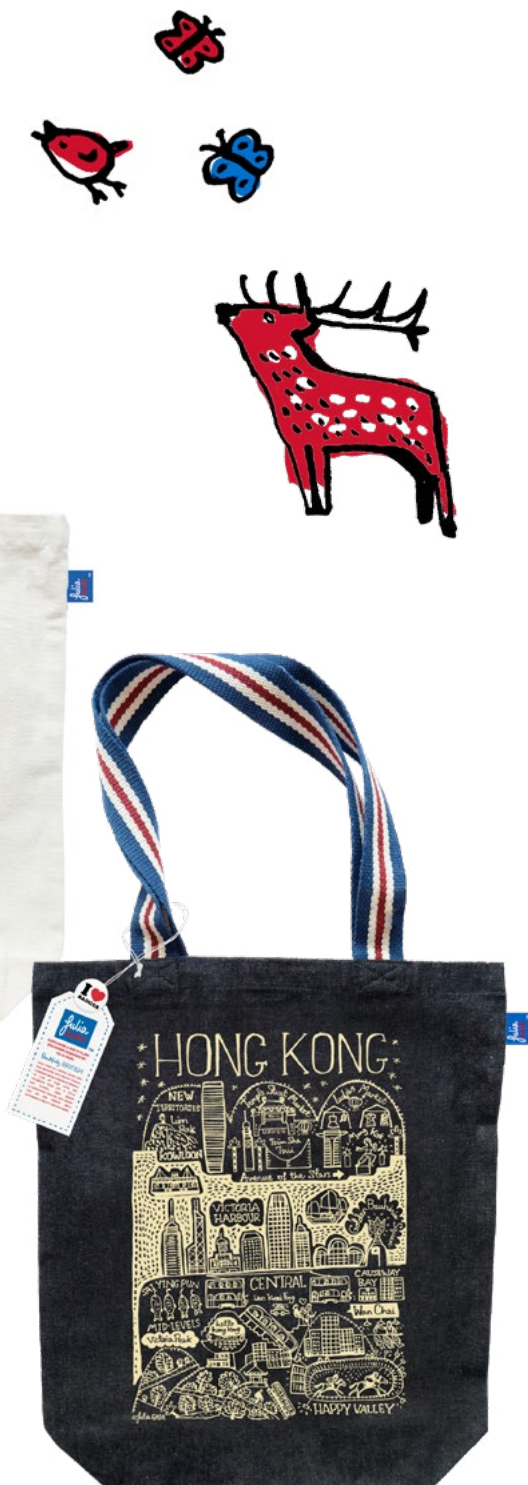


MEDIUM NATURAL PORTRAIT TOTE

ZJGBAGN005B PRINT MIN: 300

MEDIUM DENIM PORTRAIT TOTE

ZJGBAGD005B PRINT MIN: 300

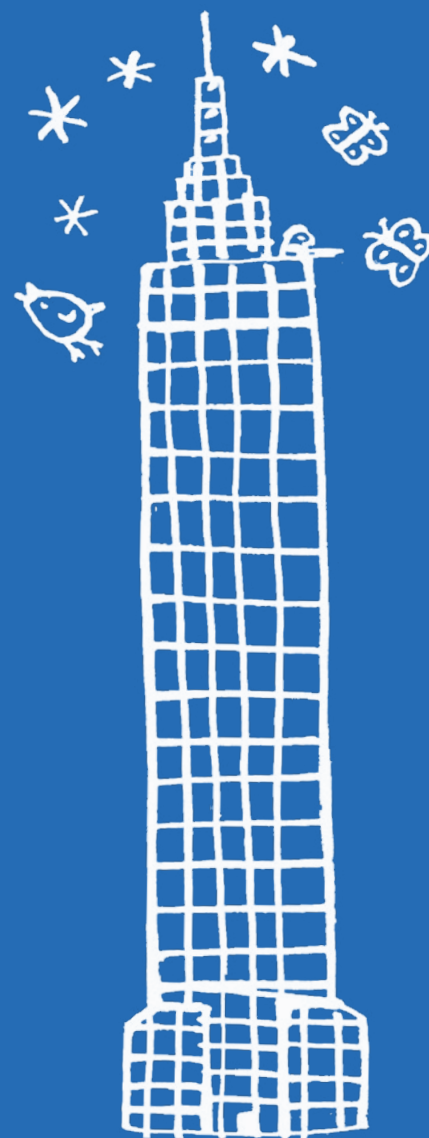


SIZE: W37 x H42 x D10cm

LEAD TIME: 6-8 weeks from approval

Printed one side, bottom gusset. Product comes 100% cotton as standard with a product barcode and Julia Gash swing ticket.

Extras: Customer specified barcode / Customer specific swing tag / Customer specific button badge





MINI NATURAL TOTE

SIZE: W21 x H21 x D12cm

SCREEN PRINTED: ZJGBAGN003B

PRINT MIN: 100

LEAD TIME: 6-8 weeks from approval

Printed one side, gusseted.

Product comes 100% cotton as standard with a product barcode and Julia Gash swing ticket.

Extras: Customer specified barcode
Customer specific swing tag
Customer specific button badge



MINI DENIM TOTE

SIZE: W21 x H21 x D12cm

SCREEN PRINTED: ZJGBAGD003B

PRINT MIN: 100

LEAD TIME: 6-8 weeks from approval

Printed one side, gusseted.

Product comes 100% cotton as standard with a product barcode and Julia Gash swing ticket.

Extras: Customer specified barcode
Customer specific swing tag
Customer specific button badge

LOWER
ORDER
QUANTITY



NATURAL ACCESSORY POUCH

SIZE: W28 x H18cm

SCREEN PRINTED: ZJGBAGN004

PRINT MIN: 100

LEAD TIME: 6-8 weeks from approval

Printed one side, gusseted.

Product comes 100% cotton as standard with a product barcode and Julia Gash swing ticket.

Extras: Customer specified barcode
Customer specific swing tag
Customer specific button badge

BEST SELLER



DENIM ACCESSORY POUCH

SIZE: W28 x H18cm

SCREEN PRINTED: ZJGBAGD004

PRINT MIN: 100

LEAD TIME: 6-8 weeks from approval

Printed one side, gusseted.

Product comes 100% cotton as standard with a product barcode and Julia Gash swing ticket.

Extras: Customer specified barcode
Customer specific swing tag
Customer specific button badge

LOWER
ORDER
QUANTITY

STATIONERY & SOUVENIRS

Brooches and badge sets that big up your town, magnets that marvel at iconic buildings, key rings as charming keepsakes and greeting cards that make cartography cool... Julia Gash and Parkwood Springs have created a range of cool and customisable souvenirs for globe trotters that need to travel light.

ALL PRODUCTS CAN BE
SENT WITHOUT BAG
PACKAGING UPON REQUEST

GREETING CARD

SIZE: 14.8 x 10.5cm - 300gsm



ZIJGCG004 PRINT MIN: 200
LEAD TIME: 6-8 weeks from approval
Supplied with white envelope and backing insert featuring printed barcode
Individually bagged.

SQUARE GREETING CARD

SIZE: 15 x 15cm / 300gsm



ZIJGCG002 PRINT MIN: 200
LEAD TIME: 6-8 weeks from approval
Supplied with red envelope and backing insert featuring printed barcode
Individually bagged.

BALL PEN

SIZE: W5 x H19 x D1cm (Packaged)



ZJGPEN018 PRINT MIN: 250
LEAD TIME: 6-8 weeks from approval
Cardboard sleeve with barcode printed on packaging.
Full colour print.

BAMBOO PEN

SIZE: W5 x H19 x D1cm (Packaged)



ZJGPEN019 PRINT MIN: 250
LEAD TIME: 6-8 weeks from approval
Cardboard sleeve with barcode printed on packaging.
Single colour print of customers choice.

BAMBOO PENS

SIZE: W7 x H19 x D1cm (Packaged)



ZJGPENPAC019 PRINT MIN: 84
LEAD TIME: 6-8 weeks from approval
Cardboard sleeve with barcode printed on packaging.
Single colour print of customers choice.

TIN PLATE MAGNET

SIZE: 7.8 x 5.4cm



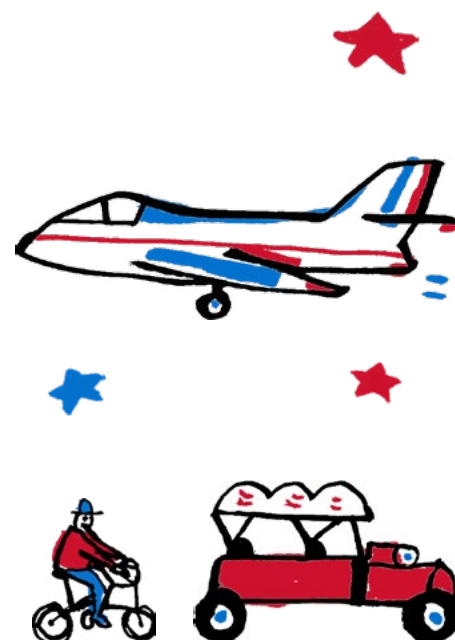
ZIJGMAG001 PRINT MIN: 100
LEAD TIME: 6-8 weeks from approval
Packaged size: 15 x 10.5cm
Packaging: Cardboard sleeve with barcode printed on reverse.

KEY RING (METAL)

SIZE: 4 x 2.8cm



ZIJGKEY003 PRINT MIN: 200
LEAD TIME: 6-8 weeks from approval
Packaged size: 11 x 5.5cm.
Printed one side only. Packaging: Cardboard hanger card with barcode printed on reverse.



SINGLE POSTCARDS

SIZE: 14.8 x 10.5cm / 300gsm



ZIJGPC001

PRINT MIN: 100

LEAD TIME: 6-8 weeks from approval

Supplied 4 colour front, black on reverse Bar-code printed on reverse
No packaging.

SINGLE WOODEN POSTCARD

SIZE: W15 x H10 x D0.3cm



ZIJGPC003

PRINT MIN: 100

LEAD TIME: 6-8 weeks from approval

Barcode printed on reverse
No packaging.

NOTEPAD

SIZE: 21 x 14.8cm. COVER: 300gsm



ZIJGSTA001

PRINT MIN: 100

LEAD TIME: 6-8 weeks from approval

Printed cover with 70pp, 70gsm blank sheets Bound with black wire
No packaging with barcode printed on reverse.



ART PRINT UNFRAMED

SIZE: 11 x 14in / 340gsm

ZIJGPOS001

PRINT MIN: 30

LEAD TIME: 6-8 weeks from approval

Bagged and packaged with backing card Bar-code label attached to bag.

ART PRINT FRAMED

SIZE: 39cm x 31cm / 340gsm

ZIJGPOSF001

PRINT MIN: 6

LEAD TIME: 6-8 weeks from approval

Frame: 39cm x 31cm, 3cm deep. Choose from White, Black or Natural Wood Effect Frame.



BACK COVER

COLOURING ACTIVITY PACK

SIZE: (21 x 29.7cm)



WITH PENCILS
WITHOUT PENCILS

PRINT MIN: 250

LEAD TIME: 6-8 weeks from approval

ZIJGCOLP
ZIJGCOL

Four pages of illustrations, puzzles and activities, created by Julia Gash in a neat, eco-friendly, cellophane pack with eurohanger. Four colour pencils are optional.

DESK PLANNER

SIZE: A3 (29.7 x 42cm), 100gsm, 52pp



ZIJGSTA002

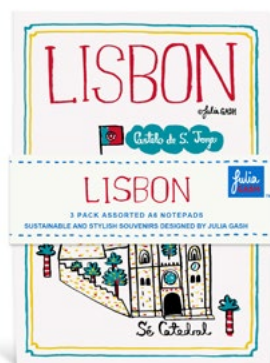
PRINT MIN: 200

LEAD TIME: 4 weeks from approval

52 sheets of sustainable matt paper printed with same design and glue bound along the long edge. Bagged with barcode on reverse.

3 PACK A5 NOTEPADS

SIZE: 21 x 14.8cm, COVER: 300gsm



ZIJGSTA006

PRINT MIN: 100

LEAD TIME: 6-8 weeks from approval

Cover: White with full colour print.

Inside: Lined paper.

Packaging: Belly band.

ZIJGSTA007

PRINT MIN: 100

LEAD TIME: 6-8 weeks from approval

Cover: Kraft with white print

Inside: Lined paper.

Packaging: Belly band.

A4 STICKER SHEET

SIZE: A4 (21 x 29.7cm)



ZIJGSTIC001

PRINT MIN: 100

LEAD TIME: 6-8 weeks from approval

Add an extra sheet by taking icons from your activity pack and adding a Sticker sheet.

Die cut peelable stickers

MAGNETIC MEMO PAD

SIZE: 21 x 10cm, 100gsm, 40pp



ZIJGSTA003

PRINT MIN: 100

LEAD TIME: 6-8 weeks from approval

40 sheets of sustainable matt paper printed with the same design and glue bound along short edge. Backed with grey board & two magnets. Belly band with barcode on reverse.

COMPACT MIRROR

SIZE: 7.5cm



ZIJGMIR001

PRINT MIN: 100

LEAD TIME: 6-8 weeks from approval

Packaged size: 13 x 8cm

Packaging: Cardboard sleeve with barcode printed on reverse.

BADGE SET

SIZE: 3.8cm



ZJGBAD001

PRINT MIN: 100

LEAD TIME: 6-8 weeks from approval

Packaged size: 15 x 10.5cm

Badge size: 3.8cm

Packaging: Backing card with barcode printed on reverse.

EMBROIDERED IRON-ON BADGE

SIZE: 6cm



OPTIONAL
BACKING
CARD



ZJGBADG

PRINT MIN: 250

LEAD TIME: 6-8 weeks from approval

Packaged size: 10.5 x 15cm

Badge size: 6cm

Packaging (optional): Backing card with barcode printed on reverse. Bagged

PENCIL TUBE

SIZE: 19 x 3.5cm



ZJGPENT001

PRINT MIN: 100

LEAD TIME: 6-8 weeks from approval

Set of 12 colouring pencils

Packaging: Cardboard tube with design on the outside.

A5 STICKER SET

SIZE: 14.8 x 21cm



ZJGSTIC002

PRINT MIN: 100

LEAD TIME: 6-8 weeks from approval

Packaging: Header card with barcode printed on reverse. Bagged.

BOOKMARK

SIZE: 18 x 5cm, 300gsm



ZJGBOO001

PRINT MIN: 100

LEAD TIME: 6-8 weeks from approval

Finishing: Blue ribbon with barcode printed on reverse.

WOODEN KEY RING

SIZE - CUSTOM CUT



ZJGKEY001

PRINT MIN: 250

LEAD TIME: 6-8 weeks from approval

Packaged size: 13 x 5cm

Size: Custom

Packaging: Hanger card with barcode printed on reverse.

WOODEN MAGNET

SIZE - CUSTOM CUT



ZJGMAG002

PRINT MIN: 250

WOODEN BROOCH

SIZE - CUSTOM CUT



ZJGBRO001

PRINT MIN: 250

PRINT MIN. 250 – CAN BE SPLIT BETWEEN WOODEN KEY RING, MAGNET, AND BROOCH

HOMEWARES

SIZE: 8.3 x 9.5cm. 10oz

SIZE: 8.3 x 9.5cm. 10oz

Parkwood Springs' Cityscape homewares celebrate your love for the world, whether it's your hometown or a far-flung destination. Printed on a tea towel, apron or mug, a Cityscape evokes memories of places that are close to your heart and brings them into your home.



LEAD TIME: 6-8 weeks from approval

PRINT MIN: 72

LEAD TIME: 6-8 weeks from approval

BEST SELLER

SIZE: 9.4 x 9.4cm

SIZE: 9.4 x 9.4cm



SIZE: 8 x 7.8cm

SIZE: 8 x 7.8cm



SIZE: 8.5 x 7.5cm

SIZE: 8.5 x 7.5cm



LEAD TIME: 6-8 weeks from approval

PRINT MIN: 100

LEAD TIME: 6-8 weeks from approval

Packaged size: 14.5 x 11cm

Cardboard sleeve with barcode printed on reverse.

LEAD TIME: 6-8 weeks from approval

PRINT MIN: 96

LEAD TIME: 6-8 weeks from approval

Printed full colour on outside only.

LEAD TIME: 6-8 weeks from approval

PRINT MIN: 72

LEAD TIME: 6-8 weeks from approval

Printed full colour on outside only, each mug is delivered individually packed in a plain white box with a colour label showing the mug design. The print on this mug will slightly vary from other mugs due to the bone china being more porous.

SIZE: A3 (29.7 x 42cm), 100gsm, 52pp

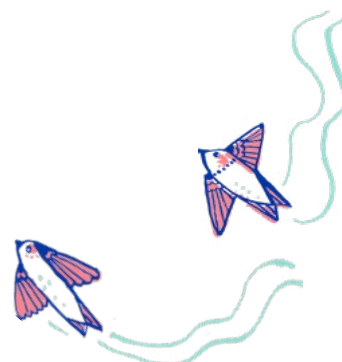
SIZE: A3 (29.7 x 42cm), 100gsm, 52pp



LEAD TIME: 6-8 weeks from approval

approval

52 sheets of sustainable matt paper printed with same design and glue bound along the long edge. Bagged with barcode on reverse.





TEA TOWEL

SIZE: 46 x 66cm

ZJG-TEAOW001

PRINT MIN: 100

LEAD TIME: 6-8 weeks from approval

5oz cotton. Packaged with belly band or header card. Barcode printed on reverse. Or loose, no barcode.

PACKAGING

There are two packaging options available:

- The belly band. Surrounds the carefully folded tea towel to keep it neat for display.
- The header card. With euro hook, this is perfect for on-wall display.



APRON

SIZE: 64 x 87cm

SCREEN PRINTED: ZJG-906800-10-APR-OPTWHI-PCT PRINT MIN: 50
LEAD TIME: 6-8 weeks from approval

EDGE TO EDGE (Pictured): ZJGAPRDN001
LEAD TIME: 6-8 weeks from approval

PRINT MIN: 100

100% natural cotton drill, 235gsm / 10oz Screen printed
Packaged with belly band, barcode printed on reverse
Or loose, no barcode.

T-SHIRTS



NATURAL

ZIJGTSN001

PRINT MIN: 100



WHITE

ZIJGTSW001

PRINT MIN: 100

LEAD TIME: 6-8 weeks from approval

Material: 100% semi-combed ringspun cotton.
Ribbed collar. Taped neck.

Tubular body. Twin needle stitching.

Weight: 190 gsm

Packaged with belly band and barcode printed on reverse or loose with a swing tag..

SIZES AVAILABLE: Small (S), Medium (M), Large (L), Extra Large (XL), Extra Extra Large (XXL)

Minimum order quantity of 10 in any size.



designed by

DASHER



Dasher is the diffusion brand of Julia Gash and has its own distinctive logo. Using a one colour outline and contrasting solid colour background, the design style is bold and the handwritten script of Cityscapes is absent. Icons featured are more leisure related and the brand and corresponding product lines are aimed at a younger market. The I HEART City theme in Julia's handwriting also forms part of the Dasher brand.

Dasher is also available on all of the products in the Julia Gash range except stripe handled bags.



COLOUR YOUR CITYSCAPE

Create your own colour scheme for your design or choose from our 20 preselected colour palettes...
Includes 3 colour print. Added cost for additional print on textile products only.

CLASSIC



- BLACK
- P186c
- P285c

MEDITERRANEAN



- BLACK
- P178c
- P3125c

CELTIC



- P280c
- P186c
- P354c

GALLIC



- P280c
- P186c
- P283c

BREEZE



- P2915c
- P177c
- P7692c

MOUNTAIN HIGH



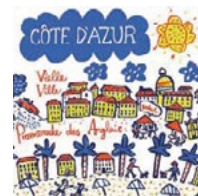
- P285c
- P177c
- P571c

COUNTRY



- BLACK
- P186c
- P285c
- P354c

RIVIERA



- P280c
- P166c
- P7455c
- P387c

AUSSIE



- P446c
- P285c
- P354c
- P136c

COOL AUSSIE



- P446c
- P283c
- P354c
- P136c

VINTAGE SEASIDE



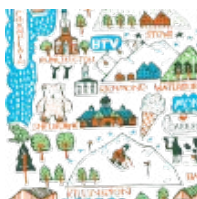
- P446c
- P3125c
- P032c
- P136c

ROMAN



- P446c
- P351c
- P3125c
- P149c

FOREST



- P306c
- P165c
- P359c
- P7736c

DISCOVERY



- P3955c
- P177c
- P571c
- P285c

TROPICAL



- BLACK
- P177c
- P3125c
- P354c

COASTAL



- P446c
- P177c
- P283c
- P354c

GRAYSON



- P3955c
- P177c
- P283c
- P7455c

PASTORAL



- P032c
- P351c
- P285c
- P155c

CABINCORE



- P3955c
- P177c
- P285c
- P354c

PRAIRIE



- P127c
- P032c
- P483c
- P563c

OR CHOOSE YOUR OWN COLOUR SCHEME!

OTHER DESIGNS...

Julia can create beautiful illustrations for any theme. Here are some examples of those designs on products we have created.

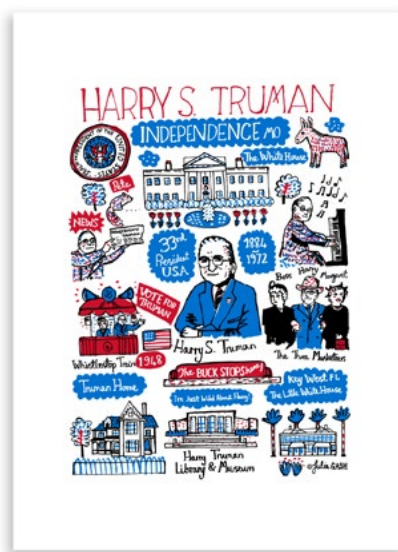
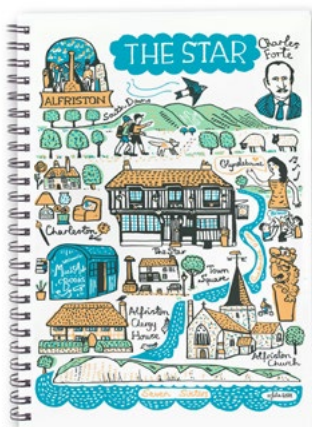


WILDLIFE!



MUSEUMS & HERITAGE!

UNIVERSITIES & SCHOOLS!



HOTELS & RESORTS

PORTRAITS!

FOOD!

WE OFFER GREAT POINT OF SALE SOLUTIONS FOR THE JULIA GASH RANGE IN YOUR STORE

We can help bring your new Julia Gash range to life with Foamex board graphics to enhance consumer engagement. Reinforce the brand with icons from the range or a particular message you want to communicate.

CHOOSE YOUR
FOAMEX ICONS!

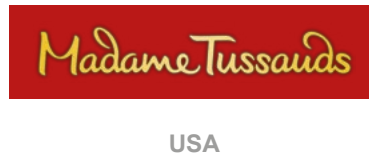


SHOW CARD!

Ask our sales team for more information at
sales@parkwood-springs.com
or call +44 (0) 114 698 0120

CURRENT STOCKISTS

Julia Gash's products are available at the following outlets



20  21

GIFT OF THE YEAR WINNER



**PARKWOOD
SPRINGS**

CONTACT US

Our team in the UK and Japan offer excellent customer service and ensure that your order arrives on time, keeping in touch with you with regular updates. Get in touch to talk through a Cityscape or Collection collaboration with our team around the world...

UK & EUROPE OFFICE

E: sales@parkwood-springs.com

T: +44 (0) 114 698 0120

JAPAN OFFICE

E: hello@see-saw.de

T: +49(0)30 5557 8068

Sales Agent: 龍野 菊江

Kikue Ryuno

Julia Gash supports a green and clean supply chain. Her products are made using sustainable materials in the UK or with trusted partners overseas. Julia Gash products bring green street cred to your store, which resonates with conscientious consumers worldwide.



@pws_ecomerc

www.parkwood-springs.com