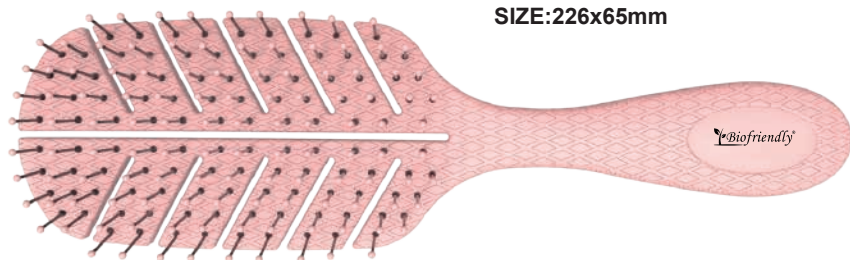
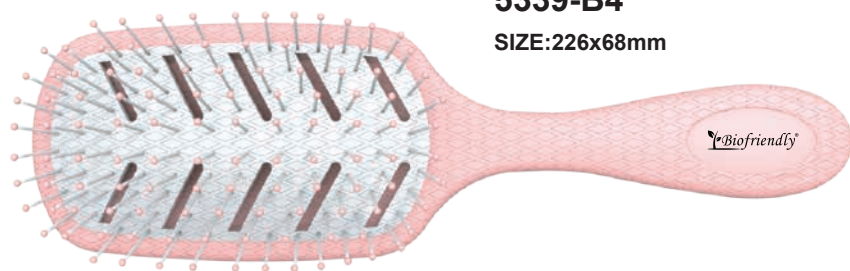




Corn starch material



5439-B4
SIZE:226x65mm



5339-B4
SIZE:226x68mm

5339-B4-4
SIZE:226x67mm

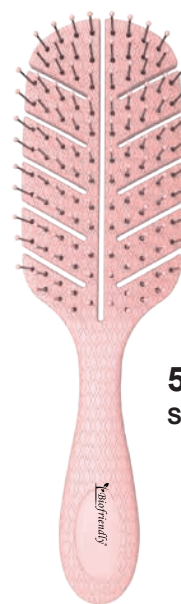


Aroma +
Coconut oil
Watermelon seed oil
Tea tree oil



Biodegradable

Mobile : +86-13906695046 Email: bio@biohairbrush.com

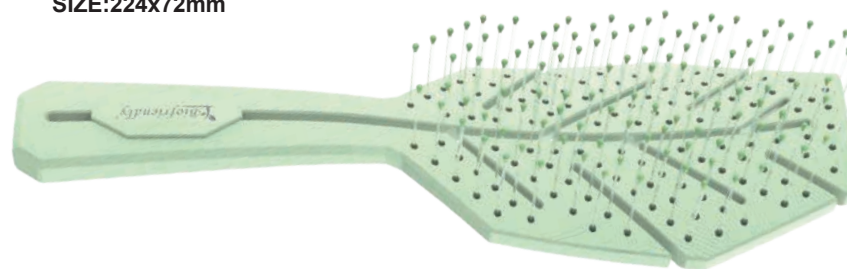


5438-B4
SIZE:202x55mm



5427-B4
SIZE:140x55mm

5449-B4
SIZE:224x72mm



Biodegradable

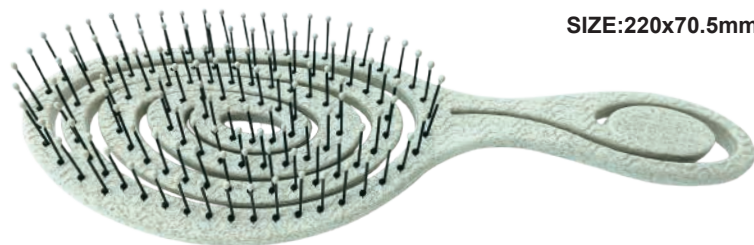
Mobile : +86-13906695046 Email: bio@biohairbrush.com



Wheat straw materials

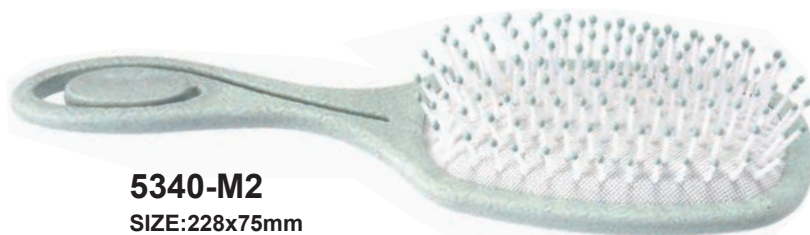
5440-M2

SIZE:220x70.5mm



5340-M2

SIZE:228x75mm



5329-M2

SIZE:228x75mm



5436-M2

SIZE:110x63x38mm



5435-M2

SIZE:120x60mm



(0471~0474)-M2

0471-M2(Φ25mm)

0472-M2(Φ34mm)

0473-M2(Φ44mm)

0474-M2(Φ53mm)

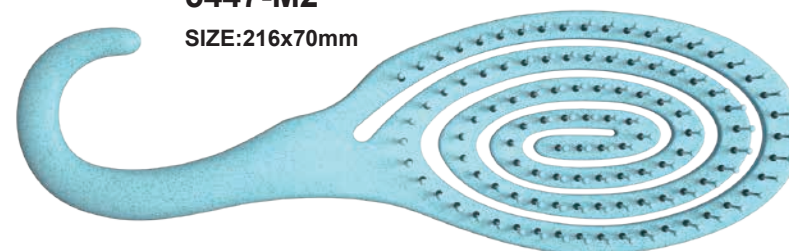


4754-M2

SIZE:220x50mm

5447-M2

SIZE:216x70mm



Bio-based

Mobile : +86-13906695046 Email: bio@biohairbrush.com

Bio-based

Mobile : +86-13906695046 Email: bio@biohairbrush.com



High temperature resistant straw material

(0481~0484)-M5



0481-M5(Φ25mm)

0482-M5(Φ34mm)

0483-M5(Φ44mm)

0484-M5(Φ53mm)

Bio-based

Mobile : +86-13906695046 Email: bio@biohairbrush.com



5481-M5

SIZE:250x70x45mm

Bio-based

Mobile : +86-13906695046 Email: bio@biohairbrush.com



Coconut husk

FOUR SIZES ARE AVAILABLE

SUITABLE FOR VARIOUS SHAPES



5448-M8

SIZE: 225x76mm

(0471~0474)-M8



0471-M8(Φ25mm)

0472-M8(Φ34mm)

0473-M8(Φ44mm)

0474-M8(Φ53mm)

Bio-based

Mobile : +86-13906695046 Email: bio@biohairbrush.com

Bio-based

Mobile : +86-13906695046 Email: bio@biohairbrush.com



Made from coconut husk
4754-M8



4787-M8 SIZE:225x63mm



4797-M8 SIZE:182x49mm



4798-M8 SIZE:230x27mm



Bio-based

Mobile : +86-13906695046 Email: bio@biohairbrush.com

4795-M8 SIZE:157x62mm



4793-M8 SIZE:400x21.5mm



4789-M8 SIZE:220x50mm



4791-M8 SIZE:150x64mm



Bio-based

Mobile : +86-13906695046 Email: bio@biohairbrush.com



Coffee brush
5322-M3

SIZE:98x66x41mm



TPEE Material

Excellent resistance to bending fatigue
Excellent instantaneous high temperature performance
Excellent impact resistance, especially at low temperature (-40C)
Good tear resistance and wear resistance



Anti-Knot Bristles

The three-layer design can provide appropriate space for hair. The height is 7, 9 and 14mm respectively. The design of high and low wool can provide appropriate space for the hair and will not pull the hair as easily as an ordinary brush.



7.0 mm
9.0 mm
14.0 mm



Coffee Material

This green environmental protection composite material is composed of 20% coffee powder raw materials, 50% recycled plastics and 30% other materials, with heat resistance and high hardness. The product is coffee bean, with novel and beautiful appearance and elegant coffee flavor.

Details of coffee hair brush

1

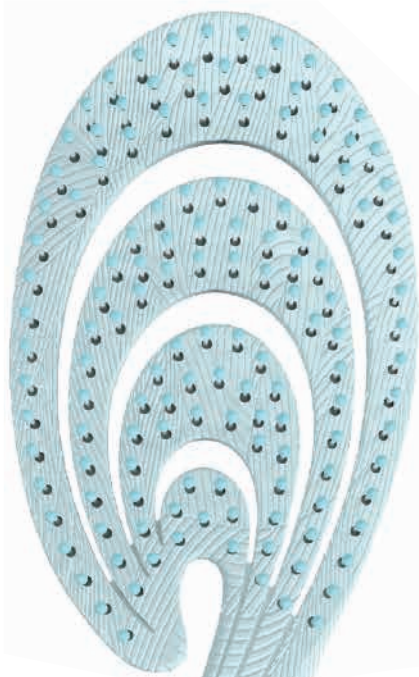


2



A small cabinet with an effective area of 28 square meters can hold 70000 pieces

Packaging volume saving
28 cubic meters can hold 100000 pieces
loading 43% more than normal

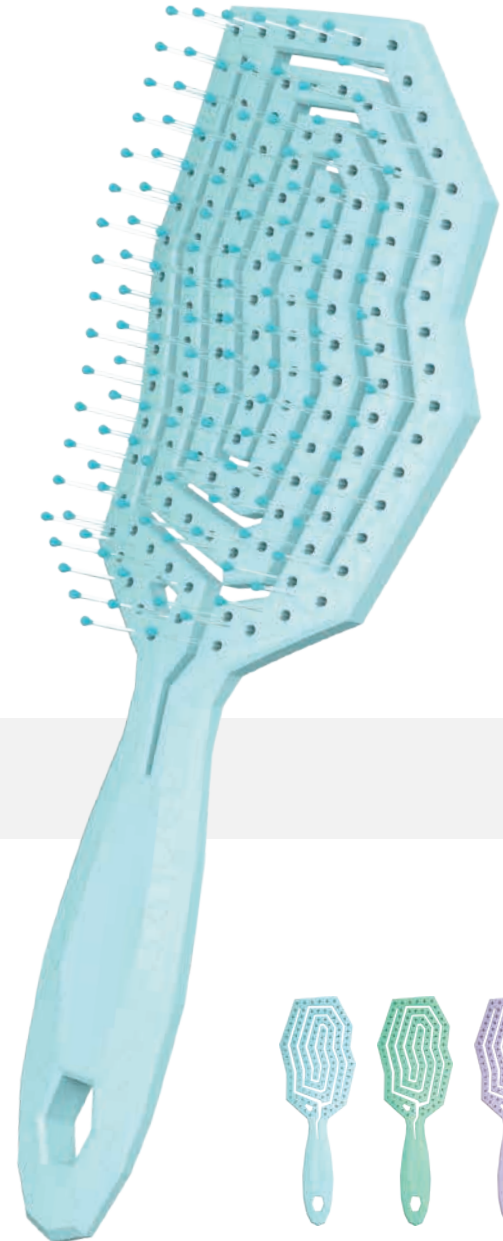


**New Sea
5450-G4**



GRS material

Mobile : +86-13906695046 Email: bio@biohairbrush.com



**Glacier brush
5457-H1**



OBP material

Mobile : +86-13906695046 Email: bio@biohairbrush.com

PRODUCT LIST

Item No	Material List		B4	G4	H1	M2	M3	M4	M8	M5
5440			✓	✓	✓	✓	✓	✓	✓	✓
5340			✓	✓	✓	✓	✓	✓	✓	✓
5339			✓	✓	✓	✓	✓	✓	✓	✓
5439			✓	✓	✓	✓	✓	✓	✓	✓
5438			✓	✓	✓	✓	✓	✓	✓	✓
5450				✓	✓	✓	✓	✓	✓	✓
5449			✓	✓	✓	✓	✓	✓	✓	✓
5448				✓	✓	✓	✓	✓	✓	✓
5457			✓	✓	✓	✓	✓	✓	✓	✓
5447			✓	✓	✓	✓	✓	✓	✓	✓
5481										✓
0481-0484										✓
0471-0474				✓	✓	✓	✓	✓	✓	✓

PRODUCT LIST

Item No	Material List		B4	G4	H1	M2	M3	M4	M8	M5
4754			✓	✓	✓	✓	✓	✓	✓	✓
4787			✓	✓	✓	✓	✓	✓	✓	✓
4789			✓	✓	✓	✓	✓	✓	✓	✓
4791				✓	✓	✓	✓	✓	✓	✓
4793				✓	✓	✓	✓	✓	✓	✓
4795				✓	✓	✓	✓	✓	✓	✓
4796			✓	✓	✓	✓	✓	✓	✓	✓
4797			✓	✓	✓	✓	✓	✓	✓	✓
5435			✓	✓	✓	✓	✓	✓	✓	✓
5436			✓	✓	✓	✓	✓	✓	✓	✓
5329				✓	✓	✓	✓	✓	✓	
5322				✓	✓	✓	✓	✓	✓	
5427			✓	✓	✓	✓	✓	✓	✓	✓