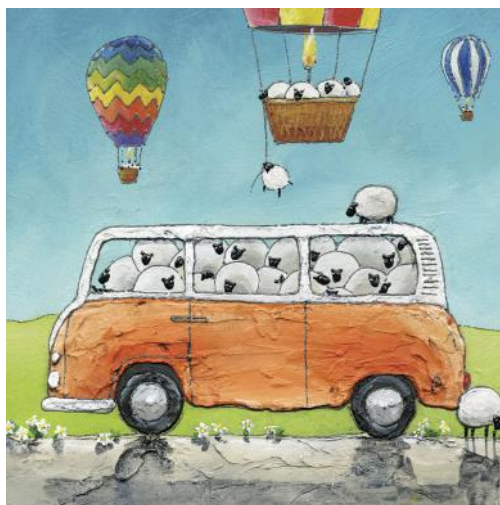


Greeting Cards



**A wide-ranging collection of simply beautiful greeting cards
reproducing the work of established and emerging artists
and photographers.**

TRADE CATALOGUE 2024



AT THE HEART OF THE GIFT AND HOME INDUSTRIES SINCE 1947

A Member of



To see our full collection visit

www.naturalpartnersart.co.uk



www.instagram.com/naturalpartnersart/

Find us on
Facebook

www.facebook.com/naturalpartnerlimited

Welcome to our 2024 Greeting Cards trade catalogue.

Natural Partners Limited is a family-run fine art publishing company based in Marske-by-Sea on the beautiful North Yorkshire coast. Since 2010 we have been working with a growing number of established and emerging artists and photographers, developing a reputation for producing high quality greeting cards and prints which faithfully reproduce original works. We are currently working with around 65 talented individuals and are continually looking to add to this number, refreshing our ranges throughout the year so that our customers can always find something new.

We are looking forward to having the chance to meet customers old and new and show them our latest and best-selling cards at the following trade shows:

21 - 24 July 2024, Home & Gift Buyers' Festival, Harrogate - Stand DP4-3
1 - 4 September 2024, Autumn Fair, NEC Birmingham - Stand 6B15

We hope that you will enjoy looking through this catalogue, which showcases the vast majority of our current ranges, and that you will find cards that will appeal to your customers. For details of how to order and other information about our services, please see the back cover. **You can also browse our full collection of more than 1,800 greeting cards, along with hundreds of fine art prints, by going to our website at www.naturalpartnersart.co.uk and registering as a trade visitor.** The site will also enable you to see much larger images of our products than can be displayed in this catalogue.

As part of our commitment to reducing our impact on the environment, all of our cards are printed in England on board accredited by the Forest Stewardship Council. During the course of this year we also hope to be able to switch to the use of biodegradable cellophane for wrapping our cards. **For those customers who prefer, we can also supply cards without any cellophane, simply with the envelope inserted in the card - just add a note when ordering to let us know.**

TABITHA MARY



Tabitha Mary creates beautiful images inspired by railway and travel posters from the 1930s. Working from her home office in Bedfordshire, around caring for a young family, Tabitha's artworks capture landmarks, seascapes and landscapes from near and far. Her style is clean, fresh and strives to show a location in its best light.



Coastline
150mm x 150mm
TM 01



River View
150mm x 150mm
TM 02



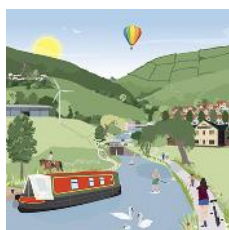
Boats on the Slipway
150mm x 150mm
TM 03



Coastal Town
150mm x 150mm
TM 04



Mount in the Bay
150mm x 150mm
TM 05



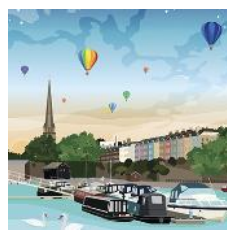
Busy Canal
150mm x 150mm
TM 06



Winter Funfair
150mm x 150mm
TM 07



River Festival
150mm x 150mm
TM 22



Balloon Festival
150mm x 150mm
TM 23



Tall Ship
150mm x 150mm
TM 24

All cards are blank inside and are individually cello wrapped with a white envelope.

Trade Price: £1.22 + VAT each (RRP £2.95)

TABITHA MARY



Escape to the Country
127mm x 177mm
TM 08



Mountain View
127mm x 177mm
TM 09



Lighthouse on the Headland
127mm x 177mm
TM 10



Lighthouse
127mm x 177mm
TM 11



Harbour
127mm x 177mm
TM 12



Beach Dunes
127mm x 177mm
TM 13



Red Train
127mm x 177mm
TM 14



The Cricket Club
127mm x 177mm
TM 15



Town Harbour
127mm x 177mm
TM 16



The Quay
127mm x 177mm
TM 17



Fishing Boat
127mm x 177mm
TM 18



Town Bridge
127mm x 177mm
TM 19



Seal Beach
127mm x 177mm
TM 20



Boat Race
177mm x 127mm
TM 21



Tranquil Cove
150mm x 150mm
TM 25



Smugglers' Cove
150mm x 150mm
TM 26



Towards the Highlands
150mm x 150mm
TM 27



Sand Bar
150mm x 150mm
TM 28



Sandy Bay
150mm x 150mm
TM 29



Riverside Town
150mm x 150mm
TM 30

All cards are blank inside and are individually cello wrapped with a white envelope.

Trade Price: £1.22 + VAT each (RRP £2.95)

LESLEY ANNE IVORY

Lesley Anne Ivory

Lesley Anne Ivory has been illustrating and painting all her life. She also loves cats and her work clearly reflects this. Having studied at St. Albans School of Art and then worked as an art teacher, her work has evolved over many years into a very recognisable genre and technique, where attention to detail is paramount. Lesley Anne is widely acclaimed as the most talented cat artist of her generation.



Three feline dignitaries
177mm x 127mm
LAI 11



Bobo and the daisy chain
177mm x 127mm
LAI 12



Twiglet under copper filbert
177mm x 127mm
LAI 13



Chesterton in the garden
177mm x 127mm
LAI 14



Muppet in the damson tree
177mm x 127mm
LAI 15



Motley and the small tortoiseshell
177mm x 127mm
LAI 16



Blossom and Spiro in sunflowers
177mm x 127mm
LAI 17



Amulet in the garden
177mm x 127mm
LAI 18



Gemma asleep on pink patchwork
177mm x 127mm
LAI 19



Malteaser in the snow
177mm x 127mm
LAI 20



Muppet on rose hexagons
177mm x 127mm
LAI 36



While Shepherds Watched - Octopussy and Motley
177mm x 127mm
LAI 38



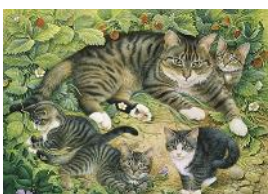
We Three Kings - Ra-Ra, Twiglet and Gabby
177mm x 127mm
LAI 40



Delabole and the peacock feather
177mm x 127mm
LAI 54



Octopussy in autumn leaves
177mm x 127mm
LAI 56



Gemma with her kittens
177mm x 127mm
LAI 58



Gabrielle with Grandfather's jar
177mm x 127mm
LAI 61



Muppet with Louise's angel
177mm x 127mm
LAI 64



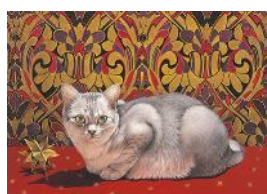
Truffle and Fudge with Christmas lights
177mm x 127mm
LAI 65



Muppet with her kittens in the snow
177mm x 127mm
LAI 66



Dandelion and Delabole
177mm x 127mm
LAI 67



Mumu on the Christmas tablecloth
177mm x 127mm
LAI 68



Teamwork in a neighbouring dustbin
177mm x 127mm
LAI 69



Gabrielle in daisies
177mm x 127mm
LAI 100



Agneatha and the Greek vase
177mm x 127mm
LAI 101

All cards are blank inside and are individually cello wrapped with a white envelope.

Trade Price: £1.22 + VAT each (RRP £2.95)



Agneatha and the Nouveau butterflies
127mm x 177mm
LAI 01



Phuan on a Chinese carpet
127mm x 177mm
LAI 02



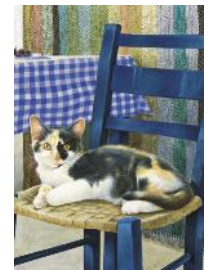
Dana's cats
127mm x 177mm
LAI 03



Advent with Agneatha
127mm x 177mm
LAI 04



Christie in early morning sunshine
127mm x 177mm
LAI 05



Mikado on a chair
127mm x 177mm
LAI 06



Mintaka with his mother Lucy
127mm x 177mm
LAI 07



Nutmeg and Mumu in Egyptian gardens
127mm x 177mm
LAI 08



Mintaka in papyrus thicket
127mm x 177mm
LAI 09



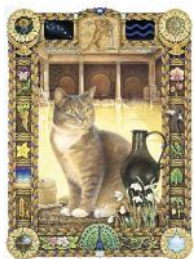
Amulet and the garden spider
127mm x 177mm
LAI 10



Octopussy, Mumu and Mintaka
127mm x 177mm
LAI 21



Mumu in Reflection
127mm x 177mm
LAI 23



Aquarius - Sappho
127mm x 177mm
LAI 24



Pisces - Angel
127mm x 177mm
LAI 25



Aries - Spiro and Blossom
127mm x 177mm
LAI 26



Taurus - Gemma
127mm x 177mm
LAI 27



Gemini - Christie and Zelly
127mm x 177mm
LAI 28



Cancer - Chesterton
127mm x 177mm
LAI 29



Leo - Octopussy and Motley
127mm x 177mm
LAI 30



Virgo - Gabrielle (Gabby)
127mm x 177mm
LAI 31



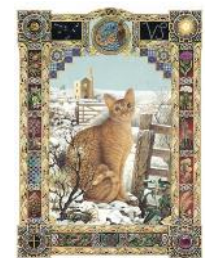
Libra - Clea and Lily
127mm x 177mm
LAI 32



Scorpio - Sirius
127mm x 177mm
LAI 33



Sagittarius - Ra-Ra
127mm x 177mm
LAI 34



Capricorn - Muggley
127mm x 177mm
LAI 35

All cards are blank inside and are individually cello wrapped with a white envelope.

Trade Price: £1.22 + VAT each (RRP £2.95)

More Lesley Anne Ivory overleaf.

LESLEY ANNE IVORY

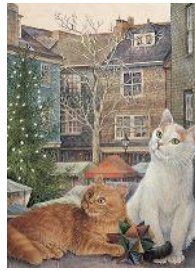
Lesley Anne Ivory



*Agneatha & Octopussy
watching the snow*
127mm x 177mm
LAI 41



*Gemma with
Norwegian hearts*
127mm x 177mm
LAI 42



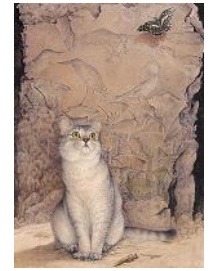
*Dandelion and
Snowdrop*
127mm x 177mm
LAI 44



*Gemma, Motley
and Octopussy*
127mm x 177mm
LAI 45



*Phuan and the
Chinese rice bowl*
127mm x 177mm
LAI 46



*Amulet and the
Egyptian butterfly*
127mm x 177mm
LAI 47



*Motley in wild
daffodils*
127mm x 177mm
LAI 48



*Octopussy in
spring flowers*
127mm x 177mm
LAI 49



*Spiro amongst
primulas*
127mm x 177mm
LAI 50



*Gabrielle and the
Nouveau poster*
127mm x 177mm
LAI 52



*Twiglet and the Art
Nouveau poster*
127mm x 177mm
LAI 53



*Agneatha in
cowslips*
127mm x 177mm
LAI 55



*Blue in the
museum*
127mm x 177mm
LAI 59



*Lucy Locket on the
wheelback chair*
127mm x 177mm
LAI 60



Starlight at home
127mm x 177mm
LAI 70



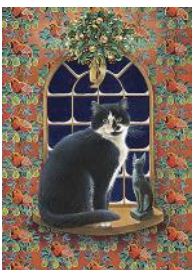
*Gemma under the
mistletoe*
127mm x 177mm
LAI 71



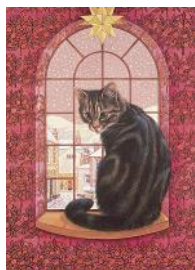
*Agneatha with the
apple*
127mm x 177mm
LAI 72



*Christmas window
with Tam & Agneatha*
127mm x 177mm
LAI 73



*Socks with partridge
in pear tree*
127mm x 177mm
LAI 74



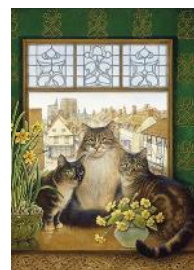
*Octopussy and the
Christmas star*
127mm x 177mm
LAI 75



*Mau-Mau and the
Christmas card*
127mm x 177mm
LAI 76



*Bengy in a
basket*
127mm x 177mm
LAI 97



*Agneatha, Motley
and Octopussy*
127mm x 177mm
LAI 98



*Ruskin on the
stairs*
127mm x 177mm
LAI 99

All cards are blank inside and are individually cello wrapped with a white envelope.

Trade Price: £1.22 + VAT each (RRP £2.95)

LESLEY ANNE IVORY

Lesley Anne Ivory



*Christie looking for
Father Christmas*
127mm x 177mm
LAI 77



*Octopussy
searching*
127mm x 177mm
LAI 85



*Gemma with the
pink sugar mouse*
127mm x 177mm
LAI 91



*Agneatha under
the holly*
127mm x 177mm
LAI 92



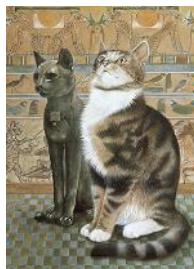
*Octopussy with his
Christmas decoration*
127mm x 177mm
LAI 93



*Harry and the
decorations*
127mm x 177mm
LAI 94



*Spiro and the
Egyptian ducks*
127mm x 177mm
LAI 95



*Twiglet with
Egyptian cats*
127mm x 177mm
LAI 96



*Gabrielle on
Egyptian chair*
127mm x 177mm
LAI 116



*Mintaka and Lucy
in St. Albans*
127mm x 177mm
LAI 117



*Ruskin against
satin broche*
127mm x 177mm
LAI 118



*Agneatha with her
Christmas decoration*
127mm x 177mm
LAI 119



*Agneatha and her
kittens on the doorstep*
177mm x 127mm
LAI 102



*Christie, Posky and
Zelly*
177mm x 127mm
LAI 103



*Posky in the
soft toys*
177mm x 127mm
LAI 104



*Agneatha on rose
hexagons*
177mm x 127mm
LAI 105



*Ruskin with
strings*
177mm x 127mm
LAI 106



*Sheena on block
patchwork*
150mm x 150mm
LAI 78



Puff on Batik birds
150mm x 150mm
LAI 79



*Razzle on Peruvian
duck carpet*
150mm x 150mm
LAI 80



*Blossomire,
"The Princess"*
150mm x 150mm
LAI 81



*Simba on cathedral
patchwork*
150mm x 150mm
LAI 82



*Mumu, Mintaka
and the snow cat*
150mm x 150mm
LAI 107

All cards are blank inside and are individually cello wrapped with a white envelope.

Trade Price: £1.22 + VAT each (RRP £2.95)

More Lesley Anne Ivory overleaf.

LESLEY ANNE IVORY

Lesley Anne Ivory



Gemma in the apple tree
177mm x 127mm
LAI 108



Zelly the thinker
177mm x 127mm
LAI 109



Mother and kittens in Hibiscus
177mm x 127mm
LAI 110



Hannibal, Morse and Sage
177mm x 127mm
LAI 111



Harry on batik material
177mm x 127mm
LAI 112



Angel at Christmas
177mm x 127mm
LAI 113



L'apres-midi d'une Mumu
177mm x 127mm
LAI 114



Spiro on patchwork squares
177mm x 127mm
LAI 115



All the cats in the garden
210mm x 99mm
LAI 120



Chesterton, Twiglet and Gemma on rooftops
210mm x 99mm
LAI 121



Harry, Agneatha and Sheena
210mm x 99mm
LAI 122



Angel, Blossom and Dandelion
210mm x 99mm
LAI 123



Line-up of cats
210mm x 99mm
LAI 124



Amulet and the Stag Beetle
210mm x 99mm
LAI 125

SUE FORD

Sue Ford

Sue is an experienced artist and well-established art tutor, Based in Saltburn, on the beautiful North Yorkshire coast. She has experimented with just about every possible medium in her development as an artist and is equally at home with watercolour, pastel or mixed media. As a qualified further education Tutor, Sue teaches weekly adult classes and weekend workshops and leads painting holidays in the UK and abroad. She has exhibited with the Marine Society and the Society of Women Artists at The Mall Galleries in London and has had several articles published in art magazines.



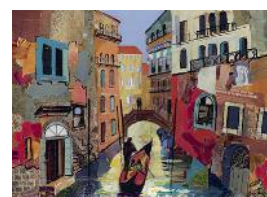
Behind the Sea Wall
177mm x 127mm
SF 01



Flowing Out To Sea
177mm x 127mm
SF 08



Wonderful Time ...
177mm x 127mm
SF 09



Venice Canal
177mm x 127mm
SF 10



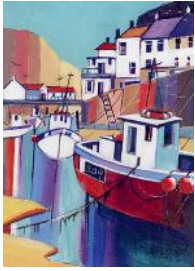
Harbour
177mm x 127mm
SF 12

All cards are blank inside and are individually cello wrapped with a white envelope.

Trade Price: £1.22 + VAT each (RRP £2.95)

SUE FORD

Sue Ford



Boats
127mm x 177mm
SF 02



Quayside
127mm x 177mm
SF 05



Bobbing Boats
127mm x 177mm
SF 06



Fishing Boats
127mm x 177mm
SF 07



The Grand Tour
150mm x 150mm
SF 03



Castle
150mm x 150mm
SF 04

WENDY BROWN

W. Brown

Wendy grew up in London and as a child was always encouraged to develop a love of the natural world and to paint and draw as much as she could. She is a self-taught watercolour artist with a detailed and illustrative style developed through her love of illustrations from the Golden Age of Children's Literature. She designs her work to be light-hearted, colourful and innocent, with a bit of old fashioned charm.



Bobby's Balloon
127mm x 177mm
WB 03



Daisy
127mm x 177mm
WB 04



Baking with Rosie
127mm x 177mm
WB 05



One Summer Evening
127mm x 177mm
WB 06



Easter Egg for Patch
150mm x 150mm
WB 09



Splash and Splosh
150mm x 150mm
WB 10



Albert's Vegetable Patch
177mm x 127mm
WB 01



Bedtime Stories
177mm x 127mm
WB 02



A Busy Kitchen
177mm x 127mm
WB 07



The Sweet Shop
177mm x 127mm
WB 08



The Happy Couple
150mm x 150mm
WB 11



The Sleepover
177mm x 127mm
WB 12



Bedtime
177mm x 127mm
WB 13



Off Camping
210mm x 99mm
WB 14



Rosie's Picnic
210mm x 99mm
WB 15

All cards are blank inside and are individually cello wrapped with a white envelope.

Trade Price: £1.22 + VAT each (RRP £2.95)

ANDY BRODERICK

Andy Broderick

Originally from Kilkenny in the Republic of Ireland, Andy studied Fine Art at Teesside University and now lives and works in Saltburn on the North Yorkshire coast. His practice as an artist is based on the use of natural or alternative materials, including earth, tea and pulped leaves, to convey aspects of the spirit of the subject. Influenced in part by Japanese Zen painting, his work uses plants and animals as a point of focus on the natural world and through its simplicity and purity creates an almost meditative connection with the subject.



Head of a Hare
127mm x 177mm
AB 01



Head of a Fox
127mm x 177mm
AB 04



Hare
127mm x 177mm
AB 05



Vixen
127mm x 177mm
AB 15



Boxing Hares
127mm x 177mm
AB 17



Head of a Buck
127mm x 177mm
AB 18



The King of All Birds
127mm x 177mm
AB 20



Head of a Doe
127mm x 177mm
AB 22



Peacock
127mm x 177mm
AB 26



Curlew II
127mm x 177mm
AB 32



Weasel
127mm x 177mm
AB 33



Rabbit with Foxglove
127mm x 177mm
AB 34



Hare and Nettles
177mm x 127mm
AB 06



Corvids
177mm x 127mm
AB 14



Head of a Hare III
177mm x 127mm
AB 16



Mr Handsome
177mm x 127mm
AB 19



Jay
177mm x 127mm
AB 21



Badger
177mm x 127mm
AB 23



Vulpine
177mm x 127mm
AB 24



Mountain Hare
177mm x 127mm
AB 25



Boxing Hares II
177mm x 127mm
AB 27



Running Hare
177mm x 127mm
AB 28

All cards are blank inside and are individually cello wrapped with a kraft envelope.

Trade Price: £1.22 + VAT each (RRP £2.95)



Head of a Stag
177mm x 127mm
AB 29



Sheep
177mm x 127mm
AB 30



Curlew
177mm x 127mm
AB 31



Badger II
177mm x 127mm
AB 37



Kingfisher
177mm x 127mm
AB 38



Spring Lamb
177mm x 127mm
AB 40



Swaledale Head
177mm x 127mm
AB 41



Winter Red Squirrel
177mm x 127mm
AB 42



Head of a Cow
177mm x 127mm
AB 44



Grannie's Hens
177mm x 127mm
AB 45



Head of a Timber Wolf
177mm x 127mm
AB 46



Hares with Poppies
177mm x 127mm
AB 58



Raven
177mm x 127mm
AB 72



Fox
177mm x 127mm
AB 74



Gannets
177mm x 127mm
AB 75



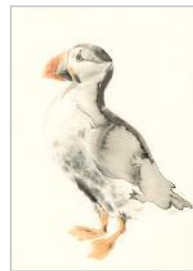
Chaffinch
127mm x 177mm
AB 35



Pheasant
127mm x 177mm
AB 36



Irish Wolfhound
127mm x 177mm
AB 47



Puffin
127mm x 177mm
AB 57



Irises
127mm x 177mm
AB 50



Daffodils
127mm x 177mm
AB 51



Lilies
127mm x 177mm
AB 52



Poppies
127mm x 177mm
AB 53



Foxgloves
127mm x 177mm
AB 54



Diving Kingfisher
127mm x 177mm
AB 77



Wood Mouse
127mm x 177mm
AB 78



Brown Hare in Motion
127mm x 177mm
AB 80

All cards are blank inside and are individually cello wrapped with a kraft envelope.

Trade Price: £1.22 + VAT each (RRP £2.95)

PETER M. HICKS



Peter Hicks was born in Osgodby in East Yorkshire, but has lived and worked for most of his life on the glorious moors close to the North Yorkshire coast. After studying art at Middlesbrough and Leeds, and inspired by the drama and immensity of the British landscape, especially his beloved moors, Peter has developed into one of northern England's leading landscape artists.



Danby Rigg, Winter
210mm x 99mm
PMH 01



Autumn Hills
210mm x 99mm
PMH 05



Receding Snow, Winter
210mm x 99mm
PMH 06



Scarborough, Sea Fret
210mm x 99mm
PMH 07



Lulworth Cove, Early Evening
210mm x 99mm
PMH 17



Looking towards Fryup
210mm x 99mm
PMH 19



Gordale Scar
127mm x 177mm
PMH 32



Spring, Hutton Mulgrave
210mm x 99mm
PMH 21



Across the Bay
210mm x 99mm
PMH 26



Distant Headland
210mm x 99mm
PMH 27



Swing Bridge
210mm x 99mm
PMH 28



My Garden in Winter
177mm x 127mm
PMH 09



My Garden, Summer
177mm x 127mm
PMH 10



View from the Woods
177mm x 127mm
PMH 12



Boxing Day, Airton
177mm x 127mm
PMH 22



Over my Garden Gate
177mm x 127mm
PMH 23



Road through Woods
177mm x 127mm
PMH 24



Light on the Sea
177mm x 127mm
PMH 25



Moorland Garden
177mm x 127mm
PMH 30



Setting Sun
177mm x 127mm
PMH 33



Gordale Scar II
177mm x 127mm
PMH 41

All cards are blank inside and are individually cello wrapped with a white envelope.

Trade Price: £1.22 + VAT each (RRP £2.95)

PETER M. HICKS

Peter M. Hicks



Across the Dale
177mm x 127mm
PMH 42



High Winter Hills
177mm x 127mm
PMH 43



Mist in the Valley
177mm x 127mm
PMH 44



Sunlight
177mm x 127mm
PMH 45



Open Moorland
177mm x 127mm
PMH 46



Sunlight and Mist
210mm x 99mm
PMH 29



Moorland Garden II
210mm x 99mm
PMH 31



Tarn
210mm x 99mm
PMH 36



Tarn II
210mm x 99mm
PMH 37



Head of the Dale
210mm x 99mm
PMH 38



Garden by the Sea
210mm x 99mm
PMH 39



Garden in the Landscape
210mm x 99mm
PMH 40



Landscape and Garden
210mm x 99mm
PMH 47



Figure Sculpture
127mm x 177mm
PMH 52



Foxgloves
127mm x 177mm
PMH 53



John & Maddy's Garden
127mm x 177mm
PMH 55



Flowers by Wall
127mm x 177mm
PMH 59



Garden & Stone Figure
127mm x 177mm
PMH 60



My View
127mm x 177mm
PMH 61



My Garden Gate
177mm x 127mm
PMH 56



Inside and Outside
177mm x 127mm
PMH 57



Summer, John and Maddy's...
177mm x 127mm
PMH 58



Garden & Distant Views
177mm x 127mm
PMH 62



Looking Towards My Gate
177mm x 127mm
PMH 63

All cards are blank inside and are individually cello wrapped with a white envelope.

Trade Price: £1.22 + VAT each (RRP £2.95)

More Peter M Hicks overleaf.



Mist - Esk Valley
210mm x 99mm
PMH 48



Estuary
210mm x 99mm
PMH 49



Blakey
210mm x 99mm
PMH 50



Light into Dark
210mm x 99mm
PMH 51



Path through Doctor's Wood
210mm x 99mm
PMH 70



Memories of Childhood
210mm x 99mm
PMH 79



Lakes, Hills and Flowers
210mm x 99mm
PMH 80



Flowers, Tarn and High Hills
210mm x 99mm
PMH 81



Light in the Lane
177mm x 127mm
PMH 64



Light in Woodland
177mm x 127mm
PMH 65



Shadowed Lane
177mm x 127mm
PMH 66



Spring
177mm x 127mm
PMH 67



Woodland image
177mm x 127mm
PMH 68



Woodland Spring
177mm x 127mm
PMH 69



Shadowed Lane II
177mm x 127mm
PMH 71



The Tunnel
177mm x 127mm
PMH 73



By the Gate II
177mm x 127mm
PMH 74



Flowers against the Hills
177mm x 127mm
PMH 75



Flowers by the Tarn
177mm x 127mm
PMH 76



Flowers from the Garden
177mm x 127mm
PMH 77



In front of the Tarn
177mm x 127mm
PMH 78



Flowers and Mountains
150mm x 150mm
PMH 72



By the Gate
127mm x 177mm
PMH 82

All cards are blank inside and are individually cello wrapped with a white envelope.

Trade Price: £1.22 + VAT each (RRP £2.95)



Doctor's Wood
177mm x 127mm
PMH 85



Fountains Landscape
177mm x 127mm
PMH 88



Entrance to a Wood
177mm x 127mm
PMH 89



High Hills and Tarn
177mm x 127mm
PMH 90



Tarn
177mm x 127mm
PMH 91



Tarn and Flowers
177mm x 127mm
PMH 92



Studley Royal Trees and Lakes
177mm x 127mm
PMH 93



Studley Royal Reflections
177mm x 127mm
PMH 94



Woods at Studley Royal
177mm x 127mm
PMH 95



Light in the Woods at Fountains
177mm x 127mm
PMH 96



Fountains Abbey
177mm x 127mm
PMH 97



Lesley and Beverley in Woodland
177mm x 127mm
PMH 101



Rosedale Landscape
210mm x 99mm
PMH 83



Landscape by the Esk
210mm x 99mm
PMH 84



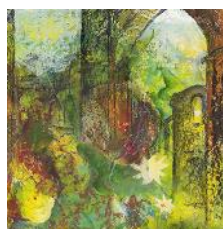
Parkland
210mm x 99mm
PMH 98



Reflections of the Sky
210mm x 99mm
PMH 99



Flowers and Hills
150mm x 150mm
PMH 86



Fountains Fragment
150mm x 150mm
PMH 87



Woodland and Water
150mm x 150mm
PMH 100

All cards are blank inside and are individually cello wrapped with a white envelope.

Trade Price: £1.22 + VAT each (RRP £2.95)

SUE MORTON

Sue Morton

Sue originally trained in the Arts, but then pursued a career working in and with historic buildings. She has now returned to her family roots in Whitby, on the North Yorkshire coast, and paints full-time, portraying the area's beautiful countryside, traditional buildings and ever-changing coastal scenes.



Beached
177mm x 127mm
SM 01



Pure Light Bright Water
177mm x 127mm
SM 02



Autumn Reflection
177mm x 127mm
SM 10



Dappled Light
177mm x 127mm
SM 13



Final Mooring
177mm x 127mm
SM 14



Light on the Beck
127mm x 177mm
SM 04



Lodge Farm Gate
127mm x 177mm
SM 07



Into the Light
127mm x 177mm
SM 08



Woodland Path
127mm x 177mm
SM 11



Turning Tide
127mm x 177mm
SM 15



Winter Walk
127mm x 177mm
SM 16



Tranquil Autumn
177mm x 127mm
SM 17



Winter Dawn
177mm x 127mm
SM 18



A Land For All Seasons
177mm x 127mm
SM 21



Through the Gate
177mm x 127mm
SM 22



Wander in the Woods
177mm x 127mm
SM 23



Finished Work!
127mm x 177mm
SM 19



By a Sleepy Lagoon
127mm x 177mm
SM 20



Winter Solstice
127mm x 177mm
SM 24



Autumn, Old Mill
127mm x 177mm
SM 25



The Secret Garden
127mm x 177mm
SM 26



Cool Water
127mm x 177mm
SM 27



Breath of Summer
127mm x 177mm
SM 28

All cards are blank inside and are individually cello wrapped with a white envelope.

Trade Price: £1.22 + VAT each (RRP £2.95)

WILL TAYLOR

Born in North East England, where he spent most of his life, Will, who died in 1998, was known especially for his linocuts, produced on a Victorian press in the studio at his home on the North York Moors. Many of his pictures reflect the moors, coastline and contrasting landscape of the industry in his local area, but Will also found inspiration in the varied landscapes right across the North of England and Scotland. It has been said that his work has a quietness about it: a gentleness which grew out of his love for his part of the world.



Tranquil Moorings
177mm x 127mm
WT 01



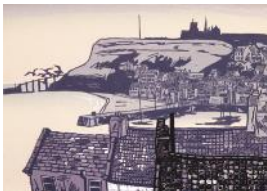
Boats
177mm x 127mm
WT 02



Upturned Boats
177mm x 127mm
WT 03



Harbour Moonlight
177mm x 127mm
WT 04



Rooftops around the Harbour
177mm x 127mm
WT 05



Light on the Bay
177mm x 127mm
WT 06



Misty Hills
177mm x 127mm
WT 07



New Horizons
177mm x 127mm
WT 08



Setting Sun
177mm x 127mm
WT 09



Moorland Cross
177mm x 127mm
WT 10



Morning Mist
177mm x 127mm
WT 11



Winter Pond
177mm x 127mm
WT 12



The Minster
177mm x 127mm
WT 13



Evening Glow
177mm x 127mm
WT 14



Upturned Boats II
177mm x 127mm
WT 15



Lake
177mm x 127mm
WT 16



End of the Day
177mm x 127mm
WT 17



Moon over Lindisfarne
177mm x 127mm
WT 18



Coastal Ruins
177mm x 127mm
WT 19



Snow on the Moors
177mm x 127mm
WT 20

All cards are blank inside and are individually cello wrapped with a white envelope.

Trade Price: £1.22 + VAT each (RRP £2.95)

JAN RICHARDSON

J. Richardson

Born in Lincolnshire in 1964, Jan currently lives and works in the Yorkshire Dales. She studied fine art and illustration at Grimsby and at Harrow School of Art. Her joyful, naive portrayal of the world around her in her early work was inspired by happy days and holidays. The mood enhancing nature of these paintings found favour worldwide. After moving to the Yorkshire Dales Jan began to feel the need to change her style of working. She is an almost compulsive drawer of her surroundings and her new paintings have evolved from this need to draw, taking inspiration from places with which she has a close personal involvement.



All Aboard
150mm x 150mm
JR 01



Blue Day
150mm x 150mm
JR 02



Tide and Tiles
150mm x 150mm
JR 03



The Grand
150mm x 150mm
JR 04



View Towards the Bridge
150mm x 150mm
JR 05



Over Rooftops to Minster
150mm x 150mm
JR 06



Waiting for the Call
150mm x 150mm
JR 07



Counting the Steps
150mm x 150mm
JR 08



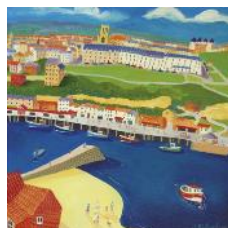
Flower Patio
150mm x 150mm
JR 19



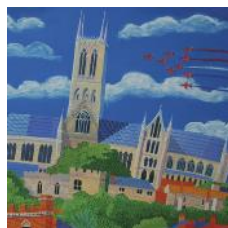
Down to the Harbour
150mm x 150mm
JR 20



The Return
150mm x 150mm
JR 21



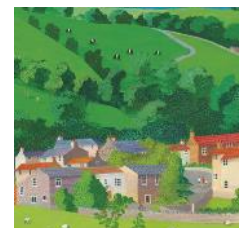
Across the Harbour
150mm x 150mm
JR 22



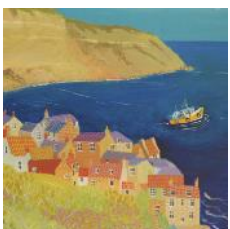
Flypast
150mm x 150mm
JR 23



Busy Harbour
150mm x 150mm
JR 24



Village, Belted Galloways
150mm x 150mm
JR 25



Going Fishing
150mm x 150mm
JR 26



Under Simon's Seat
127mm x 177mm
JR 14



Summer in Orchard Lane
127mm x 177mm
JR 15



Late January
127mm x 177mm
JR 16



Winding Road
127mm x 177mm
JR 17

All cards are blank inside and are individually cello wrapped with a white envelope.

Trade Price: £1.22 + VAT each (RRP £2.95)

JAN RICHARDSON

J. Richardson



Greenhow
177mm x 127mm
JR 10



June in Sandsend
177mm x 127mm
JR 11



Nearing Grassington
177mm x 127mm
JR 12



Rain in Lythe
177mm x 127mm
JR 13



Evening Light, Runswick
177mm x 127mm
JR 18

PETER SARGINSON

Peter Sarginson

Peter was born in Marske-by-Sea on the North Yorkshire coast and studied at Middlesbrough College of Art and the Bath Academy of Art. He went on to become Art Advisor to the West Riding of Yorkshire authority and then spent many years as Principal of the prestigious West Dean College in Sussex. After retiring and moving back to North Yorkshire he resumed painting, concentrating on the patterns created by the ever changing seashore and producing beautiful works that have received wide acclaim. Peter died in 2017 after a brave battle with illness.



High Tide, Saltburn
127mm x 177mm
PS 01



Sea Coal Beach Patterns
127mm x 177mm
PS 02



On the Beach
127mm x 177mm
PS 03



Sea View
127mm x 177mm
PS 05



Early Morning Beach
127mm x 177mm
PS 13



Towards the Pier
177mm x 127mm
PS 10



Sun, Sea and Sand
177mm x 127mm
PS 11



Sand Dune Beach
177mm x 127mm
PS 12



Early Morning Beach II
177mm x 127mm
PS 14



Winter Landscape
177mm x 127mm
PS 15



The Arno
177mm x 127mm
PS 16



Path Across the Dunes
177mm x 127mm
PS 18



Ripples in the Sand
177mm x 127mm
PS 19

All cards are blank inside and are individually cello wrapped with a white envelope.

Trade Price: £1.22 + VAT each (RRP £2.95)

EMMA WHITELOCK



Yorkshire-born Emma's paintings explore the emotional connection to land and sea in a semi-abstract style. Using acrylic with mixed media she builds layers to create evocative work which aims to capture a redolent moment, often poised on the edge of day or night when the mood is especially poignant. Exhibiting widely, she has work in collections in London and New York and was a prize winner in the North York Moors National Park inaugural Art Awards.



Blush Meridian
150mm x 150mm
EW 01



Fragile Flame
150mm x 150mm
EW 02



Herald the Night
150mm x 150mm
EW 03



Let's Get Lost
150mm x 150mm
EW 04



The South Wind Calls
150mm x 150mm
EW 05



Toward Hope
150mm x 150mm
EW 06



Velveteen Dusk
150mm x 150mm
EW 08



Where Truths Shine
150mm x 150mm
EW 09



Spellbound
150mm x 150mm
EW 11



A Rose-Golden Time
150mm x 150mm
EW 12



Walking in my Sleep
150mm x 150mm
EW 13



Sequestered Shore
150mm x 150mm
EW 14



Becoming Night
210mm x 99mm
EW 15



Epic Tide
210mm x 99mm
EW 16



Oceans of Time
210mm x 99mm
EW 17

ROB KEEP



Rob's family moved to Grassington in the Yorkshire Dales from Oxford while he was still a young child and he has lived in the area ever since. Having studied at Harrogate College of Art, he now mixes painting with running a successful picture framing business. His paintings are inspired by different aspects of the Dales countryside all around him, from glorious wildflower meadows to windswept trees on the high limestone pavement.



Dandelions and grasses
127mm x 177mm
RK 02



Poppy Field
127mm x 177mm
RK 09



Deep in the Meadow
127mm x 177mm
RK 10



Dandelion Clocks
177mm x 127mm
RK 01



Summer Meadow
177mm x 127mm
RK 03

All cards are blank inside and are individually cello wrapped with a white envelope.
Trade Price: £1.22 + VAT each (RRP £2.95)



Buttercups and Daisies
177mm x 127mm
RK 04



Meadow
177mm x 127mm
RK 05



Poppies
177mm x 127mm
RK 08



Ancient Oak
177mm x 127mm
RK 11

KAREN RISBY

Karen Risby

Karen creates contemporary ceramic sculpture, wall hangings and porcelain accessories. She takes inspiration from nature, myth and storytelling. Birds are a prominent feature of her work, interweaved with landscapes, people and places. Originally from London, Karen graduated from Camberwell College of Art in 1994 and then lived and worked in South London for many years before moving to Suffolk to set up her ceramic studio in 2010.



Bird and Flora
127mm x 177mm
KR 01



Spring Bird
127mm x 177mm
KR 04



Verdant Birds
127mm x 177mm
KR 05



Bird & Mixed Flora
127mm x 177mm
KR 06



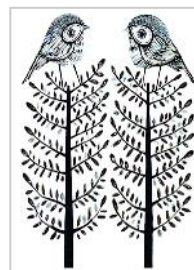
Bird & Summer Blooms
127mm x 177mm
KR 08



Floral Bird
127mm x 177mm
KR 09



Three Trees
127mm x 177mm
KR 10



Twin Trees
127mm x 177mm
KR 11



Tree Bird
127mm x 177mm
KR 12



Family
127mm x 177mm
KR 13



Perching Bird
127mm x 177mm
KR 14



Birds and Flora
127mm x 177mm
KR 16



Bird and Pearly Tree
127mm x 177mm
KR 18



Owl
150mm x 150mm
KR 07



Bird in Landscape
177mm x 127mm
KR 15



Birds in Waves
150mm x 150mm
KR 17



Ploughed Landscape
127mm x 177mm
KR 19

All cards are blank inside and are individually cello wrapped with a white envelope.

Trade Price: £1.22 + VAT each (RRP £2.95)

ALISON CLEMENTS

Alison Clements

Alison was born in Brighton and graduated with a degree in Graphic Design from Ravensbourne College. She draws inspiration from nature and natural forms in rural areas local to Brighton and has developed a unique style of painting, using paints, pencils, collage and pastels in her work to create paintings that are expressive and abstract.



Kitchen Hydrangea
127mm x 177mm
ALC 04



The Life of Poppies
127mm x 177mm
ALC 05



Orange Nouveau
127mm x 177mm
ALC 07



Birthday Flowers
127mm x 177mm
ALC 12



Amaryllis and Eucalypt
127mm x 177mm
ALC 13



Yellow Sketch
127mm x 177mm
ALC 14



Textured Allium
177mm x 127mm
ALC 01



Pink Allium
177mm x 127mm
ALC 02



Sketchbook Hydrangea
177mm x 127mm
ALC 03



Purple Allium
177mm x 127mm
ALC 06



Sketchbook Red Roses
177mm x 127mm
ALC 08



Sketchbook Tulips
177mm x 127mm
ALC 09



Wall Art
177mm x 127mm
ALC 10



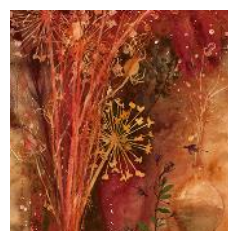
Amaryllis
177mm x 127mm
ALC 11



Protea on Blue
150mm x 150mm
ALC 15



Window Sill Pears
150mm x 150mm
ALC 16



Brown Still Life
150mm x 150mm
ALC 17



Textural Thistle
177mm x 127mm
ALC 18

Customer comment: "I have received delivery of your lovely cards and thought I would let you know how beautiful they are! I can't wait to reopen and see my customers' reactions!" - H.E., Dorset.

All cards are blank inside and are individually cello wrapped with a white envelope.

Trade Price: £1.22 + VAT each (RRP £2.95)

VIVIAN RICHES

V Riches

Vivian, who lives in Kent, has a degree in Printed Textile Design from Loughborough University. She paints vibrant, loose, semi-abstract landscape and floral images, inspired by the natural surroundings, countryside and coastline of eastern England. Although increasingly using mixed media, she has always loved the unpredictable nature of watercolour, the freedom it brings and the way it creates “happy accidents”, resulting in some beautiful colour combinations and effects.



Summer Hedgerow
150mm x 150mm
VR 01



Knapweed
150mm x 150mm
VR 02



Evening Flowers
150mm x 150mm
VR 03



Bouquet
150mm x 150mm
VR 04



Wild Poppies
150mm x 150mm
VR 08



Convolvulus
150mm x 150mm
VR 11



Sunflowers
150mm x 150mm
VR 12



Anemones
150mm x 150mm
VR 14



Cyclamen
150mm x 150mm
VR 15



Carnations
150mm x 150mm
VR 21



Hydrangeas
150mm x 150mm
VR 22



Pink Lily
150mm x 150mm
VR 23



Red Flowers
127mm x 177mm
VR 05



Orange Flowers
127mm x 177mm
VR 06



Honesty
127mm x 177mm
VR 09



Anthurium
127mm x 177mm
VR 13



Meadow with Poppies
127mm x 177mm
VR 25



Gladioli
127mm x 177mm
VR 26



Red Daisies
150mm x 150mm
VR 24



Looking out to Sea
150mm x 150mm
VR 17



Puffins on a Ledge
150mm x 150mm
VR 20



Puffins
177mm x 127mm
VR 18



Puffins above the Waves
177mm x 127mm
VR 19

All cards are blank inside and are individually cello wrapped with a white envelope.

Trade Price: £1.22 + VAT each (RRP £2.95)

CLARE LINDLEY

Clare Lindley

Clare has lived in North Yorkshire all her life and the area has been her primary source of inspiration since she discovered the medium of papercutting. Never in her wildest dreams did she think that the landscape and its inhabitants would run wild through her work. They do now and will continue to do so as long as she can cut paper. Clare shows her work through a number of galleries and has started working with an author to illustrate books.



Balancing Act
127mm x 177mm
CL 01



Fox in Moonlight
127mm x 177mm
CL 02



Stag in the Woods
127mm x 177mm
CL 03



Deer Shelter
127mm x 177mm
CL 04



Fox in the Snow
127mm x 177mm
CL 05



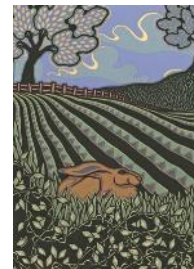
Stargazing Hare
127mm x 177mm
CL 06



Bird on Fence Post
127mm x 177mm
CL 07



Keeping Watch
127mm x 177mm
CL 16



Lying Low
127mm x 177mm
CL 17



Running Hares
127mm x 177mm
CL 18



Hare under a Tree
177mm x 127mm
CL 08



Friend or Foe
177mm x 127mm
CL 09



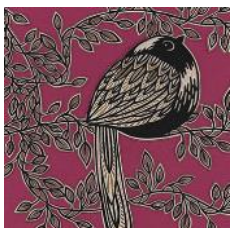
Hare in Blue Meadow
177mm x 127mm
CL 10



Spring Hare
177mm x 127mm
CL 11



Resting Sheep
177mm x 127mm
CL 12



Perching Bird
150mm x 150mm
CL 14



Fan Dance
150mm x 150mm
CL 15



Night Runner
150mm x 150mm
CL 21



The Meeting Place
150mm x 150mm
CL 22

All cards are blank inside and are individually cello wrapped with a white envelope.

Trade Price: £1.22 + VAT each (RRP £2.95)

CLARE LINDLEY

Clare Lindley



In the Shade
177mm x 127mm
CL 13



Playful Fox
177mm x 127mm
CL 19



Hare in the Moonlight
177mm x 127mm
CL 23



Spring at Last
177mm x 127mm
CL 24



Fox in a Meadow
177mm x 127mm
CL 25



Flying a Kite
127mm x 177mm
CL 20



Fairy Ring
127mm x 177mm
CL 26



Midsummer Moon
127mm x 177mm
CL 27



Ghost Bunnies
127mm x 177mm
CL 28

ANGIE McCALL

AmcCall

Angie studied textile design at Coventry and Birmingham Colleges of Art, but has lived in North Yorkshire for the last thirty years. She draws inspiration from her local coastal surroundings and this is portrayed in her paper collage and mixed media work. The quaint and quirky cottages and the higgledy-piggledy shapes of pantile roofs and relevant text woven into her work create a fanciful and unique technique.



Home from the Sea
127mm x 177mm
AM 01



Jubilee Celebrations
127mm x 177mm
AM 02



Fossil Hunting
127mm x 177mm
AM 03



Lunch at the Cod & Lobster
127mm x 177mm
AM 04



Red Sky at Night
127mm x 177mm
AM 05



The Old Sun Inn
127mm x 177mm
AM 06



Yorkshire's Finest
127mm x 177mm
AM 07



Celebrating Le Tour
127mm x 177mm
AM 08



The Twists of Time
150mm x 150mm
AM 09



House in the Dale
150mm x 150mm
AM 10

All cards are blank inside and are individually cello wrapped with a white envelope.

Trade Price: £1.22 + VAT each (RRP £2.95)

LOUISE SCOTT



Louise gained a Degree in fine art printmaking at Cheltenham College of Art and then went on to complete a Diploma in Countryside Management, so that she could combine her love of the natural world with her love of art. She then spent 17 years in Orkney where she developed her unique style of copper plate etching and ran the Inkstone Gallery. Louise now lives and continues to work in the vibrant city of Glasgow.



Badger with Apple
150mm x 150mm
LS 01



Rook
150mm x 150mm
LS 02



Feather and Fern
150mm x 150mm
LS 03



Love Birds
150mm x 150mm
LS 04



A Meeting
150mm x 150mm
LS 05



Owl and Acorns
150mm x 150mm
LS 06



Crow
150mm x 150mm
LS 07



Wren
150mm x 150mm
LS 08



Chick
150mm x 150mm
LS 16



Nest
150mm x 150mm
LS 17



Nest II
150mm x 150mm
LS 18



Nest III
150mm x 150mm
LS 19



Seal Moon
150mm x 150mm
LS 26



Seahorse
150mm x 150mm
LS 27



White Horses
150mm x 150mm
LS 28



White Horses II
150mm x 150mm
LS 29



Eagle Owl
127mm x 177mm
LS 09



Fox
127mm x 177mm
LS 10



Red Squirrel
127mm x 177mm
LS 11



Otter
127mm x 177mm
LS 21

All cards are blank inside and are individually cello wrapped with a white envelope.

Trade Price: £1.22 + VAT each (RRP £2.95)

LOUISE SCOTT



Otter and Dragonfly
127mm x 177mm
LS 22



Seal Rising
127mm x 177mm
LS 23



Frog
127mm x 177mm
LS 24



Toad
127mm x 177mm
LS 25



Hare and Moon
177mm x 127mm
LS 12



Hare Love
177mm x 127mm
LS 13



Hare Love II
177mm x 127mm
LS 14



Leverets in Hiding
177mm x 127mm
LS 15



Happy Hummingbird
177mm x 127mm
LS 20

ANDREW HUTCHINSON



Andrew grew up in Guisborough in North Yorkshire and went on to train in graphics and illustration. He has since developed into one of the UK's leading wildlife artists, regularly exhibiting in the United States amongst the world's elite. After ten years in the Scottish Highlands, Andrew and his family have now returned to live and work in the beautiful North Yorkshire countryside.



Bank Vole
150mm x 150mm
AH 01



Bullfinch
150mm x 150mm
AH 02



Great Tit
150mm x 150mm
AH 03



Robin on Post
150mm x 150mm
AH 04



Blue Tit
150mm x 150mm
AH 05



Long-tailed Tit
150mm x 150mm
AH 06



Rabbit
150mm x 150mm
AH 07



Red Squirrel
150mm x 150mm
AH 08

All cards are blank inside and are individually cello wrapped with a white envelope.

Trade Price: £1.22 + VAT each (RRP £2.95)

CARLA VIZE-MARTIN

Carla Vize-Martin

Carla grew up in the New Forest in the south of England. From an early age she has been fascinated by nature's vibrant pallet. Passionate about painting, Carla became a professional artist in 2010 and since then she has developed a unique and recognisable style. Her work has been shown in galleries around the UK and is held in collections across Europe.



Peace
150mm x 150mm
CVM 01



Poppy Field
150mm x 150mm
CVM 02



Meadowsweet
150mm x 150mm
CVM 03



Midsummer's Day
150mm x 150mm
CVM 04



Here and There
150mm x 150mm
CVM 05



Innocence
150mm x 150mm
CVM 06



Wild Abandon
150mm x 150mm
CVM 07



Brushes with Nature
150mm x 150mm
CVM 08



Paradise Found
150mm x 150mm
CVM 09



After the Harvest
150mm x 150mm
CVM 10



Out on the Prowl
150mm x 150mm
CVM 11



Home to Roost
150mm x 150mm
CVM 12



Sunset over the Lake
150mm x 150mm
CVM 13



Blackbird
150mm x 150mm
CVM 14



Blue Tits
150mm x 150mm
CVM 15



Bullfinch
150mm x 150mm
CVM 16



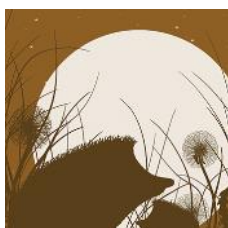
Goldfinch
150mm x 150mm
CVM 17



Long-tailed Tit
150mm x 150mm
CVM 18



Waxwing
150mm x 150mm
CVM 19



Clocking On
150mm x 150mm
CVM 20



Looking Out
150mm x 150mm
CVM 21



Night Shift
150mm x 150mm
CVM 22



Midnight Feast
150mm x 150mm
CVM 23



Red Alert
150mm x 150mm
CVM 24

All cards are blank inside and are individually cello wrapped with a white envelope.

Trade Price: £1.22 + VAT each (RRP £2.95)

CLAIRE WEST

Claire West

Claire works from her studio in Beverley, East Yorkshire. She enjoys the variety of working on large acrylic paintings as well as traditional Lino printing, recently diversifying further into digital art. Her work is strongly influenced by nature in all its beauty and the joy of bright colours. Claire's artworks have been exhibited in galleries throughout the UK and have also occasionally appeared on the sets of well-known television programmes.



Two Little Owls
150mm x 150mm
CW 01



Starry Night with Owl
150mm x 150mm
CW 02



White Birds
150mm x 150mm
CW 03



Three Birds
150mm x 150mm
CW 04



Hillary Wears Vintage Liberty
150mm x 150mm
CW 05



Nice Coat
150mm x 150mm
CW 06



Dogs on Beach
150mm x 150mm
CW 07



Groovy Cats
150mm x 150mm
CW 08



Something Fishy
150mm x 150mm
CW 09



Nest
150mm x 150mm
CW 10



Worth the Wait
150mm x 150mm
CW 11



Bird and Blooms
150mm x 150mm
CW 12



Blackbirds in the Treetops
150mm x 150mm
CW 13



Flock on the Shoreline
150mm x 150mm
CW 14



Badgers
150mm x 150mm
CW 15



Garden Lover
150mm x 150mm
CW 16



Full Bloom
150mm x 150mm
CW 17



Homes on the Hill
150mm x 150mm
CW 18



Colourful Landscape
150mm x 150mm
CW 19



Silver Birch
150mm x 150mm
CW 20

All cards are blank inside and are individually cello wrapped with a white envelope.

Trade Price: £1.22 + VAT each (RRP £2.95)

GEOFF BECKETT

Geoff
Beckett

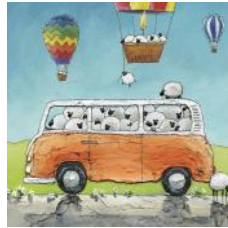
Geoff is a Welsh artist who works from his home studio in the Cheshire countryside. Growing up on a dairy farm, he gained a degree in Maths & Statistics before pursuing his other passion as a self-taught artist. His paintings have been exhibited and collected across the UK and further afield. Geoff is known for his animal portraits bursting with humour and his quirky landscapes that involve thick layers of acrylic texture and glossy resin.



Flock Calling
150mm x 150mm
GB 01



Ewe Rang
150mm x 150mm
GB 02



Grand Day Out
150mm x 150mm
GB 03



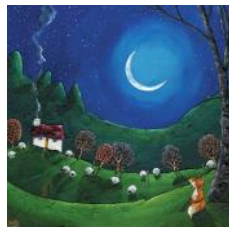
Great Escape
150mm x 150mm
GB 04



Moonlit Flock
150mm x 150mm
GB 05



Lunar Lustre
150mm x 150mm
GB 06



Midnight Dreams
150mm x 150mm
GB 07



Distant Light
150mm x 150mm
GB 08



Flocking Clouds
150mm x 150mm
GB 09



Purple Hills
150mm x 150mm
GB 10



Hug Ewe
150mm x 150mm
GB 11



Pink River
150mm x 150mm
GB 12



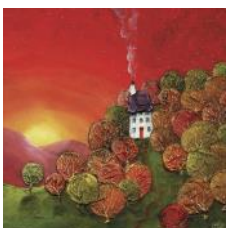
Breezy Days
150mm x 150mm
GB 13



Moonlit Harbour
150mm x 150mm
GB 14



Snug Craft
150mm x 150mm
GB 15



Cosy in the Trees
150mm x 150mm
GB 16



Cowherder
150mm x 150mm
GB 17



Chatty Cow
150mm x 150mm
GB 18



Farmer Nellie
150mm x 150mm
GB 19



Farmer Jeremy
150mm x 150mm
GB 20

All cards are blank inside and are individually cello wrapped with a white envelope.

Trade Price: £1.22 + VAT each (RRP £2.95)

GEOFF BECKETT

Geoff Beckett



Cheeky
150mm x 150mm
GB 21



Daisy
150mm x 150mm
GB 22



Mischief
150mm x 150mm
GB 23



Tulip
150mm x 150mm
GB 24



Christmoos Tree
150mm x 150mm
GB 25



Happy Hollydays
150mm x 150mm
GB 26



Moodolph
150mm x 150mm
GB 27



Sleigh Ride
150mm x 150mm
GB 28



Hen Party
150mm x 150mm
GB 29



Boating
150mm x 150mm
GB 30

CHRISTOPHER McCOLL

Chris McColl

Christopher graduated with a 1st Class Honours Degree in Illustration from Edinburgh College of Art. He has an eclectic range of styles and works in a wide range of drawing and painting media, as well as digital. A life-long fascination and love of birds and other animals inspires many of his distinctive, quirky artworks and designs. Christopher's eye-catching, appealing work continues to prove very popular.



Flock of Avocets
150mm x 150mm
CM 06



Flock of Oystercatchers
150mm x 150mm
CM 07



Head of a Heron
150mm x 150mm
CM 10



Knots
150mm x 150mm
CM 11



Fieldfares and Redwings
150mm x 150mm
CM 12



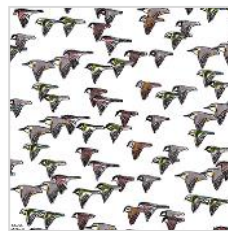
Wheatears
150mm x 150mm
CM 13



Ringed Plovers
150mm x 150mm
CM 14



Goldfinches
150mm x 150mm
CM 15



Mixed Flock
150mm x 150mm
CM 16

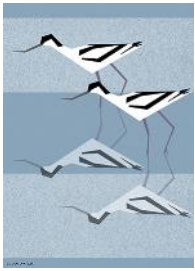


Puffins
150mm x 150mm
CM 22

All cards are blank inside and are individually cello wrapped with a white envelope.

Trade Price: £1.22 + VAT each (RRP £2.95)

More Christopher McColl overleaf.



Avocets
127mm x 177mm
CM 01



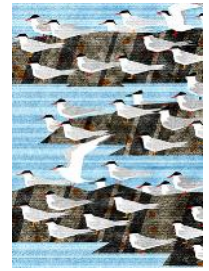
Great Crested Grebes
127mm x 177mm
CM 02



Heron in Reeds
127mm x 177mm
CM 03



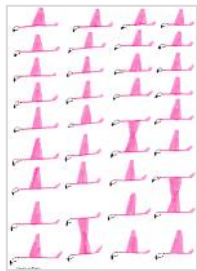
Oystercatchers
127mm x 177mm
CM 04



Terns
127mm x 177mm
CM 05



Gannets
127mm x 177mm
CM 09



Flamingos in Flight
127mm x 177mm
CM 18



Toucans
127mm x 177mm
CM 21



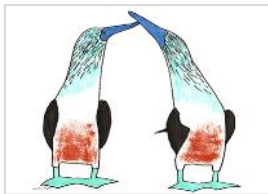
Butterflies
127mm x 177mm
CM 30



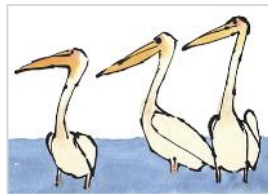
Gannets in Flight
177mm x 127mm
CM 08



Flamingos
177mm x 127mm
CM 17



Blue Footed Boobies
177mm x 127mm
CM 19



Pelicans
177mm x 127mm
CM 20



Lemur
177mm x 127mm
CM 24



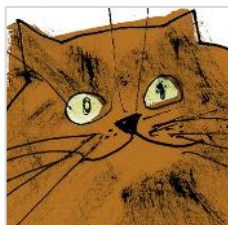
Sleeping Cat
177mm x 127mm
CM 27



Penguins
150mm x 150mm
CM 25



Polar Bears
150mm x 150mm
CM 26



Ginger Cat
150mm x 150mm
CM 28



Busy Bees
150mm x 150mm
CM 29



Cherry Trees
150mm x 150mm
CM 31

All cards are blank inside and are individually cello wrapped with a white envelope.

Trade Price: £1.22 + VAT each (RRP £2.95)

OWEN FINDLEY

Owen Findley designs and hand screenprints from his studio in Leeds under the studio name OR8DESIGN. A contemporary take on the landscape print, Owen's work has been described as 'minimalist wanderlust'. Embracing negative space and bold, flowing shapes, he draws the viewer in and takes them on an adventure through the landscape. His minimal prints focus less on the detail and more on capturing the emotion of a place; hazy memories of childhood visits and fleeting moments from favourite holidays. This gives his prints a calm, dream-like feel.



Boat
127mm x 177mm
OF 01



Cabin
127mm x 177mm
OF 02



Lighthouse
127mm x 177mm
OF 03



Close My Eyes...
127mm x 177mm
OF 04



Escape to the Forest
127mm x 177mm
OF 07



Where We Walk
127mm x 177mm
OF 08



Night Time Cottage
127mm x 177mm
OF 09



Silent Forest
127mm x 177mm
OF 10



Lost in the Stars
127mm x 177mm
OF 11



Winter Campers
127mm x 177mm
OF 12



Winter Cabin
127mm x 177mm
OF 13



Aurora
127mm x 177mm
OF 14



Drift Away Like The Sun
127mm x 177mm
OF 15



Railway Viaduct
127mm x 177mm
OF 16



A Walk in Fresh Snow
127mm x 177mm
OF 17



Night Time Campers
127mm x 177mm
OF 18



Red Roof Cabin
150mm x 150mm
OF 05



Lake in the Hills
150mm x 150mm
OF 06



Nowhere to Go ...
150mm x 150mm
OF 19

All cards are blank inside and are individually cello wrapped with a white envelope.

Trade Price: £1.22 + VAT each (RRP £2.95)

NIKKI MONAGHAN

N. Monaghan

Nikki, who lives in Stirlingshire in Scotland, takes inspiration for her quirky paintings from the everyday; the weather, a colour that catches her eye, a situation. She paints using a mix of acrylics, oil pastels and collage on board and canvas, layering up media to create dense, rich colours.



Orange and Green Bird
150mm x 150mm
NM 01



Pink and Green Bird
150mm x 150mm
NM 02



Pink Leaves
150mm x 150mm
NM 03



Two Green Birds
150mm x 150mm
NM 04



Two Tweets
150mm x 150mm
NM 05



Tree and Three Red Birds
150mm x 150mm
NM 06



Blossom Tree
150mm x 150mm
NM 07



Beach
150mm x 150mm
NM 08



Woodland Walk
150mm x 150mm
NM 09



Autumn Walk
150mm x 150mm
NM 10



Winter Green
150mm x 150mm
NM 11



Snowdrops
150mm x 150mm
NM 12



Under the Pink Umbrella
150mm x 150mm
NM 14



Gold Blossom
150mm x 150mm
NM 15



Downpour
150mm x 150mm
NM 17



Night Boat
150mm x 150mm
NM 19



Pink Bird on Grey
150mm x 150mm
NM 20



Blue Harbour
150mm x 150mm
NM 22



Golden Haze
150mm x 150mm
NM 23



Harbour Mist
150mm x 150mm
NM 24



Golden Tree
150mm x 150mm
NM 25



Harbour View
150mm x 150mm
NM 26



Spotty Bird on Green
150mm x 150mm
NM 27



Frosty Green
150mm x 150mm
NM 28

All cards are blank inside and are individually cello wrapped with a white envelope.

Trade Price: £1.22 + VAT each (RRP £2.95)



Blossom
150mm x 150mm
NM 29



Three Birds, Windy Walk
150mm x 150mm
NM 31



Sunset Trees
150mm x 150mm
NM 32



Beach Walkies
150mm x 150mm
NM 33



Midnight Watch
150mm x 150mm
NM 34



Night Gathering
150mm x 150mm
NM 35



Stag and Spotty Bird
150mm x 150mm
NM 36



Stag on Green
150mm x 150mm
NM 37



Stags and Silver Snow
150mm x 150mm
NM 39



Windy Day
150mm x 150mm
NM 40



Winter Walk
150mm x 150mm
NM 41



Snowy Night
150mm x 150mm
NM 42



Black Cat Garden
150mm x 150mm
NM 43



Feeding the Birds
150mm x 150mm
NM 44



Blue Spotty Bird
150mm x 150mm
NM 45



Neighbours Meet
150mm x 150mm
NM 46



The Avenue
150mm x 150mm
NM 47



Bright and Cheerful
150mm x 150mm
NM 48



Night Harbour Boat
150mm x 150mm
NM 49



The Gymnast
150mm x 150mm
NM 51



Arran
150mm x 150mm
NM 52



Dreamer
150mm x 150mm
NM 53



Evening Sun
150mm x 150mm
NM 54



Loch Haar
150mm x 150mm
NM 55



Memories
150mm x 150mm
NM 56



Morning Jaunt
150mm x 150mm
NM 57



Mustard Walk
150mm x 150mm
NM 58



Summer
150mm x 150mm
NM 59



Winter Sunset
150mm x 150mm
NM 60



Winter Estate
150mm x 150mm
NM 61

All cards are blank inside and are individually cello wrapped with a white envelope.

Trade Price: £1.22 + VAT each (RRP £2.95)

More Nikki Monaghan overleaf.

NIKKI MONAGHAN

N. Monaghan



Evening Snowfall
150mm x 150mm
NM 62



Beach Huts
150mm x 150mm
NM 63



Blue Haze
150mm x 150mm
NM 64



Sunset Beach
150mm x 150mm
NM 65



Morning Orange
150mm x 150mm
NM 66



Across the Fields
150mm x 150mm
NM 67



Moonlit Terrace
150mm x 150mm
NM 68



Winter Stag
150mm x 150mm
NM 69



Bird with Blossoms
150mm x 150mm
NM 70



Tree-lined Walk
150mm x 150mm
NM 71



Three Umbrellas
150mm x 150mm
NM 72



June Harbour
150mm x 150mm
NM 73



Stag Party
150mm x 150mm
NM 75



Stags on Autumn Teal
150mm x 150mm
NM 76



Evening Valley
150mm x 150mm
NM 77



Church above Harbour
150mm x 150mm
NM 78



Cows in Winter
150mm x 150mm
NM 79



Safe Harbour
150mm x 150mm
NM 81



Autumn, Highland Loch
150mm x 150mm
NM 82



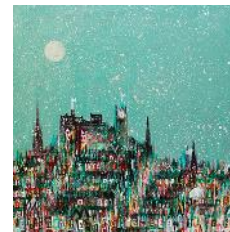
Evening Reflections
150mm x 150mm
NM 83



Highland Cottage
150mm x 150mm
NM 84



Island Cottage
150mm x 150mm
NM 85



Afternoon Snow
150mm x 150mm
NM 86



Cobbled Street
150mm x 150mm
NM 87



Cobbles, Potted Plants
150mm x 150mm
NM 88



Golden Moon
150mm x 150mm
NM 89



Harbour House
150mm x 150mm
NM 90



Old Town
150mm x 150mm
NM 91



Starry Night
150mm x 150mm
NM 92



The White Cottage
150mm x 150mm
NM 93

All cards are blank inside and are individually cello wrapped with a white envelope.

Trade Price: £1.22 + VAT each (RRP £2.95)

CLOTHYLDE VERGNES



Clothylde was born and grew up in the south of France. Although she was drawn to art from an early age, she did not start to paint seriously until she moved to England in the late 1970s. She has lived close to the North Yorkshire coast ever since and became a full-time artist in 2004, selling her work through a number of Yorkshire galleries. Examples of her work can now be found in private collections as far afield as Australia, Canada and the USA.



Waiting for the Boat
127mm x 177mm
CV 01



Bay Blues
127mm x 177mm
CV 02



Bay Curves
127mm x 177mm
CV 03



Still Water
127mm x 177mm
CV 04



Sunny Place
127mm x 177mm
CV 05



Autumn Tapestry
127mm x 177mm
CV 06



Heather Moorland
127mm x 177mm
CV 07



High Winter
127mm x 177mm
CV 08



Moon
127mm x 177mm
CV 16



Beach Huts
177mm x 127mm
CV 09



Fairy Hill
177mm x 127mm
CV 10



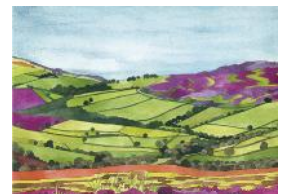
Summer Tapestry
177mm x 127mm
CV 11



Approaching Storm
177mm x 127mm
CV 12



Coastal Vista
177mm x 127mm
CV 13



August Moors
177mm x 127mm
CV 14



Winter Oak I
177mm x 127mm
CV 17



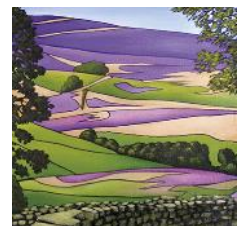
Bluebell Wood
177mm x 127mm
CV 21



Hill Farm in Spring
150mm x 150mm
CV 22



Summer Moorland
150mm x 150mm
CV 23



Heather Moors
150mm x 150mm
CV 24

All cards are blank inside and are individually cello wrapped with a white envelope.

Trade Price: £1.22 + VAT each (RRP £2.95)

KATE GREEN



Kate moved back to Norfolk in 2006 after completing an MA in Visual Communication at Birmingham UCE and began to work solely on her art and illustration practice. Her house is a 15 minute walk from the sea and she takes inspiration from the abundance of wildlife nearby and particularly the quince tree in her garden, which is often full of birds.



Barn Owl among Birch
150mm x 150mm
KG 01



Owl over Saltmarsh
150mm x 150mm
KG 02



Little Owl
150mm x 150mm
KG 03



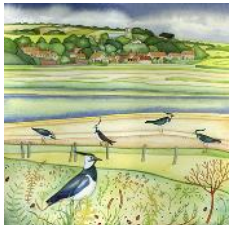
Silent Hunter
150mm x 150mm
KG 04



Owl in Birch Wood
150mm x 150mm
KG 05



Bittern in the Reeds
150mm x 150mm
KG 06



Saltmarsh Lapwings
150mm x 150mm
KG 07



Sleeping Waders
150mm x 150mm
KG 08



Waders in the Shallows
150mm x 150mm
KG 09



Curlews
150mm x 150mm
KG 10



Goldfinches/Teasels
150mm x 150mm
KG 11



Goldfinches/Sunflowers
150mm x 150mm
KG 12



Sparrow
150mm x 150mm
KG 13



Long-tailed Tit
150mm x 150mm
KG 14



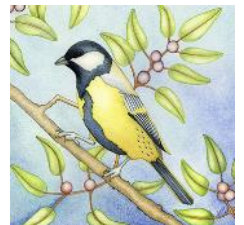
Coal Tit
150mm x 150mm
KG 15



Blackbird
150mm x 150mm
KG 16



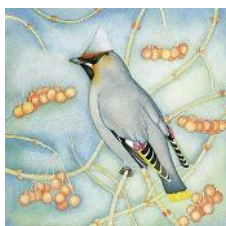
Siskin
150mm x 150mm
KG 17



Great Tit
150mm x 150mm
KG 18



Goldfinch
150mm x 150mm
KG 19



Waxwing
150mm x 150mm
KG 20



Barn Owl and Web
150mm x 150mm
KG 21



Moonlight Majesty
150mm x 150mm
KG 22



Fox in the Moonlight
150mm x 150mm
KG 23



Leaping Deer
150mm x 150mm
KG 24

All cards are blank inside and are individually cello wrapped with a white envelope.

Trade Price: £1.22 + VAT each (RRP £2.95)

KATE GREEN




Hare on the Marshes
150mm x 150mm
KG 25



Autumn Hare
150mm x 150mm
KG 26



Sheep
150mm x 150mm
KG 27



Black-tailed Godwit
150mm x 150mm
KG 40



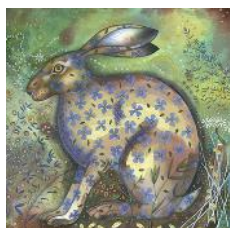
Little Ringed Plover
150mm x 150mm
KG 41



Stone Curlew
150mm x 150mm
KG 42



Sparrows in the Park
150mm x 150mm
KG 43



Mad March Hare
150mm x 150mm
KG 45



Finding a Ship in a Bottle
150mm x 150mm
KG 47



Barry
150mm x 150mm
KG 48



Bernard
150mm x 150mm
KG 49



Bill
150mm x 150mm
KG 50



Stretching Cat
150mm x 150mm
KG 51



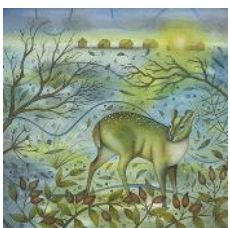
The Yellow Jug
150mm x 150mm
KG 52



I Saw Three Ships
150mm x 150mm
KG 53



Winter Barn Owl
150mm x 150mm
KG 54



Muntjac on the Heath
150mm x 150mm
KG 55



Robin
150mm x 150mm
KG 57



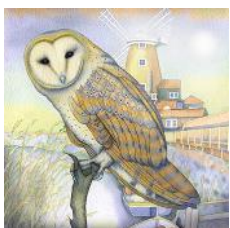
Moonlit Hares
150mm x 150mm
KG 58



Solstice Night
150mm x 150mm
KG 59



Tawny Owl in Birches
150mm x 150mm
KG 60



Barn Owl by the Mill
150mm x 150mm
KG 64



Barn Owl over Water
150mm x 150mm
KG 65



Owl over the Village
150mm x 150mm
KG 66



Little Plover
150mm x 150mm
KG 67



Hare in the Reeds
150mm x 150mm
KG 68

All cards are blank inside and are individually cello wrapped with a white envelope.

Trade Price: £1.22 + VAT each (RRP £2.95)

More Kate Green overleaf.

KATE GREEN




Winter Hares
150mm x 150mm
KG 69



Partridge in a Pear Tree
150mm x 150mm
KG 72



Fat Pheasant
150mm x 150mm
KG 73



Two Turtle Doves
150mm x 150mm
KG 74



Avocet
150mm x 150mm
KG 75



Portrait of an Owl
150mm x 150mm
KG 76



Lapwing on the Coast
150mm x 150mm
KG 77



Two Little Owls
150mm x 150mm
KG 78



Little Birds on the Shore
150mm x 150mm
KG 79



Little Tern
150mm x 150mm
KG 80



Dunlin on the Sea Shore
150mm x 150mm
KG 81



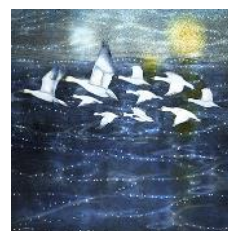
Winterton Hare
150mm x 150mm
KG 82



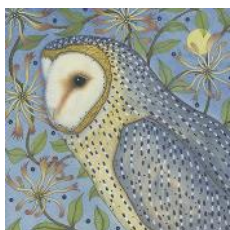
Hare on the Winter Marsh
150mm x 150mm
KG 83



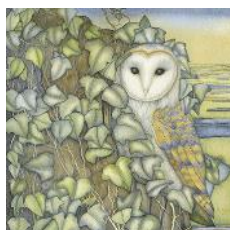
Fox
150mm x 150mm
KG 84



Snow Patrol
150mm x 150mm
KG 85



Barn Owl and Honeysuckle
150mm x 150mm
KG 86



Barn Owl
150mm x 150mm
KG 87



Bee
150mm x 150mm
KG 88



Still Life with House Martin
150mm x 150mm
KG 89



Don Quixote's Flowers
150mm x 150mm
KG 90



Spring Snowdrops
150mm x 150mm
KG 91



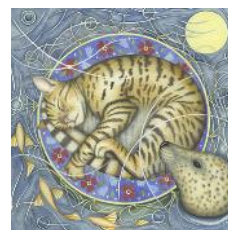
Primroses in a Yellow Jug
150mm x 150mm
KG 92



Fritillaries
150mm x 150mm
KG 93



Fritillaries in a Blue Jug
150mm x 150mm
KG 94



Cat's Cradle
150mm x 150mm
KG 95

All cards are blank inside and are individually cello wrapped with a white envelope.

Trade Price: £1.22 + VAT each (RRP £2.95)

KATE GREEN



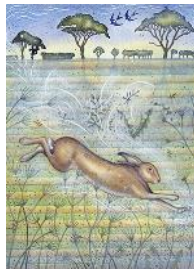
Marsh Harrier
127mm x 177mm
KG 28



Silent Watcher
127mm x 177mm
KG 29



Hare
127mm x 177mm
KG 30



Spring Hare
127mm x 177mm
KG 31



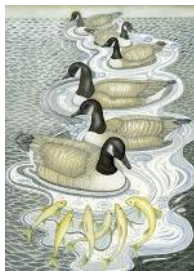
The Tender Owl
127mm x 177mm
KG 32



The Elegant Owl
150mm x 150mm
KG 61



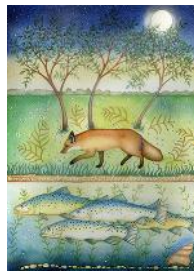
Barn Owl over Wetland
127mm x 177mm
KG 44



Geese in Line
127mm x 177mm
KG 46



Short-eared Owl
127mm x 177mm
KG 62



Fox and Fish
127mm x 177mm
KG 70



Barn Owl in the Willow
127mm x 177mm
KG 71



Barn Owls
150mm x 150mm
KG 63



Avocets at Low Tide
177mm x 127mm
KG 33



Avocets over the Shore
177mm x 127mm
KG 34



Snipe
177mm x 127mm
KG 35



Swallows and Sunflowers
177mm x 127mm
KG 36



Hare on the Saltmarsh
177mm x 127mm
KG 37



Summer Hare
177mm x 127mm
KG 38



Fallow Deer
177mm x 127mm
KG 39



Wind in the Beeches
177mm x 127mm
KG 56

Customer comment: "The cards arrived yesterday and once again we are very pleased with them. Our customers like Natural Partners cards (and so do we), so we will be looking to stock up again soon." - P.W., Scotland.

All cards are blank inside and are individually cello wrapped with a white envelope.

Trade Price: £1.22 + VAT each (RRP £2.95)

JUDY MUSSELLE

Judy Musselle

Judy is a multidisciplinary artist, living on the Sefton coast. She studied Art and Design at Bradford College in the 1980s and has worked as an illustrator, as well as an educational and community artist. Moving away from the restrictions of commercial illustration, her work now inhabits the world of magical surrealism and visual storytelling. Inspired by fairy tales and childhood memories, she focuses on the themes of strong female characters and their relationship with enchanted creatures.



Fox and Hummingbird
127mm x 177mm
JM 04



Cormorants of Advaer
127mm x 177mm
JM 05



Rabbit in the Grass
127mm x 177mm
JM 06



Safe
127mm x 177mm
JM 07



Sleeping Fox
127mm x 177mm
JM 08



Midnight Escape
127mm x 177mm
JM 09



Snow Angel
127mm x 177mm
JM 10



The Rehearsal
127mm x 177mm
JM 11



The Winter Bride
127mm x 177mm
JM 12



The Archer
127mm x 177mm
JM 14



Black Cat in the Flower Bed
177mm x 127mm
JM 01



Blackbird
177mm x 127mm
JM 02



Fox in the Marshes
177mm x 127mm
JM 03



Pigs Crossing
177mm x 127mm
JM 13



The Key
177mm x 127mm
JM 15



Velvet Trail
177mm x 127mm
JM 16



The Cat and the Fiddle
177mm x 127mm
JM 17



Gretel and the Swan
150mm x 150mm
JM 18



Wolf Waltz
150mm x 150mm
JM 19

All cards are blank inside and are individually cello wrapped with a white envelope.

Trade Price: £1.22 + VAT each (RRP £2.95)

GOSHA GIBEK



Gosha was born and grew up in Poland, where she studied art at the Academy of Fine Arts in Wroclaw. She now lives and works in the north west of England. Gosha is blessed with synesthesia, a condition in which one hears colours, feels sounds and tastes shapes, leading in her case to her seeing words in colour and in space. She aims to show these amazing colours to the world through her art, in which she uses household gloss paint, dripping it freely from a palette knife to obtain the effect of motion with free, dynamic lines and saturated colours.



Bikes Bring You Places
177mm x 127mm
GG 01



Follow the Biking Path
177mm x 127mm
GG 02



Beats a Day in the Office
177mm x 127mm
GG 03



Adventures Together Last
177mm x 127mm
GG 04



Life is a Beautiful Ride
177mm x 127mm
GG 05



Love is a Bike Ride...
177mm x 127mm
GG 06



Thank You Team
177mm x 127mm
GG 07



Pursuit to Victory
177mm x 127mm
GG 08



Lost in the Right Direction
177mm x 127mm
GG 09



The Game isn't Over...
177mm x 127mm
GG 13



Act Like a Lady...
177mm x 127mm
GG 14



The Gym is My Fix
177mm x 127mm
GG 15



The Most Important Shot
177mm x 127mm
GG 16



You Got This
177mm x 127mm
GG 17



After the Hardest Climb
177mm x 127mm
GG 18



Hanging Around
177mm x 127mm
GG 20



In the Middle of Nowhere
177mm x 127mm
GG 21



The Sound of Blades
177mm x 127mm
GG 22



Just Like Flying
177mm x 127mm
GG 23



Friends that Run Together...
127mm x 177mm
GG 10



It's a Runderful Life
127mm x 177mm
GG 11



Every Mile is Worthwhile
127mm x 177mm
GG 12



There is No Shortcut
127mm x 177mm
GG 19

All cards are blank inside and are individually cello wrapped with a white envelope.
Trade Price: £1.22 + VAT each (RRP £2.95)

SHEENA McGOOGAN

Sheena Fraser McGoogan

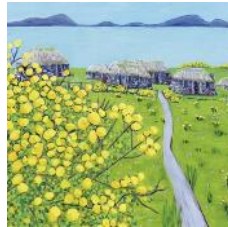
Sheena was born in Montreal, Canada, where she painted from an early age in her artist grandfather's studio. Years later, she graduated with a double major in painting and printmaking from the University of British Columbia. Now living in Toronto, she paints with acrylic on canvas, using bold colours to create mood and excitement. Her inspiration comes from her extensive research trips with her author husband, Ken, in the Canadian Arctic, Nova Scotia, Greenland, Ireland and the Scottish Highlands and Islands.



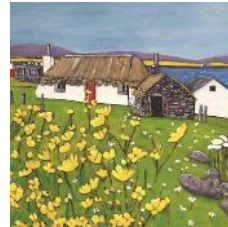
Crofts in the Highlands
150mm x 150mm
SFM 01



Highland Castle
150mm x 150mm
SFM 02



Highland Folk Village
150mm x 150mm
SFM 03



White Croft by Sea
150mm x 150mm
SFM 04



Croft with Telephone
150mm x 150mm
SFM 05



White Croft
150mm x 150mm
SFM 06



Spring in Mountains
150mm x 150mm
SFM 07



Boats Along the Shore
150mm x 150mm
SFM 08



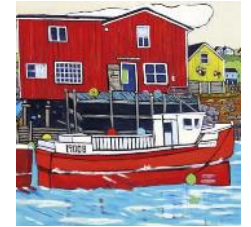
Arctic Harbour
150mm x 150mm
SFM 09



Yellow Store and Boats
150mm x 150mm
SFM 10



Mountain View
150mm x 150mm
SFM 11



Red Fishing Boat
150mm x 150mm
SFM 12



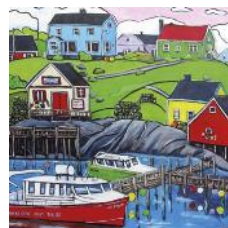
Red Boat in Harbour
150mm x 150mm
SFM 13



White Dory in Cove
150mm x 150mm
SFM 14



Yellow Dory
150mm x 150mm
SFM 15



Peggy's Cove Boat Tours
150mm x 150mm
SFM 16



Night in the Arctic
150mm x 150mm
SFM 17



Boats in Cold Waters
150mm x 150mm
SFM 18



Mountain Lake in Winter
150mm x 150mm
SFM 19



Blue Stag
150mm x 150mm
SFM 20



Winter in Mountains
150mm x 150mm
SFM 21



Going Kayaking
150mm x 150mm
SFM 22



Red Pub
150mm x 150mm
SFM 23



Red Flowers
150mm x 150mm
SFM 24

All cards are blank inside and are individually cello wrapped with a white envelope.

Trade Price: £1.22 + VAT each (RRP £2.95)

SHEENA McGOOGAN

Sheena Fraser McGoogan



Irish Summer Garden
150mm x 150mm
SFM 25



Ring of Kerry Sheep
150mm x 150mm
SFM 26



Farm in the Isles
150mm x 150mm
SFM 27



Thistles and Crofts
150mm x 150mm
SFM 28



Washing Line
150mm x 150mm
SFM 29



Sheep in the Highlands
150mm x 150mm
SFM 30

MARY STUBBERFIELD

Mary Stubberfield

Mary trained at Bournemouth College of Art and her award-winning illustrations can be found worldwide in private collections, on greeting cards and in the pages of magazines. Her art has been exhibited widely in the UK, the USA and Greece, where she came to the aid of cats in need while living on an island. Her favourite subjects are nature, wildlife, coastal scenes and cat portraits.



Poppies
150mm x 150mm
MS 01



Cottage
150mm x 150mm
MS 02



Village Floral
150mm x 150mm
MS 03



Seaside Floral
150mm x 150mm
MS 04



Winter Park
150mm x 150mm
MS 11



St Martins in the Field
150mm x 150mm
MS 12



Sea Blossom
127mm x 177mm
MS 06



Harbour Dogs
127mm x 177mm
MS 07



Beach Dogs
127mm x 177mm
MS 08



Snow Dogs
127mm x 177mm
MS 09



Snow Harbour
127mm x 177mm
MS 10



Pear Trees
127mm x 177mm
MS 13



Teal Tundra
127mm x 177mm
MS 14



Rabbits
127mm x 177mm
MS 15



Winter Fox
177mm x 127mm
MS 16



Floral
177mm x 127mm
MS 05

All cards are blank inside and are individually cello wrapped with a white envelope.

Trade Price: £1.22 + VAT each (RRP £2.95)

ANTONIA DENNIS

Antonia Dennis

Inspired by a painting in a gallery window, Antonia started her career as an acrylic artist in 2014. Encouraged by the reaction on social media and in local galleries, and by being voted “the Public’s Favourite” in her first two exhibitions, she went on to win awards in both national and international competitions. Her love for animals and her quirky sense of humour ensure that her paintings appeal to adults and children alike. Antonia switched from acrylic to digital in 2021, thinking it would free up space in her studio, but in reality it only resulted in the production of a lot more art!



A Sky Full of Stars
150mm x 150mm
AD 01



A Sting in the Tail
150mm x 150mm
AD 02



A Tad Distracted
150mm x 150mm
AD 03



An Apple a Day
150mm x 150mm
AD 04



Fits Like a Glove
150mm x 150mm
AD 05



Meet at the Toadstools
150mm x 150mm
AD 06



Under the Bluebells
150mm x 150mm
AD 07



Light My Fire
150mm x 150mm
AD 08



King of My Castle
150mm x 150mm
AD 09



Jammin
150mm x 150mm
AD 10



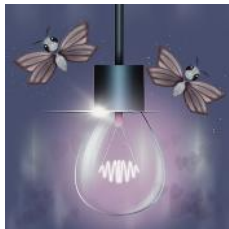
Show Me the Honey
150mm x 150mm
AD 11



Cat Got the Cream
150mm x 150mm
AD 12



If Wings Fit Wear Em
150mm x 150mm
AD 13



Leave Light on for Me
150mm x 150mm
AD 14



Keep the Ban
150mm x 150mm
AD 15



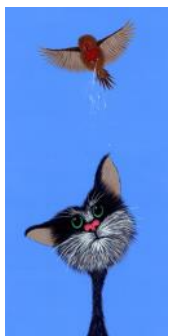
No Palm In The Tub
150mm x 150mm
AD 16



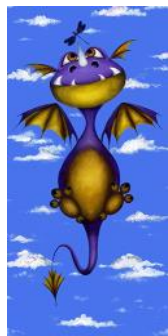
Red Alert
150mm x 150mm
AD 17



Cold Feet... Warm Heart
150mm x 150mm
AD 18



Bombs Away
99mm x 210mm
AD 26



Dragon Fly
99mm x 210mm
AD 27



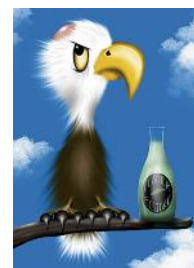
Up Up and Away!
99mm x 210mm
AD 28



Stretch
99mm x 210mm
AD 29



On the Rocks
127mm x 177mm
AD 22



Bald Eagle
127mm x 177mm
AD 23



Never Rains but Paws
127mm x 177mm
AD 24

All cards are blank inside and are individually cello wrapped with a white envelope.

Trade Price: £1.22 + VAT each (RRP £2.95)



It's Friesian Outside
150mm x 150mm
AD 19



Snowy Days
150mm x 150mm
AD 20



Under a Star
150mm x 150mm
AD 21



Just the Two of Us
150mm x 150mm
AD 30



Who's a Pretty Boy
150mm x 150mm
AD 31



It's a Kind of Magic
127mm x 177mm
AD 25

ANNE BARDSLEY



Anne is a Manchester-based artist who creates work mainly themed around endangered animals. Over the years she's created a variety of artistic styles which allow her to present each animal in a unique way, employing a different technique depending on what impact she's hoping to achieve.



Pigeon on Green
150mm x 150mm
BRD 01



Pigeon on Yellow
150mm x 150mm
BRD 02



Rainbow Raptor
150mm x 150mm
BRD 03



Surprise Visit
150mm x 150mm
BRD 04



Hide and Seek
150mm x 150mm
BRD 05



Take a Break
150mm x 150mm
BRD 06



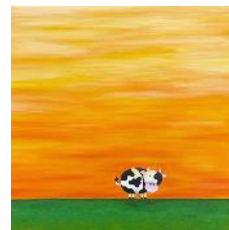
Paridae of Love
150mm x 150mm
BRD 07



Mary Had a Little Lamb
150mm x 150mm
BRD 08



This Little Piggy
150mm x 150mm
BRD 09



With a Moo Moo Here
150mm x 150mm
BRD 10



Orangutanya
127mm x 177mm
BRD 11



Sugar
127mm x 177mm
BRD 12



One for Sorrow
127mm x 177mm
BRD 13



Swinging Symphony
127mm x 177mm
BRD 14



Royal Fanfare
177mm x 127mm
BRD 15



What Big Teeth You Have
177mm x 127mm
BRD 16

All cards are blank inside and are individually cello wrapped with a white envelope.
Trade Price: £1.22 + VAT each (RRP £2.95)

MORAG LLOYDS



Morag is a Scottish artist living and working in the hills at the edge of the Loch Lomond and The Trossachs National Park. Trained in Scotland and England in both Illustration and Fine Art, Morag first worked as a designer in London in the 1980s on many projects around the City. Since then she has worked with organisations combining art with healthcare and for several years worked as a lecturer in community education. Now painting full-time, she finds inspiration from designs and the history of the landscape, especially around the Western Isles where she has sailed and explored for many years.



A Good Place to Dream
150mm x 150mm
ML 01



By the Wishing Tree
150mm x 150mm
ML 02



Dancing in Moonlight
150mm x 150mm
ML 03



Singing to the Moon
150mm x 150mm
ML 04



Special Moments
150mm x 150mm
ML 05



The Last Leaf
150mm x 150mm
ML 06



Under the Trees
150mm x 150mm
ML 07



Waiting for You
150mm x 150mm
ML 08



Watching Over You
150mm x 150mm
ML 09



Carol Singing Christmas
150mm x 150mm
ML 10



Christmas Delivery
150mm x 150mm
ML 11



Happy Christmas
150mm x 150mm
ML 12



Hitchin' a Ride
150mm x 150mm
ML 13



Home for Christmas
150mm x 150mm
ML 14



Night Shift Christmas
150mm x 150mm
ML 15



Tis the Season
150mm x 150mm
ML 16



Fish Surprise
150mm x 150mm
ML 17



Fruit Delights
150mm x 150mm
ML 18



My Friend the Blackbird
150mm x 150mm
ML 19



Three Little Boats
150mm x 150mm
ML 20

All cards are blank inside and are individually cello wrapped with a white envelope.

Trade Price: £1.22 + VAT each (RRP £2.95)

MORAG LLOYDS



Under Wedgewood Sky
150mm x 150mm
ML 21



Wild at Heart
150mm x 150mm
ML 22



Family Day Out
150mm x 150mm
ML 32



Harbour Views
150mm x 150mm
ML 33



Spring
150mm x 150mm
ML 34



Watching the Races
150mm x 150mm
ML 35



Heading out to Sea
150mm x 150mm
ML 36



Clear Waters
150mm x 150mm
ML 37



King of the Castle
150mm x 150mm
ML 38



Patchwork Hills
150mm x 150mm
ML 39



Surfing
150mm x 150mm
ML 40



Two's Company
150mm x 150mm
ML 41



Perfect Views
150mm x 150mm
ML 42



A Little Piece of Heaven
150mm x 150mm
ML 43



A Riot of Colour
150mm x 150mm
ML 44



Boats and Piers
150mm x 150mm
ML 45



Evening Light
150mm x 150mm
ML 46



Meadows
150mm x 150mm
ML 47



Summer Showers
150mm x 150mm
ML 48



Emergency Services
150mm x 150mm
ML 49



Companionship
150mm x 150mm
ML 50



Wake Me in the Spring
150mm x 150mm
ML 51



Supporting Each Other
150mm x 150mm
ML 52



Oh to be as Wise as an Owl
150mm x 150mm
ML 53



Boys' Night Out
150mm x 150mm
ML 54

All cards are blank inside and are individually cello wrapped with a white envelope.

Trade Price: £1.22 + VAT each (RRP £2.95)

RAY OGDEN

Ray Ogden

Ray lives and works in Cumbria's Eden Valley between the Lakeland and Pennine fells. A former BBC TV designer, freelance illustrator and lecturer, he studied graphic design at Liverpool College of Art and the Royal College of Art. Working now primarily as a printmaker, using digital drawing programmes, he is able to blend normally disparate media in a single image. References to Ray's interest in indigenous people's art forms are usually evident in his work, along with a fascination with the relationship between illusion and realism in the drawn image.



Aosagi to Hikigaeru
177mm x 127mm
RO 01



Bear Rock
177mm x 127mm
RO 02



Crane Dance
177mm x 127mm
RO 03



River Dance
177mm x 127mm
RO 06



Kakapo Centre Stage
177mm x 127mm
RO 14



Iruka Nami
177mm x 127mm
RO 15



The Fish Riders
177mm x 127mm
RO 17



Lillith
177mm x 127mm
RO 25



The Line
177mm x 127mm
RO 26



Lost Heroes
177mm x 127mm
RO 27



Su no Tori
150mm x 150mm
RO 04



Perikan Kodachi
150mm x 150mm
RO 05



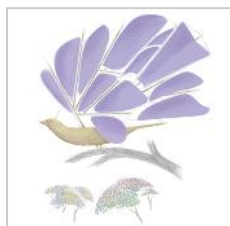
Sun Birds
150mm x 150mm
RO 07



Chiisai Niwa
150mm x 150mm
RO 09



Masquerade
150mm x 150mm
RO 13



Frigate Bird
150mm x 150mm
RO 16



The Black Swan
127mm x 177mm
RO 08



The Fisher King
127mm x 177mm
RO 10



Kurai Hane
127mm x 177mm
RO 12



Niwa no Tori
127mm x 177mm
RO 20



Swansong Nightingale
127mm x 177mm
RO 22

All cards are blank inside and are individually cello wrapped with a white envelope.

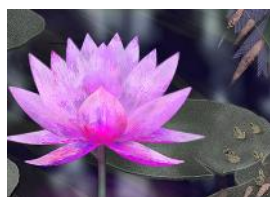
Trade Price: £1.22 + VAT each (RRP £2.95)

RAY OGDEN

Ray Ogden



L'Automne
177mm x 127mm
RO 18



Lotus
177mm x 127mm
RO 19



Koshi Tantan
177mm x 127mm
RO 21



Consortium Polaris
177mm x 127mm
RO 23



Sanctum Sanctorum
177mm x 127mm
RO 24

STUART BROCKLEHURST

Stuart Brocklehurst

Stuart studied Wildlife Illustration at Dyfed College of Art and now lives and works in Brighouse in West Yorkshire. He specialises in producing original linocut and mezzotint prints which are representational of the natural world, from sweeping landscapes to beautiful studies of individual animals. His work has been shown in galleries as far afield as Brazil and Russia.



Sprite of the Beck
127mm x 177mm
SB 01



Reflection - Avocets
127mm x 177mm
SB 02



Fresh from the Sea
127mm x 177mm
SB 05



Otter
127mm x 177mm
SB 06



Little Owl
127mm x 177mm
SB 07



Spring Sky Dance
127mm x 177mm
SB 08



Peregrine Falcon
127mm x 177mm
SB 09



Brown Trout
127mm x 177mm
SB 10



Rising Trout
127mm x 177mm
SB 11



Reed Bunting
127mm x 177mm
SB 13



Winter Owl
127mm x 177mm
SB 17



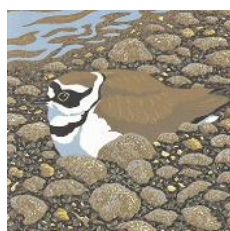
Winter Moor
127mm x 177mm
SB 18



Song of the Moors
150mm x 150mm
SB 03



The Complete Angler
150mm x 150mm
SB 04



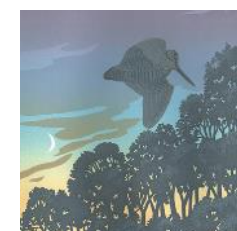
Little Ringed Plover
150mm x 150mm
SB 12



Magpie
150mm x 150mm
SB 14



Whooper Swan Family
150mm x 150mm
SB 15



Woodcock Roding
150mm x 150mm
SB 16

All cards are blank inside and are individually cello wrapped with a white envelope.

Trade Price: £1.22 + VAT each (RRP £2.95)

CAROLINE RILEY

C Riley

Caroline grew up on the North York Moors and went on to study Textiles and Fashion at Winchester. She worked in London for quite a few years before returning to Yorkshire and gradually switching to full time painting and drawing. She now works from her studio in a converted tractor shed in Commondale and is inspired by all things local, particularly trees, working in whatever medium suits the subject.



Bull
150mm x 150mm
CR 01



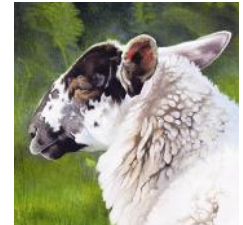
Buttercups
150mm x 150mm
CR 02



Danby Wiske Cow
150mm x 150mm
CR 03



Dougal
150mm x 150mm
CR 04



Sheep Portrait 3
150mm x 150mm
CR 05



Sheep Portrait 4
150mm x 150mm
CR 06



Leaves on Water
150mm x 150mm
CR 08



Danby Park Birches
150mm x 150mm
CR 09



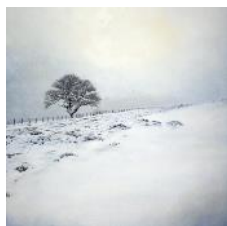
Tate Modern Birches
150mm x 150mm
CR 10



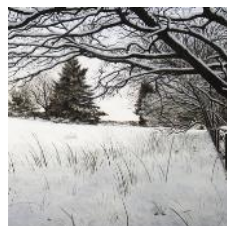
Moorland Village, Snow
150mm x 150mm
CR 11



Sun and Snow
150mm x 150mm
CR 12



Winter Hillside
150mm x 150mm
CR 13



Snow Field
150mm x 150mm
CR 14



Brown Cow
150mm x 150mm
CR 15



Light on the Water
150mm x 150mm
CR 17



Moorland Birch
210mm x 99mm
CR 16



Woodland Stream
210mm x 99mm
CR 20



Moorland Track
210mm x 99mm
CR 27



White Horse
210mm x 99mm
CR 28

All cards are blank inside and are individually cello wrapped with a white envelope.

Trade Price: £1.22 + VAT each (RRP £2.95)

CAROLINE RILEY

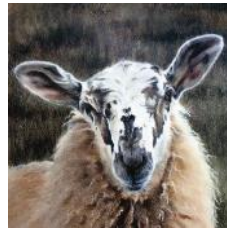
C Riley



Moor-side Birches
150mm x 150mm
CR 18



Moorland Birch 2
150mm x 150mm
CR 19



White-faced Sheep
150mm x 150mm
CR 21



Highland Cow
150mm x 150mm
CR 22



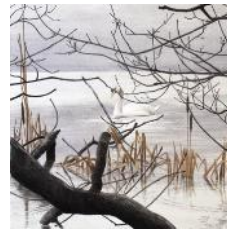
Windswept Tree
150mm x 150mm
CR 23



Goat
150mm x 150mm
CR 24



Sun on the Waves
150mm x 150mm
CR 25



Swan in the Mist
150mm x 150mm
CR 26



Red Grouse
150mm x 150mm
CR 29



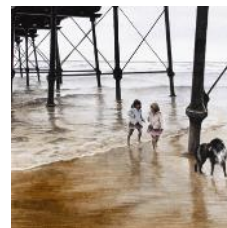
Moorland Sheep
150mm x 150mm
CR 30



Snooty Sheep
150mm x 150mm
CR 31



Lone Moorland Tree
150mm x 150mm
CR 32



Under the Pier
150mm x 150mm
CR 33



Under the Pier II
150mm x 150mm
CR 34



Morag
150mm x 150mm
CR 35



Upland Tree in Winter
150mm x 150mm
CR 36



Fresh Snow in Woodland
150mm x 150mm
CR 37



Sheep under Hawthorn
150mm x 150mm
CR 38



Moorland Rowan
150mm x 150mm
CR 39

Customer comment: "The shop's Natural Partners card selection is much talked about and apparently, according to our regulars, we have the best cards in town!" - C.H., Wales.

All cards are blank inside and are individually cello wrapped with a white envelope.

Trade Price: £1.22 + VAT each (RRP £2.95)

JENNY ULYATT

Jenny Ulyatt

Jenny lives and works in Durham City, a fantastic location for her day trips to Northumberland, the North York Moors and the Yorkshire Dales. Jenny's contemporary watercolours are created from a cocktail of sketches, photographs, memory and imagination, producing images that are full of movement, colour and life. They are inspired by the British countryside and radiate some of the happiness we feel when we are somewhere we love.



Ploughed Field
177mm x 127mm
JU 02



Woodland Edge
177mm x 127mm
JU 03



Journey to the Hills
177mm x 127mm
JU 04



Into the Bluebells
177mm x 127mm
JU 05



Sheep Fields
177mm x 127mm
JU 06



Shimmering Lake
177mm x 127mm
JU 07



Red Reeds
177mm x 127mm
JU 08



Summer Hills
177mm x 127mm
JU 09



Deer and Bluebells
177mm x 127mm
JU 10



Dandelions and Sunshine
177mm x 127mm
JU 11



Low Tide
177mm x 127mm
JU 12



Walk to the Lighthouse
177mm x 127mm
JU 13



Bay Huts
177mm x 127mm
JU 14



Storm over Lighthouse
177mm x 127mm
JU 15



Purple Moon
177mm x 127mm
JU 16



Daisy Field
127mm x 177mm
JU 01



Reindeer and Robin
127mm x 177mm
JU 17



Reindeer, Rowan and Robin
127mm x 177mm
JU 18



Spring Stag
127mm x 177mm
JU 28



Young Deer meets Robin
127mm x 177mm
JU 32

All cards are blank inside and are individually cello wrapped with a white envelope.
Trade Price: £1.22 + VAT each (RRP £2.95)

JENNY ULYATT

Jenny Ulyatt



Autumn Walk
177mm x 127mm
JU 19



Misty River
177mm x 127mm
JU 20



Purple Moorland
177mm x 127mm
JU 21



Purple Trees
177mm x 127mm
JU 22



Castle across the Bay
177mm x 127mm
JU 23



Seaside Pinks
177mm x 127mm
JU 24



Sunshine and Daffodils
177mm x 127mm
JU 26



Morning Light
177mm x 127mm
JU 27



Town in the Hills
177mm x 127mm
JU 29



Hilltop Trees
177mm x 127mm
JU 31

BEVERLEY ANN HICKS

BAH

Beverley was born in Saltburn, on the rugged North Yorkshire coast, and now lives and works in The Yorkshire Dales. Through her work she aims to create a specific atmosphere predominantly through tactile paint application, the careful balancing of composition, and the matching of colour, texture and form.



Could it be you?
150mm x 150mm
BAH 01



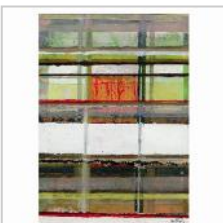
Seeds
150mm x 150mm
BAH 02



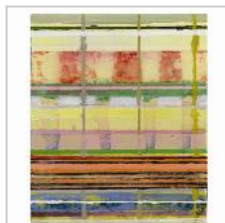
Hidden from view
150mm x 150mm
BAH 03



Australia II
150mm x 150mm
BAH 04



Bush Fire
150mm x 150mm
BAH 05



The Red Desert
150mm x 150mm
BAH 06



From Alice Springs
150mm x 150mm
BAH 07



My Dreamtime
150mm x 150mm
BAH 08

Customer comment: "By the way, the cards are just gorgeous!" - L.F., Scotland.

All cards are blank inside and are individually cello wrapped with a white envelope.
Trade Price: £1.22 + VAT each (RRP £2.95)

CHLOE BUCK

Chloe Buck

Stained glass artist Chloe Buck lives and works in Saltburn on the North Yorkshire coast. Since early childhood she has been producing decorative images for greeting cards and she continues to enjoy this alongside her glass work.



Cheetah
177mm x 127mm
CB 01



Rabbit
177mm x 127mm
CB 02



Swan
177mm x 127mm
CB 03



Whippet
177mm x 127mm
CB 12



Polar Snowman
177mm x 127mm
CB 16



Tree Bird
150mm x 150mm
CB 04



Partridge
150mm x 150mm
CB 05



Robin with Antlers
150mm x 150mm
CB 06



Black Birds
150mm x 150mm
CB 13



Leopard
150mm x 150mm
CB 14



Crowned Penguin
127mm x 177mm
CB 07



Pudding
127mm x 177mm
CB 08



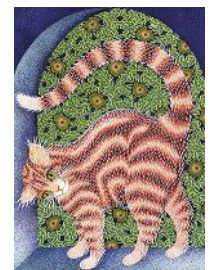
Guinea Fowl
127mm x 177mm
CB 09



Mad Cat
127mm x 177mm
CB 10



Red-legged Partridge
127mm x 177mm
CB 11



Cat Arch
127mm x 177mm
CB 15



Under the Mistletoe
177mm x 127mm
CB 17



Spiny Friends
177mm x 127mm
CB 18



Reindeer Ride
177mm x 127mm
CB 19



Dalmatian
177mm x 127mm
CB 20

All cards are blank inside and are individually cello wrapped with a white envelope.

Trade Price: £1.22 + VAT each (RRP £2.95)

CHLOE BUCK

Chloe Buck



Cranes
127mm x 177mm
CB 21



Fox in the Snow
127mm x 177mm
CB 23



Fish
127mm x 177mm
CB 27



Peacock
127mm x 177mm
CB 28



Flamingos
127mm x 177mm
CB 29



Red Bird
150mm x 150mm
CB 24



Bird and Blue Tiger
177mm x 127mm
CB 22



We Three Snow Kings
177mm x 127mm
CB 25



Snowman and Robin
177mm x 127mm
CB 26

VICKY TUCKER

Vicky Tucker

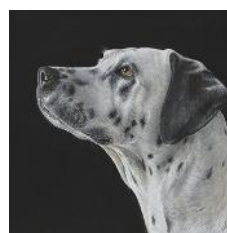
Vicky lives in a small, rural village in the North York Moors National Park and loves the outdoor lifestyle, frequently taking inspiration from the rich colours and wildlife on her doorstep. She has always had a passion for drawing and painting, initially training and working as a textile designer before returning to her grass roots of fine art. Vicky has many elements to her work, from large landscapes using big brushes, to the very finely detailed animal portraits for which she has an established reputation.



Border Collie
150mm x 150mm
VT 01



Dachshund
150mm x 150mm
VT 02



Dalmatian (Cali)
150mm x 150mm
VT 03



Black Labrador Puppy
150mm x 150mm
VT 04



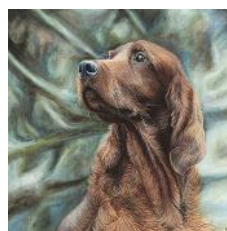
Norfolk Terrier
150mm x 150mm
VT 05



English Pointer Puppy
150mm x 150mm
VT 06



German Pointer
150mm x 150mm
VT 07



Red Setter (Aaron)
150mm x 150mm
VT 08



Springer Spaniel
150mm x 150mm
VT 09



Weimaraner (Lola)
150mm x 150mm
VT 10

All cards are blank inside and are individually cello wrapped with a white envelope.

Trade Price: £1.22 + VAT each (RRP £2.95)

More Vicky Tucker overleaf.



Whippet
150mm x 150mm
VT 11



Bulldog (Max)
150mm x 150mm
VT 12



Australian Blue Merle
150mm x 150mm
VT 13



Boston Terrier Pup
150mm x 150mm
VT 14



Jack Russell
150mm x 150mm
VT 15



Sheltie
150mm x 150mm
VT 16



White Stallion
150mm x 150mm
VT 17



Black Stallion
150mm x 150mm
VT 18



Rocky Mountain Stallion
150mm x 150mm
VT 19



Andalusian Stallion
150mm x 150mm
VT 20



Chestnut Stallion
150mm x 150mm
VT 21



Running Free
150mm x 150mm
VT 23



Rosie
150mm x 150mm
VT 26



Gypsy
150mm x 150mm
VT 27



Friends
177mm x 127mm
VT 24



Jupiter
127mm x 177mm
VT 22



Patiently Waiting
127mm x 177mm
VT 28



Woody
127mm x 177mm
VT 29



Jack Russell (Russell)
127mm x 177mm
VT 30



A Friend
177mm x 127mm
VT 25

All cards are blank inside and are individually cello wrapped with a white envelope.

Trade Price: £1.22 + VAT each (RRP £2.95)

JO SCOTT

Jo studied art and design at York College of Art and has a MA in Visual Culture from Middlesex University. Originally from East Yorkshire, Jo is now based in the Forest of Dean at her own design studio and gallery. Working mainly in watercolours for her paintings and pen and ink and digital for her illustrative work, Jo paints mainly, though not exclusively, dogs and her aim is to capture the 'spark' that every animal has and to transfer that character to paper for all to enjoy.



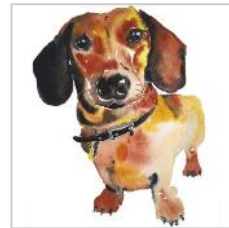
Buster
150mm x 150mm
JS 01



Ruby
150mm x 150mm
JS 02



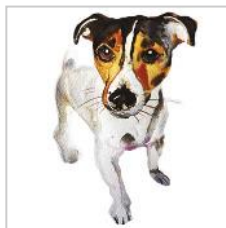
Molly
150mm x 150mm
JS 04



Montgomery
150mm x 150mm
JS 05



Charlie
150mm x 150mm
JS 06



Ralphie
150mm x 150mm
JS 07



Angus
150mm x 150mm
JS 08



Bertie
150mm x 150mm
JS 09



Rosie at Summerlodge
150mm x 150mm
JS 12



Brody
150mm x 150mm
JS 13



Bella
150mm x 150mm
JS 14



Bertie
150mm x 150mm
JS 16



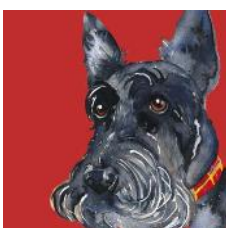
Laurence
150mm x 150mm
JS 17



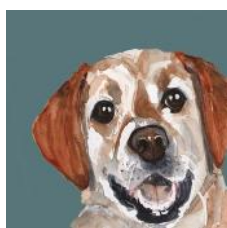
Billy
150mm x 150mm
JS 18



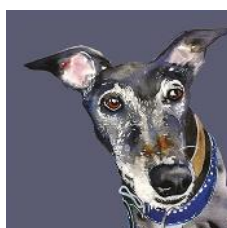
Julie
150mm x 150mm
JS 19



Angus
150mm x 150mm
JS 20



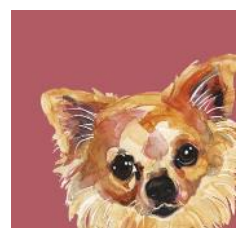
Molly
150mm x 150mm
JS 21



Benji
150mm x 150mm
JS 22



Zion
150mm x 150mm
JS 24



Romeo
150mm x 150mm
JS 25

All cards are blank inside and are individually cello wrapped with a white envelope.

Trade Price: £1.22 + VAT each (RRP £2.95)

More Jo Scott overleaf.



Finn
150mm x 150mm
JS 26



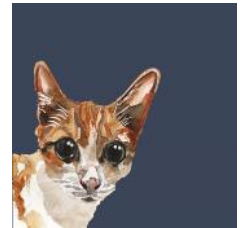
Skye
150mm x 150mm
JS 27



Tilly
150mm x 150mm
JS 29



Tippex
150mm x 150mm
JS 31



Fitzgerald
150mm x 150mm
JS 33



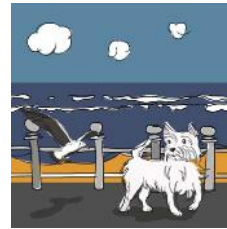
Ruby
150mm x 150mm
JS 35



Dolly
150mm x 150mm
JS 37



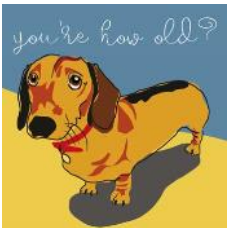
Glenn
150mm x 150mm
JS 38



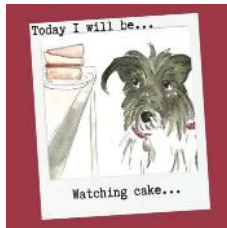
Seagull & Westie
150mm x 150mm
JS 59



Dog & Ball
150mm x 150mm
JS 60



You're how old?
150mm x 150mm
JS 63



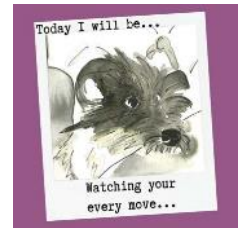
Watching Cake
150mm x 150mm
JS 64



Self Control
150mm x 150mm
JS 65



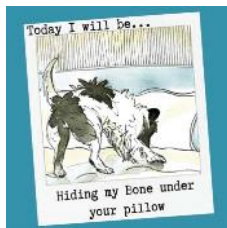
Fetching Sticks
150mm x 150mm
JS 66



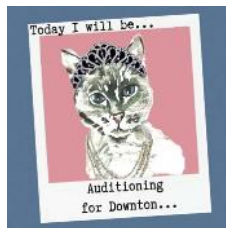
Watching Your Every Move
150mm x 150mm
JS 67



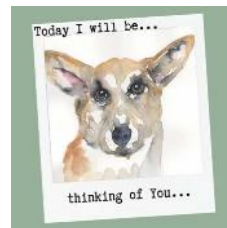
Having a Duvet Day
150mm x 150mm
JS 68



Hiding my bone...
150mm x 150mm
JS 69



Auditioning for Downton
150mm x 150mm
JS 70



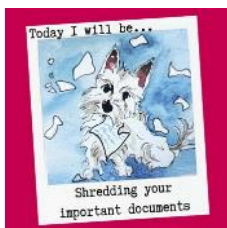
Thinking of You
150mm x 150mm
JS 71



On Cat Watch
150mm x 150mm
JS 72



Eating your Breakfast
150mm x 150mm
JS 73



Shredding documents
150mm x 150mm
JS 74



Mass Destruction
150mm x 150mm
JS 75



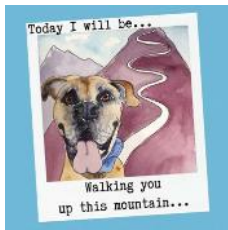
Helping in the Office
150mm x 150mm
JS 76



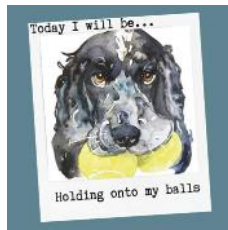
Wearing the cone of shame
150mm x 150mm
JS 77

All cards are blank inside and are individually cello wrapped with a white envelope.

Trade Price: £1.22 + VAT each (RRP £2.95)



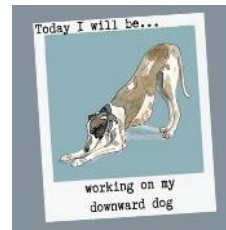
Walking you up...
150mm x 150mm
JS 79



Holding onto my balls
150mm x 150mm
JS 80



Helping you declutter
150mm x 150mm
JS 82



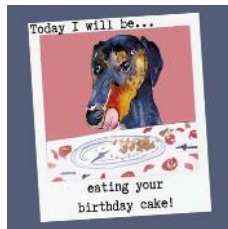
Downward dog
150mm x 150mm
JS 83



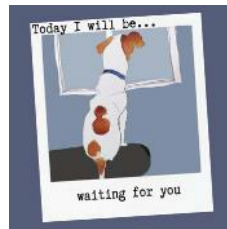
Every mouthful
150mm x 150mm
JS 84



Drooling on tablecloth
150mm x 150mm
JS 85



Eating birthday cake
150mm x 150mm
JS 86



Waiting for you
150mm x 150mm
JS 87



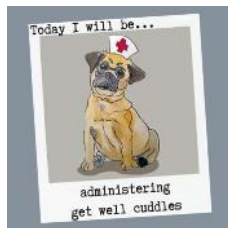
Innocent until proven guilty
150mm x 150mm
JS 88



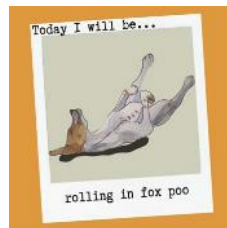
Thinking of You
150mm x 150mm
JS 90



Settling into new home
150mm x 150mm
JS 91



Administering cuddles
150mm x 150mm
JS 92



Rolling in Fox Poo
150mm x 150mm
JS 93



A Jack Russell...
150mm x 150mm
JS 94



2 Teething Pups
150mm x 150mm
JS 95



3 French Hounds
150mm x 150mm
JS 96



4 Calling Bulls
150mm x 150mm
JS 97



5 Golden Labs
150mm x 150mm
JS 98



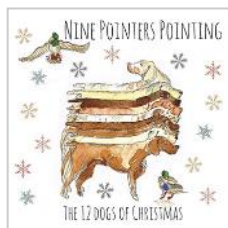
6 Greyhounds...
150mm x 150mm
JS 99



7 Shih-Tzus Swimming
150mm x 150mm
JS 100



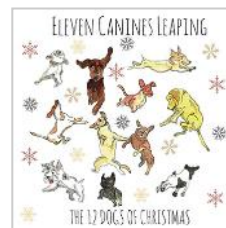
8 Mutts-A-Munching
150mm x 150mm
JS 101



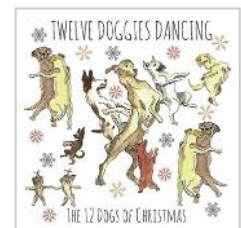
9 Pointers Pointing
150mm x 150mm
JS 102



10 Dachshunds...
150mm x 150mm
JS 103



11 Canines Leaping
150mm x 150mm
JS 104



12 Doggies Dancing
150mm x 150mm
JS 105

All cards are blank inside and are individually cello wrapped with a white envelope.

Trade Price: £1.22 + VAT each (RRP £2.95)

FI POWERS

FiPowers.

After gaining an honours degree in illustration, Fi has enjoyed a varied and successful career as an illustrator and designer for many clients, with her work featured in books, magazines and on items of giftware. Her work is inspired by her love of Scandinavian art and the colour and form of mid-century design, to which she adds her own twist of pattern and texture.



Whippets
150mm x 150mm
FP 01



Cats
150mm x 150mm
FP 02



Hares
150mm x 150mm
FP 03



Squirrels
150mm x 150mm
FP 04



Foxy Fox
150mm x 150mm
FP 05



Woodpeckers
150mm x 150mm
FP 06



Tweet Tweet
150mm x 150mm
FP 07



Scandi-horse
150mm x 150mm
FP 08



Peacock
150mm x 150mm
FP 09



Scandi-mountains
150mm x 150mm
FP 10



Allotment
150mm x 150mm
FP 11



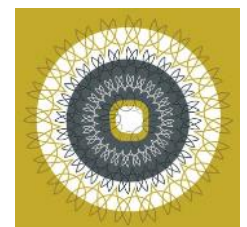
Balloons
150mm x 150mm
FP 12



Dutch Houses
150mm x 150mm
FP 13



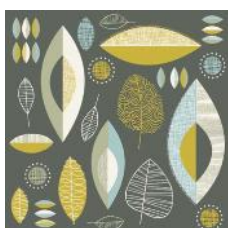
Town
150mm x 150mm
FP 14



Spiro-bloom
150mm x 150mm
FP 15



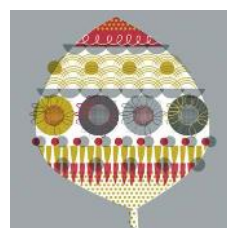
Spiro-cycles
150mm x 150mm
FP 16



Mid-century Leaves
150mm x 150mm
FP 17



Green Leaf
150mm x 150mm
FP 18



Red Leaf
150mm x 150mm
FP 19



Retro Tech
150mm x 150mm
FP 20



Fox in Woods
150mm x 150mm
FP 21

All cards are blank inside and are individually cello wrapped with a white envelope.

Trade Price: £1.22 + VAT each (RRP £2.95)

FI POWERS

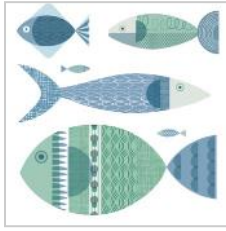
FiPowers.



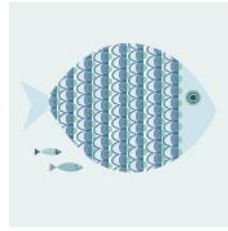
Cacti
150mm x 150mm
FP 22



Scandi-beach huts
150mm x 150mm
FP 23



Scandi-fish
150mm x 150mm
FP 24



Lit & Lge Scandi-fish
150mm x 150mm
FP 25



Pretty Peacock
150mm x 150mm
FP 26



Cat in a Tree
150mm x 150mm
FP 27



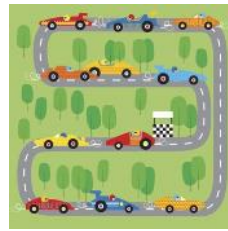
Happy Starfish
150mm x 150mm
FP 28



Two Trains
150mm x 150mm
FP 29



Wheels in the Park
150mm x 150mm
FP 30



Race Track
150mm x 150mm
FP 31



Adventure in Space
150mm x 150mm
FP 32



Cheeky Monkeys
150mm x 150mm
FP 33

JAMES MORGAN WILLIAMS

James has worked in education, set design and illustration, as well as fulfilling a variety of commissions, from portraiture to mural work, as a freelance artist. He spent several years living and working in Saltburn, on the North Yorkshire coast, but work commitments have now required a move south to Southampton. James' art reflects his interest in the drama of the physical, from storms at sea to the human figure.



Sunlight, grass blades, shade
177mm x 127mm
JMW 02



Breaking Wave
177mm x 127mm
JMW 03



Lone Gull
177mm x 127mm
JMW 04



On Crows' Wings
177mm x 127mm
JMW 05



Storm from the Sea
177mm x 127mm
JMW 09



Flurry of Gulls
177mm x 127mm
JMW 10



Crow
177mm x 127mm
JMW 11



Into the Light
177mm x 127mm
JMW 12



Gull beneath Huntcliff
127mm x 177mm
JMW 08



Green Man
127mm x 177mm
JMW 13

All cards are blank inside and are individually cello wrapped with a white envelope.

Trade Price: £1.22 + VAT each (RRP £2.95)

MADDY BENNETT

M Bennett

Yorkshire born and bred, Maddy is now settled in Northumberland. The beauty of the natural environment in both these counties inspires much of her work. With diplomas in art and illustration, she continues to explore a variety of styles, but is particularly focused on lino cutting.



Dandelion Clock
177mm x 127mm
MAD 01



Dandelions
177mm x 127mm
MAD 02



Pylons
177mm x 127mm
MAD 03



Camper Van
177mm x 127mm
MAD 04



Dog Walking
177mm x 127mm
MAD 05



Fox in the Moonlight
177mm x 127mm
MAD 06



Fish
177mm x 127mm
MAD 07



Turquoise Fish
177mm x 127mm
MAD 08



Moon Gazing Hare
127mm x 177mm
MAD 09



Owl
127mm x 177mm
MAD 10



Highland Stag
127mm x 177mm
MAD 11



Misty Trees
127mm x 177mm
MAD 12



Dragon
127mm x 177mm
MAD 13



Cocktail
127mm x 177mm
MAD 14



Adventure Awaits
127mm x 177mm
MAD 15



Something Beautiful
127mm x 177mm
MAD 16



Bird in a Tree
150mm x 150mm
MAD 17



Peacock
150mm x 150mm
MAD 18



Flamingo
150mm x 150mm
MAD 19



Zebra
150mm x 150mm
MAD 20



Bunnies
150mm x 150mm
MAD 21



Cat by a Lake
150mm x 150mm
MAD 22



Jellyfish
150mm x 150mm
MAD 23

All cards are blank inside and are individually cello wrapped with a white envelope.

Trade Price: £1.22 + VAT each (RRP £2.95)

LILY BATTESON

Lily grew up in England's Peak District, where she came to love the beauty and drama of nature. Now settled in Lancashire and using her passion for colour and texture, she paints nature and the animals she sees in her everyday life, producing her trademark stylised and quirky paintings.



Cheeky Chops
150mm x 150mm
LB 02



Happiness
150mm x 150mm
LB 04



Hamish
150mm x 150mm
LB 05



Priscilla
150mm x 150mm
LB 07



Christmas Hattie
150mm x 150mm
LB 09



Christmas Snow
150mm x 150mm
LB 10



Rudolph
150mm x 150mm
LB 11



Love Blossoms
150mm x 150mm
LB 15



Bee Happy
150mm x 150mm
LB 19



The Clothes Line
177mm x 127mm
LB 20



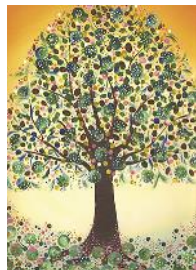
Girls' Night Out
177mm x 127mm
LB 21



Captivated
127mm x 177mm
LB 01



Jemima
127mm x 177mm
LB 03



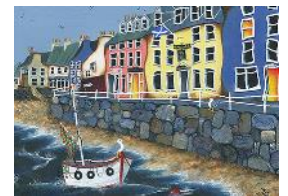
The Wishing Tree
127mm x 177mm
LB 16



Tree of Hearts
127mm x 177mm
LB 17



With Love
127mm x 177mm
LB 18



Tobermory
177mm x 127mm
LB 22



Like Father Like Son
177mm x 127mm
LB 06



Watching you
177mm x 127mm
LB 08



Santa's Little Helpers
177mm x 127mm
LB 12



Beach Huts
177mm x 127mm
LB 13



Windy Harbour
177mm x 127mm
LB 14

Customer comment: "I sell your cards every day!" - H.G., Scotland.

All cards are blank inside and are individually cello wrapped with a white envelope.

Trade Price: £1.22 + VAT each (RRP £2.95)

FREYA HORSLEY



Originally from the South West of England, Freya has been living in Yorkshire since graduating with a First Class honours degree in Fine Art. She has developed her painting practice, drawing on the landscape around her as well as her travels further afield and attempts to capture in paint the intangibility of the changes which rain, mist, sunlight, cloud, snow and wind bring to the face of the land.



Settling Hours
210mm x 99mm
FH 01



Drench
210mm x 99mm
FH 02



Cover
210mm x 99mm
FH 03



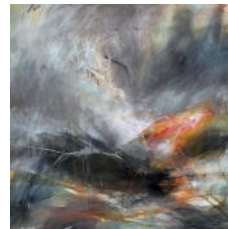
Winter Words
210mm x 99mm
FH 04



Lifting
210mm x 99mm
FH 05



Scroll
210mm x 99mm
FH 06



Brace
150mm x 150mm
FH 07



Cloud Song
150mm x 150mm
FH 08



Lark
150mm x 150mm
FH 09



Plunge
150mm x 150mm
FH 10



Split
150mm x 150mm
FH 11



Murmuring
150mm x 150mm
FH 12

SARAH CAMPBELL



Sarah lives and works in County Durham, producing hand-drawn illustrations which are enhanced with the strategic use of colour. Her work evokes nostalgic memories of happy childhood days and is inspired by nature and the whimsical imaginings of children, a love of books and poetry and anything else that takes her off on a flight of fancy.



Christmas Tree Girl
150mm x 150mm
SJC 01



Snowman
150mm x 150mm
SJC 02



Hot Chocolate
150mm x 150mm
SJC 03



Let it Snow
150mm x 150mm
SJC 04



Star Light Star Bright
150mm x 150mm
SJC 05



Home Sweet Home
150mm x 150mm
SJC 06

All cards are blank inside and are individually cello wrapped with a white envelope.

Trade Price: £1.22 + VAT each (RRP £2.95)

SARAH CAMPBELL

Sarah Campbell



Bring Me Sunshine
150mm x 150mm
SJC 07



Sail Away
150mm x 150mm
SJC 08



Your Garden
150mm x 150mm
SJC 09



Me and My Dragon
150mm x 150mm
SJC 10



Robin
150mm x 150mm
SJC 11



Fox
150mm x 150mm
SJC 12

STEVE & SUE GRIFFITHS

Steve Griffiths *Sue Griffiths*

Husband and wife, Steve and Sue Griffiths, were both born in Widnes in Lancashire and have had a common interest in photography from an early age. Steve had a photography business in the north west, making good use of his years of experience of landscape and street photography. After moving over the Pennines to settle in Guisborough in North Yorkshire the couple launched a new business venture, *Sue & Steve Photography*, in 2009.



Reflections on Art
127mm x 177mm
SSG 06



Reflections de San Marco
127mm x 177mm
SSG 07



Guarded Reflections
127mm x 177mm
SSG 08



60007 Sir Nigel Gresley
127mm x 177mm
SSG 12



75029 Leaving Station
127mm x 177mm
SSG 13



69023 Getting Under Way
177mm x 127mm
SSG 09



Cock o' The North
177mm x 127mm
SSG 10



Approaching Station
177mm x 127mm
SSG 11



Over the Crossing
177mm x 127mm
SSG 14



1501 Pulling Coaches
177mm x 127mm
SSG 16



Time for a Chat
177mm x 127mm
SSG 17



Full Steam Ahead
177mm x 127mm
SSG 18



Pulling Away
177mm x 127mm
SSG 19



Royal Scot Blowing Off Steam
177mm x 127mm
SSG 20

All cards are blank inside and are individually cello wrapped with a white envelope.
Trade Price: £1.22 + VAT each (RRP £2.95)

CAMASSIA BRUCE



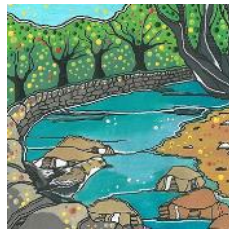
Camassia is an artist based in Scotland, where she studied Fine Art at Duncan of Jordanstone College of Art and Design in Dundee. She is fascinated by lines, indicated by strong linear references within her painted works, which typically depict aspects of the natural world.



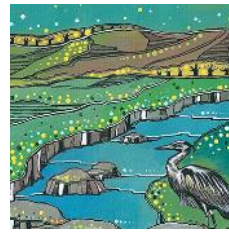
Buzzing
150mm x 150mm
CAM 01



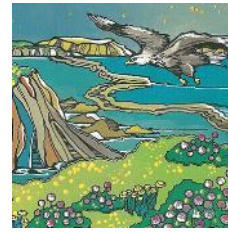
Camouflage
150mm x 150mm
CAM 02



Dipping by the Rocks
150mm x 150mm
CAM 03



Keeping an Eye Out
150mm x 150mm
CAM 04



Soaring
150mm x 150mm
CAM 05



Standing on one leg
150mm x 150mm
CAM 06



The StoneWall
150mm x 150mm
CAM 07



The Sweet Meadow
150mm x 150mm
CAM 08



Silhouettes
150mm x 150mm
CAM 09



The Fire is Burning
150mm x 150mm
CAM 10



The Golden Geese
150mm x 150mm
CAM 11

ELIZABETH MEDLEY



Elizabeth grew up in North Yorkshire and chose to pursue her passion for art, textiles and all things creative by studying Textiles and Surface Design at Cleveland College of Art and Design in Hartlepool. She firmly believes that inspiration can be found anywhere and everywhere and her work is often abstract, focusing on her love for bright colours and maximal designs.



Happy Birthday
150mm x 150mm
EM 01



Happy Birthday
150mm x 150mm
EM 02



Happy Birthday
150mm x 150mm
EM 03



Your Birthday
150mm x 150mm
EM 04



Brilliant Birthday
150mm x 150mm
EM 05



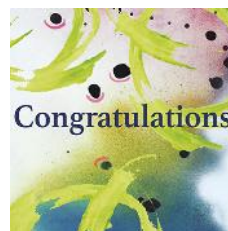
Fabulous Day
150mm x 150mm
EM 06



Thank You
150mm x 150mm
EM 07



You're Awesome
150mm x 150mm
EM 08



Congratulations
150mm x 150mm
EM 09



Well Done
150mm x 150mm
EM 10

All cards are blank inside and are individually cello wrapped with a white envelope.

Trade Price: £1.22 + VAT each (RRP £2.95)

ANDREW CHEETHAM

Andrew Cheetham

Andrew was born in Heywood, Manchester, in 1971 and studied at Liverpool John Moores University and Central St. Martin's College of Art. He now lives and works in Scarborough, North Yorkshire, where he has a studio in one of the baiting sheds on the harbour side, his work depicting the grandeur and dramatic beauty of the North Yorkshire moors and coast.



Sweeping clouds
177mm x 127mm
AC 09



North Landing
177mm x 127mm
AC 10



Running tide
177mm x 127mm
AC 11



Sudden snow
177mm x 127mm
AC 14



Sun breaking through
177mm x 127mm
AC 15



Break
127mm x 177mm
AC 01



Pots
127mm x 177mm
AC 02



Old Ralph
127mm x 177mm
AC 03



Trods
127mm x 177mm
AC 04

MICHAEL HAMPSON

MH

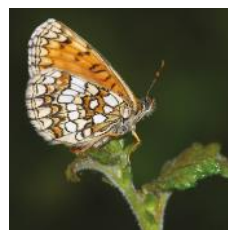
Mike was born in Whitby in 1970 and now works in Saltburn, on the North Yorkshire Coast. He has been interested in nature from an early age and has been particularly captivated by the beauty of butterflies and moths, something which he now strives to convey through his photography.



Dark Green Fritillary
150mm x 150mm
MH 01



Large Skipper
150mm x 150mm
MH 02



Heath Fritillary
150mm x 150mm
MH 03



Peacock
150mm x 150mm
MH 04



Silver-studded Blue
150mm x 150mm
MH 05



Small Tortoiseshell
150mm x 150mm
MH 06



Marbled White
150mm x 150mm
MH 07



White Admiral
150mm x 150mm
MH 08



Large Blue
150mm x 150mm
MH 11



Red Admiral
150mm x 150mm
MH 13

All cards are blank inside and are individually cello wrapped with a white envelope.

Trade Price: £1.22 + VAT each (RRP £2.95)

MARK BRAITHWAITE



Born and raised in York, Mark began his artistic career as a pavement artist on the steps of York Minster. Returning to his home town after University, Mark opened The Braithwaite Gallery in the centre of the city. He has been a cover artist for Artist & Illustrator magazine and has twice been a regimental artist for the British Army. His work now hangs in private, public and corporate collections around the world.



Dances with the Daffodils
177mm x 127mm
MB 01



Dress Rehearsal
177mm x 127mm
MB 02



Flutterbye
177mm x 127mm
MB 03



Putting Her Ducks in a Row
177mm x 127mm
MB 04



Madame Butterfly
177mm x 127mm
MB 05



Lipstick
177mm x 127mm
MB 06



Bawoons!
177mm x 127mm
MB 07



They Won't Miss One More...
177mm x 127mm
MB 08



Hop It!
177mm x 127mm
MB 23



The Wheels on the Bus
177mm x 127mm
MB 24



A Big Kiss For...
127mm x 177mm
MB 09



Nice Weather for Ducks
127mm x 177mm
MB 10



Bubble Trouble
127mm x 177mm
MB 11



Cat's Cradle
127mm x 177mm
MB 12



One O'clock, Two O'clock
127mm x 177mm
MB 13



Puppy Love
127mm x 177mm
MB 14



Handbags and Glad Rags
127mm x 177mm
MB 15



Twinkle Fairy
127mm x 177mm
MB 16



Little Cracker
127mm x 177mm
MB 17



Mistletoe Kisses
127mm x 177mm
MB 18



On Me Head Son!
127mm x 177mm
MB 19



Pop!
127mm x 177mm
MB 20

All cards are blank inside and are individually cello wrapped with a white envelope.

Trade Price: £1.22 + VAT each (RRP £2.95)

MARK BRAITHWAITE



Slugs and Snails
127mm x 177mm
MB 21



One For the Pot
127mm x 177mm
MB 22



Hannah
127mm x 177mm
MB 25



Hannah in Red Tutu
127mm x 177mm
MB 26



Alice in Red
127mm x 177mm
MB 27



Danielle in Red
127mm x 177mm
MB 28



Danielle
127mm x 177mm
MB 29



Liam and Zoe
127mm x 177mm
MB 33



Liam and Zoe 2
127mm x 177mm
MB 34



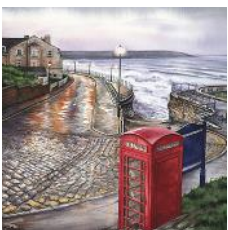
Danielle Getting Ready
177mm x 127mm
MB 30



Danielle Getting Ready 2
177mm x 127mm
MB 31



Danielle Stretching
177mm x 127mm
MB 32



After the Storm
150mm x 150mm
MB 35



Between the Showers
150mm x 150mm
MB 36



London Calling
150mm x 150mm
MB 37



Chelsea Pensioners
150mm x 150mm
MB 38



Chorus Line
150mm x 150mm
MB 39



Out to Pasture
150mm x 150mm
MB 40



First Snow of Winter
150mm x 150mm
MB 41



Lost Connection
150mm x 150mm
MB 42



Sleepy Hollow
150mm x 150mm
MB 43



Summoned by Bells
150mm x 150mm
MB 44

All cards are blank inside and are individually cello wrapped with a white envelope.

Trade Price: £1.22 + VAT each (RRP £2.95)

SABINA KOVACHEVA

Hand

Sabina is originally from Bulgaria, but has spent more than 20 years living and working in England's East Midlands. She has an eclectic professional background spanning scientific research, fashion retail and buying and, currently, running her own creative business. She is a self-taught artist and as such she draws from the heart, making her designs honest and unique. She translates her love for nature, fashion and modern design into hand-drawn illustrations where traditional and digital techniques are mixed, making her designs fresh and modern with a contemporary feel.



Rose
150mm x 150mm
SK 01



Birds I
150mm x 150mm
SK 02



Birds II
150mm x 150mm
SK 03



Bird
150mm x 150mm
SK 04



Butterfly
150mm x 150mm
SK 05



Butterflies
150mm x 150mm
SK 06



Meadow
150mm x 150mm
SK 07



Dragonflies
150mm x 150mm
SK 08



Heron
150mm x 150mm
SK 09



Kingfisher
150mm x 150mm
SK 10



Goldfinch
150mm x 150mm
SK 11



Long-tailed Tit
150mm x 150mm
SK 12



Hawfinch
150mm x 150mm
SK 13



Blue Tit
150mm x 150mm
SK 14



Coal Tits
150mm x 150mm
SK 15



Thank You
150mm x 150mm
SK 16



Feather
150mm x 150mm
SK 17



Japanese Cranes
150mm x 150mm
SK 18



Wedding
150mm x 150mm
SK 19



Anniversary
150mm x 150mm
SK 20



Long-tailed Tits
150mm x 150mm
SK 21



Waxwings
150mm x 150mm
SK 22



New Baby
150mm x 150mm
SK 23



Linnets
150mm x 150mm
SK 24



Sympathy
150mm x 150mm
SK 25



30th Birthday
150mm x 150mm
SK 26

All cards are blank inside and are individually cello wrapped with a green envelope.

Trade Price: £1.22 + VAT each (RRP £2.95)



40th Birthday
150mm x 150mm
SK 27



50th Birthday
150mm x 150mm
SK 28



60th Birthday
150mm x 150mm
SK 29



70th Birthday
150mm x 150mm
SK 30



80th Birthday
150mm x 150mm
SK 31



Friend
150mm x 150mm
SK 32



Coal Tit
150mm x 150mm
SK 33



Chaffinches
150mm x 150mm
SK 34



Flamingo
150mm x 150mm
SK 35



Barn Owl
150mm x 150mm
SK 36



Pheasant
150mm x 150mm
SK 37



Pied Wagtails
150mm x 150mm
SK 38



Red-legged Partridges
150mm x 150mm
SK 39



Wrens
150mm x 150mm
SK 40



Ladybirds
150mm x 150mm
SK 41



Bees with Flowers
150mm x 150mm
SK 42



Butterflies
150mm x 150mm
SK 43



Swing
150mm x 150mm
SK 44



Bee
150mm x 150mm
SK 45



Swan
150mm x 150mm
SK 46



Fishes
150mm x 150mm
SK 47



Bouquet
150mm x 150mm
SK 48



Lovebirds
150mm x 150mm
SK 49



Moving Ladybirds
150mm x 150mm
SK 50



Bee with Flowers
150mm x 150mm
SK 51



Flowers
150mm x 150mm
SK 52



Butterflies
150mm x 150mm
SK 53



Bouquet for Mum
150mm x 150mm
SK 54



Love Bugs
150mm x 150mm
SK 55



Bee Mine
150mm x 150mm
SK 56

All cards are blank inside and are individually cello wrapped with a green envelope.
Trade Price: £1.22 + VAT each (RRP £2.95)

PHILIPPA KIRBY

Philippa Kirby

Philippa lives near Bedale in North Yorkshire with her successful racehorse trainer husband, Philip Kirby and their two pony-mad daughters, meaning that horses are a way of life for the family. Competing on and judging horses at top level has given Philippa a keen eye for capturing the correct detail, individualism and character when painting the difficult subject of horses. Her original works are now in private collections throughout the UK and beyond, including that of His Majesty the King.



Champions Meet
177mm x 127mm
PK 04



Frankel and Jockey
177mm x 127mm
PK 05



Free Spirit
177mm x 127mm
PK 06



White Horses
177mm x 127mm
PK 09



Trio
177mm x 127mm
PK 11



Kauto Star
127mm x 177mm
PK 01



Desert Orchid
127mm x 177mm
PK 02



Frankel
127mm x 177mm
PK 03



Snow Fairy
127mm x 177mm
PK 07



Workforce
127mm x 177mm
PK 08



Sprinter Sacre
127mm x 177mm
PK 10



Lady Buttons
127mm x 177mm
PK 12

NEIL ALDRIDGE

Neil Aldridge

Neil is an award-winning photographer, author and wildlife guide. Born in the UK, he grew up in Africa before returning to his Yorkshire roots. Photography has been in his family for generations and Neil has blended his skills with a camera with a passion for the wild world. His dedication to promoting awareness of conservation issues through his photography has gained him recognition worldwide and in 2014 he was named European Wildlife Photographer of the Year.



Which Way?
177mm x 127mm
NA 01



Eye of a Hunter
177mm x 127mm
NA 04



Seaside Greetings
177mm x 127mm
NA 08



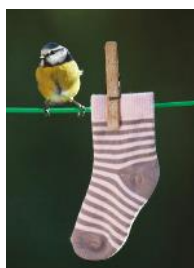
Cliff-top Majesty
177mm x 127mm
NA 10



Whatever life throws at you...
177mm x 127mm
NA 22



First Arrival
127mm x 177mm
NA 02



Out to Dry
127mm x 177mm
NA 03



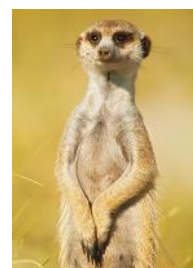
Woodland Jewel
127mm x 177mm
NA 05



Dinner Time!
127mm x 177mm
NA 07



Clown of the Sea
127mm x 177mm
NA 09



On Alert
127mm x 177mm
NA 13



My Hero!
127mm x 177mm
NA 20

All cards are blank inside and are individually cello wrapped with a white envelope.

Trade Price: £1.22 + VAT each (RRP £2.95)

ANDREW MIDGLEY



Andrew holds a Masters Degree in landscape photography and lectured on the subject in colleges for many years. As a professional landscape photographer, he has worked extensively with the Peak District National Park and the Norfolk Broads authorities and also with publishers on a variety of major book projects. Over the years, he has received no less than six Awards from the Landscape Photographer of the Year competition. Andrew lives on the coast in Norfolk and loves the sublime qualities of the countryside and shoreline.



Sand Dune Sunset
177mm x 127mm
AMI 01



Seal Pups in the Waves
177mm x 127mm
AMI 02



Moonrise over Moorings
177mm x 127mm
AMI 03



Claimed by the Marshes
177mm x 127mm
AMI 04



No Longer Seaworthy
177mm x 127mm
AMI 05



Colourful Boat
177mm x 127mm
AMI 06



Tranquil Blue Mooring
177mm x 127mm
AMI 07



Dusk on the Shoreline
177mm x 127mm
AMI 08



Dawn over the Inlet
177mm x 127mm
AMI 09



High and Dry
177mm x 127mm
AMI 10



Saltmarsh Sea Lavender
177mm x 127mm
AMI 11



At the Water's Edge
177mm x 127mm
AMI 12



Dusk over Hunstanton
177mm x 127mm
AMI 13



Reflected Reedbed
177mm x 127mm
AMI 14



Storm Clouds Gathering
177mm x 127mm
AMI 15



Over Fields to Lighthouse
177mm x 127mm
AMI 16



Path through Bluebells
177mm x 127mm
AMI 17



The Avenue
177mm x 127mm
AMI 18



River Mist
177mm x 127mm
AMI 19



Sunrise behind Trees
177mm x 127mm
AMI 20



Lone Tree
150mm x 150mm
AMI 21



Ancient Roots
177mm x 127mm
AMI 22



Sun on the Slopes
127mm x 177mm
AMI 23



Valley Mist
127mm x 177mm
AMI 24

All cards are blank inside and are individually cello wrapped with a white envelope.
Trade Price: £1.22 + VAT each (RRP £2.95)

The Nottingham-based artist behind Woolly Mammoth Media has painted, drawn, and created art for as long as he can remember and often gave his friends and family homemade greetings cards. After a firm nudge from his close peers, he decided to create artworks to sell, leading to the birth of the business.



Gin and Tonic
127mm x 177mm
WMM 01



Champagne Flutes
127mm x 177mm
WMM 02



Hot Chocolate
127mm x 177mm
WMM 03



Mojito
127mm x 177mm
WMM 04



Pink Gin
127mm x 177mm
WMM 05



Sex on the Beach
127mm x 177mm
WMM 06



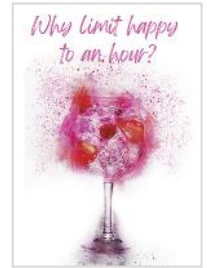
Whisky
127mm x 177mm
WMM 07



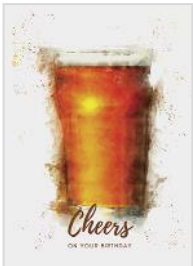
Pornstar Martini
127mm x 177mm
WMM 08



When Life gives Lemons
127mm x 177mm
WMM 09



Why Limit Happy?
127mm x 177mm
WMM 10



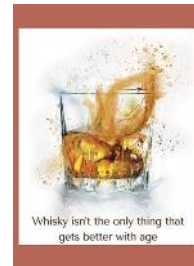
Cheers
127mm x 177mm
WMM 11



Keep Your Gin Up
127mm x 177mm
WMM 12



Cocktail O'Clock
127mm x 177mm
WMM 13



Better with Age
127mm x 177mm
WMM 14



Celebrate in Style
127mm x 177mm
WMM 15



Congratulations
127mm x 177mm
WMM 16



I'm not Old
127mm x 177mm
WMM 17



Better with Wine
127mm x 177mm
WMM 18



A Lot Like Cocktails
127mm x 177mm
WMM 20



Chin Chin
127mm x 177mm
WMM 21



Coffee
150mm x 150mm
WMM 19

All cards are blank inside and are individually cello wrapped with a white envelope.

Trade Price: £1.22 + VAT each (RRP £2.95)

Further Information

Ordering:

Please list the card codes and quantities (**in multiples of 6**) that you require and either email your order to joe@naturalpartnersart.co.uk or post it to:

**Natural Partners Limited,
33, Church Howle Crescent,
Marske-by-Sea,
Redcar, North Yorkshire,
TS11 7EJ.**

Alternatively, please call **07714 768956**.

Trade customers can register and log in to place orders via our website at www.naturalpartnersart.co.uk - this is the best way to access our full range of products.

Cards are supplied in multiples of 6 per design with the minimum trade order being 48 cards (i.e. 8 packs of 6). Postage and packaging is charged at £10 + VAT on UK orders under £150 (excluding VAT) and is free of charge on higher value orders. Overseas customers please email joe@naturalpartnersart.co.uk to obtain a delivery quotation.

Delivery:

Cards will be sent securely packaged, generally by courier, direct from the printer. Please allow up to 15 working days from acknowledgement of your order for delivery.

Invoicing:

An invoice will normally be sent to customers on dispatch of ordered goods. Payment terms are 30 days from receipt of invoice and all goods remain the property of Natural Partners Limited until paid for in full. On first orders and orders over £500 we may require customers to make payment before goods are dispatched.

Customer Service:

Customers wishing to contact us about any aspect of their order can email joe@naturalpartnersart.co.uk or telephone **07714 768956**. In the unlikely event of there being damaged, missing or incorrect items in an order on delivery, this should be reported to us as soon as possible so that the problem can be rectified.

Other Products:

We produce an extensive range of quality fine art prints reproducing original works by several of the artists featured in this catalogue. We are also planning to introduce a variety of items of giftware featuring our artists' work. Full details of these and the latest information about our frequent new greeting card releases are available on our website - simply register as a trade visitor at www.naturalpartnersart.co.uk



www.naturalpartnersart.co.uk

All images © the artists or their estates.

Published 2024 by Natural Partners Limited (registered in England no. 3829599).



Natural
Partners Art

www.naturalpartnersart.co.uk

