



*Spring / Summer '25
Collection*



LADIES | HERITAGE COLLECTION | CHILDREN



Enjoy the simple pleasures, whatever the weather...

Style led weatherproof clothing for daily life and weekend adventures, whatever the weather.

We believe that you don't need to sacrifice style for practicality. Each of our coats and jackets are as much at home on the high street or at the school gates as they are on a long beach walk in coastal drizzle.

Ready and waiting for any weather that you encounter in daily life, everyday adventures and weekend escapes.

live simple. live happy



Pippa

Shoreline Waterproof Coat | Recycled Outer
5000 WP | 5000 BR
Colours: Raspberry | Coconut | Soft Denim
Sizes: 8-20



Willow

Shoreline Waterproof Jacket | Recycled Outer
5000 WP | 5000 BR
Colours: Soft Teal | Pink
Size 8-20



Pippa

Pink



Willow

● Azure Blue



Annika

Polyester Waterproof Coat
5000 WP | 5000 BR
Colours: Cream | Deep Indigo
Size 8-20



Lucy

Rubberised Waterproof Jacket
3000 WP
Colours: Sugar Coral | Coconut | Soft Sage
Size 8-20



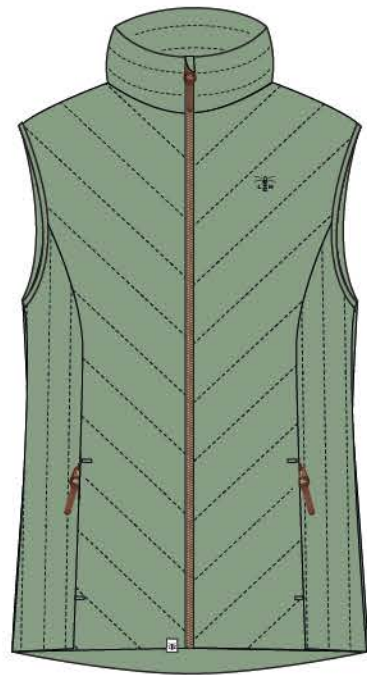
Beachcomber II

Polyester Waterproof Jacket | Soft Jersey Lining
3000 WP | 3000 BR
Colours: Indigo | Cream | Soft Teal | Raspberry | Marine Blue | Dusky Pink
Sizes: 8-20



Beachcomber Long II

Polyester Waterproof Coat | Soft Jersey Lining
3000 WP | 3000 BR
Colours: Deep Coral | Cream | Soft Sage | Marine Blue Floral | Navy
Sizes: 8-20

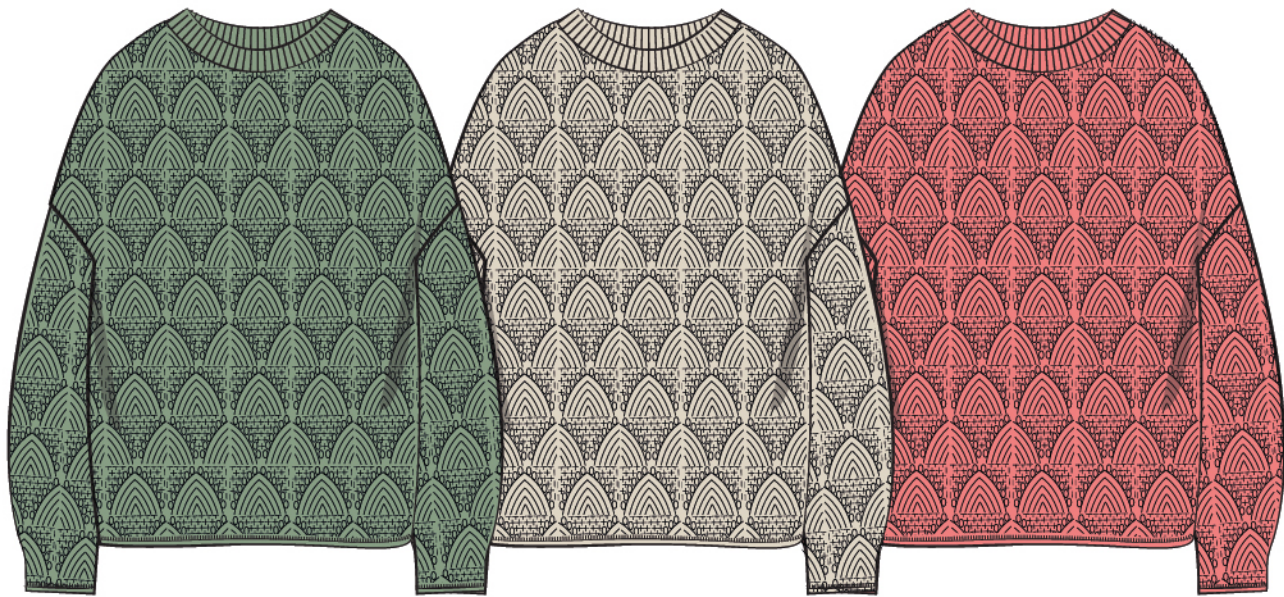


Laurel Gilet

100% Repreve Recycled Synthetic Fill | 160g
Colours: Sugar Coral | Indigo | Soft Sage
Sizes 8-20







Eden

100% BCI Cotton | 370g
Colours: Soft Sage | Coconut | Sugar Coral
Sizes: 8-20



Seaside

Cotton Rich Jersey | 83% Cotton | 17% Polyester | 320g
Colours: Deep Coral | Marine Blue | Dusky Pink
Sizes: 8-20



Pearl

60% BCI Cotton | 40% Acrylic | 370g
Colours: Cream | Navy
Sizes: 8-20



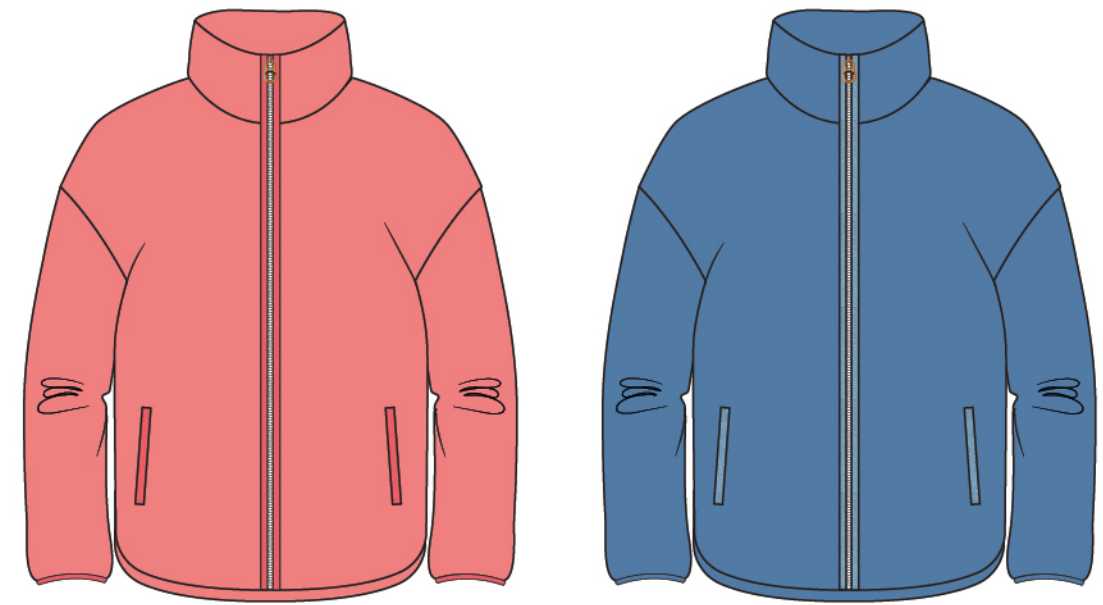
Coral

Cotton Rich Brushed Jersey | 83% Cotton | 17% Polyester | 320g
Colours: Marine Blue Stripe | Soft Teal
Sizes: 8-20



Shore II

Cotton Rich Brushed Jersey | 83% Cotton | 17% Polyester | 320g
Colours: Coconut | Soft Teal Stripe | Marine Blue
Sizes: 8-20



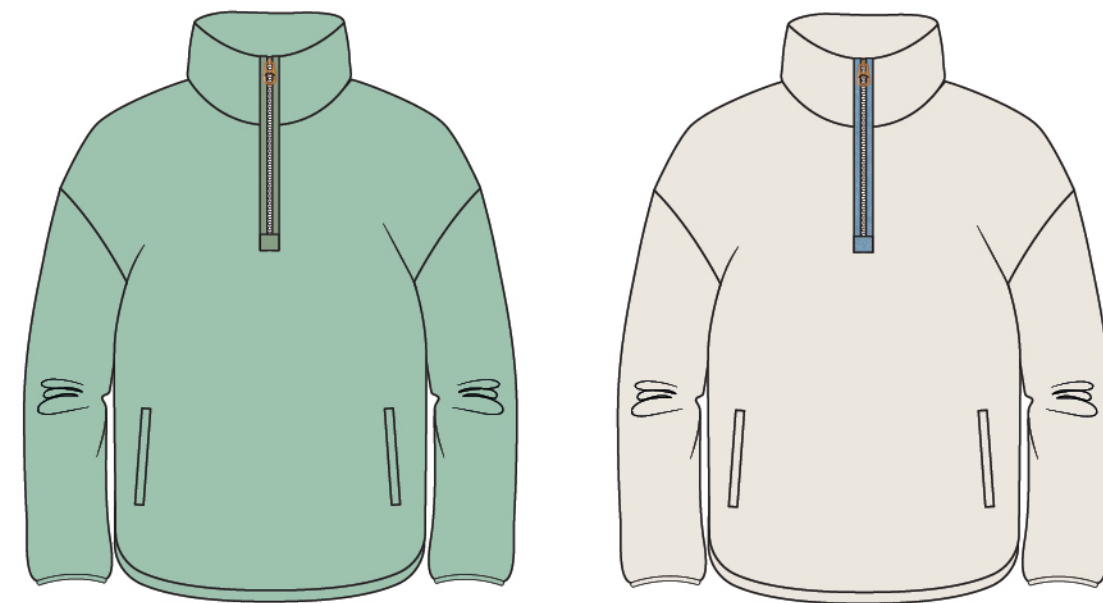
Seashell

Polyester Sherpa Fleece | 320g
Colours: Sugar Coral | Marine Blue
Sizes: 8-20



Haven II

Cotton Rich Brushed Jersey | 83% Cotton | 17% Polyester | 320g
Colours: Coconut and Soft Teal | Pink Stripe | Coconut and Deep Coral
Sizes: 8-20



Bay

Polyester Sherpa Fleece | 320g
Colours: Soft Sage | Coconut
Sizes: 8-20



Causeway Short Sleeve

Cotton Stretch Jersey | 95% Cotton | 5% Spandex | 200g
Blue Sage Stripe | Soft Teal Floral | Pink with Flower
Size 8-20



Ariana Short Sleeve

Cotton Stretch Jersey | 95% Cotton | 5% Spandex | 200g
Navy Floral | Deep Coral Stripe
Size 8-20



Causeway Short Sleeve

 Seagrass Blue Poppy Stripe



Causeway Long Sleeve II

Cotton Stretch Jersey | 95% Cotton | 5% Spandex | 200g
Colours: Marine Blue Stripe | Soft Teal Stripe | Raspberry Floral
Sizes: 8-20



Lydia

Cotton Stretch Jersey | 95% Cotton | 5% Spandex | 200g
Colours: Navy Floral
Sizes: 8-20



Lera

Cotton Stretch Jersey | 95% Cotton | 5% Spandex | 200g
Colours: Soft Teal Floral
Sizes: 8-20



Ariana II

Cotton Stretch Jersey | 95% Cotton | 5% Spandex | 200g
Colours: Coral Teal Stripe | Ditsy Floral
Sizes: 8-20



Katie

Cotton Stretch Jersey | 95% Cotton | 5% Spandex | 200g
Colours: Ditsy Floral
Sizes: 8-20



Keira

Cotton Stretch Jersey | 95% Cotton | 5% Spandex | 200g
Colours: Raspberry Floral
Sizes: 8-20



Lola

100% Viscose | 145g
Colours: Pastel Floral | Soft Pink Floral
100% Cotton | 95g
Colours: Floral Broderie Anglaise
Size 8-20



Frankie

100% Viscose | 145g
Colours: Pastel Floral
Sizes: 8-20



Aoife

100% Viscose | 145g
Colours: Soft Pink Floral
Sizes: 8-20



Lola

Floral Broderie Anglaise



Heritage Collection

CLASSIC COUNTRY WEAR



York

Chocolate

Outback

Fawn

Stockman

Chocolate

Our Heritage Collection has been designed with classic country styling in mind.

Drawing on the traditions of old, this hardy collection of waterproof coats have all the features you need to enjoy leisurely nature walks in the beautiful countryside, local woodlands or simply along your favourite beach.

Ready for cold windswept, rainy days: you can enjoy the simple, unhurried moments and discover the beauty in your surroundings, whatever the weather.

LADIES SPRING | SUMMER 25
Heritage Collection



Outback Full Length | Outrider 3/4 Length

Polyester Pongee | Woven Check Lining | 10,000 WP
 Colours: Fawn | Plum | Nightshade | Fern | Deep Sea | Black | Urban Grey
 Sizes: 6-24



Kendal

Polyester Pongee | Woven Check Lining | 10,000 WP
 Colours: Nightshade | Plum | Fawn | Forest | Berry
 Sizes: 8 - 20



Canterbury

Polyester Pongee | Woven Check Lining | 10,000 WP
 Fawn | Urban Grey | Plum | Nightshade | Fern | Deep Sea | Black
 Sizes: S, M, L



Storm

Polyester Pongee | Woven Check Lining | 10,000 WP
 Fawn | Urban Grey | Plum | Nightshade | Fern | Deep Sea | Black
 Sizes: S, M, L



Avon

Bonded Waterproof Fleece | 450g | 5w000 WP
 Colours: Maroon | Navy
 Size 8-20

MENS SPRING | SUMMER 25

Heritage Collection



Stockman

Polyester Pongee | Woven Check Lining | 10,000 WP
Colours: Deep Night | Duffel | Chocolate
Sizes: S, M, L, XL, XXL



Oxford

Polyester Pongee | Woven Check Lining | 10,000 WP
Colours: Navy | Hunter Green | Chocolate
Sizes: S, M, L, XL, XXL



York

Polyester Pongee | Woven Check Lining | 10,000 WP
Colours: Deep Night | Duffel | Chocolate
Sizes: S, M, L, XL



Windsor

Bonded Waterproof Fleece | 450g | 5000 WP
Colours: Navy | Hunter Green
Sizes: S, M, L, XL, XXL



Finn
Red Lime

Jessie
Turquoise



KIDS COLLECTION

Our kids' collection offers a beautiful range of raincoats, cosy fleeces and everyday tops and tees.

Play doesn't have to stop if the clouds roll in. All of our kids' raincoats are made from the same smart fabrics as our adults' range, ensuring they are waterproof, windproof and breathable.

Our Little Lighthouse collections are not only practical they also offer beautiful bright colours and playful hand-drawn prints to brighten up any season.





Olivia

Polyester Waterproof Coat | Soft Jersey Lining
3000 WVP | 3000 BR
Colours: Princess Party Print | Floral Print
Sizes: 1/2yrs - 7/8yrs



Marnie

Cotton Stretch Jersey | 95% Cotton | 5% Spandex | 200g
Colour: Floral Print
Sizes: 1/2yrs - 7/8yrs



Causeway Short Sleeve

Cotton Stretch Jersey | 95% Cotton | 5% Spandex | 200g
Colours: Princess Print | Baby Pink
Sizes: 1/2yrs - 7/8yrs



Amber

Padded Gilet
Colour: Baby Pink
Sizes: 1/2yrs - 7/8yrs



Cassie

Polyester Fleece | 320g
Colour: Coral
Sizes: 1/2yrs - 7/8yrs



Mollie

Cotton Stretch Jersey | 95% Cotton | 5% Spandex | 200g
Colours: Baby Pink Floral | Coral with Flower
Sizes: 1/2yrs - 7/8yrs



Olivia

Polyester Waterproof Coat | Soft Jersey Lining
3000 WP | 3000 BR
Colour: Spring Garden
Sizes: 1/2yrs - 7/8yrs



Heidi

Rubberised Waterproof Coat | Soft Jersey Lining
3000 WP
Colour: Under the Sea Print
Sizes: 1/2yrs - 7/8yrs



Marnie

Cotton Stretch Jersey | 95% Cotton | 5% Spandex | 200g
Colour: Spring Garden
Sizes: 1/2yrs - 7/8yrs



Causeway Swing Tee

Cotton Stretch Jersey | 95% Cotton | 5% Spandex | 200g
Colours: Flower and Butterfly Print | Under the Sea Print
Sizes: 1/2yrs - 7/8yrs



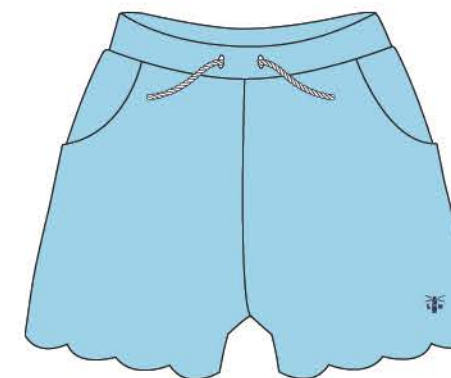
Alex

Polyester Waterproof Gilet | Soft Fleece Lining
3000 WP | 3000 BR
Colour: Spring Garden
Sizes: 1/2yrs - 7/8yrs



Flora

Cotton Rich Jersey | 83% Cotton | 17% Polyester | 320g
Colour: Dusky Pink with Flowers
Sizes: 1/2yrs - 7/8yrs




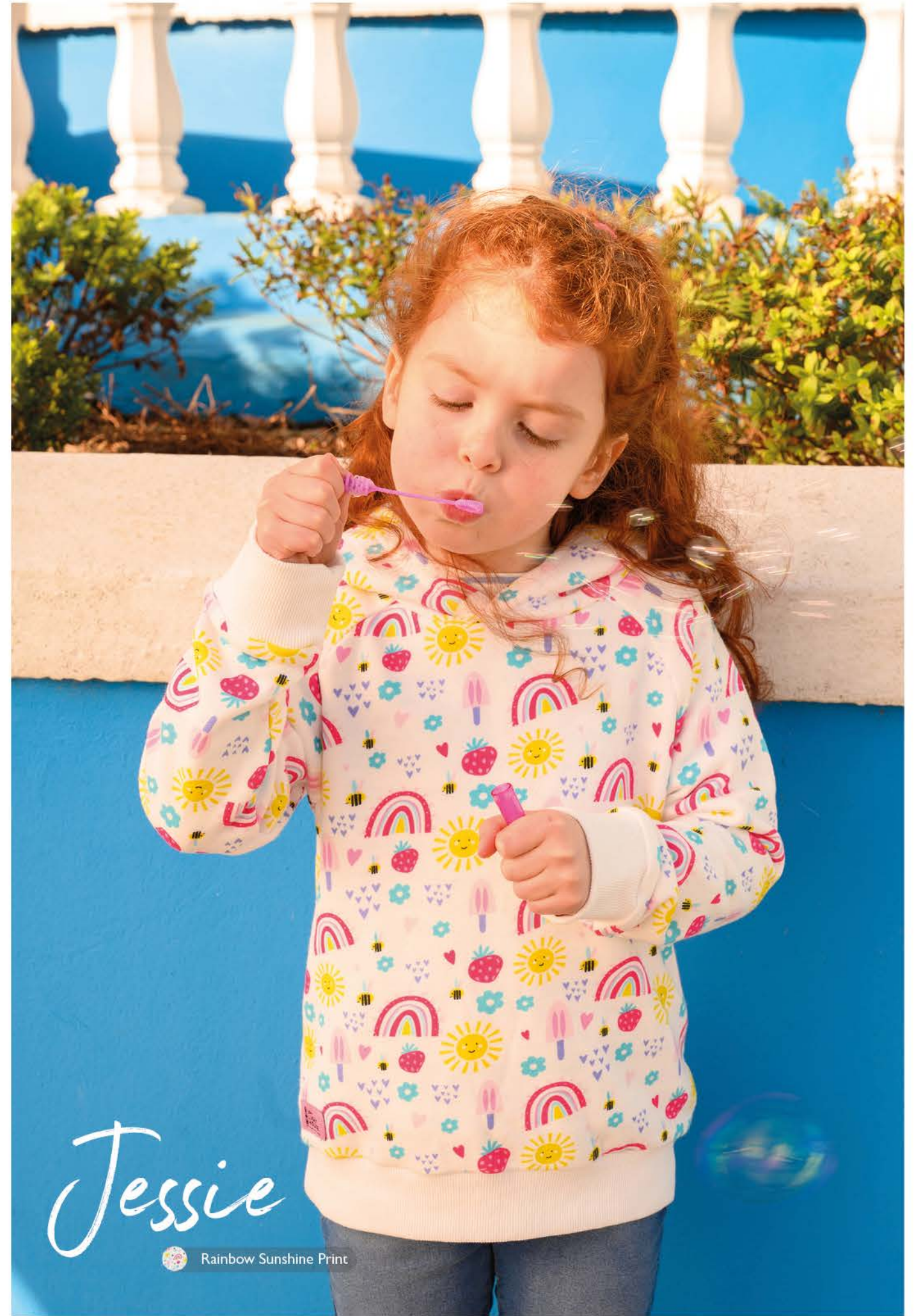
Low Low

Cotton Rich Jersey | 83% Cotton | 17% Polyester | 320g
Colours: Blue | Coral
Sizes: 1/2yrs - 7/8yrs



Olivia

 Soft Turquoise Flower



Jessie

 Rainbow Sunshine Print



Ethan

Polyester Waterproof Coat | Soft Jersey Lining
3000 WP | 3000 BR
Colour: Gaming Print
Sizes: 1/2yrs - 7/8yrs



Ryan

Polyester Waterproof Coat | Mesh Lining
3000 WP | 3000 BR
Colour: Bright Blue and Navy
Sizes: 1/2yrs - 7/8yrs



Caden

Polyester Fleece | 320g
Colour: Navy Bright Blue Orange
Sizes: 1/2yrs - 7/8yrs



Finn

Cotton Rich Jersey | 83% Cotton | 17% Polyester | 320g
Colour: Bright Blue Navy Lime
Sizes: 1/2yrs - 7/8yrs



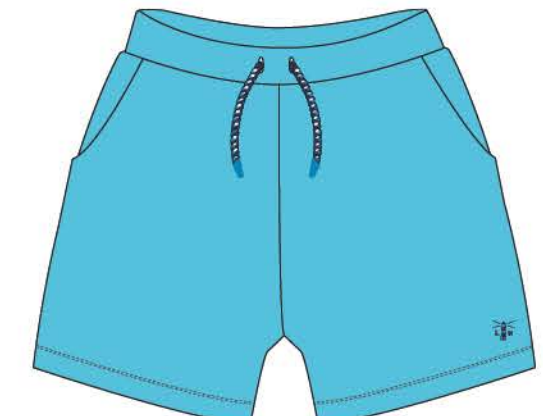
Abel

Padded Gilet
Colour: Navy
Sizes: 1/2yrs - 7/8yrs



Oliver Short Sleeve

Cotton Stretch Jersey | 95% Cotton | 5% Spandex | 200g
Colour: Gaming Print
Sizes: 1/2yrs - 7/8yrs



Louie

Cotton Rich Jersey | 83% Cotton | 17% Polyester | 320g
Colour: Bright Blue
Sizes: 1/2yrs - 7/8yrs



Ethan

Polyester Waterproof Coat | Soft Jersey Lining
3000 WP | 3000 BR
Colour: Tractor and Wind Turbine Print
Sizes: 1/2yrs - 7/8yrs



Alex

Polyester Waterproof Gilet | Soft Fleece Lining
3000 WP | 3000 BR
Colour: Tractor and Wind Turbine Print
Sizes: 1/2yrs - 7/8yrs



Pier Short Sleeve

100% Cotton Pique
Colours: Green Tractor | Blue Tractor | Red Tractor
Sizes: 1/2yrs - 7/8yrs



Caden

Polyester Fleece | 320g
Colours: Green Tractor | Blue Tractor | Red Tractor
Sizes: 1/2yrs - 7/8yrs



Charlie

100% Cotton Chambray
Colour: Tractor Pattern
Sizes: 1/2yrs - 7/8yrs



Louie

Cotton Rich Brushed Jersey | 83% Cotton | 17% Polyester
320g
Colour: Navy with Green Blue Red
Sizes: 1/2yrs - 7/8yrs



Ethan

Polyester Waterproof Coat | Soft Jersey Lining
3000 WP | 3000 BR
Colour: JCB Print
Sizes: 1/2yrs - 7/8yrs



Alex

Polyester Waterproof Gilet | Soft Fleece Lining
3000 WP | 3000 BR
Colour: JCB Print
Sizes: 1/2yrs - 7/8yrs



Oliver Short Sleeve

Cotton Stretch Jersey | 95% Cotton | 5% Spandex | 200g
Colour: JCB Excavator and Loadall
Sizes: 1/2yrs - 7/8yrs



Pier Short Sleeve

100% Cotton Pique
Colour: JCB Fastrac
Sizes: 1/2yrs - 7/8yrs



Jude

Polyester Waterproof Puddlesuit | Soft Fleece Lining
3000 WP | 3000 BR
Colour: JCB Print
Sizes: 1/2yrs - 5/6yrs



Jackson

Cotton Rich Brushed Jersey | 83% Cotton | 17% Polyester
320g
Colour: Navy JCB
Sizes: 1/2yrs - 7/8yrs



Charlie

100% Cotton Chambray
Colour: Digger Pattern
Sizes: 1/2yrs - 7/8yrs



Louie

Cotton Rich Brushed Jersey | 83% Cotton | 17% Polyester
320g
Colour: Navy JCB
Sizes: 1/2yrs - 7/8yrs





Packable Performance Outerwear For Life On The Go

Distributed globally, Mac in a Sac has a reputation for developing technical, high performance packables.

Pack it for sport, travel and everyday adventures.



Bespoke display stands are available as part of the stockists' package to maximise profitability of retail floor space.

Ask your sales representative
about stocking our sister brand

Unpack Adventure
macinasac.com

Contact +44(0)2890 790 588 | sales@targetdry.com





live simple. live happy

Target Dry Ltd, 7 Alanbrooke Park, Castlereagh,
Belfast, N. Ireland, BT6 9HB

+44(0)2890 790 588 | sales@targetdry.com