

MY FLAME

LIFESTYLE

collection F/W 2024



Cheers!



Light my fire



Dreaming of a wine x-mas



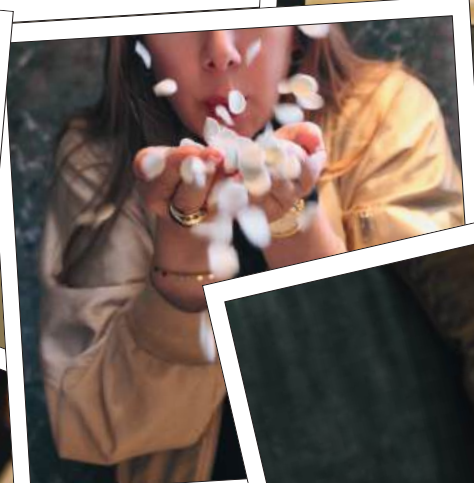
X-mas hugs



Under the mistletoe



Shine, darling



Confetti is always



Thank you



For the love of gold



SPRINKLE JOY
INTO THE COZY
SEASON

Hi there, candle connoisseurs and fragrance aficionados! Welcome to the coolest corner of winter wonderland - My Flame Lifestyle's latest catalogue is here to ignite your senses and sprinkle some joy into your cozy season!

At My Flame Lifestyle, we're not just about candles and home fragrances—we're about crafting experiences that make every moment memorable. With each item in our product range adorned with a fun, sweet, or thoughtful quote, we've got a gift for every occasion, whether you're celebrating a birthday, a special milestone, or simply treating yourself to a little self-care.

And speaking of celebrations, buckle up because this winter, we're sleighing it with a sleigh-load of new arrivals! Dive into our winter wonderland of Christmas goodies, where every item is crafted with holiday cheer in mind. Whether you're decking the halls, cozying up by the fire, or gifting your nearest and dearest, our Christmas collection has got you covered. And guess what? We've added a dash of pizzazz with a brand-new candle collection that's as fun and unique as you are! Psst, don't miss out on our massage oil candles—they come in flagons, making it oh-so-easy to pour that liquid wax and melt away your worries.

But wait, there's more! Thanks to our rock-solid partnership with Amnesty International, we've whipped up a dozen fresh products exclusively for our Dutch pals. From candles that light up the room to soaps that leave you feeling squeaky clean, lip balms that pucker up those lips, to hand creams that keep your mitts as soft as marshmallows—our new range is all about spreading love and light. With 10% of our Amnesty International collection going towards the fight for equal human rights, we're not just lighting candles—we're igniting change in the world.

Oh, and did we mention? Sustainability is our middle name! We're proud to keep the flame of social and environmental responsibility burning bright by teaming up with the Roundtable for Responsible Soy (RTRS).

So, grab your coziest blanket, brew a cup of cocoa, and flip through our catalogue—it's time to light up your store with My Flame Lifestyle!

Cheers!

Femke de Boer & Annetiet Brandjes
Founders





5	SOY CANDLES
	5. MASSAGE CANDLES
	6. CANDLES WITH A HUG INSIDE
	8. CANDLES WITH CHARM INSIDE
	10. WINE CANDLES
	12. QUOTES BY INSPIRATORS
	13. CANDLES WITH WISH BRACELET
	15. CANDLES WITH MESSAGE BOTTLE INSIDE
	17. CANDLES WITH CRYSTAL ROCK INSIDE
19	MATCHES IN A BOTTLE
21	MORE SOY CANDLES
	21. MATT/ METALLIC CANDLES
24	ROUNDTABLE ON RESPONSIBLE SOY ASSOCIATION
25	EVEN MORE SOY CANDLES
	25. HIDDEN MESSAGE CANDLE
	27. SIGNATURE COLLECTION
	29. CORK CANDLES
	33. MINI CANDLES
	35. TIN CANDLES
37	AMNESTY INTERNATIONAL
41	X-MAS COLLECTION
45	BATH & BODY
	45 BODY WASH BAR
	46 VEGAN BODY SCRUB
	47 BATH SALT & BATH BOMBS
	49 LIQUID HAND SOAP
	50 CONFETTI HAND SOAP
	51 HAND SOAP & HAND CREAM GIFTBOX
	52 LIP BALM & HAND CREAM
55	HOME FRAGRANCES
58	FRAGRANCE LIST
61	DISPLAYS
62	LET'S CONNECT

SOY CANDLES

We love the soft touch of soy wax and its organic properties. As it's all plant wax, thus vegan, they hardly spread any soot, they burn up to 45% longer compared to regular candles and they have a better scent throw due to their lower burning point. We would also like to share a fun fact; when the candle has burned for a little while, you can use the liquid wax as hand cream for dry hands. You can blow out the candle and pour the wax right into your hands. Massage the wax into your hands et voila, you have a great moisturizer for the day. Additionally, soy candles are better for the environment as they're made of soy beans instead of crude oil. Our soy beans come from RTRS certified plantations (more information on page 25) for which no rain forests are harmed and the beans are non-GMO. These candles are a must-have in every home.

Massage candles RELAX. I GOT YOUR BACK

NEW

These candles are a blend of soy and coconut wax. The perfect fusion for a relaxing massage oil.



SKU: MA.016.06A
Scent: Lavender Fields
Size: D.6.5 x H.7 cm
Quantity: 6

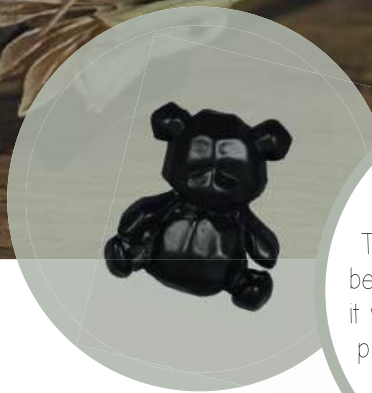


SKU: MA.016.06B
Scent: Calming Sandalwood
Size: D.6.5 x H.7 cm
Quantity: 6



SKU: MA.016.06C
Scent: Relaxing Chamomile
Size: D.6.5 x H.7 cm
Quantity: 6





Inside these candles, one can find a bear as a token for a hug. The receiver can easily pull the bear out of the wax and carry it with them or put it in a special place. Every time they see it, they will be reminded the giver thinks of them

- SOY CANDLES -

BESTSELLER



SKU: GL.BE.002.01B
Scent: Warm Cashmere
Size: D.8 x H.9 cm
Quantity: 4



SKU: GL.BE.002.06A
Scent: Fresh Cotton
Size: D.8 x H.9 cm
Quantity: 4



SKU: GL.BE.002.01A
Scent: Warm Cashmere
Size: D.8 x H.9 cm
Quantity: 4

- SOY CANDLES -
WITH CHARM

NEW



SKU: CH.017.01
Scent: Warm Cashmere
Size: D.10.7 x H.8 cm
Quantity: 4



SKU: CH.017.03
Scent: Amber's Secret
Size: D.10.7 x H.8 cm
Quantity: 4



SKU: CH.017.04
Scent: Green Tea Time
Size: D.10.7 x H.8 cm
Quantity: 4



SKU: CH.017.02
Scent: Minty Bamboo
Size: D.10.7 x H.8 cm
Quantity: 4



SKU: CH.017.06
Scent: Fresh Cotton
Size: D.10.7 x H.8 cm
Quantity: 4



SKU: CH.017.05
Scent: Fig's Delight
Size: D.10.7 x H.8 cm
Quantity: 4



SKU: CH.017.07
Scent: Silky Tonka
Size: D.10.7 x H.8 cm
Quantity: 4

We just love to add something fun to our candles. These candle feature a charm made of wax. Just light the candle and the charm will eventually melt away.



Happy B-day, Darling -x-

- SOY CANDLES -



SKU: GL.WI.007.01
Scent: Warm Cashmere
Size: D.8 x H.11 cm
Quantity: 4



SKU: GL.WI.007.06
Scent: Fresh Cotton
Size: D.8 x H.11 cm
Quantity: 4



SKU: GL.WI.007.07
Scent: Silky Tonka
Size: D.8 x H.11 cm
Quantity: 4

CHAMPAGNE IS ALWAYS THE ANSWER



SKU: GL.WI.BL.CORK
Scent: Warm Cashmere
Size: D.5.5 x H.13 cm
Quantity: 4



SKU: GL.WI.WH.FLY
Scent: Fresh Cotton
Size: D.5.5 x H.13 cm
Quantity: 4



SKU: GL.WI.GLD
Scent: Silky tonka
Size: D.5.5 x H.13 cm
Quantity: 4



SKU: GL.WI.L.BL
Scent: Warm Cashmere
Size: D.7 x H.15 cm
Quantity: 4



SKU: GL.WI.L.WH
Scent: Fresh Cotton
Size: D.7 x H.15 cm
Quantity: 4



SKU: GL.WI.L.GLD
Scent: Silky Tonka
Size: D.7 x H.15 cm
Quantity: 4

- SOY CANDLES -



SKU: XBG.9010.MBL1
Scent: Warm Cashmere
Size: D.9 x H.10 cm
Quantity: 4



SKU: XBG.1012.MBL5
Scent: Warm Cashmere
Size: D.10 x H.12 cm
Quantity: 4

BESTSELLER



SKU: XBG.9010.MGO2
Scent: Silky Tonka
Size: D.9 x H.10 cm
Quantity: 4



SKU: XBG.1012.MGO6
Scent: Silky Tonka
Size: D.10 x H.12 cm
Quantity: 4



SKU: XBG.9010.SBL3
Scent: Warm Cashmere
Size: D.9 x H.10 cm
Quantity: 4



SKU: XBG.1012.SBL7
Scent: Warm Cashmere
Size: D.10 x H.12 cm
Quantity: 4



SKU: XBG.9010.SGO4
Scent: Silky Tonka
Size: D.9 x H.10 cm
Quantity: 4



SKU: XBG.1012.SGO8
Scent: Silky Tonka
Size: D.10 x H.12 cm
Quantity: 4

QUOTES BY INSPIRATORS COLLECTION



THE BEST THING TO HOLD ONTO IN LIFE IS EACH OTHER

- AUDREY HEPBURN

- SOY CANDLES -



SKU: WBR.006.01
Scent: Warm Cashmere
Size: D.7 x H.6 cm
Quantity: 4

BESTSELLER



SKU: WBR.006.03
Scent: Amber's Secret
Size: D.7 x H.6 cm
Quantity: 4



SKU: WBR.006.04
Scent: Green Tea Time
Size: D.7 x H.6 cm
Quantity: 4

Use this sign in your shop to show your customers which bracelet goes with which candle.



SKU: WBR.006.02
Scent: Minty Bamboo
Size: D.7 x H.6 cm
Quantity: 4



SKU: WBR.006.06
Scent: Fresh Cotton
Size: D.7 x H.6 cm
Quantity: 4



SKU: WBR.006.05
Scent: Fig's Delight
Size: D.7 x H.6 cm
Quantity: 4



- SOY CANDLES -

WISHING YOU LOTS OF
JOY & HAPPINESS ♡



SKU: GL.MB.003.01
Scent: Warm Cashmere
Size: D.9 x H.5 cm
Quantity: 4

YOU ARE THE BEST 🌟



SKU: GL.MB.003.03
Scent: Amber's Secret
Size: D.9 x H.5 cm
Quantity: 4

COUPON FOR: BIG HUG
UNLIMITED LUGS ♡

BESTSELLER



SKU: GL.MB.003.04
Scent: Green Tea Time
Size: D.9 x H.5 cm
Quantity: 4

JIJ BENT ECHT EEN
TOPPER 🌟



SKU: GL.MB.003.02
Scent: Minty Bamboo
Size: D.9 x H.5 cm
Quantity: 4

WISHING YOU LOTS OF
JOY & HAPPINESS ♡



SKU: GL.MB.003.06
Scent: Fresh Cotton
Size: D.9 x H.5 cm
Quantity: 4

PEOPLE YOUR AGE
LOOK SO MUCH OLDER 🌟



SKU: GL.MB.003.05
Scent: Fig's Delight
Size: D.9 x H.5 cm
Quantity: 4

- SOY CANDLES -
WITH CRYSTAL ROCK INSIDE

Crystal Love



SKU: GL.CR.001.01
Scent: Warm Cashmere
Size: D.11 x H.6 cm
Quantity: 4

Rainbow Fluorite

The Rainbow Fluorite inside this candle helps you with your focus, memory and clears your mind. As a result, you are better able to process information and draw connections.

BESTSELLER



SKU: GL.CR.001.03
Scent: Amber's Secret
Size: D.11 x H.6 cm
Quantity: 4

Clear Quartz

Clear Quartz helps you accomplish your goals. It supercharges your intentions and amplifies your inner strength to make something happen.



SKU: GL.CR.001.04
Scent: Green Tea Time
Size: D.11 x H.6 cm
Quantity: 4

Rose Quartz

Rose Quartz makes sure that love in its broadest sense is coming your way... and who doesn't like to have some extra love in his or her life?



SKU: GL.CR.001.02
Scent: Minty Bamboo
Size: D.11 x H.6 cm
Quantity: 4

Green Aventurine

The Green Aventurine brings you luck. Whether you can use some luck in wealth, love, friendship or growth, this crystal has got your back.



SKU: GL.CR.001.06
Scent: Fresh Cotton
Size: D.11 x H.6 cm
Quantity: 4

Lemon Jade

Don't we all like to have a bit of extra luck and prosperity in our lives? Well, this rock brings you exactly that in addition to harmony and balance. Lemon Jade is a rock that rocks for someone who rocks just as much.



SKU: GL.CR.001.05
Scent: Fig's Delight
Size: D.11 x H.6 cm
Quantity: 4

Amethyst

Translated to Greek this means 'not intoxicated'. Accidentally drank a few wines too many? Not a problem because this rock helps you to detoxify your body. Additionally, the Amethyst gives you soothing dreams, clarity and peacefulness to the waking mind.

MATCHES

These matches are environmentally friendly and don't contain sulfur but an iron-phosphorus compound. Additionally, matches are easily recyclable and biodegradable. Unlike lighters, matches are made from wood which is biodegradable. This way, they won't contribute to the growing waste problem in the world. The glass jar can be re-used for numerous things such as a small flower vase.

Strike at the bottom of the jar



SKU: MTCH.BL
Size bottle: D.6 x H.10.5 cm
Content: 80 matches
Quantity: 8



SKU: MTCH.LGRY
Size bottle: D.6 x H.10.5 cm
Content: 80 matches
Quantity: 8



SKU: MTCH.PI
Size bottle: D.6 x H.10.5 cm
Content: 80 matches
Quantity: 8



SKU: MTCH.GRN
Size bottle: D.6 x H.10.5 cm
Content: 80 matches
Quantity: 8



SKU: MTCH.WH
Size bottle: D.6 x H.10.5 cm
Content: 80 matches
Quantity: 8



SKU: MTCH.SND
Size bottle: D.6 x H.10.5 cm
Content: 80 matches
Quantity: 8



SKU: MTCH.GLD
Size bottle: D.6 x H.10.5 cm
Content: 80 matches
Quantity: 8

wooden wick candles

- SOY CANDLES -



SKU: GL.MTC.XS.BLK
Scent: Warm Cashmere
Size: D7.5 x H.5. cm
Quantity: 6



SKU: GL.MTC.XS.LGRY
Scent: Amber's Secret
Size: D.7.5 x H.5 cm
Quantity: 6



SKU: GL.MTC.XS.PI
Scent: Green Tea Time
Size: D.7.5 x H.5 cm
Quantity: 6



SKU: GL.MTC.XS.GRN
Scent: Minty Bamboo
Size: D.7.5 x H.5 cm
Quantity: 6



SKU: GL.MTC.XS.WH
Scent: Fresh Cotton
Size: D.7.5 x H.5 cm
Quantity: 6



SKU: GL.MTC.XS.SND
Scent: Fig's Delight
Size: D.7.5 x H.5 cm
Quantity: 6

BESTSELLER



SKU: GL.MTC.BL
Scent: Warm Cashmere
Size: D.9 x H.5 cm
Quantity: 4



SKU: GL.MTC.GRY
Scent: Amber's Secret
Size: D.9 x H.5 cm
Quantity: 4



SKU: GL.MTC.PI
Scent: Green Tea Time
Size: D.9 x H.5 cm
Quantity: 4



SKU: GL.MTC.GRN
Scent: Minty Bamboo
Size: D.9 x H.5 cm
Quantity: 4



SKU: GL.MTC.WH
Scent: Fresh Cotton
Size: D.9 x H.5 cm
Quantity: 4



SKU: GL.MTC.SD
Scent: Fig's Delight
Size: D.9 x H.5 cm
Quantity: 4



3-wick candles

- SOY CANDLES -



SKU: GL.MTC.XL.BL
Scent: Warm Cashmere
Size: D.13 x H.8 cm
Quantity: 4



SKU: GL.MTC.XL.LGRY
Scent: Amber's Secret
Size: D.13 x H.8 cm
Quantity: 4



SKU: GL.MTC.XL.PI-1
Scent: Green Tea Time
Size: D.13 x H.8 cm
Quantity: 4



SKU: GL.MTC.XL.GRN
Scent: Minty Bamboo
Size: D.13 x H.8 cm
Quantity: 4



SKU: GL.MTC.XL.WH
Scent: Fresh Cotton
Size: D.13 x H.8 cm
Quantity: 4



SKU: GL.MTC.XL.SND
Scent: Fig's Delight
Size: D.13 x H.8 cm
Quantity: 4

RECYCLE

Recycling and repurposing have become vital practices in our modern world, aiming to reduce waste, conserve resources, and contribute to a more sustainable future. Among the many creative ways to give new life to everyday items, repurposing our candle containers, soap and match bottles, and reed diffusers for decorative and functional purposes stands out as a delightful and environmentally conscious endeavor.

Why let a fun jar or bottle go to waste? Reuse our bottles as a vase for (dried) flowers or beautiful feathers. Or use an empty candle jar for storing your pens or make-up brushes. But also think of using it for serving nuts and olives in it. Or what are your thoughts on this Champagne coupe used as a glass for a festive dessert?





Join our movement!

Founded in 2006 in Zürich, Switzerland, the RTRS (Round Table on Responsible Soy Association) is a non-profit organization that promotes cooperation between producers, suppliers, manufacturers, retailers, financial institutions, civil society organizations and other relevant actors. Its aim is not only sustainability of soy production itself throughout the world but also on social levels. In this respect, it follows the principles of:

Legal compliance and good business practices



Responsible labor conditions



Responsible community relations



Environmental responsibility, no deforestation



Good agricultural practices

My Flame Lifestyle is the first Dutch candle brand that's a member of RTRS and we encourage other brands to follow our footsteps. The soy we use for our candles comes entirely from an RTRS certified producer.

HIDDEN MESSAGE CANDLES



Burn each candle for 3.5 hours and its message will reveal



SKU: SM3.5233.BL
Scent: Warm Cashmere
Size: D.5.2 x H.3.3 cm
Quantity: 6



SKU: SM3.5233.WH
Scent: Fresh Cotton
Size: D.5.2 x H.3.3 cm
Quantity: 6



BESTSELLER



SKU: SM3.5233.SND
Scent: Fig's Delight
Size: D.5.2 x H.3.3 cm
Quantity: 6



PSST... THE MESSAGES OF THE CANDLE ARE:
Big Hug
Sweet Cuddles
Warm Squeeze
PEEL OFF THIS LABEL BEFORE GIVING

- SOY CANDLES -

wooden wick candles



SKU: GL.CO.BL
Scent: Warm Cashmere
Size: D.8 x H.9 cm
Quantity: 4

BESTSELLER



SKU: GL.CO.LGRY
Scent: Amber's Secret
Size: D.8 x H.9 cm
Quantity: 4



SKU: GL.CO.PI
Scent: Green Tea Time
Size: D.8 x H.9 cm
Quantity: 4



SKU: GL.CO.GRN
Scent: Minty Bamboo
Size: D.8 x H.9 cm
Quantity: 4



SKU: GL.CO.WH-1
Scent: Fresh Cotton
Size: D.8 x H.9 cm
Quantity: 4



SKU: GL.CO.SA
Scent: Fig's Delight
Size: D.8 x H.9 cm
Quantity: 4

2-wick candles



SKU: GL.1010.BL
Scent: Warm Cashmere
Size: D.10 x H.10 cm
Quantity: 4



SKU: GL.1010.LGRY
Scent: Amber's Secret
Size: D.10 x H.10 cm
Quantity: 4



SKU: GL.1010.PI
Scent: Green Tea Time
Size: D.10 x H.10 cm
Quantity: 4



SKU: GL.1010.GRN
Scent: Minty Bamboo
Size: D.10 x H.10 cm
Quantity: 4



SKU: GL.1010.WH
Scent: Fresh Cotton
Size: D.10 x H.10 cm
Quantity: 4



SKU: GL.1010.SND
Scent: Fig's Delight
Size: D.10 x H.10 cm
Quantity: 4

- SOY CANDLES -



SKU: GL.RND.GRN
Scent: Minty Bamboo
Size: D.7 x H.12 cm
Quantity: 4



SKU: GL.RND.WH
Scent: Fresh Cotton
Size: D.7 x H.12 cm
Quantity: 4



SKU: GL.RND.DGRY
Scent: Persian Pomegranate
Size: D.7 x H.12 cm
Quantity: 4



SKU: GL.SQ.BL
Scent: Warm Cashmere
Size: L.7 x B.7 x H.9 cm
Quantity: 4



SKU: GL.SQ.LG
Scent: Amber's Secret
Size: L.7 x B.7 x H.9 cm
Quantity: 4



SKU: GL.SQ.PI
Scent: Green Tea Time
Size: L.7 x B.7 x H.9 cm
Quantity: 4



SKU: GL.SQ.WH
Scent: Fresh Cotton
Size: L.7 x B.7 x H.9 cm
Quantity: 4



SKU: GL.SQ.SND
Scent: Fig's Delight
Size: L.7 x B.7 x H.9 cm
Quantity: 4



SKU: GL.MOCK.BL
Scent: Warm Cashmere
Size: D.5 x H.8 cm
Quantity: 8



SKU: GL.MOCK.LG
Scent: Amber's Secret
Size: D.5 x H.8 cm
Quantity: 8



SKU: GL.MOCK.PI
Scent: Green Tea Time
Size: D.5 x H.8 cm
Quantity: 8



SKU: GL.MOCK.GRN
Scent: Minty Bamboo
Size: D.5 x H.8 cm
Quantity: 8



SKU: GL.MOCK.WH-1
Scent: Fresh Cotton
Size: D.5 x H.8 cm
Quantity: 8



SKU: GL.MOCK.SND
Scent: Fig's Delight
Size: D.5 x H.8 cm
Quantity: 8

- SOY CANDLES -



SKU: GL.WW.BL
Scent: Warm Cashmere
Size: D.9 x H.5 cm
Quantity: 4



SKU: GL.WW.GRY
Scent: Amber's Secret
Size: D.9 x H.5 cm
Quantity: 4



SKU: GL.WW.PI
Scent: Green Tea Time
Size: D.9 x H.5 cm
Quantity: 4



SKU: GL.WW.GRN
Scent: Minty Bamboo
Size: D.9 x H.5 cm
Quantity: 4



SKU: GL.WW.WH
Scent: Fresh Cotton
Size: D.9 x H.5 cm
Quantity: 4



SKU: GL.WW.SND
Scent: Fig's Delight
Size: D.9 x H.5 cm
Quantity: 4



SKU: GL.XL.GRN
Scent: Minty Bamboo
Size: D.13 x H.8 cm
Quantity: 3



SKU: GL.XL.WH
Scent: Fresh Cotton
Size: D.13 x H.8 cm
Quantity: 3



SKU: GL.XL.PI
Scent: Green Tea Time
Size: D.13 x H.8 cm
Quantity: 3

- SOY CANDLES -



SKU: tray.24.mini
 Size: L.29.5 x B.20 x H.21.5 cm
 Quantity: 2
 1 tray contains 24 candles



SKU: tray.24.miniT
 Size: L.34 x B.24 x H.26 cm
 Quantity: 1
 1 tray contains 24 candles



SKU: mini.3.goodluck.wh
 Scent: Fresh Cotton
 Size: D.4.2 x H.3.8 cm
 Quantity: 12



SKU: mini.4.love.lg
 Scent: Amber's Secret
 Size: D.4.2 x H.3.8 cm
 Quantity: 12



SKU: mini.2.xxx.pi
 Scent: Green Tea Time
 Size: D.4.2 x H.3.8 cm
 Quantity: 12



SKU: mini.6.hug.snd
 Scent: Fig's Delight
 Size: D.4.2 x H.3.8 cm
 Quantity: 12



SKU: mini.5.hooray.grn
 Scent: Minty Bamboo
 Size: D.4.2 x H.3.8 cm
 Quantity: 12



SKU: mini.1.thx.dg
 Scent: Persian Pomegranate
 Size: D.4.2 x H.3.8 cm
 Quantity: 12



SKU: miniT.3.unplug.wh
 Scent: Fresh Cotton
 Size: D.4.5 x H.5 cm
 Quantity: 12



SKU: miniT.4.joy.lg
 Scent: Amber's Secret
 Size: D.4.5 x H.5 cm
 Quantity: 12



SKU: miniT.2.beau.pi
 Scent: Green Tea Time
 Size: D.4.5 x H.5 cm
 Quantity: 12



SKU: miniT.6.strength.snd
 Scent: Fig's Delight
 Size: D.4.5 x H.5 cm
 Quantity: 12



SKU: miniT.5.cheers.grn
 Scent: Minty Bamboo
 Size: D.4.5 x H.5 cm
 Quantity: 12



SKU: miniT.1.wow.dg
 Scent: Persian Pomegranate
 Size: D.4.5 x H.5 cm
 Quantity: 12

Meet our mini's.
 Just a little something for any occasion.
 Mix and match or just take one.
 Before you know it, your tray is gone.

larger size →

- SOY CANDLES -



SKU: TIN.XL.BL.HOME
Scent: Warm Cashmere
Size: D.12 x H.8 cm
Quantity: 3



SKU: TIN.XL.DGRY
Scent: Persian Pomegranate
Size: D.12 x H.8 cm
Quantity: 3



SKU: TIN.XL.PI
Scent: Green Tea Time
Size: D.12 x H.8 cm
Quantity: 3



SKU: TIN.XL.GRN
Scent: Minty Bamboo
Size: D.12 x H.8 cm
Quantity: 3



SKU: TIN.XL.WH
Scent: Fresh Cotton
Size: D.12 x H.8 cm
Quantity: 3



SKU: TIN.XL.SND
Scent: Fig's Delight
Size: D.12 x H.8 cm
Quantity: 3



SKU: TIN.M.BL.HAPPYALWAYS
Scent: Warm Cashmere
Size: D.8 x H.5 cm
Quantity: 4



SKU: TIN.M.GRN.HAPPYON
Scent: Minty Bamboo
Size: D.8 x H.5 cm
Quantity: 4



SKU: TIN.M.SND.FUN
Scent: Fig's Delight
Size: D.8 x H.5 cm
Quantity: 4

- SOY CANDLES -



SKU: TIN.XS.BL
Scent: Warm Cashmere
Size: D.6 x H.4 cm
Quantity: 12



SKU: TIN.XS.DGRY
Scent: Persian Pomegranate
Size: D.6 x H.4 cm
Quantity: 12



SKU: TIN.XS.PI-1
Scent: Green Tea Time
Size: D.6 x H.4 cm
Quantity: 12



SKU: TIN.XS.GRN-1
Scent: Minty Bamboo
Size: D.6 x H.4 cm
Quantity: 12



SKU: TIN.XS.WH-1
Scent: Fresh Cotton
Size: D.6 x H.4 cm
Quantity: 12



SKU: TIN.XS.SND-1
Scent: Fig's Delight
Size: D.6 x H.4 cm
Quantity: 12



Dear Santa,
Let's have a ball and
give me all!

- CHRISTMAS COLLECTION - NEW
SOY CANDLES



SKU: XMAS.015.06D
Scent: Winter Wood
Size: D.6 x H.4 cm
Quantity: 12



SKU: XMAS.015.06C
Scent: Winter Wood
Size: D.11 x H.6 cm
Quantity: 4



SKU: XMAS.015.06B
Scent: Winter Wood
Size: D.10 x H.10 cm
Quantity: 4



SKU: XMAS.015.06A
Scent: Winter Wood
Size: D.6 x H.13.5 cm
Quantity: 4



SKU: XMAS.015.01D
Scent: Winter Wood
Size: D.6 x H.4 cm
Quantity: 12



SKU: XMAS.015.01C
Scent: Winter Wood
Size: D.9 x H.5 cm
Quantity: 4



SKU: XMAS.015.01A
Scent: Winter Wood
D.10 x H.12.5 cm
Quantity: 4



SKU: XMAS.015.01B
Scent: Winter Wood
Size: D.8 x H.11 cm
Quantity: 4



SKU: GL.RND.XMAS
Scent: Winter Glow
Size: D.7 x H.12 cm
Quantity: 4



SKU: GL.1010.XMAS
Scent: Winter Glow
Size: D.10 x H.10 cm
Quantity: 4



SKU: GL.SO.XMAS
Scent: Winter Glow
Size: L.7 x B.7 x H.9 cm
Quantity: 4



SKU: GL.MOCK.XMAS
Scent: Winter Glow
Size: D.5 x H.8 cm
Quantity: 8



SKU: GL.CO.RED.XMAS
Scent: Winter Wood
Size: D.8 x H.9 cm
Quantity: 4



SKU: GL.SO.RED.XMAS
Scent: Winter Wood
Size: L.7 x B.7 x H.9 cm
Quantity: 4

WOODWICK

- CHRISTMAS COLLECTION -
SOY CANDLES AND MATCHES



SKU: TIN.M.XMAS.24A
Scent: Winter Glow
Size: D.8 x H.5 cm
Quantity: 4



SKU: TIN.M.XMAS.24B
Scent: Winter Glow
Size: D.8 x H.5 cm
Quantity: 4



SKU: MTCH.XMAS.24
Size bottle: D.6 x H.10.5 cm
Content: 80 matches
Quantity: 8



SKU: MTCH.XMAS
Size bottle: D.6 x H.10.5 cm
Content: 80 matches
Quantity: 8



SKU: GB.TIN4.XMAS.WH
Scent: Winter Glow
Size: D.9 x H.6 cm, D.8 x H.5 cm, D.7 x H.4 cm, D.6 x H.4 cm
Quantity: 4



SKU: GB.TIN4.XMAS.BL
Scent: Winter Glow
Size: D.9 x H.6 cm, D.8 x H.5 cm, D.7 x H.4 cm, D.6 x H.4 cm
Quantity: 4



SKU: C2.2.300
Scent: Winter Glow
Size: D.9 x H.6 cm, D.8 x H.5 cm, D.7 x H.4 cm, D.6 x H.4 cm
Quantity: 4



SKU: GB.XMAS.WH.06
Scent: Winter Glow
Size: 10 pcs of D.4.3 x H.4 cm
Quantity: 4



SKU: GB.XMAS.BL.05
Scent: Winter Glow
Size: 10 pcs of D.4.3 x H.4 cm
Quantity: 4



- CHRISTMAS COLLECTION -



SKU: TINBALL.11.XMAS.GLD
Scent: Winter Glow
Size: L.11 x B.11 x H.11 cm
Quantity: 4



SKU: TINBALL.9.XMAS.GLD
Scent: Winter Glow
Size: L.9 x B.9 x H.9 cm
Quantity: 6



SKU: TINBALL.11.XMAS.GRN
Scent: Winter Glow
Size: L.11 x B.11 x H.11 cm
Quantity: 4



SKU: TINBALL.9.XMAS.GRN
Scent: Winter Glow
Size: L.9 x B.9 x H.9 cm
Quantity: 6



SKU: TINBALL.11.XMAS.RED
Scent: Winter Glow
Size: L.11 x B.11 x H.11 cm
Quantity: 4



SKU: TINBALL.9.XMAS.RED
Scent: Winter Glow
Size: L.9 x B.9 x H.9 cm
Quantity: 6



Merry kisses -x-

FILLED WITH HOLIDAY SPIRIT

- HAND SOAP -

- LIP BALM & HAND CREAM -

NEW



SKU: SO.BLK.07
Scent: Winter Glow
Content: 50 gr.
Quantity: 8

BESTSELLER



SKU: SO.GB350.XMAS
Scent: Winter Glow
Content: 350 ml
Quantity: 6



SKU: HC.009.XMAS
Scent: Fig Deluxe
Content: 50 ml
Quantity: 8



SKU: LB.010.XMAS
Scent: Sweet Rose
Size: 30 ml
Quantity: 8

BATH & BODY

Discover the ultimate collection of care products designed to elevate your store's offerings. Our line includes body wash bars and scrub for in the shower, indulgent bath salts, nourishing hand soaps, and soothing lip balms and hand creams. Each product is crafted to be gentle on the skin, infused with beautiful fragrances, and completely vegan. A perfect match when you're looking for ethical, trendy self care items with a high gift level.

- BODY WASH BAR -



SKU: WWB.013.05
Scent: Black Orchid
Content: 128 gr.
Quantity: 8



SKU: WWB.013.02
Scent: Lemon Verbena
Content: 128 gr.
Quantity: 8



SKU: WWB.013.04
Scent: Oriental Vanilla
Content: 128 gr.
Quantity: 8

BESTSELLER



SKU: WWB.013.06
Scent: Cashmere Bliss
Content: 128 gr.
Quantity: 8



SKU: WWB.013.03
Scent: Flower Fusion
Content: 128 gr.
Quantity: 8



A delightful body wash bar with an integrated sponge and featuring a convenient elastic strap at the top. It also comes with an organic wooden tray for a stylish look.



- VEGAN BODY SCRUB -

Vegan body scrub for the shower

A 100% vegan and cruelty-free body scrub for a wonderfully soft skin. The skin is effectively exfoliated by the efficient and natural sugar particles, leaving your skin feeling like a polished peach. The tube is made of 100% recycled plastic.

How to use: Rub 1 or 2 balls between your hands and massage over your body. Rinse liberally with warm water.

PS Check out the scents! Each one of them is truly amazing.



Sweet as Sugar



Let's have a ball



SKU: WSS.012.03
Scent: Flower Fusion
Content: 42 gr.
Quantity: 6



SKU: WSS.012.02
Scent: Lemon Verbena
Content: 42 gr.
Quantity: 6

BESTSELLER



SKU: WSS.012.04
Scent: Oriental Vanilla
Content: 42 gr.
Quantity: 6



SKU: WSS.012.05
Scent: Black Orchid
Content: 42 gr.
Quantity: 6



SKU: WSS.012.06
Scent: Cashmere Bliss
Content: 42 gr.
Quantity: 6



SKU: WSS.DIS.04
Content: 6 X 5 Tubes
Size: W. 30 x D. 30 x H. 21 cm
Quantity: 1

- BATH SALT -



SKU: SO.BS.01.LGRY
Scent: Amber's Secret
Content: 180 gr.
Quantity: 8



SKU: SO.BS.02.GRN
Scent: Minty Bamboo
Content: 180 gr.
Quantity: 8



SKU: SO.BS.03.PI
Scent: Green Tea Time
Content: 180 gr.
Quantity: 8



SKU: SO.BS.04.SND
Scent: Fig's Delight
Content: 180 gr.
Quantity: 8



SKU: SO.BS.05.WH
Scent: Fresh Cotton
Content: 180 gr.
Quantity: 8

Bath Salt & Organic Candle
SPA KIT

BESTSELLER

Run a hot bath, sprinkle the natural bath salt in the water and light the scented soy candle. The salt detoxes your body, soothes the muscles and can be used as a scrub for a radiant, smooth skin. The fragrance relaxes your mind while sharpening your mental focus. All this combined will make you feel re-born.



SKU: SO.BS.GB.07.LGRY
Scent: Amber's Secret
Content: 180 gr. salt and 40 gr. wax
Quantity: 4



SKU: SO.BS.GB.06.GRN
Scent: Minty Bamboo
Content: 180 gr. salt and 40 gr. wax
Quantity: 4



SKU: SO.BS.GB.08.PI
Scent: Green Tea Time
Content: 180 gr. salt and 40 gr. wax
Quantity: 4



SKU: SO.BS.GB.09.SND
Scent: Fig's Delight
Content: 180 gr. salt and 40 gr. wax
Quantity: 4



SKU: SO.BS.GB.10.WH
Scent: Fresh Cotton
Content: 180 gr. salt and 40 gr. wax
Quantity: 4

- BATH BOMBS - A.K.A. CHILL PILLS



SKU: SO.BP.LGRY
Scent: Amber's Secret
Content: 128 gr.
Quantity: 6



SKU: SO.BP.GRN
Scent: Minty Bamboo
Content: 128 gr.
Quantity: 6



SKU: SO.BP.PI
Scent: Green Tea Time
Content: 128 gr.
Quantity: 6



SKU: SO.BP.SND
Scent: Fig's Delight
Content: 128 gr.
Quantity: 6



SKU: SO.BP.WH
Scent: Fresh Cotton
Content: 128 gr.
Quantity: 6

- HAND SOAP -



SKU: SO.GB350.LGRY-1
Scent: Amber's Secret
Content: 350 ml
Quantity: 6



SKU: SO.GB350.GRN
Scent: Minty Bamboo
Content: 350 ml
Quantity: 6



SKU: SO.GB350.PI
Scent: Green Tea Time
Content: 350 ml
Quantity: 6



SKU: SO.GB350.SND-1
Scent: Fig's Delight
Content: 350 ml
Quantity: 6



SKU: SO.GB350.WH
Scent: Fresh Cotton
Content: 350 ml
Quantity: 6



SKU: SO.GB350.BLK
Scent: Warm Cashmere
Content: 350 ml
Quantity: 6





It's a foam-tastic kind of thing

- HAND SOAP -



SKU: SO.LGRY.06
Scent: Amber's Secret
Content: 50 gr.
Quantity: 8

NEW



SKU: SO.GRN.03
Scent: Minty Bamboo
Content: 50 gr.
Quantity: 8



SKU: SO.PI.05
Scent: Green Tea Time
Content: 50 gr.
Quantity: 8



SKU: SO.SND.04
Scent: Fig's Delight
Content: 50 gr.
Quantity: 8

BESTSELLER



SKU: SO.WH.01
Scent: Fresh Cotton
Content: 50 gr.
Quantity: 8



NEW

- VEGAN HAND SOAP & HAND CREAM



WY.GBSH.021.03
Scent: Amber's Secret & Hibiscus Paradise
Content: 50 gr & 50 ml
Quantity: 4



WY.GBSH.021.02
Scent: Minty Bamboo & Fig Deluxe
Content: 50 gr & 50 ml
Quantity: 4



WY.GBSH.021.06
Scent: Fresh Cotton & Hibiscus Paradise
Content: 50 gr & 50 ml
Quantity: 4

- HAND CREAM AND LIP BALM -



SKU: HC.009.03
Scent: Hibiscus Paradise & Sweet Rose
Content: 50 ml & 30 ml
Quantity: 4



SKU: HC.009.04
Scent: Hibiscus Paradise & Sweet Rose
Content: 50 ml & 30 ml
Quantity: 4



SKU: HC.009.02
Scent: Fig Deluxe & Persian Pomegranate
Content: 50 ml & 30 ml
Quantity: 4



SKU: LH.GB.011.06
Scent: Hibiscus Paradise & Persian Pomegranate
Content: 50 ml & 30 ml
Quantity: 4



SKU: HC.009.05
Scent: Fig Deluxe & Persian Pomegranate
Content: 50 ml & 30 ml
Quantity: 4



SKU: LH.GB.DISP
Content: 5 x 4 giftbags
Size: W.40 x D.40 x H.70 cm

- HAND CREAM AND LIP BALM -



SKU: LB.010.03
Scent: Sweet Rose
Content: 30 ml
Quantity: 8



SKU: HC.009.03
Scent: Hibiscus Paradise
Content: 50 ml
Quantity: 8



SKU: LB.010.04
Scent: Sweet Rose
Content: 30 ml
Quantity: 8



SKU: HC.009.04
Scent: Hibiscus Paradise
Content: 50 ml
Quantity: 8



SKU: LB.010.02
Scent: Persian Pomegranate
Content: 30 ml
Quantity: 8



SKU: HC.009.02
Scent: Fig Deluxe
Content: 50 ml
Quantity: 8



SKU: LB.010.06
Scent: Persian Pomegranate
Content: 30 ml
Quantity: 8



SKU: HC.009.06
Scent: Hibiscus Paradise
Content: 50 ml
Quantity: 8



SKU: LB.010.05
Scent: Persian Pomegranate
Content: 30 ml
Quantity: 8



SKU: HC.009.05
Scent: Fig Deluxe
Content: 50 ml
Quantity: 8



Display these fun tubes in this spinning carousel! With its small size, it easily fits on your counter to let these babies fly out the door.

Size: dia 45 x 50 cm
SKU: LB.HC.DIS.03

HOME FRAGRANCES

Our home fragrances are divided into 2 categories; fragrance sticks and room sprays. These home fragrances complement each other and our candles to create an atmosphere for you to relax in. Every corner of your home will smell divine with these fun designs. Place the fragrance sticks in any room for a continuous scent throw and use our homespray when you want an immediate extra kick of Cashmere Comfort, Fresh Lotus, Flower Bomb or one of our other favorite fragrances.

- ROOM SPRAY -



SKU: RS.BL.CC
Scent: Cashmere Comfort
Content 100 ml
Quantity: 4



SKU: RS.LG.FB
Scent: Flower Bomb
Content 100 ml
Quantity: 4



SKU: RS.PI.US
Scent: Urban Suede
Content: 100 ml
Quantity: 4

BESTSELLER



SKU: RS.WH.FL
Scent: Fresh Lotus
Content: 100 ml
Quantity: 4



SKU: RS.SND.FD.LITTLE
Scent: Fig Deluxe
Content: 100 ml
Quantity: 4

- FRAGRANCE STICKS -



SKU: RD.XS.WH.FL.CHEERS
Scent: Fresh Lotus
Content: 50 ml
Quantity: 6



SKU: RD.WH.FL.HAPPY
Scent: Fresh Lotus
Content: 100 ml
Quantity: 4



SKU: RD.XL.WH.FL.CREME
Scent: Fresh Lotus
Content: 190 ml
Quantity: 3



SKU: RD.XS.LG. FB.MERCI
Scent: Flower Bomb
Content: 50 ml
Quantity: 6



SKU: RD.GR.FB.RELAX
Scent: Flower Bomb
Content: 100 ml
Quantity: 4



SKU: RD.XS.PI.US.ENJOY
Scent: Urban Suede
Content: 50 ml
Quantity: 6



SKU: RD.PI.US.MAGIC
Scent: Urban Suede
Content: 100 ml
Quantity: 4



SKU: RD.GRN.BB.LAZY
Scent: Botanical Bamboo
Content: 100 ml
Quantity: 4



SKU: RD.SND.FD.THANK
Scent: Fig Deluxe
Content: 100 ml
Quantity: 4

- FRAGRANCE STICKS -



SKU: RD.BL.CC.CHIQUE
Scent: Cashmere Comfort
Content: 100 ml
Quantity: 4



SKU: RD.XL.BL.CC.DOLCE
Scent: Cashmere Comfort
Content: 190 ml
Quantity: 3



The re-cycle of life

Let the scent guide your senses



FRAGRANCE LIST

Welcome to the captivating fragrance list of My Flame Lifestyle, where the essence of elegance is captured in every scent. Renowned for our signature soft and beautiful fragrances, we invite you to embark on a sensory journey like no other. Our collection is the result of a harmonious collaboration with a sophisticated and authentic perfume house nestled in the picturesque landscapes of the South of France.

Indulge in the exquisite craftsmanship that defines My Flame Lifestyle, and experience the seamless fusion of nature's beauty and perfumery expertise, beginning from fresh and flowery to a more oriental and woody basenote.

- CANDLES & SOAP -

Green Tea Time

Did you know green tea has the characteristics to eliminate unpleasant odours? It's like a natural air freshener. This divine mix of pure green tea and bamboo gives your home a natural, fresh scent. Accompanied by floral accents such as calming rose and lilies, this beautiful mix makes it a fresh and soft fragrance and has achieved popularity throughout.

Fresh Cotton

A soft and light fragrance that makes your environment smell like it's just been in the washing machine. A fresh, pure and comfortable mix of amber, citrus, lily, jasmine and with a soft hint of musk. With this fragrance, you'll never have to miss that feeling of freshly washed clothes.

Minty Bamboo

If you're into fresh bamboo scents, you're at the right place. This is a fresh scent with watery, flowery and complex notes, blended with a modern heart of bamboo. A mix of apple, mint, bamboo, lilies, pansies and tuberose.

Fig's Delight

From living room to restroom and from kitchen to bathroom. This fragrance is for your entire house. You will never get enough of this fine sweet aroma of fresh figs in combination with the woody though freshening kick of copaiba. A favorite fragrance of many.

Warm Cashmere

This warm combination is the perfect mix of fresh flowers, golden peach, sensual cashmere, musk and soft vanilla. Without a doubt, this is the warmest mix of our favorite ingredients and is the most wanted fragrance by our customers.

Amber's Secret

A strong, delightful and sweet fragrance. It has a sexy mix of amber, vanilla, musk and roses with patchouli floating in the back. Amber's secret goes perfectly well with a cozy night.

Unconditional

The scent, especially designed for our love collection. Unconditional is a beautiful sultry scent as a tribute to women. The essence of this scent is vanilla, nectar of cassis and softer notes of apricot. Roses give the scent a richer, flowery note, while the patchouli makes it even more intense. The fragrance ends with a hint of caramelized musk.

Silky Tonka

A sensual, rich fragrance. Extravagance! The topnotes are tonkabean, vanilla and pear. A wonderful combination of sweet, fresh, softness, and further down the road you also find a little bit of spice.

Persian Pomegranate

Black Pomegranate is the so-called forbidden fruit. This sultry and sexy fragrance is a mix of pomegranate, prunes, water melon, rhubarb, ceddar wood and a hint of musk and amber. This one is for the deeper souls among us.

Winter Glow

A comfy winter scent with top notes of pine needles, followed by warmer notes of bergamot, incense and sandalwood. This is on to snuggle up on the sofa with a hot chocolate.

Winter Wood

An oriental winter scent with top notes of agarwood and oud, followed by warmer notes of amber, bergamot and musk. This is the perfect fragrance to get through the long and cold winter months.

- HOME FRAGRANCES -

Fresh Lotus

The lotus flower is a symbol of beauty, purity, and fertility. Lotus flowers are water-fresh, clean, and slightly powdery in nature. This fragrance has a fresh aquatic lotus scent with jasmine, lemon, ylang ylang and a hint of rose.

Botanical Bamboo

Green, fresh and clean. The perfect spa-like scent. It is a well-balanced scent with bamboo, bergamot, red grapefruit, jasmine, lily and wild grasses.

Urban Suede

This is a fresh fragrance that conveys exotic appeal. The provocative scent contains accords of jasmine, citrus, rose and pineapple infused with green tea which creates a sensuous feel.

Flower Bomb

An explosion of 1000 flowers with bergamot, jasmine, orange, blossom, patchouli, and a hint of vanilla. A very rich fragrance with alternating fresh and sweet notes.

Cashmere Comfort

The sheer scent inspired by the feel of cashmere upon a woman's skin. This fragrance is a warm blend of jasmine, golden peach, bergamot and musk with a lemony undertone.

- LIP BALM & HAND CREAM -

Hibiscus Paradise

The hibiscus scent is a tropical symphony, captivating the senses with its lush and exotic floral notes. Its sweet, slightly fruity undertones with juicy mandarin evokes visions of sun-kissed beaches and vibrant, blooming gardens, creating a fragrance that is both invigorating and enchantingly soothing.

Fig's Deluxe

Fig's Deluxe scent is an opulent symphony of luxurious notes, blending the velvety richness of ripe figs with decadent undertones of caviar, vanilla and amber.

Sweet Rose

Sweet Rose is a romantic and captivating fragrance that unfolds like a bouquet of freshly bloomed roses, with its delicate sweetness and subtle floral nuances. It embodies the essence of love and femininity.

Persian Pomegranate

Persian Pomegranate is an exotic olfactory journey, marrying the luscious sweetness of ripe pomegranates with a hint of citrusy brightness, evoking the allure of a Persian orchard in full bloom.

- BODY WASH BAR & BODY SCRUB -

Cashmere Bliss

Dive into the ultimate sensory adventure with this mesmerizing fusion of Cashmere, Patchouli, Cedar, Jasmine, Almond and a touch of Vanilla. This harmonious fragrance isn't just a scent; it's an experience that captures the very essence of allure and sophistication.

Black Orchid

Experience the initial burst of a sweet and dark vanilla, followed by a woody-musky body that is both warm and sensual. As it dries down, it reveals its powdery side, becoming even more irresistible and creamy. This inviting warm and spicy aroma with notes of Orchid, Bergamot, Cinnamon, Saffron, and Cloves will leave a long-lasting impression.

Oriental Vanilla

Let the velvety notes of Vanilla, Sandalwood, and Cashmere Wood caress your skin, leaving you with an irresistible and indulgent sensation. Transform your shower experience into a blissful ritual with this enchanting fragrance, designed to evoke an aura of sophistication and allure.

Lemon Verbena

Zestful and invigorating, this fragrance mingles notes of bright lemon, citrusy mandarin orange and aromatic verbena for a garden-fresh favorite. This is a fragrance long-loved and trusted for its ability to freshen up and keep things smelling pristine.

Flower Fusion

This captivating fragrance begins with a burst of zesty orange, mandarin, and bergamot. Then it unfolds into a luxurious bouquet of Turkish rose, jasmine, mimosa, and ylang-ylang. The sensual base combines patchouli, white musk, vanilla, vetiver, tonka bean, and opoponax for a warm, lasting embrace of elegance.



Presentation is



DISPLAY - 7 SHELVES
Black frame with 7 shelves
Size: W.80 x D.40 x H.215 cm



DISPLAY - 4 SHELVES
Black frame with 4 shelves
Size: W.76 x D.40 x H.125 cm



SKU: LB.HC.DIS.03
Space for: 10 x 4 lip balm, idem for hand cream
Size: DIA.45 x H.50 cm

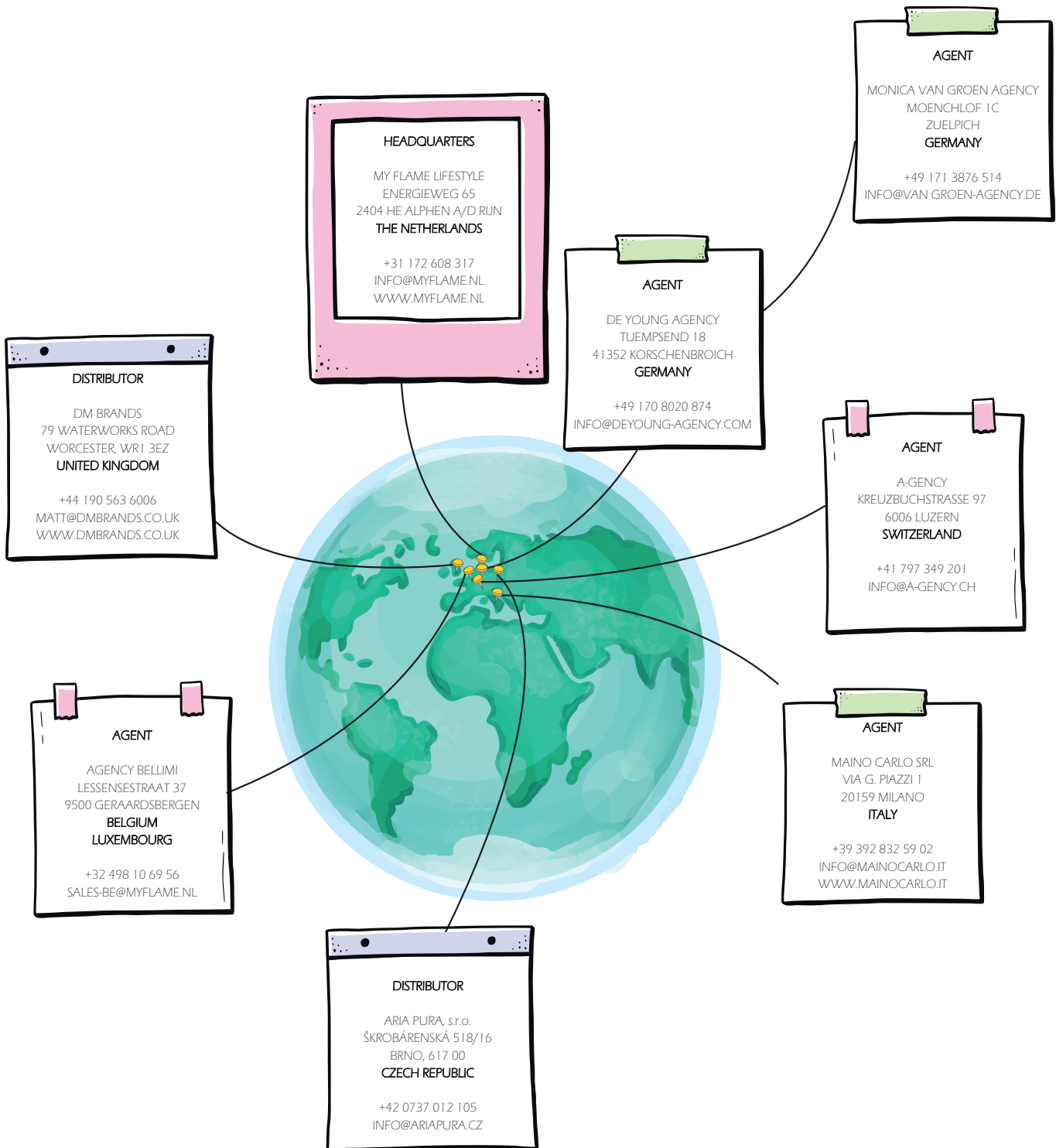


SKU: LH.GB.DISP
Space for: 5 x 4 giftbags
Size: DIA. 40 x H.70 cm



SKU: WSS.DIS.04
Space for: 6 X 5 tubes
Size: W. 30 x D. 30 x H. 21 cm

Let's Connect ...



www.instagram.com/my_flame_lifestyle



www.facebook.com/myflamelifestyle



Get into the holiday spirit



It's



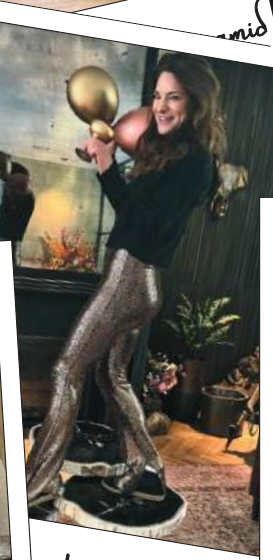
dream



Champagne is always the



Friends Forever



ay! - xxx -



us, charming and irresistible



et's kiss



happy home



Absolutely lovely



Thx! Cheers! -xxx-



The smell of kisses, hugs &



Thank y