

# COMPANY Profile

[www.texturebd.com](http://www.texturebd.com)





# About Our COMPANY

Our origins are in manufacturing—so we have a deep appreciation for the role our exclusive customers play in creating high-quality products at the best value for our customers. We set our standards high based on our commitment to ethics and excellence in quality.

Texture BD is a tailor and client-specific apparel manufacturer and exporter. Texture BD has won a Knit factory and incorporated it with 30 different factories so that we can make all types of knit, woven, and sweater items. Our product ranges are kids' wear, Men's wear, women's wear, work wear, socks, underwear, school uniform, and corporate wear

## **Our Offices:**

**Design Studio and Finance Office:** England

**Sourcing Office (Mainly for Synthetic Fabric):** China

**Design, Development and Manufacturing:** Bangladesh

# Our JOURNEY

We started our journey in 2007 and will take ourselves to the peak. It's an apparel-Manufacturing and trading company that exports readymade garments to the UK, EU, USA, Canada, Australia, South America etc. We sell all types of woven, knit and sweater items under different age sections with lucrative designs.

We're a unique platform of its kind and offer a one-stop complete fashion solution to many global clothing retailers with an exceptional capability to produce a diverse range of products and detailed services from fashion design to delivery.

We have several teams to serve our customers to fulfil their requirements. It has lab facilities to control the quality and quick service, a small in-house sample section for quicker sample support, etc.

We believe in quality, accuracy and commitment. We offer better service at every level of the product cycle. We are always with our customers about what they wish.

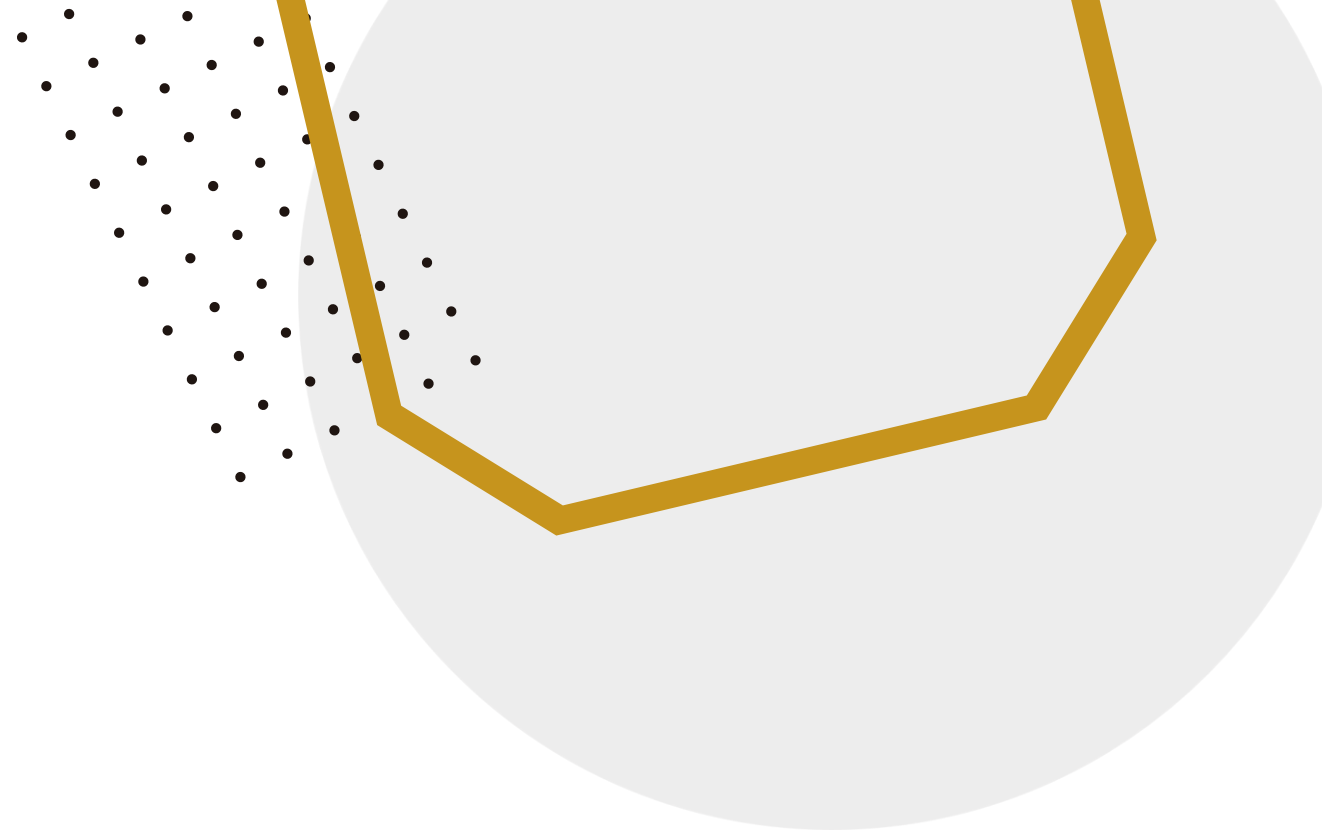
# Our VISSION & MISSION

## ● Vission

To become a reliable global market leader that provides excellence and quality through sustainable innovation, design collaboration, dynamic client services and customized international sourcing delivery with a forward-looking approach. By 2030, people will work together to do **\$100 M** worth of businesses with a customer-oriented approach.

## ● Mission

To initiate and develop Eco- friendly technologies through a trained and knowledgeable workforce to offer the highest level of customer satisfaction. To set up an ethical business standard by providing a safe and rewarding work environment. To ensure sustainable growth through innovation, talents and operational efficiencies. To make a cleaner and greener environment for the next generation to live in the world in a safer condition.



# Product Category



## Knit Items

- T shirt, Polo Shirt, Tank Top, Hoodies , Dresses
- Sweatshirt, Loungewear, Pyjama Set, Sleep Wear, Activewear , Outerwear, Athleisure,

## Sweater Items

- Pullovers ,Cardigans ,Vests and Scarf's



## Woven Items

- Men's, Ladies and Children's Long Pants, Denim 5 pocket Pants, Lady's Capri.
- Cargo Long and Short pants, Beach Shorts
- Swimwear, Boxer Short, Bermuda , Denim Jacket,
- Padding Jacket, Hunting Jacket etc.

# SOURCING INTELLIGENCE

We help you intimately support to source or development of the fabric for the most recent trends and accurately land products at the right time with reasonable price ranges.

Our Sourcing team has a vast knowledge of *Synthetic blends* and *Sustainable* fabrics, which are mainly required for outerwear, loungewear, activewear and homeware or nightwear. Also, our vital source is ready to supply any natural fibre with competitive price ranges.

Our team is set to handle any fancy fabrics with the assist of a fabric technologist and fit technician.



## **Casualwear**

Modal, Cotton/Modal, Poly, Poly/Modal, Tencel, Lyocell, Viscose, Poly/Viscose  
Jersey, Terry, Fleece, Rib, Jacquard, Ponte roma, Poplin, Challis, Sweater look knit.



## **Loungewear**

Poly/Viscose, Pima Cotton, Cotton/Viscose, Cotton/Modal, Poly/Span  
Hacci, Rib Hacci, Yummy, Interlock, Variegated Rib, Satin, Micro Fleece, Plush, Waffle,



## **Nightwear/Pyjamas sets**

Viscose, Modal, Cotton, Cotton/Viscose, Cotton/Modal, Satin, Plush, Sherpa, Tricot, Micro  
Fleece, Voil, Challis, Hacci, Mini Terry, Fleece, various types of Ribs, Waffle, Interlock,



## **Active wear/Athleisure**

Polyester spandex, Nylon Spandex, Cotton/Polyester, Modal Spandex , Lyocell Spandex

# OUR STRENGTH

## 01 DESIGN

- Recommend Style, Print, Fabric
- Provide Sketch, CAD, and 3D pictures to get a good presentation.
- We can provide Category wise or season-wise presentation

## 03 DEVELOPMENT

- As Sampling is one of the critical elements of the selection and order process, so we take care of it with high priority
- Faster sample submission with the right quality is our passion
- We are ready to offer multiple styles for helping to select the styles

## 02 SOURCING

- Quick and right sourcing for Specific Categories as per the recent trend
- Wide varieties of Collection helps buyer choose the expected quality faster
- Intelligent sourcing brings the highest level of satisfaction & competitive cost.

## 04 FITTING

- CREATING NEW STYLES
- GRADING SPECS
- ENSURE FITTING



# Supporting Business wings:

**Embroidery section:** We have an embroidery section where we can implement the below type of work very efficiently. We are using high-standard raw materials as environment friendly and meet as well as international quality requirements.

1. Fashionable sequence attachment.
2. All types of application attachments.
3. All types of embroidery thread attachment etc.



**Screen printing section:** We have a screen print solution wings where we can make the below type of printing very efficiently. We use high-standard raw materials that are environment friendly and meet international quality requirements.

1. Sublimation print.
2. Plastisol high-density print.
3. Flock print.
4. Discharge print etc.

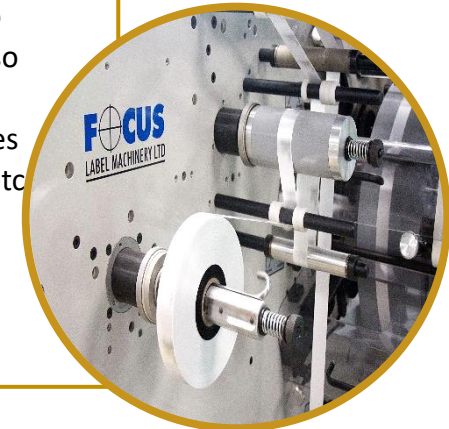


**Garment wash section:** We have a wash section where we can do the below type of work very efficiently.

1. Acid wash/ stone wash.
2. Cool dye.
3. Tie and dye wash.
4. Sandblasting etc.



**Trims section:** We have a won trims solution wings where we can make Paper hang tags, photo boards, Satin and paper printed care labels etc. Also have a strong trims sourcing in local and abroad Leather patch, PU Leather patch, Fashionable tapes & Ribbon, Drawstring with metal and silicon end etc. Many more with high-end quality, environment-friendly products which consistently meet international quality requirements.

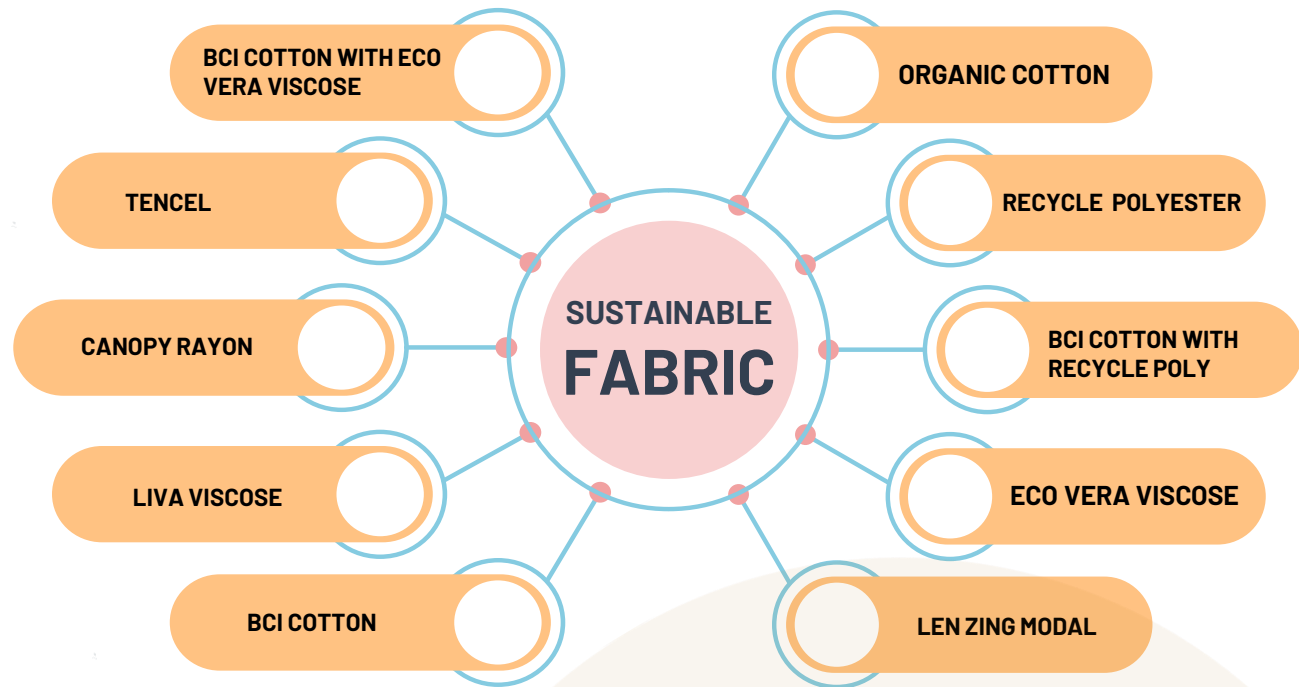




# SUSTAINABLE SOURCING

One of humanity's essential needs is a healthy environment to live in. They maximize value creation from both the environmental and the economic perspectives. This universe approaches a safe future to improve quality Environment - To have healthy communities, we need clean air, natural resources, and a non-toxic environment. Our manufacturing offers all types of Sustainable products and initiatives per Brand requirements.

## SUSTAINABLE YARN



# SUSTAINABLE TRIMS



Recycle Paper Hang Tag



Recycle Paper Carton



Recycle Poly Bag



Recycle Poly Sewing Thread

# COMPLIANCE & SUSTAINABILITY

## Compliance Partnership

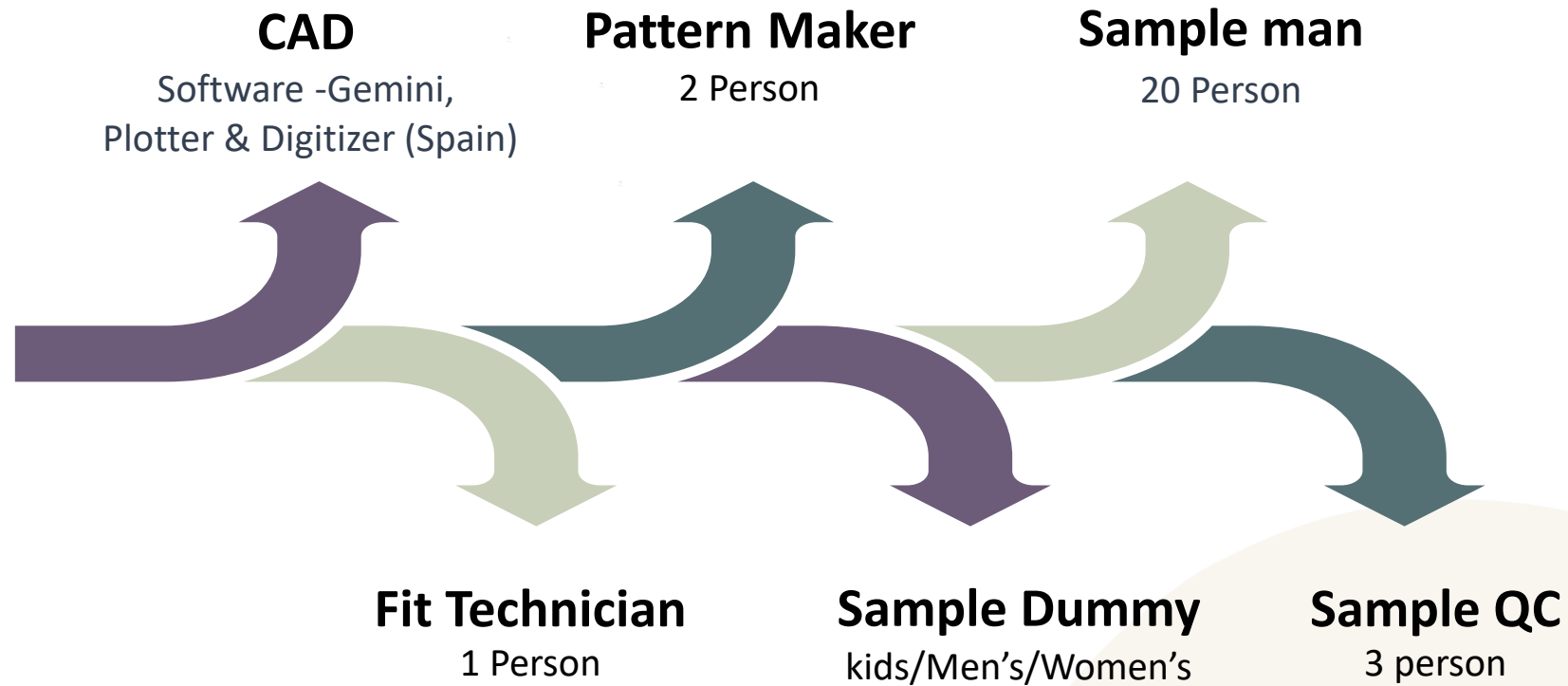


## Sustainability Partners



# Own SAMPLE DEPARTMENT

We have a fully integrated and well-equipped sample department where we can make any type  
Of knit and woven samples very efficiently.



# OUR CLIENT

MINI3ONF

**JOE BOXER®**

**tricot**

**TIGRE  
GÉANT**



**bebe**



**U.S. POLO ASSN.**  
SINCE 1890

*kathy ireland®*

**AUBAINERIE**



# TEAM STRENGTH

## ● Top Management

- MD. JASIM UDDIN (Managing Director)
- MAHADI REZA (Head of Marketing & Merchandising)
- MD. MASUM BILLAH (GM Marketing & Merchandising)



MD. JASIM UDDIN



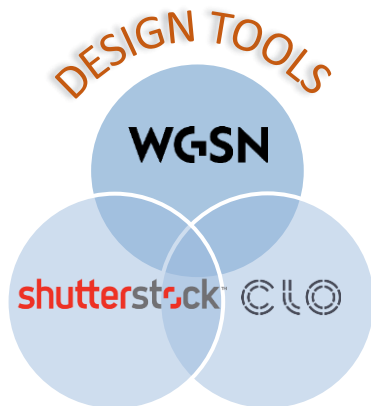
- Merchandising (15 Persons)
- Design & Development (7 Persons)
- Quality department (20 Persons)
- Fitting department (2 Persons)
- Commercial & Logistics (4 Persons)
- Procurement (2 Persons)
- Fabrics & Trims department (4 Persons)
- Others (5 Persons)





# DESIGN TEAM

- New Design & Artwork Development.
- Co-creation With Brands Designer.
- Design Support to Customers.
- New Product Development.
- WGSN Subscription.
- Country's Talented Design Team.





---

# Product

P R E S E N T A T I O N

---



# SLEEPWEAR / LOUNGWEAR COLLECTION



SS/2022



# HEAVY KNITWEAR COLLECTION



AW/2022

# OUTWEAR COLLECTION



AW/2022





# ACTIVEWEAR COLLECTION



SS/2022

# SWEATER COLLECTION



AW/2022



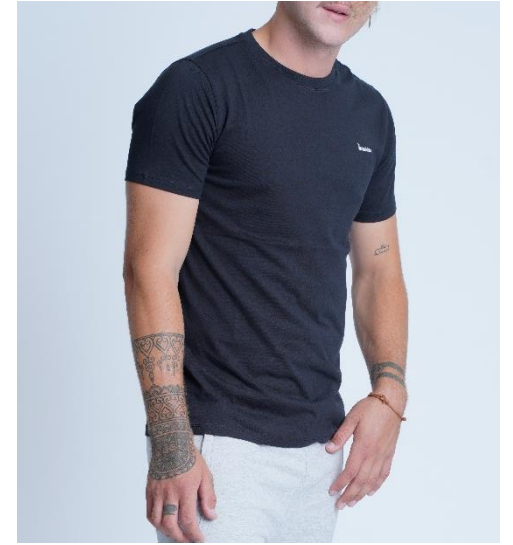


M e n ' s C o l l e c t i o n

---



# LOUNGEWEAR COLLECTION



SS/2022

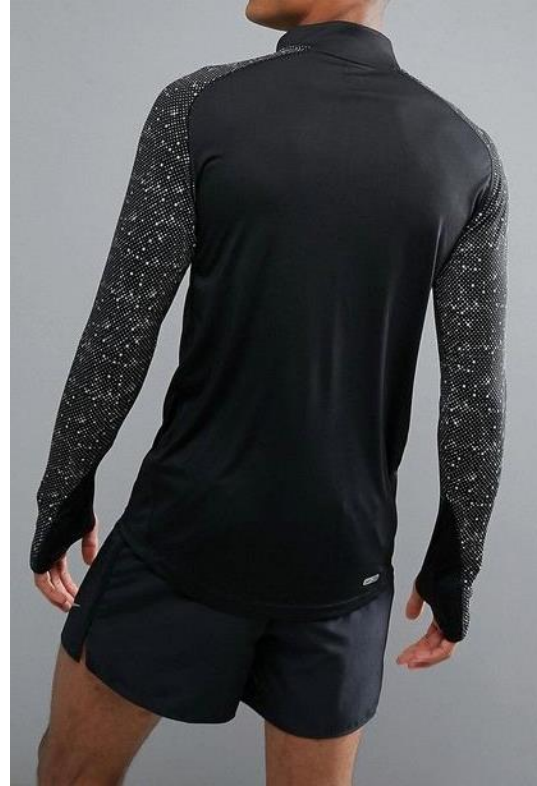
# OUTERWEAR COLLECTION



AW/2022



# ACTIVEWEAR COLLECTION



AW/2022

# OUTWEAR COLLECTION



AW/2022



# SWEATER COLLECTION



AW/2022



# WOVEN COLLECTION



# FAQ

## 1. What does Texture BD?

- Texture BD is a garment producer and exporter with its manufacturing unit.

## 2. Where is Texture BD located?

- Texture BD Head office is in Uttara, Dhaka, Bangladesh. Also, have a finance office in the UK and a sourcing office in China.

## 3. Why Choose Texture BD?

- Texture BD can provide multi-product supply and excellence in sourcing, design and development with a commitment to quality and on-time delivery.

## 4. Do you have any design and Development team?

- Yes, we have a design team who can support new designs in cooperation with WGSN, Shutterstock etc., along with a dedicated product development team.

## 5. What is the main strength of Texture BD?

- Our main strength is fabric sourcing, design creation, development, quality and commitment to on-time delivery.

## 6. Does Texture BD have a sample room

- Yes, we have our sample section, which consists of CAD, pattern, sample cutting, sewing, and finishing section itself. A group of expert and dedicated personnel are involved in making samples carefully. We assure the highest quality samples to our valued customers.

## 7. What is the sample development lead time?

- For the available colour fabric, we can send the sample within 3-5 days; in the case of the actual colour, we require about 15-20 days, depending on the fabric sourcing and quality.

## 8. What is the general lead time for the costing?

- Our dedicated team can quote prices within a day for regular styling. For others, the team can take the minimum lead time to offer sharp prices.

## 9. What is the main product that can supply by Texture BD?

- Texture BD specialises in knitting, woven, and sweaters for men, Ladies and kids. Such as Casual wear, outerwear, Activewear, Athleisure, Home wear or nightwear, and Loungewear.



# FAQ

10. **Which products can you produce for fast delivery?**

- Cotton, CVC, Cotton/Spandex, CVC terry or fleece, and all types of woven and Denim are suitable for faster delivery.

11. **What type of fabric is required to be imported?**

- Mainly, all Synthetic and Synthetic blend fabric is required to import. But we can source any material, e.g. Polyester, Viscose, Modal, and any kind of blended fabric, locally.
- We have an experienced fabric sourcing team, and they can source any fabric inside as well as outside of the country. Our team can source different and critical materials with various designs quickly. We have our own fabric sourcing office in China to ensure the Quality of fabric and delivery issues.

12. **Does Texture BD have Sustainable sourcing?**

- Texture BD is committed towards sustainable sourcing like BCI Cotton, Organic cotton, Recycled cotton, Recycle Poly, Lenzing, Ecovera, Liva viscose, Tencel, Lyocell etc.
- We also use sustainable materials in accessories and packing, such as recycled poly labels, sewing thread, biodegradable poly bags, and recycled paper cartons.

13. **What is the garment production lead time?**

- Garments production lead time for local fabric is 60-70 days, and in the case of synthetic imported items min 90-110 days.

14. **How can I get assurance on the Quality?**

- To fulfil the expectations of our valued customers through highly trained staff who are fully equipped to ensure high-quality control as per international standards. So, we followed in-line, pre-quality and final inspection, three-stage quality control system to ensure our valued client's requirements.

15. **What is the payment term that can accept by Texture BD?**

- TT, LC at Sight.

16. **Can Texture BD make the CIF shipment?**

- Yes, Texture BD can handle CIF shipment.

# BANKING DETAILS



## USD ACCOUNT

**Account Name** : TEXTURE BD LIMITED

**IBAN** : GB62TCCL04140430118925

**SWIFT/BIC** : TCCLGB3L

**Address** : Innovation Centre, Gallows  
Hill, Warwick, England, CV34 6UW

**Bank/Institution** : The Currency  
Cloud Limited

**Bank Address** : The Steward Building  
12 Steward Street, London, E1 6FQ, GB

**Intermediary bank SWIFT (only use if  
required by sender bank)**  
: BARCGB22



## BD Account Details

**Mercantile Bank Limited**

**Account Name** : TEXTURE BD

**Account No** : 011811100013403

**Address**: Osman Plaza, 75, Elephant  
Road, Dhaka -1205

**Telephone**: 88-02-8618732, 88-02-  
9677364.

**Fax**: 880-02-9669458

**SWIFT**: MBLBBDDH014



## POUND ACCOUNT

**AC Name**: TEXTURE BD LIMITED

**Short Code**: 04-03-70

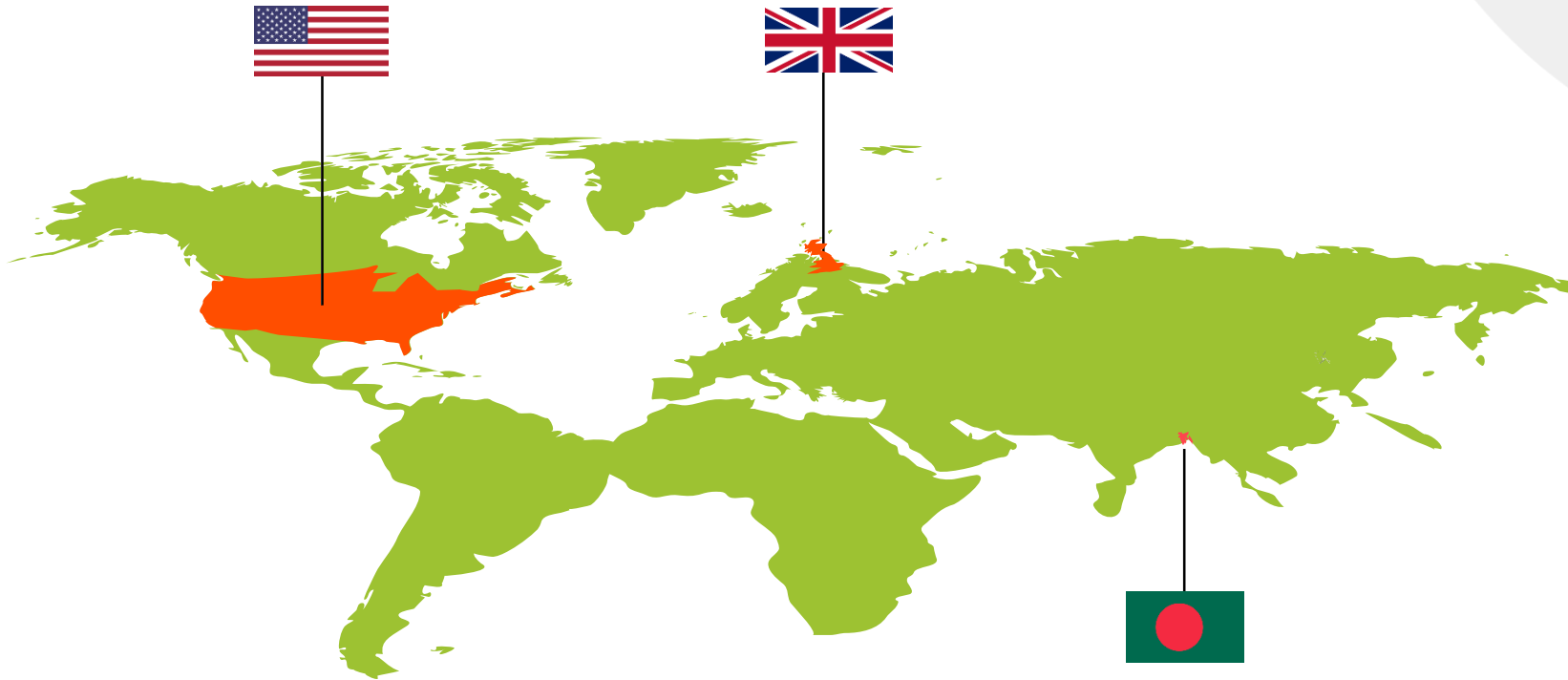
**Account No**: 02329251

**Address**: Innovation Centre, Gallows  
Hill, Warwick, England, CV34 6UW

**Bank/Institution**: Payrnet

**Bank address**: Po Box 1130, Cardiff,  
CF11 1WF

# CONTACT DETAILS



**Bangladesh Office:** Plot No 51(13th Floor), Road 15, Rabindra Sharoni, Sector-03, Uttara, Dhaka-1230



**UK Office:** Innovation Centre, Gallows Hill, Warwick, England, CV34 6UW



**USA Office :** 2953 BENTON ST. Santa Clara CA 95051, United States

[Email-inquiry@texturebd.com](mailto:Email-inquiry@texturebd.com), web: [www.texturebd.com](http://www.texturebd.com)

# OUR FACTORY OVERVIEW



**Anam Garments Ltd**  
EST. 1991

Products/Services:	Ready Made Garments
Primary Business Type :	Manufacturer & Exporter.
QA/QC:	In House, Third Parties & Customer Local Office
Estimated Annual Sales :	US\$ 10 Million
Year Started:	1991
Number of Machine:	350
Number of Employees:	Above 415 Person
Focus Market:	Worldwide
Factory Size (Square Feet) :	60,000 Sq.ft
No. Of Sewing Line :	10
Export Percentage:	100%
Exporting Countries:	UK, USA, CANADA, MEXICO, ITALY, SPAIN, GERMANY & ETC.
Corresponding Bank:	UTTARA BANK LTD. Shimanta Plaza ( 1st Floor ) , Main Road no :03, Section -11 , Pallabi, Mirpur, Dhaka 1216
Factory Head office:	ANAM GARMENTS LTD. Holding no- 02/02, Road- 03, Ward no- 02, Village- Durgapur, Kathra Bazar, Zirabo, Ashulia, Savar, Dhaka - 1341, Bangladesh
Factory Location:	ANAM GARMENTS LTD. Durgapur, Kathra Bazar, Zirabo, Ashulia, Savar, Dhaka - 1341, Bangladesh
Buyer's Name	UK:CFS, KINGDOM LONDON, SPORTS CREATIVE CANADA: BOYZGROUP, MARIE CLAIRE SPAIN : CELOPMAN MEXICO : PIRMA, COPPEL GERMANY: OTTO INTERNATIONAL ITALY: INSTYLESPA
BGMEA Registration Number	<a href="https://www.bgmea.com.bd/member/233">https://www.bgmea.com.bd/member/233</a>
Website	<a href="https://anambd.com/">https://anambd.com/</a>

Thank you