



since 1998

Your Reliable Manufacturer

LUCKY GREEN FASHION GROUP CO.,LTD

[Http://www.luckygreenfashion.com](http://www.luckygreenfashion.com)



SOURCING SUSTAINABLE

HIGH QUALITY

COMPETITIVE PRICE
BEST SERVICE

FAST FASHION APPARELS





Company Profile

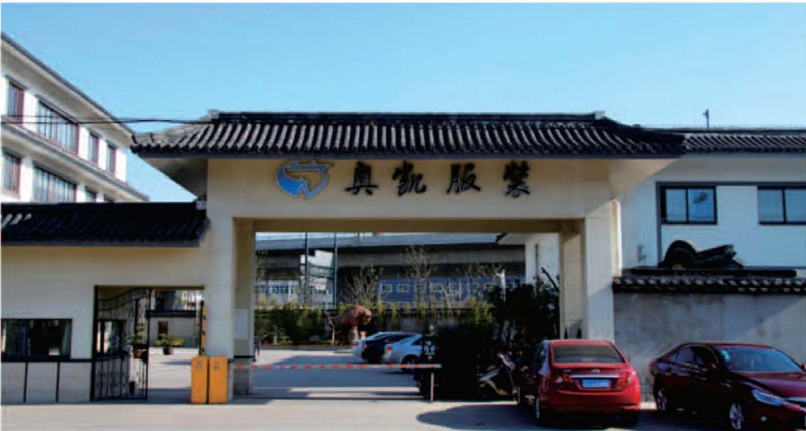
Jiangyin Luckygreen Fashion Group, as a professional fashion group company making textile garments, we fully owned 4 factories in JIANGSU, SHANDONG and ANHUI area with employing more than 2000 workers and a capacity of 4,200,000 units order annually, and in 2005 we had established our Shanghai office in order to provide better service to our customers around Shanghai, and now as we work more and more with European Customers, we had our Germany office established in Dusseldorf, so that we can work with our customer closely in their home market. Our advantage is that we are not a trading but a group company with 4 factories, 2 marketing office and 1 trading department that have more than 20 experienced merchandising team, with the 4 factories we have, we always can find solution for our customers when there is the price matter or order placement issue, so we are quite flexible, furthermore we have some partner factories in Southeast Asia Cambodia, Myanmar, Vietnam and Bangladesh so we are able also to make order in those Countries.

We have been exporting our quality products all over the Europe, Australia and North America for more than 18 years. We can export 350,000 pcs good quality garments each month, which is thanks to our reliable equipment from Germany and Japan. Our normal lead time for bulk production is 80 days to 120 days depends on the order quantity and materials choose, and meantime we can do some fast fashion with a lead time 45 to 60 days if customers can provide a fast approval procedure.

We always pay high attention on customer's requests in term of quality, price, and delivery. We are quite precise and in detail. So trust us as your reliable partner, we will meet all your requirements.



Our Factories



< Lg1 (Established 2001)

Jiangyin Luckygreen Fashion Co.,Ltd. (B of the map)

ADDRESS: The Industrial Area Shengang Town, Jiangyin city, Jiangsu province, China

PRODUCTS: Outerwear/ Down Jacket/Suite/Pants/Dressing...

TOTAL AREA: 15039 SQM

TOTAL WORKER: 480

PRODUCTION LINE: 5

NUMBER OF MACHINE: 183

PRODUCTION CAPACITY: 60,000 PCS/MONTHLY

(Established 1998) LG 2>

Jiangyin Leading Fashion Co.,Ltd. (B of the map)

ADDRESS: No:590 Zhencheng Road.Xiagang Town, Jiangyin city, Jiangsu province, China

PRODUCTS: Shirts/Blouse...

TOTAL AREA: 4020 SQM

TOTAL WORKER: 120

PRODUCTION LINE: 4

NUMBER OF MACHINE: 159

PRODUCTION CAPACITY: 50,000 PCS/MONTHLY



< LG3 (Established 2010)

Lingbi Sempolo Fashion Co.,Ltd. (C of the map)

ADDRESS: Yugou Town, Lingbi City, Anhui Province, China

PRODUCTS: Blouse/Jacket/Suite/Pants/Dressing...

TOTAL AREA: 4080 SQM

TOTAL WORKER: 670

PRODUCTION LINE: 15

NUMBER OF MACHINE: 491

PRODUCTION CAPACITY: 120,000 PCS/MONTHLY



> Lg4 (Established 2007)

Yanzhou Shenkallo Fashion Co.,Ltd. (D of the map)

ADDRESS: Xiao Mei Town, Yan Zhou City, Shandong Province, China

PRODUCTS: Blouse/Jacket/Suite/Pants/Dressing...

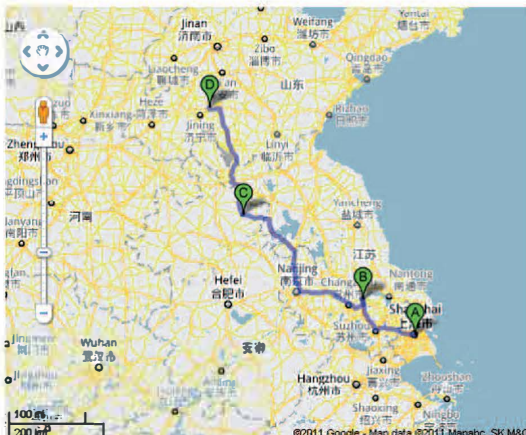
TOTAL AREA: 5017 SQM

TOTAL WORKER: 650

PRODUCTION LINE: 15

NUMBER OF MACHINE: 485

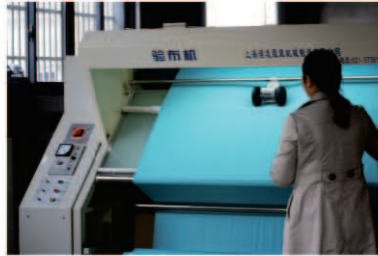
PRODUCTION CAPACITY: 120,000 PCS/MONTHLY



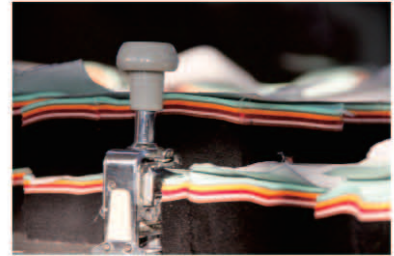
Work Shop View



store room



fabric inspection



cutting & binding



position cut



sewing line



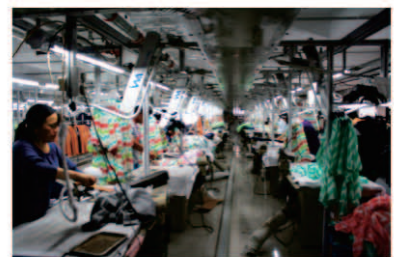
link sewing system



in line quality control



buttoning



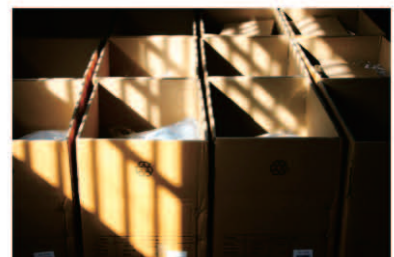
ironing



final quality control



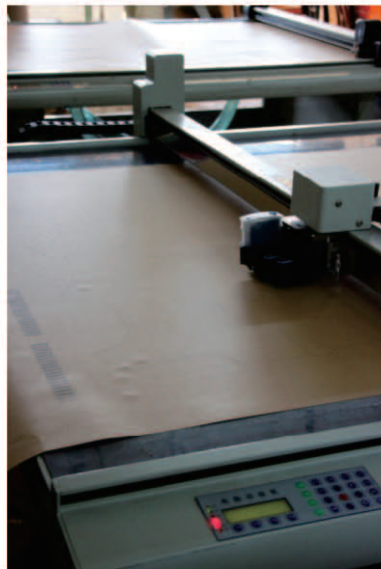
labeling



packing

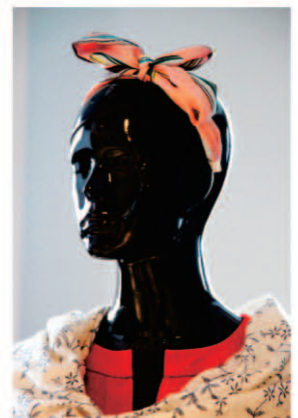
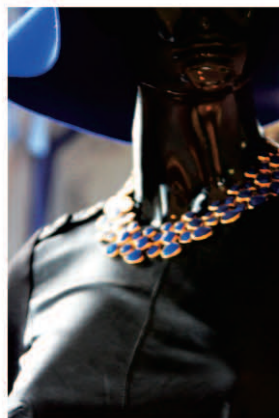


Office



Sample Room
Pattern Room
CAD Room

Showroom & Meeting Room





Client Club & Fabric Sourcing

We have a very beautiful Chinese Traditional style garden consider as a VIP guest club that during the visit, they could go fishing, and it is the place that the owner can invite the guests to have dinner privately.



We had many long term cooperated fabric mills, that can do all kinds of new development, designed fabric and also do fabric QC for all the goods.



Our Clients & Certifications





Accessory Development & Washing Mill



We are good at developing all kinds of accessories that buyer would like go along with the garments.



garment enzyme wash,
stone wash,
pigment dye,
reactive dye,
direct dye
..... **and many more**

We are quite familiar with all kinds of garment washed and dyeing.

Embroidery Mill & Printing Mill





LGWB-001



LGWB-002



LGWB-003



LGWB-004



LGWB-005



LGWB-006



LGWB-007



LGWB-008



LGWB-009



LGWB-010



LGWB-011



LGWB-012



LGWB-013



LGWB-014



LGWB-015



LGWB-016



LGWB-017



LGWB-018



LGWB-019



LGWB-020



LGWB-021



LGWB-022



LGWB-023



LGWB-024



LGWB-025



LGWB-026



LGWB-027



LGWB-028





LGWB-029



LGWB-030



LGWB-031



LGWB-032



LGWB-033



LGWB-034



LGWB-035



LGWB-036



LGWP-001



LGWP-002



LGWP-003



LGWP-004



LGWP-005



LGWP-006



LGWP-007



LGWP-008



LGWP-009



LGWP-010



LGWP-011



LGWP-012



LGWP-013



LGWP-014



LGWP-015

Our Product Women Blouse & Pants



Our Product Women Dressing



LGWD-001



LGWD-002



LGWD-003



LGWD-004



LGWD-005



LGWD-006



LGWD-007



LGWD-008



LGWD-009



LGWD-010



LGWD-011



LGWD-012



LGWD-013



LGWD-014



LGWD-015



LGWD-016



LGWD-017



LGWD-018



LGWD-019



LGWD-020



LGWD-021



LGWD-022



LGWD-023



LGWD-024



LGWD-025

Our Product Women Dressing



LGWD-026



LGWD-027



LGWD-028



LGWD-029



LGWD-030



LGWD-031



LGWD-032



LGWD-033



LGWD-034



LGWD-035



LGWD-036



LGWD-037



LGWD-038



LGWD-039



LGWD-040



LGWD-041



LGWD-042



LGWD-043



LGWD-044



LGWD-045



LGWD-046



LGWD-047



LGWD-048



LGWD-049



LGWD-050



LGWD-051



LGWD-052



LGWD-053



LGWD-054



LGWD-055



LGWD-056



LGWD-057



LGWJ-001



LGWJ-002



LGWJ-003



LGWJ-004



LGWJ-005



LGWJ-006



LGWJ-007



LGWJ-008



LGWJ-009



LGWJ-010



LGWJ-011



LGWJ-012



LGWJ-013



LGWJ-014



LGWJ-015



LGWJ-016



LGWJ-017



LGWJ-018



LGWJ-019



LGWJ-020



LGWJ-021



LGWJ-022



LGWJ-023



LGWJ-024



LGWJ-025



LGWJ-026



LGWJ-027



LGWJ-028



LGWJ-029



LGWJ-030





LGD-001



LGD-002



LGD-003



LGD-004



LGD-005



LGD-006



LGD-007



LGD-008



LGD-009



LGD-010



LGD-011



LGD-012



LGD-013



LGD-014



LGD-015



LGD-016



LGD-017



LGD-018



LGD-019



LGD-020



LGD-021



LGD-022





LGMJ-001



LGMJ-002



LGMJ-003



LGMJ-004



LGMJ-005



LGMJ-006



LGMJ-007



LGMJ-008



LGMJ-009



LGMJ-010



LGMJ-011



LGMJ-012



LGMJ-013



LGMJ-014



LGMJ-015



LGMJ-016



LGMJ-017



LGMJ-018



LGMJ-019



LGMJ-020



Our Product
Men Jacket & Down Jacket & Outerwear

Our Product Men Shirts & Pants



LGMS-001



LGMS-002



LGMS-003



LGMS-004



LGMS-005



LGMS-006



LGMS-007



LGMS-008



LGMS-009



LGMS-010



LGMS-011



LGMS-012



LGMS-013



LGMS-014



LGMS-015



LGMP-001



LGMP-002



LGMP-003



LGMP-004



LGMP-005



LGMP-006



LGMP-012



LGMP-008



LGMP-009



LGMP-010



LGMP-011



Our Product Kids



LGK-001



LGK-002



LGK-004



LGK-005



LGK-006



LGK-007



LGK-003



LGK-009



LGK-010



LGK-011



LGK-012



LGK-008



LGK-015



LGK-016



LGK-017



LGK-018



LGK-019



LGK-013



LGK-014



LGK-021



LGK-022



LGK-023



LGK-024



LGK-025



LGK-020



LGK-026



LGK-027



LGK-028



LGK-029



Our Factories View

		LG 1	LG 2	LG 3	LG 4	TOTAL
Total Building areas (Sqm)	Store/Warehouse area	5000	120	680	100	5900
	Cutting building area	839		350	500	1689
	production building area	9200	3900	3050	4417	20567
	Total building area	15039	4020	4080	5017	28156
Total Headcount (Employees)	Managements	80	40	40	40	200
	Employee & Workers	400	280	630	610	1920
	Total	480	320	670	650	2120
Number of Production Lines		5	4	15	15	39
Number of Machines per Line		25-30	25-30	25-30	25-30	
Monthly Production Capacity		300,000-350,000 Pieces				

Number of Available Machines

	LG 1	LG 2	LG 3	LG 4	TOTAL	
1 needle Lockstitch	125	100	375	369	969	SETS
2 needle Lockstitch	3	2	21	21	47	SETS
1 needle Chainstitch	3	2	6	6	17	SETS
2 needle Chainstitch	4	4	6	6	20	SETS
4 needle Chainstitch	4	4	5	5	18	SETS
Multi needle Chainstitch	2	2	5	5	14	SETS
3 thread Overlock	3	3	20	20	46	SETS
4 thread Overlock	4	4	4	4	16	SETS
5 thread Overlock	7	6	26	26	65	SETS
Flatlock	1	1	5	5	12	SETS
Buttonhole	6	8	5	5	24	SETS
Buttonsew	6	8	5	5	24	SETS
Bartack	5	6	2	2	15	SETS
Press for snap button Rivet press	4	3	2	2	11	SETS
Snap button press	3	3	2	2	10	SETS
	183	159	491	485	1318	

Machines Brand: **JUKI** **Kingtex** **brother** **PEBASUS** **Eastman**



HIGHLIGHTS

Production lead time • 80 -120 days

Samples lead time • 7 -15 days

MOQ • 1000 pcs/style

AQL • 2.5/4.0 level 1

Monthly Production Capacity • 300,000 - 350,000 Pieces

Computer Technology • CAD System

Production Process • We are a **Metal free** Facility. No metals small part (like pins,clip, staples etc.) are allowed in production floor to avoid any kind of contamination will the garment

Product • Women/Men/Kids line of the Blouse/Tops/Jacket/Pants/Suite/
Fake Fur/PU Jacket Down Jacket/Outerwear.

Gender • Kid 3 to 16 years **5%**, Women **75%**, Men **25%**.

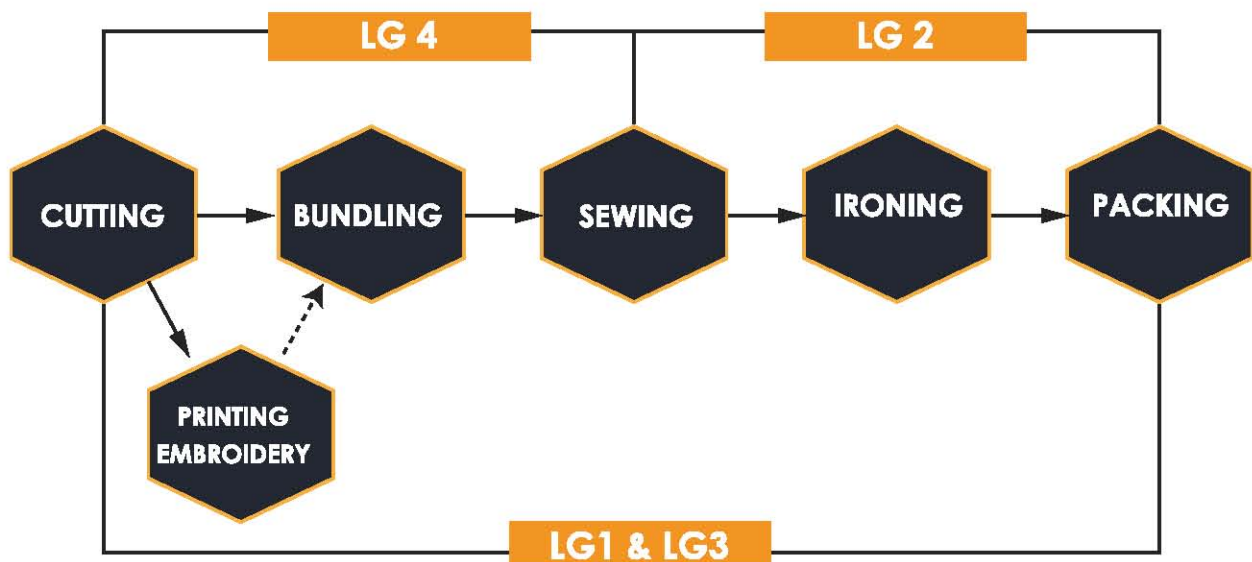
Fabric quality • Yarn Dyed Checks & Stripes, Printing, Cotton, Polyester, Nylon, Silk, Jacquard, Wool, Fake fur, Real fur, Arcylic, Spandes, Linen
.....and many more

Fabric sourcing • China, Korea, Taiwan

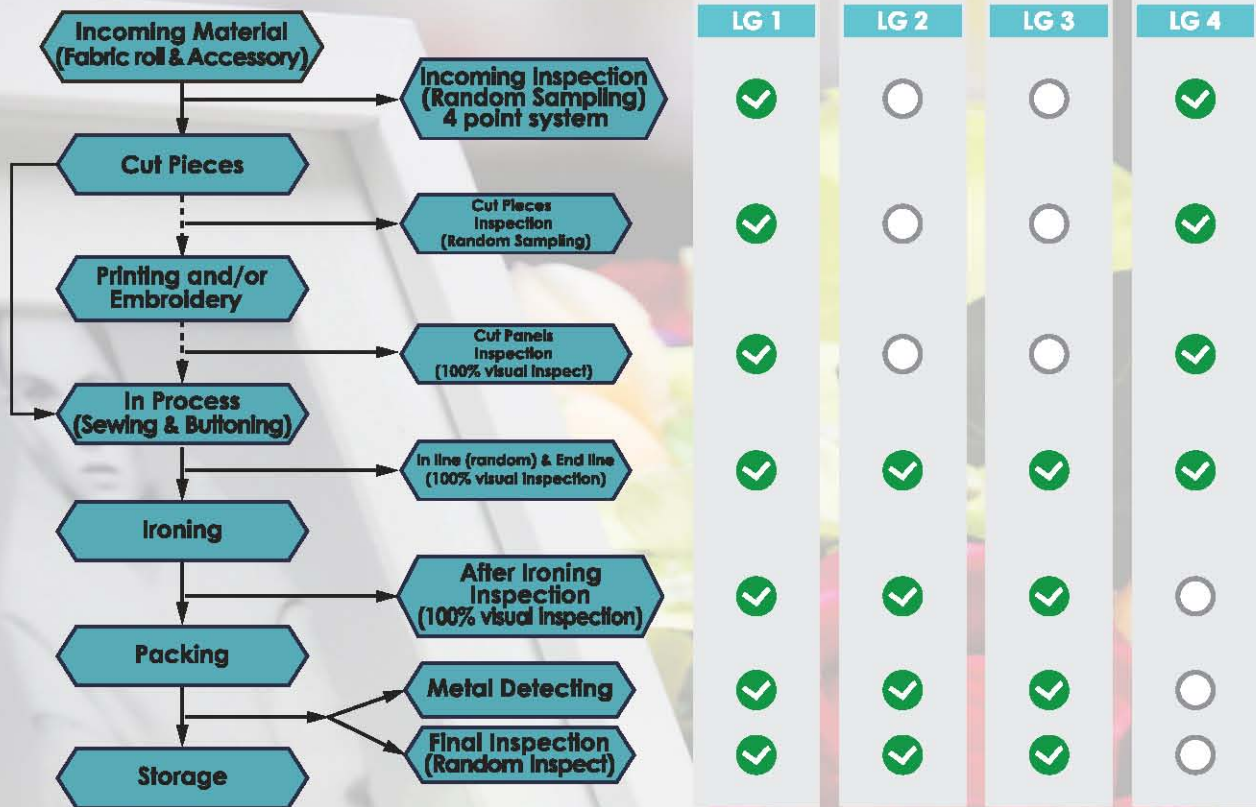
Embellishment • Prints, Embroidery, Studs, Rhinestone, Embossing and Various other Application.

Garment Treatment • Various Washing, Garment Pigment Dye,
.....and many more.

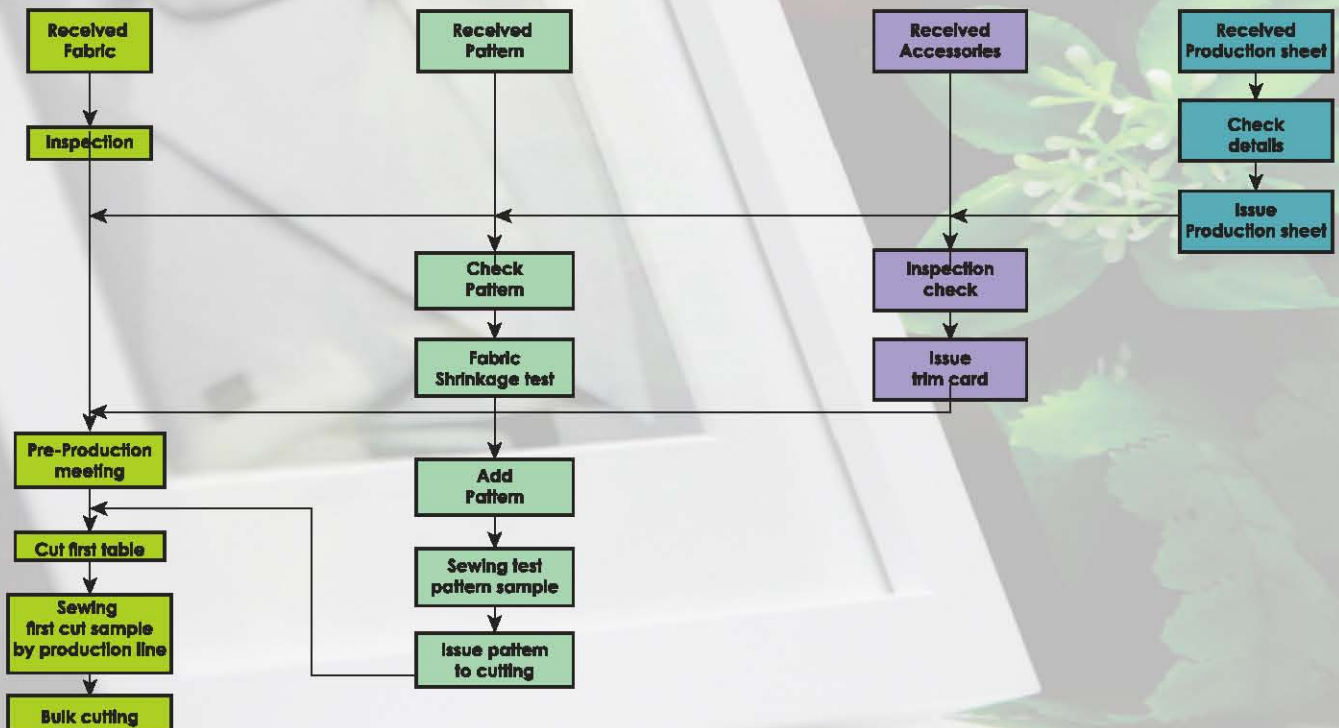
Production Process



Quality System



Pre-Production Process





Contact us



Jangtseemann GmbH (Jiangyin Lucky Green Fashion Group. Germany Office)

Handel und Beratung

Münsterstraße 246 40470 Düsseldorf Deutschland

Tel.: +49 211 972643-02 Fax: +49 211 972643-18

Contact person: Mrs Grace Lee

E-Mail: gracelee@jangtseemann.com/gracelee17@163.com



Jiangyin Lucky Green Fashion Group. Shanghai Office

RM 209 New Time Garden Chamber No. 1100 Gudai Road, Shanghai P.C.: 201102

Contact: Mr. William Chen

Tel: +86 (21) 34171028 Fax: +86 (21) 34171028 Cell phone: 86 13501718520

Email: william.chen@luckygreenfashion.com/william_chen513@vip.163.com



Jiangyin Lucky Green Fashion Co., Ltd.

The Industrial Area Shengang Town Jiangyin City, Jiangsu, China

Tel: +86(510) 86685588 Fax: +86(510) 86685560

Contact person: Mrs Summer Xia

Email: summer.xia@luckygreenfashion.com