



NEWLEAF GROUP

NEWLEAF
TRADE

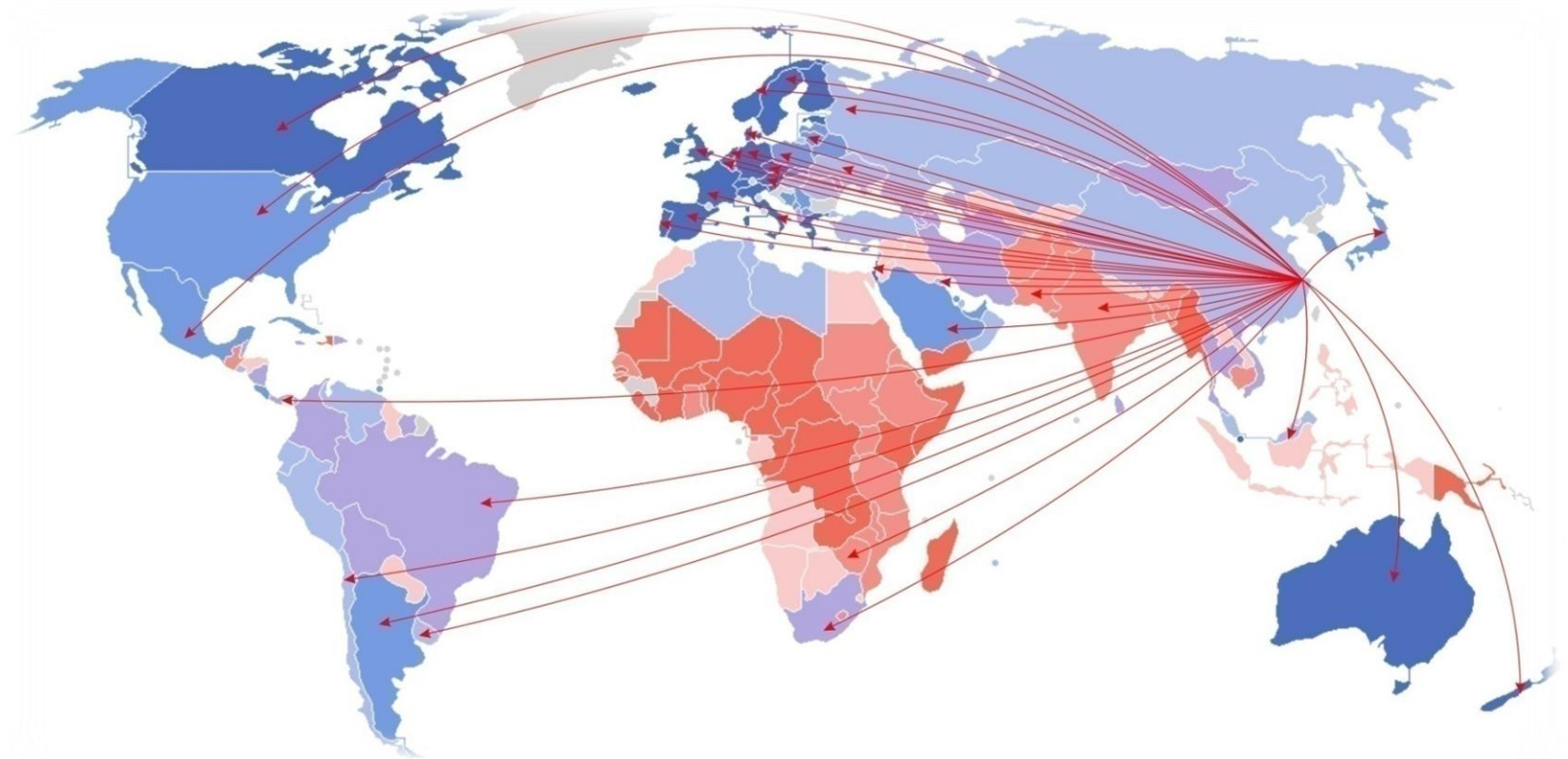
MISTIC FASHI

SHAOXING NEWLEAF FOREIGN TRADE CO.,LTD
绍兴市新叶对外贸易有限公司



- Established in 1998, Newleaf is one of the leading traders and manufacturers of *shirts, pants, knitted T-shirts, sweaters for men and women, skirts, blouses and dresses for ladies*, and have an annual turnover of more than 20 million dollars.
- 绍兴市新叶对外贸易有限公司创建于1998年，是一家专业经营和生产各类男女衬衣，西裤，休闲裤，女裤，套装，裙子，针织T恤等产品服装的公司，年进出口总额达贰仟多万美金。

Export to about 30 countries worldwide
出口全球30多个国家

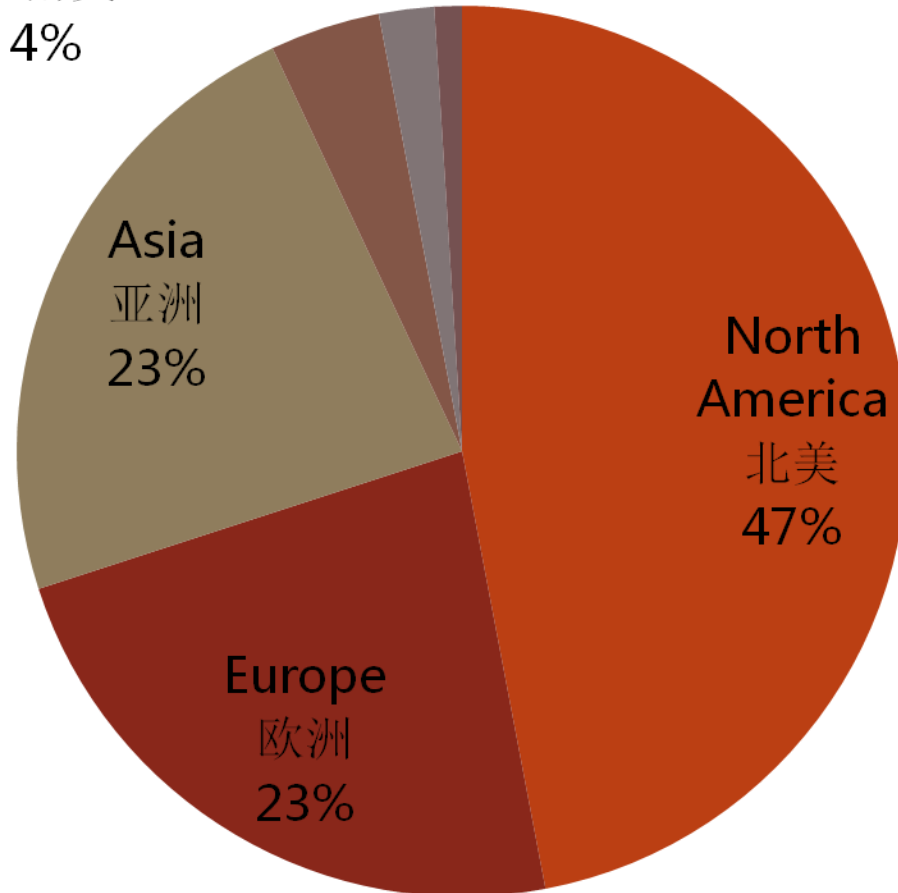


MARKET SHARE 市场份额

Mid & South
America
中南美
4%

Africa
非洲
2%

Oceania
大洋洲
1%



over 100 valued regular customers
拥有优质客户逾100家

FOREVER 21®

Best Mountain

sweet
SALT

RD style

zolla

NORTHLAND
PROFESSIONAL

La Classe Couture

REDTAG
always fashionable. always affordable.

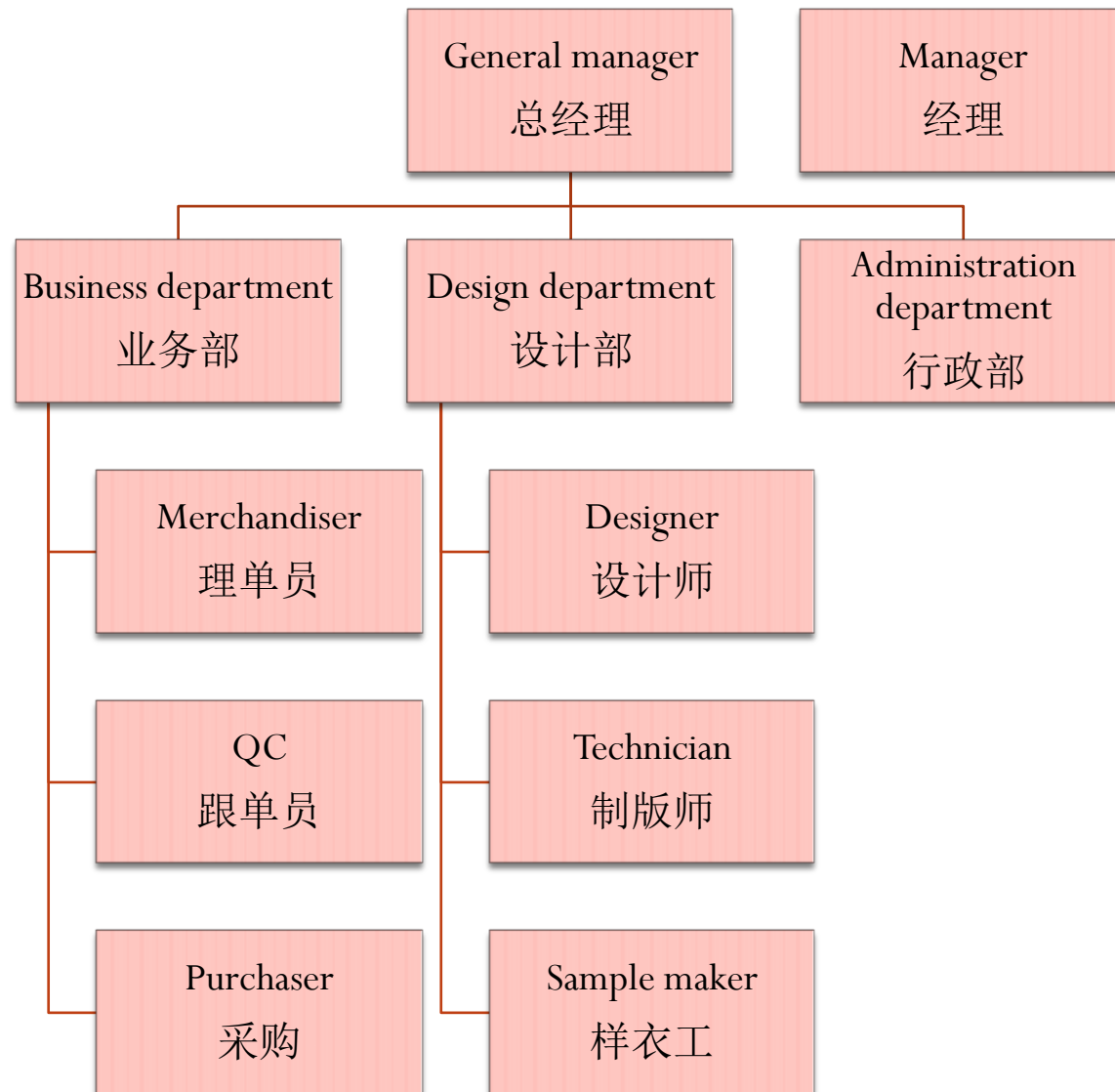
RAZZLE DAZZLE®

Etam

CYRILLUS
PARIS

L O L A L I Z A

Company structure 公司结构



COMPANY IMAGE 公司形象



SHOWROOM 展示间



SAMPLING ROOM 样衣间



Advantage of geographic location

地理优势

Shaoxing is located in Yangtze River Economic Delta, which is one of the most active economic areas with the highest degree of openness , the best innovation ability and attracting most labours. Near Hangzhou City in west, Ningbo in east, and Shanghai in north, goods can be shipped from Shanghai Port and Ningbo Port .

- 位于长三角经济区，中国经济最具活力、开放程度最高、创新能力最强、吸纳外来人口最多的区域之一，未来发展势头强盛
- 西邻杭州，东接宁波，北靠上海，依托上海港，宁波港



Shaoxing view 绍兴一览



CHINA TEXTILE CITY

中国轻纺城

- With a total construction area of 3.26 million square meters, more than 30,000 kinds of fabric, 100 thousands of customers per day, and a turnover of 180 million yuan, China Textile City is currently the largest and fully equipped textile distribution center and Asia's largest textile professional market with most varieties of fabric.
- 总建筑面积达326万平方米，经营面料3万余种，日客流量10万人次，日成交额1.8亿元，是目前全国规模最大，设施齐备，经营品种最多的纺织品集散中心，也是亚洲最大的轻纺专业市场。

CHINA TEXTILE CITY

中国轻纺城



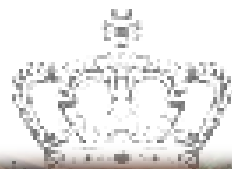
Advantage of design 设计优势

- 专业设计团队，把握时尚热点，紧跟时尚潮流
- 每周出新款，每月推荐系列新款供客户选择



Our design team is professional, specialized in grasping hot fashion characters, and closely following the fashion trend. Productive as them, we have new styles every week and can advise a series of new styles for customers' choosing.

LADIES 女装



EST. 1972



PARIS
EST. 1972

MENS 男装



PARIS
EST. 1972



14115105-1 ▶

◀ 14115105-2









Advantage of factories 工厂优势

Specialized in knitted and woven goods, and have the capacity of 300 thousand per month

专业针梭织服装加工厂，月产量30万件



CERTIFICATION APPROVED

工厂认证



ADVANTAGES 优势

An enormous amount of exposure on varieties of shows attract a lot of attention, support and approval from all sectors of society.

持续保持曝光度，受到各界支持认可



Honor 公司荣誉

Repeatedly won the honorary title of “the top ten export-oriented enterprises”, “export-oriented superior enterprises” and “foreign trade trustworthy enterprises”, and has become a member of CCCT

* 多次荣获外向型经济十强企业、外向型优胜企业和对外贸易诚信企业荣誉称号

* 中国纺织品进出口商会会员



A woman with short brown hair, wearing a black high-necked dress with a mesh bodice and a grey textured cardigan, stands outdoors. She is leaning her right arm against the trunk of a large tree. The background shows a blue sky with light clouds and green foliage. The text "THANKS FOR WATCHING" and "HOPE COOPERATION" is overlaid in a white serif font with a reflection effect.

THANKS FOR WATCHING
HOPE COOPERATION

谢谢观看
期待合作