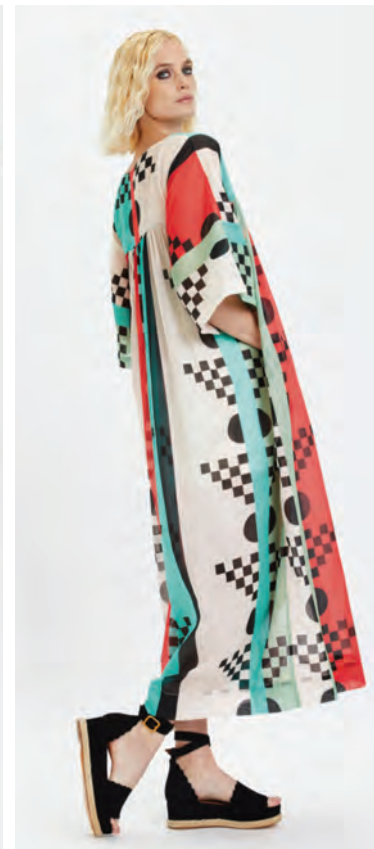




# FASHION-ENTER LTD

*Lookbook*



## O 1 • Louisa Parris

Luxury contemporary womanswear -  
Dedicated to colour, line and drape.



## O 2 . SIOBHAN MOLLOY

Luxe womanswear - Ready-to-wear, sustainable & slow fashion featuring our exclusive prints.



## 03 • Zoe Corsellis

Luxe Womenswear - A brand designed to show off your personality in all its glory.



## O 4 • No Uniform

Luxe Unifroms - NOBU Collection.





## 05 • Herons Ghyll

Cosmopolitan Tailoring - Made to  
measure tailoring menswear brand.

# 06 • Herons Ghyll

Cosmopolitan Tailoring - Made to  
measure tailoring menswear brand.



## 07. IVAN CLOTHING

Menswear - Organic, recycled, and deadstock fabrics from Britain, France, Germany & Japan.



# 08 • Jake Hall

Contemporary Soft Tailoring- Clean  
aesthetic, simple beautiful cut shapes.





**09 • Luke Derrick**  
Contemporary Menswear - Elegance  
under Pressure.

# 10 • Studio EHR

*Activewear - Consciously designed, sustainability  
sourced & responsibly made premium movement wear.'*



# 11. CONTOUR

Activewear - Sustainable Athleisure  
Delivering Body Confidence.



## 12. Kamba

Luxury swimwear - Unique products  
with a feminine aesthetic.





## 13 • Kimberly London

Luxe Swimwear - British made Swimwear,  
designed by Kimberly Garner.



## 14. GEO

Activewear - Fashion brand intended to challenge, subvert & represent a young presence



## 15. GymShark

Luxe menswear Athleisure -  
Founders Collection.

# 16. Bravado

Rolling Stones No.9 Upcycled  
Limited Edition Line





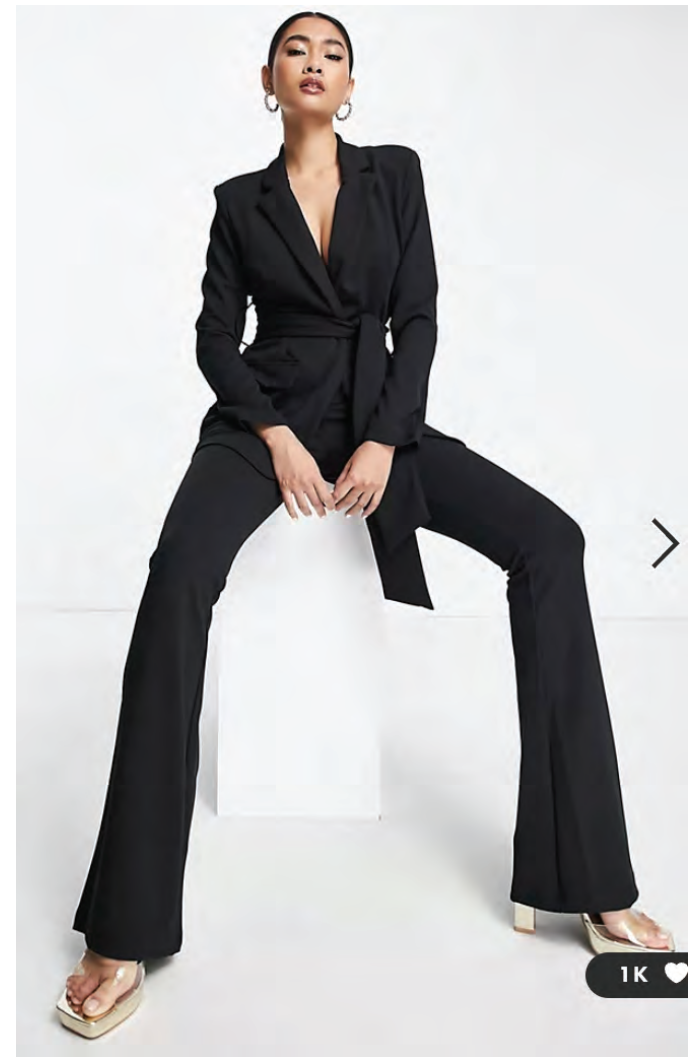
## 17. **Petite Pearl Lowe**

Bespoke childrenswear - A whimsical collection of vintage circus-inspired costumes



## 18. ASOS.COM

Contemporary Retailer -  
Trend and speed focused womens  
and menswear online brand





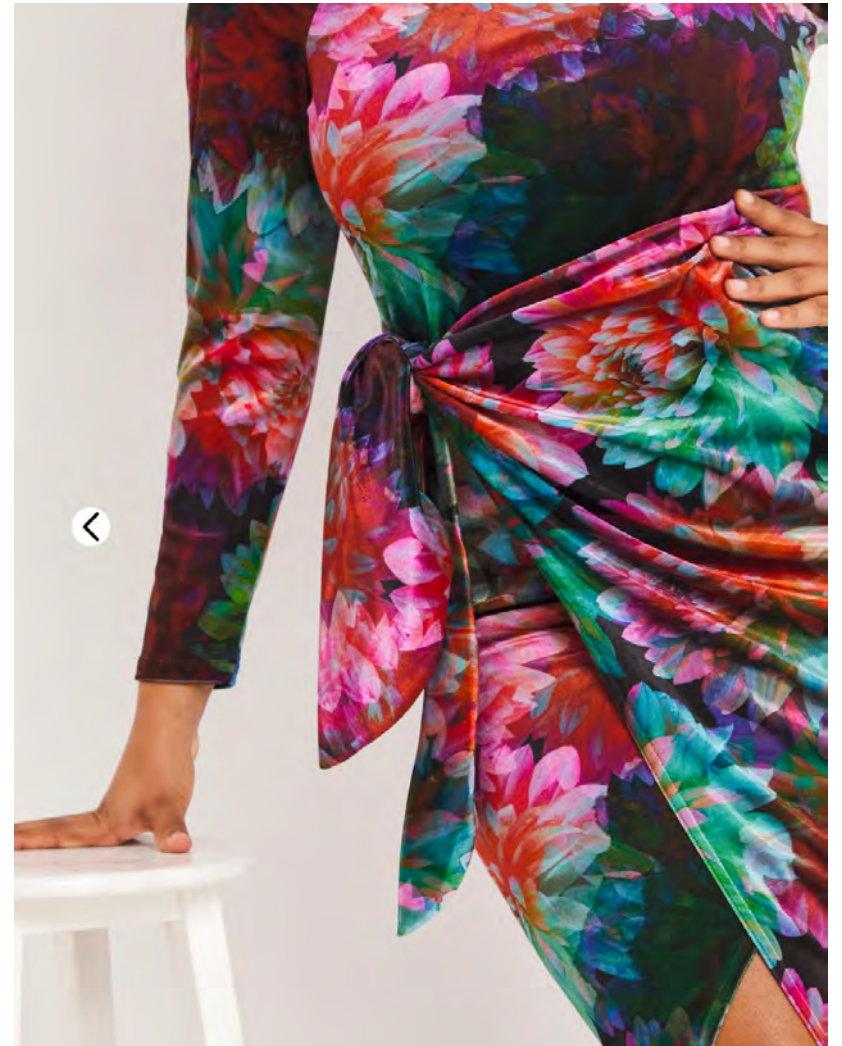
## 19. ASOS.COM

Contemporary Retailer -  
Trend and speed focused womans  
and menswear online brand



## 20 • Simply B

Curve Womenswear Fashion -  
Trend and speed focused curve  
womans brand



## 21. Simply B

Curve Womanswear Fashion -  
Trend and speed focused curve  
womans brand

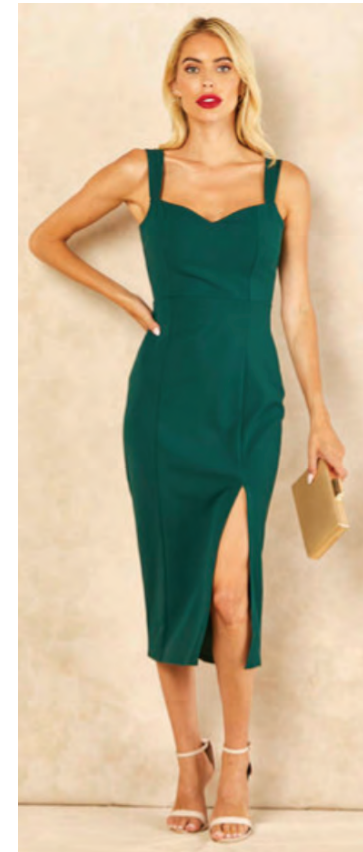
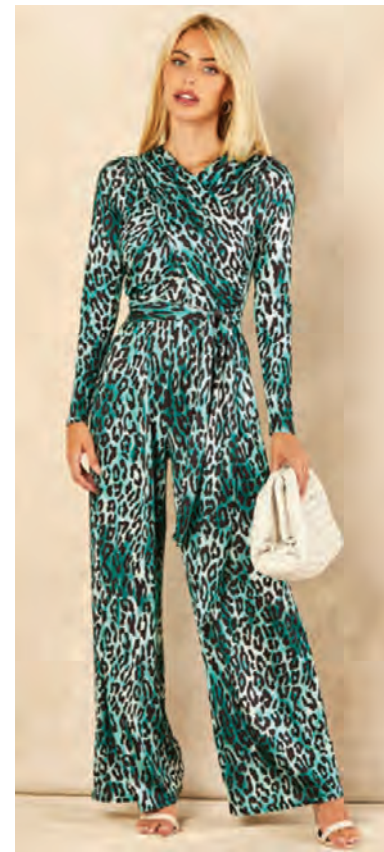




## 22 • Plisse Dream

Contemporary womanswear -  
Dedicated to colour, line and drape.





## 23 • Natures Animal

Contemporary womanswear -  
Dedicated to colour, line and drape.

## 24 • The Classics

Contemporary womanswear -  
Dedicated to colour, line and drape.



## 25 • Louise Korner

Contemporary Bridal wear - British made  
Bridal wear with a contemporary twist.



# Contact us

## **Fashion-Enter Ltd | FashionCapital | FCFTA (HO)**

**A:** Unit 4, 13/14 Crusader Industrial Estate, 167 Hermitage Road, Haringey, London, N4 1LZ  
**T:** 0208 809 3311

**E:** [info@fashion-enter.com](mailto:info@fashion-enter.com) | [Education@fashion-enter.com](mailto:Education@fashion-enter.com)

**W:** [www.Fashion-Enter.com](http://www.Fashion-Enter.com) | [www.FashionCapital.co.uk](http://www.FashionCapital.co.uk) | [www.FCFTA.com](http://www.FCFTA.com)

**Fb:** @fashioncapital | **In:** @fashioncapitaluk | **Tw:** @FashionCapital | **Li:** @fashioncapital

## **FCFTA (Leicester)**

**A:** Phoenix House, 1st Floor, 1 King Street, Leicester, LE1 6RN  
**T:** 0116 436 2560

**E:** [Fcftaleicester@fashion-enter.com](mailto:Fcftaleicester@fashion-enter.com)

**Fb:** @FashionTechnologyAcademy | **In:** @fashiontechnologyacademy | **Tk:** @fashiontechnologyacademy

## **FC Designer Workspace**

**A:** 9 Durham Road, Islington, London, N7 7FB  
**T:** 0203 026 0399

**E:** [FCdesignerworkspace@fashion-enter.com](mailto:FCdesignerworkspace@fashion-enter.com)

**W:** [www.FCdesignerworkspace.co.uk](http://www.FCdesignerworkspace.co.uk)

**In:** @fcdesignerworkspace

## **FC Designer Collective**

**A:** 113-115, Fonthill Road, London, N4 3HH  
**T:** 0203 026 0388

**E:** [FCdesignercollective@fashion-enter.com](mailto:FCdesignercollective@fashion-enter.com)

**In:** @fcdesignerworkspace

