

COMPLIANCES AND CERTIFICATIONS



STANDARD 100



FSC
www.fsc.org
FSC® A000521



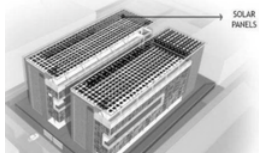
BSR | HERproject



SOCIAL AND ENVIRONMENTAL RESPONSIBILITY

SOLAR PANELS

The building features 15,000 SF of rooftop solar panels generating 12,000 units monthly. This eliminates reliance on the State Grid during peak hours. Excess off-peak power is stored locally or fed back to the grid, significantly reducing dependence on fossil-fuel-based electricity.



BOARD OF HONOURS



CONTACT US

Website:

www.century-overseas.com

LinkedIn:

<https://www.linkedin.com/company/century-overseas-com/>

Email:

info@century-overseas.com

Unit I: 37 DLF, Industrial Area, Kirti Nagar, New Delhi -110015 (Delhi, India)

Unit II: 6/6 & 6/7, Industrial Area, Kirti Nagar, New Delhi -110015 (Delhi, India)

Unit III: Plot no. 292, Phase-2, Udyog Vihar, Gurugram -122016 (Haryana, India)

Century Overseas

SINCE 1991

AN ISO 9002 COMPANY

ABOUT US

Founded in 1991, Century Overseas has grown into a trusted manufacturing partner for global fashion brands. Our belief has always been that lasting success comes from consistency, strong relationships, and respect for the craft.

Over three decades, we have developed expertise in woven garments, leather garments, and accessories. These form the core of our work, allowing us to create collections that range from occasion wear to versatile everyday styles. Our progress has been steady and rooted in trust. By adapting to the evolving fashion landscape and listening closely to our clients, we have built enduring partnerships based on collaboration and transparency. With a monthly garment production capacity of 285,000 units and an annual turnover of over USD 50 million, we continue to grow, though our true measure of success is the confidence our partners place in us.

At the heart of Century Overseas is a team of skilled professionals whose dedication and craftsmanship shape every garment and accessory. We foster an environment where tradition and innovation come together, ensuring each product is made with care and precision.

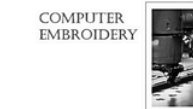
MR. RAJNEESH GANDHI
CEO



HIGH FASHION
DESIGNING TEAM



CLO 3D



COMPUTER
EMBROIDERY



HAND
EMBROIDERY



DOWN FILLING



PRODUCTION
LINE



WASHING



PACKING

