



Your end-to-end Fashion AI Suite

Singapore | India | Indonesia

Explore the One-Stop Fashion AI Suite

Design, Cataloguing & Production

AI DESIGN

Product Design
Sketch Generator
Seamless Prints & Graphics
Apply Prints

AI VISUALIZATION

Virtual Trial
Video Generation
Background Change
Bulk Catalogue Generation

AI TECHPACKS

AI-Powered Techpacks

All in a few minutes

GTM & Merchandising

AI SOURCING

AI-Powered
Design-to-Launch Collections

AI Design

Ideas Visualized using Product Design

**Prompt Used*

Generation 1

IDEA TO VISUAL

white oversized dress laid flat or on hanger, clean professional product photography, no model visible



Generation 2

TWEAKING DESIGN

remove the extra fold from between the dress, keep the display of the dress the same on the hanger, flat lay



Generation 3

AESTHETICS

change the colour of the dress to a white and light purple gradient dyed effect, keep the display same on the wooden hanger, flat lay



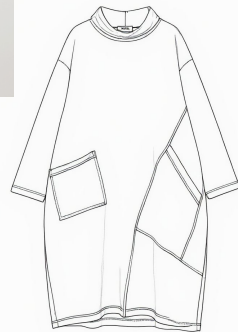
Generation 4-5

SKETCH RATIONALIZATION

Remove the hanger from the display



using the Sketch Generator tool



Love It!



... or wait actually

Iterative Design for those Precise tweaks

TOOL USED: Precise Editing



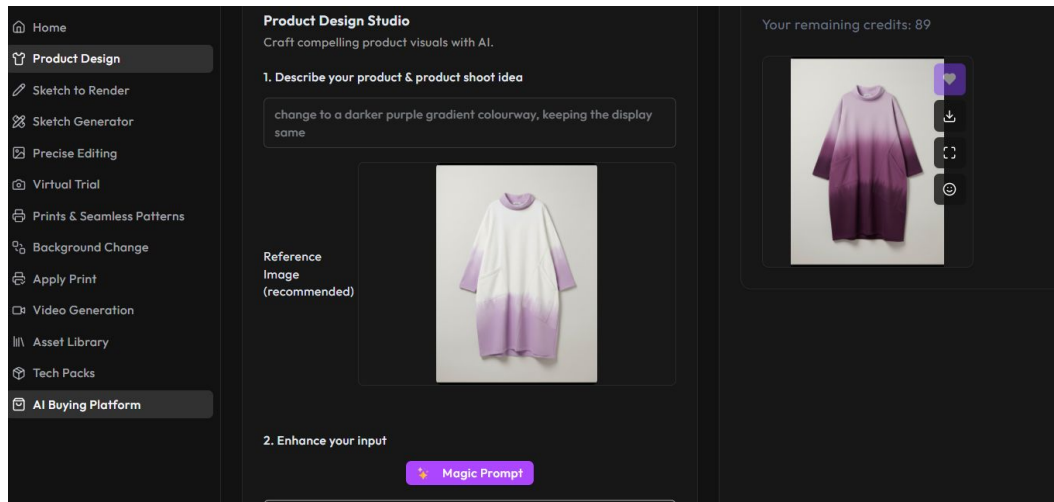
Generation 6 MOCK NECK DETAIL

Make the folded mock neck a light purple



Iterative Design for more Variations

TOOL USED: Product Design

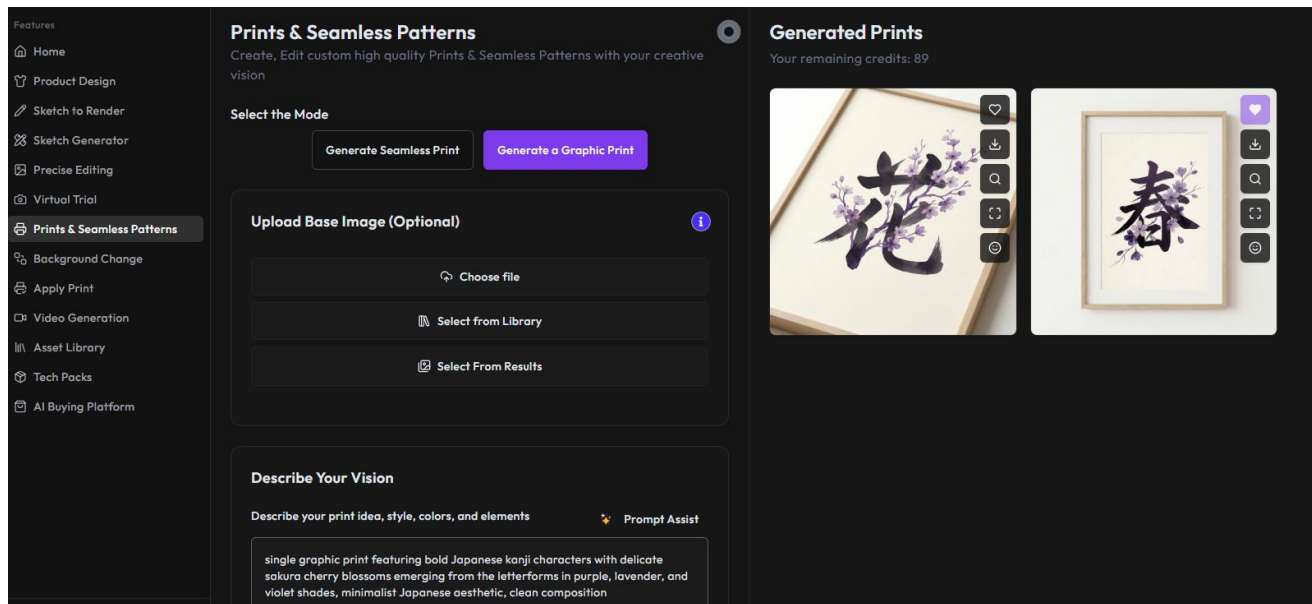


Generation 7 DEEPER COLOURWAY

Change the colourway of the dress to a light purple to dark purple gradient, keep the display the same flat lay display



Why stop at Silhouettes and Colourways?

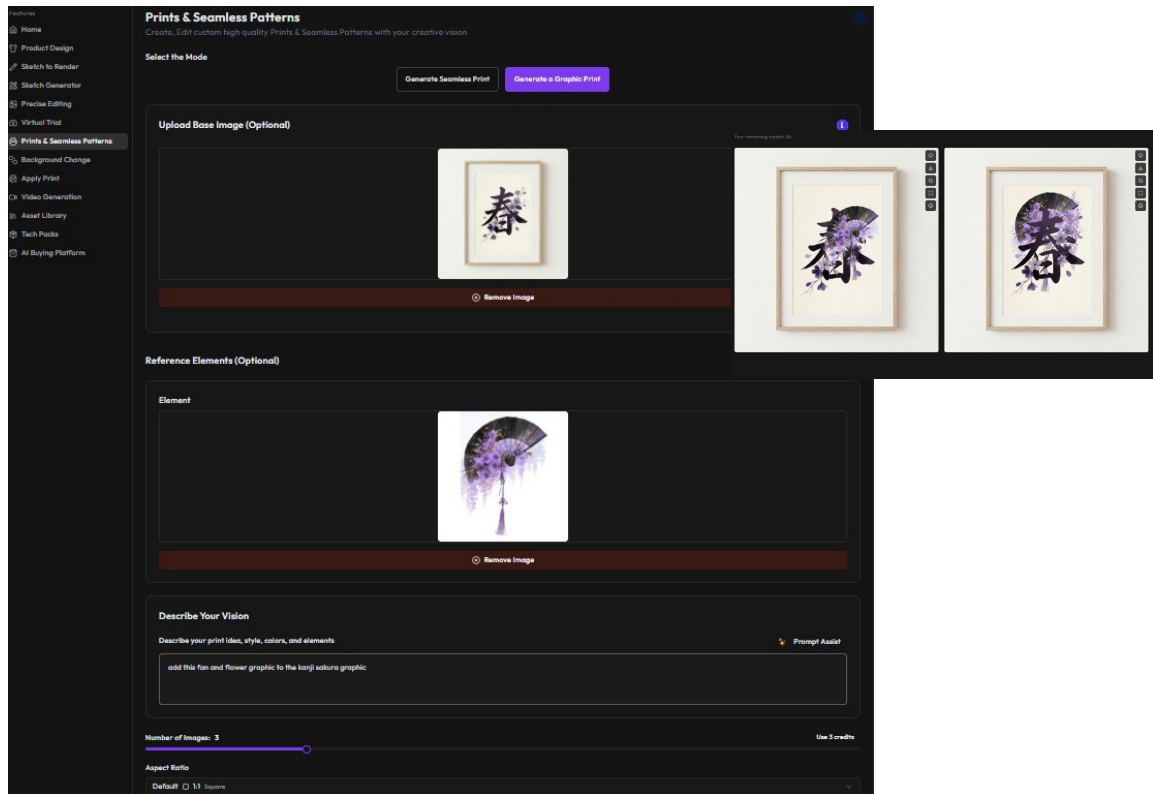


Generation 8 GRAPHIC

single graphic print featuring bold Japanese kanji characters with delicate sakura cherry blossoms emerging from the letterforms in purple, lavender, and violet shades, minimalist Japanese aesthetic, clean composition

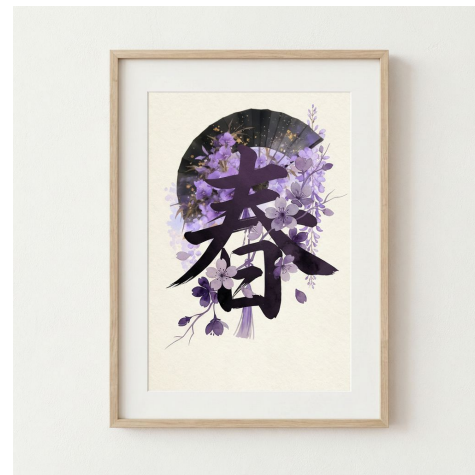


Spice up your Graphics with Elements

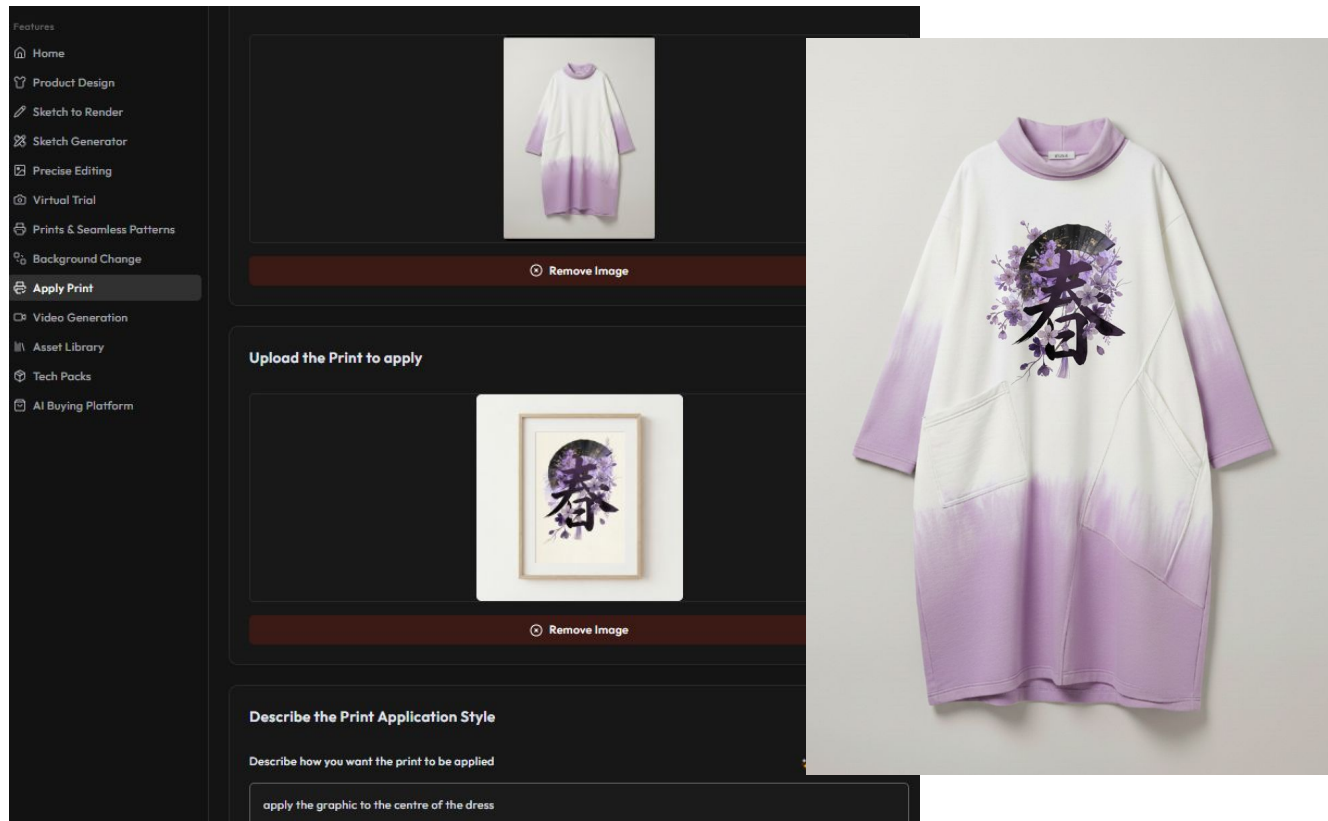


Generation 9 "THE" GRAPHIC

add this fan and flower graphic to the kanji sakura graphic



Apply Graphics (or even Prints) on Garments



Generation 10 PRINTED DRESS

*apply the graphic to the centre of
the dress*

Generate Seamless Prints from Scratch

Features

Home

Product Design

Sketch to Render

Sketch Generator

Precise Editing

Virtual Trial

Prints & Seamless Patterns

Background Change

Apply Print

Video Generation

Asset Library

Tech Packs

AI Buying Platform

Prints & Seamless Patterns

Create, Edit custom high quality Prints & Seamless Patterns with your creative vision

Select the Mode

Generate Seamless Print

Generate a Graphic Print

Upload Base Image (Optional)

Choose file

Select from Library

Select From Results

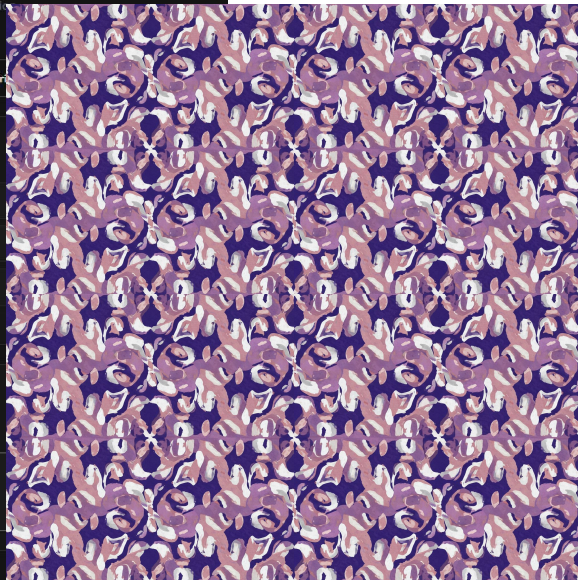
Describe Your Vision

Describe your print idea, style, colors, and elements

purple, mauve and light grey abstract print

Number of Images: 1

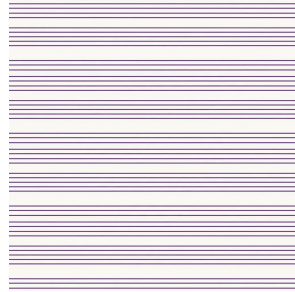
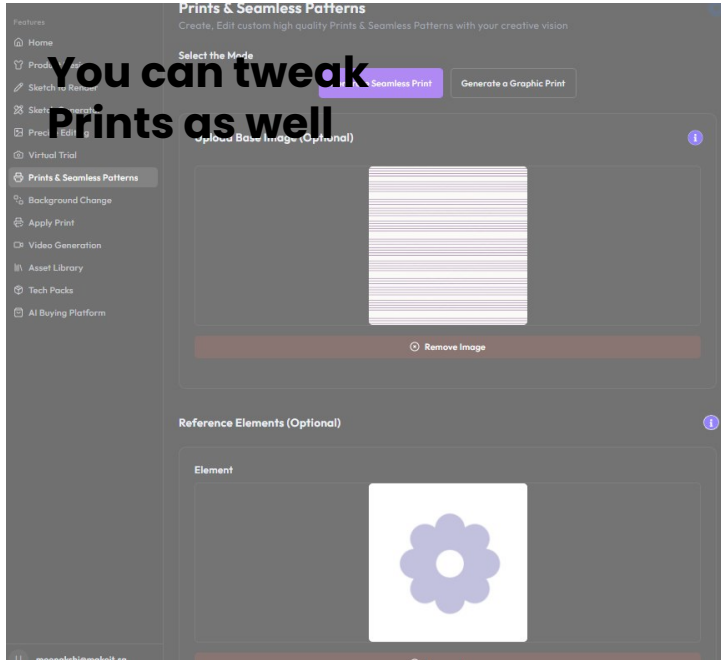
Aspect Ratio



Seamless Print

*purple, mauve and light grey
abstract print*

And in case you were wondering...

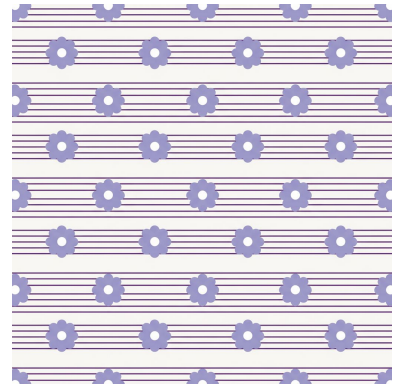


Base Pattern



Reference Element

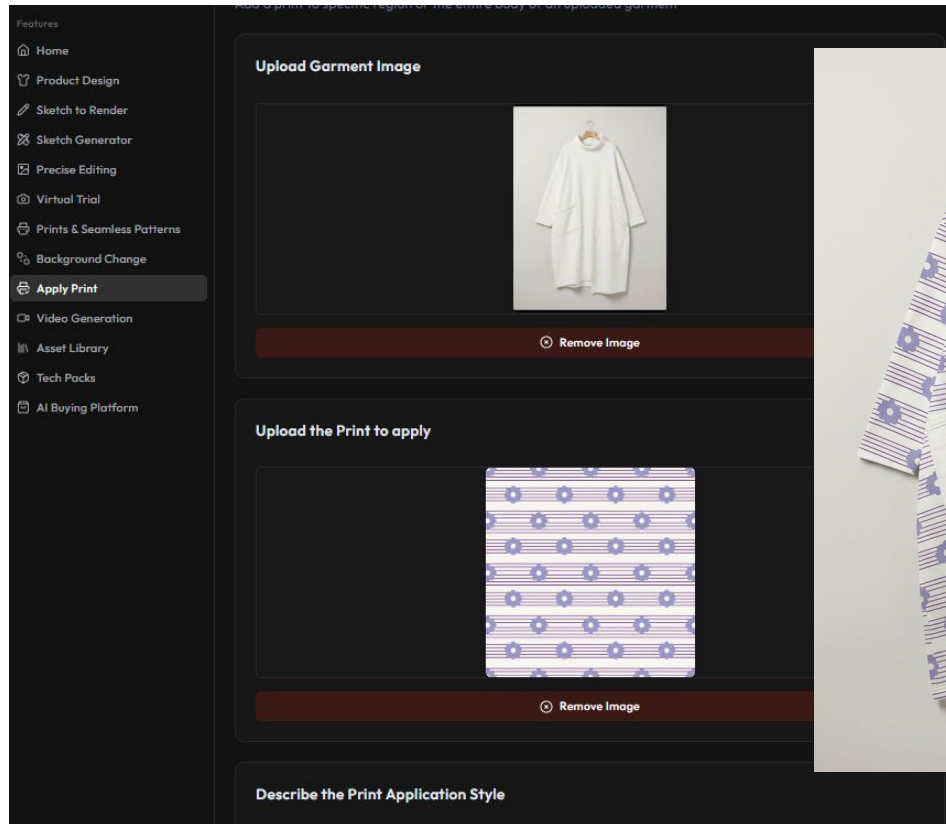
=



Generated Pattern

apply the flower graphic in an aesthetic manner to the line print

Apply Print works “seamlessly” with prints as well !

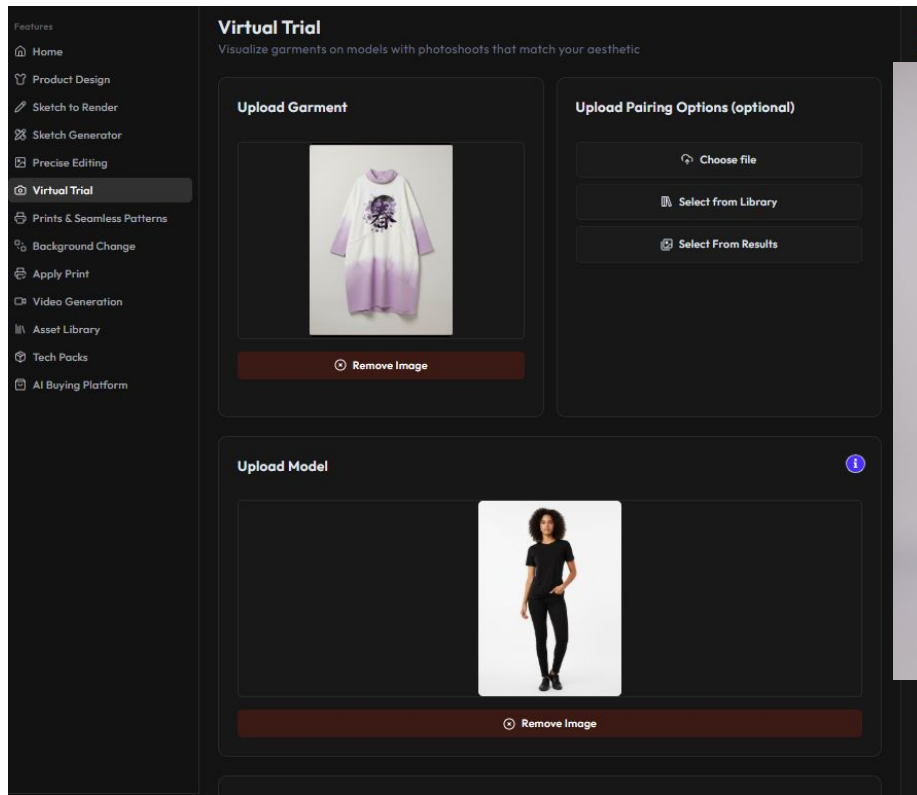


Printed Dress

*apply the print all over the dress
except the mock neck and
pockets*

AI Visualization

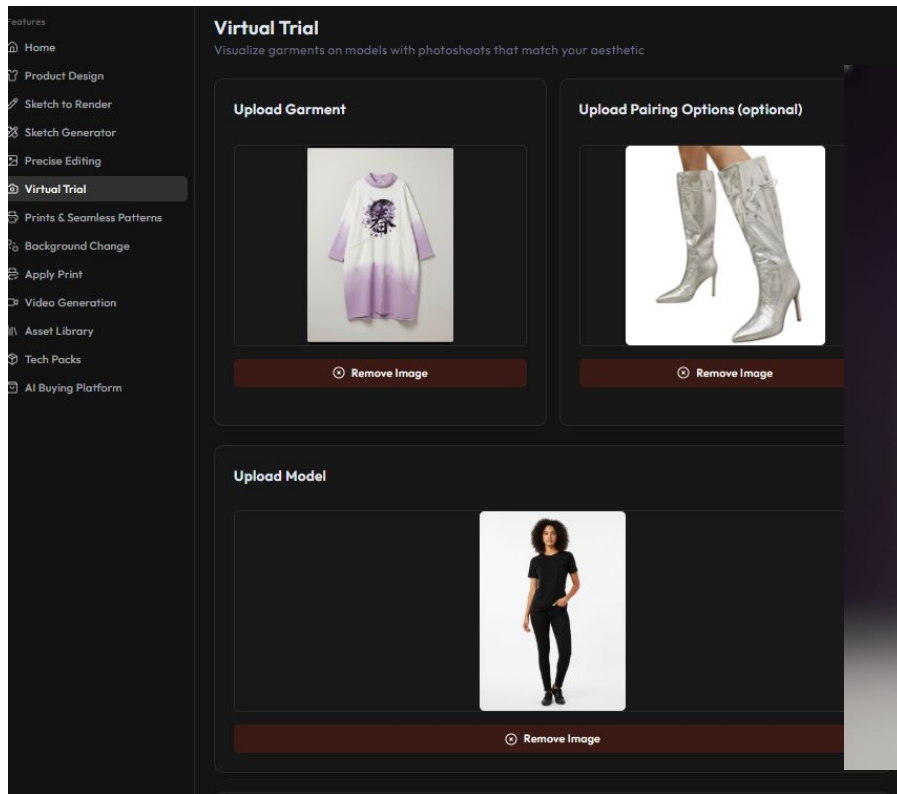
View your Designs and Create Catalogue Content !



Generation 11 Daniela tries the Dress

the model wearing the dress, with shiny purple knee length boots, dark black thin rimmed sunglasses in a light purple and grey studio, editorial style photoshoot, low angle shot as the model poses in a vogue manner while looking at the camera and adjusting her sunglasses

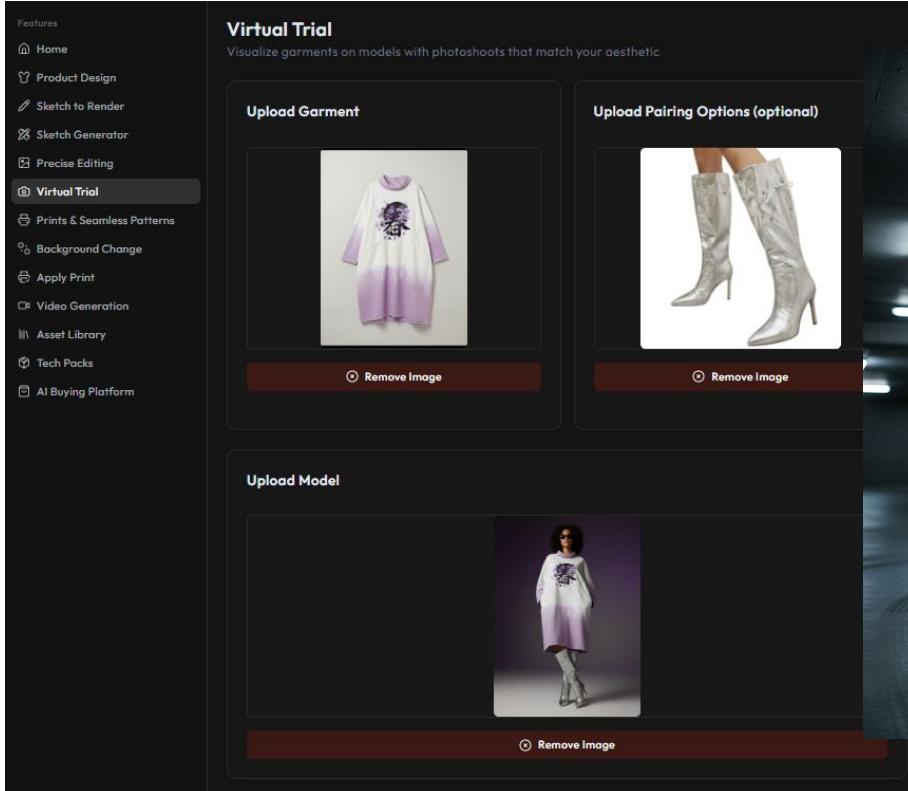
View your Designs and Create Catalogue Content !



Generation 12 The Editorial Shot

*the model wearing the dress with the **referenced silver boots**, dark black thin sunglasses in a **dark purple and grey gradient studio**, editorial style photoshoot, low angle shot from below the eye level of the model as she leans against a wall with dramatic high contrast lighting adding a cinematic flair to the shoot*

Iterate your Marketing Content

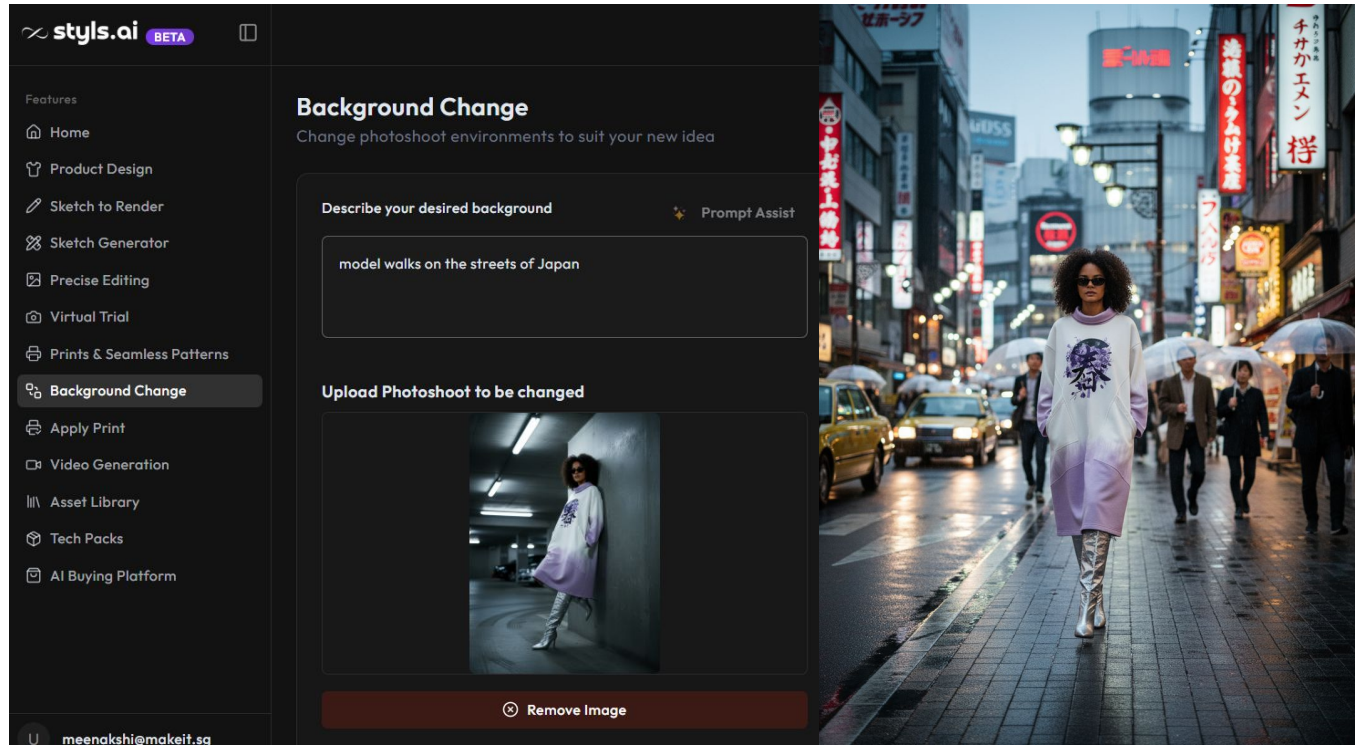


Generation 12

The Editorial Shot

the model wearing the dress, sunglasses and boots while she leans against the wall of a dark grey concrete underground parking lot, street style aesthetic, white tube light lighting

Let the creativity flow...



Generation 13 Lifestyle

*model walks on the streets of
Japan*

Create Stunning Video Content



Generation 14 Insta Video

model walks forward

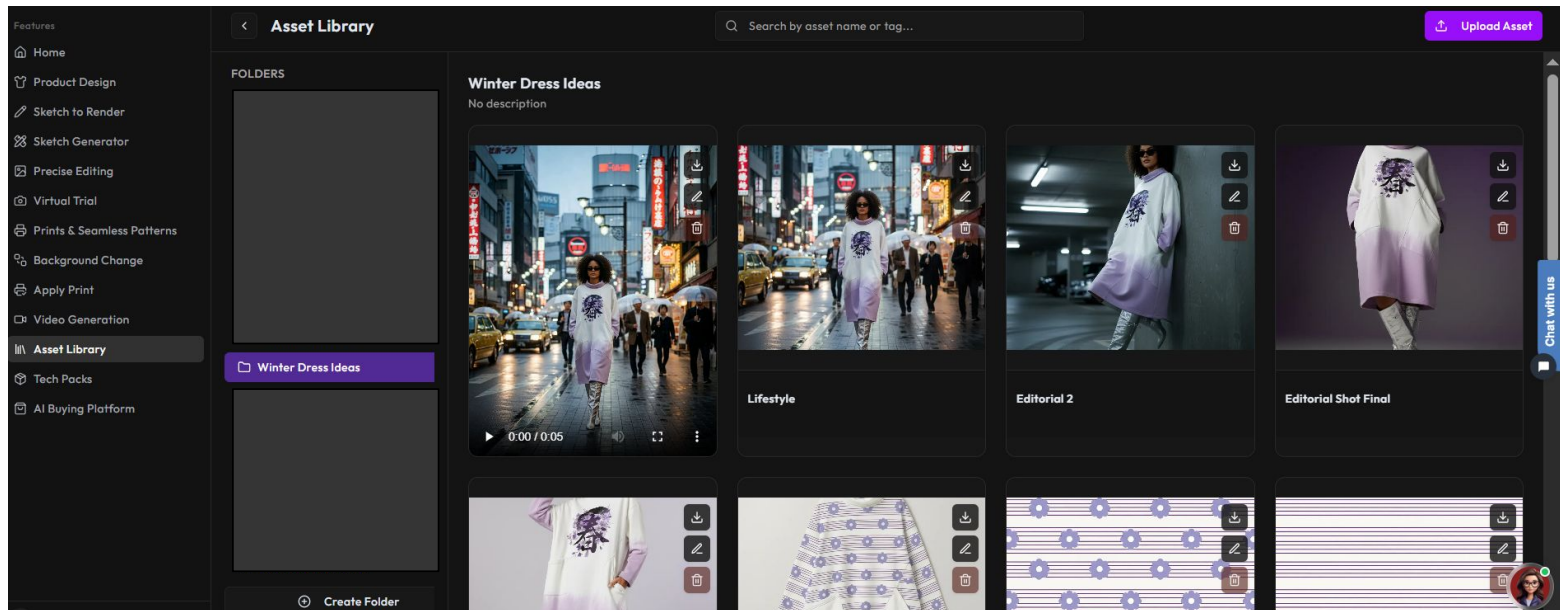
[Click here](#)



Easily change Model's
Nationality, Ethnicity, Age

Asset Library

All Saved and Organized in your Asset Library



★ **Design
Continuity-
between tools**

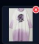


★ **Team
Collaboration**

★ **Quick Access**

★ **Collection/
Category wise
Organization**

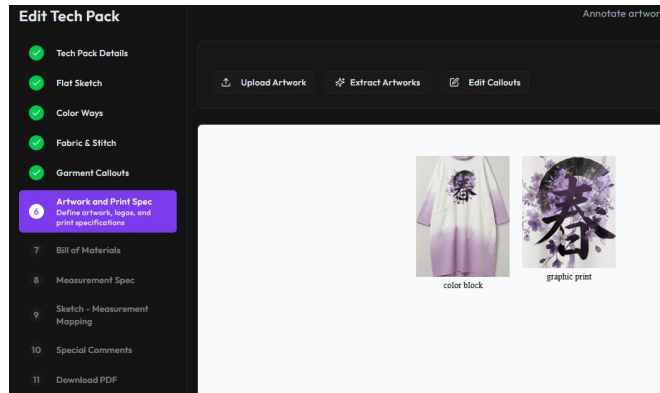
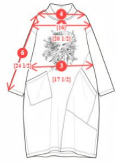
AI Techpack

Techpacks made easy

Bill of Materials			
Components and quantities			
Materials			
Item	Description	Placement	Ref Image
Main Body Fabric	100% cotton jersey knit fabric, approximately 220-240 GSM, with soft hand feel and gradient dip-dye treatment transitioning from white to lavender, suitable for over-sized dress construction	Main body of dress including front, back, and sleeves	
Neckline Rib Fabric	Cotton rib knit fabric, 2x2 rib construction, approximately 250-280 GSM, with enhanced stretch and recovery properties	Mock turtleneck collar	
Trims			
Item	Description	Placement	Ref Image
Screen Print	Plastisol or water-based screen print featuring Japanese calligraphy characters	Center front chest area	

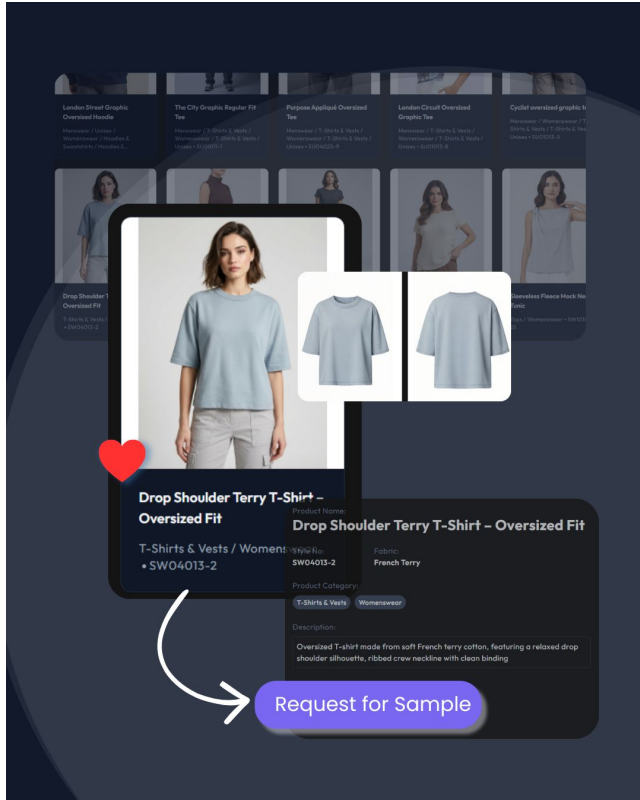


Sample Garment Measurements			
Step 1: Select a measurement from the table below			
Step 2: Click and drag on the sketch to draw measurement lines			
#	Measurement Point	Measurement	Tol
1	Center Back Length From NPT to Hem	42 1/2	
2	Chest Width	20 1/2	
3	Waist Release	17 1/2	
4	Shoulder Width (seam to seam)	16	
5	Across Back	16 1/2	
6	Sleeve Length (from shoulder seam)	24 1/2	
7	Hip Width	21 1/2	
8	Sleeve/Hem Opening	22	



AI Sourcing

Styls Buying Platform



Browse the Styls Collections & request for customization



Manufacturing by vetted ERP/ MES Enabled factories



Design-to-Launch with catalogue images



Test and Scale with Low MOQs and as low as 45 day Lead-time

Bulk Cataloguing

Styls AI Catalogues



- ★ **Brand Aligned and customized for your desired catalogue listing requirements**
- ★ **Full-service model offered by the Styls Team; images delivered post QC**
- ★ **Touch-ups, edits are included**
- ★ **Made to match your listing schedule with 1-2 day turnaround**



Let's do a trial!

Kaushal Bhalotia
Co-founder
kaushal@styls.ai

