



GVLUX

LINESHEET

SPRING SUMMER 2026

COLLECTION

MOQ per Style: 03 units

Production Lead Time: 60-90 days



SKU: D0176 | Dress
Strapless ball gown with crystal-embroidered marbled pattern
Fabric: Denim
(77% USA Cotton, 23% Tencel)
Colors: Blue, Black
Sizes: XXS - 5XL
WSP: \$595 | **SRP:** \$1665



SKU: D0172 | Dress
Column gown with a keyhole neck & crystal embroidery
Fabric: Denim
(64% Cotton, 33% PES, 3% Golden)
Colors: Blue, Black
Sizes: XXS - 5XL
WSP: \$455 | **SRP:** \$1274



SKU: D0151 | Dress
One-shoulder gown with a draped cape sleeve
Fabric: Denim (100% Tencel)
Colors: Blue, Light Blue, Black
Sizes: XXS - 5XL
WSP: \$265 | **SRP:** \$742



SKU: D0173 | Dress
Long-sleeved mermaid gown with an artisanal marbled pattern
Fabric: Denim
(30% Cotton, 70% Tencel)
Colors: Blue, Dark Blue, Black
Sizes: XXS - 5XL
WSP: \$265 | **SRP:** \$742



SKU: D0175 | Dress
Tuxedo dress with a laser-etched, hand-painted pattern
Fabric: Denim
(68% USA Cotton, 30% PES, 2% EL)
Colors: Blue, Black
Sizes: XXS - 5XL
WSP: \$265 | **SRP:** \$742



SKU: JV0008 | Dress
Marbled denim dress with floral lace and rivet detailing
Fabric: Denim (100% Tencel)
Colors: Blue, Light Blue, Black
Sizes: XXS - 5XL
WSP: \$155 | **SRP:** \$434

GVLUX - LINESHEET



SKU: D0174 | Dress
Acid-wash dress with an asymmetrical pleated drape
Fabric: Denim (100% Tencel)
Colors: Light Blue, Blue, Black
Sizes: XXS - 5XL
WSP: \$265 | **SRP:** \$742



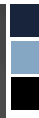
SKU: JV0003.1 | Dress
Asymmetrical column dress with a single draped cape sleeve
Fabric: Denim (66% USA Cotton, 34% Tencel)
Colors: Blue, Black, Light Grey
Sizes: XXS - 5XL
WSP: \$375 | **SRP:** \$1050



SKU: D0181 | Dress
Relaxed-fit kaftan dress with a notched crew neckline
Fabric: Silk Denim
Colors: Blue, Light Blue, Dark Blue, Black
Sizes: XXS - 5XL
WSP: \$245 | **SRP:** \$686



SKU: D0182 | Dress
Elegant V-neck kaftan gown with dolman sleeves
Fabric: Silk Denim
Colors: Blue, Light Blue, Dark Blue, Black
Sizes: XXS - 5XL
WSP: \$295 | **SRP:** \$826



SKU: D0188 | Dress
A-line dress with a gracefully draped, pleated shoulder
Fabric: Silk Denim
Colors: Dark Blue, Light Blue, Black
Sizes: XXS - 5XL
WSP: \$195 | **SRP:** \$546



SKU: D0171 | Dress
V-neck mermaid gown with crystal-embellished tulle details
Fabric: Denim (64% Cotton, 33% PES, 3% Silver Wire)
Colors: Dark Blue, Blue, Black
Sizes: XXS - 5XL
WSP: \$395 | **SRP:** \$1106



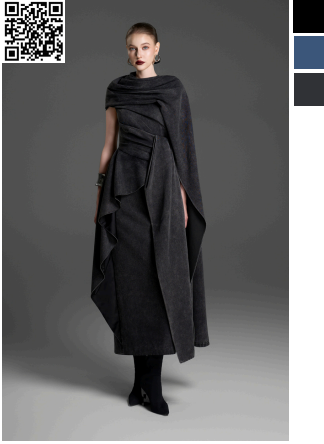
SKU: D0197 | Dress
Asymmetrical A-line gown with a single floor-length sleeve
Fabric: Silk Denim
Colors: Dark Blue, Blue, Black
Sizes: XXS - 5XL
WSP: \$295 | **SRP:** \$826



SKU: D188.1 | Dress
Asymmetrical long A-line dress with a draped shoulder detail
Fabric: Denim (82% USA Cotton, 17% PES, 1% EL)
Colors: Dark Blue, Light Blue, Black
Sizes: XXS - 5XL
WSP: \$285 | **SRP:** \$798



SKU: D0184 | Dress
A-line gown with dramatic, floor-length flared sleeves
Fabric: Silk Denim
Colors: Dark Blue, Blue, Black
Sizes: XXS - 5XL
WSP: \$355 | **SRP:** \$994



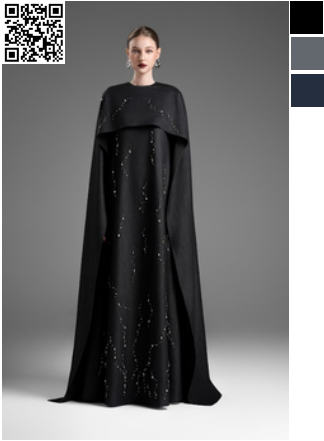
SKU: D0095 | Dress
 One-shoulder acid-wash draped dress with a matching cape
Fabric: Denim
 (30% Cotton, 70% Tencel)
Colors: Black, Blue, Grey
Sizes: XXS - 5XL
WSP: \$265 | **SRP:** \$742



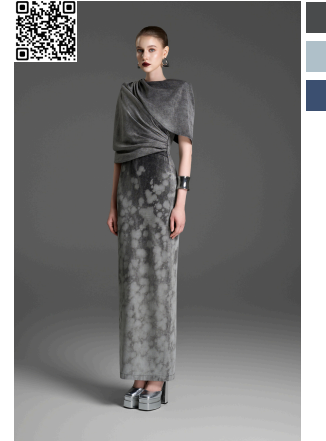
SKU: D0147 | Dress
 One-sleeve column dress with a ruched waist cutout
Fabric: Denim (100% Tencel)
Colors: Grey, Black, Blue
Sizes: XXS - 5XL
WSP: \$265 | **SRP:** \$742



SKU: D0185 | Dress
 Asymmetrical sheath dress with crystal spray embellishment
Fabric: Silk Denim
Colors: Black, Grey, Dark Blue
Sizes: XXS - 5XL
WSP: \$265 | **SRP:** \$742



SKU: D0180 | Dress
 Long dolman-sleeve gown with exquisite crystal detailing
Fabric: Silk Denim
Colors: Black, Grey, Dark Blue
Sizes: XXS - 5XL
WSP: \$355 | **SRP:** \$994



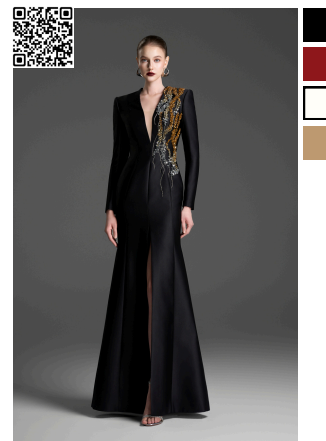
SKU: D0178 | Dress
 Sheath dress with an integrated capelet and asymmetrical pleating
Fabric: Denim
 (30% Cotton, 70% Tencel)
Colors: Grey, Light Blue, Blue
Sizes: XXS - 5XL
WSP: \$195 | **SRP:** \$546



SKU: JV0003.2 | Dress
 Asymmetrical column dress with a single draped cape sleeve
Fabric: Denim (70% USA Cotton, 20% PES, 8% Rayon, 2% EL)
Colors: Light Grey, Blue, Black
Sizes: XXS - 5XL
WSP: \$285 | **SRP:** \$798



SKU: D0067 | Dress
 A-line dress set and crystal-embellished cloak
Fabric: Velvet Satin
Colors: Black, Red, Cream White
Sizes: XXS - 5XL
WSP: \$555 | **SRP:** \$1554



SKU: D0133 | Dress
 V-neck mermaid gown with crystal-embellished tulle details
Fabric: Taffeta
Colors: Black, Red, Cream White, Beige Brown
Sizes: XXS - 5XL
WSP: \$495 | **SRP:** \$1386



SKU: D0110 | Dress
 Sheath dress with a wave neckline and tulle waist panels
Fabric: Sand Tweed
Colors: Black, Reddish Brown, Grey, Beige Brown
Sizes: XXS - 5XL
WSP: \$425 | **SRP:** \$1190

GVLUX - LINESHEET



SKU: SA0111 | Blazer
Asymmetrical blazer with a draped scarf and crystal embellishments
Fabric: Crepe
Colors: Black, Red, Cream White, Cobalt Blue
Sizes: XXS - 5XL
WSP: \$405 | **SRP:** \$1134



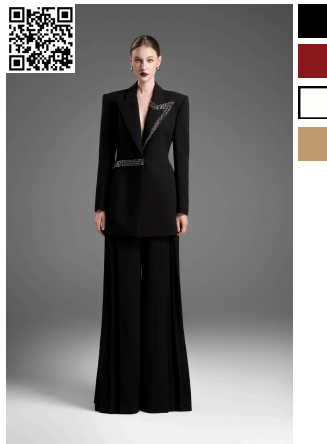
SKU: SV0111 | Skirt
Lightweight, flowing A-line skirt
Fabric: Chiffon
Colors: Black, Red, Cream White, Cobalt Blue
Sizes: XXS - 5XL
WSP: \$75 | **SRP:** \$210



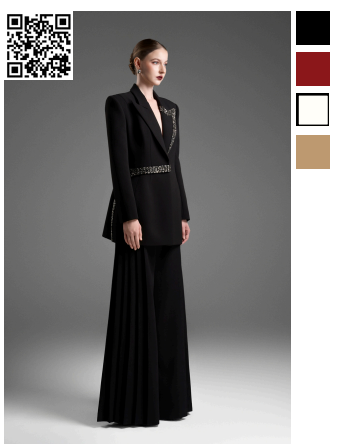
SKU: D0109 | Dress
Tailored sheath dress with a deep V-neck and taffeta lapels
Fabric: Crepe
Colors: Black, Red, Cream White, Cobalt Blue
Sizes: XXS - 5XL
WSP: \$455 | **SRP:** \$1274



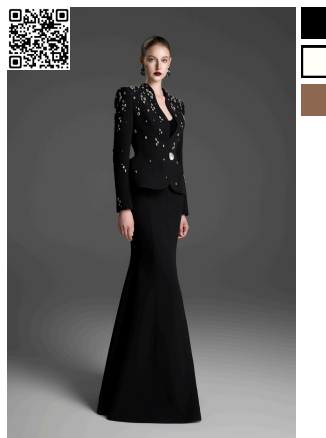
SKU: D0084 | Dress
Strapless A-line gown with crystal embellishments
Fabric: Taffeta
Colors: Black, Red, Cream White
Sizes: XXS - 5XL
WSP: \$495 | **SRP:** \$1386



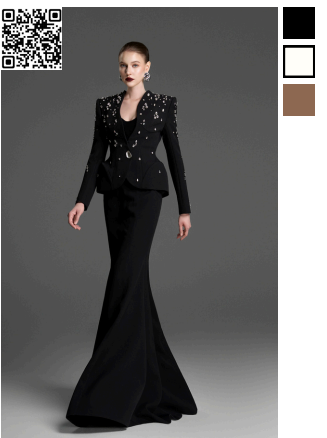
SKU: SA0123 | Blazer
Tailored blazer with an integrated asymmetrical side-tie belt
Fabric: Crepe
Colors: Black, Red, Cream White, Beige Brown
Sizes: XXS - 5XL
WSP: \$255 | **SRP:** \$714



SKU: SV0123 | Trousers
Wide-leg trousers with multi-pleat detailing on the sides
Fabric: Crepe
Colors: Black, Red, Cream White, Beige Brown
Sizes: XXS - 5XL
WSP: \$125 | **SRP:** \$350



SKU: SA0177 | Blazer
Collarless paneled top with a curved, flared waist
Fabric: Crepe
Colors: Black, Cream White, Latte Brown
Sizes: XXS - 5XL
WSP: \$325 | **SRP:** \$910

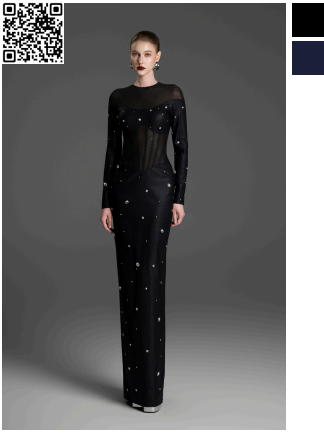


SKU: SV0177 | Skirt
Paneled construction mermaid skirt
Fabric: Crepe
Colors: Black, Cream White, Latte Brown
Sizes: XXS - 5XL
WSP: \$95 | **SRP:** \$266



SKU: D0127 | Dress
Sheath dress with a boat neckline and crystal fringe detailing
Fabric: Stretch Rayon Blend
Colors: Black, Cream White
Sizes: XXS - 5XL
WSP: \$375 | **SRP:** \$1050

GVLUX - LINESHEET



SKU: JV0030 | Dress
 Long-sleeve column gown with corset seams
Fabric: Shimmering Rayon Blend
Colors: Black, Midnight Purple
Sizes: XXS - 5XL
WSP: \$255 | **SRP:** \$714



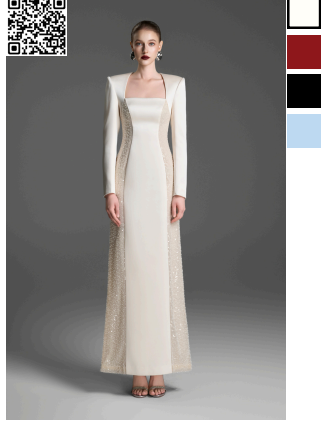
SKU: D0074 | Dress
 Asymmetrical evening gown with a twisted shoulder and pleated waist
Fabric: Sand Silk
Colors: Black, Beige Brown, Red
Sizes: XXS - 5XL
WSP: \$195 | **SRP:** \$546



SKU: D0079 | Dress
 A-line bustier gown with faux-corset seams and a matching cape
Fabric: Silk Denim
Colors: Black, Blue, Light Blue
Sizes: XXS - 5XL
WSP: \$225 | **SRP:** \$630



SKU: D0078 | Dress
 Long-sleeve boat neck dress with a teardrop waist cutout
Fabric: Taffeta
Colors: Cream White, Red, Black, Light Blue
Sizes: XXS - 5XL
WSP: \$485 | **SRP:** \$1359



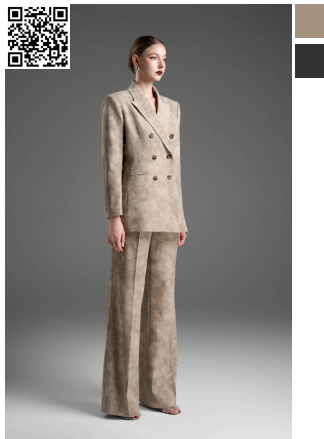
SKU: D0131 | Dress
 Sheath dress with crystal-embellished lace side panels
Fabric: Taffeta
Colors: Cream White, Red, Black, Blue
Sizes: XXS - 5XL
WSP: \$235 | **SRP:** \$658



SKU: D0169 | Dress
 A-line gown with a ruched skirt and crystal wave embellishment
Fabric: Tweed
Colors: Marble Beige, Marble Grey
Sizes: XXS - 5XL
WSP: \$245 | **SRP:** \$686



SKU: SA0114 | Blazer
 Classic double-breasted blazer with welt pockets
Fabric: Tweed
Colors: Beige Marble, Grey Marble
Sizes: XXS - 5XL
WSP: \$165 | **SRP:** \$462



SKU: SQ0114 | Trousers
 Modern, straight-leg tailored trousers
Fabric: Tweed
Colors: Beige Marble, Grey Marble
Sizes: XXS - 5XL
WSP: \$95 | **SRP:** \$266



SKU: SA0134 | Blazer
 Blazer with a detachable collar and a grey-black wash
Fabric: Tweed
Colors: Grey Marble, Beige Marble
Sizes: XXS - 5XL
WSP: \$195 | **SRP:** \$546

GVLUX - LINESHEET



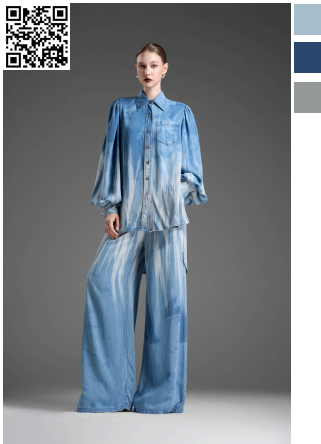
SKU: SQ0134 | Trousers
 Modern, straight-leg trousers in a matching grey-black wash
Fabric: Tweed
Colors: Grey Marble, Beige Marble
Sizes: XXS - 5XL
WSP: \$95 | **SRP:** \$266



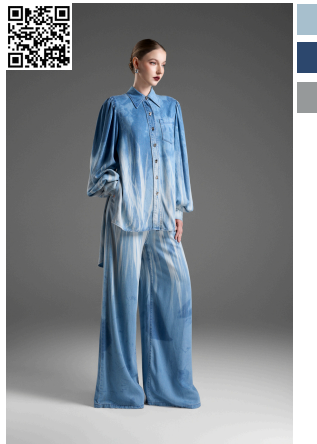
SKU: SA0135 | Blazer
 Collarless pinstripe blazer with a chest cutout and corset detailing
Fabric: Tweed
Colors: Black, Cream White
Sizes: XXS - 5XL
WSP: \$195 | **SRP:** \$546



SKU: SQ0135 | Trousers
 Classic, straight-leg trousers in a matching pinstripe fabric
Fabric: Tweed
Colors: Black, Cream White
Sizes: XXS - 5XL
WSP: \$95 | **SRP:** \$266



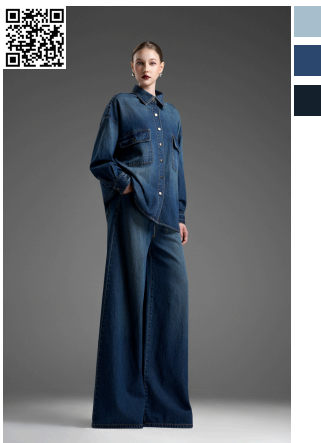
SKU: SA0191 | Shirt
 Puff-sleeve denim shirt with a unique stone-wash effect
Fabric: Silk Denim
Colors: Light Blue, Blue, Grey
Sizes: XXS - 5XL
WSP: \$125 | **SRP:** \$350



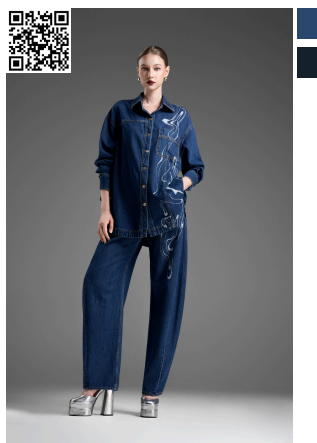
SKU: SQ0191 | Trousers
 Wide-leg trousers with a matching stone-wash
Fabric: Silk Denim
Colors: Light Blue, Blue, Grey
Sizes: XXS - 5XL
WSP: \$125 | **SRP:** \$350



SKU: SA0209 | Shirt
 Oversized denim shirt with a faded moss green effect
Fabric: Denim
 (77% USA Cotton, 23% Tencel)
Colors: Light Blue, Blue, Dark Blue
Sizes: XXS - 5XL
WSP: \$125 | **SRP:** \$350



SKU: SQ0209 | Trousers
 Wide-leg denim with a faded moss green effect
Fabric: Denim
 (77% USA Cotton, 23% Tencel)
Colors: Light Blue, Blue, Dark Blue
Sizes: XXS - 5XL
WSP: \$125 | **SRP:** \$350



SKU: SA0194 | Shirt
 Classic denim shirt with a unique, laser-etched pattern
Fabric: Denim
 (77% USA Cotton, 23% Tencel)
Colors: Blue, Dark Blue
Sizes: XXS - 5XL
WSP: \$125 | **SRP:** \$350



SKU: SQ0194 | Trousers
 Horseshoe-fit jeans with a laser-etched & color-extracted pattern
Fabric: Denim
 (77% USA Cotton, 23% Tencel)
Colors: Blue, Dark Blue
Sizes: XXS - 5XL
WSP: \$125 | **SRP:** \$350



SKU: D0143 | Dress
Asymmetrical high-neck dress
with draping and a chest cutout
Fabric: Denim (100% Tencel)
Colors: Grey, Black, Blue
Sizes: XXS - 5XL
WSP: \$245 | **SRP:** \$686