



SUNSHIEN WPC

Julia-SUNSHIEN WPC

WhatsApp 商业帐号



BINZHOU SUNSHIEN WPC Co.Ltd.

Address: Xixiaowang Town Industrial Park, Wudi County, Binzhou City, Shandong Province, China

Website: <http://www.sunshienwpc.cn/>



Contact: Julia Email : Julia@sunshienwpc.com What's up : +86 18562595530

About Us

BINZHOU SUNSHIEN WPC Co.Ltd.,is a professional wood plastic composites factory established in 2012.Our factory covers an area of more than 100,000 square meters with 200+ employees.SUNSHIEN has been in the composite material field for over a decade.We are in a long-term cooperative relationship with many universities and research institutions in China.

SUNSHIEN WPC mainly produce outdoor WPC decking,fencing,wall cladding and other outdoor use WPC products.We have developed hundreds of WPC molds to meet customers' needs.We look forward to establishing cooperative relationship with distributors worldwide and developing local market to provide people with a green outdoor life.

60+

There are 60+production lines in our factory to ensure the delivery time of the goods as scheduled.

100,000+

Our factory covers an area of more than 100,000 square meters

200+

We have 200+employees including technicians,sales and workers.

Patents

We have our own research and development team and have 20+patents in the WPC technology field.

Environmentally Friendly

WPC is crafted from recycled materials,making it an environmentally conscious choice.By utilizing recycled wood fibers and plastic,WPC contributes to the reduction of waste and promotes sustainable practices in decking solutions.

Durability

WPC decking is highly durable and can withstand harsh weather conditions,heavy foot traffic,and exposure to sunlight and moisture without warping,cracking or rotting.

Aesthetic Excellence

Composite decking offers a spectrum of colors and textures,allowing you to create a backyard haven that perfectly aligns with your design vision.Its stunning appearance remains intact for decades,enhancing your outdoor aesthetic.

Maintenance-free

WPC decking requires very little maintenance compared to traditional wood decking.It does not need to be painted,stained,or treated and can be easily cleaned with soap and water.

Design support

We can help you to design label and sample box base on your needs.

Why Choose Us

Factory Workshop



Complete independent experimental equipment

- Injection molding machine;
- Plastic refining machine;
- Flat vulcanizing machine;
- Constant temperature and humidity testing machine;
- Boiling test; pressure test, strength test, etc.

TESTING ROOM



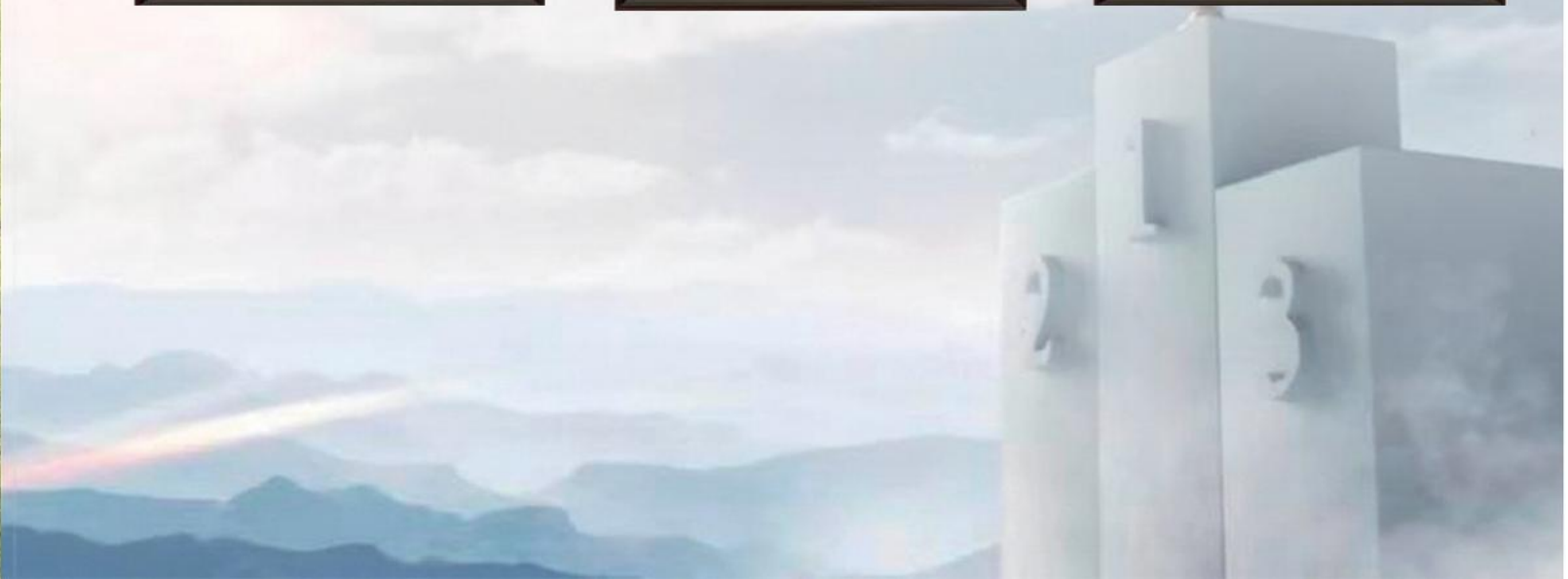


DECKING

FENCING

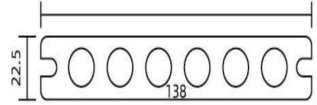
WALL CLADDING

Certification

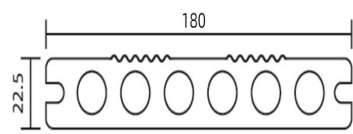


CO-EXTRUSION WPC DECKING

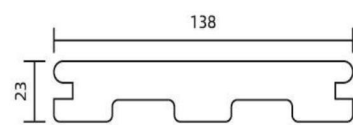
Natural appearance, widely used in balconies, terraces, pool areas, pavilions, gardens, and walkways.



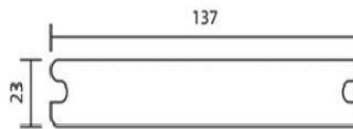
Coextrusion Hollow Deck
Dimension: 138*23mm



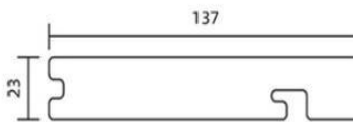
Coextrusion Hollow Deck
Dimension: 180*22mm



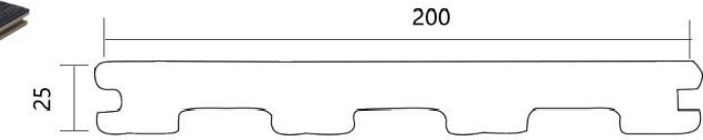
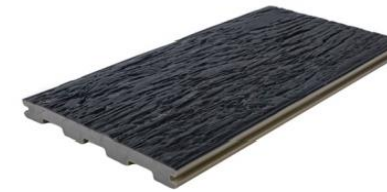
Coextrusion M Deck
Dimension: 138*23mm



Coextrusion Solid Deck
Dimension: 137*23mm



Coextrusion Edge Board
Dimension: 137*23mm



WPC Resilient DECKING
Dimension : 200x23mm

Deck Accessories:



Joist



Fascia Board



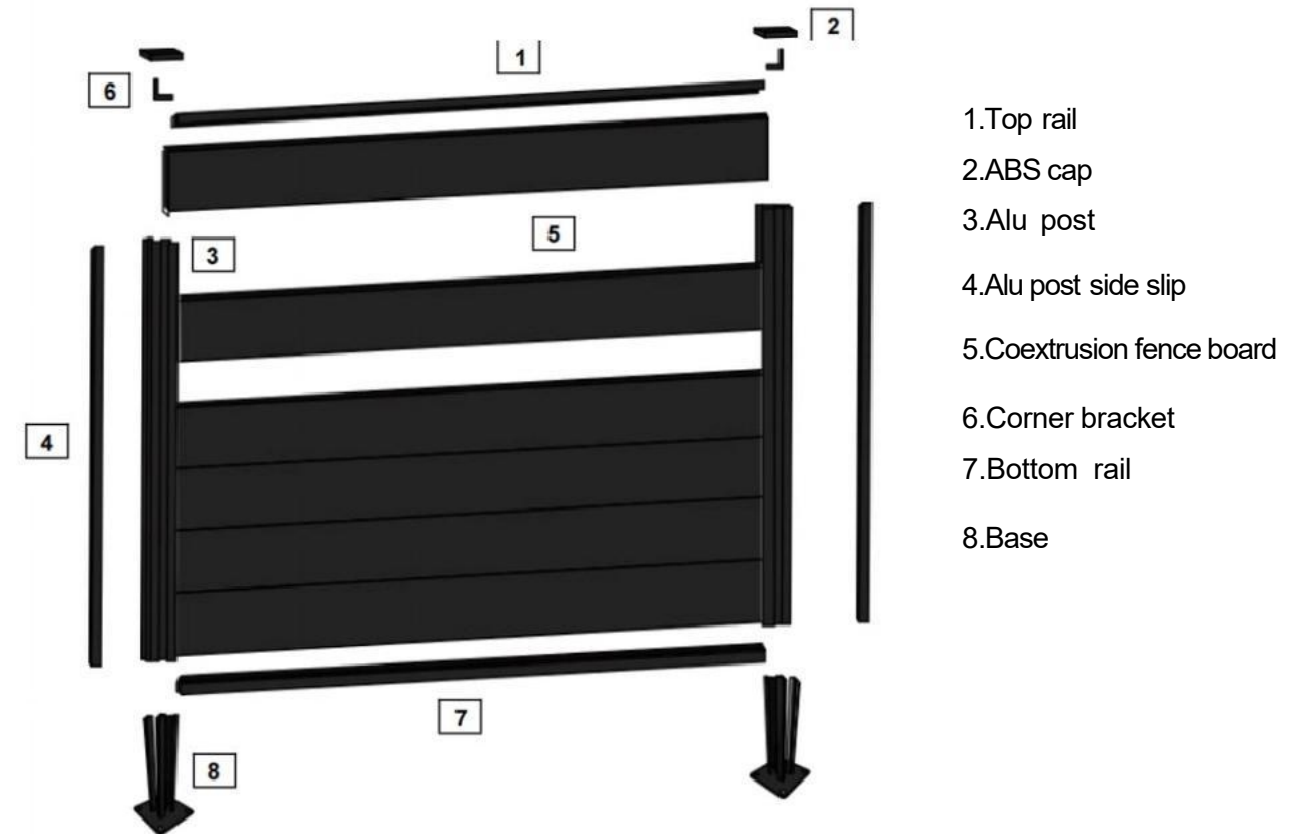
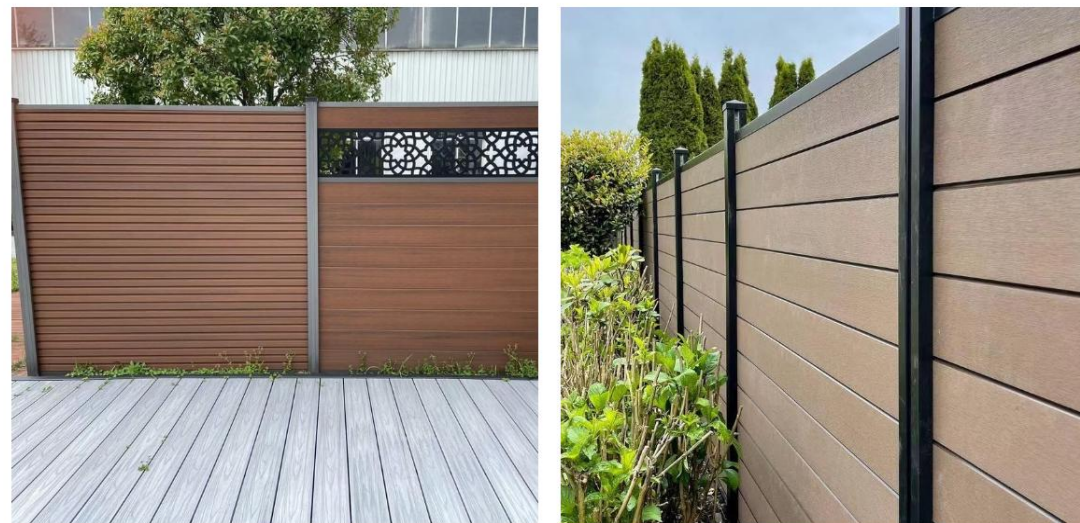
SS clip



Start&end Clip

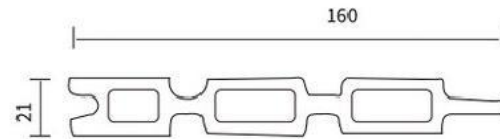


Accessories

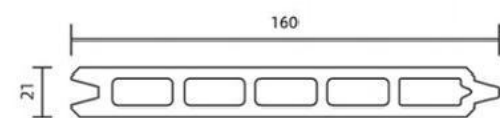


CO-EXTRUSION WPC FENCING

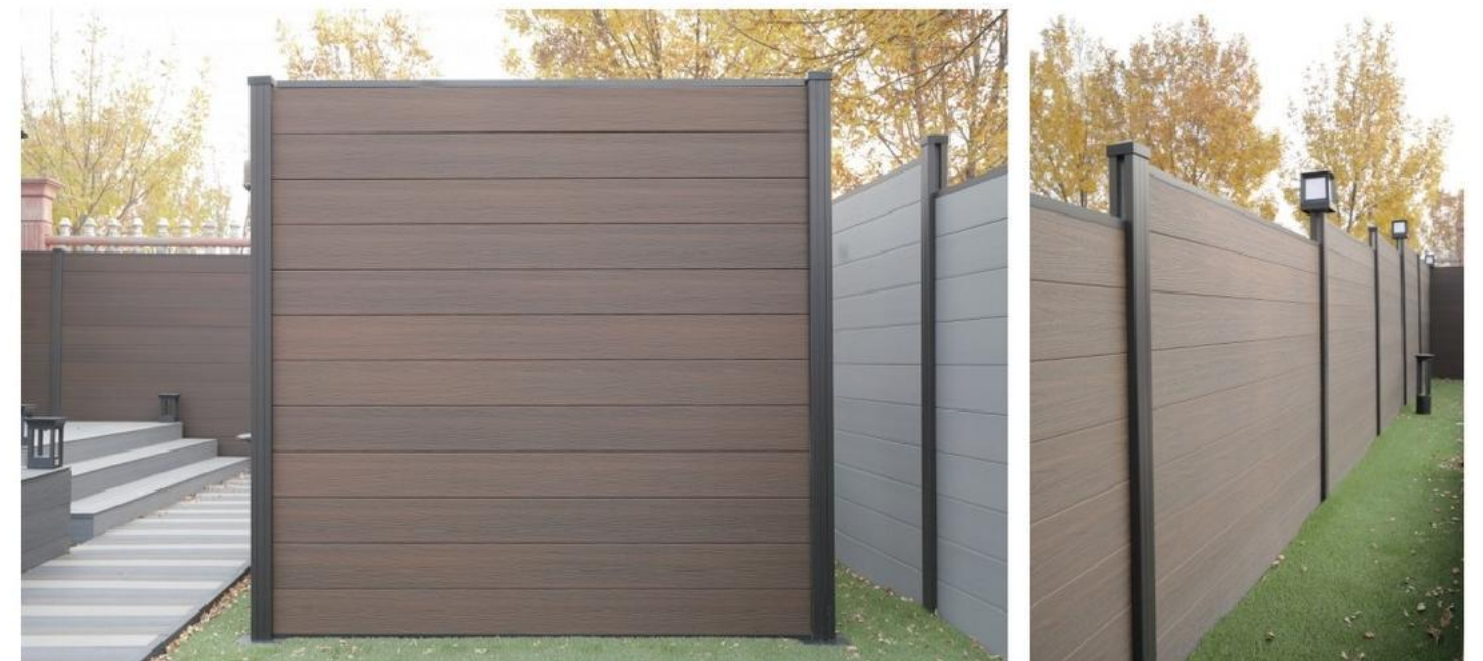
Composite fencing panels are easy to install.They can be easily attached to existing timber fence posts,or aluminium post for the complete look.

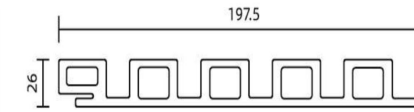
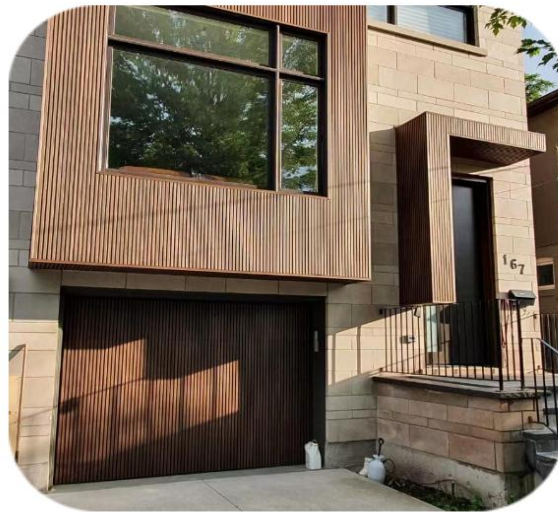


Coextrusion Fence Board
Dimension:160*21mm

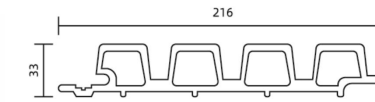


Coextrusion Fence Board
Dimension:160*21mm

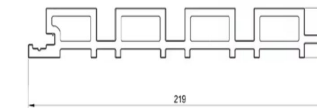




Coextrusion Wall Cladding Board
Dimension:198*26mm



Coextrusion Wall Cladding Board
Dimension:216*33mm



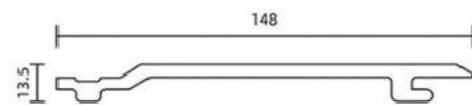
Coextrusion Mixed Color Wall Cladding
Dimension:219*26mm



CO-EXTRUSION WPC WALL CLADDING

Composite wall cladding is highly resistant to weather conditions, water, and pests, making it an ideal choice for exterior applications.

Skirting Board:



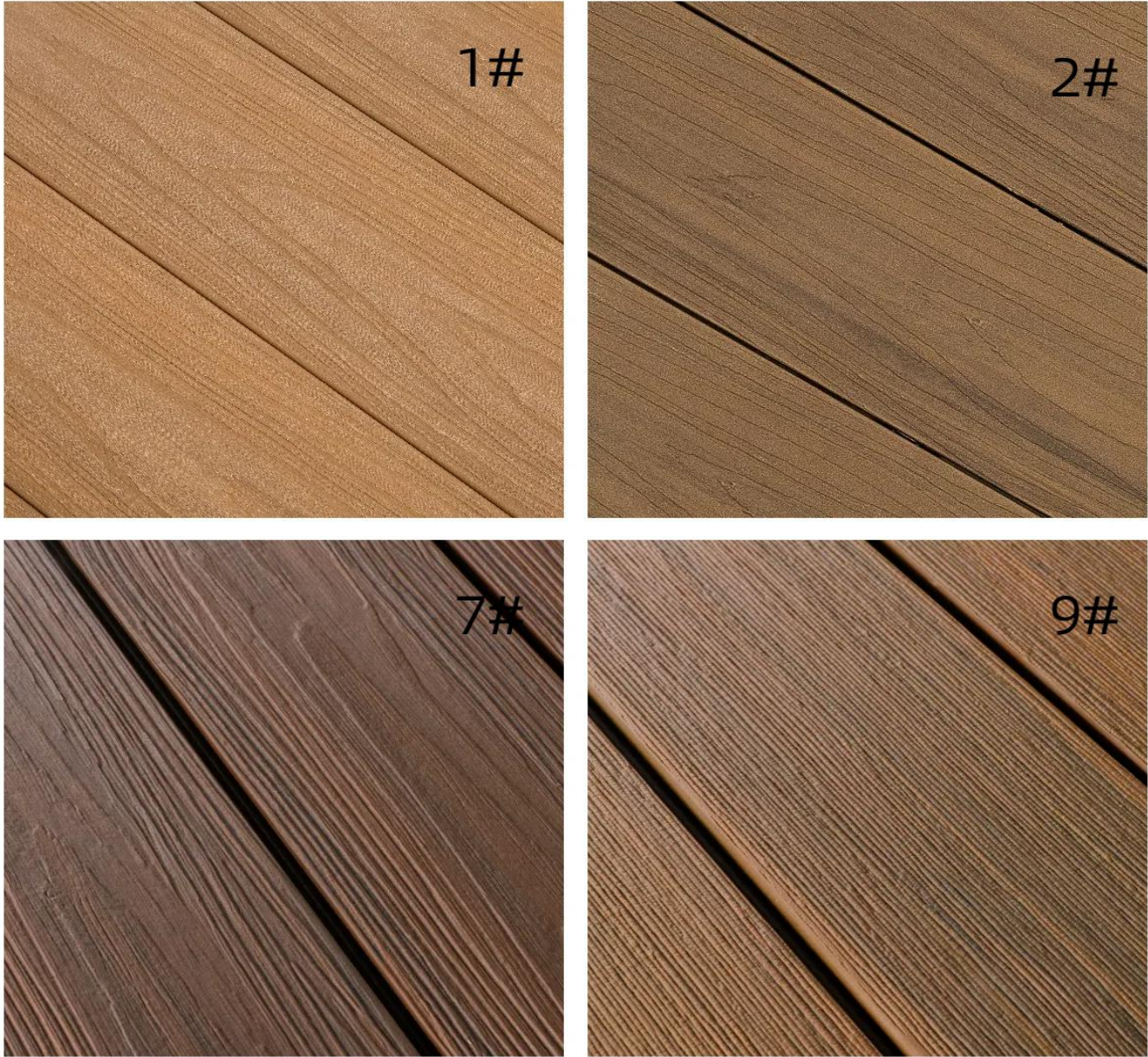
Coextrusion Wall Cladding Board
Dimension:148*21mm



COLOR OPTION



FINISH TEXTURE



- #1 More realistic and natural wood grain texture
- #2 Anti-slip and burr-free lychee texture for a more comfortable barefoot experience
- #7 Deep embossed wood grain for a layered experience
- #9 Old wood vertical stripe design for a sense of space and anti-slip

