



Sahil

— Since 1986 —

World Leaders In Exporting Polypropylene Rugs

www.sahilplastics.com

Sahil

— Since 1986 —



One Stop Destination for Best Quality PP Rugs.

Sahil Plastic Pvt Ltd is the leader in exporting polypropylene rugs. We are dedicated to client satisfaction and make timely deliveries of your products. We make our products available at an exquisite range of affordable prices. Key features of Sahil PP rugs are innovation, diversified variety, stylish patterns, attractive designs, vibrant colours and an endless range. Our mission is to supply the highest quality polypropylene rugs at the most competitive prices.

We produce premium, colourful, multipurpose, high utility rugs for the local and the global markets. These rugs are made from high-quality polypropylene granules. Today, Sahil PP rugs are being exported to countries like the United States Of America, the United Kingdom, Europe, South Africa, UAE & Saudi Arabia etc. Our distributor network is well integrated and spans across India. We have a strong market in Maharashtra, Karnataka, Tamil Nadu, Kerala, Rajasthan, Chhattisgarh, Orissa, West Bengal, Delhi, Andhra Pradesh, Madhya Pradesh etc. Sahil, today, is a household name in Rugs.

Our plastic rugs are reversible, lightweight, portable, colourful, durable, and long-lasting. To avoid fading we use high-quality masterbatches & pigments in our products, these masterbatches pigments are known for their excellent resistance to fading when exposed to light. They also tend to be more resistant to fading when exposed to open air and heat. We also use high-quality performance ultraviolet stabilizers, these stabilizers work by absorbing or screening out UV radiation and preventing damage that could happen to the rugs.

Since its establishment, the company has been serving to meet the needs and requirements of customers all over the world. Over 200 plus clients around the world have bestowed their trust on Sahil Plastic Pvt Ltd and with a presence in over 30 countries globally, the Growth is Visible. With all necessary social compliance, child labour free working environment, there are many things that have made us acceptable worldwide amongst the buying fraternity.



GLOBAL REACH

- 1** | The company has expanded its horizon supplying to over 30 countries
- 2** | We strive to utilize our expertise to service potential new markets.
- 3** | Each product line is customized to suit the desired geographical trends.

37+ Years Of Experience **5000+** Mat design Created **30+** Countries Covered **200+** Trusted Clients

Sahil PP mats are being exported to countries such as USA, UK, Canada, Europe, South Africa, UAE, & Saudi Arabia. The key driving force in the growing international exports by the year is our unwavering commitment to the best product quality. All products that we manufacture are created keeping stringent quality standards in mind.

Our buyers and many others as well.



MANUFACTURING FLOW CHART



R.M. Storage



Mixing



Extrusion



Beam Warping



Weaving of Mats



Cutting & Sealing



Hemming & Taping



Packing



Dispatch

WHY US

We employ flexible & reusable HDPE bags to package final products. & recyclable PDQ box

**Certification:
BSCI, OEKO TEX, SEDEX,
SCAN, GRS, ISO**

**Focused on
Sustainability**

**Inhouse Team - For
Research & Designing
as per markets trends**

**100% expansion
in next few
months**

**Never compromise on
Quality & the finest job
working each rug (we
give what we say)**

**Fastest
Lead time.**

**We have the capacity to produce
2,60,000 to 3,20,000 square meters per month.**

C O M P A N Y T I M E L I N E



1986-1989

First manufacturing unit set up in Umbergaon, Gujarat



1990-1999

Daman manufacturing unit triples the production capacity



2000-2009

A greater focus on global expansion



2010-2019

largest manufacturing plant set up in Aurangabad



2020-

Achieving great heights in this business and year by year

- With the latest Japanese technology Jacquard Looms Sahil Plastic Pvt Ltd set up its first manufacturing unit in Umbergaon Gujarat
- Sahil Plastic Pvt Ltd mats got a great response from the market and a lot of clients were approaching for the products.

- The second Manufacturing unit was set up at Daman with the most advanced Japanese technology Jacquard Looms.
- Sahil Plastic Pvt Ltd worked on its distribution channel expansion and was very successful in this practice

- At this time Sahil Plastic Pvt Ltd was one of the biggest mats manufacturing companies in India.
- In esting period, Sahil Plastic Pvt Ltd not only stood tall but also was able to win national and international clients confidence all because its superior quality

- Sahil Plastic Pvt Ltd's biggest plant was set up at Aurangabad Maharashtra in 2010
- Sahil Plastic Pvt Ltd entered in all big retail and mall chains and was able to do a profitable and successful business
- We became the proud members of SEDEX & SCAN

- Regularly taking part in Domotex world's leading trade fair for floor coverings & Heimtextile the largest international trade fair for textile.
- The Product capacity also increasing day by day and Sahil Plastic Pvt Ltd is planning to set up a new plant beside the current one

Sahil's green & environment-friendly philosophy precedes the current trend in this direction. From the very beginning, we have been an organization that's acutely aware of our responsibilities to nature, and our planet, and have acted in accordance with our responsible corporate ethos. Several measures have been adopted to minimize ecological damage and protect the environment.

Zero Waste

Following a zero waste generation policy, all the waste from manufacturing is recycled and converted to granules. These granules are then used in the manufacturing process itself, to produce new mats. Over 20,000 kg of plastic scrap is recycled each month.

Energy efficiency

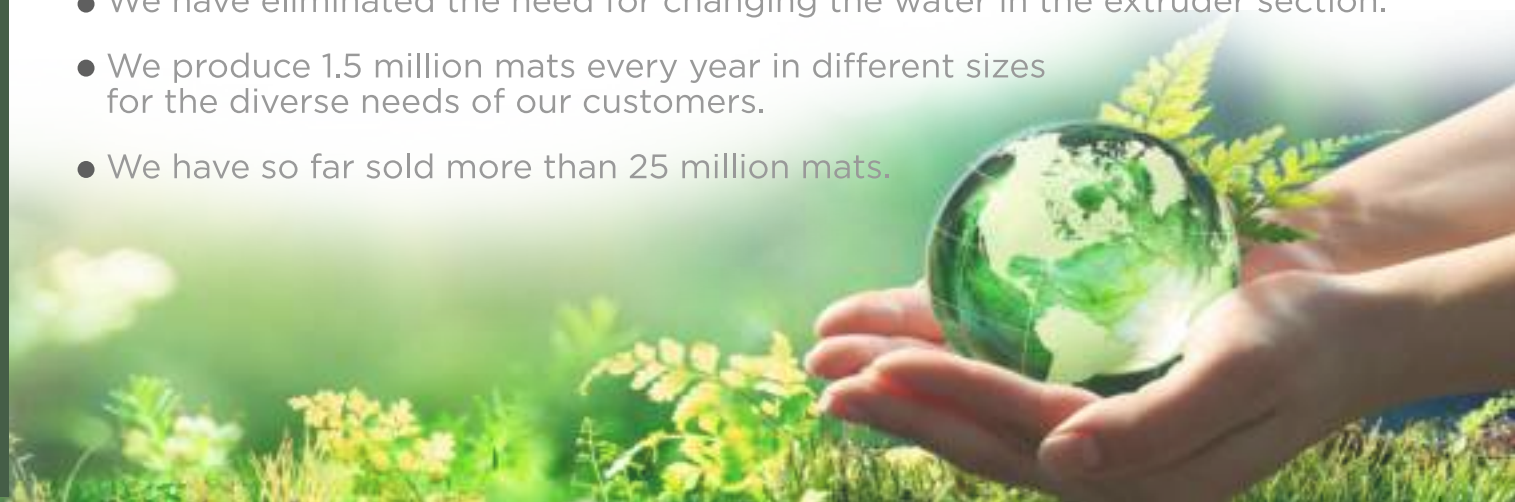
Extrusion Machines that convert granules to liquid need high-intensity energy. By insulating the heating zones of the extruders, we substantially minimize heat dissipation & reduce energy consumption. Over the past year, we have installed lighting solutions that save electricity; enough to power 80 households on an ongoing basis.

Packaging

We employ flexible & reusable HDPE bags to package final products. & recyclable PDQ box

Trivia

- We recycle 20,000 kgs of plastic scrap every month. This saves a landfill space of approximately 1800 cubic yards.
- We have Installed Light-enhancing and heat-reducing ventilators at our plants. These help us save electricity enough to power 100 tube lights for six months in a year.
- We have eliminated the need for changing the water in the extruder section.
- We produce 1.5 million mats every year in different sizes for the diverse needs of our customers.
- We have so far sold more than 25 million mats.





RESEARCH & DEVELOPMENT TEAM

who has years of experience in textile industry which creates the designs according to the ongoing trends & demands of customers.

Every week, we introduce **15 TO 20 NEW DESIGNS** that are both stylish and functional. In addition, we have already **DESIGNED OVER 5000 RUGS** that cater to various preferences and needs.

We are proud of our team's dedication and hard work, and we are confident that our quick response and excellent products will exceed your expectations. Please feel free to browse our design collection library



<https://sites.google.com/sahilplastics.com/sahil-mats-library/design-library>



PRODUCT TESTING

COLOUR FASTNESS TO LIGHT (80AFU)

4.5

4-5

COLOUR FASTNESS TO PERSPIRATION ISO 105

COLOUR FASTNESS TO WASHING ISO 105 (AT 50 DEG. C.)

4-5

(Dry)
4
4-5
(Wet)

COLOUR FASTNESS TO RUBBING ISO 105/X12

BREAKING STRENGTH AFTER UV EXPOSURE (% RETENTION IN STRENGTH)

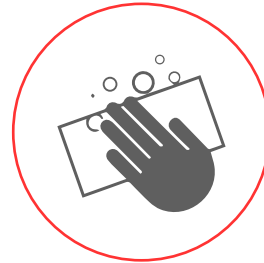
(Lengthwise)
97.9%
96.7%
(Widthwise)

PASS

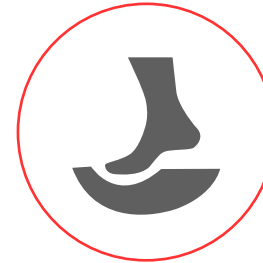
FLAMMABILITY (16CFR 1630)

FEATURES OF PRODUCT

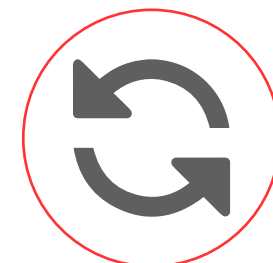
UTILISATION



EASY TO CLEAN



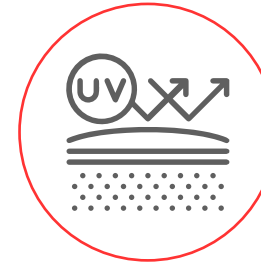
COMFORTABLE



REVERSIBLE



LIGHT WEIGHT



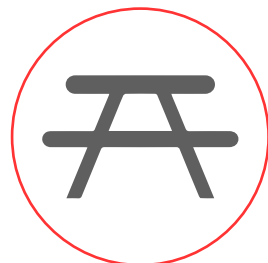
UV RESISTANT



ECO FRIENDLY



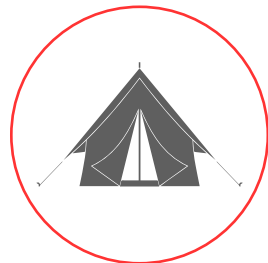
PATIO



PICNIC



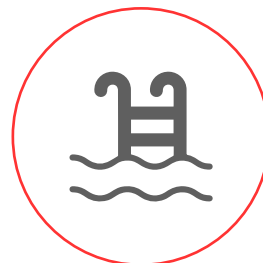
RV



CAMPING



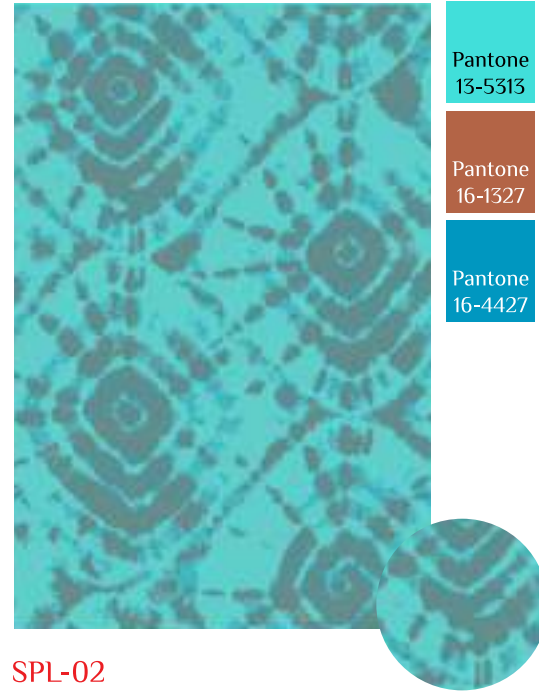
BEACH



POOLSIDE

USAGE

TOP TRENDING COLORS 2024-2025





GRADIENT

All Our Rugs can be recycled, making it extra Eco-Friendly.

S
I
Z
E
S

CM	INCH	FOOT
90 x 150	36 x 60	3 x 5
90 x 180	36 x 72	3 x 6
120 x 180	48 x 72	4 x 6
150 x 210	60 x 84	5 x 7
150 x 240	60 x 96	5 x 8
180 x 270	72 x 108	6 x 9
240 x 300 (FOLDING)	96 x 120	8 x 10
270 x 360 (FOLDING)	108 x 144	9 x 12

Standard width are as follows
90, 120, 150, 180, 240, 270



Reversible



Recyclable



LightWeight



Stylish



Durable



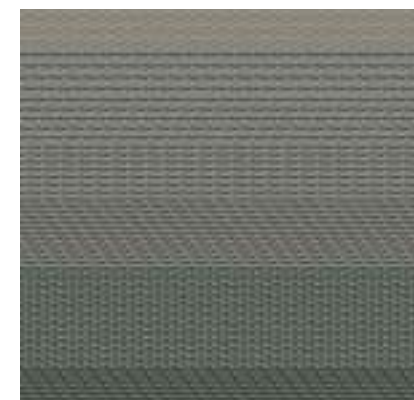
Indoor / Outdoor
Rugs



UV
Resistance



Washable





ORIGINAL



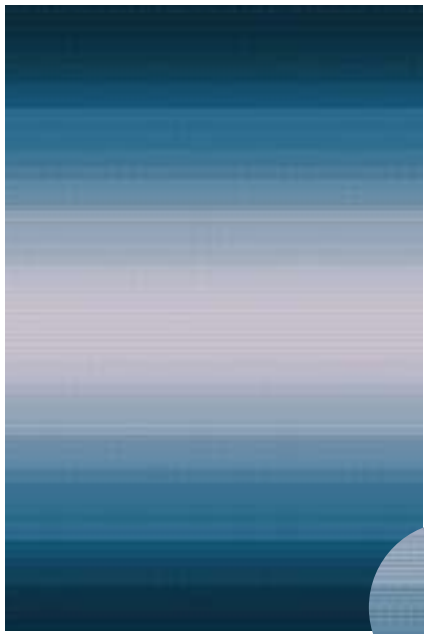
FOREST



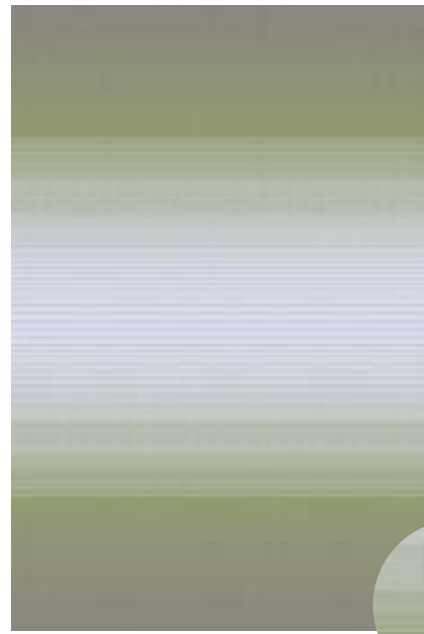
SUNSET



OCEAN



NEUTRAL



LEAF

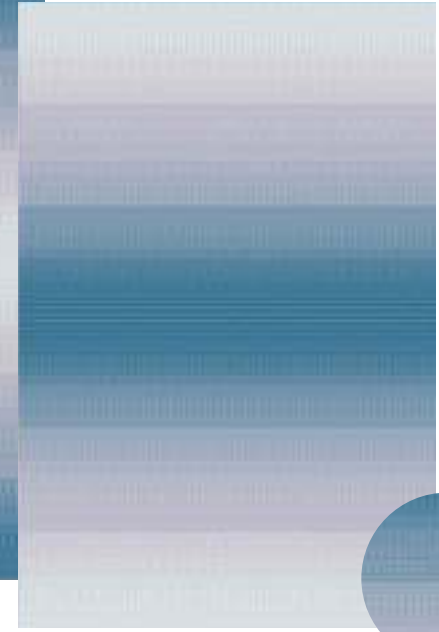


FRONT



NEUTRAL

BACK





GEOMETRIC

We have an Exquisite design option tailored as per clients' requirements. We can provide any designs suggested by the clients

	CM	INCH	FOOT
S I Z E S	90 x 150	36 x 60	3 x 5
	90 x 180	36 x 72	3 x 6
	120 x 180	48 x 72	4 x 6
	150 x 210	60 x 84	5 x 7
	150 x 240	60 x 96	5 x 8
	180 x 270	72 x 108	6 x 9
	240 x 300 (FOLDING)	96 x 120	8 x 10
	270 x 360 (FOLDING)	108 x 144	9 x 12

Standard width are as follows
90, 120, 150, 180, 240, 270



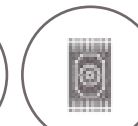
Reversible



Recyclable



LightWeight



Stylish



Durable



Indoor / Outdoor
Rugs

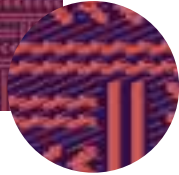


UV
Resistance



Washable

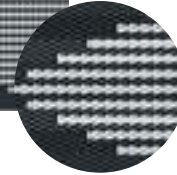
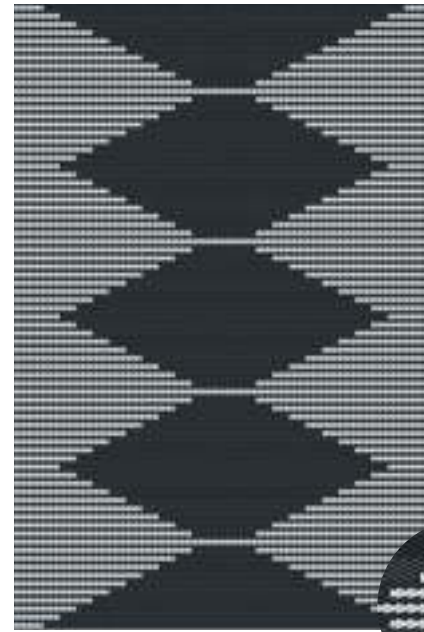




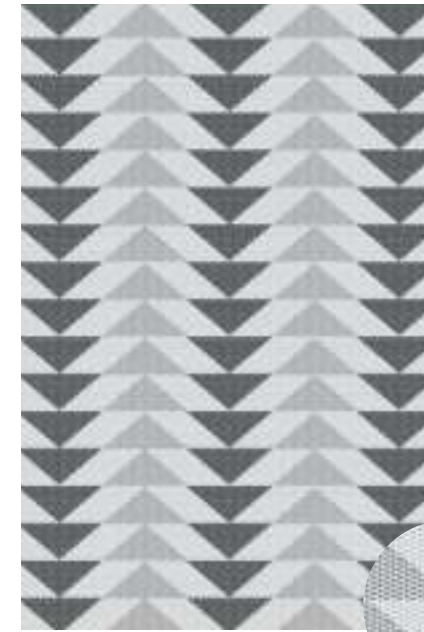
GEO-1001



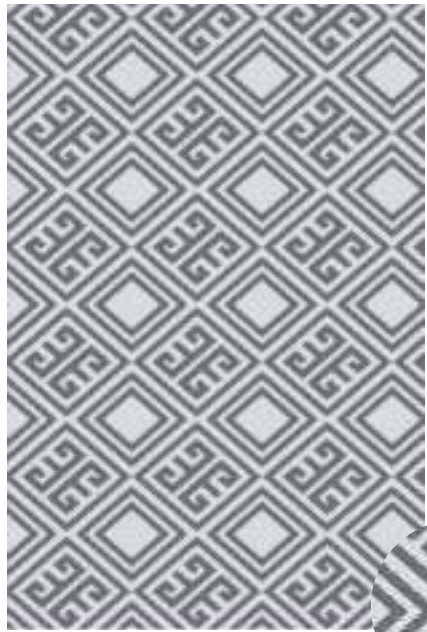
GEO-1002



GEO-1003



GEO-1004



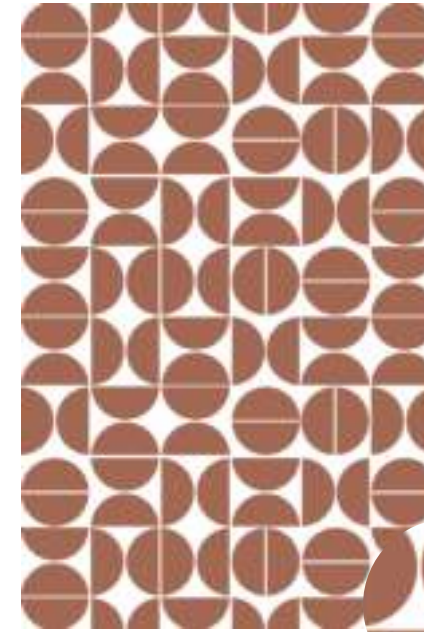
GEO-1005



GEO-1006



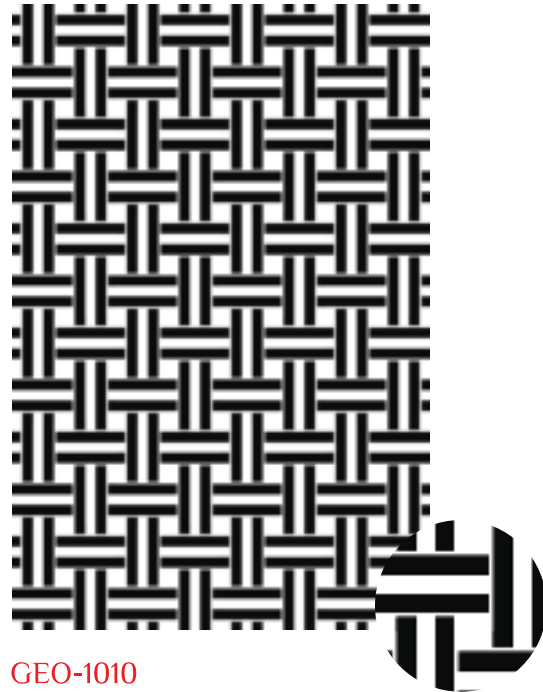
GEO-1007



GEO-1008



GEO-1009



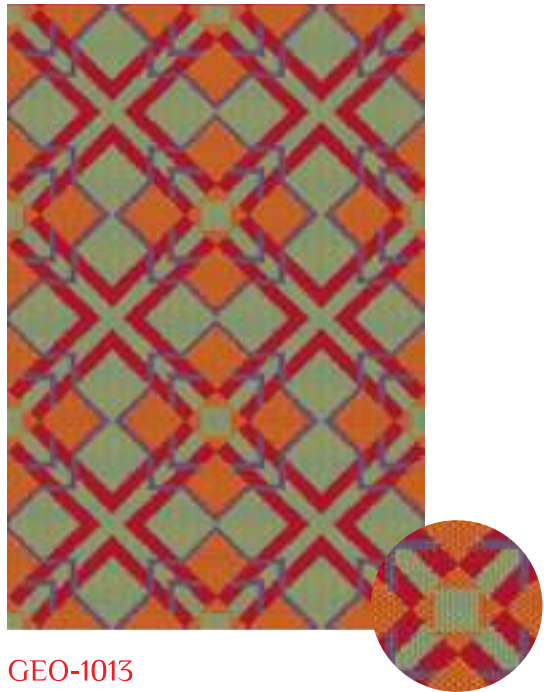
GEO-1010



GEO-1011



GEO-1012



GEO-1013



GEO-1014



GEO-1015



GEO-1016



GEO-1017



GEO-1018



GEO-1019



GEO-1020





GEOMETRIC ABSTRACT

All Our Rugs can be recycled, making it extra Eco-Friendly

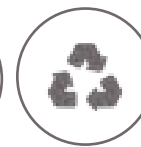
S
I
Z
E
S

CM	INCH	FOOT
90 x 150	36 x 60	3 x 5
90 x 180	36 x 72	3 x 6
120 x 180	48 x 72	4 x 6
150 x 210	60 x 84	5 x 7
150 x 240	60 x 96	5 x 8
180 x 270	72 x 108	6 x 9
240 x 300 (FOLDING)	96 x 120	8 x 10
270 x 360 (FOLDING)	108 x 144	9 x 12

Standard width are as follows
90, 120, 150, 180, 240, 270



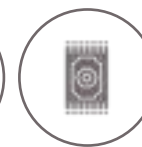
Reversible



Recyclable



LightWeight



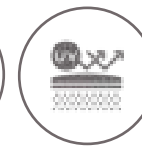
Stylish



Durable



Indoor / Outdoor
Rugs

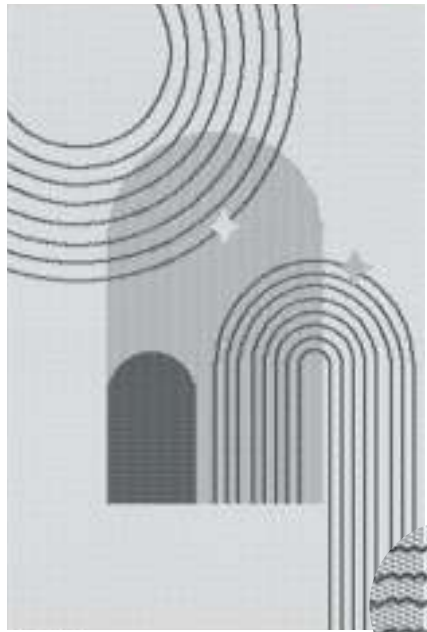


UV
Resistance



Washable

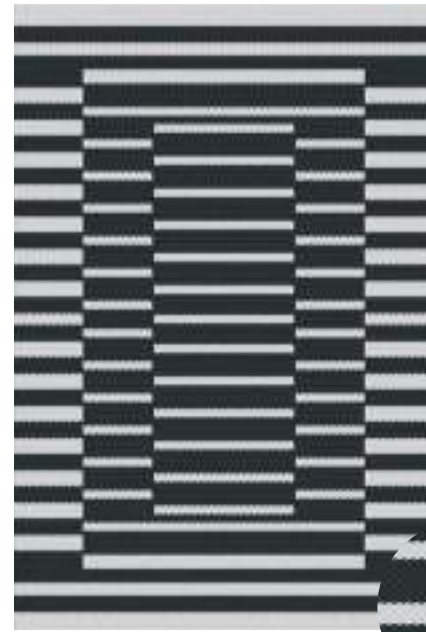




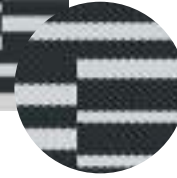
GA-1001



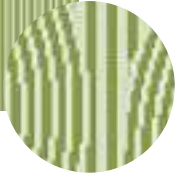
GA-1002



GA-1003



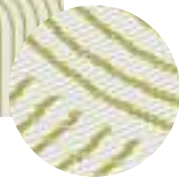
GA-1004



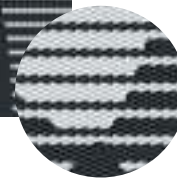
GA-1005



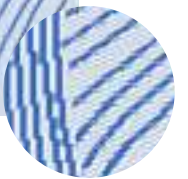
GA-1006



GA-1007



GA-1008



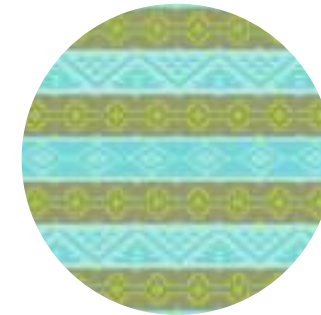
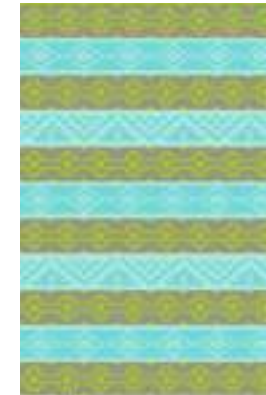


GEOMETRIC STRIPES

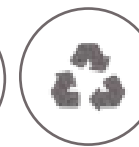
The indoor/Outdoor rugs are super easy to clean. shaking off the rug would take most dirt off it. you can also vacuum, wipe off with a dry or damp cloth & wash with a garden hose or in the bathtub using water

S I Z E S	CM	INCH	FOOT
	90 x 150	36 x 60	3 x 5
90 x 180	36 x 72	3 x 6	
120 x 180	48 x 72	4 x 6	
150 x 210	60 x 84	5 x 7	
150 x 240	60 x 96	5 x 8	
180 x 270	72 x 108	6 x 9	
240 x 300 (FOLDING)	96 x 120	8 x 10	
270 x 360 (FOLDING)	108 x 144	9 x 12	

Standard width are as follows
90, 120, 150, 180, 240, 270



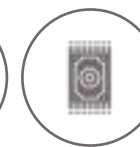
Reversible



Recyclable



LightWeight



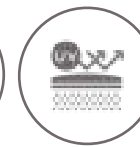
Stylish



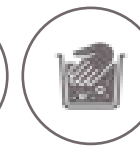
Durable



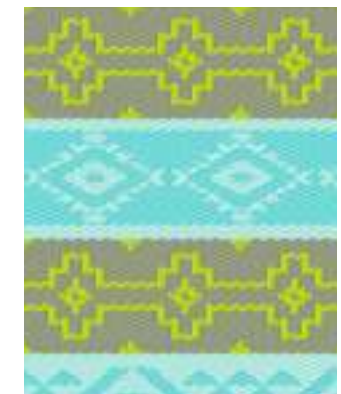
Indoor / Outdoor
Rugs



UV
Resistance

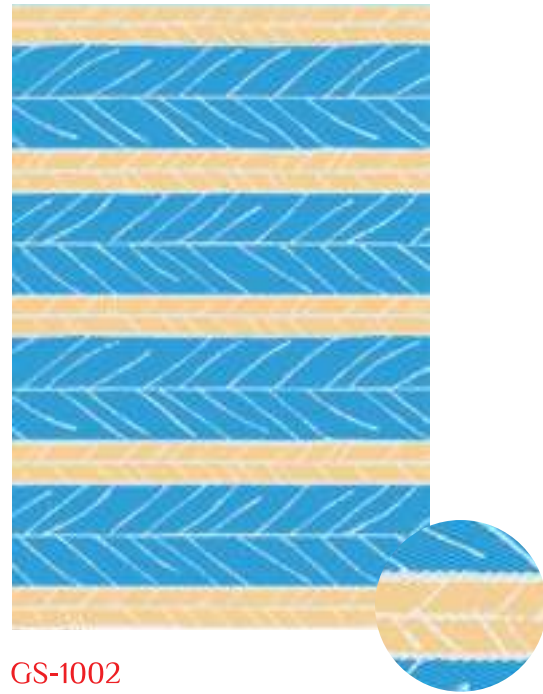


Washable





GS-1001



GS-1002



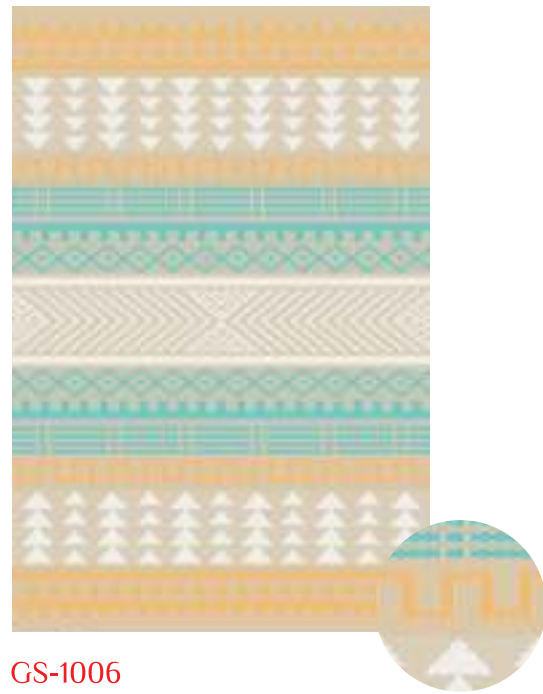
GS-1003



GS-1004



GS-1005



GS-1006



GS-1007



GS-1008



MODERN

Some rugs are more durable than others, but typically you can expect to replace an outdoor rug every couple of years if you leave it exposed to the elements year-round. They will last longer if you put them in a covered area, and keep them clean.

SIZES

CM	INCH	FOOT
90 x 150	36 x 60	3 x 5
90 x 180	36 x 72	3 x 6
120 x 180	48 x 72	4 x 6
150 x 210	60 x 84	5 x 7
150 x 240	60 x 96	5 x 8
180 x 270	72 x 108	6 x 9
240 x 300 (FOLDING)	96 x 120	8 x 10
270 x 360 (FOLDING)	108 x 144	9 x 12

Standard width are as follows
90, 120, 150, 180, 240, 270



Reversible



Recyclable



LightWeight



Stylish



Durable



Indoor / Outdoor
Rugs

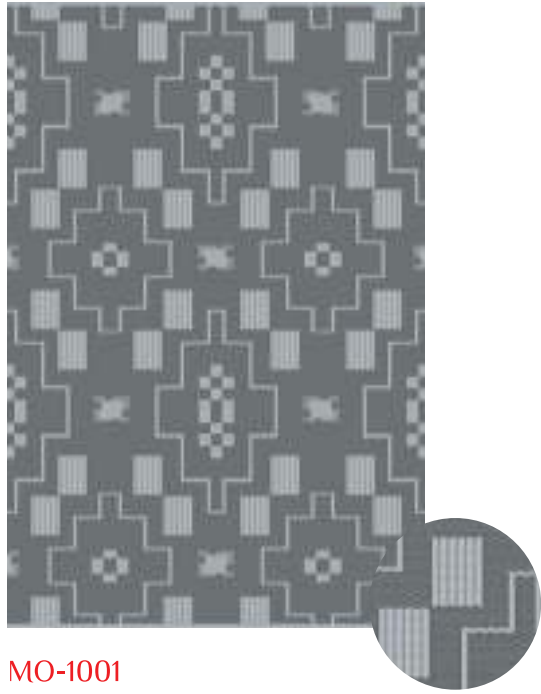


UV
Resistance

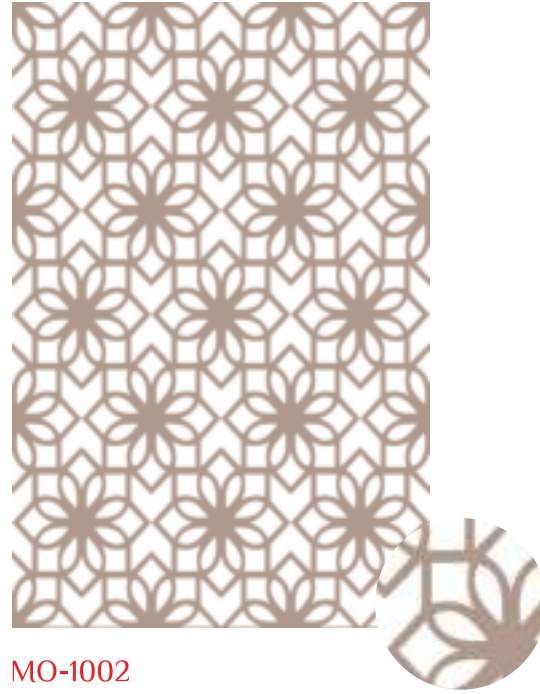


Washable

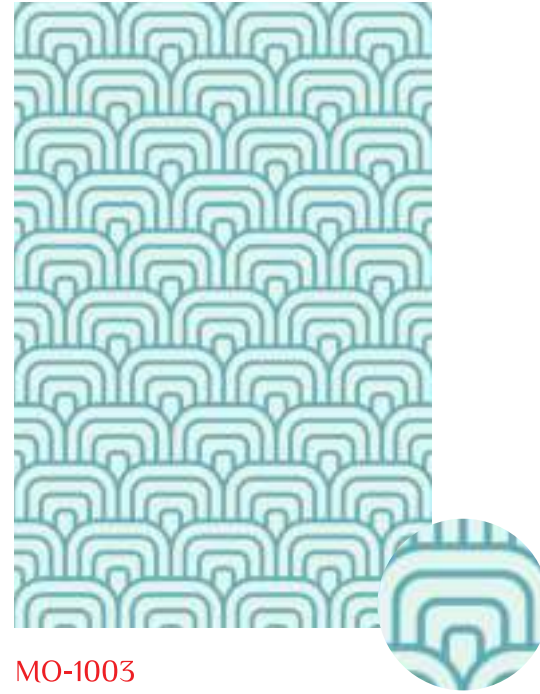




MO-1001



MO-1002



MO-1003



MO-1004



MO-1005



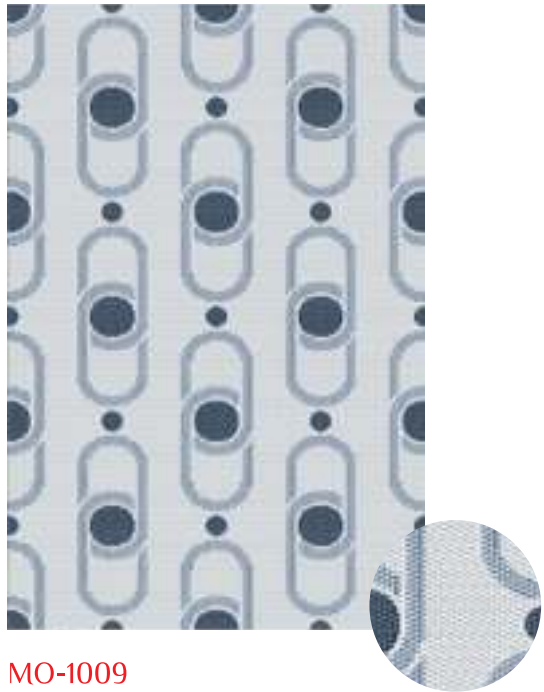
MO-1006



MO-1007



MO-1008



MO-1009



MO-1010



MO-1011



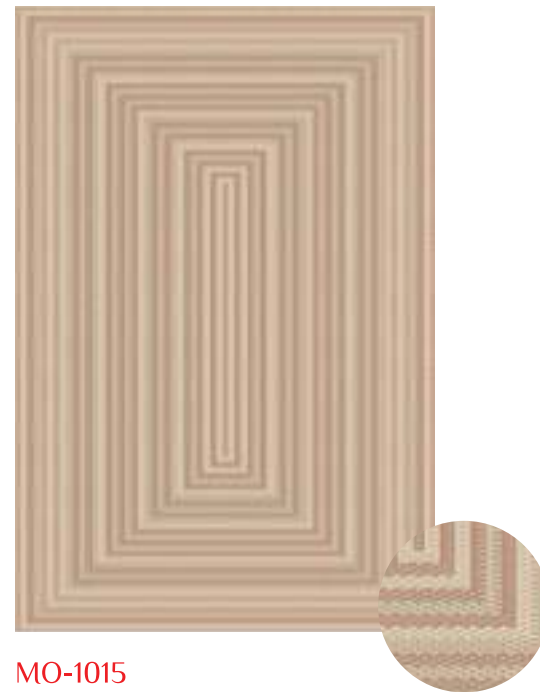
MO-1012



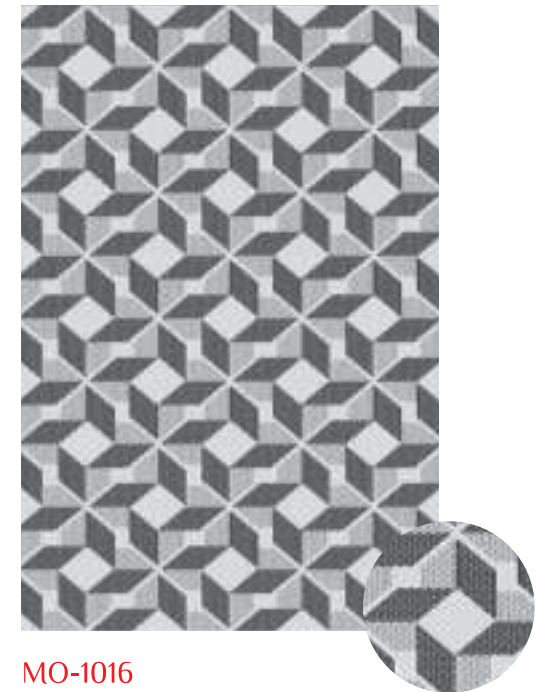
MO-1013



MO-1014



MO-1015



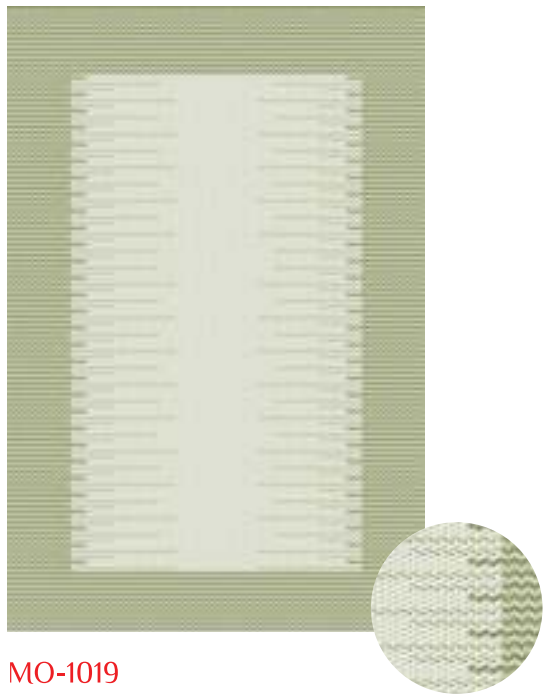
MO-1016



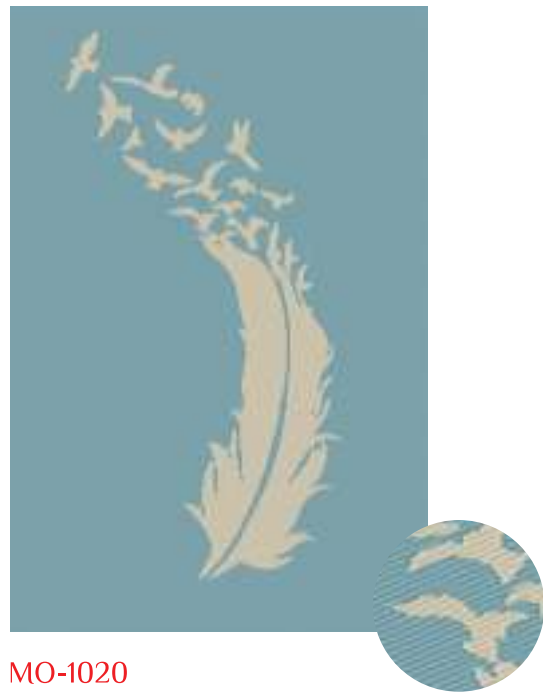
MO-1017



MO-1018



MO-1019



MO-1020



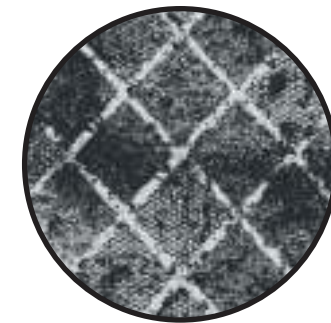


DISTRESSED

We use high-quality performance ultraviolet stabilizers, these stabilizers work by absorbing or screening out UV Radiation & preventing damage that could happen to the rugs.

	CM	INCH	FOOT
S I Z E S	90 x 150	36 x 60	3 x 5
	90 x 180	36 x 72	3 x 6
	120 x 180	48 x 72	4 x 6
	150 x 210	60 x 84	5 x 7
	150 x 240	60 x 96	5 x 8
	180 x 270	72 x 108	6 x 9
	240 x 300 (FOLDING)	96 x 120	8 x 10
	270 x 360 (FOLDING)	108 x 144	9 x 12

Standard width are as follows
90, 120, 150, 180, 240, 270



Reversible



Recyclable



LightWeight



Stylish



Durable



Indoor / Outdoor
Rugs



UV
Resistance



Washable





DIST-1001



DIST-1002



DIST-1003



DIST-1004



DIST-1005



DIST-1006



DIST-1007



DIST-1008



DIST-1009



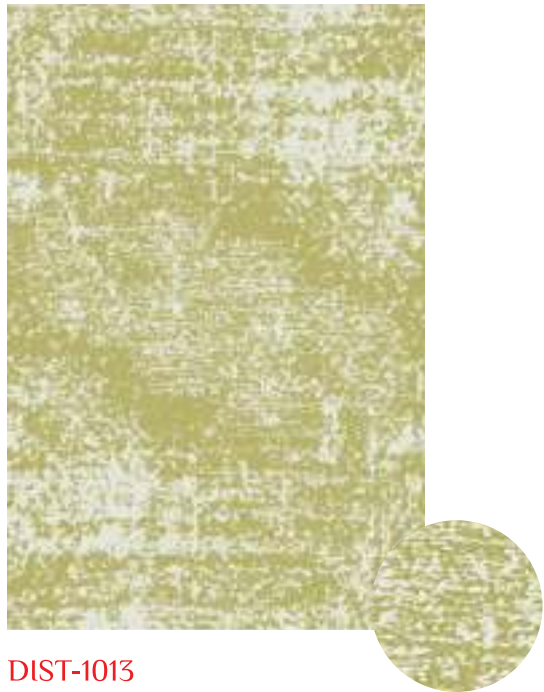
DIST-1010



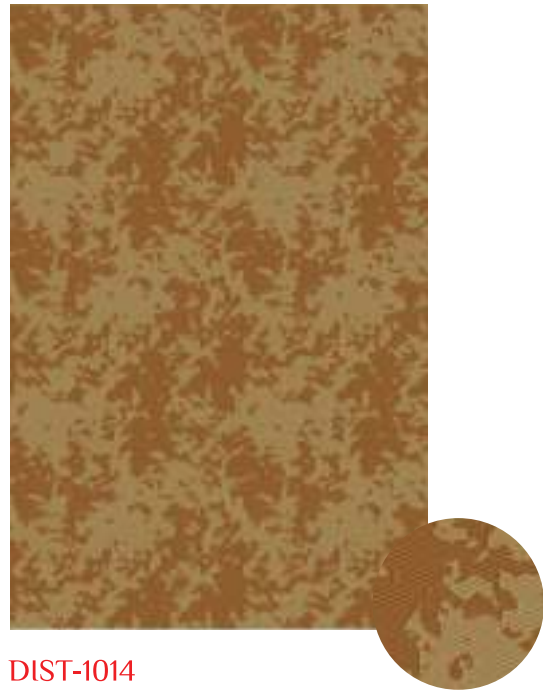
DIST-1011



DIST-1012



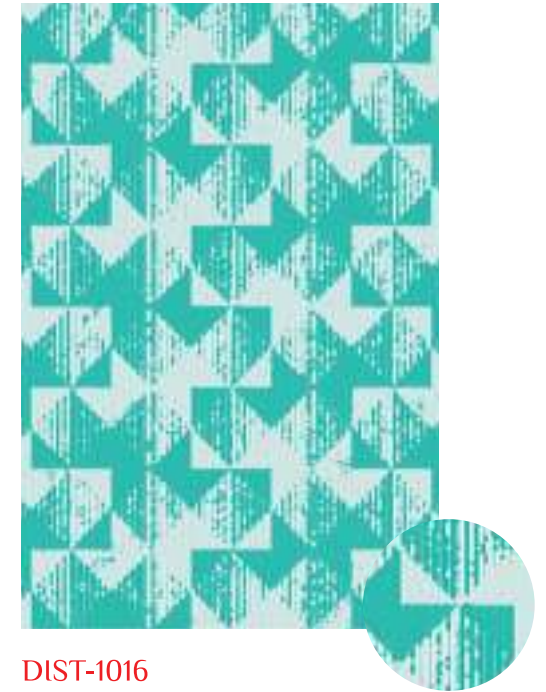
DIST-1013



DIST-1014



DIST-1015



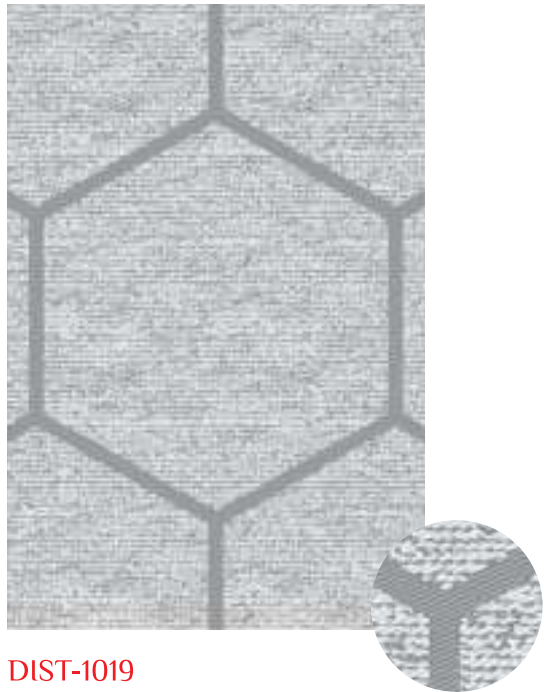
DIST-1016



DIST-1017



DIST-1018



DIST-1019



DIST-1020





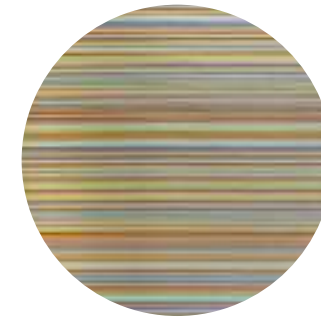
STRIPES & WEAVER

All Our Rugs can be recycled, making it extra Eco-Friendly

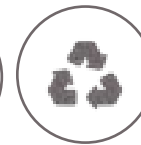
S
I
Z
E
S

CM	INCH	FOOT
90 x 150	36 x 60	3 x 5
90 x 180	36 x 72	3 x 6
120 x 180	48 x 72	4 x 6
150 x 210	60 x 84	5 x 7
150 x 240	60 x 96	5 x 8
180 x 270	72 x 108	6 x 9
240 x 300 (FOLDING)	96 x 120	8 x 10
270 x 360 (FOLDING)	108 x 144	9 x 12

Standard width are as follows
90, 120, 150, 180, 240, 270



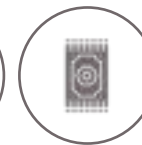
Reversible



Recyclable



LightWeight



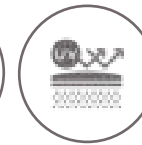
Stylish



Durable



Indoor / Outdoor
Rugs



UV
Resistance



Washable





WS-1001



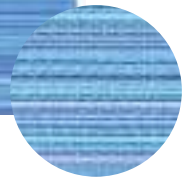
WS-1002



WS-1003



WS-1004



ST-1001



ST-1002



ST-1003



ST-1004





FLORAL

The indoor/Outdoor rugs are super easy to clean, shaking off the rug would take most dirt off it. you can also vacuum, wipe off with a dry or damp cloth & wash with a garden hose or in the bathtub using water

	CM	INCH	FOOT
S I Z E S	90 x 150	36 x 60	3 x 5
	90 x 180	36 x 72	3 x 6
	120 x 180	48 x 72	4 x 6
	150 x 210	60 x 84	5 x 7
	150 x 240	60 x 96	5 x 8
	180 x 270	72 x 108	6 x 9
	240 x 300 (FOLDING)	96 x 120	8 x 10
	270 x 360 (FOLDING)	108 x 144	9 x 12

Standard width are as follows
90, 120, 150, 180, 240, 270



Reversible



Recyclable



LightWeight



Stylish



Durable



Indoor / Outdoor
Rugs



UV
Resistance



Washable





FLO-1001



FLO-1002



FLO-1003



FLO-1004



FLO-1005



FLO-1006



FLO-1007



FLO-1008



FLO-1009



FLO-1010



FLO-1011



FLO-1012



FLO-1013



FLO-1014



FLO-1015



FLO-1016



FLO-1017



FLO-1018



FLO-1019



FLO-1020



FLO-1021



FLO-1022



FLO-1023



FLO-1024



CAMPING MATS

Most of our rugs are reversible, so you get two looks for the price of one!

SIZES	FOOT
	8 x 10
	8 x 12
	9 x 12
	9 x 16



Reversible



Recyclable



LightWeight



Stylish



Durable



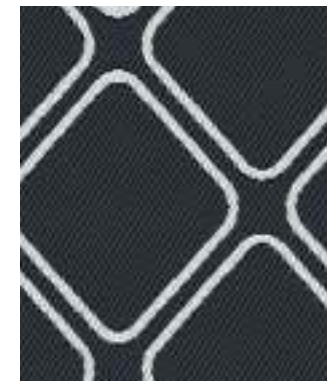
Indoor / Outdoor
Rugs



UV
Resistance

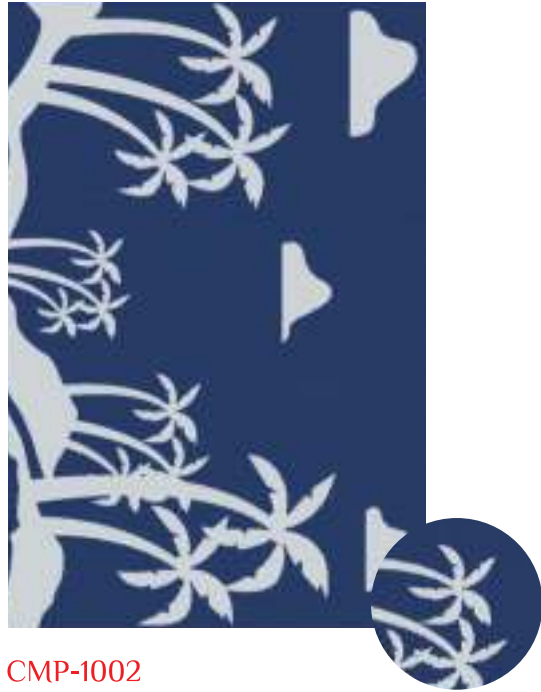


Washable





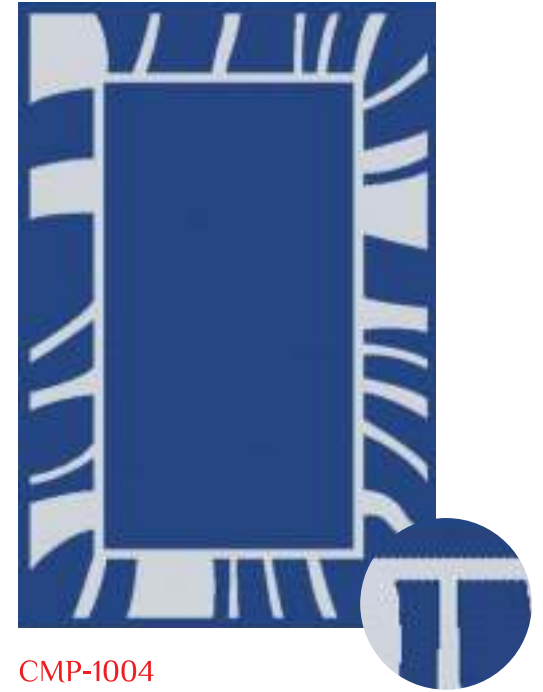
CMP-1001



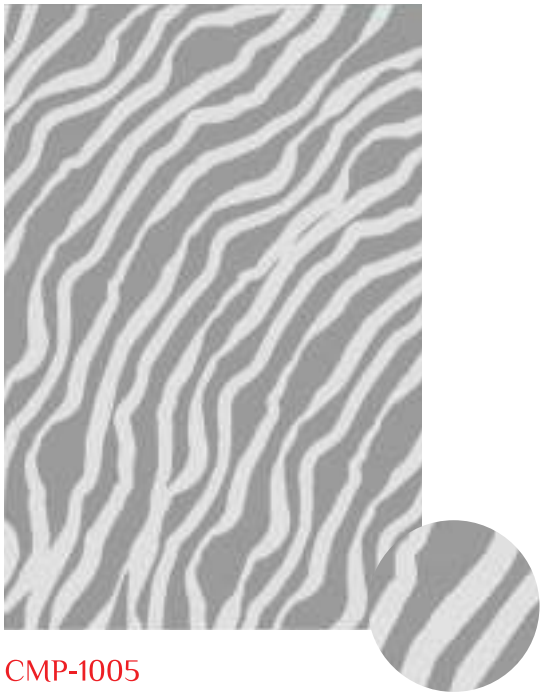
CMP-1002



CMP-1003



CMP-1004



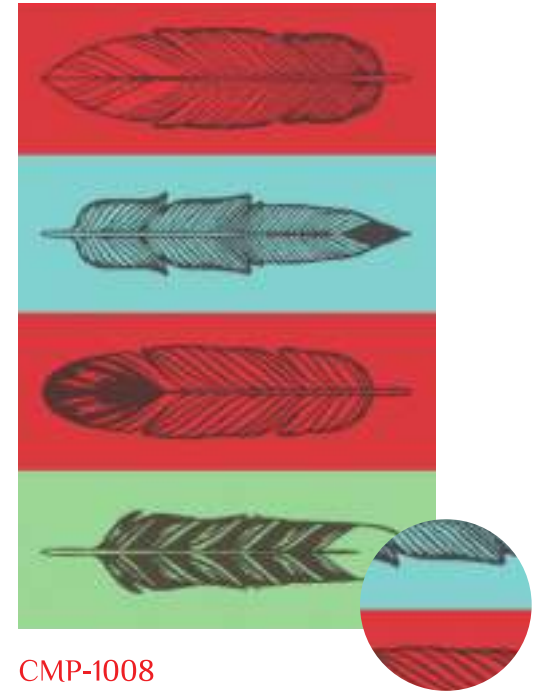
CMP-1005



CMP-1006



CMP-1007



CMP-1008



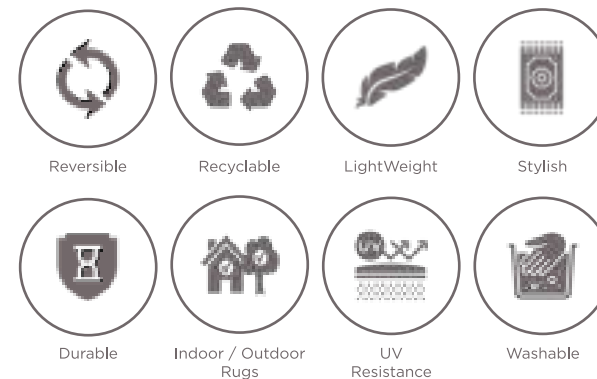
ROUND

All Our Rugs can be recycled, making it extra Eco-Friendly

S
I
Z
E
S

CM	INCH	FOOT
90	36	3
120	48	4
150	60	5
180	72	6

Standard width are as follows
90, 120, 150, 180, 240, 270





RO-1001



RO-1002



RO-1003



RO-1004



RO-1005



RO-1006



RO-1007



RO-1008



HANDYMAT

All Our Rugs can be recycled, making it extra Eco-Friendly

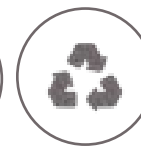
SIZES

CM	INCH	FOOT
90 x 150	36 x 60	3 x 5
90 x 180	36 x 72	3 x 6
120 x 180	48 x 72	4 x 6
150 x 210	60 x 84	5 x 7
150 x 240	60 x 96	5 x 8
180 x 270	72 x 108	6 x 9

Standard width are as follows
90, 120, 150, 180



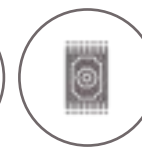
Reversible



Recyclable



LightWeight



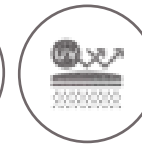
Stylish



Durable



Indoor / Outdoor
Rugs



UV
Resistance

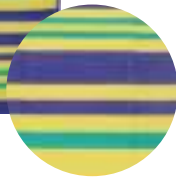


Washable

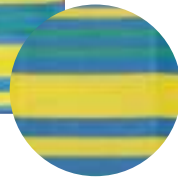




HM-1001



HM-1002



HM-1001



HM-1002



HM-1003



HM-1004



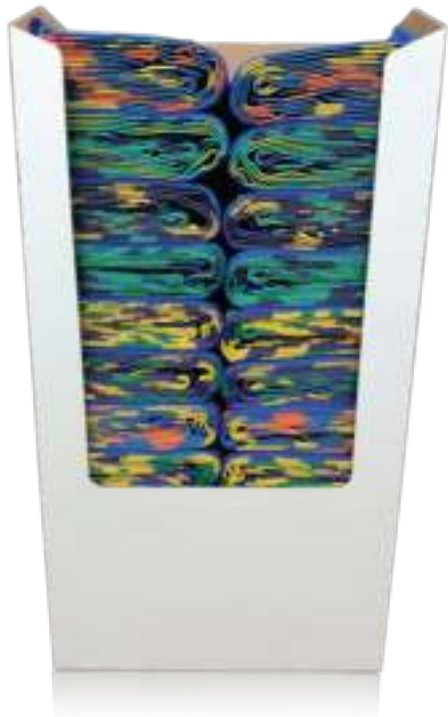
HM-1003



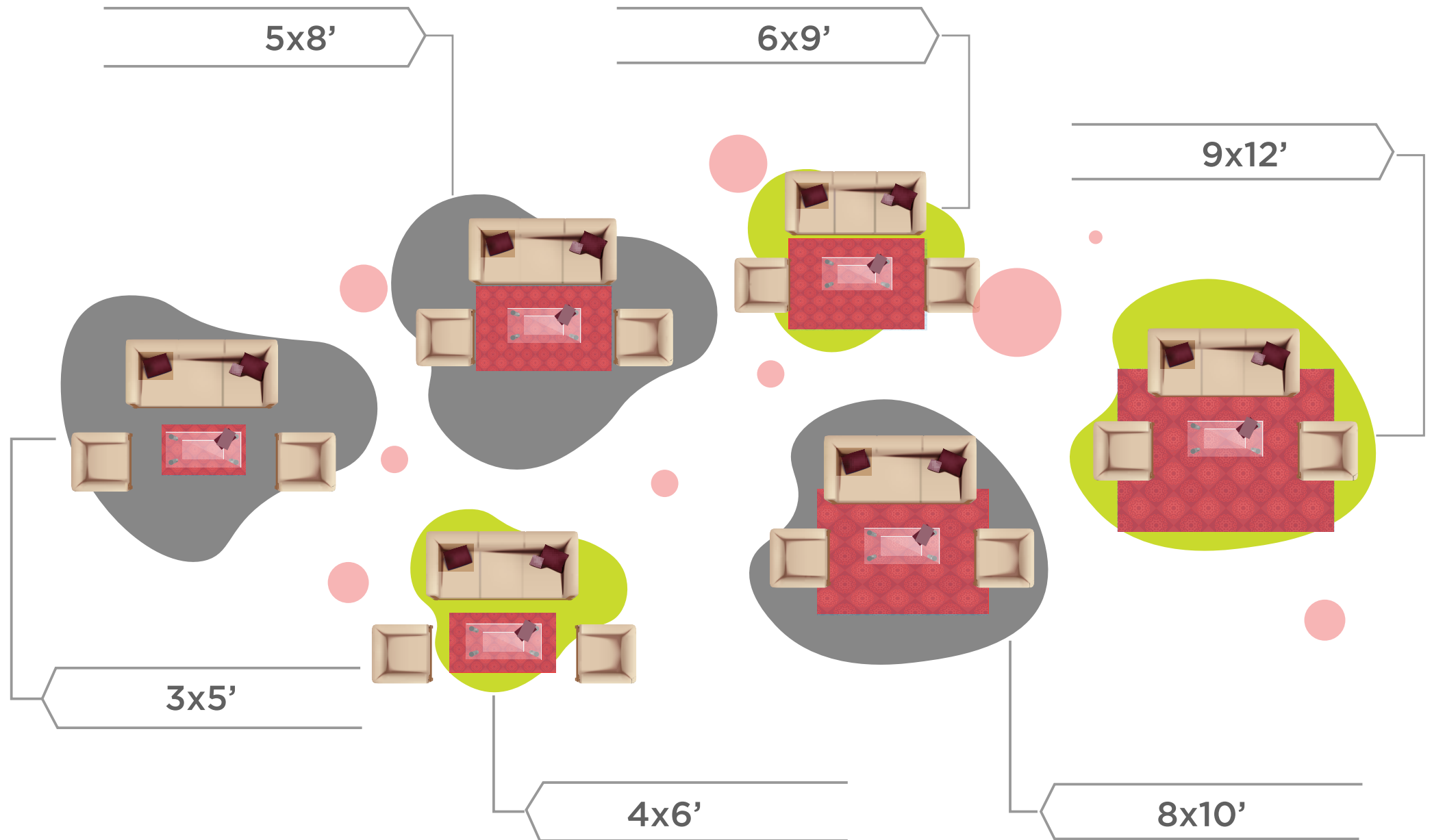
HM-1004







RUGS BY SIZES



STITCHED LABEL

HDPE POLY BAG

LDPE POLY BAG



Front side

Back Side



Bale Mark

4 Pc Solid Back In LDPE Bag 400 Guage

200 PP Bag



ROLL FACE OUT



Header card with elastic band

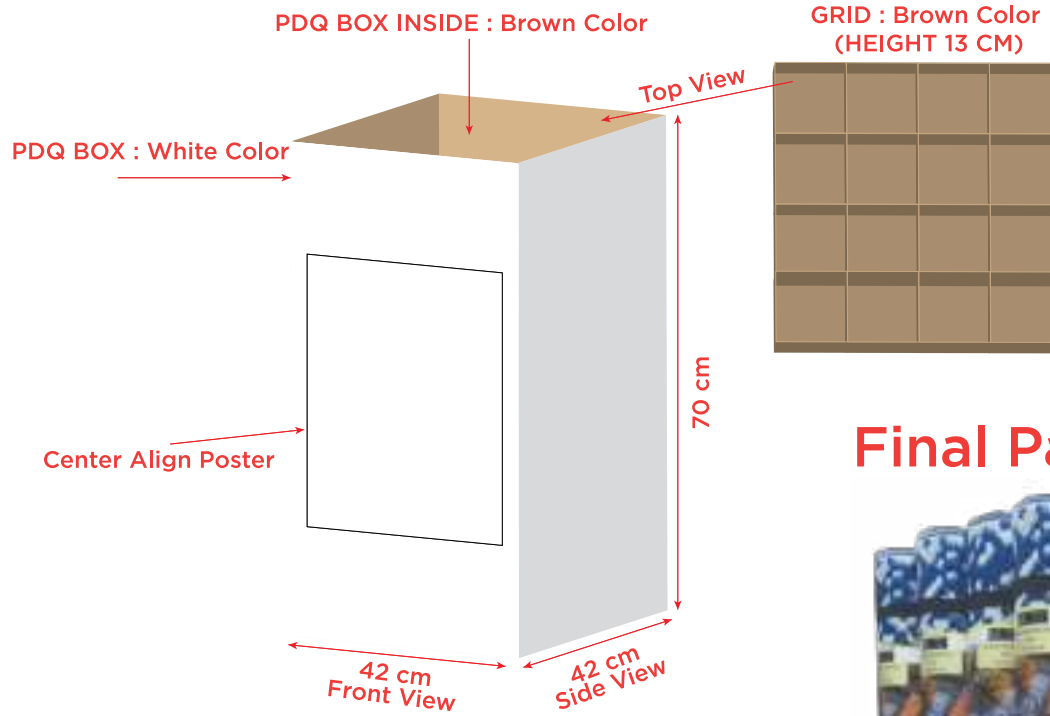
Header card with elastic band

Elastic Band Placement 4 to5 Inch from bottom edge

STANDARD PACKAGING

We have standard packaging options for our products. The rugs are individually packed in poly bags and then in HDPE bales. We also do PDQ packing as per the customer's requirement.

PACKAGING

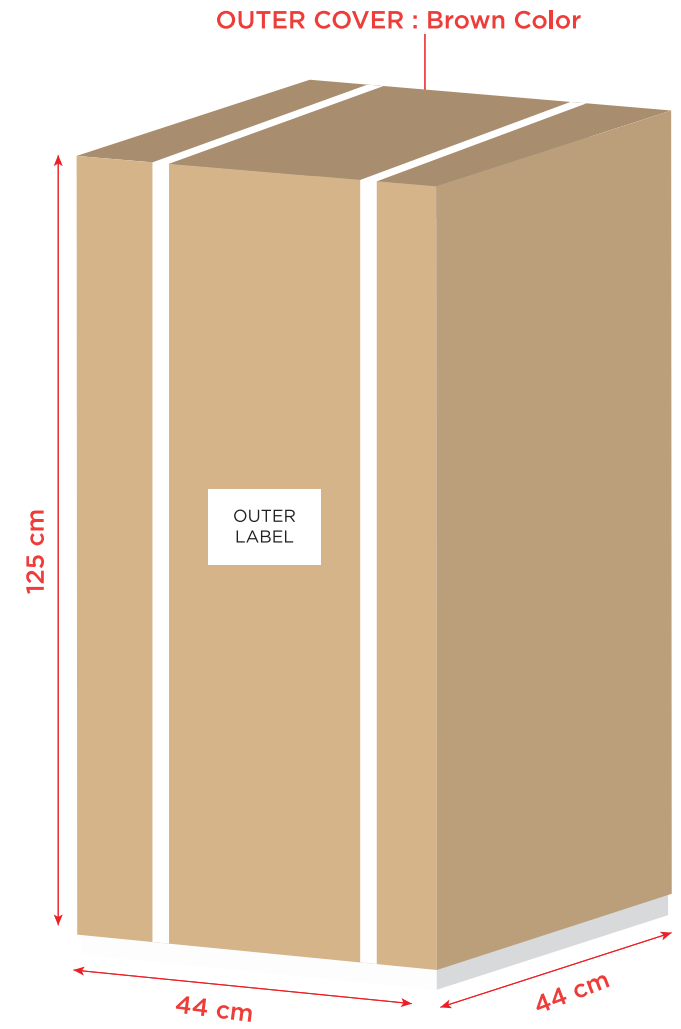


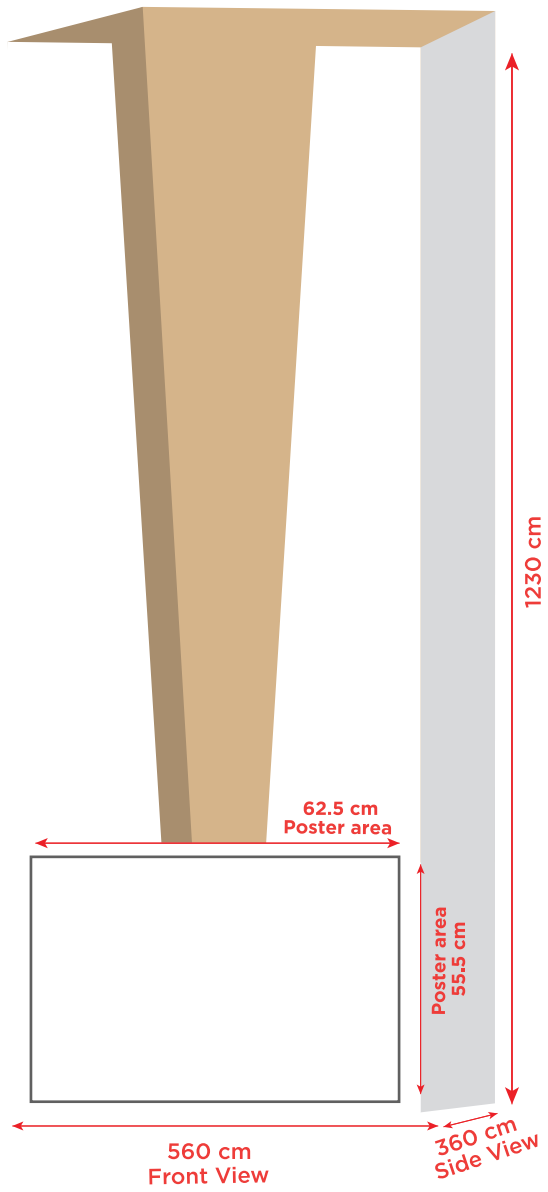
LOADING IN PDQ BOXES AS FOLLOWS: -

CM	PCs. PDQ	BOXES
90 x 150	20	372
120 x 180	16	278
150 x 210	16	186
150 x 240	8	309
180 x 270	8	230

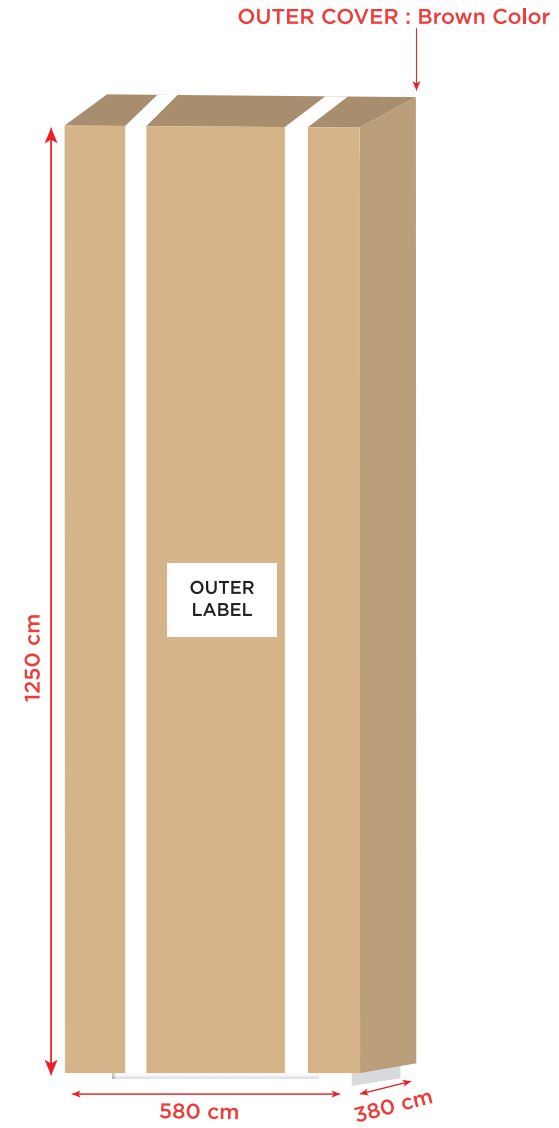
LOADING IN PDQ BOXES FOR 40ft HC.

Final Packing





Final Packing



LOADING IN PDQ BOXES AS FOLLOWS: -

CM	PCs, PDQ	BOXES
120 x 180	24	260

C U T O U T P D Q
P A C K A G I N G



Virgin

Virgin plastic rugs are made using premium quality virgin polypropylene granules and recycled plastic rugs are made using recycled polypropylene granules.



Recycle

Plastic recycling encompasses several processes through which plastic waste is collected and converted back into useful plastic, instead of being simply disposed of

There aren't any big differences between these two rugs, and in both the rugs plastic straws are tightly woven together to offer strength and durability.

NOTE

Virgin

- Highest quality composition rugs in this category.
- Excellent glossy effect
- Tightly woven
- Longest life
- Accuracy in colors
- Fresh feel Excellent appearance

50%-50%:

- Best alternative options as compared to Virgin quality mats.
- Accuracy in colors
- Slight impact on durability as 50% gloss
- Fresh feel
- No difference in the first appearance when compared to Virgin quality

Recycle premium mats:

- Tightly woven
- Top demanding composition in Recycle option
- Better as compared recycle regular
- Cost-effective

Regular Standard:

- Matt effect
- Made in any color and GSM
- Tightly woven
- Feel not as fresh as compared to virgin
- Accuracy in colors
- Ideal product for low-cost Market

UV Resistant

We use high-quality performance ultraviolet stabilizers, these stabilizers work by absorbing or screening out UV radiation and preventing damage that could happen to the rugs. We have tested report for direct sunlight of 300 hours. For Colors We use high-quality master batches, pigments, these master batches & pigments are known for their excellent resistance to fading when exposed to light. They also tend to be more resistant to fading when exposed to open air and heat.

Q
M
P
A
S
I
T
Y
O
N

Odor Free Samples Swatches to understand More

GSM

The rugs can be between 350 GSM to 600 GSM per the customer/buyer requirement in all four compositions. 400 and 440 are more popular gsm.

Thickness

About 2mm to 3mm, depending upon the GSM. It's sturdier and thicker than a beach mat or bamboo table mat. Despite being relatively thin, the rug is surprisingly bouncy underfoot.

Colors in Mats

For most of the designs, we can use a maximum of four colors only, but there are some designs (weaver) on which we can use more colors.

T A P P I N G
&
H E M M I N G



Solid Color Hemming

Hemming is a border of 50 cards, which is a solid color, the same color border appears on the front and back, and on the same is folded and stitched. Solid color hemming is the best as it matches with the designs & colour of the rugs & doesn't add any extra cost.



Two Color Hemming

Hemming has a limit of 50 cards, which are of two colors, interchangeable back and forth, and on the same is folded and stitched.



Color Tapping

Taping has a border of 20-30 cards, which are of solid colors, tapered on top of any color, and then stitched over with tape.

- **The cost difference in qualities compared to recycle regular.**

Virgin almost 19%-20% higher.

50/50 is almost 12%-14% higher

Recycle premium than Regular standard ~ Premium is 6%-8% higher.

- **Difference between recycle premium and recycle regular.**

Premium is pre-consumed plastics manufacturing waste which is recycled once or twice only & Regular is post-consumed plastic waste recycled 3 to 5 times. Yes, both are recycled.

- **Popular GSM -**

- 400 and 440 are more popular

- **Recommended GSM for 4 different qualities**

- 440 GSM is the best choice (the width limit for recycle regular is 6ft Last)

- **Suggested Numbers of colors in a mat**

Use Maximum 2 Colors in a Mat if you use 3 and 4 colors the production output gets affected and due to this higher rejection cost - the extra effect is 2% for 3 colors and 4% respectively

- **Choice in Packing**

For full utilization of the container LDPe Packing & for Easy Handling PDQ Packing.

- **Sample Approval**

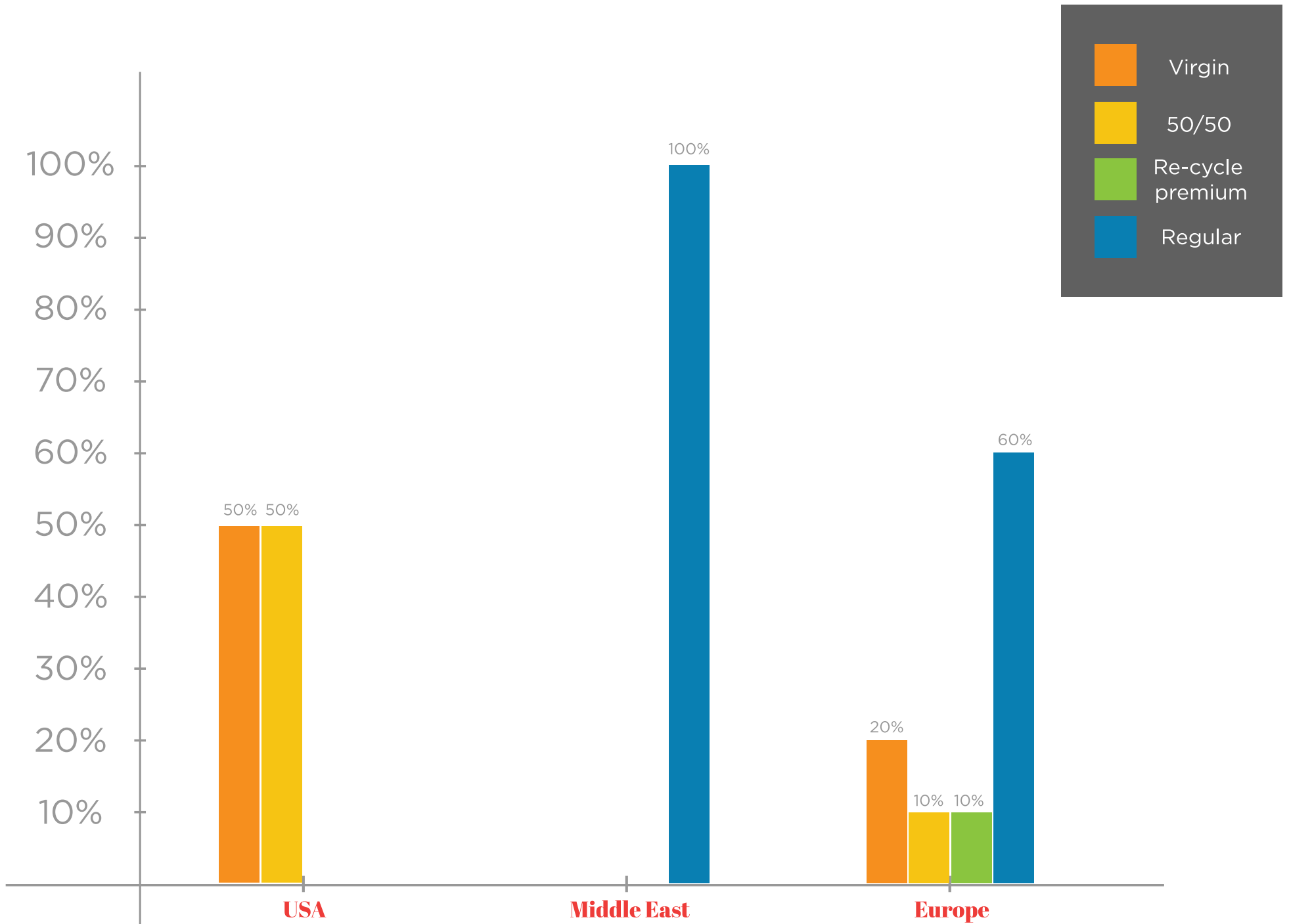
Please be sure to get pre-production sample with the final packaging approval.

We appreciate the pre-shipment inspection as well

- **Guidance**

- Plan your inventory before peak season which is from October to March

AXIS TITLE





Sahil
— Since 1986 —

**When nothing fits,
our rugs makes
your floor a hit.**





Corporate Office :

603/604, 6th Floor, Marathon Icon,
Off G.K. Marg, Opp. Peninsula Corporate,
Lower parcel (west) Mumbai - 400013, India
Tel No: +91 22 61441900
Phone No. : +91 82862 28011
Email Id : bahauddin@sahilplastics.com

Factory Add:

Gut no. 184, Jogeshwari,
Adjacent to 'L' Sector,
MIDC Waluj - Aurangabad - 431 136.
Phone No. : +91 96730 06606