

Home

Cleaning & Care expert

Hard to find and lucky to have



DANA2024
TECHNOLOGY CATALOG

phone: 0731- 58520819

fax: 0731- 58520819

www.xtdana.com

www.dano.en.alibaba.com

<https://elna.en.alibaba.com>

email:doris@xtdana.com.cn

email:dannyzhao@xtdana.com.cn

7th Floor,Changtang Building,Xiaguang Road,
Yuetang District,Xiangtan city,Hunan, china





We, Xiangtan Dana Technology Co.,Ltd is a professional manufacturer of enamel cookware, kitchenware, household cleaning tools (Vacuum Cleaner, Manual cleaning tools...) integrating research, development, production, sales and service together.Specialized in Enamelware industry for more than 15 years. Our factory employs more than 350workers, and Dana people have continuously tried to improve product quality, introducing auto pro-duction lines and advanced technology from Germany.

Currently Dana products is exported to America, France, England, Malaysia, Mexico, Spain, Germany and 20 other countries and regions.Now we are working with Auchan and Walmart . our company has always focus on research, development and innovation, and designs more than 20 new products every year. Dana also built our own brand "ROADMAP",sold self-developed products by well-known platforms --- Amazon.com Dana factory already passed BSCI and FCCA audit , and most of Dana cleaning tools have obtained safety standards certifications such as CE,GS, EMC,CB. KC,ETL.CCC.etc.

Quality first will always be our purpose, making sure a healthy and a happy life for the customers. We are glad to work together with you and finally bring you the satisfied products.

CONTENS

Vacuum Cleaner **02 - 13**

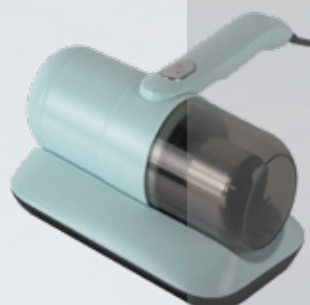
UV dust mites vacuum cleaner
Cordless handy /Rechargeable /
AC handheld vacuum cleaner

Electric Spin Scrubber **14 - 15**

Manual cleaning tools **16 - 21**

Massage Pillow&Cushion **22 - 23**

Electric Kettle **24 - 26**



EL1-P1001A/B



Features:

- ▶ Mini Light weight design
- ▶ Vehicle and household use
- ▶ With battery capacity indication
- ▶ With USB charging wire
- ▶ With dust cup lid, prevent dust spillover
- ▶ Dust capacity: 0.2L
- ▶ Basic accessories: 2 in 1 brush, USB wire
- ▶ Optional: Plastic tubes, Aluminum tubes, Connector, Floor brush, Charger

Model	Power	Li-ion battery capacity	Motor	Vacuum kPa	noise dB	Product size mm	Color box size mm	Carton size mm	Loading qty
EL1-P1001A	DC50W	7.4V 2000mAh 7.4V 2200mAh	Brush motor	≥ 4.5	≤ 72	320x75x90	Standard configuration: 85x85x336	Standard configuration: 360x350x275(12pcs/ctn)	G.W./N.W.: 10kgs/9.5kgs Standard configuration: 9840pcs/20'GP 20840pcs/40'GP 24000pcs/40'HQ High configuration: 4200pcs/20'GP 8760pcs/40'GP 10320pcs/40'HQ
EL1-P1001B	DC65W	7.4V 2200mAh	Brush motor	≥ 6	≤ 73		High configuration: 355x135x120	High configuration: 560x370x390(12pcs/ctn)	

EL1-P1001LA/B



Features:

- ▶ Mini Light weight design
- ▶ Vehicle and household use
- ▶ With battery capacity indication
- ▶ With USB charging wire
- ▶ With dust cup lid, prevent dust spillover
- ▶ Dust capacity: 0.4L
- ▶ Basic accessories: 2 in 1 brush, USB wire
- ▶ Optional: Plastic tubes, Aluminum tubes, Connector, Floor brush, Charger

Model	Power	Li-ion battery capacity	Motor	Vacuum kPa	Noise dB	Product size mm	Color box size mm	Carton size mm	Loading qty
EL1-P1001LA	DC50W	7.4V 2000mAh 7.4V 2200mAh	Brush motor	≥ 4.5	≤ 72	370x75x90	Standard configuration: 85x85x380	Standard configuration: 390x360x270(12pcs/ctn)	G.W./N.W.: 10kgs/9.5kgs Standard configuration: 9000pcs/20'GP 18720pcs/40'GP 21600pcs/40'HQ High configuration: 3720pcs/20'GP 7400pcs/40'GP 8880pcs/40'HQ
EL1-P1001LB	DC65W	7.4V 2200mAh	Brush motor	≥ 6	≤ 73		High configuration: 400x135x120	High configuration: 560x415x390 (12pcs/ctn)	

EL3-JVC005A/B Cordless Vacuum Cleaner



EL3-JVC005A

Mini lightweight design For car & household using.
 Battery capacity indicator.
 USB Charge
 Convenient storage
 Dust capacity:700ml
 Basic accessories included: crevice nozzle, crevice brush, blowing nozzle, small blowing nozzle, Vacuum pumping nozzle, wide brush, USB charging cable. Power: DC 60W brush motor .
 li-ion battery capacity: 7.4 V, 2*1800mAh .
 Vacuum kPa ≥ 5.5 .
 Noise dB ≤ 75 dB.
 Product size mm: 280*220*60 .
 Color box size mm: 275*260*70 .
 Carton size mm: 565*380*530 (20pcs/ctn) .
 Loading qty :
 5100pcs/20 GP .
 10500pcs/40 GP.
 12380pcs/40 HQ.



EL3-JVC005B

Mini lightweight design For car & household using.
 Battery capacity indicator.
 USB Charge
 Convenient storage
 Dust capacity:700ml
 Basic accessories included: crevice nozzle, crevice brush, blowing nozzle, small blowing nozzle, Vacuum pumping nozzle, wide brush, USB charging cable. Power: DC 75W brush motor .
 li-ion battery capacity: 7.4 V, 2*2000mAh .
 Vacuum kPa ≥ 14 .
 Noise dB ≤ 75 dB.
 Product size mm: 280*220*60 .
 Color box size mm: 275*260*70 .
 Carton size mm: 565*380*530 (20pcs/ctn) .
 Loading qty :
 5100pcs/20 GP .
 10500pcs/40 GP.
 12380pcs/40 HQ.

EL1-P1003<AC>



Features:

- Smart and light design, easy to clean
- With two high efficiency pad heads, flapping area is bigger and more cleaner
- Optimum design of suction nozzle without dust leakage
- HEPA and stainless steel filter cleaning system, without second-pollution
- Transparent dust box design, capacity: 0.5L
- Power cord length: 4m
- UV length: 253.7nm
- Flapping speed: 8000RPM
- UV light power: 5W
- N.W.: 1.25kgs

Model	Power	Voltage V	Vacuum kPa	Noise dB	Product size mm	Color box size mm	Carton size mm	Loading qty
EL1-P1003AC	300W	100-240	≥ 12	≤ 73	290x246x155	340*190*285	580*350*585 (6pcs/ctn)	G.W./N.W.:11kgs/10.2kgs 1500pcs/20'GP 3060pcs/40'GP 3480pcs/40'HQ

EL1-P1005<AC>



Features:

- With two high efficiency pad heads, flapping area is bigger and more cleaner
- Optimum design of suction nozzle without dust leakage
- UV-H light, up to 100 % more efficiency, to kill bacteria
- Unique UV reflection polymerization patented technology, sterilization efficiency increased by 40%(optional)
- More filter system, to avoid second pollution
- Easy to clean dust box, dust capacity: 0.5L
- UV length: 253.7nm
- Flapping speed: 8000RPM
- Power cord length: 4m

Model	Power	Voltage V	Vacuum kPa	Noise dB	Product size mm	Color box size mm	Carton size mm	Loading qty
EL1-P1005AC	300W	100-240	≥ 12	≤ 73	230x231x137	265*165*270	565*345*550 (8pcs/ctn)	G.W./N.W.:12.5kgs/12kgs 2120pcs/20'GP 4480pcs/40'GP 5120pcs/40'HQ

EL1-P1007<DC>



Features:

- With two high efficiency pad heads, flapping area is bigger and more cleaner
- Optimum design of suction nozzle without dust leakage
- UV-H light, up to 100 % more efficiency, to kill bacteria
- Unique UV reflection polymerization patented technology, sterilization efficiency increased by 40%(optional)
- More filter system, to avoid second pollution
- Easy to clean dust box, dust capacity: 0.5L
- UV length: 253.7nm
- Flapping speed: 8000RPM

Model	Power	Battery capacity	Vacuum kPa	Noise dB	Product size mm	Color box size mm	Carton size mm	Loading qty
EL1-P1007	100W	DC11.1V, 2500mAh	≥ 8	≤ 73	230x231x137	285*165*270	565*345*550 (8pcs/ctn)	G.W./N.W.:11kgs/10.5kgs 2120pcs/20'GP 4480pcs/40'GP 5120pcs/40'HQ

EL1-P1008<AC>



Features:

- Original design, national invention patent product
- Cyclone separation dust cup and dust storage cup separately disassembled, dust separation efficiency up to 99%
- Digital screen display working mode, real-time monitoring working mode
- Dust sensing indicator timely monitoring cleaning effect
- Ultrasonic assisted to ensure mite removal more thoroughly
- UVC LED sterilization and mite removal light, long life, environmental protection without ozone
- Soft roller brush, protect the surface of the cleaning object

Model	Power	Voltage	Vacuum (kPa)	Noise (dB)	Product size mm	Color box size mm	Carton size mm	Loading qty
EL1-P1008AC	300-500 W	AC100-240V	≥ 12	≤ 75	251x290x147	283*165*320	510x335x585 (6pcs/ctn)	G.W./N.W.:13.5kgs/12.7kgs 1728pcs/20'GP 3540pcs/40'GP 4140pcs/40'HQ

EL1-P1009<DC>



- Hot air anti-mite drying (motor hot air)
- 2 micro switch casters, ensuring ultraviolet radiation without leakage
- Multistage filtration system, to avoid second pollution
- Transparent dust cup, easy to take apart and clean
- Dust cup capacity: cyclone dust cup 0.2L+ dust collecting cup 0.4L
- Max airflow: 1.0m³/min
- Flapping frequency: 12000RPM
- Power cord length: 4m(for AC model)
- Charging method: USB cable Type C (for DC model)

Model	Power	Battery Specification	Vacuum (kPa)	Noise (dB)	Product size mm	Color box size mm	Carton size mm	Loading qty
EL1-P1009DC	120W	DC14.8V, 2500mAh	≥ 9	≤ 74	251x290x147	283*165*320	510x335x585 (6pcs/ctn)	G.W./N.W.:13.5kgs/12.7kgs 1728pcs/20'GP 3540pcs/40'GP 4140pcs/40'HQ

mattress vacuum cleaner

EL1-P1012

Unique dual dust cup air duct patented structure, with a dust separation efficiency of 99%, ensuring that the dust cup filtration system does not clog after long-term use

Digital screen display technology, real-time monitoring working mode

Flexible roller brush, protecting the surface of cleaning materials for safer use

Dust sensing for timely monitoring of cleaning effectiveness (optional)

Ultrasonic assisted mite removal, more thorough mite removal

Optimization design of suction port without cleaning blind spots

Green light shows dust, cleaning is cleaner and more thorough

Fragrance function, pure fragrance eliminates odor and retains fragrance

LED sterilization and mite removal lamp, long lifespan, environmentally friendly and ozone free

Hot air mite removal and dehumidification

Multiple security protection functions, more reassuring to use

Multi stage filtration system to prevent secondary dust pollution

Transparent vacuum cleaner cup for easier disassembly and cleaning

Dust collection capacity: 0.4L

Whole machine power: 500W

Maximum air volume: 1.2m³/min

Vacuum degree: > 15kPa

Beating frequency: 36000RPM

Noise: ≤ 75dBA

Power cord length: 5m



mattress vacuum cleaner **EL1-P1015**

Unique dual dust cup air duct patented structure, with a dust separation efficiency of 99%, ensuring that the dust cup filtration system does not clog after long-term use

Digital screen display technology, real-time monitoring working mode

Ultrasonic assisted mite removal, more thorough mite removal

Ergonomic design, the brush head can rotate 80 degrees and adjust the usage angle in real-time to fit the cleaning surface, making operation easier.

Green light shows dust, cleaning is cleaner and more thorough

LED sterilization and mite removal lamp, long lifespan, environmentally friendly and ozone free

Hot air mite removal and dehumidification

Multiple security protection functions, more reassuring to use

Multi stage filtration system to prevent secondary dust pollution

Transparent vacuum cleaner cup for easier disassembly and cleaning

Dust collection capacity: 0.5L

Whole machine power: 500W

Maximum air volume: 1.2m³ /min

Vacuum degree: > 15kPa

Beating frequency: 36000RPM

Noise: ≤ 75dBA

Power cord length: 5m



mattress vacuum cleaner **EL1-P1018**

Patent dust separation technology, with a dust separation efficiency of 99%, ensures that the dust cup filtration system does not clog after long-term use

Digital screen display working mode, real-time monitoring working mode

Flexible roller brush, protecting the surface of cleaning materials for safer use

Dust sensing indicator for timely monitoring of cleaning effectiveness (optional configuration)

Ultrasonic assisted mite removal, more thorough mite removal

Optimization design of suction port without cleaning blind spots

UVC LED UV sterilization lamp, long lifespan, environmentally friendly and ozone free

Hot air mite removal and drying (motor hot air)

2 micro switch casters to ensure that ultraviolet rays do not leak out

Multi stage filtration system to prevent secondary dust pollution

Transparent vacuum cleaner cup for easier disassembly and cleaning

Technical indicators:

Dust collection capacity: 0.4L

Motor power: 350-400W

Maximum air volume: 1.0m³/min

Vacuum degree:>12kPa

Beating frequency: 12000RPM

Noise: ≤ 75dBA

Power cord length: 5m



EL1-P1010<AC>



Features:

- Simple and lightweight design, easy to operate
- Dust collecting double dust cup design, ensuring the filter system will not be blocked for long-term use
- Digital screen display working mode, real-time monitoring working mode
- Dust sensing indicator timely monitoring cleaning effect
- Ultrasonic assisted to ensure mite removal more thoroughly
- UVC LED sterilization and mite removal light, long life, environmental protection
- LED light auxiliary lighting, more convenient to use

Model	Power	Voltage	Vacuum (kPa)	Noise (dB)	Product size mm	Color box size mm	Carton size mm	Loading qty
EL1-P1010AC	300-500 W	AC100-240V	≥ 12	≤ 75	241.2x223x154.6	272*185*259	555*380*535 (8pcs/ctn)	G.W./N.W.:12.8kgs/12kgs 2000pcs/20'GP 4160pcs/40'GP 4880pcs/40'HQ

EL1-P1011<DC>



- Soft roller brush, protect the surface of the cleaning object
- Hot air anti-mite drying (motor hot air)
- 2 micro switch casters, ensuring ultraviolet radiation without leakage
- Multistage filtration system, to avoid second pollution
- Transparent dust cup, easy to take apart and clean
- Dust cup capacity: 0.4L
- Max airflow: 1.0m³/min
- Flapping speed: 12000RPM
- Power cord length: 4m(for AC model)
- Charging method: USB cable Type C (for DC model)

Model	Power	Battery Specification	Vacuum (kPa)	Noise (dB)	Product size mm	Color box size mm	Carton size mm	Loading qty
EL1-P1011DC	100W	DC11.1V, 2500mAh	≥ 8	≤ 74	241.2x223x154.6	272*185*259	555*380*535 (8pcs/ctn)	G.W./N.W.:12.8kgs/12kgs 2000pcs/20'GP 4160pcs/40'GP 4880pcs/40'HQ

EL1-S2000

Features:

- Low noise design
- High suction power
- With two speed control function
- Easy to clean HEPA filter
- Multistage cyclone filtration system, prevent secondary pollution
- Removable dust cup and battery pack, easy to replace
- Mop with water tank, synchronous cleaning for suction and mop (Optional)
- Dust capacity: 0.70L
- Basic accessories: Aluminium conductive tube, LED flocking roller power brush, 2 in 1 crevice nozzle, 2 in1 brush, Accessory holder
- Optional: Chargeable storage rack, LED soft roller power brush, LED soft fiber power brush, Motorized brush, Mop with water tank, Flexional tube



Model	Power	Battery capacity	Vacuum kPa	Noise dB	Product size mm	Color box size mm	Carton size mm	Loading qty
EL1-S2000A	150W Brush motor	DC22.2V 2000mAh	≥ 10	≤ 75	340*130*220	Standard configuration: 305*135*695 High configuration: 305*175*695	Standard configuration: 710*320*425(3pcs/ctn) High configuration: 710*320*545(3pcs/ctn)	G.W./N.W.:10KGS/9.5KGS Standard configuration: 900pcs/20'GP 1860pcs/40'GP 2130pcs/40'HQ High configuration: 690pcs/20'GP 1530pcs/40'GP 1688pcs/40'HQ
EL1-S2000B	220W Brushless motor	DC22.2V 2000mAh	≥ 20	≤ 72				
EL1-S2000C	250W Brushless motor	DC25.9V 2500mAh	≥ 24	≤ 73				

EL1-S2001

Features:

- Low noise design
- High suction power
- With 3 speed control function
- Easy to clean HEPA filter
- Digital touch screen, easy for the operation
- Multistage cyclone filtration system, prevent secondary pollution
- Removable dust cup and battery pack, easy to replace
- Mop with water tank, synchronous cleaning for suction and mop (Optional)
- Dust capacity: 0.70L
- N.W: 2.83 Kg
- G.W: 3.95 Kg
- Basic accessories: Aluminium conductive tube, LED flocking roller power brush, 2 in 1 crevice nozzle, 2 in 1 brush, Accessory holder
- Optional: Chargable storage rack, LED soft roller power brush, LED soft fiber power brush, Motorized brush, Mop with water tank, Flexional tube



Model	Power	Battery capacity	Vacuum kPa	Noise dB	Product size mm	Color box size mm	Carton size mm	Loading qty
EL1-S2001A	150W Brush motor	DC22.2V 2000mAh	≥ 10	≤ 75	240X304X1188	Standard configuration: 305*135*695 High configuration: 305*175*695	Standard configuration: 710*320*425(3pcs/ctn) High configuration: 710*320*545(3pcs/ctn)	G.W./N.W.:10KGS/9.5KGS Standard configuration: 900pcs/20'GP 1860pcs/40'GP 2130pcs/40'HQ High configuration: 690pcs/20'GP 1530pcs/40'GP 1698pcs/40'HQ
EL1-S2001B	250W Brushless motor	DC25.9V 2500mAh	≥ 25	≤ 73				

EL1-S2002



Features:

- Light weight and easy maneuverability
- High suction power, efficient clean feel
- Suitable for multiple scenes
- Stainless steel mesh, Multistage filtration system
- Charging and store conveniently
- Detachable and washable dust cup
- Easy to clean HEPA filter
- Dust capacity: 0.6L
- Basic accessories: Plastic tubes, Floor brush, 2 in 1 brush
- Optional: Aluminium conductive tube, Aluminium telescopic tube, Electric floor brush, Crevice nozzle, Motorized brush, Accessory holder



Model	Power	Battery capacity	Vacuum kPa	Noise dB	Product size mm	Color box size mm	Carton size mm	Loading qty
EL1-S2002A	150W	DC14.8V 2000mAh	≥ 10	≤ 75	420x105x140	Standard configuration: 245*150*450 High configuration: 308*120*615	Standard configuration: 465*315*510(4pcs/ctn) High configuration: 630*495*325(4pcs/ctn)	G.W./N.W.:8KGS/7.5KGS Standard configuration: 1600pcs/20'GP 3280pcs/40'GP 3760pcs/40'HQ High configuration: 1140pcs/20'GP 2360pcs/40'GP 2720pcs/40'HQ
EL1-S2002B	150W	DC22.2V 2000mAh	≥ 10	≤ 75				

EL1-S2003<AC>



Features:

- Light weight and easy maneuverability
- High suction power, efficient clean feel
- Suitable for multiple scenes
- Upright storage, convenient storage, do not occupy space
- Stainless steel mesh, Multistage filtration system
- Detachable and washable dust cup
- Easy to clean HEPA filter
- Dust capacity: 0.6L
- Multiple optional accessories
- Basic accessories: Plastic tubes, Floor brush, 2 in 1 brush
- Optional: Aluminium telescopic tube, Aluminium tubes, Crevice nozzle, Accessory holder

Model	Power	Voltage V	Vacuum kPa	Noise dB	Product size mm	Color box size mm	Carton size mm	Loading qty
EL1-S2003	600W	100-240V	≥ 15	≤ 74	420x105x140	248*155*455	510*470*330<4PCS/CTN>	G.W./N.W.:9.5KGS/9KGS 1600PCS/20GP 3440PCS/40GP 3920PCS/40HQ

EL1-S2005A<AC>



EL1-S2005B<AC>



Features:

- Stick and portable dual usage
- Mini lightweight design
- Mutistage cyclone separation system
- Easy to clean HEPA filter
- Detachable and washable dust cup
- Detachable handle and floor brush
- Dust cup capacity: 0.5L

Model	Power	Voltage	Vacuum (kpA)	Noise (dB)	Product size mm	Color box size mm	Carton size mm	Loading qty
EL1-S2005A	300-500W Brush motor	100-240	≥ 12	≤ 78	238.5X176.5X1065.5	140X145X548	473X335X602(6pcs/ctn)	G.W./N.W.:16.7kgs/16.2kgs 1800/20'GP 3720pcs/40'GP 4380pcs/40'HQ
EL1-S2005B	300-500W Brush motor	100-240	≥ 12	≤ 78	238.5X176.5X1065.5	155X135X505	560X520X330(8pcs/ctn)	G.W./N.W.:16.7kgs/16.2kgs 2400pcs/20'GP 4960pcs/40'GP 5760pcs/40'HQ

Vacuum cleaner<AC>**EL7-AXS927<AC>**

Product size (after assembly): 258x168x1070mm
 Packing method: inner foam+outer packing box
 Single outer box size: 515x190x225mm (half bottom and half cover)
 4 packs and 1 outer box size: 540 * 400 * 480 (half bottom and half cover)
 Net weight of product: 1.7Kg
 Single unit gross weight: 2.0Kg
 Gross weight of the whole box: 9.5Kg
 Line length: 5 meters
 Rated voltage: 220V~
 Plug standard: CCC national standard two plug
 Rated power: 700W
 Main motor power: 400W
 Maximum vacuum degree: 15.0Kpa
 Filtering method: High efficiency HEPA
 Noise: ≤ 80dB
 Product Material: ABS/PP
 Dust cup capacity: 0.9L
 Motor speed: 40000 r/min

**EL7-AXS527<AC>**

Product size (after assembly): 258x168x1070mm
 Packing method: inner foam+outer packing box
 Outer box size: 515x180x195mm (half bottom and half cover)
 Net weight of product: 1.6Kg
 Gross weight with outer box: 2.0Kg
 Operating radius: ≥ 5 meters
 Rated voltage: 220V~
 Plug standard: CCC national standard two plug
 Rated power: 600W
 Motor power: 400W
 Maximum vacuum degree: 14.0Kpa
 Filtering method: High efficiency HEPA
 Noise: ≤ 75dB
 Product Material: ABS/PP
 Dust cup capacity: 1.0L
 Motor speed: 32000r/min

EL1-P1006

Features:

- ▶ Mini light weight design
- ▶ Vehicle and household use
- ▶ With HEPA and stainless steel filter system
- ▶ With battery capacity indication
- ▶ Low and high power regulation
- ▶ Dust capacity: 0.5L
- ▶ Basic accessories: 2 in 1 brush, Charger
- ▶ Optional: Charging base, Plastic tubes, Aluminum tubes, Floor brush



Model	Power	Li-ion battery capacity	Vacuum kPa	Noise dB	Product size mm	Color box size mm	Carton size mm	Loading qty
EL1-P1006A	DC50W Brush motor	7.4V 2200mAh	≥ 5.5 kPa	≤ 72	428*ø60	Standard configuration: 452x145x120 High configuration: 452x145x132	Standard configuration: 750*467*265(10pcs/ctn) High configuration: 470*455*550(12pcs/ctn)	G.W./N.W.:11kgs/10.5kgs Standard configuration: 3100pcs/20'GP 6400pcs/40'GP 7400pcs/40'HQ High configuration: 2880pcs/20'GP 6120pcs/40'GP 6960pcs/40'HQ
EL1-P1006B	DC100W Brush motor	11.1V 2500mAh	≥ 3 kPa Low power ≥ 6.5 kPa High power	≤ 74				
EL1-P1006C	DC90W Brushless motor	11.1V 2500mAh	≥ 7 kPa Low power ≥ 14 kPa High power	≤ 72				

EL1-S2008<DC>



Features:

- ▶ Large-capacity double dust cup design
- ▶ Digital touch screen, easy for operation
- ▶ With 3 speed control function
- ▶ Multistage cyclone filtration system
- ▶ Low noise design, high suction power
- ▶ Removable dust cup, only one click to pour dust, easy to clean and replace
- ▶ Dust capacity: 0.6L

EL1-S2009<AC>



Features:

- ▶ Large-capacity double dust cup design
- ▶ High suction power, efficient clean feeling
- ▶ Multistage cyclone filtration system
- ▶ Low noise design, high suction power
- ▶ Removable dust cup, only one click to pour dust, easy to clean and replace
- ▶ Dust capacity: 0.6L

Model	Power(W)	Motor type	Voltage(V)	Vacuum(kPa)	Noise(dB)	Battery Specification	Product size mm	Color box size mm	Carton size mm	Loading qty
EL1-S2008A	150W	Brush motor	DC22.2	≥ 10kPa	≤ 75	Li-ion 22.2V 2000mAh	240X304X1188	Standard configuration: 300X135X895 High configuration: 300X175X895	Standard configuration: 710X320X425(3pcs/ctn) High configuration: 710X320X545(3pcs/ctn)	G.W./N.W.:10kgs/9.5KGS Standard configuration: 900pcs/20'GP 1860pcs/40'GP 2130pcs/40'HQ High configuration: 690pcs/20'GP 1530pcs/40'GP 1686pcs/40'HQ
	200W	Brushless motor	DC22.2	≥ 22kPa	≤ 73	Li-ion 22.2V 2000mAh				
EL1-S2008B	250W	Brushless motor	DC22.2	≥ 24kPa	≤ 75	Li-ion 25.9V, 2200mAh				
EL1-S2008C	350W	Brushless motor	DC22.2	≥ 30kPa	≤ 76	LI-ion 29.6V, 2500mAh				

Model	Power(W)	Motor type	Voltage(V)	Vacuum(kPa)	Noise(dB)	Product size mm	Color box size mm	Carton size mm	Loading qty
EL1-S2009	300-500W	Brush motor	100-240V	≥15	≤76	240X304X1188	111X317X649	348*332*677 (3 pcs/ctn)	G.W./N.W.:10kgs/9.5kgs 1071pcs/20' GP 2178pcs/40' GP 2205pcs/40' HQ

characteristic:
 13.8Kpa, strong suction can easily remove fine dust and large particles.
 Visualize the dust bin
 HEPA high-efficiency filter element
 Dual use handheld/push rod
 Multiple professional brush heads, including water tank
 mop material: ABS, PP
 Input voltage: 220V
 Working current: 1.86A
 Power: 410W
 Package: foam+color box+outer box

EL13-WS-29



EL13-WS-19



EL13-WS-21C



EL13-WS-19

Adjustable handle, height 100-124cm
 Can automatically spray mop
 Quiet - Noise level below 56db
 The top handle design conforms to the principles of human mechanics, and the adapter protects the battery from overcharging
 Materials: ABS, Iron Oxide
 Battery: Certified Adapter
 Package: 6 pieces of foam+color box+carton

EL13-WS-21C

Adjustable handle, height 100-124cm
 Can automatically spray mop
 Quiet - Noise level below 56db
 The top handle design conforms to human mechanics
 Ordinary adapters protect batteries from overcharging
 LED light material: ABS aluminum
 Battery: Lithium battery 2000mAh
 Adapter: European certified plug
 Packaging: Color box+outer box, pack of 6 pieces

EL3-JC303/305



Lightweight and agile design

Charging indicator light/working indicator light

Data cable charging, simple and convenient

Multiple accessories can clean multiple scenarios:

kitchen countertops, range hoods, tableware, cookware, leather sofas for cleaning and polishing, bathtub cleaning, sink cleaning, glass and mirror cleaning, etc

Charging/discharging time: 150 minutes

IPX7 waterproof.

400rpm/360rpm (high/low range).

2000mAh lithium battery.

EL13-WS-09



Equipped with an extension rod

3 replaceable brush heads

Brush speed 350 revolutions per minute

Lithium battery 7.4V 2000mAh

After charging for 4-6 hours, use for 60-90 minutes

After charging is complete, the indicator light changes from red to green

Low noise (62-69 decibels)

Power of 37W

Materials: ABS, Aluminum

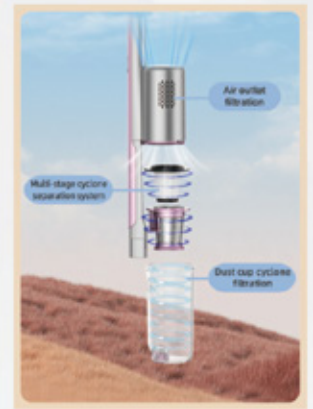
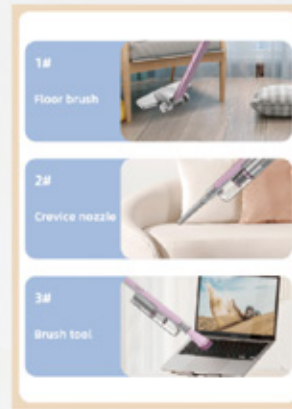
Plug: Certified plug

Including: 1 handle, 1 extension rod, 1 machine head, 1 dome brush head, 1 flat brush head, 1 pointed brush, 1 adapter, and 1 hook

EL1-S2006

Features:

- Stick and portable dual usage
- Mini lightweight design
- Multi-stage cyclone separation system
- Easy to clean HEPA filter
- Detachable and washable dust cup
- Detachable extension tube and floor brush
- Dust cup capacity: 0.5L
- Type-C charging cable, more convenient to use



Model	Power	Motor type	Voltage(V)	Vacuum (kpA)	Noise (dB)	Product size mm	Color box size mm	Carton size mm	Loading qty
EL1-S2006A	100W	Brush motor	DC11.1V	≥ 8	≤ 75	81X100X430	155*135*505	560*520*330 (8pcs/ctn)	G.W./N.W.:16.7KGS/16.2KGS 2400pcs/20'GP 4960pcs/40'GP 5760pcs/40'HQ
EL1-S2006B	120W	Brush motor	DC14.8V	≥ 10	≤ 76	81X100X430			
EL1-S2006C	100W	Brushless motor	DC14.8V	≥ 15	≤ 74	81X100X430			

SIX Advantages Safe & Stable

Good Cleaning Assistant For You

MULTI-FUNCTIONAL

2-SPEED CONTROL

USB-TYPE-C CHARGING

SUFFICIENT ENDURANCE

PUSH-ON BUTTON

WATER-PROOF

EL3-JC301&JC302

FLAT BRUSH, CONE BRUSH, SCOURER, SCOURING PAD, SPONGE



POWER	3.7V 10W	CHARGING	USB CHARGING
INPUT	5V ≡ 1A	CHARGING TIME	ABOUT 150 MINS
WATER PROOF	IPX7	ENDURANCE	ABOUT 150 MINS (NO-LOAD)
RATATING SPEED		330RPM (H)/ 300RPM (L)	

EL12-2206-32/36/38/42/45

Hand wash free flat mop



32cm , Material: PP, stainless steel, ultra-fine fiber, Product Size: Panel: 32 * 11 Rod: 121cm

36cm , Material: PP, stainless steel, ultra-fine fiber, Product Size: Panel: 36 * 11 Rod: 121cm



38cm , Material: PP, stainless steel, ultra-fine fiber, Product Size: Panel: 38 * 11 Rod: 122cm

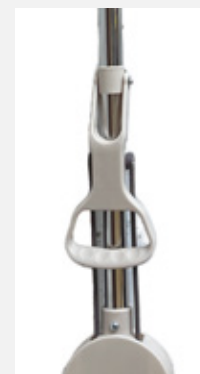
42cm , Material: PP, stainless steel, ultra-fine fiber, Product Size: Panel: 42 * 11 Rod: 122cm

45cm , Material: PP, stainless steel, ultra-fine fiber ,Product Size: Panel: 45 * 11 Rod: 140cm

Straight rod rubber cotton mop

EL12-2211 straight pole

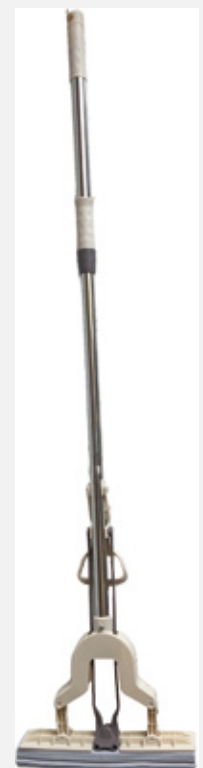
27cm , Material: PP, PVA, Stainless Steel, Product Size: 5.5x27x115cm



Expansion rod rubber cotton mop

EL12-2211 telescopic rod

27cm , Material: PP, PVA, Stainless Steel, Product Size: 5.5x27x120cm





Straight rod wiper

EL12-35/45/55

35cm , Material: PP PPE Stainless Steel
Aluminum Strip, Product Size: Scraper Strip
35cm, Rod 1m

45cm , Material: PP PPE Stainless Steel
Aluminum Strip, Product Size: Scraper Strip
45cm ,Rod 1m

55cm , Material: PP PPE Stainless Steel
Aluminum Strip, Product Size: Scraper Strip
55cm, Rod 1m



Water spray window cleaner EL12-30/35

30cm , Material: PP, ABS, PE, TPR spray
coated iron rod, ultra-fine fiber, Product Size:
Panel 29cm * 6.5cm Rod: 137cm

35cm , Material: PP, ABS, PE, TPR spray
coated iron rod, ultra-fine fiber ,Product Size:
Panel 35cm * 7cm Rod: 137cm



Spray mop

EL12-35 water spray mop

35cm , Material: PP, ABS, PE stainless steel,
ultra-fine fiber ,Product Size: Panel 35cm *
11.5cm, Rod: 112cm

Spray mop

EL12-40 water spray mop

40cm , Product size: 13.5x40x130cm Material:
PP, ABS, spray coated iron rod, ultra-fine fiber,
Product size: 40cm * 13cm ,Rod: 122cm





Spray mop

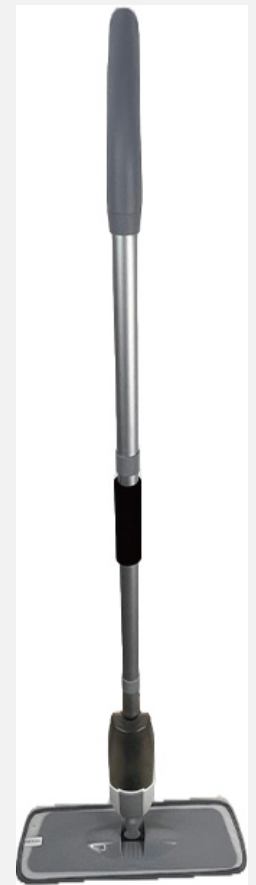
EL14-01-C

Product Material: Plastic (PP, ABS), Aluminum, Fiber, Sponge, Black sponge sheath
 Kettle capacity: 360mL
 Mop size: 35 * 9.5 * 120cm
 Kraft paper inner box: 9 * 11 * 42cm
 Outer box: 59 * 41 * 44cm
 Number of boxes: 20 sets/box
 Single set gross/net weight: 0.6kg/0.5kg
 Full box gross/net weight: 13.5/12kg

Spray mop

EL14-01-CA

Product Material: Plastic (PP, ABS), Aluminum, Fiber, Sponge, Black Sponge Sheath
 Kettle capacity: 300mL
 Mop size: 35 * 9.5 * 120cm
 Kraft paper inner box: 11 * 9 * 42cm
 Outer box: 59 * 41 * 44cm
 Number of boxes: 20 sets/box
 Single set gross/net weight: 0.6kg/0.5kg
 Full box gross/net weight: 13.5/12kg



Spray mop

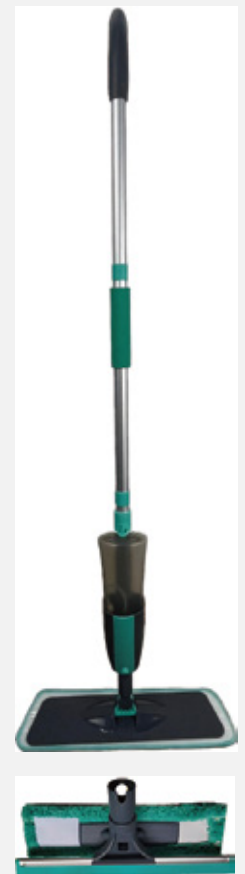
EL14-01-WB

Product Material: Plastic (PP, ABS), Aluminum, Fiber
 Kettle capacity: 410mL
 Window brush size: 27 * 7 * 120cm
 Kraft paper inner box: 9 * 11 * 42cm
 Outer box: 59 * 41 * 44cm
 Number of boxes: 20 sets/box
 Single set gross/net weight: 0.6kg/0.5kg
 Full box gross/net weight: 13.5/12kg

Spray mop

EL14-01-C 2 in 1

Product Material: Plastic (PP, ABS), Aluminum, Fiber, Sponge
 Kettle capacity: 410mL
 With lake blue sponge sheath with window brush accessories
 Mop size: 35 * 9.5 * 120cm
 Window brush size: 27 * 7 * 120cm
 Kraft paper inner box: 14.5 * 11.5 * 42cm
 Outer box: 60 * 49 * 44cm
 Number of boxes: 16 sets/box
 Single set gross/net weight: 0.8kg/0.7kg
 Full box gross/net weight: 14Kg/13kg





Spray mop

EL14-02-C

Product Material: Plastic (PP, ABS),
Aluminum, Fiber
Kettle capacity: 560mL
Mop size: 38 * 11 * 130cm
Kraft paper inner box: 14 * 13 * 44cm
Outer box: 59 * 42 * 48cm
Number of boxes: 12 sets/box
Single set gross/net weight: 0.9kg/0.7kg
Full box gross/net weight: 13.4/10.8k



Spray mop

EL14-03-C

Product Material: Plastic (PP, ABS),
Aluminum, Fiber, Sponge
Purple sponge sheath
Kettle capacity: 500mL
Mop size: 35 * 9.5 * 120cm
Kraft paper inner box: 9 * 11 * 42cm
Outer box: 59 * 41 * 44cm
Number of boxes: 20 sets/box
Single set gross/net weight: 0.6kg/0.5kg
Full box gross/net weight: 13.2/12kg



Spray mop

EL14-03-CA

Product Material: Plastic (PP, ABS),
Aluminum, Fiber, Sponge
Kettle capacity: 500mL
With blue sponge sheath
Mop size: 35 * 9.5 * 120cm
Kraft paper inner box: 9 * 11 * 42cm
Outer box: 59 * 41 * 44cm
Number of boxes: 20 sets/box
Single set gross/net weight: 0.6kg/0.5kg
Full box gross/net weight: 13.2/12kg



Spray mop

EL5-DS1249

Straight iron pole Φ22mm with frame
total 120cm
1pc microfiber refill 38-43x14.5cm
Velcro sticker frame 35-38.5x11.5cm
Water bottle 350 ml, can be remove-
able
All surface floor cleaner, clean twice
faster than a bucket and mop
Makes cleaning floors easy, simple and
saves time



**Easy flat mop with squeeze bucket
EL5-DS346-1**

1. Mop bucket size 36*23*19cm with separate washing and drying part.
2. With 3 sections stainless steel pole total 110cm, with frame total 120cm, handle with long Eva grip for comfortable hold.
3. Unique design of bendable frame 31x10.5cm, easy to clean the floor with wall corner.
4. With 1pc microfiber refill, size:32*10.5cm

**New design Smart Quick Click
EL5-DS1404B-1**

Quick window wiper double use 25.5cm, microfiber side for washing, rubber seal side for remove water.
With flexi neck can be bendable easy to attach glass surface.
3 sections stainless steel pole with big soft EVA sponge for comfortable hold



**New design Smart Quick Click 7pcs Cleaning Kits
EL5-DS1400**

Quick smart broom 26.2x4cm
Quick smart mop 27x10.5cm
Quick window wiper double use 25.5*24cm
Quick scrub sponge 11.6x9cm
Quick scrub brush 11.6x6.8cm
Quick microfiber duster 56cm
Quick universal handle 120cm
3 sections stainless steel pole with big soft eva grip, can attach different mop heads for long high place use.





Microfiber flat mop

EL5-DS1205

Three section S/S pole 120cm
 1pc microfiber refill 38-43x14.5cm
 Velcro sticker frame 35-38.5x11.5cm
 Safe on all surface vinyl, ceramic tiles,
 finished wood, laminate and marble floors



Toilet brush set

EL5-DS964

Suction through
 with sticker on the backside
 Size:10.7*10.7*42cm
 Material:PP,TPR



**3-section painted iron pole with spray bottle,
 Quick window wiper, bathroom**
EL5-DS1230

total length 150 cm
 Material: PP + Painted Iron +
 ABS
 Pole diameter: 25 mm
 Weight: 790 g
 Bottle capacity: 300 ml
 Filling material: Sponge
 Squeegee size: 23cm
 Sponge size:23 cm

position mop broom holder

EL5-DS1821

Self-Adhesive no drilling
 Size:7.1x5.5x8.4cm
 Weight:38g
 Material: ABS+TPR
 Super anti-slip utility hooks
 for home, bathroom, kitchen,
 garden, garage

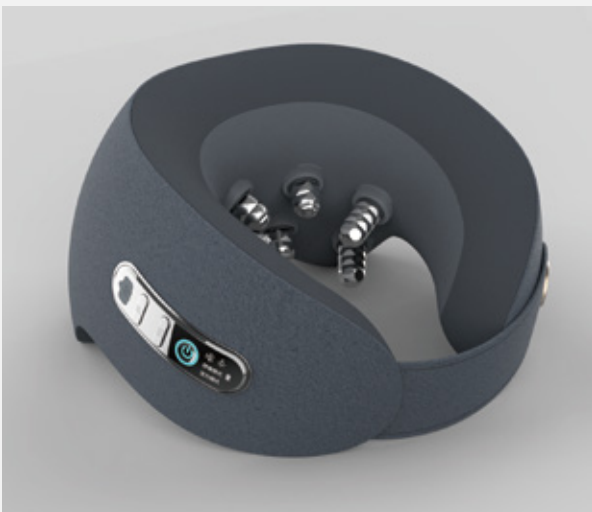


U-shaped massage pillow



EL15-U18

Outer cloth cover: technology cloth fabric Product size 235*235*132 (mm)
 Pillow core material: slow rebound memory foam Net weight / gross weight 650g/1030g
 Colour: Vibrant Orange, Green Mountain Dai Charging time Approx. 4 hours
 Battery capacity: 2000 mAh, DC3.7V rated voltage
 Rated power: DC5V 7W
 Massage head configuration: 4 groups of 3D massage head, with 5 small and 1 large kneading beads, 24 massage contacts
 Packaging configuration Colour box packaging + express yellow box



EL15-U20

Outer cloth cover: suede fabric Product size 235*235*132 (mm)
 Pillow core material: slow rebound memory foam Net weight / gross weight 700g/1080g
 Colour: Vibrant Orange, Green Mountain Dai Charging time Approx. 4 hours
 Battery capacity: 2000 mAh, DC3.7V rated voltage
 Rated power: DC5V 7W
 Massage head configuration: 4 groups of 3D massage head, with 5 small and 1 big kneading beads, 24 massage contacts
 Packaging configuration Colour box packaging + express yellow box



EL15-U69

Outer fabric cover: knitted mesh fabric Product size 250*225*130 (mm)
 Pillow core material: slow rebound memory foam Net/Gross weight 635g/1010g
 Colour: Vibrant Orange, Green Mountain Dai Charging time: about 4 hours.
 Battery capacity: 2000 mAh, DC3.7V rated voltage
 Rated power: DC5V 7W
 Massage head configuration: 3D kneading clip massage head, oblique muscle massage contact Packaging configuration colour box packaging + express yellow box

Lumbar Massage Cushion

EL15-K11



Material: high resilience sponge fabric cover nylon, spandex
 Colour : Black and blue/creamy yellow/pink
 Product size 395*230*115 (mm)
 Battery capacity: 2000mAh /7.4V
 Rated voltage DC5V
 Rated power: 10W
 Colour box size 390*230*120 (mm)
 Net/Gross weight: 1300g/1600g
 Mail order box size 400*238*128 (mm)

EL15-YK01



Outer cloth cover: suede Product size 400*385*180 (mm)
 Pillow core material: slow rebound memory foam
 Net weight / gross weight 1670g/2780g
 Colour: avocado, elephant grey
 Rated voltage DC 12V
 Massage head configuration: 2 groups of 3D massage head, with 2 large 8 small kneading beads, 20 massage contacts
 Rated power 24W
 Adapter specifications Input: AC-100-240V 50/60HZ
 Output: DC 12V 1A
 Battery Capacity
 2000mAh/ 11.1V

EL15-K2



Outer cloth cover: suede Product size 405*385*142 (mm)
 Pillow core material: slow rebound memory foam
 Net/Gross weight 1700g/2460g
 Colour: avocado, elephant grey
 Rated voltage DC 12V
 Massage head configuration: 2 sets of 3D massage head, with 2 big 8 small kneading beads, 20 massage contacts
 Rated power: 24W
 Adapter specifications Input: AC-100-240V 50/60HZ
 Output: DC 12V 1A
 Battery Capacity
 2000mAh /11.1V

EL2-H1601C-4

- Capacity:1.7L
- 360° rotary base,easy to use
- With high borosilicate glass body, durable and stain resistant
- Boiling dry protection
- Automatically turns off when water boils
- With blue LED illumination
- Power:220-240V,50/60Hz,1850-2200W
- Package Size:22X17.3X22.8cm
- Carton Size:45.5X36.5X47.2cm.
- Qty per carton: 8pcs/ctn.
- G.W./N.W.: 11.7/10.8kg
- 20'FT: 2920PCS
- 40'FT: 5800PCS
- 40'HQ: 6880PCS



EL2-H2302S

- Capacity:1.7L
- Boil-dry protection
- detachable lid
- on/off switch
- Power:220-240V,50/60Hz,1850-2200W
- Package Size: 20.5X17,3.X23.5cm.
- Carton Size: 54.5X22X49cm.
- Qty per carton: 6pcs/ctn.
- G.W./N.W.: 7.25/6.48kg
- 20'FT:2952PCS
- 40'FT: 6084PCS
- 40'HQ: 6816PCS



EL2-H1801C

- Capacity:1.8L
- With switch control panel and LED display on the handle
- Electronic control with the function of boiling,keep warm and 40℃,50℃,60℃,70℃,80℃,90℃,100℃ 7 levels temperature setting for different need
- With color changing LED illumination
- Power:220-240V,50/60Hz,1850-2200W
- Package Size:21X21X26.8cm
- Carton Size:43.5X43.5X55.5cm.
- Qty per carton: 8pcs/ctn.
- G.W./N.W.: 12/11kg
- 20'FT:2216PCS
- 40'FT: 4560PCS
- 40'HQ: 5312PCS



EL2-H1008

- Capacity:1.8L
- Electronic control with the function of boiling,keep warm and 40℃,50℃,60℃,70℃,80℃,90℃,100℃ 7 levels temperature setting for different need
- With color changing LED illumination
- Power:220-240V,50/60Hz,1850-2200W
- Package Size:20.5x20.5x28.5cm
- Carton Size:42.5x42.5x58.5cm.
- Qty per carton: 8pcs/ctn.
- G.W./N.W.: 14/13kg
- 20'FT:2144PCS
- 40'FT: 4400PCS
- 40'HQ: 5120PCS



EL2-2302D

- Capacity:1.7L
- With electronic control panel and LED display on the handle
- Electronic control with the function of boiling,keep warm and 40℃,50℃,60℃,70℃,80℃,90℃,100℃ 7 levels temperature setting for different need
- With color changing LED illumination
- Power:220-240V,50/60Hz,1850-2200W
- Package Size:20.5X17.3X23.5cm
- Carton Size:54.5X22X49cm.
- Qty per carton: 6pcs/ctn.
- G.W./N.W.: 7.25/6.48kg
- 20'FT:2952PCS
- 40'FT: 6084PCS
- 40'HQ: 6816PCS



EL2-H1601C

- Capacity:1.7L
- With electronic control panel and LED display on the handle
- Electronic control with the function of boiling,keep warm and 40℃,50℃,60℃,70℃,80℃,90℃,100℃ 7 levels temperature setting for different need
- With color changing LED illumination
- Power:220-240V,50/60Hz,1850-2200W
- Package Size:23.3X18.3X28.3cm
- Carton Size:48.3X38.1X58.2cm.
- Qty per carton: 8pcs/ctn.
- G.W./N.W.: 13/12kg
- 20'FT:2160PCS
- 40'FT: 4384PCS
- 40'HQ: 5200PCS



EL2-H1601C-1

- Capacity:1.7L
- With switch control panel and LED display on the handle
- Electronic control with the function of boiling,keep warm and 40 C,50 C,60 C,70 C,80 C,90 C,100 C 7 levels temperature setting for different need
- With color changing LED illumination
- Power:220-240V,50/60Hz,1850-2200W
- Package Size:23.3X18.3X28.5cm
- Carton Size:48.3X38.1X58.6cm.
- Qty per carton: 8pcs/ctn.
- G.W./N.W.: 13/12kg
- 20'FT:2160PCS
- 40'FT: 4384PCS
- 40'HQ: 5200PCS



EL2-G1008

- Capacity:1.8L
- With touch control panel and LED display on the base
- Electronic control with the function of boiling,keep warm and 20-100 C,temperature setting for different need
- With blue LED illumination
- Power:220-240V,50/60Hz,1850-2200W
- Package Size: 25.5X21.5.X30.5cm.
- Carton Size: 66.5X27X63cm.
- Qty per carton: 6pcs/ctn.
- G.W./N.W.: 12/13kg
- 20'FT:1500PCS
- 40'FT: 3068PCS
- 40'HQ: 3600PCS



EL2-G1601B

- Capacity:1.7L
- With touch control panel and LED display on the base
- Electronic control with the function of boiling,keep warm and 20-100 C,temperature setting for different need
- With blue LED illumination
- Power:220-240V,50/60Hz,1850-2200W
- Package Size: 25.5X21.5.X28cm.
- Carton Size: 53X44.5X58cm.
- Qty per carton: 8pcs/ctn.
- G.W./N.W.: 15/14kg
- 20'FT:1696PCS
- 40'FT: 3632PCS



EL2-H1601G2/3

Capacity:1.7L+1.0L
 With electronic control panel and LED display on the handle
 Electronic control with the function of boiling,keepwarm and 40 C,50 C,60 C,70 C,80 C,90 C,100 C 7 levelstemperature setting for different need
 With blue LED illumination
 Tea pot
 Power:220-240V,50/60Hz,1850-2200W
 Package Size: 22X17.3.X36.5cm.
 Carton Size: 54.5X45.5X38.5cm.
 Qty per carton: 6pcs/ctn.
 G.W./N.W.: 12.8/11.4kg
 20'FT:1854PCS
 40'FT: 3834PCS
 40'HQ: 4314PCS

