


The logo for SOBO & Co Jewellery is contained within a circular area filled with fine, parallel diagonal lines. The text 'SOBO' is in a large, bold, black serif font, followed by '& Co' in a smaller, black serif font. Below this, the word 'Jewellery' is written in a black, lowercase, sans-serif font.

SOBO & Co
Jewellery

Handmade in UK

OFFICIAL LAUNCH
JAN 21

A close-up portrait of a woman with long, dark hair, wearing a brown turtleneck top. She is wearing several pieces of jewelry: a gold bangle on her right wrist, large gold rectangular earrings, and a gold chain necklace with a rectangular pendant. Her hand is resting on her head.

info@sobojewellery.co.uk
www.sobojewellery.co.uk
Tel 07886 351826

AMARA COLLECTION



AMARA COLLECTION

ER0001



ER0004

BR0003



BR0007



NK0001

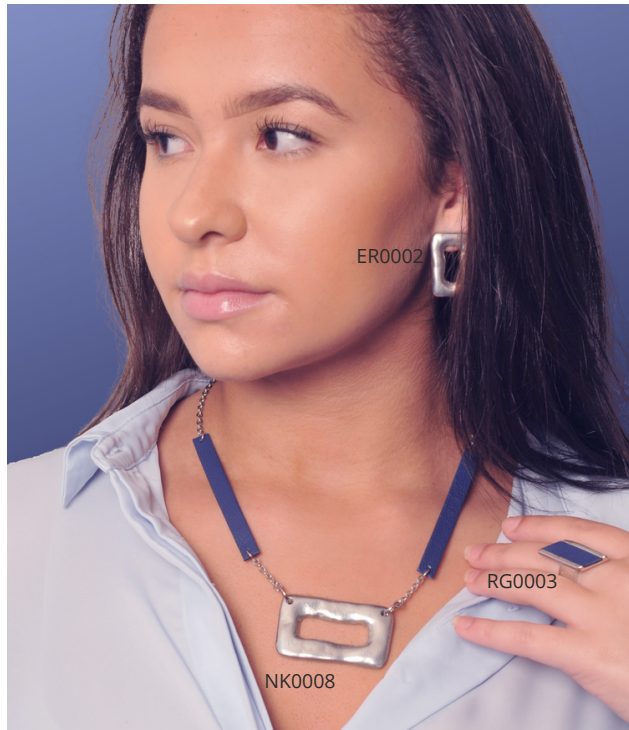


NK0010



ER0005

NK0009



ER0002

RG0003

NK0008

AMARA COLLECTION



ER0007

RG0002

NK0010

ER0005



ER0006



BR0003

BR0007



NK0003



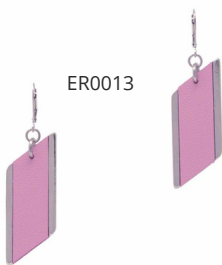
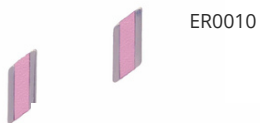
NK0007



NK0012



CONSTANTINA COLLECTION



CONSTANTINA COLLECTION



SOPHIA COLLECTION



ER0018



RG0005



ER0020



ER0012

NK0024



NK0025



NK0022



BR0012



NK0020



BR0013



SOPHIA COLLECTION



BR0011

BR0010



NK0023



ER0018



BR0013



BR0010



COLOUR SELECTION



BR0011

Black leather



Blue leather



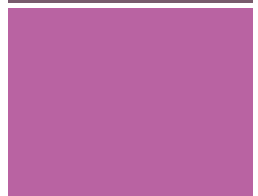
Tan leather



Burgundy leather



Grape leather



Pink leather



Yellow leather



OXFORDSHIRE STUDIO



We hand pour, drill and polish all of our own pewter components using only the finest British lead free pewter. We even make our own silicone moulds in our dedicated workshop in our Wantage studio

Please drop us a request if you would like a sample

We use either Italian cowhide or New Zealand lambs leather in all of our creations.

We cut all of the leather components by hand in our dedicated craft room in our Wantage studio

Please drop us a request if you would like some leather samples for colour selection



HOW TO ORDER & THE BITS YOU WANT TO KNOW

You can order on our website, you'll need to register for access before you can view prices or place an order. You can also order by email or telephone using the price list included with this booklet.

Minimum order is £200 (please do get in touch if you'd like to try a smaller order and we will do our best to accommodate).

UK delivery is charged at £10.

UK delivery is free when you spend £350 or over.

We aim to dispatch between 3-10 days but we will always let you know of any delays or work with you to accommodate any deadlines you may have.



Hi .. We are the small family business behind Sobo & Co Jewellery, based in Wantage, Oxfordshire. When our chaotic jewellery studio is empty you can usually find us enjoying the outdoors with our tribe

Sophia, Bodhi & Conor...AKA Sobo & Co

- Lisa & Tommy

WWW.SOBOJEWELLERY.CO.UK

The logo for SOBO & Co Jewellery is centered within a large circle. The circle is filled with a pattern of thin, parallel, light grey lines that radiate from the center, creating a textured, sunburst-like effect. The text 'SOBO' is written in a large, bold, black serif font. To the right of 'SOBO', the text '& Co' is written in a smaller, black, sans-serif font.

SOBO & Co

Jewellery

Handmade in UK

A large, solid orange shape that curves from the bottom left towards the bottom right, partially overlapping the contact information.

info@sobojewellery.co.uk

www.sobojewellery.co.uk