



The world of fine craftsmanship

The Noble Collection®



GAME OF THRONES

THE LORD OF THE RINGS
THE MOTION PICTURE TRILOGY

STAR TREK™

JUMANJI™



UNIVERSAL MONSTERS

Harry Potter™



The Noble Collection
 Creators of Finely Crafted Treasures

- JURASSIC PARK**
PAGES 2-3
- Harry Potter**
PAGES 4-27
- FANTASTIC BEASTS**
PAGES 28-31
- THE LORD OF THE RINGS**
PAGES 32-35
- THE HOBBIT**
PAGES 36-37
- OUTLANDER**
THE SERIES
PAGE 38
- MONSTERS**
PAGE 39
- SUICIDE SQUAD**
PAGE 40
- THE DARK KNIGHT RISES**
PAGE 41
- DC**
PAGES 42-45
- JUMANJI**
PAGES 46-47
- GAME OF THRONES**
PAGES 48-49
- STAR TREK**
PAGES 50-51



Back of Board



JURASSIC PARK™ CHESS SET
 Intricately detailed chess set, that includes 32 finely sculpted pieces and full graphic chess board.
 NN2421



UNIVERSAL
 © Universal City Studios LLC and Amblin Entertainment, Inc. All Rights Reserved.

BendyFigs

HARRY POTTER™ BENDYFIGS™



A Toylectible™ line of figures with highly-detailed sculpts in a bendable form factor to pose and display. Harry Potter™, Hermione Granger™, and Albus Dumbledore™ feature fabric cloaks and include their wands. Each figure includes a removable display stand and measures approximately 7 inches tall.

- A NN7367 HERMIONE GRANGER™
- B NN7368 ALBUS DUMBLEDORE™
- C NN7369 DOBBY™
- D NN7366 HARRY POTTER™



Harry Potter

Forbidden



DOBBY™ ELECTRONIC INTERACTIVE PLUSH

Bring home your very own Dobby™, the House-Elf. Squeeze his tummy to hear 10 unique phrases, place Harry's sock in his hand to unlock more! 16 phrases in all! Requires 2 AAA batteries (not included). Measures approximately 12 inches tall.

NN7205



E KREACHER™ COLLECTOR PLUSH

Finely crafted plush, made of high-quality materials. Measures approximately 14 inches tall. NN8926

F FAWKES™ THE PHOENIX COLLECTOR PLUSH

Beautifully crafted plush replica from the Harry Potter™ franchise. Measures 15 inches in height. NN8873

G HEDWIG™ COLLECTOR PLUSH

Beautifully crafted plush replica. Measures 14 inches in height. NN8871

H THE MONSTER BOOK OF MONSTERS™ COLLECTOR PLUSH

Beautifully crafted plush replica. Measures 14 inches in height. NN7972

WIZARDING WORLD characters, names and related indicia are © & ™ Warner Bros. Entertainment Inc. WB SHIELD: © & ™ WBEI. Publishing Rights © JKR. (s21)



The Noble Collection®
Creators of Finely Crafted Treasures

**HOGWARTS™
HOUSE MASCOT PLUSH**

Plush pillow made of rich, soft materials featuring a detailed embroidered House Crest. Plush Mascot can be stored inside pillow or displayed outside. Pillows measure approximately 13 inches, Mascots measure 8 inches.

- NN7042 GRYFFINDOR™
- NN7043 SLYTHERIN™
- NN7045 HUFFLEPUFF™
- NN7044 RAVENCLAW™



**DOBBY™
COLLECTOR PLUSH**

Plush replica featuring detailed, high-quality materials. Can pose to sit or stand. Measures approximately 16.5 inches tall.

NN7216



The Noble Collection®
Creators of Finely Crafted Treasures



**SCABBERS™
COLLECTOR PLUSH**

Beautifully crafted plush replica from the Harry Potter™ franchise. Tail attaches to hands with velcro. Approximately 11 inches in height.

NN7977



**CROOKSHANKS™
COLLECTOR PLUSH**

Beautifully crafted plush replica. Measures approximately 17 inches in length.

NN7974



A



E



Harry Potter

**A CHOCOLATE FROG
COLLECTOR PLUSH**

Beautifully crafted plush replica featuring rich, soft materials. Chocolate Frog plush can be stored inside pillow or displayed outside. Pillow measures approximately 13 inches, Chocolate Frog measures 8 inches.

NN8922

**B CORNISH PIXIE
COLLECTOR PLUSH**

Plush replica featuring detailed, high-quality materials. Arms and legs are poseable. Measures approximately 13 inches tall.

NN8928



B

**C BUCKBEAK™
COLLECTOR PLUSH**

Measures 13 inches in height.

NN8877



C

D PYGMY PUFF PLUSH

Finely crafted plush, made of high-quality materials. Measures approximately 5 inches tall.

- NN8932 PINK
- NN8933 PURPLE



D

**E MANDRAKE
COLLECTOR PLUSH**

Beautifully crafted plush replica. Made of high-quality materials. Measures approximately 17 inches tall.

NN8670

**F FLUFFY
COLLECTOR PLUSH**

Measures 7 inches in height.

NN7976



F



WIZARDING WORLD characters, names and related indicia are © & ™ Warner Bros. Entertainment Inc. WB SHIELD: © & ™ WBEL Publishing Rights © JKR. (c21)

QUALITY WEASLEY GOODS



PUKING PASTILLES BOOKEND

9.75 inches in height.
NN7159



BUBBLE BOY BOOKEND

9.75 inches in height.
NN7157



MANDRAKE COLLECTOR INTERACTIVE PLUSH

Finely crafted interactive plush. Remove from pot to hear the Mandrake cry and shake, place back into pot to quiet down. Measures approximately 12 inches tall. Requires 2 AAA batteries (not included).

NN7506



HOGWARTS™ BOOKMARKS

Set includes 4 metal bookmarks in wood box.
NN7039



D

A



Harry Potter

A DUMBLEDORE'S ARMY™ WAND COLLECTION

Includes 6 wands and display.
NN7728



B

B HOGWARTS™

An amazingly detailed and accurate hand-painted sculpture of Hogwarts. 13 inches in height.
NN7074

C THE HORCRUX BOOKMARK COLLECTION

Set includes 7 bookmarks.
NN8773

D HOUSE MASCOT ORNAMENTS

Set of 4 House Mascot metal ornaments with fabric ribbon. Ornaments measure approx. 4.25 inches tall.
NN7509



C



The Noble Collection®
Creators of Finely Crafted Treasures

WIZARDING WORLD
WIZARDING WORLD characters, names and related indicia are © &™ Warner Bros. Entertainment Inc. WB SHIELD: © &™ WBEI. Publishing Rights © JKR. (s21)



**DOLORES UMBRIDGE™
WAND AND WALL DISPLAY**

Wood display
measures 13 x 4.75 inches.
NN7607

**LOVE POTION
PENDANT
AND DISPLAY**

Love Potion heart
bottle made of
glass. Includes
18" chain and
collector display.
NN7599



HOGWARTS™ TREE ORNAMENTS

Die cast and richly plated, the set of 5 ornaments come complete with a collector box. Ornaments measure approximately 4 inches.
NN7333



**HERMIONE GRANGER™
RED CRYSTAL NECKLACE**

Set with crystals, faceted glass
and fresh water pearls. Necklace
measures approximately 18 inches.
NN1236 GOLD PLATED
NN7900 GOLD PLATED STERLING SILVER



**HOGWARTS™
EXPRESS SIGN**

Wood display.
Measures 22 x 8 inches.
NN7041



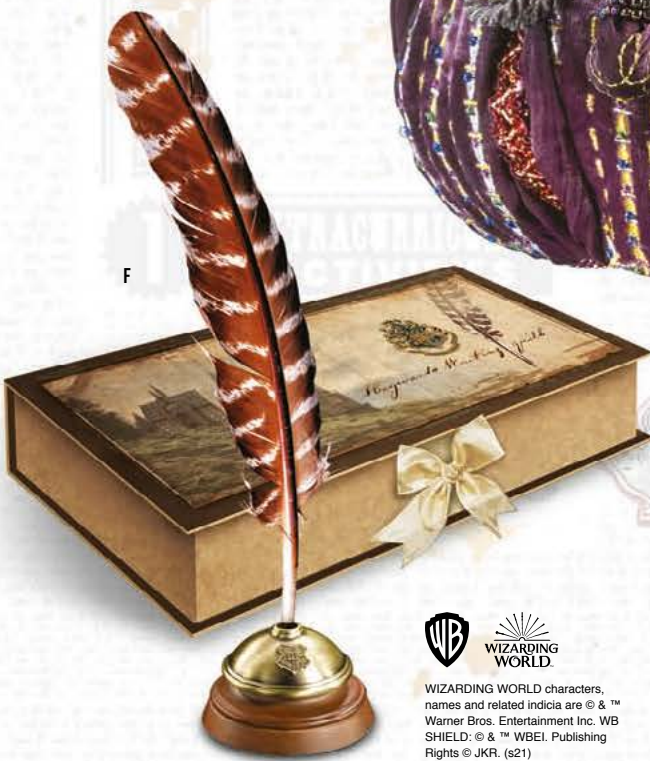
**HOGWARTS™
EXPRESS BOOKENDS**

Hand painted. Set includes 2 bookends.
Each measures approximately 7.5 x 5.5 inches high.
NN7362



**FELIX FELICIS
PENDANT AND DISPLAY**

Crafted in glass and metal
adornments. Includes 18 inch
chain and collector display.
NN8599



A GOLDEN EGG PENDANT

Gold plated, set with
crystal cabochons.
NN7611

B THE TIME-TURNER™

An authentic recreation of
Hermione's Time-Turner.
Measures 1 3/8 inches in
diameter and comes
complete with display.
Plated in 24 karat gold.
NN7017

**C HERMIONE GRANGER™
YULE BALL EARRINGS**

Set with pink crystals.
NN8900 SILVER PLATED
NN7689 STERLING SILVER

**D TIME-TURNER™
EARRINGS**

Features a miniature gold
plated Golden Egg with
petals that bloom open.
Comes complete with
chain and wood display
box.
NN7533

**E HERMIONE GRANGER™
BAG PROP REPLICA**

Finely crafted prop
replica. Made of
high-quality materials.
Measures approximately
9 inches tall.
NN7450

**F HOGWARTS™
WRITING QUILL**

Complete with
collector box.
NN7595

G DOBBY™ BOOKEND

Hand painted. Measures
5 x 7.5 inches high.
NN7579

Harry Potter

Harry Potter



THE OLLIVANDERS™ WAND BOX COLLECTION

Authentic recreations. Wands measure approximately 15 inches in length. All wands come with collector Ollivanders box.

- A NN7005 HARRY POTTER™ WAND
- B NN7145 ALBUS DUMBLEDORE™ WAND
- C NN7021 HERMIONE GRANGER™ WAND
- D NN7150 SEVERUS SNAPE™ WAND
- E NN7331 VOLDEMORT™ WAND
- F NN7081 SIRIUS BLACK™ WAND
- G NN7256 DRACO MALFOY™ WAND
- H NN7462 RON WEASLEY™ WAND



SORCERER'S STONE™ PENDANT

Cut glass and gold plated chain. NN7570



SORCERER'S STONE™

Authentic prop replica. Measures 6 inches in height. NN7386



HOGWARTS™ HOUSE WAND STANDS

Made of die cast metal. Measures 8 inches in length. Wand not included.

- I NN9520 HOGWARTS™ WAND STAND
- J NN9522 GRYFFINDOR™ WAND STAND
- K NN9524 SLYTHERIN™ WAND STAND
- L NN9526 HUFFLEPUFF™ WAND STAND
- M NN9528 RAVENCLAW™ WAND STAND

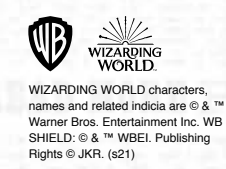
HOGWARTS™ SCHOOL AND HOUSE CREST WALL ART

Intricately detailed and hand-painted. House crests measure 8 x 11 inches. Hogwarts school crest measures 11 x 12 inches.

- N NN7746 HUFFLEPUFF™ HOUSE CREST
- O NN7744 SLYTHERIN™ HOUSE CREST
- P NN7742 GRYFFINDOR™ HOUSE CREST
- Q NN7748 RAVENCLAW™ HOUSE CREST
- R NN7746 HOGWARTS™ SCHOOL CREST



The Noble Collection®
Creators of Finely Crafted Treasures



WIZARDING WORLD characters, names and related indicia are © & ™ Warner Bros. Entertainment Inc. WB SHIELD, © & ™ WB. Publishing Rights © JKR. (s21)

Harry Potter



MARAUDER'S MAP™ WAND COLLECTION

Set includes a richly detailed Marauder's Map™ display, plus authentic replica wands of the map's creators: Remus Lupin™, Peter Pettigrew™, Sirius Black™, and James Potter™. Display measures 15.5 inches tall and 8.25 inches wide. Wands measure approximately 15 inches in length.
NN7905

WIZARD'S CHESS SET

Officially authorized by Warner Brothers. Manufactured by The Noble Collection. Set includes chess pieces and playing board. Chess pieces measure 2 to 4 inches. Playing board is 18.5 x 18.5 inches.
NN7580



The Noble Collection®
Creators of Finely Crafted Treasures



WIZARD CHESS KNIGHT BOOKENDS

Detailed sculpt of the Wizard Chess Knight piece. Made of quality materials and hand painted. Measures approximately 9.5 inches tall. Collect both the Black and White Knight. Sold separately.

NN8722 WIZARD CHESS KNIGHT BOOKEND- BLACK
NN8723 WIZARD CHESS KNIGHT BOOKEND- WHITE



HEDWIG™

Hand-painted sculpture. Measures 9.5 inches in height.
NN7876



THE GODRIC GRYFFINDOR™ SWORD

The intricately detailed handle is set with crystal cabochons. Sword measures 34 inches in length and comes permanently affixed to a beautiful wood display plaque.
NN7198



A



B

HARRY POTTER™ REMOTE CONTROL WAND

Magically control any IR device with a flick of the wrist. Complete with collector box and instructions.
NN8050

MARAUDER'S MAP™

Map dimensions 15.5 X 72 inches open.
NN7888 MAP
NN7882 DISPLAY CASE (not shown)

PROFESSOR SLUGHORN'S HOURGLASS

Authentic prop replica. Measures 10 inches tall.
NN7389



THE FINAL CHALLENGE CHESS SET COLLECTOR EDITION

A remarkable recreation. The 32 chess pieces are made to exact detail and measure from 2.5 to 5.5 inches in height. Playing board measures 20 X 20 inches.
NN7979



C

WB WIZARDING WORLD
WIZARDING WORLD characters, names and related indicia are © & ™ Warner Bros. Entertainment Inc. WB SHIELD: © & ™ WBEI, Publishing Rights © JKR. (s21)

DARK WIZARD WAND COLLECTION

Set includes a finely detailed Dark Mark wall display and authentic replica wands of Lord Voldemort™ and four Death Eaters™. Display measures 17 inches tall and 6.5 inches wide. Wands measure approximately 14 inches in length.

NN7351

THE DEMENTORS™ CRYSTAL BALL

Crafted in pewter and wood with a crystal clear glass ball.

NN7062



Harry Potter

A BELLATRIX LESTRANGE WAND

Complete with display. NN7976

B MARVOLO GAUNT'S RING

The Horcrux ring is an authentic prop replica plated in 24K gold. Display box included.

NN8177 (size 10 only)

C ROWENA RAVENCLAW'S DIADEM

Authentic prop replica. Measures approx 2 x 5.5 inches in diameter. Comes with collector box.

NN7247

D BELLATRIX LESTRANGE DAGGER

Authentic prop replica crafted in die cast metal. Measures 7.5 inches and comes with collector wood box. A collectible piece, not intended as a toy.

Age 15+ NN7555

E THE FIREBOLT FULL SIZE PROP REPLICA

Authentic full size replica. Measures 58 inches.

NN7536

F BENDABLE CORNISH PIXIE

Intricately detailed Cornish Pixie figure that is bendable and poseable. Measures approximately 7 inches tall.

NN9017



LUCIUS MALFOY WALKING STICK

Wand hidden inside of cane. 46 inches.

NN7639



HELGA HUFFLEPUFF'S CUP

5 inches in height. Cannot be used as drinkware.

NN8689



THE GRINGOTTS™ COIN COLLECTION

A set of Gringotts bank coins are beautifully recreated and set in a collector's coin box.

NN7234

THE LOCKET FROM THE CAVE

The Horcrux locket is an authentic prop replica. Collector display box included.

NN8133



SALAZAR SLYTHERIN'S LOCKET

The Horcrux locket is an authentic prop replica. Collector display box included.

NN7968



WIZARDING WORLD characters, names and related indicia are © & ™ Warner Bros. Entertainment Inc. WB SHIELD: © & ™ WBEI. Publishing Rights © JKR. (s21)

The Noble Collection®
Creators of Finely Crafted Treasures

**HOGWARTS™
HOUSE PINS**

Hand enameled. Includes set of 5 pins and collector box. NN7374



Harry Potter

A DELUMINATOR

An authentic prop replica of Dumbledore's Deluminator. Lights up and measures 4 inches long. NN7268



HOGWARTS™ EXPRESS DIE CAST TRAIN

Intricately detailed die cast model 1:50 scale. Measures 21 inches in length. Display base included. NN7982



**HEDWIG™
OWL POST
WALL DECOR**

Finely crafted and hand-painted sculpt of Hedwig™ to be displayed on wall. Features a scroll with a wax seal. Measures approximately 18 inches in length. NN8965

HARRY POTTER™ PUZZLES

Each premium puzzle consists of 1000 pieces and comes in a collector box.

- A** NN9464 DEMENTORS AT HOGWARTS™ PUZZLE - 30 x 18 inches
 - B** NN9467 THE MARAUDER'S MAP PUZZLE - 35 x 13 inches
 - C** NN9455 GRINGOTTS™ BANK ESCAPE PUZZLE - 34 x 13 inches
 - NN9463 THE QUIBLER MAGAZINE COVER PUZZLE - 28 x 19 inches
 - NN9459 DIAGON ALLEY™ SHOP SIGNS PUZZLES - 5 puzzles
- Each measuring approximately 9.5 - 15.25 inches.



**HARRY POTTER™
CREST BOOKMARK SET**

Die cast metal crest and hand enameled. Set includes 5 bookmarks. Bookmarks measure 6 inches in length. NN8725



CHOCOLATE FROG PROP REPLICA

Features a non-edible Chocolate Frog Prop Replica as seen at Honeydukes™ Sweetshop. Squash it, stretch it, squish it, or just admire it on your desk. Includes a detailed keepsake box and a Dumbledore™ Famous Witches and Wizards Card. NN7428



**HERMIONE GRANGER™
ARTEFACT BOX**

SET INCLUDES: Love Potion Bottle, Yule Ball Snowflake Ornament, School Timetable, O.W.L. Exam Paper, Yule Ball Poster, Gilderoy Lockhart™ Signed Photo and Hogwarts™ Express Ticket. NN7431



HARRY POTTER™ JOURNALS

Set with a hand enameled diecast metal emblem. Hardbound with gilded edges. Measures approx. 9.75 x 6.75 inches.

- E** NN7337 GRYFFINDOR™ JOURNAL
- F** NN7335 HOGWARTS™ JOURNAL
- NN7339 SLYTHERIN™ JOURNAL
- NN7341 HUFFLEPUF™ JOURNAL
- NN7343 RAVENCLAW™ JOURNAL

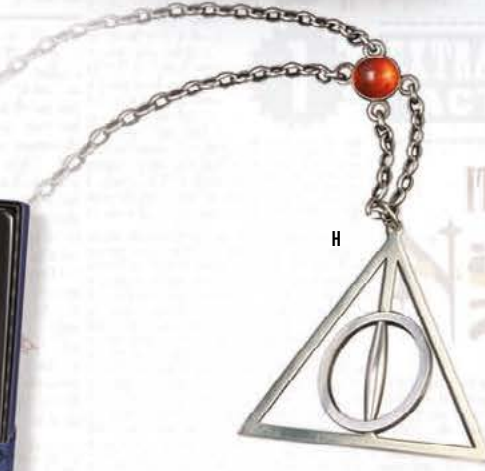
**HARRY POTTER™
ARTEFACT BOX**

SET INCLUDES: Hogwarts™ Acceptance Letter, Sirius Black™ Wanted Poster, Quidditch™ World Cup Ticket, Lily Potter Letter to Sirius, Hogwarts Express Luggage Tag, Order of the Phoenix™ Lenticular Photo and Dumbledore's Army™ Signatures List. NN7430



**XENOPHIUS
LOVEGOOD NECKLACE**

Finely crafted with a rotating center. Includes 22 inch chain and collector box. NN7007



The Noble Collection®
Creators of Finely Crafted Treasures

WIZARDING WORLD characters, names and related indicia are © & ™ Warner Bros. Entertainment Inc. WB SHIELD: © & ™ WBEI. Publishing Rights © JKR. (s21)

Harry Potter



MAGICAL CREATURES

Features detailed sculpt with intricate paint deco. Creatures are removable from base. Measures approximately 7 inches tall. Collect all 18!

- | | | | |
|---|--------|--------|---------------------|
| A | NN7542 | NO. 1 | HEDWIG™ |
| B | NN7346 | NO. 2 | DOBBY™ |
| C | NN7421 | NO. 3 | BASILISK |
| D | NN7539 | NO. 4 | HUNGARIAN HORNTAIL |
| E | NN7670 | NO. 5 | UKRAINIAN IRONBELLY |
| F | NN7546 | NO. 6 | BUCKBEAK™ |
| G | NN7550 | NO. 7 | DEMENTOR™ |
| H | NN7540 | NO. 8 | FAWKES™ THE PHOENIX |
| I | NN7544 | NO. 9 | NAGINI |
| J | NN7552 | NO. 10 | GRINGOTTS™ GOBLIN |
| K | NN7680 | NO. 11 | CROOKSHANKS™ |
| L | NN7543 | NO. 12 | TROLL |
| M | NN7558 | NO. 13 | FLUFFY |
| N | NN7686 | NO. 14 | SCABBERS™ |
| O | NN7678 | NO. 15 | CORNISH PIXIE |
| P | NN7671 | NO. 16 | ARAGOG |
| Q | NN7699 | NO. 17 | MANDRAKE |
| R | NN7682 | NO. 18 | GRINDYLOW™ |



S DIVINATION CRYSTAL BALL

Measures 5 inches in height and comes complete with a solid glass ball.
NN7364

T RUBEUS HAGRID™ UMBRELLA PROP REPLICA

Authentic prop replica of Hagrid's Umbrella. Fully functional and made of high-quality materials. Measures approximately 31.5 inches in length.
NN7865

U THE TRIWIZARD CHAMPIONS WAND SET

Includes the wands of Harry Potter, Cedric Diggory, Fleur Delacour and Viktor Krum. Display measures 17 inches high.
NN7008

V HAGRID™ LANTERN PROP REPLICA

Real working prop replica of Hagrid™ Lantern. Operates alone or with Harry Potter™ Remote Control Wand (sold separately, see page 15). With a quick flick or swish, control the Lantern to turn on, flicker, change light intensity and turn off! Or simply use the buttons on the bottom of lantern to control manually. Measures 13 inches tall. Requires 4 AA batteries (not included).
NN7910



The Noble Collection®
Creators of Finely Crafted Treasures

WIZARDING WORLD
WIZARDING WORLD characters, names and related indicia are © & ™ Warner Bros. Entertainment Inc. WB SHIELD: © & ™ WBEI. Publishing Rights © JKR. (s21)

Harry Potter

THE HARRY POTTER™ CHARACTER WAND COLLECTION

59 authentic recreations. Hand painted in fine detail. Each wand comes with a collector box and name clip. Wands measure 8 - 15 inches in length. Metal name clips provided with each wand attach to wands and displays. Displays sold separately. See wand boxes on page 24.

- A NN8411 HERMIONE GRANGER™
- B NN8290 PROFESSOR MINERVA MCGONAGALL™
- C NN8286 KINGSLEY SHACKLEBOLT™
- D NN8407 SIRIUS BLACK™
- E NN8284 PARVATI PATIL
- F NN8296 FENRIR GREYBACK
- G NN8258 OLIVER WOOD
- H NN8413 RON WEASLEY™
- I NN8401 ALBUS DUMBLEDORE™
- J NN8288 ALASTOR MAD-EYE MOODY
- K NN8228 VINCENT CRABBE
- L NN8200 SNATCHER WAND
- M NN8282 VIKTOR KRUM
- N NN8292 NEVILLE LONGBOTTOM™
- O NN8403 LORD VOLDEMORT™
- P NN8236 DEAN THOMAS
- Q NN8415 HARRY POTTER™
- R NN8409 DRACO MALFOY™
- S NN8280 ALECTO CARROW
- T NN8272 BELLATRIX LESTRANGE
- U NN8276 SEAMUS FINNIGAN
- V NN8405 PROFESSOR SEVERUS SNAPE™
- W NN8264 NIGEL
- X NN8250 NYMPHODORA TONKS™
- Y NN8212 ARTHUR WEASLEY
- Z NN8260 GREGOROVITCH
- AA NN8242 RUFUS SCRIMGEOUR
- BB NN8214 MRS. MOLLY WEASLEY
- CC NN8254 PROFESSOR SYBIL TRELAWNEY

10 CHARACTER WAND DISPLAY

NN8010 Display only. Wands not included.

4 CHARACTER WAND DISPLAY

NN8040 Display only. Wands not included.



The Noble Collection®
Creators of Finely Crafted Treasures



WIZARDING WORLD characters, names and related indicia are © & ™ Warner Bros. Entertainment Inc. WB SHIELD: © & ™ WBEI. Publishing Rights © JKR. (s21)

Harry Potter

forbidden forest forbidden



THE HARRY POTTER™ CHARACTER WAND COLLECTION

Continued from page 23.

- A NN8206 JAMES POTTER
- B NN8218 PERCY WEASLEY
- C NN8238 YAXLEY
- D NN8262 PROFESSOR FILIUS FLITWICK
- E NN8256 PROFESSOR POMONA SPROUT
- F NN8298 PROFESSOR REMUS LUPIN
- G NN8252 LAVENDER BROWN
- H NN8274 KATIE BELL
- I NN8230 GRINDELWALD
- J NN8244 SCABIOR
- K NN8278 MADAM POMFREY
- L NN8216 BILL WEASLEY
- M NN8240 MUNDUNGUS FLETCHER
- N NN8294 PROFESSOR HORACE SLUGHORN
- O NN8232 LUNA LOVEGOOD™
- P NN8266 GREGORY GOYLE
- Q NN8202 CEDRIC DIGGORY
- R NN8210 GINNY WEASLEY™
- S NN8234 XENOPHILIUS LOVEGOOD
- T NN8208 LUCIUS MALFOY
- U NN8246 FLEUR DELACOUR
- V NN8204 CHO CHANG
- W NN8248 PIUS THICKNESSE
- X NN8222 DEATH EATER WAND (BROWN)
- Y NN8226 DEATH EATER WAND (THORN)
- Z NN8221 DEATH EATER WAND (SKULL)
- AA NN8225 DEATH EATER WAND (STALLION)
- BB NN8224 DEATH EATER WAND (SNAKE)
- CC NN8223 DEATH EATER WAND (SWIRL)
- DD NN8220 NARCISSA MALFOY



The Noble Collection®
Creators of Finely Crafted Treasures

WIZARDING WORLD characters, names and related indicia are © & ™ Warner Bros. Entertainment Inc. WB SHIELD: © & ™ WBEI. Publishing Rights © JKR. (s21)

Harry Potter



Harry Potter CHARM BRACELET COLLECTION



**GRYFFINDOR
CHARM BRACELET**
NN7708



**SLYTHERIN
CHARM
BRACELET**
NN7710



**HUFFLEPUFF
CHARM
BRACELET**
NN7714



**RAVENCLAW
CHARM
BRACELET**
NN7712

CHARM BRACELETS

Each Charm Bracelet is finely crafted, gold or silver plated, set with crystals and features three exclusive charms: House Crest, the Sorting Hat and a Lumos butterfly. Bracelets measure 8 inches in length.



INDIVIDUAL CHARMS

These additional charms are available to accent and individualize the Lumos Harry Potter bracelets. These charms clip to the charm bracelet or can be combined with a chain (not included) to be worn as pendants.

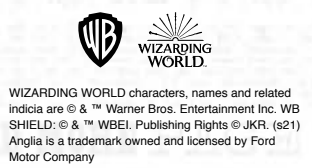
- | | | |
|----|-------------------------------|---------|
| 1 | HOGWARTS EXPRESS | NN 1021 |
| 2 | HOGWARTS CASTLE GOLD PLATED | NN 1032 |
| 3 | HOGWARTS CASTLE SILVER PLATED | NN 1033 |
| 4 | TIME-TURNER | NN 1025 |
| 5 | OWL POST | NN 1034 |
| 6 | DOBBY | NN 1030 |
| 7 | TRIWIZARD CUP | NN 1027 |
| 8 | FLYING WEASLEY CAR | NN 1023 |
| 9 | DEATHLY HALLOWS | NN 1028 |
| 10 | MINISTRY OF MAGIC | NN 1026 |
| 11 | TOM RIDDLE'S DIARY | NN 1024 |
| 12 | WINGED KEY | NN 1029 |
| 13 | QUIDDITCH TRUNK | NN 1035 |
| 14 | FIREBOLT BROOM | NN 1036 |
| 15 | HARRY POTTER'S GLASSES | NN 1037 |
| 16 | MONSTER BOOK OF MONSTERS | NN 1038 |
| 17 | THE GOLDEN EGG | NN 1039 |
| 18 | HEDWIG | NN 1022 |
| 19 | CHOCOLATE FROG | NN 1040 |
| 20 | WIZARD CHESS PIECE | NN 1041 |
| 21 | DARK MARK | NN 1042 |
| 22 | FAWKES THE PHOENIX | NN 1044 |
| 23 | ORDER OF THE PHOENIX | NN 1045 |
| 24 | SLYTHERIN'S LOCKET | NN 1046 |
| 25 | BUCKBEAK | NN 1047 |
| 26 | ELDER WAND | NN 1048 |
| 27 | GRINGOTT'S DRAGON | NN 1049 |
| 28 | REMEMBRALL | NN 1050 |
| 29 | LIGHTNING BOLT | NN 1051 |
| 30 | GOLDEN SNITCH | NN 1052 |



"Lumos is a spell I created in HARRY POTTER that brings light to a desperately dark and frightening place."
"At Lumos this is what we do: we reveal the hidden children locked away behind closed doors and forgotten by the world, so that everyone first of all understands the problem and then works together to fix it."

J.K. Rowling
Founder and President of Lumos

At least 15% of the suggested retail price of the charm bracelet will go to Lumos Foundation, an international non-profit organization, founded by J.K. Rowling. Lumos works to end the institutionalization of children around the world and helps to support the eight million children in orphanages regain their right to a family life.
www.wearlumos.org
Lumos Foundation is a registered charity in the UK with no. 1112575





**FANTASTIC BEASTS™
BOOKMARK SET**

Set of 4 bookmarks. Each bookmark features a detailed, hand painted sculpt of creature on top. Includes collector box. Bookmark measures approximately 3 inches tall. Set includes: Bowtruckle™, Niffler™, Thunderbird™, and Demiguise™.
NN7553

**FANTASTIC BEASTS:
CRIMES OF GRINDELWALD™ COLLECTOR WAND SET**

Set of 5 wands from Fantastic Beasts: Crimes of Grindelwald™ film. Collection also includes a beautifully crafted wall display shaped as the Deathly Hallows. Display measures 16.5 inches tall. Wands measures 14 inches to 15 inches long. Set includes Leta Lestrange™, Theseus Scamander™, Gellert Grindelwald™, Nicolas Flamel™ and Newt Scamander™.
NN8088



FANTASTIC BEASTS™ COLLECTOR PENS

Finely crafted die cast pens feature detailed sculpt of creature on top. Refillable pens measure approximately 6.75 inches tall.

- P NN5135 THUNDERBIRD™ PEN
- Q NN5137 DEMIGUISE™ PEN
- R NN5130 BOWTRUCKLE™ PEN
- S NN5128 NIFFLER™ PEN



The Noble Collection®
Creators of Finely Crafted Treasures

FANTASTIC BEASTS

AND WHERE TO FIND THEM™



**NEWT SCAMANDER™
ILLUMINATING WAND**

A recreation of Newt Scamander's wand. Wave the wand and the light goes on! Wave it again, and it turns off! Wand measures 14 inches in length.
NN5061



**O NIFFLER™ ELECTRONIC
INTERACTIVE PLUSH PUPPET**

Watch the Niffler™ come to life, as you pat his head and hear authentic sounds from the films. He can also hold the coin in his hand or store in his stomach pouch. Requires 3 AAA batteries (included). Measures approximately 8.5 inches tall.
NN8166

**M BENDABLE
BOWTRUCKLE™**

Replica figure of the Bowtruckle that is both bendable and poseable. Measures approximately 7 inches tall.
NN5006

**N GELLERT GRINDELWALD™
PENDANT**

Intricately detailed authentic prop replica. Pendant is silver plated and measures approximately 3 inches tall. Includes a 26 inch chain.
NN8096

**FANTASTIC BEASTS™ WANDS
WITH COLLECTOR BOXES**

Authentic prop replica, hand painted in fine detail. Each wand measures approximately 13 - 15 inches in length. Comes with collector box.

- A NN8055 BUNTY
- B NN8063 CORVUS LESTRANGE, SR.
- C NN8057 VINDA ROSIER
- D NN9906 ALBUS DUMBLEDORE™
- E NN8071 LETA LESTRANGE
- F NN8075 YUSUF KAMA
- G NN8081 THESEUS SCAMANDER
- H NN8077 ABERNATHY
- I NN8079 NICOLAS FLAMEL
- J NN8073 SPIELMAN
- K NN8083 SKENDER
- L NN8086 GELLERT GRINDELWALD



FANTASTIC BEASTS AND WHERE TO FIND THEM characters, names and related indicia are © & ™ Warner Bros. Entertainment Inc. WB SHIELD, © & ™ WBEI. WIZARDING WORLD trademark and logo © & ™ Warner Bros. Entertainment Inc. Publishing Rights © JKR. (s21)



NEWT SCAMANDER™ JOURNAL

Authentic prop replica.
Measures approx.
7 x 4.5 inches.

NN5013

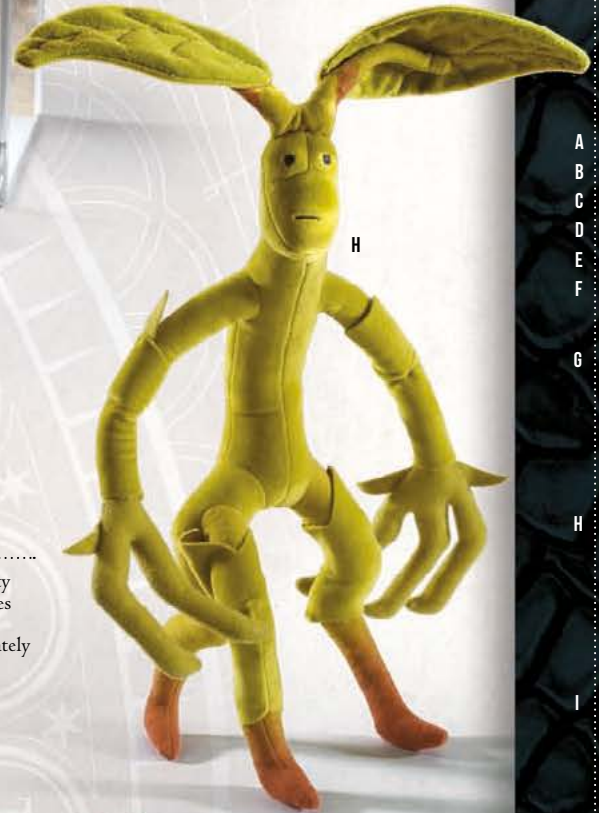


FANTASTIC BEASTS

MAGICAL CREATURES

Intricately detailed and painted.
Display case measures
approximately 7 x 4.25 inches.
Removable cover and creature.

- A NN5260 NO.6 THUNDERBIRD™
- B NN5262 NO.5 OCCAMY™
- C NN5253 NO.4 DEMIGUISE™
- D NN5258 NO.3 FWOOPER™
- E NN5250 NO.2 BOWTRUCKLE™
- F NN5248 NO.1 NIFFLER™



G NIFFLER™ COLLECTOR PLUSH

Measures approx. 12.5 inches tall.
NN8875



BABY NIFFLER™ PLUSH

Made of high-quality materials and features a soft, silky plush.
Measures approximately 9.5 inches in length.
NN8002 GREY

H BOWTRUCKLE™ COLLECTOR PLUSH

Measures approx. 14 inches tall.
NN5089

I DEMIGUISE™ COLLECTOR PLUSH

Measures approx. 12.5 inches tall.
NN8852

FANTASTIC BEASTS™ WANDS WITH COLLECTOR BOXES

Authentic prop replica, hand painted in fine detail. Each wand measures approximately 13 - 15 inches in length. Comes with collector box.

- J NN5622 NEWT SCAMANDER™
- K NN9906 ALBUS DUMBLEDDORE™
- L NN5624 TINA GOLDSTEIN™
- M NN5626 QUEENIE GOLDSTEIN™
- N NN5628 PERCIVAL GRAVES™
- O NN5630 SERAPHINA PICQUERY™

FANTASTIC BEASTS: AND WHERE TO FIND THEM™ WAND COLLECTION

Hand-painted wand display. Diecast metal MACUSA emblem. Display measures 16.5 inches tall. Includes the wands of Newt Scamander™, Tina Goldstein™, Queenie Goldstein™, Percival Graves™ and Seraphina Picquery™. Wands measure 14 to 15 inches long.
NN5068



The Noble Collection®

Creators of Finely Crafted Treasures



FANTASTIC BEASTS AND WHERE TO FIND THEM characters, names and related indicia are © & ™ Warner Bros. Entertainment Inc. WB SHIELD: © & ™ WBEL. WIZARDING WORLD trademark and logo © & ™ Warner Bros. Entertainment Inc. Publishing Rights © JKR. (s21)



THE AXE OF GIMLI™

Made of wood, leather and metal, it comes with wall mounting hardware for easy display. Measures approximately 34 inches in length.
 NN2222



GANDALF™ THE GREY CANDLE HOLDER

The top of Gandalf™ the Grey's staff is recreated in cold cast porcelain as a beautiful candle votive holder. Measures approximately 9 inches in height.
 NN2267

THE FURY OF THE WITCH KING INCENSE BURNER

An exquisite sculpture of the Witch King, which wraps around a glass Eye of Sauron, hiding the incense burner behind it. Measures 8" in height.
 NN9471

THE CROWN OF ELESSAR™

Die cast, then plated in sterling silver and 24K gold. Comes complete with display plinth.
 NN2222



THE LORD OF THE RINGS™ LETTER OPENERS

Authentic miniature reproduction. Letter openers come with a collector wood box measuring 10 x 3.5 inches.

- A NN5522 STING LETTER OPENER
- B NN9281 HADHAFANG LETTER OPENER
- C NN4468 ANDURIL LETTER OPENER



Back of Board

THE LORD OF THE RINGS™



LORD OF THE RINGS™ CHESS SET: BATTLE FOR MIDDLE-EARTH

Intricately detailed chess set, that includes 32 finely sculpted pieces and full graphic chess board.
 NN2174

MGM
 © Warner Bros. Entertainment Inc. All rights reserved. THE HOBBIT: AN UNEXPECTED JOURNEY, THE HOBBIT: THE DESOLATION OF SMAUG, THE HOBBIT: THE BATTLE OF THE FIVE ARMIES and the names of the characters, items, events and places therein are TM of The Saul Zaentz Company d/b/a Middle-earth Enterprises under license to New Line Productions, Inc. (s21)

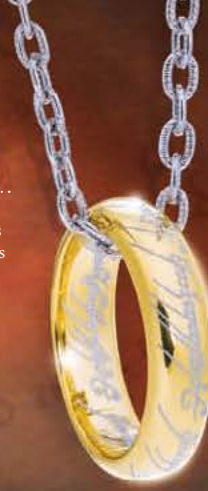


The Noble Collection™
 Creators of Finely Crafted Treasures

**THE ONE RING™
STERLING SILVER EDITION**

Cast in sterling silver and richly plated in pure gold. Each ring is individually engraved and comes with a wooden collector's box, 24 inch chain.

NN9269



**LOTHLORIEN™
CANDLE HOLDER**

The frosted glass top holds a variety of candle sizes. 10 inches in height.

NN9641



THE ELVEN BROOCH

Finely handcrafted in solid sterling silver and rich green enameling. Measures 2.75 inches in length.

NN9229



**THE LORD OF THE RINGS
COLLECTOR'S CHESS SET**

This chess set is one of the most stunning works of art ever created by The Noble Collection. The set comes complete with 32 playing pieces portraying characters from The Fellowship of the Ring, The Two Towers Character Package and The Return of the King Character Package. These additional character packages fit in the 24 niches that surround the playing board. Sculpted in fine pewter, chess pieces measure 2-3 inches in height. All packages come with custom form fitted storage cases. Board measures 15 x 15 inches in length, 4 inches in height. An incredibly detailed relief map guides you through Middle-earth as you cast your moves on the translucent battlefield.

NN2990

Includes chessboard and 32 pieces shown on top of chessboard. Ground shipping only.

**THE TWO TOWERS™
CHARACTER PACKAGE**

Shown poised on the sides of the chessboard.

NN2172

**THE RETURN OF THE KING™
CHARACTER PACKAGE**

NN9008 (shown below)



The Noble Collection®
Creators of Finely Crafted Treasures

MGM
© Warner Bros. Entertainment Inc. All rights reserved. THE HOBBIT: AN UNEXPECTED JOURNEY, THE HOBBIT: THE DESOLATION OF SMAUG, THE HOBBIT: THE BATTLE OF THE FIVE ARMIES, and the names of the characters, items, events and places therein are TM of The Saul Zaentz Company d/b/a Middle-earth Enterprises under license to New Line Productions, Inc. (s21)

THE LORD OF THE RINGS



E



F



G



H



I



K



L



J



M

The Noble Collection
TOYS

BendyFigs

LORD OF THE RINGS™ BENDYFIGS™

A Toylectible™ line of figures with highly-detailed sculpts in a bendable form factor to pose and display. Gandalf the Grey™ and Frodo Baggins™ feature fabric cloaks. All three figures feature character specific accessories and include a removable display stand. Measures approximately 7 inches tall.



- J NN2816 GANDALF™
- K NN2817 FRODO™
- L NN2818 GOLLUM™
- M NN2819 SAURON™

GOLLUM™ PLUSH

Measures approximately 8 inches. NN2716

**THE ARWEN EVENSTAR™
COLLECTION**

NN2987 EARRINGS
Sterling silver. Measures 1.5 inches in length.

NN9551 PENDANT DISPLAY
Crafted in wood and fine pewter with glass dome. (Pendant not included)

**THE EVENSTAR™
PENDANT OF ARWEN™**

Authentic prop replica. Measures 2.5 inches in length. Includes chain. NN2770 Sterling Silver

THE RING OF ARAGON™

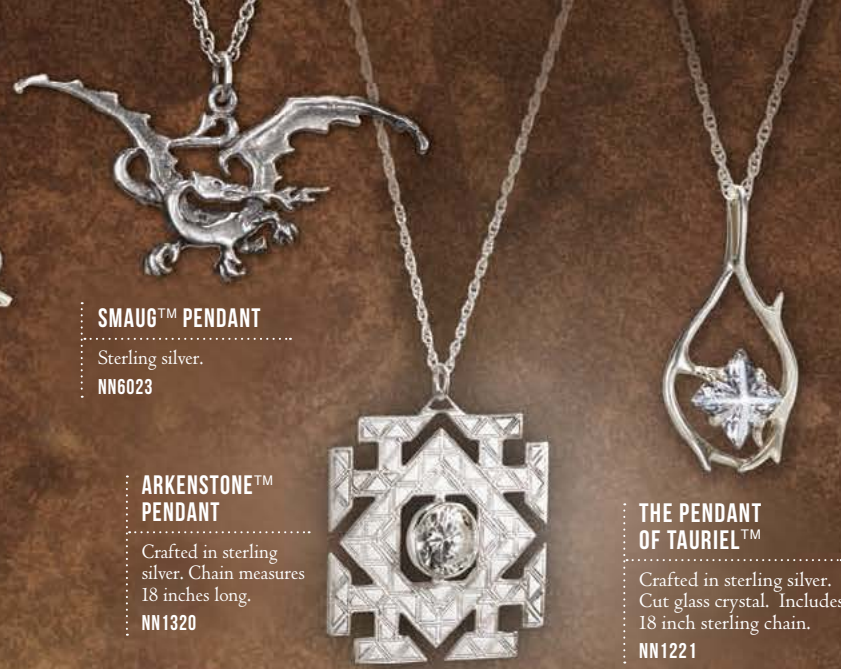
Sterling silver, accented in gold and set with a green crystal. Wooden collector's box included. Whole sizes 6-14. NN9687



**THE HOBBIT™
COLLECTOR SWORDS**

Authentic full size prop replicas. Stainless steel blades. Each comes with die cast metal display. Sting Sword measures 22 inches long and has bas relief hand enameled handle. Orcrist Sword measures 39.5 inches long. Glamdring Sword measures 47 inches long. For ages 18+

- A NN1276 THORIN'S DWARVEN COLLECTOR SWORD
- B NN1237 STING COLLECTOR SWORD
- C NN1245 GLAMDING COLLECTOR SWORD



SMAUG™ PENDANT

Sterling silver.
NN6023

**ARKENSTONE™
PENDANT**

Crafted in sterling silver. Chain measures 18 inches long.
NN1320

**THE PENDANT
OF TAURIEL™**

Crafted in sterling silver. Cut glass crystal. Includes 18 inch sterling chain.
NN1221

**SMAUG™
INCENSE BURNER**

Finely detailed and hand painted. Place the incense inside the base and watch the smoke drift from the mouth of SMAUG. Requires cone incense (not included). Measures 10 inches in height.
NN7526

**THORIN
OAKENSHIELD™ KEY**

Key measures 5.5 inches. Collector box included.
NN2438

**THE PIPE OF GANDALF™
AND BILBO BAGGINS™**

Authentic functional replicas. Each measures approximately 9 inches. For ages 18+

- NN1233 THE PIPE OF GANDALF
- NN1235 THE PIPE OF BILBO BAGGINS



THE HOBBIT™

MOTION PICTURE TRILOGY



**GALADRIEL™ FLOWER
NECKLACE AND EARRINGS**

Crafted in sterling silver. Chain measures 18 inches long.

- D NN1528 NECKLACE
- E NN1259 EARRINGS

THE RING OF GALADRIEL™

Crafted in sterling silver. Whole Sizes 5-12.

NN9174

MAP OF MIDDLE-EARTH™

Mounted on wood. Display measures 16 x 10 inches.

NN1312

**THE HOBBIT :
AN UNEXPECTED JOURNEY™
LETTER OPENER SET**

Set includes Sting™, Glamdring™ and Orcrist™ miniature reproductions. Comes with wood display measuring 10 x 6 inches.

NN1210

**GANDALF™
ILLUMINATING STAFF**

Full size, authentic illuminating prop replica. Measures 73 inches tall.

NN1247

**STING™ AND ORC RIST™
LETTER OPENERS**

Authentic miniature reproduction. Letter opener comes with a collector wood box measuring 10 x 3.5 inches. Sold separately.

- J NN1202 STING LETTER OPENER
- K NN1204 ORCRIST LETTER OPENER

DWARVEN TREASURE COIN SET

Authentic prop replica. Set includes five coins and wood display box.

NN6087

**THE HEADDRESS OF
GALADRIEL™**

An intricately entwined prop replica of Galadriel's headdress, with beautiful flower details.

NN1312



MGM NEW LINE ENTERTAINMENT
© Warner Bros. Entertainment Inc. All rights reserved. THE HOBBIT: AN UNEXPECTED JOURNEY, THE HOBBIT: THE DESOLATION OF SMAUG, THE HOBBIT: THE BATTLE OF THE FIVE ARMIES and the names of the characters, items, events and places therein are TM of The Saul Zaentz Company d/b/a Middle-earth Enterprises under license to New Line Productions, Inc. (©21)



OUTLANDER

— THE SERIES —



CLAIRE'S STERLING SILVER WEDDING RING

Finely crafted, prop replica of Claire's Wedding Ring. Made of sterling silver. Whole sizes 5-9.

NN5320



TM & © 2020 Sony Pictures Television Inc. All Rights Reserved.



THE DA VINCI CODE

THE DA VINCI CODE MINI CRYPTEX

Die-cast with an aged finish. Overall length is 4 inches.

NN5335 (not Shown)



The Noble Collection®

Creators of Finely Crafted Treasures

The Da Vinci Code: © 2021 Columbia Pictures Industries, Inc. All rights reserved.

THE DA VINCI CODE CRYPTEX

An invention as unique and mysterious as the secret it holds. The turning dials click as the letters turn and only one code can spring open the locked chamber. A beautifully crafted treasure that is mesmerizing to hold and fascinating to display. 6 inches in length, comes with collector box. 5" X 1" diameter hidden compartment.

NN5120



BendyFigs™

UNIVERSAL
MONSTERS



The Noble Collection
TOYS

BendyFigs



UNIVERSAL™ MONSTERS BENDYFIGS™

A Toylectible™ line of figures with highly-detailed sculpts in a bendable form factor to pose and display. Dracula and Bride of Frankenstein feature fabric accessories. Each figure includes a removable display stand. Measures approximately 7 inches tall.

- A NN1162 DRACULA
- B NN1166 FRANKENSTEIN
- C NN1163 BRIDE OF FRANKENSTEIN
- D NN1167 CREATURE FROM THE BLACK LAGOON

© Universal City Studios LLC. All Rights Reserved



**HARLEY QUINN™
LOVES THE JOKER
NECKLACE SET**

Authentic prop replica. Gold plated and set with European Crystals. Chains measures 17-23 inches. NN4060



**HARLEY QUINN
BASEBALL BAT PEN**

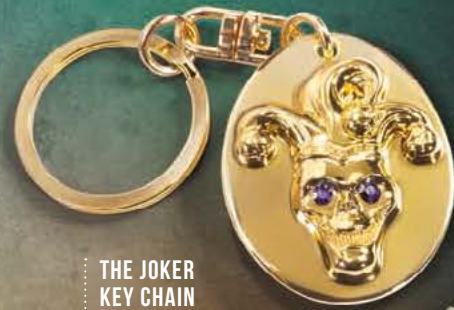
Harley Quinn's baseball bat is miniaturised in this ballpoint pen. Included is a Harley Quinn bookmark. NN4542



The Noble Collection®
Creators of Finely Crafted Treasures

DC SUICIDE SQUAD and all related characters and elements © & TM DC Comics and Warner Bros. Entertainment Inc. (s21)

SUICIDE SQUAD™



**THE JOKER
KEY CHAIN**

NN4546



THE JOKER CANE

Authentic prop replica. Die cast handle hand enameled and set with European crystals. Measures approximately 37.5 inches. NN4558

**HARLEY QUINN
BASEBALL BAT**

Authentic prop replica collector wood baseball bat. Measures approximately 31.5 inches in length. NN4568

THE DARK KNIGHT

TRILOGY



A



B



C



E



F



G



D

A THE BAT-POD

Authentic die cast replica. Measures 11 inches long. Display stand included. NN4001

**B HARVEY DENT™ &
TWO-FACE™ COINS**

Two collector struck silver plated coins. Display box included. Coins are removable. Not currency. No monetary value. NN4538

C THE BATARANG™

Authentic high grade replica. Display measures 9 inches. NN4129

**D THE DARK KNIGHT™
SPECIAL EDITION COWL**

Impressive, full size display cowl replica. Measures 21 inches tall. Pedestal display included. NN4527

**E THE BATARANG™
FOLDING MONEY CLIP**

Die cast, measures 4 inches open. Magnetic folding mechanism. NN4318 BRONZE
NN4292 BLACK

**G THE BATMAN™
COLLAPSIBLE DESK CLOCK**

Gun metal finish. Measures 4 inches closed. NN4595



BATMAN and all related characters and elements © & TM DC Comics. THE DARK KNIGHT TRILOGY and all related characters and elements © & TM DC Comics and Warner Bros. Entertainment Inc. (s21)



AQUAMAN™ TRIDENT

Finely crafted prop replica that features detailed sculpt and decoration. Conveniently breaks down in three parts for storage. When fully assembled, Trident measures 74 inches tall, for a full scale replica.
 NN3254



GREEN LANTERN™ LIGHT UP RING

Pliant ring shank made of non-metal material. Fits most sizes.
 NN6133



GREEN LANTERN™ MOVIE POWER LANTERN

Full size movie Power Lantern prop replica with light up function.
 NN5001

GREEN LANTERN™ SCULPT

Solid bronze. 12 inches in height.
 NN9525



BATMAN™ BATARANG™ AND DISPLAY

Crafted in die cast aluminum. Comes with wood display. Measures 8.5 inches in length.
 NN3200



The Noble Collection
TOYS
 BendyFigs™

DC™ CHARACTER BENDYFIGS™

A Toylectible™ line of figures with highly-detailed sculpts in a bendable form factor to pose and display. All nine figures feature a removable display stand and may include a character specific accessory. Measures approximately 7 inches tall.

- A NN3252 AQUAMAN™ BENDYFIG™
- B NN4563 HARLEY QUINN™ BENDYFIG™
- C NN8351 WONDER WOMAN™ BENDYFIG™
- D NN5943 GREEN LANTERN™ BENDYFIG™
- E NN4402 THE FLASH™ BENDYFIG™
- F NN4403 SUPERMAN™ BENDYFIG™
- G NN4401 BATMAN™ BENDYFIG™
- H NN4720 CATWOMAN™ BENDYFIG™
- I NN4781 THE JOKER™ BENDYFIG™



The Noble Collection®
 Creators of Finely Crafted Treasures

BATMAN and all related characters and elements © & TM DC Comics. THE DARK KNIGHT TRILOGY and all related characters and elements © & TM DC Comics and Warner Bros. Entertainment Inc. (s21)



BATMAN™ COLLECTOR CHESS SET

A press of the Batman symbol illuminates 50 LED lights encircling the clear playing surface that lights the board, the GOTHAM CITY™ cityscape underneath and projects a Bat-Signal to the sky. The oversized board measures over 20 inches in length on each side. Playing pieces measure between 2.5 to 5.5 inches tall and are made in fine pewter and die cast metal.

NN4209



BATMAN and all related characters and elements © & TM DC Comics. THE DARK KNIGHT TRILOGY and all related characters and elements © & TM DC Comics and Warner Bros. Entertainment Inc. (s21)



The Noble Collection®
Creators of Finely Crafted Treasures





JUMANJI BOARD GAME COLLECTOR REPLICA

Beautifully crafted and officially authorized full-scale prop replica of the iconic Jumanji Board Game. Features finely-detailed relief with antiqued paint flourishes, authentic sculpted game pieces, and high-quality graphic artwork inside, making it the ultimate Jumanji collector set. Also includes instructions and accessories for all-new exciting gameplay for two to four players. Measures approximately 16 x 11 x 4 inches when closed. NN3531



TM & © 2021 Columbia Pictures Industries, Inc. All Rights Reserved.

JUMANJI™

AN ADVENTURE FOR THOSE WHO SEEK TO FIND A WAY TO LEAVE THEIR WORLD BEHIND



JUMANJI MINIATURE ELECTRONIC GAME BOARD

Miniature version of the Jumanji game board, that features lights and sounds when you open the game. Measures approximately 7 x 5 inches closed. Batteries included. NN3543



JUMANJI CHARACTER PLUSH

Miniature plush dolls measuring approximately 6 inches in height.

- A NN3506 RUBY ROUNDHOUSE
- B NN3502 SMOLDER BRAVESTONE
- C NN3508 MOUSE
- D NN3506 PROF SHELLY OBERON



**LONGCLAW
LETTER OPENER**

Die cast metal handle and stainless steel blade. Measures 9 inches.
NN0044



A

SIGIL PENDANTS

Crafted in sterling silver. Each measures approximately 1 inch and includes 18 inch sterling silver chain.

- A NN0065 STARK PENDANT
- B NN0062 LANNISTER PENDANT
- C NN0064 TARGARYEN PENDANT



B



C



D

ICE LETTER OPENER

Die cast metal handle and stainless steel blade. Measures 9 inches.
NN0048

**IRON THRONE
BOOKEND**

Hand painted. Measures 7.5 inches in height.
NN0071



The Noble Collection®
Creators of Finely Crafted Treasures

GAME OF THRONES™



E



F



G

DRAGON EGGS

Authentic prop replica. Intricately detailed and hand painted. Stand included. Eggs measure 8 inches in height.

- D NN0031 VISERION DRAGON EGG
- E NN0030 DRAGON DRAGON EGG
- F NN0029 RHAEGAL DRAGON EGG

DRAGON EGG PENDANT

Crafted in sterling silver, measures 1 inch and includes 18 inch chain.
NN0038

HAND OF THE KING

Authentic prop replica pin. Intricately detailed. Measures approximately 4.5 inches.
NN0036

DRAGON SCULPTURES

Amazingly detailed, hand painted. Each measures approximately 4.5 inches in height.

- I NN0079 DRAGON BABY DRAGON
- J NN0075 VISERION BABY DRAGON
- K NN0073 RHAEGAL BABY DRAGON



I



H



J



K

HBO™ Official HBO Licensed Product © 2021 Home Box Office, Inc. All Rights Reserved. HBO and related trademarks are the property of Home Box Office, Inc.



**STAR TREK
TRIDIMENSIONAL CHESS SET**

Authentic prop replica of the iconic Tridimensional Chess Set, as seen in the classic TV series *Star Trek*. Includes 32 die cast pieces that measure approximately 1.5 inches tall. Chess Set measures approximately 13 inches tall and features translucent acrylic game boards.
NN1525

TM & © 2020 CBS Studios Inc. STAR TREK and related marks and logos are trademarks of CBS Studios Inc. All Rights Reserved.



STAR TREK™



The Noble Collection
TOYS
BendyFigs

STAR TREK BENDYFIGS™

A Toylectible™ line of figures with highly-detailed sculpts in a bendable form factor to pose and display. All characters feature an iconic accessory from the series. Figures include a removable display stand and measure approximately 7 inches tall.

- A NN1503 SPOCK
- B NN1504 KIRK
- C NN1501 UHURA
- D NN1502 MCCOY



STAR TREK™

STAR TREK TRIDIMENSIONAL CHESS SET

Authentic prop replica of the iconic Tridimensional Chess Set, as seen in the classic TV series *Star Trek*. Includes 32 die cast pieces that measure approximately 1.5 inches tall. Chess Set measures approximately 13 inches tall and features translucent acrylic game boards.

NN 1525



The world of fine craftsmanship
The Noble Collection®

