



WEAVER GREEN

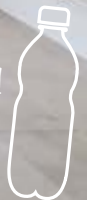


Great textiles shouldn't cost the Earth



**FREE
DELIVERY**
ON ALL UK ORDERS
OVER £50

Made from
100% recycled
plastic bottles!





Welcome to Weaver Green

Hello – lovely to meet you...

We take some of the 50 billion waste plastic bottles that find their way into our seas and landfill every year, and turn them into beautiful rugs, throws, blankets and cushions. We've recycled 160 million plastic bottles so far, and we love making soft, easy to live with, washable textiles that make your home a little bit lovelier. You also get to feel good in the knowledge that you've recycled up to 5,400 plastic bottles in the process.

All our textiles can withstand the rigours of family life and are immune to red wine stains and muddy paws – they can also be machine washed at 40 degrees.

Weaver Green....great textiles shouldn't cost the Earth.

Tasha Barney

WAYS TO SHOP

ONLINE

weavergreen.com

PHONE

01548 431902

EMAIL

weaver@weavergreen.com



FREE DELIVERY

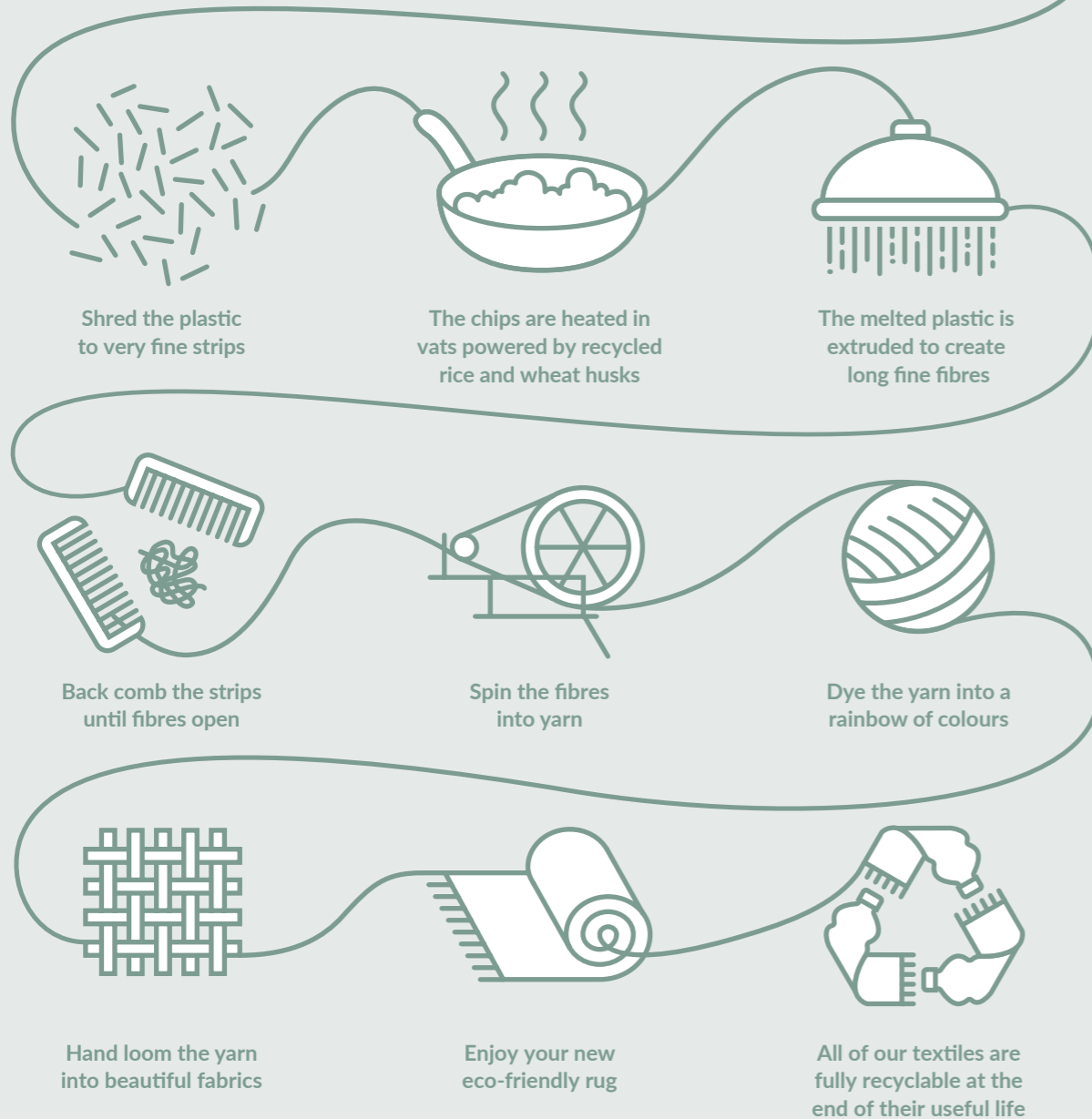
ON ALL UK ORDERS
OVER £50

HOW WE DO IT

We've developed a process of recycling waste single use plastic bottles and turning them into a useful yarn that has the look and feel of a natural wool or cotton fibre, but with all the amazing practical, hard wearing and washable properties of plastic. The process took us over 7 years to develop with lots of trial and error along the way, and we are proud of the result – a tactile, soft and natural feeling wonder yarn!



We start with plastic bottles



160^M

The number of plastic bottles we've recycled since we started



We send all our textiles to you in recycled and recyclable paper packaging



We use recycled wheat and rice husks to heat our dyeing vats

100%

All of our textiles are made only from 100% recycled plastic bottles and can be fully recycled at the end of their life.

40%

Of the plastic bottles we recycle are salvaged from waterways



Our production process uses a closed water system to constantly recycle, purify and reuse the same water



This brochure is produced with FSC rated paper inline with The World Land Trust and printed using 40% solar power



Our products can be made from anywhere up to 5,400 recycled PET bottles. Look out for more information throughout this brochure.





Oxford Stripe and Diamond Blankets

Soft and cosy, at 230cm long, our brilliant Diamond and Oxford Stripe blankets are big enough for at least two. Perfect as a super insulated picnic blanket, bed or sofa throw, they feel like wool and are machine washable. Each blanket recycles up to 300 plastic bottles.

Diamond and Oxford Stripe blankets are available in fourteen colours; Gooseberry, Navy, Chinchilla, Coral, Dove Grey, Capri, Aqua, Lavender, Azure, Monsoon, Cobalt, Tabby, Shell and Teal.

230cm x 130cm **£50**



Oxford Stripe and Diamond Cushions

Designed to coordinate with our Weaver Green blankets, with a NEW updated cotton feel front and a soft linen weight backing. All of our cushions are made from recycled plastic bottles, including the inner pad, so are easy to clean and great for indoor and outdoor use.

Diamond and Oxford Stripe cushions are available in fourteen colours; Gooseberry, Capri, Navy, Cobalt, Tabby, Monsoon, Chinchilla, Coral, Lavender, Shell, Teal, Azure, Aqua and Dove Grey.

45cm x 45cm **£35**

Both available in two designs and fourteen colours



Herringbone Blankets

A classic herringbone weave in ten colours, soft and machine washable – perfect for long evenings by the fire, or very smart as a bed throw.

Herringbone blankets are available in ten colours; Lavender, Shell, Aqua, Gooseberry, Azure, Tabby, Capri, Chinchilla, Navy, Dove Grey. Matching rugs are also available in select colours.

230cm x 130cm

£50



Hammams

A brilliant lightweight addition, our Hammam throws feel just like heavy cotton, but are made from 300 recycled plastic bottles. Perfect to take to the beach, or wrap round your shoulders on a summer evening.

Hammams are available in eight colours; Shell, Teal, Navy, Chinchilla, Coral, Dove Grey, Gooseberry and Cornflower. Matching cushions are also available in select colours.

200cm x 100cm

£45





French Linen Throws

With the look and feel of vintage French linen, soft, drapery and in muted Provençal colours, our linen feel throws are perfect as picnic blankets, shawls or bed and sofa throws. Our linen throws can be machine washed at 40 degrees.

French linen throws come in a variety of colours and designs. Cannes Coral & Grey, Bandol Blue, Cassis Blue, Antibes Linen & Grey, Antibes Coral, Antibes Linen & Blue, Antibes Grey & Linen and Antibes Blue & Linen.

Throws 200cm x 110cm **£45**

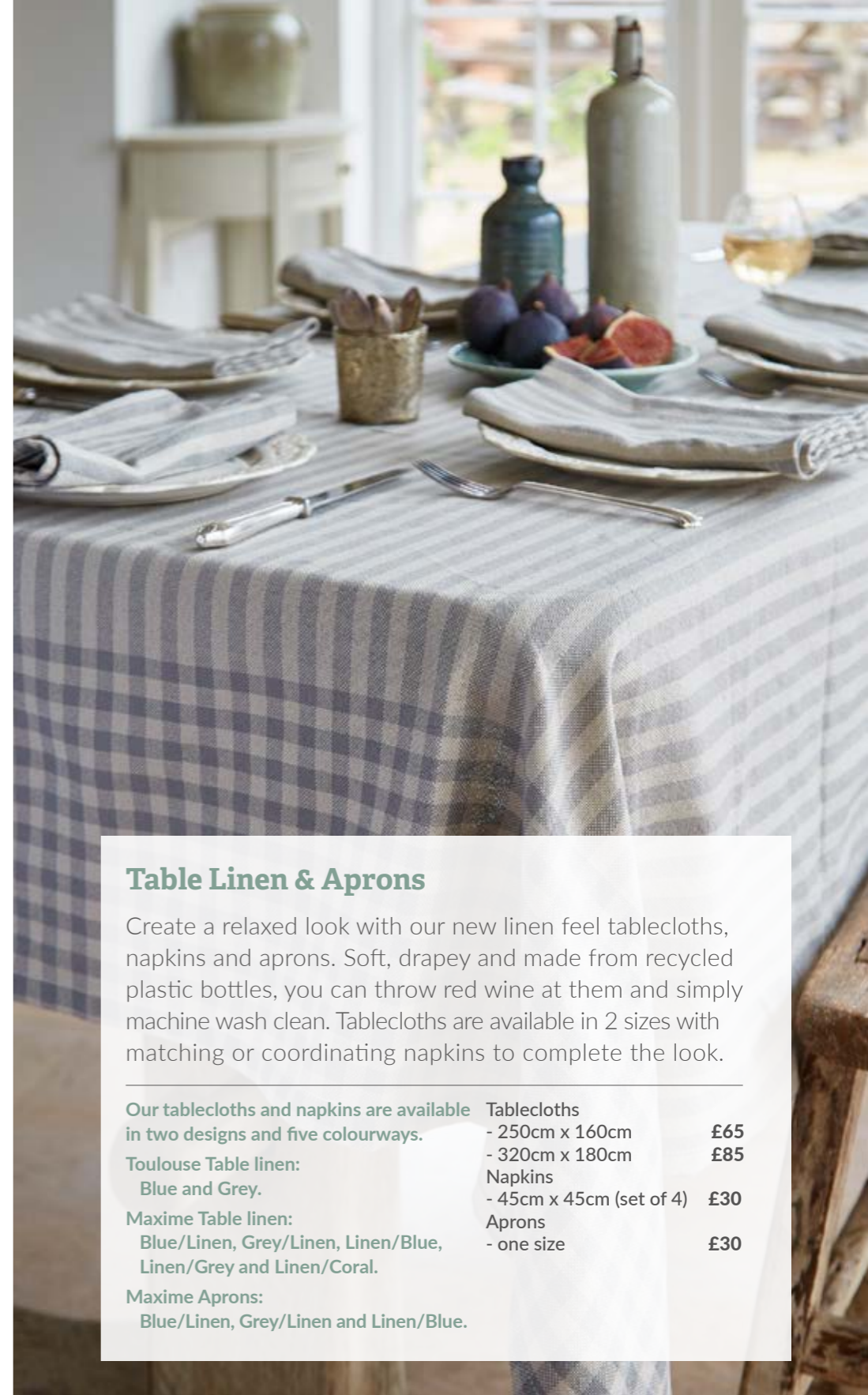


Table Linen & Aprons

Create a relaxed look with our new linen feel tablecloths, napkins and aprons. Soft, drapery and made from recycled plastic bottles, you can throw red wine at them and simply machine wash clean. Tablecloths are available in 2 sizes with matching or coordinating napkins to complete the look.

| | | |
|---|--------------------------|------------|
| Our tablecloths and napkins are available in two designs and five colourways. | Tablecloths | |
| Toulouse Table linen: | - 250cm x 160cm | £65 |
| Blue and Grey. | - 320cm x 180cm | £85 |
| Maxime Table linen: | Napkins | |
| Blue/Linen, Grey/Linen, Linen/Blue, Linen/Grey and Linen/Coral. | - 45cm x 45cm (set of 4) | £30 |
| Maxime Aprons: | Aprons | |
| Blue/Linen, Grey/Linen and Linen/Blue. | - one size | £30 |



Marseille

Inspired by the beautiful washed out blues and simple white linear patterns on fabrics from Southern France, our new Marseille range makes every table a joy to sit at. Featuring table runners for informal table dressing, generous napkins to catch spills, aprons that are perfect for rustling up lazy lunches or pottering in the garden, and beautiful soft throws to drape over bare shoulders as the evening chill comes in.

The Marseille range is available in the colour Duck Egg, as pictured.

| | |
|-------------------------------|-----|
| Apron | £30 |
| Cushion 45cm x 45cm | £45 |
| Cushion 40cm x 60cm | £45 |
| Throw 200cm x 110cm | £55 |
| Table Runner 180cm x 36cm | £45 |
| Table Runner 250cm x 36cm | £55 |
| Napkin (set of 4) 45cm x 45cm | £30 |



Avignon

Soft and drapery, our Avignon Duck Egg throws are perfect beach companions, with lots of space for sunbathing and lounging on. We also use ours inside as the perfect single bed throws and to rescue chairs from muddy paws.

| | |
|---------------------|-----|
| Throw 200cm x 110cm | £55 |
|---------------------|-----|

Eivissa range

Our new monochrome Eivissa range of cushions and throws are inspired by days spent shading on cool terraces in Ibiza. Calm, cool and the perfect backdrop to lazy afternoons snoozing with a chilled glass and a good book in hand. Mix and match designs to create one colour palette but with interesting contrasting patterns that are perfect for use both indoors and out.

Eivissa is available in four different designs; Las Salinas, Formentera, Trucadors and La Brasa in a selection of throws and cushion sizes.

Throws;

Las Salinas, Formentera, La Brasa
200cm x 110cm £55

Cushions;

Las Salinas, Formentera, Trucadors,
45cm x 45cm £45
40cm x 60cm £45





Four designs in up to six colours

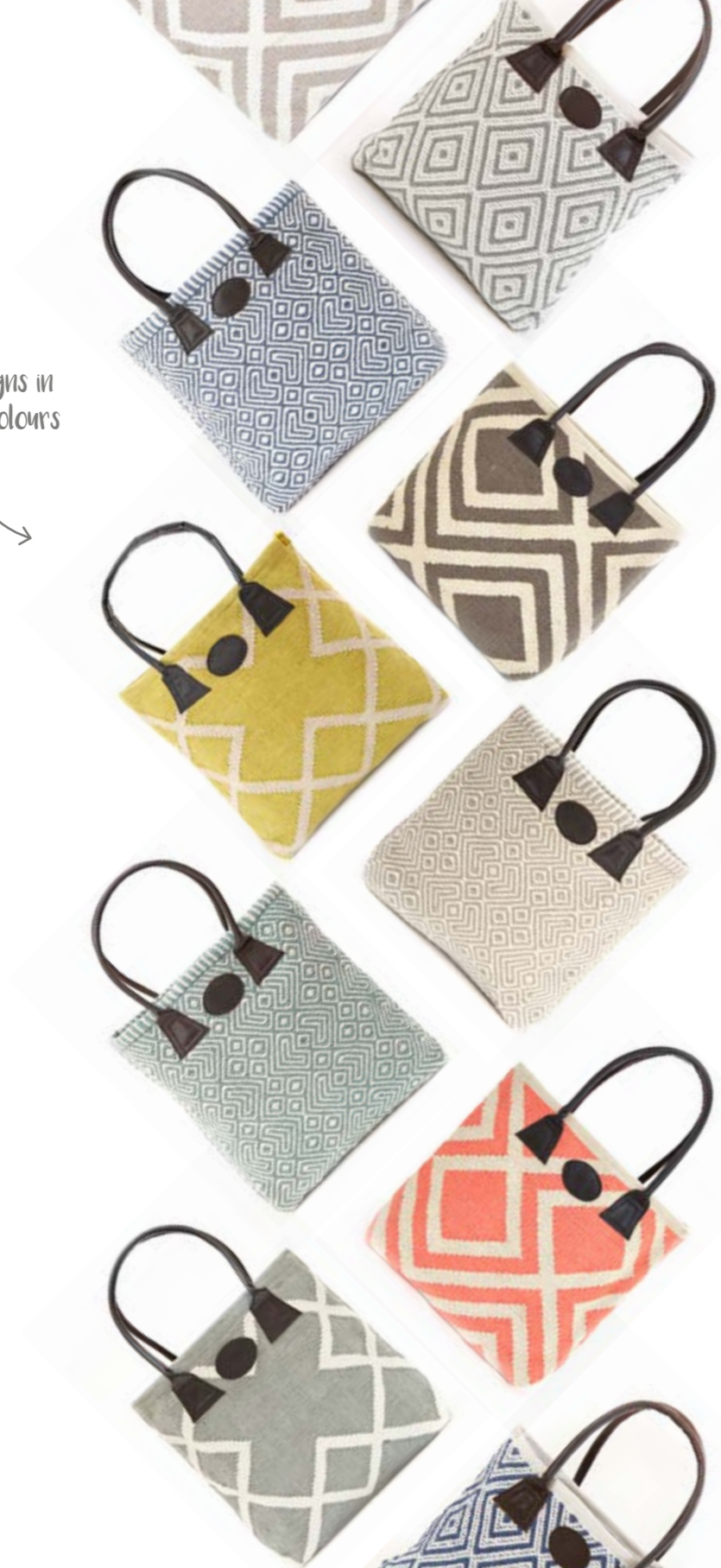
Bags

Perfect shopping tote bags with a useful inner zip pocket for phones and wallets, our bags are strong, hard-wearing and a modern take on the carpet bag. Each bag recycles up to 150 single use plastic bottles for added feel good factor.

Bags are available in four different designs; Juno, Provence, Iris and Mora. Matching cushions and rugs are also available.

Bags 35cm tall x 37cm wide £50

16 FREE DELIVERY on all UK orders over £50



Tote bags

The perfect shopping and day-trip companion, rolls up into a tiny ball and then when you require it, it expands to fit everything you need. Great as a grocery shopper, swim kit bag or lightweight work tote, with a great inner zipped pocket for phones, keys and wallets. Machine washable with a soft linen feel and just brilliant.

Our multi-purpose tote bags are available in three fabric weights and a selection of colours and designs. Introducing our NEW canvas weight Maxime Bags, a harder version of the linen weight Maxime Bags and available in two colour schemes.

| | |
|---|-----|
| NEW Maxime Canvas Bags: | £40 |
| In colours Duck Egg/Natural & Natural/Duck Egg | |
| Maxime Linen Bags: | £30 |
| In colours Linen/Blue, Linen/Coral, Blue/Linen, Linen/Grey & Grey/Linen | |
| Toulouse Linen Bags: | £30 |
| In colours Grey/Linen & Blue/Linen | |
| Antibes Bags: | £35 |
| In colours Grey & Red | |



NEW Canvas weight tote bags





Antibes Cushions

Great for both indoor and outdoor use, our soft linen feel Antibes cushions offer a relaxed shabby chic, French look. Measuring at 45cm x 45cm, they are perfect as seat cushions or scattered over sofas and outdoor steamer chairs.

Available in six colourways; Blue/Linen, Grey/Linen, Linen/Grey, Linen/Dove Grey, Linen/Blue & Linen/Coral.

45cm x 45cm £35



Every cushion is created from up to 300 recycled plastic bottles!



Madras Check

Inspired by the beautiful complex checked fabrics of Madras in southern India and dyed in the soft mustard and plaster pink colour tones so widely used in this area, our Madras check works equally well in a classic English country house as it does an eclectic boho scheme. They look lovely with coordinating cushions on beds and sofas, or on the back of garden chairs to grab as evening chills set in. An absolute classic design in a colour palette that is both interesting and easy to live with.

Madras Check is available in two colours; Gold, and Pink.

| | |
|----------------------|-----|
| Throw 200cm x 110cm | £55 |
| Cushions 45cm x 45cm | £45 |
| Cushions 40cm x 60cm | £45 |





Minerva Cushions

We love a strong woman, and there was none so strong as the Roman goddess of war and weaving, after whom our beautiful new Minerva range was named. Highlighting the best woven patterns in silky soft panels, and in endlessly coordinating washed out mustard gold, chinchilla grey, duck egg blue and the perfect charcoal and white monochrome, these cushions literally go with anything and offer a subtle companion cushion to some of our bolder designs.

Minerva cushions are available in four colours; Charcoal, Duck Egg, Chinchilla and Gold.

45cm x 45cm £45
40cm x 60cm £45



Up to 300 recycled plastic bottles in every cushion



Kas Cushions

A beautiful, intricate Ottoman design printed on our close woven, cotton feel fabric. Our Kas cushions feature soft pom pom tassels on each corner in contrasting or coordinating colours. Perfect on beds and sofas or at the back of bench seats, all our cushions can be used outdoors and in areas of high humidity.

Kas cushions are available in five colours; Navy, Shell, Dove Grey, Chinchilla and Navy with Gooseberry tassels.

40cm x 60cm £45



Darjeeling range

After a grey 2020, we thought it was time to add a riot of colour into all our lives, and to be honest our new Darjeeling throws and cushions are the perfect antidote to gloomy winters. A boho-bonkers combination of rainbow colours that on paper shouldn't work together, but completely do, we absolutely love the warmth and fun that this lovely range brings to any room.

Throw 200cm x 110cm £65
Cushions 40cm x 45cm £50
Cushions 40cm x 60cm £50



Kalkan Cushions

Inspired by an antique jacquard woven textile we found on the Lycian coast of Turkey, our Kalkan cushions come in five soft, muted colour-ways. These look great with our Jaipur cushions, and coordinate with our classic rug and blanket yarns. A brilliant soft woven cushion for indoor and outdoor use. Machine washable, UV stable and made from up to 300 recycled plastic bottles.

Kalkan cushions are available in five colours; Chinchilla, Dove Grey, Navy, Cornflower and Shell.

40cm x 60cm £45



Jaipur Cushions

Inspired by the colourful block printing of Rajasthan, our Jaipur cushions feature an iconic marigold or acorn print in four beautiful colours. Coordinate or mix and match with our Kas and Kalkan cushions for a bohemian look. Our cushions recycle up to 300 plastic bottles and are machine washable, even the inners are made from our recycled plastic fibre. Perfect for indoor and outdoor use.

Jaipur cushions are available in two designs and four colours; Monsoon, Navy, Coral and Dove Grey.

Acorn 45cm x 45cm £45
Marigold 40cm x 60cm £45

Up to 300 recycled plastic bottles in every cushion



Hammam Cushions

A striking diamond design woven in a soft cotton feel, our Hammam cushions are perfect for adding a pop of colour and comfort all around the home and garden.

Available in 4 colours - Cornflower, Chinchilla, Dove Grey and Navy.

45cm x 45cm £45



CUSHIONS
RECYCLE UP TO
300
BOTTLES





Juno Cushions

These bold geometric cushions feature our diamond shaped Juno design and are made using the same heavyweight weave that we use for our hard-wearing rugs; meaning they're perfect for use indoors and outside. Available in three sizes including a comfy floor cushion. Use as an extra seat outside when it's warm, or in kids playrooms.

Available in five colours, Teal, Navy, Gooseberry, Lichen and Dove Grey.

| | |
|--------------|------|
| 45cm x 45cm | £65 |
| 40cm x 60cm | £75 |
| 75cm x 100cm | £210 |

Provence Cushions

Influenced by Scandinavian design, our Provence cushions are made entirely from recycled plastic bottles yet look and feel just like wool. Using the same heavyweight fabric that goes into our rugs means these gorgeous cushions are durable, water & stain resistant so perfect for use all around the home, in the garden or in summer houses, sheds, yurts or even on the beach.

Available in three colours, Navy, Gooseberry and Dove Grey.

| | |
|-------------|-----|
| 45cm x 45cm | £58 |
| 40cm x 60cm | £60 |



Regimental Stripe and Henley Stripe Cushions

Using the same bright colours, in the classic stripe design as our rugs, these Henley and Regimental striped cushions are a great, robust way to brighten hallway seats, or to slouch on outdoor benches. With removable, machine washable covers, these practical pops of colour can work indoors and out all year round.

The Henley Stripe cushions have 2 colourways. A classic grey Clay and bright blue Santorini. The Regimental Stripe has just one bold colourway boasting rich reds, mustard and blue.

45cm x 45cm £75
75cm x 100cm £185



CUSHIONS
RECYCLE UP TO
300
BOTTLES



Nomad Cushions

Perfect for seats and floors, our heavyweight Nomad cushions are woven in our kilim designs for resilient indoor and outdoor use. Made entirely from recycled plastic bottles (including the inner pad), with machine washable covers for easy cleaning.

Nomad cushions are available in five designs; Atlas, Taurus, Sultan, Patara and Tarifa.

45cm x 45cm £75
75cm x 100cm £185





Kasbah Cushions

A classic bold Moroccan design used for our Kasbah rugs, means these matching cushions are equally as gorgeous and resilient. With removable covers, they are suited for use indoors and out and can be paired with our Jaipur cushions for a bohemian look. They are a great addition to add a relaxed feel to any space.

Kasbah cushions are available in three colours; Ink, Nimbus and Smoke.

45cm x 45cm £75
75cm x 100cm £185



Andalucia Cushions

Featuring the classic patterns of a kilim design, our Spanish inspired cushions are a modern take with washed out colours and bohemian vibes. Using the same dhurrie weave as our Andalucia rugs, these cushions are great for throwing on outdoor seats or for lazy days in your summer house. Soft as wool, yet hard wearing, these timeless classics will last all year round.

Andalucia cushions are available in three designs; Zahara, Cadiz and Paloma.

45cm x 45cm £75
75cm x 100cm £185



Tangier Cushions

For that simple monochrome look our Tangier cushions are a great choice. With inspiration from Berber style and paired with our new Eivissa range of cushions and throws, you can achieve the perfect mix of patterns with a calming neutral feel.

45cm x 45cm £75
75cm x 100cm £185

Our 800 x 70 runner is made from 2240 recycled bottles



Regimental Stripe

A bold kilim in a Regimental stripe with rich colours to lift any area within your home. Suitable for areas with low footfall or quiet living spaces and available in coordinating cushions and footstools to complete the look.

The Regimental Stripe range currently features one colour way as seen in this image, available in rugs, cushions and footstools.

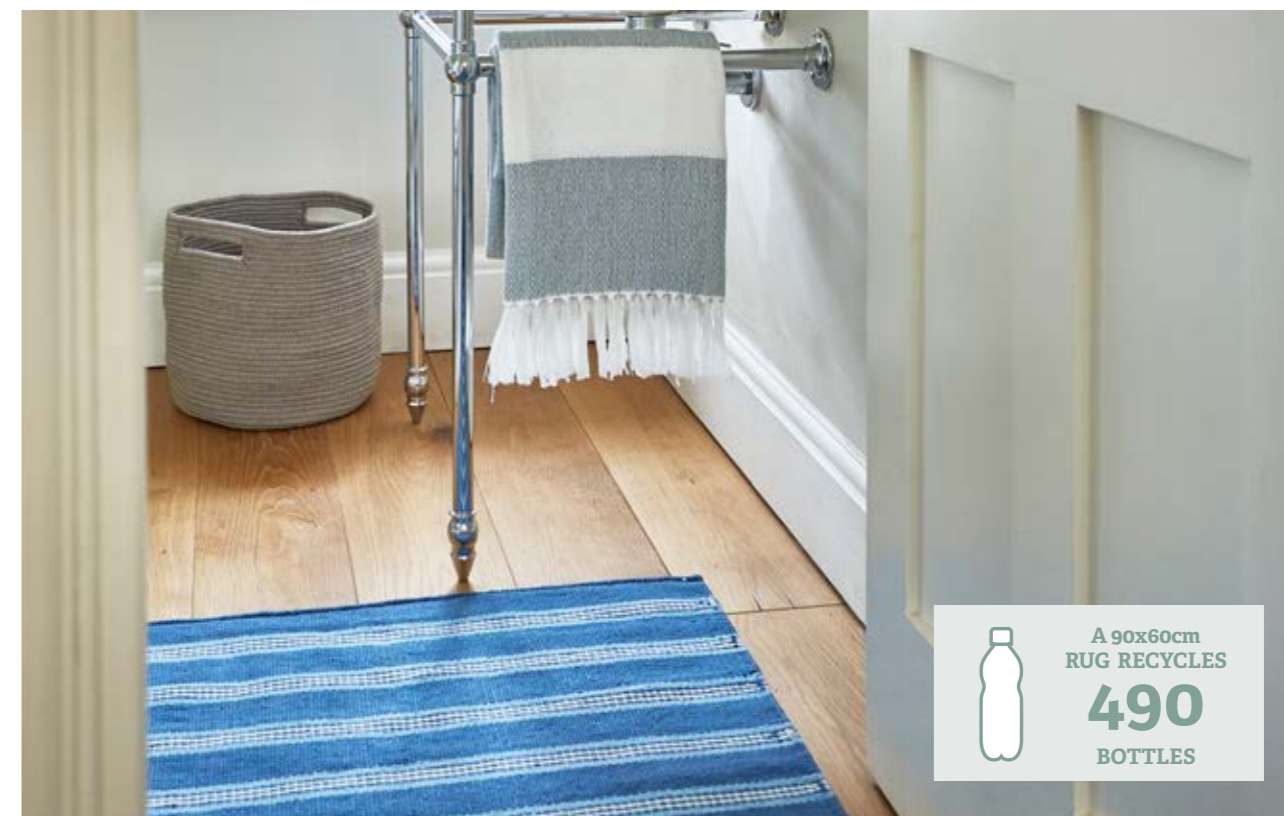
| | |
|-----------------------|------|
| 90cm x 60cm | £52 |
| 150cm x 90cm | £125 |
| 180cm x 120cm | £188 |
| 240cm x 170cm | £365 |
| 300cm x 250cm | £650 |
| 240cm x 70cm (runner) | £150 |
| 600cm x 70cm (runner) | £375 |
| 800cm x 70cm (runner) | £475 |

Henley Stripe

A classic stripe in a bright Santorini blue or softer Clay grey colour. Woven using a cut shuttle method in our soft yarn makes them the perfect addition to low traffic areas within the home and outdoors. Coordinate or mix and match with Henley cushions and footstools.

The Henley Stripe range is available in two colours; Santorini and Clay.

| | |
|-----------------------|------|
| 90cm x 60cm | £52 |
| 150cm x 90cm | £125 |
| 180cm x 120cm | £188 |
| 240cm x 170cm | £365 |
| 300cm x 250cm | £650 |
| 240cm x 70cm (runner) | £150 |
| 600cm x 70cm (runner) | £375 |
| 800cm x 70cm (runner) | £475 |



A 90x60cm RUG RECYCLES 490 BOTTLES



Mora

A simple classic geometric design inspired by an antique Norwegian textile, Mora benefits from an open hand woven technique that gives a lovely softness and depth underfoot. Updated from the original Oslo design, the weave has been tightened, making them perfect as a bath mat or bedside rug.

Mora rugs are available in four colours; Navy, Gooseberry, Dove Grey, and Monsoon. Matching bags are also available

| | |
|-----------------------|------|
| 110cm x 60cm | £45 |
| 150cm x 90cm | £89 |
| 180cm x 120cm | £135 |
| 240cm x 170cm | £255 |
| 300cm x 250cm | £450 |
| 240cm x 70cm (runner) | £115 |





Andalucia

Bohemian designs inspired by the textiles of southern Spain and North Africa, our Andalucia range features classical kilim patterns but with washed out brighter pastel colours. The kilim weave makes this a hard wearing more resilient finish perfect for use in all areas of the house.

The Andalucia range is available in three designs; Paloma, Cadiz and Zahara. Matching cushions, rugs and footstools are also available.

| | |
|-----------------------|--------|
| 150cm x 90cm | £130 |
| 180cm x 120cm | £205 |
| 240cm x 170cm | £380 |
| 300cm 250cm | £690 |
| 450cm x 300cm | £1,200 |
| 240cm x 70cm (runner) | £162 |
| 600cm x 70cm (runner) | £390 |
| 800cm x 70cm (runner) | £510 |



Medina

A simple monochrome tribal design, flatwoven in the Berber style. Our Medina range offers simple geometric design with a bohemian feel. Available as a rug, footstool and cushion, hard wearing and for use in all areas.

| | |
|-----------------------|--------|
| 150cm x 90cm | £130 |
| 180cm x 120cm | £205 |
| 240cm x 170cm | £380 |
| 300cm 250cm | £690 |
| 450cm x 300cm | £1,200 |
| 240cm x 70cm (runner) | £162 |





All of our rugs are machine washable at 40 degrees

Kasbah

A Moroccan design in a robust dhurrie weave our Kasbah rugs look particularly beautiful in larger sizes. Hard wearing and suitable for indoor and outdoor use. Available in three colour ways and six rug sizes with coordinating footstools, cushions and baskets.

Kasbah rugs are available in three colours; Ink, Nimbus and Smoke. Matching cushions, dog beds and footstools are also available.

A 240x170cm RUG RECYCLES **1600** BOTTLES

| | |
|-----------------------|--------|
| 150cm x 90cm | £138 |
| 180cm x 120cm | £220 |
| 240cm x 170cm | £415 |
| 300cm x 250cm | £765 |
| 450cm x 300cm | £1,300 |
| 240cm x 70cm (runner) | £170 |



Juno

An all-time favourite, hand loomed using traditional dhurrie weaving techniques and incredibly hard wearing. A stiffer weave with a strong geometric pattern, great for high footfall areas.

Juno rugs are available in six colours; Dormouse, Dove Grey, Gooseberry, Lichen, Navy and Teal. Matching cushions and dog beds are also available.

| | |
|-----------------------|------|
| 110cm x 60cm | £70 |
| 150cm x 90cm | £145 |
| 180cm x 120cm | £235 |
| 240cm x 170cm | £430 |
| 300cm x 250cm | £775 |
| 240cm x 70cm (runner) | £185 |
| 600cm x 70cm (runner) | £500 |
| 800cm x 70cm (runner) | £670 |





Provence

Our best selling design inspired by beautiful vintage textiles found in a market in Southern France. Our Provence range features an open weave technique that makes it incredibly tactile and soft underfoot. A simple weave that looks great in bedrooms and bathrooms and is suited to areas with low footfall as it is more prone to pilling than our tougher weaves.

Provence rugs are available in five colours; Gooseberry, Teal, Navy, Dormouse and Dove Grey.

| | |
|-----------------------|------|
| 110cm x 60cm | £45 |
| 150cm x 90cm | £89 |
| 180cm x 120cm | £135 |
| 240cm x 170cm | £255 |
| 300cm x 250cm | £450 |
| 240cm x 70cm (runner) | £115 |



Diamond

Designed to have an antiqued look with slight irregularities in colour and weave, our diamond rugs are made with an open weave technique for incredible softness under foot. Suitable for low traffic areas as they are more prone to pilling than our tougher weaves.

Diamond rugs are available in three colours; Dormouse, Dove Grey and Navy and six sizes. Matching blankets are available.

| | |
|-----------------------|------|
| 110cm x 60cm | £45 |
| 150cm x 90cm | £89 |
| 180cm x 120cm | £135 |
| 240cm x 170cm | £255 |
| 300cm x 250cm | £450 |
| 240cm x 70cm (runner) | £115 |



A 110x60cm
RUG RECYCLES
550
BOTTLES

Six sizes and
three colours to
choose from!



Herringbone

A classic herringbone design with a soft handwoven finish - perfect for bedrooms, bathrooms and low footfall living rooms. Machine washable and available in three soft Scandinavian colour ways.

Herringbone rugs are available in three colours; Dove Grey, Dormouse and Navy. Matching blankets are also available.

| | |
|-----------------------|------|
| 110cm x 60cm | £45 |
| 150cm x 90cm | £89 |
| 180cm x 120cm | £135 |
| 240cm x 170cm | £255 |
| 300cm x 250cm | £450 |
| 240cm x 70cm (runner) | £115 |






Iris

A bold geometric design woven using our cut shuttle technique, Iris is a beautiful hard wearing rug design that works well in kitchens, hallways and busy living rooms. The six metre and eight metre runners look incredible in long hallways or as fitted stair runners.

Iris rugs are available in seven colours; Monsoon, Coral, Teal, Gooseberry, Chinchilla, Shell and Dove Grey.

| | |
|-----------------------|------|
| 150cm x 90cm | £140 |
| 180cm x 120cm | £230 |
| 240cm x 170cm | £420 |
| 300cm x 250cm | £780 |
| 240cm x 70cm (runner) | £175 |
| 600cm x 70cm (runner) | £405 |
| 800cm x 70cm (runner) | £540 |

each 600 x 70 runner
is made from 1700
recycled plastic bottles



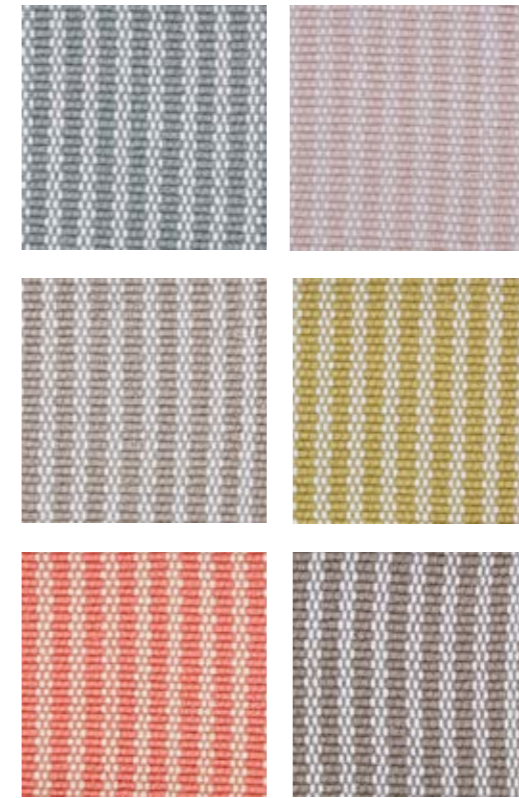

Chenille

A firm favourite, textured, fuzzy underfoot and available in six gorgeous, easy to live with colours. Our Chenille rugs are perfect bedroom and bathroom rugs, or great for creating areas of interest in cosy living rooms.

Chenille rugs are available in six colours; Gooseberry, Dove Grey, Chinchilla, Teal and Shell.

| | |
|-----------------------|------|
| 110cm x 60cm | £68 |
| 150cm x 90cm | £130 |
| 180cm x 120cm | £199 |
| 240cm x 170cm | £375 |
| 300cm x 250cm | £675 |
| 240cm x 70cm (runner) | £160 |





Polperro Stripe

A new updated weave from the original Brighton Stripe range, our Polperro Stripe takes the classic stripe design, with a tighter weave. These rugs are soft and squishy underfoot making them the perfect choice for bathrooms and bedrooms. Available in six vibrant colours to brighten your chosen space.

Polperro stripe rugs are available in six colours; Dove Grey, Shell, Chinchilla, Gooseberry, Coral and Monsoon.

| | |
|-----------------------|------|
| 110cm x 60cm | £45 |
| 150cm x 90cm | £89 |
| 180cm x 120cm | £135 |
| 240cm x 170cm | £255 |
| 300cm x 250cm | £450 |
| 240cm x 70cm (runner) | £115 |



Up to 600 recycled plastic bottles used for each 150 x 90 rug



Maxime

Continue the classic Mediterranean look with these gorgeous Maxime rugs. Made using our soft open yarn, they are suitable for all quiet living spaces with lower footfall, giving you a clean, relaxed feel.

Maxime rugs are available in eight sizes and two colours; a soft Grey and muted Blue.

| | |
|-----------------------|------|
| 90cm x 60cm | £52 |
| 150cm x 90cm | £125 |
| 180cm x 120cm | £188 |
| 240cm x 170cm | £365 |
| 300cm x 250cm | £650 |
| 240cm x 70cm (runner) | £150 |
| 600cm x 70cm (runner) | £399 |
| 800cm x 70cm (runner) | £525 |



Nomad

Our take on the classic Persian Kilim, the Nomad range features rugs, footstools and cushions in rich reds and earthy tones that won't fade in the sun. Hand woven by artisans, our Nomad rugs and cushions are extremely hard wearing and perfect for living rooms, halls and stairways with high footfall. All our rugs and textiles are machine washable, so no need to panic if a bottle of red spills or the dog runs in with muddy paws.

The Nomad range is available in five designs; Patara, Taurus, Sultan, Atlas and Tarifa.

| | |
|---------------------------|--------|
| Rug 150cm x 90cm | £169 |
| Rug 180cm x 120cm | £270 |
| Rug 240cm x 170cm | £510 |
| Rug 300cm x 250cm | £935 |
| Rug 450cm x 300cm | £1,555 |
| Rug 240cm x 70cm (runner) | £210 |
| Rug 600cm x 70cm (runner) | £545 |
| Rug 800cm x 70cm (runner) | £725 |



A 450x300cm
RUG RECYCLES
5400
BOTTLES



EVERY DOG BED
RECYCLES
600
BOTTLES

Un-zip the covers
and pop them in the
wash at 40 degrees



Dog Beds

Our dog beds look beautiful without a cartoon dog bone print in sight, so your home can still look lovely while your dog snoozes. Coordinating with some of our best hard wearing rugs, they are large enough for two badly behaved spaniels, machine washable and immune to scratchy claws.

Dog beds are available in seven ranges; Nomad, Medina, Henley Stripe, Juno, Regimental Stripe, Andalucia and Kasbah. Other size cushions are available too.

75cm x 100cm **£189** (except Juno **£210**)



Ottomans

Explore our gorgeous new collection of ottomans, made using our amazing hard-wearing, easy to clean and stain-resistant rug weaves. Whether used as a coffee table, a footstool or a seat at the end of the bed, these useful pieces of furniture are a great addition to any home.

We seal the hand turned solid beech legs with 100% sustainable hemp oil, a natural, preservative and additive-free oil that both nourishes and protects. Hemp oil also enhances the natural grains of the wood.

Available in 2 sizes and a variety of designs to suit your space. please refer to the website for the full list of designs available.

120cm x 60cm x 38cm £595
140cm x 80cm x 43cm £695





Footstools

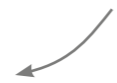
A brilliant portable 'put your feet up' that coordinates with our best selling rugs and accessories. Perfect in front of a sofa or armchair, or to perch drink trays on.

Footstools are available in five ranges; Kasbah, Nomad, Andalucia, Medina and Regimental Stripe.

55cm d x 25cm h £199



New removable covers



Braided Baskets

Storage....you can never have enough....use our machine washable baskets to stash shoes, toys, dirty laundry, cosmetics or any other bits and bobs you need to contain and hide. The three sizes cover most jobs from the bathroom to laundry room, they can even be used to transport picnics....available in a rainbow of colours.

Braided baskets are available in three sizes and six colours; Dove Grey, Shell, Teal, Gooseberry, Navy and Chinchilla.

| | |
|-------------|-----|
| 15cm x 15cm | £15 |
| 30cm x 30cm | £25 |
| 40cm x 40cm | £45 |



Kasbah Basket

A beautiful soft basket available in all three colours of our bohemian Kasbah design. Great for a variety of uses like storing laundry, toys, logs for the fire, or even loading up for a day out on the beach or for a picnic. Fully machine washable and can be paired with coordinating rugs, cushions or footstools to complete the look.



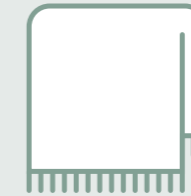
40cm x 40cm £50



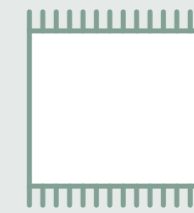
All of our products are made from **100% recycled PET** plastic bottles



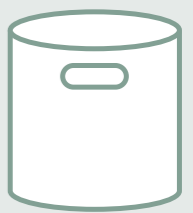
BAGS
RECYCLE UP TO
150
BOTTLES



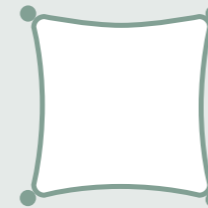
BLANKETS
RECYCLE UP TO
300
BOTTLES



RUGS
RECYCLE UP TO
5,400
BOTTLES



BASKETS
RECYCLE UP TO
600
BOTTLES



CUSHIONS
RECYCLE UP TO
600
BOTTLES



FOOTSTOOLS
RECYCLE UP TO
600
BOTTLES



TABLE LINENS
RECYCLE UP TO
785
BOTTLES



APRONS
RECYCLE UP TO
120
BOTTLES



All of our textiles are made
only from **100% recycled plastic**
bottles and are fully recyclable
at the end of their life.

WAYS TO SHOP

Shop with us online at
weavergreen.com
and enjoy **FREE DELIVERY**
on all UK orders over £50.

Alternatively contact us on
weaver@weavergreen.com
with your postcode to find your
nearest stockist, or to request free sample
swatches of any of our rug designs.

Don't forget to follow us:



**FREE
DELIVERY**

ON ALL UK ORDERS
OVER £50



weavergreen.com

Weaver Green, Heron Valley Orchards, Loddiswell, Kingsbridge, Devon TQ7 4EA

Call us on 01548 431902 or email us at: weaver@weavergreen.com

Please pass on to a friend or recycle



www.carbonbalancedpaper.com
CBP006077

