



JTF HAS RECEIVED HIGH PRAISE WORLDWIDE

www.jtforal.com

sarah@jtforal.com

+86 189 3321 6819

JUST TO FUTURE



THE LEADER IN ORAL CARE INDUSTRY



 Just To Future



JTF Just To Future

COMPANY PROFILE

Founded in 2018, JTF focuses on the field of oral health and is committed to building a global leader in producing and selling well-designed, top-quality and reasonably priced oral health care products.

We are taking whitening teeth and protecting oral health as our mission. JTF brand Sonic Electric Toothbrushes and Water Flossers are designed to help you keep your teeth white and your mouth clean for a long time, so that you can always have a confident and generous smile whether busy or idle, plain or glorious.

Fulfilling customer satisfaction, we will pay back our gratitude with greater customer service.

ZHIAO



■ **Frank Zhao**
FOUNDER

Focused on the printing industry for 18 years, with zero to one entrepreneurial experience and rich business practice experience, leading the team to successfully integrate into the industry's first listed company.

Second time entrepreneur, ALL IN oral health industry, devote the rest of his life to building the world leading brand JTF.

- EMBA, Cheung Kong Graduate School of Business
- DBA, W. P. Carey School of Business | Arizona State University



■ **Sarah Peng**
CO-FOUNDER

Focus on overseas business for 16 years, proficient in English, has a footprint in more than 80 countries around the world, with rich experience in global market sales.

Insists on making users around the world trust Made in China products.

- Bachelor's degree in Economics, majoring in International Trade
- Hunan University, a double-class university



■ **Tina Lv**
CO-FOUNDER

Specialized in the dental industry for nearly 20 years. Was Co-founder of BaiBo Dental Group, the largest dental group in China.

She believes that with her own little power, she can make the people of China smile more confidently.

- EMBA, Cheung Kong Graduate School of Business
- Master of Business Administration, Shenyang University of Technology



MUST-HAVE FOR YOUR ORAL HEALTH

JTF makes teeth and gums healthy and strong.

GOOD HABIT



Removes food debris while massaging gums gently



Prevents peri-implantitis



Ideal for orthodontic patients



Takes care of pregnant women's teeth (before & after)



Prevention of kids' teeth decay



Remove bad breath



HEALTH ORAL HEALTH IS THE
BEGINNING OF GENERAL HEALTH

IF YOU CLEAN YOUR TEETH **CARELESSLY**



Poor oral hygiene

Accelerates aging process and Reduces cognitive ability

Journal of American gerontology (Denmark Research Team)



Greater risks for

Pneumonia, Asthma, and Laryngopharyngitis

February, 2002, Issue of the British Journal on the Periodontal Membrane



Greater risk for cardiac arrest

up to 2.8 times greater than healthy people

International Dental Research Association



Greater risk for premature birth

up to 7.8 times greater than healthy people

International Dental Research Association



Infection or inflammation in the roots of teeth, may increase the risk of **diabetes** by lowering insulin levels and cause difficulty in controlling blood sugar levels

Taiwanese Dental Health Association



JTF SONIC ELECTRIC TOOTHBRUSH

FOR ADULT

P200 ◀
SONIC ELECTRIC TOOTHBRUSH

▶ **P100**
SONIC ELECTRIC TOOTHBRUSH

▶ **P300**
SONIC ELECTRIC TOOTHBRUSH

J20A ▲
SONIC ELECTRIC TOOTHBRUSH

J20B ▼
SONIC ELECTRIC TOOTHBRUSH

▶ **J40**
SONIC ELECTRIC TOOTHBRUSH

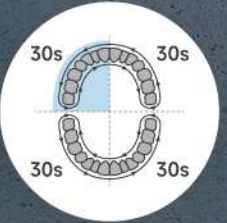


P100

SONIC ELECTRIC TOOTHBRUSH



Dupont Bristles
Minimize damage on teeth enamel



Smart Interval Timer
Pauses in every 30 seconds



Type-c Charging Type
Faster charging, easy to carry

Product Type : Sonic Electric Toothbrush
5 Modes : Clean/Sensitive/Refresh/Massage/White
Battery Life : 30-75 days
Charging Type : USB Type-C

Product Model : P100
Vibration : 50000times/minute
Charging Time : 2.5H
Product Size : 27.5x29x245mm

Age Range : Adult
Waterproof Level : IPX7
Product Weight : 99g
PCS/ctn : 40



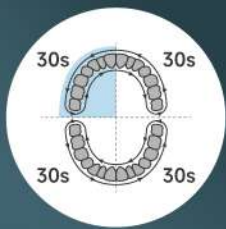
P200

SONIC ELECTRIC TOOTHBRUSH



Dupont Bristles

Minimize damage on teeth enamel



Smart Interval Timer

Pauses in every 30 seconds



Stand Charging Type

Toothbrush upright charging



Travel Case

Easy to carry for business or travel

Product Type : Sonic Electric Toothbrush
5 Modes : Clean/Sensitive/Refresh/Massage/White
Battery Life : 30-100 days
Charging Type : Wireless Charging Stand

Product Model : P200
Vibration : 40000times/minute
Charging Time : <10H
Product Size : 26.5x26.5x240mm

Age Range : Adult
Waterproof Level : IPX7
Product Weight : 93g



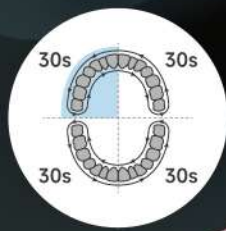
P300

SONIC ELECTRIC TOOTHBRUSH



Dupont Bristles

Minimize damage on teeth enamel



Smart Interval Timer

Pauses in every 30 seconds



Stand Charging Type

Toothbrush upright charging with colorful light

Product Type : Sonic Electric Toothbrush

5 Modes : Clean/Sensitive/Polish/Massage/White

Battery Life : 30-40 days

Charging Type : Wireless Charging Stand

Product Model : P300

Vibration : 48000times/minute

Charging Time : <12H

Product Size : 24.3x24.3x248mm

Age Range : Adult

Waterproof Level : IPX7

Product Weight : 90g

J40

SONIC ELECTRIC TOOTHBRUSH



Non-slip design



Low Battery Alert



Toothbrush Holder

Product Type : Sonic Electric Toothbrush
5 Modes : Clean/Sensitive/Polish/Massage/White
Battery Life : 35-45 days
Charging Type : USB DC

Product Model : J40
Vibration : 18000times/minute
Charging Time : 2H
Product Size : 30.5x30.5x245mm

Age Range : Adult
Waterproof Level : IPX7
Product Weight : 84g





BRUSH
YOUR
Teeth!

J20C
SONIC ELECTRIC
TOOTHBRUSH

P600
SONIC ELECTRIC
TOOTHBRUSH

JTF SONIC ELECTRIC TOOTHBRUSH

FOR CHILDREN

J20C

SONIC ELECTRIC TOOTHBRUSH



Designed For Children

Make children love in brushing their teeth

Product Type : Sonic Electric Toothbrush

Product Model : J20C

5 Modes : Clean/Polish/White

Age Range : 3-12 years old

Vibration : 17000times/minute

Waterproof Level : IPX7

Battery Life : 50-65 days

Charging Time : <4H

Charging Type : USB-DC

Product Size : 21x21x227mm

Product Weight : 55g



P600

SONIC ELECTRIC TOOTHBRUSH



3 Modes

3-6 / 7-9 / ≥10 age



**Dupont Bristles
Rubber Covered Brush Head**

Better protect children's mouth



Stand Charging Type

Toothbrush upright charging

Product Type : Sonic Electric Toothbrush

3 Modes : 3-6/7-9/≥10

Battery Life : 60-140 days

Charging Type : Wireless Charging Stand

Product Model : P600

Vibration : 43000times/minute

Charging Time : <7H

Product Size : 24x24x223mm

Age Range : 3-12 years old

Waterproof Level : IPX7

Product Weight : 88g

W100

WATER FLOSSER



Ergonomic
optimal cleaning



3 Cleaning Modes
Normal/Soft/Pulse



Conveniently Portable
Easy to carry

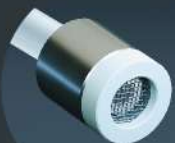
Product Type : Water Flosser
5 Modes : Normal/Soft/Pulse
Battery Life : 21 days
Charging Type : USB-C8
Nozzle : 2 standard nozzles

Product Model : W100
Pulse : 1400 pulse/minute
Charging Time : 4H
Product Size : 60x91x221.6mm

Waterproof Level : IPX7
Product Weight : 312g
Water Pressure Range : 40-100 PSI
Water Tank Capacity : 190ml

F100

WATER FLOSSER



Gravity Filter Ball

Absorbs water flexibly



3+DIY Modes

for various oral-care needs



Nozzle storage

Easy to carry

Product Type : Water Flosser

4 Modes : Soft, Strong, Pulse, DIY(8 level)

Battery Life : 37 days

Charging Type : USB Type-C

Nozzle : 3 standard nozzles+ 1 orthodontic nozzle+ 1 tongue scraper

Product Model : F100

Pulse : 1800 pulse/minute

Charging Time : 6H

Product Size : 76.5x71.5x219.0mm

Waterproof Level : IPX7

Product Weight : 275g

Water Pressure Range : 50-120 PSI

Water Tank Capacity : 300ml



F200 WATER FLOSSER



Gravity Filter Ball

Absorbs water flexibly



3+DIY Modes

for various oral-care needs



Nozzle storage

Easy to carry

Product Type : Water Flosser

4 Modes : Soft, Strong, Pulse, DIY(8 level)

Battery Life : 37 days

Charging Type : USB Type-C

Nozzle : 3 standard nozzles+ 1 orthodontic nozzle+ 1 tongue scraper

Product Model : F200

Pulse : 1800 pulse/minute

Charging Time : 6H

Product Size : 64x45x140mm

Waterproof Level : IPX7

Product Weight : 230g

Water Pressure Range : 50-120 PSI

Water Tank Capacity : 230ml